
ARCHAEOLOGICAL SOLUTIONS LTD

**LAND AT WEST END, WELFORD,
NORTHAMPTONSHIRE**

AN ARCHAEOLOGICAL EVALUATION

HER Event No: ENN108338.

| | |
|----------------------------|-------------------|
| Authors: Zbigniew Pozorski | |
| NGR: SP 4638 2798 | Report No: 5132 |
| District: Daventry | Site Code: AS1826 |
| Approved: Claire Halpin | Project No: 6349 |
| Signed: | Date: 26 May 2016 |

This report is confidential to the client. Archaeological Solutions Ltd accepts no responsibility or liability to any third party to whom this report, or any part of it, is made known. Any such party relies upon this report entirely at their own risk. No part of this report may be reproduced by any means without permission.

Archaeological Solutions is an independent archaeological contractor providing the services which satisfy all archaeological requirements of planning applications, including:

Desk-based assessments and environmental impact assessments
Historic building recording and appraisals
Trial trench evaluations
Geophysical surveys
Archaeological monitoring and recording
Archaeological excavations
Post excavation analysis
Promotion and outreach
Specialist analysis

ARCHAEOLOGICAL SOLUTIONS LTD

**Unit 6, Brunel Business Court, Eastern Way,
Bury St Edmunds IP32 7AJ
Tel 01284 765210**

**P I House, Rear of 23 Clifton Road, Shefford,
Bedfordshire, SG17 5AF
Tel: 01462 850483**

**e-mail info@ascontracts.co.uk
www.archaeologicalsolutions.co.uk**



twitter.com/ArchaeologicalS



www.facebook.com/ArchaeologicalSolutions



CONTENTS

OASIS SUMMARY SHEET

SUMMARY

- 1 INTRODUCTION***
- 2 DESCRIPTION OF THE SITE***
- 3 TOPOGRAPHY, GEOLOGY AND SOILS***
- 4 ARCHAEOLOGICAL AND HISTORICAL BACKGROUND***
- 5 METHODOLOGY***
- 6 DESCRIPTION OF RESULTS***
- 7 CONFIDENCE RATING***
- 8 DEPOSIT MODEL***
- 9 DISCUSSION***
- 10 DEPOSITION OF THE ARCHIVE***

ACKNOWLEDGEMENTS

BIBLIOGRAPHY

APPENDICES

- 1 CONTENTS OF THE ARCHIVE***

OASIS SUMMARY SHEET

| | | | |
|---------------------------------------------------------------------------------------------------------------------------------------------------------------------------------------------------------------------------------------------------------------------------------------------------------------------------------------------------------------------------------------------------------------------------------------------------------------------------------------------------------------------------------------------------------------------------------------------------------------------------------------------------------------------------------------------------------------------------------------------------------------------------------------------------------------------------------------------------------------------------------------------------------------------------------------------------------------------|----------------------------------------------------------------------------------|---------------------|----------------|
| Project details | | | |
| Project name | <i>Land at West End, Welford, Northamptonshire</i> | | |
| <p><i>In May 2016 Archaeological Solutions (AS) carried out an archaeological evaluation at land at West End, Welford, Northamptonshire (NGR SP 4638 2798). The evaluation was undertaken in compliance with a planning condition attached to planning permission for the construction of four dwellings following demolition of agricultural buildings.</i></p> <p><i>The site is situated within the River Avon valley area which has produced Neolithic and Bronze Age flints. Welford may have originated in the early Saxon period and finds of that date and later were found nearby and the site is located on the southern edge of the historic settlement. Therefore the site had a potential for prehistoric, Saxon and medieval archaeological remains.</i></p> <p><i>In the event the evaluation revealed no archaeological features or finds. The site contained only modern (20th century) made ground overlying the natural clay.</i></p> | | | |
| Project dates (fieldwork) | <i>23/05/2016</i> | | |
| Previous work (Y/N/?) | <i>N</i> | Future work (Y/N/?) | <i>N</i> |
| P. number | <i>6349</i> | Site code | <i>AS1826</i> |
| Type of project | <i>An Archaeological Evaluation</i> | | |
| Site status | | | |
| Current land use | <i>Former farmyard</i> | | |
| Planned development | <i>Construction of 4 dwellings</i> | | |
| Main features (+dates) | | | |
| Significant finds (+dates) | | | |
| Project location | | | |
| County/ District/ Parish | <i>Northamptonshire</i> | <i>Daventry</i> | <i>Welford</i> |
| HER/ SMR for area | <i>Northamptonshire HER</i> | | |
| Post code (if known) | | | |
| Area of site | <i>c.2500m²</i> | | |
| NGR | <i>SP 4638 2798</i> | | |
| Height AOD (min/max) | <i>c.160m</i> | | |
| Project creators | | | |
| Brief issued by | <i>NCC</i> | | |
| Project supervisor/s (PO) | <i>Zbigniew Pozorski</i> | | |
| Funded by | <i>Mr & Mrs Wilson</i> | | |
| Full title | <i>Land at West End, Welford, Northamptonshire: An Archaeological Evaluation</i> | | |
| Authors | <i>Pozorski, Z.</i> | | |
| Report no. | <i>5132</i> | | |
| Date (of report) | <i>May 2016</i> | | |

LAND AT WEST END, WELFORD, NORTHAMPTONSHIRE

AN ARCHAEOLOGICAL EVALUATION

SUMMARY

In May 2016 Archaeological Solutions (AS) carried out an archaeological evaluation at land at West End, Welford, Northamptonshire (NGR SP 4638 2798). The evaluation was undertaken in compliance with a planning condition attached to planning permission for the construction of four dwellings following demolition of agricultural buildings.

The site is situated within the River Avon valley area which has produced Neolithic and Bronze Age flints. Welford may have originated in the early Saxon period and finds of that date and later were found nearby and the site is located on the southern edge of the historic settlement. Therefore the site had a potential for prehistoric, Saxon and medieval archaeological remains.

In the event the evaluation revealed no archaeological features or finds. The site contained only modern (20th century) made ground overlying the natural clay.

1 INTRODUCTION

1.1 In May 2016 Archaeological Solutions (AS) carried out an archaeological evaluation at land at West End, Welford, Northamptonshire (NGR SP 4638 2798; Figs. 1 & 2). The evaluation was commissioned by Mr Alan Curtis and funded by Mr & Mrs Wilson and was undertaken in compliance with a planning condition attached to planning permission for the construction of four dwellings following demolition of agricultural buildings (Daventry Planning Ref. DA/2015/0090).

1.2 The evaluation was undertaken in accordance with a brief issued by Assistant Archaeological Advisor of Northamptonshire County Council (NCC; dated 08/07/2015) and a written scheme of investigation (specification) prepared by AS (dated 24/02/2016) and approved by NCC. The brief initially required a 'strip, map & sample' investigation. Given site conditions, following discussions with NCC, the requirement has been varied for an initial trial trench evaluation. The project conformed to the Chartered Institute for Archaeologists (CIfA) *Code of Conduct and Standard and Guidance for Archaeological Field Evaluation* (2014).

1.3 The evaluation aimed:

- to determine the location, extent, nature and date of any archaeological features or deposits that may be present;

- to provide information on the integrity and state of preservation of any archaeological features or deposits that may be present;
- recovery of artefacts to assist in the development of a type series within the region; and
- recovery of palaeoenvironmental remains to determine local environmental conditions

Planning policy context

1.4 The National Planning Policy Framework (NPPF 2012) states that those parts of the historic environment that have significance because of their historic, archaeological, architectural or artistic interest are heritage assets. The NPPF aims to deliver sustainable development by ensuring that policies and decisions that concern the historic environment recognise that heritage assets are a non-renewable resource, take account of the wider social, cultural, economic and environmental benefits of heritage conservation, and recognise that intelligently managed change may sometimes be necessary if heritage assets are to be maintained for the long term. The NPPF requires applications to describe the significance of any heritage asset, including its setting that may be affected in proportion to the asset's importance and the potential impact of the proposal.

1.5 The NPPF aims to conserve England's heritage assets in a manner appropriate to their significance, with substantial harm to designated heritage assets (i.e. listed buildings, scheduled monuments) only permitted in exceptional circumstances when the public benefit of a proposal outweighs the conservation of the asset. The effect of proposals on non-designated heritage assets must be balanced against the scale of loss and significance of the asset, but non-designated heritage assets of demonstrably equivalent significance may be considered subject to the same policies as those that are designated. The NPPF states that opportunities to capture evidence from the historic environment, to record and advance the understanding of heritage assets and to make this publicly available is a requirement of development management. This opportunity should be taken in a manner proportionate to the significance of a heritage asset and to impact of the proposal, particularly where a heritage asset is to be lost.

2 DESCRIPTION OF THE SITE

2.1 Welford is located c.10km south-east of Market Harborough and c.8km south-west of Lutterworth, Northamptonshire. The site lies on the eastern side of West End on the south-western edge of Welford, adjacent to a former gravel pit to the north (which is not thought to have extended into the current site). Until recent demolition works the site contained agricultural buildings and concrete hardstanding.

3 TOPOGRAPHY, GEOLOGY AND SOILS

3.1 The site is situated on relatively flat land at c.160m AOD with deep former gravel pit adjacent to the north-east. The solid geology of the area consists of siltstone/mudstone deposits of Whitby Mudstone Formation below glacial till (British Geological Survey 1978). Soils on the site are slowly permeable seasonally wet slightly acid but base-rich loamy and clayey soils (Soil Survey of England and Wales 1983). Geotechnical information provided by the client indicates that there is 0.6m (front) to 1.3m (rear) of compacted made ground on the site from the previous farmyard, straight onto natural deposits.

4 ARCHAEOLOGICAL AND HISTORICAL BACKGROUND

4.1 The site lies within an area that has archaeological remains recorded on the Northamptonshire Historic Environment Record. Scatters of Neolithic and Bronze Age flint close to Newlands Road c.200m to the north-east suggest prehistoric activity may be present on the upper slopes of the valley overlooking the (now) Grand Union Canal (Welford Branch) (HER 5543 & 5964). Settlement at Welford may originate in the early Saxon period as evidenced by a pottery scatter associated with a cropmark enclosure to the west of West End (HER 503/0/0), separated from the site by a hollow way close to the western side of West End (HER 1066/0/2); while an early Saxon brooch has also been recovered in the vicinity (HER 1530/0/0).

4.2 Welford lies at the head of the Avon Valley, and may have been medieval market foundation intended to exploit a gap between the major towns (HER 503). There is extensive evidence for the medieval settlement, albeit as crop marks or earthworks, centred on Welford manor (HER 503/2), adjacent to the church c.500m to the north. The bulk of the evidence for the medieval village of Welford including building platforms and manorial earthworks are situated to the north-west of the church (HER 503/2/3, 7 & 8), with tofts further to the west (HER 503/30-31). However a secondary settlement to Welford; 'the Cotes' may be represented by earthworks spanning a large field c.50m to the east of the site (HER 503/0/8), while a possible double-ditched moat c.150m to the west may also form part of the settlement complex (HER 503/0/1). The 'Welford Cup', a silver inscribed cup dated 1518 was recovered c.180m to the north-east of the site, between the two areas of postulated settlement (HER 1529).

4.3 With the exception of 'the Cotes', the fields surrounding the site appear to be characterised by the survival of ridge and furrow to the east (HER 5427/0/18-19) and south-east (HER 5427/0/9-10); with earthworks possibly indicative of tofts to the north-east (HER 503/0/11) and south (HER 503/0/25). These features are recorded on aerial photographs, though limited archaeological investigation of the northern area of these cropmarks revealed no surviving remains. Ribbon development appears to have extended southwards along West End towards the site in the post-medieval period,

including closest to the north of the site, no. 6 West End, which was built in the late 17th century (HER 503/0/22).

5 METHODOLOGY

5.1 Three trenches each measuring 20 x 2m were excavated using a mechanical 180° excavator fitted with a toothless ditching bucket (Fig. 3). The trenches locations were approved by NCC.

5.2 Topsoil and undifferentiated overburden were mechanically excavated under close archaeological supervision. Exposed surfaces were cleaned by hand and examined for archaeological features. Deposits were recorded using *pro forma* recording sheets, drawn to scale, and photographed as appropriate. Excavated spoil was searched for finds and the trenches were scanned by a metal detector.

6 DESCRIPTION OF RESULTS

Trench 1 (Figs. 3-4, DP 2-3)

| <i>Sample section 1A (DP 4): north-west end, south-west facing</i> <i>0.00 = 160.12m AOD</i> | | |
|-------------------------------------------------------------------------------------------------|-------|------------------------------------------------------------------------------------------------------------------------------------|
| 0.00 – 0.13m | L1000 | Made ground. Light brown, loose, silty sand with gravel and CBM fragments. |
| 0.13 – 0.23m | L1001 | Made ground. Mid bluish grey, friable, clayey silt with frequent gravel and occasional CBM fragments. |
| 0.23m + | L1002 | Natural light to mid brownish yellow, compact, clay with occasional small stones. Locally contaminated to mid to dark bluish grey. |

| <i>Sample section 1B (DP 5): south-east end, north-east facing</i> <i>0.00 = 160.15m AOD</i> | | |
|-------------------------------------------------------------------------------------------------|-------|-------------------------|
| 0.00 – 0.25m | L1000 | Made ground. As above. |
| 0.25m + | L1002 | Natural clay. As above. |

Description: No archaeological features or finds were present.

Trench 2 (Figs. 3-4, DP 7-8)

| <i>Sample section 2A (DP 9): north-west end, south-west facing</i> <i>0.00 = 159.92m AOD</i> | | |
|-------------------------------------------------------------------------------------------------|-------|--------------------------------|
| 0.00 – 0.10m | L1000 | Made ground. As above, Tr. 1. |
| 0.10m + | L1002 | Natural clay. As above, Tr. 1. |

| <i>Sample section 2B (DP 10): south-east end, north-east facing</i> <i>0.00 = 159.86m AOD</i> | | |
|--------------------------------------------------------------------------------------------------|--|--|
|--------------------------------------------------------------------------------------------------|--|--|

| | | |
|--------------|-------|--------------------------------|
| 0.00 – 0.14m | L1000 | Made ground. As above, Tr. 1. |
| 0.14m + | L1002 | Natural clay. As above, Tr. 1. |

Description: No archaeological features or finds were present.

Trench 3 (Fig. 2, DP 11-12)

| | | |
|--------------------------------------------------------------------------------------------------|-------|-----------------------------------------------------|
| <i>Sample section 3A (DP 13): north-east end, south-east facing</i> <i>0.00 = 160.24m AOD</i> | | |
| 0.00 – 0.19m | L1000 | Made ground. As above, Tr. 1. |
| 0.19 – 0.35m | L1001 | Made ground. As above, Tr. 1. |
| 0.35m + | L1002 | Natural clay. As above, Tr. 1 but mid to dark grey. |

| | | |
|--------------------------------------------------------------------------------------------------|-------|--------------------------------|
| <i>Sample section 3B (DP 14): south-west end, north-west facing</i> <i>0.00 = 159.89m AOD</i> | | |
| 0.00 – 0.16m | L1000 | Made ground. As above, Tr. 1. |
| 0.16m + | L1002 | Natural clay. As above, Tr. 1. |

Description: No archaeological features or finds were present.

7 CONFIDENCE RATING

7.1 It is not felt that any factors inhibited the recognition of archaeological features or finds.

8 DEPOSIT MODEL

8.1 The site was commonly overlain by modern deposits associated with the recently removed agricultural buildings (L1000; 0.10 – 0.30m thick; L1002 0.10 – 0.40m thick). The modern deposits directly overlay the natural geology.

8.2 The natural clay, L1002, was present at 0.10 – 0.55m below existing ground level and comprised a light to mid brownish yellow, compact, clay with occasional small stones. It was locally contaminated to mid to dark bluish grey and in the south-eastern part of the site it was naturally light to mid grey.

9 DISCUSSION

9.1 The site had a potential for archaeological remains, in particular for Saxon and medieval archaeology with some potential for prehistoric remains. Such remains have been found in the vicinity of the site, which is located just to the south of the historic settlement.

9.2 In the event no archaeological features or finds were revealed. In the

past the site has been developed, in particular by the construction of the agricultural buildings and concrete farm yard, which may likely have truncated archaeological remains, if such were present. The site had not been subject to previous quarrying unlike the area directly to the north-east.

10 DEPOSITION OF THE ARCHIVE

10.1 Archive records, with an inventory, will be deposited with any donated finds from the site at the appropriate local repository. The HER Event No./Accession No. is ENN108338. The archive will be quantified, ordered, indexed, cross-referenced and checked for internal consistency.

ACKNOWLEDGEMENTS

Archaeological Solutions would like to thank Mr Alan Curtis for commissioning the project and for his assistance and Mr & Mrs Wilson for funding the project.

AS would also like to acknowledge the input and advice of Ms Liz Mordue, the Assistant Archaeological Advisor of Northamptonshire County Council.

BIBLIOGRAPHY

British Geological Survey (BGS), 1978, *Legend for the 1:625,000 Geological map of the United Kingdom (solid geology)*; London. Mansfield

Chartered Institute for Archaeologists (CIfA), 2014, *Standard and Guidance for Archaeological Field Evaluation*. IfA, Reading

Soil Survey of England and Wales (SSEW), 1983, *Legend for the 1:250,000 Soil Map of England and Wales*. SSEW, Harpenden

APPENDIX 1 CONTENTS OF THE ARCHIVE

| Records | Number |
|--------------------------------|-------------------------------------|
| Brief | Y |
| Specification | Y |
| Registers | 3 (Context, Drawing, Digital Photo) |
| Context Sheets | 3 |
| Site drawings A1 | 0 |
| Site drawings A3 | 1 |
| Site drawings A4 | 0 |
| Site photographs b/w | 9 |
| Site photographs colour slides | 9 |
| Digital Photographs | 31 |

PHOTOGRAPHIC INDEX



DP 1. The site. Looking north-west.



DP 2. Trench 1. Looking north-north-west.



DP 3. Trench 1. Looking south-east.



DP 4. Trench 1, north-west end. Sample section 1A. Looking north-east.



DP 5. Trench 1, south-east end. Sample section 1B. Looking south-west.



DP 6. Trench 1, south-east end. Ground test excavation. Looking north-east.



DP 7. Trench 2. Looking west-north-west.



DP 8. Trench 2. Looking south-east.



DP 9. Trench 2, north-west end. Sample section 2A. Looking north-east.



DP 10. Trench 2, south-east end. Sample section 2B. Looking south-west.



DP 11. Trench 3. Looking west-south-west.



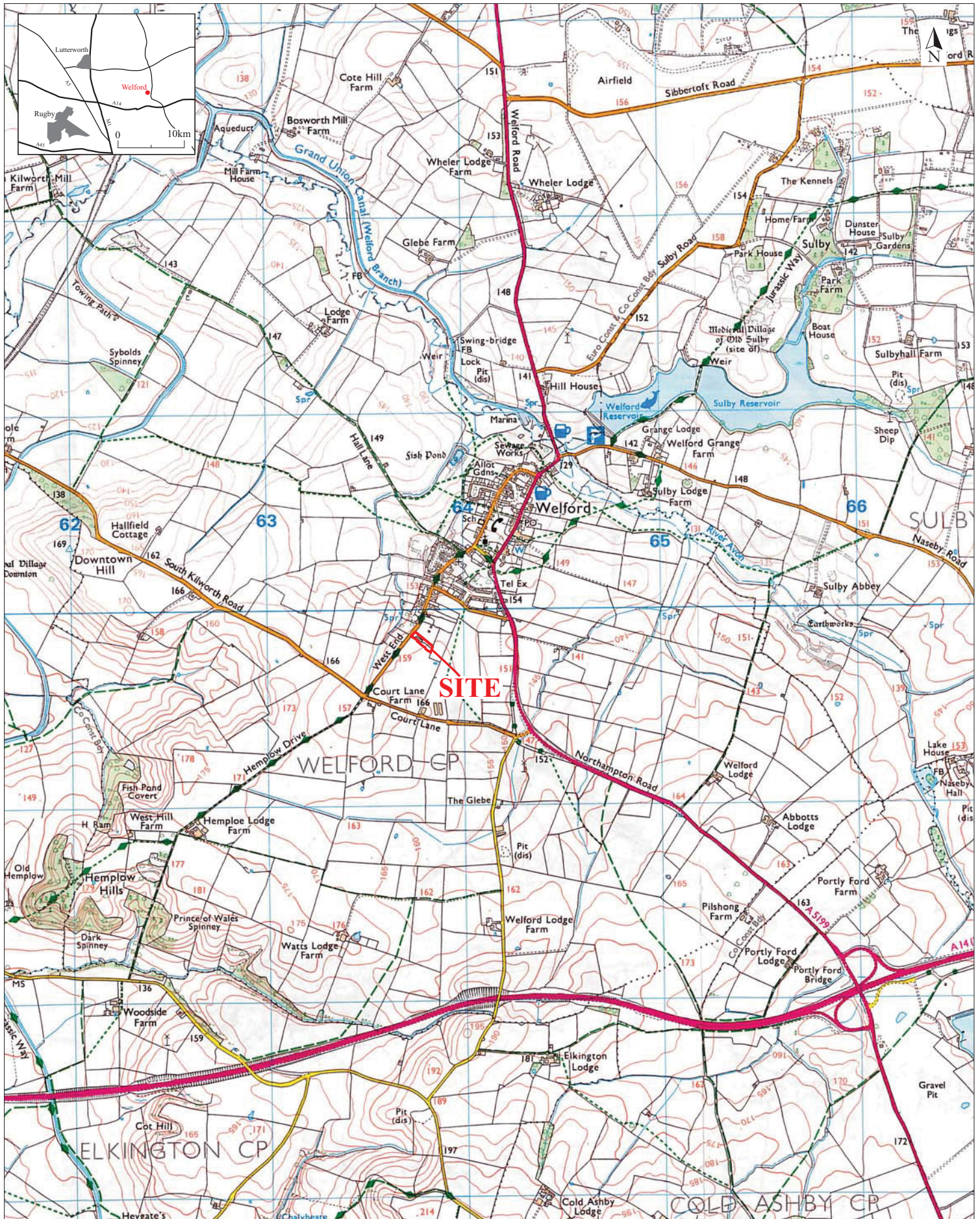
DP 12. Trench 3. Looking north-east.



DP 13. Trench3, north-east end. Sample section 3A with ground test excavation. Looking north-west.

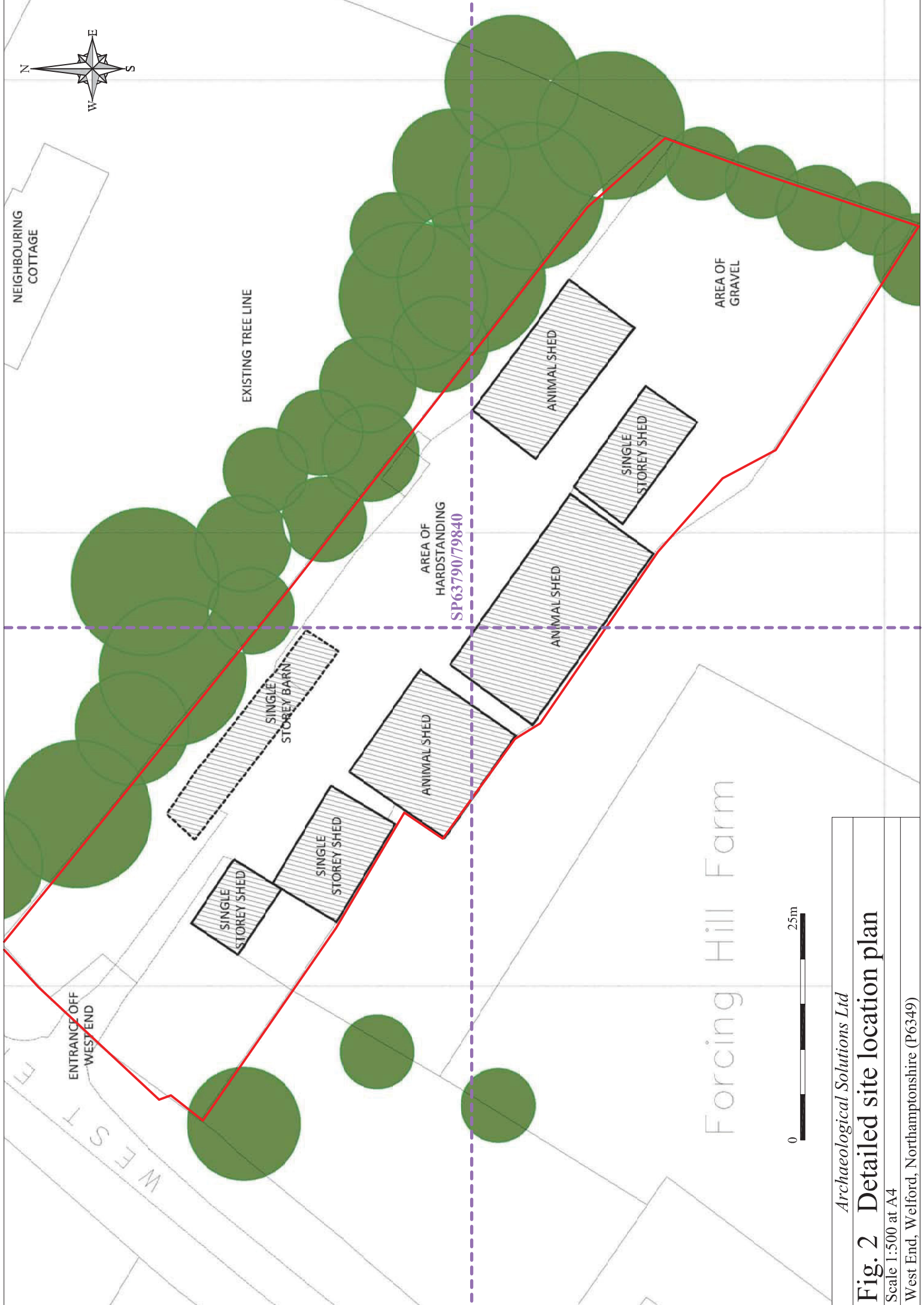


DP 14. Trench 3, south-west end. Sample section 3B. Looking south-east.



Reproduced from the 1999 Ordnance Survey 1:25000 map with the permission of Her Majesty's Stationery Office. © Crown copyright Archaeological Solutions Ltd Licence number 100036680

Archaeological Solutions Ltd
Fig. 1 Site location plan
 Scale 1:25,000 at A4
 West End, Welford, Northamptonshire (P6349)

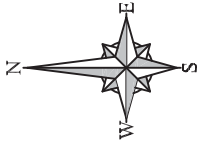


Archaeological Solutions Ltd

Fig. 2 Detailed site location plan

Scale 1:500 at A4

West End, Welford, Northamptonshire (P6349)

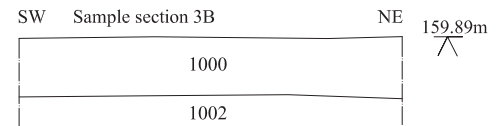
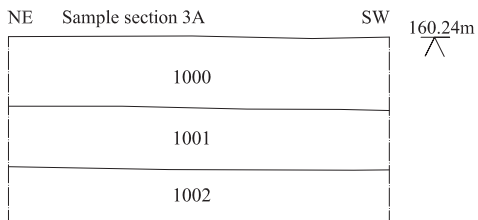
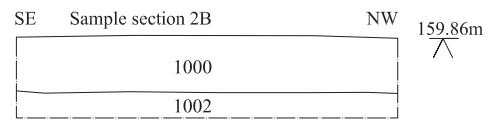
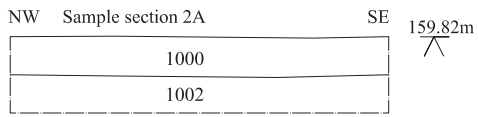
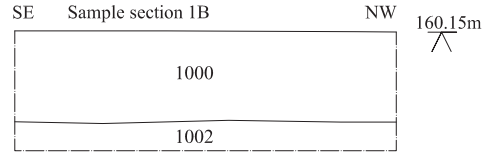
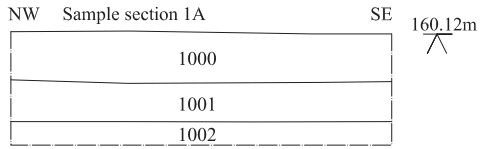


Archaeological Solutions Ltd

Fig. 3 Trenches locations on proposed plan

Scale 1:500 at A4

West End, Welford, Northamptonshire (P6349)



Archaeological Solutions Ltd
Fig. 4 Sample sections
 Scale 1:20 at A4
 West End, Welford, Northamptonshire (P6349)