
ARCHAEOLOGICAL SOLUTIONS LTD

**THE PRINT WORKS, 25 TAPSTER STREET, BARNET,
LONDON BOROUGH OF BARNET**

ARCHAEOLOGICAL OBSERVATION & RECORDING

HER Request No 12529

Authors: Zbigniew Pozorski	
NGR: TQ 2458 9658	Report No: 5120
District: London Borough of Barnet	Site Code: TPS 16
Approved: Claire Halpin MCIfA	Project No: 5807
Signed:	Date: 18 May 2016

This report is confidential to the client. Archaeological Solutions Ltd accepts no responsibility or liability to any third party to whom this report, or any part of it, is made known. Any such party relies upon this report entirely at their own risk. No part of this report may be reproduced by any means without permission.

Archaeological Solutions is an independent archaeological contractor providing the services which satisfy all archaeological requirements of planning applications, including:

Desk-based assessments and environmental impact assessments
Historic building recording and appraisals
Trial trench evaluations
Geophysical surveys
Archaeological monitoring and recording
Archaeological excavations
Post excavation analysis
Promotion and outreach
Specialist analysis

ARCHAEOLOGICAL SOLUTIONS LTD

**Unit 6, Brunel Business Court, Eastern Way,
Bury St Edmunds IP32 7AJ
Tel 01284 765210**

**P I House, Rear of 23 Clifton Road, Shefford,
Bedfordshire, SG17 5AF
Tel: 01462 850483**

**e-mail: info@ascontracts.co.uk
www.archaeologicalsolutions.co.uk**



twitter.com/ArchaeologicalS



www.facebook.com/ArchaeologicalSolutions



CONTENTS

OASIS SUMMARY SHEET

SUMMARY

- 1 INTRODUCTION**
- 2 DESCRIPTION OF THE SITE**
- 3 TOPOGRAPHY, GEOLOGY AND SOILS**
- 4 ARCHAEOLOGICAL AND HISTORICAL BACKGROUND**
- 5 METHODOLOGY**
- 6 DESCRIPTION OF RESULTS**
- 7 CONFIDENCE RATING**
- 8 DEPOSIT MODEL**
- 9 DISCUSSION**
- 10 DEPOSITION OF THE ARCHIVE**

ACKNOWLEDGEMENTS

BIBLIOGRAPHY

APPENDICES

- 1 HISTORIC ENVIRONMENT RECORD DATA (HER)**
- 2 CONTENTS OF THE ARCHIVE**

OASIS SUMMARY SHEET

Project details			
Project name	<i>The Print Works, 25 Tapster Street, Barnet, London Borough of Barnet</i>		
<i>In April and May 2016 Archaeological Solutions (AS) carried out an archaeological observation and recording at The Print Works, 25 Tapster Street, Barnet, London Borough of Barnet (NGR TQ 2458 9658). The monitoring was commissioned by Mr Richard Mason of Tapster Street Properties in compliance with a planning condition attached to planning permission for the construction of a block of 6 residential units.</i>			
<i>Barnet (formerly Chipping Barnet) is an historic roadside settlement, located on the former Great North Road between London and the North. The principal archaeological potential of the site was for 'backyard' remains of the medieval and post-medieval period associated with the historic core of Barnet (such as industrial features, property boundaries and refuse pits). It also had a potential for earlier remains, in particular for Romano-British period.</i>			
<i>In the event the monitoring revealed no archaeological features or finds.</i>			
Project dates (fieldwork)	<i>29/04 – 06/05/2016</i>		
Previous work (Y/N/?)	<i>N</i>	Future work (Y/N/?)	<i>N</i>
P. number	<i>5807</i>	Site code	<i>TPS 16</i>
Type of project	<i>Archaeological Observation & Recording</i>		
Site status	<i>-</i>		
Current land use	<i>Side yard of the former print works</i>		
Planned development	<i>New residential block of 6 units</i>		
Main features (+dates)	<i>-</i>		
Significant finds (+dates)	<i>-</i>		
Project location			
County/ District/ Parish	<i>Greater London</i>	<i>London Borough of Barnet</i>	<i>Barnet</i>
HER/ SMR for area	<i>Greater London HER</i>		
Post code (if known)	<i>EN5 5TH</i>		
Area of site	<i>c.200m²</i>		
NGR	<i>TQ 2458 9658</i>		
Height AOD (min/max)	<i>c.128m AOD</i>		
Project creators			
Brief issued by	<i>Advice from HE GLAAS</i>		
Project supervisor/s (PO)	<i>Zbigniew Pozorski</i>		
Funded by	<i>Tapster Street Properties</i>		
Full title	<i>The Print Works, 25 Tapster Street, Barnet, London Borough of Barnet: Archaeological Observation & Recording</i>		
Authors	<i>Pozorski, Z.</i>		
Report no.	<i>5120</i>		
Date (of report)	<i>May 2016</i>		

THE PRINT WORKS, 25 TAPSTER STREET, BARNET, LONDON BOROUGH OF BARNET

ARCHAEOLOGICAL OBSERVATION & RECORDING

SUMMARY

In April and May 2016 Archaeological Solutions (AS) carried out archaeological observation and recording at The Print Works, 25 Tapster Street, Barnet, London Borough of Barnet (NGR TQ 2458 9658). The monitoring was commissioned by Mr Richard Mason of Tapster Street Properties in compliance with a planning condition attached to planning permission for the construction of a block of 6 residential units.

Barnet (formerly Chipping Barnet) is an historic roadside settlement, located on the former Great North Road between London and the North. The principal archaeological potential of the site was for 'backyard' remains of the medieval and post-medieval periods associated with the historic core of Barnet (such as industrial features, property boundaries and refuse pits). The site also had a potential for earlier remains, in particular for Romano-British remains.

In the event the monitoring revealed no archaeological features or finds.

1 INTRODUCTION

1.1 In April and May 2016 Archaeological Solutions (AS) carried out an archaeological observation and recording at The Print Works, 25 Tapster Street, Barnet, London Borough of Barnet (NGR TQ 2458 9658; Figs. 1 & 2). The monitoring was commissioned by Mr Richard Mason of Tapster Street Properties in compliance with a planning condition attached to planning permission for the construction of a block of 6 residential units (LB Barnet Planning Approval Ref. B/00462/12).

1.2 The monitoring was undertaken in accordance with the requirements of the London Borough of Barnet as advised by the English Heritage (now Historic England) Greater London Archaeological Advisory Service (EH GLAAS), and a written scheme of investigation (specification) prepared by AS (dated 02/06/2014) and approved by EH GLAAS. The project conformed to the Chartered Institute for Archaeologists (CIfA) *Code of Conduct and Standard and Guidance for An Archaeological Watching Brief* (2014) and the HE GLAAS *Guidelines for Archaeological Projects in Greater London* (2015).

1.3 The principal objectives of the archaeological observation and recording were to identify any evidence of archaeological deposits and/or artefacts, and to determine the nature and extent of those deposits within the limits of the construction groundworks.

Planning policy context

1.4 The National Planning Policy Framework (NPPF 2012) states that those parts of the historic environment that have significance because of their historic, archaeological, architectural or artistic interest are heritage assets. The NPPF aims to deliver sustainable development by ensuring that policies and decisions that concern the historic environment recognise that heritage assets are a non-renewable resource, take account of the wider social, cultural, economic and environmental benefits of heritage conservation, and recognise that intelligently managed change may sometimes be necessary if heritage assets are to be maintained for the long term. The NPPF requires applications to describe the significance of any heritage asset, including its setting that may be affected in proportion to the asset's importance and the potential impact of the proposal.

1.5 The NPPF aims to conserve England's heritage assets in a manner appropriate to their significance, with substantial harm to designated heritage assets (i.e. listed buildings, scheduled monuments) only permitted in exceptional circumstances when the public benefit of a proposal outweighs the conservation of the asset. The effect of proposals on non-designated heritage assets must be balanced against the scale of loss and significance of the asset, but non-designated heritage assets of demonstrably equivalent significance may be considered subject to the same policies as those that are designated. The NPPF states that opportunities to capture evidence from the historic environment, to record and advance the understanding of heritage assets and to make this publicly available is a requirement of development management. This opportunity should be taken in a manner proportionate to the significance of a heritage asset and to impact of the proposal, particularly where a heritage asset is to be lost.

2 DESCRIPTION OF THE SITE

2.1 The site lies to the rear of the eastern side of the High Street, Barnet, bounded by Tapster Street to the west. The site comprises a narrow rectangular plot occupied mainly by The Print Works building with the development area located at the eastern end of the site fronting Tapster Street.

3 TOPOGRAPHY, GEOLOGY AND SOILS

3.1 The site lies on high ground of c.128m AOD above the valley of the Dollis Brook to the south. The land descends towards the east. The solid geology of the area is Pebble Gravel overlying Eocene clay of the Thames Group (London Clay) (British Geological Survey 1978). Soils on the site are unsurveyed due to urbanised character of the area although soils to the north are those of the Forest association described as slowly permeable seasonally waterlogged reddish fine silty and fine loamy soils, some with peaty surface horizon (Soil Survey of England and Wales 1983).

4 ARCHAEOLOGICAL AND HISTORICAL BACKGROUND

4.1 Prehistoric remains in the vicinity are limited but do include chance finds of Palaeolithic flint tools (e.g. GLHER 081851). During the Roman period, Barnet lay between the major north/south routes of Watling Street and Ermine Street. Work on The Bull Inn site at 68 High Street to the south (GLHER 081949) and The Mitre, 58 High Street, also to the south (GLHER 082277) have shown evidence for Roman occupation. Numerous horse bones and shoes (GLHER 081992, 081839 and 082242) and wells (GLHER 081889, 081848, 081844 and 081974) have been revealed along the High Street, with material dating from Roman through to post-medieval times.

4.2 Barnet (formerly Chipping Barnet) is an historic roadside settlement, located on the former Great North Road between London and the North. The historic core of the settlement was probably centered on the area of the 13th-century church of St John the Baptist to the south west (GLHER 222005). The prefix Chipping refers to the market place on the Great North Road, right of market first granted to the abbot of St Albans by King John in 1199 (Page 1912). Medieval and later settlement grew up to serve the needs of travellers along the Great North Road. Medieval inns are known along the High Street including the Red Lion at 70 High Street (GLHER 081841). Medieval pottery sherds are known from 74 High Street (GLHER 081833). Hadley Highstone to the north of the town was the scene of the famous Battle of Barnet in 1471.

4.3 Archaeological monitoring was carried out at 2-4 Tapster Street to the south (Pozorski 2013), during the excavation of foundations for a small development. No remains earlier than the late 19th – 20th century were revealed. A residual medieval pottery sherd was found within a modern layer.

5 METHODOLOGY

5.1 The principal element monitored was the mechanically-excavated ground reduction (c.0.70m depth) within the footprint of the proposed new building following the insertion of foundation piles (Fig. 2). Ground beam foundations were to be cast above this level.

5.2 The archaeological monitoring comprised the observation of all groundworks, the inspection of the subsoil and natural deposits for archaeological features and the examination of spoil heaps and the recording of soil profiles. Archaeological features and deposits were recorded using *pro-forma* recording sheets, drawn to scale and photographed as appropriate. Excavated spoil was checked for finds and the excavated area was scanned by metal detector.

6 DESCRIPTION OF RESULTS

6.1 Deposits located within the area of excavation were recorded in sample sections presented below.

<i>Sample section 1 (DP 4)</i> <i>North part of the site, facing south</i> <i>0.00 = 128.12m AOD</i>		
0.00 – 0.54m	L1000	Made ground. Mid to dark grey, friable, sandy silt with occasional CBM fragments.
0.54 – 0.70m+	L1001	Light grey, friable, gravel and silty sand.

<i>Sample section 2 (DP 8)</i> <i>South part of the site, facing north</i> <i>0.00 = 128.23m AOD</i>		
0.00 – 0.24m	L1002	Made ground. Mid to dark grey, friable, sandy silt with occasional CBM fragments.
0.24 – 0.30m	L1003	Pale yellow, loose, sand.
0.30 – 0.68m	L1000	Made ground. As above.
0.68m+	L1004	Natural mid to dark orangey yellow, loose, sandy gravel.

Description No archaeological features or finds were present.

7 CONFIDENCE RATING

7.1 It is not felt that any factors inhibited the recognition of archaeological features or finds during the programme of archaeological observation and recording.

8 DEPOSIT MODEL

8.1 The site was commonly overlain deposits of modern made ground (0.55 – 0.70m+ thick). The natural geology, L1004, was seen in the central/southern area of the site at c.0.60 – 0.70m below existing ground level and consisted of a mid to dark orange yellow, loose, sandy gravel.

9 DISCUSSION

9.1 The site had a potential for archaeological remains, in particular for medieval and post-medieval archaeology, so called 'backyard' remains associated with the historic core of Barnet. It also had a potential for earlier remains, in particular for Romano-British remains.

9.2 In the event no archaeological features or finds were revealed. The site appeared to have been extensively previously developed probably from the 19th century onwards and earlier deposits did not survive that activity.

10 DEPOSITION OF THE ARCHIVE

10.1 Archive records, with an inventory, will be deposited with any donated finds from the site at London Archaeological Archives and Resource Centre (LAARC). The archive will be quantified, ordered, indexed, cross-referenced and checked for internal consistency.

ACKNOWLEDGEMENTS

Archaeological Solutions would like to thank Mr Richard Mason of Tapster Street Properties for funding the project and for his assistance, and for the assistance of the building contractor Mr Lee Faulkner.

AS would like to acknowledge the input and advice of Mr Sandy Kidd of HE GLAAS, and Ms Kim Stabler (formerly of GLAAS), and the staff of the Greater London Historic Environment Record.

BIBLIOGRAPHY

British Geological Survey (BGS), 1978, *Legend for the 1:625,000 Geological map of the United Kingdom (solid geology)*: London. Mansfield

Chartered Institute for Archaeologists (CIfA), 2014, *Standard and Guidance for An Archaeological Watching Brief*. CIfA Reading.

Historic England Greater London Archaeological Advisory Service (HE GLAAS), 2015, *Guidelines for Archaeological Projects in Greater London*.

Pozorski, Z, 2013, *4-8 Tapster Street, Barnet, London; Archaeological Monitoring & Recording*, AS Report 4264

Soil Survey of England and Wales (SSEW), 1983, *Legend for the 1:250,000 Soil Map of England and Wales*. SSEW, Harpenden

APPENDIX 1 HISTORIC ENVIRONMENT RECORD DATA (HER)

The following sites are those that lie within a 500m radius of the assessment site. The table has been compiled from data held by the Greater London Historic Environment Record (GLHER).

SMR	NGR SP	Description
Prehistoric		
MLO61070	Centroid TQ 2501 9639	High Street: Queen Elizabeth's Girls School. Excavation "to rear of school grounds" by R. Walker in 1972 produced nineteen flint cores and other objects including arrow heads which may have been discarded rejects. Identified by "an expert at Verulam Museum". Archaeological Report Form states that only information is a press cutting in Barnet Museum, and finds with HADAS.
Roman		
MLO16370	TQ 2460 9650 (point)	A Bricked up Roman well discovered during building extensions in 1931. * Natural not applicable *
MLO25925	TQ 2464 9645 (point)	High Street (No. 58). Roman pottery sherds were recovered during the course of the excavation.
MLO16398	TQ 2457 9649 (point)	High Street (No. 68). Excavation produced evidence of Roman occupation including a wall running from the shop premises across the yard, a plain glazed roman jug about 14inches in height and a bricked up Roman well. * No record of natural *
Medieval		
MLO71854	TQ 2450 9640 (point)	HIGH ST. The village lay around the church of St John the Baptist (SMR 222005) with the market held in front. Often referred to as Chipping Barnet.
MLO79102	TQ 24552 96465 (point)	1. 5004 WOOD STREET (north side) Church of St John the Baptist TQ 2496 10/25 1.2.50 (Formerly listed as Parish Church of Chipping Barnet) II* GV 2. Altered extensively in circa 1873-5 by William Butterfield, the Church incorporates the mid 15th century building as its double north aisle. Flint with stone dressings in bands and chequerwork. Imposing west tower. Timber fleche by Traylen. Interior plastered. Nave roof double framed collar-braced with closely spaced scissor-braced rafters. Roof to 15th century building shows a flat panelled ceiling. Font cover, altar and reredos of stone and Purbeck marble by Butterfield (1880-82). Elaborately carved pulpit and unique set of carved pew-ends by Traylen. Organ by Hill circa 1876. Ravenscroft Chapel in south aisle contains fine C17 alabaster effigy of Thomas Ravenscroft, a local benefactor. Glass in north and south aisles by Henry Holiday in good Arts and Crafts manner circa 1887-89. Listing NGR: TQ2455296465
MLO60608	TQ 2455 9645 (point)	ST JOHN THE BAPTIST The insertion of a doorway through the east wall of the C15 north aisle of the church was observed by members of Hendon and District Archaeological Society (HADAS) during September 1994. The work revealed a dressed sandstone wall with plaster rendering. This stonework (Reigate stone) was recessed to a depth of 23cm, a skim of plaster covering the rear of the recess, the whole having been later infilled with brick, chalk and stone rubble. This architectural feature may be part of the original C15 church.
MLO16304	TQ 2470 9640 (point)	Chipping Barnet [Unspecified Churchyard]. Decorated & Glazed Floortile Product Of Kilns At Penn, Bucks Found In Unspecified Churchyard In Chipping Barnet. Possibly St John The Baptist ?See 222005 For Church, 091991 For Other Medieval Tiles From St Johns Church
MLO78278	TQ 24696 96477 (point)	Victors Way, Barnet {Medieval/post medieval burgrave plots/rubbish pits}. Probable medieval and post medieval burgrave plots, rubbish pits and external surfaces were found during an archaeological evaluation at Victors Way, carried out by Wessex Archaeology in 2004. Two evaluation trenches were excavated on land behind The Mitre public house, within the historic core of Barnet. The trenches revealed the presence of probable medieval deposits associated with burgrave plots to the rear of extant late medieval and post-medieval buildings fronting onto Barnet High Street. External surfaces and pits containing domestic rubbish were also recorded. (1)
MLO98226	Centroid TQ	High Street (36-38), High Barnet . A watching brief was carried out by

	24730 96416	Pre-Construct Archaeology between 19th - 24th May 2006. Chalk and stone medieval foundations were recorded as well as pottery dated to the mid 14th to mid 15th century. Post medieval foundations were also recorded as well as a well and soakaway. *the natural was recorded at an upper height of 124.90m OD* Updated by R Leggett (3rd May 2007)(1)
MLO1629	Centroid TQ 2472 9634	High Street (Nos 19-25), Chipping Barnet {Medieval yard, medieval/post medieval building}. A hard pebble surface of probable medieval date and the foundation of a medieval to post medieval building were found through excavation at 19-25 High Street, Chipping Barnet, by the Hendon and District Archaeological Society in 1990. The surface was interpreted as being a back-yard for cattle and horses. The layer produced a large number of medieval pottery sherds datable to AD 1150 – 1400. Further pottery sherds were recovered across the site. A mortared flint and tile wall footing, thought to represent a foundation base for a timber building, of a style datable to AD 1400 -1700, was also recorded. A concentration of similar flint nodules to those found in the wall footing * Natural London clay was recorded but no depth is cited in the sources *
MLO67826	TQ 2461 9654 (point)	Tapster St (No. 10-12). Natural gravel was cut by a rubbish pit dated to the mid C12th. Several large quarry pits cut the natural gravel, one of which was dated to the 14th Century.
MLO16303	TQ 2450 9650 (point)	High Street. Medieval cooking jar with everted rim in a buff ware with a green slip. Found some time prior to 1965, exact date not known. * Natural does not apply *
MLO16613	TQ 2470 9640 (point)	High Street (Beneath). Medieval steelyard weight with lead core. *Natural not applicable*
MLO16341	TQ 2456 9649 (point)	High Street (No 70). Wattle And Daub Found During Restoration Work And Probably Associated With The Medieval Red Lion Inn
MLO17504	TQ 2459 9648 (point)	High Street (No 74). Lower part of late medieval jug found during digging of shop foundations.
MLO14813	TQ 2460 9647 (point)	High Street (No 76). Base of Medieval red ware jug found in 1960.
MLO60186	TQ 2471 9636 (point)	High Street (No. 29). Several sherds of South Herts Greyware pottery were recovered from the topsoil. * Natural level not quoted *
MLO16342	TQ 2461 9647 (point)	High Street (No. 66). Globular Jug found in 1934 under the foundation of an inn at No. 66 High Street. NB. Source now defunct, no other written source available for further information.
MLO16415	TQ 2450 9651 (point)	High Street (The Bottleneck). Early 14th century shoe dated by the British Museum.
MLO16414	TQ 2456 9646 (point)	Wood St (Chancel Of St Johns Church). A Medieval Decorated Glazed Floortile With A Slip Painted Paschal Lamb Within Two Intersecting Squares. Found In The Chancel During Alterations In 1875.
MLO99133	Centroid TQ 24696 96477	Victors Way, High Barnet, {medieval to post medieval occupation}. An archaeological excavation was undertaken in 2005 by AOC Archaeology following the identification of remains in earlier watching briefs and evaluation prior to a development including ground reduction of 2m. Site code VWA05. The earliest evidence on the site were ditches and a post hole dating to the medieval period. One of the ditches may have formed a property boundary. Post medieval features recorded included brick and ceramic drainage systems, a large east to west running ditch, pits of varying size, postholes, stakeholes, garden or yard deposits and a gravel path. In addition there was a 15th to 16th century structure. Occupation was particularly dense during the post medieval period, with extensive numbers of features recorded. Please see (1) for further information.
MLO59181	Centroid TQ 2429 9640	Wood Street, [Victoria Maternity Hospital], Barnet, {medieval ditch and site of Georgian house}. An archaeological evaluation was undertaken by Hendon and District Archaeological Society prior to planning consent for proposed new hospital buildings on the site. Site code VMH93. Three trial trenches were excavated within the footprints of the proposed structures. An early medieval linear feature was recorded in two trenches, identified as a probable ditch. Medieval pottery sherds, pits and garden features dating to the 18th to 20th century, and remnants of a wing of the Georgian mansion previously on this site, were also recorded. *natural clay and gravel at 128.75m OD* Fore more information see (1-5).
MLO79104	TQ 24368 96470 (point)	1. 5004 WOOD STREET (north side) No 32 TQ 2496 10/16 II GV 2. Possibly a mid 16th century timber framed tenement house. Rendered. Two windows. Two storeys. Canted bay to ground storey. Two light wooden casements above. Old tile roof with tall brick stack. Listing NGR: TQ2436896470
MLO78994	TQ 24554 96415 (point)	TUDOR HALL (PART OF BARNET COLLEGE OF FURTHER EDUCATION). 1. WOOD STREET 5004 (south side) Tudor Hall (Part of Barnet College of Further Education) TQ 2496 10/36 II GV 2. 16th century altered 19th century. Red brick Hall. Three large modern mullioned windows, 4 lights with one transom. Hexagonal tower at each

		end. Tile roof behind parapet. Dormer.
Post-medieval		
MLO67828	TQ 2461 9654 (point)	Tapster St (No's 10-12). Medieval pitting on the site was sealed by post-medieval dumping to raise the ground level. This was concentrated to the E of the site suggesting backyard activity behind houses along the Tapster St frontage.
MLO76528	Centroid TQ 2460 9664	Tapster Street, Barnet, EN5. A linear cut greater than 2.3m in width, orientated north to south and running for more than 9.0m. It had a highest level of 121.12m OD, a maximum recorded depth up to 1.65m and was filled by a dark brown grey sandy silt with occasional finds. It probably represents the a Post- Medieval fill. * Natural sand and gravel was recorded at 122.33m OD *
MLO99126	Centroid TQ 24617 96379	Wood Street, [Barnet College], Barnet, {early post medieval property boundary}. An archaeological evaluation was carried out in 2008 by Archaeology South-East. Site code BCV08. Four trenches were excavated but only one feature of archaeological interest was discovered, which was identified as a possible early post medieval property boundary. This linear feature was aligned with the current and historical property boundaries. There it is probable that this feature is demarcating a tenement to the rear of the street frontage. *Stanmore Gravels recorded at 127.331mOD* For more information see (1).
MLO16615	TQ 2450 9668 (point)	High Street (Midland Bank). A 17th century well with a timber frame and containing some Rhenish glass and stoneware. (1-2) * Natural not applicable *
MLO75802	TQ 2454 9650 (point)	High Street (No 72). The watching brief produced evidence for an 18th century brick cellared building, which was truncating the natural sandy gravel. The building had been repaired with yellow stock bricks and internal partition walls appear to have been built in the 19th century within the cellar. The curvature of the former vaults in the cellars was still visible and the base of the cellar was 2m below street level. In a section to the rear of the site a demolition layer was visible, although it was largely truncated away by the building. The layer dates to the 16th or early 17th century and it contained roof tile, green-glaze pottery, clay tobacco pipe and pebble inclusions..
MLO60187	TQ 2471 9636 (point)	High Street (No. 29). An unusual-shaped pit may have been a soakaway. Finds within it included Borderware, Redware and Cistercian Ware sherds. A brick, tile and flint wall was probably associated with a demolished section of the Red (now Dandy) Lion pub. * Natural level not quoted *
MLO25926	TQ 2464 9645 (point)	High Street (No. 58). An excavation to the rear of The Mitre at Number 58 High Street produced the remains of a Victorian building with earlier construction debris, dated by associated pottery sherds to 17th – 18th centuries. Earlier Medieval and Roman pottery sherds were also recovered.
MLO79007	TQ 24660 96458 (point)	THE MITRE PUBLIC HOUSE . 1. 5004 HIGH STREET Barnet No 58 (The Mitre Public House) TQ 2496 10/29 II GV 2. C17, timber framed. Refronted 19th century and stuccoed. Three window, 2 storey. Double bay window to ground storey. Good etched glass.
MLO78683	TQ 24666 96451 (point)	1. 5004 HIGH STREET Barnet No 56 TQ 2496 10/31 II GV 2. Probably early C17. Timber framed. Stuccoed with modern shop front and carriage entrance on left. Two storeys, one window. Listing NGR: TQ2466696451
MLO78993	TQ 24436 96421 (point)	1. 5004 WOOD STREET (south side) No 35 (The Bow House) TQ 2496 10/42 26.9.57 II 2. Late C17, but with early 19th century features to front elevation. Repaired after bomb damage. Rendered with pantiled roof. Two storeys and attic. Ground floor has large bowed multi-paned shop window and door. First floor has four 16 pane sash windows. Five coved wood modillion eaves cornice. The flat topped dormers. All the features were replaced except the door and shop surround. Garage inserted to left. Listing NGR: TQ2443696421
MLO78593	TQ 24470 96460 (point)	1. 5004 WOOD STREET (north side) No 10 TQ 2496 10/23 26.9.57 II 2. Early C18. Red brick with parapet and tiled roof. Two storeys, 2 windows, flush framed sashes with glazing bars. Listing NGR: TQ2447096460
MLO79103	TQ 24470 96467 (point)	1. 5004 WOOD STREET (north side) No 12 TQ 2496 10/22 26.9.57 II 2. Early C18. Rendered, with tile roof. Two storeys, 2 windows, 19th century sashes. Plain door. Listing NGR: TQ2447096467
MLO78815	TQ 24452 96468 (point)	1. 5004 WOOD STREET (north side) Nos 14 and 16 TQ 2496 10/21 26.9.57 II 2. Early C18. Rendered. Two storeys, 2 windows. Listing NGR: TQ2445296468
MLO78589	TQ 24532 96435 (point)	1. WOOD STREET 5004 (south side) No 15 TQ 2496 10/37 1.2.50 II 2. Early C18, but may contain earlier work. Rendered with tile roof. Two storeys, the windows, sashes with glazing bars in 2 storey canted bays. Central pedimented doorcase. The ground floor has 4 Tuscan pilasters carrying a band which crosses the top of the door but is broken by the windows. Steeply pitched roof with tall brick stack. Listing NGR:

		TQ2453296435
MLO78812	TQ 24532 96435 (point)	1. 5004 WOOD STREET (south side) No 17 TQ 2496 10/38 II GV 2. Early C18. Timber framed with brick nogging. Stuccoed with almost flush sashes. Two storeys. In 2 halves each one window wide with flanking door and central first floor window. Sashes with glazing bars. Through passage in centre behind 6 panel door. Tile roof. Included for group value. Listing NGR: TQ2453296435
MLO78594	TQ 24438 96469 (point)	1. 5004 WOOD STREET (north side) No 18 TQ 2496 10/20 26.9.57 II 2. Early C18, restored. Rendered with tiled roof. Two storeys, 2 windows, canted bays below, tripartite sashes above. Central pedimented doorway, 6 panel door with 2 glazed panels. All features were restored after severe bomb damage. Listing NGR: TQ2443896469
MLO78590	TQ 24508 96433 (point)	1. 5004 WOOD STREET (south side) No 27 TQ 2496 10/40 II GV 2. Altered early C18. Two windows wide with blank recessed panel over central entrance. (Sashed windows with margin panes). Ground storey. One window wide to right of entrance, 2 windows to left. Stucco pilasters and plain pediments to all windows on front. Six panelled door - plain fanlight 2 storey with attic in tiled mansard behind parapet. Roughcast. Stair turret to rear. Later 2 storey and one storey addition on right hand side. Listing NGR: TQ2450896433
MLO78992	TQ 24425 96480 (point)	1. 5004 WOOD STREET (north side) No 20 TQ 2496 10/19 26.9.57 II 2. Early/mid C18. Red brick with tiled roof. Two storeys and attic, 6 windows, sashes with glazing bars in cambered heads. Doorcase with canopy on brackets, 6 panel door. Three flat topped dormers. All features were restored after severe bomb damage. Listing NGR: TQ2442596480
MLO79100	TQ 24512 96432 (point)	1. 5004 WOOD STREET (south side) Nos 19 to 25 (odd) TQ 2496 10/39 II GV 2. Late C18/early 19th century. Three storeys. Four windows with carriage entrance. Stuccoed slate roof with plain overhanging eaves. Double hung sashes with glazing bars. Included for group value. Listing NGR: TQ2451296432
MLO79071	TQ 24635 96470 (point)	1. 5004 HIGH STREET Barnet No 66 TQ 2496 10/26 II GV 2. Late C18 mid 19th century stuccoed front. Double pitch roof. Modern shop front. Three storeys, 4 windows. Modern brick extension at rear, not of special interest. Listing NGR: TQ2463596470
MLO78813	TQ 24298 96401 (point)	VICTORIA MATERNITY HOSPITAL 1. 5004 WOOD STREET (south side) Victoria Maternity Hospital (No 55) TQ 2496 10/46 II GV 2. Three bay C18 house with early 19th century stucco refronting to form 7 bay symmetrical facade. Two storeys. Sash windows with glazing bars. Much flat moulding; drafting to ground storey; framing pilaster strips. Centre bay slightly broken forward under pediment with coupled pilaster porch below. Parapet with cornice. C18 roof with slates. Three storey canted bay on rear elevation.
19th – 20th century		
MLO103640	Centroid TQ 24481 96355	Manor Close off Wood Street/Orchard Road/Marys Lane, [Old Court House Recreation Ground], Chipping Barnet, Barnet, EN5 4ND, 19th Century area used for pasture, a brewery and stables. Recreation ground since 1924. At one time Barnet was part of Middlesex Forest. Throughout the C19th, the land that is now the Recreation Ground and the houses fronting onto Wood Street were owned by the Rumball family. When Sampson Rumball died in 1827 ownership passed to his son Samson Augustus Rumball who leased the plots for pasture, two houses, a brewery and stables. The Barnet Brewery Company traded here intermittently from the C18th until its closure in 1909, and in 1911 the brewery site was offered to Barnet Urban District Council for council offices, who in 1912 purchased the site for £1,000. The Council then purchased the freehold of the old Court House Estate in 1923 and opened the recreation ground on the south side of the gardens in 1924; Barnet Bowls Club was founded here in 1926. The building on Wood Street, which has been Barnet Museum since 1938, was also one of the Rumball properties; for a time it was a private school, Barnet College for Girls, which had closed by 1911. The park has a pond, shrub and flower beds and a fine variety of trees which are marked as a tree trail including black mulberry, honey locust, Persian ironwood, dawn redwood, paper-bark maple, Brewer's weeping spruce, false acacia, Monterey pine, Scots pine, English and red oak, willow-leaved pear. P Taylor and J Corderm, 'Barnet, Hadley and Totteridge: a pictorial history' (1994); LB Barnet leaflet (1)
MLO75359	TQ 24626 96576 (point)	Moxon Street (No. 13-15) and Tapster Street (No. 18-20). A frogged red brick and concrete foundation pad (0.15m thick) was found in Pit 1, along with an earlier foundation composed of frogged 19th or 20th century redbrick (0.47m thick), which stood on top of the foundation pad. To the west of the modern foundation pad was a 0.5m thick pale greyish yellow mortar layer, starting and finishing at the same level, and which is probably the backfill of a foundation trench. * The lowest observed

		deposit was a soft greyish-brown sandy clay with occasional brick dust inclusions, this may have been a disturbed natural deposit, recorded at a depth of 0.85m - 1.15m OD *
MLO75803	TQ 24626 96576 (point)	Moxon Street (No. 13-15) and Tapster Street (No. 18-20). Three brick cellars that fronted onto Tapster Street frontage were recorded in trench 1. The brick work is all thought to be 19th century in date, although there were several different phases of activity present. A cellar in the north west part of the trench was infilled with demolition rubble and it had a brick drain to the north, which was cut by a later brick-lined cesspit. Another brick-lined cellar in the north east corner of the trench had a tile floor and reused the wall of the cesspit. To the south west there was another brick cellar which was infilled with demolition rubble. It was probably in use at the same time as another brick-lined cesspit to the east of the trench and this was truncated by a brick well. A 19th century brick-lined well was recorded in trench 1. Two brick-lined cesspits were found in trench 1. The brick work indicates they are 19th century in date, but there are clearly different phases of activity. * Natural gravel was recorded between 125.0m – 125.50m OD *
MLO75874	Centroid TQ 2460 9664	Tapster Street, Barnet, EN5. A probable linear ditch cut and fill and a further fill below post-medieval layers but of uncertain date was found towards the west of the site. A dump layer was present on the eastern side of the middle of the site, also of unknown date. 19th c and 20th c building/ occupation debris was present on both the western and eastern sides of the site. A chalk floor surface was found to the west of the site and it is thought to be of 19th c or early 20th c date. A masonry basement wall made of pink and yellow brick and concrete foundations indicate a 20th century building on the eastern side of the site. A 20th century construction deposit and hardcore base was also found. 19th and 20th century garden soils was present on both the western and eastern sides of the site. In the middle area of the site a 19th c brick drain and its cut were exposed. The drain was constructed of orangy red slightly frogged brick of 230x100x70mm bonded by beige mortar. It was circular in cross-section with a diameter of 0.5m and an excavated length of 4.5m, running from south-west to north-east. * Natural sand and gravel was recorded at 122.33m OD *
MLO78595	TQ 24374 96468 (point)	1. 5004 WOOD STREET (north side) No 30 TQ 2496 10/17 8.8.74 II 2. Early 19th century. Three storeys stucco. Four windows. Slate roof with plain overhanging eaves. Double hung sashes with glazing bars. Carriage door with segmental arch to left of narrow central door. Listing NGR: TQ2437496468
MLO79101	TQ 24335 96409 (point)	1. 5004 WOOD STREET (south side) No 53 TQ 2496 10/45 26.9.57 II 2. Early 19th century. Yellow brown brick with hipped slate roof. Two storeys, 3 windows, sashes with glazing bars. Central porch with 4 Ionic columns and plain door in arched head. Listing NGR: TQ2433596409
MLO78591	TQ 24359 96414 (point)	1. 5004 WOOD STREET (south side) Nos 47 and 49 TQ 2496 10/44 II GV 1. Circa 1830. Pair of 2 window wide, 2 storey houses, faced in yellow stock brick. Projecting wings with recessed semi-circular headed door. Semi-circular headed windows to ground storey. Central brick chimney stack. Slate roof. Listing NGR: TQ2435996414
MLO79070	TQ 24672 96443 (point) TQ 24672 96443 (point)	1. 5004 HIGH STREET Barnet Nos 52 and 54 TQ 2496 10/32 II GV 2. Mid 19th century. Stuccoed points. No 52. Two storeys, 2 windows wide. No 54. Two storeys, one window wide. Modern shop fronts. Tiled roofs. C17 or earlier timber framing at rear Listing NGR: TQ2467296443
MLO78684	TQ 24520 96600 (point)	1. 5004 HIGH STREET Barnet Nos 114 to 118 (even) TQ 2496 10/4 II 2. Mid 19th century or earlier 3 storey, 4 window wide. Stuccoed. Doric pilastered shop front to Nos 116-118. Modern shop front to No 114. First floor windows altered. Original glazing bars to second floor. Banded at second floor level and with continuous cornice and parapet. Listing NGR: TQ2452096600
MLO78787	TQ 24589 96560 (point)	1. 5004 MOXON STREET, BARNET No 9 TQ 2496 10/5 II 2. Circa 1840. Yellow stock brick house. Three windows, 2 storeys with basement. Central entrance door and blank recessed panel over. Gauged brick arches with curved sashes to ground storey. Good fanlight. Modern door. Low pitch hipped slate roof. Listing NGR: TQ2458996560
MLO78814	TQ 24490 96468 (point)	1. 5004 WOOD STREET (north side) Church House TQ 2496 10/24 II GV 2. Late 19th century. Two storeys 6 bays. Faced in random flint with stone dressings, in a neo-Tudor style. Stone mullion and transom windows and carriage arch in left hand bay. Porch in second bay from left, simple arched doorway. Tile roof with raised gable wall to right surmounted by a Maltese cross. Listing NGR: TQ2449096468
MLO78453	Centroid TQ 2467 9638	The Felix and Firkin Public House, Great North Road, Barnet {19th century? Hotel, Later Public House}. EXTERIOR: Seven-bay front to the street. End bays slightly projecting. Central Corinthian doorway to centre, with pedimented window above within a stone surround. Rusticated brickwork to ground floor, entrance flanked by bow windows.

		<p>9/9 pane sash windows with brick arches and shutters. Modillion cornice. Hopper-heads dated 1930. Left-hand bay has a blind arch in yellow brick at first floor, with a large console beneath, carrying a wrought iron bracket supporting a carved figure of a red lion. Canted corner to south-east with scallop-headed doorcase. Five-bay return elevation with Corinthian doorcase to left-hand bay, next to a projecting square tower, with square windows, capped with a pyramidal roof with finial. Rear elevation arranged on two sides around a courtyard, with arched openings to ground floor (that to the tower is blind, with rusticated voussoirs in yellow brick). 9/9-pane windows to first floor, 3/6-pane windows to second floor. Lower projecting continuation to west. INTERIOR: Ground floor has been much altered already. Fretwork staircase to first floor remains in situ, lit at first floor landing level with a circular skylight with a sunburst effect in blue and yellow glass. Large room to the rear extension retains its decorative plasterwork. HISTORY: This site has a long history of use as a coaching inn, going back to the 15th century, positioned on a major road into London: the earliest reference to an inn on this site is to a messuage, 'late called the Cardinal's Hat and now the Antelope' in 1439. By the later 19th century it had become a 'Masonic, Family and Commercial Hotel'. The site of the coaching inn was truncated in 1901 on the laying-out of Fitzjohn Avenue to the south. It was rebuilt in 1930 by the Meux Brewery, using their in-house architect, William Foster. The prominent carved lion, on the dramatic wrought iron bracket, were re-used from the earlier building. The new premises included a banqueting room, two dance halls and a Masonic lodge, in addition to hotel rooms. Despite having had its ground floor changed, it remains a very good example of an inter-war road-house in the Neo-Georgian style, drawing on a wide range of stylistic sources for inspiration. Extensive alterations were carried out in 1985; the ground floor currently (July 2002) being altered. SOURCES: Barnet building control records; (1-3)</p>
MLO101417	Centroid TQ 24478 96426	<p>Wood Street, (No.29), [Barnet Registry Office], Barnet {Former Early 20th Century Council Offices}. MATERIALS: Red brick with some burnt headers, laid in English bond; lighter red brick dressings; stone dressings; clay tile roof. PLAN: Rectangular plan; 2 storeys high. Interior comprises ground floor vestibule with offices to either side, leading to entrance hall, with stair to left hand side, two further offices to rear of entrance hall. Council chamber and ante-room on upper floor with further offices to rear. EXTERIOR: Symmetrical front (N) elevation of five bays. Stone plinth. Stone doorcase with attached Ionic columns and broken-base segmental pediment bearing carved relief coat of arms. Doorhead with swept moulding, inscribed 'BARNET UD COUNCIL OFFICES' beneath. Recessed aprons to first-floor windows. Timber modillion eaves cornice broken by semi-circular pediment with oculus. Panelled entrance doors. Hipped roof; four tall chimney stacks, one to each side and two to rear, with recessed semi-circular headed panels. Windows to all elevations have gauged brick arches, those to front with keystones; timber multi-pane sashes with exposed boxes. Side (W) elevation has pair of keyed oculi lighting the upper-floor council chamber. Cupola to roof. INTERIOR: Internal porch leads through timber glazed doors to vestibule with wood boards to either side bearing names of civic dignitaries up to 1965; that to the left for Barnet UDC, that to the right relocated from the former borough offices of East Barnet UDC. Elliptical arch through to entrance hall. Timber well stair with close-string and twisted balusters. Panelled double doors with moulded architrave to council chamber. Council chamber has oak dado panelling, moulded plaster wall panels and deep coved plaster ceiling, double doors to ante-room. Ante-room finished in similar manner. Most internal joinery original. Some simple chimneypieces in the lesser rooms, which are otherwise without features of interest. HISTORY: Originally the municipal offices for Barnet Urban District Council, formed in 1894, then in Hertfordshire. A competition was held for the design in 1913; the winning entry was that of Henry Arthur Cheers who designed a number of public buildings. However, WB Chancellor of Lichfield was selected as surveyor in 1914 and produced plans for the final scheme. The building became a registry office after 1965 when Barnet UDC, along with four neighbouring boroughs, were merged into the present London Borough of Barnet. SUMMARY OF IMPORTANCE: Of special interest as a handsome, well-detailed municipal building in the neo-Baroque style. It is one of only a few unaltered surviving examples of the smaller purpose-built local government headquarters which were built to serve the expanding suburban fringes of late C19 and early C20 London. SOURCES: Pevsner, The Buildings of England, London 4: North, p 170; English Heritage, London's Town Halls, 1999 Barnet Local Studies and Archives (1-2) This building is listed under the Planning (Listed Buildings and Conservation Areas) Act 1990 as amended for its special architectural or</p>

		historic interest. (3)
Undated		
MLO78372	Centroid TQ 24806 96380	High Street (No. 16-20a), High Barnet . An archaeological evaluation was conducted by T.Bradley on behalf of PCA between the 4th and 9th May 2005. The evaluation consisted of 5 trenches spread over the area of the proposed development. Maximum depth of excavation was c. 1.4m below ground level. The evaluation found evidence for natural gravels (grading upwards to subsoil) across the steeply inclined site at heights between 125.60m OD and 131.09m OD. Underlying pale clays were exposed in places with heights from 125.05m OD to 131.24m OD. The evaluation found extensive evidence of truncation, disturbance and levelling, in many places removing all or most of the original soil profile. Made ground, frequently with abundant brick and tile fragments was found over most of the site. Only a few archaeological features were present, or have survived, and these are considered to be post-medieval in date, relating to boundaries and outbuildings.
MLO16403	TQ 2458 9648 (point)	High Street (No. 68). Excavation undertaken by HADAS in the Garden of the Old Bull Public House in 1982. This report identifies the absence of archaeological remains within the study area. Updated by R Cummings (4th July 2006)
MLO77415	TQ 24462 96636 (point)	LAND ADJACENT TO 3-5 SALISBURY ROAD, BARNET. No significant archaeological features or finds were discovered

APPENDIX 2 CONTENTS OF THE ARCHIVE

Records	Number
Brief	N
Specification	Y
Registers	3 (Context, Drawing, Digital Photo)
Context Sheets	5
Site drawings A1	0
Site drawings A3	0
Site drawings A4	1
Site photographs b/w	0
Site photographs colour slides	0
Digital Photographs	19

PHOTOGRAPHIC INDEX



DP 1. The site. Looking west.



DP 2. Ground reduction in north part of the site. Looking north-west.



DP 3. North part of the site. Looking north-west.



DP 4. North part of the site. Sample section 1. Looking north.



DP 5. Central part of the site. Looking south-west.



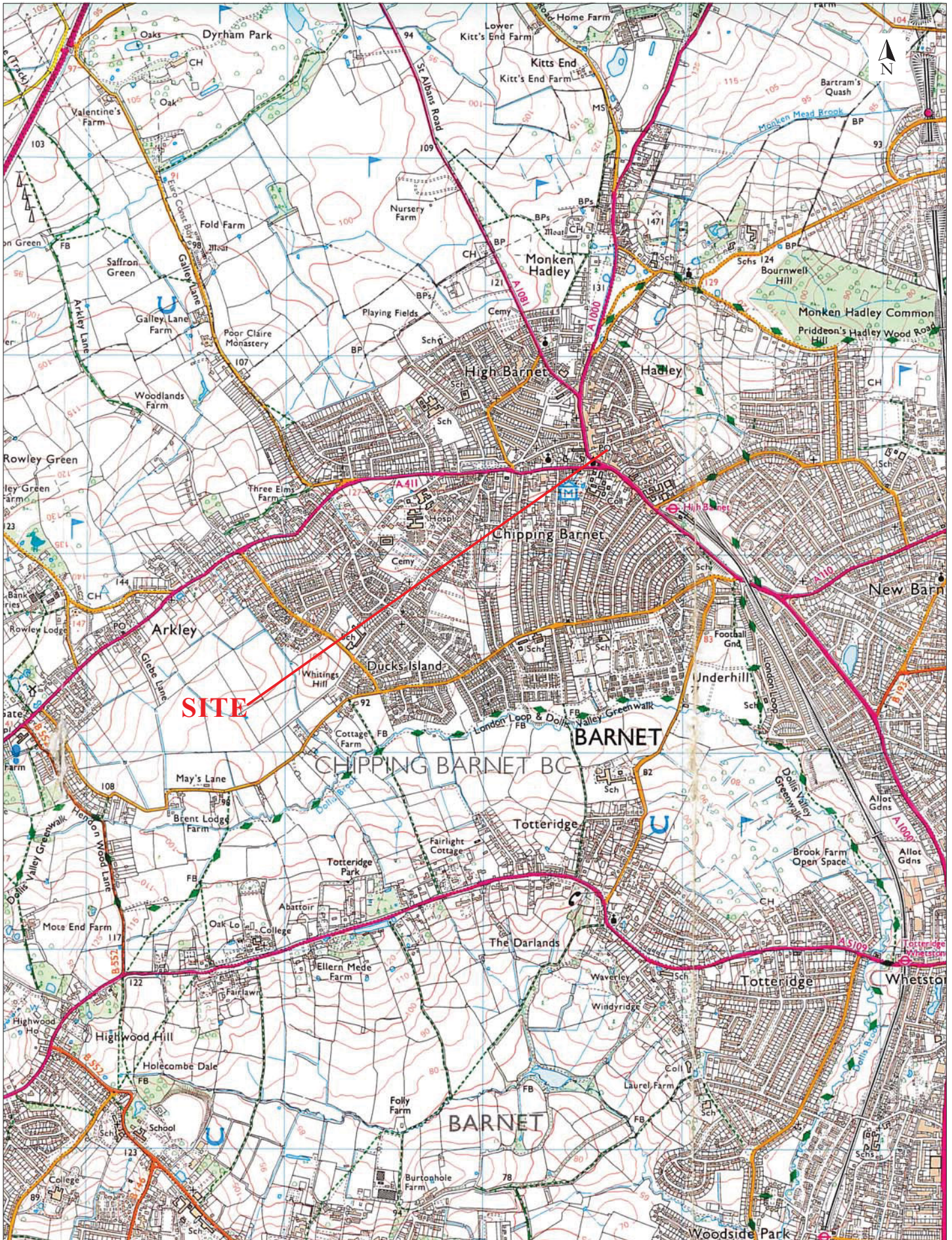
DP 6. South-east part of the site. Looking south.



DP 7. South part of the site. Looking southwest.

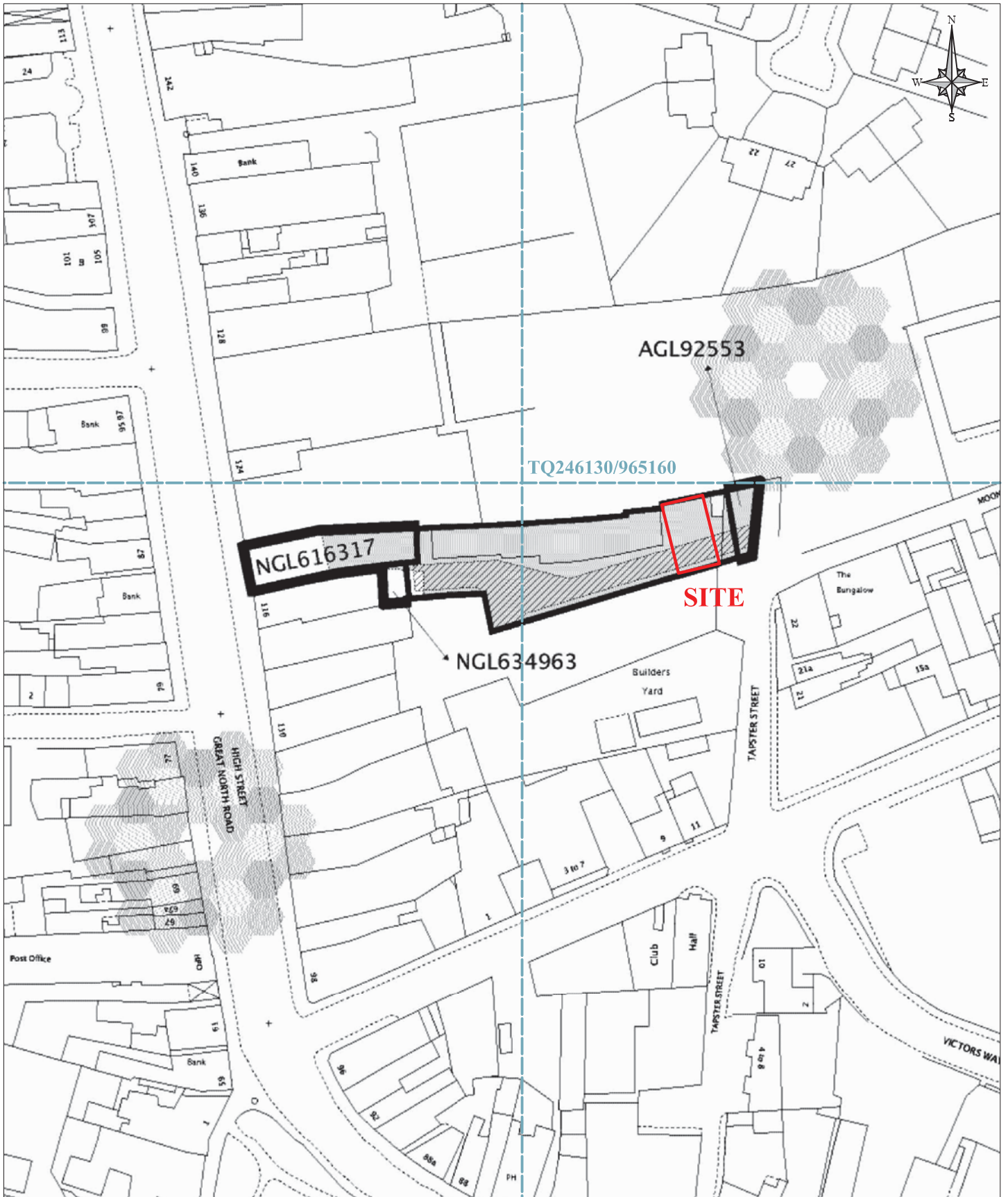


DP 8. South part of the site. Sample section 2. Looking south.



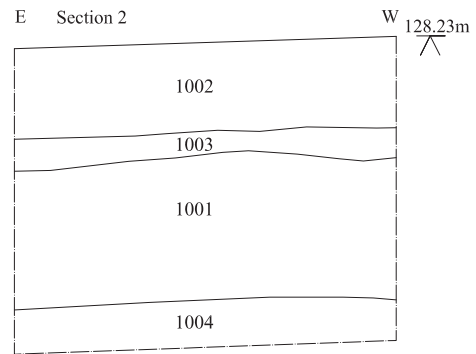
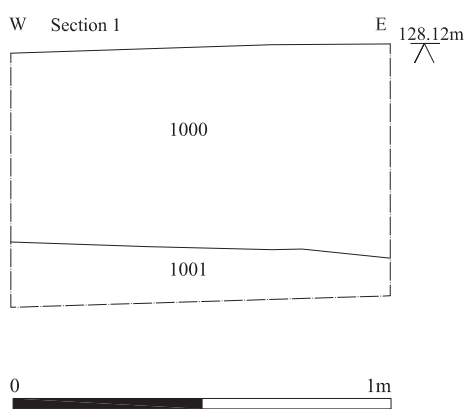
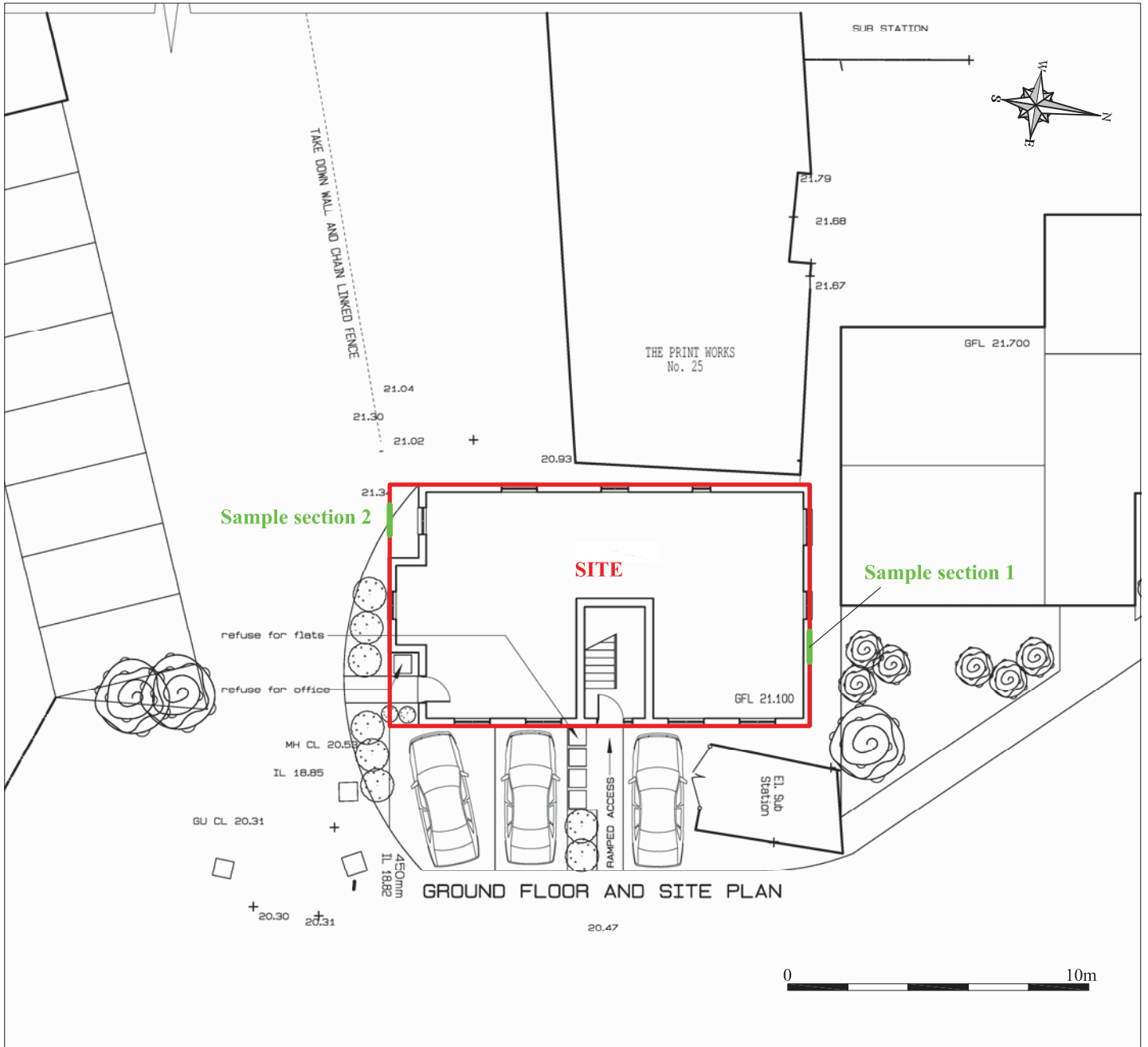
Reproduced from the 1999 Ordnance Survey 1:25000 map with the permission of Her Majesty's Stationery Office. © Crown copyright Archaeological Solutions Ltd Licence number 100036680

Archaeological Solutions Ltd
Fig. 1 Site location plan
 Scale 1:25,000 at A4
 Tapster St, Barnet, London (P5807)



Reproduced from the Ordnance Survey 1:1250 map with the permission of Her Majesty's Stationery Office. © Crown copyright Archaeological Solutions Ltd Licence number 100036680.

Archaeological Solutions Ltd
Fig. 2 Detailed site location plan
 Scale 1:750 at A4
 Tapster St, Barnet, London (P5807)



Archaeological Solutions Ltd
Fig. 3 Plan and sections
 Scale 1:200 and 1:20 at A4
 Tapster St, Barnet, London (P5807)