
ARCHAEOLOGICAL SOLUTIONS LTD

**PARSONAGE FARM, PARSONAGE FARM LANE,
GREAT SAMPFORD, ESSEX CB10 2RR**

**ARCHAEOLOGICAL MONITORING, RECORDING &
POTENTIAL EXCAVATION**

Authors: Mark Blagg-Newsome (Fieldwork & report) Lauren Wilson (Background Research)	
NGR: TL 65213 36308	Report No: 5105
District: Uttlesford	Site Code: GSPF16
Approved: Claire Halpin MCIfA	Project No: 6474
Signed:	Date: 31 May 2016

This report is confidential to the client. Archaeological Solutions Ltd accepts no responsibility or liability to any third party to whom this report, or any part of it, is made known. Any such party relies upon this report entirely at their own risk. No part of this report may be reproduced by any means without permission.

Archaeological Solutions is an independent archaeological contractor providing the services which satisfy all archaeological requirements of planning applications, including:

Desk-based assessments and environmental impact assessments
Historic building recording and appraisals
Trial trench evaluations
Geophysical surveys
Archaeological monitoring and recording
Archaeological excavations
Post excavation analysis
Promotion and outreach
Specialist analysis

ARCHAEOLOGICAL SOLUTIONS LTD

**Unit 6, Brunel Business Court, Eastern Way,
Bury St Edmunds IP32 7AJ
Tel 01284 765210**

**P I House, Rear of 23 Clifton Road, Shefford,
Bedfordshire, SG17 5AF
Tel: 01462 850483**

**e-mail info@ascontracts.co.uk
www.archaeologicalsolutions.co.uk**



twitter.com/ArchaeologicalS



www.facebook.com/ArchaeologicalSolutions



CONTENTS

OASIS SUMMARY

SUMMARY

- 1 INTRODUCTION**
 - 2 DESCRIPTION OF THE SITE**
 - 3 ARCHAEOLOGICAL & HISTORICAL BACKGROUND**
 - 4 METHODOLOGY**
 - 5 DESCRIPTION OF RESULTS**
 - 6 CONFIDENCE RATING**
 - 7 DISCUSSION**
 - 8 DEPOSITION OF THE ARCHIVE**
- ACKNOWLEDGEMENTS**
BIBLIOGRAPHY
WEB SITES

OASIS SUMMARY SHEET

Project details			
Project name	<i>Parsonage Farm, Parsonage Farm Lane, Great Sampford, Essex CB10 2RR</i>		
<p><i>In April 2016 Archaeological Solutions Ltd (AS) carried out a programme of archaeological monitoring and recording during groundworks at Parsonage Farm, Parsonage Lane, Great Sampford, Essex CB10 2RR (NGR TL 65213 36308). The monitoring was carried out in compliance with a planning condition attached to planning approval the construction of a swimming pool and timber building for a games room (Uttlesford DC Approval Ref. UTT/14/0777/FUL). The monitoring was required based on the advice of the Historic Environment Advisor of Essex County Council (HEA ECC).</i></p> <p><i>The historic farm complex at Parsonage Farm is recorded on the Essex Historic Environment Record (EHER 1530-31), and lies within a potentially moated enclosure marked by a series of waterfilled ponds and ditches. Similar sites in the district are medieval, with 12th-13th century origins. The site includes the Grade II listed farmhouse of 18th-19th century date (EHER 1531 and a large Essex barn (EHER 19622). The site therefore had a potential for remains associated with the medieval and post-medieval moated farm complex.</i></p> <p><i>The monitoring recorded a modern cut and an undated pit, F1010.</i></p>			
Project dates (fieldwork)	<i>13, 19, 26 April 2016</i>		
Previous work (Y/N/?)	<i>N</i>	<i>Future work</i>	<i>N</i>
P. number	<i>6474</i>	<i>Site code</i>	<i>GSPF16</i>
Type of project	<i>Archaeological Monitoring & Recording</i>		
Site status			
Current land use	<i>Residential</i>		
Planned development	<i>Swimming pool and games room</i>		
Main features (+dates)			
Significant finds (+dates)			
Project location			
County/ District/ Parish	<i>Essex</i>	<i>Uttlesford</i>	<i>Great Sampford</i>
HER/ SMR for area	<i>Essex Historic Environment Record</i>		
Post code (if known)	<i>CB10 2RR</i>		
Area of site	<i>-</i>		
NGR	<i>TL 65213 36308</i>		
Height AOD (min/max)	<i>c. 105m AOD</i>		
Project creators			
Brief issued by	<i>Essex County Council</i>		
Project supervisor/s (PO)	<i>M Blagg-Newsome</i>		
Funded by	<i>Mr Keith Simmons</i>		
Full title	<i>Parsonage Farm, Parsonage Farm Lane, Great Sampford, Essex CB10 2RR. Archaeological Monitoring & Recording</i>		
Authors	<i>Blagg-Newsome, M.</i>		
Report no.	<i>5105</i>		
Date (of report)	<i>May 2016</i>		

PARSONAGE FARM, PARSONAGE FARM LANE, GREAT SAMPFORD, ESSEX CB10 2RR

ARCHAEOLOGICAL MONITORING, RECORDING & POTENTIAL EXCAVATION

SUMMARY

In April 2016 Archaeological Solutions Ltd (AS) carried out a programme of archaeological monitoring and recording during groundworks at Parsonage Farm, Parsonage Lane, Great Sampford, Essex CB10 2RR (NGR TL 65213 36308). The monitoring was carried out in compliance with a planning condition attached to planning approval the construction of a swimming pool and timber building for a games room (Uttlesford DC Approval Ref. UTT/14/0777/FUL). The monitoring was required based on the advice of the Historic Environment Advisor of Essex County Council (HEA ECC).

The historic farm complex at Parsonage Farm is recorded on the Essex Historic Environment Record (EHER 1530-31), and lies within a potentially moated enclosure marked by a series of waterfilled ponds and ditches. Similar sites in the district are medieval, with 12th-13th century origins. The site includes the Grade II listed farmhouse of 18th-19th century date (EHER 1531 and a large Essex barn (EHER 19622). The site therefore had a potential for remains associated with the medieval and post-medieval moated farm complex.

The monitoring recorded a modern cut and an undated pit, F1010.

1 INTRODUCTION

1.1 In April 2016 Archaeological Solutions Ltd (AS) carried out a programme of archaeological monitoring and recording during groundworks at Parsonage Farm, Parsonage Lane, Great Sampford, Essex CB10 2RR (NGR TL 65213 36308; Figs 1 - 2). The monitoring was carried out in compliance with a planning condition attached to planning approval the construction of a swimming pool and timber building for a games room (Uttlesford DC Approval Ref. UTT/14/0777/FUL). The monitoring was required based on the advice of the Historic Environment Advisor of Essex County Council (HEA ECC).

1.2 The archaeological monitoring was carried out in accordance with a brief issued by the Historic Environment Advisor of Essex County Council (ECC HEA; *Parsonage Farm, Parsonage Lane, Great Sampford*, dated 21/10/2015), and a specification compiled by AS (dated 21/10/2015), and approved by ECC HEA/HE. The monitoring adhered to the Chartered Institute for Archaeologists' *Standard and Guidance for Watching Briefs* (2014) and *Standards for Field Archaeology in the East of England* (Gurney 2003).

1.3 The project aimed to:

- Ensure the archaeological excavation and monitoring of all aspects of the development programme likely to affect buried archaeological remains;
- Secure the adequate recording of any archaeological remains revealed by the development programme;
- Secure the full analysis and interpretation of the site archive and the appropriate publication of the project results, if required;
- Secure the analysis, long-term conservation and storage of the project archive

Planning Policy Context

1.4 The National Planning Policy Framework (NPPF 2012) states that those parts of the historic environment that have significance because of their historic, archaeological, architectural or artistic interest are heritage assets. The NPPF aims to deliver sustainable development by ensuring that policies and decisions that concern the historic environment recognise that heritage assets are a non-renewable resource, take account of the wider social, cultural, economic and environmental benefits of heritage conservation, and recognise that intelligently managed change may sometimes be necessary if heritage assets are to be maintained for the long term. The NPPF requires applications to describe the significance of any heritage asset, including its setting that may be affected in proportion to the asset's importance and the potential impact of the proposal.

1.5 The NPPF aims to conserve England's heritage assets in a manner appropriate to their significance, with substantial harm to designated heritage assets (i.e. listed buildings, scheduled monuments) only permitted in exceptional circumstances when the public benefit of a proposal outweighs the conservation of the asset. The effect of proposals on non-designated heritage assets must be balanced against the scale of loss and significance of the asset, but non-designated heritage assets of demonstrably equivalent significance may be considered subject to the same policies as those that are designated. The NPPF states that opportunities to capture evidence from the historic environment, to record and advance the understanding of heritage assets and to make this publicly available is a requirement of development management. This opportunity should be taken in a manner proportionate to the significance of a heritage asset and to impact of the proposal, particularly where a heritage asset is to be lost.

2 DESCRIPTION OF THE SITE

2.1 The site lies at Parsonage Farm, within a historic farm complex off Parsonage Farm Lane in a rural location at Great Sampford. The site lies within a moated complex. It is proposed to demolish existing outbuildings and build a new swimming pool and a games/garden room at the property.

2.2 The site lies in an area of Lewes Nodular Chalk Formation and Seaford Chalk Formation with overlying soils of lime-rich, loamy and clayey consistency with impeded drainage. The site lies in an area of higher ground at c.105m AOD with land sloping steadily down to the south-west towards Great Sampford. The River Pant runs from the north-west to the south-east c.1.5km on the opposite side of the village.

3 ARCHAEOLOGICAL AND HISTORICAL BACKGROUND

3.1 Prehistoric finds are limited to Iron Age metal objects and pottery found during metal-detecting c.1km to the west (EHER 14955). Roman features are also uncommon but the archaeological record does include a villa site c.1.3km to the north-west (EHER 14956), and a road running through Great Sampford c.1.2km to the south-west (EHER 7336).

3.2 The historic farm complex at Parsonage Farm lies within a potential moated enclosure demarcated by a series of water filled ponds and ditches (EHER 1530). Another moat is located c.750m to the south of the site (EHER 1466), and a third c.670m to the north at Calthorpes Farm (EHER 1532).

3.3 The site includes a Grade II listed farmhouse of 17th century or later date (EHER 1531) and a large c.1450 timber-framed aisled barn (EHER 19622). Similar sites in the district are medieval, with 12th-13th century origins (EHER 14960 & 14961). Several farms to the north-west have 18th or 19th century origins (EHER 36021, 36022 & 36023).

4 METHODOLOGY

4.1 The monitoring encompassed the ground reduction and excavation of foundation trenches for the garden house and pool (Fig.3).

4.2 Exposed sections were cleaned by hand and examined for archaeological features. Deposits were recorded using pro forma recording sheets, drawn to scale and photographed as appropriate. Excavated spoil was searched for archaeological finds.

5 DESCRIPTION OF RESULTS

Sample sections of the stratigraphy encountered were recorded:

<i>Sample Section 1A</i> <i>0.00 = 103.79m AOD</i>		
0.00 – 0.29m	L1000	Topsoil. Firm, dark grey brown silt clay with moderate small sub-rounded chalk.
0.29 – 1.08m	L1001	Subsoil. Firm, mid grey brown silt clay with moderate small and medium sized sub-rounded chalk.
1.08m+	L1002	Natural deposits. Compact, light grey yellow clay with frequent varying sized chalk deposits.

<i>Sample Section 1B</i> <i>0.00 = 103.67m AOD</i>		
0.00 – 0.03m	L1004	Upper fill of F1003. Friable, mid yellow orange gravel.
0.03 – 0.54m	L1005	Fill of F1003. Compact, mid grey brown silt clay with occasional small round chalk lumps.
0.54 – 0.76m	L1006	Fill of F1003. Firm, mid brown yellow silt clay with frequent small and medium sized chalk lumps.
0.76 – 1.00m	L1007	Fill of F1003. Firm, dark grey brown silty clay.
1.00 – 1.21m	L1008	Fill of F1003. Firm, light grey brown clay.
1.21 – 1.55m	L1009	Basal fill of F1003. Firm, mid grey brown clay.
1.55m+	L1002	Natural deposits. As above.

<i>Sample Section 1C</i> <i>0.00 = 103.83m AOD</i>		
0.00 – 0.25m	L1000	Topsoil. As above.
0.25 – 1.02m	L1001	Subsoil. As above.
1.02m+	L1002	Natural deposits. As above.

<i>Sample Section 2A</i> <i>0.00 = 103.93 AOD</i>		
0.00 – 0.35m	L1000	Topsoil. As above.
0.35m+	L1002	Natural deposits. As above.

<i>Sample Section 3A</i> <i>0.00 = 103.07m AOD</i>		
0.00 – 0.23m	L1013	Topsoil. Firm, mid grey brown silt clay with frequent small and medium sized flint and chalk.
0.23 – 0.29m	L1014	Topsoil. Friable, dark grey brown silt sand.
0.29 – 0.62m	L1016	Subsoil. Compact, mid grey brown silt clay with moderate varying sized chalk lumps.
0.62 – 0.69m	L1015	Iron Panning. Compact, dark orange iron panning.
0.69 – 0.1.10m	L1016	Subsoil. As above
1.10m+	L1019	Natural Deposits. Compact, dark brown clay with occasional small chalk lumps.

<i>Sample Section 3B</i> <i>0.00 = 103.25m AOD</i>		
0.00 – 0.32m	L1014	Topsoil. As above.
0.32 – 1.31m	L1017	Natural deposits. Compact, light yellow brown silt clay with frequent chalk inclusions
1.31m+	L1018	Natural Deposits. Compact, light grey blue chalky clay.

<i>Sample Section 3C</i> <i>0.00 = 103.45m AOD</i>		
0.00 – 0.18m	L1014	Topsoil. As above.
0.18m+	L1017	Natural deposits. As above.

<i>Sample Section 3D</i> <i>0.00 = 103.19m AOD</i>		
0.00 – 0.20m	L1013	Topsoil. As above.
0.20 – 0.38m	L1014	Topsoil. As above.
0.38 – 1.02m	L1016	Subsoil. As above
1.02 – 1.16m	L1019	Natural deposits. As above.
1.16m+	L1017	Natural deposits. As above.

Description: Two features were present in the area of the proposed garden house: undated Pit F1010 and F1003, a modern cut created during demolition of a shed.

Cut F1003 was rectangular in plan with moderately sloping sides and a concave base. Its basal fill, L1009 was a firm, mid grey brown clay; thereafter L1008 was a firm, light grey brown clay. L1007 was a firm, dark grey brown silt clay. L1006 was a firm, mid brown yellow silt clay with frequent small and medium sized chalk lumps. L1005 was a compact, mid grey brown silt clay with occasional small round chalk lumps. Uppermost L1004 was a friable, mid yellow orange gravel. CBM (15g) was recovered from L1007.

Pit F1010 was sub-circular in plan (0.40+ x 0.80+ x 0.24m). It had gently sloping sides and its base was unseen. Its fill, L1011, was a firm, dark grey brown silt clay. It contained fired clay (5g).

7 CONFIDENCE RATING

7.1 Within the parameters of monitoring during groundworks it is not felt that any factors inhibited the recognition of archaeological features or finds.

8 DISCUSSION

8.1 The historic farm complex at Parsonage Farm is recorded on the Essex Historic Environment Record (EHER 1530-31), and lies within a potentially moated enclosure marked by a series of waterfilled ponds and ditches. Similar sites in the district are medieval, with 12th-13th century origins. The site includes the Grade II listed farmhouse of 18th-19th century date (EHER 1531 and a large Essex barn (EHER 19622). The site therefore had a potential for remains associated with the medieval and post-medieval moated farm complex.

8.2 The monitoring recorded a modern cut and an undated pit, F1010.

9 DEPOSITION OF THE ARCHIVE

10.1 The requirements for archive storage will be agreed with Saffon Walden Museum, and the archive deposited there within three months of the conclusion of fieldwork.

ACKNOWLEDGEMENTS

Archaeological Solutions Limited would like to thank Mr Keith Simmons for funding the monitoring and Mr Neil Cook of New World Architectural for assistance.

AS would also like to acknowledge the input and advice of Mr Richard Havis, Historic Environment Officer of Essex County Council.

BIBLIOGRAPHY

British Geological Survey (BGS), 1978, *Legend for the 1:625,000 Geological map of the United Kingdom (solid geology)*: London. Mansfield

Gurney, D., 2003, *Standards for Field Archaeology in the East of England*. East Anglian Archaeology Occasional Papers 14/ALGAO

Chartered Institute for Archaeologists, 2014, *Standard and Guidance for An Archaeological Watching Brief*. ClfA Reading.

Soil Survey of England and Wales (SSEW), 1983, *Legend for the 1:250,000 Soil Map of England and Wales*. SSEW, Harpenden

WEB SITE

Heritage Gateway

APPENDIX 1 CONCORDANCE OF FINDS

Concordance of Finds

GSPF16, P6474 - Parsonage Farm, Great Sampford, Essex

Feature	Context	Segment	Trench	Description	Spot Date (Pot Only)	Pot Qty	Pottery (g)	CBM (g)	A. Bone (g)	Other Material	Other Qty	Other (g)
	1000			Topsoil	19th-early 20th	1	6g	2909g	5g	Glass	3	450g
	1001			Subsoil				476g				
1003	1007			Modern Cut				15g				
1010	1011			Fill of Pit						Fired Clay		5g
	1013			Topsoil				228g	8g	Glass Fe.Frag	4 1	57g 93g
				Unstratified	19th-Mid 20th	1	18g			Shell	1	20g

APPENDIX 2 SPECIALIST REPORTS

The Post-medieval Pottery

Peter Thompson

The archaeological evaluation recovered two unstratified early modern to modern sherds.

Methodology

The pottery was examined in keeping with the Medieval Pottery Research Group Guidelines (Slowikowski et al 2001 & MPRG 1998).

KEY:

ENPO: English porcelain mid 18th+

LGRE: Late Glazed red earthenware late 18th+

Feature	Context	Quantity	Date	Comment
Spoil	1000	1x8g ENPO	19 th -early 20 th	Fragment of dish body/base angle
Pit 1010	1011			1x5g daub/fired clay
Unstrat		1x18 LGRE	19 th - mid 20 th	White slip

Table 1: Quantification of sherds by context

Bibliography

Slowikowski, A., Nenck, B. and Pearce, J., 2001 Minimum Standards for the Processing, Recording, Analysis and Publication of Post-Roman Ceramics, *Medieval Pottery Research Group Occasional Paper 2*.

PHOTOGRAPHIC INDEX



1
View of garden house footings looking north-west



2
F1010 looking south-west



3
Sample Section 1a looking south-west



4
Sample Section 2A looking north-east



5
View of pool footings looking north



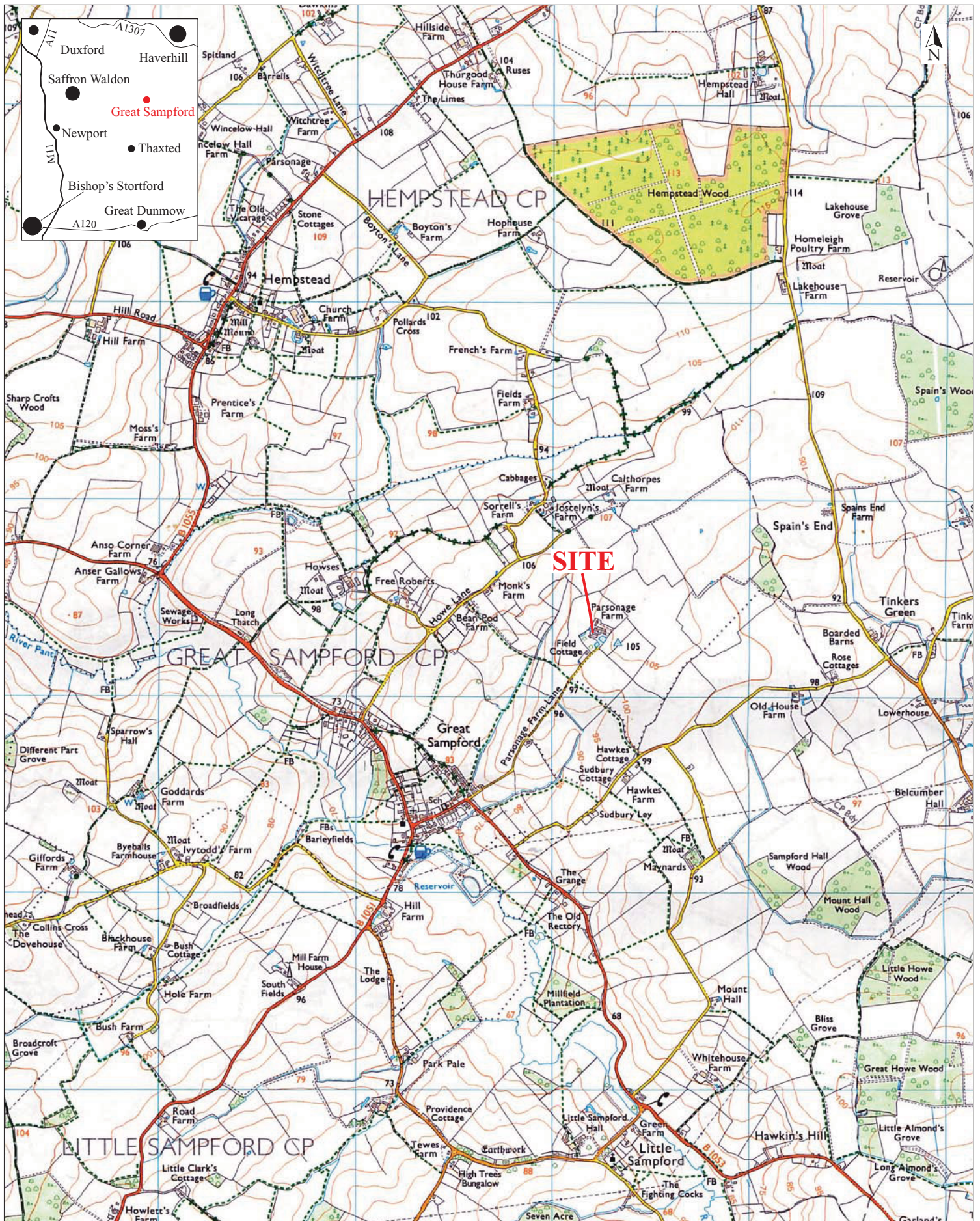
6
Sample Section 3A looking south-west



7
Sample Section 3B looking south-east

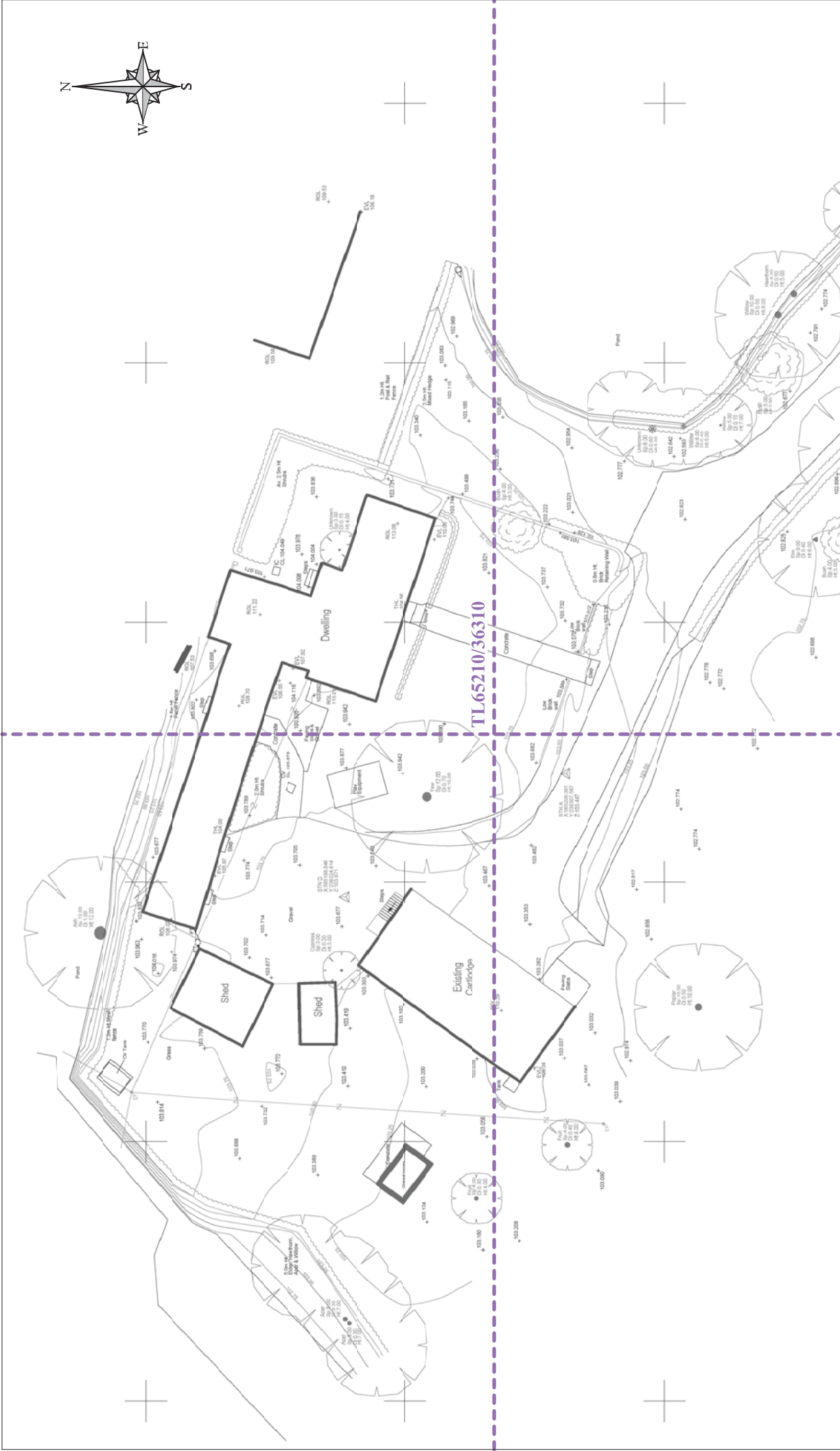


8
Sample Section 3C looking south-east



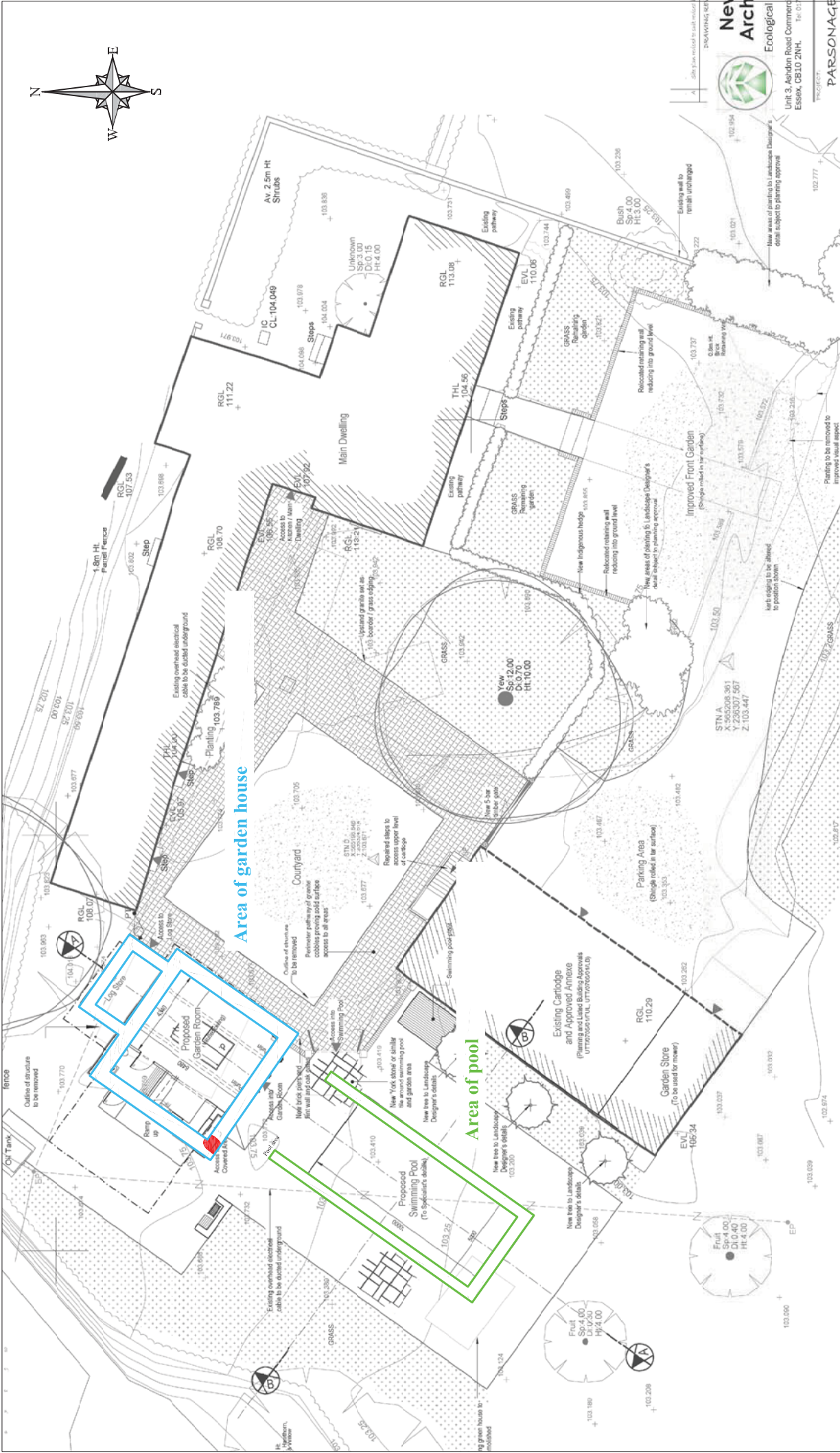
Reproduced from the 1999 Ordnance Survey 1:25000 map with the permission of Her Majesty's Stationery Office. © Crown copyright Archaeological Solutions Ltd Licence number 100036680

Archaeological Solutions Ltd
Fig. 1 Site location plan
 Scale 1:25,000 at A4
 Parsonage Farm, Sampford, Essex (P6474)



Archaeological Solutions Ltd
Fig. 2 Detailed site location plan
 Scale 1:400 at A4
 Parsonage Farm, Sampford, Essex (P6474)

0 25m



Archaeological Solutions Ltd
Fig. 3 Proposed development plan
 Scale 1:250 at A4
 Parsonage Farm, Sampford, Essex (P6474)

