

---

**ARCHAEOLOGICAL SOLUTIONS LTD**

**MYMWOOD HOUSE, SHEPHERDS WAY, BROOKMANS PARK  
HATFIELD, HERTFORDSHIRE**

**GROUNDWORKS FOR SINGLE STOREY EXTENSION**

**ARCHAEOLOGICAL MONITORING & RECORDING**

Author: Lisa Smith BA (fieldwork and text)	
NGR: TL 26440 03834	Report No: 3182
District: Welwyn Hatfield	Site Code: AS 1139
Approved: Claire Halpin	Project No: 3111
Signed:	Date: October 2008

*This report is confidential to the client. Archaeological Solutions Ltd accepts no responsibility or liability to any third party to whom this report, or any part of it, is made known. Any such party relies upon this report entirely at their own risk. No part of this report may be reproduced by any means without permission.*

---

Archaeological Solutions Ltd, 98-100 Fore Street, Hertford, SG14 1AB  
Tel: 01992 558170 Fax: 01992 553359 E-mail: [info@ascontracts.co.uk](mailto:info@ascontracts.co.uk)  
[www.archaeologicalsolutions.co.uk](http://www.archaeologicalsolutions.co.uk)  
Registered Number: 4702122

## **CONTENTS**

### **OASIS SUMMARY**

#### ***SUMMARY***

- 1 INTRODUCTION**
- 2 DESCRIPTION OF SITE**
- 3 TOPOGRAPHY, GEOLOGY & SOILS**
- 4 ARCHAEOLOGICAL AND HISTORICAL BACKGROUND**
- 5 METHOD OF WORK**
- 6 DESCRIPTION OF RESULTS**
- 7 CONFIDENCE RATING**
- 8 DEPOSIT MODEL**
- 9 DISCUSSION**

#### **DEPOSITION OF THE ARCHIVE**

#### **ACKNOWLEDGEMENTS**

#### **BIBLIOGRAPHY**

#### **APPENDIX 1: CARTOGRAPHIC SOURCES**

#### **APPENDIX 2: BUILDING LISTING**

#### **APPENDIX 3: HER SUMMARY SHEET**

## OASIS SUMMARY

<b>Project details</b>			
Project name	<i>Mymwood House, Shepherds Way, Brookmans Park, Hatfield, Hertfordshire: Archaeological monitoring and Recording</i>		
Project description (250 words)			
<i>In May 2008, Archaeological Solutions Ltd (AS) undertook archaeological monitoring and recording at Mymwood House, Shepherds Way, Brookmans Park, Hatfield, Hertfordshire (TL 26440 03834). The monitoring was undertaken in advance of the erection of a single storey extension to the rear of the property, which is currently as care home.. A modern gravel path and services associated with the house were found. No archaeological features or finds were revealed.</i>			
Project dates (fieldwork)	<i>20<sup>th</sup> - 22<sup>nd</sup> May 2008</i>		
Previous work (Y/N/?)	<i>N</i>	Future work (Y/N/?)	<i>?</i>
P. number	<i>P 3111</i>	Site code	<i>AS 1139</i>
Type of project	<i>Archaeological monitoring and recording</i>		
Site status	<i>Grade II listed building</i>		
Current land use	<i>Lawn garden</i>		
Planned development	<i>Erection of single storey extension</i>		
Main features (+dates)	<i>Modern gravel path</i>		
Significant finds (+dates)	<i>-</i>		
<b>Project location</b>			
County/ District/ Parish	<i>Hertfordshire</i>	<i>Welwyn Hatfield</i>	<i>North Mymms</i>
HER/ SMR for area	<i>Hertfordshire</i>		
Post code (if known)	<i>AL9 6NN</i>		
Area of site	<i>14,187m<sup>2</sup></i>		
NGR	<i>TL 26440 03834</i>		
Height AOD	<i>c.120mAOD</i>		
<b>Project creators</b>			
Brief issued by	<i>Hertfordshire County Council HEU</i>		
Project Officer (P/O)	<i>L. Smith</i>		
Funded by	<i>Relmfield Builders Ltd</i>		
Full title	<i>Mymwood House, Shepherds Way, Brookmans Park North Mymms, Hertfordshire: Archaeological monitoring and Recording</i>		
Author	<i>Smith, L.</i>		
Report no.	<i>3182</i>		
Date (of report)	<i>October 2008</i>		

## **MYMWOOD HOUSE, SHEPHERDS WAY, BROOKMANS PARK HATFIELD, HERTFORDSHIRE**

### **GROUNDWORKS FOR SINGLE STOREY EXTENSION**

### **ARCHAEOLOGICAL MONITORING & RECORDING**

#### **SUMMARY**

*In May 2008, Archaeological Solutions Ltd (AS) undertook archaeological monitoring and recording of groundworks on land at Mymwood House, Shepherds Way, Brookmans Park, Hatfield, Hertfordshire (TL 26440 03834). The monitoring was undertaken in advance of the erection of a single storey extension to the rear of the property.*

*The programme of monitoring and recording was undertaken to the north-east of Mymwood House care home. A modern gravel path and services associated with the house were found. No archaeological features or finds were revealed*

#### **1 INTRODUCTION**

1.1 In May 2008, Archaeological Solutions Limited (AS) conducted archaeological monitoring and recording of groundworks on land at Mymwood House, Shepherds Way, Brookmans Park, Hatfield, Hertfordshire (NGR TL 26440 03834) (Figs. 1-2; DP 1). The monitoring was commissioned by Relmfield Builders Ltd prior to the proposed erection of a new single storey extension to the rear of Mymwood House care home (Welwyn Hatfield District Council Planning ref. 6/07/1704).

1.2 The monitoring was conducted in accordance with a brief issued by Hertfordshire County Council Historic Environment Unit (HCC HEU) (A. Instone), and a specification prepared by Archaeological Solutions (both dated 18<sup>th</sup> March 2008). The project followed the procedures outlined in both the Institute of Field Archaeologists' (IFA) *Code of Conduct* (revised 2001), and the IFA *Standard and Guidance for Archaeological Watching Briefs* (revised 2001). It also adhered to the *Standards for Field Archaeology in the East of England* (Gurney 2003).

1.3 The objectives of the project were to:

- Ensure the archaeological excavation and monitoring of all aspects of the development programme likely to affect buried archaeological remains;
- Secure the adequate recording of any archaeological remains revealed by the development programme;
- Secure the analysis and interpretation of the site archive and the appropriate publication of the project results, if required;
- Secure the analysis, long-term conservation and storage of the project archive



## **Planning policy context**

1.4 The relevant planning policies which apply to the effect of development with regard to cultural heritage are Planning Policy Guidance Note 15 'Planning and the Historic Environment' (PPG15) and Planning Policy Guidance Note 16 'Archaeology and Planning' (PPG16) (Department of the Environment).

1.5 PPG16 (1990) is the national Planning Policy Guidance Note which applies to archaeology. It states that there should always be a presumption in favour of preserving nationally important archaeological remains in situ. However, when there is no overriding case for preservation, developers are required to fund opportunities for the recording and, where necessary, the excavation of the site. This condition is widely applied by local authorities.

1.6 PPG15 (1994) is the national Planning Policy Guidance Note which applies to the conservation of the historic environment by protecting the character and appearance of Conservation Areas and protecting listed buildings (of architectural or historical interest) from demolition and unsympathetic change and safeguarding their settings as far as is possible. This condition is also widely applied by local authorities.

## **2 DESCRIPTION OF SITE**

2.1 The site lies at Mymwood House in Brookmans Park, in the parish of North Mymms. The house is on the edge of the village, a short distance to the north of Shepherds Way, the B157 which runs from Brookmans Park south-east to Northaw and Cuffley (Figs. 1- 2). To the north is open farmland while to the east and south the substantial wooded areas of Great Wood and Well Wood are a short distance away.

## **3 TOPOGRAPHY, GEOLOGY & SOILS**

3.1 The site lies at a height of *c.* 120m AOD. Land to the west drops away rapidly in the direction of Brookmans Park, while to the east it remains relatively flat before falling away again after a distance of *c.* 1kmin the vicinity of Well Wood and Great Wood Country Park

3.2 The site lies close to the junction of the Eocene Reading Beds and the London Clay which underlies much of the London Basin. Soils of the area are of the Windsor Association, which overlie Tertiary Clay, and the Essendon Association, which overlie plateau and river terrace drift. Windsor Association soils are described as slowly permeable seasonally waterlogged clayey soils mostly with brown subsoils and some fine loamy over clayey and fine silty over clayey soils. Essendon soils are slowly permeable seasonally waterlogged coarse loamy over clayey soils (SSEW 1983)

## 4 ARCHAEOLOGICAL & HISTORICAL BACKGROUND

4.1 The house is a large Grade II listed painted stucco structure with slate roofs, of a square plan with the 2-storey parts forming an H-shape, with a central conservatory. It dates to around 1820 (DP 1). It was converted into a school in 1932, and incorporates a 17<sup>th</sup> century timber-framed bay at the north-eastern corner. The adjacent Mymwood Lodge of c. 1840 is also listed.

4.2 Although not labelled, Mymwood House is clearly visible on the Tithe Map for the parish of North Mymms (Fig. 3: undated, probably mid-1840s). While a number of ancillary buildings are visible to the east of the house the rest of the surrounding land appears to be open farmland. This is confirmed by the accompanying Tithe Award of 1844 which describes the plot which includes the house as the “Front Meadow”. Both this and the “Mansion House Coach house Gardens” are listed as under the ownership and occupation of William John Lysley.

4.3 Mymwood House reappears as “Mimwood House” in the second edition Ordnance Survey map of 1898 (Fig. 4). The outlines of the main house and outbuildings appear little changed. Although the area in front of the house had been planted with deciduous trees there does not seem to have been any more formal planting or the laying out of any large-scale gardens. The Ordnance Survey map of 1935 again shows little change, although the recent tree planting in front of the house had been removed.

## 5 METHOD OF WORK

5.1 An area measuring approximately 1,261.4m<sup>2</sup> located to the rear of Mymwood house was reduced to the natural substrate (DP 2). This area encompassed the proposed extension footprint and associated services.

5.2 Undifferentiated overburden was removed under close archaeological monitoring using a 360° mechanical excavator. Thereafter, all further investigation was undertaken by hand. Exposed surfaces were cleaned as appropriate and examined for archaeological features and finds. Deposits were recorded using *pro-forma* recording sheets, drawn to scale and photographed. Site visits to monitor the groundworks were undertaken between the 20<sup>th</sup> and 22<sup>nd</sup> May 2008.

## 6 DESCRIPTION OF RESULTS

### 6.1 Description of Deposits: Sample Section 1.

0.00 – 0.30m	L1000. Topsoil. Mid greyish brown sandy loam with moderate fragments of ceramic building material (CBM) and frequent rounded pebbles throughout.
0.30 – 0.52m	L1003. Gravel layer. Light grey silty sand with very frequent angular gravel and very frequent medium and small sized rounded pebbles.

0.52 – 0.80m	L1004. Gravel layer. Light yellowish brown silty sand with very frequent angular gravel and very frequent medium and small rounded pebbles
0.80 – 0.96m+	L1001. Sandy clay natural drift. Mid orangish brown and light greyish blue sandy clay with occasional angular gravel and occasional medium rounded pebbles.

*Description: A gravel path (L1002) and a brick manhole (F1005) were present in this area.*

6.1.1 Gravel Path L1002 was aligned NE /SW and visible across the excavated area after the removal of topsoil (Fig. 6; DP 3). It consisted of light greyish white sand with moderate medium-sized sub angular flint and frequent rounded pebbles. It was roughly laid and is probably a temporary path dating to the modern use of the house.

6.1.2 Brick Manhole F1005 (length 2.0m, width 1.5m, depth 10.0m), was encountered beneath the topsoil to the north-east of the house (Fig. 6; DP 4). Its brick make-up (M1006) was well constructed, circular in plan with a bell shaped top which was capped with a concrete slab.

## 6.2 Description of Deposits: Sample Section 2.

0.00 – 0.15m	L1000. Topsoil. As above sample section 1.
0.15m+	L1001. Sandy clay natural. As above sample section 1.

## 7 CONFIDENCE RATING

7.1 It is not felt that any factors inhibited the recognition of archaeological features during the monitoring of groundworks for the rear extension.

## 8 DEPOSIT MODEL

8.1 The topsoil (L1000) was a mid greyish brown silty loam with moderate fragments of CBM and frequent rounded pebbles. It was seen as a consistent layer across the entire area to a depth of 0.30m. It sealed all features and evidence of modern intrusion.

8.2 Two gravel layers were identified in eastern areas of the site. The first (L1003) was a light grey silty sand with very frequent angular gravel and very frequent medium and small sized rounded pebbles. It was seen between 0.30m and 0.52m in depth. The second (L1004) was a light yellowish brown silty sand with very frequent angular gravel and very frequent medium and small rounded pebbles. L1004 was identified at a depth of 0.52m and 0.80m. Both deposits seem to have been used as make –up deposits to raise the ground level in this area of the site.

8.3 The natural substrate, L1001, was a mid orange/brown and light greyish blue sandy clay with occasional angular gravel and occasional medium rounded pebbles. In western areas of the site the natural was seen at a depth of 0.15m. In eastern areas of

the site the natural was seen at an increased depth of 0.80m due to a substantial amount of made ground.

## **9 DISCUSSION**

9.1 The investigations at Mymwood Park identified a likely modern gravel path (L1002) and a brick manhole (F1005) relating to the drainage system of the house.

9.2 It is evident that all previous garden landscaping associated with Mymwood House had been removed during previous phases of modern levelling and service intrusion.

9.3 No evidence of previous phases of occupation of the site, either associated with the 17<sup>th</sup> century element of the building identified by the Grade II listing description, or with any earlier, potentially medieval occupation of the site, were identified, despite observation of a large area strip to the rear of the property.

## **DEPOSITION OF THE ARCHIVE**

Archive records, with an inventory, will be quantified, ordered, indexed, cross-referenced and checked for internal consistency.

The Archaeological Finds Officer will arrange for the long term deposition of the site archive (with Mill Green Museum, Hatfield). Prior to the commencement of the fieldwork the museum was informed of the project in accordance with the *Guidelines for the Deposition of Archives in Hertfordshire* (April 2000).

## **ACKNOWLEDGEMENTS**

AS is grateful to Relmfield Builders Ltd for funding the project and for their assistance (in particular Ms Sally Saville and Mr Ray Bradley).

AS would also like to acknowledge the advice and input of Mr Andy Instone of Hertfordshire CC Historic Environment Unit

## **BIBLIOGRAPHY**

Gurney, D. 2003 *Standards for Field Archaeology in the East of England*. East Anglian Archaeology Occasional Paper 14

Institute of Field Archaeologists, 1994 (revised 2001), *Standard and Guidance for Archaeological Watching Briefs*. IFA

Wilcox S 2004 *Mymwood House, North Mymms, Herts: an historical assessment*. Unpublished desk-based assessment held at Hertfordshire HER

## Websites

[www.heritagegateway.org.uk](http://www.heritagegateway.org.uk) on 5<sup>th</sup> of November 2008

[www.imagesofengland.co.uk](http://www.imagesofengland.co.uk) the English Heritage online directory of listed buildings on 5<sup>th</sup> November 2008

## APPENDIX 1 CARTOGRAPHIC SOURCES

Date	Description	Scale	Location	Reference
None	North Mymms Tithe Map	-	HALS	DSA4/69/2
1844	North Mymms Tithe Award	-	HALS	DSA4/69/1
1898	Second Edition Ordnance Survey Map	25":1 mile	HALS	Sheet XL.4
1935	OS Map	25":1 mile	HALS	Sheet XL.4
1998	OS Explorer Series Map	1:25000	AS	Sheet 182

## APPENDIX 2 BUILDING LISTING

IoE Number: 158530

Location: MYMWOOD SCHOOL, SHEPHERDS' WAY (north side)

NORTH MYMMS, WELWYN HATFIELD, HERTFORDSHIRE

Photographer: N/A

Date Photographed: N/A

Date listed: 26 October 1983

Date of last amendment: 09 December 1983

Grade II

Brookmans Park TL 20 SENORTH MYMMS SHEPHERD'S WAY (north side)  
12/266 Mymwood School

Brookmans Park TL 20 SE NORTH MYMMS SHEPHERD'S WAY (north side)  
12/266 Mymwood School, formerly Mimmwood 26.10.83 - II House. Circa 1820, converted to school 1932. C17 timber frame bay at NE corner. Alterations c.1840 and C20. Painted stucco. Slate roofs. Square plan, the 2-storey parts forming H shape. Entrance elevation is 1:4:1 windows, the left and right projections with bracketed eaves. Recessed sash windows. Central conservatory with 3 windows and modillioned porch on left. 7-window W elevation of c.1840 continues bracketed cornice band. Ground and 1st floor windows with moulded frames, central one pedimented. Interior has square entrance hall with mutule cornice and circular field with bay leaf surround. The N side has passage marked by side Doric columns. Most doorcases of ground and 1st floors intact. Rear central cast iron staircase with palmette features.

### APPENDIX 3

### HER SUMMARY SHEET

<b>Site name and address:</b>	Mymwood House, Shepherds Way, Brookmans Park, Hatfield
<b>County:</b> Hertfordshire	<b>District:</b> Welwyn Hatfield
<b>Village/Town:</b> Brookmans Park	<b>Parish:</b> North Mymms
<b>Planning application reference:</b>	6/07/1704
<b>Client name/address/tel:</b>	Relmfield Builders Ltd
<b>Nature of application:</b>	Substantial extension to rear of house to expand use as a care home
<b>Present land use:</b>	Care home
<b>Size of application area:</b> 14,187m <sup>2</sup>	<b>Size of area investigated:</b> c. 1,261m <sup>2</sup>
<b>NGR (8 figures):</b>	TL 26440 03834
<b>Site Code:</b>	AS 1139
<b>Site director/Organisation:</b>	Archaeological Solutions Ltd
<b>Type of work:</b>	Archaeological Watching Brief
<b>Date of work:</b>	20 <sup>th</sup> – 22 <sup>nd</sup> May 2008
<b>Curating museum:</b>	Mill Green Museum, Hatfield
<b>Related SMR Nos:</b> None	<b>Periods represented:</b> Unknown
<b>Relevant previous summaries/reports: -</b>	Wilcox S 2004 <i>Mymwood House, North Mymms, Herts: an historical assessment</i> . Unpublished desk-based assessment held at Hertfordshire HER
<b>Summary of fieldwork results:</b>	<p>In May 2008, Archaeological Solutions Ltd (AS) undertook archaeological monitoring and recording on land at Mymwood House, Shepherds Way, Brookmans Park, Hatfield, Hertfordshire (TL 26440 03834). The monitoring was undertaken in advance of the erection of a single storey extension to the rear of the property.</p> <p>The programme of monitoring and recording was undertaken to the north-east of Mymwood House. A modern gravel path and services associated with the house were found. No archaeological features or finds were uncovered.</p>
<b>Author of summary:</b> Williams, M.	<b>Date of Summary:</b> October 2008



## PHOTOGRAPHIC INDEX



DP 1 Mymwood House, view southeast



DP 2 Removal of deposits, view north east

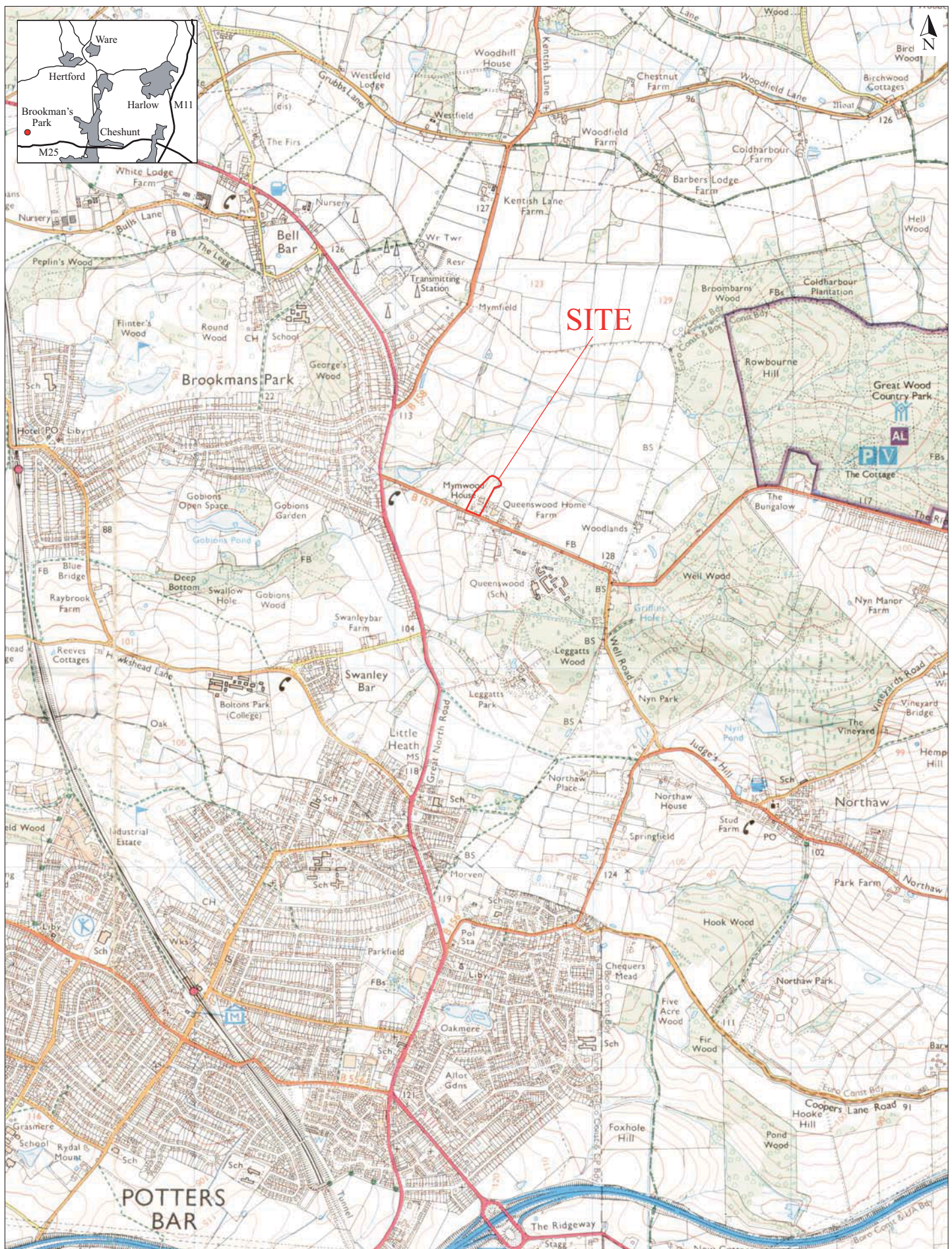


DP 3 Gravel Path L1002, view south



DP 4 Manhole F1005, view east

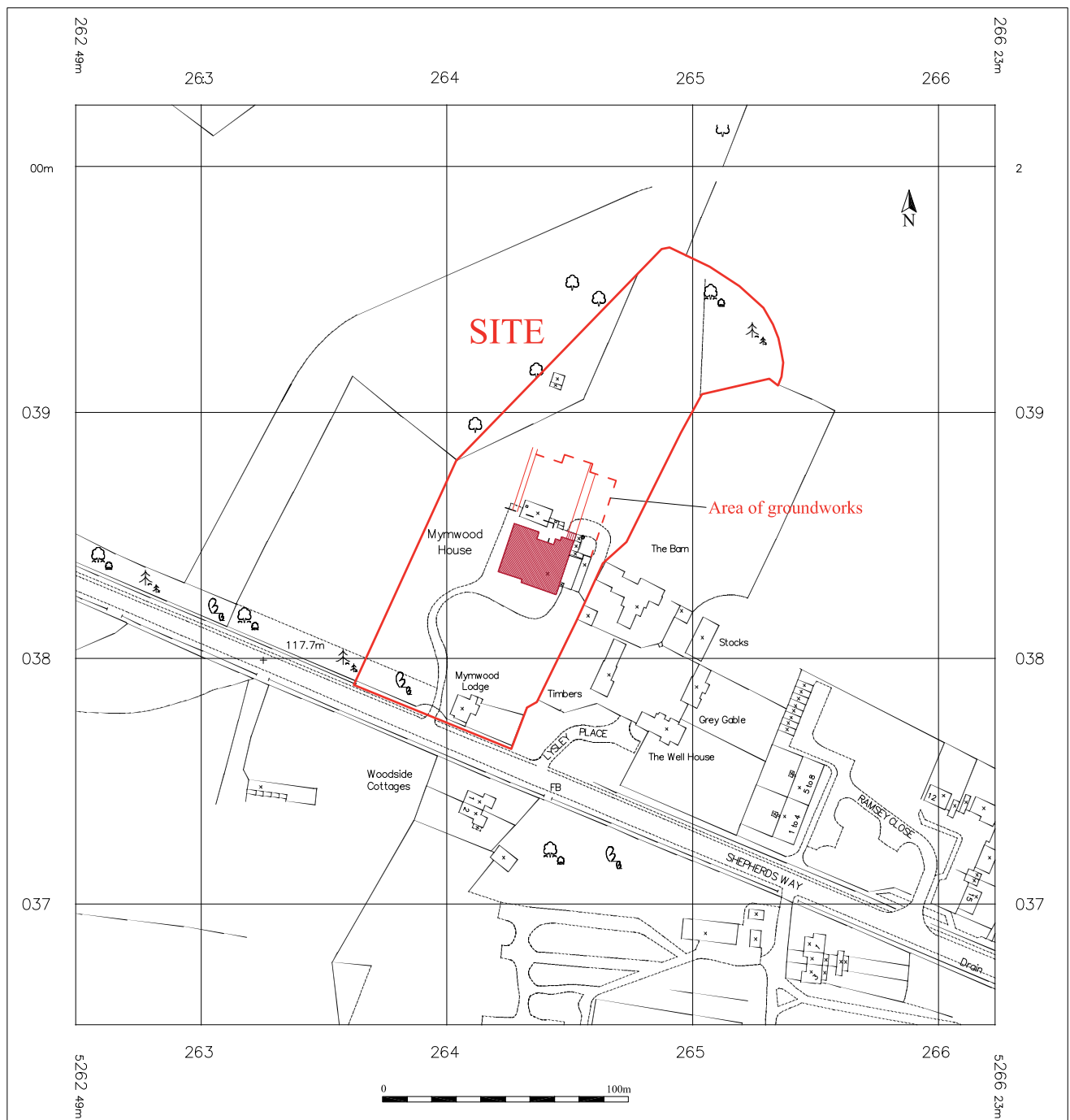




Reproduced from the 1999 Ordnance Survey 1:25000 map with the permission of Her Majesty's Stationery Office. Crown copyright  
Archaeological Solutions Ltd  
Licence number 100036680

*Archaeological Solutions Ltd*  
**Fig. 1 Site location plan**  
Scale 1:25,000 at A4

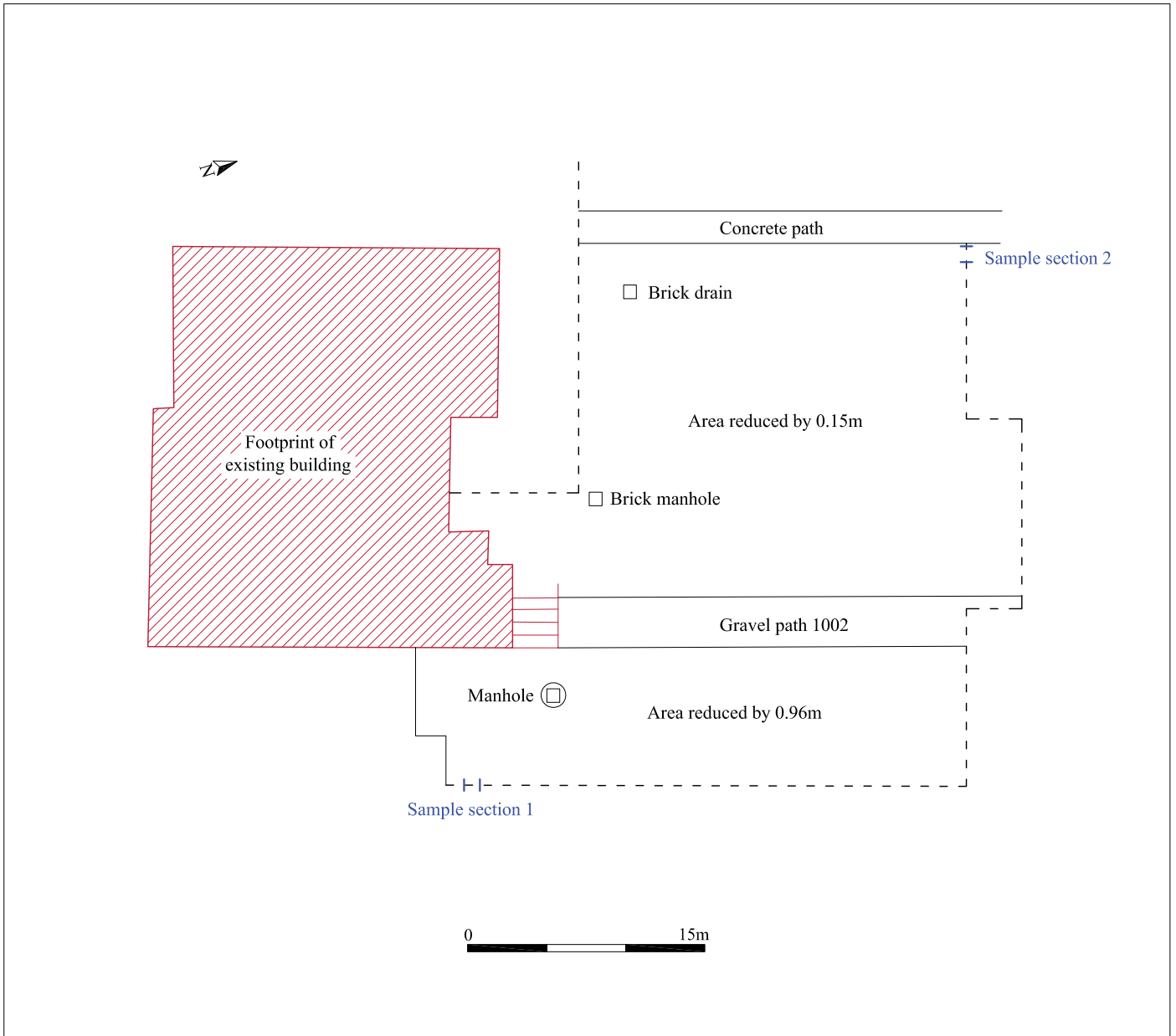




Archaeological Solutions Ltd

**Fig. 2 Detailed site location plan**

Scale 1:2500 at A4



<i>Archaeological Solutions Ltd</i>
<b>Fig. 3 Groundworks monitored</b>
Scale 1:400 at A4

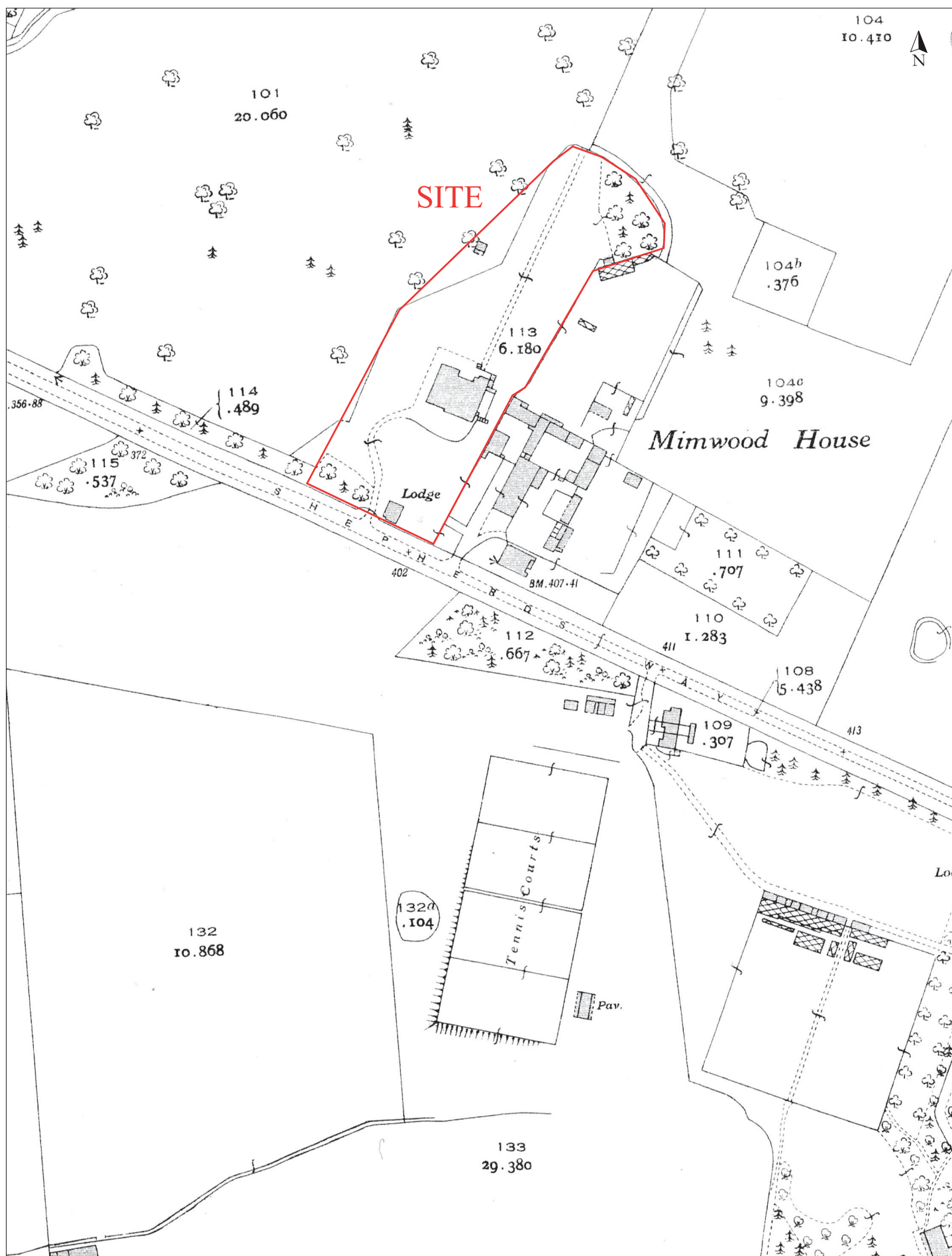


Reproduced from the 1898 Ordnance Survey 25" to 1 mile map with the permission of Her Majesty's Stationery Office. © Crown copyright Archaeological Solutions Ltd Licence number 100036680

*Archaeological Solutions Ltd*

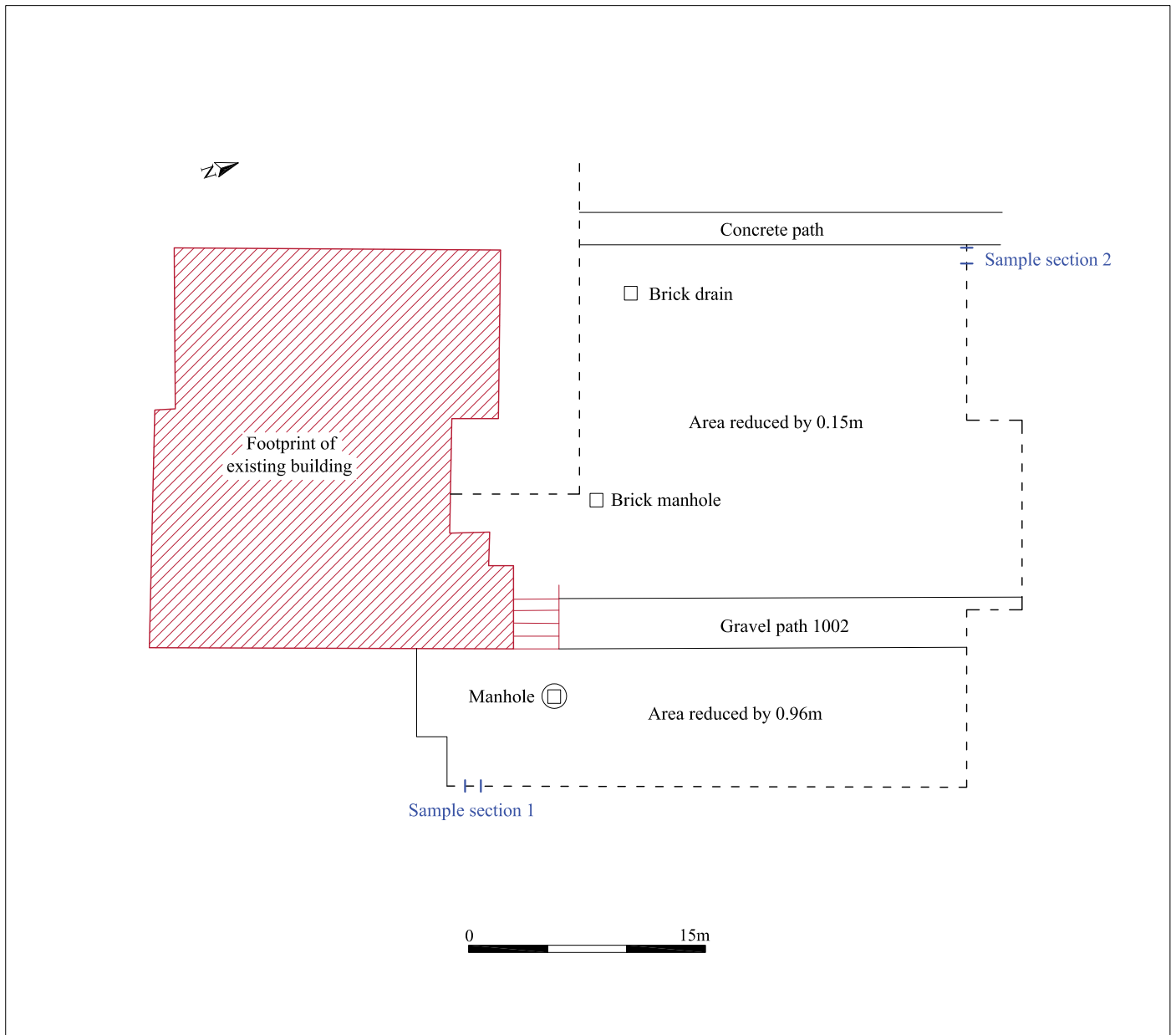
**Fig. 4 1st edition OS map, 1898**

Reproduced from the OS 25 inch to 1 mile map



Reproduced from the 1935 Ordnance Survey 25" to 1 mile map with the permission of Her Majesty's Stationery Office. © Crown copyright  
 Archaeological Solutions Ltd  
 Licence number 100036680

**Archaeological Solutions Ltd**  
**Fig. 5 OS map, 1935**  
 Reproduced from the OS 25 inch to 1 mile map



<i>Archaeological Solutions Ltd</i>
<b>Fig. 6 Groundworks monitored</b>
Scale 1:400 at A4