

Humber Field Archaeology

Archaeological Consultants and Contractors



HISTORIC BUILDING RECORDING

**52A & 54 BRUNSWICK ARCADE
BEVERLEY ROAD
KINGSTON UPON HULL**

September 2021

Humber Field Archaeology Report no. 2184

HISTORIC BUILDING RECORDING

AT

52A & 54 BRUNSWICK ARCADE

BEVERLEY ROAD

KINGSTON UPON HULL

September 2021

*Work carried out for NPS Humber
On behalf of
Hull City Council*

National Grid Reference: TA 0907 2957
HFA Site Code: WB2021.023

B Eyre

HUMBER FIELD ARCHAEOLOGY, The Old School, Northumberland Avenue,
KINGSTON UPON HULL, HU2 0LN

September 2021

Humber Field Archaeology Report no. 2184

REPORT DETAILS	
<i>Report title:</i>	Historic building recording at 52A & 54 Brunswick Arcade, Beverley Road, Kingston upon Hull
<i>Document Type:</i>	Fieldwork report
<i>Report Number</i>	2184
<i>Client Name:</i>	NPS Humber
<i>Site Code:</i>	WB2021.023
<i>National Grid Reference:</i>	TA 0907 2957
<i>Version:</i>	1
<i>Date:</i>	24/09/2021
<i>Author(s):</i>	Bradley Eyre
<i>Position(s):</i>	Archaeological Supervisor
<i>Checked by:</i>	Dave Atkinson
<i>Position:</i>	Project Manager
<i>Approved by:</i>	Dave Atkinson
<i>Position:</i>	Project Manager

Contents

List of Figures	3
List of Plates	3
1 SUMMARY	5
2 INTRODUCTION	6
2.1 Circumstances of the fieldwork	6
2.2 Historic background	6
3 THE EXCAVATIONS	7
3.1 Methodology	7
3.2 Results	7
4 DISCUSSION	10
ACKNOWLEDGEMENTS	10
REFERENCES	10
APPENDICES	11
Appendix 1	11
Appendix 2	13

List of Figures

(located at end of report)

Figure 1 Site location plan

Figure 2 Photographic plan of ground and first floors

Figure 3 Photographic plan of second and third floors

List of Plates

(located at end of report)

Plate 1 General view of eastern elevation, looking west.

Plate 2 Oblique view of eastern elevation, looking north-west.

Plate 3 Detail shot of internal doorway on ground floor of eastern elevation, looking west.

Plate 4 General view of opening on ground floor of eastern elevation, looking west.

Plate 5 Detail shot of bricked up doorway on ground floor of eastern elevation, looking south-west.

Plate 6 Detail shot of floor tiles on ground floor at rear of the property (0.50m scale).

Plate 7 Structural remains showing construction marks from a now demolished portion of the building, looking north (0.50m scale).

Plate 8 Detail shot of hole in the roof used to facilitate the construction of a scaffold, looking north-east.

Plate 9 General shot of chimney stack showing outdented brick patterns, looking north-east.

Plate 10 Detail shot of sill of dormer window, looking east (0.50m scale).

Plate 11 Brick details and end pillar to the south of dormer window, looking south-east (0.50m scale).

Plate 12 Overview of stone detail above dormer window, looking north-east (0.50m scale).

Plate 13 Decorative stone capping above dormer window, looking east (0.50m scale).

Plate 14 General view over rooftop of Brunswick Arcade, looking north-east.

Plate 15 Boarded up window on the southern side of bay window on second storey, looking east.

Plate 16 General view of boarded up windows on second storey, looking north.
Plate 17 In-situ drainpipe feeding into modern replacement fall pipe, looking south-east.
Plate 18 West facing sill and underlying indented brick patten in bay window on first storey, looking east (0.50m scale).
Plate 19 Detail shot of decorative stone capitals on brick columns situated on the western elevation, looking east (0.50m scale).
Plate 20 Detail shot of decorative columns underneath sill of bay window on first storey, looking south-east (0.50m scale).
Plate 21 Detail shot of fall pipe feeding into hopper added as a later addition, looking east (0.50m scale).
Plate 22 Detail shot of decorative brickwork showing a scrolled pattern between windows on the first storey, looking east.
Plate 23 Detail shot of curbed glass pane in northern bay window of first storey, looking north-east (0.50m scale).
Plate 24 General view of western elevation prior to the addition of scaffolding, looking east.

1 SUMMARY

In September 2021 a programme of historic building recording was undertaken by Humber Field Archaeology in advance of the demolition and subsequent reconstruction of 52A & 54 Brunswick Arcade, Beverley Road, Kingston upon Hull.

Brunswick Arcade was a three-storey building comprising a brick-and-mortar construction with a largely Stretcher bond throughout. Whilst the western elevation of the building remains intact, if not heavily deteriorated, additional buildings at the rear of the property have been demolished by the time of the investigation.

The most prominent feature of the building would be the two-storey brick-built bay window situated on the southern end of the western elevation leading into the dormer window present within the roof on the same side. A similarly decorative wooden framed bay window is present on the opposing end of the building but due to the materials used is in a highly deteriorated state. In line with the condition of the building at the time of the investigation a suitable survey has been carried out to facilitate the demolition of the structure ahead of rebuilding.

2 INTRODUCTION

2.1 Circumstances of the fieldwork

The report presents the results of a programme of historic building recording in response to a condition on the demolition notice dated 9th September 2021, for 52a and 54 Brunswick Arcade, Beverley Road, Kingston upon Hull and the work was subsequently undertaken on the 24th of September 2021.

The demolition of the building was subject to a condition which states:

‘A Historic England Level 1 Photographic Survey and Building Recording to take place on the external features of the building before it is demolished and rebuilt.’

The Humber Historic Environment Record Office (HHER), archaeological advisors to Hull City Council (HCC), had recommended that a programme of historic building recording be undertaken to record any surviving architectural remains which would be destroyed.

Humber Field Archaeology (HFA) were appointed to undertake the archaeological work and produced a site-specific written scheme of investigation (WSI) which was submitted to and approved by HHER and the local planning authority in advance of any work commencing on site.

2.2 Historic background

The background reproduced here is taken from the HER record MHU23812.

Brunswick Arcade was built in the 1890's to meet the demand for shops along Beverley Road following the arrival of the tramway in 1875.

3 THE EXCAVATIONS

3.1 Methodology

The work associated with this project was carried out by staff from HFA, in accordance with the written scheme of investigation for historic building recording produced by HFA, (Atkinson, D. September 2021), with reference to the Chartered Institute for Archaeologists 2014 Standard and Guidance for the archaeological investigation and recording of standing buildings or structures.

The scheme of works comprised the photographic recording of the building as it stands with the intention of highlighting surviving architectural features of aesthetic or historic interest. A single visit was made to the site on the 24th September 2021.

The digital photographic record was undertaken using a Pentax Optio WG-1 14 megapixel camera, and a selection of the digital photographs is presented as plates with this report.

All plate locations related to the architectural recording are included in the accompanying 1:500 scale plans of the building (Figures 3 & 4) which were generated from an existing plan created and provided by NPS Humber and modified using AutoCAD for the purposes of this illustration.

A concordance table cross-referencing all the digital photographs is included as Appendix 1 of this report and contained in the project archive.

3.2 Results

(Plates 1 - 23, Figures 3 & 4)

General Description

The building, in its current state, comprises a three-storey brick-built building with a pitched slate-covered roof.

The western elevation of the building displays three storeys, the third being within the roof itself, with a wooden framed bay window present on the north side on the first floor. On the southern end of the first floor a more decorative brick-built bay window is present that extends through onto the second and third floors and has decorative stone columns either side. An elaborate arched dormer window adorns the third storey in the same vertical alignment as the bay window below.

Worthy of note, and as has been derived from photographs predating the work, on the western elevation it is clear to see two phases of rebuilding having occurred. The ground floor has been knocked out and rebuilt likely to facilitate repurposing or a change in structure on this level. Additionally the second storey north of the decorative bay window has also been replaced at some point with fewer design features than its counterparts on other floors.

To the rear of the building progressively smaller flat roofed portions of the building extend towards the property boundary and, whilst the additions limited to the ground level have been

demolished prior to this phase of works, structural remains in the adjoining wall to the north indicate the location of one such extension.

External Descriptions

East Elevation

As part of this investigation the eastern elevation at the rear of the property was largely off limits for access and so the investigation was carried out at ground level or from a platform situated to the south east of the building at approximately first storey height.

What remains of the building is of brick-and-mortar construction in Stretcher bond throughout which extended to the front elevation as well. Two entrances are present at the ground floor level with a smaller doorway with an arched top to the southern side of the elevation with a larger, degraded opening present more northerly. This northern entry also showed signs of a bricked up arched doorway on the northern edge (Plate 4) and the presence of internal floor tiles was also noted to the east of this larger entrance (Plate 6). Whilst recorded in previous plans, two flat roofed additions to the main building have since been demolished with the western most of the two surviving in the form of sockets that would have joined it to the northern adjoining wall (Plate 7).

From the ground level a total of six windows were present on the second storey with two smaller ones positioned on the north and south sides respectively whilst two larger ones were positioned more centrally.

West Elevation

Due to the erection of scaffolding it was possible to gain access to the entire western elevation of the building and allow recording of the relevant architectural features. Whilst beneficial to covering a significant part of the elevation the scaffolding did also impose restrictions on what was visible at the time of investigation which could not be entirely avoided including the total covering of the ground floor and additional parts of the building being obstructed from view.

The first storey exhibits an elaborate wooden framed bay window on the northern end of the building although most of it was boarded over except for the southern facing pane which was curved with most of the frame intact still (Plate 22). Some of the more ornate portions of frame were visible through the boarding as well. A central portion of the elevation was also boarded up to cover two windows that would have been present. On the southern end of the building a brick-built bay window was present and indented into the face creating a stylised alcove around the window itself and featured brick pillars with stone capitals on either side. Indentations within the brickwork were also identified (Plate 18). Underneath the sill of this window a row of decorative pillars were present and featured under each pane (Plate 20). Whilst not identifiable during the visit due to scaffolding limitations, it can be seen from earlier photographs that a scrolled design within the brickwork is present between the first and second storey windows (Plate 22). A similar pattern is exhibited on the adjoining buildings and indicate that it was a period feature.

The second storey was predominantly boarded over and so it was not possible to make many observations of the features there. It was noted that the brick-built bay window identified

below was present continuing in the same formation it had taken previously, the main difference here being the absence of the ceramic pillars beneath the sills. At the southernmost edge of the building an in-situ drainpipe was identified (Plate 17) which now feeds into a modern addition.

The third storey of the Brunswick Arcade was largely housed within the roof space of the building and therefore largely off limits for this investigation, however the large stone and brick-built pedimented dormer window adorning the southern end of the building in line with the bay window beneath forms a significant feature. Housing a wooden framed window (Plate 10) it features stone scrolling at the roof level (Plate 12) as well as a capped pillar (Plate 13). Towards the northern end of the building the chimney stack stands with an outdented brick pattern up the faces (Plate 9). The roof is also adorned with ornamental two holed hexagonal ridge tiles that alternate with standard undecorated ridge tiles.

4 DISCUSSION

The following is solely the opinion of HFA, and may not reflect that of the HHER, archaeological advisors to the Local Planning Authority.

Whilst decorative features of the building remain in the form of the brick-built bay window to the south, the elaborate stone and brick dormer window on the third floor and the wooden bay window on the northern end of the first storey, the deterioration of the structure as a whole have left it in poor condition.

As such and in line with the requirements outlined within the WSI, an appropriately thorough investigation and recording has taken place to ensure the preservation of architectural features in record ahead of the building's demolition prior to later reconstruction.

ACKNOWLEDGEMENTS

Thanks are accorded to NPS Humber and Geo Houltons & Sons Ltd for their help and co-operation during the course of this project.

The site recording and reporting was undertaken by Bradley Eyre

Administrative support was provided by Georgina Richardson.

REFERENCES

Atkinson, D. 2021

52A & 54 Brunswick Arcade, Beverley Road, Kingston upon Hull: written scheme of investigation for historic building recording, September 2021.

Brown, D. H. 2007

Archaeological Archives: A guide to best practice in the creation, compilation, transfer and curation, Published by IFA on behalf of the Archaeological Archives Forum

Chartered Institute for Archaeologists 2014

Standard and Guidance for the creation, compilation, transfer and deposition of archaeological archives December 2014

Historic England, 2016

Understanding Historic Buildings. A Guide to Good Recording Practice

Ministry of Housing, Communities and Local Government 2019

National Planning Policy Framework

APPENDICES

Appendix 1

Photographic Table

Photograph	Site Code	Digital	Direction of view	Description	Pub?
1	WB2021.023	1	NW	General view of eastern elevation	No
2	WB2021.023	2	N	Oblique view of eastern elevation at first floor level	Yes
3	WB2021.023	3	W	General view of eastern elevation	No
4	WB2021.023	4	W	General view of eastern elevation up to second floor level	Yes
5	WB2021.023	5	W	Slightly arched internal entrance	Yes
6	WB2021.023	6	OH	Remains of internal floor tiles	Yes
7	WB2021.023	7	W	Green tiles present within internal room now exposed due to demolition	No
8	WB2021.023	8	NW	Limited internal view of northern room on ground floor	No
9	WB2021.023	9	W	Limited internal view of central room of ground floor	Yes
10	WB2021.023	10	W	Bricked up entryway with arched top	Yes
11	WB2021.023	11	N	Structural remains evidencing demolished extension	Yes
12	WB2021.023	12	OH	Backfilled brick sided hollow	No
13	WB2021.023	13	E	Parapet wall on roof level/third storey	No
14	WB2021.023	14	NE	View inside roof/third storey	Yes
15	WB2021.023	15	E	Chimney stack with outdented vertical brick pattern	No
16	WB2021.023	16	NE	Chimney stack with outdented vertical brick patterns	Yes
17	WB2021.023	17	E	Concrete window bottom with wooden frame to southern end of third storey	Yes
18	WB2021.023	18	E	Internal view through southern window on third storey	No
19	WB2021.023	19	E	Brickwork surround to south of decorative window	No
20	WB2021.023	20	SE	Extent of brickwork surround with finishing pillar	Yes
21	WB2021.023	21	E	Pitch of roof showing damage to tiles	No
22	WB2021.023	22	E	Stone decoration above third storey window	No
23	WB2021.023	23	NE	Oblique shot of stone decoration above third story window	Yes
24	WB2021.023	24	E	Stone decoration above third storey window	Yes
25	WB2021.023	25	NW	General view from roof	No

Photograph	Site Code	Digital	Direction of view	Description	Pub?
26	WB2021.023	26	SW	General view from roof	No
27	WB2021.023	27	NE	General view over rooftop showing scaffold holes and chimney	Yes
28	WB2021.023	28	E	Boarded over window forming part of bay window on southern side of second storey	Yes
29	WB2021.023	29	E	Top of main bay window on second storey with some basic frame decoration present	No
30	WB2021.023	30	E	Close up of the column decoration present around window on second storey	No
31	WB2021.023	31	NE	Northern side of bay window on second storey	No
32	WB2021.023	32	E	Probable drainage hole in wall next to stone window decoration	No
33	WB2021.023	33	N	General shot of boarded over windows on second storey	Yes
34	WB2021.023	34	SE	Remains of drain pipe feeding into a modern replacement fallpipe	Yes
35	WB2021.023	35	E	Sill of window and indented brick pattern underneath on first storey	Yes
36	WB2021.023	36	NE	Side of bay window at south end of building on first floor	No
37	WB2021.023	37	E	In situ iron fall pipe within channel between decorated stones	Yes
38	WB2021.023	38	E	Decorated stone column head on first storey	No
39	WB2021.023	39	E	Bay window sill on first storey with decorative pillars underneath	No
40	WB2021.023	40	E	Close up of the decorative pillars beneath window sill on first storey	No
41	WB2021.023	41	SE	General view of decorative pillars beneath window sill on first storey	Yes
42	WB2021.023	42	E	Iron fall pipe feeding into iron hopper on first storey	Yes
43	WB2021.023	43	NE	In tact curved window on southern side of northern bay window on first storey	Yes
44	WB2021.023	44	NE	Broken glass and wooden frame of northern bay window on first storey	No
45	WB2021.023	45	E	In tact decorative wooden frame in northern bay window on first storey	No

Appendix 2

Archive

Project Details: Historic Building Recording; 52A & 54 Brunswick Arcade, Beverley Road, Kingston upon Hull.

Site Code: WB2021.023

National Grid Reference: TA 0907 2957

SMR Casework Reference:

Planning Reference Number:

Museum Reference or Accession Number:

Author B Eyre

Date of fieldwork 24th September 2021

Report Number. Humber Field Archaeology Report Number 2184

Quantity

1x A4 folder contains the paper archive.

The digital archive is stored on Hull City Council servers.

No artefacts were found.

Summary of work.

In September 2021 a programme of historic building recording was undertaken by Humber Field Archaeology in advance of the demolition and subsequent reconstruction of 52A & 54 Brunswick Arcade, Beverley Road, Kingston upon Hull.

Brunswick Arcade was a three-storey building comprising a brick-and-mortar construction with a largely Stretcher bond throughout. Whilst the western elevation of the building remains intact, if not heavily deteriorated, additional buildings at the rear of the property have been demolished by the time of the investigation.

The most prominent feature of the building would be the two-storey brick-built bay window situated on the southern end of the western elevation leading into the dormer window present within the roof on the same side. A similarly decorative wooden framed bay window is present on the opposing end of the building but due to the materials used is in a highly deteriorated state. In line with the condition of the building at the time of the investigation a suitable survey has been carried out to facilitate the demolition of the structure ahead of rebuilding.

Index to Archive

Archive component	Hard Copy	Digital Copy	Notes
1.1 Site Summary/ Abstract	<input checked="" type="checkbox"/>	<input checked="" type="checkbox"/>	
1.2 Archive Index	<input checked="" type="checkbox"/>	<input checked="" type="checkbox"/>	
1.3 Guide to Elements of the Archaeological Archive	<input type="checkbox"/>	<input checked="" type="checkbox"/>	
	<input type="checkbox"/>	<input type="checkbox"/>	
	<input type="checkbox"/>	<input type="checkbox"/>	
2. Project Planning			
2.1 Planning Documentation	<input type="checkbox"/>	<input type="checkbox"/>	
2.2 Written Scheme of Investigation/ Project Design/ Project Specification	<input checked="" type="checkbox"/>	<input checked="" type="checkbox"/>	
2.3 Risk Assessment	<input checked="" type="checkbox"/>	<input checked="" type="checkbox"/>	
2.4 Correspondence (date order)	<input type="checkbox"/>	<input checked="" type="checkbox"/>	
2.5 Miscellaneous documentation (flow charts, bills, receipts, administration, staffing etc.)	<input type="checkbox"/>	<input type="checkbox"/>	
	<input type="checkbox"/>	<input type="checkbox"/>	
	<input type="checkbox"/>	<input type="checkbox"/>	
3. Initial Survey and Documentary Research			
3.1 HER Information	<input type="checkbox"/>	<input type="checkbox"/>	
3.2 Historic Maps	<input type="checkbox"/>	<input type="checkbox"/>	
3.3 Documentary Research	<input type="checkbox"/>	<input type="checkbox"/>	
3.4 Desk-Based Assessment	<input type="checkbox"/>	<input type="checkbox"/>	
3.5 Geophysical Survey Report	<input type="checkbox"/>	<input type="checkbox"/>	
3.6 Aerial Photographs	<input type="checkbox"/>	<input type="checkbox"/>	
3.7 Other Survey material	<input type="checkbox"/>	<input type="checkbox"/>	
	<input type="checkbox"/>	<input type="checkbox"/>	
	<input type="checkbox"/>	<input type="checkbox"/>	
4 Site Fieldwork Data			
4.1 Site notes and diaries	<input type="checkbox"/>	<input type="checkbox"/>	
4.2 Context Index and Context Sheets	<input type="checkbox"/>	<input type="checkbox"/>	
4.3 Level Books	<input type="checkbox"/>	<input type="checkbox"/>	
4.4 Plan Index and Plans	<input type="checkbox"/>	<input type="checkbox"/>	
4.5 Section Index and Section Drawings	<input type="checkbox"/>	<input type="checkbox"/>	
4.6 Survey and Sketch	<input type="checkbox"/>	<input type="checkbox"/>	
	<input type="checkbox"/>	<input type="checkbox"/>	
	<input type="checkbox"/>	<input type="checkbox"/>	
5 Photographic Record:			
5.1 Photographic Site Record Sheets	<input type="checkbox"/>	<input type="checkbox"/>	
5.2 Photographic Concordance Table (database printout)	<input checked="" type="checkbox"/>	<input checked="" type="checkbox"/>	
5.3 Contact Sheets	<input checked="" type="checkbox"/>	<input checked="" type="checkbox"/>	
5.4 Negatives	<input type="checkbox"/>	<input type="checkbox"/>	
5.5 Colour Transparencies (slides)	<input type="checkbox"/>	<input type="checkbox"/>	
5.6 Prints	<input type="checkbox"/>	<input type="checkbox"/>	
5.7 Digital Images (computer printout)	<input checked="" type="checkbox"/>	<input checked="" type="checkbox"/>	

	<input type="checkbox"/>	<input type="checkbox"/>	
	<input type="checkbox"/>	<input type="checkbox"/>	
6 Post-excavation Fieldwork Data:			
6.1 Matrices and Phasing Information	<input type="checkbox"/>	<input type="checkbox"/>	
6.2 AutoCAD Site Drawings	<input type="checkbox"/>	<input type="checkbox"/>	
6.3 Site Structural Report Draft	<input type="checkbox"/>	<input type="checkbox"/>	
	<input type="checkbox"/>	<input type="checkbox"/>	
	<input type="checkbox"/>	<input type="checkbox"/>	
7 Digital Archive			
7.1 Digital Archive Storage Statement	<input type="checkbox"/>	<input type="checkbox"/>	
7.2 Contents of digital archive	<input type="checkbox"/>	<input type="checkbox"/>	
7.3 CD / DVDs	<input type="checkbox"/>	<input type="checkbox"/>	
7.4 Other Discs	<input type="checkbox"/>	<input type="checkbox"/>	
7.5 Metadata for Digital Record (data about data, eg what the codes mean)	<input type="checkbox"/>	<input type="checkbox"/>	
	<input type="checkbox"/>	<input type="checkbox"/>	
	<input type="checkbox"/>	<input type="checkbox"/>	
8 Material Archive Record			
8.1 Post-excavation Finds Progress Checklist Sheet	<input type="checkbox"/>	<input type="checkbox"/>	
8.2 Recorded Finds Index and Sheets	<input type="checkbox"/>	<input type="checkbox"/>	
8.3 Context Finds Sheets	<input type="checkbox"/>	<input type="checkbox"/>	
8.4 Bulk Finds Sheets	<input type="checkbox"/>	<input type="checkbox"/>	
8.5 Recorded Finds Assessment Draft	<input type="checkbox"/>	<input type="checkbox"/>	
8.6 Recorded Finds Database Copy	<input type="checkbox"/>	<input type="checkbox"/>	
8.7 Recorded Finds Illustrations	<input type="checkbox"/>	<input type="checkbox"/>	
8.8 Bulk Finds Assessment Draft	<input type="checkbox"/>	<input type="checkbox"/>	
8.9 Bulk finds Illustrations	<input type="checkbox"/>	<input type="checkbox"/>	
8.10 Pottery Database Copy	<input type="checkbox"/>	<input type="checkbox"/>	
8.11 Spot Dating Record	<input type="checkbox"/>	<input type="checkbox"/>	
8.12 Pottery Assessment Report Draft	<input type="checkbox"/>	<input type="checkbox"/>	
8.13 Pottery Illustrations	<input type="checkbox"/>	<input type="checkbox"/>	
8.14 Ceramic Building Materials Assessment Draft	<input type="checkbox"/>	<input type="checkbox"/>	
8.15 Industrial Residues Assessment Draft	<input type="checkbox"/>	<input type="checkbox"/>	
8.16 Scientific Analysis and Dating Reports	<input type="checkbox"/>	<input type="checkbox"/>	
8.17 Finds Digital Photographs Index	<input type="checkbox"/>	<input type="checkbox"/>	
8.18 Finds Digital Images (computer printout)	<input type="checkbox"/>	<input type="checkbox"/>	
8.19 Box Index	<input type="checkbox"/>	<input type="checkbox"/>	
8.20 Material Archive Rationalisation Sheet	<input type="checkbox"/>	<input type="checkbox"/>	
8.21 Finds Archive Contents Sheet	<input type="checkbox"/>	<input type="checkbox"/>	
	<input type="checkbox"/>	<input type="checkbox"/>	
	<input type="checkbox"/>	<input type="checkbox"/>	
9 Conservation Record			
9.1 Conservation Assessment Report	<input type="checkbox"/>	<input type="checkbox"/>	
9.2 X-rays	<input type="checkbox"/>	<input type="checkbox"/>	
9.3 Conservation Record Sheets for Individual Objects	<input type="checkbox"/>	<input type="checkbox"/>	

9.4 Further conservation Report	<input type="checkbox"/>	<input type="checkbox"/>	
	<input type="checkbox"/>	<input type="checkbox"/>	
	<input type="checkbox"/>	<input type="checkbox"/>	
10 Biological Material Record			
10.1 Sample Index and Sample Sheets	<input type="checkbox"/>	<input type="checkbox"/>	
10.2 Biological Material Data	<input type="checkbox"/>	<input type="checkbox"/>	
10.3 Biological Material Assessment Report Draft	<input type="checkbox"/>	<input type="checkbox"/>	
10.4 Animal Bone Assessment (if a separate report)	<input type="checkbox"/>	<input type="checkbox"/>	
10.5 Shell Assessment (if a separate report)	<input type="checkbox"/>	<input type="checkbox"/>	
10.6 Human Bone Data	<input type="checkbox"/>	<input type="checkbox"/>	
10.7 Human Bone Assessment	<input type="checkbox"/>	<input type="checkbox"/>	
	<input type="checkbox"/>	<input type="checkbox"/>	
11-13 Dissemination			
11. Publicity: Press releases, paper cuttings, recordings of interviews both on the radio and T.V.	<input type="checkbox"/>	<input type="checkbox"/>	
12. Final Assessment Report: The complete Assessment Report. Including illustrations and plates, as sent to the client and Historic Environment Record	<input checked="" type="checkbox"/>	<input checked="" type="checkbox"/>	HFA Report 2184
13. Additional Reports: Interim Statements, watching brief report copy, papers and articles written for journals or other publications.	<input type="checkbox"/>	<input type="checkbox"/>	
	<input type="checkbox"/>	<input type="checkbox"/>	
14 Watching Brief Archive			
14. Watching Brief Archive	<input type="checkbox"/>	<input type="checkbox"/>	
	<input type="checkbox"/>	<input type="checkbox"/>	
	<input type="checkbox"/>	<input type="checkbox"/>	
Publication Archive		<input type="checkbox"/> Did this site proceed to publication after assessment?	

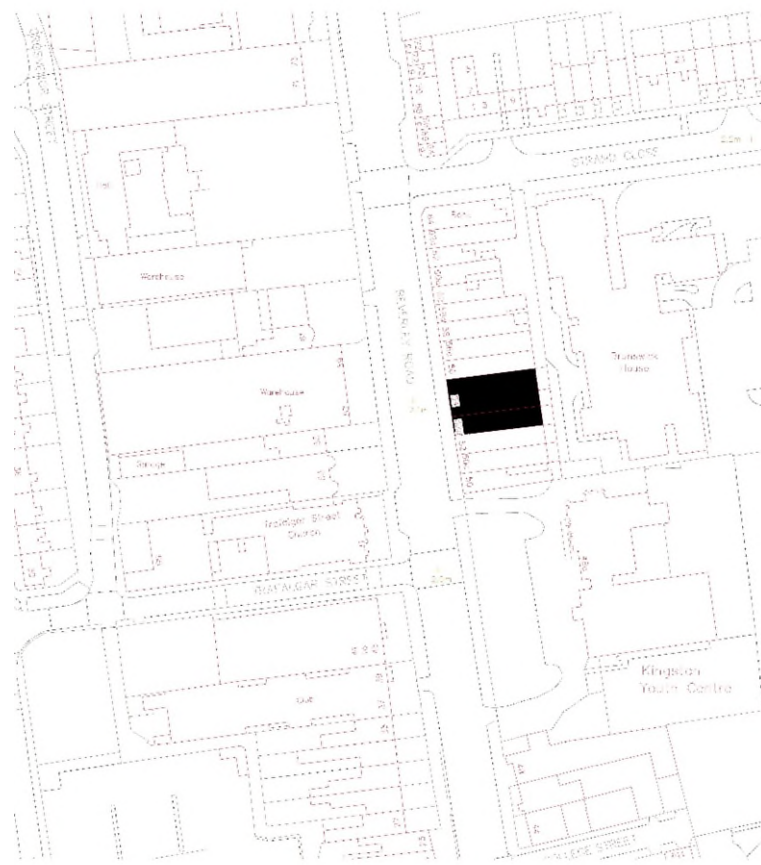


Figure 1 Site location plan

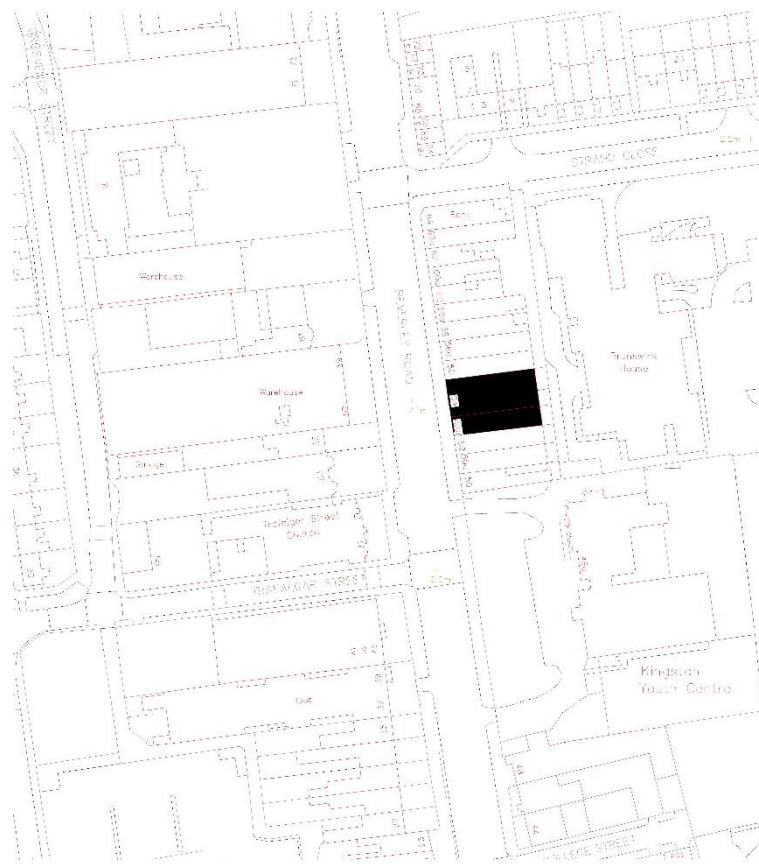


Figure 1 Site location plan

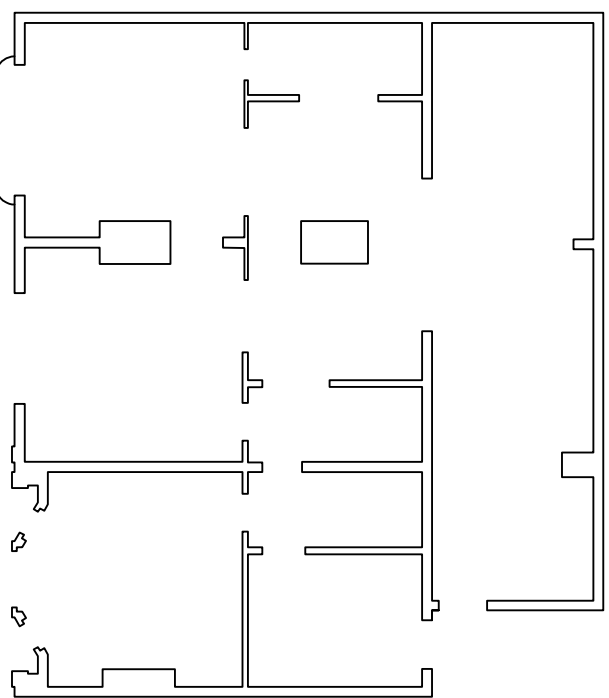
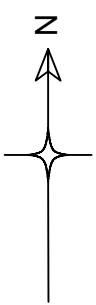
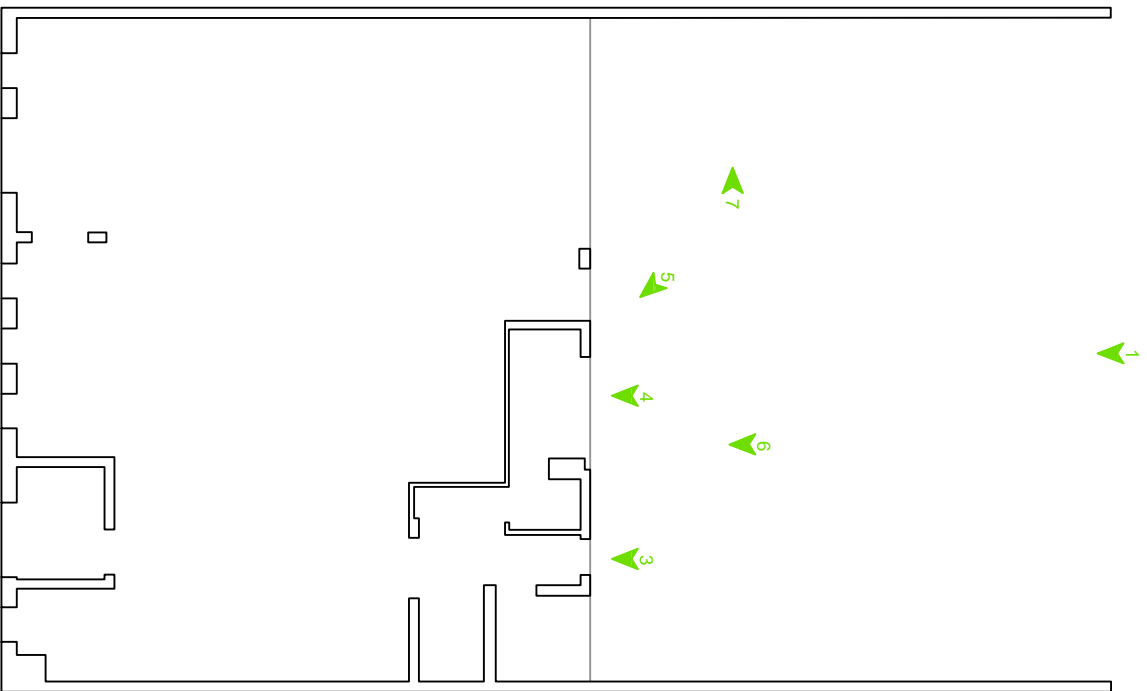


Plate Location



Plate Location on higher level

1:500



Figure 2 Photographic Plan of Ground and First Floors

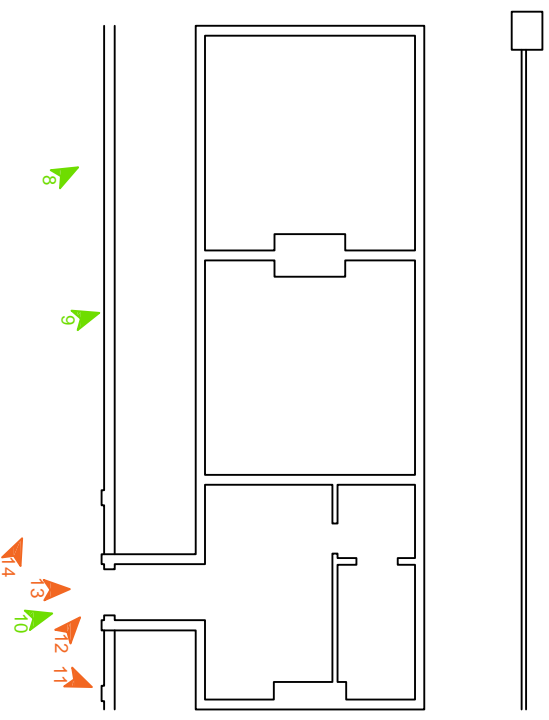
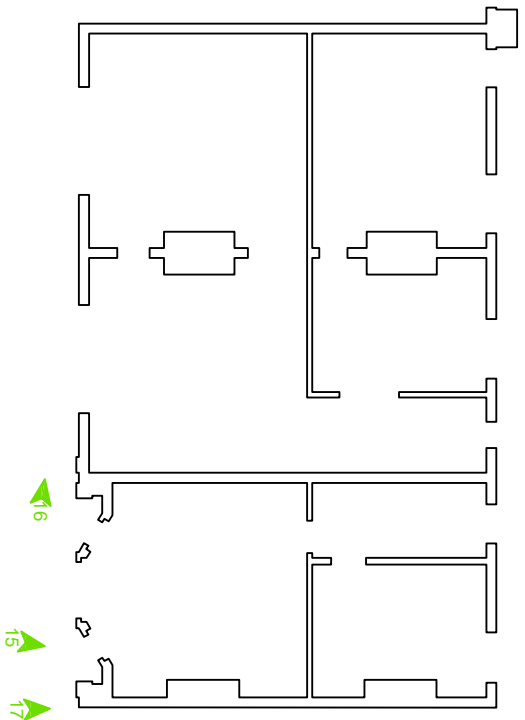
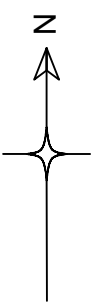


Plate Location



Plate Location on higher level

1:500

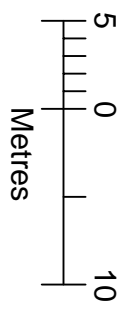


Figure 3 Photographic Plan of Second and Third Floors



Plate 1 General view of eastern elevation, looking west.



Plate 2 Oblique view of eastern elevation, looking north-west.



Plate 3 Detail shot of internal doorway on ground floor of eastern elevation, looking west.



Plate 4 General view of opening on ground floor of eastern elevation, looking west.



Plate 5 Detail shot of bricked up doorway on ground floor of eastern elevation, looking south-west.



Plate 6 Detail shot of floor tiles on ground floor at rear of the property (0.50m scale).



Plate 7 Structural remains showing construction marks from a now demolished portion of the building, looking north (0.50m scale).



Plate 8 Detail shot of hole in the roof used to facilitate the construction of a scaffold, looking north-east.



Plate 9 General shot of chimney stack showing outdented brick patterns, looking north-east



Plate 10 Detail shot of sill of dormer window, looking east (0.50m scale).



Plate 11 Brick details and end pillar to the south of dormer window, looking south-east (0.50m scale).



Plate 12 Overview of stone detail above dormer window, looking north-east (0.50m scale).



Plate 13 Decorative stone capping above dormer window, looking east (0.50m scale).



Plate 14 General view over rooftop of Brunswick Arcade, looking north-east.



Plate 15 Boarded up window on the southern side of bay window on second storey, looking east.



Plate 16 General view of boarded up windows on second storey, looking north.



Plate 17 In-situ drainpipe feeding into modern replacement fall pipe, looking south-east.

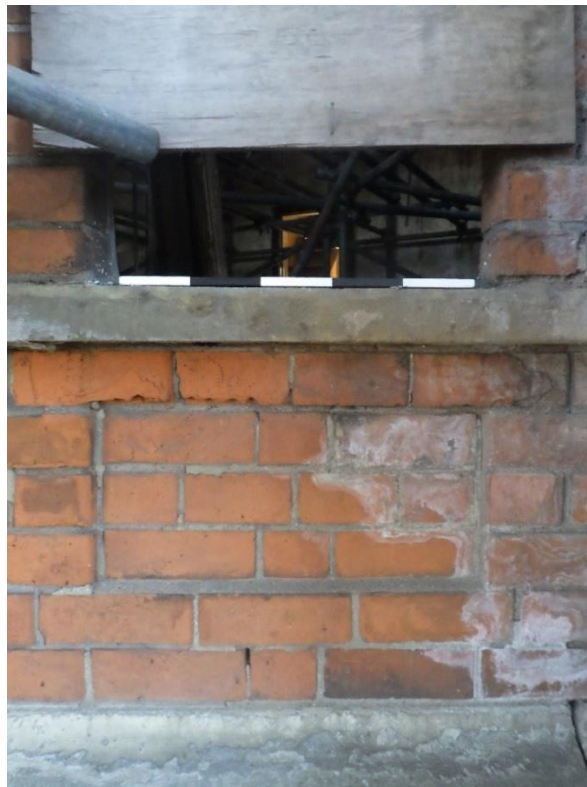


Plate 18 West facing sill and underlying indented brick pattern in bay window on first storey, looking east (0.50m scale).



Plate 19 Detail shot of decorative stone capitals on brick columns situated on the western elevation, looking east (0.50m scale).



Plate 20 Detail shot of decorative columns underneath sill of bay window on first storey, looking south-east (0.50m scale).

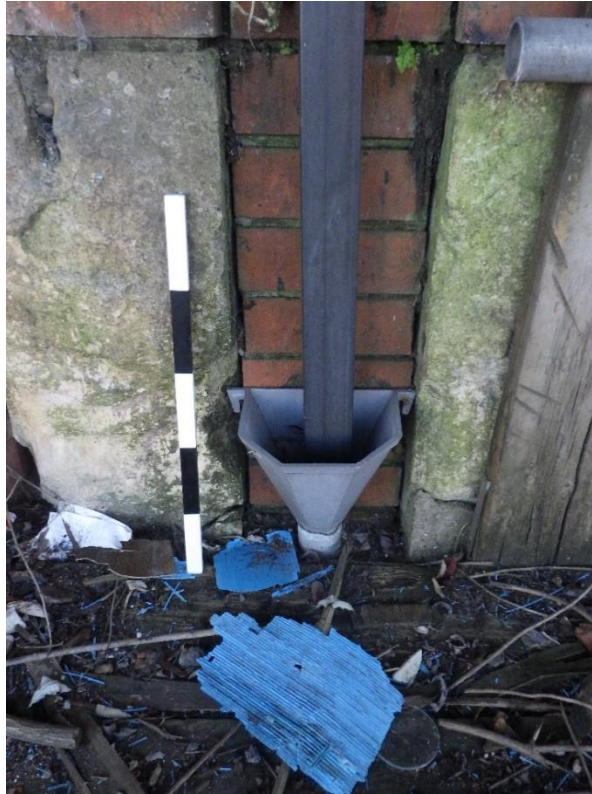


Plate 21 Detail shot of fall pipe feeding into hopper added as a later addition, looking east (0.50m scale).



Plate 22 Detail shot of decorative brickwork showing a scrolled pattern between windows on the first storey, looking east.



Plate 23 Detail shot of curved glass pane in northern bay window of first storey, looking north-east (0.50m scale).



Plate 24 General view of western elevation prior to the addition of scaffolding, looking east.



Humber Field Archaeology

Archaeological Consultants and Contractors

The Old School, Northumberland Avenue,
KINGSTON UPON HULL, HU2 0LN

Telephone (01482) 613191

Email: hfa@hullcc.gov.uk

www.humberfieldarchaeology.co.uk



Project Management • Desk-based Assessment • Field Survey • Fieldwork • Finds Research
• Post-excavation Analysis • Inter-tidal Work

Humber Field Archaeology is an independently-funded part of the Humber Archaeology Partnership, a partnership serving The East Riding of Yorkshire Council and Kingston upon Hull City Council