

T H A M E S V A L L E Y

ARCHAEOLOGICAL

S E R V I C E S

**Bath Road Reservoirs,
Reading, Berkshire**

Building Recording

by Genni Elliott

Site Code: BRR13/109

(SU 7020 7285)

Bath Road Reservoirs, Reading, Berkshire

**Building Recording
For Bewley Homes Plc**

by Genni Elliott
Thames Valley Archaeological Services Ltd

Site Code BRR13/109

February 2014

Summary

Site name: Bath Road Reservoirs, Reading, Berkshire

Grid reference: SU 7020 7285

Site activity: Building Recording

Date and duration of project: 9 August 2013 – 1 November 2013

Project manager: Steve Ford

Site supervisor: Genni Elliott

Site code: BRR 13/109

Summary of results: Much of the site remains as it was designed in 1850 and mapped in 1853. The pump house has undergone a number of changes from its initial design in 1850 through to the first mapping of the site in 1853, with subsequent extensions prior to 1879 and 1910. The water tower did not feature in the initial designs for the site but was built at some point between 1853 and 1879 in the gothic style. Probably around 1930, a new substation and lean to were constructed to the rear of the pump house.

Location and reference of archive: The archive is presently held at Thames Valley Archaeological Services, Reading and will be deposited at Reading Museum in due course.

*This report may be copied for bona fide research or planning purposes without the explicit permission of the copyright holder. All TVAS unpublished fieldwork reports are available on our website:
www.tvas.co.uk/reports/reports.asp.*

Report edited/checked by:	Steve Ford ✓ 12.02.14
	Steve Preston ✓ 11.02.14

Bath Road Reservoirs, Reading, Berkshire Building Recording

by Genni Elliott

Report 13/109

Introduction

This report documents the results of building recording at Bath Road Reservoirs, Reading, Berkshire (SU 7020 7285) (Fig. 1). The work was commissioned by Mr Steve Parks of Bewley Homes Plc, Inhurst House, Brimpton Road, Baughurst, Hampshire, RG26 5JJ.

Planning consent (appln no. 12/00980/FUL) has been granted by Reading Borough Council to redevelop the former reservoirs for residential use. The development is to include conversion of the water tower to residential use, retention of wildlife-rich habitat and demolition of the reservoirs followed by their replacement with housing. The consent is subject to a condition (33) with regards to the heritage of the site and a programme of building recording was proposed prior to conversion and demolition in order to mitigate the effects of the development on the historic structures. This report documents the results of the building survey.

This is in accordance with the Department for Communities and Local Government's Planning Policy Statement, *National Planning Policy Framework* (NPPF 2012), and the Borough's policies on historic buildings. The fieldwork was undertaken by Genni Elliott, Danielle Milbank and Dan Strachan between 9th August and 1st November 2013 and the site code is BRR 13/109.

The archive is presently held at Thames Valley Archaeological Services, Reading and will be deposited at Reading Museum and a copy of the report sent to the National Monuments Record in due course.

Location, topography and geology

The site is located on the north side of Bath Road (A4155) opposite its junction with Berkeley Avenue (A4) to the south-west of Reading town centre, SU 7020 7285 (Figs 1 and 2). The site lies at approximately 60m above Ordnance Datum and the underlying geology is the Lynch Hill gravel terrace (Wymer 1968).

Historical Background

The water tower is grade II listed and is described in its listing as:

‘Circa 1870. A large 2 stage red brick square structure with grey brick bands at intervals, decorative at impost and top levels and with cogged and moulded bracket cornice to blocking course. Each side has 3 tall lancets with grey and red brick voussoirs and stone keyed oculi above.’

The Berkshire Archaeology Historic Environment Record also mentions the pump house and boundary wall:

‘Also at the waterworks site is an unlisted Victorian red brick pump house built in an eclectic baroque revival style. This single storey brick building is of modest architectural pretensions, but is nonetheless a robust piece of municipal engineering. It is of loosely baroque revival style with Dutch gables fronting Bath Road. Visual inspection of the building clearly reveals that it has been extended rearwards into the reservoir bank at some stage, and map evidence indicates that this was during the 20th century. It must be assumed that this building originally housed a steam pump, but it now contained 20th century pumping gear. Along with the water tower and the front boundary wall and railings, the pump house marks a significant stage in the 19th century development of Reading. It seems likely that the pumping station was built around the same time as the water tower. It is probable that it originally housed two 8-horsepower vertical steam engines, which were replaced in 1894 by two large steam engines, with an even larger one added in 1902. The two smaller engines were again replaced in 1927 by three electric pumps and a further diesel pump, presumably replacing the larger steam pump.’

‘At the front of the site, facing Bath Road, there is a continuous limestone boundary wall with cast iron railings set in at intervals extending for the entire site frontage of the site. The railings have decorative foliate bud finials, and scrolled backstays. The boundary wall and railings are of typically mid Victorian style, and clearly date from the time of the establishment of the waterworks site. However, both the railings and wall were deleted from the listing description in 1995. Together with the water tower and unlisted pump house, the railings and boundary wall mark a significant stage in the 19th century development of Reading.’

In 1848 Parliament introduced the Public Health Act as the first step in improving sanitary conditions and therefore public health. It provided a framework that could be used by local authorities but did not force action. It meant that those areas with corporations could assume responsibility for water supply and drainage and could borrow money for infrastructure projects. A local Water Act was passed in 1851 for Reading which was amended in 1868 to further provide waterworks for Reading.

A range of Ordnance Survey and other historical maps of the area were consulted at Berkshire Record Office and online in order to show the development of the site. The original plans for the Bath Road reservoir site (Fig. 3) are dated 30th November 1850 and show the two reservoirs, four circular filtration tanks surrounded by a bund and the pump house in the south-west corner. The field is numbered ‘24’ and is recorded as being an arable field belonging to William Stephens, who appears to be a local landowner. The Board of Health commissioned a map in 1853 of the waterworks within Reading, which included the reservoirs (Fig. 4). This appears to show the site as it was built, with the two reservoirs at the rear and four filtration tanks at the southern end of the site. The pump house was located to the south-west and the superintendents’ house was beside it to the west (now separate from the current site). The pump house has been extended to the rear and cut into the bund around the reservoir. It is not clear whether it was built larger than the original plan or rapidly extended after being built. The boundary with Bath Road is marked by a wall which curves to an entrance at the west end of the site. The water tower is not present at this point.

The next map to show any detail of the site is the 1879 Reading Town plan, which however, extends only as far as the water tower. The rest of the site is included on the 1881 map (Fig. 5) which shows the water tower (labelled tank) and pumping house, behind which were the two reservoirs and six circular tanks. The pump house has been extended again, to the east. At this period the house to the west of the pumping station was included within the boundary of the waterworks and was housing for the superintendent. No change is shown by 1899–1900 (Fig. 6), but the round tanks are now labelled as filter beds. By 1911–1912 (Fig. 7) the eastern block of the pump house has been extended at the front and rear and by 1931–1932 (Fig. 8) further buildings have been added to the rear of the pump house. The westernmost of the filtration beds has also been filled in. By 1958–1960 (Fig. 9) the eastern filtration bed has also been filled in. By 1968 the northern reservoir is labelled as disused and no further changes are apparent.

Methodology

The building survey was carried out in accordance with guidelines set out by the Royal Commission on Historic Monuments for a level 3 record. The survey comprised a fully analytical record of the building's development, a comprehensive photographic survey, paying attention to the methods of construction, chronological development and alterations, and features of special interest. The building has been recorded photographically both digitally and on 35mm format using colour print and black and white media, which are catalogued (Appendix 1).

Description

The Surroundings

The site fronts Bath Road and extends to the north. The buildings are located along the street frontage, with the water tower to the east and the pumping station and ancillary buildings to the west. The reservoirs and tanks occupy the majority of the site, to the north (Fig. 10).

Along the street frontage the boundary is marked by a limestone block wall (Fig. 11), divided into alternating panels of full-height stone wall and lower stone wall surmounted by iron railings, separated by square stone pillars each topped with a concrete capstone. The railings were of wrought iron painted black and surmounted by finials in the shape of a foliate bud. Supporting the railings were scroll shaped backstays (Pl. 1). The entrance, at the western end of the site was marked by a curved section of limestone wall and a pair of pillars built in ashlar style and surmounted by a pediment with dentile decoration on the underside. There was a slightly recessed panel on the pillar (Pl. 2).

The majority of the site is approximately 6m higher than the street frontage and buildings area. This takes the form of an earth bund and is accessed via a set of concrete steps located in the centre of the site between the water tower and the pump house. At the top of the steps are the circular filtration beds, behind which is the covered reservoir. Behind the covered reservoir, the disused reservoir was covered in scrub.

The Water Tower (Figs 12 and 13)

The water tower was located in the south-east corner of the site and was square in plan with four near-identical elevations (Pl. 3). The tower was of brick construction, predominantly laid in English bond in a mixture of red and blue bricks (probably Staffordshire blue bricks), set in cement mortar though this is presumably later pointing of original lime mortar. The red bricks measured 220mm x 106mm x 73mm ($8\frac{5}{8}$ " x $4\frac{9}{16}$ " x $2\frac{7}{8}$ "") and the blue bricks measured 228mm long x 76mm thick (9" x 3"). The blue bricks were laid to create pairs of horizontal bands across the elevations with a central pair set slightly further apart and in-filled with a cross decoration. Within each elevation were three tall lancet openings above which were three oculi with a white stone keystone at each quarter of the circle. The oculi (Pl. 4) and top of the lancets (Pl. 5) were also decorated with blue and red bricks. Within the bottom of the lancets were located doors to access each room, above which was cladding painted brown. Two doorways in the north face had been blocked up. The oculi were filled with brown louvers. On the east and west elevations the central lancet and oculus were built blind (bricked to match the elevation). The entablature of the building (Pl. 6) consisted of rows of projecting and moulded brickwork in red brick with a single band of blue bricks running through it. Above the entablature was the cast iron water tank (Pl. 7).

Internally the building was divided into six equal sized rooms (Fig. 13). Each room originally had individual access from the north or south sides and four of the rooms had further access from the east and west sides. Internally the design of tall lancet openings with oculi above continued on the east-west aligned central wall, linking two rooms together. The pattern created by the use of blue bricks was not continued inside, nor were the stone keystones within the oculi on the internal walls (Pl. 8). The walls were of plain brick; however a horizontal line of stone blocks were used to sit the water tank onto. The floor treatment varied from room to room with concrete floors found in rooms 1, 4 and 5, flagstone floors found in rooms 3 and 6 and a wooden floor in room 2.

Within room 2 were the stairs leading up to the tank at the top of the tower (Pl. 9). These steps were steep and narrow, and of a simple wooden construction supported on cast iron brackets. A number of wooden landing stages were present up the height of the tower, but these were not safe to access.

Within room 3 a c. 2.5m high wall had been built, in stretcher bond, at a later date to sub-divide the room. Graffiti on the wall within this room gives the dates '3 May 1918 on; 24 May [...] off'.

Within room 4 the ground level was lower than the outside resulting in a step down into the room from the entrance in the west wall. The step was formed from an inverted arch and then infilled with bricks. The same step arrangement could be seen in the blocked opening in the north wall (Pl. 10).

Within room 5 was housed part of the machinery (Pl. 11) for the tower and throughout the other rooms were various pipes and meters.

The Pump House (Figs 14 and 15)

The pump house was located in the south-west corner of the site and was roughly square in plan, but with varying roof lines and a small extension to the north. The building was brick built of red brick measuring 230mm x 112mm x 75mm ($9\frac{1}{16}$ " x $4\frac{11}{16}$ " x $2\frac{15}{16}$ ") and laid in Flemish bond. A plinth course was present around the building topped with stone. The roof was covered in slate and the gable ends were in the Dutch style surmounted by stone with a spiked ball at the top.

Within the south façade (Pl. 12) were two Dutch gable ends at the western end. Within each of the gables was an arrow slit type window picked out in stone. A stone string course was also present across the gable ends at the height of the roof line. At both ends of the façade was a rectangular window with a stone block surround and infilled with white glazed bricks. The windows may have been built blind originally. Beside each of the windows was a door with a double curved brick arch above it, supported on a pair of brick pilasters with stone capitals. The western door had a stone keystone and glass above the door. To the east of it was a scar in the brickwork showing where the two walls butted each other. The centre of the façade had a pair of double loading doors raised up above the ground, with a hoist.

The east façade (Pl. 13) was predominantly obscured by the bund and vegetation. Removal of this revealed the Dutch gable end with the parapet extending to cover the valley between the two roofs. A small lean-to extension was present in the centre of the façade. The northernmost block was of plain brick laid in English bond.

The west façade (Pl. 14) contained two blocked up/blind windows and two pairs of double doors, along with a small window towards the north end.

The north façade was not accessible.

Internally the building could be sub-divided into seven rooms (Fig. 15). Entrance was gained through a pair of double doors in the south façade into room 7. The floor was of concrete and the ceiling was timber clad. A small area had been separated off in the north-east corner with a stud partition wall. Machinery was also present within the room. To the east was room 8, accessed via a set of steps up to the raised metal floor. Within room 8 was housed more machinery (Pl. 15). In the south-west corner was a blocked doorway (Pl. 16). To the north of room 7 was room 9, a large double height room with two rows of skylights in the roof, which was supported by metal trusses (Pl. 17). The floor was covered in red quarry tiles and the walls were a combination of painted brickwork on the upper half and tiled on the lower half with white glazed tiles. A line of brown tiles decorated it with a line of moulded brown tiles along the top. The room housed more machinery, including a hoist mechanism that could track along the length of the building, built by Appleby Frodingham steel company (Pl. 18). The I-beam across the room was built by Herbert Morris of Loughborough, crane manufacturers. In the north-west corner was a small store cupboard (room 10). Room 11 was located to the west of room 10. It was sub-divided by a low wall, with the southernmost part having no access on the day. The roofline at the southern end was lower than the majority of it (Pl. 19). A pair of double doors was present in the western façade and a blind window. To the north was a toilet (room 12). To the north of room 12 was a further room which had no internal access and was the former sub-station (Pl. 20).

Aspects of the original building are still present. Room 8 forms part of the pump house that was on the original designs (Fig. 3). It is possible that the westernmost block is contained within part of room 11, but it is not possible to see any evidence of this in the brickwork. It is likely that the north-east corner of room 9 is the same as that seen on the 1853 plans (Fig. 4). Room 7 forms the extension seen on the 1879 Ordnance Survey map (Fig. 5). By 1910 (Fig. 6), the western block, incorporating room 11 had been extended. This may have occurred in more than one stage based on the change of height within the roof line, although it may have been to tie in with the existing gable end.

Ancillary Buildings

To the rear (north-west) of the pumping station were two ancillary buildings. The larger building was a substation (Fig. 16) with a smaller building tacked onto the rear. The substation was of red brick construction

bonded in (pointed) cement mortar (Pl. 21). The bonding was a variation of garden wall bond, where there were several stretchers between each of the headers and the bricks measured 230mm x 106mm x 68mm ($9\frac{1}{16}$ " x $4\frac{3}{16}$ " x $2\frac{11}{16}$ "). Above the windows and doors were concrete lintels. The roof was flat and constructed of concrete lintels. A small parapet was present on the north and south walls constructed of line of proud stretchers above which was a soldier course. Internally (Pl. 22) the building was a simple rectangle with access in the south face via a pair of double iron doors, and two windows in the west wall and one in the north wall. The floor was concrete, with a gully running round the edge, presumably for pipes and cables.

To the rear of the building was a low, single-storey building in a dilapidated state (Pl. 23). It was subdivided into two rooms, each with its own access. The bricks were laid in stretcher bond.

The Filtration Beds and Reservoirs

The filtration beds and reservoirs were located within an earthen bund, accessed by a set of steps from the south-central part of the site, between the pump house and water tower (Pl. 24). The steps were of brick construction overlaid by a stone slab and held together by cement mortar. The bricks measured 230mm x 106mm x 72mm ($9\frac{1}{16}$ " x $4\frac{3}{16}$ " x $2\frac{13}{16}$ "). Down the western side of the steps was a steel rail, which was probably a later addition.

The filtration beds were at the southernmost end of the bund and consisted of a covered circular tank which was covered in scrub and inaccessible (Pl. 25). Further to the north was a larger circular tank of brick construction and whitewashed (Pl. 26). No access was possible, thus the type of brick bonding was not discernible. Within the centre of the tank was a brick pillar. Around the edges were various cast iron inlet and outlet pipes. A set of iron ladder rungs were laid into the wall on the southern side for access. To the north of the main tank was a further small, brick built, covered tank.

Behind the filtration beds was the rectangular, covered reservoir (Fig. 17, Pl. 27). This was completely grassed over and no detail of the actual reservoir could be seen. Around the edges were brick built box structures. Architectural plans suggest that the reservoir had approximately 45° sloping sides and a flat base. The proposed cover was constructed of iron, supported on columns and girders. The signature and date suggest that the cover was constructed around 1933.

At the rear of the site (northern end) was the disused reservoir (Pl. 28). It was rectangular in shape, except for the north-west corner where it followed the line of the site boundary and railway line. It consisted of sloped sides at approximately a 45° angle and a flat base. The entire reservoir was overgrown with scrub.

Conclusion

Much of the site is as it was designed in 1850 and mapped in 1853. The pump house has undergone a number of changes from its initial design in 1850 through to the first mapping of the site in 1853, with subsequent extensions prior to 1879 and 1910. The water tower did not feature in the initial designs for the site but was built at some point between 1853 and 1879 in the gothic style. Probably around 1930, a new substation and lean to were constructed to the rear of the pump house.

References

NPPF 2012, *National Planning Policy Framework*, Dept Communities and Local Govt, London
RCHME, 1996, *Recording Historic Buildings: a descriptive specification*, 3rd edn, Roy Comm Hist Monuments (England), London

APPENDIX 1: Photographic Catalogue

A .Digital

<i>Cat. No.</i>	<i>Scales</i>	<i>Location</i>	<i>Direction</i>	<i>Description</i>
1	1x1, 1x2	Ext	NW	General view (East end)
2	1x2	Ext	NW	General view (West end)
3	1x1, 1x2	Ext	NE	Oblique view
4	1x1, 1x2	Ext	ENE	General view
5	1x2	Ext	SE	General view
6	1x2	Ext	SSE	General view
7	1x1, 1x2	Room 1	N	To Room 2
8	1x1, 1x2	Room 1	NE	General view
9	1x1, 1x2	Room 1	SW	General view
10	1x1, 1x2	Room 2	S	To Room 1
11	1x1, 1x2	Room 2	E	Blocked window
12	1x1, 1x2	Room 2	N	General view including trough
13	1x1, 1x2	Room 2	NW	Stairs
14	1x1, 1x2	Room 2	W	Alcove
15	-	Room 2	E	Ceiling joists
16	1x1, 1x2	Room 2	NE	Trough
17	1x1, 1x2	Room 3	N	General view
18	-	Room 3	N	Upper half of wall
19	-	Room 3	NW	Upper half of wall, oblique
20	1x1, 1x2	Room 3	SW	Pipework
21	1x1, 1x2	Room 3	N	window/blocked doorway
22	-	Room 3	N	Upper part of wall
23	1x1, 1x2	Room 4	N	To blocked door
24	-	Room 4	N	Upper part of door
25	-	Room 4	E	Wall
26	1x1, 1x2	Room 4	W	Pipes
27	1x1	Room 5	N	Equipment
28	-	Room 5	N	Upstairs
29	1x1, 1x0.3	Room 5	E	Caversham booster flow meter
30	1x1, 1x2	Room 6	N	General view
31	1x1, 1x2	Room 6	S	To Room 5 and equip
32	-	Ext	NE	Detail around door
33	1x1, 1x2	Ext	N	Steps to reservoir
34	-	Ext	NW	Filtration bed, through fence
35	-	Ext	NW	Filtration bed, over fence
36	-	Ext	S	Filtration bed, covered
37	-	Ext	N	Circle No. 3
38	-	Ext	SE	Circular filtration bed
39	-	Ext	NW	Covered reservoir
40	-	Ext	NW	Disused reservoir
41	-	Ext	SE	To water tower
42	-	Ext	S	To pump house
43	-	Ext	SW	Pump house
44	1x1, 1x2	Ext	NW	Pump house
45	1x2	Ext	W	Pump house
46	1x1, 1x2	Room 7	N	General view
47	-	Room 8	N	Pumping equipment
48	-	Room 8	W	Alcove
49	-	Room 8	S	Pumping equipment
50	1x1, 1x2	Room 9	NW	To equipment and hoist
51	1x2	Room 9	E	Pressure monitors
52	-	Room 9	N	Flow meter
53	-	Room 9	N	To hoist
54	1x1, 1x2	Room 10	N	General view
55	1x1, 1x2	Room 11	S	General view
56	-	Room 11	NW	General view to window
57	1x1, 1x2	Room 12	N	General view to toilet
58	1x2	Ext	N	Pump house
59	1x1, 1x2	Ext	NE	Pump house
60	1x2	Ext	NE	Pumphouse
61	1x1, 1x2	Ext	N	Substation
62	1x1, 1x2	Ext	E	Pump house extension
63	1x1, 1x2	Room 13	E	Substation
64	1x1, 1x2	Room 13	N	Substation
65	1x2	Ext	NE	Substation and lean to
66	1x2	Ext	N	Entrance pillar
67	-	Ext	NE	Curved boundary wall

<i>Cat. No.</i>	<i>Scales</i>	<i>Location</i>	<i>Direction</i>	<i>Description</i>
68	1x1, 1x2	Ext	N	Boundary wall
69	1x1, 1x2	Ext	NNE	Milestone
70	-	Ext	NE	Oblique view of boundary wall
71	-	Ext	N	Wall and water tower
72	-	Ext	W	Watertower
73	2x1	Ext	NE	Roof detail
74	2x1	Ext	SW	Roof detail
75	-	Ext	W	To pump house
76	1x1	Ext	NE	Brick detail
77	1x1	Ext	NE	Detail of oculus
78	-	Ext	S	Through an oculus
79	1x1, 1x2	Ext	NE	Detail of lancets
80	-	Ext	S	Through a lancet
81	-	Room 22	NE	Internal roof detail
82	-	Room 19	E	Internal oculus detail
83	-	Room 25	NE	Internal roof detail
84	-	Room 25	SW	Step and roof access panel
85	-	Room 14	W	Internal lancet detail

B. Colour Prints

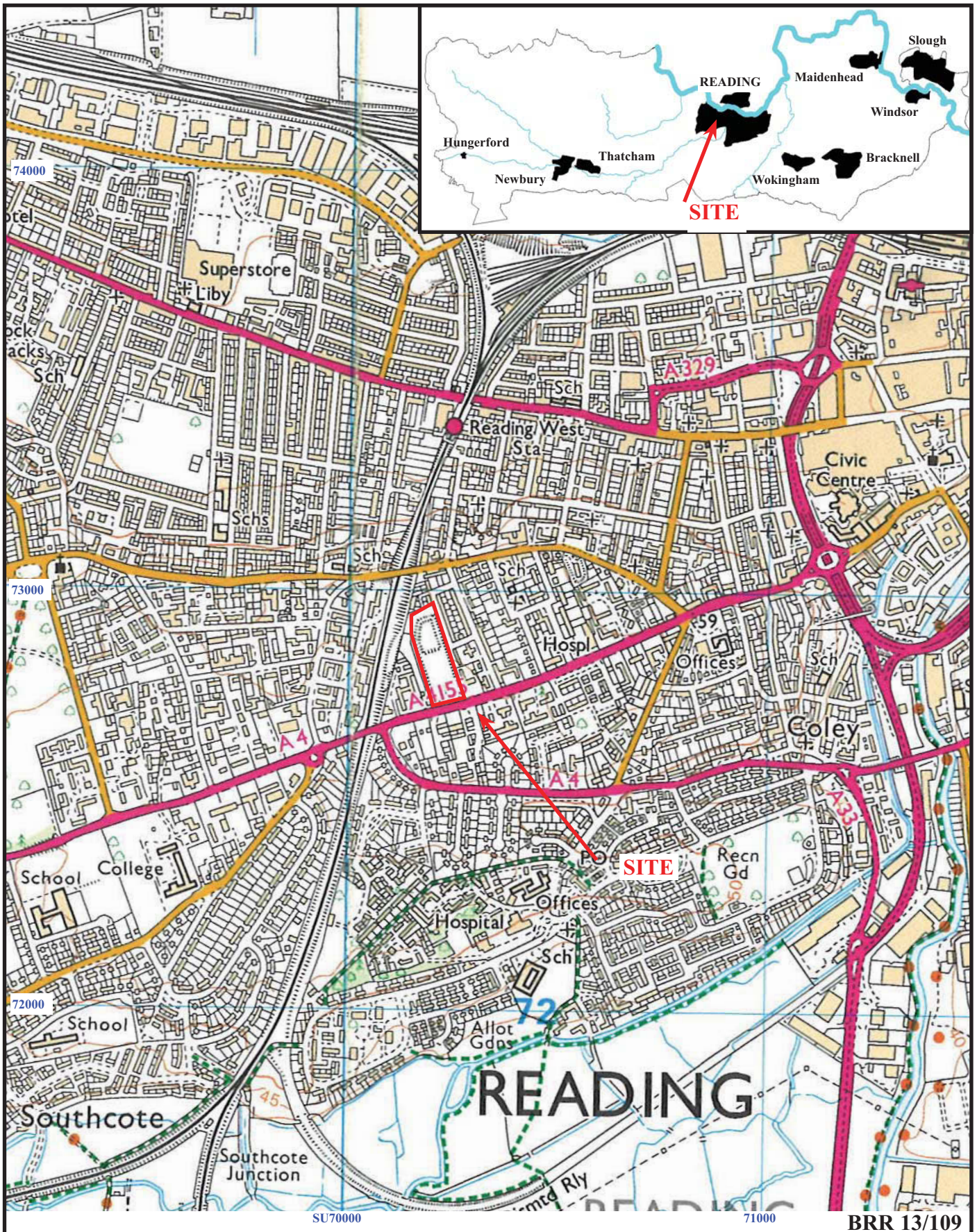
<i>Cat. no</i>	<i>Scales</i>	<i>Location</i>	<i>Direction</i>	<i>Description</i>
1	1x1, 1x2	Ext	NW	General view (East end)
2	1x2	Ext	NW	General view (West end)
3	1x1, 1x2	Ext	NE	Oblique view
4	1x1, 1x2	Ext	ENE	General view
5	1x2	Ext	SE	General view
6	1x2	Ext	SSE	General view
7	1x1, 1x2	Room 1	N	To Room 2
8	1x1, 1x2	Room 1	NE	General view
9	1x1, 1x2	Room 1	SW	General view
10	1x1, 1x2	Room 2	S	To Room 1
11	1x1, 1x2	Room 2	E	Blocked window
12	1x1, 1x2	Room 2	N	General view including trough
13	1x1, 1x2	Room 2	NW	Stairs
14	1x1, 1x2	Room 2	W	Alcove
15	-	Room 2	E	Ceiling joists
16	1x1, 1x2	Room 2	NE	Trough
17	1x1, 1x2	Room 3	N	General view
18	-	Room 3	N	Upper half of wall
19	-	Room 3	NW	Upper half of wall, oblique
20	1x1, 1x2	Room 3	SW	Pipework
21	1x1, 1x2	Room 3	N	window/blocked doorway
22	-	Room 3	N	Upper part of wall
23	1x1, 1x2	Room 4	N	To blocked door
24	-	Room 4	N	Upper part of door
25	-	Room 4	E	Wall
26	1x1, 1x2	Room 4	W	Pipes
27	1x1	Room 5	N	Equipment
28	-	Room 5	N	Upstairs
29	1x1, 1x0.3	Room 5	E	Caversham booster flow meter
30	1x1, 1x2	Room 6	N	General view
31	1x1, 1x2	Room 6	S	To Room 5 and equip
32	-	Ext	NE	Detail around door
33	1x1, 1x2	Ext	N	Steps to reservoir
34	-	Ext	NW	Filtration bed, through fence
35	-	Ext	NW	Filtration bed, over fence
36	-	Ext	S	Filtration bed, covered
37	-	Ext	N	Circle No. 3
38	-	Ext	SE	Circular filtration bed
39	-	Ext	NW	Covered reservoir
40	-	Ext	NW	Disused reservoir
41	-	Ext	SE	To water tower
42	-	Ext	S	To pump house
43	-	Ext	SW	Pump house
44	1x1, 1x2	Ext	NW	Pump house
45	1x2	Ext	W	Pump house
46	1x1, 1x2	Room 7	N	General view
47	-	Room 8	N	Pumping equipment

<i>Cat. no</i>	<i>Scales</i>	<i>Location</i>	<i>Direction</i>	<i>Description</i>
48	-	Room 8	W	Alcove
49	-	Room 8	S	Pumping equipment
50	1x1, 1x2	Room 9	NW	To equipment and hoist
51	1x2	Room 9	E	Pressure monitors
52	-	Room 9	N	Flow meter
53	-	Room 9	N	To hoist
54	1x1, 1x2	Room 10	N	General view
55	1x1, 1x2	Room 11	S	General view
56	-	Room 11	NW	General view to window
57	1x1, 1x2	Room 12	N	General view to toilet
58	1x2	Ext	N	Pump house
59	1x1, 1x2	Ext	NE	Pump house
60	1x2	Ext	NE	Pumphouse
61	1x1, 1x2	Ext	N	Substation
62	1x1, 1x2	Ext	E	Pump house extension
63	1x1, 1x2	Room 13	E	Substation
64	1x1, 1x2	Room 13	N	Substation
65	1x2	Ext	NE	Substation and lean to
66	1x2	Ext	N	Entrance pillar
67	-	Ext	NE	Curved boundary wall
68	1x1, 1x2	Ext	N	Boundary wall
69	1x1, 1x2	Ext	NNE	Milestone
70	-	Ext	NE	Oblique view of boundary wall
71	-	Ext	N	Wall and water tower
72	-	Ext	W	Watertower
73	2x1	Ext	NE	Roof detail
74	2x1	Ext	SW	Roof detail
75	-	Ext	W	To pump house
76	1x1	Ext	NE	Brick detail
77	1x1	Ext	NE	Detail of oculus
78	-	Ext	S	Through an oculus
79	1x1, 1x2	Ext	NE	Detail of lancets
80	-	Ext	S	Through a lancet
81	-	Room 22	NE	Internal roof detail
82	-	Room 19	E	Internal oculus detail
83	-	Room 25	NE	Internal roof detail
84	-	Room 25	SW	Step and roof access panel
85	-	Room 14	W	Internal lancet detail

C. Monochrome Images

<i>Cat. No.</i>	<i>Scales</i>	<i>Location</i>	<i>Direction</i>	<i>Description</i>
1	1x1, 1x2	Ext	NW	General view (East end)
2	1x2	Ext	NW	General view (West end)
3	1x1, 1x2	Ext	NE	Oblique view
4	1x1, 1x2	Ext	ENE	General view
5	1x2	Ext	SE	General view
6	1x2	Ext	SSE	General view
7	1x1, 1x2	Room 1	N	To Room 2
8	1x1, 1x2	Room 1	NE	General view
9	1x1, 1x2	Room 1	SW	General view
10	1x1, 1x2	Room 2	S	To Room 1
11	1x1, 1x2	Room 2	E	Blocked window
12	1x1, 1x2	Room 2	N	General view including trough
13	1x1, 1x2	Room 2	NW	Stairs
14	1x1, 1x2	Room 2	W	Alcove
15	-	Room 2	E	Ceiling joists
16	1x1, 1x2	Room 2	NE	Trough
17	1x1, 1x2	Room 3	N	General view
18	-	Room 3	N	Upper half of wall
19	-	Room 3	NW	Upper half of wall, oblique
20	1x1, 1x2	Room 3	SW	Pipework
21	1x1, 1x2	Room 3	N	window/blocked doorway
22	-	Room 3	N	Upper part of wall
23	1x1, 1x2	Room 4	N	To blocked door
24	-	Room 4	N	Upper part of door
25	-	Room 4	E	Wall
26	1x1, 1x2	Room 4	W	Pipes
27	1x1	Room 5	N	Equipment

<i>Cat. No.</i>	<i>Scales</i>	<i>Location</i>	<i>Direction</i>	<i>Description</i>
28	-	Room 5	N	Upstairs
29	1x1, 1x0.3	Room 5	E	Caversham booster flow meter
30	1x1, 1x2	Room 6	N	General view
31	1x1, 1x2	Room 6	S	To Room 5 and equip
32	-	Ext	NE	Detail around door
33	1x1, 1x2	Ext	N	Steps to reservoir
34	-	Ext	NW	Filtration bed, through fence
35	-	Ext	NW	Filtration bed, over fence
36	-	Ext	S	Filtration bed, covered
37	-	Ext	N	Circle No. 3
38	-	Ext	SE	Circular filtration bed
39	-	Ext	NW	Covered reservoir
40	-	Ext	NW	Disused reservoir
41	-	Ext	SE	To water tower
42	-	Ext	S	To pump house
43	-	Ext	SW	Pump house
44	1x1, 1x2	Ext	NW	Pump house
45	1x2	Ext	W	Pump house
46	1x1, 1x2	Room 7	N	General view
47	-	Room 8	N	Pumping equipment
48	-	Room 8	W	Alcove
49	-	Room 8	S	Pumping equipment
50	1x1, 1x2	Room 9	NW	To equipment and hoist
51	1x2	Room 9	E	Pressure monitors
52	-	Room 9	N	Flow meter
53	-	Room 9	N	To hoist
54	1x1, 1x2	Room 10	N	General view
55	1x1, 1x2	Room 11	S	General view
56	-	Room 11	NW	General view to window
57	1x1, 1x2	Room 12	N	General view to toilet
58	1x2	Ext	N	Pump house
59	1x1, 1x2	Ext	NE	Pump house
60	1x2	Ext	NE	Pumphouse
61	1x1, 1x2	Ext	N	Substation
62	1x1, 1x2	Ext	E	Pump house extension
63	1x1, 1x2	Room 13	E	Substation
64	1x1, 1x2	Room 13	N	Substation
65	1x2	Ext	NE	Substation and lean to
66	1x2	Ext	N	Entrance pillar
67	-	Ext	NE	Curved boundary wall
68	1x1, 1x2	Ext	N	Boundary wall
69	1x1, 1x2	Ext	NNE	Milestone
70	-	Ext	NE	Oblique view of boundary wall
71	-	Ext	N	Wall and water tower
72	-	Ext	W	Watertower
73	2x1	Ext	NE	Roof detail
74	2x1	Ext	SW	Roof detail
75	-	Ext	W	To pump house
76	1x1	Ext	NE	Brick detail
77	1x1	Ext	NE	Detail of oculus
78	-	Ext	S	Through an oculus
79	1x1, 1x2	Ext	NE	Detail of lancets
80	-	Ext	S	Through a lancet
81	-	Room 22	NE	Internal roof detail
82	-	Room 19	E	Internal oculus detail
83	-	Room 25	NE	Internal roof detail
84	-	Room 25	SW	Step and roof access panel
85	-	Room 14	W	Internal lancet detail

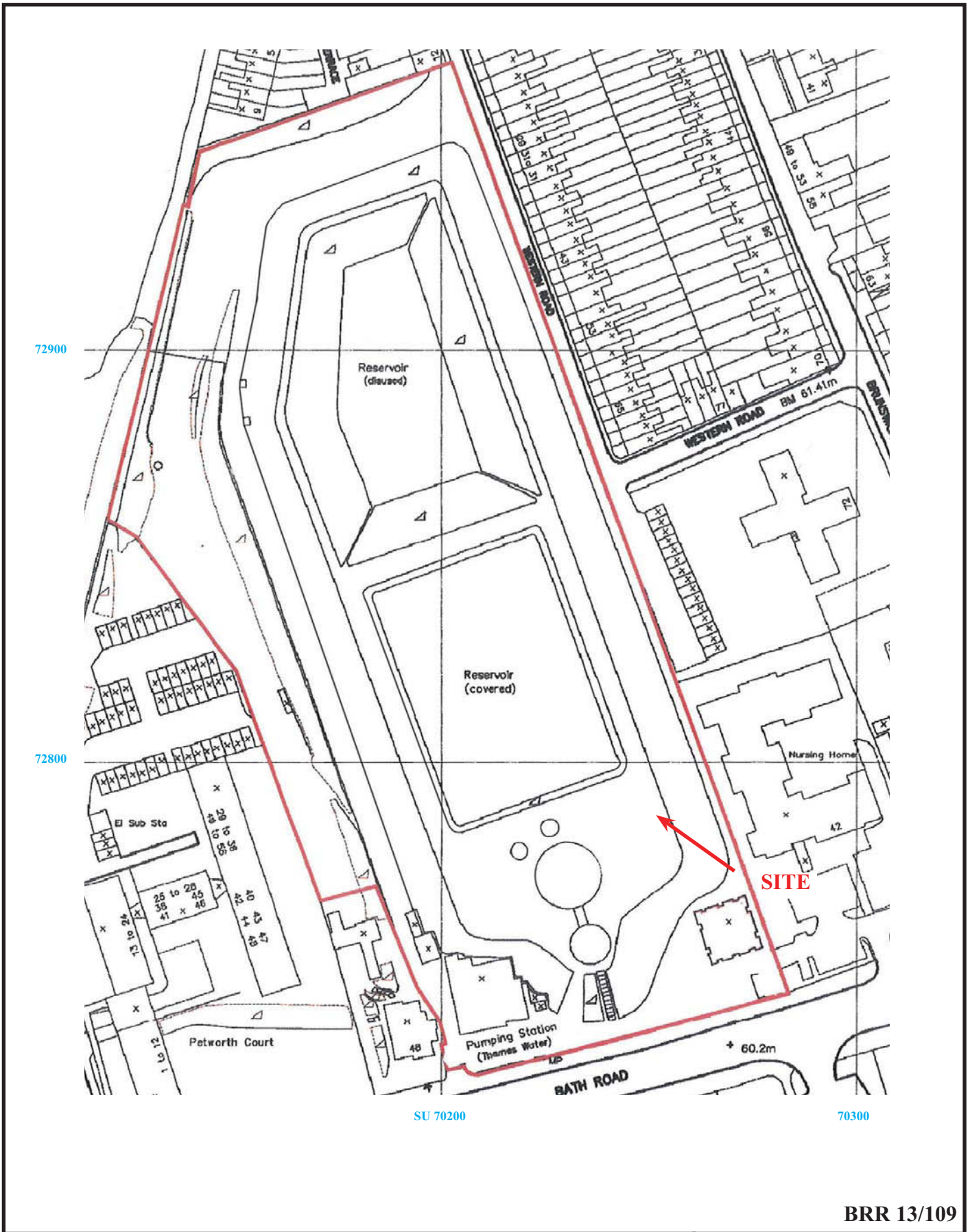


**Bath Road Reservoirs, Reading,
Berkshire, 2013
Building Recording**

Figure 1. Location of site within Reading and Berkshire.

Reproduced from Ordnance Survey Explorer 159 at 1:12500
Ordnance Survey Licence 100025880

THAMES VALLEY
ARCHAEOLOGICAL
SERVICES



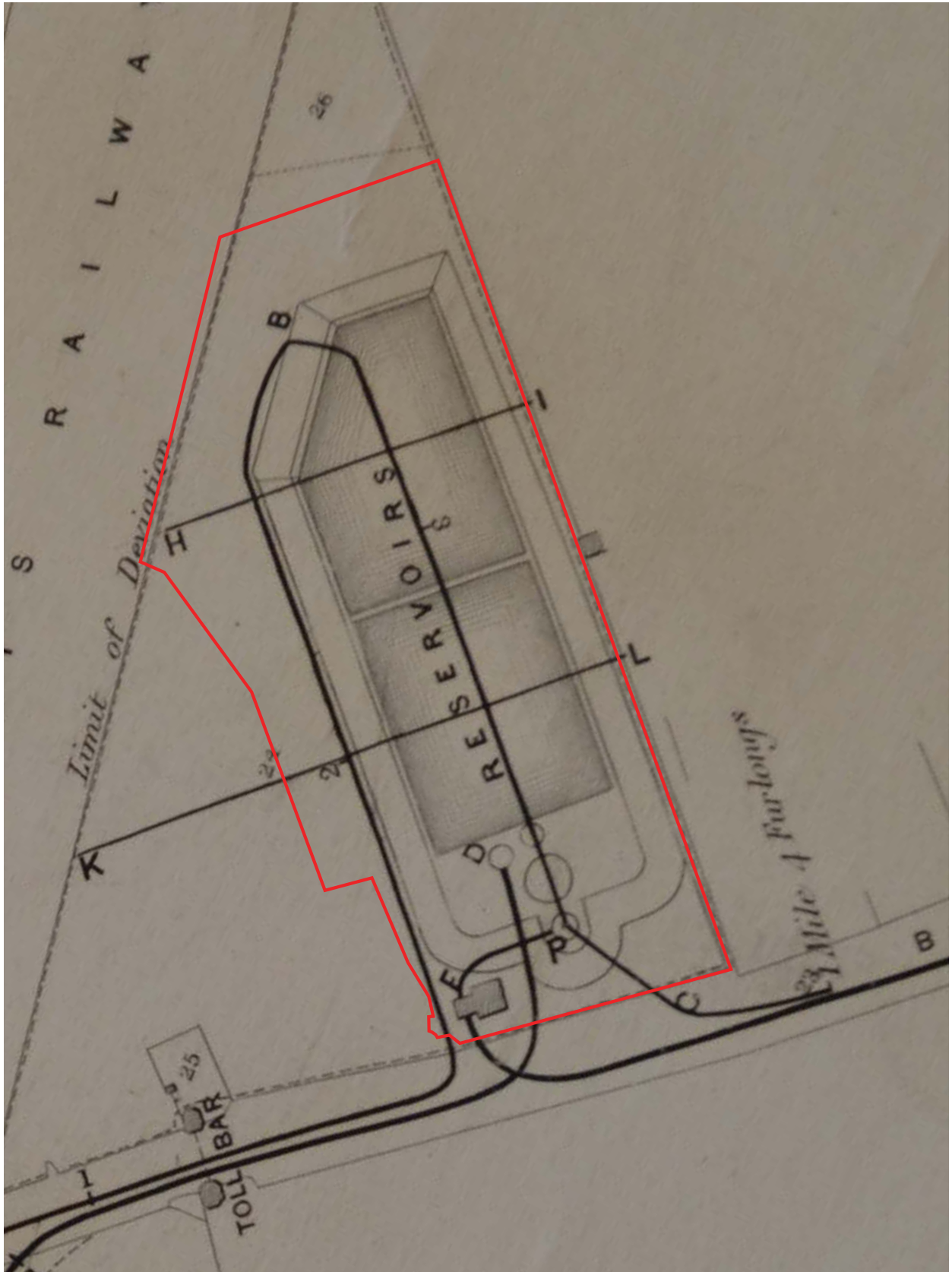
BRR 13/109



**Bath Road Reservoirs, Reading,
Berkshire, 2013
Building Recording**
Figure 2. Detailed location of site off Bath Road.

Reproduced from Ordnance Survey Mapping under licence.
Crown copyright reserved. Scale 1:1250

THAMES VALLEY
ARCHAEOLOGICAL
SERVICES

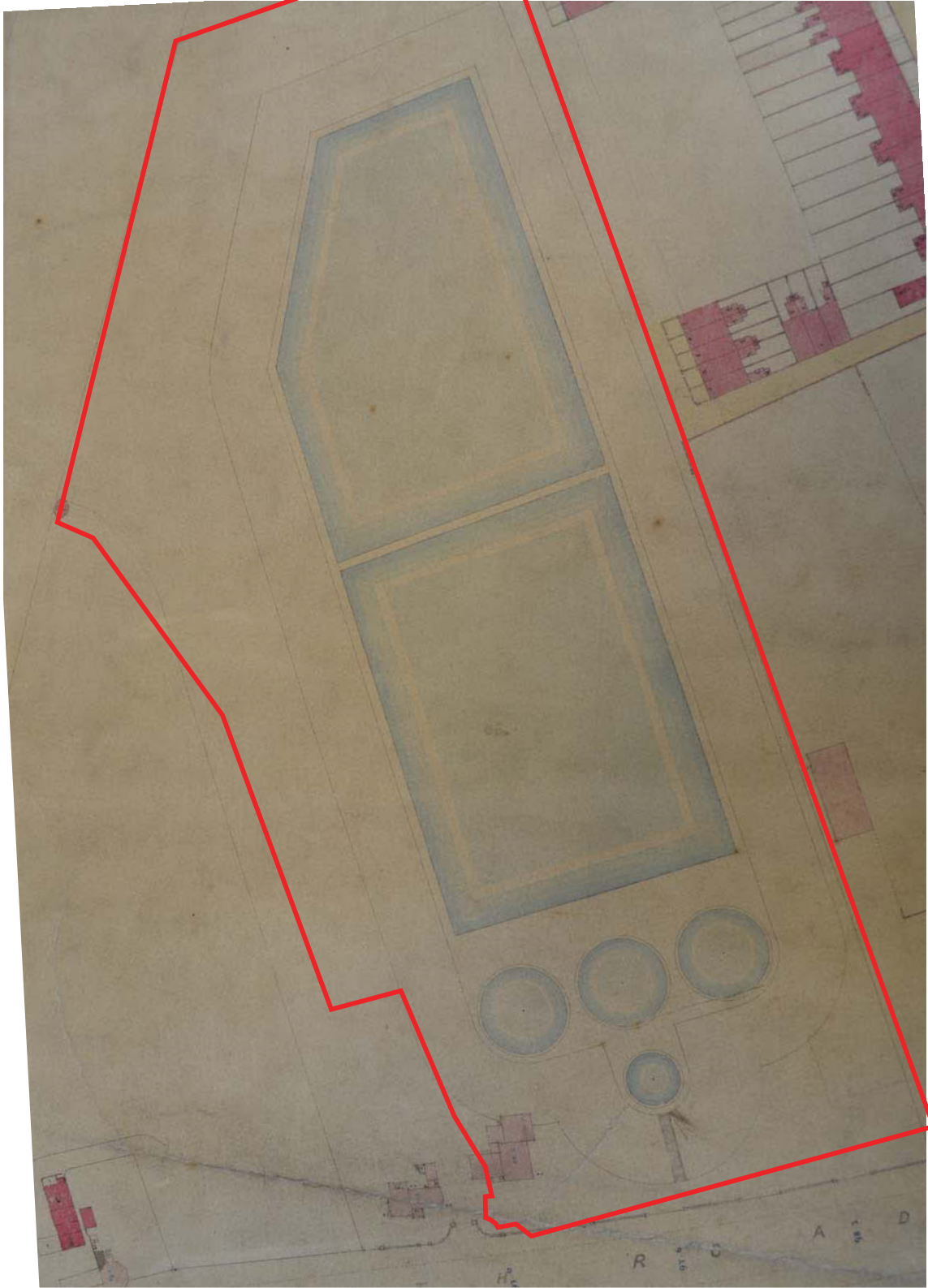


BRR 13/109



**Bath Road Reservoirs, Reading,
Berkshire, 2013
Building Recording**
Figure 3. Original Plan of Reservoir site, 1850

THAMES VALLEY
ARCHAEOLOGICAL
SERVICES

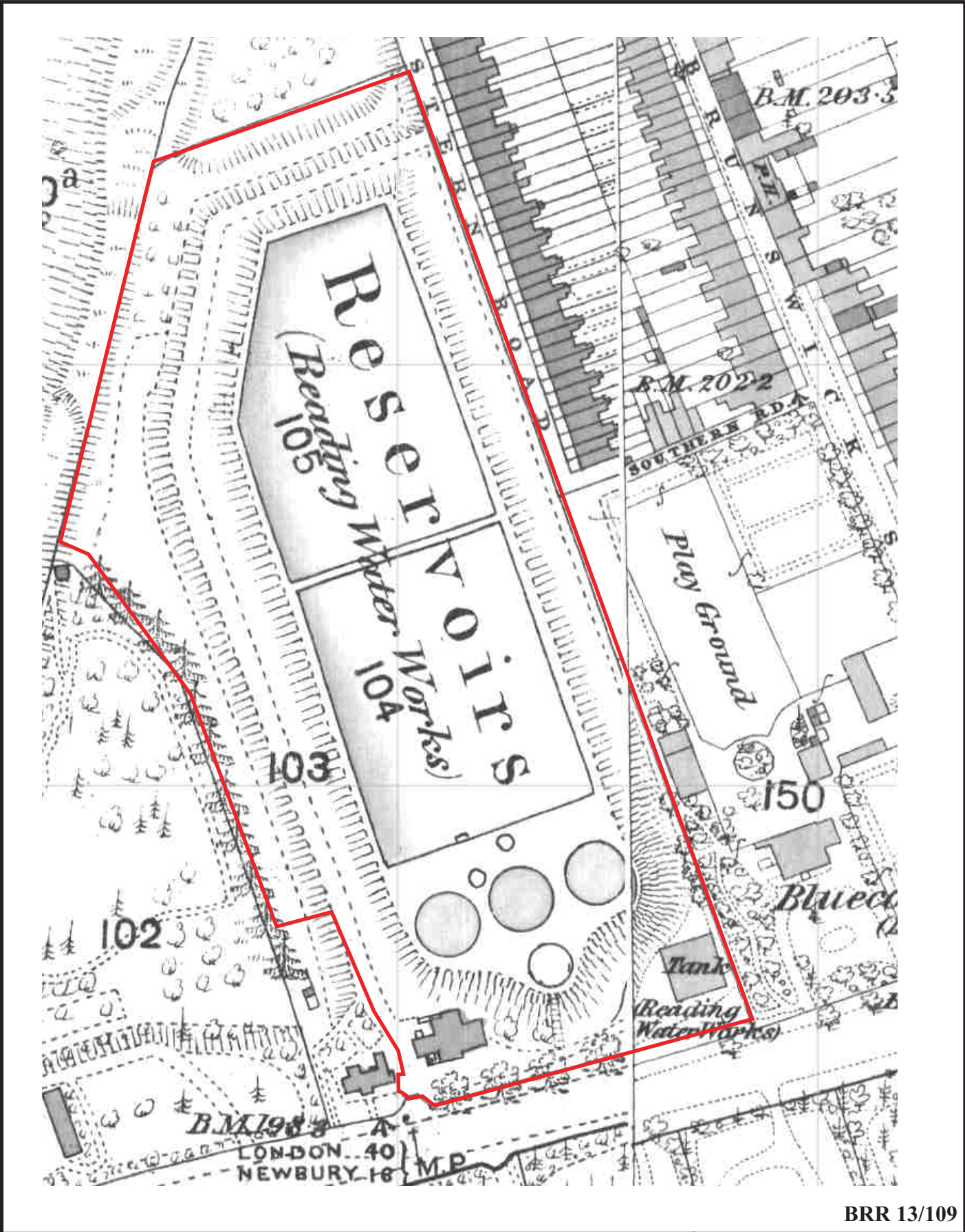


BRR 13/109



**Bath Road Reservoirs, Reading,
Berkshire, 2013
Building Recording**
Figure 4. Plan of Reservoir site, 1853

THAMES VALLEY
ARCHAEOLOGICAL
SERVICES



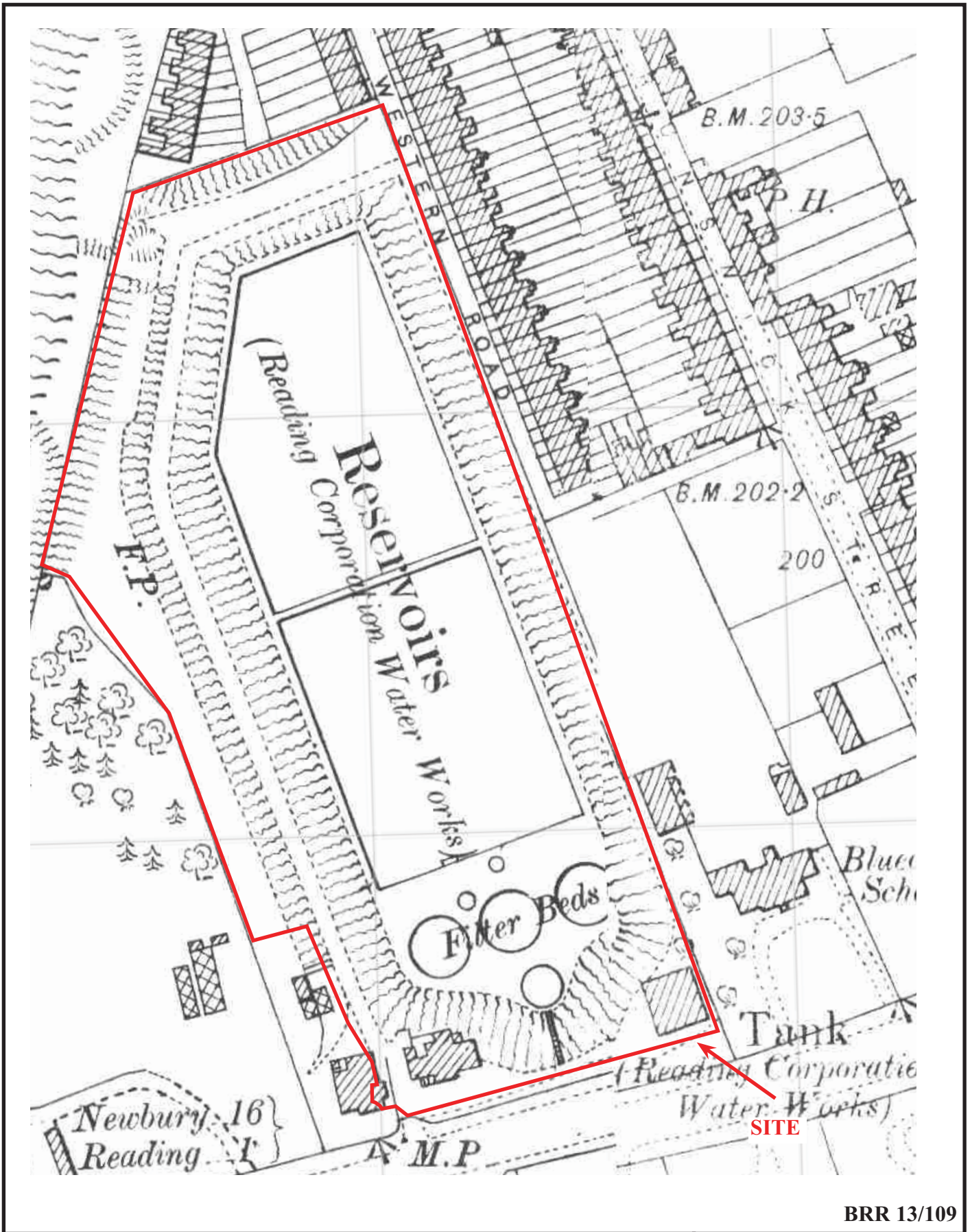
BRR 13/109



**Bath Road Reservoirs, Reading,
Berkshire, 2013
Building Recording**

Figure 5. First Edition Ordnance Survey, 1879-1881

THAMES VALLEY
ARCHAEOLOGICAL
SERVICES

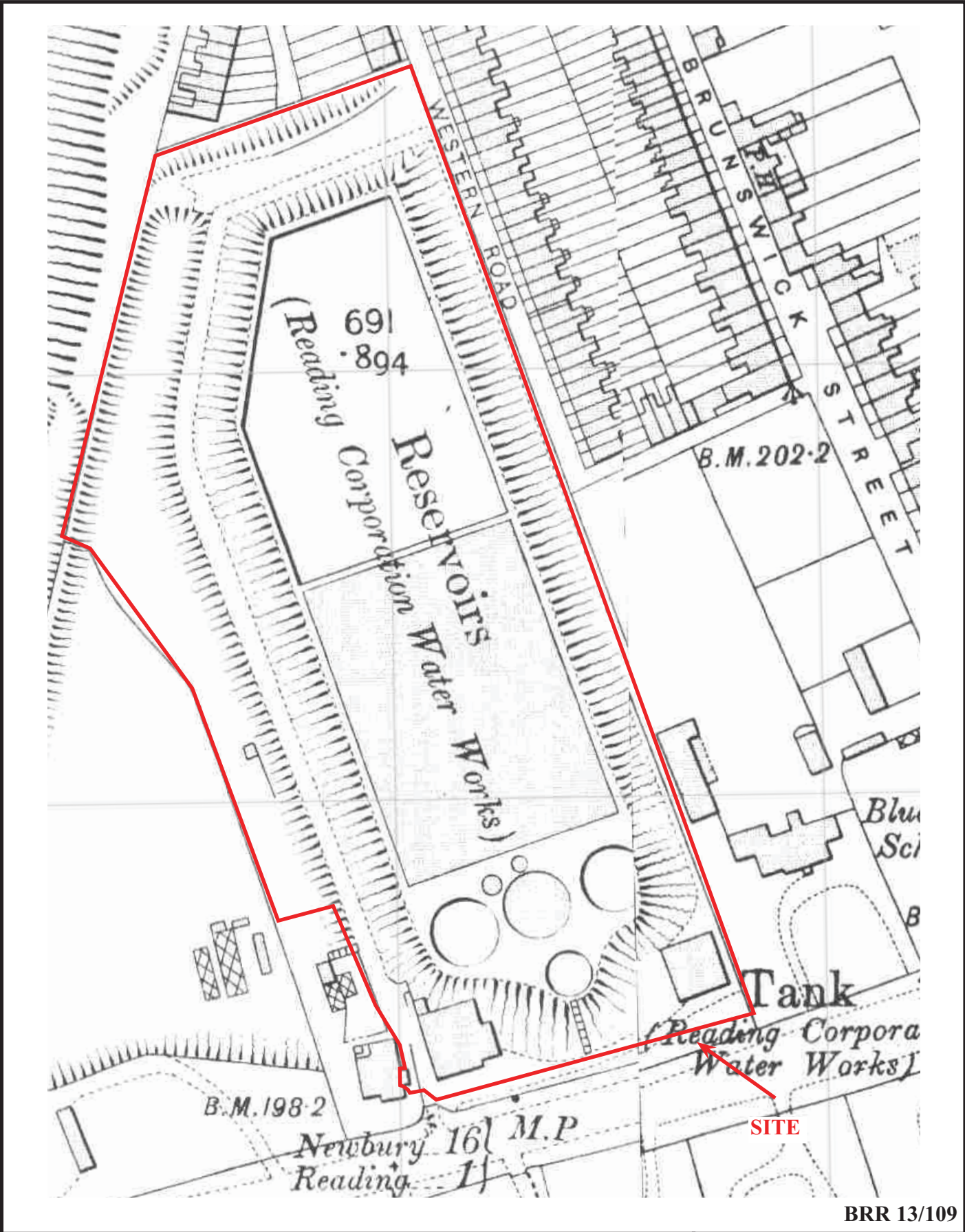


BRR 13/109

**Bath Road Reservoirs, Reading,
Berkshire, 2013
Building Recording**

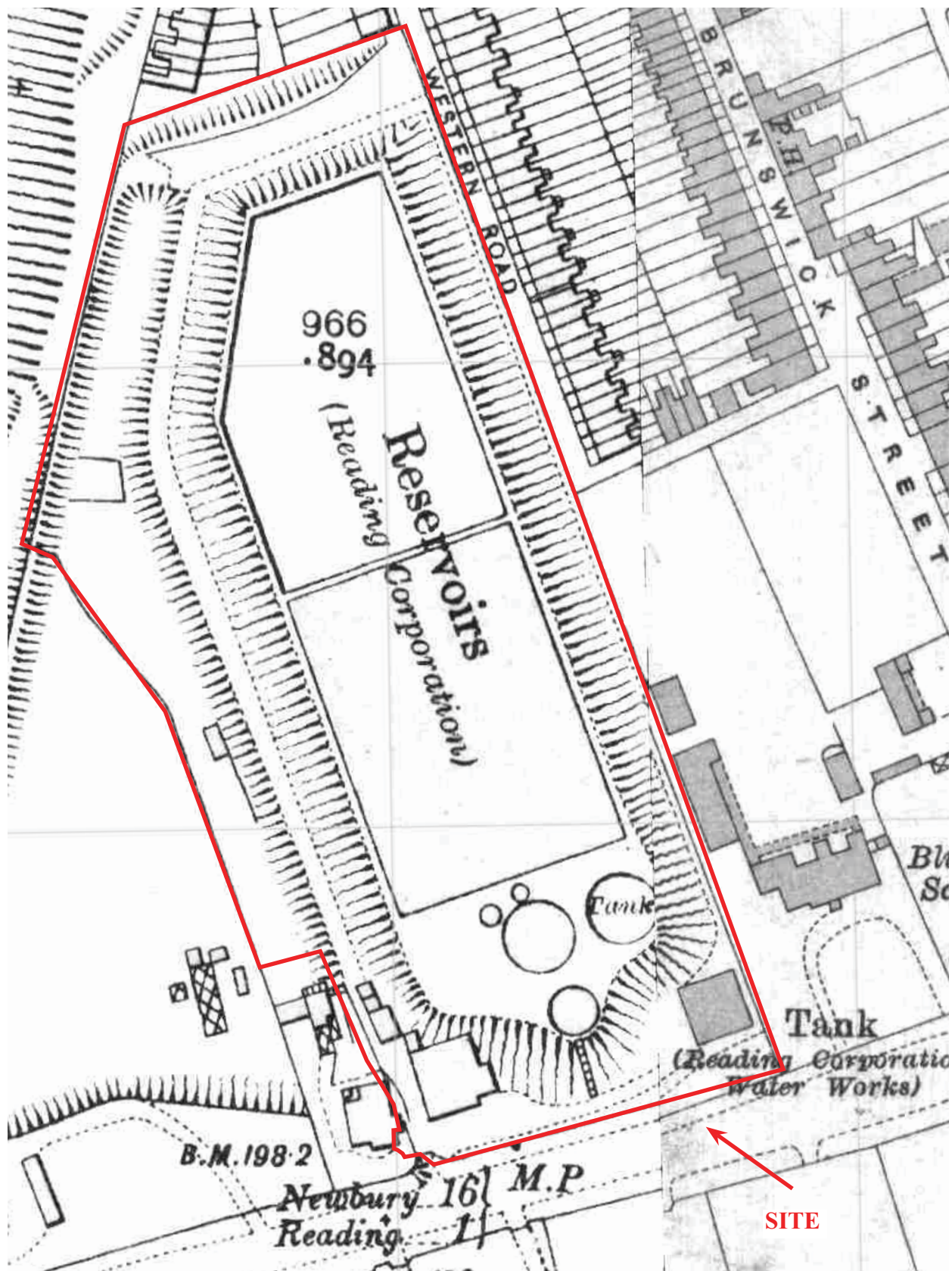
Figure 6. Second Edition Ordnance Survey, 1899-1900

THAMES VALLEY
ARCHAEOLOGICAL
SERVICES



**Bath Road Reservoirs, Reading,
Berkshire, 2013
Building Recording**

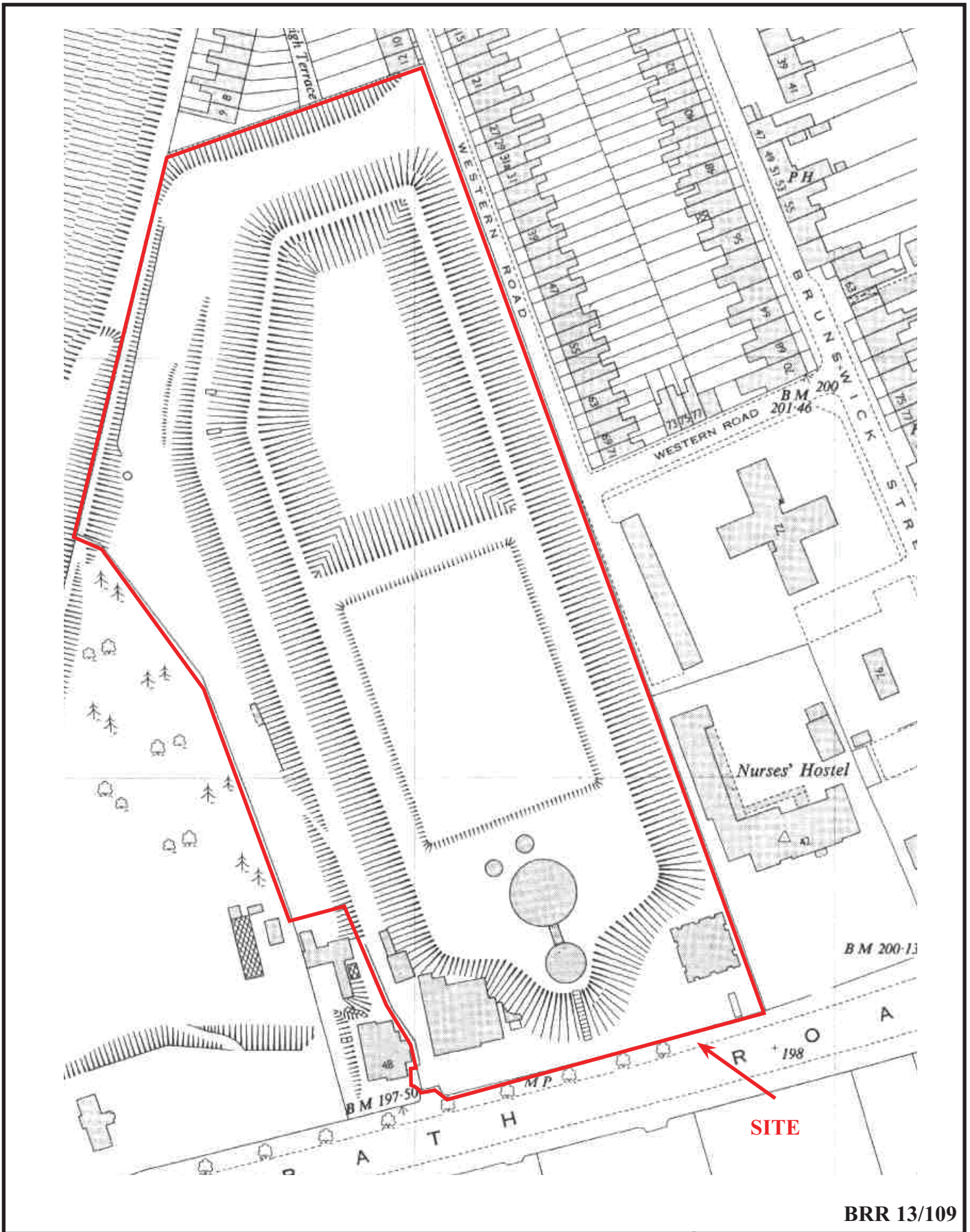
Figure 7. Third Edition Ordnance Survey, 1911-1912



BRR 13/109



Bath Road Reservoirs, Reading,
Berkshire, 2013
Building Recording
Figure 8. Ordnance Survey, 1931-1932

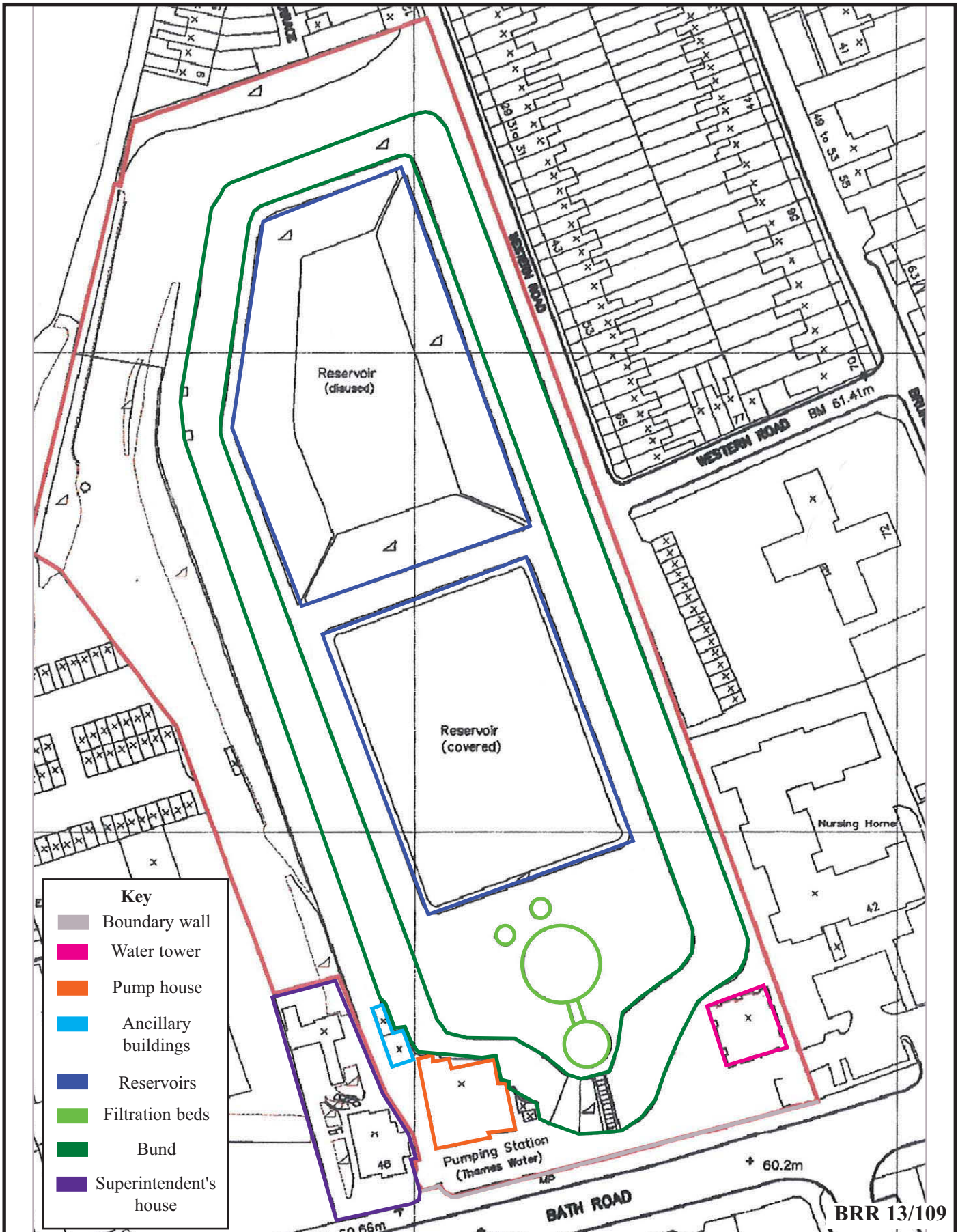


BRR 13/109



**Bath Road Reservoirs, Reading,
Berkshire, 2013
Building Recording**
Figure 9. Ordnance Survey, 1958 -1960.



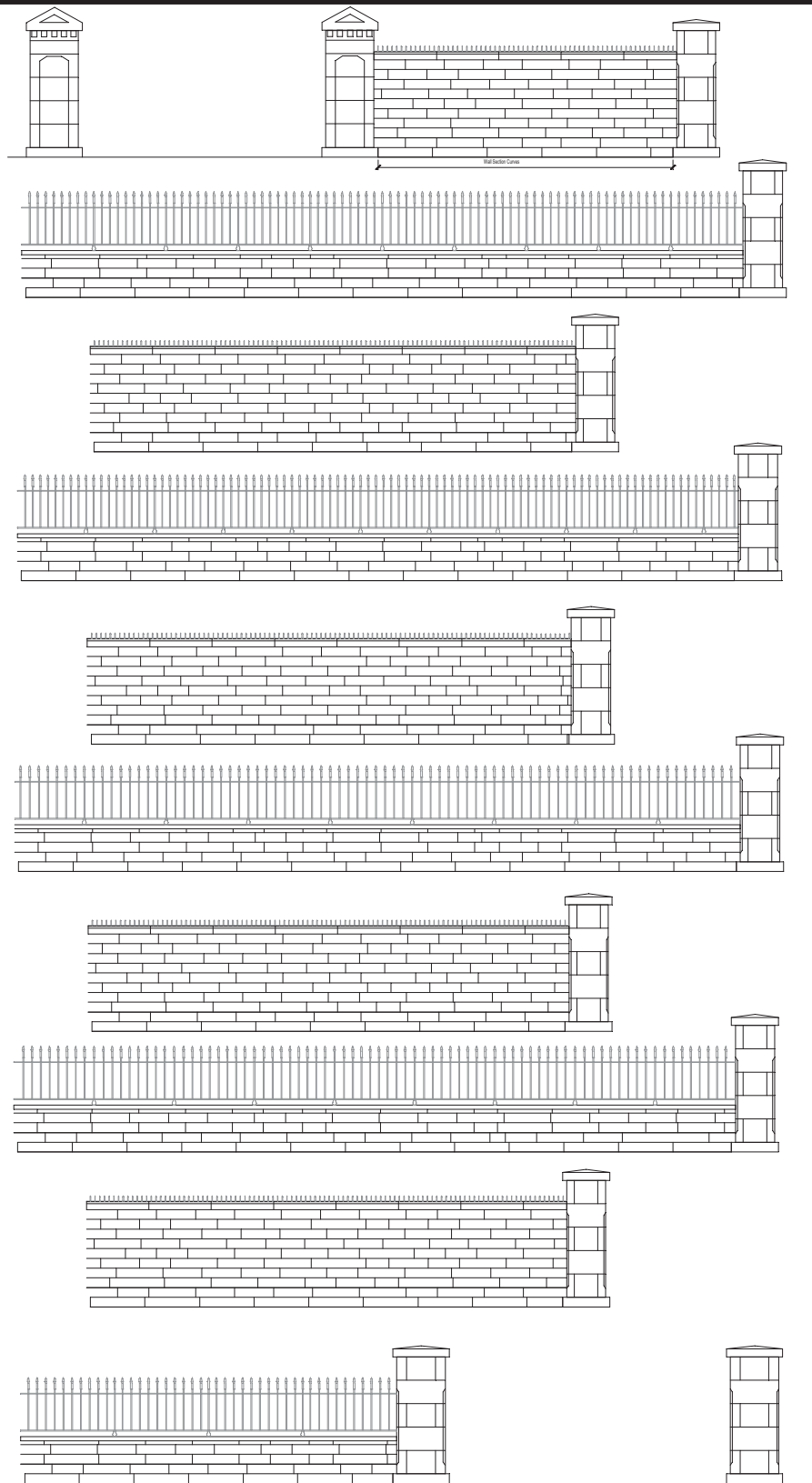


**Bath Road Reservoirs, Reading,
Berkshire, 2013**

Building Recording

Figure 10. Detailed location of site off Bath Road.

Reproduced from Ordnance Survey Digital Mapping under licence.
Crown copyright reserved.



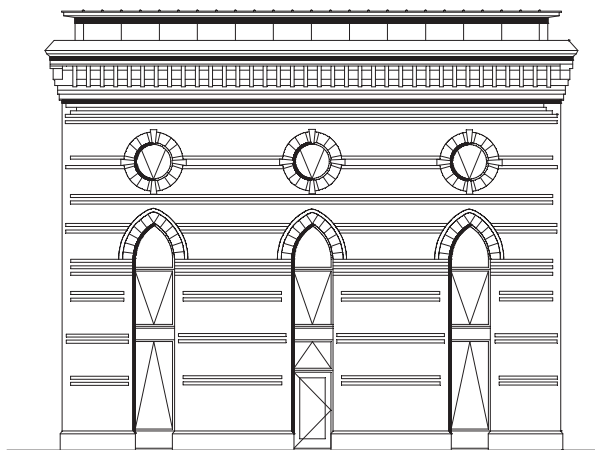
BRR13/109

**Bath Road Reservoirs,
Reading, Berkshire, 2013
Building Recording**

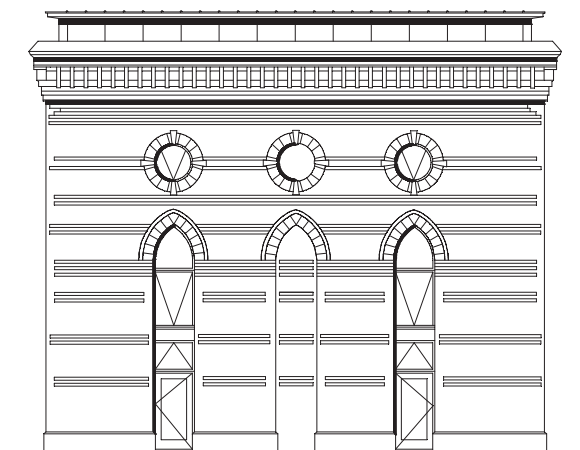
Figure 11. Boundary wall along Bath Road.



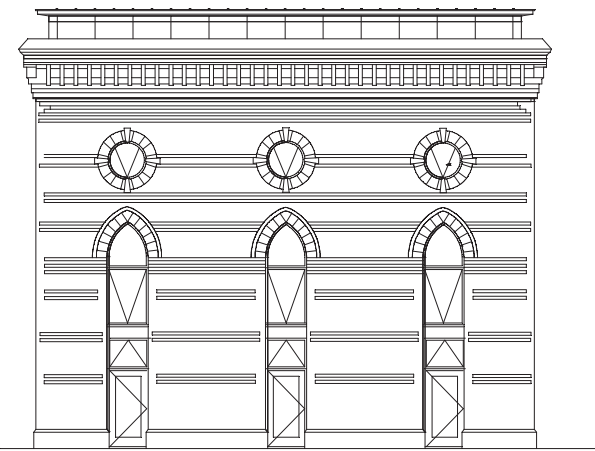
THAMES VALLEY
ARCHAEOLOGICAL
SERVICES



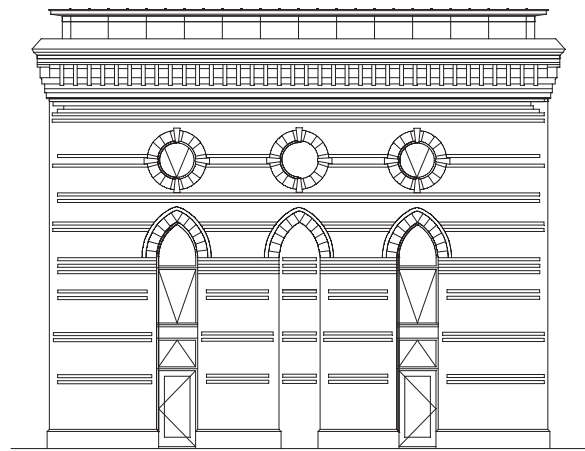
North Elevation



East Elevation



South Elevation (Bath Road)



West Elevation

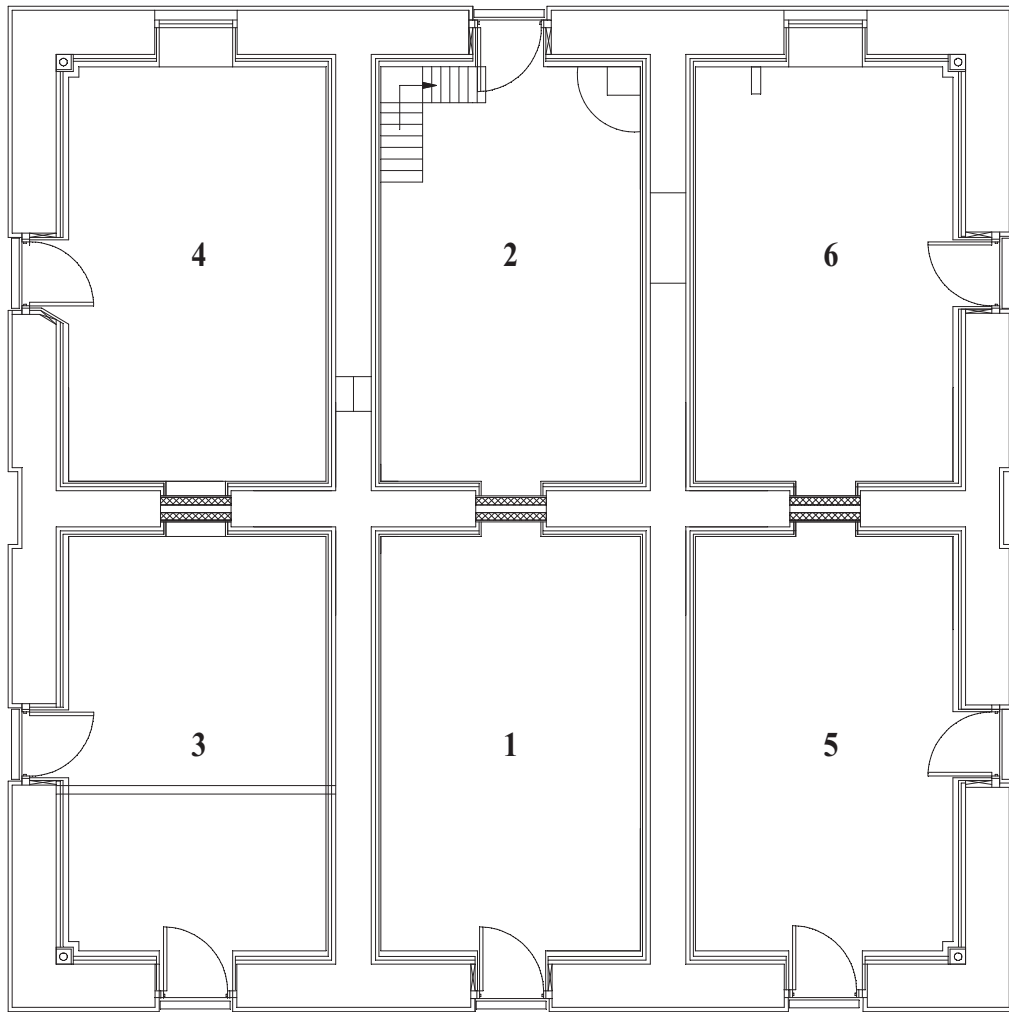
BRR13/109

**Bath Road Reservoirs,
Reading, Berkshire, 2013
Building Recording**

Figure 12. Water Tower Elevations.



THAMES VALLEY
ARCHAEOLOGICAL
SERVICES



BRR13/109



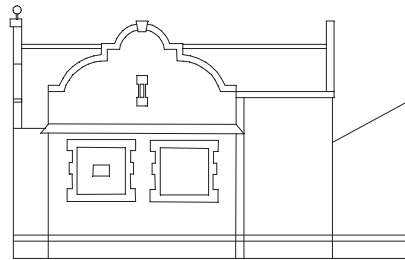
**Bath Road Reservoirs,
Reading, Berkshire, 2013
Building Recording**

Figure 13. Water Tower Plans.

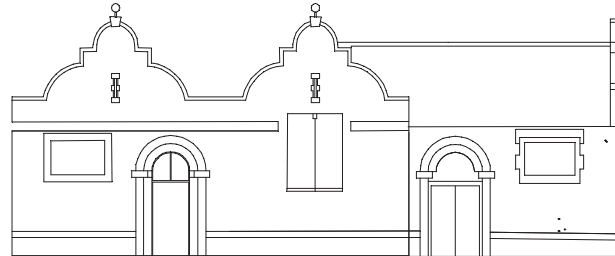


THAMES VALLEY
ARCHAEOLOGICAL
SERVICES

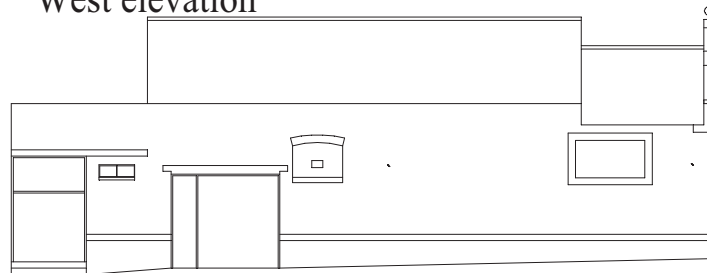
East elevation



South elevation



West elevation



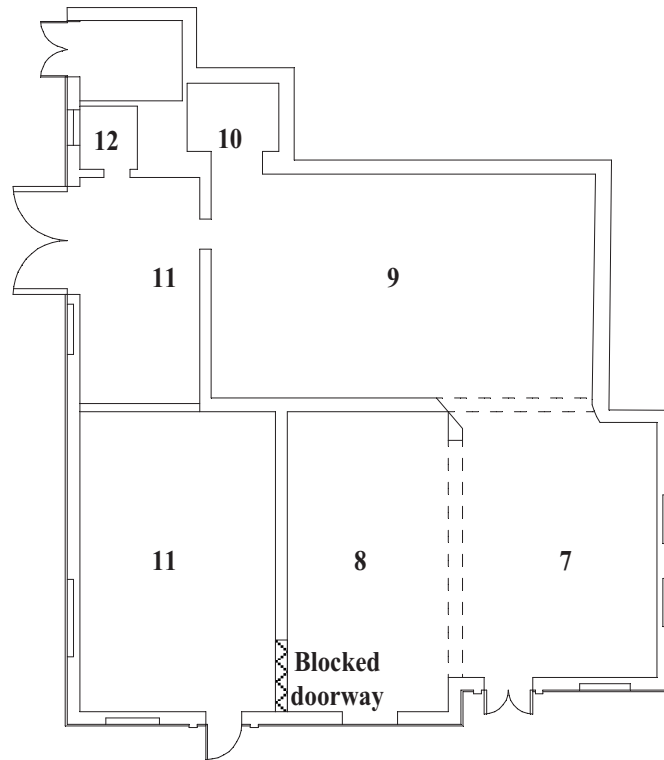
BRR13/109

**Bath Road Reservoirs,
Reading, Berkshire, 2013
Building Recording**

Figure 14. Pump house elevations.



THAMES VALLEY
ARCHAEOLOGICAL
SERVICES



BRR13/109



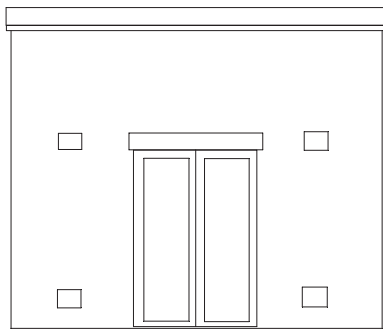
**Bath Road Reservoirs,
Reading, Berkshire, 2013
Building Recording**

Figure 15. Pumphouse Plan.

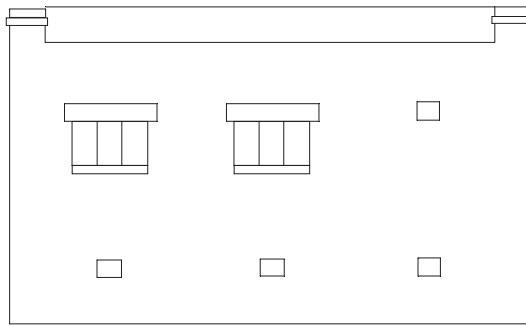


THAMES VALLEY

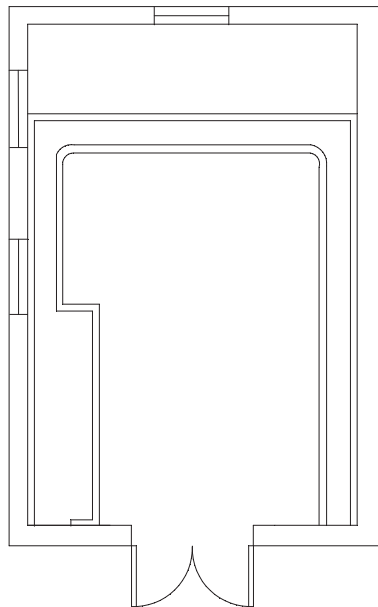
 ARCHAEOLOGICAL
 SERVICES



South elevation



West elevation



Plan



BRR13/109

**Bath Road Reservoirs,
Reading, Berkshire, 2013
Building Recording**

Figure 16. Substation Plan and Elevations



THAMES VALLEY
ARCHAEOLOGICAL
SERVICES

— READING CORPORATION WATERWORKS.—

— PROPOSED LIGHT IRON ROOF —

— DRAWING N^o 22 —

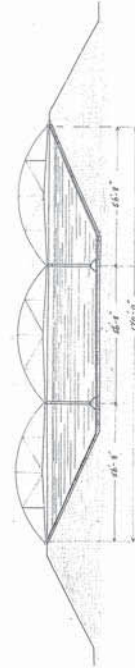
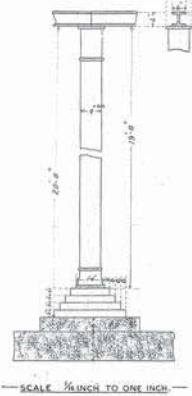
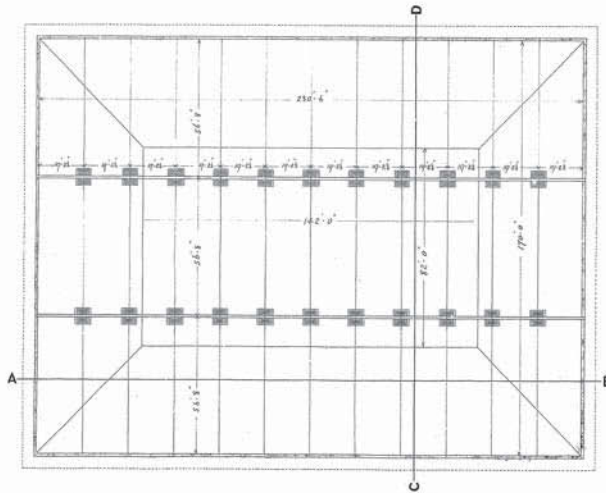
— FOR —

— SOUTH RESERVOIR, BATH ROAD WORKS.—

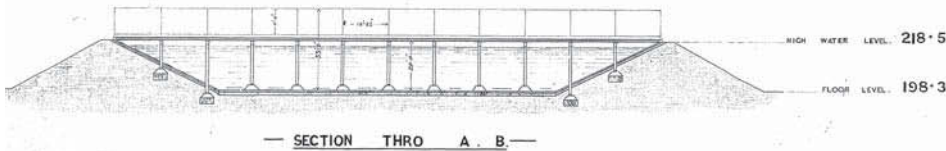
— 1902.—

— SCALE 1/4 INCH TO ONE FOOT —

— DETAIL OF —
— COLUMN & GIRDER —



— SECTION THRO C. D. —



— SECTION THRO A. B. —


 BRD A12A
 WATERWORKS MANAGER'S OFFICE
 TOWN HALL, READING
 PREVIOUS Dwg. No. 3353
 C33/012A

BRR 13/109

**Bath Road Reservoirs, Reading,
 Berkshire, 2013
 Building Recording**

Figure 17. Proposed Covered Reservoir Roof.

THAMES VALLEY
ARCHAEOLOGICAL
 SERVICES



Plate 1. Boundary wall, looking North, Scales: 2m and 1m.



Plate 2. Pillar, looking North, Scale: 2m.



Plate 3. Water tower, looking East.



Plate 4. Oculus, looking Northeast, Scale: 1m.

BRR 13/109

**Bath Road Reservoirs, Reading,
Berkshire, 2013
Building Recording
Plates 1 - 4.**

THAMES VALLEY
ARCHAEOLOGICAL
SERVICES



Plate 5. Blind Lancet, looking Northeast,
Scales: 2m and 1m.



Plate 6. Entablature decoration, looking Northeast,
Scales: 2m and 1m.



Plate 7. The roof, looking Northeast, Scales: 1m.



Plate 8. The internal structure, looking North.

BRR 13/109

**Bath Road Reservoirs, Reading,
Berkshire, 2013
Building Recording
Plates 5 - 8.**

THAMES VALLEY
ARCHAEOLOGICAL
SERVICES



Plate 9. Stairs in room 2, looking North, Scale: 2m.



Plate 10. Blocked door in room 4, looking north,
Scales: 2m and 1m.



Plate 11. Pumping equipment in room 5, looking North,
Scale: 1m.



Plate 12. Pump house, looking Northwest,
Scales: 2m and 1m.

BRR 13/109

**Bath Road Reservoirs, Reading,
Berkshire, 2013
Building Recording
Plates 9 - 12.**

THAMES VALLEY
ARCHAEOLOGICAL
SERVICES



Plate 13. Pump house (East elevation), looking West.



Plate 14. Pump house (West elevation), looking Northeast, Scale: 2m.



Plate 15. Pumping equipment in room 8, looking North.



Plate 16. Blocked door in room 8, looking West.

BRR 13/109

**Bath Road Reservoirs, Reading,
Berkshire, 2013**
Archaeological Building Recording
Plates 13 - 16.

THAMES VALLEY
ARCHAEOLOGICAL
SERVICES



Plate 17. Pumping equipment in room 9, looking East.



Plate 18. Detail of hoist in room 9, looking North.



Plate 19. Room 11, looking South, Scales: 2m and 1m.



Plate 20. Former substation, looking East, Scales: 2m and 1m.

BRR 13/109

**Bath Road Reservoirs, Reading,
Berkshire, 2013
Building Recording
Plates 17 - 20.**

THAMES VALLEY
ARCHAEOLOGICAL
SERVICES



Plate 21. Substation, looking Northeast,
Scales: 2m and 1m.



Plate 22. Internal view of substation, looking North,
Scales: 2m and 1m.



Plate 23. Lean to, looking Northeast, Scale: 2m.



Plate 24. Steps up the bund, looking North,
Scales: 2m and 1m.

BRR 13/109

**Bath Road Reservoirs, Reading,
Berkshire, 2013
Building Recording
Plates 21 - 24.**

THAMES VALLEY
ARCHAEOLOGICAL
SERVICES



Plate 25. Covered filtration bed, looking South.



Plate 26. Filtration bed, looking Southeast.



Plate 27. Covered reservoir, looking South.



Plate 28. Disused reservoir, looking North.

BRR 13/109

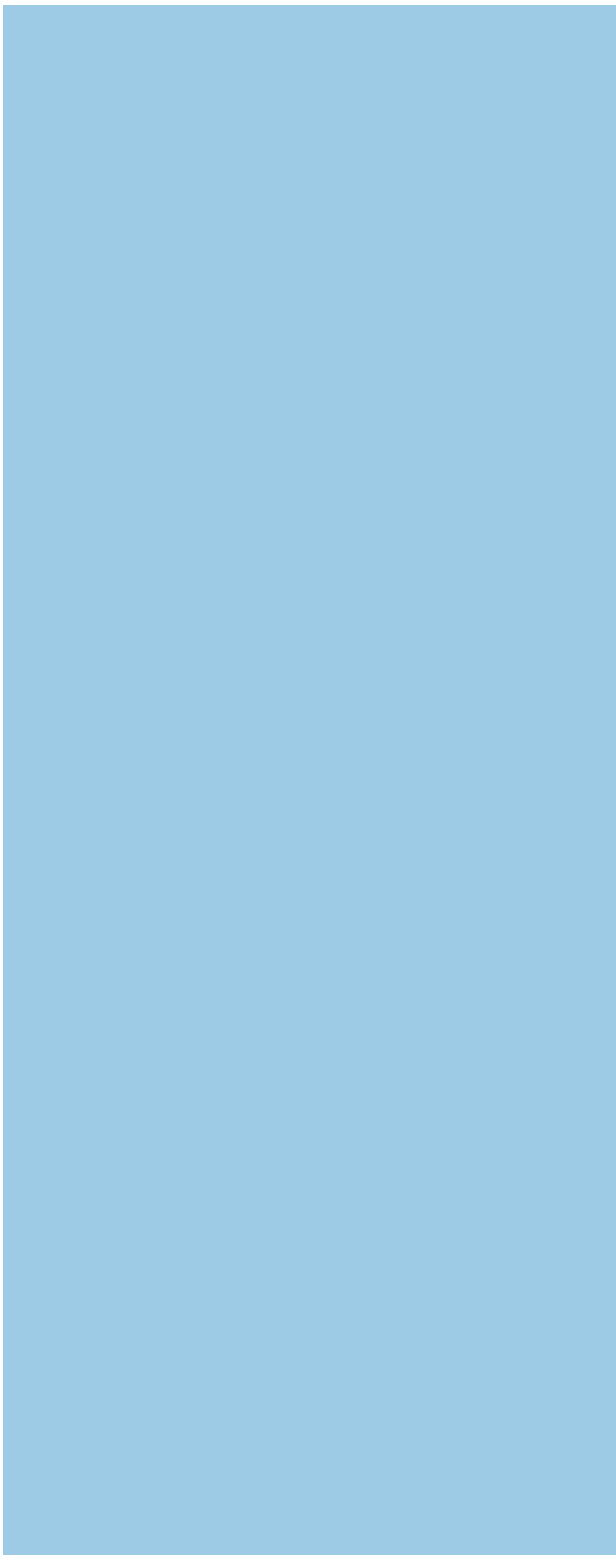
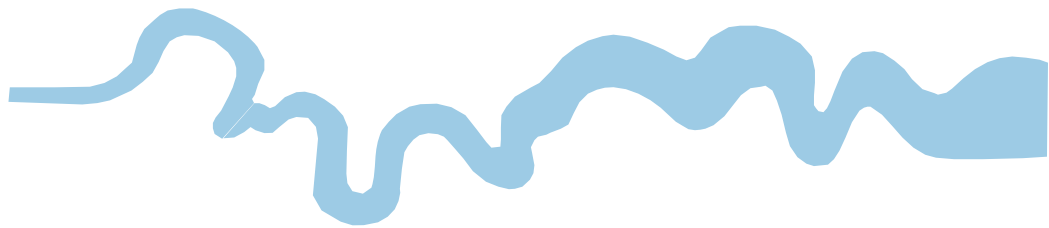
**Bath Road Reservoirs, Reading,
Berkshire, 2013
Building Recording
Plates 25 - 28.**

THAMES VALLEY
ARCHAEOLOGICAL
SERVICES

TIME CHART

	Calendar Years
Modern _____	AD 1901
Victorian _____	AD 1837
Post Medieval _____	AD 1500
Medieval _____	AD 1066
Saxon _____	AD 410
Roman _____	AD 43
Iron Age _____	BC/AD 750 BC
Bronze Age: Late -----	1300 BC
Bronze Age: Middle -----	1700 BC
Bronze Age: Early -----	2100 BC
Neolithic: Late	3300 BC
Neolithic: Early	4300 BC
Mesolithic: Late	6000 BC
Mesolithic: Early	10000 BC
Palaeolithic: Upper	30000 BC
Palaeolithic: Middle	70000 BC
Palaeolithic: Lower	2,000,000 BC





**Thames Valley Archaeological Services Ltd,
47-49 De Beauvoir Road, Reading,
Berkshire, RG1 5NR**

**Tel: 0118 9260552
Fax: 0118 9260553
Email: tvas@tvas.co.uk
Web: www.tvas.co.uk**