

T H A M E S V A L L E Y

ARCHAEOLOGICAL

S E R V I C E S

**RAF Daws Hill, High Wycombe,
Buckinghamshire**

Building Recording

by Genni Elliott

Site Code: DHHW11/36

(SU 8700 9150)

RAF Daws Hill, High Wycombe, Buckinghamshire

**Building Recording
For Taylor Wimpey West London**

by Genni Elliott
Thames Valley Archaeological Services Ltd

Site Code DHHW 11/36

March 2014

Summary

Site name: RAF Daws Hill, High Wycombe, Buckinghamshire

Grid reference: SU 8700 9150

Site activity: Building Recording

Date and duration of project: 20th – 22nd January 2014

Project manager: Steve Ford

Site code: DHHW 11/36

Summary of results: RAF Daws Hill appeared to be a largely piece-meal development laid out to requirement rather than organised plan. Apart from separating out the residential areas, leisure, work and school facilities were mixed within the technical area. There was little to identify it as an American air base except in the naming of the roads, residential estates and most likely the two school accommodation blocks.

Location and reference of archive: The archive is presently held at Thames Valley Archaeological Services, Reading and will be deposited with Buckinghamshire Museum Service in due course.

This report may be copied for bona fide research or planning purposes without the explicit permission of the copyright holder. All TVAS unpublished fieldwork reports are available on our website: www.tvas.co.uk/reports/reports.asp.

Report edited/checked by:	Steve Ford✓ 12.0314
	Steve Preston✓ 10.03.14

RAF Daws Hill, High Wycombe, Buckinghamshire Building Recording

by Genni Elliott

Report 11/36c

Introduction

This report documents the results of a building recording at RAF Daws Hill, High Wycombe, Buckinghamshire (SU 8700 9150) (Fig. 1). The work was commissioned by Mr William Luck on behalf of Taylor Wimpey West London Ltd, Stratfield House, Station Road, Hook, Hampshire, RG27 9PQ.

Planning consent (appln no. 13/05799/FULEA) has been sought from Wycombe District Council to demolish the existing buildings of a former airforce base prior to redevelopment as a mixed use site. A programme of building recording prior to the demolition is required in order that nature of the supply base can be recorded before demolition as concluded in a report on the significance of the buildings as heritage assets (DPP 2012). This report documents the results of the building survey. This is in accordance with the Department for Communities and Local Government's Planning Policy Statement, *National Planning Policy Framework* (NPPF 2012), and the District council's policies on historic buildings. The fieldwork was undertaken by Genni Elliott and Danielle Milbank between 20th – 22nd January 2014 and the site code is DHHW 11/36.

The archive is presently held at Thames Valley Archaeological Services, Reading and will be deposited with Buckinghamshire Museum Service and a copy sent to the National Monuments Record in due course.

Location, topography and geology

RAF Daws Hill is located immediately to the north of the M40, just off junction 4. The site is accessed off Daws Hill Lane and bounded by to the east by farmland, to the north by Warren Wood with housing to the west (Fig. 2). The underlying geology consists of clay with flints overlying upper chalk (BGS 2005). The site slopes from c. 148m above Ordnance Datum in the south to c. 135m aOD in the north.

Historical Background

The history of the site has been largely covered in the Heritage Statement (DPP 2012), but in summary the site was acquired from Wycombe Abbey School in 1941 by the RAF. It was subsequently used by the United States Army Airforce (USAAF) following their entry into World War II and functioned as their European

Headquarters, housing the eighth Air Force. Following the end of the war, between 1945 and 1951 the site was used by the local authority to house Londoners displaced as a result of the Blitz. From 1951 the base was used by the US Strategic Air Command, which lasted throughout the Cold War. At the height of the Cold War up to 800, mainly American, personnel were based here, but that had fallen to 350 by 1992. In 2006 residential accommodation within Doolittle Village was replaced with modern bungalows. The site was closed in 2007.

Within grounds handed back to the school is a grade II* listed three-storey underground command bunker, built during WWII and renovated in the 1950's in response to the Cold War. The bunker functioned as the USA's main European planning and operations centre responsible for organizing nuclear defence.

Archaeological evaluation of the site had concluded that it had little or no archaeological potential aside from the upstanding buildings (Taylor 2012; Ford 2011).

Methodology

The building survey was carried out in accordance with guidelines set out by the Royal Commission on Historic Monuments for a level 1 record and current best practice (EH 1998; 2003). The survey comprises a summary statement of the building's type, purpose, materials and dates, so far as these are apparent from visual inspection, a sketch plan and a basic photographic record of the exterior.

Description (Fig. 2)

The base can be split into three distinctive areas; the Eaker Estate, Doolittle Village (both residential) and the technical area. A number of the roads were named after American states: Alabama, Alaska, Arizona, California and Florida, all located within the residential areas. The main road, running northwest-southeast was named Kennedy Avenue with the other roads within the technical area named First to Sixth Streets. Three other roads were named after trees: Beech, Birch and Oak Street. The layout of the site can be partially explained by its previous function – as parkland associated with Wycombe Abbey. The Second Edition Ordnance Survey map of 1898–9 shows the layout of the park as areas of plantation divided by wide, open avenues. Kennedy Avenue conforms to one of these and Fifth Street to another. First Street follows the line of an existing small road.

Eaker Estate (Blocks 1001-1015) (Fig. 3)

The Eaker Estate, named after General Ira C. Eaker, commander of the Eighth Air Force, located at Daws Hill during WWII, was located on a parcel of land to the east of the main site. The Eaker Estate consisted of one

main 'u-shaped' road named Florida Street. On the outside of the 'u' were located six bungalows, numbered 1001–1006, each with a large carport attached to one side (Pl. 1). At the north end was a block of three terraced houses, numbered 1007. On the inside of the 'u' were four blocks of four terraced houses, numbered 1008–1012, each with a front porch and bay window (Pl. 2). The buildings were of similar brick construction with tiled, shallow-pitched roofs. In the centre of the 'u' were two children's play parks, backing onto the gardens of the terraced blocks (Pl. 3). To the north of the houses was a parking area, an open, grassy slope and four tennis courts (Pl. 4). At the far north-east corner of the site was a brick shed of unknown function (1015).

The housing was typical of a British 1960's housing estate, with the exception of the large carports attached to the bungalows. The main difference lay in the layout of the estate; with its large amount of open space, wide roads and low density of housing.

Doolittle Village (Blocks 1051-1075) (Fig. 4)

Doolittle Village, named after General 'Jimmy' Doolittle, Lieutenant General of the Eighth Air Force from 1944–5, was located at the south-west end of the site backing onto Daws Hill Lane. Doolittle Village was arranged around two loops, with a spur running parallel to Daws Hill Lane. Arranged around the roads were 25 housing blocks (all bungalows) numbered 1051-1075. Of the 24 blocks, one was a small detached bungalow (1054, Pl. 5), ten were large detached bungalows (1051, 1052, 1056, 1059, 1063-1066, 1069, 1073, Pl. 6) and the remaining 14 were semi-detached bungalows (1053, 1055, 1057, 1058, 1060-1062, 1067, 1068, 1070-1072, 1074, 1075, Pl. 7). All the bungalows were rebuilt in 2006 of brick and tile construction, replacing earlier accommodation on the same layout. Internally all the bungalows were of generous size with large kitchen, utility and living quarters. The detached bungalows contained four bedrooms whilst the semis contained three bedrooms.

The layout of the estate conforms to the American 'Radburn' style of siting the houses in open space and adjusting their outlook to account for light and views. Between units 1062 and 1063 and units 1066 and 1067 were sets of swings and at the end of Alaska Street was a small play area (Pl. 8).

Technical Area (Fig. 5)

Blocks 1100-1130

Blocks 1100-1130 were located at the southern end of the site, mainly along the western side of Kennedy Avenue. At its southern end was the base flagpole, set in a landscaped grassed area with footpaths leading to Doolittle Village and Kennedy Avenue.

Blocks 1100-1102 were formerly residential accommodation (Pl. 10), each divided into two, three-bedroom units. Each block was of pre-fabricated construction with corrugated metal roofs, built in the 1950s or 1960s. It is possible that these were typical of what was present in Doolittle Village prior to rebuilding.

Block 1104 was the community centre (Pl. 11), located on the edge of Doolittle Village. It was a single-storey pre-fabricated structure with pebble-dash render.

Block 1107 was formed of two small buildings; the earlier one being of block construction with two blocked windows and the later one being of brick construction with a flat roof.

Block 1109 was located at the main site entrance; functioning as the security checkpoint and situated within the centre of the road, where it had been widened. The building was of brick and glass construction with an overhanging, flat roof (Pl. 12).

Blocks 1125-1127 formed a group of similarly constructed brick buildings with flat roofs and metal 'Crittall' type window, dating to the 1950's -1960's, within the area of the ATC No 332 (High Wycombe) Squadron compound (Pl. 13). Also located within this area were a flagpole and a pair of concrete American eagles (Pl. 14).

Blocks 1128 and 1130 were in a separate compound, housing communications. Block 1128 was a concrete building, sat on which was the main communications mast (Pl. 15), which dominated the site, being the tallest structure in the area. Block 1130 was a small pre-fabricated building clad with fibreglass to resemble bricks.

Blocks 1200-1219

Blocks 1200-1219 were located on the eastern side of Kennedy Avenue at its southern end and bounded by First and Second Streets. Large areas were left open with a wooded sitting area between 1200 and 1206 and open land to the rear of 1206.

Blocks 1200 and 1205 were at the southern end of Kennedy Avenue and consisted of single storey brick buildings dating to the 1950's – 1960's, formerly housing security.

Blocks 1201-1203 were pre-fabricated huts fronting onto Second Street with metal roofs and a pebble-dashed exterior dating to the 1950's, formerly used for administration purposes.

Block 1204 (Pl. 16) was of modern (1990's) construction with brick walls and a tiled roof. It had two projecting wings off a main central block, similar in shape to a B-2 spirit stealth bomber. The central block was mainly of glass construction with a raised cupola. At the end of the east wing was a *porte cochere* extension for vehicle drop-offs. The building was formerly used as the Naval Activity (UK) Headquarters (NAVACTUK).

Block 1206 (Pl. 17) was the visitor centre. It was of multiple construction dates with an earlier (1950s) pre-fabricated structure at the northern end and a more recent brick extension to the south with an 'm-shaped' roof. To the rear were plastic covered seating areas.

Blocks 1217 and 1219 (Pl. 18) formed the site petrol station, garage and small convenience store. The structures were typical of garages and petrol stations with a corrugated metal clad structure and various external small brick buildings. The petrol pumps on the garage forecourt had been removed.

Blocks 1300-1329

Blocks 1300-1329 were located on the northwest side of Kennedy Avenue before it turned to the north and were of mixed leisure and warehousing and included two tennis courts.

Blocks 1300 and 1301 were located along Fourth Street. Block 1300 was a modern (1990s) corrugated metal clad warehouse with double height doors at the south-western end and a smaller door at the northeastern end. Block 1301 consists of two buildings side by side and a covered loading bay. The building is of at least two phases of construction with a brick built building to the south and a rendered building to the north. The loading bay was of corrugated metal.

Block 1323 was similarly a combination of two buildings with four loading doors fronting onto Kennedy Avenue and a lower brick built structure behind it and to the south.

Block 1325 (Pl. 19), next to the tennis courts, was a racquet ball court built in the 1980's. The building is of metal clad construction and proportionally very tall when compared to its size.

Block 1327 (Pl. 19) was a relatively modern (1980s) metal clad warehouse with a loading bay onto Kennedy Avenue.

Blocks 1328 and 1329 (Pl. 20) were two identical modern (1990s) warehouses coloured tangerine. Each had a loading door fronting onto Kennedy Avenue. Internally 1329 had a concrete floor with raised metal walkways around the edge (Pl. 21).

Blocks 1400-1413

Blocks 1400-1413 were located in the centre of the site, with Kennedy Avenue to the southwest and Beech Street to the northeast.

Block 1400 was a 'u-shaped' block constructed of two buildings with extensions. Both buildings were probably brick built but were similar in design to the pre-fabricated huts seen elsewhere on the site.

Block 1402 (Pl. 22) was a pair of buildings with a pebble-dash render. In each of the buildings was a large loading bay door, indicative of its former use as a fire station.

Blocks 1403, 1404, 1405, 1408 and a set of tanks, 1407, were arranged around Third Street and Birch Street and formed a set of buildings relating to public works within the site (Pl. 23). Blocks 1403 and 1404 were two identical pre-fabricated buildings linked by later brick infill. Block 1408, opposite, consisted of temporary covered storage sheds. Block 1405 housed the heating plant as evidenced by the two chimneys. The structure was brick built with a pebble-dash render. To the rear was a brick built extension with three roller doors. To the east were located two tanks, block 1407, originally for diesel storage (Pl. 24).

Block 1406 was a two-storey building fronting onto Beech Street. It was brick built and covered in render with a pitched gable-ended roof. Access to the first floor was via external staircases.

Block 1409 was a small brick built building on the corner of Fourth and Beech Streets with a pitched roof and a brick flue.

Blocks 1412 and 1413 fronted onto Fourth Street. Block 1412 was formerly the site chapel (Pl. 25), more recently used as the music building for the school. It was of brick construction with a flat roof, except the central part which is covered by a raised, curved roof. Beside it block 1413 housed the Pine Tree Lane bowling alley (Pl. 26), which appeared to be constructed of two identical frame buildings, in-filled with rendered panels. The roof was 'm-shaped' and clad in corrugated metal.

Blocks 1500-1525

Blocks 1500-1525 were located in the centre of the site, bounded by First Street, Fifth Street and Beech Street.

Block 1500 was formerly the fitness centre and consisted of a large warehouse style structure, presumably of steel frame construction and clad in corrugated metal. It was two buildings wide with an 'm-shaped' roof (Pl. 27).

Blocks 1501-1503 were pre-fabricated huts fronting onto Beech Street. They had shallow pitched roofs and a pebble-dash render. Blocks 1501 and 1502 were linked via a further pre-fabricated hut.

Blocks 1505-1510 fronted onto Fifth Street and like 1501-1503 were single storey pre-fabricated huts with shallow pitched roofs and a mixture of painted render and pebble-dash. Blocks 1507 and 1508 were linked together by a later brick extension. Block 1509 was the community Bank (Pl. 28), a branch of Bank of America and block 1510 was the post office which had both a British and USA post box on either side of the entrance (Pl. 29).

Block 1512 was an extended warehouse with corrugated metal cladding and a metal cat-slide roof.

Block 1516 was a single storey corrugated metal clad building with a similarly clad loading bay on its southern elevation. Immediately to the north of 1516 was block 1523; a small single storey brick building with a shallow pitched roof. It was formerly men's urinals (Pl. 30).

Block 1522 was a small, single storey brick built building with a flat roof, located behind blocks 1506-1507.

Block 1525 fronted onto First Street and was a two storey; brick built building with a flat roof. Along each side was metal cladding and two rows of windows.

Blocks 1601-1609

Blocks 1601-1609 were a small group of community buildings located in the centre of the site and bounded by Kennedy Avenue, Fourth Street, Fifth Street and Beech Street.

Block 1601 was a large building fronting Fourth Street and formed of three parts. In the centre was a slightly taller building with a smaller building on either side; all had flat roofs and painted render.

Block 1603 was a large single storey brick building, formerly the teen centre. It had a shallow pitched roof and various extensions added to the north, east and south elevations. In the northeast corner was a painted mural incorporating a pair of hands, various flags and names of the students from 2001 (Pl. 31).

Block 1604 was recorded as being the theatre, though is labelled as water utility. It was a warehouse type building with a brick built base and corrugated metal clad superstructure with a sheet metal roof.

Blocks 1605 and 1609 were conjoined, with 1605 being the cafeteria. The building was single storey of painted block work construction and a flat roof (Pl. 32).

Blocks 1800-1819

Blocks 1800-1819 were located at the far northeast end of the site, to the north of Fifth Street.

Block 1800 was situated in its own compound along with some 'tanks'. It was formerly the emergency power building, constructed of brick, with a flat roof.

Block 1802 was located at the corner of Fifth and Sixth Streets. It was brick built with a flat roof and several garage door style openings. A site map recorded it as the Auto Hobby Shop.

Block 1805 was set apart from the other buildings and was a corrugated metal clad warehouse with a roller door at the northwest end. Outside the building was a basketball hoop (Pl. 33).

Block 1809 was a small tin shed that housed the emergency water supply. Very little of it could be seen as it was surrounded by a brick wall.

Blocks 1810 and 1814 (Pl. 34) were two barrack style three-storey dormitories built in the 1960s for housing students attending the London Central High School. Both were brick built and rendered white. At either end were external staircases for accessing upper storeys. Block 1810 was named Trinity Hall and 1814 was named Mansfield Hall. It is not known why the halls were named as they were, but it is likely that they are significant. Trinity may be named after the first atomic weapons test by the USA and relate to the strategic importance of Daws Hill during the Cold War. Alternatively Mansfield and Trinity are Oxford colleges; quite what the connexion might be is obscure, and deliberately misleading names might conceivably have been chosen for security purposes. A nostalgic reference to 1950s Hollywood pin-up Jayne Mansfield cannot be ruled out: she reportedly visited the area in the 1960s.

Block 1819 consisted of two buildings joined together (Pl. 35). A site map listed it as a gymnasium. The building was set slightly down the hill and was of two storeys. The eastern most building had a curved roof, whilst the western most building had a hipped roof with a cupola at its peak. Both buildings were of brick construction with the western most one being of similar construction style to block 1907; the main school building.

Blocks 1900-1910

Blocks 1900-1910 were located at the far northwest end of the site, to the north of Fifth Street.

Blocks 1900-1905 formed six interconnecting huts, laid out in three rows parallel to Fifth Street, built in the 1950's and used as classrooms as part of the London Central High School (Pl. 36). The huts were of English bond brick construction with shallow pitched roofs. A nearby map identified 1901 as foreign language, 1902 as supply and 1903 as the media centre.

Block 1906 was the northernmost building within the site and located within its own compound. It was of brick construction with a steeply pitched metal roof.

Block 1907 (Pl. 37) was the main building of the London Central High School, a day and boarding school for the children of American personnel based in Britain and further afield. The building was built in 1987, probably of steel frame construction with brick cladding. It is one of the few buildings of multiple stories within the site.

Block 1910 was a small electric intake sub-station of brick construction with a gable roof (Pl. 38).

Interpretation

The earliest buildings on the site were of brick construction and dated from the early 1950s. By the mid 1950s many buildings were of pre-fabricated construction and typically long and narrow with shallow pitched roofs. Many were rendered in pebble-dash. Many of the buildings from the 1960s were of brick construction with metal 'Crittall' style windows. The most significant construction of the 1960s - 1970s was the creation of the Eaker residential Estate. Significant construction of the 1980s consisted of leisure facilities and the main London Central High School building as well as some of the warehouses. The 1990s saw further construction of warehousing and the NAACTUK building in the shape of the B-2 Spirit stealth bomber. The latest structures on site were the recent bungalows within Doolittle Village of brick and tile construction, laid out to the 1950s/1960s plan.

Conclusion

RAF Daws Hill appeared to be a largely piece-meal development laid out to requirement rather than to an organized plan. The main roads of Kennedy Avenue, First Street and Fifth Street can be related to the sites' previous life as parkland and go some way to explain the unstructured layout. Apart from separating out the residential areas, leisure, work and school facilities were mixed within the technical area. The only exceptions to the lack of prior planning were the residential estates which show clear evidence of design and placement of buildings. The majority of the buildings within the technical area date from the 1950s and 1960s and consist of pre-fabricated huts, similar brick built structures and warehouses. More significance can be attributed to the naming of the roads, residential estates and most likely the two school accommodation blocks and most clearly demonstrate the link with USA and the base's role in World War II.

References

- BGS, 2005, *British Geological Survey*, 1:50000, Sheet 255, Drift Edition, Keyworth
- DPP 2012, 'RAF Daws Hill, High Wycombe, Buckinghamshire, Statement of significance', DPP Heritage and Design Ltd, report AT/JH/12261-3/R001m, London
- EH, 1998, 'Monuments of War: the evaluation, recording and management of twentieth-century military sites', English Heritage, London
- EH, 2003, 'Twentieth-Century Military Sites: Current approaches to their recording and conservation', English Heritage, London
- Ford, S, 2011, 'RAF Daws Hill, High Wycombe, Buckinghamshire: an archaeological desk-based assessment', Thames Valley Archaeological Services unpubl rep 11/36, Reading
- NPPF 2012, *National Planning Policy Framework*, Dept Communities and Local Govt, London
- RCHME, 1996, *Recording Historic Buildings: a descriptive specification*, 3rd edn, Roy Comm Hist Monuments (England), London
- Taylor, A, 2012, 'RAF Daws Hill, High Wycombe, Buckinghamshire: an archaeological evaluation', Thames Valley Archaeological Services unpubl rep 11/36b, Reading

APPENDIX 1: Photographic Catalogue

A .Digital

<i>Cat. No.</i>	<i>Scales</i>	<i>Location</i>	<i>Direction</i>	<i>Description</i>
1	1x2m	1052	S	Exterior
2	2x2m	1052	NW	Exterior
3	2x2m	1052	NE	Exterior
4	2x2m	1052	NE	Exterior
5	1x2m	1052	E	Exterior
6	2x2m	1052	SE	Interior Room 1
7	2x2m	1052	W	Interior Room 1
8	2x2m	1052	W	Interior Room 1
9	2x2m	1052	NW	Interior Room 1
10	2x2m	1052	NE	Interior Room 1
11	2x2m	1052	W	Interior Room 2
12	2x2m	1052	SE	Interior Room 2
13	2x2m	1052	NW	Interior Room 2
14	2x2m	1052	SE	Interior Room 3
15	2x2m	1052	W	Interior Room 3
16	2x2m	1052	NW	Interior Room corridor
17	1x2m	1052	SE	Interior Room 4
18	2x2m	1052	W	Interior Room 4
19	2x2m	1052	SE	Interior Room 5
20	2x2m	1052	NE	Interior Room 5
21	1x2m	1052	SE	Interior Room 5 en-suite
22	2x2m	1052	W	Interior Room 6
23	2x2m	1052	N	Interior Room 6
24	2x2m	1052	W	Interior Room 7
25	1x2m	1052	W	Interior Room 8
26	2x2m	1053B	NE	Exterior
27	2x2m	1053B	NW	Exterior
28	2x2m	1053B	NW	Exterior
29	2x2m	1053B	W	Exterior
30	2x2m	1053B	SW	Exterior
31	2x2m	1053B	NE	Interior Room 1
32	2x2m	1053B	SE	Interior Room 1
33	2x2m	1053B	W	Interior Room 1
34	2x2m	1053B	E	Interior Room 2
35	2x2m	1053B	W	Interior Room 2
36	2x2m	1053B	NE	Interior Room 3
37	1x2m	1053B	NE	Interior Room 4
38	1x2m	1053B	NE	Interior Room 5
39	2x2m	1053B	E	Interior Room 6
40	2x2m	1053B	S	Interior Room 6
41	2x2m	1053B	W	Interior Room 7
42	2x2m	1053A	NE	General view
43	2x2m	1054	NE	General view
44	2x2m	1055	NE	Rear
45	2x2m	1055	SE	Front
46	2x2m	1056	SE	Front
47	1x2m	1057	NE	Oblique
48	2x2m	1058	SW	General view
49	2x2m	1060	W	Rear including 1059
50	1x2m	1059, 1061	NE	General view
51	2x2m	1062	NW	and swings
52	2x2m	1062, 1063	NW	and swings
53	2x2m	1065, 1066	SW	General view
54	2x2m	1064, 1068	SW	General view
55	2x2m	1068, 1069	SE	General view
56	-	1065	SE	along Alabama Circle
57	2x2m	1070	SW	General view
58	2x2m	1072, 1073	SW	General view
59	2x2m	1071	E	General view
60	2x2m	1074, 1075	SE	General view
61	2x2m	Playground	SW	General view
62	2x2m	1104	NE	community centre
63	1x2m	1051	SW	General view
64	-	-	NE	general shot to flag pole and road
65	2x2m	1329	W	General view

<i>Cat. No.</i>	<i>Scales</i>	<i>Location</i>	<i>Direction</i>	<i>Description</i>
66	2x2m	1329, 1328	NW	General view
67	2x2m	1107	SW	General view
68	2x2m	1325, 1327	NE	General view
69	2x2m	1327	SW	General view
70	2x2m	1323	NW	side
71	2x2m	1323	SW	front
72	2x2m	1300	SW	General view
73	2x2m	1412	SE	General view
74	2x2m	1413	SE	Bowling alley
75	2x2m	1412	S	General view
76	2x2m	1409	E	General view
77	2x2m	1413	W	side showing 'M' roof
78	2x2m	1406	SE	General view
79	2x2m	1402	NW	General view
80	2x2m	1404, 1405	NW	General view
81	2x2m	1408	E	General view
82	-	1407	NE	tanks
83	2x2m	1405	NW	General view
84	1x2m	1400	SE	General view
85	2x2m	1329	NW	Internal
86	2x2m	1329	E	Internal to door
87				NOT USED
88	2x2m	1400	N	Rear
89	2x2m	1201-1203	E	General view
90	2x2m	1202, 1203	S	General view
91	1x2m	1204	SW	General view
92	-	1206	SW	Rear of visitor centre
93	2x2m	1217, 1219	SW	Garage
94	2x2m	1205	E	Novactuk security and MOD police
95	1x2m	1200	SE	General view
96	1x2m	1206	NE	Visitor Centre
97	2x2m	1206	SE	Visitor Centre
98	2x2m	1102	NW	Prefab 3 bed chalet hut
99	2x2m	1100, 1101	NW	Prefab 3 bed chalet hut
100	2x2m	1601	E	Front, computer tech centre
101	2x2m	1600, 1605	NE	cafeteria
102	2x2m	1601	NE	oblique
103	-	1907	N	Central London High School
104	2x2m	1603	NW	General view
105	2x2m	1603	S	Class of 2001 mural
106	2x2m	1603	SW	Community centre
107	-	1604	SW	Water utility
108	1x2m	1605	S	Food distribution centre
109	2x2m	1604	SE	General view
110	2x2m	1605, 1609	SE	General view
111	2x2m	1501, 1502	E	General view
112	1x2m	1502, 1503	S	General view
113	-	1522	E	General view
114	2x2m	1505-1510	SE	General view
115	1x2m	1509	SE	Community bank
116	-	1510	E	US post box
117	2x2m	1510	W	General view
118	1x2m	1525	NW	General view
119	2x2m	1500	W	Fitness centre
120	2x2m	1512	SE	General view
121	2x2m	1516, 1523	W	General view
122	2x2m	1516	N	General view
123	1x2m	1802	NW	General view
124	1x2m	1805	NE	General view
125	2x2m	1814	NW	Mansfield Hall
126	2x2m	1805	SE	General view
127	2x2m	1810	SW	Trinity Hall
128	2x2m	1819	NW	General view
129	2x2m	1907	SW	General view
130	2x2m	1819	N	Gymnasium
131	2x2m	1819	NE	Gymnasium
132	-	1810	E	General view
133	2x2m	1800	NE	Electric power standby facility
134	-	1907	NW	School

<i>Cat. No.</i>	<i>Scales</i>	<i>Location</i>	<i>Direction</i>	<i>Description</i>
135	-	1903, 1907	NW	General view
136	2x2m	1907	N	Pathway
137	2x2m	1907	SE	School
138	-	1907	SW	School
139	2x2m	1910	N	Electric intake
140	2x2m	1906	SE	Electric building
141	2x2m	1902	SE	General view
142	-	1902, 1905	S	map
143	2x2m	1905	SE	and 'tunnel'
144	-	1901	SE	Classrooms
145	2x2m	1901	NE	General view
146	2x2m	1900	NE	General view
147	-	1814	SW	Rear
148	2x2m	1301	W	General view
149	2x2m	1300, 1323	NE	Rear
150	2x2m	1323	E	Rear
151	-		S	Tennis courts
152	1x2m	1128	SW	Radio mast base
153	2x2m	1130	SW	General view
154	1x1m	ATC	S	Pair eagles
155	1x2m	1127	SW	Including flagpole
156	2x2m	1126	S	General view
157	-	1008, 1009	NE	General view
158	-	1001, 1002	SE	General view
159	-	1003	SE	General view
160	-	1006, 1007	NE	General view
161	-	1010	SW	General view
162	-	1011, 1012	SW	General view
163	-		NE	Tennis courts
164	-	1015	E	General view
165	-	1010	E	2 play parks and rear of 1010
166	-	1109	NW	entrance security
167	-	1109	SE	entrance security

B. Colour Prints

<i>Cat. No.</i>	<i>Scales</i>	<i>Location</i>	<i>Direction</i>	<i>Description</i>
1	1x2m	1052	S	Exterior
2	2x2m	1052	NW	Exterior
3	2x2m	1052	NE	Exterior
4	2x2m	1052	NE	Exterior
5	1x2m	1052	E	Exterior
6	2x2m	1052	SE	Interior Room 1
7	2x2m	1052	W	Interior Room 1
8	2x2m	1052	W	Interior Room 1
9	2x2m	1052	NW	Interior Room 1
10	2x2m	1052	NE	Interior Room 1
11	2x2m	1052	W	Interior Room 2
12	2x2m	1052	SE	Interior Room 2
13	2x2m	1052	NW	Interior Room 2
14	2x2m	1052	SE	Interior Room 3
15	2x2m	1052	W	Interior Room 3
16	2x2m	1052	NW	Interior Room corridor
17	1x2m	1052	SE	Interior Room 4
18	2x2m	1052	W	Interior Room 4
19	2x2m	1052	SE	Interior Room 5
20	2x2m	1052	NE	Interior Room 5
21	1x2m	1052	SE	Interior Room 5 en-suite
22	2x2m	1052	W	Interior Room 6
23	2x2m	1052	N	Interior Room 6
24	2x2m	1052	W	Interior Room 7
25	1x2m	1052	W	Interior Room 8
26	2x2m	1053B	NE	Exterior
27	2x2m	1053B	NW	Exterior
28	2x2m	1053B	NW	Exterior
29	2x2m	1053B	W	Exterior
30	2x2m	1053B	SW	Exterior

<i>Cat. No.</i>	<i>Scales</i>	<i>Location</i>	<i>Direction</i>	<i>Description</i>
31	2x2m	1053B	NE	Interior Room 1
32	2x2m	1053B	SE	Interior Room 1
33	2x2m	1053B	W	Interior Room 1
34	2x2m	1053B	E	Interior Room 2
35	2x2m	1053B	W	Interior Room 2
36	2x2m	1053B	NE	Interior Room 3
37	1x2m	1053B	NE	Interior Room 4
38	1x2m	1053B	NE	Interior Room 5
39	2x2m	1053B	E	Interior Room 6
40	2x2m	1053B	S	Interior Room 6
41	2x2m	1053B	W	Interior Room 7
42	2x2m	1053A	NE	General view
43	2x2m	1054	NE	General view
44	2x2m	1055	NE	Rear
45	2x2m	1055	SE	Front
46	2x2m	1056	SE	Front
47	1x2m	1057	NE	Oblique
48	2x2m	1058	SW	General view
49	2x2m	1060	W	Rear including 1059
50	1x2m	1059, 1061	NE	General view
51	2x2m	1062	NW	and swings
52	2x2m	1062, 1063	NW	and swings
53	2x2m	1065, 1066	SW	General view
54	2x2m	1064, 1068	SW	General view
55	2x2m	1068, 1069	SE	General view
56	-	1065	SE	along Alabama Circle
57	2x2m	1070	SW	General view
58	2x2m	1072, 1073	SW	General view
59	2x2m	1071	E	General view
60	2x2m	1074, 1075	SE	General view
61	2x2m	Playground	SW	General view
62	2x2m	1104	NE	community centre
63	1x2m	1051	SW	General view
64	-	-	NE	general shot to flag pole and road
65	2x2m	1329	W	General view
66	2x2m	1329, 1328	NW	General view
67	2x2m	1107	SW	General view
68	2x2m	1325, 1327	NE	General view
69	2x2m	1327	SW	General view
70	2x2m	1323	NW	side
71	2x2m	1323	SW	front
72	2x2m	1300	SW	General view
73	2x2m	1412	SE	General view
74	2x2m	1413	SE	Bowling alley
75	2x2m	1412	S	General view
76	2x2m	1409	E	General view
77	2x2m	1413	W	side showing 'M' roof
78	2x2m	1406	SE	General view
79	2x2m	1402	NW	General view
80	2x2m	1404, 1405	NW	General view
81	2x2m	1408	E	General view
82	-	1407	NE	tanks
83	2x2m	1405	NW	General view
84	1x2m	1400	SE	General view
85	2x2m	1329	NW	Internal
86	2x2m	1329	E	Internal to door
87				NOT USED
88	2x2m	1400	N	Rear
89	2x2m	1201-1203	E	General view
90	2x2m	1202, 1203	S	General view
91	1x2m	1204	SW	General view
92	-	1206	SW	Rear of visitor centre
93	2x2m	1217, 1219	SW	Garage
94	2x2m	1205	E	Novactuk security and MOD police
95	1x2m	1200	SE	General view
96	1x2m	1206	NE	Visitor Centre
97	2x2m	1206	SE	Visitor Centre
98	2x2m	1102	NW	Prefab 3 bed chalet hut
99	2x2m	1100, 1101	NW	Prefab 3 bed chalet hut

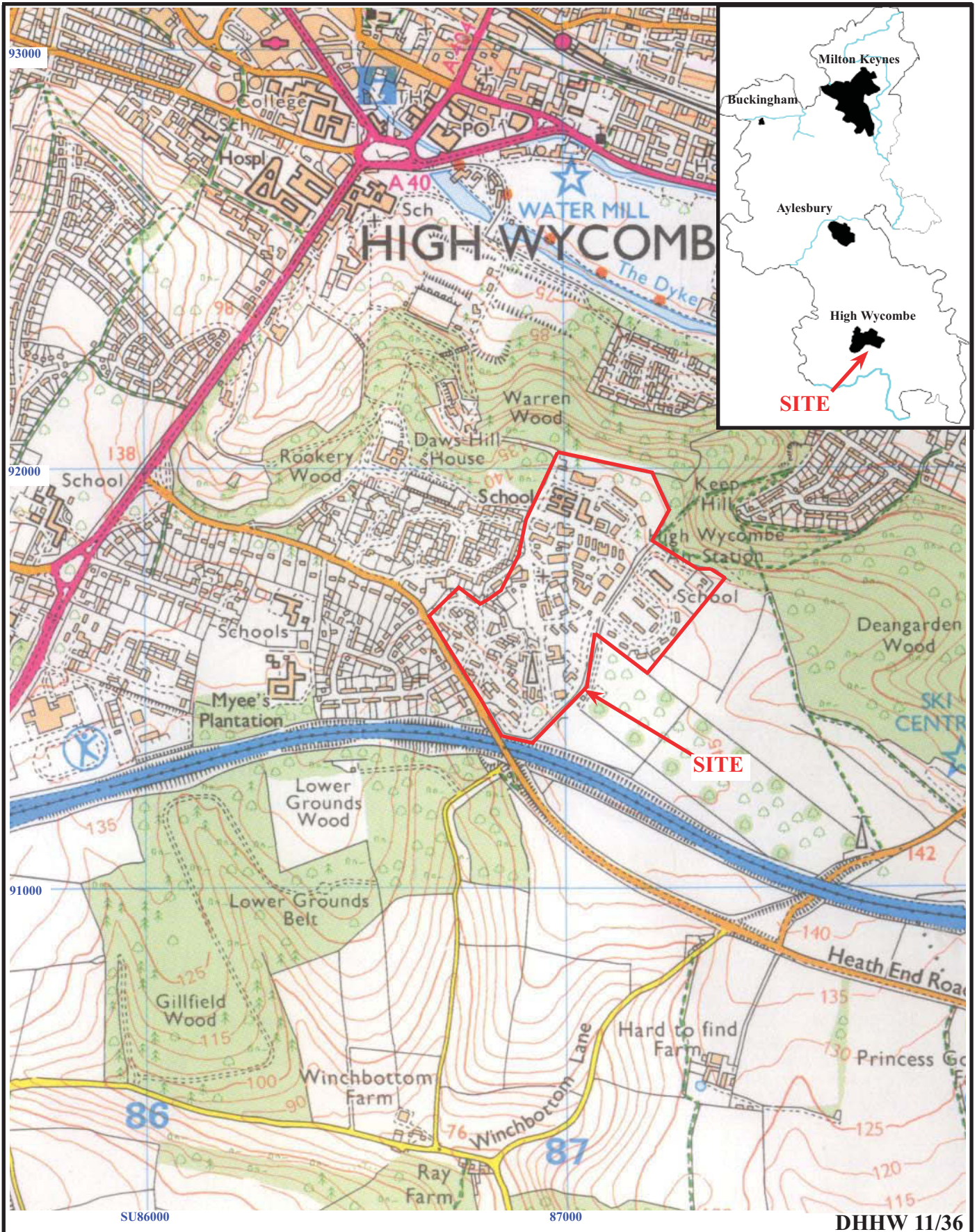
<i>Cat. No.</i>	<i>Scales</i>	<i>Location</i>	<i>Direction</i>	<i>Description</i>
100	2x2m	1601	E	Front, computer tech centre
101	2x2m	1600, 1605	NE	cafeteria
102	2x2m	1601	NE	oblique
103	-	1907	N	Central London High School
104	2x2m	1603	NW	General view
105	2x2m	1603	S	Class of 2001 mural
106	2x2m	1603	SW	Community centre
107	-	1604	SW	Water utility
108	1x2m	1605	S	Food distribution centre
109	2x2m	1604	SE	General view
110	2x2m	1605, 1609	SE	General view
111	2x2m	1501, 1502	E	General view
112	1x2m	1502, 1503	S	General view
113	-	1522	E	General view
114	2x2m	1505-1510	SE	General view
115	1x2m	1509	SE	Community bank
116	-	1510	E	US post box
117	2x2m	1510	W	General view
118	1x2m	1525	NW	General view
119	2x2m	1500	W	Fitness centre
120	2x2m	1512	SE	General view
121	2x2m	1516, 1523	W	General view
122	2x2m	1516	N	General view
123	1x2m	1802	NW	General view
124	1x2m	1805	NE	General view
125	2x2m	1814	NW	Mansfield Hall
126	2x2m	1805	SE	General view
127	2x2m	1810	SW	Trinity Hall
128	2x2m	1819	NW	General view
129	2x2m	1907	SW	General view
130	2x2m	1819	N	Gymnasium
131	2x2m	1819	NE	Gymnasium
132	-	1810	E	General view
133	2x2m	1800	NE	Electric power standby facility
134	-	1907	NW	School
135	-	1903, 1907	NW	General view
136	2x2m	1907	N	Pathway
137	2x2m	1907	SE	School
138	-	1907	SW	School
139	2x2m	1910	N	Electric intake
140	2x2m	1906	SE	Electric building
141	2x2m	1902	SE	General view
142	-	1902, 1905	S	map
143	2x2m	1905	SE	and 'tunnel'
144	-	1901	SE	Classrooms
145	2x2m	1901	NE	General view
146	2x2m	1900	NE	General view
147	-	1814	SW	Rear
148	2x2m	1301	W	General view
149	2x2m	1300, 1323	NE	Rear
150	2x2m	1323	E	Rear
151	-		S	Tennis courts
152	1x2m	1128	SW	Radio mast base
153	2x2m	1130	SW	General view
154	1x1m	ATC	S	Pair eagles
155	1x2m	1127	SW	Including flagpole
156	2x2m	1126	S	General view
157	-	1008, 1009	NE	General view
158	-	1001, 1002	SE	General view
159	-	1003	SE	General view
160	-	1006, 1007	NE	General view
161	-	1010	SW	General view
162	-	1011, 1012	SW	General view
163	-		NE	Tennis courts
164	-	1015	E	General view
165	-	1010	E	2 play parks and rear of 1010
166	-	1109	NW	entrance security
167	-	1109	SE	entrance security

C. Monochrome Images

<i>Cat. No.</i>	<i>Scales</i>	<i>Location</i>	<i>Direction</i>	<i>Description</i>
1	1x2m	1052	S	Exterior
2	2x2m	1052	NW	Exterior
3	2x2m	1052	NE	Exterior
4	2x2m	1052	NE	Exterior
5	1x2m	1052	E	Exterior
6	2x2m	1052	SE	Interior Room 1
7	2x2m	1052	W	Interior Room 1
8	2x2m	1052	W	Interior Room 1
9	2x2m	1052	NW	Interior Room 1
10	2x2m	1052	NE	Interior Room 1
11	2x2m	1052	W	Interior Room 2
12	2x2m	1052	SE	Interior Room 2
13	2x2m	1052	NW	Interior Room 2
14	2x2m	1052	SE	Interior Room 3
15	2x2m	1052	W	Interior Room 3
16	2x2m	1052	NW	Interior Room corridor
17	1x2m	1052	SE	Interior Room 4
18	2x2m	1052	W	Interior Room 4
19	2x2m	1052	SE	Interior Room 5
20	2x2m	1052	NE	Interior Room 5
21	1x2m	1052	SE	Interior Room 5 en-suite
22	2x2m	1052	W	Interior Room 6
23	2x2m	1052	N	Interior Room 6
24	2x2m	1052	W	Interior Room 7
25	1x2m	1052	W	Interior Room 8
26	2x2m	1053B	NE	Exterior
27	2x2m	1053B	NW	Exterior
28	2x2m	1053B	NW	Exterior
29	2x2m	1053B	W	Exterior
30	2x2m	1053B	SW	Exterior
31	2x2m	1053B	NE	Interior Room 1
32	2x2m	1053B	SE	Interior Room 1
33	2x2m	1053B	W	Interior Room 1
34	2x2m	1053B	E	Interior Room 2
35	2x2m	1053B	W	Interior Room 2
36	2x2m	1053B	NE	Interior Room 3
37	1x2m	1053B	NE	Interior Room 4
38	1x2m	1053B	NE	Interior Room 5
39	2x2m	1053B	E	Interior Room 6
40	2x2m	1053B	S	Interior Room 6
41	2x2m	1053B	W	Interior Room 7
42	2x2m	1053A	NE	General view
43	2x2m	1054	NE	General view
44	2x2m	1055	NE	Rear
45	2x2m	1055	SE	Front
46	2x2m	1056	SE	Front
47	1x2m	1057	NE	Oblique
48	2x2m	1058	SW	General view
49	2x2m	1060	W	Rear including 1059
50	1x2m	1059, 1061	NE	General view
51	2x2m	1062	NW	and swings
52	2x2m	1062, 1063	NW	and swings
53	2x2m	1065, 1066	SW	General view
54	2x2m	1064, 1068	SW	General view
55	2x2m	1068, 1069	SE	General view
56	-	1065	SE	along Alabama Circle
57	2x2m	1070	SW	General view
58	2x2m	1072, 1073	SW	General view
59	2x2m	1071	E	General view
60	2x2m	1074, 1075	SE	General view
61	2x2m	Playground	SW	General view
62	2x2m	1104	NE	community centre
63	1x2m	1051	SW	General view
64	-	-	NE	general shot to flag pole and road
65	2x2m	1329	W	General view

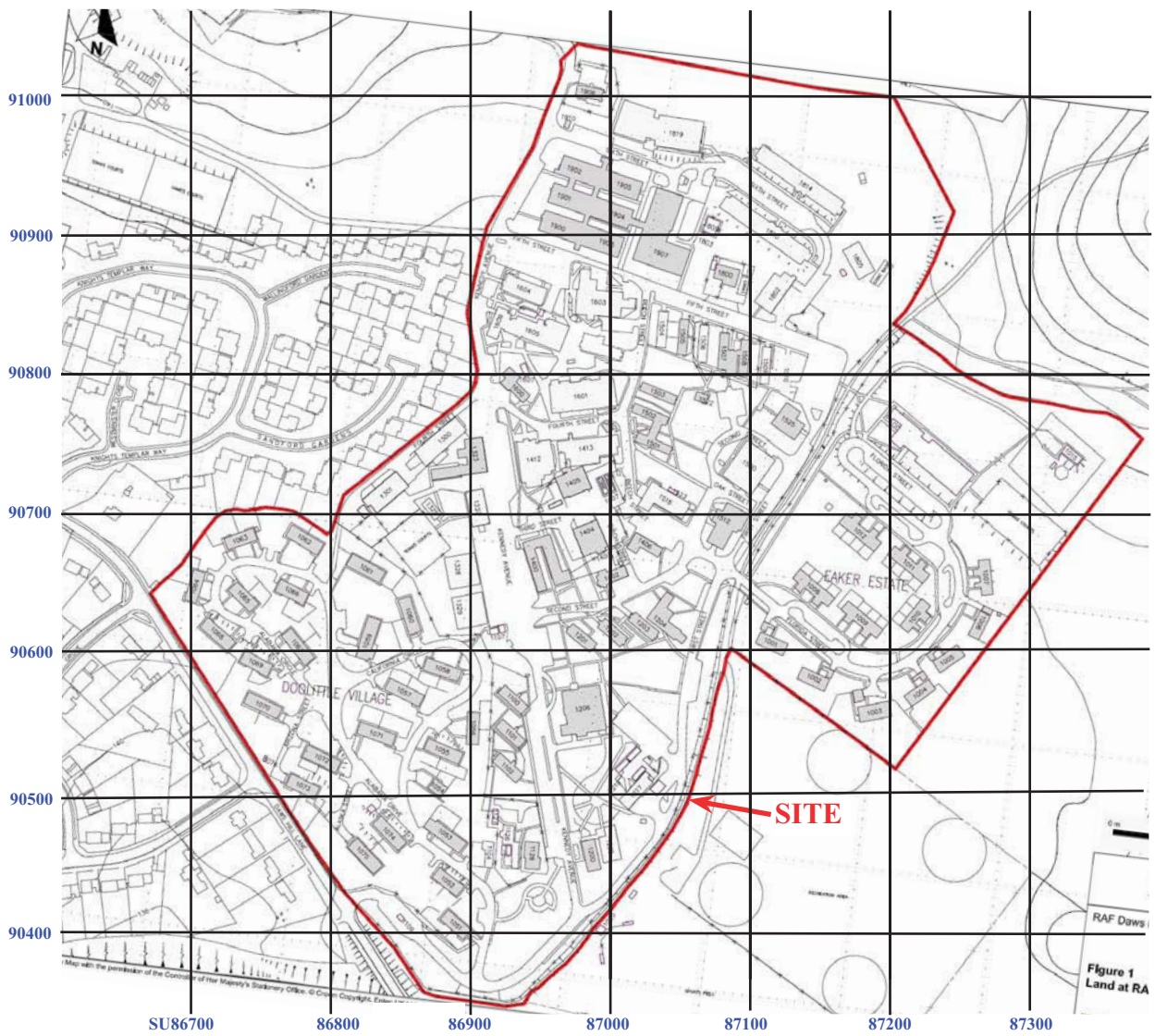
<i>Cat. No.</i>	<i>Scales</i>	<i>Location</i>	<i>Direction</i>	<i>Description</i>
66	2x2m	1329, 1328	NW	General view
67	2x2m	1107	SW	General view
68	2x2m	1325, 1327	NE	General view
69	2x2m	1327	SW	General view
70	2x2m	1323	NW	side
71	2x2m	1323	SW	front
72	2x2m	1300	SW	General view
73	2x2m	1412	SE	General view
74	2x2m	1413	SE	Bowling alley
75	2x2m	1412	S	General view
76	2x2m	1409	E	General view
77	2x2m	1413	W	side showing 'M' roof
78	2x2m	1406	SE	General view
79	2x2m	1402	NW	General view
80	2x2m	1404, 1405	NW	General view
81	2x2m	1408	E	General view
82	-	1407	NE	tanks
83	2x2m	1405	NW	General view
84	1x2m	1400	SE	General view
85	2x2m	1329	NW	Internal
86	2x2m	1329	E	Internal to door
87				NOT USED
88	2x2m	1400	N	Rear
89	2x2m	1201-1203	E	General view
90	2x2m	1202, 1203	S	General view
91	1x2m	1204	SW	General view
92	-	1206	SW	Rear of visitor centre
93	2x2m	1217, 1219	SW	Garage
94	2x2m	1205	E	Novactuk security and MOD police
95	1x2m	1200	SE	General view
96	1x2m	1206	NE	Visitor Centre
97	2x2m	1206	SE	Visitor Centre
98	2x2m	1102	NW	Prefab 3 bed chalet hut
99	2x2m	1100, 1101	NW	Prefab 3 bed chalet hut
100	2x2m	1601	E	Front, computer tech centre
101	2x2m	1600, 1605	NE	cafeteria
102	2x2m	1601	NE	oblique
103	-	1907	N	Central London High School
104	2x2m	1603	NW	General view
105	2x2m	1603	S	Class of 2001 mural
106	2x2m	1603	SW	Community centre
107	-	1604	SW	Water utility
108	1x2m	1605	S	Food distribution centre
109	2x2m	1604	SE	General view
110	2x2m	1605, 1609	SE	General view
111	2x2m	1501, 1502	E	General view
112	1x2m	1502, 1503	S	General view
113	-	1522	E	General view
114	2x2m	1505-1510	SE	General view
115	1x2m	1509	SE	Community bank
116	-	1510	E	US post box
117	2x2m	1510	W	General view
118	1x2m	1525	NW	General view
119	2x2m	1500	W	Fitness centre
120	2x2m	1512	SE	General view
121	2x2m	1516, 1523	W	General view
122	2x2m	1516	N	General view
123	1x2m	1802	NW	General view
124	1x2m	1805	NE	General view
125	2x2m	1814	NW	Mansfield Hall
126	2x2m	1805	SE	General view
127	2x2m	1810	SW	Trinity Hall
128	2x2m	1819	NW	General view
129	2x2m	1907	SW	General view
130	2x2m	1819	N	Gymnasium
131	2x2m	1819	NE	Gymnasium
132	-	1810	E	General view
133	2x2m	1800	NE	Electric power standby facility
134	-	1907	NW	School

<i>Cat. No.</i>	<i>Scales</i>	<i>Location</i>	<i>Direction</i>	<i>Description</i>
135	-	1903, 1907	NW	General view
136	2x2m	1907	N	Pathway
137	2x2m	1907	SE	School
138	-	1907	SW	School
139	2x2m	1910	N	Electric intake
140	2x2m	1906	SE	Electric building
141	2x2m	1902	SE	General view
142	-	1902, 1905	S	map
143	2x2m	1905	SE	and 'tunnel'
144	-	1901	SE	Classrooms
145	2x2m	1901	NE	General view
146	2x2m	1900	NE	General view
147	-	1814	SW	Rear
148	2x2m	1301	W	General view
149	2x2m	1300, 1323	NE	Rear
150	2x2m	1323	E	Rear
151	-		S	Tennis courts
152	1x2m	1128	SW	Radio mast base
153	2x2m	1130	SW	General view
154	1x1m	ATC	S	Pair eagles
155	1x2m	1127	SW	Including flagpole
156	2x2m	1126	S	General view
157	-	1008, 1009	NE	General view
158	-	1001, 1002	SE	General view
159	-	1003	SE	General view
160	-	1006, 1007	NE	General view
161	-	1010	SW	General view
162	-	1011, 1012	SW	General view
163	-		NE	Tennis courts
164	-	1015	E	General view
165	-	1010	E	2 play parks and rear of 1010
166	-	1109	NW	entrance security
167	-	1109	SE	entrance security



**RAF Daws Hill, High Wycombe,
Buckinghamshire, 2014
Building Recording**
Figure 1. Location of site within High Wycombe and
Buckinghamshire.

Reproduced from Ordnance Survey Explorer 172 at 1:12500
Ordnance Survey Licence 100025880



DHHW 11/36

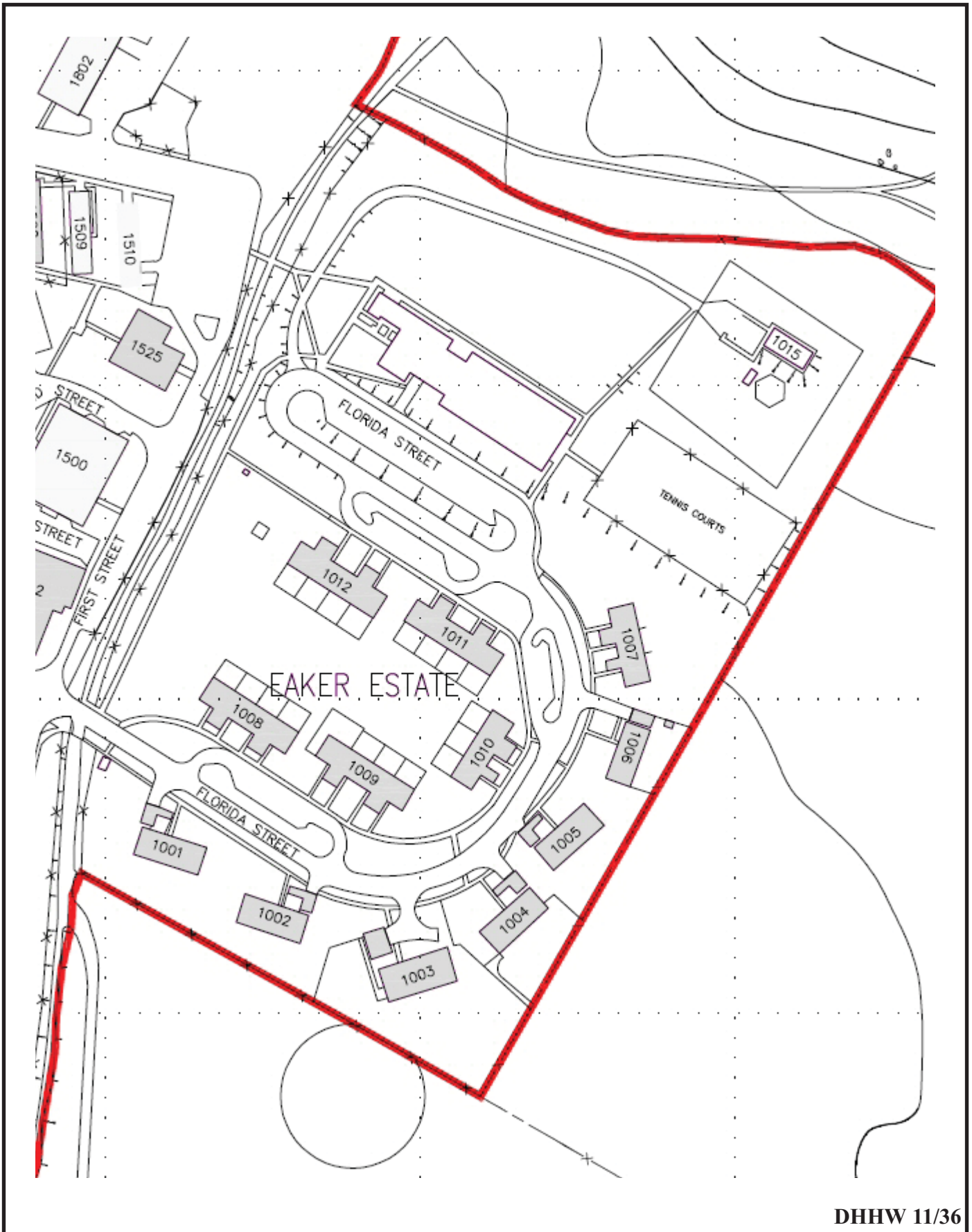


**RAF Daws Hill, High Wycombe,
Buckinghamshire, 2014
Building Recording**

Figure 2. Detailed location of site.

Reproduced from Ordnance Survey digital mapping under licence.
Crown copyright reserved. Scale: 1:5000

THAMES VALLEY
ARCHAEOLOGICAL
SERVICES



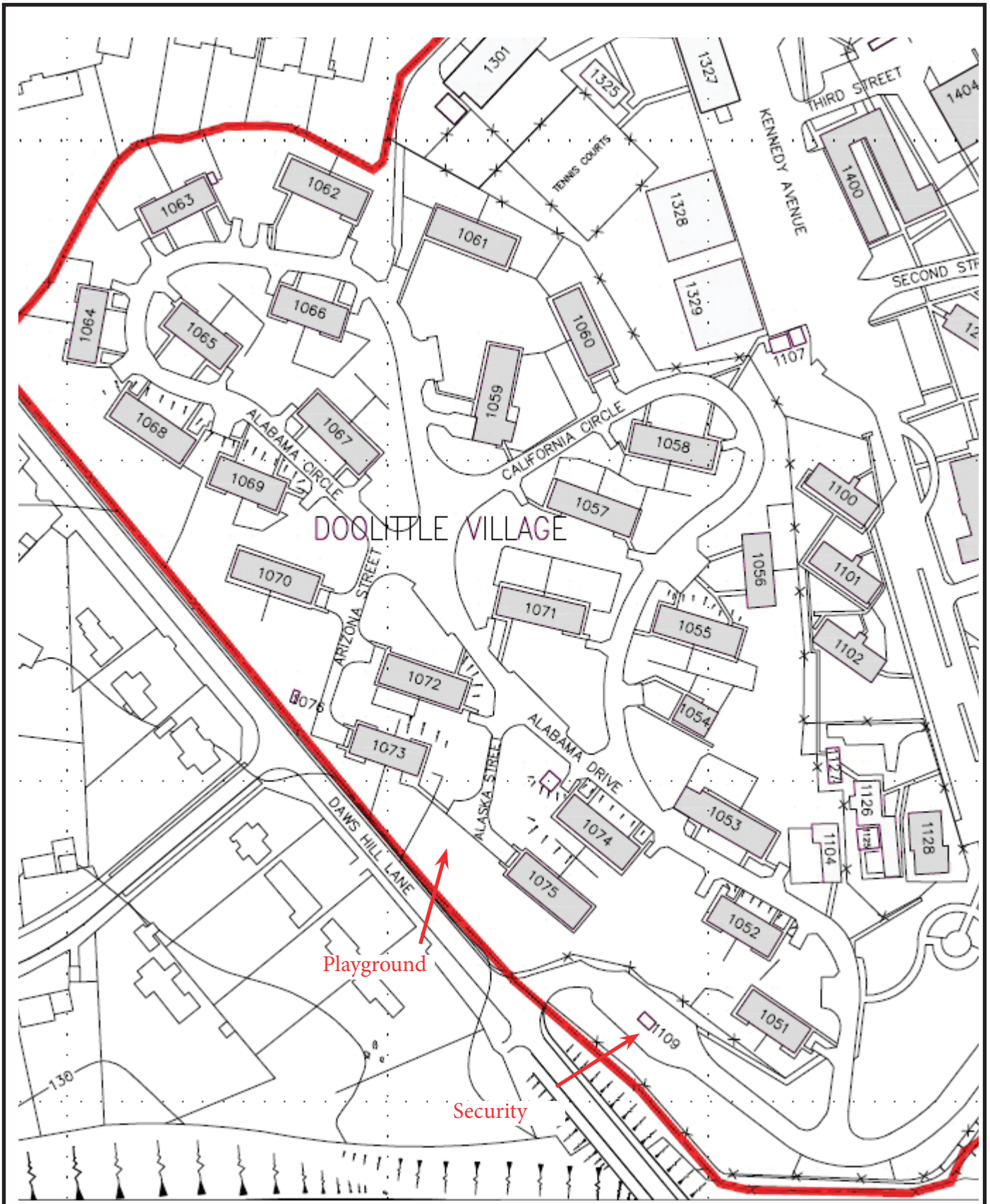
DHHW 11/36

**RAF Daws Hill, High Wycombe,
Buckinghamshire, 2014
Building Recording**

Figure 3. The Eaker Estate.

Reproduced from Ordnance Survey digital mapping under licence.
Crown copyright reserved.





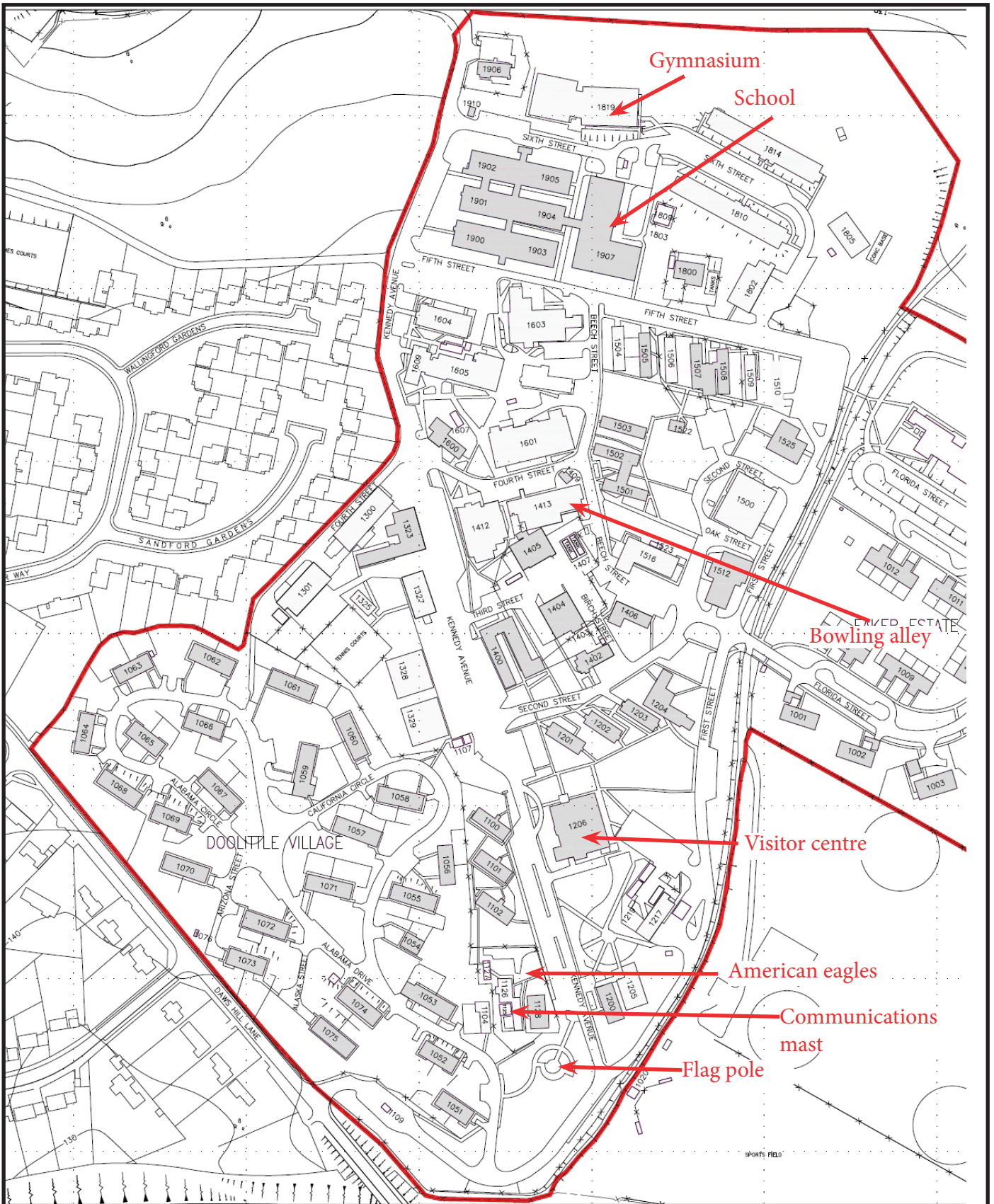
DHHW 11/36



**RAF Daws Hill, High Wycombe,
Buckinghamshire, 2014
Building Recording**
Figure 4. Doolittle Village.

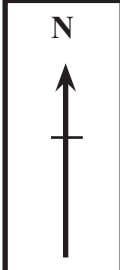
Reproduced from Ordnance Survey digital mapping under licence.
Crown copyright reserved.

THAMES VALLEY
ARCHAEOLOGICAL
SERVICES



With the permission of the Controller of Her Majesty's Stationery Office. © Crown Copyright. Entec UK Ltd. AL100001776.

DHHW 11/36



**RAF Daws Hill, High Wycombe,
Buckinghamshire, 2014
Building Recording
Figure 5. Technical Area.**

Reproduced from Ordnance Survey digital mapping under licence.
Crown copyright reserved.





Plate 1. Bungalow and terrace in the Eaker Estate, looking northeast.



Plate 2. Row of terraces in the Eaker Estate, looking northeast.



Plate 3. Play area in the Eaker Estate, looking east.



Plate 4. Tennis courts in the Eaker Estate, looking east.

DHHW 11/36

**RAF Daws Hill, High Wycombe,
Buckinghamshire, 2014
Building Recording
Plates 1 - 4.**

THAMES VALLEY
ARCHAEOLOGICAL
SERVICES



Plate 5. Bungalow in the Doolittle Estate,
looking northeast, scale: 2m.



Plate 6. Detached bungalow in the Doolittle Estate,
looking south, scale: 2m.



Plate 7. Semi-detached bungalow in the Eaker Estate,
looking southwest, scales: 2m.



Plate 8. Play area in the Doolittle Estate,
looking southwest, scales: 2m.

DHHW 11/36

**RAF Daws Hill, High Wycombe,
Buckinghamshire, 2014
Building Recording
Plates 5 - 8.**

THAMES VALLEY
ARCHAEOLOGICAL
SERVICES



Plate 9. View to the flagpole, looking northeast.



Plate 10. Prefabricated huts, blocks 1101 and 1102, looking northwest, scales: 2m.



Plate 11. Community centre, looking northeast, scales: 2m.



Plate 12. Site entrance security, looking southeast.

DHHW 11/36

**RAF Daws Hill, High Wycombe,
Buckinghamshire, 2014
Building Recording
Plates 9 - 12.**

THAMES VALLEY
ARCHAEOLOGICAL
SERVICES



Plate 13. Block 1126, looking south, scales: 2m.



Plate 14. American Eagles, looking south, scale: 1m.



Plate 15. Communications tower,
looking southwest, scale: 2m.



Plate 16. Block 1204, looking southwest, scale: 2m.

DHHW 11/36

**RAF Daws Hill, High Wycombe,
Buckinghamshire, 2014
Building Recording
Plates 13 - 16.**

THAMES VALLEY
ARCHAEOLOGICAL
SERVICES



Plate 17. Visitor centre, looking southeast, scales: 2m.



Plate 18. Garage, looking southwest, scales: 2m.



Plate 19. Blocks 1325 and 1327, looking northeast, scales: 2m.



Plate 20. Block 1328 and 1329, looking northwest, scales: 2m.

DHHW 11/36

**RAF Daws Hill, High Wycombe,
Buckinghamshire, 2014
Building Recording
Plates 17 - 20.**

THAMES VALLEY
ARCHAEOLOGICAL
SERVICES



Plate 21. Inside block 1329, looking northeast, scales 2 x 2m.



Plate 22. Block 1402, looking northwest, scales: 2m.



Plate 23. Birch Street, looking northwest, scales: 2m.



Plate 24. Tank 1407, looking northeast.

DHHW 11/36

**RAF Daws Hill, High Wycombe,
Buckinghamshire, 2014
Building Recording
Plates 21 - 24.**

THAMES VALLEY
ARCHAEOLOGICAL
SERVICES



Plate 25. Block 1412, looking south, scales: 2m.



Plate 26. Bowling alley, looking southeast, scales: 2m.



Plate 27. Fitness centre, looking west, scales: 2m.



Plate 28. Community bank, looking southeast, scales: 2m.

DHHW 11/36

**RAF Daws Hill, High Wycombe,
Buckinghamshire, 2014
Building Recording
Plates 25 - 28.**

THAMES VALLEY
ARCHAEOLOGICAL
SERVICES



Plate 29. American post box, looking east.



Plate 30. Blocks 1516 and 1523, looking west, scales: 2m.



Plate 31. Mural on the teen centre, looking south, scales: 2m.



Plate 32. Cafeteria, looking northeast, scales: 2m.



Plate 33. Block 1805, looking southeast, scales: 2 m.



Plate 34. Trinity Hall, looking southwest, scales: 2m.



Plate 35. The gymnasium, looking north, scales: 2m.



Plate 36. Classrooms, looking southeast.

DHHW 11/36

**RAF Daws Hill, High Wycombe,
Buckinghamshire, 2014
Building Recording
Plates 33 - 36.**

THAMES VALLEY
ARCHAEOLOGICAL
SERVICES



Plate 37. London Central High School, looking southwest.



Plate 38. Block 1910, looking north, scales: 2m.

DHHW 11/36

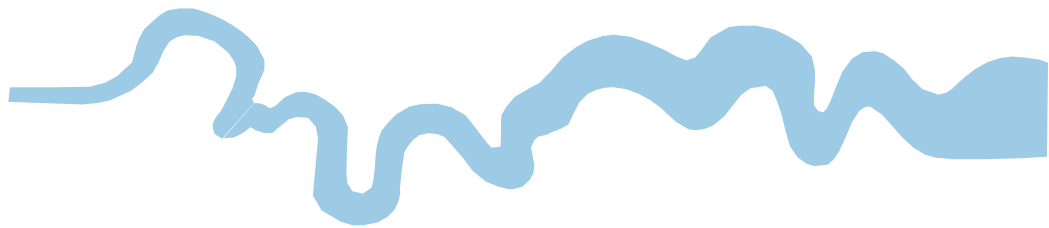
**RAF Daws Hill, High Wycombe,
Buckinghamshire, 2014
Building Recording**
Plates 37 - 38.

THAMES VALLEY
ARCHAEOLOGICAL
SERVICES

TIME CHART

	Calendar Years
Modern _____	AD 1901
Victorian _____	AD 1837
Post Medieval _____	AD 1500
Medieval _____	AD 1066
Saxon _____	AD 410
Roman _____	AD 43
Iron Age _____	BC/AD 750 BC
Bronze Age: Late -----	1300 BC
Bronze Age: Middle -----	1700 BC
Bronze Age: Early -----	2100 BC
Neolithic: Late	3300 BC
Neolithic: Early	4300 BC
Mesolithic: Late	6000 BC
Mesolithic: Early	10000 BC
Palaeolithic: Upper	30000 BC
Palaeolithic: Middle	70000 BC
Palaeolithic: Lower	2,000,000 BC





**Thames Valley Archaeological Services Ltd,
47-49 De Beauvoir Road, Reading,
Berkshire, RG1 5NR**

**Tel: 0118 9260552
Fax: 0118 9260553
Email: tvas@tvas.co.uk
Web: www.tvas.co.uk**