

T H A M E S      V A L L E Y

ARCHAEOLOGICAL

S E R V I C E S

**Bulldown Farm Barns,  
Bramley, Hampshire**

**Building Recording**

**by Genni Elliott**

**Site Code: BDB13/213**

**(SU 6637 5867)**

# **Bulldown Farm Barns, Bramley, Hampshire**

**Building Recording**

**For Rivar Ltd**

by Genni Elliott

Thames Valley Archaeological Services Ltd

Site Code BDB  
13/213

**April 2014**

## Summary

**Site name:** Bullsdown Farm Barns, Bramley, Hampshire

**Grid reference:** SU 6637 5867

**Site activity:** Building Recording

**Date and duration of project:** 19th–20th February 2014

**Project manager:** Steve Ford

**Site Supervisor:** Genni Elliott

**Site code:** BDB 13/213

**Summary of results:** Bullsdown Farm was a courtyard type farm largely constructed between 1840 and 1872 with one additional block built by 1896. Whether it incorporated earlier buildings into the courtyard arrangement is unclear. Bullsdown Farm does not appear to be a model farm in the strictest sense, whilst a courtyard layout does appear to have been a conscious decision; other buildings were added as the farm evolved to form a separate courtyard from the farmhouse.

**Location and reference of archive:** The archive is presently held at Thames Valley Archaeological Services, Reading and will be deposited with Hampshire Record Office in due course.

*This report may be copied for bona fide research or planning purposes without the explicit permission of the copyright holder. All TVAS unpublished fieldwork reports are available on our website:  
[www.tvas.co.uk/reports/reports.asp](http://www.tvas.co.uk/reports/reports.asp).*

Report edited/checked by: Steve Ford ✓ 02.04.14 Steve Preston ✓ 01.04.14
---

# **Bulldown Farm Barns, Bramley, Hampshire Building Recording**

by Genni Elliott

**Report 13/213**

## **Introduction**

This report documents the results of a building recording at Bulldown Farm Barns, Bramley, Hampshire (SU 6637 5867) (Fig. 1). The work was commissioned by Mr James Bull on behalf of Rivar Ltd, Mill House, Overbridge Square, Hambridge Lane, Newbury Berkshire, RG14 5UX.

Planning consent (appln no. BDB/75376) has been granted by Basingstoke and Deane Borough Council for the conversion and replacement of six former farm buildings to form new residences and a car port. The consent is subject to a condition (5) which requires a building recording to take place prior to redevelopment. This report documents the results of the building survey.

This is in accordance with the Department for Communities and Local Government's Planning Policy Statement, *National Planning Policy Framework* (NPPF 2012), and the Borough's policies on historic buildings. The fieldwork was undertaken by Genni Elliott and Dan Strachan on 19th–20th February 2014 and the site code is BDB 13/213.

The archive is presently held at Thames Valley Archaeological Services, Reading and will be deposited with Hampshire Record Office and a copy sent to the National Monuments Record in due course.

## **Location, topography and geology**

Bulldown Farm was located to the east of the village of Bramley and accessed from the Sherfield Road, opposite Folly Lane (Fig. 2). Housing estates are located to the east and west with Bramley Military Camp to the south. The site lies at approximately 60m above Ordnance Datum and the underlying geology is London Clay (BGS 1981).

## **Historical Background**

The manor of Bramley was mentioned in Domesday Book as having been held under Edward the Confessor by Alvrice before belonging to Hugh de Port in 1086. Its later history is tied up with Stratfield Saye and currently the lordship belongs to the Duke of Wellington. Bulldown is recorded as a separate manor from as early as the 14th century, its name coming from the family name, Bullesdon. Sometime after 1816 the manor was purchased by

the first Duke of Wellington. Bulls Down Farm is the site of the manor house (VCH 1911, 140–5). It is grade II\* listed and in the listing is described as:

‘C17. A symmetrical front (east) of 2 storeys and attic, 1:1:1 windows. Tile roof; triple flues on rectangular bases at the top of plain stacks. There is a smaller gable above the projecting centrepiece, containing a brick-moulded oval opening with a window, and with brick moulded (cavetto above arch) verge; at each side the wider taller gables have the same verge; and enclose plain window openings. Walling is in red brickwork, Flemish bond, with a deep moulded brick cornice, the plain fascia of its lower unit merging with the raised brick architraves of the windows (with rubbed flat arches), and with pilasters at each side and the sides of the centrepiece (set in from the corners and with moulded caps), a 1st floor band passing round the pilasters and merging with the architraves to the ground-floor windows, high moulded plinth. On the cheeks to the centrepiece and outside the first floor windows are oval frames with moulded brick edges; the doorway is plain. Mullion and transome wood casements; old door. The north elevation has 2 massive stacks centred on the 2 gables, with a window on each side, repeating the detail of the main front; 3 windows have been filled with brickwork (including 2 bricks incised A + M 1800 and M + M 1800). The South side of the main front has a lower 2 storeyed extension with tile roof, brick walls in English bond, and casements. The rear (west) elevation has several faces, with later changes, the main feature being the exposure of timber framing (of an earlier date) to the 2 north side gables. Staircase within of the main period.’

The adjacent granary is grade II listed and described as:

‘Early C19, Timber-frame on 6 staddles, with weather boarded walls and a slate roof.’

The nature of farming in Hampshire changed during the 17th and 18th centuries with the increasing population and the expansion of large farming estates. Historic farmstead plans in Hampshire most commonly were of the loose courtyard type, with the farmhouse forming one side of the courtyard and barns, stables, a granary and cart shed loosely arranged around a yard. Animal shelters were often added to the sides of old buildings in the 19th century. The more regular courtyard plan with linked buildings was the result of more organized management and modern systems of farming of the late 18th–19th centuries (HCC, nd). A conscious plan or design of farm buildings in the late 18th – early 19th centuries was termed a ‘model or planned farm’ (Wade Martins 2002).

Bulldown Farm was located within the North Hampshire Lowland and Heath area, which typically reflected a mixed agriculture with barns, granaries, stabling and cattle housing with plans varying from dispersed to U-shaped enclosing a yard. Farmsteads of the larger estates are thought to be more planned, especially after Enclosure, with greater investment to conform to modern farming methods of the 19th century. Typically barns

were timber-framed of 5–6 bays with weather-boarding and slate or corrugated sheet roofs, although brick buildings were present earlier than in other areas of Hampshire. Open fronted cattle sheds were also common.

A range of Ordnance Survey and other historical maps of the area were consulted online and at Hampshire Record Office to show the development of the site. The earliest map showing the farm in detail is the 1840 Bramley Tithe map (Fig. 3), which shows six buildings within the area of the main farm. Those on the west are the listed farmhouse and a now demolished building whilst those to the east are possibly part of block A, block C and another building now demolished. The First Edition Ordnance Survey map of 1872 (Fig. 4) shows significant change. Block A has been extended to the west, block B is now present abutting it to its south, block D has been built to the south of block C, which itself has been extended or replaced, and the duck pond has been added to the north of block A. The square building to the south of block C has gone. By the Second Edition Ordnance Survey map of 1896 (Fig. 5) block F has been built and more detail is shown of the link between blocks C and D. By 1911 (Fig. 6) a small extension has been added to the north side of block A. By 1967 (Fig. 7) block E has been built to the south of block C; changes to the depiction of block C are of uncertain significance and may reflect only a change of mapping style but could indicate a lean-to type addition or animal pen. By 1974 (Fig. 8) a small extension has been added to the east end of block A; subdivisions now shown within blocks C and D do not necessarily represent change, and no further changes can be seen.

## **Methodology**

The building survey was carried out in accordance with guidelines set out by the Royal Commission on Historic Monuments for a level 3 record. The survey comprised a fully analytical record of the building's development, a comprehensive photographic survey, paying attention to the methods of construction, chronological development and alterations, and features of special interest. The buildings have been recorded photographically both digitally and on 35mm format using colour print and black and white media which are catalogued (Appendix 1).

## **Description**

Bulldown Farm complex was broadly aligned NE–SW with the majority of the working buildings arranged around a courtyard with subsequent buildings to the south and a duck pond to the north (Fig. 9; Pl. 1). Entrances to the courtyard were present within the east and west ranges with pedestrian access also located in the northwest corner. The courtyard itself was formed of four blocks (labelled A–C and F) with units D and E located to the

south. The farmhouse and granary were located to the east across the trackway and are not part of this recording project (Pl. 2). For ease of discussion, the NW–SE orientation is referred to as W–E, with NE–SW treated as N–S, and so on.

### *Block A (Figs 10–12)*

Block A formed the northern range of barn buildings within the courtyard, aligned west–east, and could be split into four distinct units (labelled ‘units’ A1, A2, A3 and A4).

#### Unit A1

Unit A1 was located at the western end of block A and functioned as a garage (Pl. 3). It was accessed at the west gable end and did not form part of the courtyard. Although this is apparently on the footprint of a small extension shown on maps from 1872, it was of recent construction with a concrete floor, a modern timber frame, new weatherboarding and a new slate roof. Modern insulation materials could also be seen.

#### Unit A2

Unit A2 was located immediately to the east of unit A1 and consisted of two bays probably used as a stable. The barn was timber framed, built over a brick basal plinth and had a pitched gable-end roof covered in corrugated sheets. The floor was a mixture of concrete and brick.

The brick plinth was typically eight courses high internally with the bricks laid in Flemish bond, topped and tailed with a row of headers on the gable ends (Pl. 4). The long walls were of English bond, capped with three rows of Flemish bond and a row of headers. The walls were bonded with lime mortar. The bricks measured 231mm x 110mm x 66mm (9 <sup>1</sup>/<sub>8</sub>” x 4 <sup>5</sup>/<sub>16</sub>” x 2 <sup>9</sup>/<sub>16</sub>”).

The timber framing appeared to be of oak, though no analysis was undertaken. Where tool marks could be seen on timbers they had regular, slightly bowed, striations, suggesting that they had been converted using a mechanical band saw. The framing was raised off long lengths of cill lapped together and laid over the brick plinths. The bays were denoted by principal posts supporting the main roof trusses; they had a scantling of 180mm (7”) squared. On their internal faces they had a simple jowled head. The wall panels had diagonal braces, alternating direction on each panel. The remainder of the panel was constructed of vertical studs of varying scantling seated either on the cills or on braces. Windows had been inserted into the southern wall panels, in some cases breaking the diagonal brace. Much of the wood showed signs of re-use with empty mortices and peg holes. Some of the walls were clad internally with timber boarding.

Externally the building was clad with overlapping timber weather boarding.

Within the southern wall was an access door and within the west gable wall was a doorway giving access to unit A1; it had subsequently been blocked. Within the north wall was a small window.

Roof construction (Pl. 5) consisted of wall plates laid over the top of the principal posts behind the jowls, and the tie-beams were then laid over both of them. A pair of principal rafters supported a purlin on either side and met at a plate which supported a raised ridge plank. The truss was of queen strut construction. The tie-beam was supported on straight braces tenoned into the internal faces of the principal posts. The rafters were of quarter tree trunks.

### Unit A3

Unit A3 was located to the east of Unit A2 and together with unit A4 formed the north side of the courtyard (Pl. 6). It consisted of four unequal-sized bays and was probably most recently used as a cow shed. It was of similar construction to unit A2 with no difference seen between the brick plinths. The timber framing was also of the same construction.

Internally it had a concrete floor with a concrete manger along the north wall sub-divided by cast iron scaffold poles (Pl. 7). Within the southern wall were three doors. The two western doors were of the split stable door type whilst the easternmost door was partially set into the brick plinth. Within the east and west gable walls was a doorway giving access to units A2 and A4 respectively.

Roof construction (Pl. 8) consisted of wall plates laid over the top of the principal posts behind the jowls, and the tie-beams were then laid over both of them. A pair of principal rafters supported a purlin on either side and met at the king post which in turn supported a ridge plate. On either side of the king post was a raking strut. The tie-beam was supported on straight braces tenoned into the internal faces of the principal posts. Truss 1 had been modified and the king post and raking struts removed. Trusses 2 and 3 both had carpenters' marks on the principal posts and rafters, numbered 2 and 3 respectively. The rafters were of quarter tree trunks.

### Unit A4

Unit A4 was located at the eastern end of the block and faced onto the central courtyard. It was a threshing barn of six bays with a pair of cart shed doors located on the north and south sides in bay 3 (Pls 9 and 10). The barn was timber framed, built over a brick basal plinth and had a pitched gable-end roof covered in corrugated sheets on the south side and slates on the north side. The floor was concrete. Externally the building was clad with overlapping timber weather boarding.



The brick plinth was similar to that found in units A2 and A3 and typically eight courses high internally with the bricks laid in English bond; part of it had been rendered (Pl. 11). The walls were bonded with lime mortar. The bricks measured 231mm x 110mm x 66mm ( $9\frac{1}{8}'' \times 4\frac{5}{16}'' \times 2\frac{9}{16}''$ ) matching those in the previous units. Internally the barn had been sub-divided with a low brick wall between bays 2 and 3. It was of English bond with cement mortar to a height of 0.9m.

The timber framing can also be described identically to unit A2, and again appeared to be of oak, though no analysis was undertaken. Part of the south wall, where it met block B was clad internally with timber boarding.

Within the southern wall were four doors; two giving access to the western room, a pair of large cart shed doors within bay 3 and one into the eastern room. Within the northern wall was a pair of cart shed doors with a wagon porch (Pl. 13). The doors were of double plank construction with the wagon porch of rail and post timber frame construction. A low timber panel had been used to block each of the cart shed openings. Within the west gable wall was a doorway giving access to unit A3, now blocked. A grain hopper (Pl. 14) was located outside the east gable wall with a window cut through the wall and a small pit present in the floor.

Roof construction (Pl. 15) consisted of wall plates laid over the top of the principal posts behind the jowls, and the tie-beams were then laid over both of them. A pair of principal rafters supported a purlin on either side and met at a plate which supported a raised ridge plank. The truss was of queen strut construction. The tie-beam was supported on straight braces tenoned into the internal faces of the principal posts. Valley rafters (Pl. 16) were present in the south roof within bays 5 and 6 where block B was joined to block A. Some of the trusses had been replaced.

### *Block B (Figs 10, 13, 14)*

Block B formed the eastern side of the courtyard and was aligned north–south. It was a five bay threshing barn with cart shed doors located within bay 3 opening into the courtyard on the west side and the fields on the east side (Pls 17–19). The east side had a wagon porch roof. The barn was timber framed, built over a brick basal plinth and had a pitched gable-end roof covered in corrugated sheets on the west side and slates on the east side. The floor was concrete.

The brick plinth was similar to that found in unit A3 and typically eight courses high internally with the bricks laid in English bond; part of it had been rendered. The walls were bonded with lime mortar. The bricks measured a very slightly different 226mm x 108mm x 68mm ( $8\frac{7}{8}'' \times 4\frac{1}{4}'' \times 2\frac{11}{16}''$ ).

The timber framing (Pl. 20) appeared to be of oak, though no analysis was undertaken. Where tool marks could be seen on timbers they had regular, slightly bowed, striations, suggesting that they had been converted using a mechanical band saw. The framing was raised off of long lengths of cill lapped together and laid over the brick plinths. The bays were denoted by principal posts supporting the main roof trusses; they had a scantling of 180mm (7") squared. On their internal faces they had a simple jowled head. The wall panels had diagonal braces, alternating direction on each panel. The remainder of the panel was constructed of vertical studs of varying scantling seated either on the cills or braces. Much of the wood showed signs of re-use with empty mortices and peg holes. Externally the building was clad with overlapping timber weather boarding.

Within the western wall were three doors; one of which was a pair of large cart shed doors within bay 3, both of the smaller doors at either end had been partially blocked with concrete blocks. Within the eastern wall was a pair of cart shed doors with a wagon porch. The cart shed doors were of double plank construction with the wagon porch of rail and post timber frame construction. The apex of the wagon porch had been boarded over and a pigeon loft constructed (Pl. 21). A low timber panel had been used to block each of the cart shed openings.

Roof construction (Pl. 22) consisted of wall plates laid over the top of the principal posts behind the jowls, and the tie-beams were then laid over both of them. A pair of principal rafters supported a purlin on either side and met at a plate which supported a raised ridge plank. The truss was of queen strut construction. The tie-beam was supported on straight braces tenoned into the internal faces of the principal posts. Carpenters marks were present on trusses 1 and 2, suggesting that the construction was a kit of parts with the queen struts labelled II and VI with corresponding marks on the tie beam.

### *Block C (Figs 15, 16)*

Block C formed the southern range of buildings forming the courtyard, aligned east–west (Pls 23 & 24). It could be split into three distinct units (labelled C1, C2 and C3). To the rear of block C was a small hard standing constructed out of dummy mines (Pl. 25).

#### Unit C1

Unit C1 was located at the eastern end of the block and consisted of a two-bay room. The room was of mixed timber frame and brick construction with a pitched gable-end roof covered in slates. The floor was concrete. The walls on the east, south and west side were of brick construction, with the west wall shared with unit C2, whilst the north wall was timber.

The timber wall was built off a concrete plinth and consisted of vertical posts tenoned into mortices in the cill and wall plate. Externally the wall was clad with overlapping timber weather boarding. A door was located to the west of the principal post (Pl. 26).

The east gable wall (Pl. 27) was built off a brick plinth consisting of at least five courses of English bond brickwork, with the bricks measuring 230mm x 107mm x 73mm (9 <sup>1</sup>/<sub>16</sub>" x 4 <sup>1</sup>/<sub>4</sub>" x 2 <sup>7</sup>/<sub>8</sub>") and bonded with lime mortar. At the north and south ends of the plinth was a brick pillar. The plinth had been extended to the south to form a courtyard. Within the brick pillars it was infilled with Flemish bonded brickwork, which was not well tied into the pillars.

The south wall was a later extension to the south wall of unit C2. It was of similar construction to the east gable wall with a brick pilaster in the centre of the wall. The lower part of the wall had been bonded into the south wall of unit C2, but the higher courses of brick had not.

The west wall was that of unit C2 and will be discussed below.

Roof construction (Pl. 28), most likely of oak, consisted of wall plates laid over the top of the principal post behind the jowl, with the tie-beam then laid over both of them. A pair of principal rafters supported a purlin on either side and met at the king post. On either side of the king post was a raking strut. The tie-beam was supported on straight braces tenoned into the internal face of the principal post. A pair of slightly arched braces, tenoned into the principal post supported the wall plate.

### Unit C2

Unit C2 formed the central section of the block and functioned as a hayloft with storage or animal pens beneath. Both units C1 and C3 were built onto the walls of unit C2. The building was of four bay brick construction (Pl. 29) with a pitched gable end roof, covered in slate. The floor was of concrete. Access to the hayloft was via a wooden ladder (Pl. 30) attached to the east gable wall. In front of the unit was a raised cobbled path.

The walls were built off a brick plinth laid in English bond and bonded in lime mortar, at least four courses high. The bricks were of mixed sizes, including some Tudor bricks. Above the plinth the bricks were laid in Flemish bond which measured 225mm x 110mm x 66mm (9 <sup>7</sup>/<sub>8</sub>" x 4 <sup>3</sup>/<sub>8</sub>" x 2 <sup>5</sup>/<sub>8</sub>"). The north wall was symmetrical with a door with loft access above at each end and two windows of barred wooden construction in the centre. Above each of the doors and windows was a flat arch. Internally were three brick pilasters. The south wall contained three supporting brick pilasters.

Roof construction (Pl. 31), most likely of oak, consisted of timber wall plates laid over the brick work with interrupted tie beams tenoned into queen posts which in turn were supported on the floor joists. The floor joists

were supported on the brick pilasters. The truss itself had a collar and the purlins were staggered. The principal rafters were of squared wood, whilst the common rafters were split tree trunks.

### Unit C3

Unit C3 was located at the western end of the block and was probably used as storage and/or to house animals. It was of wooden plank construction (Pl. 32), built up against the western wall of unit C2 and built off the south courtyard wall. Internally it was sub-divided in two with a plank wall. The roof sloped slightly from north to south and was covered with corrugated iron sheets. The floor was of concrete and concrete blocks had been used at the western end to form a low plinth to support the timber planks. In the centre of the western room was a concrete trough (Pl. 33).

### *Block D*

Block D was located to the south of the main courtyard, fronting onto the trackway and aligned north–south. It could be split into two distinct units (D1 and D2).

### Unit D1 (Fig. 17)

Unit D1 was an approximately square building in the southwest corner of the courtyard and accessed both from the courtyard and trackway (Pl. 34). The floor was of concrete with brick walls laid in approximately Flemish bond, and bonded in lime mortar with cement mortar re-pointing. The bricks measured 232mm x 110mm x 70mm (9 1/8" x 4" x 2 3/4"). No roof remained. Internally the walls had been plastered. On the north and east faces were blocked windows. On the west face was a narrow window that had been boarded over.

### Unit D2 (Fig. 18)

Unit D2 was located to the south of D1 and fronted onto the trackway. It was in a highly dilapidated state, with no roof and partially tumbled down walls (Pl. 35). The floor was of concrete with a small concrete plinth present towards the north end, subdividing the building in two. The north wall was also the rear wall of D1, which formed the south wall to the courtyard. It was laid in Flemish bond with clamp fired bricks (Pl. 36). The east and south walls were of brick and flint construction bonded with lime mortar. The walls were arranged in panels, sub-divided with brick pillars. Externally (Pl. 37) the panels were of roughly dressed flint nodules, internally (Pl. 38) they were a combination of roughly dressed flint nodules and brick headers laid on the diagonal. The wall was capped with a row of stretchers and a row of headers. The bricks varied substantially in size with

thicknesses between 40mm–60mm (1  $\frac{9}{16}$ "–2  $\frac{3}{8}$ "). The narrower bricks were likely to have been Tudor in date and reused from another source. On the east wall was a date stone (Pl. 39) with the initials 'M+S [backwards] + 1839.' Its non prominent position would also suggest re-use from another source.

### *Block E (Fig. 19)*

Block E was located to the south of the courtyard block of buildings and was probably previously used to house pigs. It was formed of two parts; a brick built, covered area and a concrete block yard area, which may have been a later addition (Pl. 40). The brick shed had a concrete foundation, upon which a single skin of bricks was laid in stretcher in bond, bonded with cement mortar. At either end was a supporting buttress and pillar. Internally the building was subdivided into six pens separated with English bond brick walls, topped with a soldier course. The roof would have been a half-gable. Evidence survived in the south wall for windows. Wooden doors would originally have been present separating the covered pen from the external pen, with wooden gates penning the external area.

### *Block F (Figs 20 and 21)*

Block F formed the western range of buildings forming the courtyard and was aligned north–south (Pls. 41 & 42). It could be sub-divided into two distinct units (labelled F1 and F2).

#### Unit F1

Unit F1 formed the northern section of the block and was a stable (Pl. 43). It was entirely of brick construction, with a brick floor and a pitched gable end roof covered in corrugated metal sheet. The walls were of Flemish garden wall bond, bonded in lime mortar. The bricks measured 223mm x 107mm x 64mm (8  $\frac{3}{4}$ " x 4  $\frac{1}{4}$ " x 2  $\frac{1}{2}$ "). The west wall extended along the length of block F and appeared to be of a single construction with a brick plinth running along the base and six brick pilasters along its length, similar in construction to block C. A window was present at the north end into unit F1. The stable door was located in the north wall, facing onto unit A2. Above the opening was a flat arch. The roof construction was obscured but was probably the same as that in unit F2. Internally (Pl. 44) the west and north walls were partially covered with painted vertical planks, a wall mounted hay basket was located in the south-west corner (Pl. 45).

## Unit F2

Unit F2 formed the southern section of the block and was a four bay animal shed. It was of mixed brick and timber construction with a concrete floor and a pitched gable end roof covered in corrugated metal sheet. The northern wall was brick, being the dividing wall between units F1 and F2 and the western wall was the continuation of that within F1. The south and east walls were of timber frame construction built onto a brick basal plinth (Pl. 46).

The brick plinth was similar to that found in block C with the bricks laid in English bond. The timber framing appeared to be of pine, though no analysis was undertaken. Internally the lower walls were rendered, obscuring the lower part of the timber frame. The bays were denoted by principal posts and brick pilasters supporting the main roof trusses. The wall panels had diagonal braces, alternating direction on each panel. The remainder of the panel was constructed of vertical studs. Externally the building was clad with overlapping timber weather boarding.

Within the eastern wall were four doors; with the ones at the north and south ends being slightly larger with windows above and the two central doors being of split stable door type. The north and south doors may originally have been the same width as the windows above.

Roof construction (Pl. 47) consisted of wall plates laid over the top of the principal posts and the tie-beams laid over both of them. A pair of principal rafters supported a purlin on either side and met at a raised ridge plank. The truss was of queen strut construction. The tie-beam was supported on straight braces tenoned into the internal faces of the principal posts or set into the wall.

The space was divided internally with rendered walls, beside which was a concrete trough (Pl. 48).

## **Interpretation**

Units A2, A4 and block B were of a similar build with brick plinths, timber framed structures and queen strut roof trusses. It is not clear whether units A2 and A4 are the buildings shown on the tithe map or whether those buildings were demolished and new structures erected, or indeed whether they were incorporated into the courtyard layout found by the time of the 1872 Ordnance Survey map. Block B is certainly a later addition. If unit A4 is that shown on the tithe map then it was probably extended to accommodate the joining of Block B's roof, with bay 5 made smaller and bay 6 added. Unit C2 may also be that shown on the tithe map. It was brick built on a brick plinth, with a queen post roof, different from every other building.

Along with the duck pond, units A3, C1 and block D were constructed between 1840 and 1872. Units A3 and C1, whilst externally being of a similar construction to their neighbours, each had a later king post roof. No roof remained on block D for comparison.

Block F represented a later phase of construction, though similar in build to both blocks A and C. It also had a queen strut roof and was built between 1872 and 1896. Block E was a modern addition.

Units A2, A4, B and C2 are probably amongst the earliest buildings and would appear to be a conscious design decision to create a courtyard layout which included the farm house. It is not clear whether unit D2 was built at this time or was part of the second phase of construction. The second phase of construction occurred prior to 1872 and included units A3 and C1. By this time the duck pond had also been constructed. Unit F represents a third phase of construction, occurring by 1896. It is less clear when the smaller units were added.

## Conclusion

Bulldown Farm was a courtyard type farm largely constructed between 1840 and 1872. Whether it incorporated earlier buildings into the courtyard arrangement is unclear, due to the reuse of materials and the lack of change in farm buildings. The addition of a number of buildings between 1840 and 1872 to create a courtyard with the cart shed immediately to the south would suggest a degree of planning being involved. Initially it would appear that the Farmhouse and granary formed the western side of the courtyard with additional buildings to the south, opposite the cart shed. By 1896 and the addition of block F a more complete courtyard was formed. Bulldown Farm does not appear to be a model farm in the strictest sense, whilst a courtyard layout does appear to have been a conscious decision; other buildings were added as the farm evolved to form a separate courtyard from the farmhouse.

## References

- BGS, 1981, *British Geological Survey*, 1:50,000, Sheet 284, Solid and Drift Edition, Keyworth
- HCC, nd: *Historic Farm Buildings in Hampshire*, Hampshire County Council
- NPPF 2012, *National Planning Policy Framework*, Dept Communities and Local Govt, London
- RCHME, 1996, *Recording Historic Buildings: a descriptive specification*, 3rd edn, Roy Comm Hist Monuments (England), London
- VCH, 1911, *Victoria County History of Hampshire*, vol iv, London
- Wade Martins, S, 1998, *Model Farmsteads, Thematic Survey: Consultative report for English Heritage Listing Team*, London
- Wade Martins, S, 2002, *The English Model Farm Building the Agricultural Ideal, 1700–1914*, Cheshire

## APPENDIX 1: Photographic Catalogue

### A. Digital

<i>Cat. No.</i>	<i>Scales</i>	<i>Location</i>	<i>Direction</i>	<i>Description</i>
1	1m+2m	Exterior	E	General shot of unit D
2	1m+2m	Exterior	E	West face of unit C
3	1m+2m	Exterior	NE	Oblique of unit F
4	1m+2m	Exterior	E	West face of unit A
5	1m+2m	Exterior	N	South face of unit A – W end
6	1m+2m	Exterior	N	South face of unit A – E end
7	1m+2m	Exterior	E	West face of unit B
8	1m+2m	Exterior	S	North face of unit C
9	1m+2m	Exterior	W	East face of unit F
10	1m+2m	Exterior	N	South face of unit B
11	1m+2m	Exterior	W	East face of unit B
12	1m+2m	Exterior	SW	Oblique of unit A
13	-	Exterior	E	Dated brick M+S 1839, unit D
14	1m+2m	Exterior	W	East face of unit C
15	-	Exterior	N	South face of unit C – E end
16	1m+2m	Exterior	N	South face of unit C – W end
17	1m+2m	Exterior	W	East face of unit D
18	1m+2m	Exterior	E	West face of unit E
19	1m+2m	Exterior	NW	Oblique of unit E
20	1m+2m	Exterior	W	East face of unit E
21	1m+2m	Exterior	S	North face of unit E
22	1m+2m	Exterior	SW	Oblique of unit E
23	1m+2m	Exterior	SE	Oblique of unit E
24	1m+2m	Exterior	S	'Interior' of unit D – S facing
25	1m+2m	Exterior	N	'Interior' of unit D – N facing
26	-	Exterior	W	South face of unit C
27	1m+2m	Exterior	NW	General shot of 'courtyard' area
28	1m+2m	Exterior	NE	General shot of 'courtyard' area
29	1m+2m	Exterior	S	North face of unit D
30	-	Exterior	N	South face of unit D
31	-	Exterior	NE	Oblique of unit D
32	1m+2m	Exterior	SW	Oblique of unit F
33	-	Interior	W	Oblique of roof truss – Unit A
34	1m+2m	Interior	W	East facing interior of unit A
35	1m+2m	Interior	W	East facing interior of unit A – portrait
36	1m+2m	Interior	N	South facing interior of unit A
37	1m+2m	Interior	E	West facing interior of unit A
38	1m+2m	Interior	W	East facing interior of unit A
39	-	Interior	W	Trusses 1+2 – Unit A
40	1m+2m	Interior	NW	Concrete troughs Oblique – Unit A
41	1m+2m	Interior	SE	Timber framework oblique – Unit A
42	1m+2m	Interior	W	East facing interior of unit A
43	1m+2m	Interior	E	West facing interior of unit A
44	1m+2m	Interior	NE	Oblique of interior door – Unit A
45	-	Interior	E	Truss at east end of unit A
46	1m+2m	Interior	SW	Oblique of interior door – Unit A
47	2m	Exterior	W	Exterior 'funnel' – Unit A
48	1m+2m	Interior	NW	Oblique of interior wall – Unit B
49	-	Interior	S	End/connecting wall of unit B
50	1m+2m	Interior	N	End/connecting wall of unit A
51	1m+2m	Interior	S	North facing interior of unit B
52	-	Interior	E	West facing interior cart-shed door – Unit B
53	1m+2m	Interior	NW	Oblique of interior wall – Unit B
54	1m+2m	Interior	SE	Oblique of interior wall – Unit B
55	-	Interior	S	Truss at north/centre of unit B
56	1m+2m	Interior	E	West facing interior wall of unit C
57	1m+2m	Interior	N	South facing interior wall of unit C
58	1m+2m	Interior	E	West facing interior wall of unit C
59	-	Interior	W	Hayloft of unit C
60	1m+2m	Interior	NW	Oblique of interior wall – Unit C
61	1m+2m	Interior	SW	Oblique of interior wall – Unit C
62	1m+2m	Interior	SE	Oblique of interior wall – Unit C
63	1m+2m	Exterior	E	External shot of W end of unit C
64	1m+2m	Interior	S	Internal shot of 'trough' room – Unit C
65	2m	Interior	S	North facing interior wall of unit F
66	2m	Interior	SE	Oblique of interior wall – Unit F
67	-	Interior	S	Middle truss – Unit F



<i>Cat. No.</i>	<i>Scales</i>	<i>Location</i>	<i>Direction</i>	<i>Description</i>
68	1m+2m	Interior	W	Stall of unit F
69	-	Exterior	SW	General shot of Farm House
70	1m+2m	Interior	SE	Oblique of interior wall – Unit F
71	1m+2m	Interior	NW	Oblique of interior wall – Unit F

## B. Colour Prints

<i>Cat. No.</i>	<i>Scales</i>	<i>Location</i>	<i>Direction</i>	<i>Description</i>
1	1m+2m	Exterior	E	General shot of unit D
2	1m+2m	Exterior	E	West face of unit C
3	1m+2m	Exterior	NE	Oblique of unit F
4	1m+2m	Exterior	E	West face of unit A
5	1m+2m	Exterior	N	South face of unit A – W end
6	1m+2m	Exterior	N	South face of unit A – E end
7	1m+2m	Exterior	E	West face of unit B
8	1m+2m	Exterior	S	North face of unit C
9	1m+2m	Exterior	W	East face of unit F
10	1m+2m	Exterior	N	South face of unit B
11	1m+2m	Exterior	W	East face of unit B
12	1m+2m	Exterior	SW	Oblique of unit A
13	-	Exterior	E	Dated brick M+S 1839, unit D
14	1m+2m	Exterior	W	East face of unit C
15	-	Exterior	N	South face of unit C – E end
16	1m+2m	Exterior	N	South face of unit C – W end
17	1m+2m	Exterior	W	East face of unit D
18	1m+2m	Exterior	E	West face of unit E
19	1m+2m	Exterior	NW	Oblique of unit E
20	1m+2m	Exterior	W	East face of unit E
21	1m+2m	Exterior	S	North face of unit E
22	1m+2m	Exterior	SW	Oblique of unit E
23	1m+2m	Exterior	SE	Oblique of unit E
24	1m+2m	Exterior	S	'Interior' of unit D – S facing
25	1m+2m	Exterior	N	'Interior' of unit D – N facing
26	-	Exterior	W	South face of unit C
27	1m+2m	Exterior	NW	General shot of 'courtyard' area
28	1m+2m	Exterior	NE	General shot of 'courtyard' area
29	1m+2m	Exterior	S	North face of unit D
30	-	Exterior	N	South face of unit D
31	-	Exterior	NE	Oblique of unit D
32	1m+2m	Exterior	SW	Oblique of unit F
33	-	Interior	W	Oblique of roof truss – Unit A
34	1m+2m	Interior	W	East facing interior of unit A
35	1m+2m	Interior	W	East facing interior of unit A – portrait
36	1m+2m	Interior	N	South facing interior of unit A
37	1m+2m	Interior	E	West facing interior of unit A
38	1m+2m	Interior	W	East facing interior of unit A
39	-	Interior	W	Trusses 1+2 – Unit A
40	1m+2m	Interior	NW	Concrete troughs Oblique – Unit A
41	1m+2m	Interior	SE	Timber framework oblique – Unit A
42	1m+2m	Interior	W	East facing interior of unit A
43	1m+2m	Interior	E	West facing interior of unit A
44	1m+2m	Interior	NE	Oblique of interior door – Unit A
45	-	Interior	E	Truss at east end of unit A
46	1m+2m	Interior	SW	Oblique of interior door – Unit A
47	2m	Exterior	W	Exterior 'funnel' – Unit A
48	1m+2m	Interior	NW	Oblique of interior wall – Unit B
49	-	Interior	S	End/connecting wall of unit B
50	1m+2m	Interior	N	End/connecting wall of unit A
51	1m+2m	Interior	S	North facing interior of unit B
52	-	Interior	E	West facing interior cart-shed door – Unit B
53	1m+2m	Interior	NW	Oblique of interior wall – Unit B
54	1m+2m	Interior	SE	Oblique of interior wall – Unit B
55	-	Interior	S	Truss at north/centre of unit B
56	1m+2m	Interior	E	West facing interior wall of unit C
57	1m+2m	Interior	N	South facing interior wall of unit C
58	1m+2m	Interior	E	West facing interior wall of unit C
59	-	Interior	W	Hayloft of unit C
60	1m+2m	Interior	NW	Oblique of interior wall – Unit C
61	1m+2m	Interior	SW	Oblique of interior wall – Unit C

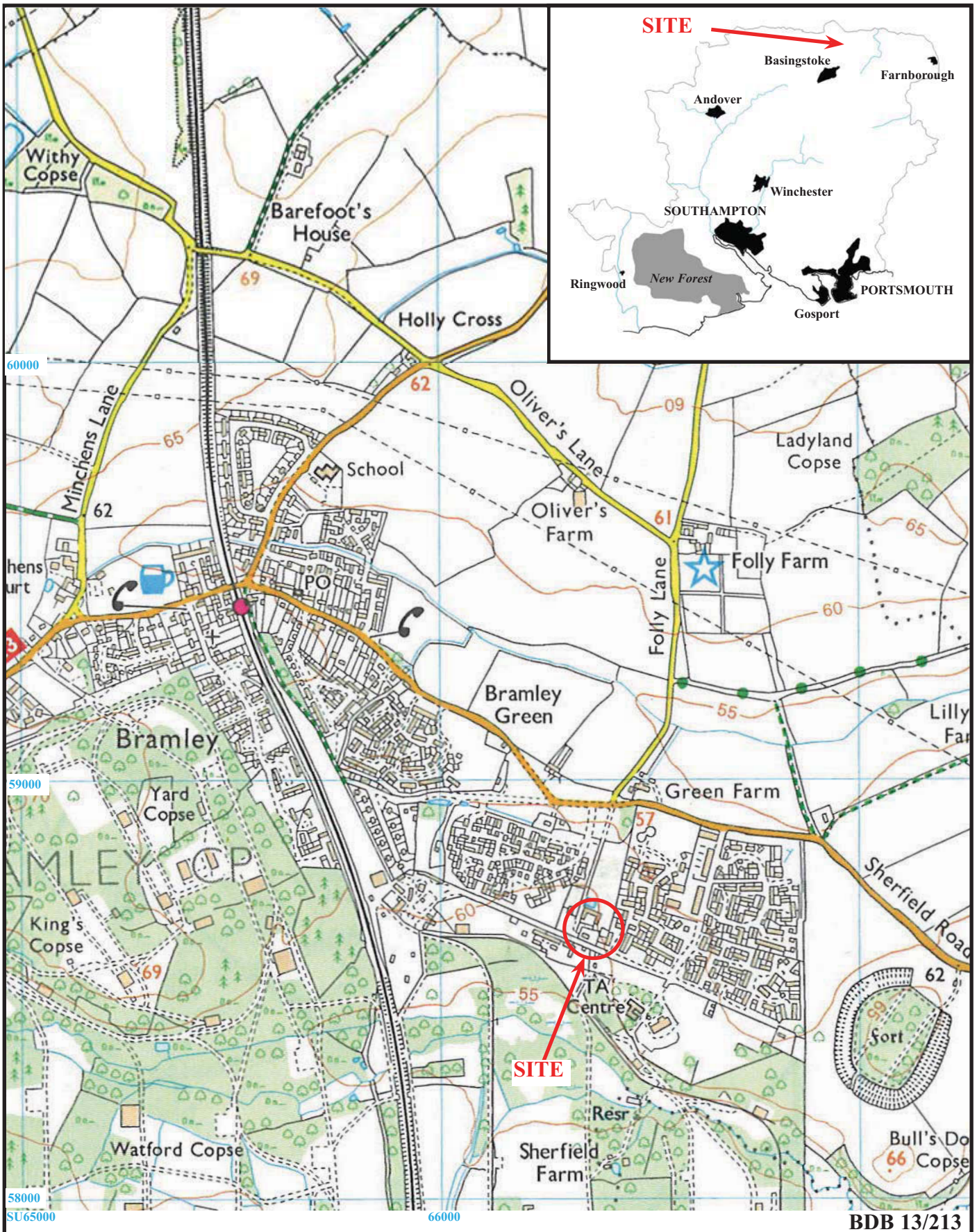
<i>Cat. No.</i>	<i>Scales</i>	<i>Location</i>	<i>Direction</i>	<i>Description</i>
62	1m+2m	Interior	SE	Oblique of interior wall – Unit C
63	1m+2m	Exterior	E	External shot of W end of unit C
64	1m+2m	Interior	S	Internal shot of 'trough' room – Unit C
65	2m	Interior	S	North facing interior wall of unit F
66	2m	Interior	SE	Oblique of interior wall – Unit F
67	-	Interior	S	Middle truss – Unit F
68	1m+2m	Interior	W	Stall of unit F
69	-	Exterior	SW	General shot of Farm House
70	1m+2m	Interior	SE	Oblique of interior wall – Unit F
71	1m+2m	Interior	NW	Oblique of interior wall – Unit F

### C. Monochrome Images

<i>Cat. No.</i>	<i>Scales</i>	<i>Location</i>	<i>Direction</i>	<i>Description</i>
1	1m+2m	Exterior	E	General shot of unit D
2	1m+2m	Exterior	E	West face of unit C
3	1m+2m	Exterior	NE	Oblique of unit F
4	1m+2m	Exterior	E	West face of unit A
5	1m+2m	Exterior	N	South face of unit A – W end
6	1m+2m	Exterior	N	South face of unit A – E end
7	1m+2m	Exterior	E	West face of unit B
8	1m+2m	Exterior	S	North face of unit C
9	1m+2m	Exterior	W	East face of unit F
10	1m+2m	Exterior	N	South face of unit B
11	1m+2m	Exterior	W	East face of unit B
12	1m+2m	Exterior	SW	Oblique of unit A
13	-	Exterior	E	Dated brick M+S 1839, unit D
14	1m+2m	Exterior	W	East face of unit C
15	-	Exterior	N	South face of unit C – E end
16	1m+2m	Exterior	N	South face of unit C – W end
17	1m+2m	Exterior	W	East face of unit D
18	1m+2m	Exterior	E	West face of unit E
19	1m+2m	Exterior	NW	Oblique of unit E
20	1m+2m	Exterior	W	East face of unit E
21	1m+2m	Exterior	S	North face of unit E
22	1m+2m	Exterior	SW	Oblique of unit E
23	1m+2m	Exterior	SE	Oblique of unit E
24	1m+2m	Exterior	S	'Interior' of unit D – S facing
25	1m+2m	Exterior	N	'Interior' of unit D – N facing
26	-	Exterior	W	South face of unit C
27	1m+2m	Exterior	NW	General shot of 'courtyard' area
28	1m+2m	Exterior	NE	General shot of 'courtyard' area
29	1m+2m	Exterior	S	North face of unit D
30	-	Exterior	N	South face of unit D
31	-	Exterior	NE	Oblique of unit D
32	1m+2m	Exterior	SW	Oblique of unit F
33	-	Interior	W	Oblique of roof truss – Unit A
34	1m+2m	Interior	W	East facing interior of unit A
35	1m+2m	Interior	W	East facing interior of unit A – portrait
36	1m+2m	Interior	N	South facing interior of unit A
37	1m+2m	Interior	E	West facing interior of unit A
38	1m+2m	Interior	W	East facing interior of unit A
39	-	Interior	W	Trusses 1+2 – Unit A
40	1m+2m	Interior	NW	Concrete troughs Oblique – Unit A
41	1m+2m	Interior	SE	Timber framework oblique – Unit A
42	1m+2m	Interior	W	East facing interior of unit A
43	1m+2m	Interior	E	West facing interior of unit A
44	1m+2m	Interior	NE	Oblique of interior door – Unit A
45	-	Interior	E	Truss at east end of unit A
46	1m+2m	Interior	SW	Oblique of interior door – Unit A
47	2m	Exterior	W	Exterior 'funnel' – Unit A
48	1m+2m	Interior	NW	Oblique of interior wall – Unit B
49	-	Interior	S	End/connecting wall of unit B
50	1m+2m	Interior	N	End/connecting wall of unit A
51	1m+2m	Interior	S	North facing interior of unit B
52	-	Interior	E	West facing interior cart-shed door – Unit B
53	1m+2m	Interior	NW	Oblique of interior wall – Unit B
54	1m+2m	Interior	SE	Oblique of interior wall – Unit B
55	-	Interior	S	Truss at north/centre of unit B

<i>Cat. No.</i>	<i>Scales</i>	<i>Location</i>	<i>Direction</i>	<i>Description</i>
56	1m+2m	Interior	E	West facing interior wall of unit C
57	1m+2m	Interior	N	South facing interior wall of unit C
58	1m+2m	Interior	E	West facing interior wall of unit C
59	-	Interior	W	Hayloft of unit C
60	1m+2m	Interior	NW	Oblique of interior wall – Unit C
61	1m+2m	Interior	SW	Oblique of interior wall – Unit C
62	1m+2m	Interior	SE	Oblique of interior wall – Unit C
63	1m+2m	Exterior	E	External shot of W end of unit C
64	1m+2m	Interior	S	Internal shot of 'trough' room – Unit C
65	2m	Interior	S	North facing interior wall of unit F
66	2m	Interior	SE	Oblique of interior wall – Unit F
67	-	Interior	S	Middle truss – Unit F
68	1m+2m	Interior	W	Stall of unit F
69	-	Exterior	SW	General shot of Farm House
70	1m+2m	Interior	SE	Oblique of interior wall – Unit F
71	1m+2m	Interior	NW	Oblique of interior wall – Unit F





**Bulldown Farm Barns, Bramley,  
Hampshire, 2014  
Building Recording**

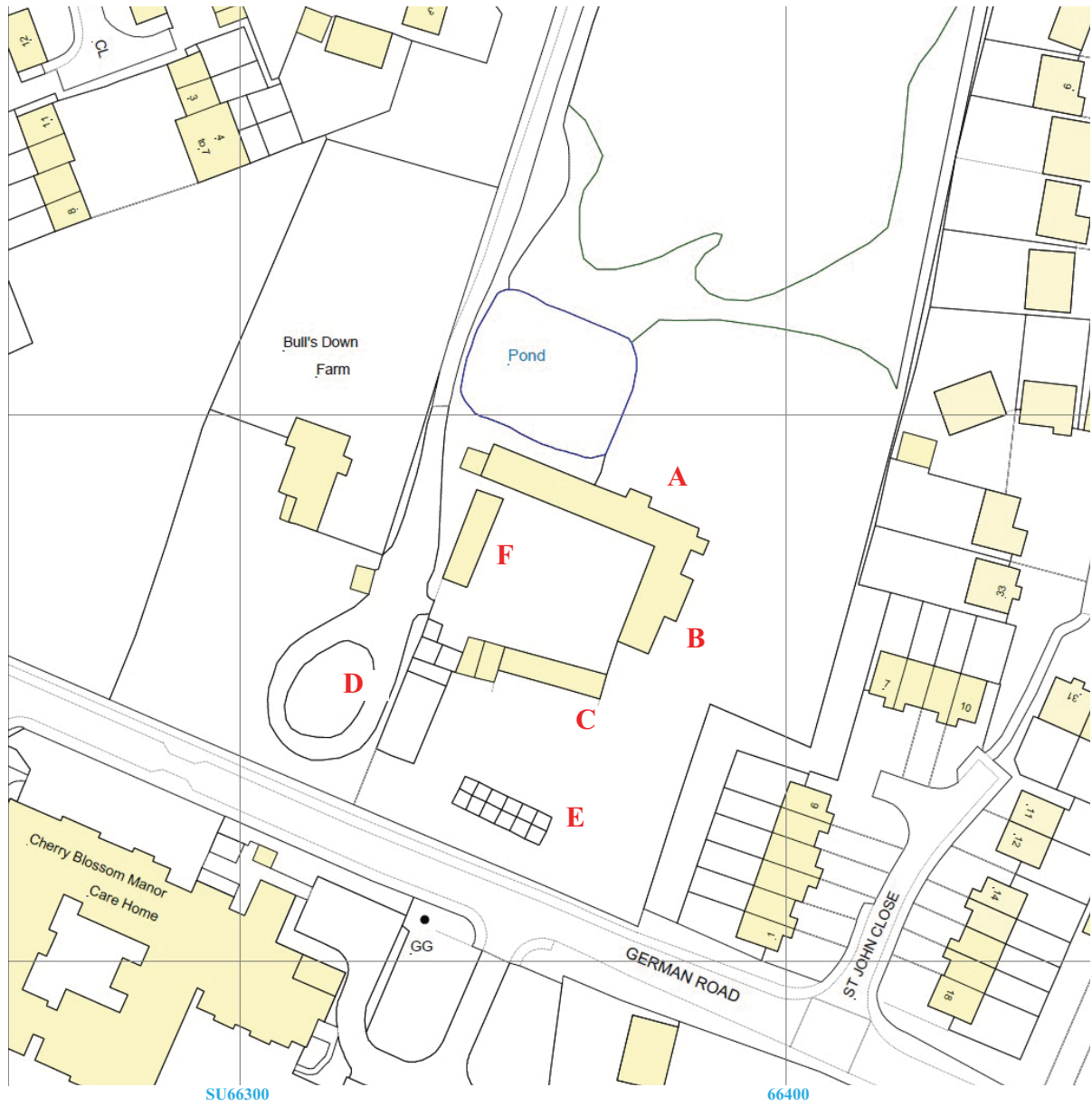
Figure 1. Location of site within Bramley and Hampshire.

Reproduced from Ordnance Survey Explorer 144 and 159 at 1:12500  
Ordnance Survey Licence 100025880

THAMES VALLEY  
ARCHAEOLOGICAL  
SERVICES

BDB 13/213





BDB 13/213

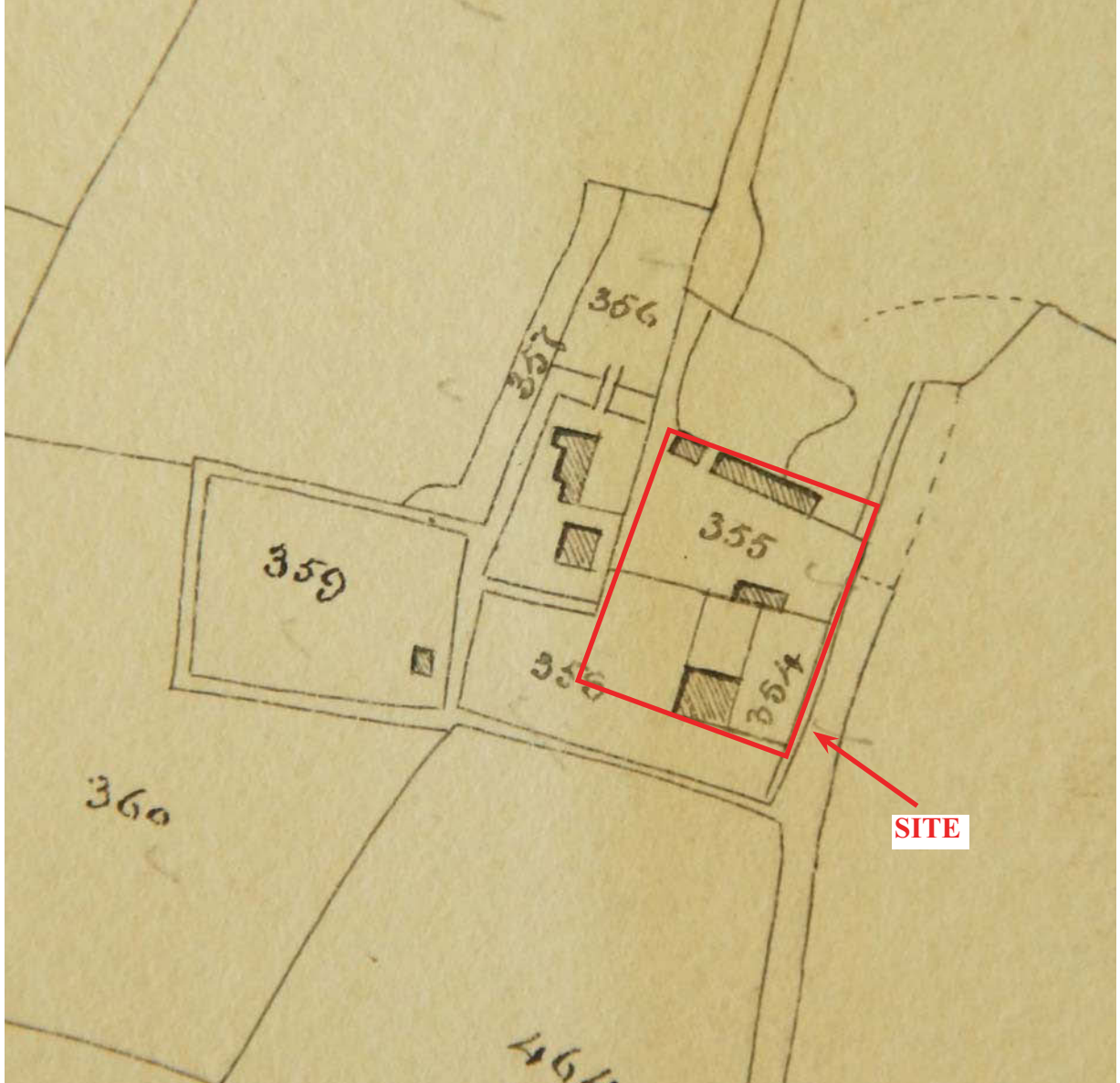


**Bulldown Farm Barns, Bramley,  
Hampshire, 2014  
Building Recording**

Figure 2. Detailed location of site, with sequence of buildings labelled.

Reproduced from Ordnance Survey Digital Mapping under licence.  
Crown copyright reserved. Scale 1:1250

THAMES VALLEY  
ARCHAEOLOGICAL  
SERVICES



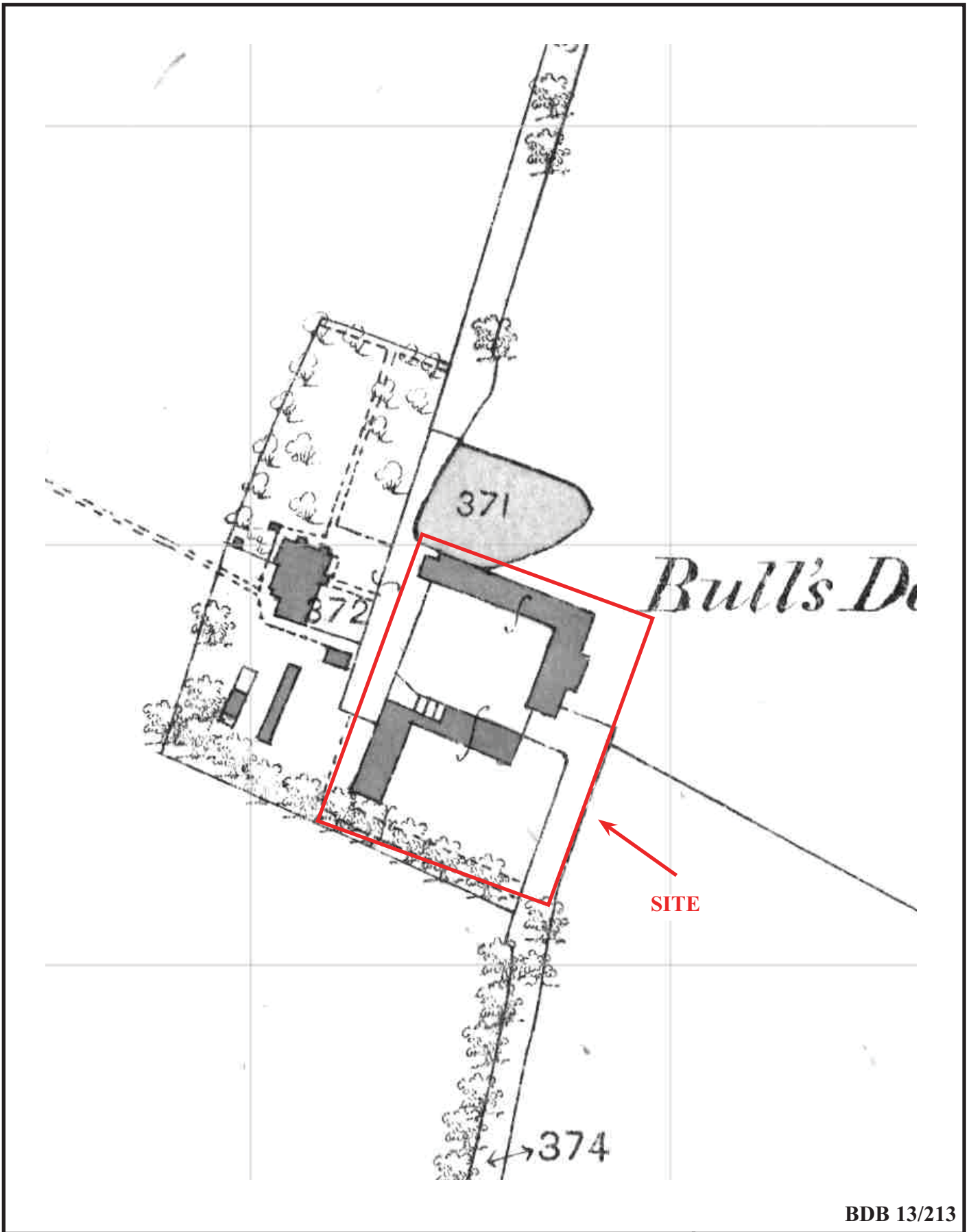
BDB 13/213



**Bulldown Farm Barns, Bramley,  
Hampshire, 2014  
Building Recording**

Figure 3. Bramley Tithe Map, 1840

THAMES VALLEY  
ARCHAEOLOGICAL  
SERVICES



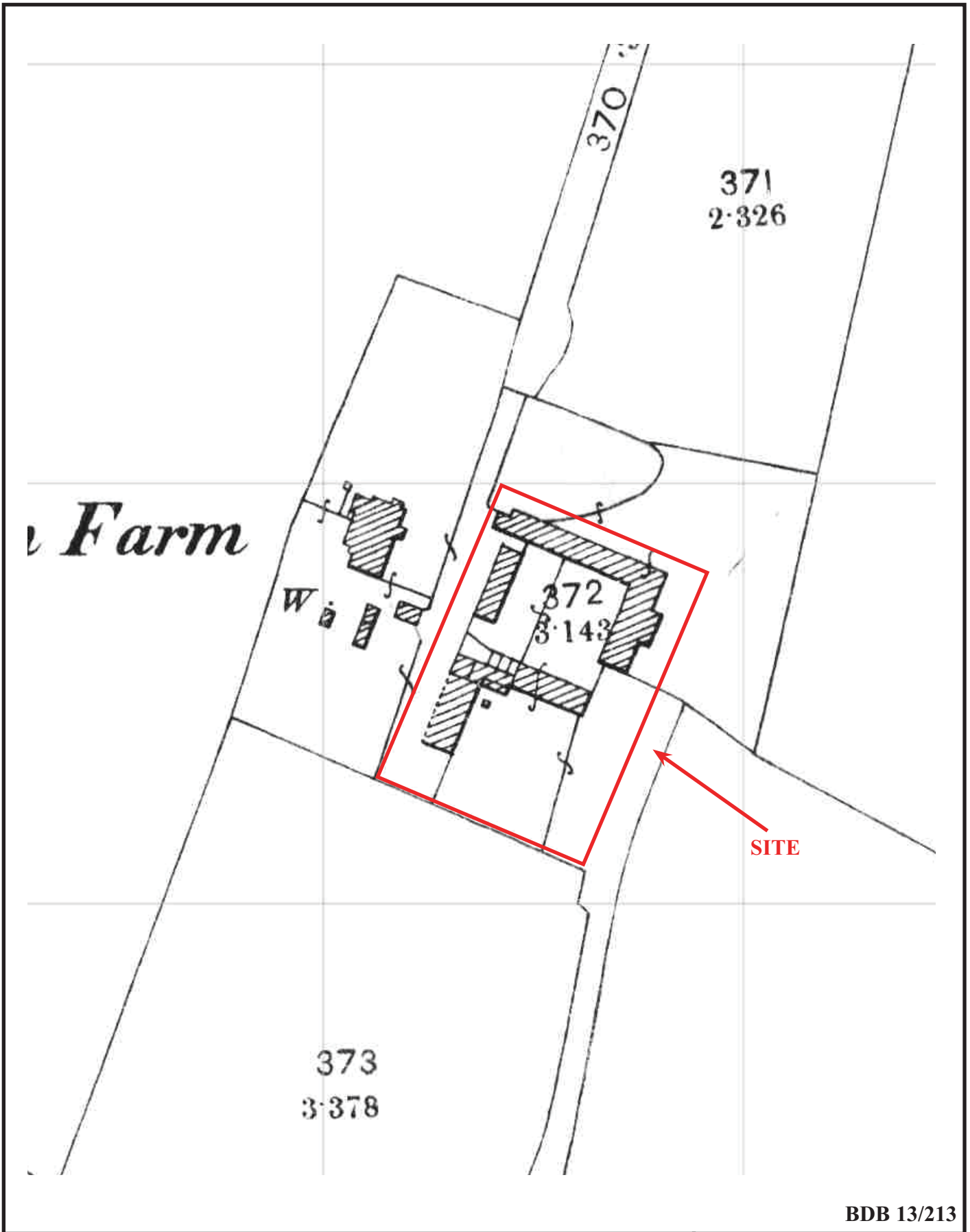
BDB 13/213



**Bulldown Farm Barns, Bramley,  
Hampshire, 2014  
Building Recording**

Figure 4. First Edition Ordnance Survey Map, 1872

THAMES VALLEY  
ARCHAEOLOGICAL  
SERVICES



BDB 13/213

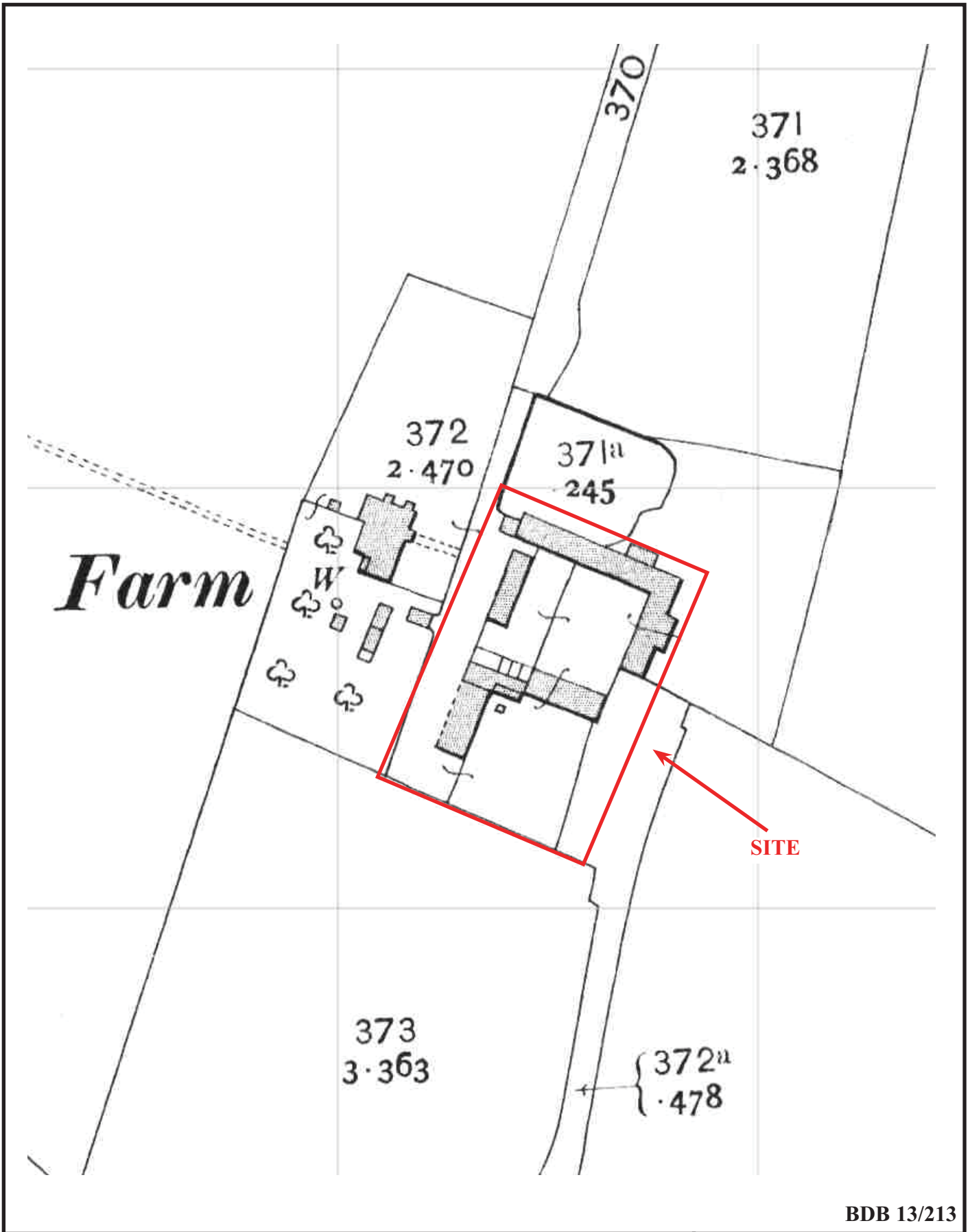


**Bullstown Farm Barns, Bramley,  
Hampshire, 2014  
Building Recording**

Figure 5. Second Edition Ordnance Survey Map, 1896.

THAMES VALLEY  
ARCHAEOLOGICAL  
SERVICES





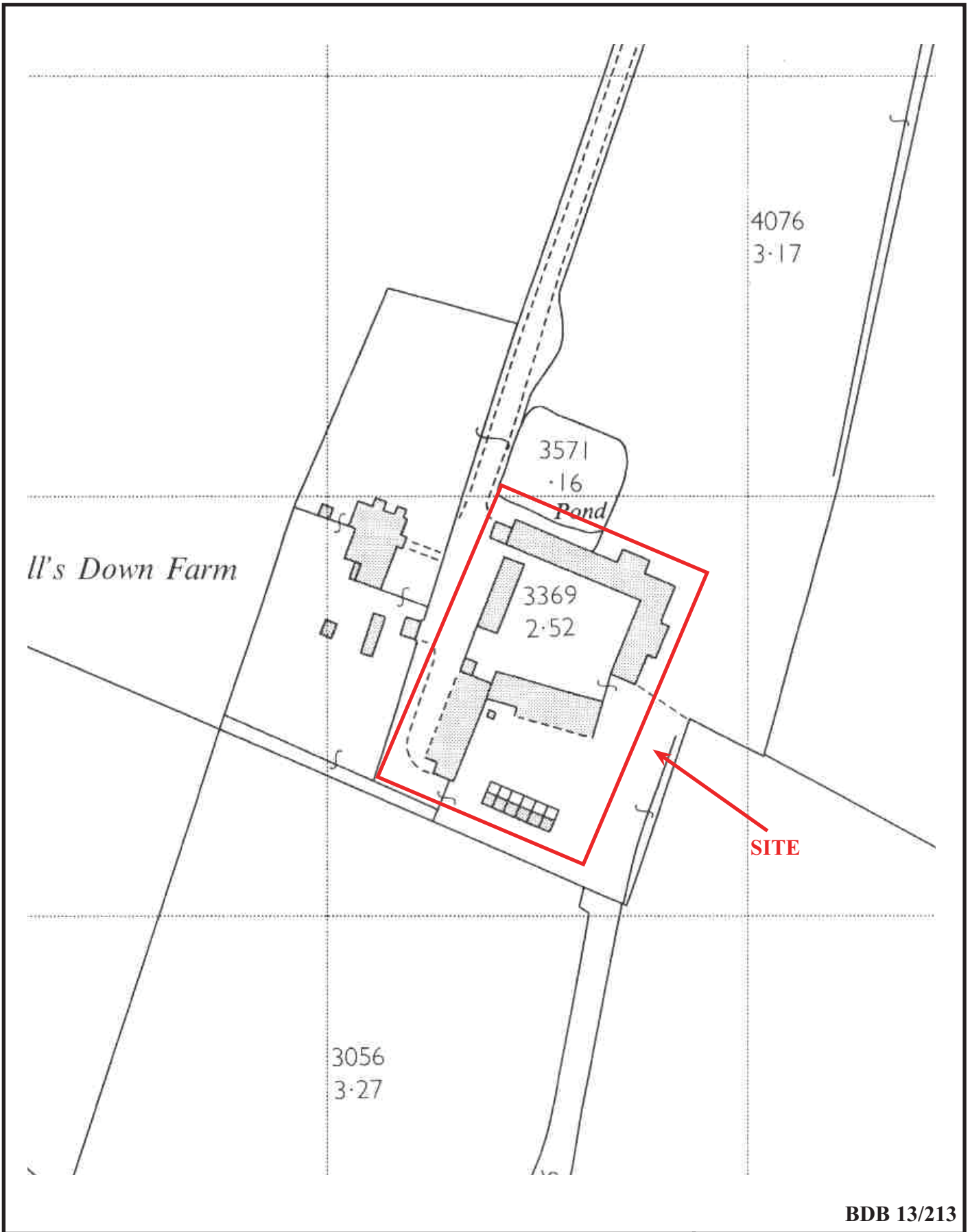
BDB 13/213



**Bullsdown Farm Barns, Bramley,  
Hampshire, 2014  
Building Recording**

Figure 6. Third Edition Ordnance Survey Map, 1911.

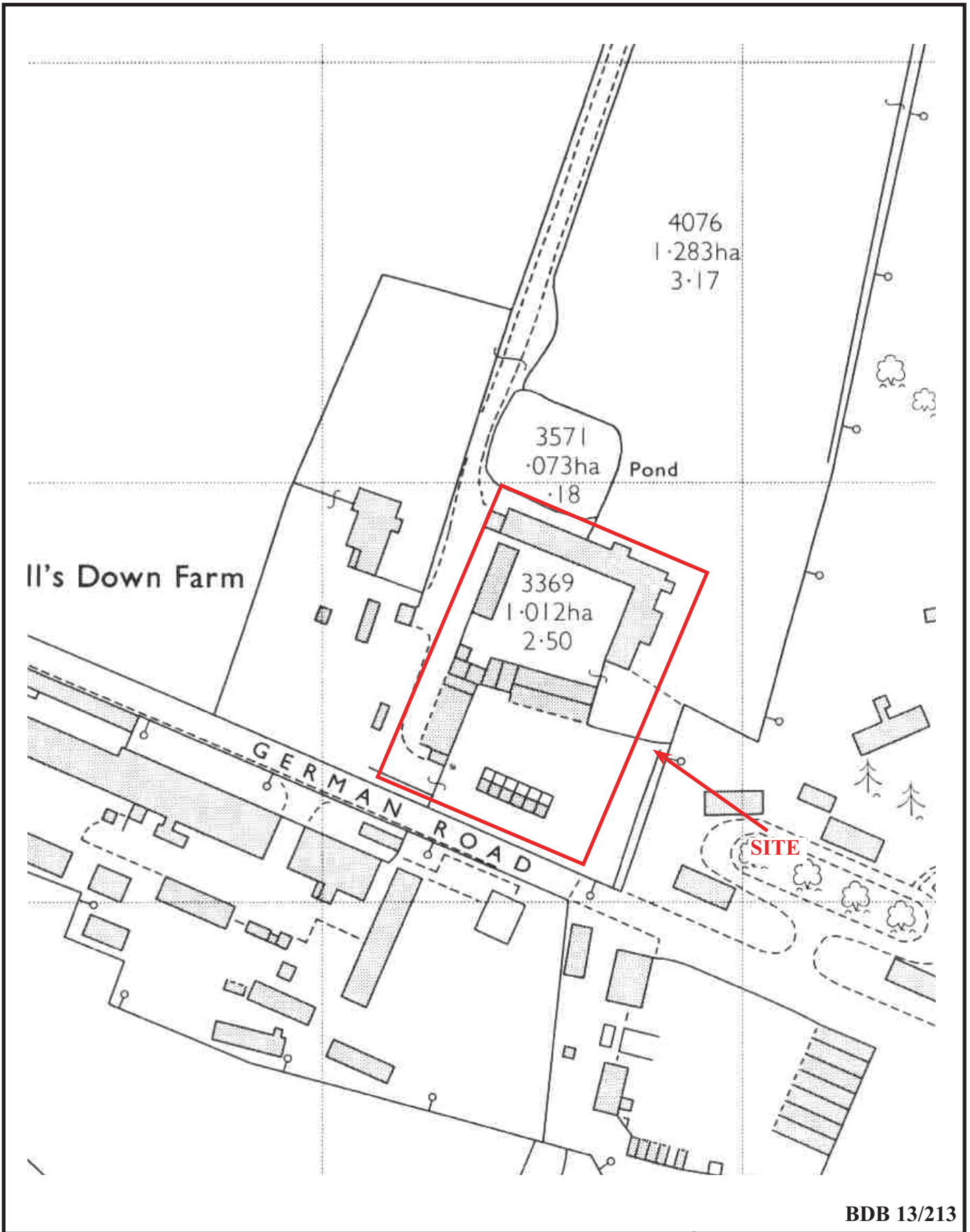
THAMES VALLEY  
ARCHAEOLOGICAL  
SERVICES



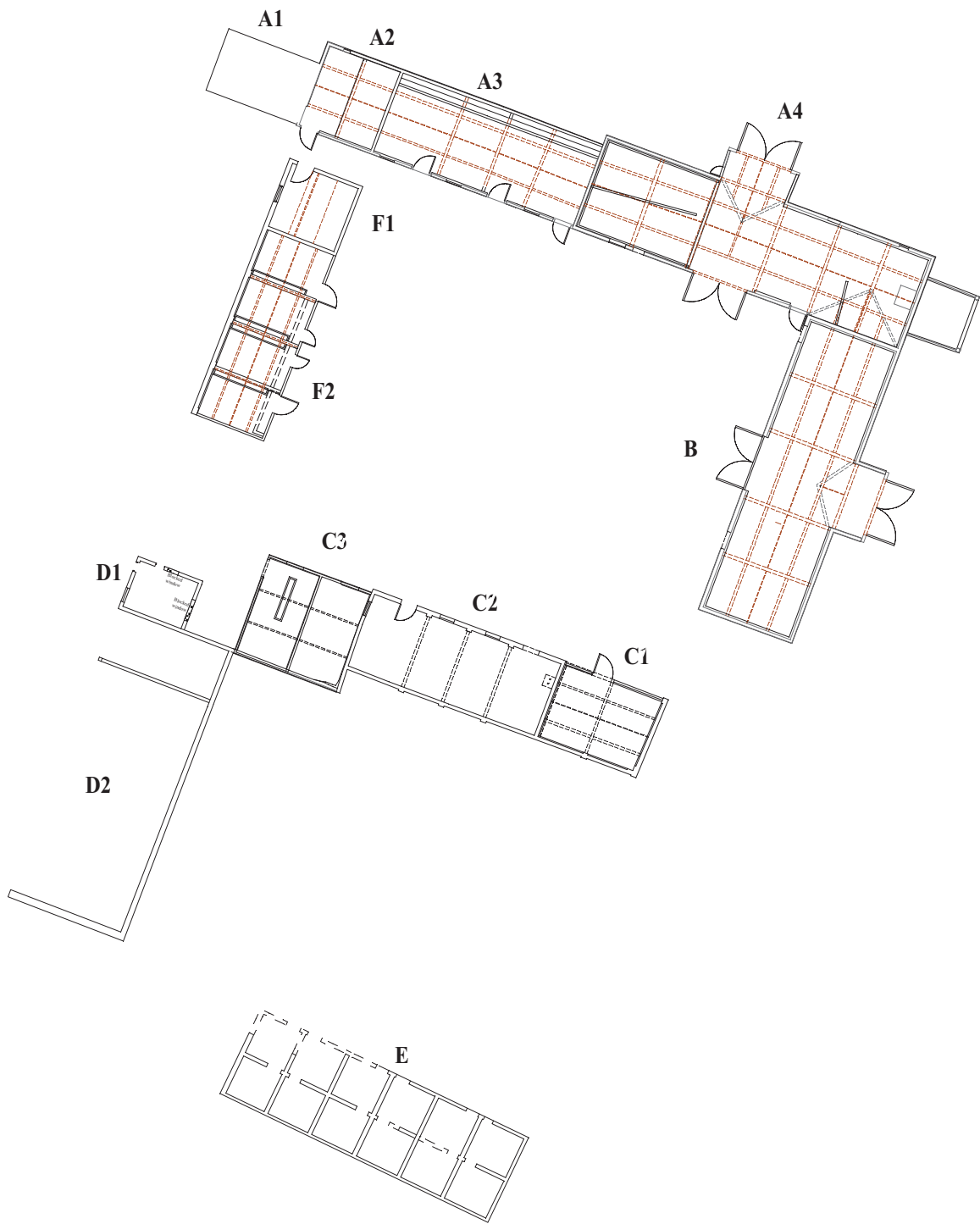
BDB 13/213



**Bullsdow Farm Barns, Bramley,  
Hampshire, 2014  
Building Recording**  
Figure 7. Ordnance Survey Map, 1967.



**Bullsdown Farm Barns, Bramley,  
Hampshire, 2014  
Building Recording**  
Figure 8. Ordnance Survey Map, 1974.



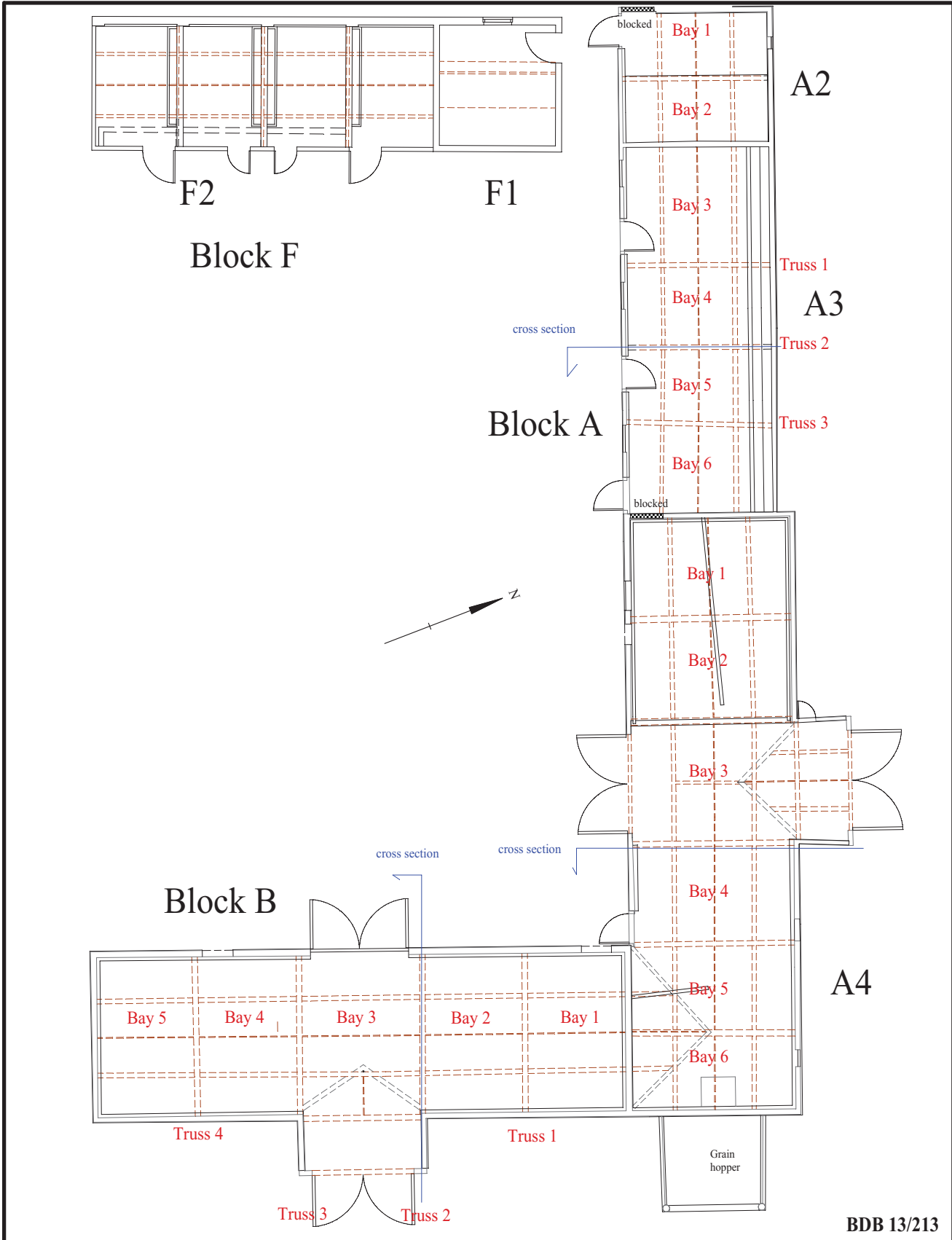
BDB 13/213

**Bullsdow Farm Barns, Bramley,  
Hampshire, 2014  
Building recording**

Figure 9. Site layout



THAMES VALLEY  
ARCHAEOLOGICAL  
SERVICES



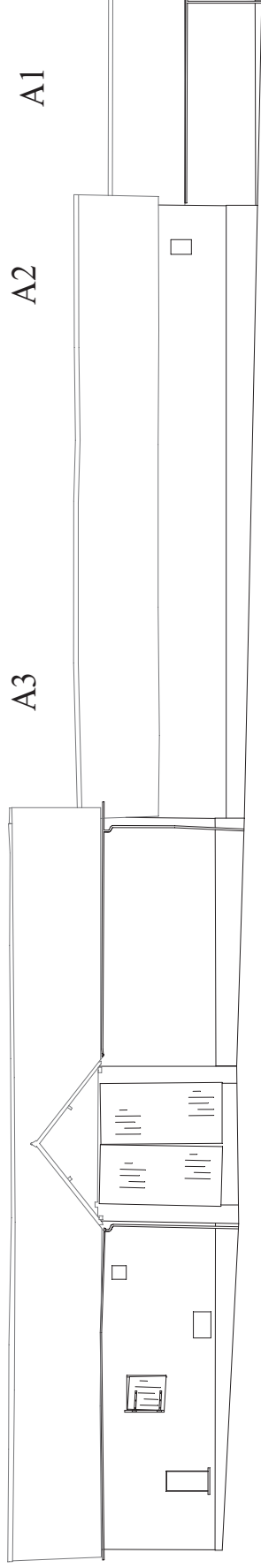
BDB 13/213

**Bullsdown Farm Barns, Bramley,  
Hampshire, 2014  
Building recording**

Figure 10. Blocks A, B and F.

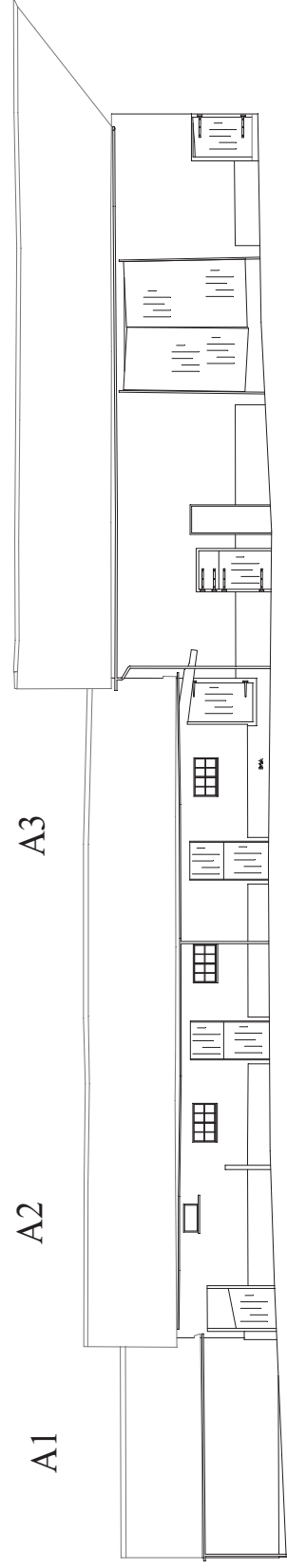


A4



North elevation

A4



South elevation

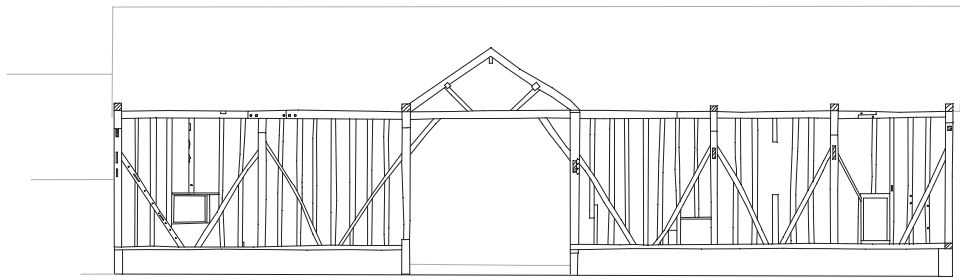
BDB 13/213

**Bulldown Farm Barns, Bramley,  
Hampshire, 2014  
Building Recording**

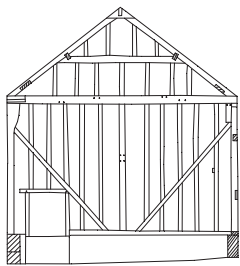
Figure 11. Block A Elevations



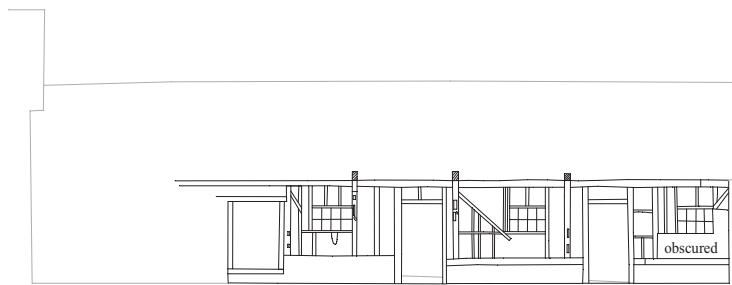




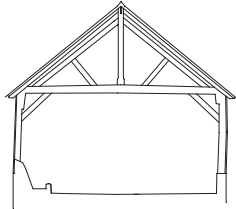
Interior structural framework on Northern elevation - Unit A4



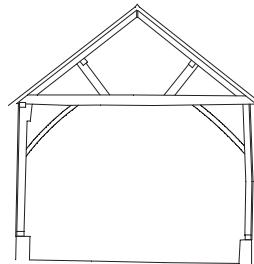
Structural frame on Gable end Western elevation - Unit A3



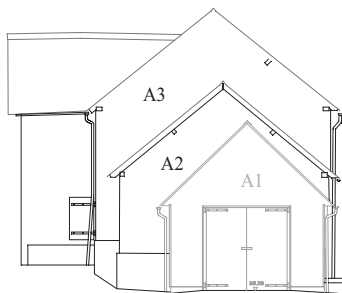
Interior structural framework on Southern elevation - Unit A3



Truss in Unit A3



Truss in Unit A4



West elevation

Modern Garage  
not shown on fig. 10

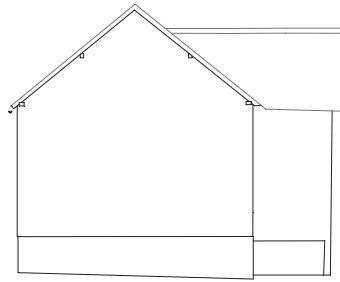
BDB 13/213

**Bulldown Farm Barns, Bramley,  
Hampshire, 2014  
Building Recording**

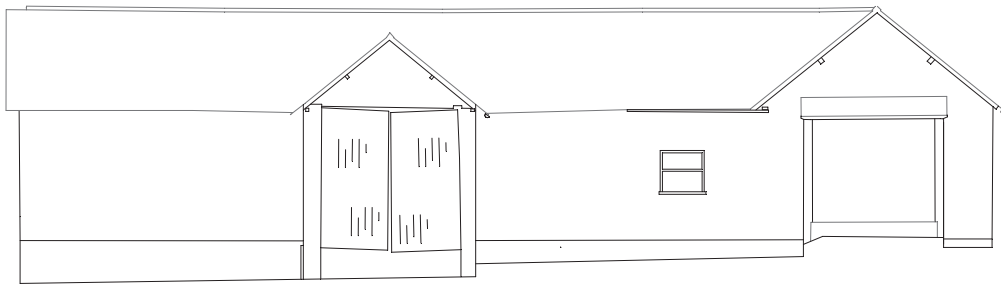
Figure 12. Structure of Block A.



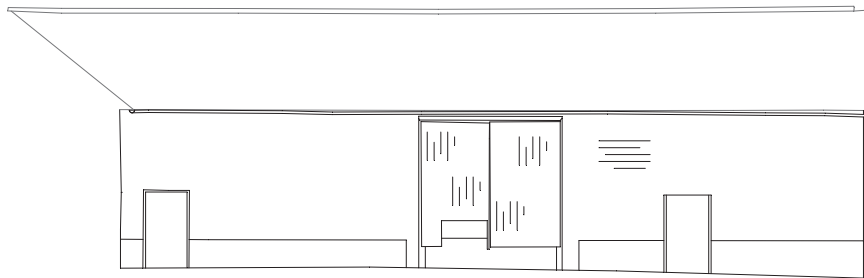
THAMES VALLEY  
ARCHAEOLOGICAL  
SERVICES



South elevation



East elevation



West elevation

BDB 13/213

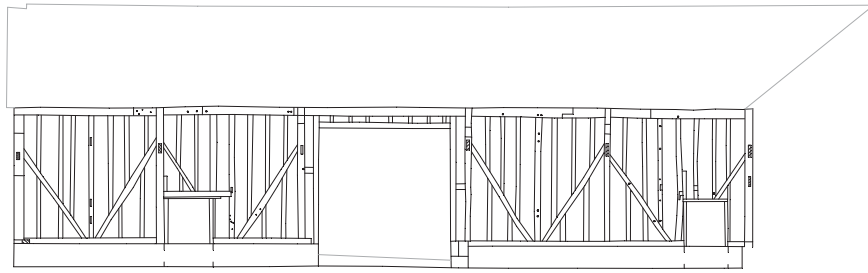
**Bulldown Farm Barns, Bramley,  
Hampshire, 2014  
Building Recording**

Figure 13. Elevations from Barn B.

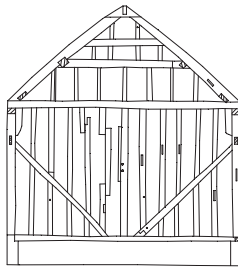


THAMES VALLEY  
ARCHAEOLOGICAL  
SERVICES

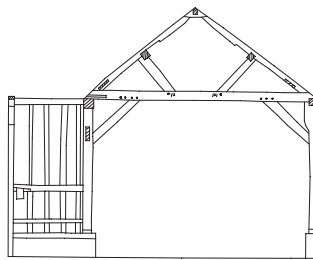




Interior structural framework on Western elevation



Structural frame on gable end  
Southern elevation



Truss through Block B

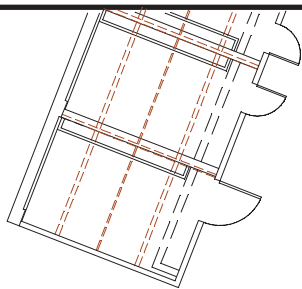
BDB 13/213

**Bulldown Farm Barns, Bramley,  
Hampshire, 2014  
Building Recording**

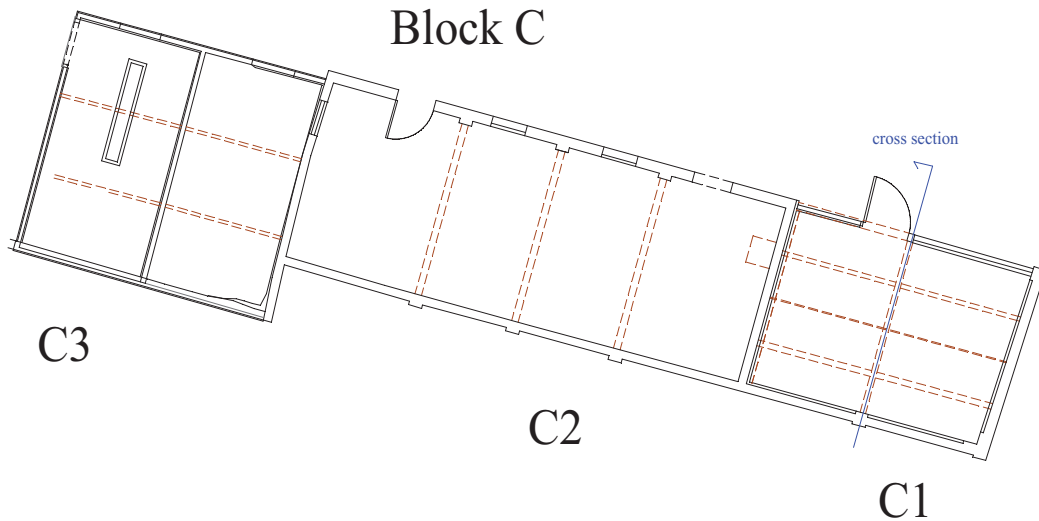
Figure 14. Structure of Block B.



THAMES VALLEY  
ARCHAEOLOGICAL  
SERVICES



Block F



BDB 13/213

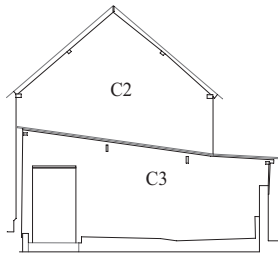


**Bulldown Farm Barns, Bramley,  
Hampshire, 2014  
Building recording**

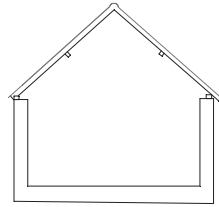
Figure 15. Block C.



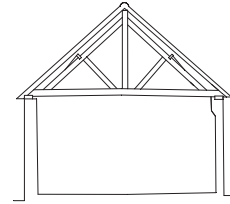
THAMES VALLEY  
ARCHAEOLOGICAL  
SERVICES



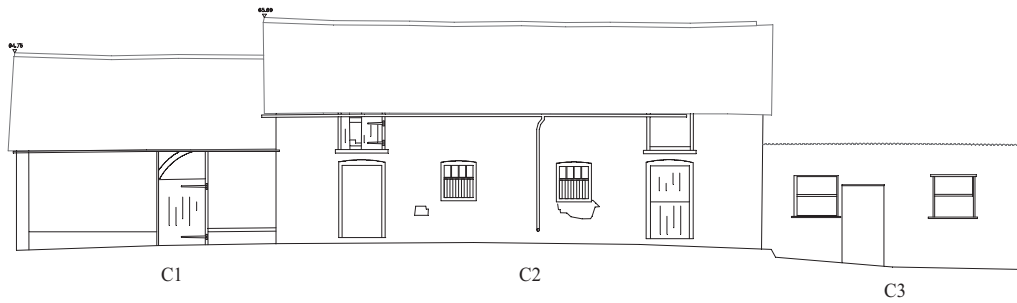
West elevation



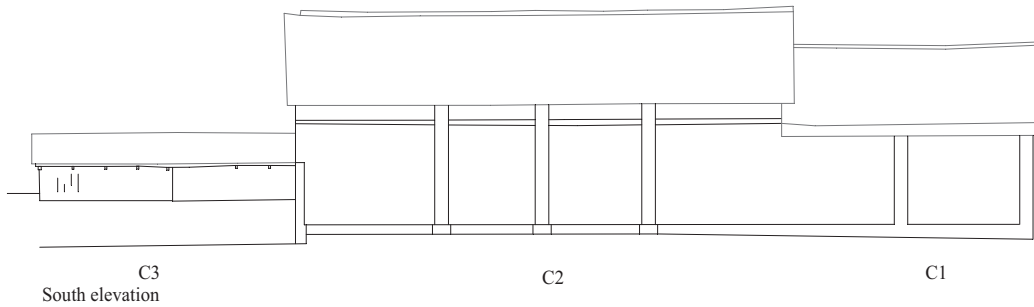
East elevation of unit C1



Truss through unit C1



North elevation



South elevation

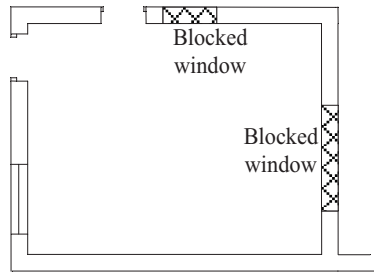
BDB 13/213

**Bulldown Farm Barns, Bramley,  
Hampshire, 2014  
Building Recording**

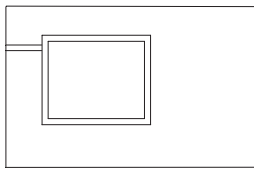
Figure 16. Elevations from Block C.



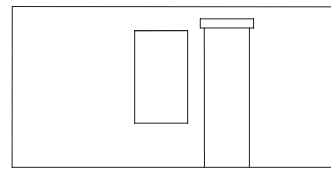
THAMES VALLEY  
ARCHAEOLOGICAL  
SERVICES



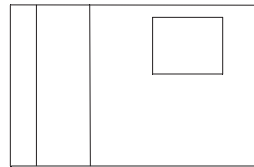
Plan of D1



East elevation



North elevation



West elevation

BDB 13/213

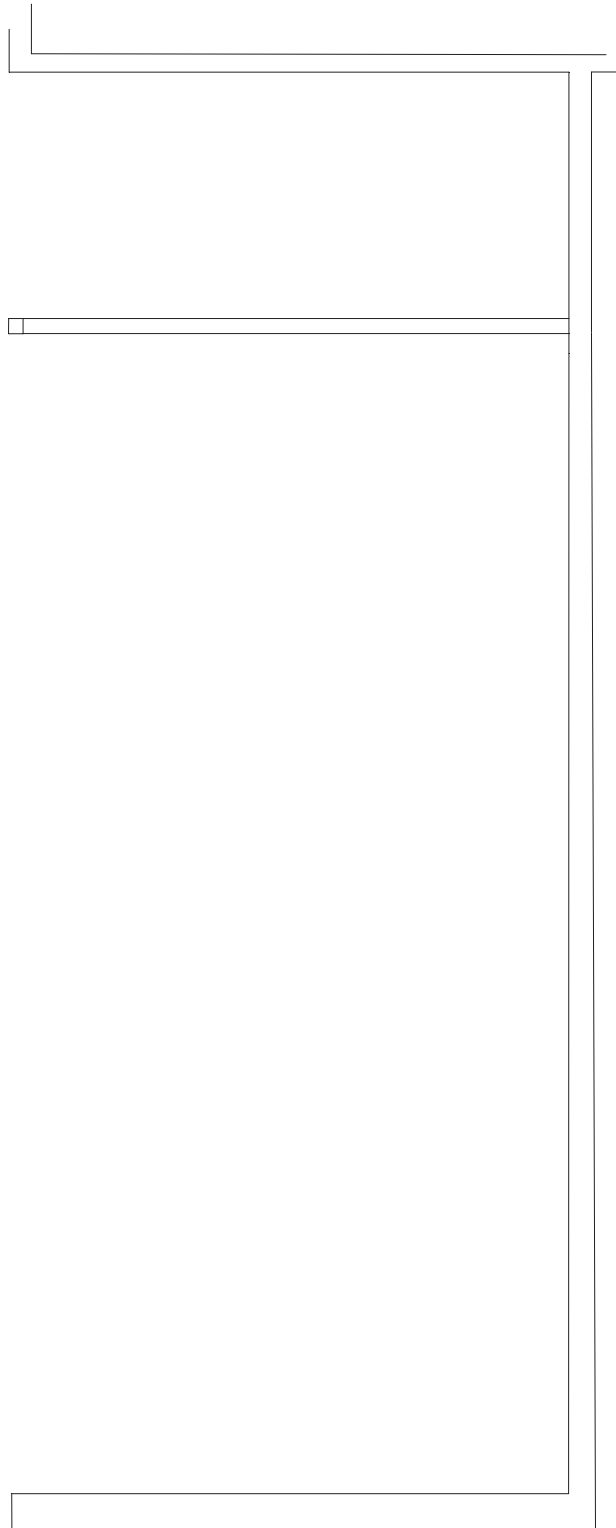


**Bulldown Farm Barns, Bramley,  
Hampshire, 2014  
Building recording**

Figure 17. Block D1.



THAMES VALLEY  
ARCHAEOLOGICAL  
SERVICES



BDB 13/213

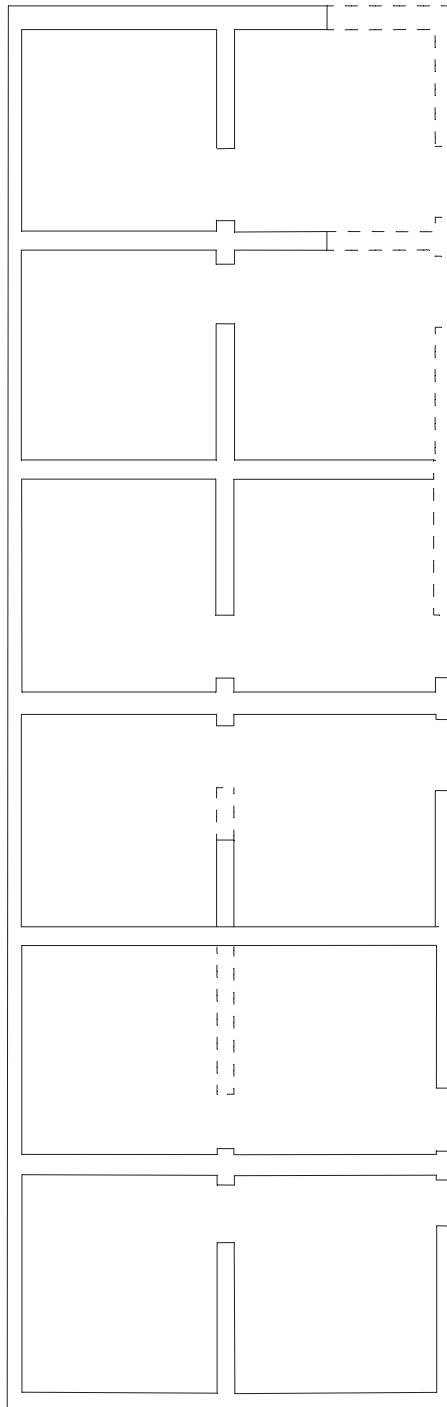


**Bulldown Farm Barns, Bramley,  
Hampshire, 2014  
Building recording**

Figure 18. Block D2.



THAMES VALLEY  
ARCHAEOLOGICAL  
SERVICES



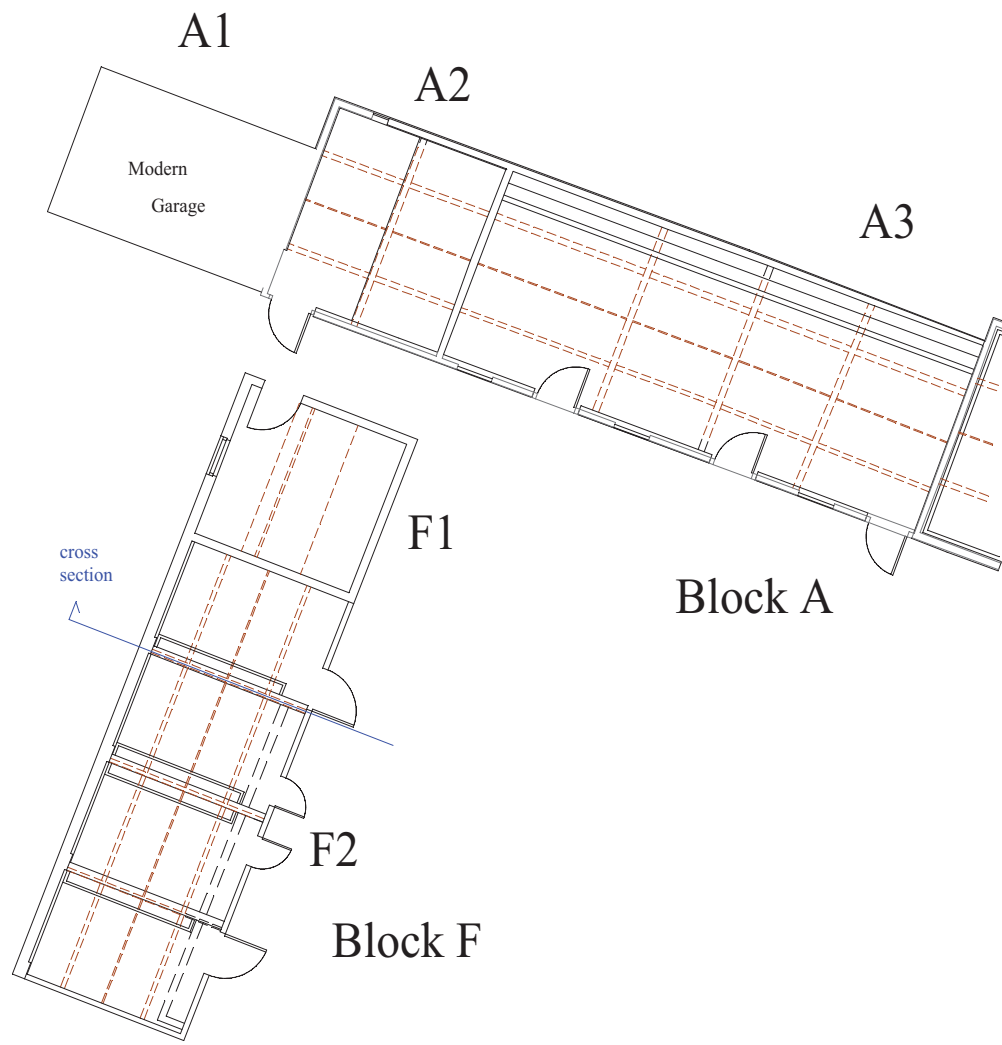
BDB 13/213

**Bulldown Farm Barns, Bramley,  
Hampshire, 2014  
Building recording**

Figure 19. Block E



THAMES VALLEY  
ARCHAEOLOGICAL  
SERVICES



BDB 13/213

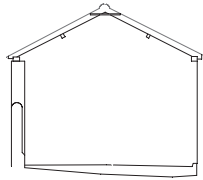


**Bulldown Farm Barns, Bramley,  
Hampshire, 2014  
Building recording**

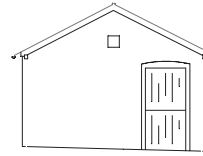
Figure 20. Block F.



THAMES VALLEY  
ARCHAEOLOGICAL  
SERVICES



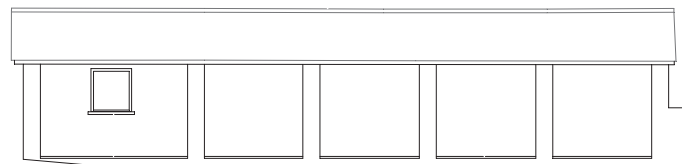
South elevation



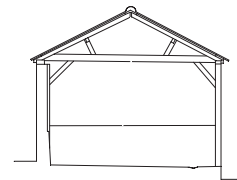
North elevation



East elevation



West elevation



Truss in F2

BDB 13/213

**Bulldown Farm Barns, Bramley,  
Hampshire, 2014  
Building Recording**

Figure 21. Elevations from Block F.



THAMES VALLEY  
ARCHAEOLOGICAL  
SERVICES





Plate 1. Exterior, courtyard area, looking north east,  
Scale: 2m.



Plate 2. Exterior, courtyard area, looking north west,  
Scale: 2m.



Plate 3. Exterior, west face of Unit A, looking east,  
Scales: 2m and 1m.



Plate 4. Interior, Unit A, south facing wall,  
Scales: 2m and 1m.

BDB 13/213

**Bulldown Farm, Bramley,  
Hampshire, 2014  
Building Recording  
Plates 1 - 4.**

THAMES VALLEY  
ARCHAEOLOGICAL  
SERVICES



Plate 5. Interior, east wall and roof trusses.



Plate 6. Exterior, south elevation of Unit A,  
Scales: 2m and 1m.



Plate 7. Interior, Unit A, concrete troughs,  
looking north west, Scales: 2m and 1m.



Plate 8. Interior, Unit A, trusses 1 and 2,  
looking west.

BDB 13/213

**Bulldown Farm, Bramley,  
Hampshire, 2014  
Building Recording  
Plates 5 - 8.**

THAMES VALLEY  
ARCHAEOLOGICAL  
SERVICES





Plate 9. Exterior, south elevation of Unit A,  
Scales: 2m and 1m.



Plate 10. Exterior, oblique of Unit A, looking south west,  
Scales: 2m and 1m.



Plate 11. Interior, Unit A, looking east,  
Scales: 2m and 1m.



Plate 12. Interior, Unit B, interior wall,  
looking north west, Scales: 2m and 1m.

BDB 13/213

**Bulldown Farm, Bramley,  
Hampshire, 2014  
Building Recording  
Plates 9 - 12.**

THAMES VALLEY  
ARCHAEOLOGICAL  
SERVICES



Plate 13. Interior, Unit A, interior door Unit A, looking north east, Scales: 2m and 1m.



Plate 14. Exterior, 'funnel' at Unit A, looking west, Scale: 2m.



Plate 15. Interior, truss at east end of Unit A, looking east.



Plate 16. Interior, connecting wall of Unit B, looking south.

BDB 13/213

**Bulldown Farm, Bramley,  
Hampshire, 2014  
Building Recording**  
Plates 13 - 16.

THAMES VALLEY  
ARCHAEOLOGICAL  
SERVICES





Plate 17. Exterior, west elevation of Unit B,  
Scales: 2m and 1m.



Plate 18. Exterior, east elevation of Unit B,  
Scales: 2m and 1m.



Plate 19. Exterior, south elevation of Unit B,  
Scales: 2m and 1m.



Plate 20. Interior, Unit B, looking south.

BDB 13/213

**Bulldown Farm, Bramley,  
Hampshire, 2014  
Building Recording  
Plates 17 - 20.**

THAMES VALLEY  
ARCHAEOLOGICAL  
SERVICES



Plate 21. Interior, Unit B, cart shed door on west face.



Plate 22. Interior, central truss of Unit B, looking south.



Plate 23. Exterior, north elevation of Unit C,  
Scales: 2m and 1m.



Plate 24. exterior, south elevation of Unit C.

BDB 13/213

**Bulldown Farm, Bramley,  
Hampshire, 2014  
Building Recording  
Plates 21 - 24.**

THAMES VALLEY  
ARCHAEOLOGICAL  
SERVICES





Plate 25. Exterior, south elevation of Unit C.



Plate 26. Interior, south facing interior wall of Unit C,  
Scales: 2m and 1m.



Plate 27. Exterior, east elevation of Unit C,  
Scales: 2m and 1m.



Plate 28. exterior, west facing interior wall of Unit C,  
Scales: 2m and 1m.

BDB 13/213

**Bulldown Farm, Bramley,  
Hampshire, 2014  
Building Recording  
Plates 25 - 28.**

THAMES VALLEY  
ARCHAEOLOGICAL  
SERVICES



Plate 29. Interior, Unit C, interior wall, looking north west.



Plate 30. Interior, access stairs to hayloft of west wall, Scales: 2m and 1m.



Plate 31. Interior, Unit C, hayloft, looking west.



Plate 32. Exterior, west elevation of Unit C, Scales: 2m and 1m.

BDB 13/213

**Bulldown Farm, Bramley,  
Hampshire, 2014  
Building Recording  
Plates 29 - 32.**

THAMES VALLEY  
ARCHAEOLOGICAL  
SERVICES





Plate 33. Interior, Unit C trough, looking south,  
Scales: 2m and 1m.



Plate 34. Exterior, north elevation of Unit D,  
Scales: 2m and 1m.



Plate 35. Exterior, Unit D, looking east,  
Scales: 2m and 1m.



Plate 36. 'Interior' of Unit D, looking south,  
Scale: 2m.

BDB 13/213

**Bulldown Farm, Bramley,  
Hampshire, 2014  
Building Recording  
Plates 33 - 36.**

THAMES VALLEY  
ARCHAEOLOGICAL  
SERVICES



Plate 37. Exterior, Unit D, looking north east.



Plate 38. 'Interior' of Unit D, looking south,  
Scale: 1m.



Plate 39. Exterior, Unit D, dated brick. looking east



Plate 40. Exterior, north elevation of Unit D,  
looking south, Scales: 2m and 1m.

BDB 13/213

**Bulldown Farm, Bramley,  
Hampshire, 2014  
Building Recording  
Plates 37 - 40.**

THAMES VALLEY  
ARCHAEOLOGICAL  
SERVICES





Plate 41. Exterior, east elevation of Unit F,  
Scales: 2m and 1m.



Plate 42. Exterior, Unit F, looking north east,  
Scales: 2m and 1m.



Plate 43. Exterior, Unit F, looking south west,  
Scales: 2m and 1m.



Plate 44. Interior, Unit F, looking north west,  
Scales: 2m and 1m.

BDB 13/213

**Bulldown Farm, Bramley,  
Hampshire, 2014  
Building Recording  
Plates 41 - 44.**

THAMES VALLEY  
ARCHAEOLOGICAL  
SERVICES



Plate 45. Interior, Unit F, looking south west,  
Scales: 2m and 1m.



Plate 46. Interior, north interior wall of Unit F,  
Scale: 2m.



Plate 47. Interior, Unit F, central truss,  
looking south.



Plate 48. Interior, example of a stall in Unit F,  
looking west, Scales: 2m and 1m.

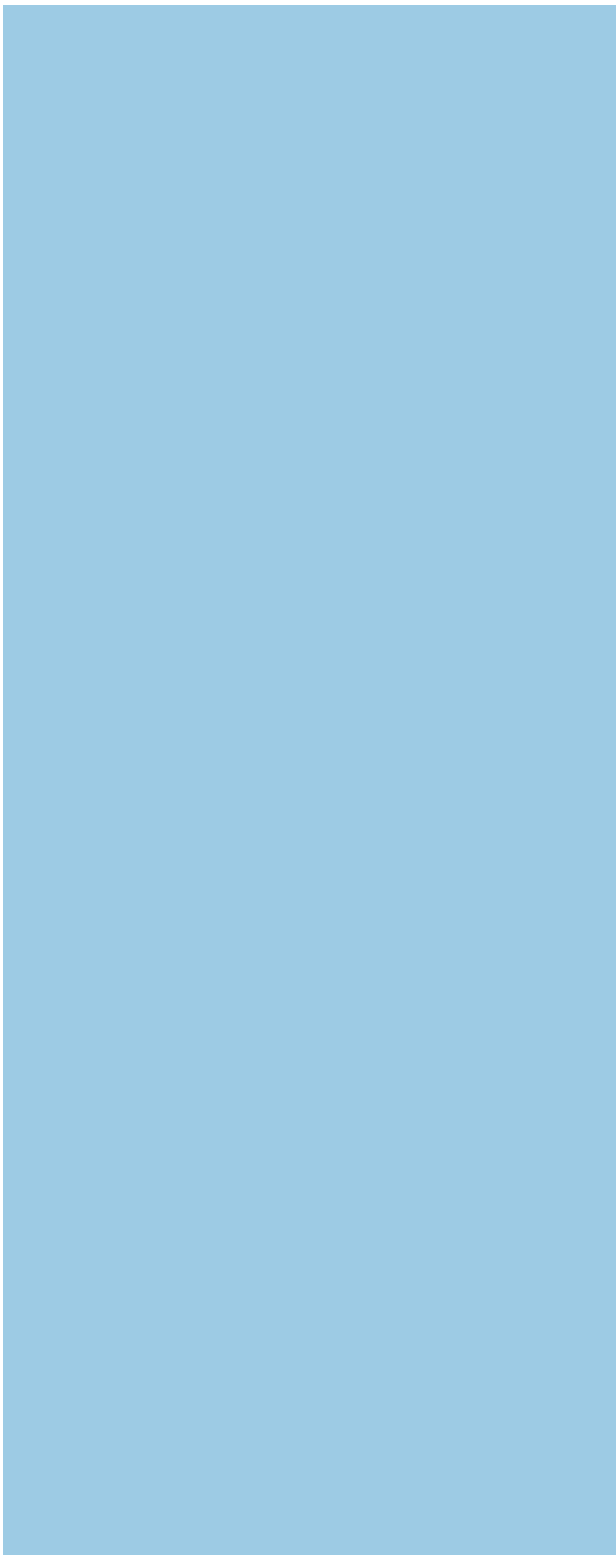
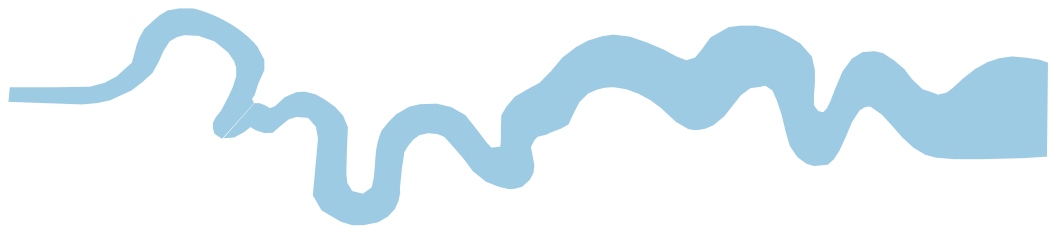
BDB 13/213

**Bulldown Farm, Bramley,  
Hampshire, 2014  
Building Recording  
Plates 45 - 48.**

THAMES VALLEY  
ARCHAEOLOGICAL  
SERVICES

## TIME CHART

	Calendar Years
Modern _____	AD 1901
Victorian _____	AD 1837
Post Medieval _____	AD 1500
Medieval _____	AD 1066
Saxon _____	AD 410
Roman _____	AD 43
Iron Age _____	BC/AD 750 BC
Bronze Age: Late -----	1300 BC
Bronze Age: Middle -----	1700 BC
Bronze Age: Early -----	2100 BC
Neolithic: Late .....	3300 BC
Neolithic: Early .....	4300 BC
Mesolithic: Late .....	6000 BC
Mesolithic: Early .....	10000 BC
Palaeolithic: Upper .....	30000 BC
Palaeolithic: Middle .....	70000 BC
Palaeolithic: Lower .....	2,000,000 BC
↓	↓



**Thames Valley Archaeological Services Ltd,  
47-49 De Beauvoir Road, Reading,  
Berkshire, RG1 5NR**

**Tel: 0118 9260552  
Fax: 0118 9260553  
Email: [tvas@tvas.co.uk](mailto:tvas@tvas.co.uk)  
Web: [www.tvas.co.uk](http://www.tvas.co.uk)**