

T H A M E S      V A L L E Y

ARCHAEOLOGICAL

S E R V I C E S

S O U T H

**Sir Winston Churchill Pub,  
Loughton, Essex**

**Building Recording**

**by Genni Elliott**

**Site Code: LUWC14/64**

**(TQ 4409 9630)**

**Sir Winston Churchill Public House,  
Loughton, Essex**

**Building Recording  
For Spirit Pub Company**

by Genni Elliott  
Thames Valley Archaeological  
Services Ltd

Site Code LUWC14/64

**April 2014**

## Summary

**Site name:** Sir Winston Churchill Public House, Loughton, Essex

**Grid reference:** TQ 4409 9630

**Site activity:** Building Recording

**Date and duration of project:** 11–15th April 2014

**Project manager:** Steve Ford

**Site code:** LUWC14/64

**Summary of results:** Externally the pub has not changed much from when it was originally conceived, except with the addition of the entrance porch, added in the 1990s. Internally the pub has been opened up to form two rather than three public rooms. One of the biggest changes was the relocation of the cellar stairs and the fitting of a kitchen in its place, thereby making the dumb-waiter redundant.

**Location and reference of archive:** The archive is presently held at Thames Valley Archaeological Services, Reading and will be deposited with Epping Forest Museum in due course.

*This report may be copied for bona fide research or planning purposes without the explicit permission of the copyright holder. All TVAS unpublished fieldwork reports are available on our website:  
[www.tvas.co.uk/reports/reports.asp](http://www.tvas.co.uk/reports/reports.asp).*

Report edited/checked by:	Steve Ford ✓ 30.04.14
	Steve Preston ✓ 29.04.14

# Sir Winston Churchill Public House, Loughton, Essex Building Recording

by Genni Elliott

Report 14/64

## Introduction

This report documents the results of building recording at Sir Winston Churchill Public House, Loughton, Essex (TQ 4409 9630) (Fig. 1). The work was commissioned by Mr Andrew Cooke of Dovetail Architects, on behalf of Spirit Pub Company, Sunrise House, Ninth Avenue, Burton upon Trent, Staffordshire, DE14 3JZ.

Planning permission (BPF/2163/13) has been gained from Epping Forest District Council to demolish the pub and garages and replace them with a mixed use development. The consent is subject to a condition which requires a standing building survey. This report documents the results of the building survey.

This is in accordance with the Department for Communities and Local Government's *National Planning Policy Framework* (NPPF 2012), and the District's policies on the historic environment. The fieldwork was undertaken by Genni Elliott and Anna Ginger on 11th–15th April 2014 and the site code is LUWC14.

The archive is presently held at Thames Valley Archaeological Services, Reading and will be deposited with Epping Forest Museum and a copy sent to the National Monuments Record in due course.

## Location, topography and geology

The Sir Winston Churchill Pub is located in the Debden area of Loughton, to the north of the junction of Chigwell Lane (A1168) with The Broadway (Fig. 2). The pub itself is located off of two minor roads, Vere Road to the north-east and Barrington Green (running parallel with Chigwell Lane) to the south-west. The site lies at approximately 45m above Ordnance Datum and the underlying geology is Boyn Hill Gravel (BGS 1976).

## Historical Background

The Debden estate was built between 1947 and 1952 after John Maitland sold 261ha of land to London County Council in 1944 for construction of housing for displaced Londoners following the war (CBRE 2008). Prior to the Sir Winston Churchill Pub, the site housed an earlier building known as 'Brick Clamps' (built between 1881 and 1896) that was used as an officers mess during the Second World War and subsequently as a canteen and temporary office accommodation by 1951. Historic planning applications show that initially 'Brick Clamps' was itself to be converted into a pub (CHI/0053/53 dated 25/02/1953) by Watney, Coombe, Reid and Co. Ltd. of the

Stag Brewery in Pimlico, SW1. By 04/09/1953 outline planning permission had been submitted for a permanent licensed premises with detailed plans submitted on 01/07/1955. 'Brick Clamps' was demolished in January 1955.

It would appear that the current pub was designed by the Surveyors department of the Stag Brewery. The original plans for the building were obtained from Epping Forest District Council and show that the external layout of the pub has only slightly altered and a few doors have been converted into windows (Fig. 3). Internally the changes have been greater, in particular on the ground floor (Fig. 4), which in the original plan has been divided into three main areas - the restaurant and lounge, the saloon and the public bar with an off sales area located within the eastern projecting gable. The bar itself has also been altered to reflect the more open nature of the current pub. The service area was designed as one open space with the stairs to the cellar located in the northwest corner. The main kitchen for the restaurant was located on the first floor (Fig. 5) with a dumb waiter present in the north-west food service area on the ground floor. The first floor has not changed in layout, only in function, with all the rooms now used as bedrooms. The cellar (Fig. 6) has been further sub-divided and the stairs moved to the north-west wall.

The earliest Ordnance Survey map to show the Sir Winston Churchill Pub is from 1968-1971 and is at too large a scale to show detail of whether a small block adjacent to a rear store has been demolished. Subsequent maps are at an even smaller scale, therefore no further Ordnance Survey maps have been illustrated.

## **Methodology**

The building survey was carried out in accordance with guidelines set out by the Royal Commission on Historic Monuments for a level 3 record. The survey comprised a fully analytical record of the building's development, a comprehensive photographic survey, paying attention to the methods of construction, chronological development and alterations, and features of special interest. The building has been recorded photographically both digitally and on 35mm format using colour print and black and white media which are catalogued (Appendix 1).

## **Description**

The Sir Winston Churchill Pub was situated on the corner of the two main roads (Chigwell Lane (A1168) and The Broadway) and as such was orientated with the main entrance fronting the corner of the junction with a wing parallel to Chigwell Lane and a wing parallel to The Broadway. The pub was positioned on a flat terrace, above the pavement level of both The Broadway and Barrington Green, and accessed via up to five steps depending on

the variation in elevation between the terrace and the natural slope. Outside the front of the pub, on the terrace were picnic tables for seating. The boundary of the seating area was marked with a brick wall surmounted with a decorative iron fence (Pl. 1) set in concrete painted white and encompassing the steps onto the terrace. To the north-west were a beer garden and a car park. A separate yard and service area was located to the rear of the pub and accessed off of Vere Road.

### *External*

The pub was brick built with a complex series of hipped roofs with projecting gables, hung in red ceramic tiles. The bricks themselves measured 223mm x 105mm x 60mm (8 ¾" x 4 1/8" x 2 3/8") and were laid in Flemish bond with a soldier course above door and window openings. The bonding was a gritty cement mortar. The windows on the ground floor were timber-framed casement style windows with each window sub-divided into eight or twelve panes depending on size. These were all painted black. All of the first floor windows had been replaced with modern white uPVC double glazing in a style similar to that found on the ground floor. The window sills were all concrete.

The main entrance was located in the south facing façade (Fig. 7) which incorporated a projecting gable on either side. The entrance (Pl. 2) had been emphasised with a raised step covered in tiles upon which was a porch supported on four squared, wooden pillars stained black. These had a scantling of 0.195m x 0.17m (7½" x 6¾"). Above this was the main pub sign, 'Sir Winston Churchill' in gold on a black background. Suspended above the sign was a lantern-type light. Completing the entrance setting was a pair of ornate streetlight-style lights each supporting five globe lights (Pl. 3). The planning application for this entrance, dated June 1996, shows it was designed by Cube Architects of London. The entrance itself was located centrally and consisted of a pair of double doors, the upper part of which contained a glass window whilst the lower half was sub-divided into two panels. It had been painted black with gold around the outside of the lower panels. On either side of the door was a window, the sills of which had been covered in brass to match the black and gold coloured theme. On the first floor were three windows.

Each of the projecting gables (Figs. 7 and 8) contained a single window on both the ground and first floors in the south walls and a further window on each floor overlooking the main entrance. The window on the ground floor in the eastern gable overlooking the entrance was larger than the one in the opposite gable and was a later replacement for a door, which can be seen in the slight variation in brickwork and mortar.

The south-east façade (Pl. 4), fronting onto The Broadway (Fig. 8) contained two windows of different sizes on the ground floor with a second entrance at the north-east end. The doorway consisted of a pair of doors sub-divided into three panels, the top two of which were of glass. Above the doors was a narrow window labelled 'Bar.' Around the doorway was a moulded stone architrave. A set of steps within the terrace was located opposite the doorway. Further to the north-east was a small round window edged with a soldier course of bricks. On the first floor, set within the roof were three dormer windows. The roof projected beyond the ground floor wall slightly and was supported on a brace constructed of red ceramic tiles.

Beyond the building the wall continued, at just below one-storey height, to enclose a small courtyard. Set within the wall was a pair of decorative wrought iron gates which had a rounded top. Either side of the gates the wall contained concave curves which reduced the wall height. The wall was topped with a brick soldier course.

The south-west façade (Pl. 5), fronting onto Barrington Green (Fig. 8), contained three windows on the ground floor of varying sizes. Set within the roof above were two dormer windows. Like the Broadway wing the roof extended beyond the ground floor wall and was supported by a brace constructed of red clay tiles. The window at the north-west end was a later replacement for a doorway which can be seen in the slight variation in brickwork and mortar both around and beneath the window.

Beyond the building the wall continued, to enclose the patio area within the beer garden. Set within the wall was a pair of decorative wrought iron gates (Pl. 6), the same as those in the southeast facade. Either side of the gates the wall contained concave curves which reduced the wall height. The wall was topped with a soldier course.

The north-west elevation (Pl. 7), facing onto the beer garden (Fig. 9) contained four windows on the ground floor, including a circular one at the south-west end, and a double door at the north-east end. Above the windows was a second pub name sign, matching the one above the front entrance. On the first floor were three windows above those on the ground floor. The roof above the doors was flat with a further window visible on the first floor but set back. The central ground floor window was a later addition in lieu of a door, evidence for which could be seen in the brickwork beneath the window.

The rear elevations within the yard area faced north-west and north-east and incorporated a number of staggered blocks. On the first floor was a north facing section. Within the single storey areas the bricks were the same size and type used in the rest of the building but were laid in stretcher bond.

The north-east elevations (Pl. 8) consisted of the rear of the bottle store, dry goods, kitchen and the pub (Fig. 10). Within the bottle store section were two doors, a single, multi-panelled door with a small central

window, and a pair of timber plank doors. Both had a concrete step. In the ground next to the double door was a pair of wooden trap doors accessing the barrel slide and cellar. The dry goods store was largely obscured by a modern, plastic shed. The kitchen elevation contained a single window painted white. This was a crude later insertion, replacing an earlier door, and no effort had been made to match the bricks or blend the blocked section with the original brickwork. Set back on the first floor were two windows in a projecting gable. The section exposed of the pub contained no openings or features.

The north-west elevations (Pl. 9) consisted of the rear wall of the courtyard, the rear of the pub, the bottle store, dry goods, and the kitchen (Fig. 9). The rear courtyard wall contained a single wooden plank gate set within a brick archway. Further to the south-west was a set of stairs giving access to the boiler room. These were of concrete construction surrounded by functional, scaffold pole type railings painted black. The banister rail was of the same type. Within the rear of the pub section was a single window. On the first floor and set back were three windows of varying sizes and part of the projecting block for the stairs. There were no features within the side of the bottle store. The side of the dry goods store showed where a section had been demolished, with the north-west to south-east aligned wall left jagged and different bricks used to build a new external wall. The kitchen elevation contained a single window.

The north elevations (Pl. 10) were only present on the first floor (Fig. 9) and consisted of two windows and a section of the projecting block for the stairs. Set within that was a plain white fire door giving access to the flat roof area.

### *Cellar (Fig. 11)*

The cellar (Pl. 11) was accessed via a set of stairs located between the kitchen and bottle store which gave access to the main room (17). The floor was of concrete with a drain running diagonally across it and the ceiling was of concrete block. The barrel slide, located opposite the stairs had been removed (Pl. 12). The internal walls within the cellar, where they were original, were of brick construction laid in Flemish bond and later walls were stud and wooden sheet. The walls had been painted white with a black concrete skirting board.

A second room had been partitioned off in the south-west corner of the cellar for use as a cold beer store (Pl. 13). Shelving along the southern wall had been erected for extra storage and was contained within a wire cage. To the south-east was another area that had been partitioned off; this was not accessible.

Located externally within the yard area of the pub was a second cellar entrance giving access to the boiler room; this was not accessed.



### *Ground Floor (Fig. 12)*

The ground floor could be divided into eight rooms (numbered 16, 18–24) and a dry goods store off the kitchen and a gents' toilet that was not accessible. Rooms 16, 18 and 19 formed the private areas of the building whilst rooms 20 and 23 were the main public (bar) areas. Rooms 21, 22 and 24 were toilets accessed from rooms 20 and 23.

Room 16 consisted of a small corridor containing stairs to the first floor. As well as the first floor there was access to the bottle store (room 19), the rear yard, and room 23). At the bottom of the stairs on the north-east wall was a cast iron radiator set in a small alcove.

The kitchen (room 18) and bottle store (room 19) were located off of a small hallway behind the serving area. Also within this hallway were located the stairs to the cellar, the walls of which were of modern cement blocks. The walls and floor of the kitchen had been completely tiled over after it had been converted into a kitchen (Pl. 14). In the north-east and north-west walls was a window, both of which had bars in front. In the west corner was the remains of the dumb-waiter (serving upstairs), seen only as a protruding stack. In the north-east corner was access to a small cupboard used for storing dry goods. The bottle store (Pl. 15) had a functional, linoleum-style floor covering and had a pair of doors in the north-east wall giving access to the rear yard. Next to the doors was a further pair of doors in the south-east wall giving access to corridor 16. The room had been subdivided with a new room added in the south-east side. The dividing wall was of wooden stud construction, with a plywood door. The room beyond was not accessible.

Rooms 20 and 23 were the main public rooms. Both were similarly decorated in cream and purple with wooden strip flooring, except one section of room 23 which was covered in grey tiles. Around the bar counter within room 20 was a slightly raised wooden floor, stained darker than the rest of the floor. Around the walls was a dado rail, with a picture rail above and relatively plain coving (Pl. 16). Beneath the dado rail was wooden panelling, containing square moulded panels.

The bar was predominantly located along the north wall within room 20 but extended to the north-east and north-west. The counter was of dark wood, beneath which were moulded panels (Pl. 17), similar in style to those found on the wall. Each panel consisted of two horizontal moulded panels above four vertical moulded panels. Dividing the panels and supporting the counter top were shaped wooden pilasters with vertical grooves beneath a flower motif. The panelling on the bar within room 23 was the same as that on the walls. At the rear of the bar

was a sign, 'Sir Winston Churchill' in black on a yellow background (Pl. 18). The sign was supported on solid twisted wooden columns (Pl. 19).

Room 20 fronted onto Barrington Green and the junction between Chigwell Lane and the Broadway. The main entrance was located at the eastern end of room 20 (Pl. 20) with a second set of doors in the north-west wall giving access to the beer garden. In the west corner was a modern, raised section containing tables and chairs (Pl. 20). It was accessed up two steps and railings denoted the junction between the change in floor levels. The railings consisted of square wooden posts with vertical grooves capped with a round ball, between which were twisted metal balusters. In the eastern wall was a fireplace (Pl. 22). Internally it was of cast iron with a wooden surround, similar in style to the pilasters found within the bar panelling. It was a replica in the Adam's style. To the south of the fireplace was access to room 23.

Room 23 fronted onto the Broadway and contained an entrance at the eastern end of the room (Pl. 23). A second set of doors, giving access to the paved courtyard were located within the north-eastern wall. Towards the north-west the ceiling was lower, within the area of the former bar. In the north-west wall, to the east of the former bar was a cast iron radiator beneath the window (Pl. 24) and in the north-east wall was a blocked fireplace.

Rooms 21 and 22 were the ladies' and gents' toilets, located within one of the projecting gables and accessed from room 20. Both toilets were partly tiled with a linoleum floor. The gents' (room 21) consisted of a single toilet with a window and a set of urinals to the north-west (Pl. 25), which also contained a window. The ladies' toilet (room 22) consisted of two cubicles (Pl. 26), each containing a window, with a further window in the communal area.

Room 24 was a ladies' toilet located at the southern end of room 23. It was similar to toilets 21 and 22 with tiled walls and a linoleum floor, but contained only a single cubicle. A window lit both the cubicle and the communal area. The gent's toilet was located at the east end of room 23; there was no access.

### *First Floor (Fig. 13)*

The first floor can be sub-divided into 14 rooms (numbered 1–6 and 8–15) and a corridor (numbered 7). The bedrooms were located overlooking the street frontages with the bathrooms and kitchen overlooking the rear. Rooms 1-6 were located in the Barrington Green wing, rooms 8 and 9 were above the main entrance and rooms 10-15 located in the Broadway wing. The entirety of the first floor had nothing in the way of decoration with no

coving, picture rails or radiators. The walls were all of plain plaster with plain white fire doors and the windows had all been replaced with modern double glazing.

The Barrington Green wing consisted of; room 1, the kitchen (Pl. 27), with windows on two walls, looking out over the flat roof to the rear of the pub and the beer garden. In the north corner was located the dumb-waiter from the first-floor kitchen and there were two small cupboards, one in the north-west wall and one in the south-east wall.

Room 3 (Pl. 28) was a bathroom adjacent to the kitchen and overlooking the beer garden. It contained a single window, a wash-basin and bath. The toilet was located within room 2, next to the bathroom and also contained a single window overlooking the beer garden.

The bedrooms were all very similar. Room 4 had a small window overlooking the beer garden and a dormer window fronting onto Barrington Green (Pl. 29). At the south-east end of the room was a small cupboard. Room 5 had a single dormer window overlooking Barrington Green and a small cupboard in the northwest wall. Room 6 was located in one of the projecting gables and had two windows (Pl. 30); one overlooking Barrington Green and the other in the east wall looking onto the main pub entrance.

All the rooms were connected by corridor 7, which was entirely internal along this wing and formed a triangle of space at the junction of the Barrington Green wing with the rooms above the main entrance.

Room 8 was located above the main entrance and contained a single window overlooking the road junction. In the north wall was a small cupboard (Pl. 31). Room 9 was the other room located above the main entrance and contained two windows overlooking the road junction. In the east wall was a blocked fireplace (Pl. 32) with a tiled hearth. Within this section of the building corridor 7 contained two windows (Pl. 33) overlooking the flat roof to the rear and a small cupboard at the west end. At the east end of the corridor in an additional block to the north were the stairs to the ground floor. These contained a half-landing at the same level as the flat roof. At this level were a window and a door onto the roof area. The stairs then turned to the north-east to form the longer run of steps to the ground floor. These were enclosed by a wall on either side. The banister rail was of plain, slightly rounded wood (Pl. 34).

Within the Broadway wing at the far end of the corridor was a bathroom (room 10) and separate toilet (room 11), both containing a single window overlooking the flat roof at the rear.

As in the Barrington Green wing, the bedrooms were all very similar. Beside the toilet was room 15 which ran across the entire northeast end of the building. There was a window in all three external walls, including a dormer window in the south-east wall (Pl. 35). In the north-east wall was a fireplace (Pl. 36) with a black and

white tile surround. The next room along the corridor was room 14 which had a single dormer window overlooking The Broadway at the front of the pub. In the southwest wall was a small cupboard. Adjacent, was room 13, again with a single dormer window overlooking the street front and a small cupboard in the north-east wall. Room 12 was located with the gable and contained two windows, one in the south wall and the other in the west wall overlooking the main entrance.

The corridor (room 7) was internal within this wing. Within the corridor, near to the stairs were two large storage cupboards.

## **Conclusion**

Externally the pub has not changed much from when it was originally conceived. A few doors have been converted to windows and a small store behind the kitchen has been demolished. The biggest change occurred within the area of the main entrance with the addition of porch supported on wooden posts in the mid-1990s. The majority of change occurred internally and predominantly on the ground floor, though changes have also been made to the cellar. Within the cellar the stairs have been moved and it has been further sub-divided. On the ground floor the public area has been opened up to form two rooms rather than three and the bar itself shortened. Within the service area a kitchen has been put in and the dumb-waiter blocked up. No obvious changes have occurred on the first floor, except that all rooms are now used as bedrooms.

## **References**

- BGS, 1976, *British Geological Survey*, 1:50,000, Sheet 257, Drift Edition, Keyworth  
CBRE Urban Practitioners, 2008, *Debden Town Centre and Broadway*, Epping Forest District Council  
NPPF 2012, *National Planning Policy Framework*, Dept Communities and Local Govt, London  
RCHME, 1996, *Recording Historic Buildings: a descriptive specification*, 3rd edn, Roy Comm Hist Monuments (England), London

**APPENDIX 1: Photographic Catalogue**

## A. Digital

<b>Cat. No.</b>	<b>Comments (cut, deposit, trench, or test pit no., description, scale, etc.)</b>
1	Room 1 looking N – General shot to window 1x1m; 1x2m
2	Room 2 & 3 looking NW – General shot to window 1x1m; 1x2m
3	Room 4 looking W towards window 1x1m; 1x2m
4	Room 5 looking S towards window 1x1m; 1x2m
5	Room 6 looking S towards window 1x1m; 1x2m
6	Room 7 looking SE along corridor 1x1m; 1x2m
7	Room 8 looking NW to cupboard 1x1m; 1x2m
8	Room 9 looking SE to windows and fireplace (tile hearth) 1x1m; 1x2m
9	Room 7 looking W along corridor 1x1m; 1x2m
10	Room 7 looking N down stairs 1x1m; 1x2m
11	Room 7 looking NE along corridor 1x1m; 1x2m
12	Room 10 looking W – General view 1x2m
13	Room 11 looking NW – General view 1x2m
14	Room 12 looking SE – General 1x1m; 1x2m
15	Room 13 looking S – General view 1x2m
16	Room 14 looking E - General view 1x2m
17	Room 15 looking SE to windows 1x1m; 1x2m
18	Room 15 looking NE to fireplace 1x1m
19	Room 7 looking SW up stairs 1x2m
20	Room 16 looking SE – lobby 1x1m; 1x2m
21	Room 16 looking NE – radiator 1x1m; 1x2m
22	Room 17 looking NE – General shot (wrong photo number) 1x1m; 1x2m
23	Room 17 looking SW - General shot (wrong photo number) 1x1m; 1x2m
24	Room 17 looking NE – Barrel slide 1x2m
25	Room 17 looking W – General shot 1x2m
26	Room 17 looking SE – Cold beer store 1x1m; 1x2m
27	Room 18 looking N – General view 1x1m; 1x2m
28	Stairs to cellar looking NE
29	Room 19 looking NE – General shot 1x1m; 1x2m
30	Exterior looking SE –General shot 1x1m; 1x2m
31	Exterior looking SE – General shot 1x1m; 1x2m
32	Exterior looking N – General view 1x1m; 1x2m
33	Exterior looking N – General shot 1x1m; 1x2m
34	Exterior looking NW – General view 1x1m; 1x2m
35	General view looking SW along terrace 1x1m; 1x2m
36	Exterior looking NW – detail of light
37	Exterior looking NE – Detail of gate 1x1m; 1x2m
38	Room 20 looking W – Raised seating 1x1m; 1x2m
39	Room 20 looking SW - Detail of wallpaper 1x1m
40	Room 20 looking NE – Detail of railings 1x1m
41	Room 20 looking SE towards bar 1x1m; 1x2m
42	Room 20 looking NE – Detail of bar 1x2m
43	Room 21 looking W – Urinals 1x2m
44	Room 20 looking E – General view 1x1m; 1x2m
45	Room 22 looking S – Ladies toilet 1x1m; 1x2m
46	Room 20 looking E – Detail of fireplace 1x1m
47	Room 20 looking N towards bar
48	Room 20 looking NE – Detail of twisted post bar support

<b>Cat. No.</b>	<b>Comments (cut, deposit, trench, or test pit no., description, scale, etc.)</b>
49	Room 20 looking S towards entrance 1x1m; 1x2m
50	Room 20 looking W – General shot 1x1m; 1x2m
51	Room 20 looking NW – General shot 1x1m; 1x2m
52	Room 23 looking S to window 1x1m; 1x2m
53	Room 23 looking SE – Detail of coving
54	Room 23 looking NE – General shot 1x1m; 1x2m
55	Room 23 looking SE to doors 1x2m
56	Room 23 looking NW to window and radiator 1x1m; 1x2m
57	Room 23 looking W to bar 1x1m 1x2m
58	Room 24 looking S – Ladies toilet 1x1m; x2m
59	Room 20 looking E – Detail of interior fireplace
60	Exterior looking S – General shot
61	Exterior looking SW – General shot 1x1m; 1x2m
62	Exterior looking SW – General shot 1x1m; 1x2m
63	Exterior looking SE – General shot towards stairs 1x1m;1x2m
64	Exterior looking SW – General shot 1x1m; 1x2m

#### B. Colour Prints

<b>Cat. No.</b>	<b>Comments (cut, deposit, trench, or test pit no., description, scale, etc.)</b>
1	Room 1 looking N – General shot to window 1x1m; 1x2m
2	Room 2 & 3 looking NW – General shot to window 1x1m; 1x2m
3	Room 4 looking W towards window 1x1m; 1x2m
4	Room 5 looking S towards window 1x1m; 1x2m
5	Room 6 looking S towards window 1x1m; 1x2m
6	Room 7 looking SE along corridor 1x1m; 1x2m
7	Room 8 looking NW to cupboard 1x1m; 1x2m
8	Room 9 looking SE to windows and fireplace (tile hearth) 1x1m; 1x2m
9	Room 7 looking W along corridor 1x1m; 1x2m
10	Room 7 looking N down stairs 1x1m; 1x2m
11	Room 7 looking NE along corridor 1x1m; 1x2m
12	Room 10 looking W – General view 1x2m
13	Room 11 looking NW – General view 1x2m
14	Room 12 looking SE – General 1x1m; 1x2m
15	Room 13 looking S – General view 1x2m
16	Room 14 looking E - General view 1x2m
17	Room 15 looking SE to windows 1x1m; 1x2m
18	Room 15 looking NE to fireplace 1x1m
19	Room 7 looking SW up stairs 1x2m
20	Room 16 looking SE – lobby 1x1m; 1x2m
21	Room 16 looking NE – radiator 1x1m; 1x2m
22	Room 17 looking NE – General shot (wrong photo number) 1x1m; 1x2m
23	Room 17 looking SW - General shot (wrong photo number) 1x1m; 1x2m
24	Room 17 looking NE – Barrel slide 1x2m
25	Room 17 looking W – General shot 1x2m
26	Room 17 looking SE – Cold beer store 1x1m; 1x2m
27	Room 18 looking N – General view 1x1m; 1x2m
28	Stairs to cellar looking NE
29	Room 19 looking NE – General shot 1x1m; 1x2m
30	Exterior looking SE –General shot 1x1m; 1x2m
31	Exterior looking SE – General shot 1x1m; 1x2m
32	Exterior looking N – General view 1x1m; 1x2m
33	Exterior looking N – General shot 1x1m; 1x2m
34	Exterior looking NW – General view 1x1m; 1x2m

<b>Cat. No.</b>	<b>Comments (cut, deposit, trench, or test pit no., description, scale, etc.)</b>
35	General view looking SW along terrace 1x1m; 1x2m
36	Exterior looking NW – detail of light
37	Exterior looking NE – Detail of gate 1x1m; 1x2m
38	Room 20 looking W – Raised seating 1x1m; 1x2m
39	Room 20 looking SW - Detail of wallpaper 1x1m
40	Room 20 looking NE – Detail of railings 1x1m
41	Room 20 looking SE towards bar 1x1m; 1x2m
42	Room 20 looking NE – Detail of bar 1x2m
43	Room 21 looking W – Urinals 1x2m
44	Room 20 looking E – General view 1x1m; 1x2m
45	Room 22 looking S – Ladies toilet 1x1m; 1x2m
46	Room 20 looking E – Detail of fireplace 1x1m
47	Room 20 looking N towards bar
48	Room 20 looking NE – Detail of twisted post bar support
49	Room 20 looking S towards entrance 1x1m; 1x2m
50	Room 20 looking W – General shot 1x1m; 1x2m
51	Room 20 looking NW – General shot 1x1m; 1x2m
52	Room 23 looking S to window 1x1m; 1x2m
53	Room 23 looking SE – Detail of coving
54	Room 23 looking NE – General shot 1x1m; 1x2m
55	Room 23 looking SE to doors 1x2m
56	Room 23 looking NW to window and radiator 1x1m; 1x2m
57	Room 23 looking W to bar 1x1m 1x2m
58	Room 24 looking S – Ladies toilet 1x1m; x2m
59	Room 20 looking E – Detail of interior fireplace
60	Exterior looking S – General shot
61	Exterior looking SW – General shot 1x1m; 1x2m
62	Exterior looking SW – General shot 1x1m; 1x2m
63	Exterior looking SE – General shot towards stairs 1x1m;1x2m
64	Exterior looking SW – General shot 1x1m; 1x2m

### C. Monochrome Images

<b>Cat. No.</b>	<b>Comments (cut, deposit, trench, or test pit no., description, scale, etc.)</b>
1	Room 1 looking N – General shot to window 1x1m; 1x2m
2	Room 2 & 3 looking NW – General shot to window 1x1m; 1x2m
3	Room 4 looking W towards window 1x1m; 1x2m
4	Room 5 looking S towards window 1x1m; 1x2m
5	Room 6 looking S towards window 1x1m; 1x2m
6	Room 7 looking SE along corridor 1x1m; 1x2m
7	Room 8 looking NW to cupboard 1x1m; 1x2m
8	Room 9 looking SE to windows and fireplace (tile hearth) 1x1m; 1x2m
9	Room 7 looking W along corridor 1x1m; 1x2m
10	Room 7 looking N down stairs 1x1m; 1x2m
11	Room 7 looking NE along corridor 1x1m; 1x2m
12	Room 10 looking W – General view 1x2m
13	Room 11 looking NW – General view 1x2m
14	Room 12 looking SE – General 1x1m; 1x2m
15	Room 13 looking S – General view 1x2m
16	Room 14 looking E - General view 1x2m
17	Room 15 looking SE to windows 1x1m; 1x2m
18	Room 15 looking NE to fireplace 1x1m

<b>Cat. No.</b>	<b>Comments (cut, deposit, trench, or test pit no., description, scale, etc.)</b>
19	Room 7 looking SW up stairs 1x2m
20	Room 16 looking SE – lobby 1x1m; 1x2m
21	Room 16 looking NE – radiator 1x1m; 1x2m
22	Room 17 looking NE – General shot (wrong photo number) 1x1m; 1x2m
23	Room 17 looking SW - General shot (wrong photo number) 1x1m; 1x2m
24	Room 17 looking NE – Barrel slide 1x2m
25	Room 17 looking W – General shot 1x2m
26	Room 17 looking SE – Cold beer store 1x1m; 1x2m
27	Room 18 looking N – General view 1x1m; 1x2m
28	Stairs to cellar looking NE
29	Room 19 looking NE – General shot 1x1m; 1x2m
30	Exterior looking SE –General shot 1x1m; 1x2m
31	Exterior looking SE – General shot 1x1m; 1x2m
32	Exterior looking N – General view 1x1m; 1x2m
33	Exterior looking N – General shot 1x1m; 1x2m
34	Exterior looking NW – General view 1x1m; 1x2m
35	General view looking SW along terrace 1x1m; 1x2m
36	Exterior looking NW – detail of light
37	Exterior looking NE – Detail of gate 1x1m; 1x2m
38	Room 20 looking W – Raised seating 1x1m; 1x2m
39	Room 20 looking SW - Detail of wallpaper 1x1m
40	Room 20 looking NE – Detail of railings 1x1m
41	Room 20 looking SE towards bar 1x1m; 1x2m
42	Room 20 looking NE – Detail of bar 1x2m
43	Room 21 looking W – Urinals 1x2m
44	Room 20 looking E – General view 1x1m; 1x2m
45	Room 22 looking S – Ladies toilet 1x1m; 1x2m
46	Room 20 looking E – Detail of fireplace 1x1m
47	Room 20 looking N towards bar
48	Room 20 looking NE – Detail of twisted post bar support
49	Room 20 looking S towards entrance 1x1m; 1x2m
50	Room 20 looking W – General shot 1x1m; 1x2m
51	Room 20 looking NW – General shot 1x1m; 1x2m
52	Room 23 looking S to window 1x1m; 1x2m
53	Room 23 looking SE – Detail of coving
54	Room 23 looking NE – General shot 1x1m; 1x2m
55	Room 23 looking SE to doors 1x2m
56	Room 23 looking NW to window and radiator 1x1m; 1x2m
57	Room 23 looking W to bar 1x1m 1x2m
58	Room 24 looking S – Ladies toilet 1x1m; x2m
59	Room 20 looking E – Detail of interior fireplace
60	Exterior looking S – General shot
61	Exterior looking SW – General shot 1x1m; 1x2m
62	Exterior looking SW – General shot 1x1m; 1x2m
63	Exterior looking SE – General shot towards stairs 1x1m; 1x2m
64	Exterior looking SW – General shot 1x1m; 1x2m
49	Room 20 looking S towards entrance 1x1m; 1x2m
50	Room 20 looking W – General shot 1x1m; 1x2m
51	Room 20 looking NW – General shot 1x1m; 1x2m
52	Room 23 looking S to window 1x1m; 1x2m
53	Room 23 looking SE – Detail of coving
54	Room 23 looking NE – General shot 1x1m; 1x2m
55	Room 23 looking SE to doors 1x2m
56	Room 23 looking NW to window and radiator 1x1m; 1x2m
57	Room 23 looking W to bar 1x1m 1x2m
58	Room 24 looking S – Ladies toilet 1x1m; x2m
59	Room 20 looking E – Detail of interior fireplace

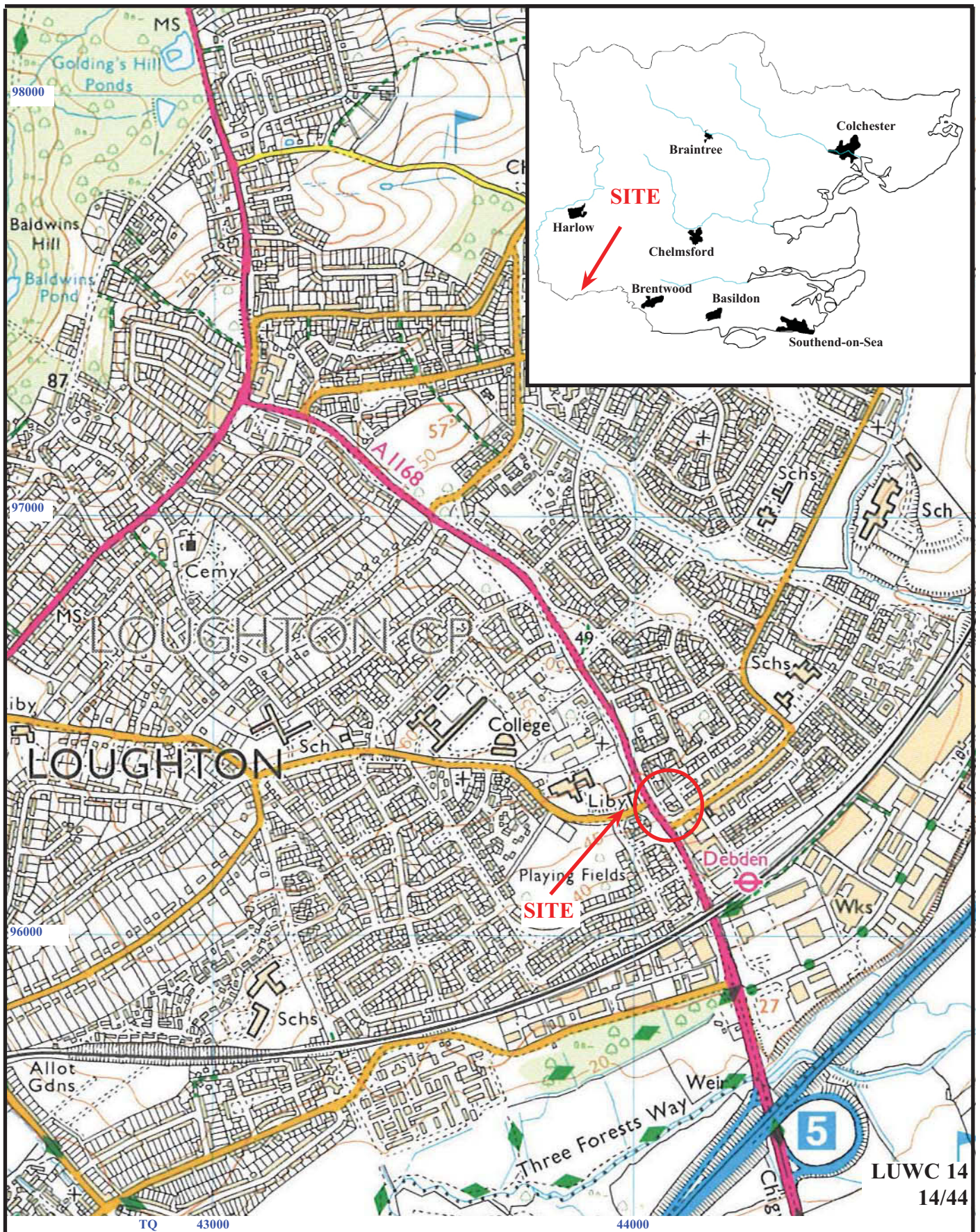


<b>Cat. No.</b>	<b>Comments (cut, deposit, trench, or test pit no., description, scale, etc.)</b>
60	Exterior looking S – General shot
61	Exterior looking SW – General shot 1x1m; 1x2m
62	Exterior looking SW – General shot 1x1m; 1x2m
63	Exterior looking SE – General shot towards stairs 1x1m; 1x2m
64	Exterior looking SW – General shot 1x1m; 1x2m

**ESSEX HISTORIC ENVIRONMENT RECORD/ESSEX ARCHAEOLOGY AND HISTORY**

**SUMMARY SHEET**

<b>Site name/Address:</b> Sir Winston Churchill Public House, Loughton	
<b>Parish:</b> Loughton	<b>District:</b> Epping Forest
<b>NGR:</b> TQ 4409 9630	<b>Site Code:</b> LUWC 14
<b>Type of Work:</b> Building Recording	<b>Site Director/Group:</b> Genni Elliott, TVAS
<b>Date of Work:</b> 11–15 April 2014	<b>Size of Area Investigated:</b>
<b>Location of Finds/Curating Museum:</b> Chelmsford	<b>Funding source:</b> Spirit Pub
<b>Further Seasons Anticipated?:</b> No	<b>Related HER No.s:</b>
<b>Final Report:</b>	
<b>Periods Represented:</b> 20th century	
<b>SUMMARY OF FIELDWORK RESULTS:</b>	
<p>Externally the pub has not changed much from when it was originally conceived, except with the addition of the entrance porch, added in the 1990s. Internally the pub has been opened up to form two rather than three public rooms. One of the biggest changes was the relocation of the cellar</p>	
<b>Previous Summaries/Reports:</b>	
<b>Author of Summary:</b> Genni Elliott	<b>Date of Summary:</b> 15/04/2014



**Sir Winston Churchill Pub, Loughton, Essex, 2014  
Building Recording**

Figure 1. Location of site in relation to Loughton and Essex.

Reproduced from Ordnance Survey Explorer 174 at 1:12500  
Ordnance Survey Licence 100025880



LUW 14  
(14/44)



**Sir Winston Churchill Pub, Loughton, Essex, 2014  
Building Recording**

Figure 2. Detailed location of site off The Broadway.

Reproduced from Ordnance Survey Digital Mapping under licence.  
Crown copyright reserved. Scale 1:1250



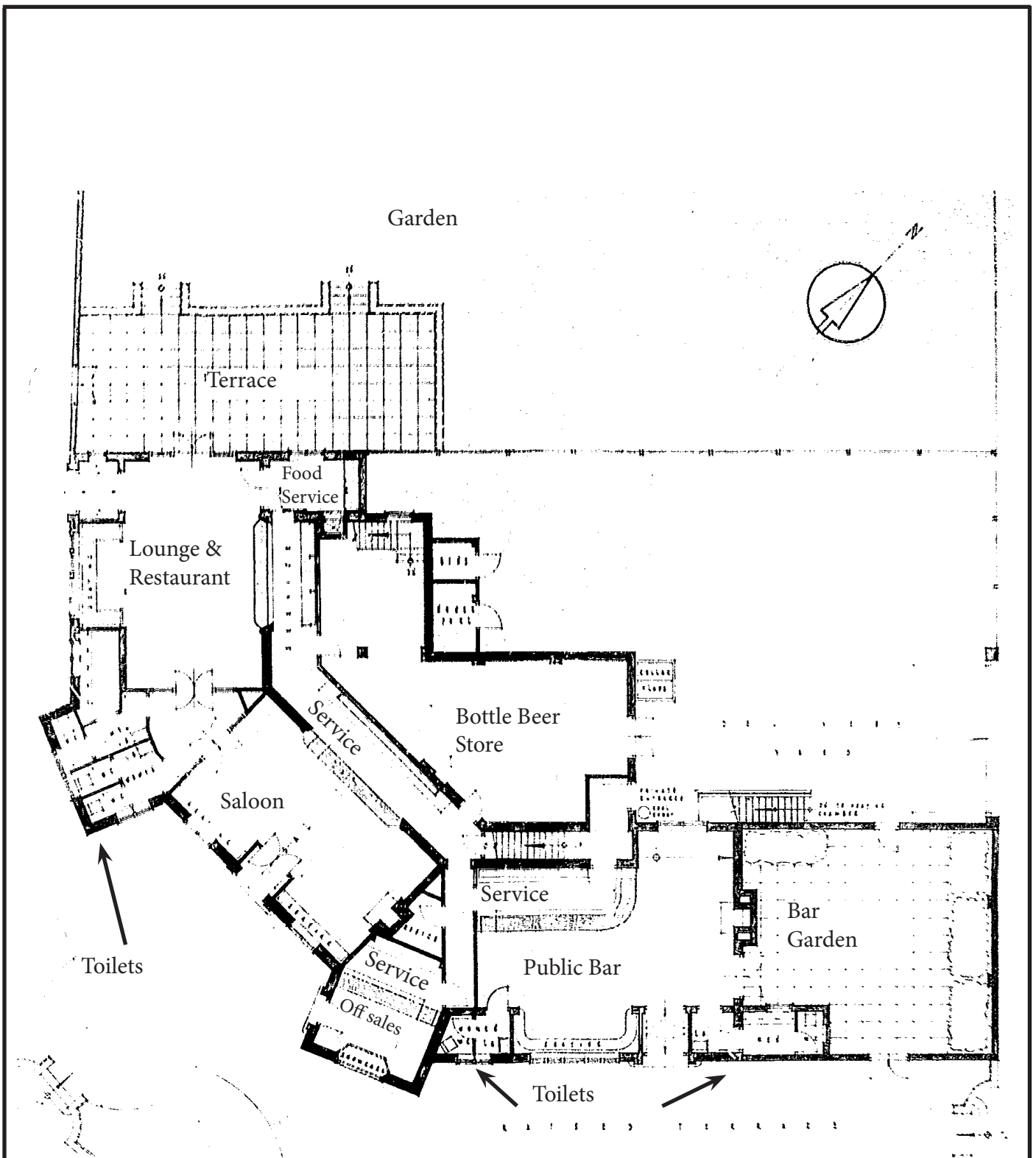
DEVELOPED ELEVATION

LUWC 14  
14/44

**Sir Winston Churchill Pub, Loughton, Essex, 2014**  
**Building Recording**

Figure 3. Main Elevations, 1955.

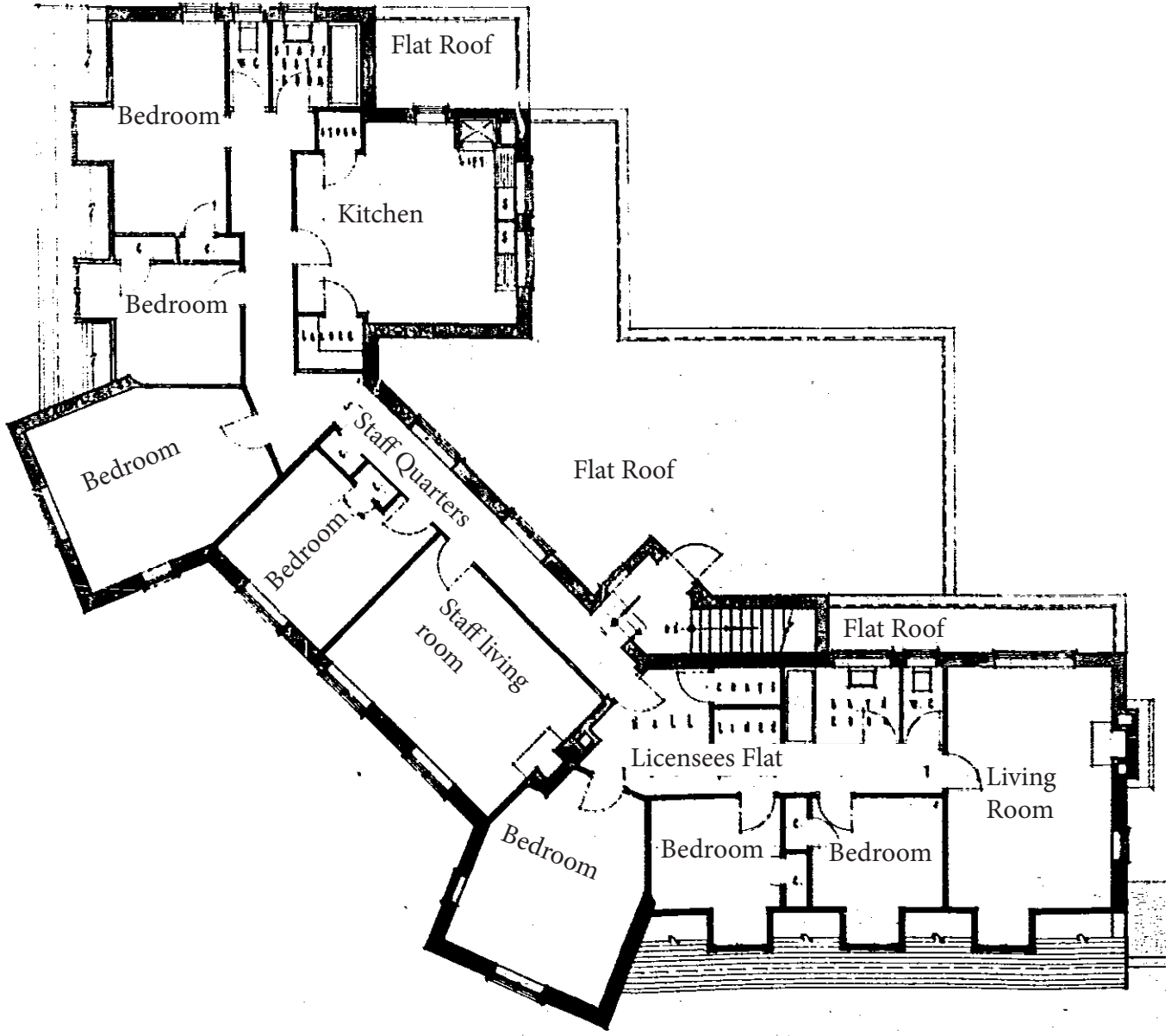
THAMES VALLEY  
ARCHAEOLOGICAL  
SERVICES  
SOUTH



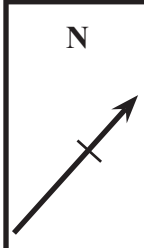
LUWC 14  
14/44

N  
Sir Winston Churchill Pub, Loughton, Essex, 2014  
Building Recording

Figure 4. Ground Floor Plan, 1955.



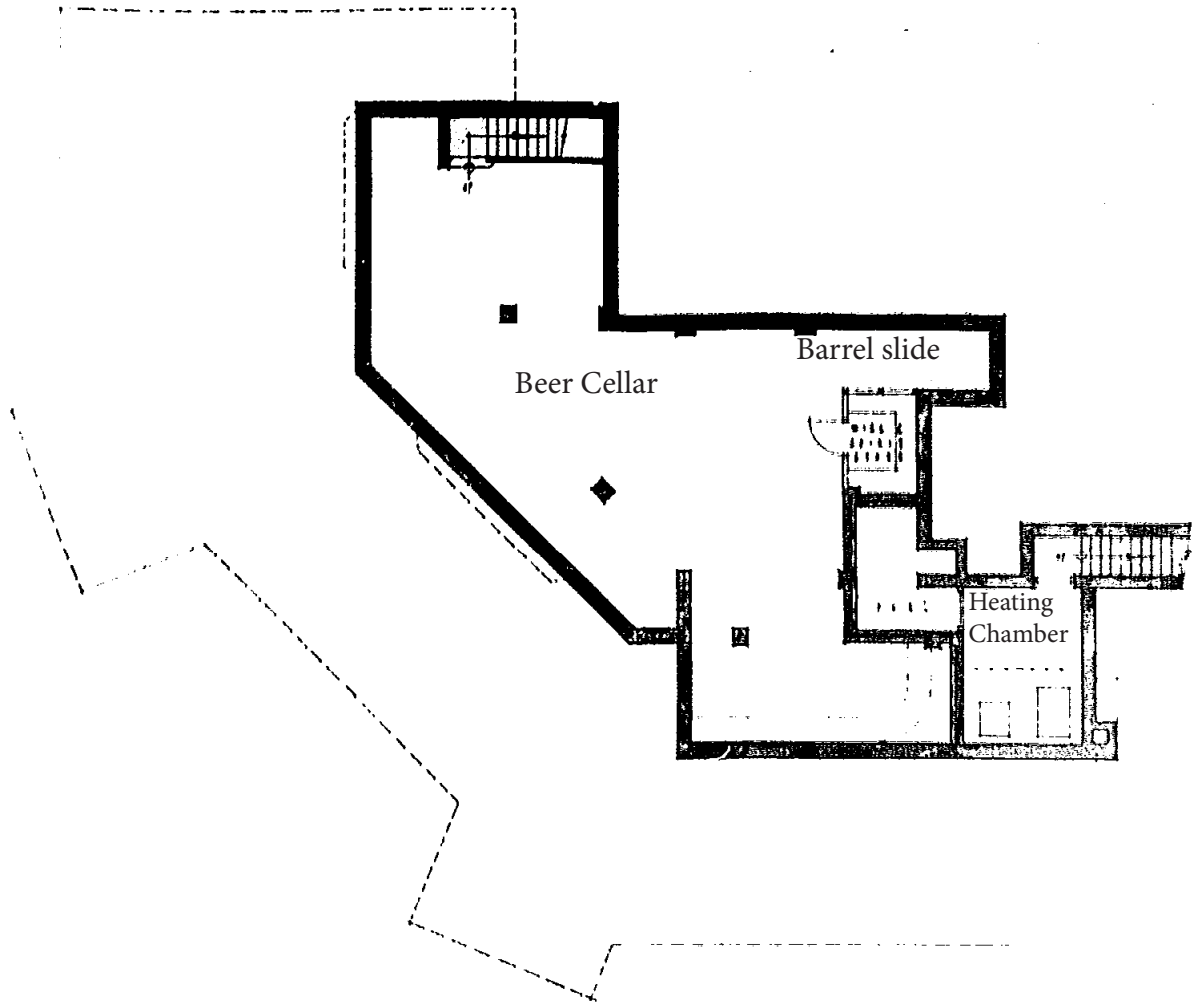
LUWC 14  
14/44



**Sir Winston Churchill Pub, Loughton, Essex, 2014  
Building Recording**

Figure 5. First Floor Plan, 1955.

THAMES VALLEY  
**ARCHAEOLOGICAL**  
 SERVICES  
 SOUTH

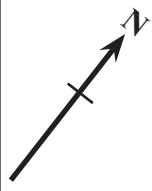


· B A S E M E N T · P L A N

LUWC 14  
14/44

Sir Winston Churchill Pub, Loughton, Essex, 2014  
Building Recording

Figure 6. Cellar Plan, 1955.







East elevation

South elevation

West elevation

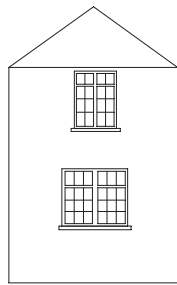
LUWC 14  
14/44

**Sir Winston Churchill Pub, Loughton,  
Essex, 2014  
Building Recording**

Figure 7. Elevations



THAMES VALLEY  
ARCHAEOLOGICAL  
SERVICES  
SOUTH



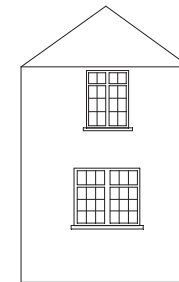
**Southeast Gable End**



**Southeast Elevation**



**Southwest Elevations**



**Southwest Gable End**

LUWC 14  
14/44

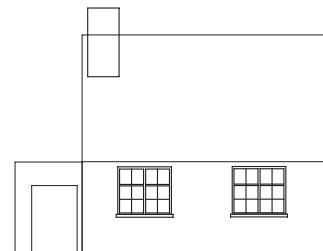
**Sir Winston Churchill Pub, Loughton,  
Essex, 2014  
Building Recording**

Figure 8. Elevations





**Northwest Elevation**



**North Elevation (First Floor)**

LUWC 14  
14/44

**Sir Winston Churchill Pub, Loughton,  
Essex, 2014  
Building Recording**

Figure 9. Elevations





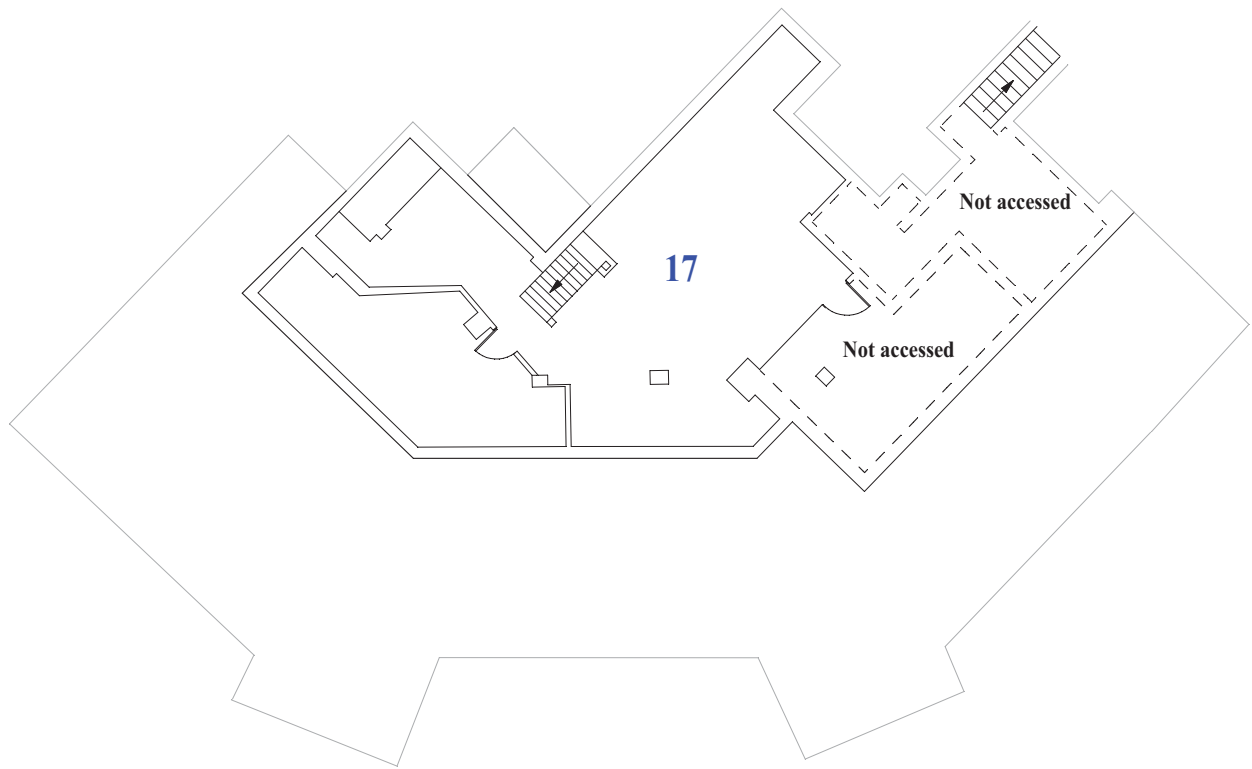
Northeast elevation

LUWC 14  
14/44

**Sir Winston Churchill Pub, Loughton,  
Essex, 2014  
Building Recording**

Figure 10. Elevations





LUWC 14  
(14/44)

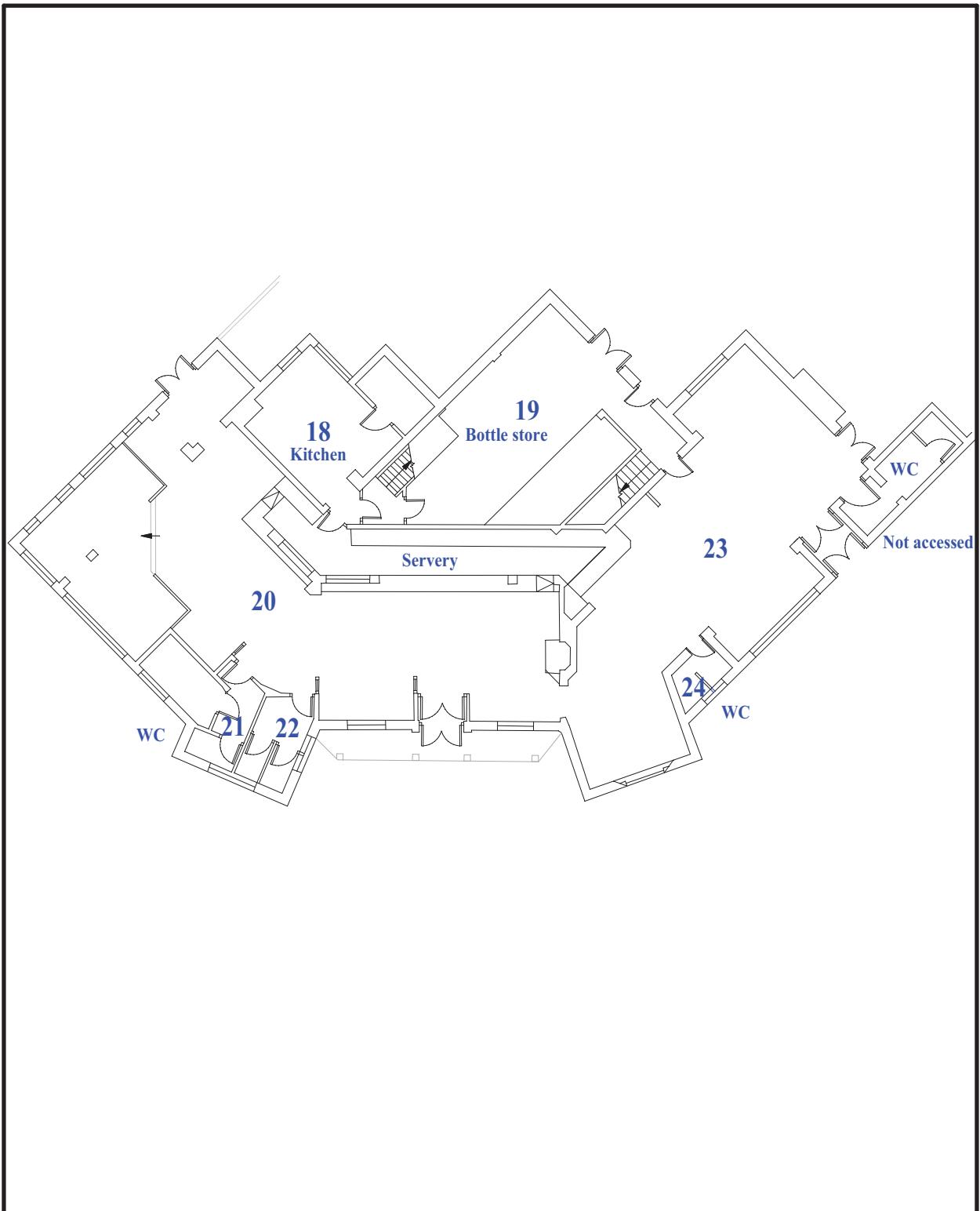


**Sir Winston Churchill Pub, Loughton,  
Essex, 2014  
Building Recording**

Figure 11. Cellar



THAMES VALLEY  
ARCHAEOLOGICAL  
SERVICES  
SOUTH



LUWC 14  
(14/44)



**Sir Winston Churchill Pub, Loughton,  
Essex, 2014  
Building Recording**

Figure 12. Ground floor plan.





Plate 1. Exterior looking N – General shot



Plate 2. Exterior looking N – General view  
Scale: 1m



Plate 3. Exterior looking NW – detail of light



Plate 4. Exterior looking NW – General view  
Scales: 1m and 2m

LUW 14  
(14/44)

Sir Winston Churchill Pub, Loughton, Essex, 2014  
Building Recording

Plates 1 - 4.

THAMES VALLEY  
ARCHAEOLOGICAL  
SERVICES  
SOUTH



Plate 5. Exterior looking SE – General shot



Plate 6. Exterior looking NE – Detail of gate  
Scales: 1m and 2m



Plate 7. Exterior looking SE –General shot



Plate 8. Exterior looking SW – General shot  
Scales: 1m and 2m

LUW 14  
(14/44)

Sir Winston Churchill Pub, Loughton, Essex, 2014  
Building Recording

Plates 5 - 8.

THAMES VALLEY  
ARCHAEOLOGICAL  
SERVICES  
SOUTH





Plate 9. Exterior looking SE – General shot towards stairs  
Scales: 1m and 2m



Plate 10. Exterior looking S – General shot



Plate 11. Room 17 looking SW - General shot  
Scales: 1m and 2m



Plate 12. Room 17 looking NE – Barrel slide  
Scale: 2m

LUW 14  
(14/44)

**Sir Winston Churchill Pub, Loughton, Essex, 2014**  
**Building Recording**

Plates 9 - 12.

THAMES VALLEY  
ARCHAEOLOGICAL  
SERVICES  
SOUTH



Plate 13. Room 17 looking SE – Cold beer store  
Scales: 1m and 2m



Plate 14. Room 18 looking N – General view  
Scales: 1m and 2m



Plate 15. Room 19 looking NE – General shot  
Scales: 1m and 2m



Plate 16. Room 23 looking SE – Detail of coving

**LUW 14  
(14/44)**

**Sir Winston Churchill Pub, Loughton, Essex, 2014  
Building Recording**

Plates 13 - 16.

THAMES VALLEY  
ARCHAEOLOGICAL  
SERVICES  
SOUTH



Plate 17. Room 20 looking NE – Detail of bar  
Scale: 2m



Plate 18. Room 20 looking N towards bar



Plate 19. Room 20 looking NE – Detail of twisted post  
bar support



Plate 20. Room 20 looking E – General view  
Scales: 1m and 2m

LUW 14  
(14/44)

**Sir Winston Churchill Pub, Loughton, Essex, 2014**  
**Building Recording**

Plates 17 - 20.

THAMES VALLEY  
ARCHAEOLOGICAL  
SERVICES  
SOUTH



Plate 21. Room 20 looking NW – General shot  
Scales: 1m and 2m



Plate 22. Room 20 looking E – Detail of fireplace  
Scale: 1m.



Plate 23. Room 23 looking NE – General shot  
Scales: 1m and 2m



Plate 24. Room 23 looking NW to window and radiator  
Scales: 1m and 2m

LUW 14  
(14/44)

**Sir Winston Churchill Pub, Loughton, Essex, 2014**  
**Building Recording**

Plates 21 - 24.

THAMES VALLEY  
ARCHAEOLOGICAL  
SERVICES  
SOUTH



Plate 25. Room 21 looking W – Urinals  
Scale: 2m



Plate 26. Room 22 looking S – Ladies toilet  
Scales: 1m and 2m



Plate 27. Room 1 looking N – General shot to window  
Scale: 1m



Plate 28. Room 2 & 3 looking NW – General shot  
Scales: 1m and 2m

LUW 14  
(14/44)

**Sir Winston Churchill Pub, Loughton, Essex, 2014**  
**Building Recording**

Plates 25 - 28.

THAMES VALLEY  
ARCHAEOLOGICAL  
SERVICES  
SOUTH



Plate 29. Room 4 looking W towards window,  
Scales: 1m and 2m



Plate 30. Room 6 looking S towards window  
Scales: 1m and 2m

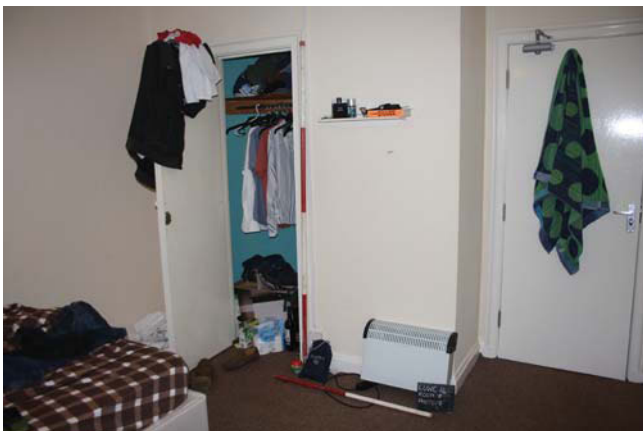


Plate 31. Room 8 looking NW to cupboard  
Scales: 1m and 2m

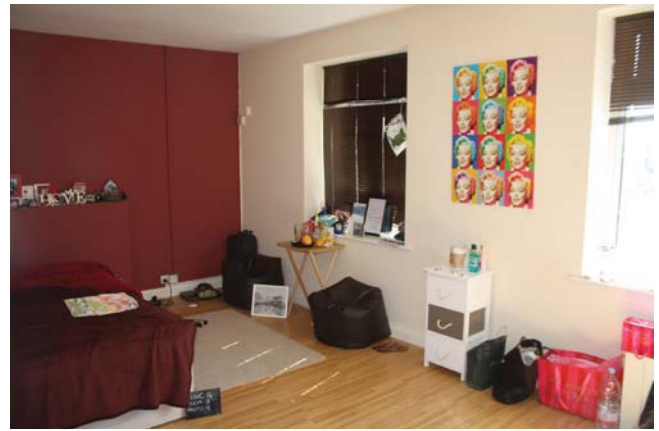


Plate 32. Room 9 looking SE to windows and fireplace

LUW 14  
(14/44)

Sir Winston Churchill Pub, Loughton, Essex, 2014  
Building Recording

Plates 29 - 32.

THAMES VALLEY  
ARCHAEOLOGICAL  
SERVICES  
SOUTH



Plate 33. Room 7 looking W along corridor  
Scales: 1m and 2m

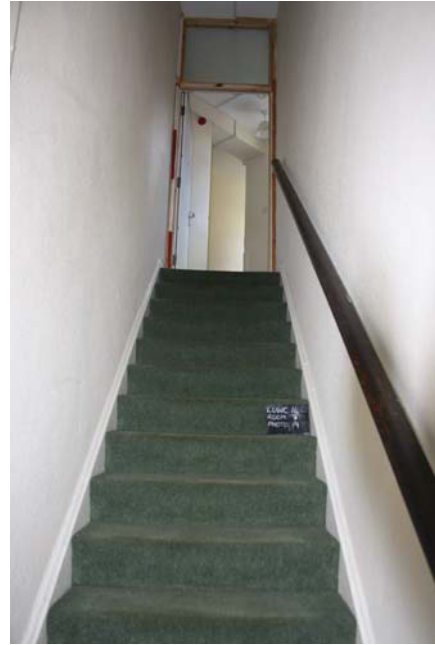


Plate 34. Room 7 looking SW up stairs  
Scale: 2m



Plate 35. Room 15 looking SE to windows  
Scales: 1m and 2m

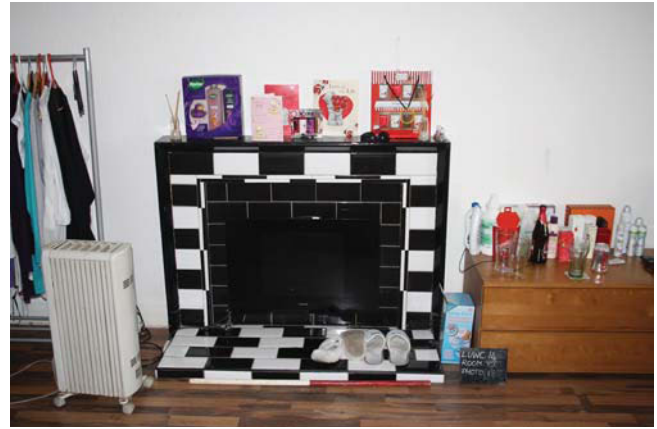


Plate 36. Room 15 looking NE to fireplace  
Scale: 1m

LUW 14  
(14/44)

Sir Winston Churchill Pub, Loughton, Essex, 2014  
Building Recording

Plates 33 - 36.

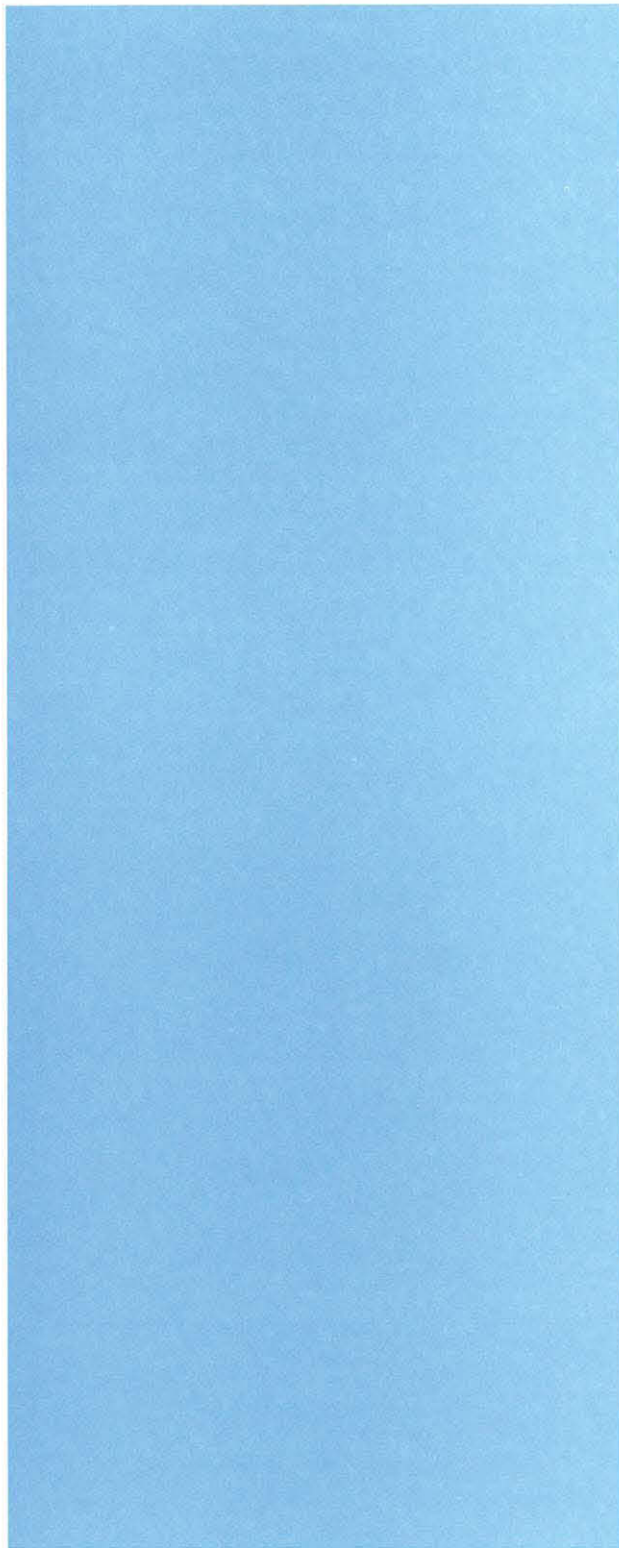
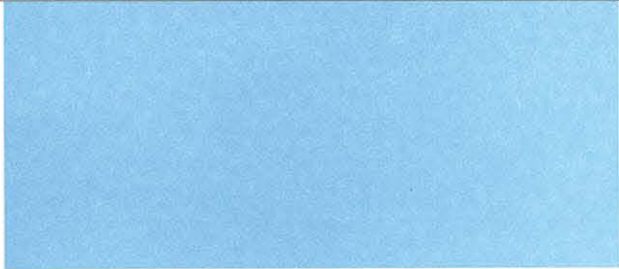
THAMES VALLEY  
ARCHAEOLOGICAL  
SERVICES  
SOUTH

## TIME CHART

	<b>Calendar Years</b>
Modern _____	AD 1901
Victorian _____	AD 1837
Post Medieval _____	AD 1500
Medieval _____	AD 1066
Saxon _____	AD 410
Roman _____	AD 43
Iron Age _____	BC/AD 750 BC
Bronze Age: Late -----	1300 BC
Bronze Age: Middle -----	1700 BC
Bronze Age: Early -----	2100 BC
Neolithic: Late .....	3300 BC
Neolithic: Early .....	4300 BC
Mesolithic: Late .....	6000 BC
Mesolithic: Early .....	10000 BC
Palaeolithic: Upper .....	30000 BC
Palaeolithic: Middle .....	70000 BC
Palaeolithic: Lower .....	2,000,000 BC







**TVAS (South)**  
**77a Hollingdean Terrace, Brighton**  
**Sussex, BN1 7HB**

**Tel: 01273 554198**  
**Fax: 01273 564043**  
**Email: [south@tvas.co.uk](mailto:south@tvas.co.uk)**  
**Web: [www.tvas.co.uk](http://www.tvas.co.uk)**