

T H A M E S      V A L L E Y

ARCHAEOLOGICAL

S E R V I C E S

S O U T H

**Quebec Barracks, Camp Road,  
Bordon, Hampshire**

**Building Recording**

**by Sean Wallis and Genni Elliott**

**Site Code: QBB15/217**

**(SU 8000 3610)**

# **Quebec Barracks, Camp Road, Bordon, Hampshire**

**Building Recording  
For Drew Smith Group**

by Genni Elliott

Thames Valley Archaeological Services Ltd

Site Code QBB  
15/217

**October 2016**

## Summary

**Site name:** Quebec Barracks, Camp Road, Bordon, Hampshire

**Grid reference:** SU 8000 3610

**Site activity:** Building Recording

**Date and duration of project:** 15th September 2015 – 30th March 2016

**Project manager:** Steve Ford

**Site code:** QBB 15/217

**Summary of results:** The site has undergone significant change from when it was first built in the early 1900s, to the extent that none of the original barracks survives. The earliest surviving buildings are those built between 1910 and 1937 to replace the original wooden huts, and consist of the Education Block (Q3), parts of the Combined Mess / Cookhouse (Q4) and the accommodation blocks (Q6-9). The Junior Ranks Club (Q5) formed the third phase of redevelopment with parts of Q4, the garages (Q11) and the accommodation block (Q15) being of relatively recent construction.

Internally much of the historic fabric has been removed but occasionally an original door survives as does some coving, in particular within block Q3.

**Location and reference of archive:** The archive is presently held at Thames Valley Archaeological Services, Reading and will be deposited with Hampshire Cultural Trust in due course.

*This report may be copied for bona fide research or planning purposes without the explicit permission of the copyright holder. All TVAS unpublished fieldwork reports are available on our website:  
[www.tvas.co.uk/reports/reports.asp](http://www.tvas.co.uk/reports/reports.asp).*

Report edited/checked by: Steve Ford ✓ 07.11.16 Steve Preston ✓ 07.11.16
---

# Quebec Barracks, Camp Road, Bordon, Hampshire Building Recording

by Sean Wallis and Genni Elliott

**Report 15/217b**

## **Introduction**

This report documents the results of building recording at Quebec Barracks, Camp Road, Bordon, Hampshire (SU 8000 3610) (Fig. 1). The work was commissioned by Mr Stephen Mudie of Drew Smith Group, Drew Smith House, Mill Court, The Sawmills, Durley, Southampton, Hampshire, SO32 2EJ.

Planning consent (appln no. 28353/004) has been granted by East Hampshire District Council to re-develop parts of the site for housing with associated access, parking and landscaping. Some buildings will be retained and refurbished. The consent is subject to a condition (4) which requires a programme of building recording as well as conditions (2, 3 and 5) relating to archaeology. This report documents the results of the building survey. The archaeological fieldwork programme has been reported on separately (Wallis 2015): the site was considered to have no potential for below-ground archaeological remains.

This is in accordance with the Department for Communities and Local Government's *National Planning Policy Framework* (NPPF 2012), and the District's policies on the historic environment. The fieldwork was undertaken by Sean Wallis between 15th September 2015 and 30th March 2016. The site code is QBB 15/217.

The archive is presently held at Thames Valley Archaeological Services, Reading and will be deposited with Hampshire Cultural Trust and a copy sent to the National Monuments Record in due course.

## **Location, topography and geology**

Quebec Barracks is located on the east side of Camp Road (A325) where it runs through the village of Bordon. To the north and south is housing and accommodation for the barracks, whilst to the east are woodland and the River Wey, and to the west is a modern housing estate on former military land (Fig. 2). The site generally slopes down towards the north-east from approximately 87m above Ordnance Datum close to the southern boundary to about 80m the north-east corner. The underlying geology consists of Folkestone Beds (ferruginous sand), edging onto Sandgate Beds (sandy silt and clay) at the south-eastern extreme of the site (BGS 1975).

## **Historical Background**

The history of the site has been covered in a desk-based assessment (Taylor 2014). In summary, land was purchased in 1863 by the War Department for use in exercises. At the time the nearest garrison was at Aldershot, c. 20 miles away, necessitating an overnight stay in tents. The barracks were laid out in 1899 by the Highland Light Infantry under the direction of the Royal Engineers. Construction halted during the Second Boer War period, resumed in the first decade of the 20th century and continued periodically until the Second World War. The barracks at Bordon were named after successful battles during the North American campaign of the Seven Years' War against France.

The Hampshire Archaeology and Historic Buildings Record records Quebec barracks as having been built during the first decade of the 20th century as temporary timber huts. Quebec and St Lucia barracks were the first to be constructed on the site. The timber huts were replaced between the World Wars with brick-built 100-man blocks; most of these have subsequently been demolished but five double-height blocks survive.

Historic maps (not illustrated) show the evolution of the site, first appearing on the Ordnance Survey map of 1910. The buildings to which this survey relates first appear on the 1937 map (no others are available between 1910 and 1937). Blocks Q3, an earlier form of Q4, and Q6–9 are all present. Block Q5 appears by 1961. The existing site boundary is present by 1978, reducing the size of the Quebec Barracks significantly. Alterations to Q4 have occurred by 1987, creating the existing building. Block Q15 does not appear on the available historic maps and must be later than 1987. Latterly, the barracks housed 4th battalion and 10th training battalion, Royal Electrical and Mechanical Engineers.

## **Methodology**

The building survey was carried out in accordance with guidelines set out by the Royal Commission on Historic Monuments for a level 1 record. The survey comprises a summary statement of the buildings' types, purpose, materials and dates, so far as these are apparent from visual inspection, ground plans and basic photographic record of the exterior and interior. The building and internal rooms numbering follows MoD documents.

## **Description**

### Layout (Fig. 3)

The site was an irregular shape, entirely enclosed with chain link fencing, topped with barbed wire and razor wire. Entrance to the site was in the southwest corner, via a split pedestrian/vehicle chain link gate, topped with

barbed wire (Pl. 1). To the west, outside of the site was a Tarmacked car park. Immediately beyond the gate was a boom barrier. To the east was block Q10 (vehicle control of entry post) consisting of a square, temporary hut with a window on three sides (Pl. 2). On the opposite side of the road was Q14A (a sangar – protected sentry post). It was constructed of concrete, painted in green camouflage, and was circular in shape with additional half-moon protection. The road continued in a straight line in a northerly direction, past block Q4 (sports and social club) before turning to the east past sangar Q14B. The road continues to the east, past three bunkers located in the north-west corner of the site (Pl. 3). The bunkers were rectangular in shape and all that could be seen of them were three low mounds covered in grass. To the south of the road was building Q4, specifically the Sergeants' Mess and the combined mess, whilst to the north was block Q3, specifically the administration squadron headquarters (Pl. 4). Beyond these two blocks the road split to the north, accessing Q13 (electricity substation), sangar Q14C and a car parking area (Pl. 5), to the east, accessing Q5P (RAFP HQ) and sangar Q14D and to the south (Pl. 6) where it continued round block Q4, past block Q5A (Acorn Club) to the east, Q11 (garages) to the west. The road then bent to the south-east (Pl. 7), giving access to Q6 (Centurion) and Q7 (Chieftain) to the west, Q8 (Cromwell), Q9 (Churchill) and two bunkers to the south-west and Q15 (barracks) and sangar Q14E to the south-east. Sangar Q14F (Pl. 8) was located between blocks Q7 and Q8. The sangars encircled the site around the perimeter (clockwise from the entrance, Q14A–F).

### Q3 – Education Block (Fig. 4)

The education block was one of a pair built between 1910 and 1937 according to map evidence. It was roughly square in shape with projecting wings. It was built using brown bricks laid in stretcher bond with cement mortar. Detail was emphasized with orange bricks - a plat band of bricks stood on end, in line with the ground floor windows, bricks stood on end above the windows and a second band just below the roofline (Pl. 9). The windows were all modern, white plastic replacements with mock panes. The roof was complex in design, reflecting the shape of the building with projecting wings on the corners. Each individual part was, however, hipped in design, and covered with slate tiles. A porch had been added above the main entrance on the south side, constructed of brick and glass (Pl. 10). The entrance on the opposite side of the building (north) had been reduced in size with what appeared to be a window removed. The walls to the yard area and the two store rooms on the east side may be a later addition using the same bricks but laid in English bond (Pl. 11).

Entrance to the block was via a pair of wooden panelled doors, located in the centre of the south wall of the block. Immediately upon entry was a set of stairs giving access to the first floor (Pl. 12). To the right was a further door accessing an internal corridor giving access to three offices (Fig. 4; Pl. 13), a chimney breast was

present in room G.05. A window also looked out onto the yard. No access was available to the rest of the building within this section.

The rest of the rooms within the building were inter-linked with access from external doors from the yard (east side) as well as the north and two doors on the south side. The entire width of the south side of the building was given over to a gym (Pls 14–15), the two projecting wings contained a set of stairs to the first floor. Changing rooms (Pl. 16) were located on the west side of the building with a further set of stairs, whilst within the centre of the building, overlooking the yard area (Pl. 17) was a store, an office and a further changing room.

The south-east side of the first floor was the same layout as that below – three offices. The north side of the building was sub-divided into seven rooms, including a kitchen, gym, stores and a conference room. Above the changing rooms, on the west side of the building was a self-contained area including a kitchen (Pl. 18) and three store rooms.

Decoratively the building was plastered and painted in various colours with a carpeted floor; the toilets and changing rooms were tiled. It was possible to see some remains of original features such as wide skirting boards, coving and original four-panel doors (Pls 19-20). All of the original fireplaces had been removed and blocked up (Pl. 21).

#### Q4 – Combined Mess Cookhouse (Fig. 5)

The combined mess cookhouse was built between 1910 and 1937 according to the map evidence, with part of the southern wing removed and the northern wing added between 1982 and 1987, to leave the existing building. It was ‘L-shaped’ with an additional protruding wing to the south. It was a single-storey brick building with the bricks laid in stretcher bond with cement mortar (Pl. 22). Above some of the windows and doors was a line of orange bricks laid on end, like that found in block Q3. The windows had also been replaced with the same plastic ones as those in Q3. However, one original window was still present in the east gable end and consisted of a triple window with white wooden frames of two over two panes (Pl. 22). The roof line was complex reflecting the different builds, which were a mix of half-hipped, flat and gable end.

The original building consisted of two separate east-west aligned buildings that were later linked together (Pl. 23). Building 1 was the larger of the two, located to the north. It had a half-hipped roof, covered in slate tiles. The main entrance was located in the centre of the building, on the north side (Pl. 24). It was square in shape, projecting from the roofline and had a flat roof. On the east and west sides was a small window adjacent to a brick pilaster. An additional two pilasters were located either side of the double entrance door on the north side. Within the two pilasters, above the door, the bricks were laid in vertical stack bond. The doors themselves

were of three-panel design, with a window above. It was accessed up a set of concrete steps. At both the east and west ends was a small additional porch tacked onto the end of the building, with a hipped roof, giving additional access to the building (Pl. 22). On the southern side of the building was a further, modern door and at least two of the windows had been bricked up.

Building 2 (Pl. 23) was located to the south and was substantially smaller. It had the same half-hipped roof, covered in slate tiles. Little external detail could be seen due to the later extensions surrounding the building.

Later additions include a small lean-to shed, located on the south-east corner of building 1, bricks laid in English Garden Wall bond, with an asphalt roof. The gap between buildings 1 and 2 had been in-filled, again with a flat, asphalt roof. An extension wrapped around the east and south sides of building 2 also had a flat, asphalt roof.

At the west end of building 1, located to the south, was the most recent extension according to map evidence, consisting of a building of similar width but with a gable end roof (Pl. 25). Where part of the gable end had been removed it was possible to see the steel roof trusses – these were of fan type.

Internally the building had been modernized and there were few original features; most notably the pilasters within building 1, with a jowled head (Pl. 26). The floors were a combination of carpet and tiles, and the walls of painted plaster, brickwork, or tiled depending on the function of the room. A modern, suspended ceiling had been fitted throughout the building. In terms of function, building 1 had been split into three areas; G.01 a bar and lounge area with a wood panelled bar in the south-west corner of the room and a central, wooden dance floor in the shape of an octagon (Pl. 27); G.02 the dining room; and G.03-G.09, a series of rooms including a staff room, stores and toilets.

The rooms of building 2 consisted of a kitchen (Pl. 28) and associated rooms, including store rooms, toilets, changing rooms and an office. The in-fill between buildings 1 and 2 consisted of a servery, wash-up and additional room (Pl. 29). At the west end of the in-fill was a snooker room, accessed from room G.01. Within the walls of this room it was possible to see blocked windows within building 2 and room G.14 (Pl. 30). The extension wrapping around building 2 (rooms G.35-G.39) contained chemical stores, a pump room and boiler room.

The modern extension, at the west end of the building, consisted of numerous small rooms including stores, the bar cellar, toilets and a prayer room.



#### Q5 – Junior Ranks Club/Guard Room (Fig. 6)

The Junior Ranks Club/Guard Room was built slightly later than the majority of existing buildings at Quebec Barracks, dated from map evidence between 1937–1961. Stylistically it was built in a similar style to the earlier buildings with the same stretcher bond brickwork and vertical bricks above the windows (Pl. 31). The roof was also hipped, but notably covered in ceramic tiles rather than slate tiles. In plan form the building was ‘U-shaped’ with a wing at either end projecting to the west. Around the west side of the building was a covered canopy supported on brick pillars. The building has been extended to the south, clearly seen where the covered canopy does not continue round the extension (Pl. 32). Within the centre of the ‘U’ were a small number of car parking spaces and a raised flower bed (Pl. 33). Within the central wall was a double door and evidence for a blocked door, beside which was a red-painted boot scraper set into the concrete (Pl. 34).

Internally the building was plastered and painted in various colours with a modern, suspended ceiling. The largest room, G.10 consisted of a bar and lounge area (Pls 35-36), located on the east side of the building. The wing to the north was dedicated to the guard room and was separate from the rest of the building. As well as the main guard room (Pl. 37) the rooms were used as stores, sleeping accommodation, a kitchen and toilets. Within room G.01 was a plywood gun rack (Pl. 38). The wing to the south consisted of a store and toilets. The newer extension contained two rooms (G.17–18) of unknown function.

#### Accommodation Blocks (Q6-9)

The four accommodation blocks (Q6-9) were built between 1910 and 1937 according to the map evidence and were of a similar build; the only difference being the addition of a boiler room on blocks Q6 and Q9. They were two-storey, brick-built blocks, with the bricks laid predominantly in stretcher bond, though some variation was present, and bonded in cement mortar. A combination of orange and brown bricks had been used to create coloured panels, with the orange bricks framing brown panels. The windows were tall and narrow, consisting of nine panes in three columns and were of tilt-opening style. Above the windows was a flared arch. The roofs were hipped and covered in slate tiles (Pl. 39). The entrance to each block was located in the centre of one of the long sides and consisted of a pair of three-panelled doors with a window above. This was set within a stone surround with the name of the block placed centrally above the window (Pl. 40). The toilet blocks attached to the rear of the building had flat roofs and smaller windows; there was some variation in the number and size of the windows on each block. The blocks of each pair were joined by a concrete brace between the toilet block of one and the boiler room of the other (Pl. 41).

#### Q6 – Centurian (Skynet) (Fig. 7)

Entrance to the block was via a pair of doors within the centre of the long wall. Opposite the entrance were the stairs to the first floor (Pl. 42), a set of toilets and an external door. Running the length of the block was a central, internal corridor giving access to all of the rooms located on the external walls of the building (Pl. 43). Each side of the entrance contained eight rooms including a toilet – four on each side of the corridor. The size of the rooms varied slightly between the two sides. The layout on the first floor was similar but with minor variations in room functions and sizes in the western end. A toilet was located on the half-landing of the stairs.

The boiler room was located to the rear of the building and had a separate, external access.

Decoratively the block had plain plastered walls and ceilings, painted white with blue woodwork, except the toilets which had tiled walls. The floors were tiled or carpeted dependent on the function of the room. The radiators were of column type and also painted blue (Pl. 43). The stairs were dog-legged with a half landing, located in the centre of the building. The balusters had a square profile and were of metal, painted blue with a black handrail. A second handrail was attached to the wall (Pl. 42).

The utility area (room 1.12) contained wooden benches around the walls with a shelf and hanging rail above at one end and drying racks at the other end (Pls 44-45).

#### Q7 – Chieftain (Relay) (Fig. 8)

Chieftain block was not accessed but had the same layout as Q8 – Cromwell block.

#### Q8 – Cromwell (Echo) (Fig. 9)

Entrance to the block was via a pair of doors within the centre of the long wall. Opposite the entrance were the stairs to the first floor, a set of toilets and an external door. Running the length of the block was a central, internal corridor giving access to all of the rooms located on the external walls of the building. Each side of the entrance contained nine rooms, four on each side and a store at the end of the corridor. The size and function of some of the rooms varied between the two sides. The layout on the first floor was identical with what appeared to be the same room functions. The toilet was located on the half-landing of the stairs.

Decoratively the walls and ceilings were plastered and painted, with carpeted or tiled floors. The woodwork was painted a taupe colour. The doors to the personal rooms each had a silver, metal plate with the room number, below which was a temporary laminated card (Pl. 46). The card gave details of service number, rank, name and company.

The male toilets (room G21) was tiled in green tiles, three-quarters of the way up the walls, above which was peach painted plaster. The room had a modern suspended ceiling and modern, white porcelain furniture.

Room G18 was located off of room G19 and consisted of a drying room and utility room. The floor throughout was tiled and the walls of cream, painted plaster. The drying room (G18) contained a rail holding coat-hangers and the utility room (G19) contained a raised kitchen worktop, two sinks and a pair of cupboards mounted on the wall. Beneath the sink was plumbing for a washing machine. Above the sinks were three rows of white tiles (Pls 47-48).

#### Q9 – Churchill (Telstar) (Fig. 10)

Churchill block was not accessed but had the same layout as Q8 – Cromwell block, with the exception of a boiler room located to the rear of the building with a separate, external access.

#### Q11 – Garages

The garage block (Pl. 49) was a relatively recent addition, according to map evidence it was built between 1982 and 1987. The block is brick built with the end wall laid in English bond, each dividing column laid in header bond and the rows above the doors laid in stretcher bond, and a flat roof. The block contained eight garages.

#### Q15 – Challenger (Orion) (Fig. 11)

Challenger block (Q15) is a late addition to the site, not appearing on any of the available historic maps, therefore dating to after 1987. It consisted of a large, temporary hut (Transline) built on concrete blocks to accommodate the variation in ground level (Pl. 50). The entrance was located centrally on the west side up a set of concrete steps. The entire building could be sub-divided into 14 bays either side of a single continuous corridor, with the entry located in bay 8 and utilities located in bay 7. Bays 1-6 and 9-14 consisted of two ensuite bedrooms; one located on either side of the building and each with its own window. The central corridor had external doors at either end.

Within bay six was three rooms including a bathroom and kitchen. Bay seven contained the main entrance, a room located off the kitchen and a further room (G.17) only accessed externally, presumably an equipment store.

## **Conclusion**

The barracks site has undergone significant change from when it was first built in the early 20th century, to the extent that none of the original barracks survives. The earliest surviving buildings are those built between 1910

and 1937 to replace the original wooden huts, and consist of the Education Block (Q3), parts of the Combined Mess / Cookhouse (Q4) and the accommodation blocks (Q6-9). Only the pair of buildings Q8 and Q9 are on the old alignment and may represent the earliest phase of construction. The Junior Ranks Club (Q5) formed the third phase of redevelopment with parts of Q4, the garages (Q11) and the accommodation block (Q15) being of relatively recent construction.

Internally much of the historic fabric has been removed but occasionally an original door survives as does some coving, in particular within block Q3.

## References

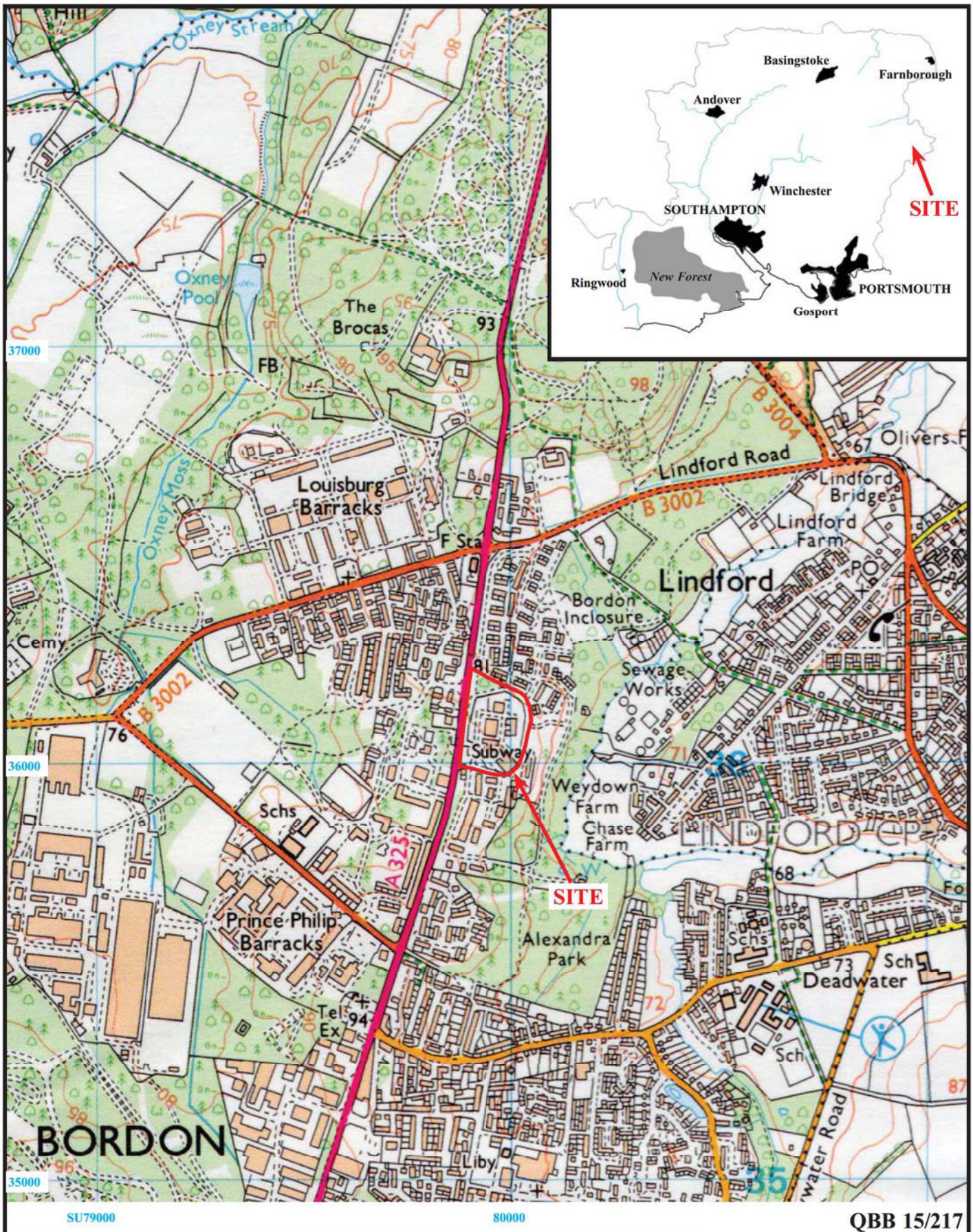
- BGS, 1975, *British Geological Survey*, 1:50000, Sheet 300, Drift Edition, Keyworth
- NPPF 2012, *National Planning Policy Framework*, Dept Communities and Local Govt, London
- RCHME, 1996, *Recording Historic Buildings: a descriptive specification*, 3rd edn, Roy Comm Hist Monuments (England), London
- Taylor, J, 2014, 'Quebec Barracks Site, Camp Road, Bordon, Hampshire. An Archaeological Desk-based Assessment', Pre-Construct Archaeology unpubl rep **R11619**, Winchester
- Wallis, S, 2015, 'Quebec Barracks, Camp Road, Bordon, Hampshire: an archaeological evaluation', TVAS unpubl rep **15/217**, Reading

## APPENDIX 1: Digital Photographic Catalogue

<i>Cat. No.</i>	<i>Location</i>	<i>Direction</i>	<i>Description</i>
1	External	NE	Across car park to Q6 and Q7
2	External	N	Entrance gate [PI. 1]
3	External	NE	Vehicle control of entry post, Q10 [PI. 2]
4	External	NNW	Sangar, Q14A
5	External	NNW	Sangar, Q14B and bunkers
6	External	E	View down road showing Q3 and Q4 [PI. 4]
7	External	E	Oblique of Q4
8	External	N	Bunker detail [PI. 3]
9	External	SE	Oblique of Q4 entrance [PI. 24]
10	External	SW	Oblique of Q4, west end [PI. 22]
11	External	NW	Oblique of Q4, west end
12	External	W	Q4 later additions and extensions [PI. 23]
13	External	NW	Oblique of Q4 SS showing truss detail [PI. 25]
14	External	SW	Garages, Q11 [PI. 49]
15	External	SW	Oblique of Q6 and Q7 [PI. 39]
16	External	SE	Oblique of Q8 and Q9
17	External	SE	Q9 and view to housing beyond the site limits [PI. 7]
18	External	SW	Q9 main entrance detail
19	External	W	Oblique of Q9
20	External	E	Gable end of Q9
21	External	E	Rear of Q9
22	External	NNW	Rear of Q9
23	External	NNW	Rear of Q9
24	External	NW	Rear of Q8 and Q9 [PI. 41]
25	External	NE	Q8 main entrance detail [PI. 40]
26	External	NE	Oblique of Q8
27	External	SE	Sangar, Q14F [PI. 8]
28	External	E	Sangar, Q14E
29	External	N	Oblique of Q15 [PI. 50]
30	External	SE	Oblique of Q15
31	External	S	Gable end of Q15
32	External	N	Sangar, Q14D
33	External	S	Across car park to Q5
34	External	SSW	Across car park to Q4 and Q5 [PI. 5]
35	External	NE	Security camera and sangar, Q14C
36	External	SW	Across car park to Q3
37	External	SW	Oblique of Q3
38	External	SW	Yard gates and wall of Q3 [PI. 11]
39	External	S	Alterations around the door, Q3
40	External	NE	Oblique of Q3 [PI. 9]
41	External	NW	Main entrance of Q3 [PI. 10]
42	External	S	View along road, showing Q4, Q5 and Q8 [PI. 6]
43	External	SE	Oblique of Q5 [PI. 31]
44	External	SW	Cycle store and Q5
45	External	SW	Q5 showing a cellar level
46	External	SW	Rear of Q5 and decking
47	External	NW	Q5 extension
48	External	NE	Oblique of Q5 extension
49	External	NE	Oblique of Q5 [PI. 32]
50	External	N	View up the road showing Q4 and Q5
51	External	NE	Oblique of Q5 [PI. 33]
52	External	SW	Oblique of Q5
53	External	SE	Timber entrance porch
54	External	E	Blocked door
55	External	ESE	Boot scraper [PI. 34]
56	External	S	Along covered porch
57	External	WSW	View to Q3
58	External	SW	View to Q5, Q9 and Q15
59	External	NW	Sangar, Q14E
60	External	W	View to Q9
61	External	N	View to Q8 and Q9
62	External	NNW	Oblique of Q8 and Q9
63	External	NNW	View to Q7
64	External	NE	View to Q7
65	Cromwell	NE	Stairs
66	Cromwell	NW	Along corridor
67	Cromwell	S	Window detail
68	Cromwell	S	Urinals

<i>Cat. No.</i>	<i>Location</i>	<i>Direction</i>	<i>Description</i>
69	Cromwell	SW	Door label detail [PI. 46]
70	Cromwell	SE	View to drying room [PI. 47]
71	Cromwell	NW	Utility room [PI. 48]
72	Cromwell	S	Upstairs landing
73	Centurian	S	Stairs [PI. 42]
74	Centurian	E	Along corridor [PI. 43]
75	Centurian	E	View into bedrooms
76	Centurian	SE	Showers
77	Centurian	SW	'Ablutions' door
78	Centurian	S	Stores
79	Centurian	SW	Utility room drying racks [PI. 44]
80	Centurian	SE	Utility room benches [PI. 45]
81	Centurian	S	Top of stairs to toilets
82	Q3	N	Main entrance to stairs [PI. 12]
83	Q3	ENE	Internal door detail
84	Q3	S	Door poster
85	Q3	S	Oblique of room G.04
86	Q3	NE	View to window and door G.05 [PI. 13]
87	Q3	SE	General view of the gym [PI. 14]
88	Q3	SW	General view of the gym
89	Q3	WSW	Door detail
90	Q3	NW	General view of the gym [PI. 15]
91	Q3	NE	General view of the gym
92	Q3	SE	Changing rooms [PI. 16]
93	Q3	NE	Toilet
94	Q3	S	Shower
95	Q3	NW	Yard area [PI. 17]
96	Q3	SSE	Yard area
97	Q3	NW	Oblique of the store, G.08
98	Q3	SE	Oblique of the store, G.08
99	Q3	NE	Original door [PI. 19]
100	Q3	W	Along corridor [PI. 20]
101	Q3	NE	Kitchen
102	Q3	SW	To blocked fireplace [PI. 21]
103	Q3	NE	Serving hatch in wall
104	Q3	E	Along corridor
105	Q3	S	Oblique of Q.M. office, 1.04
106	Q3	W	Kitchen [PI. 18]
107	Q3	NW	Serving hatch
108	Q3	NNE	Oblique to gym stores
109	Q3	SE	Oblique to stores
110	Q3	SE	Stores detail, including safe
111	Q3	N	Along corridor
112	Q3	SE	Oblique to window, 1.13
113	Q3	NW	Stair detail
114	Q4	ESE	View of ration store
115	Q4	S	Store shelving
116	Q4	W	Ration store label
117	Q4	NW	Oblique to toilets and corridor
118	Q4	N	Toilets
119	Q4	E	View to window
120	Q4	W	Staff room
121	Q4	SW	Blocked opening
122	Q4	E	Staff room
123	Q4	SW	Oblique of dining room
124	Q4	NW	Oblique of dining room [PI. 26]
125	Q4	N	Cloakroom detail
126	Q4	SW	View to bar [PI. 27]
127	Q4	E	View of lounge
128	Q4	SE	Servery [PI. 29]
129	Q4	NE	Servery
130	Q4	SE	Kitchen [PI. 28]
131	Q4	ESE	Snooker room showing blocked windows [PI. 30]
132	Q4	SW	Prayer room with partially removed ceiling
133	Q4	SW	Corridor
134	Q5	E	Oblique of room G.05
135	Q5	NE	Oblique of kitchen and toilet
136	Q5	SE	Oblique to G.07
137	Q5	NNW	Oblique of room G.05
138	Q5	N	Tannoy system detail
139	Q5	WSW	Guard room [PI. 37]

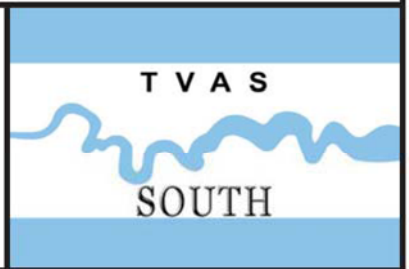
<i>Cat. No.</i>	<i>Location</i>	<i>Direction</i>	<i>Description</i>
140	Q5	S	Gun rack <b>[Pl. 38]</b>
141	Q5	SE	Oblique to gun racks
142	Q5	NE	Oblique room G.02
143	Q5	SW	View to counter
144	Q5	S	Lounge
145	Q5	N	Lounge <b>[Pl.35]</b>
146	Q5	SE	Bar <b>[Pl. 36]</b>
147	Q5	SW	Toilets
148	Q5	SW	Oblique of room G.18
149	Q5	SE	Oblique of room G.17
150	Q5	N	Room G.17



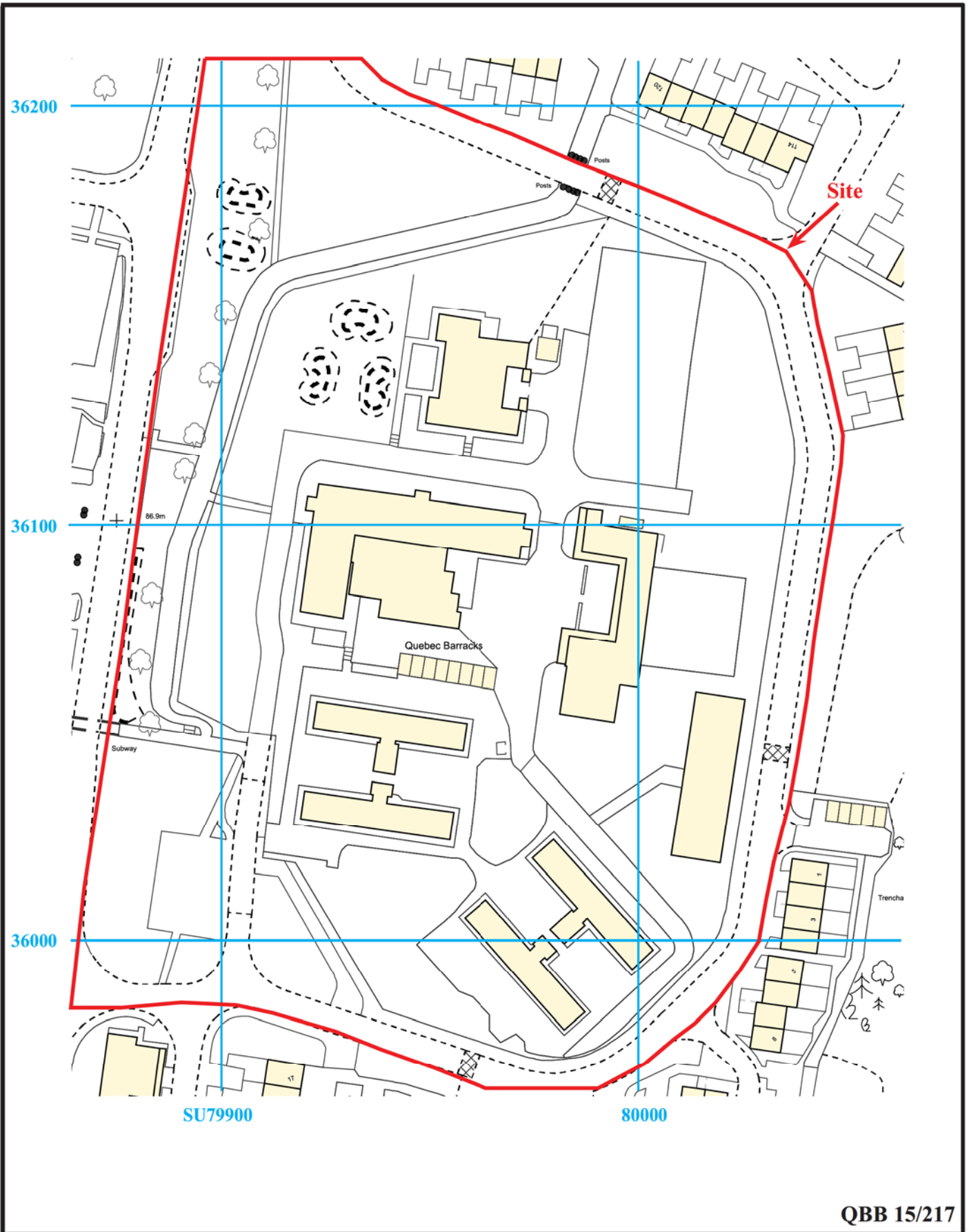
**Quebec Barracks, Camp Road,  
Bordon, Hampshire, 2015  
Building Recording**

Figure 1. Location of site within Bordon and Hampshire.

Reproduced from Ordnance Survey Explorer 133 at 1:12500  
Ordnance Survey Licence 100025880







QBB 15/217

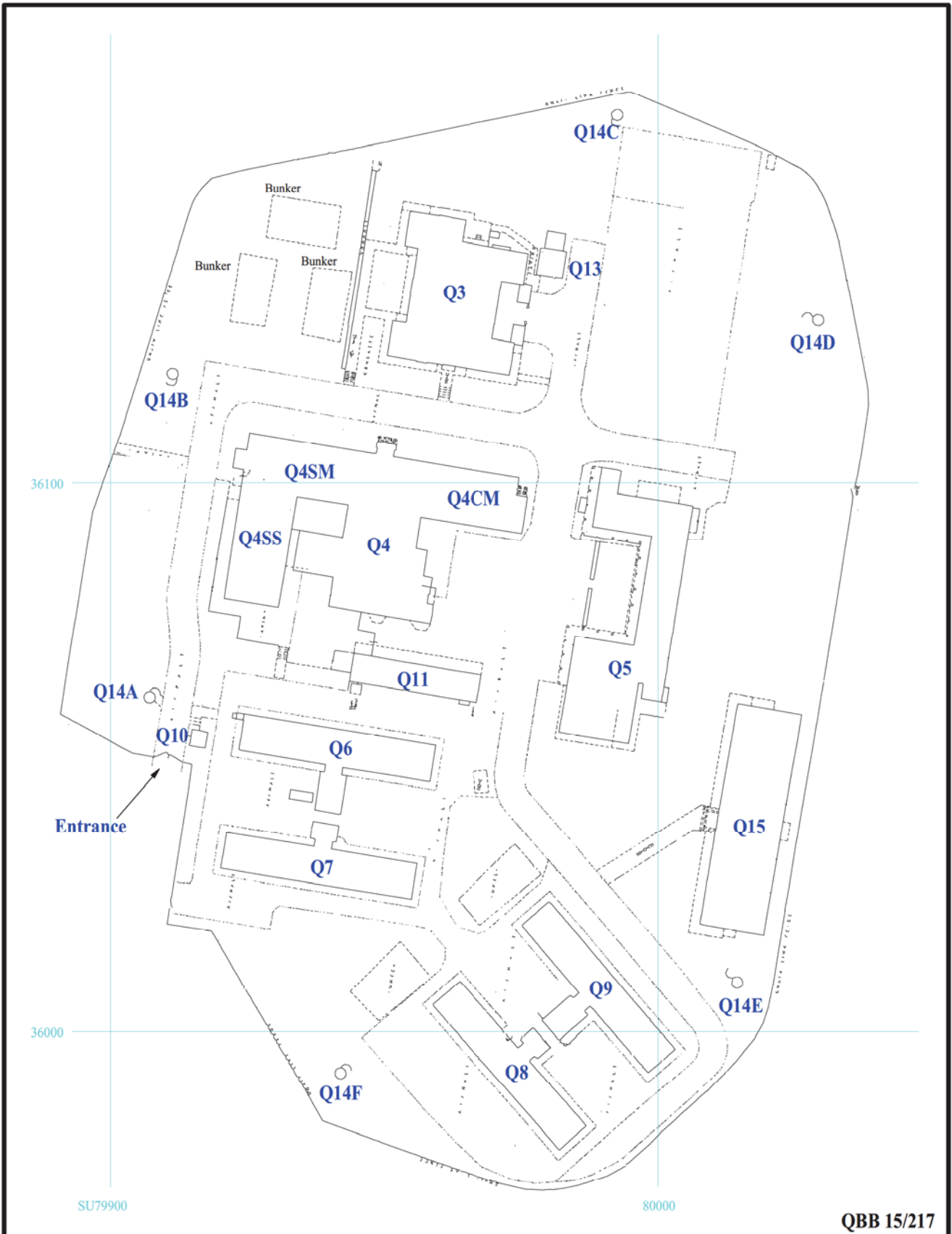


**Quebec Barracks, Camp Road,  
Bordon, Hampshire, 2015  
Building Recording**

Figure 2. Detailed location of site.

Reproduced from Ordnance Survey digital mapping at 1:1250.  
Crown Copyright reserved.





**Quebec Barracks, Camp Road,  
Bordon, Hampshire, 2015  
Building Recording**

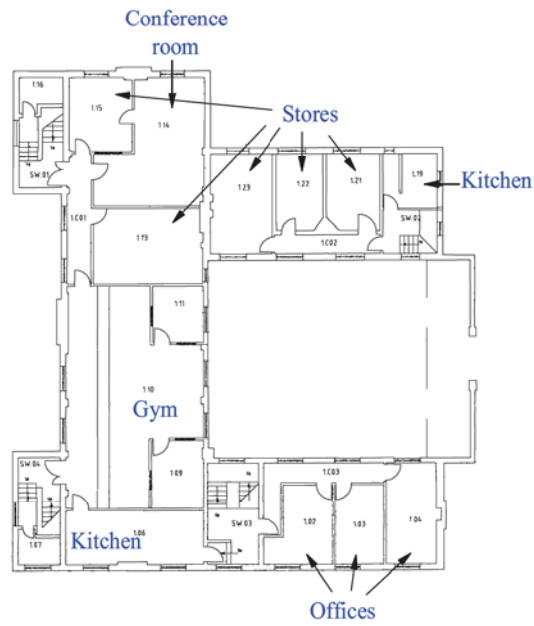
Figure 3. Site Plan



QBB 15/217



**Ground Floor**



**First Floor**

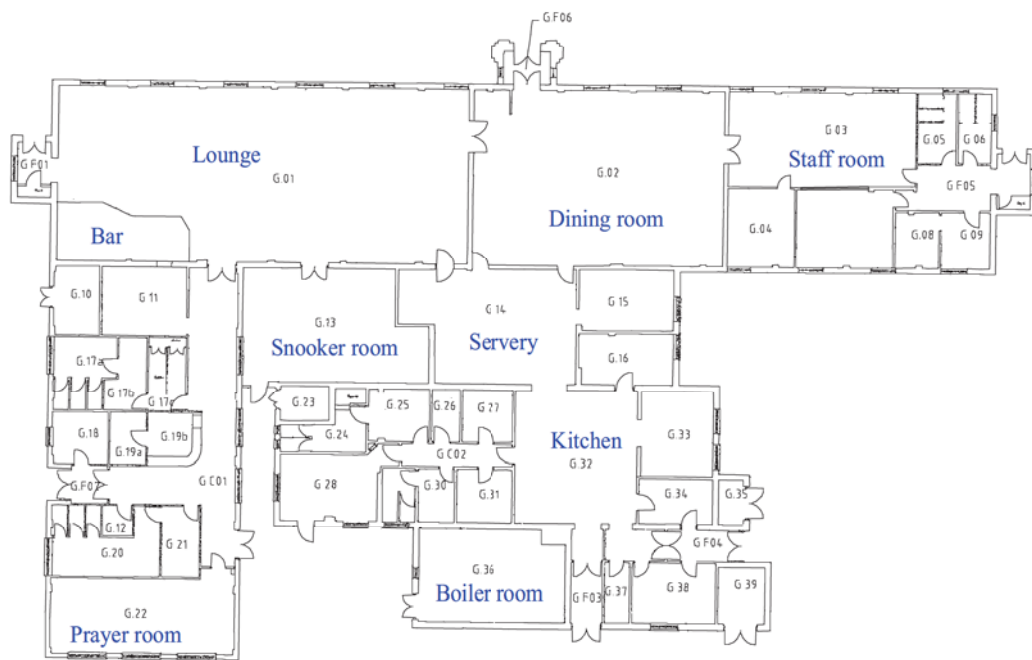
QBB 15/217



**Quebec Barracks, Camp Road,  
Bordon, Hampshire, 2015  
Building Recording**

Figure 4. Q3 - Education Block





QBB 15/217

**Quebec Barracks, Camp Road,  
Bordon, Hampshire, 2015  
Building Recording**

Figure 5. Q4 - Combined Mess Cookhouse

0 20m





QBB 15/217

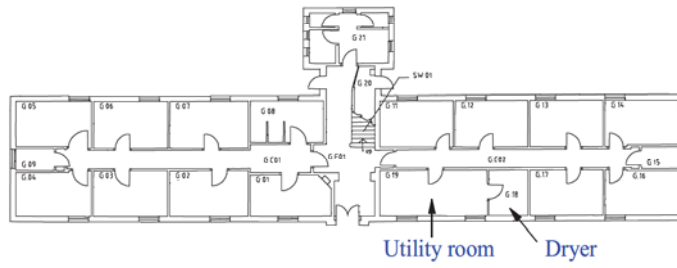


**Quebec Barracks, Camp Road,  
Bordon, Hampshire, 2015  
Building Recording**

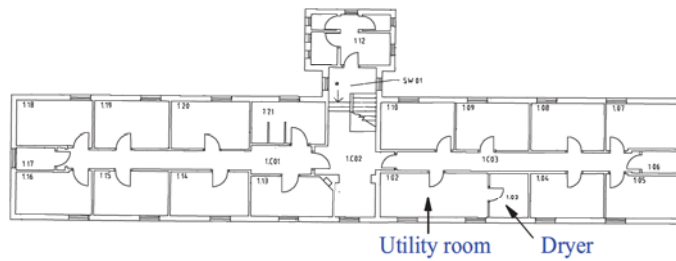
Figure 6. Q5 - Junior Ranks Club







**Ground Floor**



**First Floor**

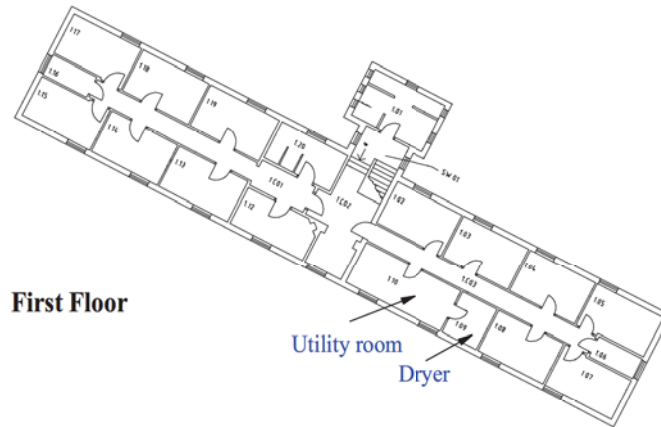
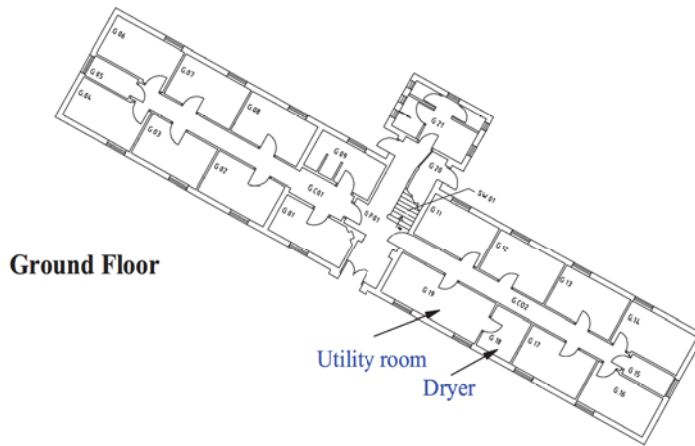
QBB 15/217



**Quebec Barracks, Camp Road,  
Bordon, Hampshire, 2015  
Building Recording**

Figure 8. Q7 - Chieftain Block





QBB 15/217



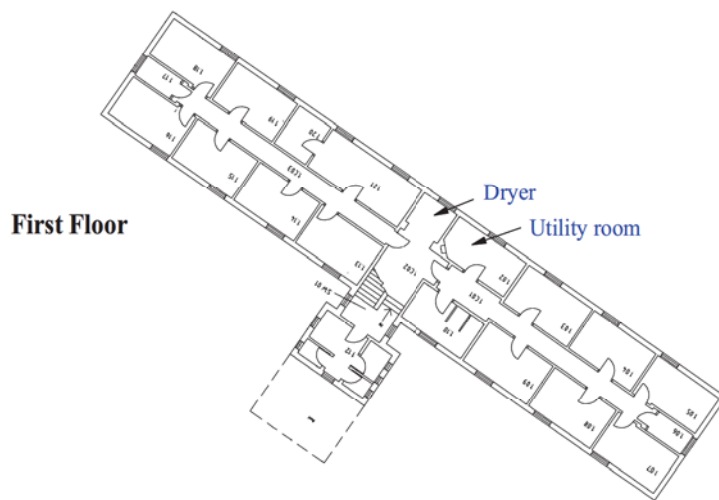
**Quebec Barracks, Camp Road,  
Bordon, Hampshire, 2015  
Building Recording**

Figure 9. Q8 - Cromwell Block





**Ground floor plan not available and no entry possible,  
assumed to be the same as Q08 Cromwell Block but  
with a boiler room to the rear.**



**First Floor**

Dryer  
Utility room

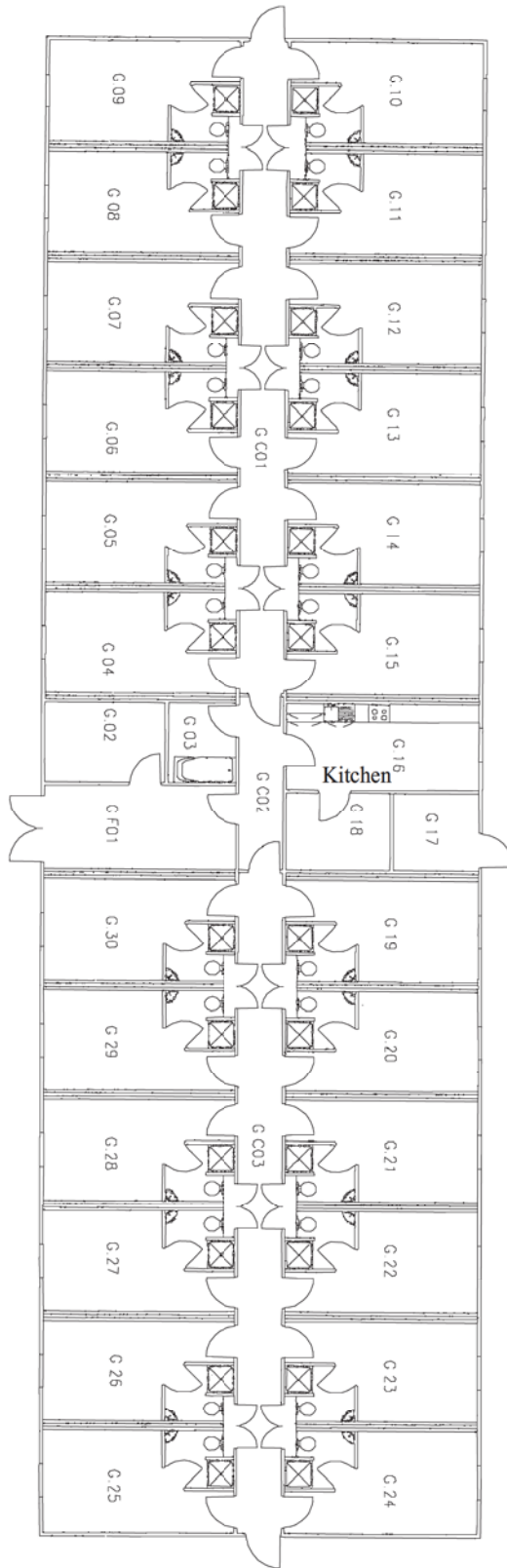
QBB 15/217



**Quebec Barracks, Camp Road,  
Bordon, Hampshire, 2015  
Building Recording**

Figure 10. Q9 - Churchill Block





QBB 15/217

**Quebec Barracks, Camp Road,  
Bordon, Hampshire, 2015  
Building Recording**

Figure 11. Q15 - Challenger Block

0 10m





Plate 1. Entrance gate, looking north.



Plate 2. Vehicle control of entry post, Q10, looking north-east.



Plate 3. Bunker detail, looking north.



Plate 4. View down road showing Q3 and Q4, looking east.



Plate 5. Across car park to Q4 and Q5, looking south-southwest.



Plate 6. View along road, showing Q4, Q5 and Q8, looking south.

**QBB 15/217**

**Quebec Barracks, Camp Road,  
Bordon, Hampshire, 2015  
Building Recording**

Plates 1 - 6.





Plate 7. Along road to Q9 and housing beyond site limits, looking southeast.



Plate 8. Sangar, Q14F, looking southeast.



Plate 9. Oblique of Q3, looking northeast.



Plate 10. Main entrance of Q3, looking northeast.



Plate 11. Yard gates and wall of Q3, looking southwest.



Plate 12. Q3, main entrance and stairs, looking north.

**QBB 15/217**

**Quebec Barracks, Camp Road,  
Bordon, Hampshire, 2015  
Building Recording**

Plates 7 - 12.

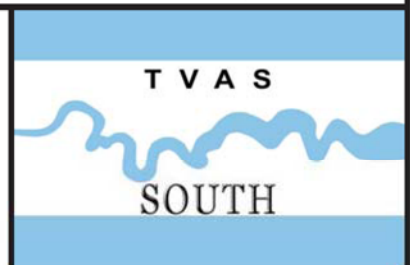




Plate 13. Q3, view to window and door of G.05, looking northeast.



Plate 14. Q3, general view of the gym, looking southeast.



Plate 15. Q3, general view of the gym, looking northwest.



Plate 16. Q3, the changing rooms, looking southeast.

QBB 15/217

Quebec Barracks, Camp Road,  
Bordon, Hampshire, 2015  
Building Recording

Plates 13 - 16.





Plate 17. Q3, yard area, looking northwest.



Plate 18. Q3, kitchen, looking west.



Plate 19. Q3, an original door, looking northeast.



Plate 20. Q3, along the corridor, looking west.

QBB 15/217

Quebec Barracks, Camp Road,  
Bordon, Hampshire, 2015  
Building Recording

Plates 17 - 20.

T V A S  
SOUTH



Plate 21. Q3, view to blocked fireplace, looking southwest.



Plate 22. Oblique view of Q4, west end, looking southwest.



Plate 23. Rear of Q4 showing later additions and extensions, looking west.



Plate 24. Oblique view of Q4 main entrance, looking southeast.



Plate 25. Oblique of Q4SS showing truss detail, looking northwest.



Plate 26. Q4, oblique of dining room, looking northwest.

**QBB 15/217**

**Quebec Barracks, Camp Road,  
Bordon, Hampshire, 2015  
Building Recording**

Plates 21 - 26.





Plate 27. Q4, view to bar, looking southwest.



Plate 28. Q4, Kitchen, looking southeast.

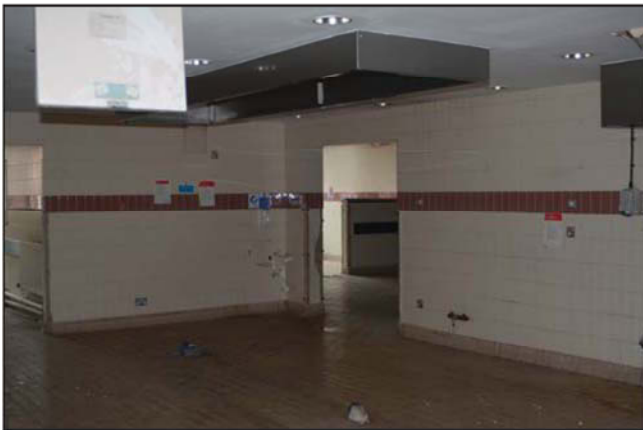


Plate 29. Q4, servery, looking southeast.



Plate 30. Q4, snooker room showing blocked windows, looking east-southeast.



Plate 31. Oblique of Q5, looking southeast.



Plate 32. Oblique of Q5 showing the extension, looking northeast.

**QBB 15/217**

**Quebec Barracks, Camp Road,  
Bordon, Hampshire, 2015  
Building Recording**

Plates 27 - 32.







Plate 33. Oblique of Q5 showing central area, looking northeast.



Plate 34. Bootscraper, looking east-southeast.



Plate 35. Q5, Lounge, looking north.



Plate 36. Q5, bar, looking southeast.



Plate 37. Q5, guardroom, looking west-southwest.



Plate 38. Q5, gun rack, looking south.

QBB 15/217

Quebec Barracks, Camp Road,  
Bordon, Hampshire, 2015  
Building Recording

Plates 33 - 38.





Plate 39. Oblique of Q6 and Q7, looking southwest.



Plate 40. Q8, main entrance detail, looking northeast



Plate 41. Rear of Q8 and Q9, looking northeast.

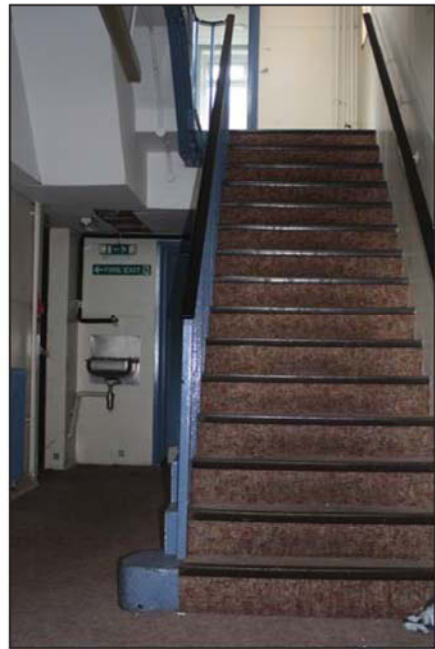


Plate 42. Q6, Stairs, looking south.

QBB 15/217

Quebec Barracks, Camp Road,  
Bordon, Hampshire, 2015  
Building Recording

Plates 39 - 42.





Plate 43. Q6, view along corridor, looking east.



Plate 44. Q6, utility room drying racks, looking southwest.



Plate 45. Q6, utility room benches, looking southeast.



Plate 46. Q8, door label detail, looking southwest.

QBB 15/217

Quebec Barracks, Camp Road,  
Bordon, Hampshire, 2015  
Building Recording

Plates 43 - 46.

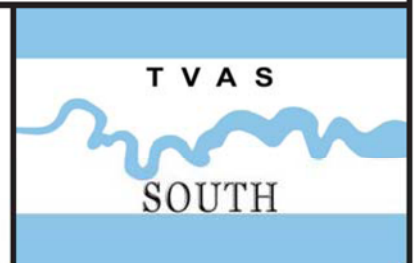




Plate 47. Q8, view to drying room, looking southeast.



Plate 48. Q8, utility room, looking northwest.



Plate 49. Q11, garages, looking southwest.



Plate 50. Oblique of Q15, looking north.

QBB 15/217

**Quebec Barracks, Camp Road,  
Bordon, Hampshire, 2015  
Building Recording**

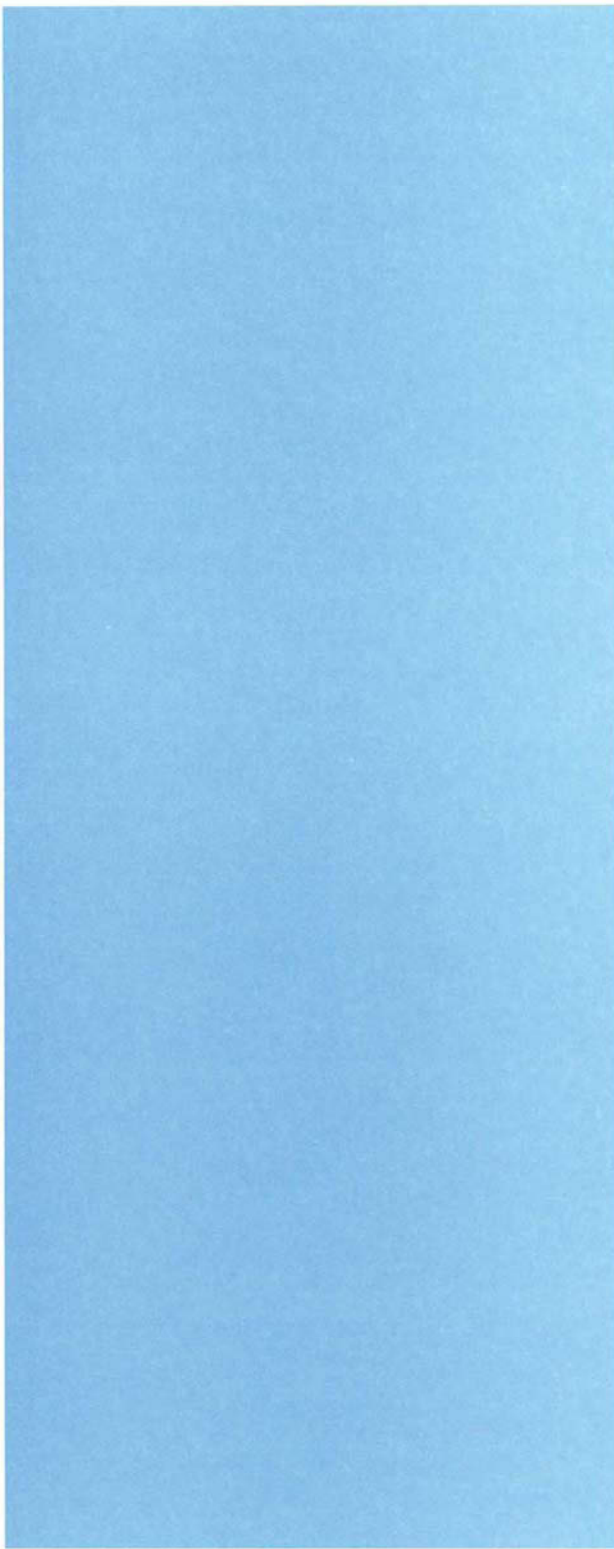
Plates 47 - 50.



## TIME CHART

	<b>Calendar Years</b>
Modern _____	AD 1901
Victorian _____	AD 1837
Post Medieval _____	AD 1500
Medieval _____	AD 1066
Saxon _____	AD 410
Roman _____	AD 43
Iron Age _____	BC/AD 750 BC
Bronze Age: Late -----	1300 BC
Bronze Age: Middle -----	1700 BC
Bronze Age: Early -----	2100 BC
Neolithic: Late .....	3300 BC
Neolithic: Early .....	4300 BC
Mesolithic: Late .....	6000 BC
Mesolithic: Early .....	10000 BC
Palaeolithic: Upper .....	30000 BC
Palaeolithic: Middle .....	70000 BC
Palaeolithic: Lower .....	2,000,000 BC





**TVAS (South)**  
**77a Hollingdean Terrace, Brighton**  
**Sussex, BN1 7HB**

**Tel: 01273 554198**  
**Fax: 01273 564043**  
**Email: [south@tvas.co.uk](mailto:south@tvas.co.uk)**  
**Web: [www.tvas.co.uk](http://www.tvas.co.uk)**