

T H A M E S V A L L E Y

ARCHAEOLOGICAL

S E R V I C E S

**National Westminster Court,
Broad Street, Bristol**

Building Recording

By Genni Elliott

Site Code: BSB20/23

(ST 5879 7318)

**National Westminster Court,
Broad Street, Bristol**

**Building Recording
For Armour Heritage**

by Genni Elliott

Thames Valley Archaeological Services Ltd

Site Code BSB 20/23

**March 2020
Updated October 2020**

Summary

Site name: National Westminster Court, Broad Street, Bristol

Grid reference: ST 5879 7318

Site activity: Building Recording

Date and duration of project: 21st - 25th February 2020, 9th October 2020

Project coordinator: Danielle Milbank

Site code: BSB 20/23

Summary of results: The majority of the historic fabric of the building was removed with the construction of the National Westminster Offices. The frontages of the buildings form the significant bulk of surviving historic fabric with exposed sections of the undercrofts, and likely more present behind modern finishes. Within number 35 Broad Street is a high quality beam with chamfer and stops and probable evidence for the location of a second beam, suggesting a high status building. Within the Everards building much of the front room remains intact.

Location and reference of archive: The archive is presently held at Thames Valley Archaeological Services, Reading and will be deposited with Bristol Museum and Art Gallery in due course.

*This report may be copied for bona fide research or planning purposes without the explicit permission of the copyright holder. All TVAS unpublished fieldwork reports are available on our website:
www.tvas.co.uk/reports/reports.asp.*

Report edited/checked by:	Steve Ford ✓ 23.10.20
	Steve Preston ✓ 23.10.20

National Westminster Court, Broad Street, Bristol Building Recording

by Genni Elliott

Report 20/23

Introduction

This report documents the results of building recording at National Westminster Court, Broad Street, Bristol (ST 5879 7318) (Fig. 1). The work was commissioned by Sue Farr of Armour Heritage, Foghamshire Timber Yard, Foghamshire Lane, Frome BA11 5DG.

Planning permission (18/05132/F) and Listed Building Consent (18/05133/LA) have been granted by Bristol City Council for the conversion of the National Westminster Court buildings into a mixed-use development including a hotel, residential units, commercial space and public realm improvements. This will involve works to the listed buildings and the consents are subject to a condition (numbered 5 and 2 in the respective consents) requiring a programme of building recording. This report documents the results of the building survey. This is in accordance with the Department for Communities and Local Government's *National Planning Policy Framework* (NPPF 2018) and the City's policies on the historic environment. The fieldwork was undertaken by Genni Elliott, Danielle Milbank and Cat Gregori between 21st and 25th February 2020 with a subsequent visit by Nick Dawson on the 9th October 2020 upon exposure of historic fabric of the building. The site code is BSB 20/23.

The archive is presently held at Thames Valley Archaeological Services, Reading and will be deposited with Bristol Museum and Art Gallery and a copy sent to the Historic England Archive in due course.

Location, topography and geology

National Westminster Court is a complex of four buildings situated between Nelson Street, Broad Street and John Street in the old quarter of Bristol City Centre (Fig. 1), broadly located between the A38 to the north-west and a branch of the Bristol Feeder Canal to the south-east (ST 5879 7318) (Fig. 2). St John the Baptist's Church is located immediately to the west of the complex. Spot heights on the surrounding roads show that on Nelson Street the site lies at approximately 9.4m aOD rising to 11m aOD at the north-west end of Broad Street and up to around 13m aOD at the south-eastern end of the complex. The underlying geology is recorded as Redcliffe Sandstone formation (BGS 2004).

Historical Background

The historical background of the site has been covered in a heritage statement (AFA 2018) and an archaeological and heritage background statement (AH 2018). In summary the complex consists of four buildings:

35 Broad Street

Grade II listed and described as

‘Attached house, now office. Possibly late C17, hopper dated 1711, C18 fenestration, early C19 shop front. Possibly timber-framed, render, roof not visible. Double-depth plan. 3 storeys and basement; 3-window range. Jettied first floor, a moulded timber string to the second floor, and timber modillion eaves cornice. Curtailed Pennant steps up to a right-hand doorway with a wide, low 4-panel door and 10-pane overlight. Fine shop front has strips with Greek key between three 20-pane windows, a cornice, and segmental-arched central basement entrance with double doors. Flush, moulded surrounds to 6/6-pane sashes, small on the second floor beneath the eaves. To the right is a good cast lead hopper with a winged cupid, the letters GGI/SI, dated 1711. INTERIOR: largely rebuilt internally mid C20; an ovolo-moulded beam with chamfer stop extends across the front ground-floor and above the recessed doorway. SUBSIDIARY FEATURES: attached wrought-iron barleysugar railings with brass rail to steps.’

36 Broad Street

Grade II listed and described as

‘Formerly known as: No.36 Guildhall Tavern BROAD STREET. Attached house, now office. Early C17, refronted c1825. Brick with limestone dressings, roof not visible. Double-depth plan. 3 storeys; 2-window range. Mid C19 shop front, cornice and parapet. Right-hand 6-panel door, with panelled pilaster strips to the doorway and shop window with small panes, fascia and cornice. 5 stepped voussoirs to 6/6-pane sashes. INTERIOR: largely remodelled mid C20.’

The former Everards Print Works (37-38 Broad Street)

Grade II* listed and described as

‘Printing works, now office. 1900-1, demolished behind c1970. By Henry Williams, facade by WJ Neatby, Chief Designer for Doulton and Co. For Edward Everard, printer. Polychromatic 'Carrara' marble-ware faience. Pre-Raphaelite style. 3 storeys; 4-window range. A symmetrical gabled front has blue plinth to sill level, white above with a thin ground-floor impost band, a wide band over windows, first-floor impost band, crenellated parapet to recessed second-floor windows between octagonal turrets with cupolas, and moulded coping. A wide semicircular-arched doorway has a blocked architrave and hoodmould, flanking elliptical-arched windows, and a band above with coloured stylised trees and hearts. A pair of semicircular-arched first-floor windows with a central octagonal column, square impost and coloured base, EDWARD EVERARD in Art Nouveau lettering above the cills, beneath decorative spandrel panels featuring Gutenberg (L) and Morris (R) at presses with their respective alphabets, and an angel reading in the middle. Behind the parapet is a second-floor arcade of 4 semicircular arches with blocked architraves, brown columns and imposts; the cupolas have similar columns to a frieze of coloured hearts, with brown domes and finials. In the gable is a semicircular-arched panel with an allegorical figure holding a lamp (Light) and scales (Truth). An entrance lobby has a blue plinth, coloured dado, white above to a frieze, and panelled plaster ceiling. INTERIOR: completely rebuilt behind the facade. A timber fire surround and terracotta hopper are mounted in the foyer. Formerly part of a larger printing works by Williams in brown terracotta, of which a further part survives in No.1 John Street (qv). An important early use of glazed coloured external ware to propagate Arts and Crafts ideas of the reconciliation of art and industry, in the largest decorative facade of its kind in Britain.’

The printworks shut in 1967.

National Westminster Court

Office development dating between 1968 and 1974 up to nine storeys high and arranged around three lightwells. The lower two storeys are basement levels taking advantage of the change in ground level to exit onto Nelson Street. This development has removed much of the interior of 35-38 Broad Street.

The earliest available map showing the area in any significant detail is Georg Braun's map of Bristol (1568) or John Speed's map of 1611 which appear remarkably similar and show a representative layout of the main city streets within the city walls with the churches numbered (Fig. 3). The location of the site can be easily approximated due to its location along Broad Street adjacent to St John the Baptist Church. A line of buildings is shown fronting onto Broad Street with open land to the rear. Roque's map of Bristol (1750) shows the area in more detail with Nelson Street, Broad Street as well as St John the Baptist Church and the road immediately to the south-east of it of the complex present. This map does not show any buildings within the site however. Later 18th century maps such as Donne (1786) and Matthew's (1797) show a built-up area between Nelson Street, Tower Lane and St John's Street but do not detail individual buildings. Ashmead's 1855 map (AH 2018, fig. 10) is the first to show the site in detail with the individual buildings/plots indicated. Number 35 is roughly rectangular in shape whilst number 36 is 'L-shaped' having a frontage on Tower Lane as well as Broad Street. Numbers 37-38 comprise a single rectangular plot with an alleyway to the south-east.

Little seems to change on the site over the course of the 19th century. The Bristol town plan of 1884 (AH 2018, fig. 11) indicates a possible change in some of the plot boundaries but this could simply be a case of confusion over a built up area with 35 now extending out towards Tower Lane, 36 being a rectangular plot and labelled *Guildhall Hotel* and 37-38 extending out beyond numbers 35 and 36 and stretching between Tower Lane and John Street. Goad's 1887 Fire Insurance Plan of Bristol (AH 2018, fig. 13) gives more detail with the buildings numbered and their tenants; 35 is recorded as the Mercury Printing Offices with wine cellars under, 36 and 37 as the Guildhall Hotel and 38 as Wathen, Gardner & Co Wholesale Clothiers. This differs from the modern map which labels the Guildhall Hotel as number 36 and the later Everards building as nos 37 and 38.

By the 1903 Ordnance Survey map (AH 2018, fig. 14) Everards print works has been constructed on the plot of 37-38 Broad Street and this appears to remain largely unchanged up to the 1970s and the construction of National Westminster Court.

A number of drawings have been presented in the heritage statement (AFA 2018) suggested to show number 35 Broad Street and number 36 Broad Street as the Guildhall Tavern. There appears to have been some

confusion as to the location of the Guildhall Tavern as it appears to have moved over the years; its original location and that shown in the historic drawing by Hugh O'Neill (1784-1824) shows the Tavern at number 43 Broad Street, incorporating the access to Tailor's Court (Fig. 4).

The drawing of number '35 Broad Street' by Loxton (Fig. 5) shows the premises of the Western Daily Press which according to postal directories was located at 1 Broad Street and whilst the photograph does not match the existing council chambers it would match the adjacent building placing it at the modern number 5 Broad Street. The lack of jetty in the photograph also supports this as 35 Broad Street has always had a jetty.

The only historic drawing showing 35-38 Broad Street (Fig. 6) that has been found principally focuses on St John's Gate but includes the buildings in the surrounding street scene. It was done in 1823 by Loxton and shows only the most general of details, namely three-storey buildings without any oriel windows, it is not detailed enough to show whether a building is jettied or not.

Methodology

The building survey was carried out in accordance with guidelines set out by Historic England for a level 2 record (HE 2016; RCHM(E) 1996). The survey comprised a photographic survey, paying attention to the methods of construction, chronological development and alterations, and features of special interest. The building has been recorded photographically using digital media which is catalogued (Appendix 1). The survey was to pay attention to the parts of the complex pre-dating the 1970s National Westminster building.

Description

The buildings will be discussed separately as far as possible, but some overlap does occur due to the refurbishment of the buildings in the 1970s and stripping out of much of the interior. Elevations of the buildings on Broad Street are shown on Figure 7, whilst plans of the buildings are presented as Figures 8-13. An additional plan showing the external photograph locations is Figure 14. [The numbers on the photograph locations refer to catalogue numbers in Appendix 21; cross references are given from the appendix to the plates.]

35 Broad Street

35 Broad Street (Pl.1) is located at the north-west end of the row, closest to St John the Baptist Church. It is a three-storey building with a cellar. The frontage presents as a black and white building; black woodwork with white render to the walls. The first floor has a small jetty and the roof has been replaced with a modern flat roof.

At ground level is a small pair of plank doors with a segmental arch shaped top giving access to the cellar (Pl. 2). The area of the steps/slide within the pavement has been concreted over. Above this, at ground floor level is a large tri-partite window with the door located at the south-east end of the building (Pl. 3). The door is located up four steps and consists of a large four-panel replica door with a central, vertical letterbox (Pl. 4). The rear of the door is a plain wooden board also painted black. Above the doorway are 10 small window lights. On either side of the steps is a short section of wrought iron rail with three barley sugar balusters. The central baluster also has additional wrought iron-work to form small panel with scroll decoration at the top and bottom. The rail above is brass (Pl. 3). The windows are sub-divided by a set of pilasters with reeding and a circular motif at the top. The windows were visible internally and consist of a central sash window of eight-over-twelve panes with a fixed 20 pane window on either side (Pl. 5).

The first floor is jettied (Pl. 6) and contains three six-over-six sash windows set within a moulded surround with plinth blocks at the base. Dividing the first and second floors is a simple moulded string course with extended hoods over the windows. The windows are sash windows, six-over-six panes with no horns (Pl. 7) On the second floor are a further three smaller windows, directly above those below, with the appearance of six-over-six sash windows but in fact top-opening casement windows (Pl. 8).

The underside of the roof has a timber modillion eaves cornice (Pl. 6). Down either side of the building is a rain water downpipe; that to the north-west is circular with a plain hopper while that to the south-east has a square profile with an ornate hopper and wall attachment (Pl. 9). The hopper records the letters G/GE / SI and is dated 1711. A winged cupid supports the hopper which appears to be brass with a brass bulls eye above and a heart (or shell?) shape on the wall attachment.

Internal

In general the building has been thoroughly modernized with plastered walls, modern flooring and new ceilings constructed of concrete waffle blocks with a suspended ceiling beneath. Internal divisions are largely modern with the division between numbers 35 and 36 Broad Street largely removed to create one integrated space.

Undercroft

The undercroft of the building consists of a single room with a vaulted ceiling (Pl. 10). Access is from the undercroft beneath number 36 into the centre of the room. At the south-west (front) end of the room is a modern door/panel blocking the street level entrance (Pl. 10). The original north-east (rear) wall has been removed in order to create access to the National Westminster Court block (Pl. 11). Construction of the undercroft is

complex being a single-arched vault wide and two arches long (Pl. 12). The entire thing is constructed of stone, painted white. The majority is roughly coursed rubble, but beneath the springer quoins are present (Pl. 13). The stone can not be identified with any certainty beneath the paint but the general appearance is similar to that in the walls of St John the Baptist Church which has been identified as Brandon Grit. The floor is modern.

Ground Floor

The front door leads to a small entrance lobby which contained a further set of steps up to a modern, internal door (Pl. 14). Within the ceiling is the south-east end of a wooden beam extending into the staggered wall at the south-east end and continuing through the modern partition wall to the north-west. The beam extends the width of the original building. It has ovolo moulded chamfer with stop ends. A rectangular panel has been created on the underside which has been largely removed at the north-west end but remains intact at the south-east end (Pls 15 and 16).

The lobby leads onto a stair lobby containing a modern set of stairs to the upper floors, technically within the original footprint of number 36. A subsequent central circulation space gives access to the individual rooms within the two buildings. To the north-west is the main room within number 35 with the three windows onto Broad Street (Pl. 5). The beam continued into this room in which could also be seen where the floor joists had been cut and left in the mortices (Pls 17 and 18). To the rear of the room is access to a smaller room in the north corner of the original building. Where ceiling panels had been removed it was possible to see a hole in the north-west wall which was approximately the same size as the beam to the south-west (Pl. 19). The wall in this location was of brick construction, and this may well be of later construction, built around the earlier beam.

To the rear of the building are four windows contained within three rooms; all the rooms and windows are modern (Pl. 20).

First Floor

The dog-legged staircase (Pl. 21) rises up through the centre of the building, at the half landing level is a set of modern toilets. At the first-floor level the small lobby area gives access to number 35 Broad Street to the north-west, and number 36 Broad Street to the south-east. The room within the footprint of no. 35 extends the full length of the building with three windows overlooking Broad Street (Pl. 22). The room is 'L-shaped' at the rear with three windows across the back extending into the plot of number 36 (Pl. 23). A small corner of earlier wall remains towards the south-west end of the room according to the plans, although it looks no different to any other wall.

Second Floor

The staircase continues up with a further set of modern toilets at the half landing level. The second floor is similarly knocked together with number 36. The stairs give access to a small lobby area which in turn gives access to a room within the footprint of number 35 with three windows across the frontage (Pl. 24). As on the first floor a small section of the original wall is left standing between numbers 35 and 36 (Pl. 25). A second room extends across the entire back of numbers 35 and 36 and contains three modern windows (Pl. 26).

Roof

The roof has been replaced with a modern flat roof (Pl. 27). Rising above the height of the roof at the north-west end is the brick dividing wall between numbers 34 and 35 Broad Street capped with what appears to be concrete slabs. This wall returns along the Broad Street frontage and forms the wall to number 34.

36 Broad Street

36 Broad Street is located to the south-east of number 35 (Pl. 28). It is also a three-storey building with a cellar. The frontage consists of a shop front at ground floor level with a brick façade above painted white. The bricks are laid in stretcher bond. The roof has been replaced with a modern flat roof, obscured by the parapet.

The ground level rises up to the south-east and a plinth is present along the base of the building to level the building against the natural slope (Pl. 29). At the south-east end, where the door is located, it is no longer present and a set of two steps gives access to the front door (Pl. 30). The door consists of a large, six-panel door with a central letter box. A modern window light is set above. To the north-west is a large window, visible internally and seen to consist of twelve over five window panes in a wooden frame (Pl. 31). Beneath the window are four, almost square, panels and either side is a pilaster with a plinth block at the base and three rectangular panels above it. A further pilaster is present to the south-east of the door.

Dividing the ground and first floors is a moulded timber string course with decorative dentillations beneath (Pl. 32). The first and second floors are identical consisting of a pair of sash windows, with horns, set back and recessed into the brickwork (Pl. 33). The sash windows are all six-over-six windows above which are five stepped voussoirs. The top of the building has a parapet separated from the second floor by a cornice.

Internal

Similarly to number 35 Broad Street, internally the building has been thoroughly modernized with plastered walls, modern flooring and suspended ceilings beneath concrete waffle blocks. The upper floors have had all original partitions removed to create a single functional space with number 35.

Undercroft

The undercroft beneath this building has been thoroughly modernized with alterations made to both the south-west and north-east ends (Pls 34 and 35). It is likely that the majority of the alterations have consisted of stud walling to create flat walls and a flat ceiling and that beneath the modern plasterboard is the original vaulted ceiling and stone walls. A dividing wall has been inserted at the south-west end to accommodate a spiral staircase down from the ground floor into a narrow corridor which gives access to both the undercroft below number 36 and that below Everards. Within this passageway the brick walls are exposed with the bricks laid in stretcher bond and measuring 230mm x 62mm (Pl. 36).

Ground Floor

The ground floor has been divided into two parts; the front of the building giving access to the cellars and the rear of the building that has been incorporated into number 35. The front entrance gives access to a small entrance lobby (Pl. 37), to the rear is a small cupboard whilst to the north-west is access to the front room with its large window overlooking Broad Street. The room is thoroughly modernized and acts as access to the spiral staircase down to the cellar area (Pl. 38).

The rear section of the building is accessed through number 35 and consists of modern divisions of the space including stairs to the upper floors, circulation space and parts of two rooms. To the rear are two modern windows (Pl. 39).

First Floor

At the mezzanine level is a set of modern toilets. The first-floor level proper has been at least partially combined with number 35 to create a single space, similar to the ground floor. The front room retains the former width of the building and has two sash windows overlooking Broad Street (Pl. 40). Otherwise the office has been modernized. The rear of the building forms part of the single room within number 35 and a smaller room in the north-east corner (Pl. 41). Within the former plot of this building are two modern windows.

Second Floor

Once again the mezzanine level has a set of modern toilets. The second floor proper is similar to the first floor with the front office running the width of the earlier building plot and having two sash windows overlooking Broad Street (Pl. 42). To the rear of this is a small internal cupboard. Located behind the stairs is a modern office space running the width of numbers 35 and 36 with four modern windows within the rear wall (Pl.26).

Roof

The roof has been replaced with a modern flat roof (Pl. 43). The parapet remains along the Broad Street frontage and a small section of the dividing wall between numbers 35 and 36. This has been whitewashed over and covered in what appears to be concrete slabs.

Everards Print Works

The Everards building is a three-storey building with a cellar, set back from the main street frontage (Pl. 44). The frontage is ornate, designed in the Pre-Raphaelite style and covered in Carrera marble. The ground floor consists of a central entrance archway with a wooden casement window on either side beneath a three-centred arch (Pl. 45). Beneath the windows the marble is blue whilst it is white to the top of the arches. The entrance is accessed up a short flight of steps (Pl. 46) with a short section of handrail either side (square profile iron balusters with a brass handrail). Marking the entrance to the building is a pair of cast iron gates in black with a central spade design (Pl. 47). Placed centrally within each spade is the letter 'E' in a copper colour on an ornate green background. These gates give access to a large covered porch area where a subsequent short flight of steps gives access to the building proper.

A band above the height of the windows has a pattern of stylized trees (green triangles) interspaced with red hearts on a blue background (Pl. 45). The first floor (Pl. 48) consists of a pair of semi-circular arched windows beneath a crenellated parapet. They are divided by a central octagonal column coloured green and blue at its base. Within the recessed window arches are the words Edward and Everard in white on a blue background (Pls 49 and 50). The windows themselves are the same style wooden casements as the ground floor. At the height of the springer the marble is carved with what appear to be stylized square trees (Pl. 51).

The area surrounding the windows is decorated in two parts; to the north-west is Gutenberg in the 15th century with his alphabet and printing press (Pl. 52) whilst to the southeast is Morris in the 19th century with his alphabet and printing press (Pl. 53). These are divided (and linked) by a central winged angel spreading out over the two windows.

The second floor (Pl. 48) is set back behind the parapet and consists of four windows with semi-circular arches between two octagonal turrets and cupolas. The windows are divided by octagonal columns copper columns. The cupolas (Pl. 49) have a frieze of red and blue hearts on a green background with brown domes and finials. The gable end is set within a semi-circular panel, with the appearance of sunrays extending outwards and contains a figure holding a lamp and scales representative of light and truth (Pl. 50).

Internal

Much of the internal elements of the building have been modernized and the interiors gutted. Some aspects of the ground floor do however remain. The walls are generally plastered and painted white with a modern suspended ceiling. Where visible the original floors appear to be wooden.

Undercroft

The undercroft would have been similar to that beneath number 35 though it has been largely modernized (Pls 56 and 57). Access is twofold, via an opening between the vaults of number 36 and Everards or from the corridor at the south-west end linking to the spiral staircase within number 36. The doorway is modern. The original arched vault at the rear is still present, constructed of roughly coursed rubble, likely the same stone as that within number 35, tentatively identified as Brandon Grit. The supporting walls to the arches are roughly coursed rubble with chamfered quoins on the edges and a pronounced springer differentiating it from number 35 (Pl. 58). The ceiling itself has been removed and replaced with a flat ceiling and the arch finished with bricks along the edges. The arch towards the front of the undercroft appear to have been removed, though traces may remain where the ceiling height is lower. The walls have all been plastered over and it is possible that some of the earlier walls may survive behind the modern material. Within the modern, rear wall is a window onto a corridor. The floor is modern and within the south-east wall are modern entrances to the cellars beneath the rest of the building.

Ground Floor

The ground floor of Everards is the most intact of the building. The original plan shows a room at the front with a central external porch. In the east corner is a fireplace and in the north corner is a small flight of stairs giving access through a door in the north-east wall to the staircase proper. Beyond the front room is a central opening into a short section of corridor, to the north-west of which appears to be a cupboard under the stairs, and to the south-east a toilet and lightwell. A pair of doors opens out onto a larger room. The front room survives largely intact, though on the day of the survey many of the original features had been covered over.

The covered porch area is a continuation of the decoration from the front façade; the blue plinth continues inside, above which is a border of white, red/green and brown tiles above which are square white tiles in Carrera marble (Pl. 59). Towards the ceiling is a frieze of coloured tiles arranged in chevrons (Pl. 60). The ceiling itself is laid out in four x four rectangular panels, painted white with a central light fitting (Pl. 61). Within the north-west and south-east walls is a wooden door with two windows giving access to the main room (Pl. 59). The door has a decorative lower panel with interlacing raised strips creating a cross decoration. The main entrance to the room is via a set of modern glass doors in the north-east wall. The main lobby room contains a number of

original features; the skirting board with moulded top and dado rail, both in a brown colour (Pl. 62). Around the ceiling is the moulded coving with swagged decoration, it has been partially obscured by the inserted suspended ceiling (Pl. 63). Along the north-east wall is a central arch into the next room with a set of steps leading up, a short flight of stairs to the north-west with ornate panelling beneath and a turned newel post and balusters (Pl. 64). At the top of the stairs is a four-panel Victorian-style door beneath a semi-circular internal window. To the south-east of the arch is a corner fireplace that was completely obscured on the day of the survey. Earlier available pictures (AFA 2018) show it to be blocked up, with a decorative frontage of a pair of dragons above which is a decorative panel on the wall with 'Edward Everard Printer' on a plaque held by two female figures.

The room beyond the entrance lobby is a large open space dating to the 1970s phase of construction. However, above the archway the brickwork forming the rear wall of the lobby could be seen to be laid in English bond (Pl. 65).

First Floor

The first-floor plan of Everards shows two rooms to the front, two sets of staircases internally along the northwest wall, a small bathroom and lightwell along the southeast wall and a room to the rear. Within each of the front rooms is a fireplace. What remains consists of four rooms off of a central corridor. Access to the rooms is via an inserted door in the south-east wall through part of the former front office creating an 'L-shaped' corridor (Pl. 66). A single room is present across the front of the building with a blocked fireplace in the north-west wall (Pls 67 and 68). The two rooms to the rear have been entirely modernized and it is possible to see where the wall is damp that it is modern and of concrete block construction containing three modern windows (Pl. 69). The internal room is entirely modern in construction. Within the corridor area it is possible to see the remains of the blocked fireplace in the south-east wall adjacent to the new entrance (Pl. 66).

Second Floor

The second-floor plan of Everards shows three rooms arranged around a lightwell with the stairs coming up within the front room on the north-west wall. A fireplace is present on both the north-west and south-east walls of the front room. What remains consists of a single room across the front of the building; in the north-west wall is a blocked fireplace whilst none remains in the south-east wall (Pls 70 and 71). Where there was once a light well is now a corridor giving access to the room at the rear of the building (Pl. 72). The back wall has been altered to form a continuous back wall with numbers 35 and 36 and this is evidenced by the concrete block gable (Pl. 73) end as opposed to the brick gable (Pl. 74) at the front of the building.

Roof

The roof of the Everards building is still present and consists of a gable end roof covered in pan tiles set behind a higher, more ornate frontage to the gable roof proper (Pl. 75). Internally the roof appeared to be of common rafter construction with a raised collar and central post to support the ridge plank (Pl. 76). All rafters were laid on edge and where it could be seen the timbers appeared to be of pine suggesting the roof is consistent with the construction of the Everards building rather than an earlier survival.

National Westminster Court

The conversion of the building to an office block has removed much of the historic fabric of the earlier buildings. The office block is constructed of structural concrete columns and beams creating large open spaces. The floors are concrete and the ceilings are predominantly concrete waffles, typical of the era. Where parts of the building are more intact these have been covered over with a suspended ceiling. Where accessible, the upper floors were virtually identical with variations on the lower floors. In summary the lowest basement level had vehicular access to Nelson Street and was a carpark with associated infrastructure of lifts and stairwells (Pl. 77), the upper basement level was predominantly taken up by a canteen and kitchen (Pl. 78). The ground floor was less accessible on the day of the survey due to demolition works but a large window typical of the era was present overlooking a lightwell (Pl. 79). The upper floors had been largely demolished and all that remained were the external walls and structural columns (Pl. 80).

Renovation

During renovation works previously obscured parts of the structure of the building were revealed and a subsequent site visit was made on the 9th October to record this fabric. This newly revealed fabric consisted of a stone wall between numbers 36 and the Everards building (37-38) observed within number 36 Broad Street and internal decoration within the Everards building on the first and second floors.

36 Broad Street

Removal of the plaster on the southeast wall between number 36 Broad Street and the Everards building revealed a substantial stone wall, rising up through the building including the entirety of the visible second floor (Pl. 81). In general, the wall is of a similar construction to that which was seen within the undercroft level of number 35 (obscured within number 36 and Everards by modern plasterwork). This consisted of roughly coursed stone of various sizes with colours predominantly consisting of paler and darker greys and buff yellows which does

appear to be similar to the Brandon Grit of St John the Baptist Church to the northwest and sourced from the local Brandon Hill.

The wall was recorded in a series of steps according to the existing levels within the building; ground floor and its mezzanine, first floor and its mezzanine and second floor.

Ground Floor (Fig. 15)

The ground floor section was typical of the wall in general, of note was the red mortar bonding the stones together (Pl. 82). In places the wall had been patched with bricks. At the southwest end of the wall, beneath the mezzanine level a former opening is present through to 37 Broad Street, characterised by quoins down the southwest side and a rough joint on the northeast side (Pl. 83). The quoins consist of various sized blocks in a white stone, perhaps a limestone and appear to be similar in style to those in the undercroft of 35 Broad Street, though the stone there has been whitewashed over. The opening has been infilled with similar, roughly coursed Brandon Grit stone. The top of the doorway was present on the mezzanine level, though the quoins look to have been removed. It consisted solely of the infilled opening with no structural remains of the top of the doorway present. The infilled opening could be seen to be flat along the top, though a former arch could have been previously removed.

First Floor (Fig. 16)

At first floor level the wall is roughly coursed of generally smaller stones in a red mortar. Above the ground floor opening is a second opening at this level, infilled with brick laid in English bond. This opening also spans the mezzanine level with the top of the doorway present above. No quoins are present within this opening but it does retain an indication of its arched head (Pl. 84). At the base of the opening appears to be a section of the original stone step consisting of a single length of stone spanning the width of the opening (Pl. 85).

Second Floor (Fig. 17)

The second-floor wall is once again of the same construction consisting of roughly coursed stones of varying sizes. The northwest end of the wall is lower than that to the southeast and has been infilled with brickwork. The reason for this lower section is not clear, but the section has a horizontal base and a vertical joint with the earlier stonework (Pl. 86).

Everards Print Works

First Floor (Fig. 16)

Stripping out of the modern plaster work within the first floor of the Everards building along with the false ceiling and internal walls revealed parts of the earlier building beneath. Within the northwest wall the chimney stack was revealed (Pl. 87). The fireplace and surround had been removed revealing part of the brickwork to the chimney breast; the opening had also been bricked up. The upper part of the chimney breast and an exposed section of wall to the northeast retained sections of earlier wall paper. Earlier wallpaper and wall detail were also present on the southeast wall, though less of this wall had been exposed (Pl. 88). It was clear the wall had been split into three sections by a dado rail and a picture rail. The lowest section of wall paper consisted of anaglypta type with a vertical repeating pattern topped with a spade type design and finished in a pale colour, probably cream though the colour may have altered over the intervening years (Pl. 89). It is possible that this is the original wallpaper as compared to photographs taken when the building was still in use as a printworks. It is not identical to that shown from photographs of the southeast wall but is strikingly similar in style and pattern. A tiny section of paper was visible on the southeast wall and appears to be very similar to that on the northwest wall and therefore may well be original (Pl. 90). Between the dado rail and picture rail was vertical striped wall paper, which according to contemporary photographs is a later addition. This was also present on the southeast wall. Short sections of the picture rail survive on the chimney breast and immediately to the southwest as a traditional moulded rail (Pl. 91). Wall paper above the rail appears to be plain; once again different from that seen in contemporary photographs. The join between the wall and former ceiling was separated by ornate coving. This survived on the northwest and southeast walls as well as on the southwest side where the ceiling height raised beyond the window area (Pl. 92). The section along the northeast had been removed along with the original wall, though the location of this could be seen where the plaster finished and the brick wall was exposed.

Where the chimney breast is present in the northwest wall the remains of the hearth is still present within the floor consisting of rectangular, reddey brown tiles (Pl. 93) whilst in the southeast wall the remains of the hearth consists of small, square dark green tiles (Pl. 94). The corners of the chimney stacks have been softened with a rounded edge. Within the centre of the chimney breast are a pair of slightly projecting ends of wood with exposed brick beneath (Pl. 95). Earlier pictures suggest that this may be the location of a picture on the wall. Similar fittings were apparent along the line of the dado rail and picture rail, but rotated 90°. Identical fittings were also present, at the same height as those within the chimney breast, located to the northeast and beneath them was a further set. The off-centre location between chimney breast and wall end within the created alcove

and that there are four in a vertical line would suggest a function for something other than a picture in this instance, though no function is apparent in the available earlier pictures.

The upper section of the room to the northeast, along the northwest wall was painted dark green with no evidence for a picture rail (Pl. 96).

No evidence was seen for a dividing wall between the two windows facing onto Broad Street, though modern plaster had not been removed in this area and the coving had been destroyed in this area. The offset chimneys and the apparent difference in northeast wall location would however suggest that the room was either divided or the rear wall staggered (Pl. 87 vs. 88).

Second Floor (Fig. 17)

Less of the second floor had been exposed, though the ceiling had been entirely removed revealing further details of the roof space and construction (Pl. 98). Along the rear wall (northeast wall) a small section of wall paper was revealed beneath the windows. At the northwest end this consisted of a floral design (perhaps roses or carnations) arranged in a bunch and encircled with further decoration which then appears to have been arranged in a vertical pattern. Between the repeating vertical pattern are further floral garlands (Pl. 99). At the southeast end the wallpaper varied consisting of a more stylised floral and leaf pattern in gold, perhaps typical of the 1960's/1970's (Pl. 100).

Removal of the ceiling suggests that the original ceiling was located beneath the raised collar creating a partially sloped ceiling within the room. At least one of the trusses was painted white to this height (Pl. 101). The gable end along the Broad Street (southwest) frontage was painted yellow up to the height of the truss and it could be seen that beneath it was lath and plaster construction (Pl. 102). Above the plaster the brickwork is exposed to the apex of the gable. The northeast gable end has been rebuilt at the apex, above the height of the trusses in concrete blocks (Pl. 103). From the original plans it is possible to see that this wall is of later construction with the original roof being longer than it now is.

Roof

Roof construction consisted of common rafters resting on a wooden wall plate (Pl. 101). Within the roof were two trusses with a raised collar supporting the purlin. The location of the purlin was staggered between the roof trusses and it is possible to see that the northeast truss is not in its original position, having been moved to the southwest leaving the purlin to overhang and exposing a lap joint (Pl. 104). The original truss has been painted

white up to and including the collar and appears to be the same construction as the later one (Pl. 101). In addition to the woodwork it is further strengthened by iron rods, consisting of a vertical rod between the steel? Fishplate holding the apex of the principal rafters and the raised collar and tie rods between the underside of the principal rafter and centre of the raised collar (Pl. 105). Above the trusses is a ridge plank where the common rafters meet. It is not clear what the older wood is but the newer wood appears to be pine and includes the new truss and additional common rafters.

Conclusion

Much of the original fabric of the three buildings of interest (35 and 36 Broad Street and Everards) appears to have been removed when the building was converted to the National Westminster offices. The main surviving aspects are the frontages of the buildings, parts of the undercrofts, though more is likely to survive behind the modern plaster-board, a decorated beam in number 35 and the lobby room of Everards. No evidence for the original layouts of the buildings survives nor any other dating evidence for numbers 35 and 36 Broad Street. The quality and workmanship of the beam within number 35 suggests that it would have been a high-status building, possibly slightly earlier than the 1711 date on the hopper. Nothing is known of number 36 prior to its being refronted in its current style. A subsequent visit to number 36 to view the newly exposed stone wall between numbers 36 and Everards indicates that the building was two-stories in height with significant openings at ground floor and first floor levels into the former building to the southeast. Within the Everards building, particularly at first floor level some original features could be seen – coving, picture rail, the location of the dado rail and possibly some original wall paper. Fittings are apparent within the walls; some clearly relate to the dado rail and picture rail. The two within the centre of the northwest chimney breast may relate to a picture location but the function of those located to the northeast and form a vertical line is unclear.

References

- AFA, 2018, Everard Printing Works, 35-38 Broad Street, Nat West Court, Bristol, Heritage Statement, Alec French Architects, Bristol
- AH, 2018, Former Everard Print Works (Nat West Court) Bristol, Archaeological and Heritage Background Statement, Armour Heritage, Frome
- BGS, 2004, *British Geological Survey*, 1:50,000, Sheet 264, Solid and Drift Edition, Keyworth
- HE, 2016, *Understanding Historic Buildings: A guide to good recording practice*, Historic England, Swindon
- NPPF, 2018, *National Planning Policy Framework*, Ministry of Housing, Communities and Local Govt, London
- RCHME, 1996, *Recording Historic Buildings: a descriptive specification*, 3rd edn, Roy Comm Hist Monuments (England), London

APPENDIX 1: Photographic Catalogue

<i>Cat. No.</i>	<i>Scales</i>	<i>Location</i>	<i>Direction</i>	<i>Description</i>
1	-	LG2	NNW	View of carpark towards Nelson Street [PI. 77]
2	-	LG2	NW	General view of carpark
3	-	LG2	NE	General view of carpark
4	-	LG2	ENE	General view of carpark
5	2x1m	LG1	SW	View to blocked door [PI. 10]
6	2x1m	LG1	WSW	Oblique view of blocked door and arch
7	2x1m	LG1	SE	Oblique view of blocked door and arch
8	2x1m	LG1	SE	View of arch
9	2x1m	LG1	WNW	View of arch
10	2x1m	LG1	WNW	Pier detail [PI. 13]
11	2x1m	LG1	NE	View to rear of undercroft [PI. 11]
12	2x1m	LG1	SE	View to 36 Broad Street through arch [PI. 12]
13	2x1m	LG1	NE	View to rear of cellar [PI. 34]
14	2x1m	LG1	NW	View to 35 Broad Street through arch
15	2x1m	LG1	SE	View to spiral stair location [PI. 35]
16	2x1m	LG1	NE	View to rear of undercroft [PI. 57]
17	2x1m	LG1	SE	Arch detail
18	2x1m	LG1	NW	Pier detail and brickwork in arch [PI. 58]
19	2x1m	LG1	SW	View to modernised front of undercroft [PI. 56]
20	2x1m	LG1	W	View along corridor [PI. 36]
21	2x1m	LG1	SE	View along corridor
22	2x1m	LG1	N	Bottom of spiral staircase
23	2x1m	LG1	SW	General view of Nat West cellar
24	2x1m	LG1	NE	General view of Nat West cellar
25	-	LG1	NW	General view of Nat West cellar
26	2x1m	LG1	NW	View to lift corridor
27	-	LG1	SW	General view of office space
28	2x1m	LG1	SE	View along corridor
29	2x1m	LG1	SW	View of canteen [PI. 78]
30	2x1m	LG1	SSW	View to windows
31	2x1m	LG1	NE	View to windows
32	2x1m	LG1	SE	View to kitchen/canteen area
33	2x1m	LG1	NE	View to former eating area
34	-	GF	SE	General view to windows
35	2x1m	GF	NW	View of window [PI. 79]
36	2x1m	GF	SSE	View to window (Everards) [PI. 62]
37	2x1m	GF	WNW	Oblique of door (Everards)
38	2x1m	GF	NNE	View to arch (Everards)
39	2x1m	GF	NW	Stair detail, oblique (Everards) [PI. 64]
40	2x1m	GF	W	Stair and door detail (Everards)
41	-	GF	SW	View to window (Everards)
42	-	GF	NE	Coving Detail (Everards) [PI. 63]
43	2x1m	GF	SW	Gate detail (Everards) [PI. 47]
44	2x1m	GF	SW	Gate detail (Everards)
45	-	GF	SW	Frieze detail above arch (Everards) [PI. 60]
46	-	GF	SW	Ceiling detail (Everards) [PI. 61]
47	2x1m	GF	SE	Door detail (Everards) [PI. 59]
47(2)	2x1m	GF	SE	Door detail (Everards)
48	-	GF	SE	Frieze detail (Everards)
49	-	GF	SE	Brickwork above arch (Everards) [PI. 65]
49(2)	-	GF	SE	Brickwork above arch (Everards)
50	-	GF	NW	Spiral stair detail [PI. 38]
51	-	GF	E	View to doors [PI. 37]
52	-	GF	WSW	View to windows [PI. 31]
53	-	Roof	SE	View across rooftops
54	-	Roof	SW	Everards roof [PI. 75]
54 (2)	-	Roof	SW	Everards roof
55	-	Roof	SW	Rear wall of Everards
56	-	Roof	S	Rear wall of 56 Broad St.
57	-	Roof	S	36 Broad St roof [PI. 43]
57 (2)	-	Roof	S	35 Broad St roof [PI. 27]
58	-	Roof	S	Lightwell
59	2 x 1m	External	NE	Everards steps [PI. 46]
60	2 x 1m	External	NE	Everards steps
61	2 x 1m	External	ENE	Everards frontage, oblique
62	2 x 1m	External	NW	Everards frontage, oblique

<i>Cat. No.</i>	<i>Scales</i>	<i>Location</i>	<i>Direction</i>	<i>Description</i>
62 (2)	2 x 1m	External	NW	Everards frontage, oblique
63	2 x 1m	External	NE	Everards window detail
63 (2)	2 x 1m	External	NE	Everards window detail [PI. 45]
64	2 x 1m	External	NW	Oblique 36 Broad St. [PI. 28]
65	-	External	NW	Oblique 36 Broad St.
66	2 x 1m	External	NE	Door, 36 Broad St. [PI. 30]
66 (2)	2 x 1m	External	NE	Door, 36 Broad St.
67	2 x 1m	External	E	Oblique 36 Broad St.
67 (2)	2 x 1m	External	E	Oblique 36 Broad St. [PI. 29]
68	2 x 1m	External	NE	Oblique 35 Broad St. [PI. 3]
69	2 x 1m	External	NE	Undercroft entrance, 35 Broad St. [PI. 2]
69 (2)	2 x 1m	External	NE	Undercroft entrance, 35 Broad St.
70	-	External	NE	35 Broad St. looking up
71	2x1m	External	E	Door, 35 Broad St. [PI. 4]
72	-	External	NNW	40 Broad St.
72 (2)	-	External	NNW	40 Broad St.
72 (3)	-	External	NNW	40 Broad St.
73	-	External	NNW	Everards frontage
74	-	External	NE	Everards frontage [PI. 48]
74 (2)	-	External	NE	Everards frontage
75	-	External	NE	Everards roof apex
76	-	External	NE	36 Broad St frontage [PI. 32]
76 (2)	-	External	NE	36 Broad St frontage
77	-	External	NE	35 Broad St frontage [PI. 6]
78	-	External	E	Oblique 35 and 36 Broad St. [PI. 1]
78 (2)	-	External	E	Oblique 35 and 36 Broad St.
79	2 x 1m	SF	SW	View to windows [PI. 24]
80	2 x 1m	SF	ESE	General view [PI. 25]
81	2 x 1m	SF	SW	Window detail [PI. 8]
82	2 x 1m	SF	NE	General view
83	2 x 1m	SF	SW	Window detail [PI. 33]
83 (2)	2 x 1m	SF	SW	Window detail
84	2 x 1m	SF	SE	General view [PI. 42]
85	2 x 1m	SF	SE	General view
86	2 x 1m	SF	NW	General view [PI. 26]
87	2 x 1m	SF	SE	General view
88	2 x 1m	SF	SE	Stairwell [PI. 21]
89	2 x 1m	FF	NE	General view [PI. 41]
90	2 x 1m	FF	NE	View to windows [PI. 23]
91	2 x 1m	FF	SW	View to windows [PI. 22]
92	2 x 1m	FF	SW	Window detail [PI. 7]
92 (2)	2 x 1m	FF	SW	Window detail
93	-	FF	S	General view [PI. 40]
94	2 x 1m	FF	SW	Window detail
95	2 x 1m	GF	SW	View to windows [PI. 5]
95 (2)	2 x 1m	GF	SW	View to windows
96	-	GF	SW	Beam detail
97	-	GF	SW	Beam detail
98	-	GF	SW	Beam detail
99	-	GF	SW	Beam detail
100	-	GF	NE	Beam detail
101	-	GF	NE	Beam detail
102	-	GF	NE	Beam detail [PI. 17]
103	-	GF	NE	Beam detail
104	-	GF	N	Beam detail
105	2 x 1m	GF	NE	General view
106	-	GF	NW	Hole in wall [PI. 19]
107	2 x 1m	GF	SW	Foyer
108	2 x 1m	GF	NE	General view [PI. 20]
109	2 x 1m	GF	ESE	Corridor
110	2 x 1m	GF	E	General view
111	2 x 1m	GF	NE	General view [PI. 39]
112	2 x 1m	GF	NW	Entrance lobby [PI. 14]
113	-	GF	NE	General view
114	2 x 1m	GF	SW	General view
115	2 x 1m	FF	N	General view
115 (2)	2 x 1m	FF	N	General view
117	2 x 1m	FF	SW	General view
118	2 x 1m	SF	N	General view [PI. 80]

<i>Cat. No.</i>	<i>Scales</i>	<i>Location</i>	<i>Direction</i>	<i>Description</i>
119	2 x 1m	SF	SW	General view
120	2 x 1m	TF	N	General view
121	2 x 1m	TF	NW	General view
122	2 x 1m	SF	WSW	View to windows and blocked chimney [PI. 70]
123	2 x 1m	SF	E	General view [PI. 71]
124	2 x 1m	SF	SW	View to windows
125	2 x 1m	SF	SW	View to windows
125 (2)	2 x 1m	SF	SW	View to windows
126	-	SF	SW	View to gable end [PI. 74]
127	-	SF	SE	Roof detail [PI. 76]
128	2 x 1m	SF	NE	View along corridor [PI. 72]
129	2 x 1m	SF	W	General view
130	2 x 1m	SF	NE	View to windows
131	-	SF	NE	Gable end [PI. 73]
132	2 x 1m	SF	SW	Stair detail
133	2 x 1m	SF	SW	General view
134	2 x 1m	FF	WNW	Entrance to stairwell
135	2 x 1m	FF	W	View to windows [PI. 67]
136	2 x 1m	FF	SSW	Window detail
137	2 x 1m	FF	SSW	Window detail
138	2 x 1m	FF	E	General view [PI. 68]
139	2 x 1m	FF	ENE	General view
140	2 x 1m	FF	NW	General view
141	2 x 1m	FF	E	General view to windows [PI. 69]
141 (2)	2 x 1m	FF	E	General view to windows
142	2 x 1m	FF	WNW	General view
143	2 x 1m	FF	SW	General view [PI. 66]
144	2 x 1m	GF	NE	General view
144 (2)	2 x 1m	GF	NE	General view
145	-	External	NE	Tower Lane
145 (2)	-	External	NE	Tower Lane
146	-	External	NE	John Street
146 (2)	-	External	NE	John Street
147	-	External	NW	1 John Street, oblique
148	-	External	NW	Nat West building
149	-	External	SW	Nat West building
150	-	External	NE	Edward window [PI. 49]
151	-	External	NE	Everard window [PI. 50]
152	-	External	NE	Morris detail [PI. 53]
153	-	External	NE	Gutenberg detail [PI. 52]
154	-	External	NE	Apex detail [PI. 55]
155	-	External	NE	Cupola detail [PI. 54]
156	-	External	NE	Cupola detail
157	-	External	NE	Apex detail
158	-	External	NE	Springer detail [PI. 51]
159	-	External	NE	Pillar detail
160	-	External	NE	Hopper detail
161	-	External	NE	Hopper detail [PI. 9]
162	-	GF	NW	Beam detail
163	-	GF	NE	Beam detail [PI. 18]
164	-	GF	NE	Beam detail
165	-	GF	UP	Beam detail [PI. 16]
166	-	GF	SE	Beam detail
167	-	GF	SE	Beam detail [PI. 15]
168	1m	GF	SE	General view of wall
169	1m	GF	SE	General view of wall
170	1m x 20cm	GF	SE	Ashlar stone corner detail [PI. 83]
171	1m	GF	SE	Wall detail
172	20cm	GF	SE	Wall detail [PI. 82]
173	20cm	GF	SE	Wall detail
174	1m	GF/FF	SE	General view of wall
175	-	GF/FF	SE	View of lower half of blocked archway [PI. 85]
176	-	GF/FF	SE	Detail of blocked archway
177	1m	FF	SE	General view of wall
178	20cm	FF	SE	Wall detail
179	1m	FF/SF	SE	General view of wall [PI. 84]
180	1m	FF/SF	SE	View of upper half of blocked archway
181	20cm	FF/SF	SE	Wall detail
182	1m	SF	SE	General view of wall [PI. 86]

<i>Cat. No.</i>	<i>Scales</i>	<i>Location</i>	<i>Direction</i>	<i>Description</i>
183	-	SF	SE	Wall detail
184	20cm	SF	SE	Wall detail
185	-	SF	SE	General view of wall
186	1m	SF	SE	General view of wall
187	-	SF	SE	Wall detail
188-704 not used				
705 (1)	1m	Office FF	NW	View to chimney breast [PI. 87]
705 (2)	1m	Office FF	NW	View to chimney breast
706	1m	Office FF	NW	Chimney breast and wall detail
707	-	Office FF	NW	Wall detail
708	-	Office FF	NW	Beams and coving
709	-	Office FF	W	Beams and coving
710	-	Office FF	W	Beams and coving
711	-	Office FF	W	Beams and coving
712	-	Office FF	SW	Coving detail
713	-	Office FF	S	Beams and coving detail
714	-	Office FF	S	Beams and coving detail
715	-	Office FF	SE	Upper wall and coving, looking towards door [PI. 91]
716	-	Office FF	SE	Upper wall and coving, looking towards door
717	-	Office FF	NW	Wall paper detail [PI. 89]
718	-	Office FF	NW	Upper wall, brick and plaster [PI. 97]
719	1m	Office FF	W	Chimney breast, oblique
720	-	Office FF	SE	Wall and plaster detail
721	-	Office FF	SE	Looking up, picture rail and coving detail
722	-	Office FF	SE	Looking up brick, beam and coving detail
723	1m	Office FF	SE	Looking down, hearth tile detail [94]
724	1m	Office FF	SW	View to windows showing coving
725	1m	Office FF	SW	View to windows showing coving [PI. 92]
726	-	Office FF	NW	Inscribed brick detail 'PHO'
727	-	Office FF	NW	Chimney breast corner detail
728	-	Office FF	NW	Chimney breast corner detail
729	-	Office FF	NW	Chimney breast corner detail
730	1m	Office FF	SE	Doorway with adjacent wallpaper [PI. 90]
731	1m	Office FF	SE	Doorway with adjacent wallpaper
732	1m	Office SF	NE	Wall paper detail
733	1m	Office SF	NE	Wall paper detail [PI. 100]
734	1m	Office SF	NE	Wall paper detail [PI. 99]
735	1m	Office SF	NE	Wall paper detail
736	1m	Office SF	NE	Wall paper detail
737	1m	Office SF	NE	Wall paper detail
738	-	Office SF	SE	Roof detail
739	-	Office SF	SE	Roof detail
740	-	Office SF	SE	Roof detail
741	-	Office SF	NW	Roof detail
742	-	Office SF	NW	Roof detail [PI. 105]
743	-	Office SF	NW	Roof detail showing overhanging purlin [PI. 104]
744	-	Office SF	SW	Truss detail [PI. 101]
745	1m	Office SF	SW	View to windows [PI. 98]
746	-	Office SF	NE	Truss detail [PI. 103]
747	-	Office SF	SW	Gable end lath and plaster [PI. 102]
748	1m	Office FF	NW	Looking down, brick hearth detail [PI. 93]
749	-	Office FF	S	View towards door, oblique
750	-	Office FF	S	View towards door, oblique
751	-	Office FF	NW	Fitting detail [PI. 96]
752	1m	Office FF	SE	View towards door [PI. 88]
753	1m	Office FF	SE	View towards door
754	-	Office FF	NW	Wall paper detail
755	-	Office FF	NW	Wall paper and fitting detail
756	-	Office FF	NE	Beams
757	-	Office FF	W	Chimney breast corner detail [PI. 95]



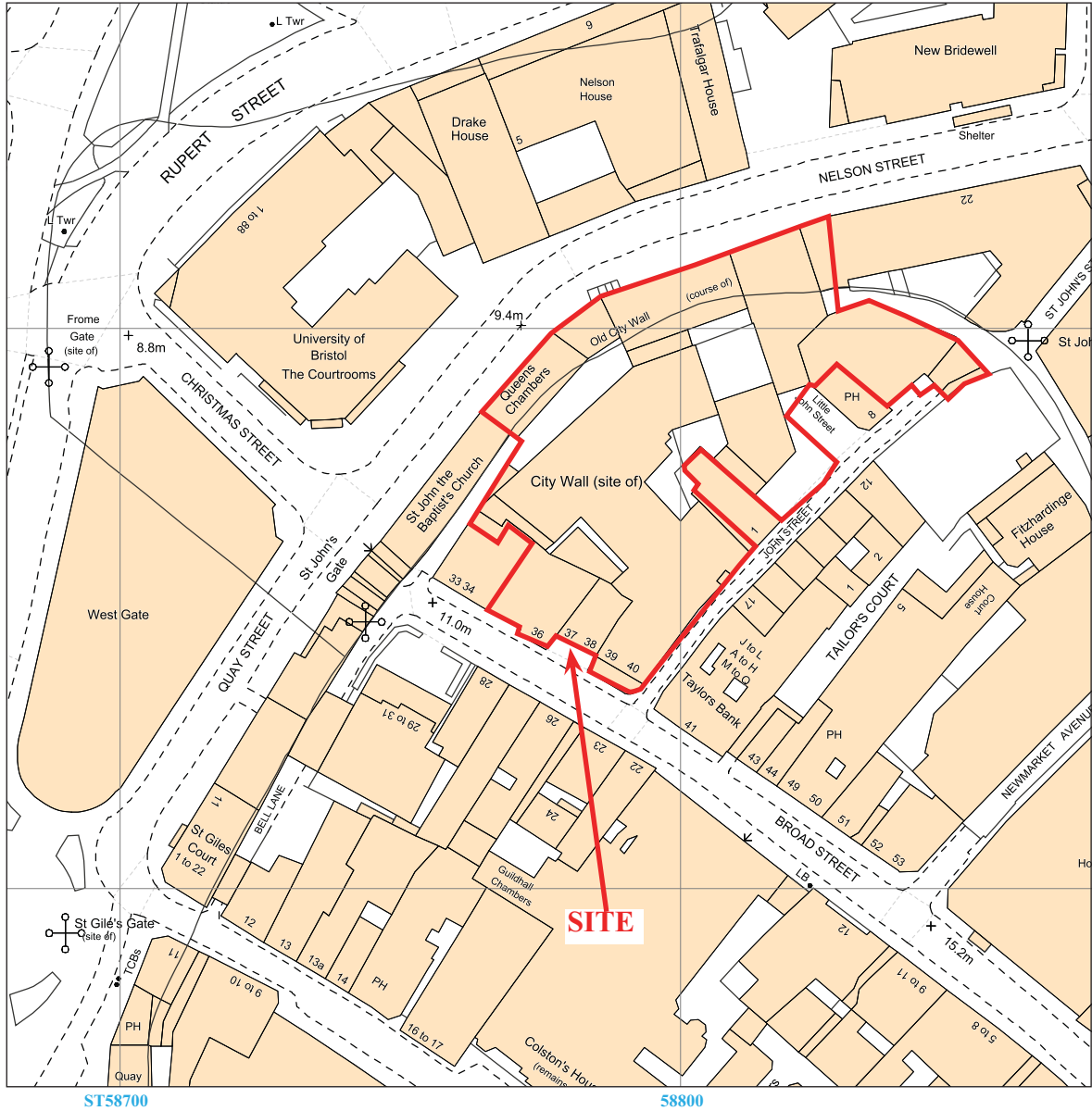
National Westminster Court, Broad Street,
Bristol, 2020

Building Recording

Figure 1. Location of site within Broad Street and Bristol.

Reproduced under licence from Ordnance Survey Explorer Digital mapping at 1:12500
Crown Copyright reserved





BSB 20/23

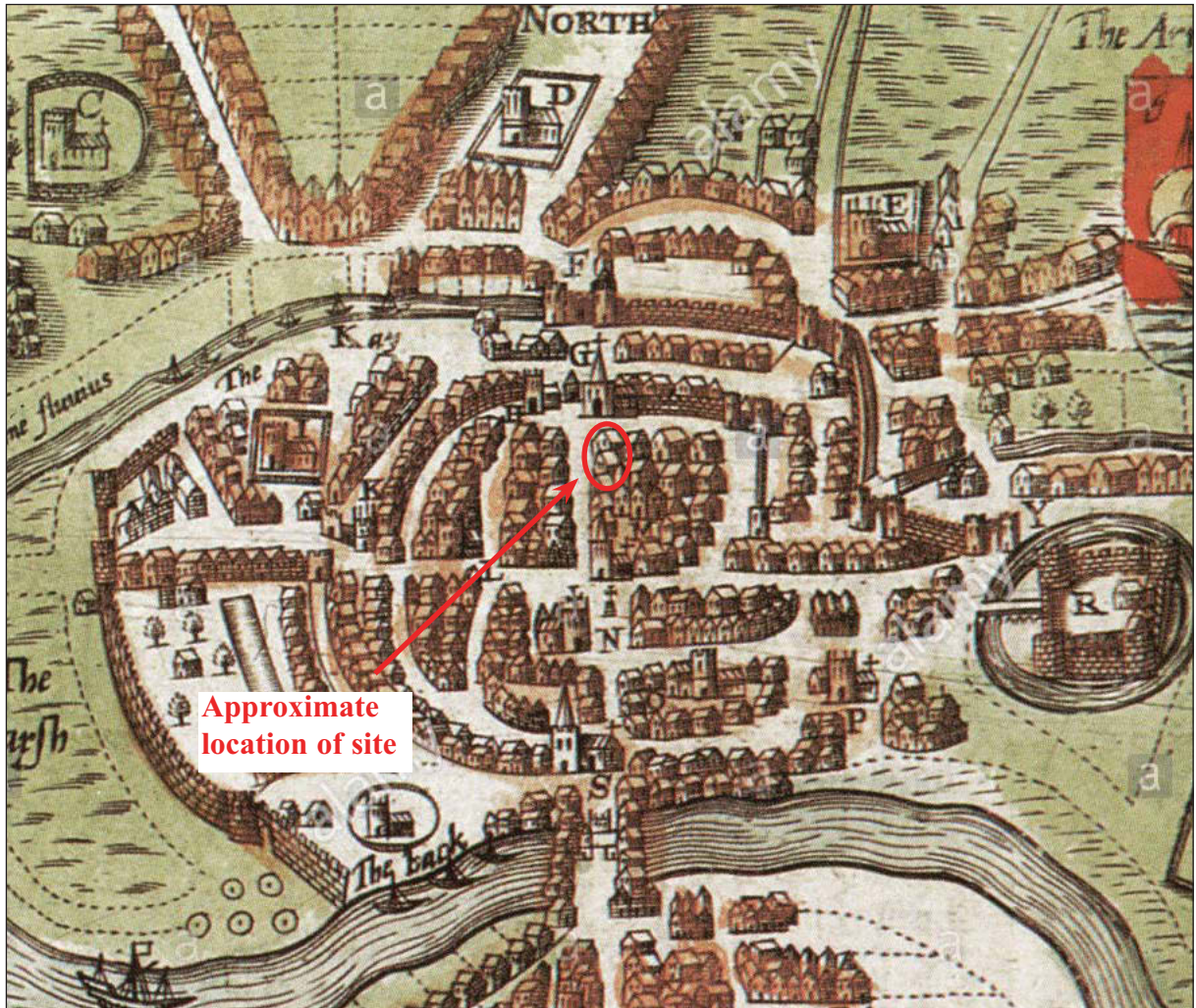


**National Westminster Court, Broad Street,
Bristol, 2020
Building Recording**

Figure 2. Detailed location of site off Broad Street.

Reproduced from Ordnance Survey Digital Mapping under licence.
Crown copyright reserved. Scale 1:1250

THAMES VALLEY
ARCHAEOLOGICAL
SERVICES



Approximate
location of site

BSB 20/23



National Westminster Court, Broad Street,
Bristol, 2020

Building Recording

Figure 3. Speed's map of Bristol, 1611.

THAMES VALLEY
ARCHAEOLOGICAL
SERVICES



Figure 4. The Guildhall Tavern, 43 Broad Street, early 19th century



Figure 5. The Western Daily Press, 5 Broad Street

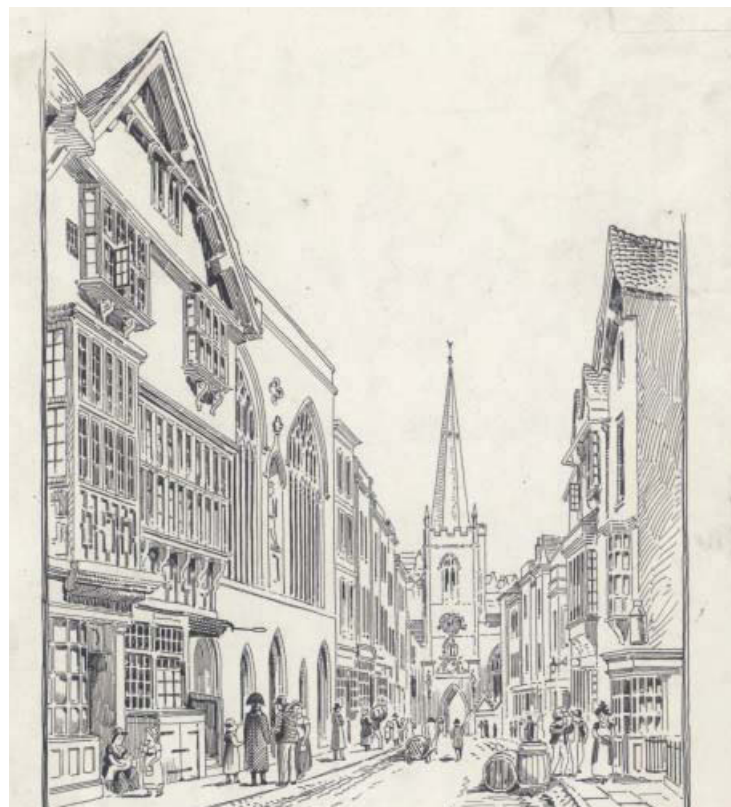


Figure 6. St John's Gate, Broad Street, 1823

BSB 20/23

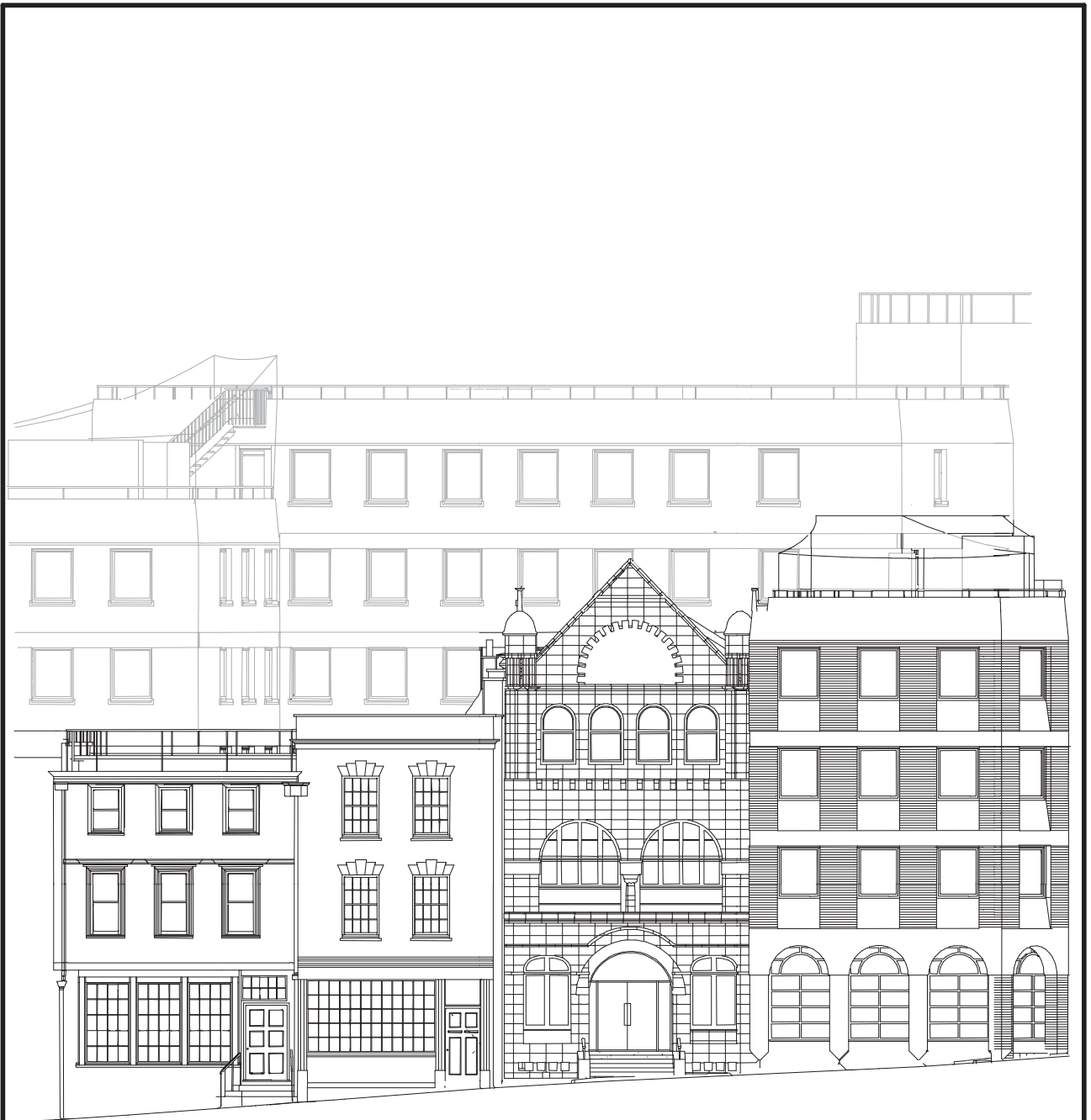


National Westminster Court, Broad Street,
Bristol, 2020

Building Recording

Figures 4-6. Drawings of Broad Street

THAMES VALLEY
ARCHAEOLOGICAL
SERVICES



No. 35

No. 36

Nos 37-8
(Everards)

Nos 39-40
(National Westminster Court)

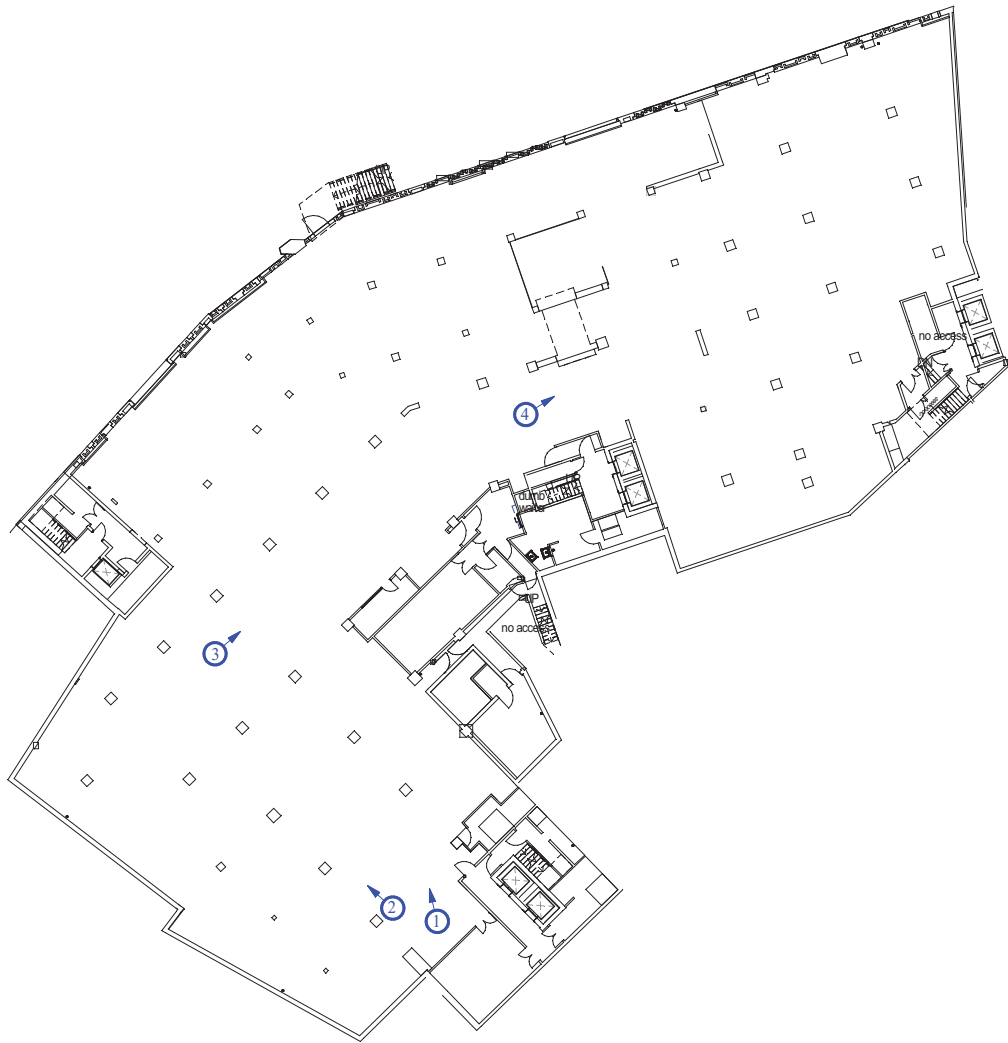
BSB 20/23

**National Westminster Court, Broad Street,
Bristol, 2020
Building Recording**

Figure 7. Broad Street elevation.



THAMES VALLEY
ARCHAEOLOGICAL
SERVICES



BSB 20/23

**National Westminster Court, Broad Street,
Bristol, 2020
Building Recording**

Figure 8. Lower Ground L2.



THAMES VALLEY
ARCHAEOLOGICAL
 SERVICES



BSB 20/23

National Westminster Court, Broad Street,
 Bristol, 2020
 Building Recording

Figure 9. Lower Ground L1.



THAMES VALLEY
 ARCHAEOLOGICAL
 SERVICES



BSB 20/23

National Westminster Court, Broad Street,
Bristol, 2020
Building Recording

Figure 10. Ground floor.



THAMES VALLEY
ARCHAEOLOGICAL
SERVICES



BSB 20/23

National Westminster Court, Broad Street,
Bristol, 2020
Building Recording

Figure 11. Level 01.



THAMES VALLEY
ARCHAEOLOGICAL
SERVICES



BSB 20/23



National Westminster Court, Broad Street,
Bristol, 2020
Building Recording

Figure 12. Level 02.



THAMES VALLEY
ARCHAEOLOGICAL
SERVICES



BSB 20/23

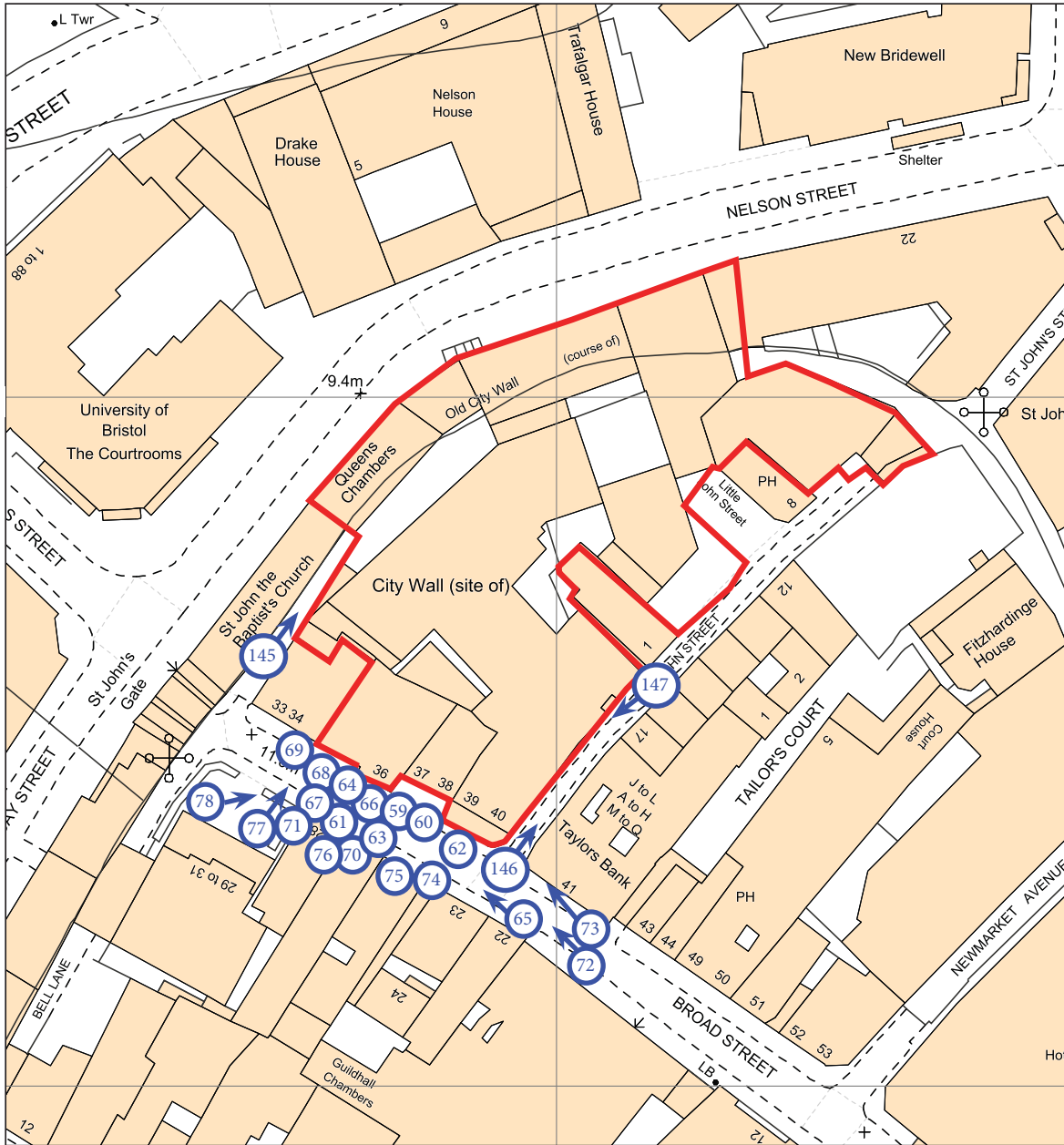


National Westminster Court, Broad Street,
Bristol, 2020
Building Recording

Figure 13. Roof plan.



THAMES VALLEY
ARCHAEOLOGICAL
SERVICES



BSB 20/32

**National Westminster Court, Broad Street,
Bristol, 2020**

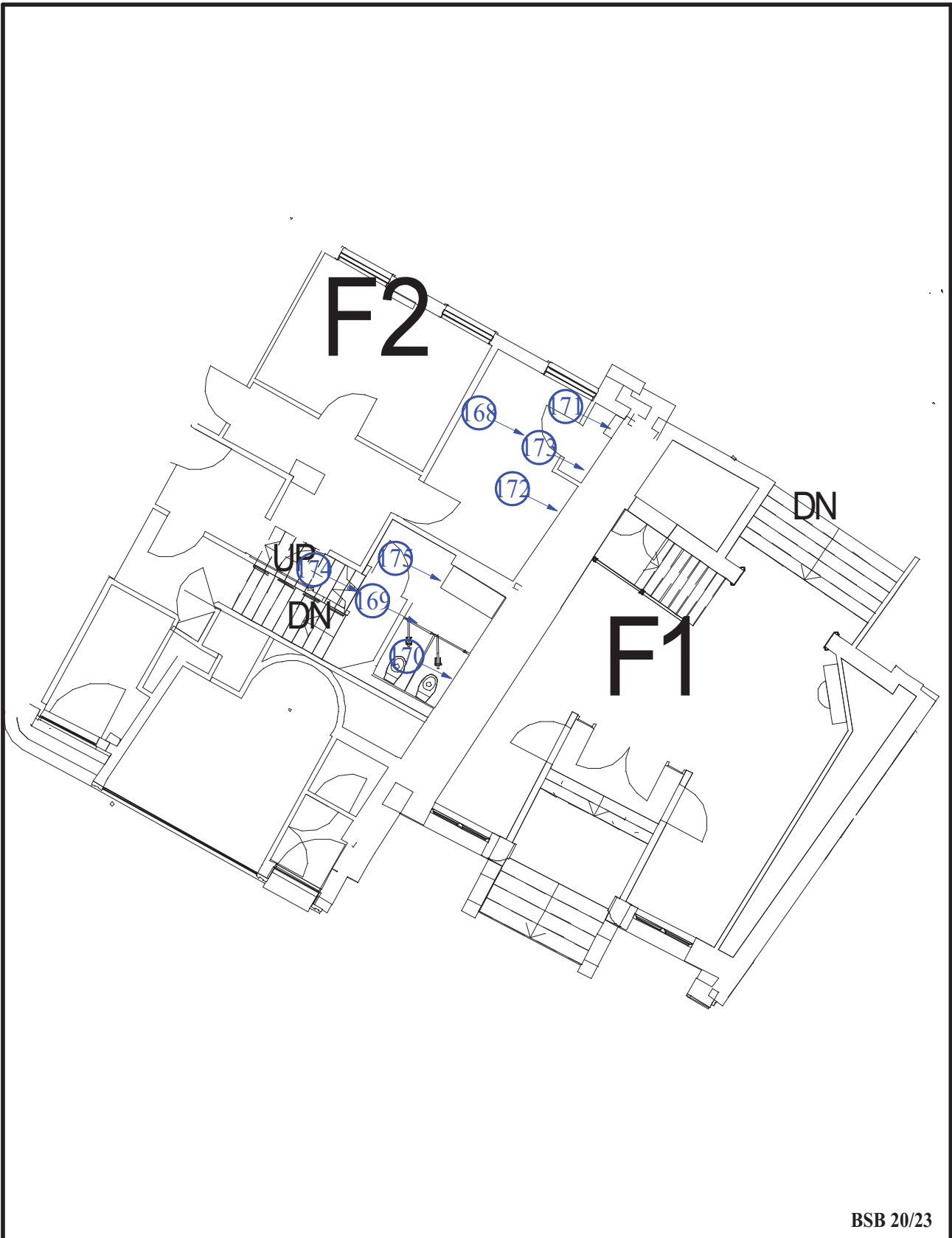
Building Recording

Figure 14. Exterior photograph locations.

Reproduced from Ordnance Survey Digital Mapping under licence.
Crown copyright reserved. Scale 1:1000



THAMES VALLEY
ARCHAEOLOGICAL
SERVICES



BSB 20/23

National Westminster Court, Broad Street,
 Bristol, 2020
 Building Recording

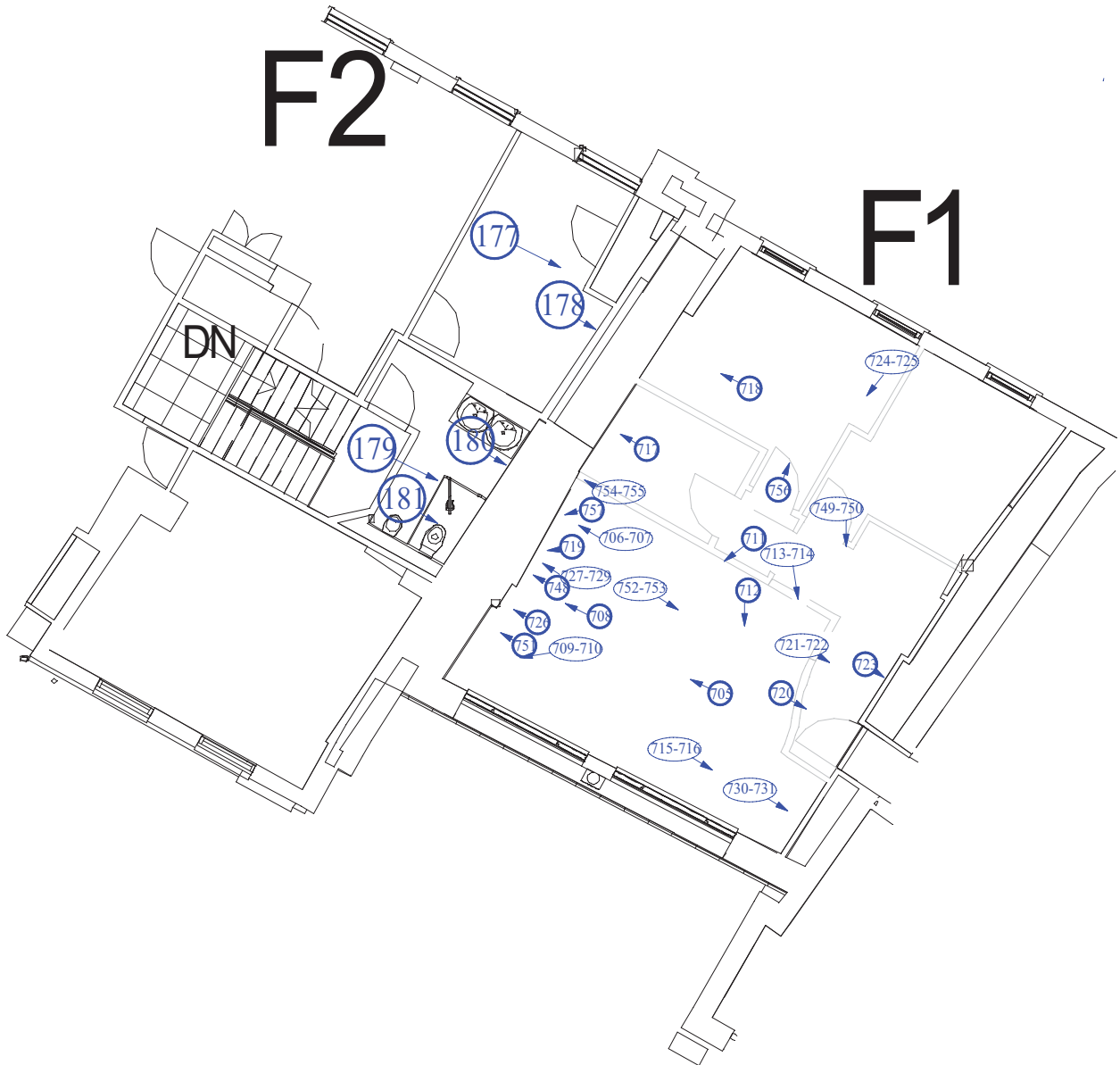
Figure 15. Ground Floor, supplementary visit.



THAMES VALLEY
 ARCHAEOLOGICAL
 SERVICES

F2

F1



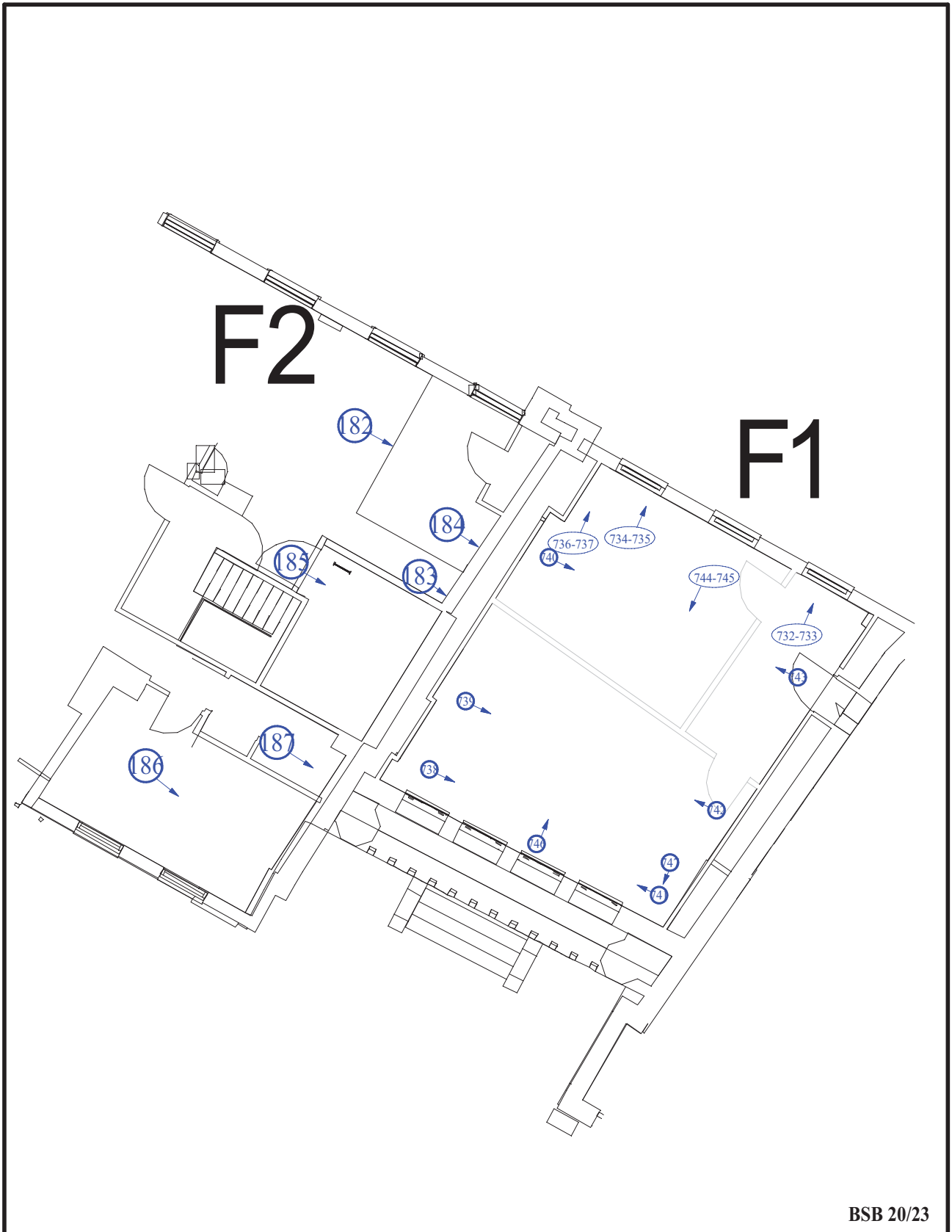
BSB 20/23

National Westminster Court, Broad Street,
Bristol, 2020
Building Recording

Figure 16. Level 01, supplementary visit



THAMES VALLEY
ARCHAEOLOGICAL
SERVICES



BSB 20/23

**National Westminster Court, Broad Street,
Bristol, 2020
Building Recording**

Figure 12. Level 02, supplementary visit.



0 12.5m

THAMES VALLEY
ARCHAEOLOGICAL
SERVICES



Plate 1. Exterior, oblique 35 and 36 Broad Street, looking east.



Plate 2. Exterior, undercroft entrance, 35 Broad Street, looking NE, Scales: 2 x 1m.



Plate 3. Exterior, oblique 35 Broad Street, looking NE. Scales: 2 x 1m.



Plate 4. Exterior, door to 35 Broad Street, looking E. Scales: 2 x 1m.

BSB 20/23

**National Westminster Court, Broad Street,
Bristol, 2020
Building Recording
Plates 1 to 4.**

THAMES VALLEY
ARCHAEOLOGICAL
SERVICES



Plate 5. Ground floor, view to windows, looking SW,
Scales: 2 x 1m.



Plate 6. Exterior, frontage to 36 Broad Street, looking NE.



Plate 7. First floor window detail, looking SW,
Scales: 2 x 1m.



Plate 8. Second floor window detail, looking SW,
Scales: 2 x 1m.

BSB 20/23

**National Westminster Court, Broad Street,
Bristol, 2020
Building Recording
Plates 5 to 8.**

THAMES VALLEY
ARCHAEOLOGICAL
SERVICES



Plate 9. Exterior, hopper detail, looking NE.



Plate 10. View to blocked door, lower ground 1, looking SW, Scales: 2 x 1m.



Plate 11. View to rear of undercroft, lower ground 1, looking NE, Scales: 2 x 1m.



Plate 12. View to 36 Broad Street through arch, lower ground 1, looking SE, Scales: 2 x 1m.

BSB 20/23

**National Westminster Court, Broad Street,
Bristol, 2020
Building Recording
Plates 9 to 12.**

THAMES VALLEY
ARCHAEOLOGICAL
SERVICES



Plate 13. Lower ground 1, pier detail, looking WNW,
Scales: 2 x 1m.



Plate 14. Ground floor, entrance lobby, looking NW,
Scales: 2 x 1m.



Plate 15. Ground floor beam detail, looking up.



Plate 16. Ground floor beam detail, looking SE.

BSB 20/23

**National Westminster Court, Broad Street,
Bristol, 2020
Building Recording
Plates 13 to 16.**

THAMES VALLEY
ARCHAEOLOGICAL
SERVICES



Plate 17. Ground floor, beam detail, looking NE.



Plate 18. Ground floor, beam detail, looking NE.



Plate 19. Ground floor, hole in wall, looking NW.



Plate 20. Ground floor, general view, looking NE,
Scales: 2 x 1m.

BSB 20/23

**National Westminster Court, Broad Street,
Bristol, 2020
Building Recording
Plates 17 to 20.**

THAMES VALLEY
ARCHAEOLOGICAL
SERVICES



Plate 21. Second floor view stairwell, looking SE, Scales: 2 x 1m.



Plate 22. First floor view to windows, looking SW, Scales: 2 x 1m.



Plate 23. First floor view to windows, looking NE, Scales: 2 x 1m.



Plate 24. Second floor view to windows, looking SW, Scales: 2 x 1m.

BSB 20/23

**National Westminster Court, Broad Street,
Bristol, 2020
Building Recording
Plates 21 to 24.**

THAMES VALLEY
ARCHAEOLOGICAL
SERVICES



Plate 25. Second floor, general view, looking ESE,
Scales: 2 x 1m.



Plate 26. Second floor, general view, looking NW,
Scales: 2 x 1m.



Plate 27. 35 Broad Steet roof, looking south..



Plate 28. Exterior oblique to 36 Broad Street, looking
NW, Scales: 2 x 1m.

BSB 20/23

**National Westminster Court, Broad Street,
Bristol, 2020
Building Recording
Plates 25 to 28.**

THAMES VALLEY
ARCHAEOLOGICAL
SERVICES



Plate 29. Exterior oblique, 36 Broad Street, looking E,
Scales: 2 x 1m.



Plate 30. Exterior Door, 36 Broad Street, looking NE,
Scales: 2 x 1m.



Plate 31. View to windows, ground floor, looking WSW.



Plate 32. Exterior 36 Broad Street frontage, looking NE.

BSB 20/23

**National Westminster Court, Broad Street,
Bristol, 2020
Building Recording
Plates 29 to 32.**

THAMES VALLEY
ARCHAEOLOGICAL
SERVICES



Plate 33. Second floor, window detail, looking SW,
Scales: 2 x 1m.



Plate 34. View to rear of cellar, lower ground 1, looking
NE, Scales: 2 x 1m.



Plate 35. View to spiral stair location, lower ground 1,
looking SE, Scales: 2 x 1m.



Plate 36. View along corridor, lower ground 1, looking W,
Scales: 2 x 1m.

BSB 20/23

**National Westminster Court, Broad Street,
Bristol, 2020
Building Recording
Plates 33 to 36.**

THAMES VALLEY
ARCHAEOLOGICAL
SERVICES



Plate 37. Ground floor view to doors, looking E.

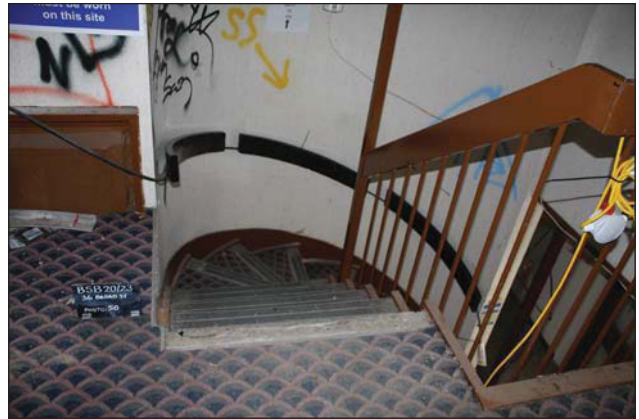


Plate 38. Ground floor, spiral stair detail, looking NW.



Plate 39. Ground floor, general view, looking NE.,
Scales: 2 x 1m.



Plate 40. First floor, general view, looking S.

BSB 20/23

**National Westminster Court, Broad Street,
Bristol, 2020
Building Recording
Plates 37 to 40.**

THAMES VALLEY
ARCHAEOLOGICAL
SERVICES



Plate 41. First floor general view, looking NE,
Scales: 2 x 1m.



Plate 42. Second floor general view, looking SE,
Scales: 2 x 1m.



Plate 43. 36 Broad Street roof, looking south.



Plate 44. Everards frontage, looking NE.

BSB 20/23

**National Westminster Court, Broad Street,
Bristol, 2020
Building Recording
Plates 41 to 44.**

THAMES VALLEY
ARCHAEOLOGICAL
SERVICES



Plate 45. Exterior, Everards window detail, looking NE,
Scales: 2 x 1m.



Plate 46. Exterior, steps to Everards, looking NE,
Scales: 2 x 1m.



Plate 47. Ground floor, Everards gate detail, looking SW,
Scales: 2 x 1m.



Plate 48. Exterior, frontage to Everards, looking NE.

BSB 20/23

National Westminster Court, Broad Street,
Bristol, 2020
Building Recording
Plates 45 to 48.

THAMES VALLEY
ARCHAEOLOGICAL
SERVICES



Plate 49. Exterior, Edward (Everard) window detail, looking NE.



Plate 50. Exterior, Everard window detail, looking NE.



Plate 51. Exterior, Springer detail, looking NE.



Plate 52. Exterior, Gutenberg detail, looking NE.

BSB 20/23

National Westminster Court, Broad Street,
Bristol, 2020
Building Recording
Plates 49 to 52.

THAMES VALLEY
ARCHAEOLOGICAL
SERVICES



Plate 53. External, Morris detail, looking NE.



Plate 54. External, cupola detail, looking NE.

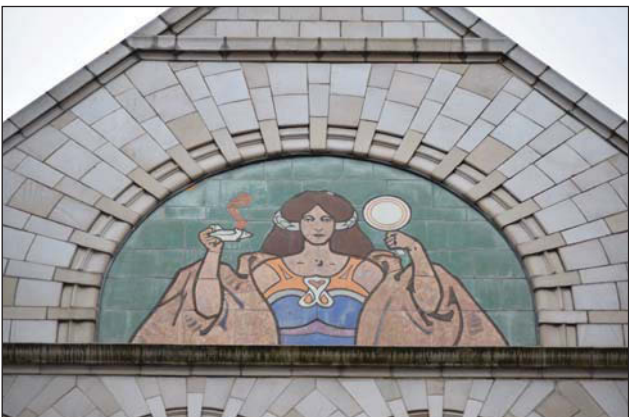


Plate 55. External, apex detail, looking NE.



Plate 56. Lower ground 1, view to modernized front of undercroft, looking SW, Scales: 2 x 1m.

BSB 20/23

National Westminster Court, Broad Street,
Bristol, 2020
Building Recording
Plates 53 to 56.

THAMES VALLEY
ARCHAEOLOGICAL
SERVICES



Plate 57. View to rear of undercroft, (lower ground 1), looking NE, Scales: 2 x 1m.



Plate 58. Lower ground 1, pier detail and brickwork in arch, looking NW, Scales: 2 x 1m.



Plate 59. Ground floor door detail (Everards), looking SE, Scales: 2 x 1 m.



Plate 60. Frieze detail above arch (ground floor, Everards), looking SW.

BSB 20/23

**National Westminster Court, Broad Street,
Bristol, 2020
Building Recording
Plates 57 to 60.**

THAMES VALLEY
ARCHAEOLOGICAL
SERVICES



Plate 61. Ceiling detail (Everards, ground floor), looking SW.



Plate 62. View to window (Everards, ground floor), looking SSE, Scales: 2 x 1m.



Plate 63. Coving detail (Everards, ground floor), looking NE..



Plate 64. Stair detail (Everards, ground floor), looking SW, Scales: 2 x 1m..

BSB 20/23

**National Westminster Court, Broad Street,
Bristol, 2020
Building Recording
Plates 61 to 64.**

THAMES VALLEY
ARCHAEOLOGICAL
SERVICES



Plate 65. Brickwork above arch (ground floor, Everards), looking east.



Plate 66. First floor, general view, looking SW, Scales: 2 x 1m.



Plate 67. First floor, view to windows, looking W, Scales: 2 x 1m.



Plate 68. First floor, general view, looking east, Scales: 2 x 1m.

BSB 20/23

**National Westminster Court, Broad Street,
Bristol, 2020
Building Recording
Plates 65 to 68.**

THAMES VALLEY
ARCHAEOLOGICAL
SERVICES



Plate 69. First floor, general view to windows , looking east, Scales: 2 x 1m.



Plate 70. View to windows and blocked chimney, looking WSW, Scales: 2 x 1m.



Plate 71. Second floor, general view, looking east, Scales: 2 x 1m..



Plate 72. View along second floor corridor, looking NE, Scales: 2 x 1m.

BSB 20/23

**National Westminster Court, Broad Street,
Bristol, 2020
Building Recording
Plates 69 to 72.**

THAMES VALLEY
ARCHAEOLOGICAL
SERVICES



Plate 73. Second floor gable end, looking NE.



Plate 74. Second floor gable end, looking SW.



Plate 75. Everards roof, looking SW.



Plate 76. Second floor roof detail, looking SE.

BSB 20/23

**National Westminster Court, Broad Street,
Bristol, 2020
Building Recording
Plates 73 to 76.**

THAMES VALLEY
ARCHAEOLOGICAL
SERVICES



Plate 77. View of carpark towards Nelson Street, looking NNW.



Plate 78, Canteen looking SW, Scales: 2 x 1m.



Plate 79. Ground floor window, looking NW, Scales: 2 x 1m.



Plate 80. Second floor general view, looking North, Scales: 2 x 1m.

BSB 20/23

**National Westminster Court, Broad Street,
Bristol, 2020
Building Recording
Plates 77 to 80.**

THAMES VALLEY
ARCHAEOLOGICAL
SERVICES



BSB 20/23

**National Westminster Court, Broad Street,
Bristol, 2020**

Building Recording

Plate 81. Composite orthophoto of all visible sections of the
medieval wall. Scales 1m.

THAMES VALLEY
ARCHAEOLOGICAL
SERVICES



Plate 82. Wall detail, looking SE, Scales 1 x 0.2m.



Plate 83. Stone quoins, looking SE, Scales: 0.2m & 1m.



Plate 84. Top of arch, looking SE, Scales: 1 x 1m.



Plate 85. Lower half of arch, looking SE.

BSB 20/23

**National Westminster Court, Broad Street,
Bristol, 2020
Building Recording
Plates 82 to 85.**

THAMES VALLEY
ARCHAEOLOGICAL
SERVICES



Plate 86. Wall detail showing brick area, looking SE,
Scales 1 x 1m.



Plate 87. View to chimney breast, looking NW,
Scales: 1 x 1m.



Plate 88. View to chimney breast, looking SE,
Scales: 1 x 1m.



Plate 89. Wall paper detail, looking NW.

BSB 20/23

**National Westminster Court, Broad Street,
Bristol, 2020
Building Recording
Plates 86 to 89.**

THAMES VALLEY
ARCHAEOLOGICAL
SERVICES



Plate 90. Wall paper detail, looking SE, Scales 1 x 1m.



Plate 91. Picture rail and coving, looking SE.



Plate 92. View to windows, showing coving, looking SW, Scales: 1 x 1m.



Plate 93. Hearth detail, looking NW, Scales 1 x 1m.

BSB 20/23

**National Westminster Court, Broad Street,
Bristol, 2020
Building Recording
Plates 90 to 93.**

THAMES VALLEY
ARCHAEOLOGICAL
SERVICES



Plate 94. Hearth detail, looking SE, Scales 1 x 1m.



Plate 95. Chimney breast corner detail, looking W.



Plate 96. Fitting detail, looking NW.



Plate 97. Upper wall decoration, looking NW.

BSB 20/23

**National Westminster Court, Broad Street,
Bristol, 2020
Building Recording
Plates 94 to 97.**

THAMES VALLEY
ARCHAEOLOGICAL
SERVICES



Plate 98. View to windows, looking SW, Scales 1 x 1m.



Plate 99. Wall paper detail, looking NE, Scales 1 x 1m.



Plate 100. Wall paper detail, looking NE, Scales 1 x 1m.



Plate 101. Truss detail, looking SW.

BSB 20/23

**National Westminster Court, Broad Street,
Bristol, 2020
Building Recording
Plates 98 to 101.**

THAMES VALLEY
ARCHAEOLOGICAL
SERVICES



Plate 102. Gable end lath and plaster detail, looking SW.



Plate 103. Truss detail, looking NE.



Plate 104. Roof detail showing overhanging purlin, looking NW.



Plate 105. Roof detail, looking NW.

BSB 20/23

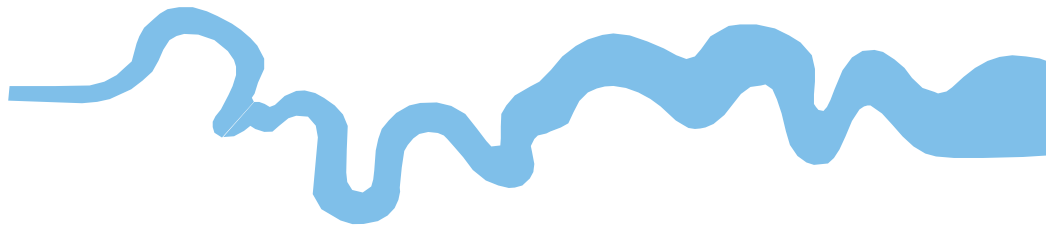
**National Westminster Court, Broad Street,
Bristol, 2020
Building Recording
Plates 102 to 105.**

THAMES VALLEY
ARCHAEOLOGICAL
SERVICES

TIME CHART

	Calendar Years
Modern _____	AD 1901
Victorian _____	AD 1837
Post Medieval _____	AD 1500
Medieval _____	AD 1066
Saxon _____	AD 410
Roman _____	AD 43 AD 0 BC
Iron Age _____	750 BC
Bronze Age: Late _____	1300 BC
Bronze Age: Middle _____	1700 BC
Bronze Age: Early _____	2100 BC
Neolithic: Late	3300 BC
Neolithic: Early	4300 BC
Mesolithic: Late	6000 BC
Mesolithic: Early	10000 BC
Palaeolithic: Upper	30000 BC
Palaeolithic: Middle	70000 BC
Palaeolithic: Lower	2,000,000 BC





**Thames Valley Archaeological Services Ltd,
47-49 De Beauvoir Road,
Reading RG1 5NR**

**Tel: 0118 9260552
Email: tvas@tvas.co.uk
Web: www.tvas.co.uk**

***Offices in:
Brighton, Taunton, Stoke-on-Trent, Wellingborough
and Ennis (Ireland)***