

T H A M E S V A L L E Y

ARCHAEOLOGICAL

S E R V I C E S

**Newbury Racecourse, Newbury,
West Berkshire**

Building Recording

by Genni Elliott

Site Code NRW 15/179

(SU 4845 6677)

Newbury Racecourse, Newbury, West Berkshire

Building Recording For Newbury Racecourse

by Genni Elliott

Thames Valley Archaeological Services Ltd

Site Code NRW15/179

September 2015

Summary

Site name: Newbury Racecourse, Newbury, West Berkshire

Grid reference: SU 4845 6677

Site activity: Building Recording

Date and duration of project: 19th – 20th August 2015

Project manager: Steve Ford

Site code: NRW 15/179

Summary of results: Both the Copper King and nursery buildings were built between 1911 and 1933. Modifications to the buildings appear to have occurred relatively recently with the addition of portacabins to the Copper King building and the infilling of the gap between the two nursery buildings and beneath the canopy area. Internally both buildings have been modernized.

Location and reference of archive: The archive is presently held at Thames Valley Archaeological Services, Reading and will be deposited with West Berkshire Museum in due course.

*This report may be copied for bona fide research or planning purposes without the explicit permission of the copyright holder. All TVAS unpublished fieldwork reports are available on our website:
www.tvas.co.uk/reports/reports.asp.*

Report edited/checked by: Steve Ford✓ 23.09.15 Steve Preston✓ 23.09.15

Newbury Racecourse, Newbury, West Berkshire Building Recording

by Genni Elliott

Report 15/179

Introduction

This report documents the results of building recording at Newbury Racecourse, Newbury, West Berkshire (SU 4845 6677) (Fig. 1). The work was commissioned by Mr Alex Pickard of KKA Architecture, Highpoint, Highfield Street, Liverpool, L3 6AA on behalf of Newbury Racecourse, Newbury RG14 7NZ.

Planning consent (appln no. 13/00429/RESMAJ) has been granted by West Berkshire Council to demolish buildings on the site prior to redevelopment. The consent is subject to a condition which requires an historic building recording in advance of the demolition. This report documents the results of the building survey.

This is in accordance with the Department for Communities and Local Government's *National Planning Policy Framework* (NPPF 2012), and the Council's policies on the historic environment. The fieldwork was undertaken by Genni Elliott and Dan Strachan on 19th-20th August 2015 and the site code is NRW 15/179.

The archive is presently held at Thames Valley Archaeological Services, Reading and will be deposited with West Berkshire Museum and a copy sent to the Historic England Archive in due course.

Location, topography and geology

Newbury racecourse is located immediately to the east of Newbury town centre and to the south of the train line and Newbury Racecourse station (Fig. 1). It is accessed off of Racecourse Road (Fig. 2). The site lies at approximately 75m above Ordnance Datum and the underlying geology is recorded as river and valley gravel (BGS 1947). The buildings to be recorded, known as the Copper King building and the nursery, form part of a group on the north side of the racecourse.

Historical Background

Horse racing in Newbury commenced in 1805 with the two day Newbury Races, located at Enborne. The meeting subsequently moved to Woodhay Heath between 1811 and 1815. The existing racecourse was proposed in the early 1900s by Kingsclere trainer John Porter, but failed to get approval until it was supported by King Edward VII. A company was formed (the Newbury Racecourse Company) in April 1904 and purchased the land

and constructed the buildings and stables at a cost of £57, 240. The course is situated on a portion of the former Baxendale estate

The first race (the Whatcombe Handicap) took place in September 1905, and was won by Copper King, ridden by Charles Trigg.

During the First World War, the racecourse was used as a prisoner of war camp for German soldiers and during the Second World War it was used by the US Army and as a prisoner of war camp.

A range of Ordnance Survey maps were consulted online in order to show the development of the site. The earliest map to show the racecourse is the 1911 Third Edition Ordnance Survey (Fig. 3), which shows the course itself and a small number of buildings including a grandstand and stables, but not the Copper King or Nursery buildings. The First and Second Editions show only fields in the area. The next available map dates to 1933 (Fig. 4), where it is possible to see that extensive development has occurred to include a paddock flanked by stands, and additional buildings including the Copper King (labelled 'Totalisator') and nursery buildings. Both of the nursery buildings are shown with covered canopy areas. By 1967 (Fig. 5), all three buildings are labelled totalisator and the Copper King building now shows a canopy on both the east and west sides of the building. Landscaping has also occurred between the buildings. No further change is apparent by 1982, nor by 1994, indicating just how recently the Copper King building was extended and the two buildings making up the nursery joined together and the external canopies infilled. The nursery itself was founded in 1992.

Methodology

The building survey was carried out in accordance with guidelines set out by the Royal Commission on Historic Monuments for a level 3 record (RCHM(E) 1996).

The survey comprised a fully analytical record of the building's development, a comprehensive photographic survey, paying attention to the methods of construction, chronological development and alterations, and features of special interest. The building has been recorded photographically both digitally and on 35mm format using colour print and black and white media which are catalogued (Appendix 1).

Description

Copper King Building (Figs 6 and 7)

The Copper King Building (Pls 1-4) consisted of an approximately north-south aligned rectangular building with two extensions on the east side. It had a central two-storey part with a single storey at either end. It was of steel

RSJ construction, infilled with bricks laid in English Bond, bonded in cement mortar. The bricks measured 221mm x 108mm x 62mm (8 ¾" x 4 ¼" x 2 ½"). Lintels above the windows were of concrete. The upper part of the first storey was decorated with a frieze (Pl. 5), possibly of stone, or imitation stone with reeded decoration, extending around three sides of the building with a separate section on the west face. Above the frieze was a brick parapet concealing the flat roof. A small brick parapet was also present around the single-storey sections.

The majority of the windows had been replaced, but those that were original consisted of white painted wooden frames sub-divided into smaller square panes.

Externally it was possible to see a number of alterations, namely the two portacabin type extensions on the east side (Pl. 1) situated beneath a covered canopy (also a later addition) supported on steel girders and running the length of the building and covered in corrugated steel sheets. In order to accommodate the two extensions a number of windows were blocked as evidenced by the concrete lintels. Alterations were clearer on the other elevations with three blocked windows present on the south elevation (Pl. 2), infilled with bricks laid in Flemish bond, and a number of horizontal blocked windows beneath the roof line on the west side of the building along with a doorway that had been converted into a window and a likely door at the south end. All were infilled with bricks laid in Flemish bond.

Roof construction was a combination of a slate covered, hipped roof at either end and a central flat roof above the two storey section. The flat roof was constructed of steel panels overlaid with concrete beams. Drainpipes, where seen, were original cast iron.

Internally the building was divided into five distinct sections, most of which were further sub-divided into rooms, and a first floor (Fig. 7).

Section 1 was located within the portacabin extension at the south end of the building and contained rooms 1-3, 9 as well as two small store rooms and ladies' and gents' toilets. It was entirely modern in both construction and decoration with stud walls and carpeted or laminated floors. Entrance to the building as a whole was via a door in the east façade which entered directly into room 1 (reception) (Pl. 6) which gave access to a small storeroom, room 4 of the original building and corridor 2. Corridor 2 was located on the west side of the portacabin, adjacent to the original external wall in which could be seen a blocked window. The corridor gave access to conference room 9 and kitchen 3. Located off of the kitchen was a second access to room 4, a small storeroom and ladies and gents toilets.

Section 2 was located within the single-storey section of the original building at the south end. Unlike all the other sections it consisted of only one room; numbered 4. Its current use was as an open plan office (Pl. 7), with carpeted floors and a modern suspended ceiling. The brick walls had been painted cream and windows were present within the west wall, overlooking the paddock area. A single external door was present at the south end of the building in the east wall. Within the room were a number of squared steel posts (Pl. 8), presumably supporting the roof trusses. The section was sub-divided from section 3 by a brick wall, through which was access to storage room 8 and room 5.

Section 3 was located within the central (two-storey) section of the original building and could be sub-divided into five ground floor rooms (numbered 5-8 and part of 11) as well as access to the first floor via a set of enclosed stairs at the south end of the room. The majority of the space was occupied by room 5, an open plan office with windows overlooking the paddock area (Pl. 9). Along the east side of the section smaller rooms; room 8 was a storeroom, rooms 6 (Pl. 10) and 7 were offices and room 11 was a larger office that extended into section 4. Each of the rooms had windows in the east wall overlooking the covered section. The offices were of stud wall construction located along the line of a row of steel RSJ's measuring 247mm x 231mm (9 ¾" x 9 ⅛") in cross-section, which supported the first floor; a second row was present within the centre of room 5 (Pl. 9). Section 3 was sub-divided from section 4 via a brick wall/pillars to support the upper floor.

Section 4 was the most complex of the five sections, located at the north end of the original building, containing both office space and a utility area. In total it contained 9 rooms (numbered 10-11, 15-17; not all rooms were accessible). Access to the section was from room 5 (section 3) into room 10 or from room 13 (section 5) into corridor 15. Room 10 was an open plan office space, similar to those found in sections 2 and 3. In the west wall was a set of double doors, one larger window and four arrow slit style windows (Pl. 11). At the far end of the room was a small store room. On the east side of the room was office 11, which extended into section 3 and had windows overlooking the covered area. Also on the east side of the section was corridor 15 (Pl. 12) which gave access to the utility area of the building. In the south-east corner of the building was a gents' toilets, possibly containing the original fittings. Adjacent to it was a ladies' toilet (room 16), again possibly containing the original fittings. Both rooms had the original three-panel internal doors to enter the rooms with slightly different, but still original, internal doors which may have contained glass panes originally (Pl. 13). Corridor 17 ran, internally, at a right angle to corridor 15 and gave access to an external door in the north side of the building, a boiler room (inaccessible) and a store room (inaccessible).

Section 5 was located within the northernmost portacabin extension and contained rooms 12-14. The portacabin was of the same modern style as section 1. Access was off corridor 15 within the original building or via two external doors within room 12. Room 12 was an office space, room 13 a small kitchen and room 14 a control room (Pl. 14).

The first floor (room 18) was accessed from room 5 (section 3). The stairs were fully enclosed and of concrete construction with a simple metal hand rail (Pl. 15). The first floor primarily consisted of one large room (Pl. 16) with narrow corridors panelled off along the east and west sides. In the north and south walls were two large, multi-paned windows. It was utilitarian in style with exposed steelwork and panelling. The floor was covered in vinyl floor tiles and at the north end was a small internal store room of later construction. Giving access to the narrow corridors along either side was a, probably, original four panel sliding door (Pl. 17). Within the centre of the room was a cast iron spiral staircase giving access to the flat roof. The stairs themselves (Pl. 18) were slightly ornate with concave and convex shapes beneath the open tread. The balusters had a square cross-section with a fleur-de-lis surmounted by a knob supporting a plain bannister rail. The entire staircase structure was painted grey.

Nursery Building (Figs 8–11)

The nursery building was originally two separate rectangular buildings; one aligned approximately east-west (Fig. 4; Pls 19-23) and a second aligned approximately north-south (Pls. 22, 24-26). They were both of similar construction with brick walls laid in stretcher bond, bonded with cement mortar. The brick sizes varied slightly with those of the east-west building measuring 220mm x 114mm x 71mm (8 ⁵/₈" x 4 ¹/₂" x 2 ³/₄") and those of the north-south aligned building measuring 220mm x 110mm x 63mm (8 ⁵/₈" x 4 ³/₈" x 2 ¹/₂"). In each corner was a brick pillar with a plain stone or imitation stone capital. Between the pillars, on the gable end a parapet was present. The two buildings had been joined with a modern infill section (from map evidence, post-dating 1994).

Both roofs were a slate covered, half-hipped roof with dormer windows on either side. The roofs extended beyond the long walls to form a covered canopy on all but the north side of the east-west aligned building. The roof was constructed of 2½" steel girders held together by steel plates which in turn supported wooden purlins. The majority of the roof construction, was however obscured by a suspended ceiling. The canopy had been infilled at the east end of the south side of the east-west building and along the east side of the north-south building to form an internal corridor. The infill was a combination of modern blockwork faced in bricks or timber cladding.

The windows had for the most part been blocked up or replaced, but a section of the original fenestration was present on the south side of the east-west building (Pl. 19). This consisted of a set of multi-paned windows, sub-divided into sections of eight panes (four over four), immediately below the roof line. Below each eight pane section was a pair of casement windows; one sub-divided into three sections (a horizontal sash, above three small panes, above a barred area), the other containing a lozenge shape sub-dividing the glass. On the north face and two of the gable ends were original two over two pane windows, arranged in pairs on the north face. Dormer windows were present on either side of the roof, and consisted of a pair of casement windows sub-divided into six panes, where they had not been blocked up.

Original doors were present only on the south gable end (Pl. 25). These consisted of a pair of two panel wooden doors containing six small glass panes in the upper section, arranged three-over-three, above a larger plain panel. A modern canopy had been erected at this end of the building, of steel and corrugated steel construction.

The East-West Aligned Building

Access to the building was through a door in the south-west corner, at its junction with the modern infill. This gave access to corridor 1, the former external covered area (Pl. 27). The floor throughout the building was carpeted and the infilled, concrete block walls painted white. Two doors were present in the southern wall giving external access. The former external elevation consisted of brick walling, beneath a white sill and windows, this was the same as that seen externally, where original windows were present. The majority of the lower windows had been blocked up, but the upper ones were still in their original state. Accessed from the corridor were rooms 2-6 (from west to east), these were all classrooms or used for naps. Rooms at the far west end of the building were not accessible. The rooms themselves consisted of original painted brickwork and more recent stud walling dividing the space (Pl. 28). Doors had presumably been inserted in place of windows through the former external elevation; these were all modern. Within room 6, at the east end of the building an inserted door into the north face had been subsequently blocked up again and the east end of the building altered. The two end windows had been bricked up and the door opening widened and the door replaced (Pl. 29).

Corridor 1 also gave access to the modern infill.

The Modern Infill

The modern infill was present between corridor 1 of the east-west aligned building and the north-south building, whose alignment it followed. The building consisted of corridor 7 (Pl. 30), located between corridor 1 (E-W building) and corridor 14 (N-S building) and rooms 8 and 9 accessed from the corridor. Rooms 8 and 9 were also interconnecting and consisted of an office (room 8) and a staff room (room 9) sub-divided to include toilets (Pl. 31). An external door was present in the eastern corridor wall.

The North-South Aligned Building

The north-south aligned building internally, is the same as the east-west aligned building with a number of rooms located off an infilled corridor on the eastern side of the building (corridor 14, Pl. 32)). Access to the building was from corridor 7 at the north end, various external doors within the eastern face and the original external door in the southern face. The building could be divided into 11 rooms with two additional extensions to the western face (numbered 10-21). Room functions varied with three classrooms, storage rooms, children's and staff toilets and a kitchen.

Within the children's toilets (room 10) (Pl. 33) located at the north end of the building it was possible to see the blocked windows and door of the original end of the building, though it was predominantly obscured by toilet stalls. Rooms 10-12 were for storage and were located one behind the other. Rooms 15, 17 and 18 were classrooms (Pl. 34), each with one or two storage cupboards at the south end and rooms 15 and 18 were extended to the west to include additional toilet facilities. Room 19 was the kitchen (Pl. 35), located at the far south end of the building. It had its own access through the southern end of the building (Pl. 36) and a storeroom and toilet (room 20). Room 21 was the staff toilet, also located at the southern end of the building.

Conclusion

Both the Copper King building and the two nursery buildings were built between 1911 and 1933, as shown by the map evidence. Externally the buildings had not been altered until relatively recently with the addition of two portacabin extensions to the Copper King building and the infilling of the space between the nursery buildings to make one building, as well as the infilling of the canopy areas on the south and east sides. Internally the buildings have been largely modernized, though a few original features were present within the Copper King building - toilet doors and some windows. Within the nursery building there were also some original windows and an original set of external doors at the south end of the building.

References

BGS, 1947, *British Geological Survey*, 1:63,360, Sheet 267, Drift Edition, Keyworth

NPPF 2012, *National Planning Policy Framework*, Dept Communities and Local Govt, London

RCHME, 1996, *Recording Historic Buildings: a descriptive specification*, 3rd edn, Roy Comm Hist Monuments (England), London

APPENDIX 1: Photographic Catalogue

A. Digital

<i>Cat. No.</i>	<i>Scales</i>	<i>Location</i>	<i>Direction</i>	<i>Description</i>
		Copper King		
1	1x1m, 1x2m	RM 1	W	General view to original building [PI. 6]
2	1x1m, 1x2m	RM 2	NW	General view to original building
3	1x1m, 1x2m	RM 3	NE	General view room 3, oblique (kitchen)
4	1x1m, 1x2m	RM 4	NE	General view room 4, oblique (blocked windows)
5	1x1m, 1x2m	RM 4	SE	General view room 4, oblique (blocked windows) [PI. 8]
6	1x1m, 1x2m	RM 4	NW	General view room 4, oblique (to windows) [PI. 7]
7	1x1m, 1x2m	RM 4	SW	General view room 4, oblique (to windows)
8	1x1m, 1x2m	RM 5	NE	General view to offices [PI. 9]
9	1x1m, 1x2m	RM 5	NW	General view to windows
10	1x1m, 1x2m	RM 5	SW	General view to windows
11	1x1m, 1x2m	RM 6	SE	General view to windows [PI. 10]
12	1x1m, 1x2m	RM 7	SE	General view to windows [PI. 12]
13	1x1m, 1x2m	RM 8	N	General view to internal partition
14	1x1m, 1x2m	RM 9	E	Conference room
15	1x1m, 1x2m	RM 10	W	General view to windows [PI. 11]
16	1x1m, 1x2m	RM 10	N	General view
17	1x1m, 1x2m	RM 11	SE	General view to windows
18	1x1m, 1x2m	RM 12	E	General view to doors
19	1x1m, 1x2m	RM 13	N	Kitchen
20	1x1m, 1x2m	RM 14	SE	General view, oblique [PI. 14]
21	1x1m, 1x2m	RM 15	N	View to original toilet door
22	1x1m, 1x2m	RM 16	NW	Toilet door and sink (Ladies) [PI. 13]
23	1x2m	RM 16	N	General view to toilet & window (Ladies)
24	1x1m, 1x2m	RM 17	W	General view to windows
25	1x2m	RM 18	E	Stairs [PI. 15]
26	1x1m, 1x2m	RM 18	N	General view to windows [PI. 16]
27	1x1m, 1x2m	RM 18	NW	Spiral staircase
28	N/A	RM 18	NNE	General view of exterior wall (oblique)
29	1x1m, 1x2m	RM 18	E	Original sliding door [PI. 17]
30	1x1m, 1x2m	RM 18	NE	Oblique view of internal wall & structure
31	N/A	RM 18	SW	Roof structure
32	N/A	RM 18	W	Detail of spiral staircase [PI. 18]
33	1x1m, 1x2m	EXT.	W	Overview of building [PI. 1]
34	N/A	EXT.	NW	1 st floor detail [PI. 5]
35	1x1m, 1x2m	EXT.	NW	Oblique view of ground floor
36	1x1m, 1x2m	EXT.	NE	Oblique view of South wall [PI. 2]
37	N/A	EXT.	NE	Oblique view of upper floor
38	1x1m, 1x2m	EXT.	NE	Oblique view of building [PI.3]
39	1x1m, 1x2m	EXT.	SE	Oblique view of building
40	N/A	EXT.	SE	Oblique view of 1 st floor
41	1x1m, 1x2m	EXT.	SW	Oblique view, North end of building [PI. 4]
		Nursery		
42	1x1m, 1x2m	EXT.	NE	Oblique view of West elevation [PI. 24]
43	1x1m, 1x2m	EXT.	N	South elevation (N – S building) [PI. 25]
44	1x1m, 1x2m	EXT.	N	South elevation (E – W building) [PI. 19]
45	1x1m, 1x2m	EXT.	E	West elevation (E – W building) [PI. 20]
46	1x1m, 1x2m	EXT.	S	North elevation [PI. 21]
47	1x1m, 1x2m	EXT.	W	East elevation (N – S building) [PI. 26]
48	1x1m, 1x2m	EXT.	NW	East & South elevation, oblique [PI. 22]
49	1x1m, 1x2m	EXT.	NW	East elevation (E – W building) [PI. 23]
50	1x1m, 1x2m	RM 1	E	View along corridor [PI. 27]
51	1x1m, 1x2m	RM 2	NE	General view to windows [PI. 28]
52	1x1m, 1x2m	RM 3	SE	General view to door
53	1x1m, 1x2m	RM 4	NE	General view to windows
54	1x1m, 1x2m	RM 5	SE	General view to internal windows
55	1x1m, 1x2m	RM 6	SE	General view to internal windows [PI. 29]
56	1x1m, 1x2m	RM 7	S	View along corridor [PI. 30]
57	1x1m, 1x2m	RM 8	NW	General view to window
58	1x1m, 1x2m	RM 9	SE	General view to toilets [PI. 31]
59	1x1m, 1x2m	RM 10	NW	Toilet view old wall [PI. 33]
60	1x1m, 1x2m	RM11 - 13	W	General view to windows
61	1x1m, 1x2m	RM 14	S	View along corridor [PI. 32]
62	1x1m, 1x2m	RM 15	SE	General view to internal windows [PI. 34]
63	1x1m, 1x2m	RM 16	SW	View to room 16 – Nappy changing
64	1x1m, 1x2m	RM 17	S	General view to internal wall & cupboard
65	1x1m, 1x2m	RM 18	NW	General view to internal wall & toilet

<i>Cat. No.</i>	<i>Scales</i>	<i>Location</i>	<i>Direction</i>	<i>Description</i>
66	1x1m, 1x2m	RM 19	NW	Kitchen [Pl. 35]
67	N/A	RM 20	SE	Roof structure
68	1x1m, 1x2m	RM 19	S	General view to external doors [Pl. 36]
69	1x1m, 1x2m	RM 21	SW	Staff toilet

B. Colour Prints

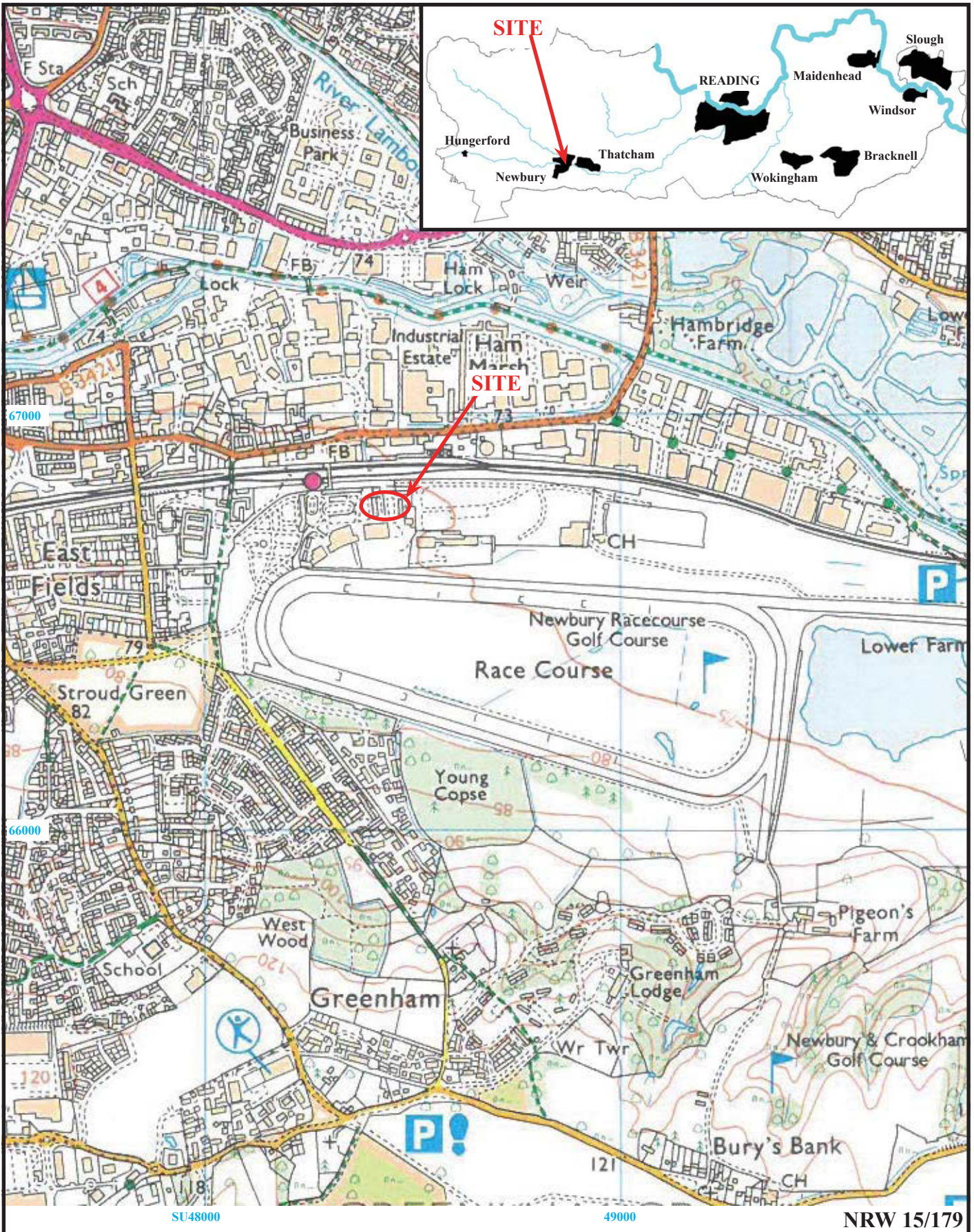
<i>Cat. No.</i>	<i>Scales</i>	<i>Location</i>	<i>Direction</i>	<i>Description</i>
		Copper King		
1	1x1m, 1x2m	RM 1	W	General view to original building
2	1x1m, 1x2m	RM 2	NW	General view to original building
3	1x1m, 1x2m	RM 3	NE	General view room 3, oblique (kitchen)
4	1x1m, 1x2m	RM 4	NE	General view room 4, oblique (blocked windows)
5	1x1m, 1x2m	RM 4	SE	General view room 4, oblique (blocked windows)
6	1x1m, 1x2m	RM 4	NW	General view room 4, oblique (to windows)
7	1x1m, 1x2m	RM 4	SW	General view room 4, oblique (to windows)
8	1x1m, 1x2m	RM 5	NE	General view to offices
9	1x1m, 1x2m	RM 5	NW	General view to windows
10	1x1m, 1x2m	RM 5	SW	General view to windows
11	1x1m, 1x2m	RM 6	SE	General view to windows
12	1x1m, 1x2m	RM 7	SE	General view to windows
13	1x1m, 1x2m	RM 8	N	General view to internal partition
14	1x1m, 1x2m	RM 9	E	Conference room
15	1x1m, 1x2m	RM 10	W	General view to windows
16	1x1m, 1x2m	RM 10	N	General view
17	1x1m, 1x2m	RM 11	SE	General view to windows
18	1x1m, 1x2m	RM 12	E	General view to doors
19	1x1m, 1x2m	RM 13	N	Kitchen
20	1x1m, 1x2m	RM 14	SE	General view, oblique
21	1x1m, 1x2m	RM 15	N	View to original toilet door
22	1x1m, 1x2m	RM 16	NW	Toilet door and sink (Ladies)
23	1x2m	RM 16	N	General view to toilet & window (Ladies)
24	1x1m, 1x2m	RM 17	W	General view to windows
25	1x2m	RM 18	E	Stairs
26	1x1m, 1x2m	RM 18	N	General view to windows
27	1x1m, 1x2m	RM 18	NW	Spiral staircase
28	N/A	RM 18	NNE	General view of exterior wall (oblique)
29	1x1m, 1x2m	RM 18	E	Original sliding door
30	1x1m, 1x2m	RM 18	NE	Oblique view of internal wall & structure
31	N/A	RM 18	SW	Roof structure
32	N/A	RM 18	W	Detail of spiral staircase
33	1x1m, 1x2m	EXT.	W	Overview of building
34	N/A	EXT.	NW	1 st floor detail
35	1x1m, 1x2m	EXT.	NW	Oblique view of ground floor
36	1x1m, 1x2m	EXT.	NE	Oblique view of South wall
37	N/A	EXT.	NE	Oblique view of upper floor
38	1x1m, 1x2m	EXT.	NE	Oblique view of building
39	1x1m, 1x2m	EXT.	SE	Oblique view of building
40	N/A	EXT.	SE	Oblique view of 1 st floor
41	1x1m, 1x2m	EXT.	SW	Oblique view, North end of building
		Nursery		
42	1x1m, 1x2m	EXT.	NE	Oblique view of West elevation
43	1x1m, 1x2m	EXT.	N	South elevation (N – S building)
44	1x1m, 1x2m	EXT.	N	South elevation (E – W building)
45	1x1m, 1x2m	EXT.	E	West elevation (E – W building)
46	1x1m, 1x2m	EXT.	S	North elevation
47	1x1m, 1x2m	EXT.	W	East elevation (N – S building)
48	1x1m, 1x2m	EXT.	NW	East & South elevation, oblique
49	1x1m, 1x2m	EXT.	NW	East elevation (E – W building)
50	1x1m, 1x2m	RM 1	E	View along corridor
51	1x1m, 1x2m	RM 2	NE	General view to windows
52	1x1m, 1x2m	RM 3	SE	General view to door
53	1x1m, 1x2m	RM 4	NE	General view to windows
54	1x1m, 1x2m	RM 5	SE	General view to internal windows
55	1x1m, 1x2m	RM 6	SE	General view to internal windows
56	1x1m, 1x2m	RM 7	S	View along corridor
57	1x1m, 1x2m	RM 8	NW	General view to window
58	1x1m, 1x2m	RM 9	SE	General view to toilets
59	1x1m, 1x2m	RM 10	NW	Toilet view old wall

<i>Cat. No.</i>	<i>Scales</i>	<i>Location</i>	<i>Direction</i>	<i>Description</i>
60	1x1m, 1x2m	RM11 - 13	W	General view to windows
61	1x1m, 1x2m	RM 14	S	View along corridor
62	1x1m, 1x2m	RM 15	SE	General view to internal windows
63	1x1m, 1x2m	RM 16	SW	View to room 16 – Nappy changing
64	1x1m, 1x2m	RM 17	S	General view to internal wall & cupboard
65	1x1m, 1x2m	RM 18	NW	General view to internal wall & toilet
66	1x1m, 1x2m	RM 19	NW	Kitchen
67	N/A	RM 20	SE	Roof structure
68	1x1m, 1x2m	RM 19	S	General view to external doors
69	1x1m, 1x2m	RM 21	SW	Staff toilet

C. Monochrome Images

<i>Cat. No.</i>	<i>Scales</i>	<i>Location</i>	<i>Direction</i>	<i>Description</i>
		Copper King		
1	1x1m, 1x2m	RM 1	W	General view to original building
2	1x1m, 1x2m	RM 2	NW	General view to original building
3	1x1m, 1x2m	RM 3	NE	General view room 3, oblique (kitchen)
4	1x1m, 1x2m	RM 4	NE	General view room 4, oblique (blocked windows)
5	1x1m, 1x2m	RM 4	SE	General view room 4, oblique (blocked windows)
6	1x1m, 1x2m	RM 4	NW	General view room 4, oblique (to windows)
7	1x1m, 1x2m	RM 4	SW	General view room 4, oblique (to windows)
8	1x1m, 1x2m	RM 5	NE	General view to offices
9	1x1m, 1x2m	RM 5	NW	General view to windows
10	1x1m, 1x2m	RM 5	SW	General view to windows
11	1x1m, 1x2m	RM 6	SE	General view to windows
12	1x1m, 1x2m	RM 7	SE	General view to windows
13	1x1m, 1x2m	RM 8	N	General view to internal partition
14	1x1m, 1x2m	RM 9	E	Conference room
15	1x1m, 1x2m	RM 10	W	General view to windows
16	1x1m, 1x2m	RM 10	N	General view
17	1x1m, 1x2m	RM 11	SE	General view to windows
18	1x1m, 1x2m	RM 12	E	General view to doors
19	1x1m, 1x2m	RM 13	N	Kitchen
20	1x1m, 1x2m	RM 14	SE	General view, oblique
21	1x1m, 1x2m	RM 15	N	View to original toilet door
22	1x1m, 1x2m	RM 16	NW	Toilet door and sink (Ladies)
23	1x2m	RM 16	N	General view to toilet & window (Ladies)
24	1x1m, 1x2m	RM 17	W	General view to windows
25	1x2m	RM 18	E	Stairs
26	1x1m, 1x2m	RM 18	N	General view to windows
27	1x1m, 1x2m	RM 18	NW	Spiral staircase
28	N/A	RM 18	NNE	General view of exterior wall (oblique)
29	1x1m, 1x2m	RM 18	E	Original sliding door
30	1x1m, 1x2m	RM 18	NE	Oblique view of internal wall & structure
31	N/A	RM 18	SW	Roof structure
32	N/A	RM 18	W	Detail of spiral staircase
33	1x1m, 1x2m	EXT.	W	Overview of building
34	N/A	EXT.	NW	1 st floor detail
35	1x1m, 1x2m	EXT.	NW	Oblique view of ground floor
36	1x1m, 1x2m	EXT.	NE	Oblique view of South wall
37	N/A	EXT.	NE	Oblique view of upper floor
38	1x1m, 1x2m	EXT.	NE	Oblique view of building
39	1x1m, 1x2m	EXT.	SE	Oblique view of building
40	N/A	EXT.	SE	Oblique view of 1 st floor
41	1x1m, 1x2m	EXT.	SW	Oblique view, North end of building
		Nursery		
42	1x1m, 1x2m	EXT.	NE	Oblique view of West elevation
43	1x1m, 1x2m	EXT.	N	South elevation (N – S building)
44	1x1m, 1x2m	EXT.	N	South elevation (E – W building)
45	1x1m, 1x2m	EXT.	E	West elevation (E – W building)
46	1x1m, 1x2m	EXT.	S	North elevation
47	1x1m, 1x2m	EXT.	W	East elevation (N – S building)
48	1x1m, 1x2m	EXT.	NW	East & South elevation, oblique
49	1x1m, 1x2m	EXT.	NW	East elevation (E – W building)
50	1x1m, 1x2m	RM 1	E	View along corridor
51	1x1m, 1x2m	RM 2	NE	General view to windows
52	1x1m, 1x2m	RM 3	SE	General view to door
53	1x1m, 1x2m	RM 4	NE	General view to windows

<i>Cat. No.</i>	<i>Scales</i>	<i>Location</i>	<i>Direction</i>	<i>Description</i>
54	1x1m, 1x2m	RM 5	SE	General view to internal windows
55	1x1m, 1x2m	RM 6	SE	General view to internal windows
56	1x1m, 1x2m	RM 7	S	View along corridor
57	1x1m, 1x2m	RM 8	NW	General view to window
58	1x1m, 1x2m	RM 9	SE	General view to toilets
59	1x1m, 1x2m	RM 10	NW	Toilet view old wall
60	1x1m, 1x2m	RM11 - 13	W	General view to windows
61	1x1m, 1x2m	RM 14	S	View along corridor
62	1x1m, 1x2m	RM 15	SE	General view to internal windows
63	1x1m, 1x2m	RM 16	SW	View to room 16 – Nappy changing
64	1x1m, 1x2m	RM 17	S	General view to internal wall & cupboard
65	1x1m, 1x2m	RM 18	NW	General view to internal wall & toilet
66	1x1m, 1x2m	RM 19	NW	Kitchen
67	N/A	RM 20	SE	Roof structure
68	1x1m, 1x2m	RM 19	S	General view to external doors
69	1x1m, 1x2m	RM 21	SW	Staff toilet

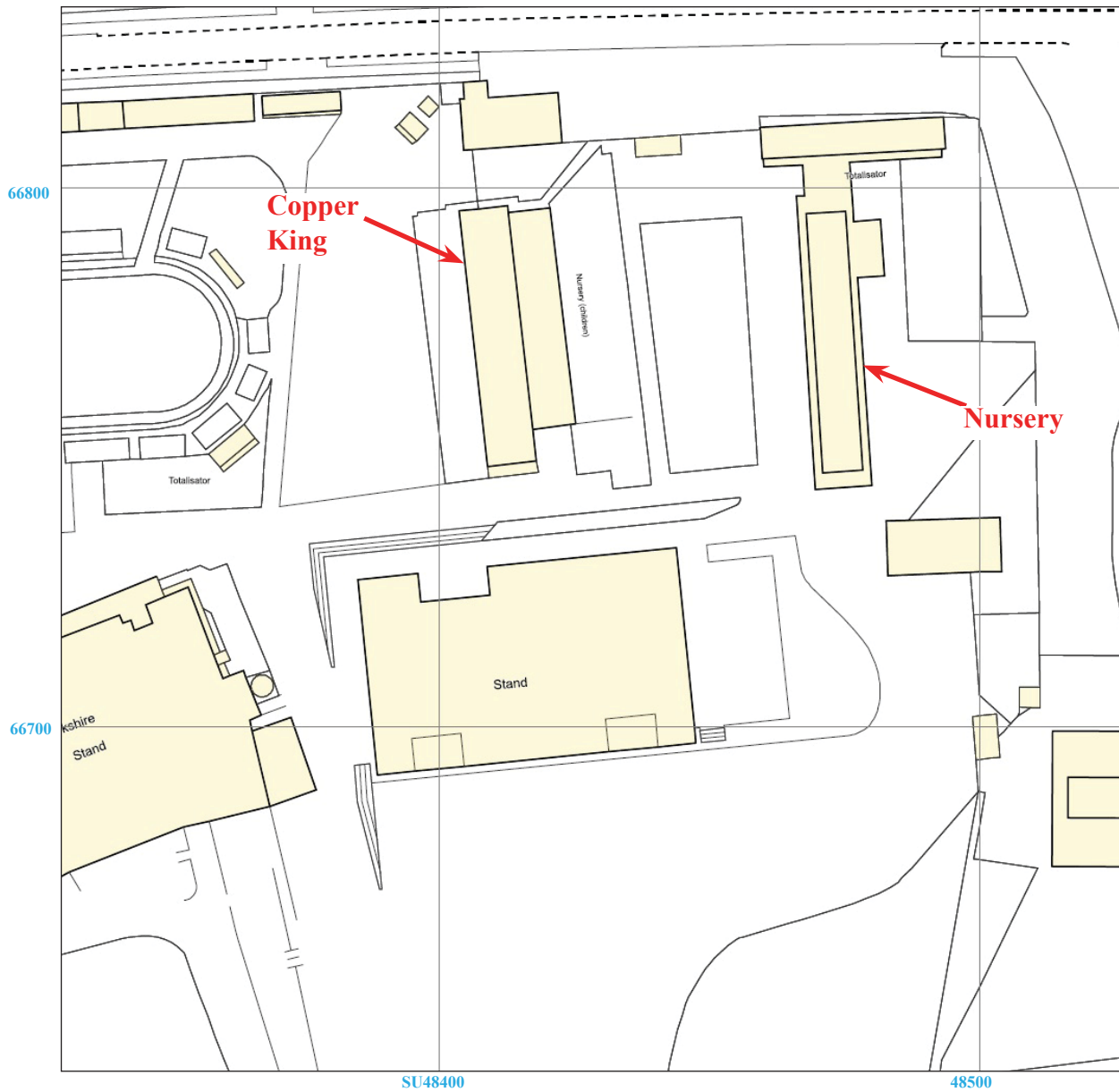


**Newbury Racecourse, Newbury,
West Berkshire, 2015
Building Recording**

Figure 1. Location of site within Newbury and Berkshire.

Reproduced from Ordnance Survey Explorer 158 at 1:12500
Ordnance Survey Licence 100025880

THAMES VALLEY
ARCHAEOLOGICAL
SERVICES



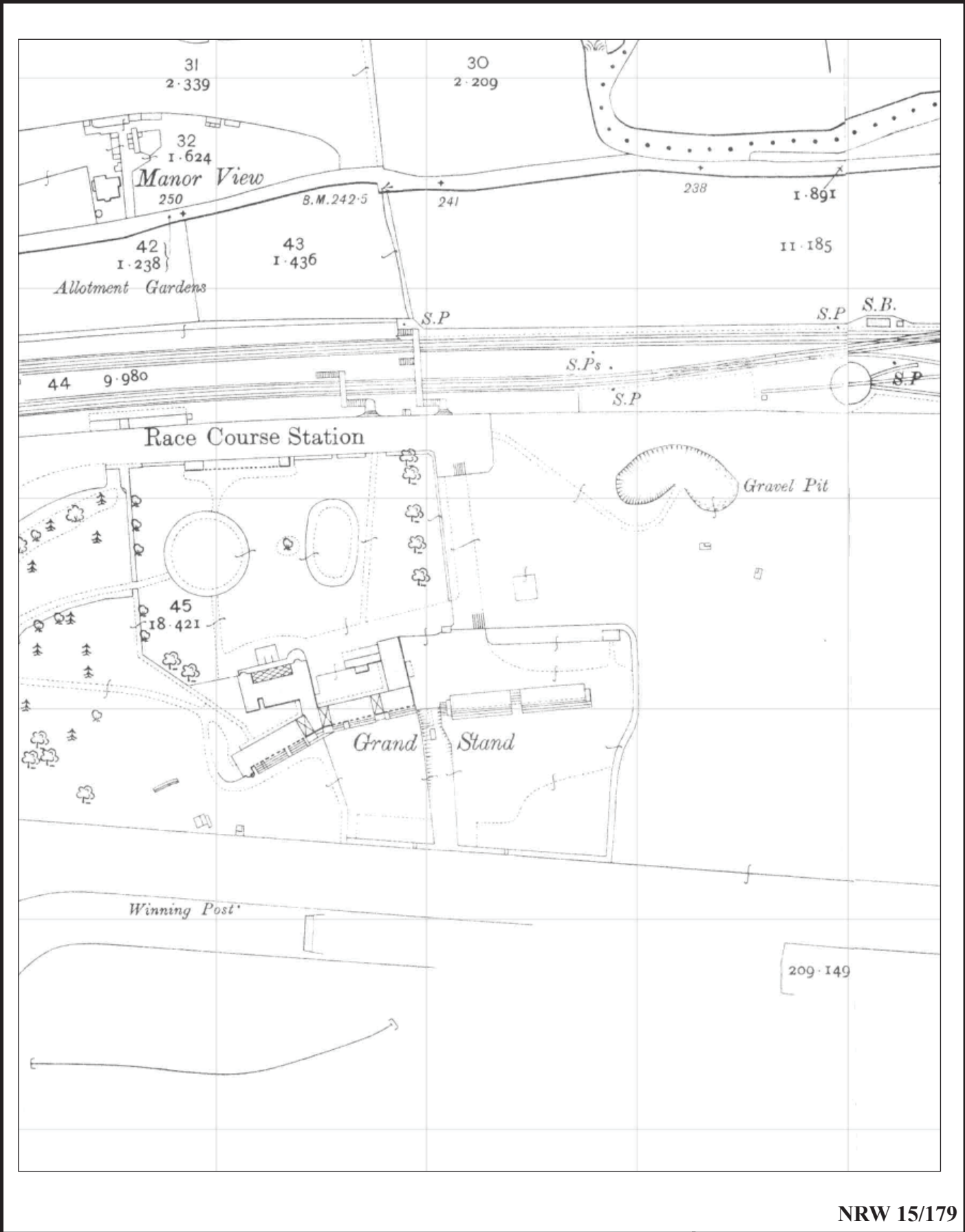
NRW 15/179



**Newbury Racecourse, Newbury
West Berkshire, 2015
Building Recording**
Figure 2. Detailed location of site.

Reproduced from Ordnance Survey Digital Mapping under licence.
Crown copyright reserved. Scale 1:1250



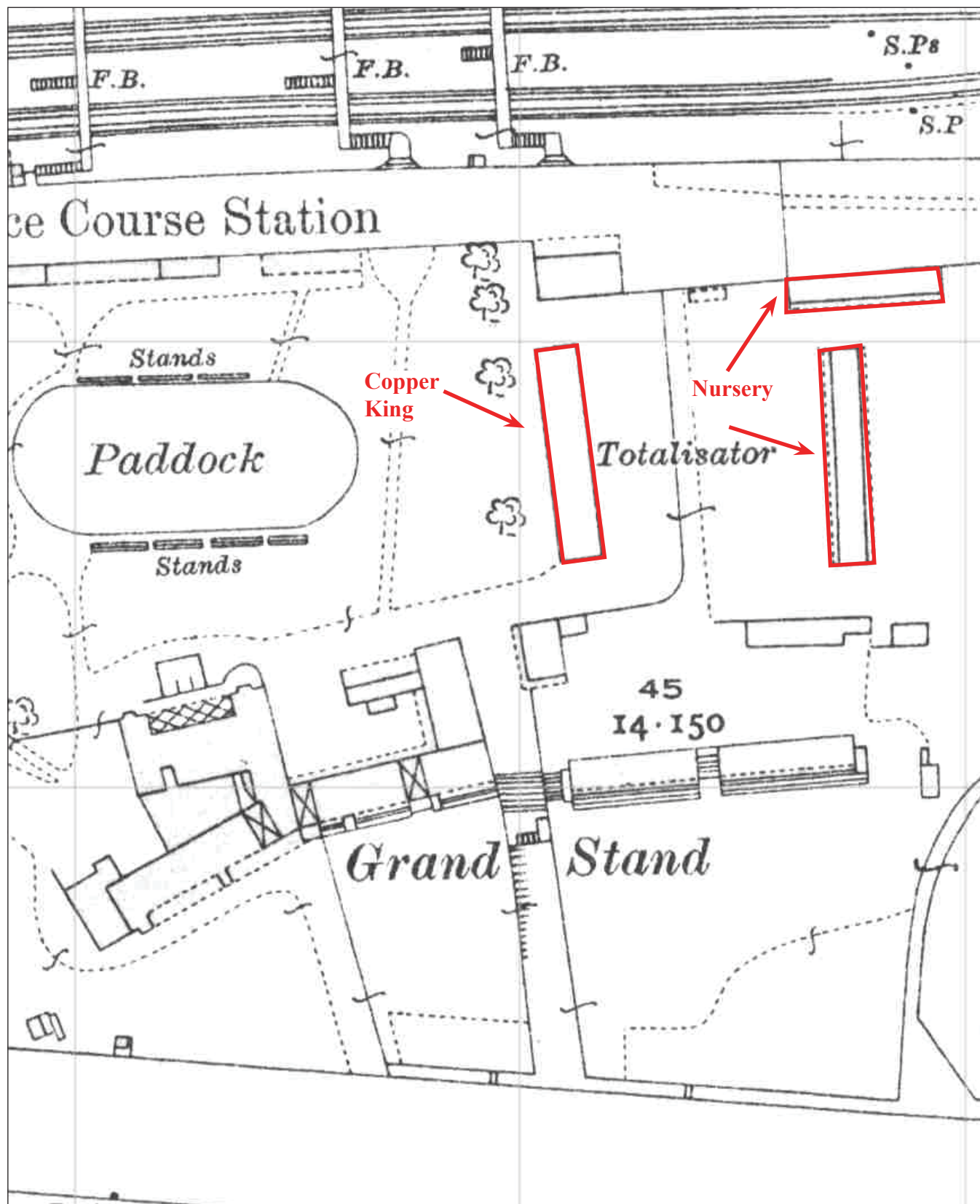


NRW 15/179



**Newbury Racecourse, Newbury
West Berkshire, 2015
Building Recording**
Figure 3. Ordnance Survey 1911.

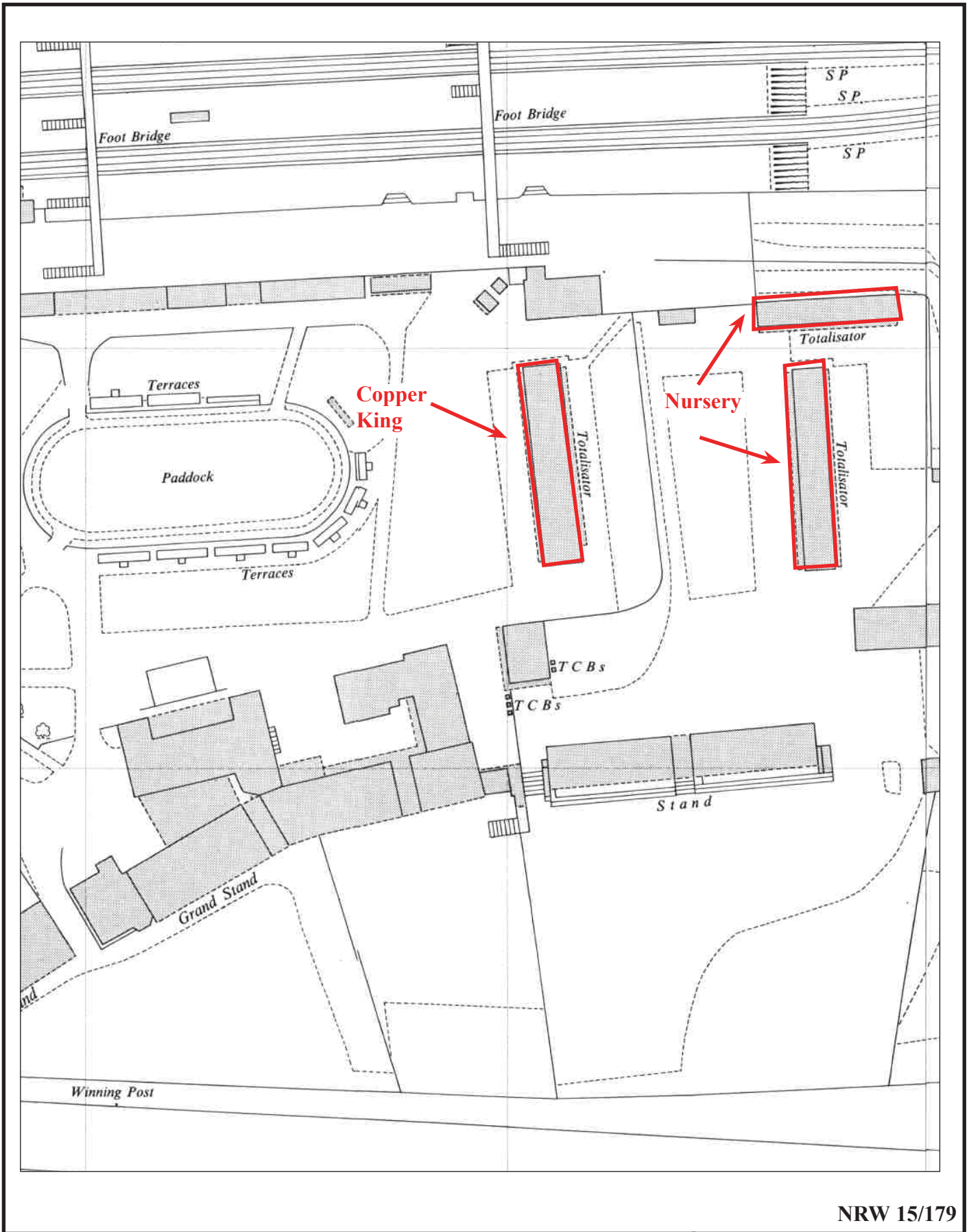




NRW 15/179



Newbury Racecourse, Newbury
West Berkshire, 2015
Building Recording
Figure 4. Ordnance Survey 1933.

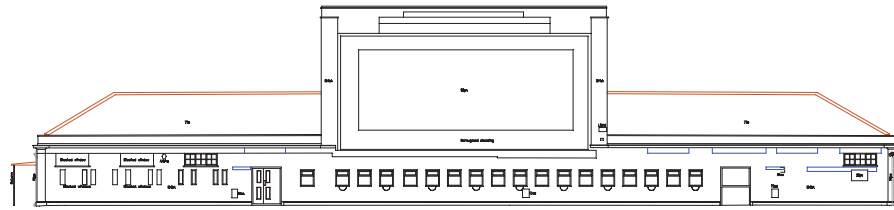


NRW 15/179

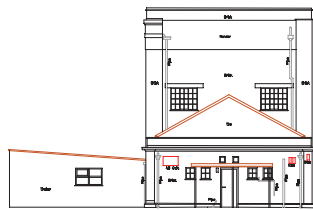


Newbury Racecourse, Newbury
 West Berkshire, 2015
 Building Recording
 Figure 5. Ordnance Survey 1967.

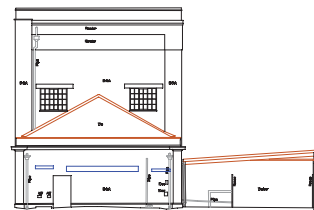




Front, east facing elevation

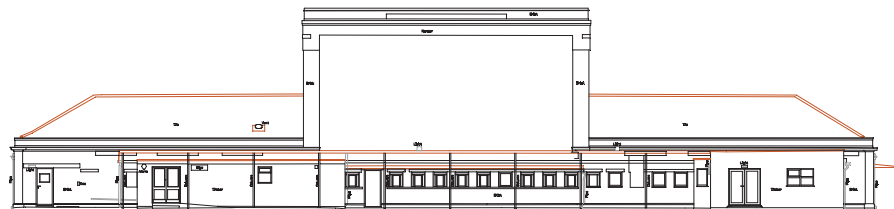


North facing elevation



South facing elevation

Side elevations



Rear, west facing elevation

NRW 15/179

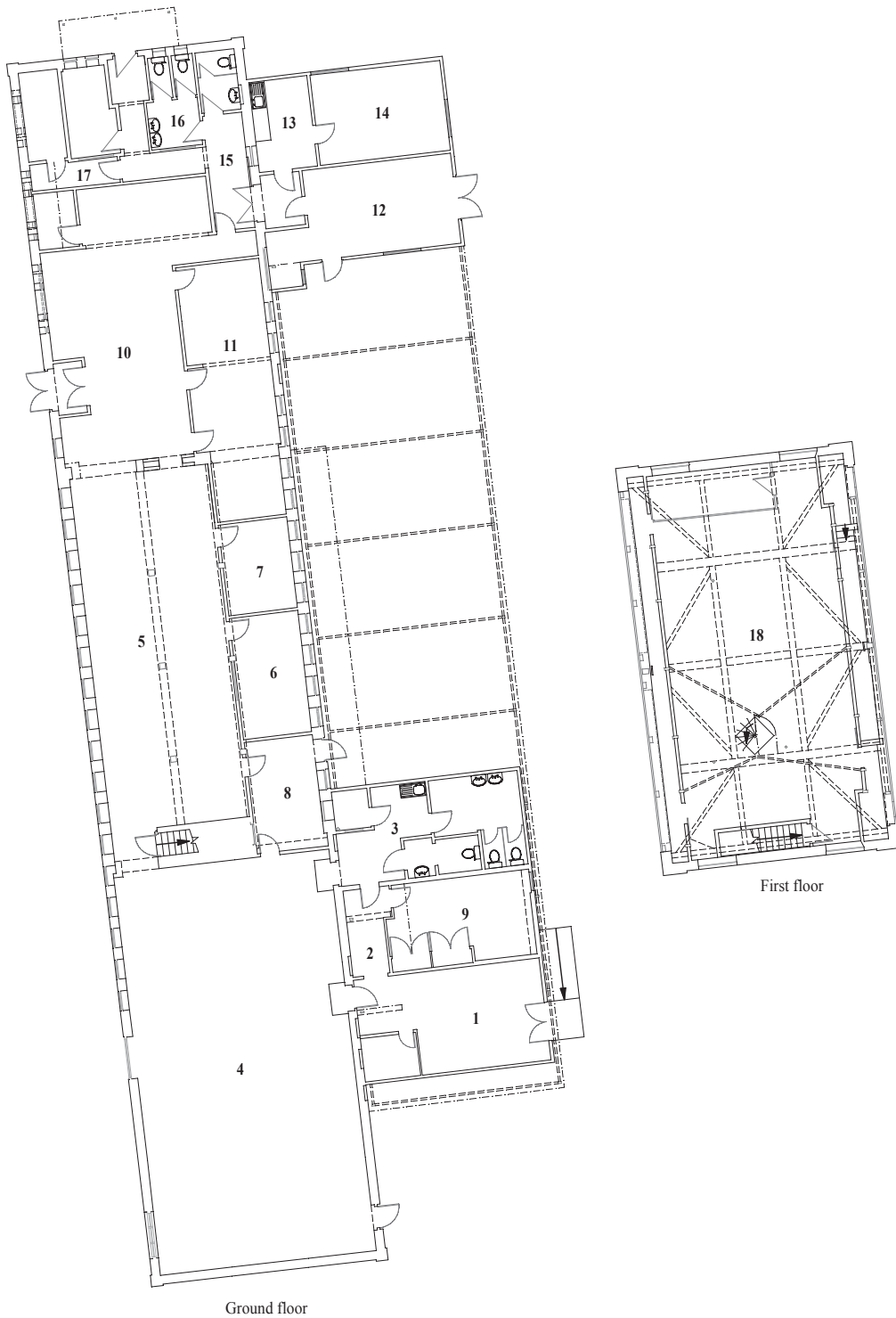


**Newbury Racecourse, Newbury,
West Berkshire, 2015
Building Recording**

Figure 6. Copper King Building Elevations.



THAMES VALLEY
ARCHAEOLOGICAL
SERVICES



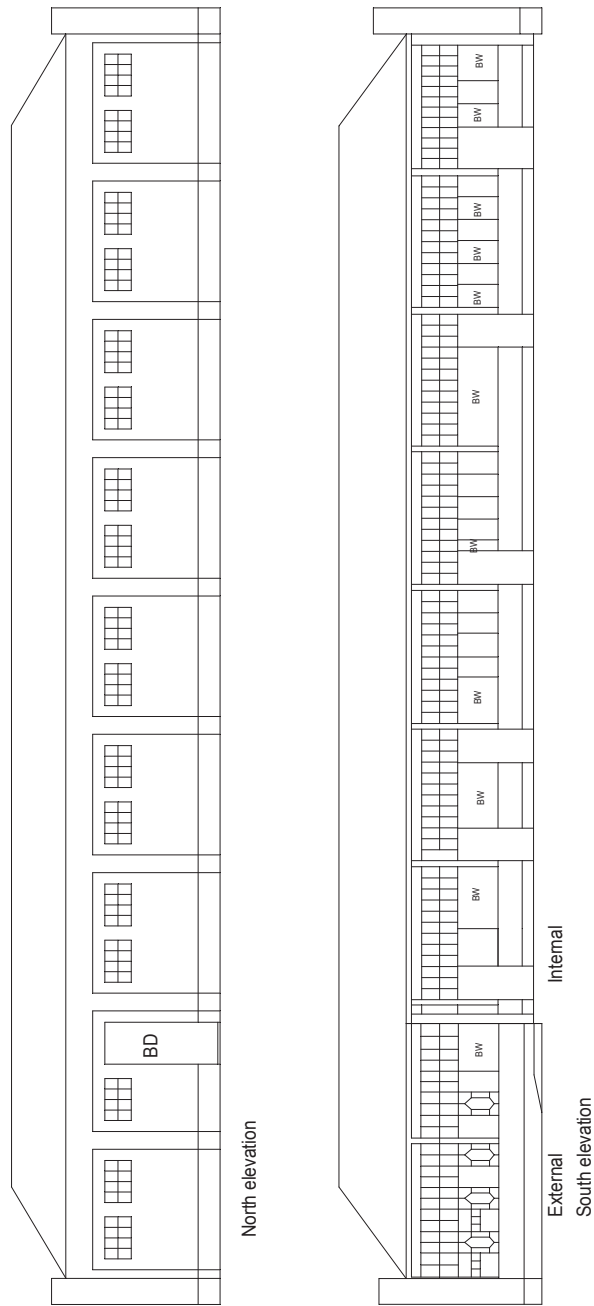
NRW 15/179

**Newbury Racecourse, Newbury,
West Berkshire, 2015
Building Recording**

Figure 7. Copper King Building plans showing room numbers.



THAMES VALLEY
ARCHAEOLOGICAL
SERVICES

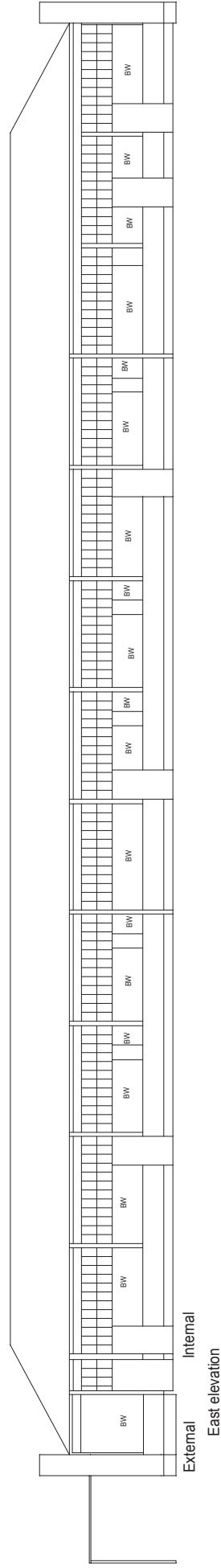
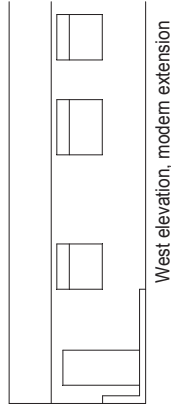
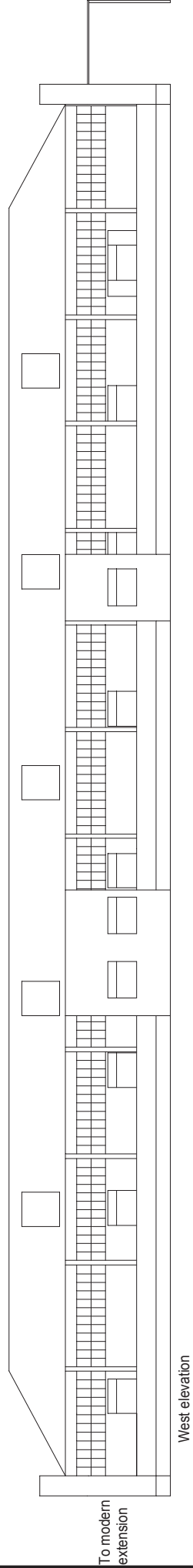
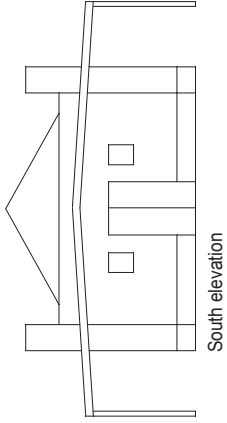


NRW 15/179

**Newbury Racecourse, Newbury,
West Berkshire, 2015
Building Recording**

Figure 8. Nursery Building Elevations (East-West aligned building)



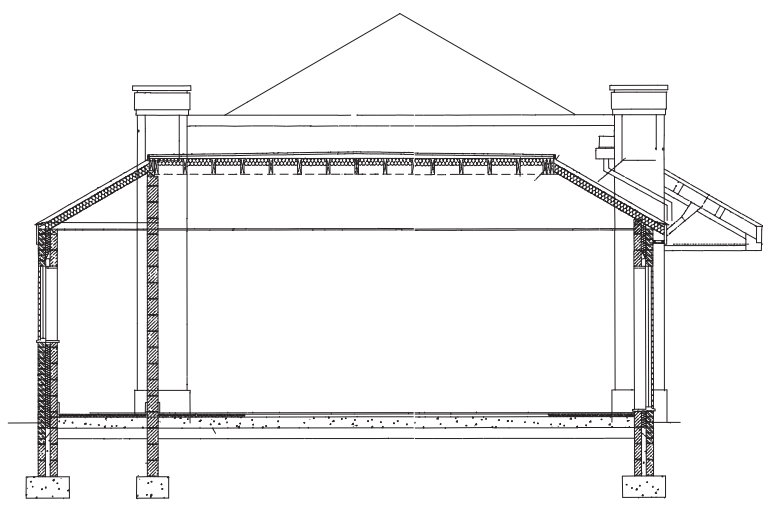


NRW 15/179

**Newbury Racecourse, Newbury,
West Berkshire, 2015
Building Recording**

Figure 9. Nursery Building Elevations (North-South aligned building)





NRW 15/179

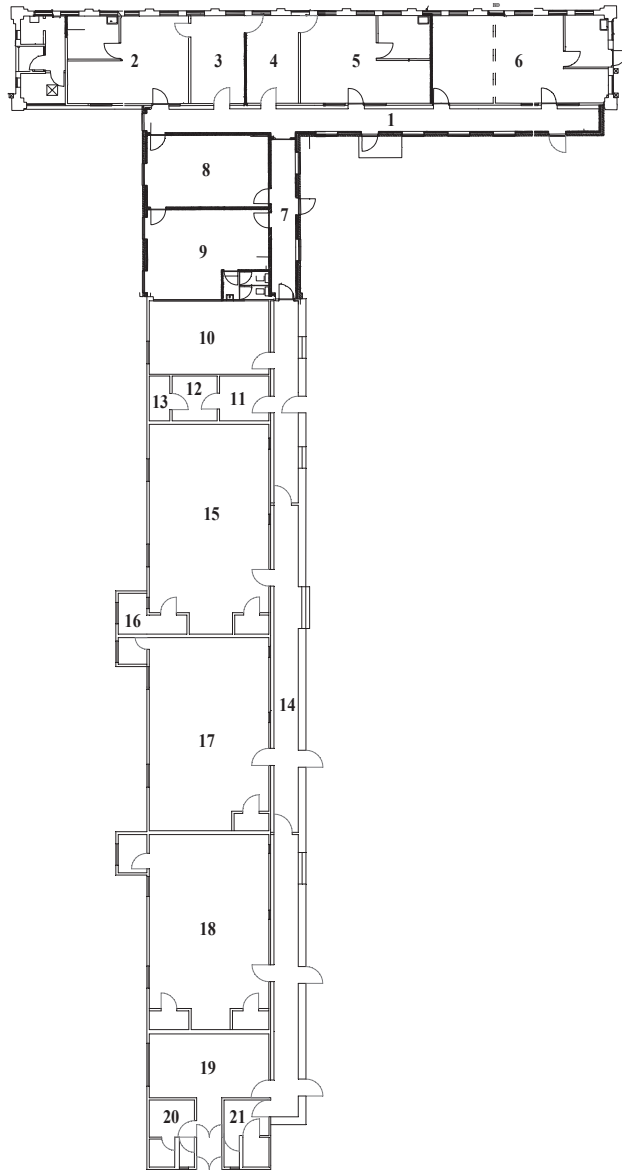


**Newbury Racecourse, Newbury,
West Berkshire, 2015
Building Recording**

Figure 10. Cross section of Nursery building.



THAMES VALLEY
ARCHAEOLOGICAL
SERVICES



NRW 15/179

**Newbury Racecourse, Newbury,
West Berkshire, 2015
Building Recording**

Figure 11. Plan of Nursery showing room numbers.



THAMES VALLEY
ARCHAEOLOGICAL
SERVICES



Plate 1. Overview of building, looking west Scales: 2m and 1m.



Plate 2. Oblique view of south wall, looking north-east, Scales: 2m and 1m.



Plate 3. Oblique view of building, looking north-east, Scales: 2m and 1m.



Plate 4. Oblique view, north end of building, looking south-west, Scales: 2m and 1m.

NRW 15/179

**Newbury Racecourse, Newbury,
West Berkshire, 2015
Building Recording
Plates 1 - 4.**

THAMES VALLEY
ARCHAEOLOGICAL
SERVICES



Plate 5. 1st floor detail, looking north-west.



Plate 6. Room 1: general view to original building, looking west, Scales: 2m and 1m.



Plate 7. General view room 4, oblique (to windows), looking north-west, Scales: 2m and 1m.



Plate 8. General view room 4, oblique (blocked windows), looking south-east, Scales: 2m and 1m.

NRW 15/179

**Newbury Racecourse, Newbury,
West Berkshire, 2015
Building Recording
Plates 5 - 8.**

THAMES VALLEY
ARCHAEOLOGICAL
SERVICES



Plate 9. Room 6: general view to offices, looking north-east, Scales: 2m and 1m.



Plate 10. Room 6: general view to windows, looking south-east, Scales: 2m and 1m.



Plate 11. Room 10: general view to windows, looking west, Scales: 2m and 1m.



Plate 12. Room 15: view to original toilet door, looking north, Scales: 2m and 1m.

NRW 15/179

**Newbury Racecourse, Newbury,
West Berkshire, 2015
Building Recording
Plates 9 - 12.**

THAMES VALLEY
ARCHAEOLOGICAL
SERVICES



Plate 13. Room 16: toilet door and sink (Ladies), looking north-west, Scales: 2m and 1m.



Plate 14. Room 14: general view, oblique, looking south-east, Scales: 2m and 1m.



Plate 15. Room 18: stairs, looking east, Scale: 2m.



Plate 16. Room 18: general view to windows, looking north, Scales: 2m and 1m.

NRW 15/179

**Newbury Racecourse, Newbury,
West Berkshire, 2015
Building Recording
Plates 13 - 16.**

THAMES VALLEY
ARCHAEOLOGICAL
SERVICES



Plate 17. Room 18: original sliding door, looking east,
Scales: 2m and 1m.



Plate 18. Room 18: detail of spiral staircase, looking west.



Plate 19. Nursery: south elevation (E – W building),
looking east, Scales: 2m and 1m.



Plate 20. Nursery: west elevation (E – W building),
looking east, Scales: 2m and 1m.

NRW 15/179

**Newbury Racecourse, Newbury,
West Berkshire, 2015
Building Recording**
Plates 17 - 20.

THAMES VALLEY
ARCHAEOLOGICAL
SERVICES



Plate 21. Nursery: north elevation, looking south, Scales: 2m and 1m.



Plate 22. Nursery: east and south elevation, oblique, looking north-west, Scales: 2m and 1m.



Plate 23. Nursery: east elevation (E – W building), looking north-west, Scales: 2m and 1m.



Plate 24. Nursery: oblique view of West elevation, looking north-east, Scales: 2m and 1m.

NRW 15/179

**Newbury Racecourse, Newbury,
West Berkshire, 2015
Building Recording
Plates 21 - 24.**

THAMES VALLEY
ARCHAEOLOGICAL
SERVICES



Plate 25. Nursery: south elevation (N – S building), looking north, Scales: 2m and 1m.



Plate 26. Nursery: east elevation (N – S building), looking west, Scales: 2m and 1m.



Plate 27. Nursery Room 1: view along corridor, looking east, Scales: 2m and 1m.



Plate 28. Nursery Room 2: general view to windows, looking north-east, Scales: 2m and 1m.

NRW 15/179

**Newbury Racecourse, Newbury,
West Berkshire, 2015
Building Recording
Plates 25 - 28.**

THAMES VALLEY
ARCHAEOLOGICAL
SERVICES



Plate 29. Nursery Room 6: general view to internal windows, looking south-east, Scales: 2m and 1m.



Plate 30. Nursery Room 7: view along corridor, looking south, Scales: 2m and 1m.



Plate 31. Nursery Room 9: general view to toilets, looking south-east, Scales: 2m and 1m.



Plate 32. Nursery Room 14: view along corridor, looking south, Scales: 2m and 1m.

NRW 15/179

**Newbury Racecourse, Newbury,
West Berkshire, 2015
Building Recording
Plates 29 - 32.**

THAMES VALLEY
ARCHAEOLOGICAL
SERVICES



Plate 33. Nursery Room 10: toilet view old wall, looking north-west, Scales: 2m and 1m.



Plate 34. Nursery Room 15: general view to internal windows, looking south-east, Scales: 2m and 1m.



Plate 35. Nursery Room 19: kitchen, looking north-west, Scales: 2m and 1m.



Plate 36. Nursery Room 19: general view to external doors, looking south, Scales: 2m and 1m.

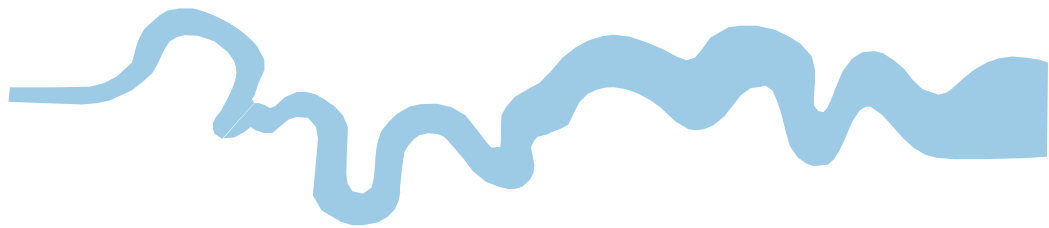
NRW 15/179

**Newbury Racecourse, Newbury,
West Berkshire, 2015
Building Recording
Plates 33 - 36.**

THAMES VALLEY
ARCHAEOLOGICAL
SERVICES

TIME CHART

	Calendar Years
Modern _____	AD 1901
Victorian _____	AD 1837
Post Medieval _____	AD 1500
Medieval _____	AD 1066
Saxon _____	AD 410
Roman _____	AD 43
Iron Age _____	BC/AD 750 BC
Bronze Age: Late -----	1300 BC
Bronze Age: Middle -----	1700 BC
Bronze Age: Early -----	2100 BC
Neolithic: Late	3300 BC
Neolithic: Early	4300 BC
Mesolithic: Late	6000 BC
Mesolithic: Early	10000 BC
Palaeolithic: Upper	30000 BC
Palaeolithic: Middle	70000 BC
Palaeolithic: Lower	2,000,000 BC
↓	↓



**Thames Valley Archaeological Services Ltd,
47-49 De Beauvoir Road, Reading,
Berkshire, RG1 5NR**

**Tel: 0118 9260552
Fax: 0118 9260553
Email: tvas@tvas.co.uk
Web: www.tvas.co.uk**