



Fig.21: Plan showing [208] and [273]

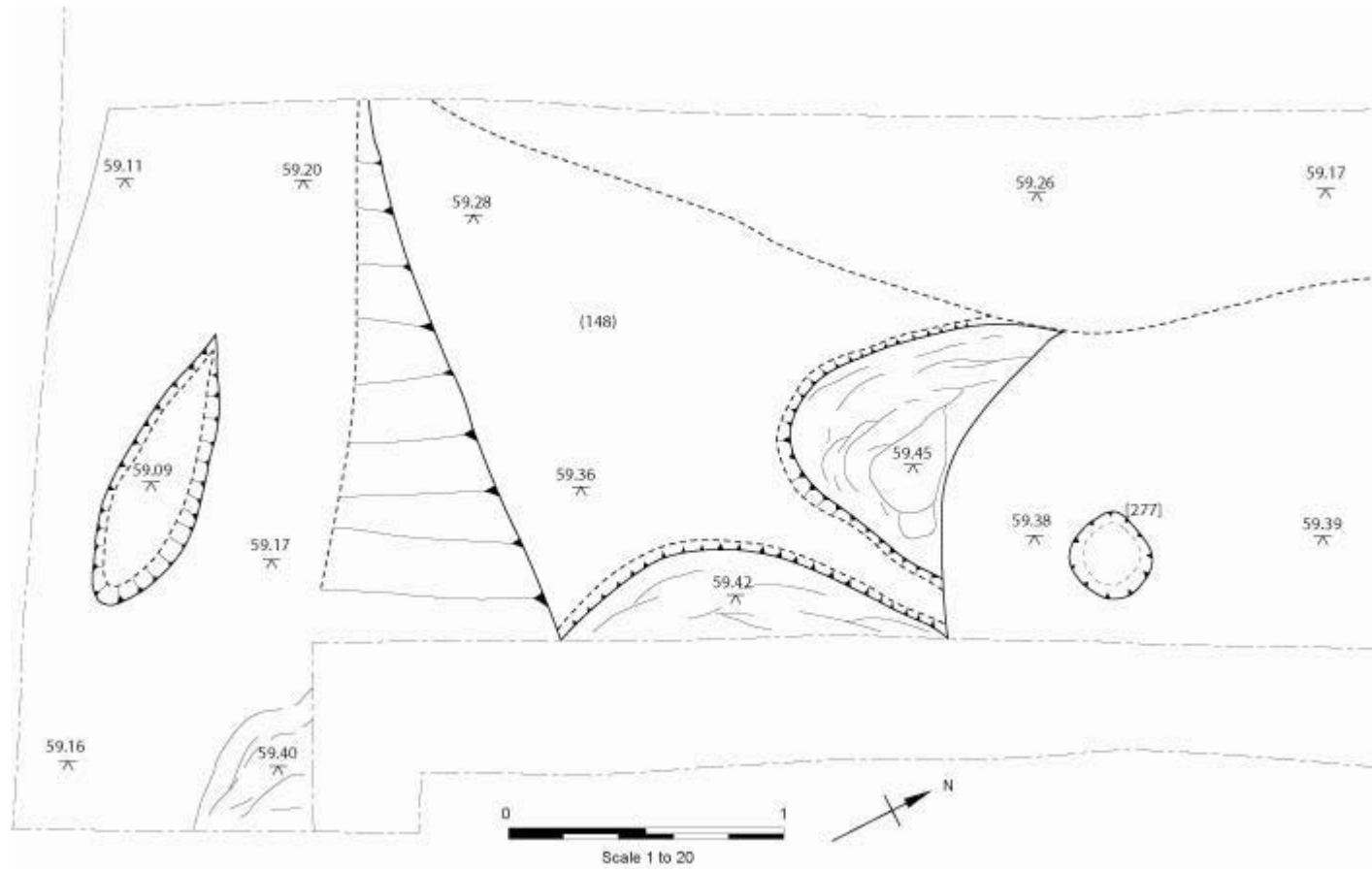


Fig.5: Phase 3/4

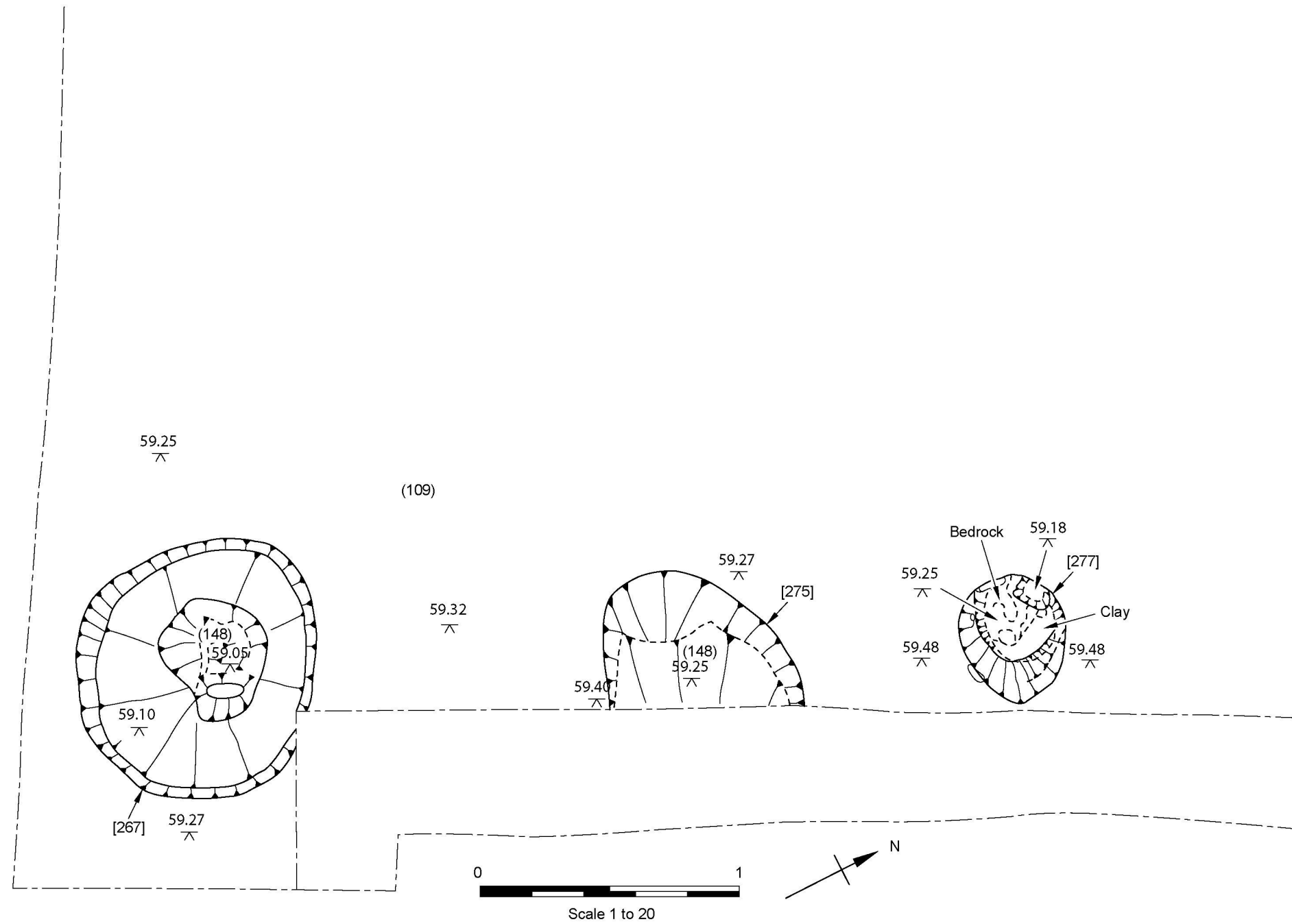


Fig. 6: Phase 3/4

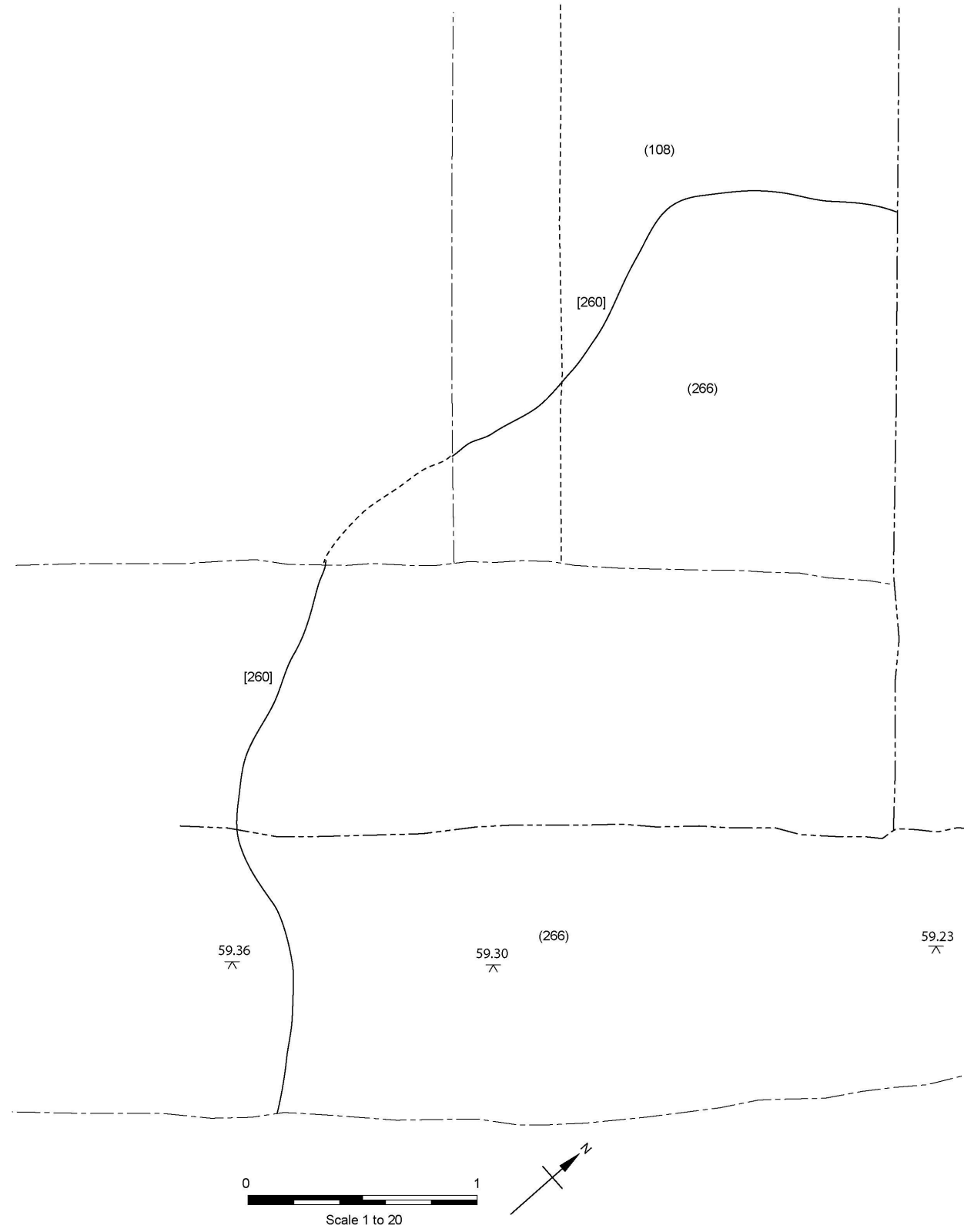


Fig.18: Plan showing Phase 5 feature [260]

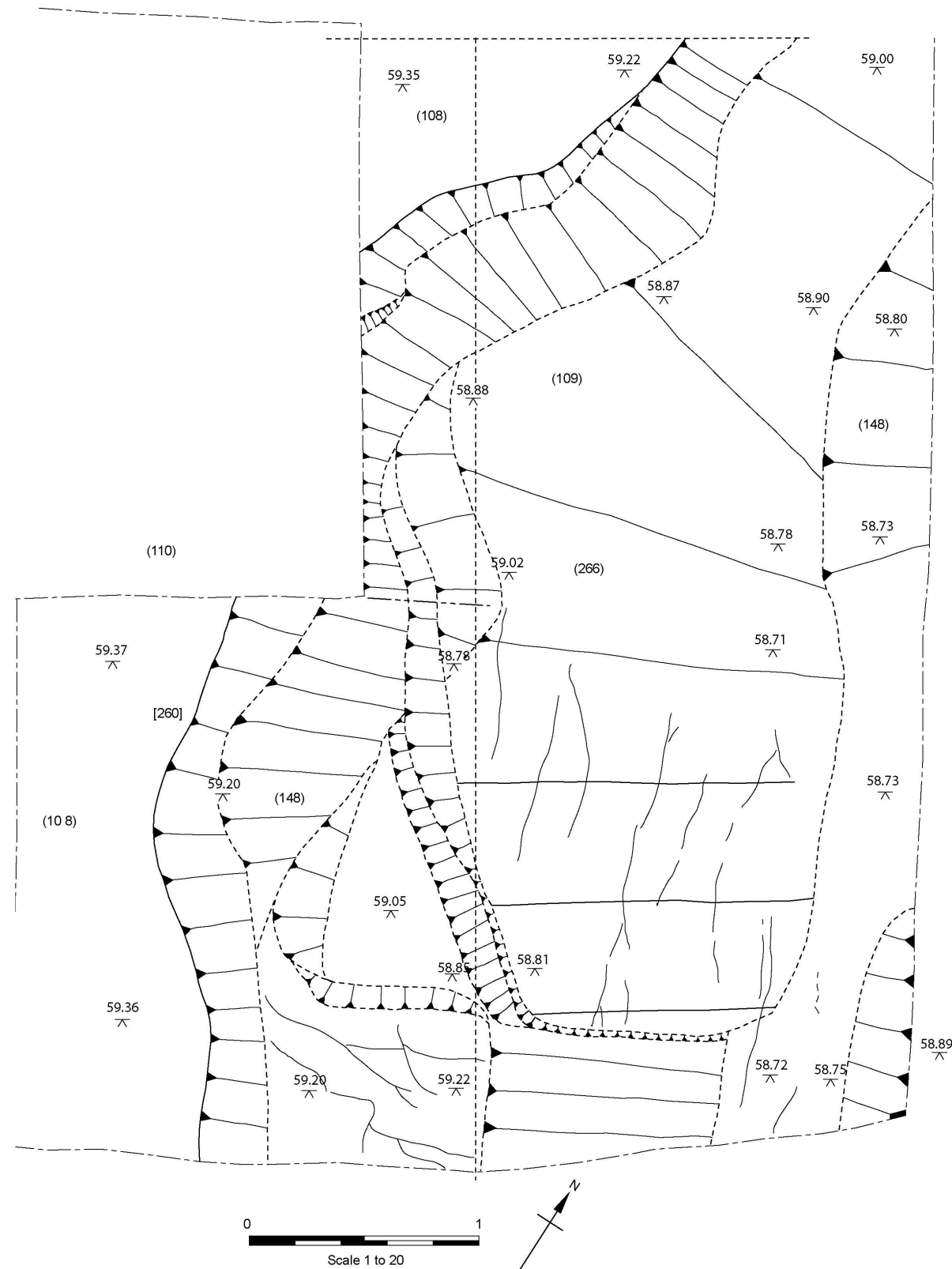


Fig.19: Plan showing [260]

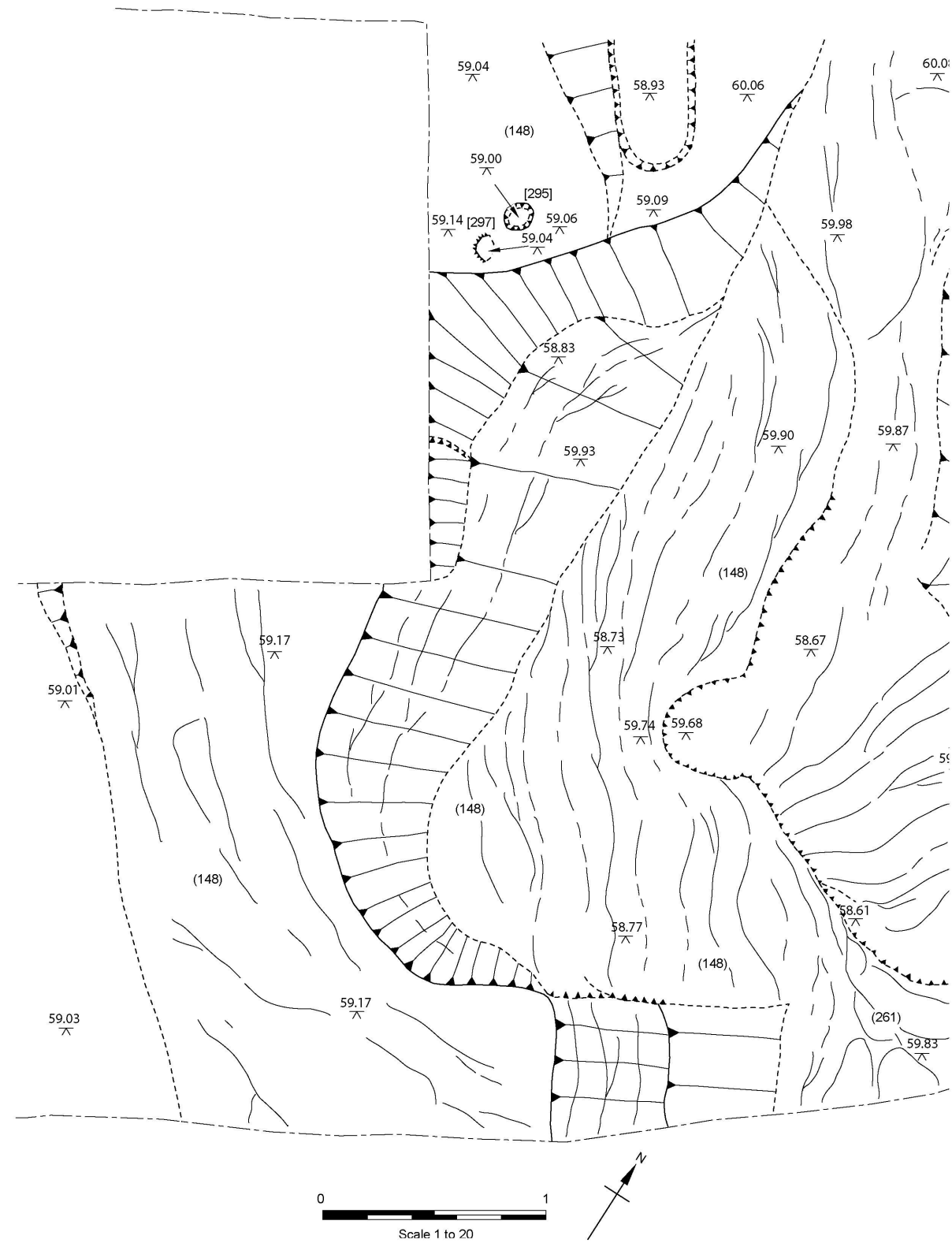


Fig 3 .Plan showing natural (148)

(119)

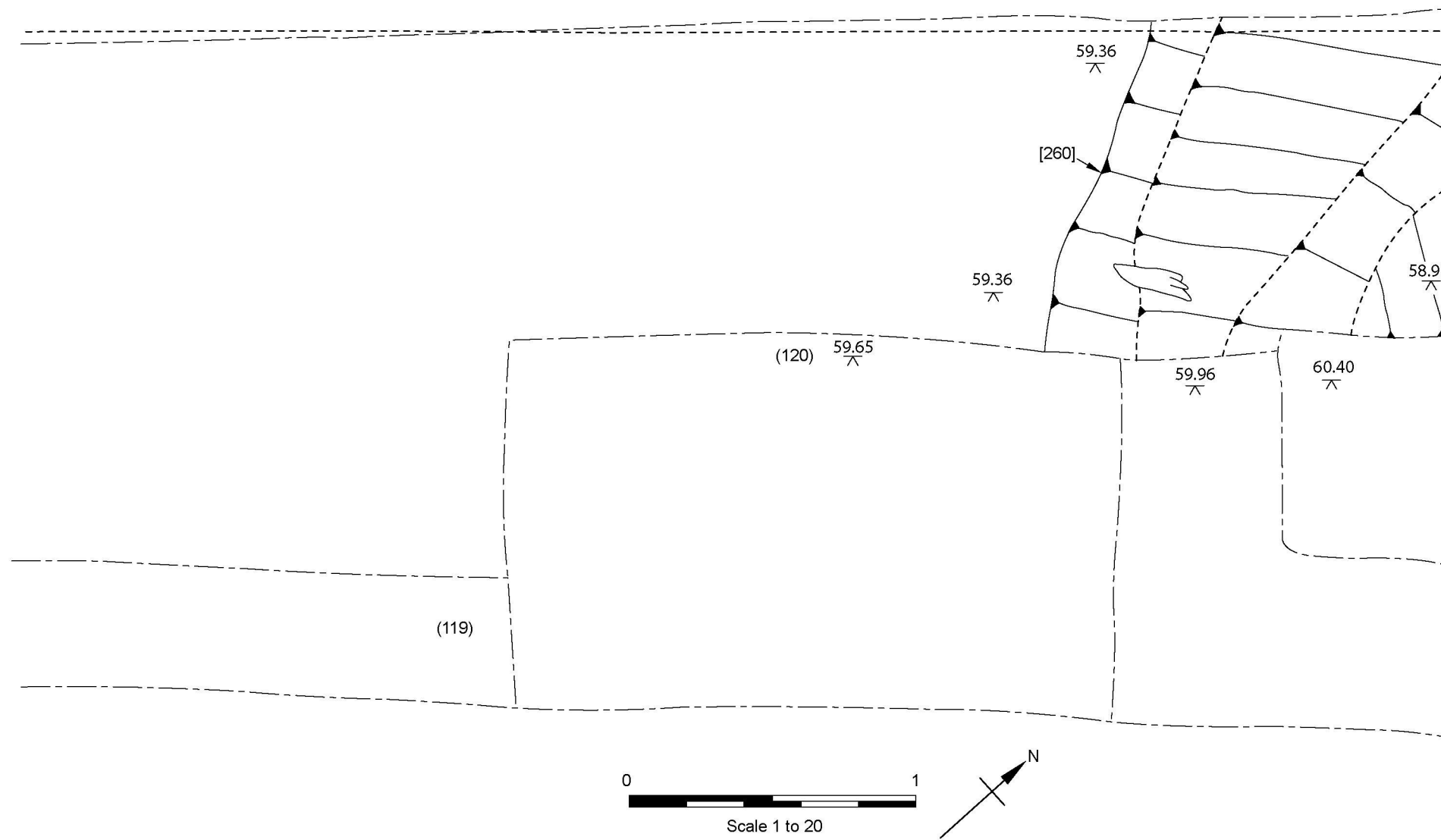


Fig.20: Plan of feature [260]

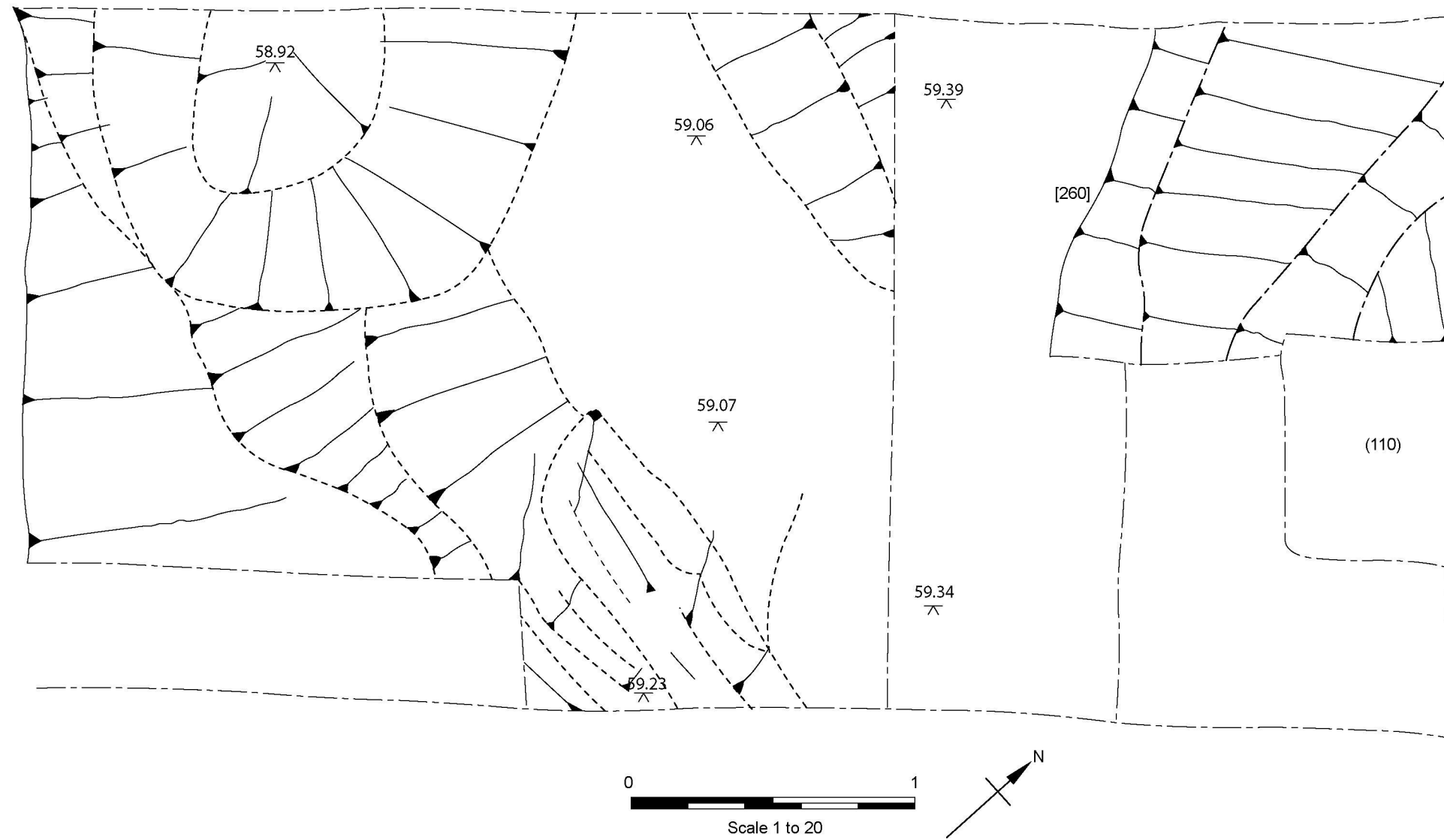


Fig.17: Plan showing Phase 5 feature [260] and Phase 6 deposit (110)

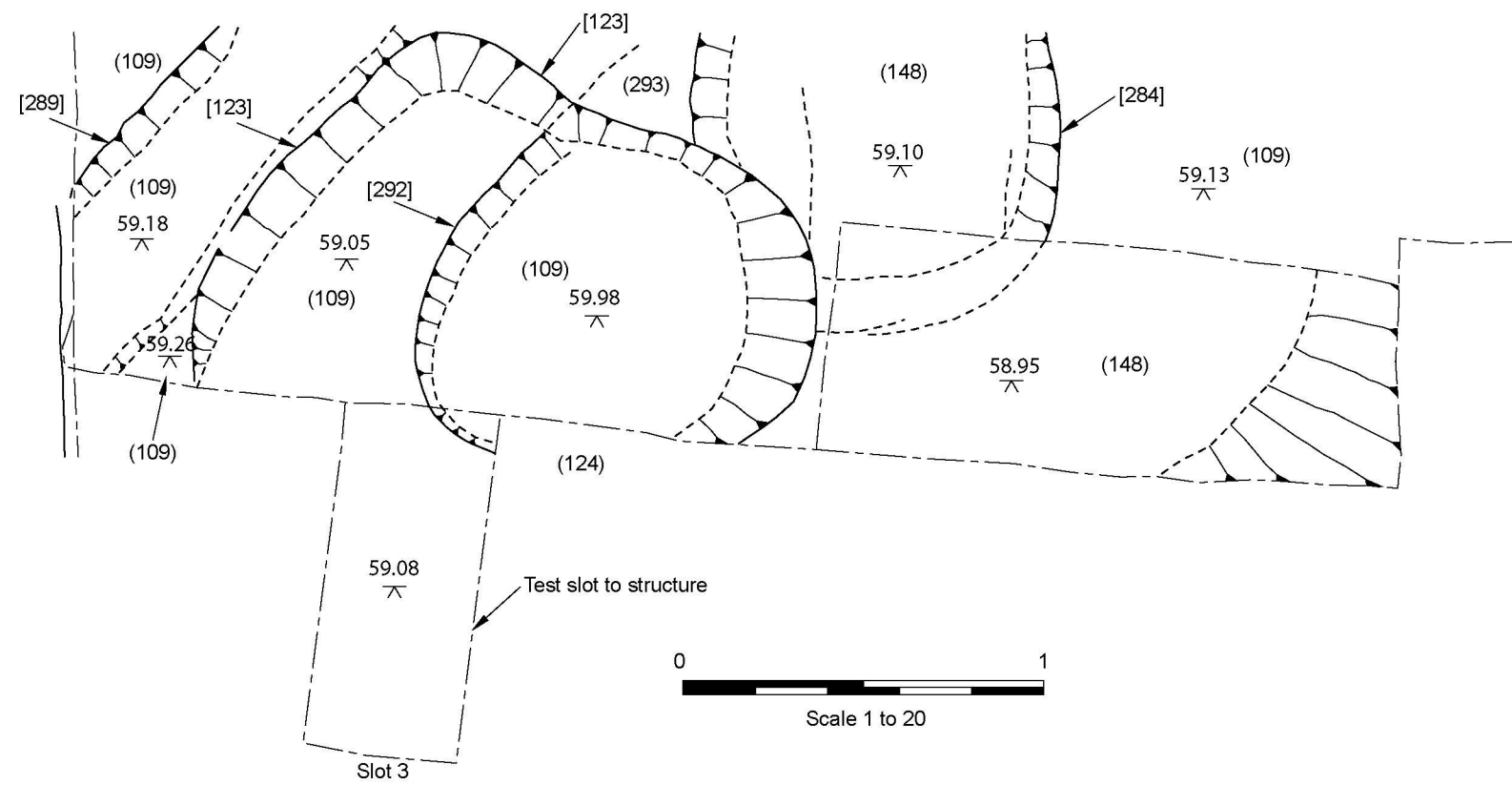


Fig.11: Phase 5 feature [123] and Phase 3/4 feature [284]

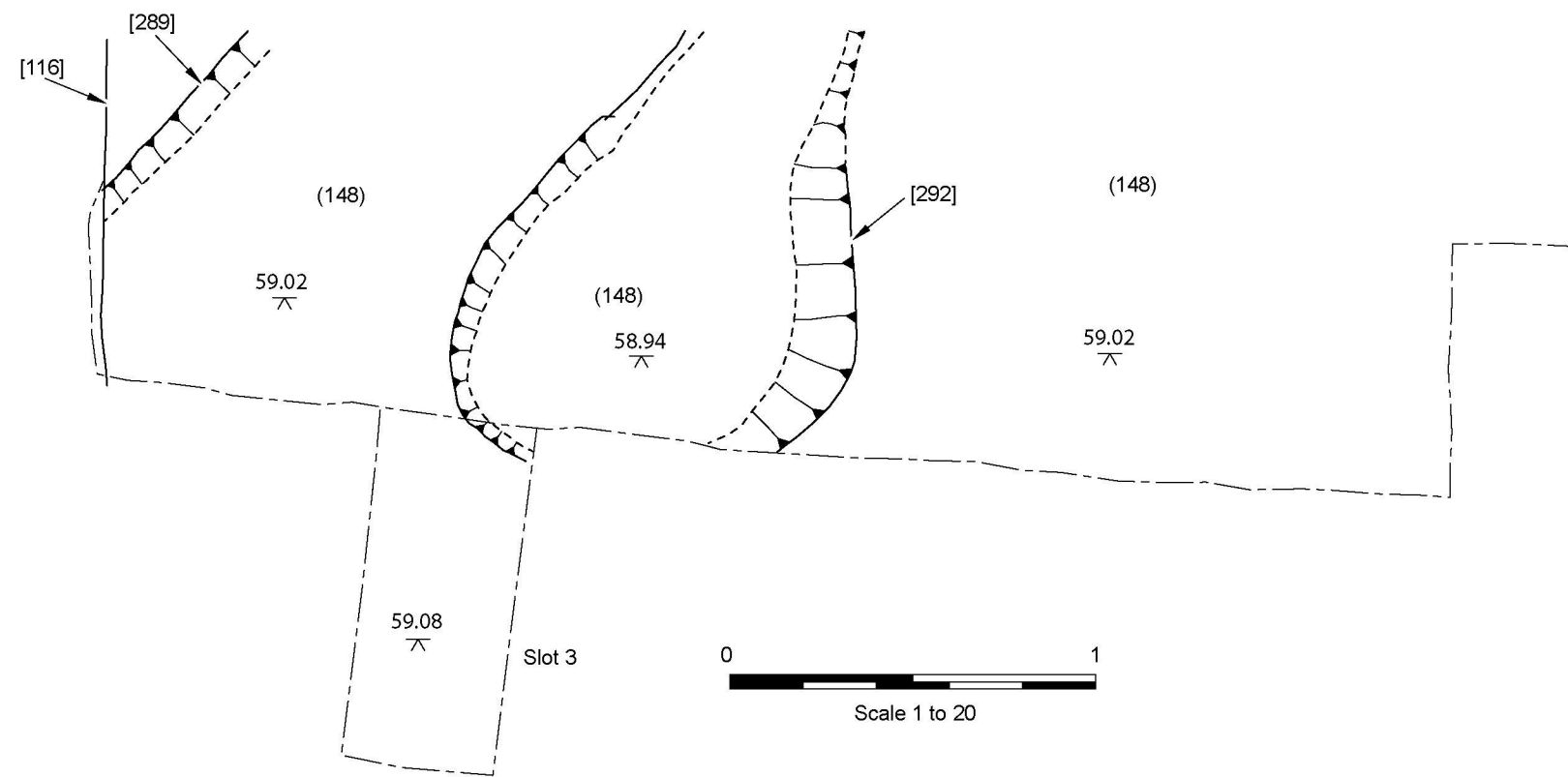


Fig. 7: Phase 3/4

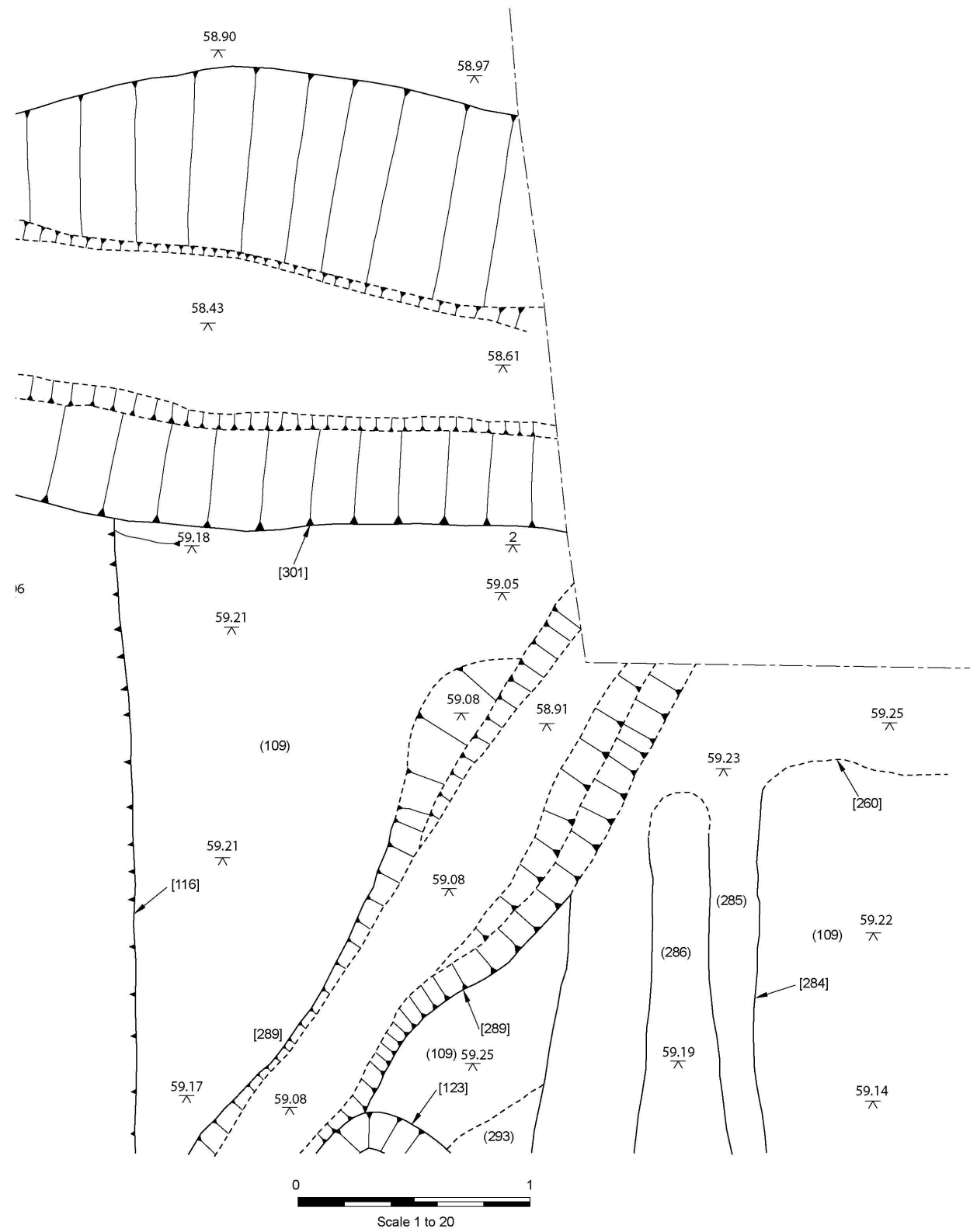


Fig.16: Plan showing Phase 5 features

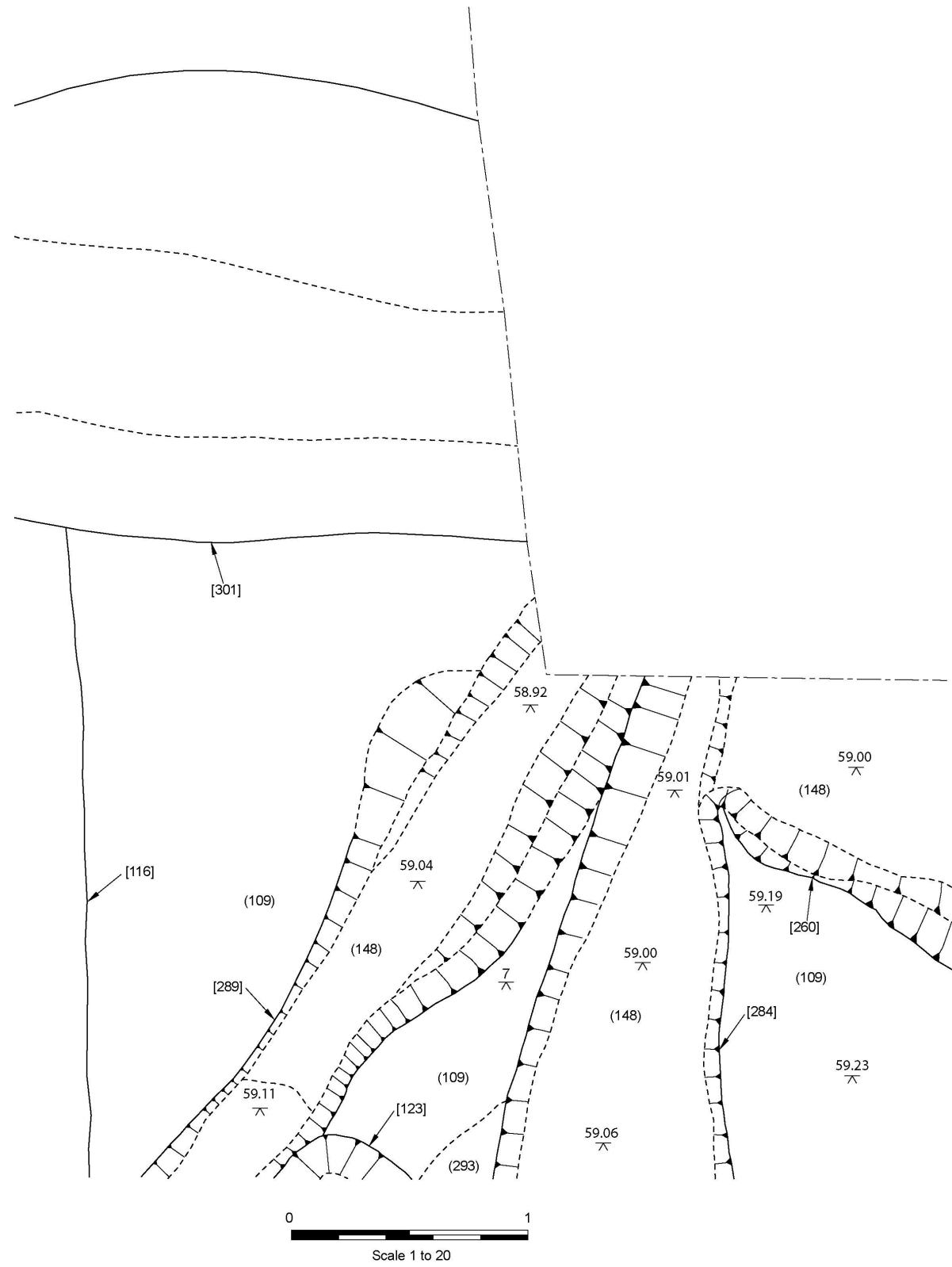


Fig. 8: Phase 3/4

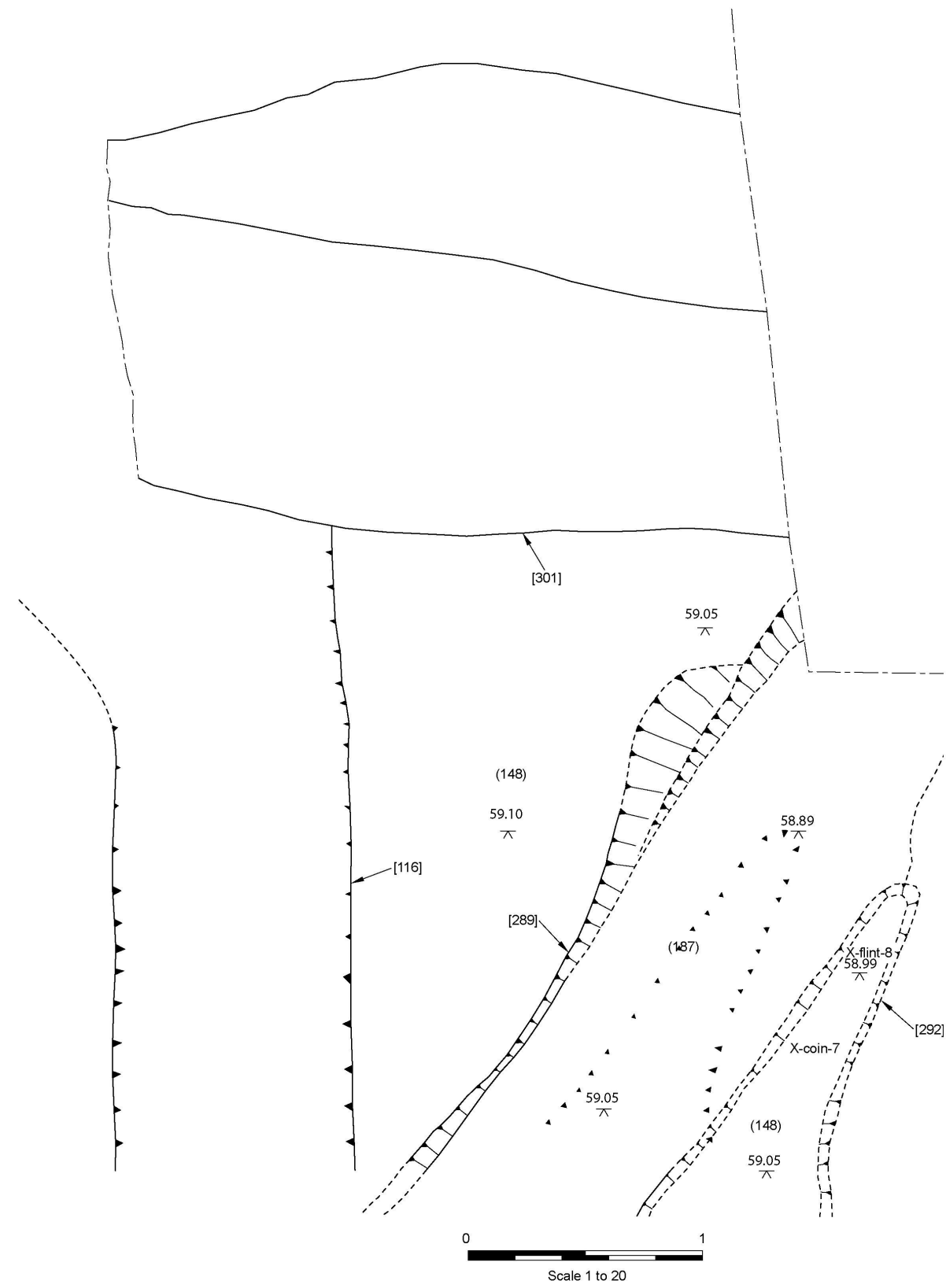


Fig. 9: Phase 3/4

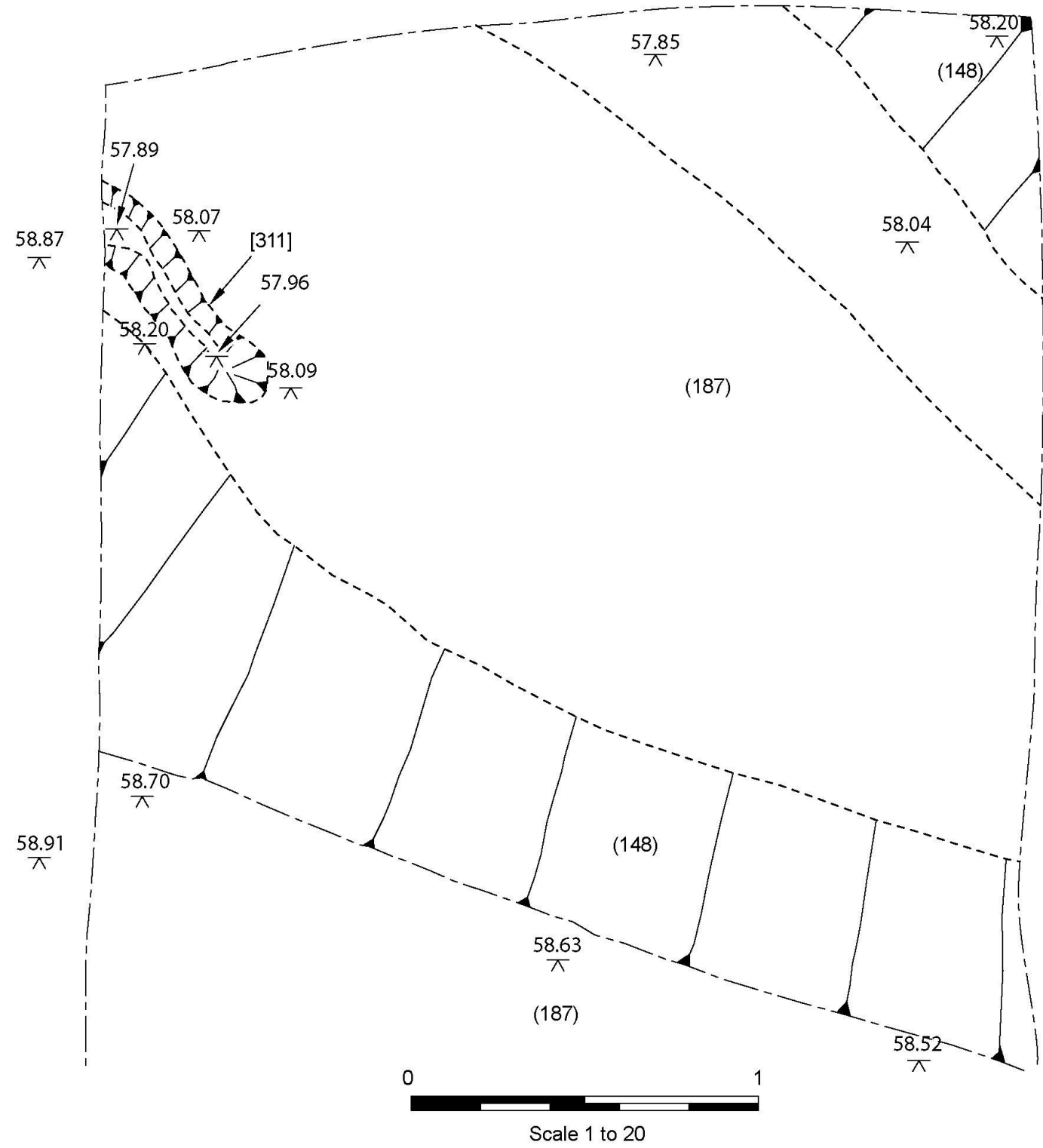
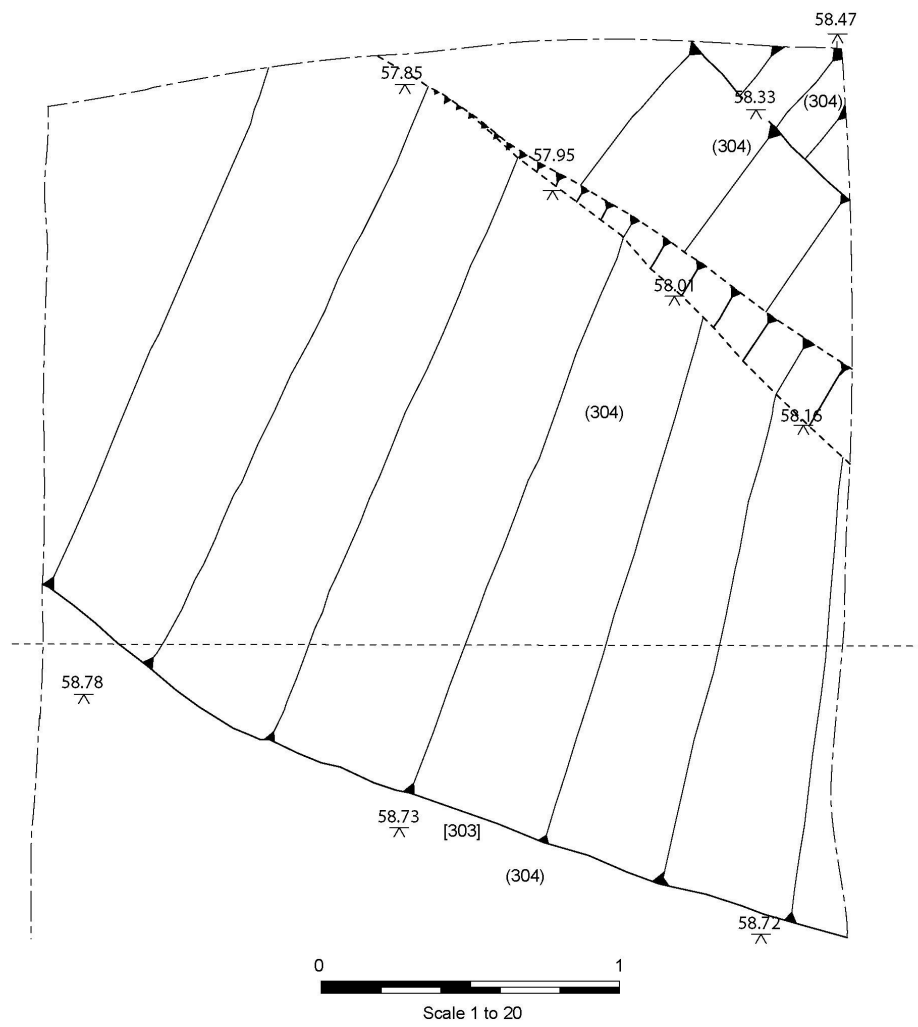


Fig.10: Phase 3/4 feature [311] and Phase 5 feature [303]

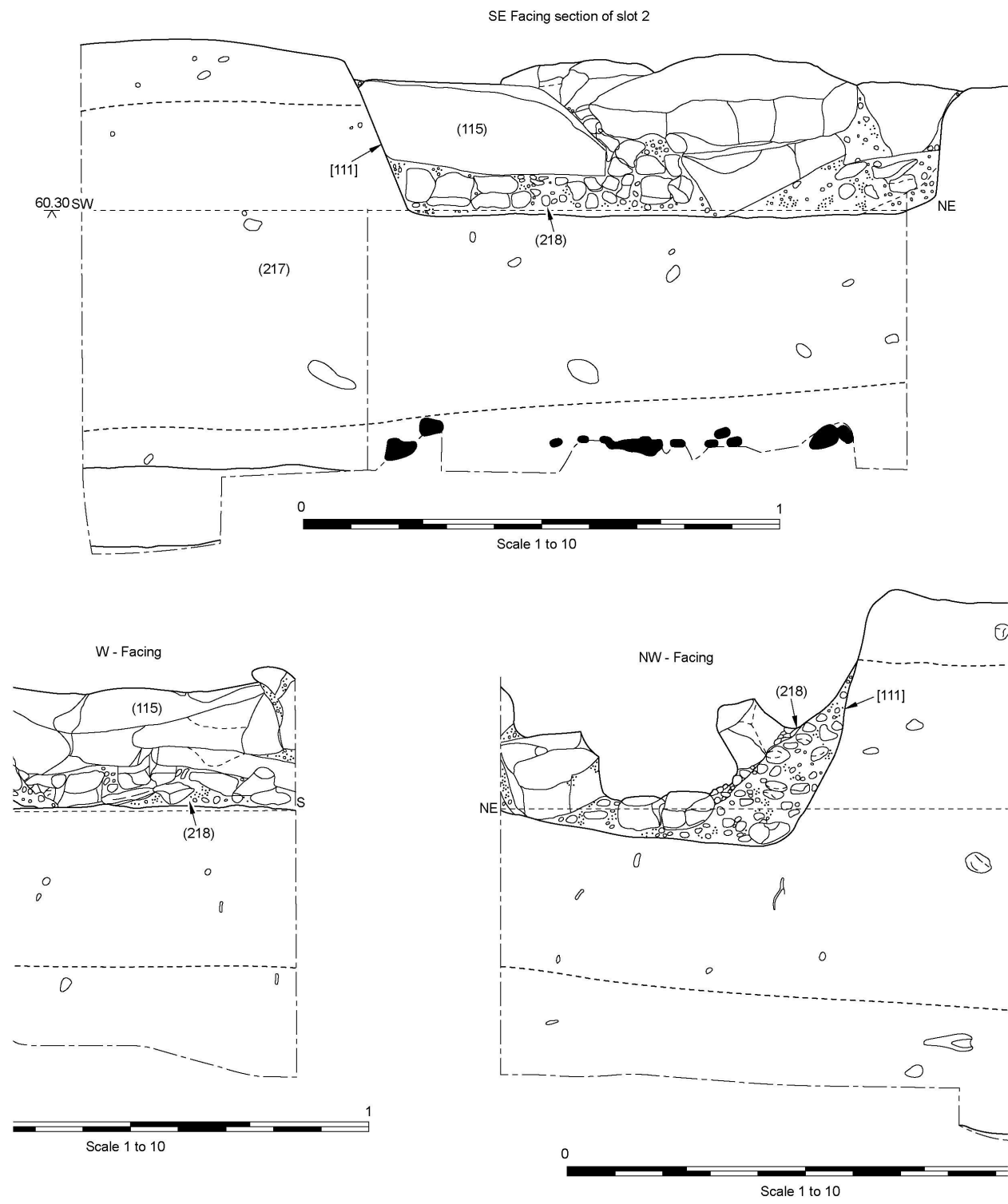


Fig.15: Phase 5 – Section through (115) and [111]



Fig.13: Phase 5 – Plan showing detail of structure (115) and cut [111]



Fig.14: Phase 5 – Plan showing detail of structure (115) and cut [111]



Fig.22: Plan showing (209)

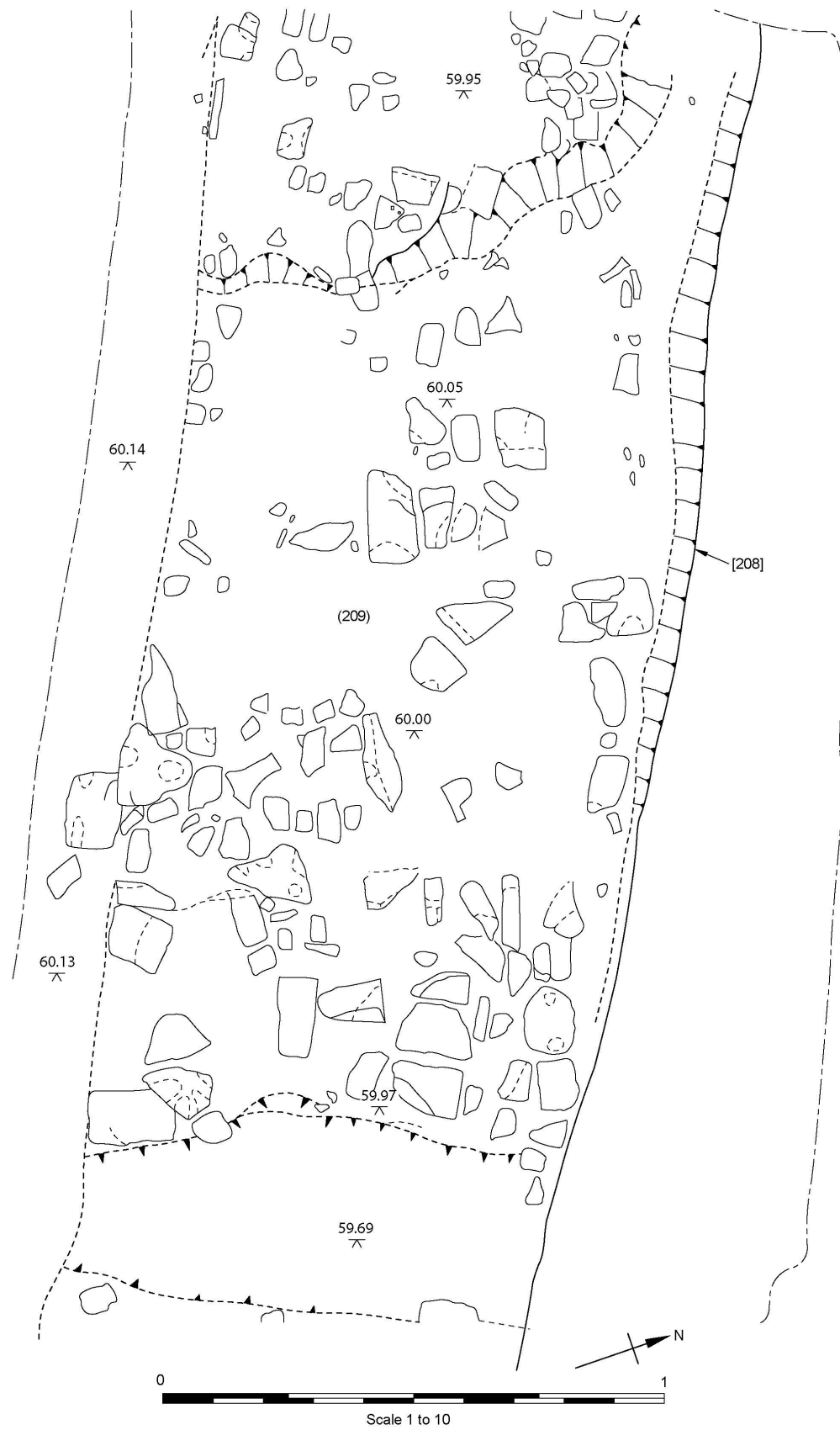


Fig.23: Plan showing [208]

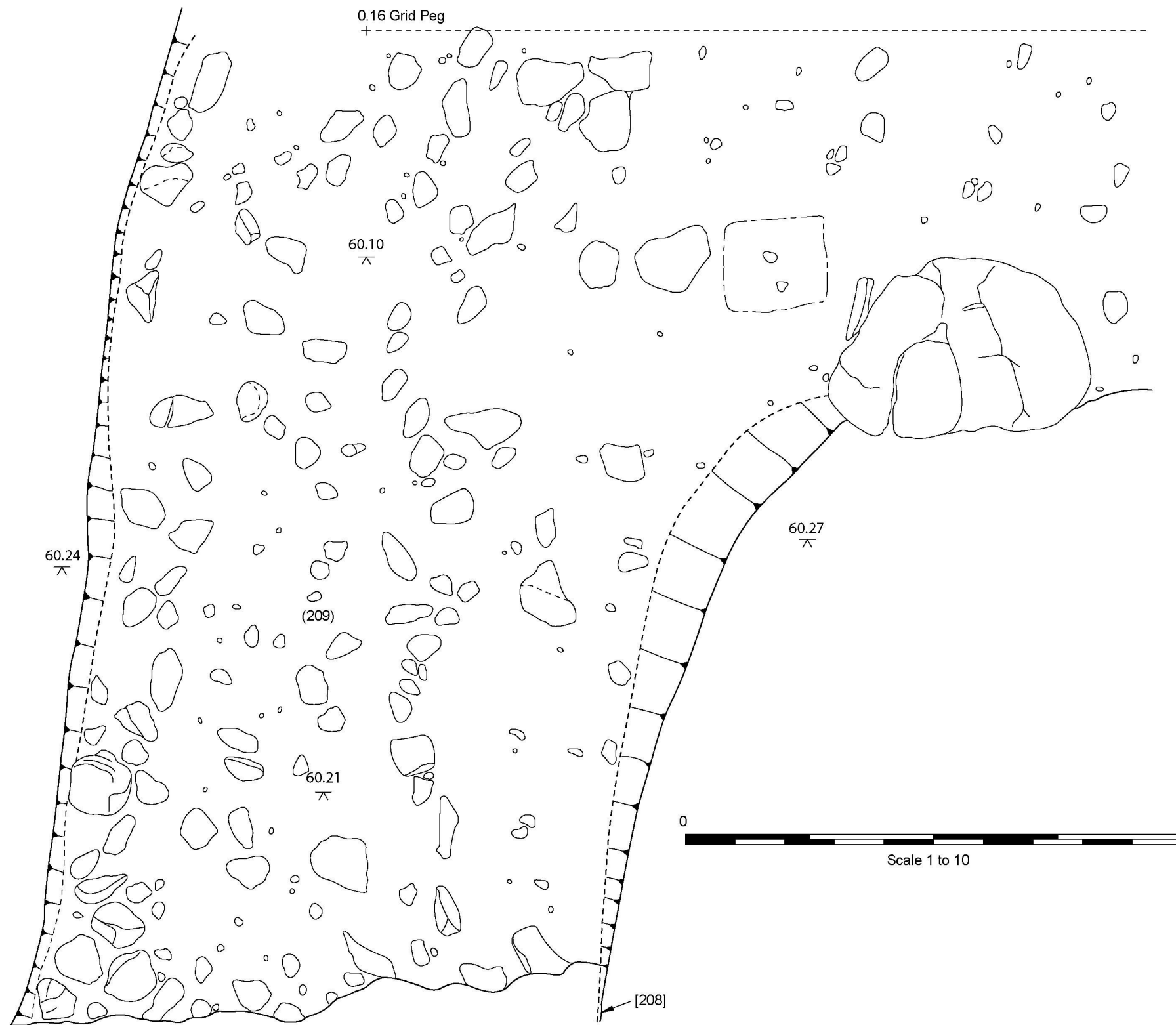


Fig.24: Plan showing [208]

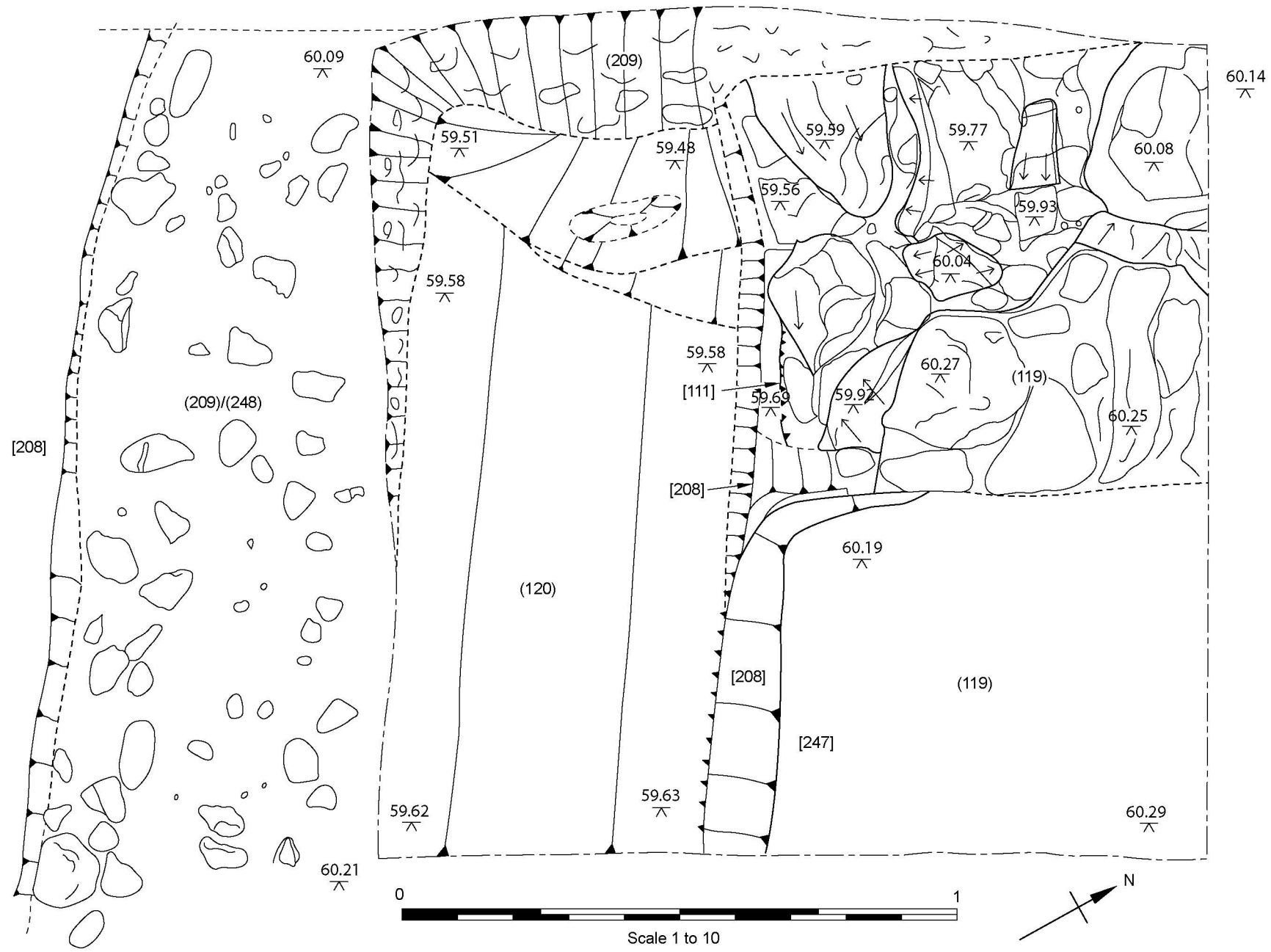


Fig.25: Plan showing [208] and [111]

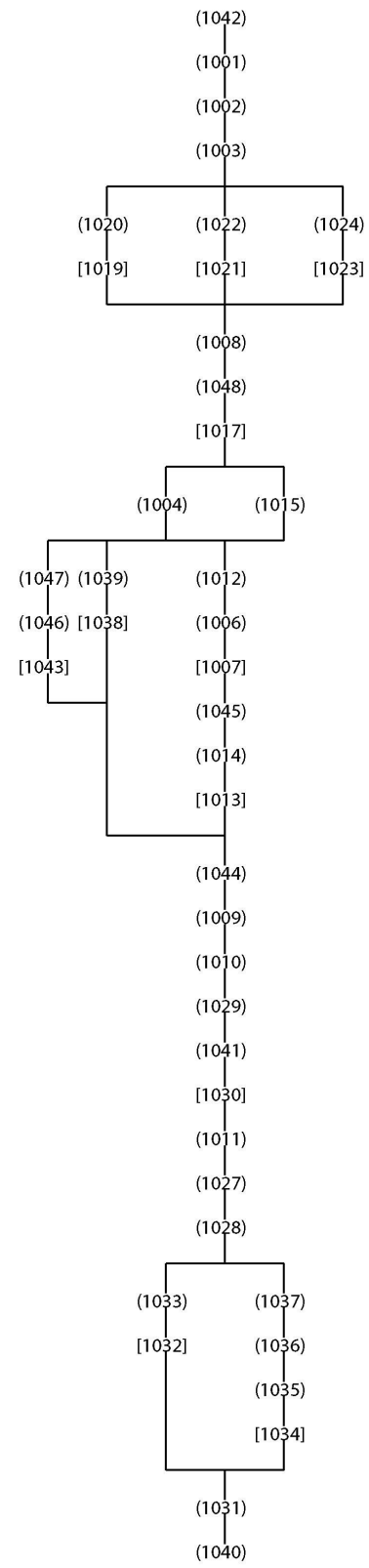


Fig.33: Site Matrix showing stratigraphic relationships within the 'Bishop's Palace' evaluation trench

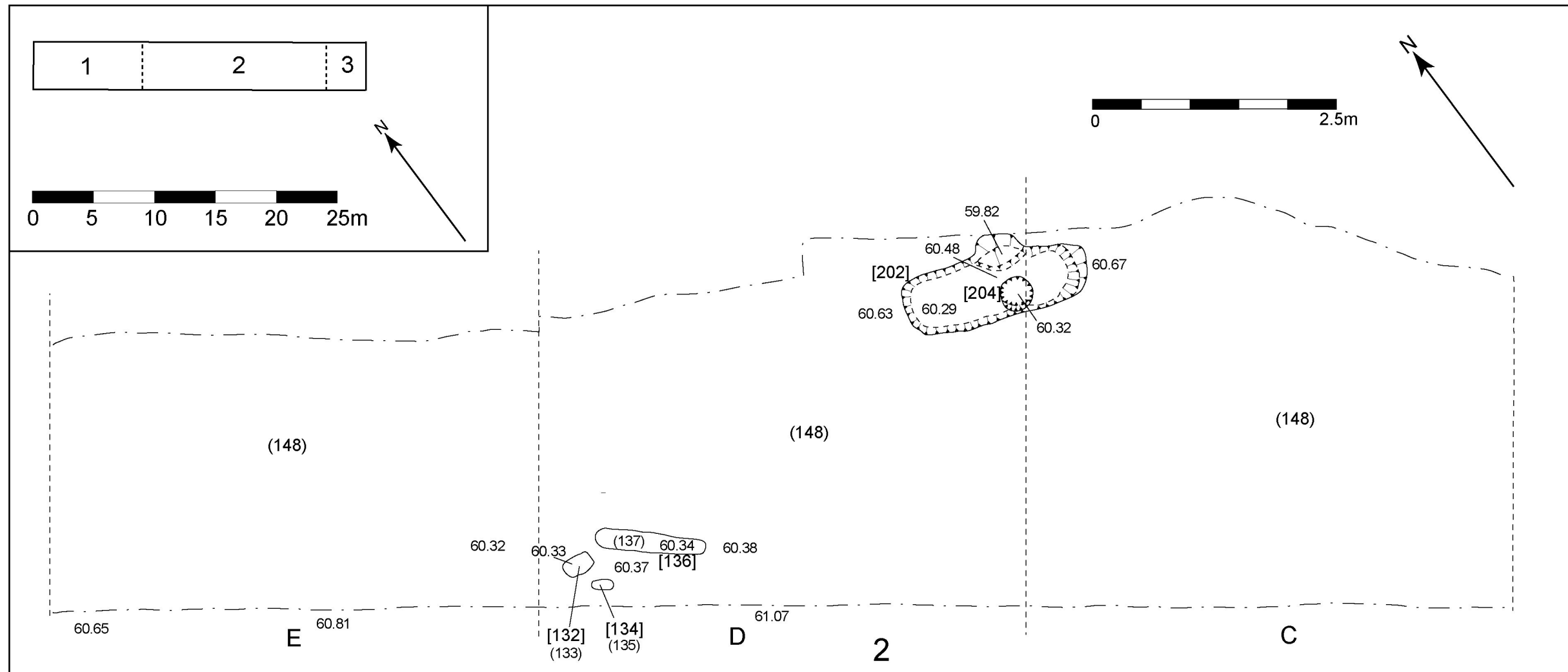


Fig.4: Plane of earliest features (Phase2)

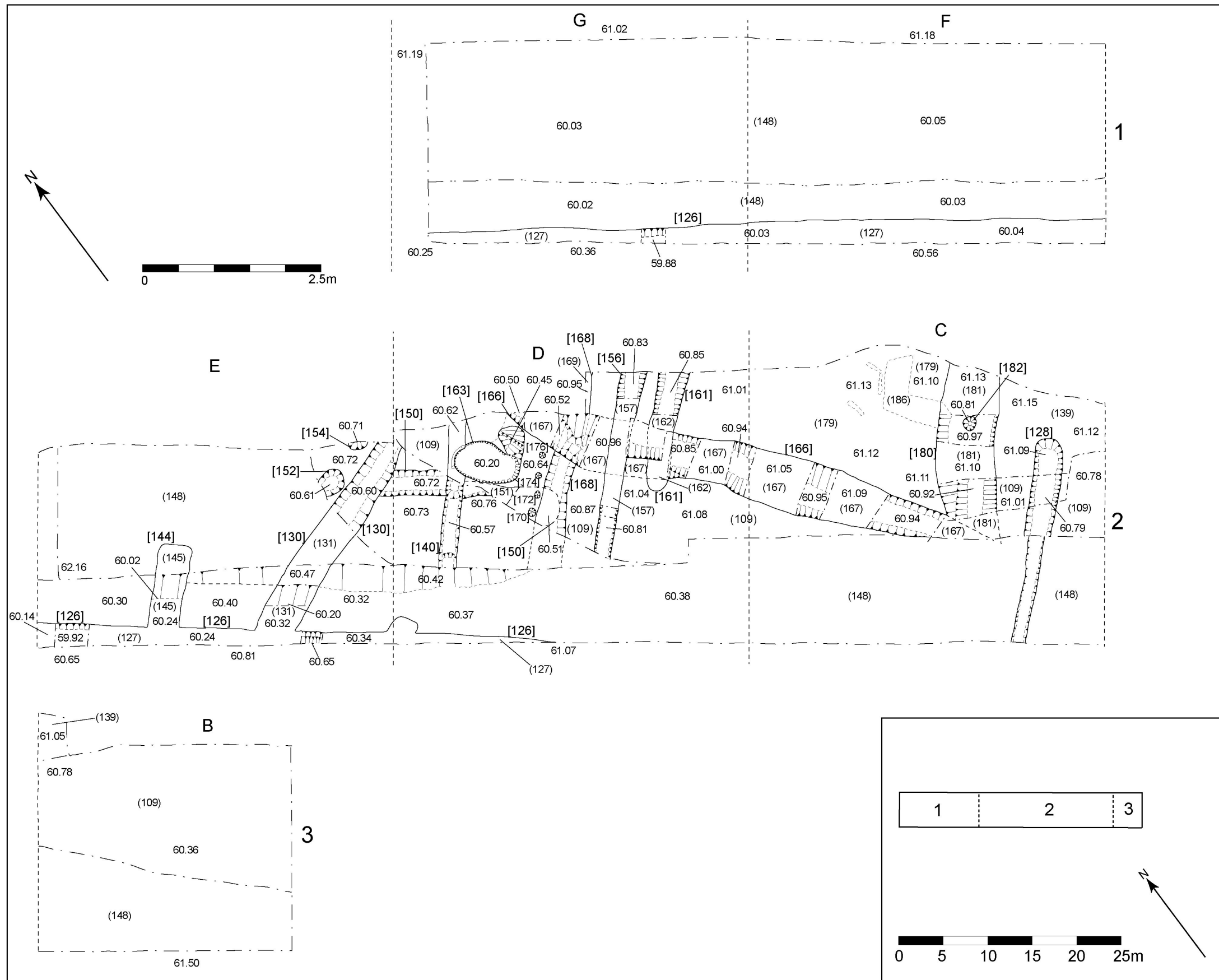


Fig.5: Plan of Phase 3/4 features in S part of Site



Table 2: Pottery dates

102	layer garden	1	1	0	25	7	1	3	3	6	47	700.5	Ro C1/C4; Med, Pmed	34	2996
103	topsoil garden	0	0	0	0	0	0	0	0	0	0	0	Roman	4	357
104	topsoil pre 1700	2	0	1	39	3	5	1	0	9	60	539	C1-C2/C3/Pmed	44	1812
105	subsoil	3	3	2	21	1	0	7	14	9	60	1439	C1/Med/Pmed	50	2655.5
106	layer post-Ro	0	0	3	0	0	0	1	0	0	4	327	C1	1	178
107	topsoil	0	0	0	8	0	0	0	0	0	8	460	C1+	6	796
108	occup layer occup	4	4	11	90	16	1	20	0	0	146	2712.25	C1/C4/pmed	20	1438
109	surface rob layer str	2	1	0	45	1	2	5	0	0	56	837	C1-C2	3	20
110	115	4	0	2	33	3	2	1	16	1	62	463.75	C1-C2/Med; Pmed	62	1891.5
112	boundary wall cut	1	0	0	5	0	0	0	0	0	6	31	Roman	2	28
118		0	0	0	3	0	0	0	0	0	3	26	Roman		
119		19	0	0	54	14	2	14	1	59	163	1169.25	C1/C2/Med/Pmed	18	248.5
120		28	6	20	233	108	7	47	1	0	450	4297.75	C1/C2/Med	85	3239
122		1	0	0	16	23	0	3	0	0	43	473	C1/C2	2	346
124		0	0	0	0	0	0	0	0	0	0	0	Roman	3	6
125		0	0	0	94	0	0	0	0	0	94	122	Roman		
127	linear ditch 126	0	0	0	53	0	0	3	0	0	56	693	C1/2	7	59
129	gully 128 as 110	0	1	0	4	11	0	2	0	0	18	325	C1/2	2	57
138	demol/rob occup	0	0	0	0	0	0	1	0	0	1	54	C1		
139	deposit	6	0	0	1	0	0	0	0	0	7	9	C1		
145	gully 144	1	0	0	1	1	0	0	0	0	3	22.5	Roman	1	49
151	linear 150	0	0	0	1	0	0	0	0	0	1	2	Roman	2	7
157	3rd fill linear 156	0	0	0	2	0	0	0	0	0	2	5	Roman	1	26
158		0	0	0	0	0	0	0	0	0	0	0	Roman	4	14
162	linear 161	0	0	0	4	1	0	0	0	0	5	17	Roman	2	38
164	2nd fill pit 163	0	0	0	2	0	0	0	0	0	2	6	Roman		
165	prim fill pit 163	0	0	0	0	1	0	1	0	0	2	9	Roman	4	5
167	ditch 166	1	0	0	13	2	0	0	0	0	16	205	C1	14	89
179	occup surf	3	2	0	20	1	0	3	0	0	29	310	C1	9	60
181	ditch 180	0	0	0	4	10	0	3	0	0	17	125	C1/C2	2	8
186		0	0	0	0	0	0	0	0	0	0	0	Roman	4	164
203		0	0	0	0	0	0	0	0	0	0	0	Roman	1	11
209	fill rob tr 208	1	0	0	11	1	0	0	0	0	13	102	C1	1	11
211		0	0	0	23	1	0	1	0	0	25	79	C1		
214		1	0	0	13	0	0	0	0	0	14	420	C1		
216		3	3	0	31	11	2	1	0	12	63	709	C1/Pmed (19th)	33	775
218		0	0	0	1	0	0	0	0	0	1	7	Roman		



226	0	0	0	1	0	0	0	0	0	1	7	Roman		
232	0	1	0	0	2	0	0	0	0	3	15	C1/C2	1	1
250	2	0	1	0	0	0	0	0	0	3	235	C1	1	337
261	10	0	0	71	17	4	40	0	0	142	1221.5	C1	9	173
262	0	0	0	9	1	0	1	0	0	11	236	C1/C2		
263	0	0	0	0	1	1	0	0	0	2	23	C2		
264	0	0	0	5	3	0	0	0	0	8	55	Roman		
268	0	0	0	1	0	0	0	0	0	1	1	Roman	1	191
276	0	0	0	0	0	0	1	0	0	1	3	C1		
278	0	0	0	0	0	0	0	0	0	0	0	Roman	2	3
281	0	0	0	0	0	0	0	0	2	2	121	Roman/med	11	3242
285	0	1	0	1	1	0	2	0	0	5	178	C1	2	4
286	1	0	0	1	0	0	1	0	0	3	6	C1		
294	0	0	0	0	0	0	4	0	0	4	12	C1		
302	0	0	0	11	0	0	0	0	0	11	60	C1	1	9
304	0	0	0	6	0	0	1	0	0	7	64	C1/C2		
305	0	0	0	5	23	0	1	0	0	29	489	C1/C2		
306	1	0	0	4	1	0	0	0	0	6	58.25	Roman	1	2
307	0	0	0	0	0	0	0	0	0	0	0	Roman	2	2013
312	0	0	0	1	0	0	0	0	0	1	1	Roman		
1001	0	0	0	0	0	0	3	0	1	4	30	Roman/Pmed	3	292
1002	0	0	0	3	0	0	0	0	0	3	37	Roman/med	2	113
1005	1	2	0	0	0	0	0	0	0	3	58	C1/med	6	236
1008	2	0	0	0	0	0	1	0	0	3	14	C1/C2	6	616
1014	0	0	0	0	0	0	0	0	0	0	0	Roman	4	24
1024	0	0	0	1	0	0	0	0	0	1	22	Roman	6	383
1029	0	1	0	0	0	0	0	0	0	1	740	C1		
1046	0	0	0	0	0	0	0	0	0	0	0	Roman/Med	3	597
102/103	0	0	0	1	0	0	0	0	1	2	47	Roman/Pmed	1	1299
108/109	0	0	0	6	1	0	0	0	0	7	98	Roman	1	5
US	1	1	2	23	2	0	16	5	4	54	874	Roman/Med/Pmed	11	704
TOTAL	98	26	40	977	266	27	172	35	100	1741	20528.75		484	26925

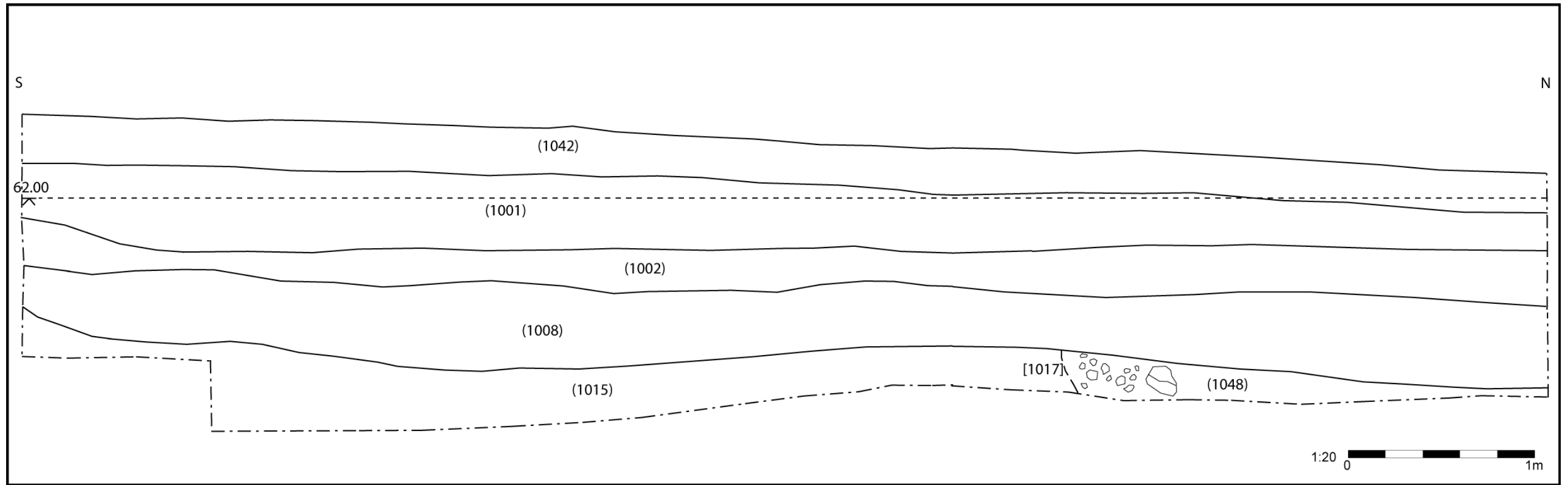


Fig.27: E-facing section of evaluation trench

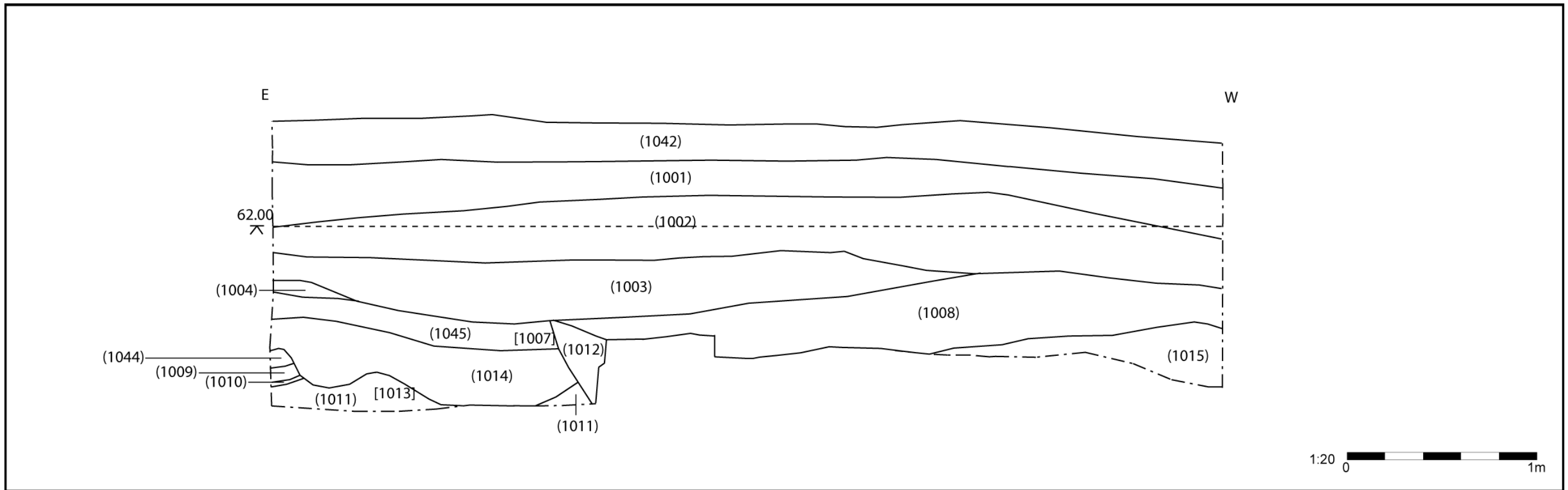


Fig.28: N-facing section of evaluation trench

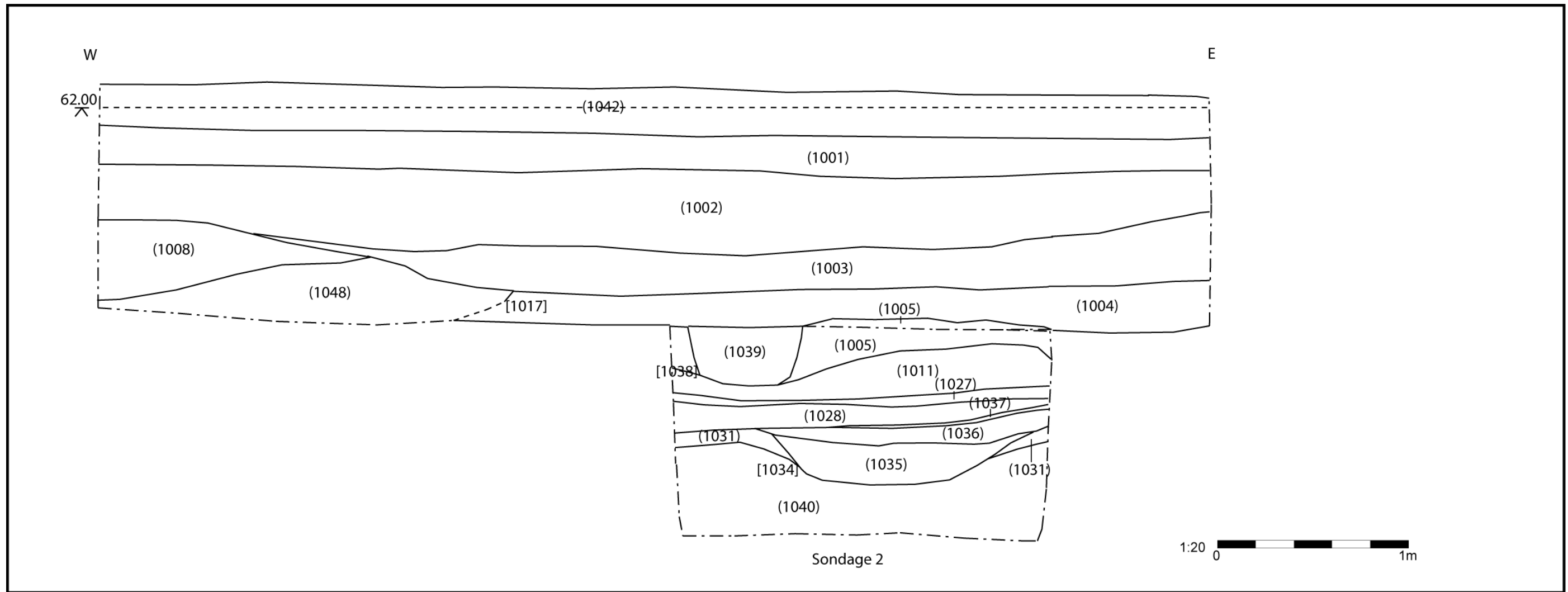


Fig.29: S-facing section of evaluation trench

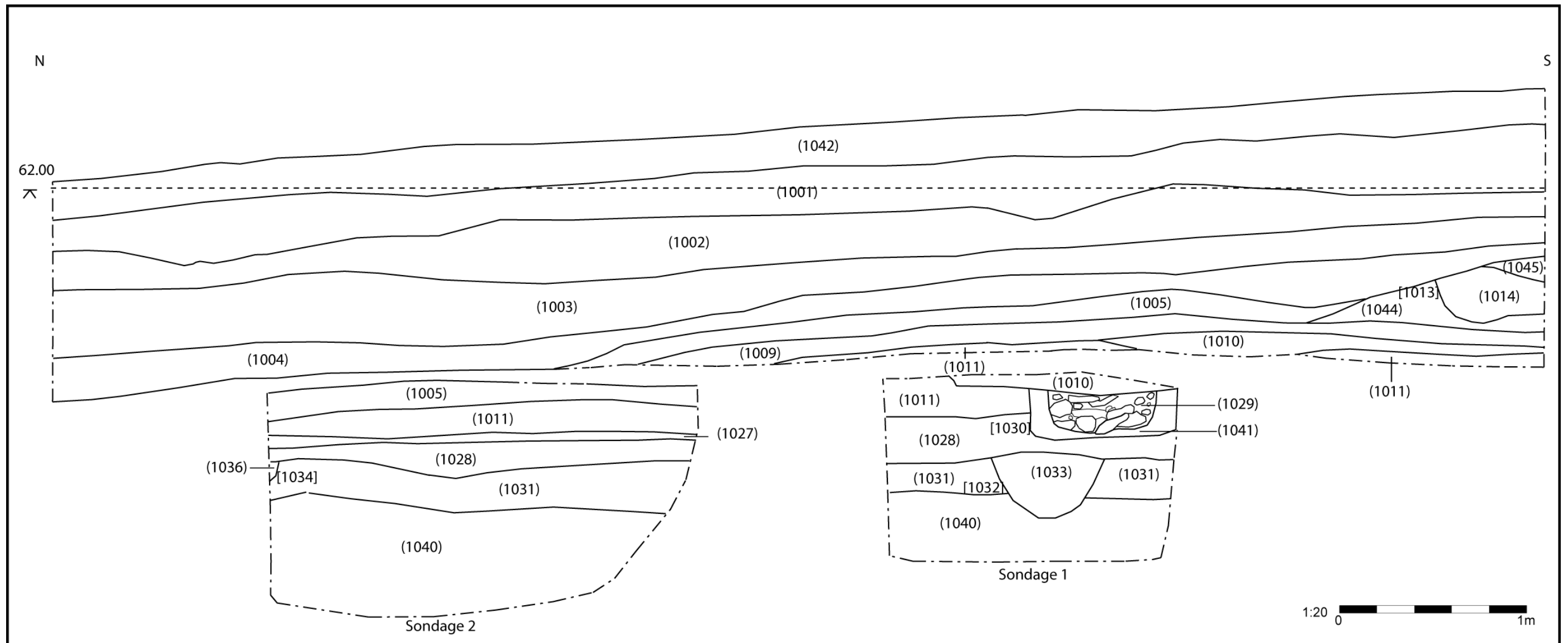


Fig.30: W-facing section of evaluation trench