

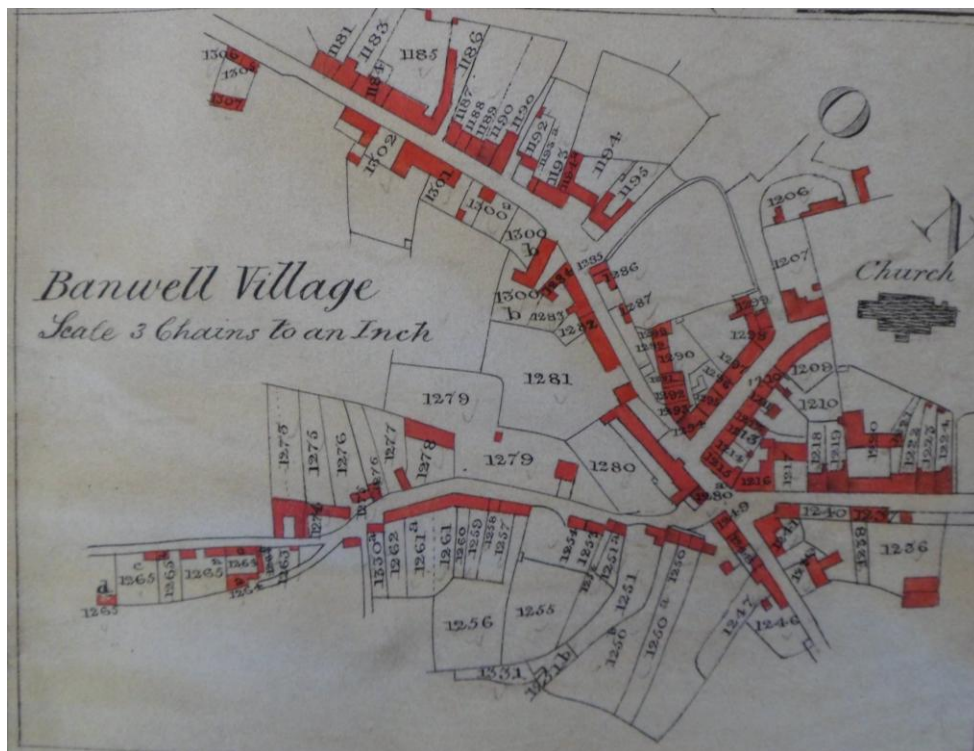
ARCHAEOLOGICAL WALKOVER SURVEY

BANWELL TO HUTTON WATER MAIN

NORTH SOMERSET

NGR: ST39963 59302 to ST34399 58245

JOB N^o: BA1129BWBH



Head Office: Chapel Walk Burgess Street Leominster Herefordshire HR6 8DE Tel: 01568 610101

Winchester Office: Unit 25 Basepoint Business Centre Winnall Valley Road Winchester Hampshire SO23 0LD Tel: 01962 832720

Email: neil@borderarchaeology.com Web: www.borderarchaeology.com

JANUARY 2012



Contents

1. NON TECHNICAL SUMMARY	3
2. INTRODUCTION	4
3. METHODOLOGY	5
4. RESULTS	6
5. DISCUSSION	18
6. MITIGATION	19
7. COPYRIGHT	20
8. PHOTOGRAPHIC RECORD	21
9. BIBLIOGRAPHY	39
10. CARTOGRAPHY	39
11. APPENDIX 1: PLANS	40

Frontispiece: Extract from the Banwell Tithe Map of 1838

Report specification:

Archaeological Walkover Survey: Neil Shurety, George Children MA MifA, Stephen Priestley MA, Ross Shurety BA

Report compilation: George Children MifA

Report editing: Stephen Priestley MA

Approved & Final Edit: Neil Shurety Dip.M. GM Inst.M



1. Non Technical Summary

Border Archaeology was commissioned by Bristol Water to carry out a detailed Walkover Survey (in addition to the Desk-Based Assessment already supplied) of the proposed water pipeline route extending west from a connection point immediately east of Church Street Banwell for a distance of some 7.1km to a termination point at the covered reservoir located to the southwest of Hutton, adjacent to Hay Wood.

The Survey was undertaken in December 2011 and January 2012 within the proposed 20m pipeline corridor (strip-back) and any evidence of buried or upstanding archaeological remains likely to be impacted by the proposed groundworks was recorded photographically and its location plotted onto a base map.

Extensive evidence of drainage activity was identified during the course of the Survey and a number of the field boundaries were encountered that appeared to be of some antiquity, based on their substantial bank and ditch construction and their long-established presence in the landscape, as attested by the historic map evidence.

A possible hollow-way was noted extending along the line of the Hutton and Locking parish boundary close to the route of the pipeline and a large circular feature identified from aerial photography lies directly on the pipeline route in a field to the west of the M5 motorway, although no clear evidence of this feature was visible at ground level.

Additionally, a number of potential features represented by shallow linear and non-linear depressions and undulations were identified, particularly in fields immediately north and northwest of the Banwell Roman Villa Scheduled Area. The date and function of these features remains uncertain, some of them could represent relict drainage or cultivation features or possibly relict field boundaries. Of particular interest is a shallow, semicircular feature identified adjacent to the E boundary of Field 059, immediately N of the scheduled area of Banwell Roman Villa.

The date and function of these features remains undetermined but in view of their close proximity to the villa site, a possible association with Roman activity should certainly be considered.



2. Introduction

Border Archaeology was instructed by Nol Vincent Esq. on behalf of Bristol Water to undertake a detailed Walkover Survey of the proposed pipeline route extending from a connection point in fields immediately to the east of the Banwell Roman Villa Scheduled Ancient Monument to the covered reservoir located to the southwest of Hutton adjacent to Hay Wood (NGR: ST39963 59302 to ST34399 58245), a distance of some 7.1km (**Figs. 1 & 2**).

The aim of the Survey was to identify any evidence of buried or upstanding archaeological remains lying within the designated wayleave corridor extending approximately 20m either side of the pipeline and to assess the impact of the groundworks on any such remains. During the course of the Survey, Border Archaeology adhered to the route shown on the plan (Drawing No. 121818-XXXX-0X Revision A1) produced by Black & Veatch and supplied by Bristol Water for information. Only those numbered fields where access has been granted were entered.

This Report will be remitted to Nol Vincent of Bristol Water and to Vince Russett County Archaeologist, North Somerset Council.

2.1 Soils & geology

The area around Banwell is characterised by brown rankers of the CRWBIN series (313c), comprising very shallow and shallow well-drained loamy soils over limestone, overlying carboniferous limestone. The Hutton area is characterised by stagnogleyic brown earths of the Whimble 1 series (572d). These are composed of reddish fine loamy over clayey soils; the underlying geology comprises drift over Permo-Triassic reddish mudstone (SSEW 1983).



3. Methodology

Fieldwork was carried out in accordance with established professional practice. Border Archaeology adheres to the *IfA Code of conduct* (2010) and *Code of approved practice for the regulation of contractual arrangements in field archaeology* (2008).

Designated fields were walked systematically with reference to the supplied plan by a team composed of four Border Archaeology staff members. The location of any finds or features was recorded photographically. Subsequent interpretation was carried out with reference to historic mapping, specifically the parish tithe maps and apportionments for Hutton (1838) and Banwell (1838), in conjunction with successive editions of the Ordnance Survey.

Full written, graphic and photographic records were made in accordance with Border Archaeology's *Field Recording Manual*. Pro-forma recording sheets were completed in the field during the course of the survey and a photographic record compiled using a high-resolution digital camera. Each photograph, other than general landscape shots, contained an appropriate scale and images were cross-referenced by frame number to the written record.



4. Results

The following table presents the results of the Walkover Survey, the field numbers correspond to those marked in the pipeline route plans (**Figs. 1 & 2**)

FIELD NO.	PLATE No.	GRID REF.	DESCRIPTION	IMPACT
001	1	ST 34409 58195 - ST34413 58255	Covered reservoir within a modern enclosure of some 0.9ha which has been heavily impacted by engineering activity	None
002	2	ST34413 58255 - ST34436 58290	Small linear NNW-SSE aligned field enclosure. Field boundaries slightly sinuous on long axis. Evidence of two possible linears running E-W possibly indicative of relict drainage or cultivation features	Impact anticipated on S and E hedge boundaries and on possible linears
003	3	ST34436 58290 – ST34567 58433	Linear NNW-SSE aligned field enclosure with slightly sinuous boundaries on long axis. The 1838 Hutton parish tithe map names the eastern part of this field as 'West Field' and shows it divided into long narrow strips. No features indicative of these earlier field divisions were observed	Impact on W hedge boundary, no other impact anticipated
004	4	ST34567 58433 – ST34476 58671	Largely rectilinear field enclosure with slightly sinuous boundary on eastern side. Aligned NNW-SSE. Retains form shown on 1838 Hutton parish tithe map. No features observed	Impact on N and S hedge boundaries, no other impact anticipated
005	5	ST34476 58687 - ST34401 58886	Linear field enclosure aligned NNW-SSE. Shown on the parish tithe map as forming part of 'North Hills' comprising a number of narrow linear strips. Several E-W linear features were noted, possibly representing land drains; however, this field was heavily quarried for aggregate during construction of RAF Locking.	Impact on N hedge boundary and linear drainage features, no other impact anticipated
006	6	ST 34401 58886 -ST 34381 59044	Shown as two separate fields on the Hutton parish tithe map (1838). No features noted within the field; however, the two substantial field boundaries to the N and S, both of which will be impacted by the pipeline, appear to be of some	Impact on N and S hedge boundaries, no other impact anticipated



FIELD NO.	PLATE NO.	GRID REF.	DESCRIPTION	IMPACT
			antiquity based on construction: that section of the northern boundary impacted by the pipeline comprised a substantial hedge bank and ditch of some 4-5m width, with adjoining hedgerow to W possibly of more recent origin.	
007	7	ST 34381 59044 – ST34333 59398	One of a series of N-S aligned narrow linear field enclosures depicted on the 1838 parish tithe map. Some areas of disturbance observed but no features identifiable as being of archaeological significance	Impact on NE and S hedge boundaries. No other impact anticipated
008	N/A	N/A	Access currently denied	N/A
009	N/A	N/A	Access currently denied	N/A
010	N/A	N/A	Access currently denied	N/A
011	N/A	N/A	Access currently denied	N/A
012	N/A	N/A	Access currently denied	N/A
013	N/A	N/A	Unaffected by pipeline route	N/A
014	N/A		Unaffected by pipeline route	N/A
015	N/A		Unaffected by pipeline route	N/A
016	N/A		Unaffected by pipeline route	N/A
017	N/A		Unaffected by pipeline route	N/A
018	N/A		Unaffected by pipeline route	N/A
019	N/A		Unaffected by pipeline route	N/A
020	-	ST35198 59580 – ST35242 59552	One of a series of elongated linear field enclosures aligned NNW-SSE shown on the parish tithe map and preserved largely intact. Bounded to SSW, NNE & NNW by substantial hedges; those on the NNW & NNE sides will be impacted by the pipeline. An elongated rectilinear area of probable cultivation disturbance was identified in centre of field at ST 35287 59560; however, this would appear to lie outside the line of the pipeline route.	Impact on NNW and NNE hedge boundaries. No other impact anticipated.
021	N/A		Access currently denied	N/A
022	13	ST 35266 59580 – ST35314 59584	One of a series of elongated linear field enclosures aligned NNW-SSE shown on the parish tithe map and preserved largely intact. Bounded to NNW and SSW by substantial hedges and to the E by the Hutton & Locking Rhyne, forming the parish boundary. Some evidence of disturbance in	Impact on SSW hedge boundary. No other impact anticipated (including the rhyne feature)



FIELD NO.	PLATE No.	GRID REF.	DESCRIPTION	IMPACT
			centre of field. Hedgerow on SSW will be impacted by the pipeline. No direct impact on the rhyne anticipated.	
023	N/A		Unaffected by pipeline route	N/A
024	N/A		Unaffected by pipeline route	N/A
025	N/A		Unaffected by pipeline route	N/A
026	N/A		Unaffected by pipeline route	N/A
027	N/A		Unaffected by pipeline route	N/A
028	N/A		Unaffected by pipeline route	N/A
029	N/A		Access currently denied	N/A
030	N/A		Access currently denied	N/A
031	N/A		Access currently denied	N/A
032	16	ST 36726 59457 - ST 37123 59497 (to junction with N spur) & ST37147 59481 (to field boundary)	Elongated curvilinear E-W aligned field enclosure shown in its present form on the parish tithe map. Bounded to the N by the Hutton & Locking parish boundary (which also marked the southern boundary of the medieval manor of Locking) which along this section appears to comprise a tree-lined bank and a shallow depression running parallel to it, interpreted as a possible hollow-way feature. The field boundary to the W comprises a rhyne with sparse remains of low hedgerow trees and shrubs. The E field boundary comprises a low hedgebank.	Impact on N, W and E hedge boundaries (the N boundary incorporating the remains of a bank and possible hollow-way) No other impact anticipated.
033	17	ST37147 59481 – ST37385 59402	Elongated curvilinear field enclosure aligned roughly WNW-ESE. The Hutton & Locking parish boundary forms the NNE extent of the field; however, the pipeline route does not appear to cross this field boundary	Impact on E and W hedge boundaries. No other impact anticipated.
034	18	ST 37385 59402 – ST37500 59350	Rectilinear field enclosure depicted as such on the parish tithe map. Crossed by a series of linear depressions indicative of drainage running NNE-SSW.	Impact anticipated on E and W hedge boundaries and on linears running NNE-SSW across field.
035	19 & 20	ST37500 59350 – ST37588 59308	Small polygonal field enclosure tapering to E. Crossed by N-S linear drainage features. Hedgerow to NE largely overgrown with a mixture of mature trees and shrub species. No features of archaeological significance identified; oval depression (possible	Impact anticipated on N-S linear features crossing field



FIELD NO.	PLATE No.	GRID REF.	DESCRIPTION	IMPACT
			relict pond feature) noted adjacent to NE boundary hedge. Pipeline crosses field boundary to NW.	
036	20	ST37588 59308 – ST37598 59304	Comprises a small triangular area of land situated between Banwell Road and field enclosure 035. No discernible features were identified in this area.	Impact anticipated on E hedge boundary. No other impact anticipated
037	21	ST 37614 59304 – ST37633 59296	Small area of light woodland immediately to E of Banwell Road. A single row of mature trees stands along the E perimeter, four of which are due to be removed during the groundworks.	Impact anticipated on trees marking E field boundary. No other impact anticipated
038	21 & 22	ST37633 59296 – ST37756 59375	Rectangular field enclosure aligned N-S parallel to Banwell Road and adjoining the A371 to the N. The pipeline enters this field through the field boundary on the western side, prior to which it crosses a N-S section of the Grumblepill Rhyne, which constitutes the Banwell parish boundary. A large circular feature of roughly 33m diameter is visible on aerial photography directly within the route of the pipeline (centred approximately at ST 37658 59298); however, no surface indications of this feature were evident during the Walkover Survey. A substantial hedgerow and bank aligned N-S cross the pipeline route along the eastern perimeter of this field at ST 37757 59280	Impact anticipated on W field boundary and E hedge bank boundary, and on possible circular feature identified from aerial photos. No other impact anticipated
039	23	ST37756 59375 – ST37863 59265	Rectangular field enclosure aligned N-S adjoining the M5 motorway on the E side. The Banwell parish tithe map of 1838 shows this to have been a much larger field prior to motorway construction, encompassing the small enclosure 042a to the E	Impact on W hedge boundary, no other impact anticipated
040	N/A	N/A	Unaffected by pipeline route	N/A
041	-	ST37863 59265 – ST37924 59271	Existing section of the M5 motorway extending N-S with associated landscaping works on either side of the carriageway. Bisepts field shown	No impact anticipated



FIELD NO.	PLATE NO.	GRID REF.	DESCRIPTION	IMPACT
			on tithe map to create two separate enclosures (039 & 042a) and also truncates field 042 on western side.	
042a		ST37924 59271 – ST37978 59272	No archaeological features recorded. Heavily disturbed due to deposition of motorway construction material, being subsequently landscaped.	No impact anticipated
042	N/A		Access currently denied	N/A
043	N/A		Unaffected by pipeline route	N/A
044	24	ST38231 59350 – ST38317 59362	<p>Large irregular field enclosure currently under arable cultivation shown as two separate fields on the Banwell parish tithe map of 1838. The pipeline enters this field at the point where it crosses the A371 road.</p> <p>No features of archaeological significance were observed; however, the historic map evidence indicates that this area has undergone significant reorganisation in terms of road layout and settlement. The parish tithe map shows the junction at the southern end of Summer Lane, now straight, turning E and then S to form a dog-leg, with settlement either side. This layout is shown also on early editions of the OS mapping, although by 1960 the present layout is in place, with the original line of the road preserved as a footpath.</p> <p>On the western side of the junction, the tithe map depicts a house and orchard owned and occupied, according to the apportionment, by one Edmund Fry, while to the E another dwelling and orchard are shown owned and tenanted by a John Ford, who also owned the larger field to the N, named 'Home Ground'. None of these properties and enclosures (apart from 045) appears to survive but it is quite possible that buried remains will be impacted by the pipeline at this point</p>	Impact anticipated on S and E hedge boundaries and deserted post-medieval settlement site at S end of field enclosure.
045	24	ST38317 59362 –	Small overgrown enclosure adjacent to the A371 road that appears to	Impact anticipated on post-medieval



FIELD NO.	PLATE NO.	GRID REF.	DESCRIPTION	IMPACT
		ST38371 59386	represent the approximate location of a former farmstead named 'Bay Tree Farm' on the OS 1 st edition 1:2,500 map of 1885. This site is also shown on the parish tithe map, at which time it appears to have been an orchard.	farmstead site
046	25	ST38371 59386 – ST38511 59451	<p>Shown as two fields on the Banwell parish tithe map of 1838, although by the time of 1885 OS 1st Edition 1:2,500 map these had been amalgamated. The smaller of the two enclosures lay to the N and the pipeline passes close to the boundary between the two. Evidence of this former field boundary, possibly a drainage feature, was clearly identifiable during the Walkover Survey (extending approximately from ST38498 59460 to ST38425 59460). This former field boundary is not directly impacted by the pipeline; however, the route does cross the line of an additional boundary running N-S, now no longer present but shown on the 2nd Edition OS 1903 1:2,500 map.</p> <p>Other linear drainage features were noted running N-S across the field and these also lie on the line of the proposed water pipe.</p> <p>Additionally, a small, roughly circular, tree-covered feature was noted at ST38429 59440. The pipeline passes close to this feature, which appears on the 1885 1st Edition OS map but not on the earlier parish tithe map</p>	Impact anticipated on E and W hedge boundaries, on relict linear field boundary/drainage features.
047	26	ST38511 59451 – ST38649 59472	The pipeline crosses this field to intersect with the field boundary on the E side at ST38647 59474, which it will directly impact. Evidence of linear drainage features was noted.	Impact anticipated on E and W hedge boundaries and on linear drainage features
048	-	ST38649 59472 – ST38717 59482	Shown as three separate enclosures on the Banwell tithe map (1838). The enclosure boundary closest to the pipeline route appears as a dotted line on the tithe map, probably	Impact anticipated on drainage features; no other impact anticipated



FIELD NO.	PLATE NO.	GRID REF.	DESCRIPTION	IMPACT
			<p>indicating a drainage channel, slight evidence of which survives. By the time of the 1885 1st Edition OS map, this boundary is no longer indicated. The modern mapping shows the field as a single enclosure.</p> <p>The pipeline route passes via the gateway into the adjoining field 049 and thus appears not to impact upon the hedgerow separating the two fields.</p>	
049	-	ST38717 59482 – ST38719 59493	<p>From this point, the historic field pattern is predominantly one of N-S aligned linear fields interspersed with more rectilinear enclosures.</p> <p>The parish tithe map shows field 049 as comprising two separate linear enclosures running N-S, adjoining Knightcott Road to the S. This pattern is shown also on the 1885 1st Edition OS map. Modern mapping, however, shows these fields to have been amalgamated and to be truncated at the S end by the expansion of Banwell along Knightcott Road.</p> <p>It appears that the pipeline passes immediately to the N of 049, running along the hedge boundary with 050a. There would thus appear to be no direct impact on this field apart from where it enters and exits the field in the NW corner</p>	N/A
050a	27 & 28	ST38719 59493 – ST38909 59511	<p>The pipeline runs along the S boundary of this field, which is shown as two separate enclosures both on the parish tithe map and on the 1885 OS 1st Edition map. The historic pattern was retained until the latter part of the 20th century and is shown for example on the 1960-62 1:10,560 OS; however, by 1973 the present pattern had been established.</p> <p>From the SE corner of field 050a, the pipeline crosses the existing field</p>	Impact anticipated on S hedge boundary



FIELD NO.	PLATE No.	GRID REF.	DESCRIPTION	IMPACT
			boundary into field 050, which it then traverses for a short distance to the point at which it crosses the field boundary into 051	
050	28	ST38909 59511 – ST38949 59513	The pipeline traverses the NE extent of this field for a distance of approximately 40m before intersecting with the hedge boundary adjoining 051. A semicircular depression (possibly a pond feature) was noted immediately to the E of this crossing point; however, no features of clear archaeological significance were identified.	Impact on E hedge boundary.
050b	N/A	N/A	Unaffected by pipeline route	N/A
051	29	ST 38957 59498 - ST38981 59466	The pipeline proceeds for approximately 43m diagonally across the SW corner of the field. Apart from established hedgerows, which are shown on the Banwell parish tithe map (1838) and subsequent editions of the OS, no features were noted.	Impact anticipated on S and W hedge boundaries. No other impact anticipated.
052	-	ST38995 59453 – ST39053 59457	This field is not shown as a separate enclosure on the historic map evidence. The 1960-62 1:10,560 OS shows the present subdivisions but the area is largely undeveloped farmland at this time. By 1973, however, these fields had been truncated by development to the N of Knightcott Road, creating the present pattern of enclosure. Based on the historic map evidence, therefore, no historic hedgerows will be impacted in this area	No impact anticipated
053	30	ST39053 59457 – ST39235 59469	Field truncated along its southern extent by modern development extending W of Wolvershill Road, which, according to the map evidence, appears to date from the 1960s or early 1970s. No features of archaeological significance were visible during the course of the Walkover Survey.	No impact anticipated
054	31	ST39235 59469 – ST39397	Field truncated by modern development at southern extent, as evidenced by comparison with	No impact anticipated



FIELD NO.	PLATE NO.	GRID REF.	DESCRIPTION	IMPACT
		59453	historic mapping. Shown as one large field on the parish tithe map and OS 1 st edition 1:2,500 map of 1885 but as two separate enclosures on the OS 2 nd Edition 1903 1:2,500 map although a reorganisation had taken place associated with development activity by 1973. No features of archaeological significance were visible during the course of the Survey.	
056	N/A	N/A	Unaffected by pipeline	N/A
057	N/A	N/A	Unaffected by pipeline	N/A
058	32	ST39531 59341 – ST39720 59424	Field located NW of Banwell Roman Villa Scheduled Area, evidently unaffected by development activity to the S associated with settlement expansion during the course of the 20 th century. A number of undulations of indeterminate date and function were visible in places along the course of the route, together with a more pronounced series of three parallel linear features aligned NNW-SSE & centred roughly on ST39705 59402, of uncertain function (possibly relict drainage or cultivation features).	Impact anticipated on relict drainage or boundary/cultivation features
058a	33	ST39720 59424 – ST39786 59432	Field located N of Banwell Roman Villa Scheduled Area & terminating at the River Banwell to the E. A number of undulations of unknown origin were evident extending across the field, together with a series of regularly spaced N-S linear depressions, centred roughly on ST39738 59472, of uncertain function (presumably drainage features).	Impact anticipated on features noted
059	34 & 35	ST39786 59432 – 39889 59417	Field encompassing the Scheduled Area of Banwell Roman Villa, with the pipeline route running N of and approximately 5m outside its northern extent. A shallow, roughly semicircular depression adjacent to the E boundary of the field was noted, measuring approximately 97m in diameter. The date and function of this feature remain uncertain; it could	Impact anticipated on semicircular depression adjacent to E boundary of field



FIELD NO.	PLATE NO.	GRID REF.	DESCRIPTION	IMPACT
			represent a relict cultivation feature or enclosure possibly associated with the nearby Roman villa complex	
060	N/A	N/A	Unaffected by pipeline	N/A
061	N/A	N/A	Unaffected by pipeline	N/A
062	N/A	N/A	Access currently denied	N/A
063	N/A	N/A	Access currently denied	N/A
101	8	ST34333 59398 – ST34476 59314	Evidence of a network of shallow linear depressions evidently linked to drainage extending across the field. Substantial hedge and water-filled ditch marking E boundary of field. No evidence of amalgamation of field enclosures between publication of the parish tithe map and the 1 st edition 1:2,500 OS map of 1885.	Impact anticipated on E hedge/ditch boundary feature and linear depressions extending across field
102	9	ST34476 59314 – ST34635 59350	Network of linear depressions evidently linked to drainage extending across the field. Deep water-filled ditch, partly tree-lined, forms boundary to the E with adjoining field. No evidence of amalgamation of field enclosures between publication of the parish tithe map and the 1 st edition 1:2,500 OS map of 1885.	Impact anticipated on E hedge/ditch boundary feature and linear depressions extending across field
103	9 & 10	ST34635 59350 – ST34825 59362	Irregular shallow non-linear depressions of unknown function at ST 34827 59359. E boundary adjoining causeway (Moor Lane) marked by a substantial hedge with deep water-filled ditch on W side. No evidence of amalgamation of field enclosures between publication of the parish tithe map and the 1 st edition 1:2,500 OS map of 1885.	Impact anticipated on E hedge/ditch boundary feature and non-linear depressions extending across field
104	N/A	N/A	Unaffected by pipeline route	N/A
105	11	ST34849 59354 – ST34956 59374	Rectilinear field enclosure of improved pasture adjoining Moor Lane, which has retained its historic form, as shown on the Hutton tithe map of 1838. Evidence of linear drainage pattern noted. Some disturbance noted at ST34906 59380, possibly the result of livestock activity.	Impact anticipated on E and W hedge boundaries and linear drainage features
106	12	ST34956 59374 –	L-shaped field enclosure of improved pasture retaining its historic form as	Impact anticipated on E and W hedge



FIELD NO.	PLATE No.	GRID REF.	DESCRIPTION	IMPACT
		ST35135 59544	shown on the parish tithe map. Pipeline enters field by crossing a deep narrow water-filled drainage ditch with hedge on W side. Evidence of linear drainage features noted. No additional features of archaeological significance visible	boundaries and linear drainage features.
107	N/A	N/A	Unaffected by pipeline route	N/A
108	-	ST35135 59544 – ST35198 59580	Field enclosure retaining its form as shown on parish tithe map and successive editions of the OS. Drainage features evident crossing field. No additional features of archaeological significance identified.	Impact anticipated on hedgerow in SW and on S boundary of field. Possible impact on drainage features
109	N/A	N/A	Unaffected by pipeline route	N/A
110	14	ST35321 59596 – ST36068 59425	<p>Pipeline crosses beneath the Hutton & Locking Rhyne (parish boundary) at this point and proceeds diagonally across a large field currently under arable cultivation. Joins parish boundary at approximately ST35895 59458 and intersects with field boundary marked by a N-S drain at E extent (ST36054 59416).</p> <p>The historic map evidence indicates that this field was formerly subdivided into a number of smaller rectilinear enclosures, a pattern that appears to have survived until very recently. No features of archaeological significance were identified</p>	Impact anticipated on field boundary at E end of field. No impact on Locking Rhyne anticipated.
111	15	ST36068 59425 – ST36361 59457	Formerly shown as three distinct parcels of land, this field largely assumed its present form by the 1970s, although the small triangular enclosure at the extreme E of the field, belonging to Church Farm, was only absorbed into the larger field enclosure very recently. No discernible features of archaeological significance were identified.	Impact on hedge boundary at E end of field. No other impacts anticipated.
112	N/A	N/A	Access currently denied	N/A
113	N/A	N/A	Access currently denied	N/A
114	N/A	N/A	Access currently denied	N/A
115	N/A	N/A	Access currently denied	N/A



FIELD NO.	PLATE No.	GRID REF.	DESCRIPTION	IMPACT
116	N/A	N/A	Access currently denied	N/A
200	N/A	N/A	Access currently denied	N/A
201	N/A	N/A	Unaffected by pipeline route	N/A
202	N/A	N/A	Unaffected by pipeline route	N/A
203	N/A	N/A	Access currently denied	N/A
204	N/A	N/A	Access currently denied	N/A
205	N/A	N/A	Access currently denied	N/A
206	N/A	N/A	Unaffected by pipeline route	N/A



5. Discussion

The overall character of the landscape may be described as low-lying improved pasture, well-drained and interspersed with areas of arable cultivation, which exhibits a largely intact pattern of historic field enclosure.

This fieldscape itself is varied in character. At the western extent of the pipeline route, immediately north and west of the village of Hutton, there appears to be system of long linear fields aligned roughly northeast-southwest. The parish tithe map suggests these linear parcels of land, named 'North Hills', 'East Field' and 'West Field', may represent the survival of an earlier pattern of landholding associated with the settlement of Hutton.

To the north, Hutton Moor represents a more recent fieldscape of improved pasture and arable cultivation enclosed by a system of linear drainage channels and hedges.

The landscape further east towards Banwell exhibits a rather different pattern, comprising a more integrated system of linear and rectilinear enclosure. This, in turn, yields to a rigidly angular layout on either side of the River Banwell, representing land enclosure activity carried out in 1797.

The Walkover Survey identified evidence of an extensive network of drainage channels over much of the landscape integrated within a system of larger ditches, the most substantial being the Cross Rhine (marked as 'Uphill Rhine' on the parish tithe map) and the Hutton & Locking Rhine, which marks both the pipeline route to the south of Locking and the boundary between the two parishes. Linear features probably associated with drainage activity of medieval or post-medieval date were identified in a significant proportion of the fields traversed by the proposed pipeline route.

The pipeline route also crosses a substantial number of field boundaries, marked by hedges, banks and drainage ditches (or a combination of all three). A significant proportion of these features are depicted on the Banwell and Hutton tithe maps (both dated 1838), although there has been a sizeable degree of re-organization of field boundaries in certain places, particularly in the vicinity of the M5 and further eastwards, in the fields to the N of the A371 at Banwell which have been encroached upon by modern housing development. While some of these field boundaries may be associated with late 18th-early 19th century enclosure activity, others appear to be of considerable antiquity.

Of particular interest is the substantial hedge bank marking the boundary between the parishes of Banwell and Locking, and the southern boundary of the manor of Locking, a historic estate which belonged to Woodspring Priory in the 13th-16th centuries and was subsequently acquired by the Merchant Venturers of Bristol in the early 18th century. The pipeline route runs close to the parish boundary for a considerable distance (from Field 110, W of Church Farm, to Field 036, adjacent to Devils Elbow Farm) and a spur of the pipeline route directly crosses the boundary at NGR ST 37199 59514.



Other features of interest noted during the Walkover Survey included a circular feature of indeterminate function in the SW corner of Field 038 (NGR ST 37688 59272), the site of two deserted post-medieval dwelling/farmsteads in Fields 044 and 045 adjoining the A371 road at Knightcott (NGR ST 38319 59329) and a relict field boundary demarcating the N part of Field 046 at NGR ST 38455 59466.

Additionally, a number of potential features represented by shallow linear and non-linear depressions and undulations were identified, particularly in fields immediately north and northwest of the Banwell Roman Villa Scheduled Area. The date and function of these features remains undetermined, some of them could represent relict drainage or cultivation features or possibly relict field boundaries of medieval/post-medieval date.

Of especial interest was a large shallow semi-circular feature noted adjacent to the E boundary of Field 059 at NGR ST 39882 59414, the date and function of which remain undetermined. However in view of its immediate proximity to the Roman villa site, it is possible (though unproven) that this semicircular feature could be associated with Roman occupation or agricultural activity.

6. Mitigation

Following the submission of the Desk-Based Assessment for this project and this Walkover Survey, consultations will be undertaken with Vince Russett at North Somerset Council for the entire scheme and Hugh Beamish at English Heritage specifically for work in proximity to the Scheduled Ancient Monument to develop an appropriate mitigation programme.

English Heritage was contacted in December 2011 to obtain confirmation that the projected pipeline route is outside of the Scheduled Ancient Monument and this was confirmed on the 23rd of December. English Heritage has requested a Briefing Note to clarify what measures Border Archaeology will undertake on behalf of Bristol Water to safeguard the constraint area of the Roman Villa site.

However it is envisaged that, in order to (a) not prejudice the survival of potential extant archaeology in the fields surrounding the Banwell Scheduled Ancient Monument and (b) to provide sufficient time for appropriate mitigation, the fields 058, 058a, 059, 061 and 062 will be pre-excavated in accordance with a methodology to be agreed.

Additionally, a Watching Brief on the scheme is envisaged to encompass both stripback and trench excavation.



7. Copyright

Border Archaeology shall retain full copyright of any commissioned reports, tender documents or other project documents, under the Copyright, Designs & Patents Act 1988 with all rights reserved; excepting that it hereby provides an exclusive licence to the client for the use of the report by the client in all matters directly relating to the project as described in the Project Specification.

8. Photographic Record



Plate 1: View N from top of covered reservoir across field 002 showing possible features running E-W



Plate 2: View S towards covered reservoir and Hay Wood showing field 002



Plate 3: View SW towards covered reservoir and Hay Wood showing field 003



Plate 4: View S looking towards Hay Wood showing pipeline route across field 004



Plate 5: View N of field 005 showing result on landscape of quarrying activity during construction of RAF Locking



Plate 6: View NW showing northern hedge boundary of field 006 directly impacted by pipeline (right of picture), with adjoining hedgerow to the W (left of picture) possibly of more recent origin



Plate 7: View S of field 007



Plate 8: View N of field 101 showing linear depressions indicative of drainage activity



Plate 9: View NW showing deep water-filled ditch forming the boundary between fields 102 & 103



Plate 10: View N showing substantial drainage ditch along Moor Lane forming E boundary of 103



Plate 11: View E across field 105



Plate 12: View N showing E boundary of field 106 comprising a substantial hedgerow and ditch



Plate 13: View E towards Locking showing area of disturbance in field 022



Plate 14: View E across field 110 with the Hutton & Locking Rhyne forming the parish boundary in the foreground



Plate 15: View W along Hutton & Locking Rhyne showing route of pipeline across field 111



Plate 16: View E showing possible E-W hollow-way running along the northern perimeter of field 032 and forming the Hutton & Locking parish boundary. It is at this point that the pipeline extension crossing fields 201, 203, 204 & 206 branches off to the N



Plate 17: View W of field 033 with parish boundary shown to right of picture



Plate 18: View E along pipeline route showing linear drainage feature crossing field 034



Plate 19: View E of field 035 showing northern hedge boundary and depression, possibly a relict pond



Plate 20: View E showing small overgrown enclosure 036; also showing drainage features relating to field 035



Plate 21: View W across field 038 showing small lightly wooded enclosure 037; aerial photography shows a large circular feature of roughly 33m diameter in this field, although could not be seen at ground level and is not evident in the photograph



Plate 22: View NE showing substantial hedge forming eastern boundary of field 038



Plate 23: View NW of field 039



Plate 24: View E from 044 showing enclosure 045, which appears to represent the approximate site of a farmstead named 'Bay Tree Farm' on the OS 1st edition 1:2,500 map of 1885.



Plate 25: View W of 046 showing line of field boundary (running from bottom right to centre) marked on the parish tithe map but subsequently removed, with small, roughly circular, tree-covered feature on right of picture



Plate 26: View S showing linear N-S drainage features in field 047



Plate 27: View E in field 050a showing crossing point of pipeline located in SE corner of field



Plate 28: View W from field 050 showing crossing point where pipeline exits field 050a, with semicircular depression to left of ranging rod



Plate 29: View looking W across pasture field 051



Plate 30: View W across field 053



Plate 31: View W looking across field 054



Plate 32: View W across field 058



Plate 33: View looking E showing linear depressions in field 058a, probably representing drainage activity, & other unidentified undulations/disturbance



Plate 34: View NW of substantial ditch draining into the River Banwell & marking the boundary between fields 058a & 059



Plate 35: View E along pipeline route where it crosses 059 immediately N of the Scheduled Area with edge of shallow, roughly semi-circular feature visible in foreground



9. Bibliography

North Somerset Historic Environment Record: HER Printout

Border Archaeology, 2008, *Field Recording Manual*

Department of the Environment, 1994, *Planning Policy Guidance 15: Planning and the historic environment*

IfA, 2010, *Code of Conduct*

IfA, 2008, *Code of Approved Practice for the Regulation of Contractual Arrangements in Field Archaeology*

IfA, 2008, *Draft Standard and Guidance for the creation, preparation, transfer and deposition of archaeological archives*

Rippon, S., 2007, *Landscape, Community and Colonisation: The North Somerset Levels During the 1st to 2nd Millennia AD*, CBA Research Reports

SSEW, 1983, *Soil Map of England and Wales Scale 1:250,000*, Silsoe

10. Cartography

(All maps were obtained from Somerset Heritage Centre unless otherwise stated)

Merchant Venturers' Plan of the manor of Locking - 1745

Q/RDE/42 Plan of Banwell Waste Lands in the County of Somerset inclosed by virtue of an act of parliament - 1797

Q/RDE/70 – Locking enclosure award - 1801

D\D/Rt/M/14 - Tithe Map: Hutton - 1838

D\D/Rt/M/12 – Tithe map: Banwell - 1838

D\D/Rt/M/322 - Tithe Map: Locking - 1839

OS 1st Edition 1:2,500 map 1885

OS 2nd Edition 1:2,500 map 1902

OS 3rd Edition 1:10,560 map 1930

OS 4th Edition 1:10,560 map 1960

11. Appendix 1: Plans

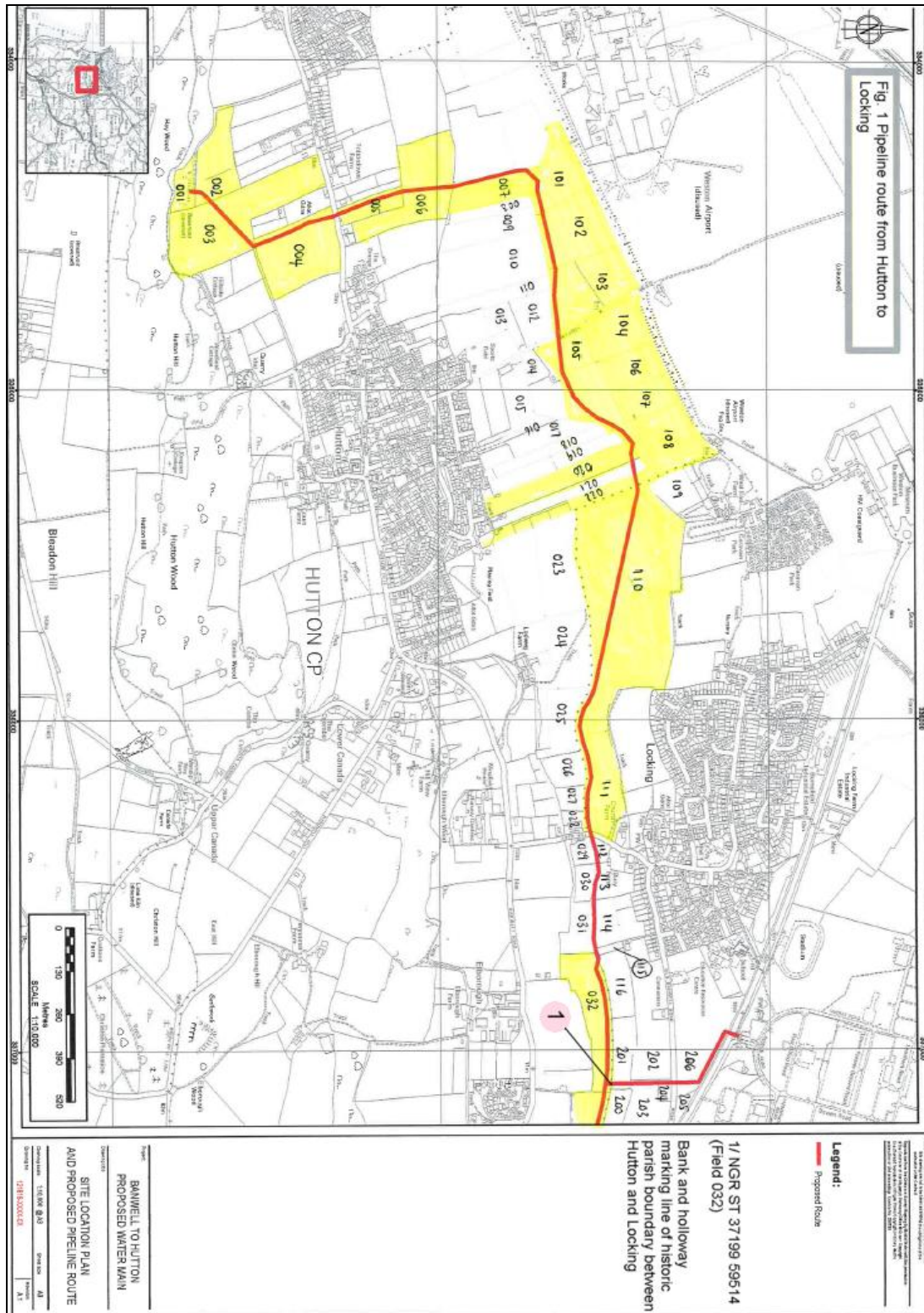


Fig. 1: Plan showing features identified during Walkover Survey on section of pipeline route from Hutton to Locking

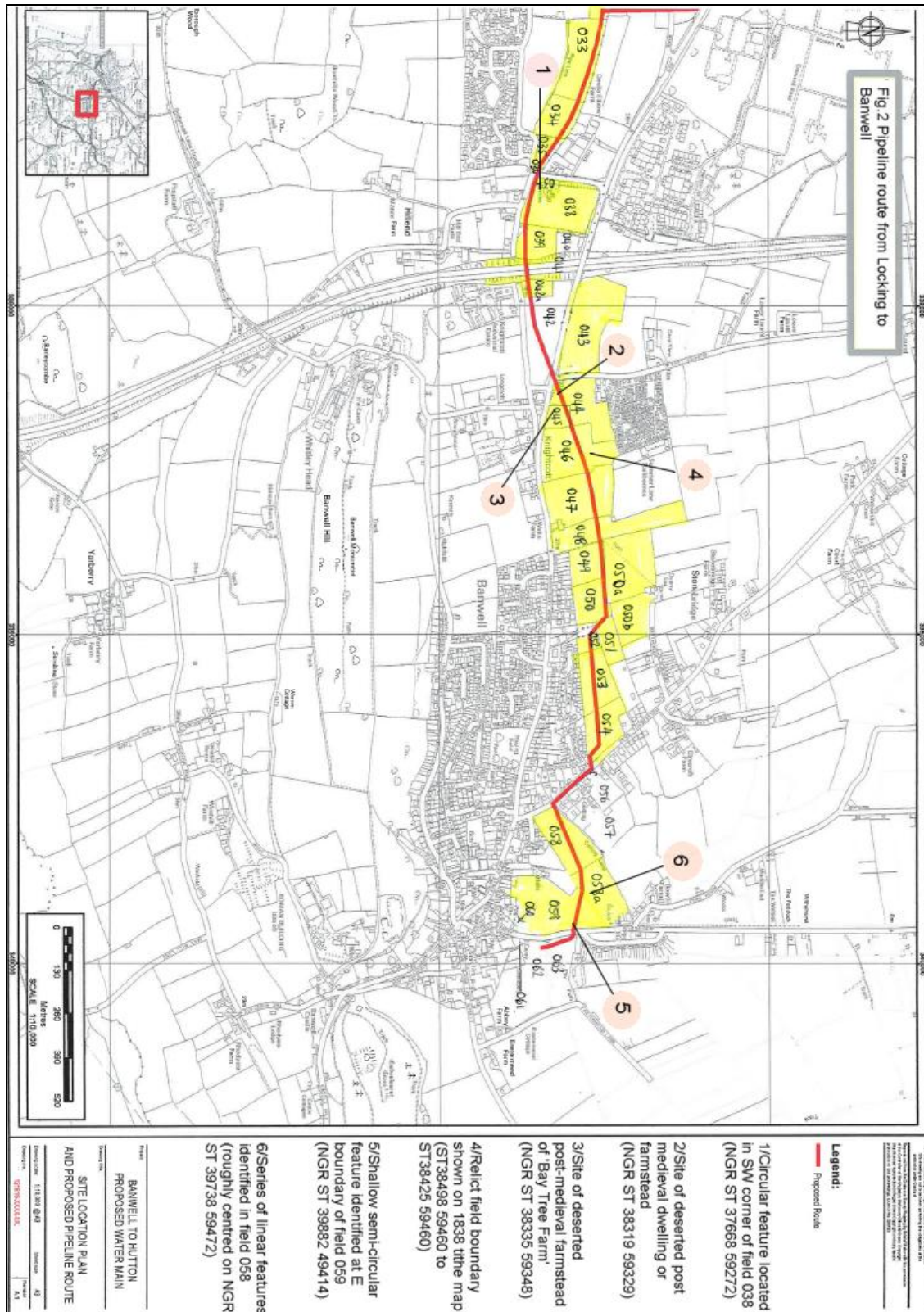


Fig. 2: Plan showing features identified during Walkover Survey on section of pipeline route from Locking to Banwell

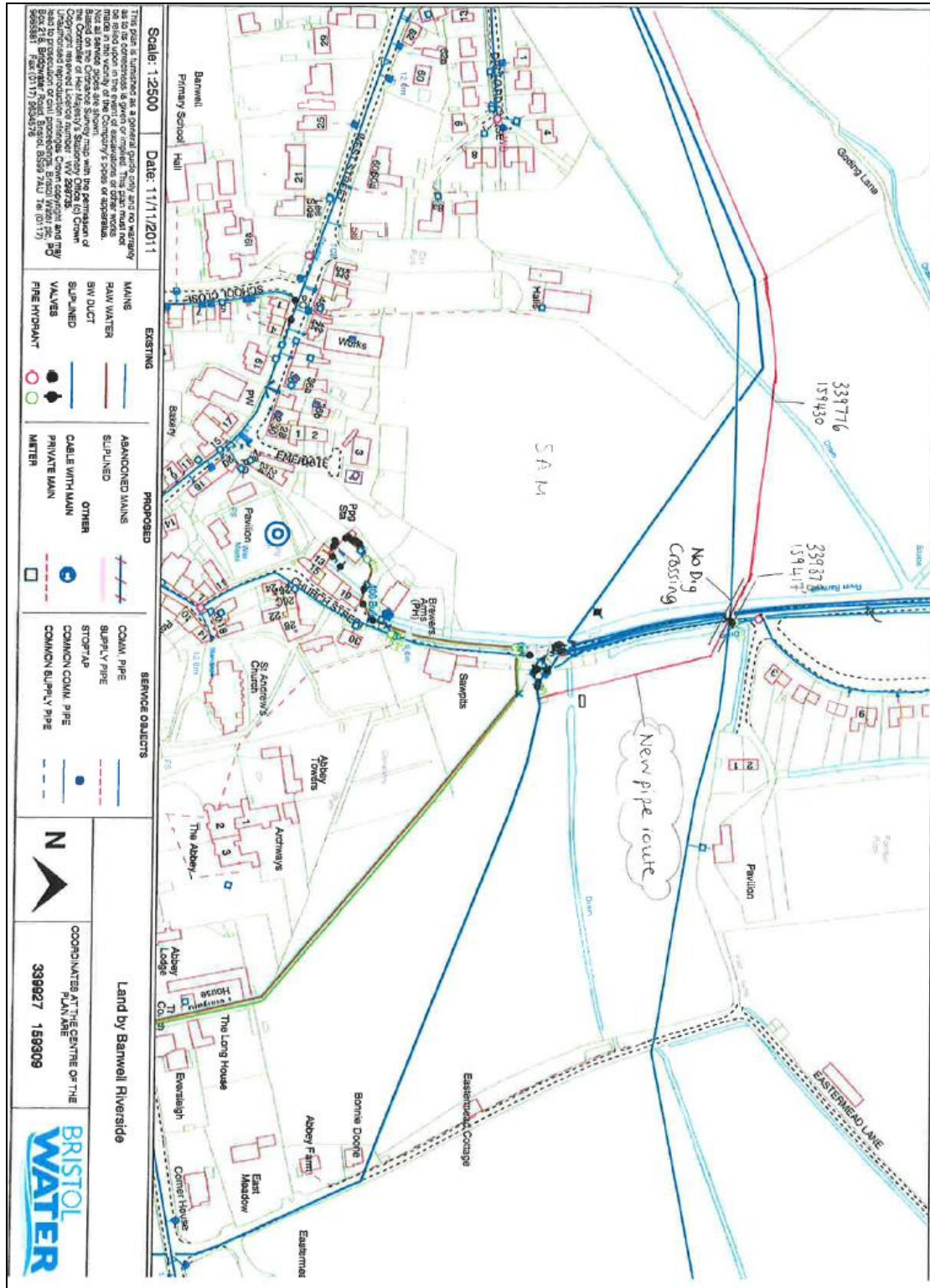


Fig. 3: Detailed plan showing section of pipeline route (marked in red) running adjacent to Scheduled Ancient Monument of Banwell Roman villa

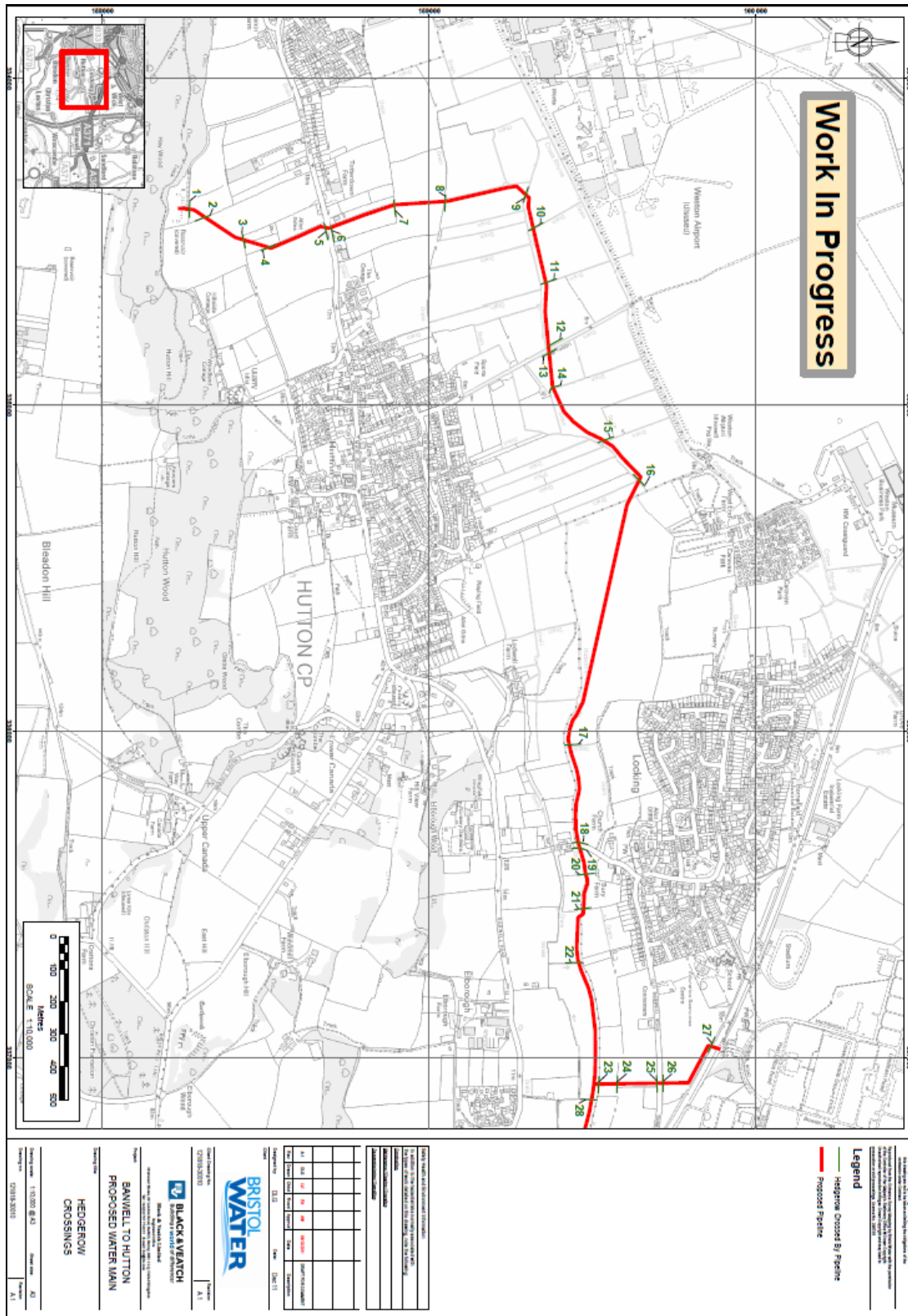


Fig. 4: Plan showing hedgerows to be removed on proposed line of pipeline route from Hutton to Locking

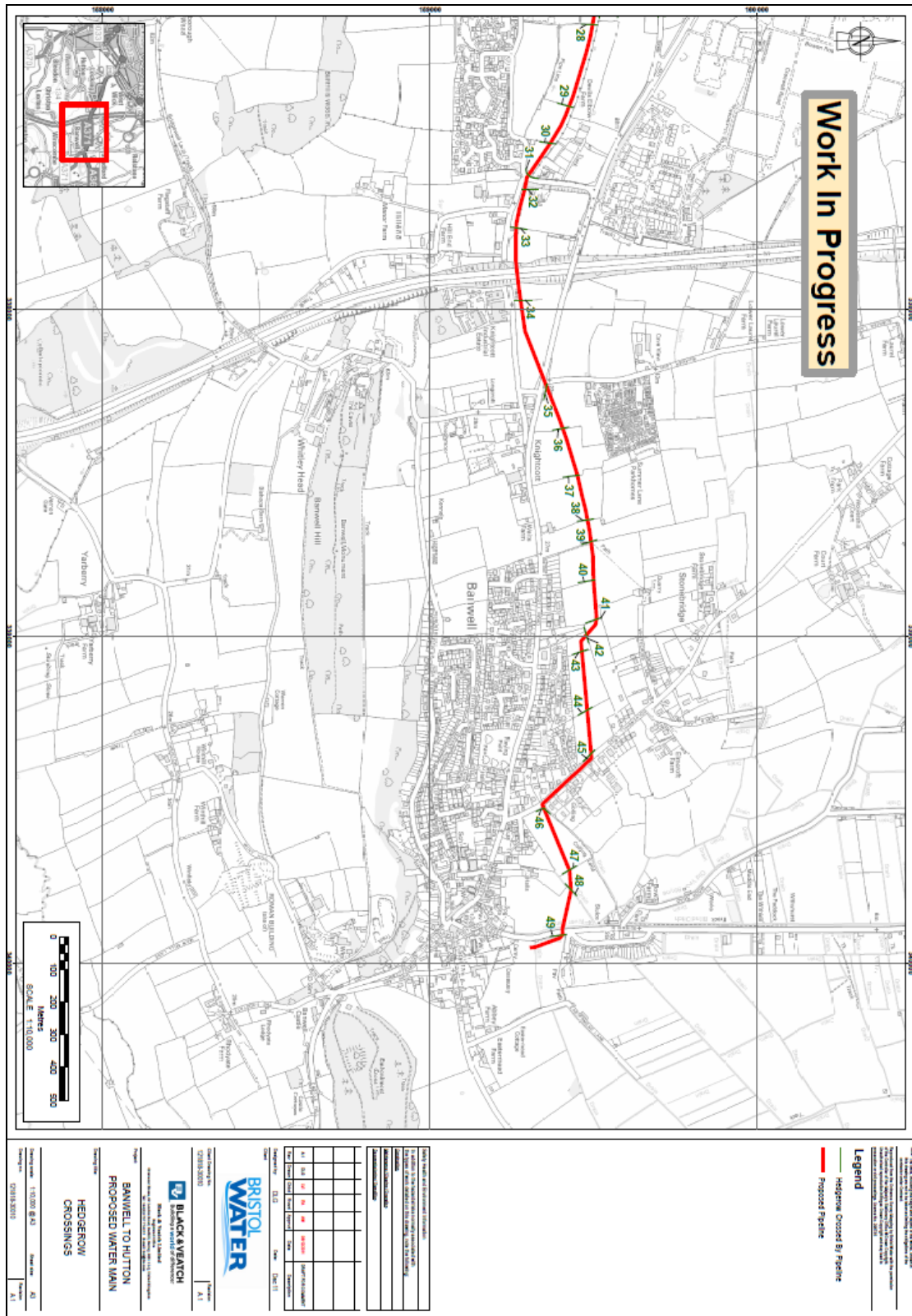


Fig. 5: Plan showing hedgerows to be removed on proposed line of pipeline route from Locking to Banwell



Document control

Job title	Archaeological Walkover Survey: Banwell to Hutton Water Main	Job No	BA1129BWBH
Report written by	<i>George Children MA MfA</i>		
Report edited by	<i>Stephen Priestley MA</i>		
Issue No	Status	Date	Approved for issue
1	Final	Jan. 2012	<i>Neil Shurety Dip M.GM Inst. M</i>