

1EW03 - Enabling Works Central AWHj

Location Specific Written Scheme of Investigation

Historic Building Recording; Historic Landscape Study and Setting Recording

Wardell Armstrong

Document no.: 1EW03-FUS-EV-REP-C000-009804

Revision	Author	Checked by	Approved by	Date approved	Reason for revision
C01	Cat Peters	Frank Giecco	Andrew Harris	21-01-2020	First submission

Code 1 - Accepted

Contents

1	Executive Summary	1
2	Extent of Works	3
	2.1 Site Locations	3
	2.2 Overview of the Project Plans	3
3	Programme	13
	3.1 Indicative baseline programme	13
4	Topic Specific Method Statements	14
	4.1 General standards	14
	4.2 Plant and Equipment	14
	4.3 Historic Landscape Study and Setting Recording	14
	4.4 Fieldwork Deliverables	15
	4.5 Digital Deliverables	16
	4.6 The Sub-Contractor's Information Management Plan	17
	4.7 Resourcing	18
5	Interface and Communication Plan	19
	5.1 Work site interface	19
	5.2 Sub-contractor and contractor interface	19
6	Health and Safety Plan	20
	6.1 Health and Safety Values	20
	6.2 Accident and Incident Reporting	20
	6.3 RAMS	20
	6.4 Site Specific Constraints	20
7	Site Monitoring and Engagement Plan	21
	7.1 Stakeholder Engagement	21
	7.2 Community Engagement	22
8	Quality and Technical Assurance Plan	22
	8.1 The Quality Assurance Process	22
	8.2 The Quality and Technical Assurance Plan	23
9	Information Management Plan	24
10	Resource Plan	25
11	References and Glossary of Terms	26
	11.1 Terms and abbreviations	26

11.2 References	27
Figure	29
Appendix 1 Project Plans	30
Appendix 2 Change Control	31
Appendix 3 Field work sign off sheet	34
Appendix 4 U&A compliance register	36
Appendix 5 Wardell Armstrong Quality Policy	37
Appendix 6 Wardell Armstrong ICT Policy	38
Appendix 7 Wardell Armstrong Health and Safety Policy Statement	39
Appendix 8 Wardell Armstrong Health and Safety Policy	40
Appendix 9 Wardell Armstrong Project Delivery Team CVs	41
Appendix 10 RAMS	42

List of Tables

Table 1: Location specific information for the works sites	3
Table 2: Project Plans to which this LS-WSI applies and their delivery groupings	4
Table 3: Rational of AWH works package delivery groupings	4
Table 4 Historic Landscape Study – schedule of deliverables	15
Table 5: Historic Building Recording – schedule of deliverables	16

1 Executive Summary

- 1.1.1 This document comprises the Location Specific Written Scheme of Investigation (LS-WSI) for a package of works of built heritage mitigation for a total of ten sites located along the route of Phase One of High Speed Two (HS2). The LS-WSI sets out the methodology, deliverables, programme, health, safety and environmental requirements, resources and interfaces necessary to deliver the works. Construction activities associated with HS2 will impact heritage assets either through changes to the landscape affecting setting or through demolition of assets. The Project Plan for each site established the nature of construction impacts and the scope, aims and objectives of the works. Each of the project plans have been approved by HS2 and together define the scope of this package of works.
- 1.1.2 The sites to which this package relate are located in the counties of Northamptonshire and Buckinghamshire and the works comprise four historic landscape study and setting recording works (HLS) and six historic building recording works (HBR).
- 1.1.3 The four historic landscape study and setting recording works encompass the following locations:
- Wendover Dean, Buckinghamshire (centred on NGR: 488499,204760).
 - Chetwode, Buckinghamshire (centred on NGR 464063,229349);
 - Radstone, Northamptonshire (centred on NGR 458453,240514); and
 - Greatworth Hall, east of Greatworth, Northamptonshire (centred on NGR 456128,242345).
- 1.1.4 The six historic building recording works are located at:
- Durham Farm, Bowood Lane, Wendover Dean, Buckinghamshire (centred on NGR: 488354,204733);
 - Road Barn Farm, London Road, Wendover, Buckinghamshire (centred on NGR: 487516,206292); and
 - The Lodge, Doddershall, Buckinghamshire (centred on NGR: 473200,219316);
 - Portway Farm, Buckinghamshire (centred on NGR 467795,226088);
 - Greatworth Park, Northamptonshire (centred on NGR: 455347,243505), and
 - The Bungalow, Calves Close Spinney, Chipping Warden, Northamptonshire (centred on NGR: 450529,249121)
- 1.1.5 The works will be undertaken by the Sub-Contractor, and are to be managed by Fusion, the Central Section Enabling Works Contractor (the Contractor). This LS-WSI has been prepared in accordance with the Technical Standards for Specification for Historic Environment Project

Plans and Location Specific Written Schemes of Investigation (Document no. HS2-HS2-EV-STD-000-000036) and guidance provided by the Generic Written Scheme of Investigation: Historic Environment Research and Delivery Strategy (GWSI:HERDS).

2 Extent of Works

2.1 Site Locations

- 2.1.1 The sites to which this package relate are located in the counties of Northamptonshire and Buckinghamshire and each are located along Phase 1 of the HS2 route (Figure 1).
- 2.1.2 Six of the work sites are located within Buckinghamshire and each are within the administrative boundary of Aylesbury Vale District Council. Four sites are in Northamptonshire, each within the administrative boundary of South Northamptonshire. A location plan for each of the site works is provided within the project plan:

Table 1: Location specific information for the works sites

Site	Scope of work	Grid ref
County: Buckinghamshire		
Administrative area: Aylesbury Vale District Council		
Durham Farm	Historic Building Recording	488354,204733
Wendoverdean	Historic Landscape Study and Setting Recording	488499,204760
Road Barn Farm	Historic Building Recording	487516,206292
The Lodge	Historic Building Recording	473200,219316
Station 53c, Portway	Historic Building Recording	467795,226088
Chetwode	Historic Landscape Study and Setting Recording	464063,229349
County: Northamptonshire		
Administrative area: South Northants District Council		
Radstone	Historic Landscape Study and Setting Recording	458453,240514
Greatworth Hall	Historic Landscape Study and Setting Recording	456128,242345
RAF Greatworth Park	Historic Building Recording	455347,243505
The Bungalow, Calves Close Spinney	Historic Building Recording	450529,249121

2.2 Overview of the Project Plans

- 2.2.1 The project plans to which this LS-WSI applies are set out in table 2. The works have been assembled into a single works package AWHj and further assembled into a series of delivery groupings.

Table 2: Project Plans to which this LS-WSI applies and their delivery groupings

Site	Scope	Project plan ref	Grouping
Durham Farm	HBR	1EW03-FUS-EV-REP-CS03_CL05-009406	AWHj (i)
Wendoverdean	HLS	1EW03-FUS-EV-REP-CS03_CL05-009407	
Road Barn Farm	HBR	1EW03-FUS-EV-REP-CS03_CL05-009408	AWHj (iii)
The Lodge	HBR	1EW03-FUS-EV-REP-CS05-007810	
Chetwode	HLS	1EW03-FUS-EV-REP-CS06_CL10-007816	
Radstone	HLS	1EW03-FUS-EV-REP-CS07_CL12-037104	
Greatworth Hall	HLS	1EW03-FUS-EV-REP-CS07_CL12-037105	
Station 53c, Portway	HBR	1EW03-FUS-EV-REP-CS06_CL09-007810	
RAF Greatworth Park	HBR	1EW03-FUS-EV-REP-CS07_CL25-002565	AWHj (iv)
The Bungalow, Calves Close Spinney	HBR	1EW03-FUS-EV-REP-CS07_CL13-004381	

2.2.2 There are three delivery groups encompassed within this LS-WSI the rationale for the groupings are set out in table 3:

Table 3: Rational of AWH works package delivery groupings

Grouping	Rationale
AWHj (i)	The landscape around Wendoverdean encompasses a number of individual farmsteads of a comparable date each located within an enclosed landscape. Assets at Wendoverdean Farm and Upper Wendoverdean Farm are grade II listed. The farmstead at Durham Farm is non-designated. The route of HS2 cuts through the landscape and requires the demolition of Durham Farm affecting the setting of the designated assets. The works comprise historic landscape study to include a record of the setting of the designated assets and a historic building record of Durham Farm
AWHj (iii)	This delivery group comprises works of historic landscape study and building recording at locations that evidence an evolving landscape from the late medieval and post-medieval periods through to 18 th century enclosure and the establishment during the 19 th century and 20 th century of new farmsteads and dwellings. Landscapes at Chetwode and Greatworth Hall have previously been truncated through 19 th century railway construction and at Doddshall the arrival of the railway necessitated the re-routing of the principal drive and the construction of a new entrance Lodge.
AWH (iv)	Each of the assets within this group are 20 th century conflict sites which are to be demolished. The project plans define similar research objectives and study would further reveal the significance of these assets and their purpose.

2.2.3 The scope of works for each site is detailed within the project plans and summarised below.

Durham Farm

2.2.4 Durham Farm is a non-designated asset and comprises a number of buildings including a farmhouse and a range of barns. The farm has 18th century origins. A level III historic building is required comprising a photogrammetric record, a comprehensive photographic record and a fully illustrated and referenced analytical written account.

2.2.5 The aims of this work are to:

- Record the character and form of the buildings at Durham Farm, and identify its original layout and the date, sequence, development and function of each structure, thereby better revealing significance and;
- Provide, through cartographic research and analysis of other documentary sources, a narrative account of Durham Farm, including consideration of its relationship to adjacent assets.

2.2.6 Through detailed recording and analysis, the works will provide information that would contribute to the delivery of GWSI: HERDS objective

- KC52: Understanding the pattern, form and function of post-medieval rural vernacular architecture: can we identify regional, intra-regional or temporal variations?

2.2.7 The historic building works are to be analysed in conjunction with works of Historic landscape study to be undertaken at Wendoverdean (see below) which encompasses farmsteads at Upper Wendoverdean and Wendoverdean. These two designated assets are comparable in date and form to that at Durham Farm and the research provides an opportunity for a comparison to be made in terms of origins and development.

Wendoverdean

2.2.8 Historic landscape Study at Wendoverdean will encompass the landscape setting of the designated assets at Wendoverdean Farm and Upper Wendoverdean Farm as well as the non-designated asset at Durham Farm. The assets form part of an 18th century enclosed landscape which will experience change and truncation as a consequence of the HS2 scheme. The works of historic landscape study are required to identify, locate, map and record features of historic landscape importance. Site works are to comprise both a walkover as well as aerial survey through use of UAV (drone). The site works are to be complemented through documentary research including historic maps and other archival sources and the results presented in a fully illustrated analytical report.

2.2.9 The aims of the work are to

- Document the present character and appearance of the landscape;
- Record, analyse and assess historic landscape features identified through archival

research and field walkover; and

- Identify those elements of the landscape which may have physical, functional or historical associations with the farmsteads; and
- Provide through use of historic maps and other documentary sources a narrative account of the development of the landscape setting of assets at Wendoverdean.

2.2.10 Through detailed recording and analysis, the works will provide information that would contribute to the delivery of GWSI: HERDS objective

- KC52: Understanding the pattern, form and function of post-medieval rural vernacular architecture: can we identify regional, intra-regional or temporal variations?

2.2.11 The works of historic landscape study are to be analysed in conjunction with works of historic building recording to be undertaken in advance of the demolition of Durham Farm. Durham Farm forms an integral part of this landscape and is located within the setting of the two designated farmsteads at Wendoverdean and Upper Wendoverdean.

Road Barn Farm

2.2.12 Road Barn Farm is a non-designated asset comprising an early 19th century timber and flint built barn and associated walled yard and an early 20th century dwelling. Site observation during preparation of the project Plan has confirmed a high level of survival and good retention of features within both structures. A level III historic building is required comprising a photogrammetric record, a comprehensive photographic record and a fully illustrated and referenced analytical written account.

2.2.13 The aims of this work are to:

- Record the character and form of the buildings and identify the plan form, date, sequence, development and function of each structure, thereby better revealing significance
- Record boundary walls, orchard areas, tracks etc; which comprise the setting of the farmstead and contribute to its historical significance and;
- Provide, through cartographic research and analysis of other documentary sources, a narrative account of the buildings including consideration of its relationship to adjacent land.

2.2.14 Through detailed recording and analysis, the works will provide information that would contribute to the delivery of GWSI: HERDS objective

- KC52: Understanding the pattern, form and function of post-medieval rural vernacular architecture: can we identify regional, intra-regional or temporal variations?

The Lodge

- 2.2.15 The Lodge is a non-designated asset built in 1900 as a lodge gate to Doddershall House. The lodge was constructed as a consequence of the need to provide a new approach drive to Doddershall House following the truncation of the original late medieval approach that was truncated by construction of the Great Central Railway in 1899. The Lodge retains much of its early 20th century character and is a good and relatively unaltered example of the local vernacular with very clear Arts and Crafts influence. There is evidence to suggest that some of the fabric and fittings incorporated into the building derived from Doddershall House which was undergoing refurbishment at the time the lodge was being constructed. A level III historic building is required comprising a photogrammetric record, a comprehensive photographic record and a fully illustrated and referenced analytical written account.
- 2.2.16 The aims of this work are to:
- Record the character and form of The Lodge and identify its original layout;
 - Provide a detailed record of fixtures and fittings and determine those that may have been derived from Doddershall House, and
 - Provide, through cartographic research and analysis of other documentary sources, a narrative account of the Lodge, including consideration of its relationship to Doddershall House, the southern approach drive and adjacent railway assets such as the road overbridge.
- 2.2.17 Through detailed recording and analysis, the works will provide information that would contribute to the delivery of GWSI: HERDS objective
- KC43: Investigate the link between the development of the railways and broader changes in the historic landscape, such as urban settlement expansion and the decline of the canal network, and
 - KC52: Understanding the pattern, form and function of post-medieval rural vernacular architecture: can we identify regional, intra-regional or temporal variations?

Chetwode

- 2.2.18 Historic landscape Study at Chetwode will encompass the landscape setting of Chetwode Conservation Area and a number of designated and non-designated heritage assets. The landscape preserves the earthwork remains of medieval open fields in the form of ridge and furrow as well as other features relating to a late medieval or early post medieval ecclesiastic holding. The landscape evolved to its present extent during the 18th century and 19th centuries with the establishment of a number of enclosure farmsteads. Parts of the landscape were truncated by the construction of the Great Central Railway in 1899 and further changes will arise as a consequence of HS2 construction activities.

- 2.2.19 The works of historic landscape study are required to identify, locate, map and record features of historic landscape importance. Site works are to comprise both a walkover as well as aerial survey through use of UAV (drone). The site works are to be complemented through documentary research including historic maps and other archival sources and the results presented in a fully illustrated analytical report.
- 2.2.20 The aims of the work are to
- Document the present character and appearance of the landscape;
 - Record, analyse and assess historic landscape features identified through archival research and field walkover;
 - Identify those elements of the landscape which may have physical, functional or historical associations with the medieval and post-medieval village of Chetwode; and
 - Provide through use of historic maps and other documentary sources a narrative account of the development of the landscape setting of assets at Chetwode.
- 2.2.21 Through detailed recording and analysis, the works will provide information that would contribute to the delivery of GWSI: HERDS objective
- KC34: Undertake research and investigation into medieval manorial complexes. What was their origin, development and impact on the landscape
 - KC40: Identify patterns of change within medieval rural settlement from the 11th to mid-14th century and
 - KC52: Understanding the pattern, form and function of post-medieval rural vernacular architecture: can we identify regional, intra-regional or temporal variations?

Radstone

- 2.2.22 Historic landscape Study at Radstone encompasses the landscape setting of the medieval village of Radstone. Radstone has medieval origins and retains several heritage assets including the grade I listed Church of St Lawrence which has 12th century origins, the non-designated late medieval vicarage, a post-medieval farmstead and a series of 19th century estate houses. The landscape beyond the settlement retains the earthwork remains of former land divisions and ridge and furrow. In its present state the appearance of the landscape is largely a result of 18th and 19th century enclosure.
- 2.2.23 The works of historic landscape study are required to identify, locate, map and record features of historic landscape importance. Site works are to comprise both a walkover as well as aerial survey through use of UAV (drone). The site works are to be complemented through documentary research including historic maps and other archival sources and the results presented in a fully illustrated analytical report.
- 2.2.24 The aims of the work are to

- Document the present character and appearance of the landscape;
- Record, analyse and assess historic landscape features identified through archival research and field walkover;
- Identify those elements of the landscape which may have physical, functional or historical associations with the medieval and post-medieval village of Radstone; and
- Provide through use of historic maps and other documentary sources a narrative account of the development of the landscape setting of Radstone.

2.2.25 Through detailed recording and analysis, the works will provide information that would contribute to the delivery of GWSI: HERDS objective

- KC40: Identify patterns of change within medieval rural settlement from the 11th to mid-14th century and
- KC52: Understanding the pattern, form and function of post-medieval rural vernacular architecture: can we identify regional, intra-regional or temporal variations?

Greatworth Hall

2.2.26 Historic landscape Study at Greatworth Hall encompasses a landscape extending south west of the grade II listed Greatworth Hall towards the village of Greatworth. The landscape was enclosed during the 17th century and a number of field boundaries of this period have been retained. In addition to the 17th century remains the landscape also preserves the earthwork remains of a medieval open field system and possibly parts of the boundary of a 13th century deer park. Greatworth Hall and other structures within the landscape are likely to be contemporary with the landscape and define a 17th or 18th century estate. The landscape has previously been part truncated on its west side through 19th century railway construction activities and the route of HS2 will bring about further changes that would sever the relationship between Greatworth Hall and the village of Greatworth.

2.2.27 The works of historic landscape study are required to identify, locate, map and record features of historic landscape importance. Site works are to comprise both a walkover as well as aerial survey through use of UAV (drone). The site works are to be complemented through documentary research including historic maps and other archival sources and the results presented in a fully illustrated analytical report.

2.2.28 The aims of the work are to

- Document the present character and appearance of the landscape;
- Record, analyse and assess historic landscape features identified through archival research and field walkover;
- Identify those elements of the landscape which may have physical, functional or historical associations with the medieval village of Greatworth and the establishment

of an estate farm at Greatworth Hall during the 17th and 18th centuries; and

- Provide through use of historic maps and other documentary sources a narrative account of the development of the landscape setting of Greatworth Hall.

2.2.29 Through detailed recording and analysis, the works will provide information that would contribute to the delivery of GWSI: HERDS objective

- KC 34: Undertake research and investigation into medieval manorial complexes. What was their origin development and impact on the landscape,
- KC40: Identify patterns of change within medieval rural settlement from the 11th to mid 14th century and
- KC52: Understanding the pattern, form and function of post-medieval rural vernacular architecture: can we identify regional, intra-regional or temporal variations?

Station 53c, Portway Farm

2.2.30 The two structures previously a radio transmitter and generator building of 1940s construction are non-designated assets. The buildings were part of a network of transmitter and receiver stations operated by the Special Operations Executive (SOE) during the 1940s. Only three transmitter buildings were constructed and the example at Portway Farm being the latest in the series is considered the more advanced. The buildings are currently used for storage of agricultural material and it is not known to what extent evidence for fittings and fixtures may have survived. The buildings are otherwise intact.

2.2.31 A level II historic building is required comprising a drawn and photographic record and a fully illustrated and referenced analytical written account. In addition to site works there is a requirement for a programme of community engagement through an oral history project.

2.2.32 The aims of this work are to:

- Record the character, appearance and form of the former SOE transmitting station at Portway Farm, and identify the original layout and any contemporary features, materials and fittings within the buildings, specific to their purpose; and
- Provide, through analysis of archives, oral history, analysis of documentary sources and comparative analysis of similar building types, an account of the design, development and historical context of the SOE transmitter at Portway Farm

2.2.33 Through detailed recording and analysis, the works will provide information that would contribute to the delivery of GWSI: HERDS objective

- KC45: The conflicts of the 20th century define the history of modern Britain and the world: how can we achieve a greater understanding of the significance of sites associated with conflict to local communities along the route?

RAF Greatworth Park

- 2.2.34 The former accommodation block, RAF Greatworth Park, is a non-designated asset. The building was constructed in 1953 as an accommodation and recreation block part of the transmitter and receiving station at RAF Greatworth Park. RAF Greatworth Park was established during the 1940s and accommodation was originally provided in a series of Nissen huts. The current building was constructed as a replacement of the Nissen huts and was part of a comprehensive re-structuring of the station that occurred during the 1950s. RAF Greatworth Park ceased operations during the 1990s after which the buildings were converted to commercial use as part of a technology park.
- 2.2.35 The building has significance as part of a Cold War era transmitting station which operated as a satellite to the command centre at RAF Stanbridge, which by 1959 had become the 'central signals centre' of the RAF. Site observation has determined a potential for the building to retain elements of historic and architectural interest that would better reveal the significance of the building through an improved understanding of purpose and plan form layout.
- 2.2.36 The RAF Greatworth website demonstrates a strong communal value both in the collation of memoirs including photographs as well as regular reunions for veterans. It also presents an opportunity to compare the origins and development of RAF transmitter stations in comparison with SOE transmitter stations, in the Buckinghamshire/ Northamptonshire region, when considered alongside Station 53c Portway Farm, detailed above.
- 2.2.37 A level II historic building is required comprising a drawn and photographic record and a fully illustrated and referenced analytical written account. In addition to site works there is a requirement for a programme of community engagement through an oral history project.
- 2.2.38 The aims of this work are to:
- Record the character, appearance and form of the accommodation unit, and identify the original layout and any contemporary features, materials and fittings within the buildings, specific to their purpose; and
 - Provide, through analysis of archives, oral history and analysis of documentary sources, an account of the design, development and use of the building as part of the RAF Greatworth Hall site.
- 2.2.39 Through detailed recording and analysis, the works will provide information that would contribute to the delivery of GWSI: HERDS objective
- KC45: The conflicts of the 20th century define the history of modern Britain and the world: how can we achieve a greater understanding of the significance of sites associated with conflict to local communities along the route?

The Bungalow, Calves Close Spinney

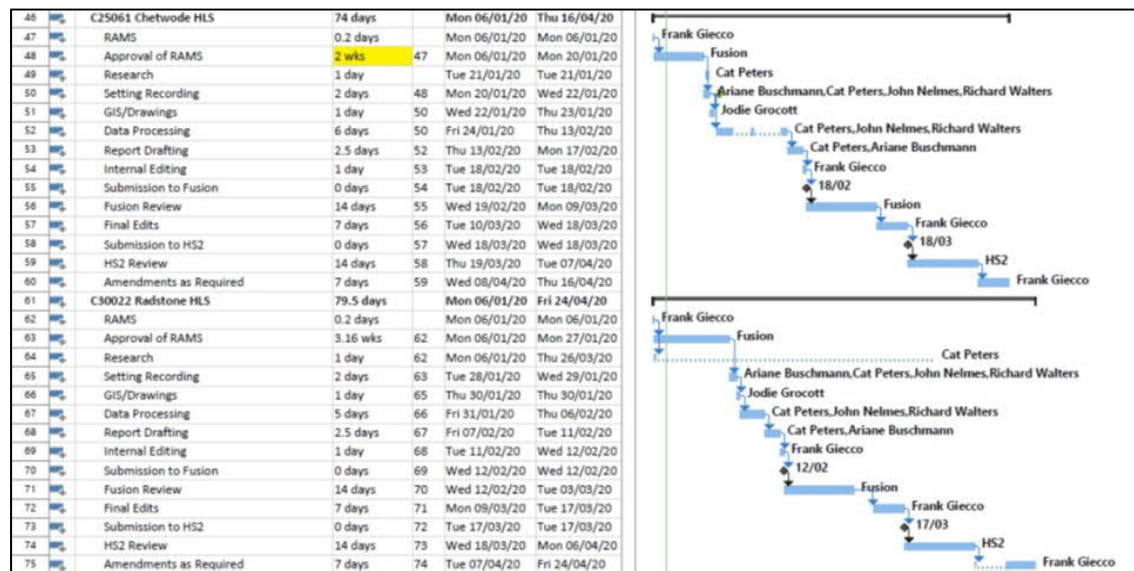
- 2.2.40 The Bungalow is a non-designated former RAF structure built during the 1940s as part of a dispersed technical site part of RAF Chipping Warden. RAF Chipping Warden was a bomber training station and in common with a number of such sites built during the early war years comprised both the main airfield site as well as a number of technical support sites dispersed in the surrounding countryside. The site at Calves Close Spinney was constructed to provide dispersed command and communal facilities. The Bungalow is the only structure within this site to be physically affected by construction activities, the remainder of the site being outside of the land required for construction of the railway. The buildings at Calves Close Spinney are of interest as part of a dispersed site an aspect of airfield planning which is not well represented in the record.
- 2.2.41 A level II historic building is required comprising a drawn and photographic record and a fully illustrated and referenced analytical written account. In addition to site works there is a requirement for a programme of community engagement through an oral history project.
- 2.2.42 The aims of this work are to:
- Record the character and form of The Bungalow and identify the original layout and any contemporary features, materials and fittings within the building, specific to its purpose; and
 - Provide, through analysis of archives, oral history and analysis of documentary sources an account of the origins of The Bungalow and its post-war development
- 2.2.43 Through detailed recording and analysis, the works will provide information that would contribute to the delivery of GWSI: HERDS objective
- KC45: The conflicts of the 20th century define the history of modern Britain and the world: how can we achieve a greater understanding of the significance of sites associated with conflict to local communities along the route?

3 Programme

3.1 Indicative baseline programme

- 3.1.1 A programme for all works is dependent on matters such as possession, specifically the vacant possession of buildings. As these matters are not at present finalised it is not possible to provide a full programme for all of the works included within this package.
- 3.1.2 Works of historic landscape study for Chetwode and Radstone are currently planned for commencement during January 2020 and access for Chetwode has been arranged for Wednesday 22nd January 2020 and for Radstone, on 24th January 2020 (Plate 1).

Illustrative programme showing duration of works at Chetwode and Radstone



- 3.1.3 Works encompass both the ground-level and aerial-level survey teams, representing a total of four staff on site, two at Wardell Armstrong (Cat Peters and Ariane Buschmann) and two sub-contractors from Commendium Ltd (John Nelmes and Richard Walters)
- 3.1.4 The Resource Plan (Section 10), supported by the Curriculum Vitae (Appendix 9), demonstrate a wider Wardell Armstrong team capable of undertaking the survey work, should the dates for access coincide, or should any of the staff identified above be unavailable.
- 3.1.5 The programme includes the processing of data and compilation of final reports following on from site works, with submission and editing time included, which would be subject to Fusion timetables and programming. This programme anticipates that the final reports for both projects could be issued by 24th April 2020.

4 Topic Specific Method Statements

4.1 General standards

4.1.1 All works of HLS and HBR will be undertaken in accordance with the overarching methodologies and specifications produced by HS2, namely the GWSI: HERDS (HS2-HS2-EV-STR-000-000015) and the Technical Standard Specification for Historic Environment Investigations (HS2-HS2-EV-STD-000-000035).

4.1.2 For specific elements of works the following HS2 technical standards will apply

Activity	Technical standard or guidance	Reference
Archival research	Technical Standard for Detailed Desk Based Assessments	HS2-HS2-EV-STD-000-000035
Historic Landscape and Setting Recording	Technical Standard for the Recording of the Setting of Designated Heritage Assets	HS2-HS2-EV-STD-000-000037
Historic Building Recording	Understanding Buildings: A Guide to Good Recording Practice	Historic England 2016

4.2 Plant and Equipment

4.2.1 An account of the plant and equipment required is provided within each of the site specific RAMS. In summary the following equipment will be used for each of the HLS and HBR works

- Canon DSLR with a Canon Zoom lens EF 28-80mm
- UAV Drone, DJI Phantom Pro 3, with 12 megapixel camera

4.3 Historic Landscape Study and Setting Recording

4.3.1 Works of Historic landscape study and setting recording are non-intrusive and comprise both field-based works as well as desk-based researches.

Field based works

4.3.2 The field-based works comprise a site walkover complemented by UAV (drone) based photography and photogrammetry.

4.3.3 The site walkover will be undertaken across all areas where access has been permitted including areas that are publicly accessible such as the public highway and PROWs. The site walkover will be undertaken in accordance with the specific requirements of the project plan. The site walkover is to observe, locate, identify map and record features of landscape character and appearance both natural and man-made. The record will include all topographical features and earthworks, trackways, boundaries, hedges, watercourses, tree

planting buildings and structures. Features are to be photographed to show both detail and landscape context. All photographs are to be digitally captured in RAW format. The locations of photographs and or photographic viewpoints are to be geo-referenced and a photo register maintained.

- 4.3.4 The project plans specify indicative flight paths for drone-based video photography as well as locations for static viewpoints and any requirement for photogrammetry. Images will be captured at appropriate altitudes at 10m, 20m and 30. A number of static and overlapping photographs will be captured to produce a 360-degree viewpoint. Photographs will be both oblique and vertical. Video footage will be 4K in MP4 and MOV file format.
- 4.3.5 Where photogrammetric survey is required the area is to be covered by north-west to south-east transects at equal spacing at an altitude of 80-100m. Captured images will have a 75% front overlap and a 65% side overlap to allow for thorough coverage. Ground survey points will be designed on-site, based on on-site conditions. Post fieldwork processing will result in TIN compatible 3D digital terrain model with a GSD of a minimum of 50cm and an accuracy of +/- 20mm geolocation; a 3D coloured Digital Surface Model, including all visible aspects of the site in OBJ format, an orthomosaic map of the site, with a GSD of a minimum of 5.0cm in TIFF format and a 2D Digital Elevation Map of the site in TIFF format.

Desk based researches

- 4.3.6 The requirement for desk based research is specified within the project plan. Researches are to comprise all relevant and readily available resources including maps and archives held by the British Library and National Archives as well as local libraries. Good quality digital or photographic copies are to be reproduced and a register maintained of the source, the document reference and the date produced.

4.4 Fieldwork Deliverables

- 4.4.1 All written reports will be in accordance with HS2 Technical Standard 'Specification for historic environment investigations' (HS2-HS2-EV-STD-000-000035), and GWSI: HERDS (HS2-HS2- EV-STR-000-000015).
- 4.4.2 A schedule of deliverables for each scheme of work is set out in the tables below.

Table 4 Historic Landscape Study – schedule of deliverables

Document reference	Delivery
Fieldwork Sign off sheet	Within 24 hrs of completion of site-based work
Draft fieldwork report	To be submitted to contractor within 7 weeks of completion of fieldwork
Final Fieldwork report	Final report to be approved by employer within 14 weeks of completion of fieldwork.
Digital deliverables	To be submitted to contractor 14 weeks from completion of fieldwork

Table 5: Historic Building Recording – schedule of deliverables

Document reference	Delivery
Fieldwork sign off sheet (non-intrusive survey)	Within 24 hrs of completion of non-intrusive site-based work
Interim report (recommendations for further works)	7 days from completion of non-intrusive works
Fieldwork sign off sheet (intrusive survey)	Within 24 hrs of completion of intrusive site-based work
Draft fieldwork report	To be submitted to contractor within 7 weeks of completion of fieldwork (non-intrusive or intrusive)
Final Fieldwork report	Final report to be approved by employer within 14 weeks of completion of fieldwork.
Digital deliverables	To be submitted to contractor 14 weeks from completion of fieldwork

- 4.4.3 For works of historic building recording an interim report is required within 7 days of completion of the non-intrusive phase of the works. The report is required to define the need and scope for any additional survey work required during the demolition phases of the work. An interim report is not required for works of historic landscape study

4.5 Digital Deliverables

- 4.5.1 Wardell-Armstrong will provide the Contractor with the required data, metadata and digital material as specified in the Historic Environment Digital Data Management and Archiving Procedure (C262-ARP-EV-SPE000-000003). Data management will be undertaken in accordance with HS2 Cultural Heritage GIS requirements and all data will be provided in accordance with the Geographical Information System Standards (HS2-HS2-GI-STD-000-000002).
- 4.5.2 All reports, including illustrations, will be provided to the Contractor in accordance with HS2 Document Management Procedure (HS2-HS2-IM-PRO-000-000008). GIS deliverables will be provided in accordance with HS2 Cultural Heritage GIS Specification (HS2-HS2-GI-SPE-000-000004). CAD files will be GIS compatible and follow standards set out in the same Specification. Figures may be produced using CAD, but final deliverables will be supplied in GIS format.
- 4.5.3 Mapping and spatial data deliverables will conform to HS2 GIS Standards as set out in HS2-HS2-GI-STD-000-000002 and other associated referenced documents.

4.6 The Sub-Contractor's Information Management Plan

GIS/BIM Requirements

- 4.6.1 The Historic environment investigations outlined in this LS-WSI will adhere to a standard approach to GIS deliverables set out in the Employer's Cultural Heritage GIS Standard (HS2-HS2-GI-STD-000-000010). The Employer's standard templates for reports and maps will be used. Mapping and spatial data deliverables will conform to a standard approach to ensure consistency across each project.
- 4.6.2 All data will have data limitations specified in the associated metadata, set out in the INSPIRE metadata convention.

Mapping Requirements

- 4.6.3 All maps will be produced using the formal ES A3 landscape map template (HS2-HS2-GI-GDD-000-000134).
- 4.6.4 All maps will have the HS2 logo on the map.
- 4.6.5 Maps will generally be at 1:10,000 scale. Larger scales will be utilised if the area presented on any map is small and the scale improves clarity.
- 4.6.6 Where practicable, maps will utilise the symbology for features used in the formal ES. Symbology for new features will be agreed with HS2 Ltd in advance of the final submission of maps.
- 4.6.7 Maps will include;
- HS2 Construction boundary and route alignment (Standard formal ES symbology/terminology);
 - Local Authority district boundaries (Standard formal ES symbology/terminology);
 - Community forum boundaries (Standard formal ES symbology/terminology);
 - 1:10,000 base mapping will be standard OS Vectormap;
 - 1:5,000 mapping will be standard OS Mastermap topo lines only (no colour fill); and
 - Maps will be uploaded into eB when approved.

Spatial Data

- 4.6.8 All data not previously issued by HS2 Ltd will be submitted in accordance with HS2 Ltd standards HS2-HS2-GI-STD-000-000002. Data will include feature classes used for data driven pages.
- 4.6.9 The template schema will be provided to Wardell-Armstrong by Fusion prior to the start of the post-excavation phase of works.

Document Control and Assurance Process

- 4.6.10 Wardell-Armstrong is ISO 9001 accredited and uses its management principles to control documents and assure quality throughout the organisation.
- 4.6.11 Wardell-Armstrong is also a registered organisation with the Chartered Institute for Archaeologists (CIfA) and adheres to its code of conduct (2014a). Wardell-Armstrong will adhere to all relevant CIfA guidelines.

4.7 Resourcing

- 4.7.1 All field-based works and deliverables will be the responsibility of the archaeology and built heritage team based at the Carlisle offices of Wardell Armstrong. An organogram outlining the individuals involved is included in Section 10, with Curriculum Vitae provided in Appendix 9.
- 4.7.2 Legal, administrative and commercial support, will be provided by the wider Wardell Armstrong team, based at Stoke-on-Trent. Health and safety support will be directly provided by Ed Johnson, based at the Carlisle Offices, who has NEBOSH qualification. The leadership team based within the Carlisle office comprises Chloe Brownlee-Chapman, Regional Director at Wardell Armstrong, who will project manage the works described in this document. She will be assisted by Frank Giecco, Technical Director, who will on occasion substitute for Chloe Brownlee-Chapman. Frank will have project supervision responsibility, including quality assurance. Logistical and administrative support will be provided by Karen Winter, Senior Administrator, who has received ASite training from Fusion.
- 4.7.3 For works of historic landscape study sites, the on-site team will likely consist of a minimum of two teams of two; one team comprising the drone operator with one observer, the other team, the ground survey team, comprising also two people. Each team will comprise at least one first aider.
- 4.7.4 The team undertaking the field-based works will comprise either Cat Peters, Principal Archaeologist, or Ariane Buschmann. Cat and Ariane may be assisted by Helen Phillips, Kevin Mounsey or Sang Tran.
- 4.7.5 The UAV drone aerial survey works will be undertaken by John Nemes as Pilot, and Richard Walters as Observer, each of Commendium Ltd.
- 4.7.6 For works of historic building recording, the on-site team will comprise a minimum of two people, the surveyor recording the building digitally via laser scan, and a buildings archaeologist, recording the building by written record, observation, measured sketching and photography. At least one of these members of staff will be first aid trained.
- 4.7.7 The team responsible for producing final written reports will be those involved in the site works, with additional, illustrative input from the illustration team at the Carlisle office, Helen Phillips and Valeria Tiezzi, with overall responsibility for illustrative outputs and digital deliverables being held by Jodie Grocott, GIS and Data Manager.

5 Interface and Communication Plan

5.1 Work site interface

- 5.1.1 In order to deliver the works the Sub-Contractor will need to work closely with the Contractor. All parties will follow the Employer's protocols for intra- and inter-project communication.
- 5.1.2 The sub-contractor shall liaise with the Contractor to ensure the compatibility of the investigations with the following:
- Detailed scheme design; issues related to MWCC or others
 - Programme sequence for possession, handover and demolition to other parties;
 - Health and Safety arrangements and site sharing;
 - Temporary works and logistical arrangements carried out by the sub-contractor or others.
 - Arrangements for site share
 - The Sub-contractor's approach to communications with other contractors, local community, landowners and the general public.
- 5.1.3 The sub-contractor will work within the requirements of the Contractor and the Principal Contractor. The Principal Contractor will retain control of the work area during the works of historic environment investigation.

5.2 Sub-contractor and contractor interface

- 5.2.1 The sub-contractor shall provide to the Contractor as necessary change register updates, risk register updates, non-conformances including all incident and near miss reporting, and quarterly and six-monthly data.
- 5.2.2 Wardell-Armstrong will ensure that updates are provided to Fusion, to include the issuing of the pre-works report, at least one week prior to commencement of site works and a post-fieldwork summary, confirming the successful completion of site works. When requested weekly updates will be issued, and take the form of weekly reports incorporating programme, H&S, quality and project control details. As requested the sub-contractor shall provide monthly progress reporting to the Contractor comprising programme, H&S, environmental, community engagement, commercial and quality issues.

6 Health and Safety Plan

6.1 Health and Safety Values

- 6.1.1 Wardell Armstrong LLP is committed to the promotion of appropriate health and safety procedures and practices, maintaining that this is essential to achievement of the professional standards, continuous improvement and business performance to which the company aspires. A signed copy of the Health and Safety Policy Statement is included as Appendix 7.
- 6.1.2 The Wardell Armstrong LLP Health and Safety Policy was updated and approved by the Chairman on 28th August 2019. It is regularly reviewed and updated via the intranet, but the August 2019 version is provided within this document as Appendix 8. It outlines the overall responsibilities of ensuring that adequate Health and Safety procedures are in-place to meet at least the minimum legal requirements and that Health and Safety forms a key component of all work undertaken by Wardell Armstrong employees.
- 6.1.3 The HS2 Health and Safety Strategy (Document: HS2-HS2-HS-STR-000-000002) describes HS2's approach, vision, mission, and values with respect to health and safety, and has been wholly adopted by Wardell-Armstrong.
- 6.1.4 All works of historic environment investigation will be undertaken in accordance with Fusion's Health and Safety Policy (Document No. HS2-HS2-HS-POL-000-000001). Wardell Armstrong will comply with the health and safety standards set out by HS2 and Fusion (1EW0-FUS-PR-PLN-C000-002045).

6.2 Accident and Incident Reporting

- 6.2.1 Accident and incident reporting will follow the guidance and procedures set out in HS2 Ltd Works Information and Fusions Standard for Accident and Incident Investigation and Reporting (Document No. SH2 STD1) and Incident & Emergency Preparedness Plan (Document No. 1EW03-FUS-HS-PLN-C000-000001). The sub-contractor's RAMS will include a clear procedure for responding to an incident and list of emergency contacts including Fusion's Duty Manager and SHEQ Manager.

6.3 RAMS

- 6.3.1 RAMS are required for each specific site and are a separately prepared document for submission to Fusion for approval prior to works commencement. No survey work will be undertaken without prior approval of Wardell-Armstrong produced RAMS by the Contractor. RAMS are provided at Appendix 10.

6.4 Site Specific Constraints

- 6.4.1 All constraints to work on a site specific basis will be detailed within the site specific RAMS.

- 6.4.2 Works of Historic landscape survey are non-intrusive and there is no requirement to undertake survey of buried services. Commendium will set out within their RAMS all site specific constraints and requirements in relation to conducting UAV flights in proximity to overhead services. In general a method of avoidance for overhead powerlines has been devised which includes avoidance measures and restriction zones
- 6.4.3 Ecological constraints on survey will be identified within the RAMS and ecological updates will be provided to the sub-contractor at least one week before survey works commence to ensure that any constraints are adhered to whilst on-site.
- 6.4.4 The ground-based survey works of historic landscape study is anticipated to have no environmental impact. The most likely source of environmental impact is anticipated to be noise produced by the UAV drone aerial surveys. Noise generated through use of the drone is considered minimal and does not require prior notice to be issued to local residents. Any affect upon local residents will be negated by ensuring flight times are kept within sociable work hours between 8:30AM and 4:30PM.
- 6.4.5 Works occurring on sites where other contractors will also be working will have specific risks and the sub-contractor will comply with all communication and interface procedures that will be in place. Notice will be given to the relevant Fusion Project Engineer responsible for the associated sector in which the works will occur at least one week in advance of works occurring. This will allow communications regarding other contractors and adjacent works to be issued.

7 Site Monitoring and Engagement Plan

7.1 Stakeholder Engagement

- 7.1.1 Prior to commencing the works, the Sub-Contractor shall agree a programme of periodic progress reports with the Contractor's Historic Environment Manager and shall be represented at such meetings to the satisfaction of the Contractor. The Sub-Contractor shall provide information describing progress on-site to date and feedback from any initial assessment as required.
- 7.1.2 Where required, the Contractor's Historic Environment Manager shall arrange site visits with specialist stakeholders and expert bodies to provide advice on-site where this is considered beneficial and agreed with the Employer. This will be undertaken within the Employer's communication protocols set out in the Employer's Community Relations Strategy.
- 7.1.3 Periodic updates on the progress of the Area Central Enabling Works archaeology programme shall be submitted to the Employer and Local Authority heritage advisors t by the Contractor's Historic Environment Manager. The Sub-Contractor shall provide information to the Contractor's Historic Environment Manager as requested to inform this reporting.

- 7.1.4 The Contractor's Historic Environment Manager shall arrange and convene monitoring site visits with the Employer to assess the quality and progress of the works and their adherence to HS2 technical standards and procedures.
- 7.1.5 The Employer may invite the Local Authority heritage advisors to attend these meetings, as appropriate. The Employer will be responsible for informing Historic England and the local authority historic environment specialists on the progress of fieldwork activities and findings.
- 7.1.6 In addition to monitoring visits, the Employer may plan and host media events or documentary recording, particularly in the event of a significant archaeological discovery. If requested to do so, the Sub-Contractor shall provide the HS2 media team with escorted access to the Site. Any request for media access will be confirmed in advance, in writing, by the Contractor's Historic Environment Manager.
- 7.1.7 There shall be no unauthorised access to the works in any other circumstances. Any visits to the works shall be in accordance with the Contractor's health and safety, site access and security requirements.

7.2 Community Engagement

- 7.2.1 A plan for community engagement in connection with the research and recording of 20th century conflict sites shall be developed by the sub-contractor and provided to the Contractor for information and approval. A copy of the community engagement plan shall form an appendix to this LS-WSI.

8 Quality and Technical Assurance Plan

8.1 The Quality Assurance Process

- 8.1.1 All works of historic landscape study and historic building recording will be delivered in accordance with Fusion's AWH Quality Plan (ref. 1EW03-FUS-QY-PLN-C000-001658) and the standards and guidance set out in the following documents:
- High Speed Rail (London-West Midlands) Environmental Minimum Requirements
 - High Speed Rail (London-West Midlands) Environmental Minimum Requirements Annex 3: Heritage Memorandum (Document No. CS755 02/17)
 - High Speed Rail (London-West Midlands) Environmental Minimum Requirements Annex 1: Code of Construction Practice (Document No. CS755 02/17)
 - HS2 Generic Written Scheme of Investigation: Historic Environment Research and Delivery Strategy (Document No. HS2-HS2-EV-STR-000-000015)
 - Technical Standard for the Recording of the Setting of Designated Heritage Assets

(HS2-HS2-EV-STD-000-000037)

- HS2 Technical Standard - Specification for Historic Environment Investigations. (Document No. HS2-HS2-EV-STD-000-000035)
- HS2 Technical Standard: Historic Environment Physical Archive Procedure (Document No. HS2-HS2-EV-STD-000-000039)
- HS2 Technical Standard: Historic Environment Digital Data Management and Archiving Procedure (Document No. HS2-HS2-EV-STD-000-000040)
- HS2 Cultural Heritage GIS Specification (Document No. HS2-HS2-GI-SPE-000-000004)
- Chartered Institute for Archaeologists (CIfA), 2014ba, Code of Conduct
- Historic England relevant standard and best practice guidance

8.1.2 Wardell-Armstrong is accredited with the Chartered Institute for Archaeologists (CIfA) as a Registered Archaeological Organisation (RAO). Our supervisory staff have appropriate and relevant levels of demonstrable experience for the undertaking the setting recording and are either associate members of the CIfA, or of an equivalent demonstrable professional standing.

8.1.3 All members of the Sub-Contractor's site team are suitably qualified, experienced and competent professionals. All site operatives hold a current and valid CSCS qualification to at least 'Operative' level.

8.1.4 All field work reporting will be prepared and conducted by suitably qualified, experienced and competent professionals. All reports will be checked in-house by Wardell Armstrong's Quality Assurance team, prior to issue, anticipated to include Frank Giecco, Technical Director, for content and technical proficiency, and Chloe Brownlee-Chapman, Regional Director, for final editing and approval. The checked reports will be issued in draft to the Contractor, whose Historic Environment Manager will check and review each report prior to issue to the Employer for acceptance. Final reports, following comments, will be checked and reviewed again prior to issue.

8.2 The Quality and Technical Assurance Plan

8.2.1 Wardell Armstrong LLP have a Quality Policy which encapsulates what all work undertaken by all Wardell Armstrong staff are committed to achieve and to which helps guarantee the quality of all work undertaken by the company. This policy is included as Appendix 5.

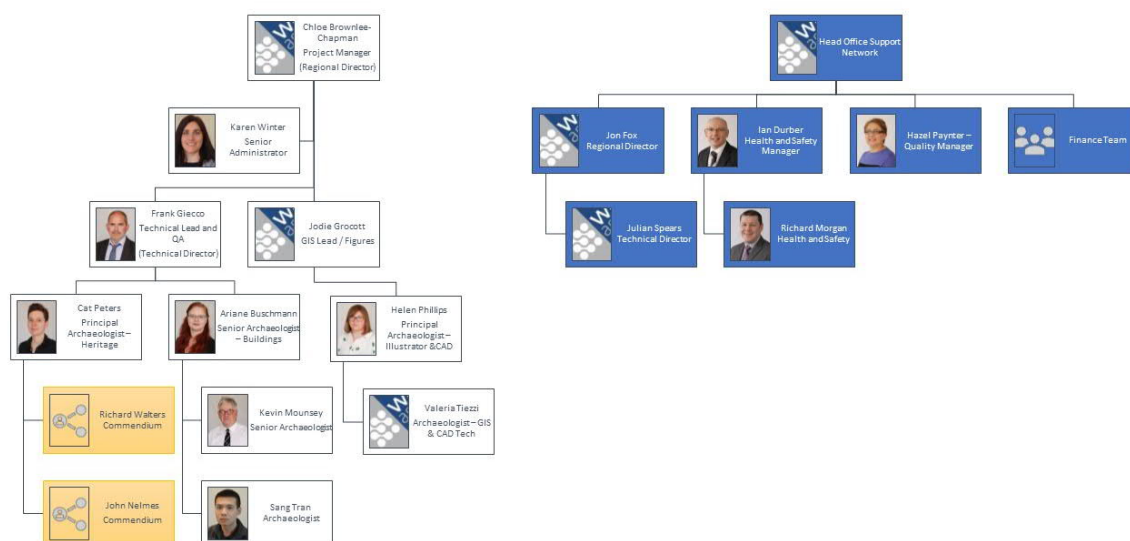
9 Information Management Plan

- 9.1.1 The method for preparation of the digital dataset, digital drawings, and digital report deliverables in line with the Employer's Technical Standards. Digital specifications and outputs for the delivery of digital data are detailed within the project specific discussions within this report, included within Section 4 and have been designed to adhere to the Employer's Technical Standards.
- 9.1.2 Wardell Armstrong LLP have a comprehensive ICT Policy, which underpins all information management, data sharing, software use and social media elements of the work we undertake and the projects we are involved with. The full policy is included in Appendix 6 and adheres to the Employer's Technical Standards and the requirements of this set of work.

Code 1 - Accepted

10 Resource Plan

10.1.1 The organogram shows the roles and responsibilities of principal staff assigned to the project. Curriculum Vitae for the key staff undertaking the works are included within Appendix 9.



11 References and Glossary of Terms

11.1 Terms and abbreviations

11.1.1 The following terms have been used in this document

Contractor – Fusion; the organisation undertaking the Enabling Works for Area Central on behalf of the Employer.

Detailed Desk Based Assessment (DDBA) – analytical document that builds on the information gathered previously in the Environmental Statement to address issues, questions or uncertainties within a given area.

Employer – HS2 Ltd, the organisation responsible for delivery of HS2 Phase One

HERDS - Generic Written Scheme of Investigation: Historic Environment Research and Delivery Strategy – the framework for delivering all historic environment investigations undertaken as part of the HS2 Phase 1 programme.

Location – a specific HS2 worksite or group of worksites that are being addressed as a combined historic environment investigation

Location Specific Written Scheme of Investigation (LS-WSI) – specification document assembling one or more Project Plans within an area of land defined primarily for construction programme purposes.

Project Plans – specification document for each specific package of works

Sub-contractor – the organisation undertaking the works on behalf of the Contractor

Works – the specific historic environment assessment, evaluation or investigation works at each location.

11.1.2 The following abbreviations are used in this method statement:

CIfA – Chartered Institute for Archaeologists

CSCS – Construction Certification Scheme

DDBA – Detailed Desk Based Assessment

ES – Environmental Statement

HERDS – Generic Written Scheme of Investigation: Historic Environment Research and Delivery Strategy

HBR – Historic Building Recording

HLS – Historic Landscape Study

LS-WSI – Location Specific Written Scheme of Investigation

RAMS – Risk Assessment Method Statement

11.2 References

HS2 documents

HS2 Generic Written Scheme of Investigation: Historic Environment Research and Delivery Strategy (Document No. HS2-HS2-EV-STR-000-000015)

HS2 Technical Standard Specification for Historic Environment Investigations (HS2-HS2-EV-STD-000-000035)

HS2 Technical Standards for Specification for Historic Environment Project Plans and Location Specific Written Schemes of Investigation (Document no. HS2-HS2-EV-STD-000-000036)

HS2 Technical Standard for Recording of Setting (HS2-HS2-EV-STD-000-000037)

HS2 Standard Template for Reports (HS2-HS2-PM-TEM-000-000004)

HS2 Cultural Heritage GIS Specification (HS2-HS2-GI-SPE-000-000004)

HS2 GIS Standards (HS2-HS2-GI-STD-000-000002)

HS2 Cultural Heritage GIS Standard (HS2-HS2-GI-STD-000-000010)

HS2 ES A3 landscape map template (HS2-HS2-GI-GDD-000-000134)

High Speed Rail (London-West Midlands) Environmental Minimum Requirements (CS755 02/17)

HS2 Technical Standard: Historic Environment Physical Archive Procedure (HS2-HS2-EV-STD-000-000039)

HS2 Technical Standard: Historic Environment Digital Data Management and Archiving Procedure (HS2-HS2-EV-STD-000-000040)

Fusion HS2 Health and Safety Standards set out by HS2 and Fusion (1EW0-FUS-PR-PLN-C000-002045)

Technical standards and guidance

Chartered Institute for Archaeologists (CIfA), 2014a, Code of Conduct

Chartered Institute for Archaeologists (CIfA), 2014b, Standard and guidance for the creation, compilation, transfer and deposition of archaeological archives

Historic England 2016, Understanding Buildings: A Guide to Good Recording Practice, Historic England: Swindon

Project Plans

Project Plan for Historic Building Recording, Durham Farm, Buckinghamshire (1EW03-FUS-EV-REP-CS03_CL05-009406)

Project Plan for Historic Landscape Study and Setting Recording, Wendoverdean, Buckinghamshire (1EW03-FUS-EV-REP-CS03_CL05-009407)

Project Plan for Historic Building Recording, Road Barn Farm, Buckinghamshire (1EW03-FUS-EV-REP-CS03_CL05-009408)

Project Plan for Historic Building Recording, The Lodge, Doddersall, Buckinghamshire (1EW03-FUS-EV-REP-CS05-007810)

Project Plan for Historic Landscape Study and Setting Recording, Chetwode, Buckinghamshire (1EW03-FUS-EV-REP-CS06_CL10-007816)

Project Plan for Historic Landscape Study and Setting Recording, Radstone, Northamptonshire (1EW03-FUS-EV-REP-CS07_CL12-037104)

Project Plan for Historic Landscape Study and Setting Recording, Greatworth Hall, Northamptonshire (1EW03-FUS-EV-REP-CS07_CL12-037105)

Project Plan for Historic Building Recording, Station 53c Portway Farm, Buckinghamshire (1EW03-FUS-EV-REP-CS06_CL09-007810)

Project Plan for Historic Building Recording, RAF Greatworth Park, Northamptonshire (1EW03-FUS-EV-REP-CS07_CL25-002565)

Project Plan for Historic Building Recording, The Bungalow, Calves Close Spinney, Northamptonshire (1EW03-FUS-EV-REP-CS07_CL13-004381)

Specific previous works relevant to this LS-WSI

Recording of Setting at Doddershall House (1EW03-FUS-EV-REP-CS05-003268)

Buckinghamshire Archaeology Society, 2013, The Lodge, Doddershall: Historic Building Report

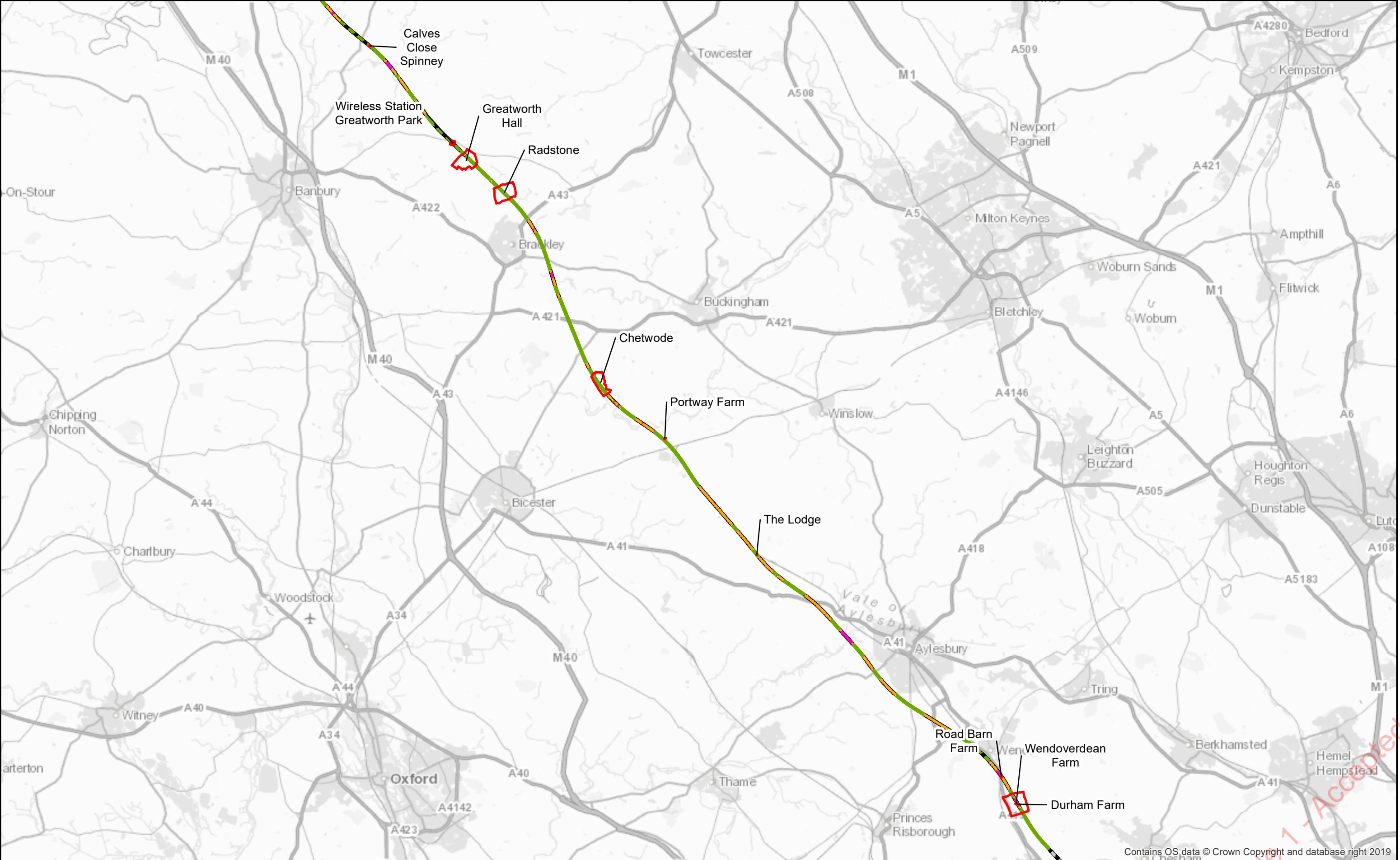
Assessment of Built Heritage Assets, The Green, Chetwode, Buckinghamshire (DDBA) 1EW03-FUS-REP-CS06_CL10-007817

Gregory, D, 2015, Built to Resist: an assessment of the Special Operations Executive's Infrastructure in the United Kingdom during the Second World War, 1940-46, PhD thesis, unpublished, University of East Anglia

English Heritage 2011, RAF Stanbridge, Leighton Buzzard, Bedfordshire: Desk Based Assessment, English Heritage: Swindon

Figure

Figure 1: Location of the package works sites



HS2 Ltd accept no responsibility for any circumstances, which arise from the reproduction of this map after alteration, amendment or abbreviation or if it issued in part or issued incomplete in any way.

© Crown copyright and database rights 2020
OS 100049190

Derived from (...cite the scale of the BGS data used...) scale BGS Digital Data under licence 2011/111 BP British Geological Survey. © NERC.

Contains Environment Agency information © Environment Agency and database right.

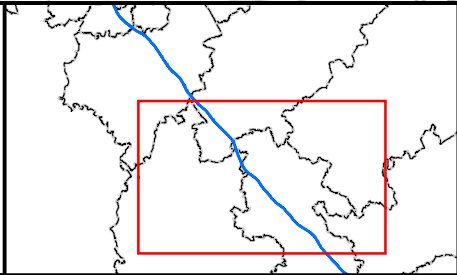
© Crown copyright material is reproduced with the permission of Land Registry under delegated authority from the Controller of HMSO.

This material was last updated on [date] and may not be copied, distributed, sold or published without the formal permission of Land Registry and Ordnance Survey. Only an official copy of a title plan or register obtained from the Land Registry may be used for legal or other official purposes. © Crown Copyright Ordnance Survey.

Legend


- Study Area
- Bored Tunnel
- Cutting
- Embankment
- Green Tunnel
- Tunnel Portal
- Viaduct

Phase One Final Preliminary Design alignment January 2017





High Speed Two
Figure 1: Location of the ten sites of work

Published



Registered in England. Registration number 06791686.
Registered office: 2 Snowhill, Queensway, Birmingham B4 6GA.

Scale at A3: 1:200,000



Doc Number: 1EW03-FUS-GI-MAP-C000-000031

Date: 10/01/20

Appendix 1 Project Plans

The table below provides a summary of the project plans associated with the works covered by this LS-WSI.

Site	Project plan ref	Revision
Durham Farm	1EW03-FUS-EV-REP-CS03_CL05-009406	C02 approved
Wendoverdean	1EW03-FUS-EV-REP-CS03_CL05-009407	C02 approved
Road Barn Farm	1EW03-FUS-EV-REP-CS03_CL05-009408	C02 approved
The Lodge	1EW03-FUS-EV-REP-CS05-007810	C02 approved
Chetwode	1EW03-FUS-EV-REP-CS06_CL10-007816	C02 approved
Radstone	1EW03-FUS-EV-REP-CS07_CL12-037104	C02 approved
Greatworth Hall	1EW03-FUS-EV-REP-CS07_CL12-037105	C02 approved
Station 53c, Portway	1EW03-FUS-EV-REP-CS06_CL09-007810	C02 approved
RAF Greatworth Park	1EW03-FUS-EV-REP-CS07_CL25-002565	C02 approved
The Bungalow, Calves Close Spinney	1EW03-FUS-EV-REP-CS07_CL13-004381	C02 approved

The subcontractor shall maintain a copy of the project plans in the project file

Appendix 2 Change Control

Change Control Register

The subcontractor shall maintain a change control register and maintain a file of change control forms in the project file

Change control proforma

Historic Environment Fieldwork Change Control Acceptance Sheet	
Site Code:	
Site Name:	
Historic Environment Investigation Type:	
Contractor:	
Project Plan Doc. No.:	
LSWSI Doc. No.:	
Summary of Results	
Fieldwork Director:	Date:
Description of Proposed Change:	

Code 1 - Accepted

Drawing / Sketch:

Change type: (Delete as applicable)	Implementation of Contingency	Variation of Methodology	Rapid Investigation	Extension of Investigation Area
--	----------------------------------	-----------------------------	------------------------	------------------------------------

Proposed HERDS Objectives:

Compiled by: (Archaeological Contractor)	Name	Date	Signature
Checked by: (Contractor HERDS Manager)	Name	Date	Signature
Approved by: (HS2 Historic Environment Manager)	Name	Date	Signature
Approved by: (HS2 Project Manager)	Name	Date	Signature

Appendix 3 Field work sign off sheet

Register of field work sign off sheets

The subcontractor shall maintain a field work sign off register and maintain a file of field work sign off sheets in the project file

Field work sign off sheet Proforma

Historic Environment Fieldwork Sign-off Sheet											
Work Package Reference											
Historic Environment Investigation Type											
Contractor											
Fieldwork Conducted by (Site Director)		Dates									
Summary of Results											
<div>Document References</div> <table border="1"> <tbody> <tr><td>1.</td><td></td></tr> <tr><td>2.</td><td></td></tr> <tr><td>3.</td><td></td></tr> <tr><td>4.</td><td></td></tr> </tbody> </table>				1.		2.		3.		4.	
1.											
2.											
3.											
4.											
Compiled by (Archaeological Contractor)	Name	Date	Signature								
Checked by (Contractor HERDS Manager)	Name	Date	Signature								
Approved by (HS2 Historic Environment Manager)	Name	Date	Signature								

Appendix 4 U&A compliance register

The sub-contractor is to provide a register of U&A compliance and maintain a file of U&A compliance in the project file

Code 1 - Accepted

Appendix 5 Wardell Armstrong Quality Policy

A copy of Wardell-Armstrong LLP Quality Policy is held within the project file

Appendix 6 Wardell Armstrong ICT Policy

A copy of Wardell-Armstrong LLP ICT is held within the project file

Code 1 - Accepted

Appendix 7 Wardell Armstrong Health and Safety Policy Statement

A copy of Wardell-Armstrong LLP Health and Safety Policy Statement is held within the project file

Appendix 8 Wardell Armstrong Health and Safety Policy

A copy of Wardell-Armstrong LLP Health and Safety Policy is held within the project file

Code 1 - Accepted

Appendix 9 Wardell Armstrong Project Delivery Team CVs

A copy of the CVs of members of the project team is held within the project file

Appendix 10 RAMS

A copy of each of the approved RAMS is held within the project file