

1EW03 - Enabling Works Central AWHj

Interim Report

Historic Building Recording Accommodation Block RAF Greatworth Park

Document Number: 1EW03-FUS_WAR-EV-REP-CS07_CL25-000001

Revision	Author	Checked by	Approved by	Date approved	Reason for revision
Co1	Ariane Buschmann	Frank Giecco			

Contents

1	Executive Summary	1
2	Introduction	1
	2.1 Location	1
	2.2 Rationale for the works	1
	2.3 Methodology	1
3	Results	3
	3.1 Historic Context and Map Regression	3
	3.2 Description of the Buildings	4
	3.3 Analysis	7
4	Recommendations for further works	9
5	References	10
	FIGURES	11
	APPENDIX 1: PLATES	12

List of Figures:

Figure 1: Location Plan

Figure 2: Ordnance Survey map, 1979, 1:2500 scale

Figure 3: Annotated ground floor plan

List of Plates

Plate 1: Location of earliest RAF Greatworth complex (1945 Google Earth imagery)

Plate 2: Nissen huts providing accommodation for RAF Greatworth, facing north (RAF Greatworth 2019)

Plate 3: Building providing mess, classroom etc for RAF Greatworth, facing south-east (RAF Greatworth 2019)

Plate 4: Earliest RAF Greatworth accommodation complex, facing north-east (RAF Greatworth 2019)

Plate 5: Location of earliest RAF Greatworth transmitter building (RAF Greatworth 2019)

Plate 6: Floorplan of transmitter hall (RAF Greatworth 2019)

Plate 7: Replacement transmitter building from south-east, facing north-west (RAF Greatworth 2019)

Plate 8: Transmitter building with adjacent buildings, facing west (RAF Greatworth 2019)

Plate 9: The 'long walk', 'aerial farm' and transmitter building complex taken from the south of the accommodation complex (RAF Greatworth 2019)

Plate 10: Sleeping space at RAF Greatworth, nd (RAF Greatworth 2019)

Plate 11 Sleeping space at RAF Greatworth, 1967 (RAF Greatworth 2019)

Plate 12: Accommodation complex from the east, facing west, late 1950s (RAF Greatworth 2019)

Plate 13: South-west facing elevation of accommodation complex, facing east, 1957 (RAF Greatworth 2019)

Plate 14: South-western elevation of accommodation complex in 1999 (RAF Greatworth 2019)

Plate 15: Accommodation block south elevation

Plate 16: Accommodation block south elevation west corner

Plate 17: Accommodation block west elevation with fire escape

Plate 18: Accommodation block north elevation with crack in fabric

Plate 19: Accommodation block west elevation with shed to the front

Plate 20: Accommodation block west elevation with noticeable break in fabric to north extension

Plate 21: Accommodation block courtyard

Plate 22: Accommodation block north elevation with modern workshop

Plate 23: Modern workshop extension

Plate 24: East section north elevation and courtyard boundary wall

Plate 25: East section east elevation

Plate 26: East section east elevation blocked doorway

Plate 27: East section south elevation

Plate 28: East section south-western structure west elevation with blocked off window

Plate 29: Accommodation block west elevation

Plate 30: Modern vestibule

Plate 31: GF1 entrance room with kitchen and staircases

Plate 32: GF3 looking south

Plate 33: GF3 doorway to GF4

Plate 34: GF3 gravel area

Plate 35: GF3 doorway to GF6 and extension GF11

Plate 36: GF3 north section with gallery

Plate 37: GF5 general view west

Plate 38: GF5 blocked doorway

Plate 39: GF5 western section, gate and emergency exit

Plate 40: GF 6 blocked doorway with fanlight to GF9

Plate 41: GF6 view towards east to GF15

Plate 42: GF8 blocked off window

Plate 43: GF8 looking north towards modern kitchen

Plate 44: GF9 Vestibule

Plate 45: GF9 Blocked doorway to GF6

Plate 46: GF11 view towards toilets and GF13

Plate 47: GF11 view towards internal windows at GF13

Plate 48: GF12 general view

Plate 49: FF1 hallway with curved walls

Plate 50: FF3 open plan office

Plate 51: Fire escape at west elevation of FF3

Plate 52: FF8 hallway general view north

Plate 53: Modern pre-fab partition wall

Plate 54: GF13 with doorway towards GF6

Plate 55: GF14 view towards GF15

Plate 56: GF15 blocked wall towards GF6

Plate 57: GF16 view towards GF17 and GF18

Plate 58: GF16 general view west

Plate 59: GF16 blocked off doorway

Plate 60: GF19 blocked fireplace

Plate 61: GF22 with blocked double door to test room

Plate 62: GF22 view south

Plate 63: GF21 doorway to courtyard

Plate 64: Enclosed Courtyard

Plate 65: Enclosed courtyard, view to shed and modern workshop

Plate 66: Site of former tennis court

Plate 67: General view across compound

1 Executive Summary

- 1.1.1 This interim report provides a summary of the results of the Historic Building Recording (HBR) survey undertaken of the two Cold War structures at RAF Greatworth Park (the Site). The HBR was undertaken in accordance with the Project Plan (1EW03-FUS-EV-REP-CS07_CL25-002565) and the Location Specific Written Scheme of Investigation (1EW03-FUSEV-REP-C000-009804). The works of HBR were required to produce an analytical record of the World War II buildings comprising the former accommodation block prior to demolition as part of construction activities relating to Phase 1 of HS2. The HBR, equivalent to Historic England's level 2 survey, was undertaken on the 8th June 2021.
- 1.1.2 The structures at RAF Greatworth Park comprised two interconnected L-shaped buildings with two courtyards. The buildings were last used as offices and are still partially in use as soil sample testing site. The two blocks were originally built as accommodation block for RAF Greatworth, the remnants of main compound of which are situated to the south-west of the site. The environs of the buildings have been compromised by the development of the current adjacent compound.
- 1.1.3 The survey works have confirmed that despite modern alterations, the two structures retain some of their original fabric and plan form layout, especially on the ground floor and one storey structure, as well as internal features which can further an understanding of the use of the structures. The layout of the first floor has clearly be compromised by the modern alterations. None of the windows within the building appear to be original, but it is likely that some of the doors and door surrounds with fanlights are original.
- 1.1.4 The structures retain significance, based on their rarity value and their potential for communal value, dependent on forthcoming community engagement activities. There is also the potential that additional features of evidential, historical or architectural significance which could aid an understanding of the use and layout of the structures, could be revealed following the full clearance of the buildings and during the demolition phase.
- 1.1.5 A further survey once the buildings are cleared and an enhanced programme of demolition integrated recording, to allow for a full recording and understanding of the structures, is recommended to better reveal significance. These works would contribute to HERDS objective KC45: 20th century conflict sites.

2 Introduction

2.1 Location

- 2.1.1 A location plan is provided at Figure 1. The Accommodation Block of RAF Greatworth Park is located off the B4525 to the north west of the village of Greatworth in Northamptonshire (NGR: 455347 243505; Figure 1). The affected building was built around 1956/7 as accommodation for service personnel working at the transmitter station. It replaced a series of Nissen huts built during the 1940s which were located off-site to the south west. The buildings are a non-designated asset. The buildings are currently still partially in use as offices and sample processing site.

2.2 Rationale for the works

- 2.2.1 A programme of historic building recording (HBR) is required to record the physical fabric and setting of the former accommodation block at Greatworth Park prior to its demolition and permanent changes occurring as a result of construction activities associated with HS2. A Level 2 historic building recording will provide survey data concerning the physical fabric of the block, prior to its demolition, and contribute to GWSI: HERDS objectives:
- KC45: The conflicts of the 20th century define the history of modern Britain and the world: how can we achieve a greater understanding of the significance of sites associated with conflict to local communities along the route?

2.3 Methodology

- 2.3.1 The scope, rationale, aims and objectives for historic building recording are set out in the Project Plan for Historic Building Recording at Greatworth Park (Doc No: 1EW03-FUS-EV-REP-CS07_CL25-002565) which provided the methodology for a level 2 survey in accordance with Historic England guidance (HE 2016). Further specific details setting out how the works would be delivered were set out in the LS-WSI (Doc no: 1EW03-FUS-EV-REP-C000-009804).
- 2.3.2 These methodologies were adhered to during the site works, which also complied with health and safety procedures as outlined in the RAMS (1EW03-FUS-WAR-HS-MST-CS06_CLog-000001). The buildings were still in use as sample testing facility during the survey, a high number of pallets and sample bags remained within the structures. The buildings were largely accessible, although there were internal access issues to areas of the two-storey accommodation block due to ongoing works within the building. The environment of the buildings was greatly altered by the creation of a modern compound, which partially blocked views of the external elevations, in addition to some larger trees, thus impacted on the photographic output. In accordance with the project plan a sketch floor plan (Fig 2) of the buildings was prepared. For ease of reference internal spaces are numerically referenced, GF1-GF22 for the ground floor rooms, and FF1-FF17 for the first floor rooms.
- 2.3.3 Ongoing COVID-19 restrictions have meant that visits to specialist archives such as the Military Intelligence Museum, the Imperial War Museum and Historic England's aerial

photograph archive have not yet been possible, and that the community engagement element of the work, as set out in the Project Plan, has also not yet occurred. Thus, historical information provided in this document does not further our understanding of the structures beyond that contained within the Project Plan and is based information gained from veterans and sources held at the National Archives (NA) viewed during the preparation of the Project Plan. It is hoped that ahead of the final report being prepared, such restrictions will have been lifted, and all elements of the project as defined in the Project Plan will have been achieved.

3 Results

3.1 Historic Context and Map Regression

- 3.1.1 RAF Greatworth was established probably in 1939 to provide transmitters for Bletchley Park, though the land was not actually purchased from Balliol College until 1949. The National Archives hold records for RAF Greatworth, as a Wireless Transmitter Station from 1944, and as No. 962 Signals Unit from 1956-1960 (NA AIR 29/2945).
- 3.1.2 Aerial photographs (Plate 1) show that during the 1940s site accommodation comprised a series of Nissen huts arranged in a small compound located on the north side of the road that comes off the B4525 to the west of Greatworth. This location (NGR 454782 243342) is presently occupied by farm buildings but the original access and concrete hardstanding are still discernible. Photographs from the early 1950s (Plates 2-5) show accommodation to have comprised on the west side of the compound (Plate 2) a series of five corrugated iron Nissen huts (Plate 3) probably used for accommodation (Plate 4). On the east side and opposite the accommodation was a large Nissen hut probably housing a meeting room, mess and cookhouse (Plate 5), with ablutions and boiler house to the north. From the north-east of compound, a footpath headed east across fields towards the aerial farm.
- 3.1.3 Veteran memories suggest that the wartime facilities at RAF Greatworth were replaced and upgraded during the 1950s, corroborated by records at the National Archives for the 'reconstruction of technical accommodation (transmitter buildings)' dated 1949-1960 (NA AIR 2/11941). A new permanent transmitter building was under construction during the winter of 1954/5, and a new cable inserted beneath the highway in 1956 (NA MT 78/42/12). The accommodation block (the affected building) was apparently completed by 1957 as an inaugural dance was advertised to celebrate the opening of the 'new domestic accommodation at Royal Air Force Greatworth' on 28th February 1957 (RAF Greatworth website). Presumably on account of the military sensitivity of the Site, publicly available mapping is misleading. The accommodation block is first mapped in 1979 (Figure 2) whilst the transmitter block remains absent on maps until the 1990s, this despite the depiction of the extensive mast field. Following the removal of the Nissen huts and compound a new site entrance was formed in its present location, this leads directly to the transmitter building, the accommodation block is located off to the west.
- 3.1.4 The transmitter building (NGR 455343,243251), is located 180m to the south of the accommodation block. The building has not been inspected during preparation of this project plan as it lies both outside of the scope of HS2 and is in separate commercial use. Images of the building, including a sketch plan (Plate 6 reproduced on the RAF Greatworth website) show the building to be T-shaped of principally 2-storeys (Plate 7) and to have had a number of single storey detached ancillary buildings around it (Plate 8). The aerial farm was arranged over an extensive area principally to the west of the buildings and extended south beyond the transmitter building toward housing on Helmdon Road (Figure 2).

- 3.1.5 The accommodation block (the affected building) is located to the north of the transmitter building at the northern part of the Site. A concrete path way known as the 'Long Walk' linked the two buildings which were otherwise separated by an iron mesh fence (Plate 9). Other domestic facilities included a tennis court located east of the accommodation block.
- 3.1.6 The accommodation block seems to have been provided for single person living. Married quarters were provided within Greatworth along Helmdon Road in a terrace still identified as Astral Row (Astral being of the Stars, the RAF motto being per ardua ad astra). Astral House detached at the north end of the terrace was the senior officer's house. Housing along Astral Row features in many of the on-line veteran's photographs.
- 3.1.7 The precise layout and provision of facilities within the affected building is not recorded. It is assumed that as well as bedrooms the building included toilet and shower blocks, a mess room, kitchens and other communal space. In keeping with service accommodation provision during the post war era it is likely that personnel were accommodated in a mix of both dormitory type spaces as well as smaller 2 or 4 berth rooms (Plates 10).
- 3.1.8 The Site went out of military use during the late 1990s and was acquired for its current small business use known as Greatworth Park. Photographs of the affected building showing refurbishment works undertaken at that time (Plate 13) show removal of all the original windows and their replacement. The original doors on the south side also seem to be replacements and the canopies have been removed. Unfortunately there are no comparable photographs showing interior conditions and the integrity of the present ground floor open plan layout cannot be determined.

3.2 Description of the Buildings

- 3.2.1 An annotated ground floor plan is provided at Figure 3. A selection of photographs is provided in Appendix 1.
- 3.2.2 The complex comprises two L-shaped structures, a two storey and a one storey high, which were interconnected by a glazed vestibule (Plate 30) and a large workshop. Both blocks are covered with tiled gable roofs, which are of late 20th century date. The buildings are fully white rendered (Plates 15-30). The ground floor windows of the two-storey block are formed of glass bricks (Plates 15-21), while the first-floor windows and the windows of the one storey block are predominantly modern uPVC casement windows (Plates 25-28). Both styles of windows appear to be a modern alteration, installed in the course of the 1990s redevelopment of the site.
- 3.2.3 A large vertical crack can be observed in the north elevation of the east to west aligned section of the accommodation block (Plate 18). A fire escape staircase is situated at the west elevation (Plate 17). Although the render covers potential features and alterations, some areas of modifications could be noted along the elevations. The northern end of the north to south aligned two storey wing is clearly a later extension (Plate 20). A clear break in the fabric can be noted between the sections along the elevations and the roof line. The extension is most likely

of same age as the large workshop, which has been inserted adjoining it to the east (Plate 22). The workshop is made of concrete and box profile steel cladding.

- 3.2.4 Along the one storey eastern wing, several blocked off opening could be noted, such as at the blocked off doorway at the southern end of the east elevation of the north to south aligned section (Plate 26). This doorway is still indicated to by its situation in a low recess within the elevation, as well as the presence of a step towards it. Two blocked off openings could also be noted at the southern range of the east to west aligned section (Plate 28). A boot scraper could be noted to its immediate east.
- 3.2.5 The current main access to the buildings was via a small entrance hall (GF1; Plate 31) within the eastern corner of the south elevation of the two-storey accommodation block. Access via the glass vestibule has been closed off due to the deterioration of the flat roof of the structure. Overall, there are 22 spaces that could be defined on the ground floor level, of which six formed the more open plan layout of the large two storey accommodation block to the west (GF1-5, 10), and 13 form the one storey block to the east (GF6-8, 13-22). Three areas are modern features (GF9, 11 and 12). The large halls to the north between the two older structures (GF11 and 12) are two storeys high (Plate 48). A staircase is situated within GF12 at the south-west corner, as well as within a small hallway towards the central courtyard, which give access to the first floor gallery of the workshop hall.
- 3.2.6 The ground floor of the former accommodation block was, at the time of the survey, still in use and large areas could not be fully accessed due to a large quantity of pallets (Plates 32-39). The space was held as open plan storage area (Plate 32), with a small kitchen to the south (GF2). A staircase to the first floor was situated to the east of the entrance (GF1; Plate 31) and off the glass vestibule (GF10). The rooms are held in a plain design, with the elevations painted light and dark grey throughout. The floor comprises of painted concrete. A section of the flooring had been opened up and covered with gravel at the original northern end of the structure (Plate 34). The space to the far north, including another staircase to a gallery within the north extension, could not be accessed due to pallets (Plate 36). There are steel girders running east to west along the flat ceiling of the north to south aligned structure. The western elevation of the main room (GF3) is partially covered by shelving (Plate 32). All windows in this section of the building and the east to west aligned wing are formed of glass bricks, set in large window surrounds. One of such windows, set in the main room of the east to west aligned wing (GF5) appears to be set within a former doorway (Plate 38). Modern shutter gates were installed to the far west of this room (Plate 39), as well as at the centrally of the west elevation of GF3.
- 3.2.7 The first floor comprises 17 rooms, set around two main hallways (FF3 and FF8). Throughout the first floor, the elevations are white and carpet tiles had been laid in the greater part of the rooms. A few rooms contain laminate flooring. The hallways are accentuated by curved walls from the staircase (FF1; Plate 49). The east to west aligned wing is mostly open plan (Plate 50), with three rooms at the north elevation (FF5, 6, 10) and a room respectively in the south-west (FF7) and south-east (FF4) corners. North to south aligned girders could be noted along the ceiling, with a single east to west aligned girder crossing them. A fire escape door leading

to an external metal spiral staircase (Plate 51) is situated at the westernmost elevation. The fire escape is framed by two windows with glass bricks. The significant crack in the fabric noted on the exterior can also clearly be seen on the interior within the former office room FF5. Observations of the attic space could be made via hatches in the ceiling, revealing a fairly modern timber framed roof. The north to south aligned wing comprises a narrow hallway with rooms going off to each side (Plate 52). Internal windows provide lighting for the hallway. Rooms are separated with modern pre-fab partition walls (Plate 54).

- 3.2.8 Interconnecting the large accommodation block and the smaller eastern block were modern extensions, comprising two large halls to the north (GF11 and GF12), as well as the glass vestibule to the south (GF9), which replaced an older connecting structure. A corridor (GF6) from the main room in the north to south aligned section of the accommodation block also gives access to the south-western section of the eastern structure (Plates 40-41). This hallway has recently been partitioned into two sections (GF6 and GF15; Plates 40 and 56) to create the large storage area to the south-west, but still retaining free access to the remaining structure. Several doorways have been blocked off within the eastern section of the hallway (GF6; Plate 40). The storage rooms are the most modern refurbished rooms within the structure, with the large room (GF8) containing a modern kitchen unit at its northern end (Plates 42 and 43). The floor is covered in large tiles. A blocked off opening could be observed at the south elevation of the main room (GF8) and one large window has been blocked off at the east elevation (Plate 42). Other features were not discernible due to the level of shelving covering the walls.
- 3.2.9 Three windows have been retained at the northern elevations in GF13 and GF14, which once formed the external elevation of the eastern structure (Plate 47), as well as two small, square windows from the blocked off toilets towards the large hall (GF11; Plate 46). The greater part of the rooms in the eastern structure are painted in the same style as the accommodation block, with light and dark grey elevations and grey painted concrete flooring (Plates 54 – 63). A low number of rooms are painted white. All windows in this structure are modern uPVC casement windows. This area, especially the main room GF16, while seemingly of an open plan layout (Plates 58 and 59), contains several small partition walls, giving the appearance of several semi-private niches. A blocked off chimney breast could be observed in the eastern corner room (GF19; Plate 60), which could be accessed from the main room GF16. Adjacent to this room, a blocked doorway could be noted at the eastern end of GF16 (Plate 59). Two boiler rooms (GF17 and 18) are situated at the western end of the main room GF16 (Plate 57). A shutter gate towards the northern courtyard had been inserted to the immediate east of the northern boiler room (GF18).
- 3.2.10 The north-eastern section of the structure had been converted into a testing area (Plates 61 and 62), with a blocked off test room. A modern steel double doorway leads into the test room from GF22 (Plate 61), as well as from the exterior. The inner courtyard to the north of the eastern structure could be accessed via a doorway within GF21 (Plate 63). The courtyard is enclosed with an east to west aligned partition wall (Plate 64 and 65). At the time of the survey, the courtyard contained some waste. To the north-west is a small storage shed (Plate 65), which abuts the partition wall.

- 3.2.11 Throughout the buildings, a variety of door styles could be observed: Steel doors, timber doors with circular windows, timber doors with rectangular fan lights and simple timber doors. It is likely that the doors with the circular windows and the doors with the fan lights are original doors to its construction in 1956/7. They also appear in combination with each other. The blocked off doorway between the hallway GF6 and vestibule GF9 also shows a large fanlight above the door, which further supports this theory.
- 3.2.12 The surrounding area has been greatly impacted upon by the compound that has been established around the buildings in recent times (Plates 66 and 67). The former tennis court had been converted into a car park (Plate 66). A large shed is situated in the courtyard to the north of the accommodation block and various containers are set around the building (Plates 21 and 67).

3.3 Analysis

- 3.3.1 The map and historic photographic evidence determine that the buildings have been noticeably altered in recent modern times (1990s) in the course of modernisation and change of function.
- 3.3.2 Photographs of the affected building in the late 1950's (Plates 14 and 15) show it largely in its present form including the entrance vestibule and attached mess rooms. The principal entrance was within the vestibule with additional entrances beneath canopies at the southern flank of the accommodation wing as well as to the east of the mess rooms. Chimneys were located at the north and south sides of the accommodation building and one at the mess rooms. All windows throughout the building were originally multi-pane sashes.
- 3.3.3 The one storey structure was originally flat roofed, with one chimney to the south. A doorway was set at the southern end of the east elevation, which had been fully blocked off. To the south of this, a chimney is visible, which matches the location of the plain chimney breast that could be observed in the small corner room (GF19). Five openings, potentially a gateway and several windows, were closed off at the south elevation of the east to west aligned section of the eastern block. A further window was closed off at the east elevation and a gateway at the south elevation of the southwards protruding structure. The current glass vestibule replaced an older structure, which contained four square windows.
- 3.3.4 The north-south aligned section of the accommodation block had been extended to the north, replacing a one storey boiler house. Aerial photographs clearly show a break in the fabric where the building originally ended. The brick chimney stack had been removed at this end. The second chimney, at the south-eastern corner of the accommodation block, is still present. A blocked off chimney breast had been noted on the ground floor level of the large east to west aligned section, which would correlate with this. The ground floor windows of the accommodation block had been extended, to create the large glass block windows. Two bays of windows at the southern end of the east elevation have been blocked off, comprising four square windows on ground floor level and two larger windows at first floor level. An additional three windows had been blocked off at the northern end of the east elevation. A roller gate

had been inserted at the western end of the south elevation, and a further three windows had been blocked off towards the eastern end.

- 3.3.5 A former RAF member stationed at this base described the buildings as follows: *the ground floor was a combination of kitchen, airman's mess and Sergeants mess. Looking from the garages, the Sergeants mess was to the left of the main door and the airman's mess and kitchens were straight ahead. Airman's accommodation took up most of the upper floor, immediately above the Kitchens were the airman ablutions (Toilets, Showers and Sinks) a laundry closet for sheets and blankets and the remainder of the upper floor was dormitories that would held up to four beds, most and only two people per room.*
- 3.3.6 *During my time, the building to the right of the main entrance that joins at the rear of the Airmen's accommodation held the Junior Ranks Club. When I was there this was a self-funding bar that was run/maintained by the airmen themselves on a rota basis after the NAAFI pulled off the site with some assistance from the Service Institute Fund (SIF). Parts of the building were given over to the RAFA and ATC (Royal Air Forces Association and Air Training Corps).*
- 3.3.7 This would indicate that the east to west aligned section of the accommodation building (GF1, 2 and 5) were the Sergeants mess, and the north to south aligned section were the airman's mess and kitchen. It is likely that the kitchen was situated at the northern end with the large chimney stack that was once situated there. It is likely that the one storey structure was used as a club or entertainment venue.

4 Recommendations for further works

- 4.1.1 The structures at Greatworth Park survive relatively intact, although some areas of significant alterations from recent decades could be noted. Not many potentially original historic fittings and features could be noted at the time of the survey. The limitations of the survey, however, would require further works of enhanced recording and survey, to make a significant contribution to HERDS objective KC45.
- 4.1.2 The two-storey accommodation block was still in use as sample testing facility. This, combined with an accumulation of pallets and soil samples on the floors of both structures, means that it is possible that there are additional features which would also be of historic interest which have not yet been addressed/recorded. In addition, some areas of the exterior were obscured by the current compound created around the structures.
- 4.1.3 It is therefore recommended that a further programme of recording is undertaken to fully record the structures following the full clearance of the site. Monitor activities during the soft strip phase of demolition may be recommended to ascertain the potential for original features which may have been covered with modern interventions.
- 4.1.4 It may also be possible to access the roof during the demolition phase, perhaps by scaffolding or a cherry picker, or to safely analyse the still present chimney which has been part of the original design, once it has been removed in its entirety to ground level.
- 4.1.5 Observation during demolition activities would provide additional evidence concerning the origin and purpose of each of the structures and better reveal the significance of the fabric and roof structures.
- 4.1.6 The following works are recommended:
- Undertake a full survey of the two-storey accommodation block following the full clearance of the building;
 - Investigate and record the chimney and roof, either by safely accessing the roof, or analysing the structures once they have been carefully removed, intact, and lowered to ground level;
 - Advise and monitor of removal of carpet/laminate within the first floor;
 - Observe and monitor soft strip activities in GF5 and GF19 to determine remnants of former fireplaces;
 - Observe and monitor soft strip activities within the first floor to determine original layout.
- 4.1.7 This is to provide an enhanced ground floor plan survey showing presence of original features including all structural breaks, changes in fabric and other factors that assist in interpretation and phasing.

5 References

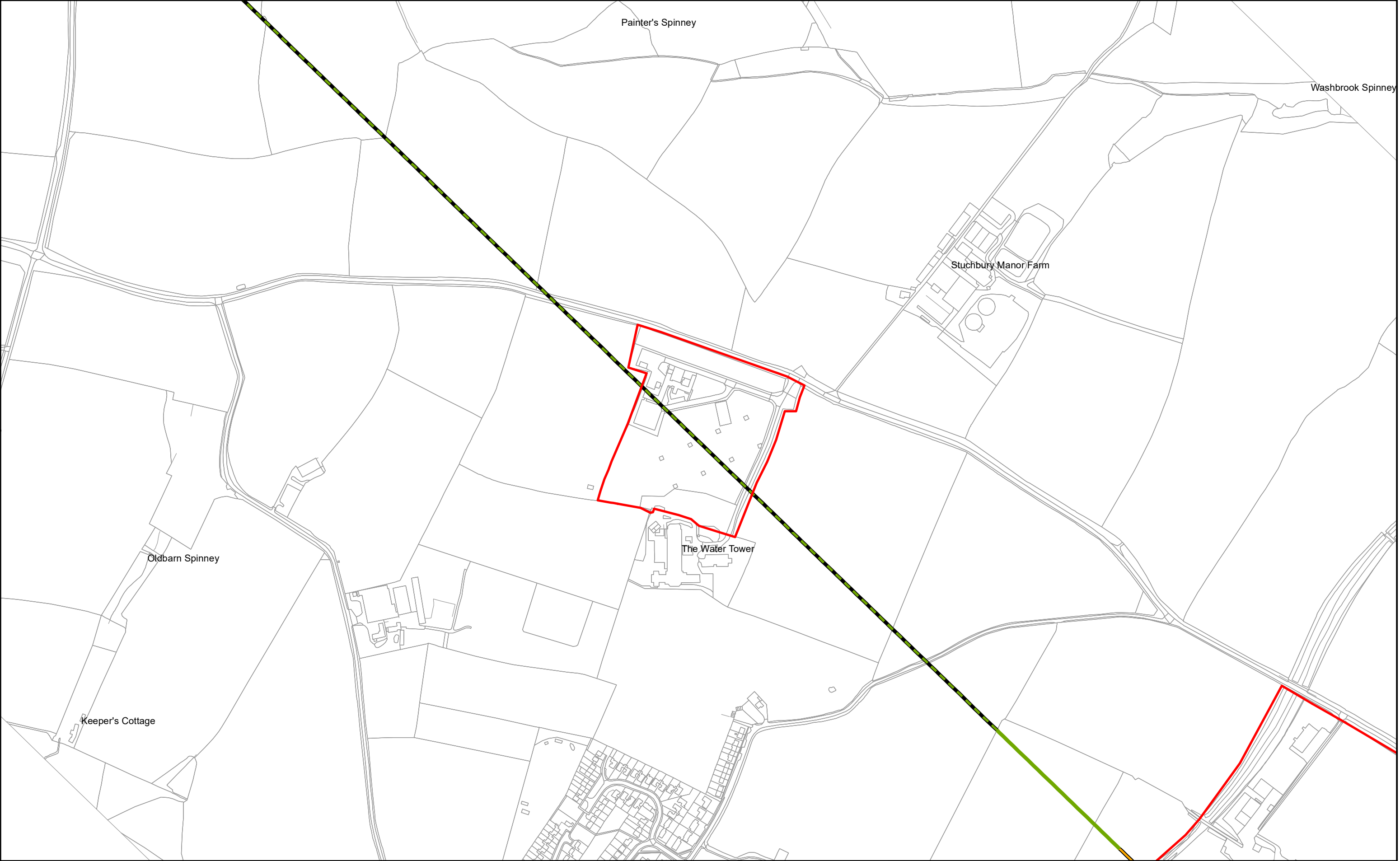
Site Specific Documents

Title	Reference
Project Plan for Historic Building Recording at Greatworth Park Northamptonshire	1EW03-FUS-EV-REP-CS07_CL25-002565
Location Specific Written Scheme of Investigation Historic Building Recording; Historic Landscape Study and Setting	1EW03-FUS-EV-REP-C000-009804

Other References

Historic England 2016 Understanding Historic Buildings: A Guide to Good Recording Practice	Historic England 2016
HS2 Technical Standard: Generic Written Scheme of Investigation: Historic Environment Research and Delivery Strategy	HS2-HS2-EV-STR-000-000015
Military Structures: Listing Selection Guides	Historic England 2017
RAF Greatworth website, https://raf-greatworth.com/	RAF Greatworth 2019
	NA AIR 29/2945
	NA AIR 2/11941

FIGURES



HS2 Ltd accept no responsibility for any circumstances, which arise from the reproduction of this map after alteration, amendment or abbreviation or if it issued in part or issued incomplete in any way.

© Crown copyright and database rights 2021
OS 100049190

Derived from (...cite the scale of the BGS data used...) scale BGS Digital Data under licence 2011/111 BP British Geological Survey. © NERC.

Contains Environment Agency information © Environment Agency and database right.

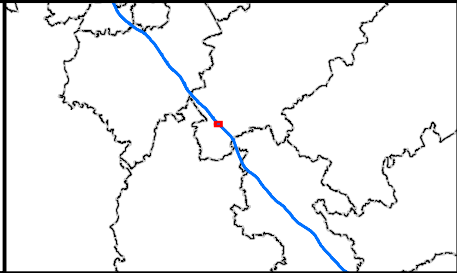
© Crown copyright material is reproduced with the permission of Land Registry under delegated authority from the Controller of HMSO.

This material was last updated on [date] and may not be copied, distributed, sold or published without the formal permission of Land Registry and Ordnance Survey. Only an official copy of a title plan or register obtained from the Land Registry may be used for legal or other official purposes. © Crown Copyright Ordnance Survey.

Legend


- Study Area
- Cutting
- Embankment
- Green Tunnel

Phase One Final Preliminary Design alignment January 2017





High Speed Two
Figure 1: Location of study area

Published



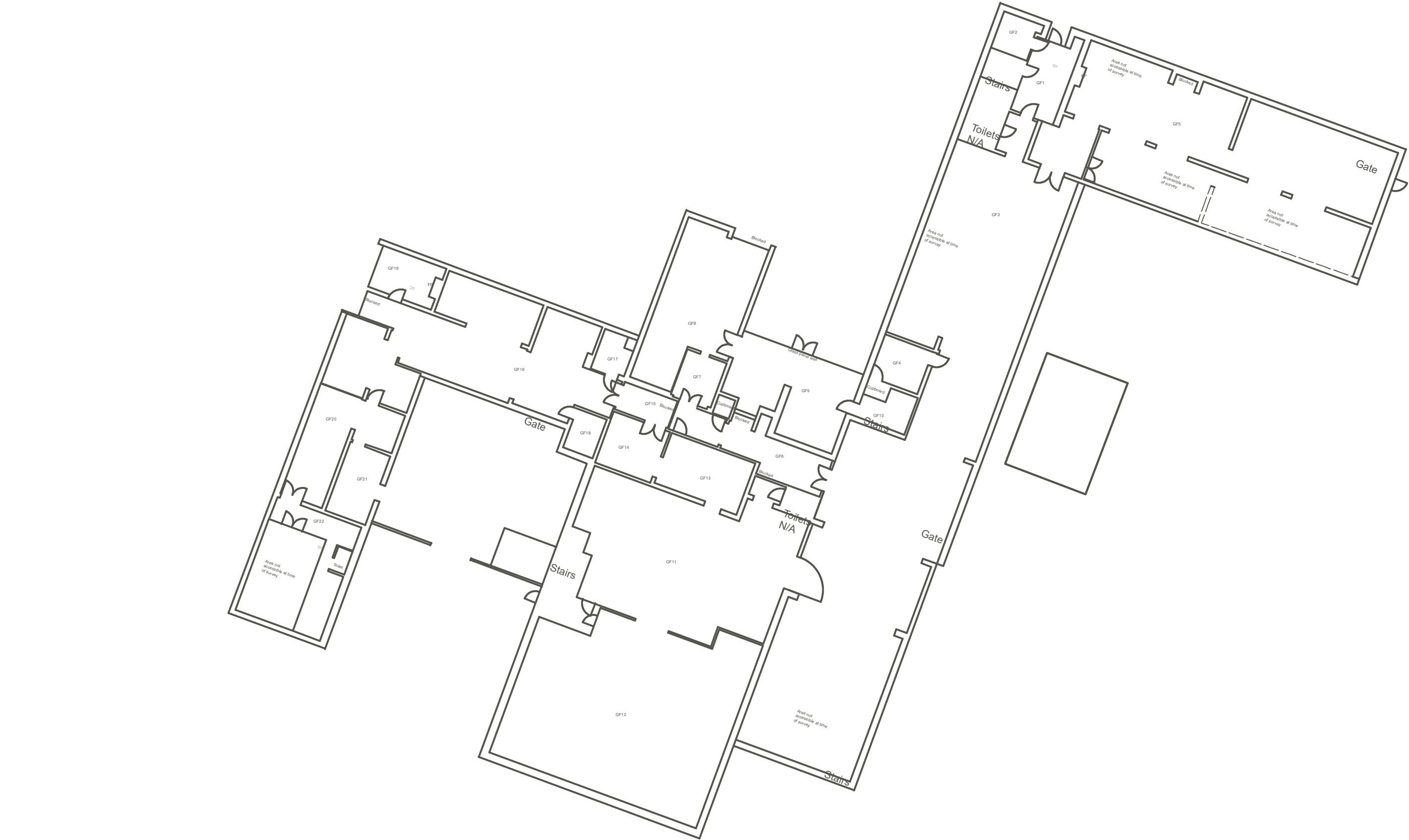
Registered in England. Registration number 06791686.
Registered office: 2 Snowhill, Queensway, Birmingham B4 6GA.

Scale at A3: 1:5,000



Date: 14/06/21

Doc Number: 1EW03-FUS-WAR-GI-MAP-CS07_CL25-000001



HS2 Ltd accept no responsibility for any circumstances, which arise from the reproduction of this map after alteration, amendment or abbreviation or if it issued in part or issued incomplete in any way.

© Crown copyright and database rights 2021
OS 100049190

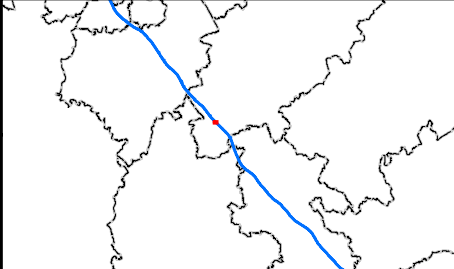
Derived from (...cite the scale of the BGS data used...) scale BGS Digital Data under licence 2011/111 BP British Geological Survey. © NERC.

Contains Environment Agency information © Environment Agency and database right.

© Crown copyright material is reproduced with the permission of Land Registry under delegated authority from the Controller of HMSO.

This material was last updated on [date] and may not be copied, distributed, sold or published without the formal permission of Land Registry and Ordnance Survey. Only an official copy of a title plan or register obtained from the Land Registry may be used for legal or other official purposes. © Crown Copyright Ordnance Survey.

Legend



High Speed Two
Figure 3: Annotated ground floor plan

Published

HS2

Registered in England. Registration number 06791686.
Registered office: 2 Snowhill, Queensway, Birmingham B4 6GA.

Scale at A3: Not to scale



Doc Number: 1EW03-FUS-WAR-GI-MAP-CS07_CL25-000001

Date: 14/06/21

APPENDIX 1: PLATES



Plate 1: Location of earliest RAF Greatworth complex (1945 Google Earth imagery)



Plate 2: Nissen huts providing accommodation for RAF Greatworth, facing north (RAF Greatworth 2019)



Plate 3: Building providing mess, classroom etc for RAF Greatworth, facing south-east (RAF Greatworth 2019)



Plate 4: Earliest RAF Greatworth accommodation complex, facing north-east (RAF Greatworth 2019)



Plate 5: Location of earliest RAF Greatworth transmitter building (RAF Greatworth 2019)

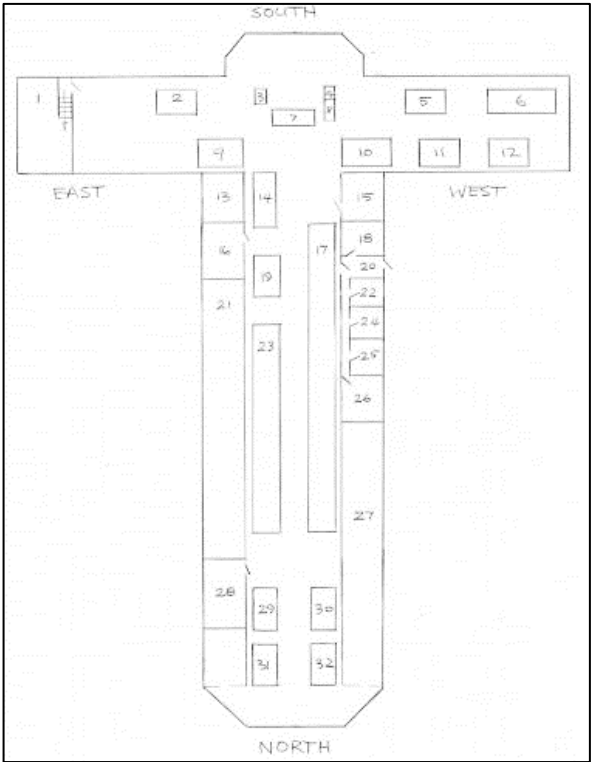


Plate 6: Floorplan of transmitter hall (RAF Greatworth 2019)

AWHj

Interim Report Historic Building Recording Historic Building Recording Accommodation Block RAF Greatworth Park

Document Number: 1EW03-FUS_WAR-EV-REP-CS07_CL25-000001

Revision: Co1



Plate 7: Replacement transmitter building from south-east, facing north-west (RAF Greatworth 2019)



Plate 8: Transmitter building with adjacent buildings, facing west (RAF Greatworth 2019)



Plate 9: The 'long walk', 'aerial farm' and transmitter building complex taken from the south of the accommodation complex (RAF Greatworth 2019)

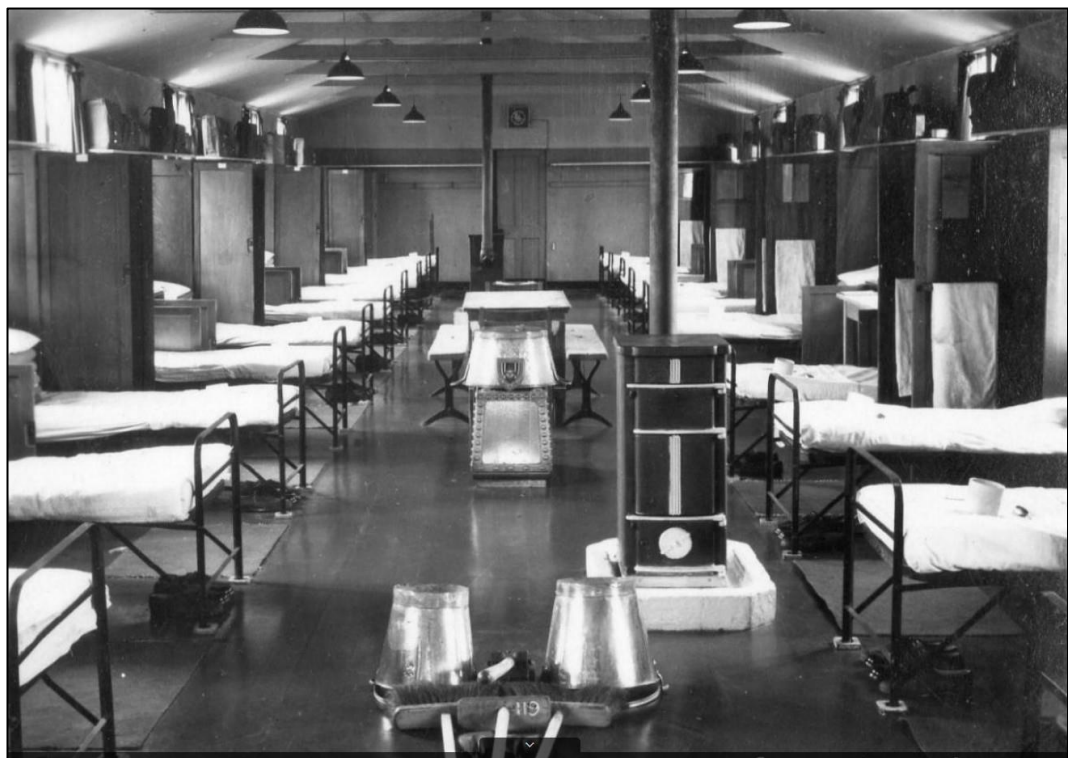


Plate 10: Sleeping space at RAF Greatworth, nd (RAF Greatworth 2019)

AWHj

Interim Report Historic Building Recording Historic Building Recording Accommodation Block RAF Greatworth Park

Document Number: 1EW03-FUS_WAR-EV-REP-CS07_CL25-000001

Revision: C01



Plate 11 Sleeping space at RAF Greatworth, 1967 (RAF Greatworth 2019)



Plate 12: Accommodation complex from the east, facing west, late 1950s (RAF Greatworth 2019)



Plate 13: South-west facing elevation of accommodation complex, facing east, 1957 (RAF Greatworth 2019)



Plate 14: South-western elevation of accommodation complex in 1999 (RAF Greatworth 2019)

AWHj

Interim Report Historic Building Recording Historic Building Recording Accommodation Block RAF Greatworth Park

Document Number: 1EW03-FUS_WAR-EV-REP-CS07_CL25-000001

Revision: C01



Plate 15: Accommodation block south elevation



Plate 16: Accommodation block south elevation west corner

AWHj

Interim Report Historic Building Recording Historic Building Recording Accommodation Block RAF Greatworth Park

Document Number: 1EW03-FUS_WAR-EV-REP-CS07_CL25-000001

Revision: C01



Plate 17: Accommodation block west elevation with fire escape

AWHj

Interim Report Historic Building Recording Historic Building Recording Accommodation Block RAF Greatworth Park

Document Number: 1EW03-FUS_WAR-EV-REP-CS07_CL25-000001

Revision: C01



Plate 18: Accommodation block north elevation with crack in fabric



Plate 19: Accommodation block west elevation with shed to the front

AWHj

Interim Report Historic Building Recording Historic Building Recording Accommodation Block RAF Greatworth Park

Document Number: 1EW03-FUS_WAR-EV-REP-CS07_CL25-000001

Revision: C01



Plate 20: Accommodation block west elevation with noticeable break in fabric to north extension



Plate 21: Accommodation block courtyard

AWHj

Interim Report Historic Building Recording Historic Building Recording Accommodation Block RAF Greatworth Park

Document Number: 1EW03-FUS_WAR-EV-REP-CS07_CL25-000001

Revision: C01



Plate 22: Accommodation block north elevation with modern workshop



Plate 23: Modern workshop extension

AWHj

Interim Report Historic Building Recording Historic Building Recording Accommodation Block RAF Greatworth Park

Document Number: 1EW03-FUS_WAR-EV-REP-CS07_CL25-000001

Revision: C01



Plate 24: East section north elevation and courtyard boundary wall



Plate 25: East section east elevation

AWHj

Interim Report Historic Building Recording Historic Building Recording Accommodation Block RAF Greatworth Park

Document Number: 1EW03-FUS_WAR-EV-REP-CS07_CL25-000001

Revision: C01



Plate 26: East section east elevation blocked doorway



Plate 27: East section south elevation

AWHj

Interim Report Historic Building Recording Historic Building Recording Accommodation Block RAF Greatworth Park

Document Number: 1EW03-FUS_WAR-EV-REP-CS07_CL25-000001

Revision: C01



Plate 28: East section south-western structure west elevation with blocked off window



Plate 29: Accommodation block west elevation

AWHj

Interim Report Historic Building Recording Historic Building Recording Accommodation Block RAF Greatworth Park

Document Number: 1EW03-FUS_WAR-EV-REP-CS07_CL25-000001

Revision: C01



Plate 30: Modern vestibule



Plate 31: GF1 entrance room with kitchen and staircases

AWHj

Interim Report Historic Building Recording Historic Building Recording Accommodation Block RAF Greatworth Park

Document Number: 1EW03-FUS_WAR-EV-REP-CS07_CL25-000001

Revision: C01



Plate 32: GF3 looking south



Plate 33: GF3 doorway to GF4

AWHj

Interim Report Historic Building Recording Historic Building Recording Accommodation Block RAF Greatworth Park

Document Number: 1EW03-FUS_WAR-EV-REP-CS07_CL25-000001

Revision: Co1



Plate 34: GF3 gravel area



Plate 35: GF3 doorway to GF6 and extension GF11

AWHj

Interim Report Historic Building Recording Historic Building Recording Accommodation Block RAF Greatworth Park

Document Number: 1EW03-FUS_WAR-EV-REP-CS07_CL25-000001

Revision: C01



Plate 36: GF3 north section with gallery



Plate 37: GF5 general view west

AWHj

Interim Report Historic Building Recording Historic Building Recording Accommodation Block RAF Greatworth Park

Document Number: 1EW03-FUS_WAR-EV-REP-CS07_CL25-000001

Revision: C01



Plate 38: GF5 blocked doorway

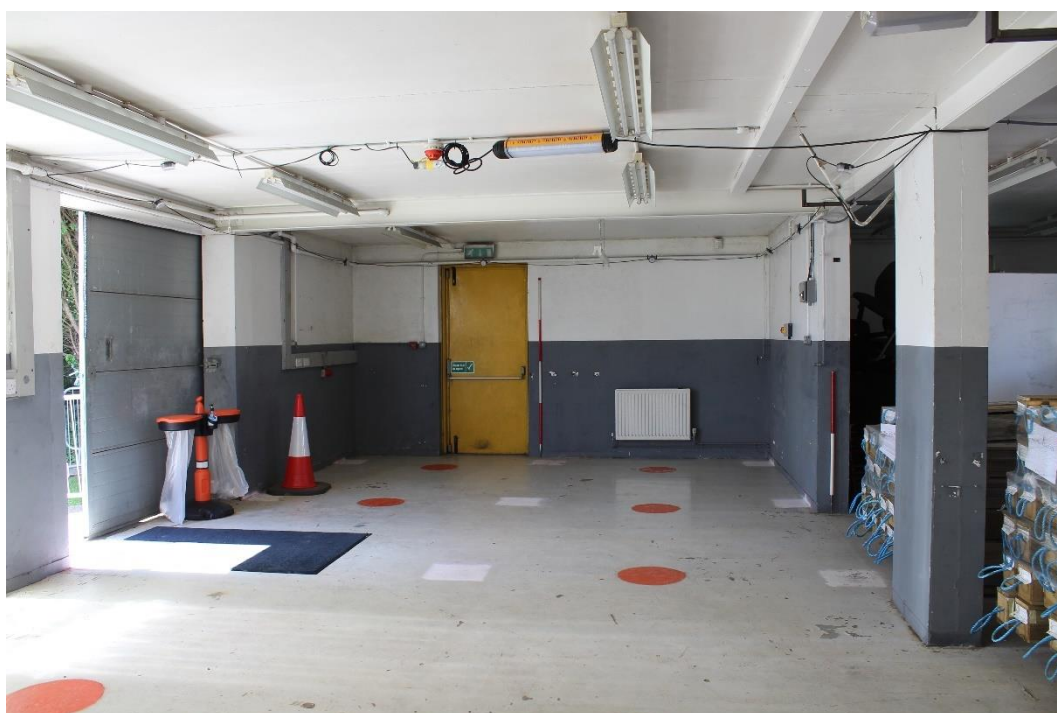


Plate 39: GF5 western section, gate and emergency exit

AWHj

Interim Report Historic Building Recording Historic Building Recording Accommodation Block RAF Greatworth Park

Document Number: 1EW03-FUS_WAR-EV-REP-CS07_CL25-000001

Revision: Co1



Plate 40: GF 6 blocked doorway with fanlight to GF9

AWHj

Interim Report Historic Building Recording Historic Building Recording Accommodation Block RAF Greatworth Park

Document Number: 1EW03-FUS_WAR-EV-REP-CS07_CL25-000001

Revision: C01



Plate 41: GF6 view towards east to GF15



Plate 42: GF8 blocked off window

AWHj

Interim Report Historic Building Recording Historic Building Recording Accommodation Block RAF Greatworth Park

Document Number: 1EW03-FUS_WAR-EV-REP-CS07_CL25-000001

Revision: C01



Plate 43: GF8 looking north towards modern kitchen



Plate 44: GF9 Vestibule



Plate 45: GF9 Blocked doorway to GF6



Plate 46: GF11 view towards toilets and GF13

AWHj

Interim Report Historic Building Recording Historic Building Recording Accommodation Block RAF Greatworth Park

Document Number: 1EW03-FUS_WAR-EV-REP-CS07_CL25-000001

Revision: C01



Plate 47: GF11 view towards internal windows at GF13



Plate 48: GF12 general view

AWHj

Interim Report Historic Building Recording Historic Building Recording Accommodation Block RAF Greatworth Park

Document Number: 1EW03-FUS_WAR-EV-REP-CS07_CL25-000001

Revision: Co1



Plate 49: FF1 hallway with curved walls



Plate 50: FF3 open plan office

AWHj

Interim Report Historic Building Recording Historic Building Recording Accommodation Block RAF Greatworth Park

Document Number: 1EW03-FUS_WAR-EV-REP-CS07_CL25-000001

Revision: C01

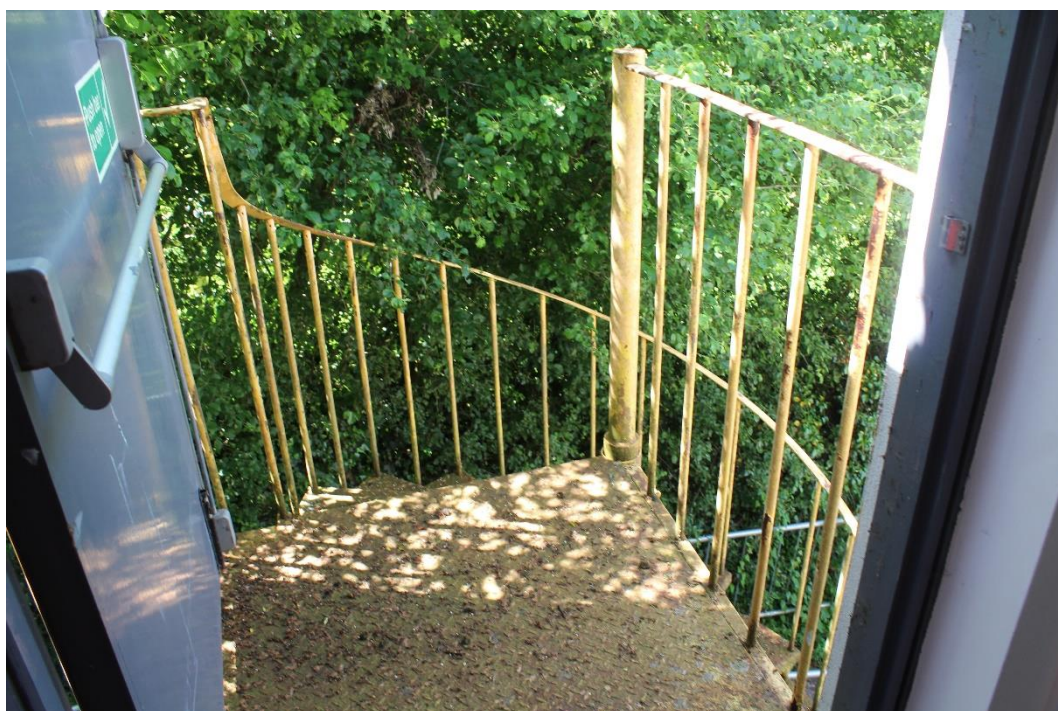


Plate 51: Fire escape at west elevation of FF3

AWHj

Interim Report Historic Building Recording Historic Building Recording Accommodation Block RAF Greatworth Park

Document Number: 1EW03-FUS_WAR-EV-REP-CS07_CL25-000001

Revision: C01



Plate 52: FF8 hallway general view north

AWHj

Interim Report Historic Building Recording Historic Building Recording Accommodation Block RAF Greatworth Park

Document Number: 1EW03-FUS_WAR-EV-REP-CS07_CL25-000001

Revision: C01



Plate 53: Modern pre-fab partition wall



Plate 54: GF13 with doorway towards GF6

AWHj

Interim Report Historic Building Recording Historic Building Recording Accommodation Block RAF Greatworth Park

Document Number: 1EW03-FUS_WAR-EV-REP-CS07_CL25-000001

Revision: C01



Plate 55: GF14 view towards GF15



Plate 56: GF15 blocked wall towards GF6

AWHj

Interim Report Historic Building Recording Historic Building Recording Accommodation Block RAF Greatworth Park

Document Number: 1EW03-FUS_WAR-EV-REP-CS07_CL25-000001

Revision: C01

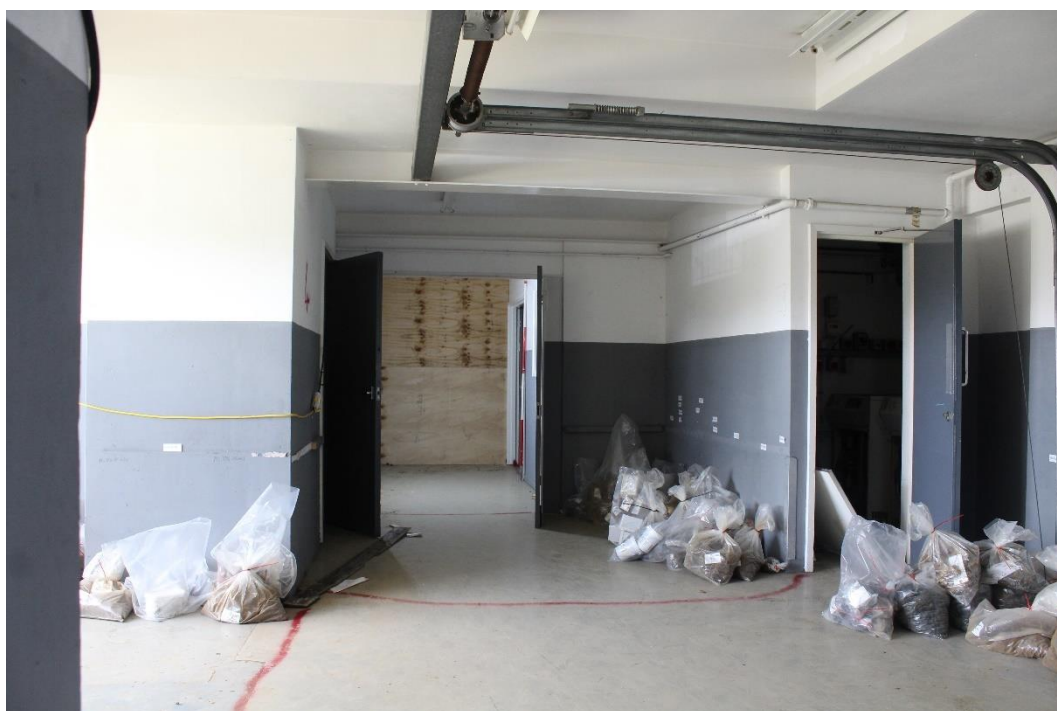


Plate 57: GF16 view towards GF17 and GF18



Plate 58: GF16 general view west

AWHj

Interim Report Historic Building Recording Historic Building Recording Accommodation Block RAF Greatworth Park

Document Number: 1EW03-FUS_WAR-EV-REP-CS07_CL25-000001

Revision: C01



Plate 59: GF16 blocked off doorway



Plate 60: GF19 blocked fireplace

AWHj

Interim Report Historic Building Recording Historic Building Recording Accommodation Block RAF Greatworth Park

Document Number: 1EW03-FUS_WAR-EV-REP-CS07_CL25-000001

Revision: C01

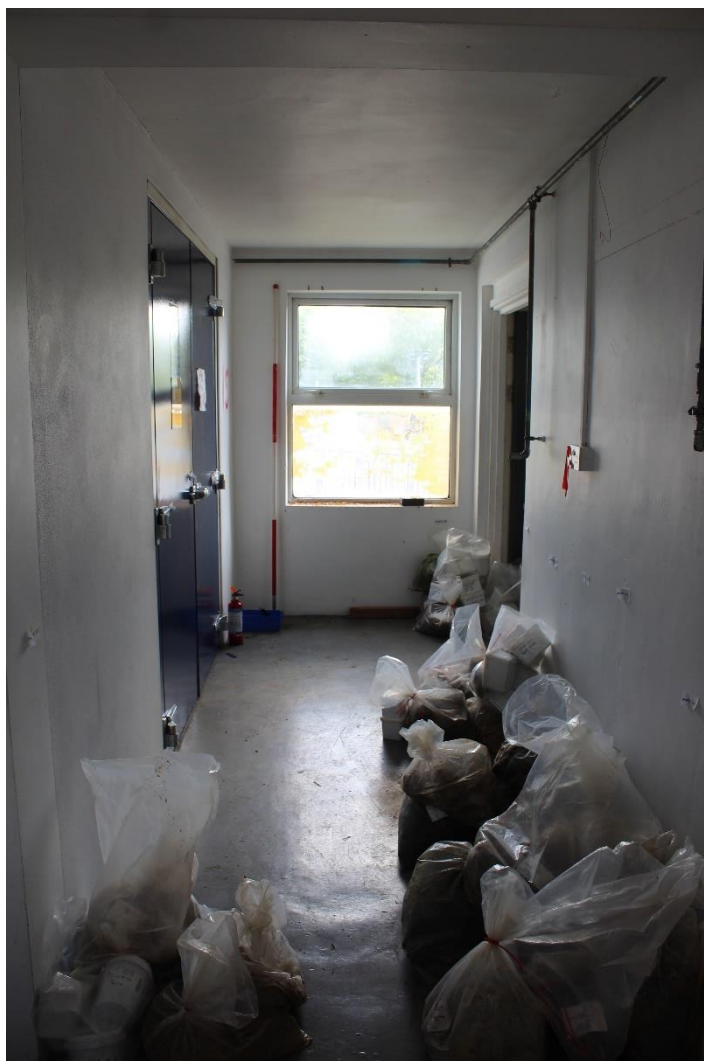


Plate 61: GF22 with blocked double door to test room

AWHj

Interim Report Historic Building Recording Historic Building Recording Accommodation Block RAF Greatworth Park

Document Number: 1EW03-FUS_WAR-EV-REP-CS07_CL25-000001

Revision: C01



Plate 62: GF22 view south

AWHj

Interim Report Historic Building Recording Historic Building Recording Accommodation Block RAF Greatworth Park

Document Number: 1EW03-FUS_WAR-EV-REP-CS07_CL25-000001

Revision: C01



Plate 63: GF21 doorway to courtyard



Plate 64: Enclosed Courtyard

AWHj

Interim Report Historic Building Recording Historic Building Recording Accommodation Block RAF Greatworth Park

Document Number: 1EW03-FUS_WAR-EV-REP-CS07_CL25-000001

Revision: Co1



Plate 65: Enclosed courtyard, view to shed and modern workshop



Plate 66: Site of former tennis court

AWHj

Interim Report Historic Building Recording Historic Building Recording Accommodation Block RAF Greatworth Park

Document Number: 1EW03-FUS_WAR-EV-REP-CS07_CL25-000001

Revision: C01



Plate 67: General view across compound