

OXFORD ARCHAEOLOGY NORTH

TRENCH RECORD

QA (N) 4

PROJECT NAME: RYNICH RELIEF ROAD PROJECT CODE: PRR20 SITE CODE: L11309

LOCATION: TRENCH 35 N (SOUTHERN EXTENT) TRENCH NO: SOUTH 35 N EXTENT

ALIGNMENT: N/S → E/W

LENGTH: Approx 49m

WIDTH:

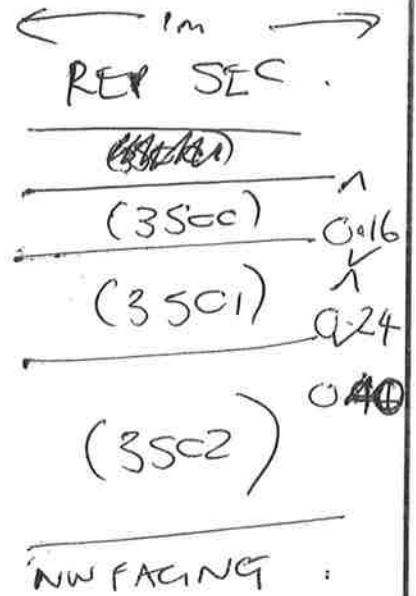
MAX. DEPTH: 0.80m

LEVELS:

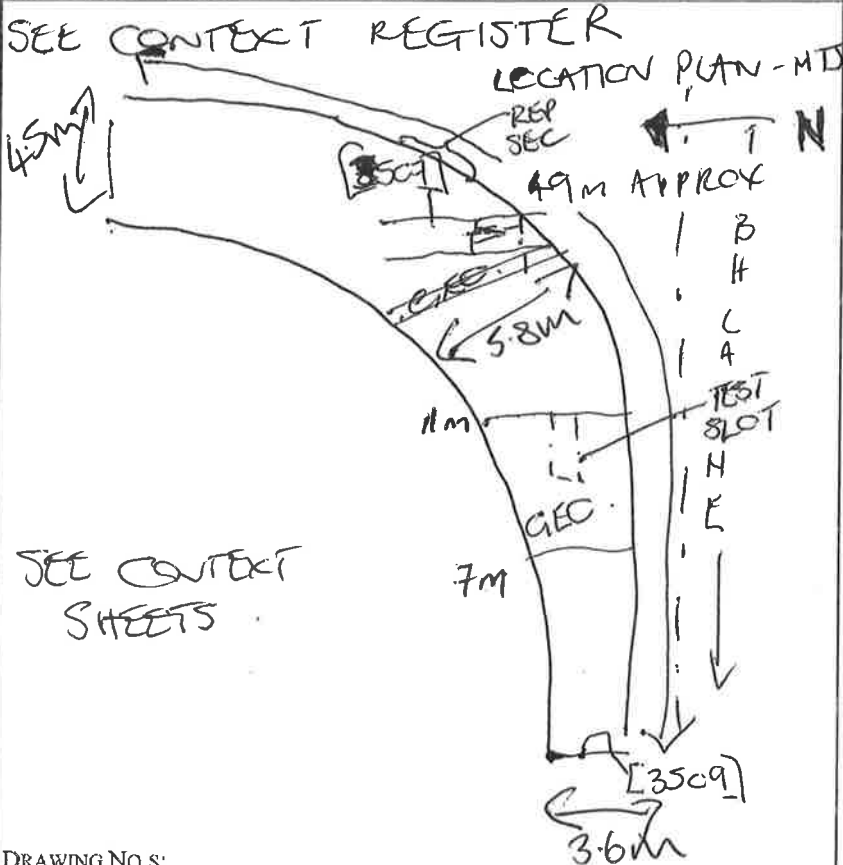
CO-ORDINATES: NW CORNER: /

SW CORNER: /

SKETCH PLAN



NOTES/COMMENTS:  
 (METHODS / SUMMARY OF RESULTS / MAJOR CONTEXTS)



DRAWING NO.S:

CONTEXT NO.S: (3500) (3501) (3502) [3507] (3508)

FINDS: [3509] (3510) (3511)

PHOTOGRAPHS / FILM NO.S: 101.0701 → 101.0705

SURVEY DATA: 101-0706 - 0720  
 101-0696 - 0700

COMPILED BY: AMT

DATE: 4/6/21

APPROXIMATE SCALE:

N

101.0721 → 101.0735



N → NTS

Key



- Strip Area

○ - Scheduled Monument

□ - 1m Rep sec ①-⑥

