

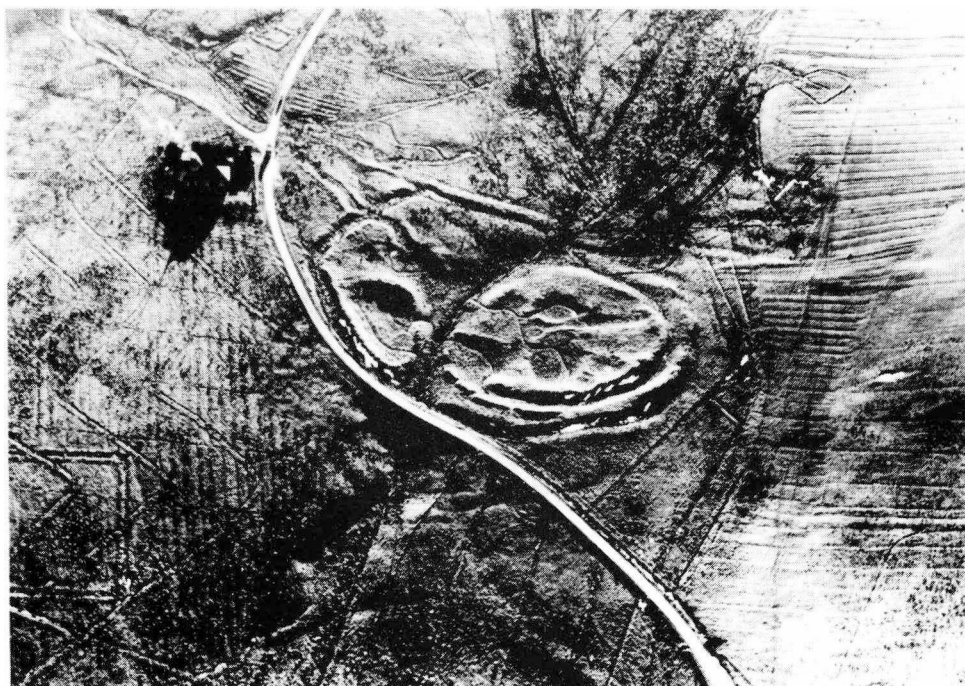




The Dod

Burgh Hill, Bivallate Settlement  
and Medieval Settlement

Photo : M. Brookes (S. D. D. / C. E. U.)



The Dod

Photo : M. Brookes (S. D. D. / C. E. U.)

Smith : Excavations at The Dod

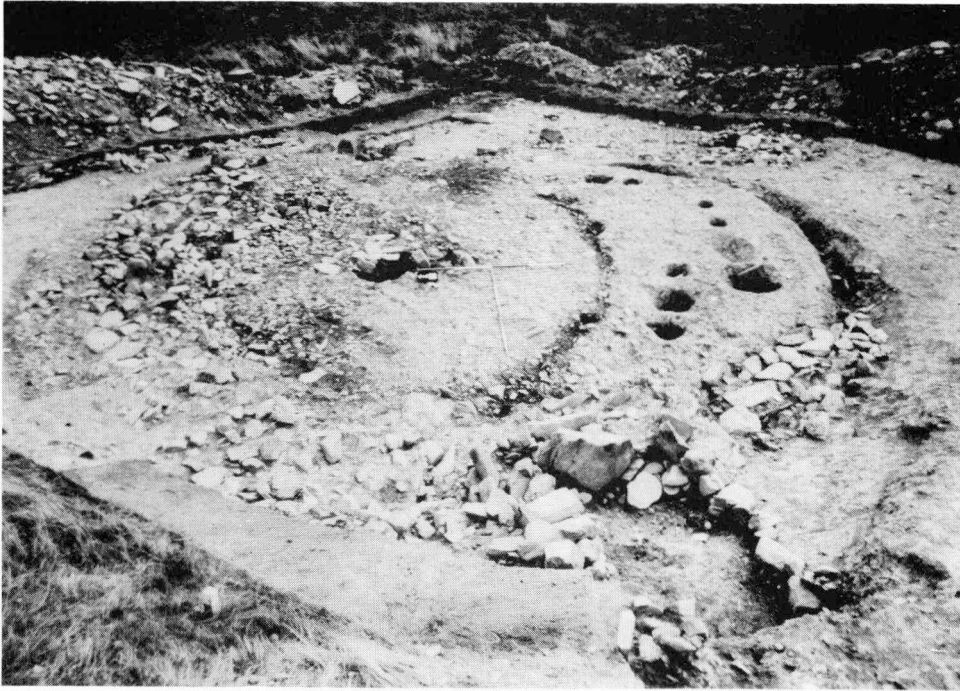


Area XVI : Prior to Excavation



Area XVI : After Sectioning and Removal  
of the Banks and Ditches

Smith : Excavations at The Dod



Area VI : The main Round-House during the latter stages of Excavation



Area VI :  
Extending back into, and cutting through the site's inner rampart, was a souterrain-type structure; seen here after the removal of its fill.



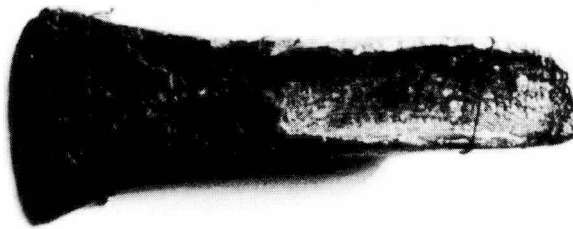


Area XIX : Entrance to the D-shaped enclosure,  
viewed from the interior.



Area XVIII : Structural deposits during excavation.

Smith : Excavations at The Dod



The Cartington Knife, The Tosson Burgh Axe, and the Simonside "Terminals" on display.

Reproduced by kind permission of the Society of Antiquaries of Newcastle upon Tyne, from a glass slide in their safe-keeping.

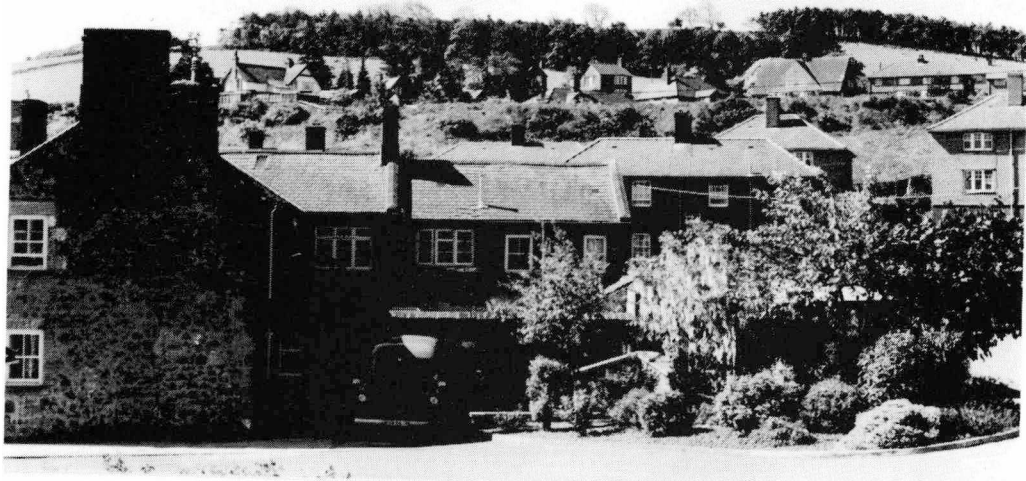
Welfare : The Bronze Knife from Cartington, Northumberland.



Plate 1

Welfare : Flanged and socketed axes, Rothbury. A Note upon a short flanged axe from the neighbourhood of Rothbury, Northumberland; and upon a socketed axe of Type Yorkshire, from Warton, Thropton, Northumberland.

Plates courtesy of John Schwerdt and Partners



The Cheviot Field Centre and Museum, Wooler.



The Lounge Area, before conversion.

Burgess : The Cheviot Field Centre and Museum.



Plates courtesy of John Schwerdt and Partners



The East Wing, before conversion into bedrooms.



The old Council chambers.

Burgess : Cheviot Field Centre and Museum.