

**Institute of Archaeology and Ethnography
of Azerbaijan National Sciences Academy**

DETAILED SCIENTIFIC REPORT
Excavations at Əmirarx settlement KP182.5
SCPX pipeline

Author of report:

VAQIF ARIF OGHLU ƏSƏDOV

Senior research fellow at

Institute of Archaeology and Ethnography,

PhD in
History

Baku, Azerbaijan

2018

1 SUMMARY

The report provides information on the progress of the archaeological excavations carried out from September 10, 2015 to October 17, 2015 in the Amirarx medieval settlement, which was discovered outside the Amirarx village of the Aghdash district at KP 182.500 of the main gas export pipeline corridor under the SCPX project, as well as the revealed remains of tangible cultural heritage. Furnaces, tandir ovens, ash layers, as well as abundant ceramic, metal and items of stone, were discovered there during the excavations. Archaeological data illustrating the economic activities and domestic life of the residents of this rural settlement was obtained on the site. According to the analysis of the archaeological content, it was established that it was a medieval settlement that served as a rural habitat in the 13th-15th centuries.

Contents

1	SUMMARY	1
2	INTRODUCTION	2
2.1	SITE DISCOVERY	2
2.2	BRIEF DESCRIPTION OF THE SITE	2
2.3	TIMING OF THE EXCAVATIONS	2
3	OUTCOME OF EXCAVATIONS.....	2
3.1	GENERAL DESCRIPTION OF THE SITE.....	2
3.2	TANDIR OVENS:.....	10
3.3	CERAMIC:	12
3.4	METAL ITEMS:	16
3.5	DESCRIPTIONS OF ARTEFACTS OF SPECIFIC AND SPECIAL IMPORTANCE	16
3.6	GENERAL ANALYSIS OF RESULTS ACHIEVED IN THE EXCAVATION	17
4	ANALYTICAL RESULTS.....	18
4.1	PALEOZOOLOGICAL AND PALEOBOTANICAL REMAINS.....	18
4.2	IDENTIFYING PERIOD AND CHRONOLOGY	19
5	6. DISCUSSION.....	19
5.1	INTERPRETATION OF THE OUTCOMES OF ARCHAEOLOGICAL EXCAVATIONS	19
6	INVENTORY	20
7	APPENDICES	54
7.1	REFERENCES.....	54
7.2	ILLUSTRATIONS	55
7.3	PHOTOS	57

2 INTRODUCTION

2.1 SITE DISCOVERY

The Amirarx settlement, located in KP 182.500 of the SCPX route, was recorded during the first and second stages. Since the monument area is being used for sowing work, and does not differ from the surrounding areas in terms of its relief, it is difficult to identify a settlement there visually. Only numerous ceramic and stone-made items discovered above the ground showed that an archaeological area was located on the site. Therefore, the Amirarx settlement was initially registered and listed among the monuments in the SCPX corridor where archaeological excavations would be carried out in compliance with the agreement reached by the IoAE and BP (SCPX).

2.2 BRIEF DESCRIPTION OF THE SITE

The Amirarx settlement is located in Aghdash district at the N-4492909.477; N-4492941.939; E-8701230.675; E-8701148.818 coordinates in KP 182.500 of the SCPX route, about 550-600m away from the Amirarx village of the same district on the left-hand side of the Baku-Gazakh highway. The settlement is surrounded by sowing areas from all sides. The area has plain relief.

2.3 TIMING OF THE EXCAVATIONS

An archaeological expedition group of the ANSA IoAE carried out archaeological excavations in the Amirarx settlement on September 10-October 17, 2015, overseen by PhD in History, senior research fellow Vagif Asadov, with the participation of the Institute's employees, PhD in History, senior research fellow Dmitry Kirichenko and junior research associate Ahliman Abdurahmanov. SCPX Cultural Heritage Site Construction Manager Mahammad Novruzov and the BP (SCPX) representative on environmental issues contributed to the excavation work as observers

3 OUTCOME OF EXCAVATIONS

3.1 GENERAL DESCRIPTION OF THE SITE

The Amirarx settlement is located in a plain area. The monument is located at the N-4492909.477; N-4492941.939; E-8701230.675; E-8701148.818 coordinates. The settlement has a general title and in terms of administrative division is part of the Amirarx village of the Aghdash district. The settlement is situated about 550-600m from the Amirarx village, on the left-hand side of the Baku-Gazakh highway in KP 182.500 of the SCPX route. This plain territory has been used for sowing for many years.

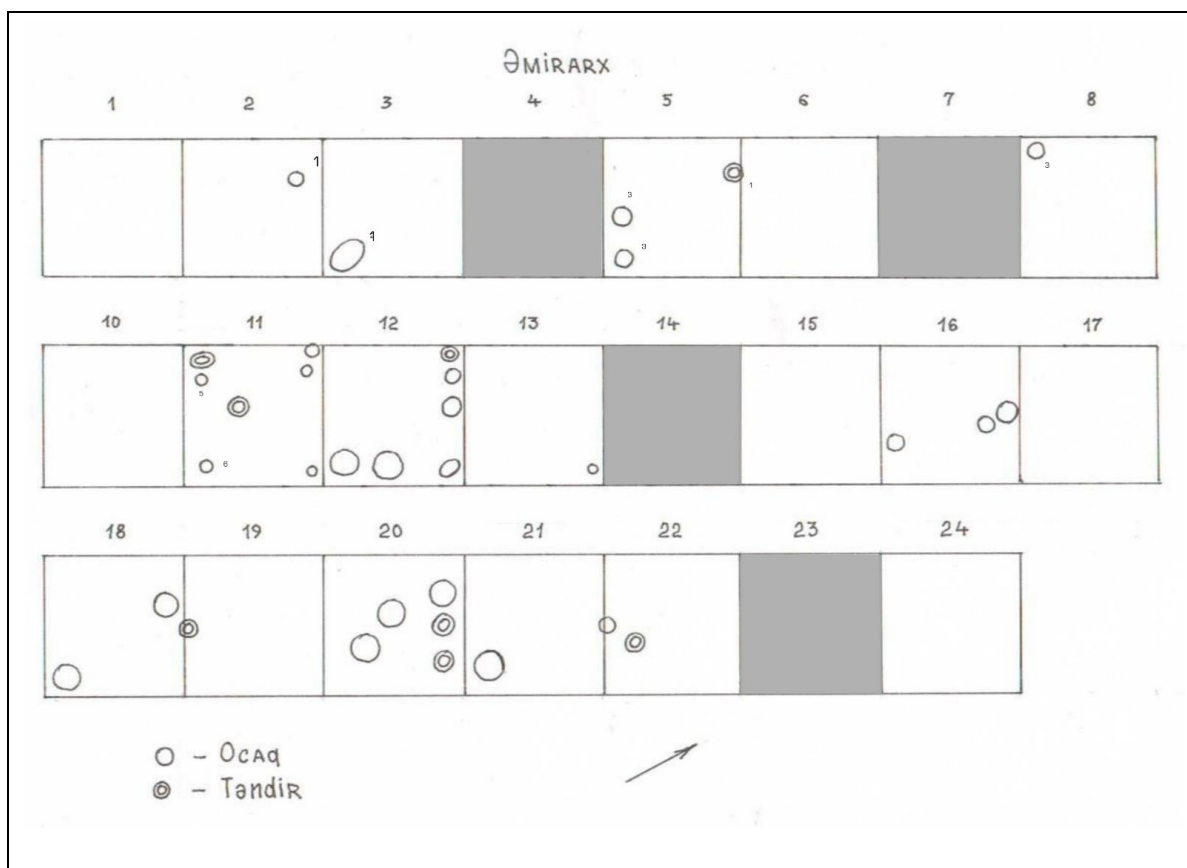


Fig. 2. Schematic plan of archaeological excavation area (no excavations conducted in shaded units).

While walking around the settlement and the surrounding territories it is possible to see numerous ceramics above ground. The tangible cultural remains discovered in the mentioned areas are mainly significant in terms of the archaeological evaluation of those areas. However, overall, the samples found in those areas resemble the typical ceramics found in the Hajjalili settlement territory. Thus, the Hajjalili territory is considered a common archaeological zone in general. The discovery of numerous ceramic samples of a wide variety dating back to the past centuries in this territory allows making a conclusion that life was burgeoning in these areas during that period.

The location of the settlement is very conducive for a habitat. Suitable soil reserves and sources of water for farming are available around the settlement. Perhaps, animal husbandry played a bigger role in the farming activities of the local residents. However, the available artefacts prove that there had been very suitable conditions for sowing there as well.



Photo 3. General view of archaeological excavation area .

4.2. GENERAL DESCRIPTION OF OCCUPATION LAYERS

Archaeological excavations in the territory began with the selection of the excavation area. The chosen territory was located in the new pipeline corridor 280 metres south of the BTC and SCP pipeline corridor. The length of the excavation area was 68 metres and 4 metres wide. A total of 24 units sized 4x4m were laid out. The units were numbered in the south-east-north-west direction, i.e. in the direction of the pipeline with excavations planned in the shape of chess board (Photo 2). Initially, the upper suitable layer of the soil that is 20cm thick was scraped and taken off and piled outside the excavation area. Though sowing work had been carried out there for many years, numerous ceramic samples were encountered on the surface and the initial 20cm of soil removed, which indicated the richness of the occupation layer in the settlement. (Photos 3, 11).

Researchers concluded during the excavations that the Amirarx settlement consists of one layer and that the thickness of the occupation layer is 100-120cm. The observations revealed that the tangible cultural remains of the 25cm-thick upper stratum of the occupation layer are not rich. Certainly, this was due to the fact that the soil's upper layer had been used for sowing for many years. The section of the occupation layer that is rich with coal, ash strata, pottery fragments, animal and bird bones starts from 30cm and continues to a depth of 1-1.2m. A great number of tandir ovens, furnace sites and household wells were recorded in the excavation.

The excavation depth of the units set up in the excavation area was as follows:

Unit 1 depth - 120cm

Unit 2 depth - 120cm

Unit 3 depth - 120cm
Unit 4 – not excavated
Unit 5 depth - 120cm
Unit 6 depth - 120cm
Unit 7 - not excavated
Unit 8 depth - 120cm
Unit 9 depth - 120cm
Unit 10 depth -120cm
Unit 11 depth - 120cm
Unit 12 depth - 120cm
Unit 13 depth - 120cm
Unit 14 - not excavated
Unit 15 depth - 120cm
Unit 16 depth - 120cm
Unit 17 depth -120cm
Unit 18 depth -120cm
Unit 19 depth - 120cm
Unit 20 depth -120cm
Unit 21 depth - 120cm
Unit 22 depth - 120cm
Unit 23 - not excavated
Unit 24 depth - 120cm

Traces of burnt clay emerged at a depth of 30cm below the surface adjacent to the east wall of Unit 5. The clay traces were seen descending throughout the wall until the depth of 70cm. The traces were found 80cm away from the north wall. Furthermore, a furnace site (1) was revealed (Photo 12) at the 70cm depth, 40cm toward the central part from the unit's east and southeast wall. There were traces of burnt clay and burning inside the furnace. Two ceramic vessel fragments and an iron knife blade were found there as well.

One of the fragments was a part of a medium size bowl-type vessel base. The base is narrow, ring-like and heeled. The vessel's body rises upward from the base after expanding sideways. The upper surface is polished. There are horizontal grooves on the surface. The clay

composition is clean. The colour is dark pink. The base diameter is 6.5cm and the wall is 0.5cm thick.

The other fragment was also a part of a bowl-type vessel. More precisely, it was a small bowl-type vessel body's fragment with a broad orifice. The orifice area transforms directly into the body. The body smoothly narrows downward. There is sand admixture in the clay composition. There is a small papilla-like protrusion on the inside. The wall is thin. The vessel is covered with white engobed coating. It is painted black on the outside and green on the inside, and glazed. The clay colour is dark pink. The wall is 0.5cm thick (Photo 13). The furnace diameter is 80cm. A tandir oven site was discovered (1) adjacent to the unit's north wall and 1.2m away from its east wall. The bottom of the tandir oven was located 70cm below the ground. A baked flat brick (two such items were found) was placed over the bottom part. A part of the tandir oven's east edge remained intact. It was 20cm high (Photo 14).

Another furnace site was recorded (2) near the unit's east and southeast wall 1m below the ground. The second furnace was located 1.2m away from the northeast wall and 1.9m away from the south wall. Its diameter was 80cm. There were traces of burnt clay and burnt soil on the inside (Photo 15).

A furnace site was discovered (3) near the west corner of **Unit 3** at the depth of 0.9cm to 1m. The furnace was located 35cm away from the unit's northwest wall and 2.1m away from the east wall. The furnace was sized 1.3x0.8m. Numerous pieces of coal, ceramic fragments and cattle bones were found inside (Photo 16).

Another furnace site (4) was found at the southeast corner of **Unit 8** 50cm below the ground. The furnace edges were encircled by a stripe of burnt clay. Coal pieces were seen on the inside. It was a furnace fragment stretching toward the unit's south wall. A line of baked bricks was revealed around the furnace after cleaning. The furnace diameter was 50cm and its depth was 15cm (Photo 17).

A small pit was cleaned adjacent to the unit's north wall, 35cm away from the northeast corner at the 50cm depth under the ground. The pit diameter was 25cm and its depth was 15cm. Presumably, the pit served as a pole (Photo 18). Burnt clay and coal traces emerged to the east of the pit. Moreover, a burnt layer was found from the depth of 60cm, 1.3m westward, throughout the unit's east wall. The layer descended until the depth of 70cm. Short and oblong pits filled with sand emerged in different parts of the unit.

Another furnace site (5) was discovered at a depth of 40cm close to the southeast wall of **Unit 12**. The furnace site was located 1m away from the unit's east corner. The furnace, which had a diameter of 60cm, was 20cm deep. Burnt clay and ceramic fragments were found inside (Photo 19).

A little tandir oven (2) was discovered at the unit's northwest corner at the depth of 60cm. The tandir oven edge's west wall was traced more clearly. The tandir oven diameter was 40cm and its height was 30cm. A lot of burnt soil emerged inside the tandir oven (Photo 20).

An oval furnace site (6) was discovered at the same depth at the unit's northeast corner. The furnace was full of burnt sand. Pottery fragments and a part of an iron item were found inside. The furnace was sized 70x50cm and its depth was 20cm (Photo 21).

One of the finds was a flat and broad handle fragment. It was part of a jar-type ceramic vessel made of well baked, light grey clay with fine sand admixture. The handle connected the orifice area with the shoulder. The upper part was depressed in the middle. The vessel's diameter was 4.5cm. The iron item was sized 10x9.5cm (Photo 22).

One more furnace (7) was found adjacent to the unit's east wall at the depth of 80cm. The furnace was located 50cm away from the unit's south corner. A burnt stripe was traced at the east wall of the unit. The furnace's diameter was 70cm and its tracked depth was 40cm (Photo 23).

A stripe of burnt clay was traced in the central part of the unit's south wall at the depth of 50cm. The 10cm thick stripe stretched 50cm westward in semi-circular shape. A trace of its edge may be seen as well.

Another furnace (8) was recorded near the unit's north and northeast wall at the depth of 1m. This item emerged to the west and 40cm below Furnace 6, located at the northeast corner of the unit. The large furnace's diameter was 1.2m.

A furnace site (9a) also emerged at the same depth 30cm north of the unit's southeast corner adjacent to the east wall. Burnt soil and vessel fragments were found inside the furnace. The furnace's diameter was 1m (Photo 24).

Another tandir oven (3) was discovered adjacent to the centre of the unit's south wall at a depth of 1.2m. A part of the tandir oven stretched toward the unit's wall. The tandir oven was located 1.5m away from the unit's east corner and 1.9m away from the west corner. The tandir oven diameter was 60cm (Photo 25).

Another furnace site (9b) emerged adjacent to the west wall of **Unit 16** at the 65cm depth. The furnace was located 1m away from the unit's south corner. The diameter was 50cm (Photo 26). One more furnace was recorded at the same depth near the west wall of the unit (10). The furnace was located 2.45m south of the unit's north wall. Its diameter was 60cm (Photo 27). One more furnace was discovered at the same depth adjacent to the unit's south wall (11). Half of this furnace was inclined toward the wall inward. The furnace was located 1m away from the unit's southeast corner and 1.6m away from the southwest corner. The diameter was 70cm (Photo 28).

A furnace site (12) was discovered 65cm deep in the south part of **Unit 18**. The furnace was located 2.3m away from the unit's south wall and 1.3m away from the west wall (Photo 29).

Another furnace site (13) was registered near the unit's north wall at the 95cm depth. It was located 1.1m away from the unit's east wall and 20cm away from the north wall.

Traces of burnt clay were seen close to the furnace by the unit's north wall. The furnace's diameter was 80cm and its depth of 15cm. An ash layer emerged inside (Photo 30).

A trace of the lower part of a tandir oven edge emerged at the 50cm depth slightly to the north in the middle of **Unit 20** (4). The tandir oven, which was located 1.4m away from the unit's west wall, 2m away from the east wall and 1.15m away from the north wall, had a diameter of 80cm.

Semi-circular burnt clay traces emerged near the northeast corner of the unit's north wall at 80cm depth. This could have been a trace of a furnace or tandir oven. A burnt layer was traced again at the same depth. The 10cm thick layer, which was found at the unit's east wall, stretched over a distance of 80cm from the north southward.

Another furnace (14) was discovered adjacent to the unit's east wall at the 60cm depth in **Unit 22**. The furnace, which was located 1.1m from the unit's south wall and 2.4m away from the north wall, had a diameter of 40cm (Photo 31).

A small tandir oven (5) was discovered at the 90cm depth by the unit's east wall. The tandir oven was located 1.6m away from the south wall, 1.9m away from the north wall and 90cm away from the east wall. Its diameter was 60cm and the depth was 30cm (Photo 32).

Another tandir oven (6) emerged at the 80cm depth in **Unit 20**. Only the lower part of the item remained intact. One of the sides collapsed. The tandir oven, which was found in the northeast part of the unit, was located 80cm away from the unit's west wall and 20cm away from the north wall and had a diameter of 80cm (Photo 33). The tandir oven edges were formed of clay and baked bricks. Burnt soil, burnt timber and coal splinters emerged on the inside.

Another tandir oven (7) was found near the unit's east wall at the depth of 90cm. The tandir oven edge (burnt clay) collapsed, covering up the bottom. The tandir oven was located 1.4m away from the unit's north wall, 2.2m away from the south wall and 25cm away from the east wall. The diameter was 65cm (Photo 34). A layer of ash and a ceramic vessel fragment emerged inside the tandir oven. It was a part of the orifice element of a vessel similar to a little boiler with a wide orifice (inv 421). The orifice area had welt on the side. The low and broad neck gradually transformed into the shoulder. There was a small triangular protrusion under the orifice. The wall was thin. There is sand admixture in the clay composition. The colour is dark pink. Traces of soot remained on the surface. The orifice diameter was 15.5cm and the wall was 0.3cm thick (Photo 35).

A furnace (15) was recorded at 35cm depth in the northeast part of the north wall of **Unit 2**. The furnace was located adjacent to the wall, 1.65m away from the unit's west wall and 1.15m away from the east wall. The diameter was 50cm (Photo 36).

A deep tandir oven (8) was found at the 40cm depth essentially in the middle of **Unit 11**, relatively close to the northwest wall. The tandir oven was located 1.1m away from the northwest part of the unit's west wall, 2m away from the southeast part and 1.5m away from the north wall. The diameter was 40cm and a 10cm hollow was seen inside after the 40cm depth was reached (Photo 37). An ash layer, a piece of a baked brick and ceramic fragments emerged inside the tandir oven.

One more furnace (16) emerged at the same depth near the unit's north and east walls. Ash and burnt soil were removed from this furnace, which was rather shallow. The furnace was located 1.15m away from the unit's northeast corner. The diameter was 60cm and the depth was 10cm (Photo 38). A round-shaped burnt clay spot was found adjacent to the wall in the furnace's northeast part. The spot had a diameter of 50cm.

A furnace site (17) was recorded at the 60cm depth close to the southeast part of the unit's east wall. The furnace was located 55cm away from the unit's east wall and 55cm away from the south wall. The furnace diameter was 35cm and the depth was 25cm (Photo 39). Burnt soil and clay were scattered in the surrounding area. An ash layer, iron sediment and glazed vessel fragments were found inside the furnace.

Patterns comprised of vegetational ornaments were applied inward with black shades over the blue colour on the inside and outside upon one of the finds. It is a plate fragment covered on top with a layer of glazing. The vessel was made of well baked, light red clay with sand admixture. The wall is 0.7cm thick (Photos 40-41). The second fragment was also part of a plate-type vessel. The vessel was decorated by white stripes on the inside and outside and then on the inside by those with blue, dark green shades, arch-shaped patterns, and further glazed. The plate's orifice area opens widely sideways. It was made of well baked, light coffee-coloured clay with clean composition (Photo 42).

The third find is a bowl fragment of a plain shape inside, painted green and covered on top with a layer of transparent enamel. The body is biconic. It was made of well baked, red clay with clean composition. The base is heeled. Traces of a potter's wheel are clearly seen on the inside. The orifice area is covered on the outside with white engobed coating. The base diameter is 6.2cm, the heel is 5cm high and the wall is 0.5cm thick (Photo 43).

Another tandir oven (9) emerged at the same depth near the southwest corner of the unit's west wall. The oval-shaped tandir oven was located 30cm away at the southwest corner adjacent to the west wall (Photo 44).

Traces of well remained on the edges. Ash, burnt soil and ceramic fragments emerged on the inside. These were glazed plate fragments. Dark brown, criss-cross and concentric lines were drawn over light brown paint inside one of these fragments. This plate was further covered with enamel. The thick walled item was made of well baked, red clay with clean composition.

The second find is a fragment of a glazed ceramic vessel. White striped patterns were applied on the inside and outside, along with those applied in blue and green paint over the white ones on the outside. The thick walled item was made of well baked, red clay with fine sand admixture (Photo 45).

Another sample is a ceramic plate fragment with a glazed surface and vegetational ornaments. The ornaments were drawn with scratched patterns on the inside over the green coloured ones. The thick walled item was made of well baked, red clay with clean composition. It is relatively heeled (Photo 46). The tandir oven is sized 75x60cm and the depth of its undamaged section was 20cm.

A layer of burnt clay was found at this depth adjacent to the unit's north wall. A tandir oven (10) also emerged next to it on the west side.

Burnt soil and ash, baked bricks, animal bones, as well as a pitcher orifice fragment, emerged while the tandir oven was being cleaned inside.

A layer of clay was found 1.4m away from the unit's east wall, while the tandir oven was located 1.5m away from the west wall. The tandir oven diameter was 50cm and the depth was 45cm (Photo 47).

Another small furnace (18) was discovered near the unit's northeast corner, along with one more tandir oven (11) 60cm south-west of it. The furnace was located adjacent to the east wall, 15cm south of the northeast corner. The diameter was 30cm and the depth was 15cm. The tandir oven's edges were formed of clay. The clay burned down under the impact of heat. The item was located 50cm south of the unit's north wall. The diameter was 75cm and the depth of the undamaged section was 20cm (Photo 48).

Two more furnaces (19 and 20) located adjacently emerged in the middle of the unit at the depth of 65cm. Though the furnaces had small diameters, they were full of burnt soil, animal bones and ceramic fragments. The furnaces were situated in the north-west-south-east direction, 1.3m away from the unit's southwest wall, 1.5m away from the southeast wall, 1.4m from the northwest wall and 2.3m from the northeast wall. The total area of the furnaces was 90x80cm. Furnace 19 had a diameter of 30cm and was 16cm deep, while the diameter of Furnace 20 was 40cm and its depth 10cm (Photo 49).

Another furnace site (№ 21) emerged at the depth of 75cm in the northwest corner of the unit. The area around the furnace, which had a small diameter, was covered by burnt clay and a

layer of ash. The furnace diameter was 30cm and its depth was 5cm (Photo 50). A large pitcher base (Photo 51) was encountered in the unit's area.

A furnace (22) was recorded at the 1m depth near the north wall of **Unit 13**. The furnace was located 65cm away from the unit's north wall and 1.4m away from the east wall. Its diameter was 80cm.

A second furnace (23) was discovered south-west of it. The furnace was located 60cm away from the west wall and 2.2m away from the east wall. Its diameter was 30cm.

In addition to an ash layer, glazed vessel fragments and an iron wire were found inside.

A tandir oven (12) was discovered at the 1m depth adjacent to the east wall of **Unit 19**. The tandir oven was located 1.3m away from the north wall and 2.7m away from the south wall. The diameter was 50cm (Photo 52). A layer of ash emerged on the inside. The depth of the undamaged section was 20-45cm.

A burnt clay spot emerged by the west wall of **Unit 21** at the depth of 80cm. Presumably, this was the bottom of a furnace site (24). The mentioned spot was located 1m away from the southwest part of the south wall and 40cm away from the west wall. The furnace diameter was 60cm (Photo 53).

3.2 Tandir ovens:

A total of 13 tandir ovens were excavated in the Amirarx settlement during the SCPX excavations. These tandir ovens were numbered in sequence. They were planned in an irregular shape with conic cross sections broadening downward (Photo 54). The tandir ovens were full of soft soil mixed with ceramic pieces, animal and bird bones. The tandir ovens found during implementation of the SCPX project were the same as the previously made discoveries in terms of their shape and content, given that all of these tangible cultural remains are attributed to the same habitat.

Tandir oven 1. The tandir oven was discovered adjacent to the north wall of Unit 5, 1.2m away from the east wall. The tandir oven's bottom was located 70cm below the ground. A baked, flat brick (a second such item was found) was placed in the bottom. A part of the tandir oven's east edge remained intact. The height was 20cm (Photo 14).

Tandir oven 2. The tandir oven was discovered at the 60cm depth at the northwest corner of Unit 12. The tandir oven edge's west wall was seen more clearly. The tandir oven diameter was 40cm and the height was 30cm. A lot of burnt soil emerged inside the tandir oven (Photo 20).

Tandir oven 3. The tandir oven was discovered adjacent to the centre of the unit's south wall at the depth of 1.2m. A part of the tandir oven stretched toward the unit's wall. The tandir oven was located 1.5m away from the unit's east corner and 1.9m away from the west corner. Its diameter was 60cm (Photo 25).

Tandir oven 4. A trace of the bottom of a tandir oven edge emerged at the 50cm depth in the middle of Unit 20 slightly northward. The tandir oven was located 1.4m away from the west wall, 2m away from the east wall and 1.15m from the north wall. Its diameter was 80cm.

Tandir oven 5. The tandir oven was discovered at the 90cm depth in the east part of Unit 22. The tandir oven was located 1.6m from the unit's south wall, 1.9m from the north wall and 90cm from the east wall. The diameter was 60cm and the depth was 30cm (Photo 32).

Tandir oven 6. The tandir oven emerged at the 80cm depth in Unit 20. Only the lower part of the item remained intact and one of the sides collapsed. It was located in the northeast part of the unit 80cm away from the west wall and 20cm from the north wall. The tandir oven diameter was 80cm (Photo 33). The tandir oven's edges were formed of clay and baked bricks. Slightly burnt soil, burnt timber and coal pieces emerged on the inside.

Tandir oven 7. The tandir oven was discovered at the 90cm depth by the unit's east wall. Its edge (burnt clay) collapsed, covering up the bottom. The tandir oven was situated 1.4m away from the unit's north wall, 2.2m away from the south wall and 25cm from the east wall. The diameter was 65cm (Photo 34). An ash layer and a ceramic vessel fragment were found inside the tandir oven. This was a part of the wide orifice element of a vessel similar to a small boiler.

Tandir oven 8. The tandir oven was discovered at the depth of 40cm essentially in the middle of Unit 11. It was slightly close to the unit's northwest wall. The tandir oven was located 1.1m away from the northwest part of the unit's west wall, 2m from the southeast side and 1.5m from the north wall. The diameter was 40cm. There was a 10cm hollow inside after the depth of 40cm (Photo 37). An ash layer, a piece of a baked brick and ceramic fragments were found inside the tandir oven.

Tandir oven 9. Another tandir oven emerged at the 60cm depth near the southwest corner of the west wall of Unit 11. The oval tandir oven was located adjacent to the west wall, 30cm away in the southwest corner (Photo 44). Traces of a brink remained over the edges. Ash, slightly burnt soil and ceramic fragments were found inside. These were fragments of a glazed plate.

Tandir oven 10. A burnt layer of clay emerged at the 60cm depth adjacent to the north wall of Unit 11. A tandir oven was also found next to it from the west side (10). Burnt soil and ash, baked bricks, as well as animal bones and a pitcher orifice fragment, were found when the tandir oven was being cleaned inside. The clay stratum was located 1.4m away from the unit's east wall, while the tandir oven was located 1.5m away from the west wall. The tandir oven's diameter was 50cm and its depth was 45cm (Photo 47).

Tandir oven 11. The tandir oven was discovered by the northeast corner of Unit 11 at the depth of 60cm. Its edges were formed of clay. The clay burned down under heat. The tandir oven was located 50cm south of the unit's north wall. The diameter was 75cm and the depth of its undamaged section was 20cm (Photo 48).

Tandir oven 12. The tandir oven was discovered adjacent to the east wall of Unit 19 at the depth of 1m. The tandir oven was located 1.3m away from the unit's north wall and 2.7m away from the south wall. The diameter was 50cm (Photo 52). An ash layer was found inside. The depth of its undamaged section was 20-45cm.

As mentioned above, a great number of furnaces were discovered in the archaeological area during the excavations. Up to 24 such items were revealed. The furnaces, which were round and oval shaped, had different diameters and depths. Burnt soil, ash layers, some ceramic fragments, parts of iron items and osteological remains emerged inside the furnaces.

4.3. ARCHAEOLOGICAL FINDS

3.3 Ceramic:

The ceramic items discovered in the excavation area are basically the same as the Fakhrli and Dashbulag materials in terms of their shape and content. These samples can be traced back to the 13th-15th centuries based on their typological features. Much more enamelled pottery was found than unglazed fragments.

Ceramic vessel fragments play a special role among hundreds of tangible cultural samples recorded during the excavations. Artefacts, which include fragments of such clay vessels as plates, kheyra, trays, vases, jugs, dopu, pitchers, lamps, lids, etc. are an indicator of the kitchen-related and domestic culture of the local residents in a relevant time period. Most of the samples were made very skilfully and in line with high quality requirements. Glazed fragments of vase, plate and bowl-type vessels are particularly remarkable among these items. These glazed vessels, decorated on the surface with vegetational and geometric patterns using multi-coloured paint, indicate a good artistic taste of the craftsmen who applied those colours.

The enamelled vessel samples found in the Amirarx settlement are not only plentiful but also very diverse in terms of applied patterns. It is worth mentioning that whole vessels and half-parts of vessels were also encountered during the excavations, though the number of such finds was small.

Enamelled and unglazed pottery was also encountered among the materials found above the ground and these discoveries included mainly the orifice elements, shoulders, bases and bodies of clay vessels. Mainly vessels with well-polished surfaces and clean clay composition are available.

The samples discovered in the excavation area are of a greater variety and higher quality. These are parts of clay vessels similar to pitchers, jugs, bowls, plates, boilers, dopu, salt cellars and saucers. Lid fragments were found as well.

Pitchers were broken and only their pieces were found on the site. The discovered fragments clearly indicate that the pitchers had narrow, flat (Photos 55-56) or heeled (Photo 66, inv.173) bases, pear-like shaped or convex (Fig. 4.2; Photos 9,2) bodies, narrow or cylindrical necks and orifices that were bent sideways (Photo 57). As a rule, the body is girdled by an ornamental belt. The pitchers were mainly baked with average quality and their ceramic composition was dense. Their colour was brown, coffee-coloured or brick-red. Wavy lines mostly applied by scratching and engraving were encountered upon the mentioned ornamental belts. The orifice area of the pitchers is usually decorated by slightly protruding embossed patterns.

One of the pitchers obtained in their entirety is a small item with an orifice area opening sideways. The low neck smoothly goes into the shoulder. The body is convex. The shoulder is encircled by two parallel scratched lines that are 2.5cm apart. The body narrows downward. The base is wide and flat. The wall is thin. The clay composition is clean. The colour is pink. The surface was polished and painted red. The height of the undamaged section is 13.5cm, while the body diameter is 13cm, the base diameter is 5cm and the wall is 0.4cm thick (Photo 59).

Another fragment is a half-part of a small pitcher with a spheric body. Its shoulder is sharply bent inward. The orifice is broken. The surface is girdled by five rows of stripes comprised of rhombic patterns with protuberant dots inside. The stripes were applied using the stamping method. The bottom of the vessel body is girdled by a grooved stripe underneath. The base is narrow, ring-like and heeled. The wall is thin. The clay composition is clean and the colour

is whitish. The height of the undamaged section is 10cm, the base diameter is 8.5cm and the wall is 0.4cm thick (Photo 66, inv.173).

The discovered large **household jugs** had elongated bodies (Photos 60-62), while their orifice elements were round (Photo 63) and bent sideways. The low and wide necks smoothly transform into the shoulders. The jugs usually have thick walls. Their bases are wide and flat (Photo 64). As a rule, their body is girdled by a protruding chain-like stripe (Photo 58).

There are also pieces decorated with spike-like uneven patterns, with a model belt girdling the body, among the small pitcher fragments. Moreover, several samples are the upper parts of little pitchers.

One of the **dopu** samples tracked during the excavations was found in its entirety. The dopu's round orifice is relatively wide. The low neck transforms into the spheric body. The base is flat. There is sand admixture in the clay composition. The colour is pink. The surface was smoothened. The orifice diameter is 8.5cm, while the body diameter is 14cm, the neck is 2cm high, the base diameter is 8cm and the height is 9.5cm (Fig. 5.2; Photo 65).

Bowls had wide orifices transforming directly into the body. Sometimes the orifice area was inclined inward. The body broadens upward from the bases, rising upright, and are sometimes rounded.

Biconic bowl fragments were encountered as well. Their bases are heeled or flat. As a rule, vegetational images were painted with glazing on the inside and sometimes on the outer surface as well. The following sample could be cited as an example of such bowls. These are fragments of a bowl-type vessel. The low neck is bent sideways, but the orifice is slightly inclined inward. The orifice area is smooth. The base is narrow, ring-like and heeled. The body rises after expanding sideways from the base. It is painted white on the inside and on the upper part of the outer surface. Patterns were applied to the upper side and it was further glazed. The bottom of the orifice area is girdled by a thin stripe. The body is encircled underneath by two thin, green parallel stripes. The part between the stripes is decorated by vertically interchanging green and blue patterns resembling plane trees. Another green stripe girdles the vessel's lower part underneath in parallel to the thin stripe. The remaining part under the stripe is covered with whitish engobed coating. There is sand admixture in the clay composition. The clay colour is light pink. The wall becomes thinner as it rises upward. The base diameter is 10cm, while the neck is 4cm high and the wall is 0.5-1cm thick (Photos 5,1; 67).

The bodies of the discovered **vases** expand to the sides from the base. The bases are ring-like and heeled. They are decorated on the inside with painted patterns and glazed (Fig. 4.1, 6; Photos 71-79).

One of the obtained fragments is a vase-type vessel's base. The latter is narrow, ring-like and heeled. Its body expands sideways. The sides look as if they had been broken on purpose. The vessel was painted white inside on top of grey engobed coating. Furthermore, patterns were applied to the vessel and it was glazed. The body is girdled on the edges by two black stripes. A green circle was drawn in the centre of the body. Round-shaped, black vegetational patterns were applied in the middle. Green, bud-shaped ornaments were placed amidst the patterns. There is sand admixture in the clay composition. The colour is light pink. The wall is thin. White engobed coating was applied around the base in the lower part. The body diameter is 18cm, while the base diameter is 9.3cm and the wall is 0.4cm thick (Photo 68).

Another interesting fragment is a vase-type vessel's base. The base is narrow, ring-like and heeled. The body opens sideways. The clay composition is clean. The vessel was painted light

green on the inside. A black flower image was drawn in the central part. The central part was encircled by two black, parallel lines and then glazed. White engobed coating was applied under the coloured section. The clay colour is reddish-brown. The bottom was polished. The base diameter is 6.5cm, while the wall is 0.5-1cm thick (Photo 69).

Another vase base is also narrow, ring-like and heeled. The body broadens sideways from the base. The clay composition is clean. The internal part of the vessel was covered with light grey engobed coating and then painted in whitish colour. Furthermore, decorative, black vegetational images were applied. An image drawn in the vessel's central part in the middle of this composition resembles a dragonfly. Slanting light blue wings stretch in four directions from the central part of that image. The clay colour is red. The base diameter is 8.5cm and the wall is 0.6cm thick (Fig. 4.1; Photo 70).

The orifices of **plates** and **kheyra** are shallow and bent sideways (Photo 86, inv.201). The orifice area is flat or has welt. The vessels have slanting sides. Some of the orifices are encircled by depressed dots. A sample with an orifice girdled on both sides by a fissure was found as well. The plates and kheyra were decorated on the inside with vegetational and geometric patterns and glazed (Fig. 7.2; Photo 80).

Boiler parts were also among the discovered vessel fragments. The boilers have thick walls and their orifices are bent sideways. The orifice area has welt. The bodies are either convex or narrow downward. The boilers have semi-circular, hook-like or quadrangular handles. One of the boiler fragments is a medium size vessel's handle. The hook-shaped handle has a wide and tape-shaped cross section. There is a protruding stripe along the middle of the handle. The vessel's neck was broad and low, inclined inward. The handle connects the shoulder with the body's middle section. There is significant sand admixture in the clay composition. The wall becomes thinner on the way down. The clay colour is grey and the surface is pink. The handle cross section diameter is 3cm, while the diameter is 4cm, the neck is 1.3cm high and the vessel's wall thickness is 0.4-0.8cm (Fig. 8.1; Photo 81).

Salt cellar-type vessel fragments were frequently encountered during the excavations as well. The bodies of the salt cellars are convex or narrow downward. The necks are sometimes low and expand downward. The orifices are either thin or have welt. The orifices are bent sideways. The bases are wide, flat, ring-like and heeled or oval.

A little salt cellar-type ceramic vessel is one of such items. The orifice is broken. The body is convex. The base is wide and heeled. It is an ordinary vessel made by hand. It was made of well baked, pale green clay with clean composition (Photo 82).

The bodies of **trays** are slightly oval-shaped. The sides sometimes rise upright. The bases are wide and flat. **Dishes** are shallow, with low sides rising straight upward. The orifices open sideways. The bases are wide and flat, and sometimes oval. The bodies of **piyales** are rounded and their bases are oval. The necks of the obtained **flagon-type** vessels are long and narrow. The surfaces are sometimes corrugated.

One of the finds is the orifice of a flagon-type vessel. It has a narrow orifice with welt. The narrow neck directly transforms into the shoulder. There is a trace of a handle over the neck. The section transforming from the neck into the shoulder is girdled by a thin parallel scratched line. There is fine sand admixture in the clay composition. The colour is whitish. The wall is thin. The orifice diameter is 4.8cm on the outside and 3cm on the inside, while the neck is 5cm high and the wall is 0.4cm thick (Fig. 5.3; Photo 83).

Clay **lid** fragments were found during the excavations as well. One of these items is a part of a thick walled lid made of well baked, red clay with sand admixture. The lateral edges are bent

upward on the upper side. There is soot in the bottom. A striped pattern applied with red paint remained on the surface. The wall is 0.7cm thick (Photo 87).

A cylindrical boiler lid handle was found as well. The surface has a hollow. The lower part expands sideways. The handle is girdled by two rows of grain-like and oat-like notched patterns. There is sand admixture in the clay composition. The colour is brown. The surface diameter is 3.5cm and the diameter of the lower part is 4.5cm (Photo 75, inv.79).

One of the finds is a fragment of a handle horizontally attached to a **churn-type** ceramic vessel. It has a round cross section. An asymmetrical pattern was drawn prior to baking in the handle section attached to the upper side. It was made of well baked, red clay with sand admixture (Photo 85).

Another sample is a spout of a large **aftaba-type** vessel. The pipe-shaped vessel becomes slightly thinner toward the edge. There is fine sand admixture in the clay composition. The colour is pink. The vessel was painted red. It is positioned horizontally. The length is 8cm (Photo 86, inv.202).

Handles of **crook-type** vessels were also found. One of these was part of a vessel with a narrow orifice. The vessel's handle is thick and wide, with one of the edges connected in the back to the orifice area, while the other edge is descending with a tape-shaped cross section. There is fine sand admixture in the clay composition. There is a slight fissure along the handle in the middle section. The colour is whitish. The vessel's walls are thin. The handle cross section width is 4.4cm and thickness is 2.8cm (Photo 88).

Pail-type vessels have high cylindrical necks. Their orifice area has welt. There are handles over the necks of some of these vessels (Fig. 7.1; Photo 88)

Jug fragments were also discovered in the excavation area. Their orifice area is round and the necks are narrow. There are usually wide, tape-shaped handles on their surfaces.

One of the finds is a body fragment of a pail-type ceramic vessel made of well baked, whitish clay with clean composition. Though the orifice is broken, it is apparently slightly bent sideways. The narrow neck bluntly crosses over into the body, which broadens toward the middle. There is a wide, tape-shaped handle connecting the bottom of the orifice area with the body. The bottom edge of the handle is encircled by wavy scratched lines. The high quality item was made on a potter's wheel. The wall thickness is 0.6cm (Photo 91).

Fragments of a medium sized jug-type vessel were found as well. Though the orifice is broken, it is apparently grooved. The body is rather spheric. The slightly broadening orifice is bent sideways. The narrow neck is slightly corrugated and directly goes into the body. There is a narrow handle with an oval cross section in the back that connects the orifice with the body. The handle goes down at a slant, having separated from the orifice horizontally. The middle section of the neck was decorated with short, notched lines. The lower part of the shoulder is encircled by a thin, scratchy line. There is fine sand admixture in the clay composition. The colour is whitish. The surface is polished. The wall is thin. The base is wide and flat. The orifice diameter is 6.5cm, while the neck is 5cm high, the handle is 2cm wide, the wall is 0.5cm thick and the base diameter is 8.5cm (Fig. 8.2; Photo 92).

There were **lamps** among the discovered clay items as well. Their bodies were spheric and their necks were narrow and rather pipe-shaped. There were handles in the back and spouts in front.

One of the obtained lamps found in its entirety was spheric and depressed from the top. Its narrow neck is pipe-shaped, rising upright. The spout, attached in front, is straight and horizontal. The edge of the spout, which had a round cross section, was partly torn off but had an oval crack. It was used to install a fuse. The lamp's bottom is torn off. There is a trace of a handle in the back. The base is narrow and flat. The lamp is decorated on both sides by elongated, askew, notched patterns.

More askew notched lines completely encircle the vessel's lower part under the handle, extending along both sides of the handle. The patterns in the upper part are inclined from left to right, while the ones underneath are slanted in the opposite direction, i.e. right to left. The clay composition is clean. The colour is red. The surface was smoothened. There are traces of burning at the spout edge. Three curved grooves extend from the spout base toward the edge. The vessel shoulder is girdled by a grooved stripe in the lower part of the neck. The body diameter is 9cm, while the height of the undamaged section is 9.5cm, the base diameter is 5.2cm and the spout length is 8.5cm (Fig. 9.1; Photo 90).

Earthenware was found among the glazed vessel fragments as well. One of these samples is a small vase or bowl-type vessel's base. The base is narrow, ring-like and heeled. The body opens sideways from the base. There is fine sand admixture in the clay composition. Blue vegetational images were applied against the white background on the inside and the inner part was smoothened. The clay colour is light creamy. The bottom was covered with whitish engobed coating. The wall thickness is 0.6cm (Photo 93).

Baked bricks placed around furnaces were found in some parts of the excavation area (Photo 100, inv.362).

3.4 Metal items:

A lot of iron items were discovered during the archaeological excavations. Mostly fragments of these samples were found. The corroded iron item discovered at the Furnace 1 in the excavation area, which was 9cm long and 1.5-2.5cm wide, and narrowed toward the tip, resembled a knife blade. For instance, the mentioned samples included wide, elongated iron items' parts with awl-shaped edges (four samples); a part of a triangular, flat item made of an iron sheet; a piece of a slightly triangular shaped iron sample; a part of a pointed item made of an iron board, which was flat on both sides and narrowed toward the tip; the upper part of a big nail made of an iron roller that narrowed toward the tip (the length of the undamaged section is 5cm; the nail head diameter is 2cm (Photo 94, inv. 263), etc. Moreover, the flat and elongated iron sword blade parts (width-5cm) (Photo 95), an iron hook (Photo 96) and a loop made of a twisted copper wire (Photo 97) were also among the interesting metal finds recorded during the excavations.

3.5 DESCRIPTIONS OF ARTEFACTS OF SPECIFIC AND SPECIAL IMPORTANCE

Some of the artefacts discovered during the archaeological excavations are of special importance. These artefacts are made of clay, stone and bone materials. Their descriptions are indicated below in the list of tangible cultural remains. Enumerating them separately would be unnecessary to avoid repetition. In general, we would like to note that clay vessels, including boilers, plates, kheyra, dishes, crocks, pitchers, household jugs, lids, lamps, as well as parts of iron items, a sword blade, a copper loop and stone tools, are of special importance.

3.6 GENERAL ANALYSIS OF RESULTS ACHIEVED IN THE EXCAVATION

Overall, the archaeological excavations carried out in the settlement were very successful. Very valuable information concerning different areas of the household activities and craftsmanship of the residents of this mediaeval rural settlement was collected during the excavations.

Amirarx was a settlement of an agricultural type. In other words, the local population was engaged in sowing in addition to animal husbandry. The discovery of numerous household wells and tandir ovens along with osteological remains of cattle as well as sheep and goats during the archaeological excavations proves that farming was very advanced in the area in addition to livestock breeding.

The edges in some of the tandir ovens discovered in the Amirarx settlement were plastered on the inside in a way that makes their inter-connection evident. The plastering collapsed in some of them altogether. Along with the walls, the flooring of the tandir ovens was plastered. Clay with chaff or grass admixture or mud was used as plastering material. The walls and flooring of most of those tandir ovens, plastered with clay material that had a clean composition, have been preserved to date.

Evidently, both huge and small tandir ovens were found at the mediaeval settlement. Such tandir ovens have also been encountered at the Icherisheher in Baku and Kharabasheher in Nakhchivan [9, p. 51-84; 8, p. 368-373]. It is noteworthy that such traditional tandir ovens are inherent to the Amirarx territory, as well as the Central Aran zone. The tandir ovens are the primary tangible proof of the highly developed bread-baking tradition that was part of the household and domestic life of the rural Amirarx residents in the Middle Ages.

Tandir ovens were mostly encountered in groups during the archaeological excavations (Photo 46) and this is not a mere coincidence. Since tandir ovens were considered sacred, demolishing or damaging them was inappropriate. Therefore, new tandir ovens were set up in the vicinity of the ones that were becoming un-operational. The hammering, wind and brick types of tandir ovens are known. The tandir ovens' walls were formed on the outside of a layer comprised of baked bricks, pottery fragments and coal pieces that was up to 20cm thick and plastering was applied over it using mud.

A layer of coal turned into dust was recorded at one of the tandir ovens researched in Icherisheher between the tandir oven's wall and the protective stratum. The walls of some of the tandir ovens were decorated with an ornament on the inside comprised of scratchy lines, dots or lined-up hollows. It is known that tandir ovens of this type are available in Icherisheher [9], as well as such mediaeval rural residential areas as Dashbulag [8, p. 368-373], Bitdili [10] and Salmanbulaghi [6].

Perhaps, the fact that a neighbourhood of craftsmen and bread-bakers was discovered during the archaeological excavations carried out in the selected areas in Amirarx generally indicates that it was an agricultural settlement. The facts established as a result of ethnographic observations and the archaeological excavations lead to a conclusion that the Amirarx population possessed a peculiar sowing culture in the Middle Ages.

The great number of household wells and tandir ovens found as a result of the excavations also allows making certain conclusions concerning the number of the rural population.

4 ANALYTICAL RESULTS

It is noteworthy that the archaeological excavations at the Amirarx settlement were successfully completed and a significant part of the settlement area was excavated in stages, if the excavation work conducted previously in the BTC and SCP corridors is taken into consideration. In addition to creating a very comprehensive database regarding the nature, peculiarities, type and time period pertaining to the settlement, the obtained artefacts provide sufficient data about the economic life and activities of the residents of this medieval rural settlement.

The ceramic samples dating back to the advanced Middle Ages scattered in the area of the monument cover about 1-2 hectares. Most of the materials available above the ground in the pipeline corridor are concentrated in an area spanning over 100m. The peculiarities of the monument's topography and the materials on the surface are grounds to determine the nature of the mediaeval settlement. The excavation area presumably encompassed the territory of the settlement designed for economic purposes, given that the walls of residential buildings or foundation sites were not found in the area where the excavations were carried out. Despite the abundance of materials above the ground north-east and east of the corridor, they are very sparse to the west and south of it. The determination of the chronological range of the archaeological complexes discovered at the Amirarx settlement was based on the typological and comparative analysis methods and respective scientific conclusions were made.

4.1 PALEOZOOLOGICAL AND PALEOBOTANICAL REMAINS.

Animal bones were the only paleozoological remains encountered during the archaeological excavations carried out in the Amirarx settlement. The most common items among the paleozoological remains obtained in the excavation area were bones of cattle and then sheep and goats.

Archaeological research shows that the raising of cattle developed in the Central Aran region as early as during the advanced Middle Ages, taking the lead in animal breeding. The research of the region's rural settlements indicates that cattle breeding took the lead in animal husbandry in the 13th-15th centuries. This is due to the availability of rich pastures and hayfields.

Horned cattle was also used as harnessing power. Undoubtedly, cattle played a certain role in the development of wheeled transport. Two-wheel wagons hauled by bulls had been used until the latest periods in Azerbaijan.

The research of the animal bones found in Amirarx shows that sheep and goats had a special place in the raising of small-horned animals. Some of their parts, such as skulls, ribs, backbones and thigh bones were discovered.

Two to three deer horn fragments and a wild pig's (boar's) dental bones were also found in the settlement area. These finds provide some information concerning the region's wildlife and the population's hunting activities in that period.

4.2 IDENTIFYING PERIOD AND CHRONOLOGY

The determination of the chronological range of the mediaeval Amirarx settlement is based on stratigraphical observations and the comparative analysis of the obtained tangible cultural samples.

Amirarx was a mediaeval rural settlement and it has retained samples reflecting high cultural and economic development. Though the settlement has only one occupation layer, the available facts prove that habitation continued in this area for several centuries. Comparative analysis allows a conclusion that habitation in Amirarx started at the end of the 13th century and continued until the 15th century. Further research may indicate changes in this chronological range.

Features of highly developed Ganja craftsmanship are traced in the tangible cultural samples discovered in the settlement. Undoubtedly, some of the tangible cultural samples found during the excavations and made very delicately were not produced locally and were delivered from Ganja and other nearby developed cities through an exchange of goods. Most likely, a decline in the economic life and craftsmanship occurred in the early 16th century in the mediaeval Amirarx rural settlement, which was highly developed economically, culturally and in terms of trade ties.

5 6. DISCUSSION

When the outcomes of the archaeological excavations are summarized and the results of the work are further put on open discussion, the scientific stance and final conclusions of the report author are grouped. These scientific results have been confirmed by the observations of other research fellows involved in the archaeological excavations.

5.1 INTERPRETATION OF THE OUTCOMES OF ARCHAEOLOGICAL EXCAVATIONS

The archaeological excavations conducted on the site of a ditch to be drilled for the pipeline in the future were designated for rescue purposes. The observations upon the occupation layer slope, as well as the research conducted in the excavation areas, lead to a conclusion that the length of the settlement in the pipeline corridor exceeds 80m and the archaeological excavations were probably carried out in the central and north parts of the monument. The production remains, furnaces and tandir ovens, glazed and unglazed pottery fragments, iron items and tools, revealed on the occupation layer slope, are attributed to the 13th-15th centuries based on the typological and analytical methods. Evidently, there was a rural settlement there in the mentioned periods. The discovery of the remains of ironworking products and metal clinkers in the excavation area confirms that local residents were engaged in blacksmithing along with agriculture and that the required iron tools and domestic items were produced in the settlement.

Habitation ceased in the settlement in the aftermath of Mongol raids. Archaeological excavations to be carried out in the future in different parts of the settlement may foster comprehensive archaeological facts regarding those attacks.

6

INVENTORY

No.	Type	Description	Unit/ Depth	Dimension
1	vase base	A vase type vessel base. The base has a ring like heel. The middle of its bottom is convex. The body broadens sideways. The clay composition is clean. The surface is enamelled. The colour is light pink	Surface find	internal diameter-7.8cm wall thickness-0.5cm
2	Body	A fragment of a large ceramic vessel with an elongated body. There is a chain-like model pattern stripe on it. The wall is thick. The body descends straight down. There is sand admixture in the clay composition. The clay colour is grey. The colour of the surface and the stripe is pink.	Surface find	wall.th. 1.5cm Stripe width 3cm
3	Handle	A medium size vessel handle. It had a tape-shaped cross section, an arched shape and was connected to the vessel vertically. Its lower end surface is groove shaped. There is fine sand admixture in the clay composition. The colour is whitish. The surface is enamelled.	Surface find	Cross section – 2cm Length – 13cm
4	Vase base	A vase-type vessel base. The base has a ring like heel. The middle of its bottom is slightly convex. On the inside there are black coloured vegetational patterns with whitish and blue background colours covered with transparent glazing. The clay composition is clean.	Surface find	Base d.-7. 6cm
5	Tray body	A tray type vessel body fragment. The body is slightly oval shaped. Its side visibly rises upward. The clay composition is clean. The colour is red. On the inside it's girdled by two black parallel lines with light blue background and black coloured patterns between those, covered with enamel.	Surface find	wall thickness - 0.7cm
6	Bowl base	A bowl type vessel base. The base has a ring like heel. The middle of its bottom is convex. On the inside there is an indent in the middle. The body broadens and rounds upward. The clay composition is clean. The colour is light pink. There is whitish engobed coating on both sides of the surface. The surface is polished.	Surface find	Base diameter – 6.5cm Wall thickness – 0.5cm
7	Handle	A fragment of a wide and flat handle with a tape-shaped cross section. It was connected to the vessel vertically. Its middle is convex along the handle. There is ground seashell and sand admixture in the clay composition. The colour is grey. There is pink engobed coating on the surface.	Surface find	Cross section- 3.7cm
8	Base	A small plate type vessel base fragment. Although the base is wide and flat, some parts of it are apparently convex. Its low side rises upright. The clay composition is clean. The colour is dark pink.	Surface find	wall th. – 0.8cm
9	Tray base	A tray type vessel base fragment. The base is wide and flat. Its low side rises upright. The orifice area is round. There is fine sand admixture in the clay composition. There is blue enamel coating on its bottom. On the inside there are vegetational patterns framed by a blue straight line on a black coloured background.	Surface find	Wall thickness- 0.5cm
10	Handle	An auricle-shaped ceramic handle. It's attached to the vessel horizontally. Its bottom side is flat and the top side is slightly convex. There is gravel and sand admixture in the clay composition. The colour is brown.	Surface find	6.5x3 cm
11	Base	A vessel base fragment. The clay composition is clean. The wall is thick. There are white and turquoise coloured vegetational patterns and black colour strokes covered with enamel on the inside. The clay colour is light pink.	Unit 1 Depth: 20-40cm	Wall thickness- 1cm
12	Vase body	A vase-type vessel body fragment. The wall is thick. The body broadens sideways. Its rear side is polished. On the inside there is white engobed coating under pale green paint and it's decorated with black, straight parallel, spiral like and zigzag shaped patterns covered with enamel. The clay composition is clean. The colour is light pink. There are barely visible protruding vertical stripes in the back.	Unit 1 Depth: 20-40cm	wall thickness -0.9 cm
13	Neck	A medium size vessel neck fragment. The orifice area has welt. Its broad and low neck transforms smoothly into the shoulder. The area below the neck is girdled by a protruding facet. The wall is thin. The clay composition is clean. The colour is light pink.	Unit 1 Depth: 20-40cm	neck h.-2.8 cm wall th.- 0.4cm

No.	Type	Description	Unit/ Depth	Dimension
14	Vase or plate	A vase or plate-type vessel base fragment. The base has a ring like heel. The clay composition is clean. There is white engobed coating on the inside. The surface is ornamented with black coloured natural patterns on the blue background and covered with enamel. The colour is light pink.	Unit 3 Depth: 20-40cm	Base diam.- 5.5cm
15	Vase base	A small vase type vessel base fragment. The base has a high ring like heel. The clay composition is clean. On the inside there is white coloured engobed coating and bluish black natural patterns covered with enamel. The clay colour is light pink.	Unit 3 Depth: 20-40cm	Base diameter – 6cm
16	Vase base	A small size vase type porcelain vessel base fragment. The base has a ring like heel. On the inside there are blue patterns and a white background is covered with enamel. The clay composition is clean. The clay colour is creamy.	Unit 3 Depth: 20-40cm	Wall thickness – 0.5cm
17	Pitcher base	A medium size pitcher type vessel base fragment. The base is broad and flat. The body broadens sideways. There is fine sand admixture in the clay composition. The colour is light pink.	Unit 3 Depth: 20-40cm	Wall thickness – 0.7cm
18	Handle	A small handle fragment with a tape-shaped cross section. There is fine sand admixture in the clay composition. The colour is red.	Unit 3 Depth: 20-40cm	Cross section- 1.6cm
19	Vase base	A small vase-type vessel base fragment. The base is narrow and has a ring like heel. The body broadens sideways. The clay composition is clean. There are corrugated traces of a potter's wheel on the inside. The surface is polished on the outside. The wall is thin. The colour is dark pink.	Unit 5 Depth: 20-40cm	Base d.-4.5cm wall th.-0.49cm
20	Vase base	A vase or a plate type vessel base fragment. The base is narrow and has a ring like heel. The clay composition is clean. On the inside there is white engobed coating underlying light green paint and black vegetational image patterns covered with enamel. The clay colour is red. Its rear side is polished.	Unit 5 Depth: 20-40cm	base d. - 6cm wall th.- 0.9cm
21	Handle	A fragment of a flat and elongated handle with a tape shaped cross section. It was connected to the vessel vertically. The clay composition is clean. The colour is pink.	Unit 5 Depth: 20-40cm	Cross section- 2.5cm
22	Orifice element	A small pitcher type vessel orifice element fragment. The orifice area is straight. It transforms directly into the body.	Unit 5 Depth: 20-40cm	Wall thickness- 0.6cm
23	Body	A vessel body fragment. On the surface there is a stripe comprised of thin scratched parallel lines. There is sand admixture in the clay composition.	Unit 5 Depth: 20-40cm	wall thickness – 0.5cm
24	Handle	A fragment of a handle with a tape shaped cross section. The clay composition is clean. The clay colour is creamy.	Unit 5 Depth: 20-40cm	Cross section- 1.9cm
25	Orifice element	A miniature vessel orifice element fragment. The orifice area is flat. It transforms directly into the body. The clay colour is grey. It's enamelled dark brown on the inside and dark blue on the outside. There is fine sand admixture in the clay composition.	Unit 5 Depth: 20-40cm	Wall thickness- 0.5cm
26	Plate body	A plate type vessel bottom fragment. The wall is thick. The clay composition is clean. On the inside it's painted green and girdled by two black, straight parallel lines. On one side of the lines there are also black triangular and wave-like patterns covered with enamel. The clay colour is light pink. The bottom is polished.	Unit 1 Depth: 40-60cm	wall thickness- 1.4cm
27	Orifice element	A fragment of a medium size vessel's broad orifice element. The orifice is bent sideways. The low and broad neck smoothly transforms into the shoulder. The wall is thin. The clay composition is clean. On the outside it's covered with blue enamel. There are white and black enamel traces visible in the orifice area. The clay colour is light pink.	Unit 1 Depth: 40-60cm	Orifice width- 1.8cm Wall thickness - 0.4cm
28	Body	A thin walled vessel body fragment. The section near the orifice area is girdled by thin scratched parallel lines. There is sand admixture in the clay composition. The colour is pink.	Unit 1 Depth: 40-60cm	wall thickness – 0.4cm
29	Body	A small thick walled vessel's body fragment. The clay composition is clean. There is white enamel coating on the inside and outside. There are blue and black coloured natural patterns on the inside. The colour is light pink.	Unit 1 Depth: 40-60cm	wall thickness- 0.8cm

No.	Type	Description	Unit/ Depth	Dimension
30	Salt cellar body	A small salt cellar type vessel body fragment. The body is convex. The clay composition is clean. On the inside and outside it's painted white with blue patterns and enamel coating.	Unit 1 Depth: 40-60cm	wall thickness-0.7cm
31	Body	A vessel body fragment. On the surface there is a wave like stripe comprised of thin scratched lines. The clay composition is clean. The colour is light pink.	Unit 1 Depth: 40-60cm	wall thickness-0.7cm
32	Plate orifice element	A plate type vessel orifice element fragment. The orifice area is bent sideways. The orifice area is smooth. The orifice area is girdled by a facet on both sides. The oval body begins under the lower facet. The clay composition is clean. The orifice area is gridled by black scratched and wave like lines with a green painted background. On the inside there are white natural images with a yellow background and glazing. There is creamy engobed coating in the back.	Unit 3 Depth: 40-60cm	Orifice width-2.5 cm Wall thickness-0.9cm
33	Plate orifice element	A plate type vessel orifice element fragment. The orifice area is bent sideways and slanted downward. The orifice area is girdled by indented dots. There are thin scratched lines along the orifice area. The orifice is framed by two facets. The body descends from the lower facet. The clay composition is clean. The colour is pink. There is white colour engobed coating on the inside. There are green enamel traces visible in the orifice area. Its rear side is polished.	Unit 3 Depth: 40-60cm	Orifice area width-2.7 cm Wall thickness-1cm
34	Vase base	A large vase type vessel base fragment. The wall is thick. The base has a ring like heel. The clay composition is clean. On the inside it's ornamented with black spiral-like natural images on a yellow-green background and enamelled. The clay colour is pink.	Unit 3 Depth: 40-60cm	Base diameter – 8.5cm wall thickness-1.7cm
35	Handle	A fragment of a narrow orifice vessel handle with a tape-shaped cross section. The orifice area has welt. From below the orifice area the handle descends straight with its lower end bending. There is sand admixture in the clay composition. The colour is light pink.	Unit 3 Depth: 40-60cm	Cross section-3cm
36	Orifice element	A small vessel orifice element fragment. The orifice area is bent sideways. The orifice area is smooth, rising slightly upward. It is girdled by two light brown coloured lines. On the inside the orifice area is painted dark brown and covered with glazing. On the surface there is an eye-resembling image. On the inside the vessel is also painted dark brown and white and covered with enamel. The clay composition is clean. There is a yellow stripe along the entire orifice area. There is white enamel coating below the orifice area. The clay colour is light grey.	Unit 3 Depth: 40-60cm	Orifice area width-2cm Wall thickness-0.5cm
37	Body	A miniature size vessel body fragment. The body is convex. The base is wide and flat. The clay composition is clean. The colour is light pink.	Unit 3 Depth: 40-60cm	wall thickness-0.3-0.5cm
38	Body	A small vessel body fragment. The orifice area transforms directly into the straight body. The clay colour is clear. On the inside white engobed coating underlies green coloured paint, covered with enamel. On the rear side of the orifice area there are light green and black coloured stripes. The colour is pink.	Unit 3 Depth: 40-60cm	wall thickness-0.5cm
39	Handle	A fragment of a narrow handle with a tape-shaped cross section. It was attached to the vessel vertically in an arched shape. There is a groove along the inside of the handle. The clay composition is clean. The colour is light pink.	Unit 3 Depth: 40-60cm	Cross section – 2cm
40	Orifice element	An orifice element fragment of a vessel made of a pearl. The orifice transforms directly into the body. Its surface is corrugated.	Unit 3 Depth: 40-60cm	
41	Vase base	A vase type vessel base. The base is narrow and has a ring like heel. The body broadens sideways. The clay composition is clean. On the inside it's painted light green with a black coloured flower image drawn in the middle. The middle part is girdled by two black parallel lines and covered with enamel. There is white engobed coating under the paint. The clay colour is reddish-brown. Its bottom is polished.	Unit 5 Depth: 40-60cm	Base diameter-6.5cm Wall thickness:0.5-1cm
42	Body	A vessel body fragment. There are two protruding holes over the body. The clay composition is clean. The colour is pink.	Unit 5 Depth: 40-60cm	
43	Orifice element	A fragment of a vessel's broad orifice element. The orifice area is smooth. It transforms directly into the body. There is fine sand admixture in the clay composition. The surface is enamelled. The colour is red.	Unit 5 Depth: 40-60cm	wall thickness.: 0.5-0.8cm

No.	Type	Description	Unit/ Depth	Dimension
44	Handle	A handle fragment with a tape-shaped cross section. It's narrow and convex. It is connected to the vessel vertically. There is fine sand admixture in the clay composition. The colour is white.	Unit 5 Depth: 40-60cm	Cross section-2cm
45	Handle	A fragment of a small vessel handle with a tape-shaped cross section. It's narrow and flat. It connects to the vessel vertically. There is a slight groove along the handle surface. The clay composition is clean. The colour is light pink.	Unit 5 Depth: 40-60cm	Cross section-2cm
46	Bowl base	A medium size bowl type vessel base fragment. The base is narrow and has a ring-like heel. From the base the body broadens sideways and rises upward. The surface is polished. There are horizontal grooves on the surface. The clay composition is clean. The colour is dark pink.	Unit 5 Inside furnace 1	Base diameter-6.5cm Wall thickness -0.5cm
47	Bowl body	A small bowl type vessel body fragment. It's a broad orifice vessel. The orifice area transforms directly into the body. The body narrows smoothly downward. There is sand admixture in the clay composition. On the inside there is a small papilla-shaped protrusion. The wall is thin. There is white engobed coating under black paint on the outside and green paint on the inside with enamel on either side. The clay colour is dark pink.	Unit 5 Inside furnace 1	Wall thickness -0.5cm
48	Blade	A knife or a dagger blade. It narrows toward the tip.	Unit 5 Inside furnace 1	Remaining part length- 9cm Width - 1.5-2.5cm
49	Articles	Fragments of iron items (4 pieces). They are wide, elongated with pointed tips.	Unit 5 Inside furnace 1	
50	Base	A medium size thick walled vessel base's half part. The base is wide and flat. There is fine sand admixture in the clay composition. From the base the body broadens slightly sideways. The colour is whitish.	Unit 1 Depth:60-70cm	Base diam.-12cm Wall thickness-1.7cm
51	Vase base	A small vase type vessel base half part. The base is narrow and has a ring like heel. From the base upward the body broadens sideways. There is fine sand admixture in the clay composition. On the inside it's enamelled in white and black colours. The clay colour is light pink. The white enamel traces are visible on the bottom side as well.	Unit 1 Depth:60-70cm	Base diameter-5.5cm
52	Rim sherd	A small vessel orifice fragment. The orifice area is broken. There is flat welt on its rear side. On the inside it's enamelled over green and black stripes with a blue background and violet dots. Its rear side has white engobed coating, while the front of the orifice area is painted blue. The clay composition is clean. The colour is light pink.	Unit 1 Depth:60-70cm	Base diameter -5.5cm
53	Handle	A wide and flat handle with a tape-shaped cross section. There is a facet in the middle of its top and bottom sides. There is fine sand admixture in the clay composition. The colour is whitish.	Unit 1 Depth:60-70cm	Cross section-4.3cm
54	Base	A medium size vase type vessel base half part. Its body broadens sideways. The base is narrow and has a ring like heel. On the inside it's enamelled over green natural patterns against a white background. There are white engobed coating traces left on the bottom.	Unit 1 Depth:60-70cm	Base diameter-7cm wall thickness-0.8cm
55	Base	A medium size pitcher-type ceramic vessel's base fragment. The base is flat. The body broadens upward. There is fine sand admixture in the clay composition. The surface is not smooth. The colour is red.	Unit 1 Depth:60-70cm	Base diameter-8.5cm Wall thickness-0.5cm
56	Base	A medium size vessel base fragment. The base has a ring like heel. From the base the body broadens sideways. The clay composition is clean. The surface is polished. The colour is dark pink. There is white engobed coating on the inside.	Unit 5 depth:70-90cm	Base diameter-6.5cm Wall thickness-0.6cm
57	Fragments	A small porcelain vessel base, orifice element and body fragments. There is fine sand admixture in the clay composition. The colour is white. There is white enamel on both sides of the surface.	Unit 5 depth:70-90cm	
58	Base	A medium size vessel base. The base has a ring like heel. The body broadens sideways. The clay composition is clean. The colour is whitish. The surface is enamelled. The wall is thin.	Unit 5 depth:70-90cm	Base diameter-7.5cm Wall thickness-0.3cm

No.	Type	Description	Unit/ Depth	Dimension
59	Body	A large household jug's body fragment. On the surface there is a slightly visible, protruding horizontal chain-like stripe. The wall is thick. There is gravel and sand admixture in the clay composition. The colour is red.	Unit 1 Depth:70-90cm	Wall thickness-2cm
60	Orifice element	A plate type vessel orifice element fragment. The base is wide and flat. Its side rises upright. The orifice area is inclined slightly sideways. On the inside the base is enamelled in dark green colour. On the inside the flank is enamelled over black scratched horizontal patterns against a green background. There is a white engobed coating layer visible beneath the paint. The rear side of the flank also has a pattern of parallel horizontal scratched lines and white engobed coating. Enamel traces with green paint are seen over the engobed coating. The clay composition is clean. The colour is dark pink.	Unit 1 Depth:70-90cm	Flank height-2cm Wall thickness-0.6cm
61	Base	A medium size vessel base half part. The body broadens sideways. The base has a ring like heel. There is a fine sand admixture in the clay composition. The colour is whitish. The wall is thin.	Unit 1 Depth:70-90cm	Base diameter-7.5cm Wall thickness-0.3cm
62	Orifice element	A plate type vessel orifice fragment. The orifice area is bent sideways and upward. It has welt and rises upright. The orifice area is corrugated all around. The clay composition is clean. The base is oval. Below the orifice there is a small protruding hole made in the base (diameter - 0.4cm). The wall is thick. On the inside there is pale green paint over white engobed coating. It's polished on the outside.	Unit 1 Depth:70-90cm	
63	Body	A large vessel body fragment. There is slight welt in the orifice area. Its broad neck smoothly transforms into the shoulder. The orifice area is broken. There is sand admixture in the clay composition. It was baked in unstable temperature. The colour is red.	Unit 1 Depth:70-90cm	Neck height-4.5cm Wall thickness-0.8cm
64	Base	A tray type vessel bottom part fragment. Its bottom is wide and flat. The clay composition is clean. On the inside it's enamelled over wave-like and elongated dotted line patterns with a yellowish-green background. The clay colour is dark pink.	Unit 1 Depth:70-90cm	
65	Base	A small vessel base fragment. The base is flat. The body rises, broadening sideways. There is sand admixture in the clay composition. The colour is red.	Unit 1 Depth:70-90cm	Wall thickness-0.5cm
66	Neck	A medium size vessel neck fragment. Its broad neck is bent sideways, transforming smoothly into the shoulder. On the neck there is wavy stripe comprised of scratched lines. The vessel shoulder is girdled by a stripe of straight scratched lines. The wall is thick. The clay composition is clean. It was baked in unstable temperature. The colour is pink.	Unit 3 Depth:70-100cm	wall thickness-1cm
67	Base	A small size vessel base. The base is narrow and flat. From the base upward the body broadens sideways. There is fine sand admixture in the clay composition. The vessel is roughly made. The colour is whitish.	Unit 3 Depth:70-100cm	Base diameter-5.5cm Wall thickness-0.7cm
68	Orifice element	A bowl type vessel orifice area fragment. The round orifice area is inclined inward. From the orifice area the body slightly broadens and then narrows. There is sand admixture in the clay composition. The surface is enamelled. The colour is red. The wall is thinning downward.	Unit 3 Depth:70-100cm	wall thickness:0.3 -1cm
69	Neck	A narrow neck decanter type vessel neck fragment. Its surface is corrugated. The orifice area is visibly broadening slightly. It was low, transforming smoothly into the shoulder. There is creamy coloured engobed coating on the surface.	Unit 3 Depth:70-100cm	Neck diameter-3.5cm Height -2.2cm Wall thickness-0.5cm
70	Base	A vase type vessel base. The base is narrow and has a ring like heel. The middle of its bottom is convex. It belongs to a thick walled vessel. On the inside of the vessel there is	Unit 3 Depth:70-100cm	Base diameter-6cm
71	Base	A medium size pitcher type vessel base fragment. The base is wide and flat. From the base upward the body broadens sideways. The clay composition is clean. The colour is pink. The surface is polished.	Unit 5 Depth:70-90cm	Base diameter-10cm Wall thickness-0.5cm
72	Orifice element	A large pitcher orifice element fragment. The orifice was wide and bent sideways. There are pressed indent patterns in the orifice area. The orifice is broad. The low and broad neck smoothly transforms into the shoulder. There is fine sand admixture in the clay composition. The clay colour is grey and on both sides the surface colour is light pink.	Unit 5 Depth:70-90cm	Orifice width-4cm Wall thickness-0.8cm

No.	Type	Description	Unit/ Depth	Dimension
73	Body	A vessel body fragment. There is a horizontal narrow model chain like stripe on it. There is sand admixture in the clay composition. The wall is thick. The colour is light pink.	Unit 5 Depth:70-90cm	Wall thickness-1cm
74	Handle	A fragment of a wide handle with a tape-shaped cross section. Its bottom is flat and the top is slightly convex. There is sand admixture in the clay composition. In the middle of its bottom there is a facet along the handle. The clay colour is grey and the surface is light pink.	Unit 5 Depth:70-90cm	Cross section-3cm
75	Orifice element	A medium size pitcher's orifice element fragments. The orifice opens slightly sideway. The low and broad neck smoothly transforms into the shoulder. There is significant fine sand admixture in the clay composition. The colour is grey.	Unit 5 Depth:1m	Wall thickness-0.7cm
76	Orifice element	A plate type vessel orifice element fragment. The orifice area is bent sideway. The orifice area is painted blue on upper side and girdled by two white stripes. The space between the stripes is also coloured blue. There is a black line in the middle of the top stripe. The orifice area is painted black with a white coloured and enamelled lower part. The clay composition is clean. The colour is pink.	Unit 5 Depth:1m	Orifice width-2.5cm Wall thickness-0.6cm
77	Handle	A small ceramic vessel's handle fragment. Its cross section is tape-shaped. It connects the vessel orifice	Unit 5 Depth:1m	Cross section-2.6cm
78	Base	A small vessel base fragment. The base is wide, flat and uneven. From the base the body broadens sideway. There is fine gravel and sand admixture in the clay composition. The colour is light pink.	Unit 5 Depth:1m	Wall thickness-0.5cm
79	Handle	A vessel lid handle. It's cylinder shaped. There is an indent on the top. Its lower side broadens sideways. There are two rows of granular and wheat-like, notched patterns girdling the top of the lid. There is sand admixture in the clay composition. The colour is brown.	Unit 5 Depth:1m	Top diameter-3.5cm Bottom diameter-4.5cm
80	Handle	A large crock-type vessel handle fragment. The orifice is narrow. On the rear side of the orifice there is a thick, wide handle with a tape shaped cross section, and one of its edges is connected to the orifice area, while the other one goes down. There is fine sand admixture in the clay composition. There is a slight facet along the handle in the middle. The colour is whitish. The wall is thin.	Unit 5 Depth:1m	Cross section width-4.4cm Thickness-2.8cm Wall thickness-0.4cm
81	Body	A vessel body fragment. Most likely, it's a plate type vessel lower part. On the inside there are two dark green parallel lines girdling the middle of the vessel against a green background. There are spiral-like patterns above the lines and leaf-shaped ones below the lines. There is transparent enamel covering the surface. Its bottom is entirely covered with yellowish-brown enamel. There is white engobed coating under the paint. The wall is thick. The clay composition is clean. The colour is pink.	Unit 5 Depth:1m	Wall thickness-1.2cm
82	Orifice element	A salt cellar type small vessel orifice fragment. The orifice was made thinner. The body broadens from the orifice area downward. The base is wide and flat. On the inside there is enamel over the green painted base, while the body was painted white and there is a black line between those. On the rear side of the vessel there is white engobed coating and there are black paint traces on the bottom. The clay composition is clean. The colour is light pink.	Unit 5 Depth:1m	Wall thickness-0.7cm
83	Orifice element	An enamelled ceramic vessel fragment. The thick walled, red item was made of well baked clay with clean composition. There is green coloured enamel on the vessel's outside surface. On the inside the transparent enamel covers tints of brown and green paint. Concentric and ornamented patterns were applied around the entire vessel.	Unit 1 Depth: 1.1m	Wall thickness-1cm
84	Orifice element	A relatively high heeled ceramic vessel's fragment. The red coloured item was made of well baked clay with clean composition. The enamel coating crumbled on the inside. Potter's wheel traces are clearly visible.	Unit 1 Depth: 1.1m	Wall thickness-7mm Heel height-1.2cm

No.	Type	Description	Unit/ Depth	Dimension
85	Enamelled vessel	A shallow, flat shaped enamelled vessel fragment. Its wall is straight and the base is flat and wide. The vessel is entirely enamelled on the inside and outside. It's painted green on the outside, while on the inside transparent enamel covers plain yellow-painted patterns. Elements of wavy patterns are visible throughout the outside wall. It was red coloured, made of well baked clay with clean composition.	Unit 1 Depth: 1.1m	Wall thickness-9mm
86	Orifice element	A ceramic fragment with wavy and concentric line patterns drawn over green paint on the inside. The surface is enamelled. Potter's wheel traces are clearly seen on the outside.	Unit 1 Depth: 1.1m	Wall thickness-8mm
87	Pitcher fragment	An orifice element fragment of a thin wall, light red pitcher made of well baked clay with sand admixture. The orifice area, which had slight welt, is bent inward. It was made on a potter's wheel.	Unit 1 Depth: 1.1m	Wall thickness-0.5cm
88	Pitcher fragment	A fragment of a vessel with a pattern applied on the body by a comb-like tool prior to baking. Apparently, it had a narrow neck and a pear-shaped body. The clay is red coloured and well baked with sand admixture.	Unit 1 Depth: 1.1m	Wall thickness-0.6cm
89	Handle	A flat, wide and elongated handle. Perhaps, it was part of a crock-type ceramic vessel. The clay colour was red. It's well baked.	Unit 1 Depth: 1.1m	Length -10cm Width-3cm
90	Enamelled plate	An enamelled ceramic plate fragment. A transparent enamel layer covers dark brown paint. Vegetational image ornaments were applied inside the vessel. It's perfectly baked of high-quality clay. The orifice area is bent upward. Presumably, it was made on a potter's wheel.	Unit 8 20-40cm	Wall thickness-0.5cm Length-11.5cm
91	Plate	A small plate-type enamelled ceramic vessel fragment. It was covered with white engobed coating first, then dark blue lines were drawn over it and black wave-like patterns were applied between the lines, covered with transparent enamel. White paint was applied plainly just on the vessel inside. Its clean composition clay is well baked.	Unit 8 20-40cm	Orifice diameter-12cm Wall thickness-0.4cm
92	Enamelled pottery	A ceramic vessel fragment with light green plain pattern on the inside underlying a black natural image ornament covered with enamel. The paint is covered with a transparent enamel layer. It has a heel. The light red item was made of very well baked clay. On the vessel bottom there is a trace presumed to be a stamp. Most likely, this is a stamp of the potter specifically serving to identify him. Presumably, the signs are written in Arabic.	Unit 8 20-40cm	Wall thickness-0.7cm
93	Enamelled vessel base	A fragment of an enamelled ceramic vessel base with a relatively high heel. On the inside of the vessel there is green and blue paint under dark green and dark blue coloured natural patterned flowers and leaf images. These coloured patterns are covered with a transparent enamel layer. Apparently, it was made on a potter's wheel. The light pink item was made of well baked clay.	Unit 8 20-40cm	Wall thickness-0.5cm
94		The red coloured item was made of well baked clay with clean composition. On the inside of the vessel there is a green and brown enamel layer. The enamel crumbled. It was made on a potter's wheel. It has a relatively high heel.	Unit 8 20-40cm	Wall thickness-0.7cm Heel height-1.6cm
95	Enamelled plate	An enamelled ceramic plate fragment. On the inside there is white paint covered with dark brown natural image patterns.	Unit 8 20-40cm	Wall thickness-0.6cm
96	Enamelled pottery	An enamelled vessel fragment with a transparent enamel layer covering light green and blue paint on the inside. The blue tints are comprised of thick stripes. The light creamy item was made of well baked clay with clean composition.	Unit 8 20-40cm	Wall thickness-0.5cm
97	Handle	A handle fragment of a ceramic article without enamel. Its cross section is tape-shaped. The red item was made of well baked clay.	Unit 8 20-40cm	
98	Handle	A fragment of a crock type ceramic vessel's tape-shaped handle. It's wide and flat. There is a canal-like stripe in the middle. On its top side there is a bird talon-like shaped image applied prior to baking. The light brown coloured item was baked well.	Unit 8 20-40cm	Width- 4.7cm
99	Base	A base fragment of a thick walled, red ceramic vessel made of well baked clay with sand admixture.	Unit 8 20-40cm	Wall thickness-1cm
100	Base	A fragment of the bottom of a ceramic vessel made of clean composition, white clay. It has a heeled base. The base is pressed on the inside. It was made on a potter's wheel.	Unit 8 20-40cm	Wall thickness-0.7cm

No.	Type	Description	Unit/ Depth	Dimension
101	Enamelled plate	A fragment of a ceramic plate entirely painted and enamelled on the inside and outside. It was deep. It's decorated with patterns comprised of the tints of dark green and dark brown colours. On its edges and the inside there are geometrical elements or a pattern element resembling the Arabic letter "sin". It's nicely made.	Unit 8	Orifice diameter-90cm Wall thickness-0.5cm
102	Dopu- type vessel	A dopu-type ceramic vessel without enamel. It had a base with a heel. It's indented in the middle. It was made on a potter's wheel.	Inside furnace	Orifice diam.-90cm Wall thickness-0.5cm
103	Enamelled bowl	An enamelled bowl fragment. The red item was made of well baked clean composition clay. It's relatively deep and spherical. On the inside light blue paint is covered with a dark brown natural pattern featuring a flower image in the middle. There is enamel coating on it. It has a heel. It was made on a potter's wheel.	Unit 8 Depth: 60cm	Base diam.-6.7cm Heel height -1cm
104	Vase or plate fragment	The bottom part fragment of a thick wall, red coloured ceramic vessel made of well baked clean composition clay. There are potter's wheel traces on the inside. Its heel is relatively protruding. The enamel crumbled on the inside.	Unit 5 Depth: 1.1cm	Base diam.-7.5cm wall thickness-0.8cm
105	Small vessel	A fragment of a vessel with a round base on a heel. The red coloured item was made of well baked clay with sand admixture. It has thin white engobed coating.	Unit- 5 Depth:1.1m	Base diam.-7.5cm Wall thickness -0.8cm
106	Enamelled pottery	A fragment of a ceramic vessel with transparent enamel covering a natural image pattern on the inside. The red coloured item was made of well baked clay. The vegetational image was applied with dark brown paint.	Unit- 5 Depth:1.1m	Wall thickness-0.8cm
107	Enamelled pottery	A fragment of a thick walled, red enamelled ceramic vessel made of well baked clay with clean composition. The bottom part of the vessel has a relatively protruding heel. On the inside it was first painted plain green with black coloured natural pattern of flower images covered with transparent enamel. There is engobed coating under the enamel. It was made on a potter's wheel.	Unit 8 Depth: 40-60cm	Wall thickness-1cm
108	Enamelled plate	A plate type ceramic vessel with a transparent enamel layer covering pale green paint on the inside. The orifice area is bent outward. There are potter's wheel traces on the outside.	Unit 8 Depth: 40-60cm	Wall thickness-0.4cm
109	Pitcher fragment	An orifice element fragment of a ceramic pitcher without enamel with a thick orifice area and a thin body wall. The vessel orifice area had thick welt and was bent outward. The red coloured item was made of well baked clay with sand admixture.	Unit 8 Depth: 40-60cm	Wall thickness-0.5cm
110	Handle	A large ceramic vessel handle fragment. It's wide and tape-shaped. It's slightly canal like in the middle of the top side. Light creamy coloured, it was made of well baked clay with sand admixture.	Unit 8 Depth: 40-60cm	Width-5.3cm Thickness-2cm
111	Handle	A large ceramic vessel handle fragment. It's wide and tape-shaped. It's slightly canal-like in the middle of the top side. The light creamy coloured item was made of well baked clay with sand admixture.	Unit 8 Depth: 40-60cm	Width- 5.3cm Thickness-2cm
112	Enamelled vessel base	A base fragment of an enamelled ceramic vessel with transparent enamel covering white and dark blue paint on the inside. There is a part of a blue coloured natural image pattern left on the inside. Light creamy coloured, it has a little heel. It was made on a potter's wheel.	Unit 12 Depth:20-40cm	Wall thickness-0.7cm
113	Enamelled vessel base	A ceramic vessel fragment. On the inside an enamel layer covers various black ornamental patterns on a dark green painted background. Red coloured, it was made of well baked clay with clean composition. It was made on a potter's wheel and has a small heel.	Unit 12 Depth:20-40cm	Wall thickness-1cm
114	Enamelled plate	A ceramic fragment with transparent enamel covering white and brown coloured, plain and concentric patterns on the inside. On the outside the orifice area is convex. It was made of well baked clay.	Unit 12 Depth:20-40cm	Wall thickness-0.6cm
115	Enamelled pottery	An orifice element fragment of a small enamelled ceramic vessel with light blue paint on the inside and outside and parallel lines on the edges. The vessel's orifice area is slanted sideway. It was baked very well.	Unit 12 Depth:20-40cm	Wall thickness-0.4cm

No.	Type	Description	Unit/ Depth	Dimension
116	Enamelled vessel	An enamelled pottery fragment with dark brown ornamental patterns over plain light yellow paint on the inside. The red coloured item was made of well baked clean composition clay. It was made on a potter's wheel.	Unit 12 Depth:20-40cm	Wall thickness-0.7cm
117	Enamelled plate	A fragment of a plate with various natural ornaments on the inside and outside applied using the tints of white, light green, black and dark brown paint. It was made of well baked, white clay with clean composition.	Unit 12 Depth:20-40cm	Wall thickness-0.5cm
118	Boiler	An orifice element fragment of a thick walled, brown boiler type ceramic vessel made of well baked clay with sand admixture. The orifice area has welt and is bent outward. It was made on a potter's wheel.	Unit 12 Depth:20-40cm	Wall thickness-0.7cm
119	Miniature vessel fragment	A fragment of miniature size ceramic without enamel carved with a comb-like tool prior to baking. The red item was made of well baked clean composition clay. There is a trace of a potter's wheel on the inside.	Unit 12 Depth:20-40cm	Wall thickness-0.5cm
120	Handle	A small ceramic vessel's handle fragments. Red coloured, it was made of well baked clay with clean composition. It's tape-shaped.	Unit 12 Depth:20-40cm	Width-2cm
121	Handle	A large tape-shaped handle fragment. A fragment of a pitcher made of red, well baked clay with sand admixture. It is shaped like a jar and cylindrical. The base is flat. On the inside there is a trace of spinning on a potter's wheel.	Unit 12 Depth:20-40cm	Width -3.5cm
122	Pitcher	A fragment of a thick walled pitcher made of light pink, well baked clay with sand admixture. It's shaped like a jar and cylindrical. The base is flat. On the inside there is a trace of a potter's wheel.	Unit 12 Depth:20-40cm	Body diam.-20.2cm Base diam.-12.5cm Wall th. 0.8cm
123	Enamelled plate	An enamelled ceramic fragment with transparent enamel covering the tints of light blue and dark brown coloured paint ornaments on the inside. Dark brown colour was used to apply the natural ornament elements on the inside of the vessel. The red coloured item was made of well baked clay with clean composition.	Unit 8 Depth:50cm	Wall thickness-0.6cm
124	Enamelled plate	An enamelled ceramic plate fragment with transparent enamel covering ornaments comprised of the tints of white, light brown and dark black colours on the inside. The orifice area of the plate opens widely sideways. The pink coloured item was made of well baked clay with clean composition.	Unit 8 Depth:70cm	Wall thickness-0.5cm
125	Enamelled plate	A ceramic plate fragment with transparent enamel covering dark brown images on a pale blue plain background on the inside. Stylized bird images were applied on the inside of the orifice area. The surface is enamelled. Red coloured,	Unit 8 Depth:70cm	Wall thickness-0.6cm
126	Enamelled pottery fragment	A vessel fragment with dark brown natural pattern elements on a plain white painted background on the inside. The pattern elements on the inside of the vessel are comprised of various vegetational, flower leaves and stylized nightingale images. The blank spaces in the middle are filled in with blue paint. The surface is enamelled. The light pink item was made of well baked, clean composition clay.	Unit 8 Depth:70cm	Wall thickness-0.8cm
127	Enamelled plate	An enamelled ceramic article with a mixture of light brown and coffee-coloured paint on the inside. These pattern elements are comprised of various natural images. It was made of light yellow, well baked clay with clean composition.	Unit 8 Depth:70cm	Wall thickness-0.5cm
128	Enamelled plate	There are natural image elements on the inside applied in a mixture of white and dark blue colours. Its surface is covered with transparent enamel. Light red coloured, the item was made of well baked clay with clean composition.	Unit 8 Depth:70cm	Wall thickness-0.7cm
129	Enamelled plate	A vessel fragment with a pattern comprised of geometrical lines against a green background on the inside. Its surface is covered with transparent enamel. The orifice area opens widely sideways. There are wave-like patterns on the inside. The red item was made of well baked clay with clean composition.	Unit 8 Depth:70cm	Wall thickness-0.8cm
130	Base	A base fragment of a light red coloured vessel made of well baked clay with clean composition. It was processed on a potter's wheel.	Unit 8 Depth:70cm	Base diam.-7.5cm

No.	Type	Description	Unit/ Depth	Dimension
131	Enamelled vase base	A base fragment of a vase with a slight enamel layer covering a plain, coffee-coloured pattern. It has a heel. The red coloured item was made of well baked, clean composition clay. There is brown engobed coating on the outside surface. It was made on a potter's wheel.	Unit 8 Depth: 70cm	Base d.-7cm Wall th.0.4cm
132	Kheyra	A fragment of a thin walled, brown coloured "kheyra" type ceramic vessel made of slightly baked clay with sand admixture. It's shallow. The orifice area had welt and was bent outward. There is a trace of burning on the inside. There are slight traces of polishing on the surface. There are traces of spinning on a potter's wheel.	Unit 8 Depth: 70cm	Wall thickness-0.4cm
133	Handle	A flat and tape-shaped handle fragment. It's baked of white, clean composition clay. There is a canal-like groove on its top side.	Unit 8 Depth: 70cm	Width-4cm
134	Handle	A flat, wide and tape-shaped handle fragment. There is a deep canal-like line set in on its top side. It's covered with soot.	Unit 8 Depth: 70cm	Width- 4.5cm
135	Handle	A handle fragment of a ceramic vessel made of red coloured, well baked clay with sand admixture. It's tape-shaped.	Unit 8 Depth: 70cm	Width – 3.5cm
136	Handle	A thin, wide handle fragment. There is a canal-like groove on its surface. Pink coloured, it was made of well baked clay with clean composition.	Unit 8 Depth: 70cm	Width-2cm
137	Handle	A small handle fragment. It's wide. It was made of slightly baked clay with sand admixture.	Unit 8 Depth: 70cm	Wall th.- 1.8cm
138	Handle	A flat, wide handle fragment. It belongs to a cup-type, light grey ceramic vessel made of well baked clay with fine sand admixture. It connected the vessel orifice area with the shoulder. There is an indent in the middle of its top side.	Unit 12 Inside furnace 6	Wall thickness-4.5cm
139	Iron article	A fragment of an item made of iron.	Unit 12 Inside furnace 6	10x9.5cm
140	Pitcher	A small pitcher. It has a narrow neck and a spheric body. There are concentric lines drawn in the neck area. The body is ornamented with horizontal polished patterns resembling sunrays. The red coloured item was made of well baked clay with clean composition.	Unit 12 Depth:60cm	Wall thickness-0.6cm
141	Base	A fragment of a base with a flat bottom. Light pink coloured, it was made of well baked clay with sand admixture. There is a trace of spinning on a potter's wheel.	Unit 12 Depth:60cm	Wall thickness-7.5cm
142	Pitcher	A fragment of a thin walled pitcher with thick welt on the orifice area. Red coloured, it was made of well baked clay with sand admixture.	Unit 12 Depth:60cm	Wall th.-0.5cm
143	Enamelled pottery	An enamelled ceramic article fragment with plain green coloured paint on the inside. It has a heel. Red coloured, it was made of well baked clay with clean composition.	Unit 12 Depth:60cm	Wall th.- 0.6cm
144		A ceramic fragment with transparent enamel covering light brown, plain paint on the inside. The red coloured item was made of well baked clay with clean composition.	Unit 12 Depth:60cm	Wall th.- 0.9cm
145		Fragment of a vessel with black coloured concentric and wave-like patterns over a plain green-painted background on the inside. The thick walled item was made of well baked clay with clean composition.	Unit 12 Depth:60cm	Wall thickness-1cm
146	Enamelled plate	An enamelled plate fragment. On the inside transparent enamel covers blue and green coloured paint. There are geometrical ornament elements on the inside. It's coloured white on the outside.	Unit 12 Depth:60cm	
147		An enamelled plate fragment with natural images on the outside and plain patterns on the inside. It's painted blue. It's light brown coloured. The clay composition is clean.	Unit 12 Depth:60cm	Wall th.- 0.5cm
148	Porcelain vessel	A dark blue coloured miniature size porcelain vessel's fragment.	Unit 12 Depth:60cm	Wall th.-0.6cm
149	Deer horns	Deer horn bones. Traces of honing are clearly visible. The usage is not clear.	Unit 12 Depth:60cm	Wall th. – 0.4cm
150	Lamp	A lamp made of light brown clay. The orifice for fuel filling on its top side is narrow and the body is spheric. The handle part is broken. It's spout part is elongated and covered with soot. On its top side there is a pattern of irregular cuts applied prior to baking. Its bottom is flat. It's handmade.	Unit 10 Depth:70cm	Height -8cm body diam.-11cm Spout length-8cm

No.	Type	Description	Unit/ Depth	Dimension
151	Base	A large vessel base fragment. The base is wide and has a ring like heel. From the base the body broadens sideways. The wall is thick. The clay composition is clean. The colour is red. There are red paint traces on the inside.	Unit 12 Depth: 80cm	Base diam.- 10.5cm Wall thickness- 1.4cm
152	Body	A large jug body fragment. The upper part of the body is girdled by a narrow, chain-like model stripe. There is sand admixture in the clay composition. The colour is pink.	Unit 12 Depth: 80cm	Wall thickness- 1cm
153	Lid	A vessel lid fragment. It's disc-like shaped. It becomes convex toward the centre. The clay composition is clean. The colour is red. There are traces of red paint left on its bottom. The wall thickens toward the middle.	Unit 12 Depth: 80cm	Wall thickness- 0.8 -1cm
154	Orifice element	A broad orifice vessel's orifice element fragment. The orifice area has welt. It transforms directly into the neck or the body. The clay composition is clean. Its neck is girdled by a red-painted thin stripe. The red paint traces are visible on the orifice area as well. The clay colour is red. The wall is thin.	Unit 12 Depth: 80cm	Rim diameter- 23cm Wall thickness- 0.5cm
155	Handle	A fragment of a handle with a tape-shaped cross section that was connected to the vessel vertically. It's flat. It is bent in semi-circular shape. One of its ends is connected to the orifice area. The clay composition is clean. The wall is thin. The colour is light pink.	Unit 12 Depth: 80cm	Cross section width-2.5cm Wall thickness- 0.4cm
156	Body	A vessel body fragment. The wall is thick. There is a model chain-like pattern on it. The clay composition is clean. The colour is red.	Unit 12 Depth: 80cm	Wall th.-1.1cm Stripe width- 2cm
157	Base	A medium size pitcher-type vessel base. The base is wide and flat. From the base the body rises, broadening sideways. The wall is thin. There is an indent in the middle of its bottom. There is a convex circle visible on the inside. The colour is pink.	Unit 12 Depth: 80cm	Base-8.6 cm Wall thickness - 0.3cm
158	Body	A small bowl or piyale-type vessel body fragment. There is sand admixture in the clay composition. The colour is greyish pink. There is white engobed coating on both sides of the surface underlying blue geometrical and vegetational patterns covered with enamel.	Unit 12 Depth: 1m	Wall thickness- 0.5cm
159	Orifice element	A salt cellar or saucer-type small porcelain vessel's orifice fragment. The orifice area is smooth. It transforms directly into the body. There is white engobed coating underlying white paint on both sides of the surface. The orifice area and the inside of the bottom part are painted blue. On the inside	Unit 12 Depth: 1m	Wall thickness- 0.5cm
160	Orifice element	A small piyale-type vessel's orifice fragment. The orifice area is bent slightly sideways. The orifice area has welt. It transforms directly into the body. The lower part of the body is separated from the oval base with a facet. The clay composition is clean. The colour is pink. The wall is thin.	Unit 12 Depth: 1m	Wall thickness- 0.4cm
161	Body	A large vessel body fragment. There are two model chain-like stripes on it with a space of 7.2cm between them. The chain links of the upper stripe are bigger than those of the lower one. There is sand admixture in the clay composition. The clay colour is grey. The surface colour is light pink.	Unit 12 Depth: 1m	Wall thickness- 1cm
162	Body	A small, thin walled vessel's body fragments. There are wave-like and straight stripes comprised of thin scratched, parallel lines on it. The clay composition is clean. The colour is red.	Unit 12 Depth: 1m	Wall thickness- 0.4cm
163	Body	A plate type vessel body fragment. There is white engobed coating on both sides of the surface underlying a pattern of black pointed stripes against a light blue coloured background with enamel. The clay colour is light pink. There is sand admixture in the clay composition.	Unit 12 Depth: 1m	Wall thickness- 0.5cm
164	Orifice element	A plate-type vessel orifice element fragment. The orifice area is bent sideways. It's separated from the body with a facet. On the inside there is white engobed coating underlying white paint, with blue paint on the orifice area and the bottom. Black lining was applied to the orifice area facet. Another black line extends along the orifice area in parallel to the facet. There is transparent enamel covering the paint.. The clay composition is clean. The colour is red.	Unit 12 Depth: 1m	Wall thickness- 0.2-0.4cm
165	Handle	A handle fragment with a tape-shaped cross section. It is connected to the vessel in semi-circular shape. The clay composition is clean. The colour is white.	Unit 12 Depth: 1m	Cross section width-2.4cm

No.	Type	Description	Unit/ Depth	Dimension
166	Spare part	A fragment of an item made of an iron plate.	Unit 12 Depth: 1m	
167	Enamelled plate	An enamelled ceramic plate fragment. On the inside there is white paint underlying brown, blue coloured natural patterns. Its red coloured clay is well baked.	Unit 12 Depth: 1m	Wall thickness-0.5cm
168	Enamelled plate	A fragment of an enamelled ceramic vessel painted brown on both sides and then decorated with patterns of scratched lines. The red clay has a clean composition.	Unit 12 Depth: 1m	Wall thickness-0.4cm
169	Decanter neck	A narrow orifice decanter fragment. The orifice area has welt. The neck is corrugated. It smoothly transforms into the shoulder. The red item was made of well baked clay.	Unit 12 Depth: 1m	Wall thickness-0.4cm
70	Deer horns	Deer horns that were presumably processed.	Depth:90cm	Wall thickness-0.5cm
171	Base	The lower part of a large pitcher. The base is wide and flat. The body broadens from the base upward. There is fine sand admixture in the clay composition. The colour is pink. The wall is thin.	Unit 8 Depth: 1m	Base diam.-14cm Wall th.- 0.5cm
172	Pitcher	A small pitcher. The orifice area opens sideways. The low neck smoothly transforms into the shoulder. The body has a convex shape. The shoulder is girdled by two parallel scratched lines. The space in between is 2.5cm. The body narrows downward. The base is wide and flat. The wall is thin. The clay composition is clean. The colour is pink. The surface is polished. It's painted red.	Unit 10 Depth:1cm	Height of intact part 13.5cm Body diam.13cm Base d. 8.5cm Wall th.0.4cm
173	Pitcher	A half-part of a small pitcher with a sphere-shaped body. The shoulder is sharply indented. The orifice area is broken. It's girdled by five rows of stripes comprised of rhombic patterns with protruding dots inside. These stripes were applied by the stamping method. Below those stripes the lower part of the body is girdled by a grooved stripe. The base is narrow and has a ring-like heel. The wall is thin. The clay composition is clean. The colour is whitish.	Unit 10 Depth:1cm	Height of intact part-10cm Stock diam.-14.5cm Base diam.-7cm
174	Handle	A large vessel handle fragment. It's flat and has a tape-shaped cross section. The handle broadens from the orifice area downward. There is fine sand admixture in the clay composition. The colour is whitish. There are askew notched patterns on it.	Unit 10 Depth:1cm	Cross section width-4.5cm
175	Body	A vase type vessel body fragment. The body opens sideways. The wall is thick. There is fine sand admixture in the clay composition. It's painted green on the inside. In the middle the vessel is girdled by two parallel dark green painted lines. Above these lines there are spiral-like patterns, while underneath there are natural patterns covered with enamel.	Unit 10 Depth:1cm	Wall thickness-1.1cm
176	Neck	A fragment of a vessel's narrow neck. The orifice area opens slightly sideways. It transforms directly into the slightly convex neck. The wall is thin. The clay composition is clean. The surface is polished. The colour is light pink. The entire surface is painted red. The orifice area is painted red on the inside as well.	Unit 10 Depth:1cm	Wall thickness-5.3cm Wall thickness-0.3cm
177	Base	A large vase type vessel's base fragment. The base is narrow and has a ring-like heel. From the base the body broadens sideways and upward. It's a thick wall vessel. The clay composition is clean. It's painted yellow on the inside with two parallel lines girdling the middle part. The surface is polished. The colour is red.	Unit 10 Depth:1m	Base diameter-9.5cm Wall thickness-1.3cm
178	Base	A vase type vessel base fragment. The base is high, narrow and has a ring-like heel. The body broadens upward and sideways. On the inside it has white engobed coating under blue paint and is covered with enamel. The wall is thick.	Unit 10 Depth:1m	Base diam.-7.5cm Wall th.- 1cm
179	Body	A medium size boiler-type vessel's body fragment. The orifice area is inclined outward. It transforms directly into a convex body. In the lower part of the orifice area there is a wide and flat handle with a tape-shaped cross section connected to the body. There are notched patterns visible on the handle. The wall is thin. There is sand admixture in the clay composition. The colour is brown.	Unit 10 Depth:1m	Wall thickness-0.6cm
180	Orifice element	A large household jug orifice element fragment. The orifice area is slanted downward. In its lower part there are patterns comprised of barbed protrusions. The wall is thick. There is sand admixture in the clay composition. The colour is grey.	Unit 10 Depth:1m	Wall thickness-5.5cm

No.	Type	Description	Unit/ Depth	Dimension
181	Article	A fragment of an article made of a processed grey coloured cobblestone. It has a four-cornered shape. Although the bottom side is broken, it was presumably flat. The surface is convex. Its sides are carved in the middle along the stone.	Unit 10 Depth:1m	Dimensions: 10.7x6 .5x3.2cm
182	boar fang	Wild boar fang. The tip is sharp. It's arch-shaped. The tip is polished through usage.	Unit 8 Depth:80cm	Depth: 12.5cm
183	Pail	A neck fragment of a thin wall, pail-type, red ceramic vessel made of well baked clay with sand admixture. It has a narrow neck and a spheric body. The orifice area had welt and was bent outward. The neck and the shoulder are connected with a handle. There is a trace of spinning on a potter's wheel. The body part is covered with traces of burning.	Unit 12 Depth: 1m	Orifice diam.- 7cm Neck height-9.5cm Wall thickness- 0.5cm
184	Enamelled plate	A fragment of enamelled pottery made of white coloured, well baked clay with clean composition. It is part of a plate-type vessel. On the inside and outside white paint underlies blue and dark manganese-coloured patterns. The patterns are comprised of parallel and arch-shaped elements.	Unit 12 Depth: 1m	Wall thickness- 0.7cm
185	Pitcher	A fragment of a pitcher-type ceramic vessel made of white coloured, well baked clay with sand admixture. It has a narrow neck and a spheric body. The vessel neck and shoulder are connected with a tape shaped handle. There is an indent on the lower part of the handle. The neck and the shoulder are girdled respectively by lines and wavy patterns applied by a comb-like tool prior to baking. There are traces of a potter's wheel on the inside.	Unit 12 Depth: 1.2cm	Neck height- 7cm Handle width- 2.5cm Wall th.- 0.5cm
186	Pitcher	A narrow orifice pitcher. It's of miniature size. The thick walled, brown-coloured item was made of well baked	Unit 12 Depth: 1.2cm	Orifice diameter- 3.6cm
187	Pitcher	A fragment of a thick walled miniature size vessel made of grey coloured, well baked clay with clean composition. It had a narrow neck.	Unit 12 Depth: 1.2cm	Wall thickness- 0.5cm
188	Pitcher	A shoulder fragment of a thin wall pitcher made of white coloured, well baked clean composition clay. There are straight and wavy patterns applied with a comb-like tool.	Unit 12 Depth: 1.2cm	Wall thickness- 0.4cm
189	Pitcher	A narrow neck pitcher fragment. It's orifice area is straight. The neck sharply transforms into the shoulder. The thin walled, red item was made of well baked clay with fine sand admixture. Made on a potter's wheel.	Unit 12 Depth: 1.2cm	Wall thickness- 0.4cm
190	Enamelled plate	An enamelled plate fragment with light blue and green coloured patterns on the inside. The thick walled, light creamy coloured item was made of well baked clay with sand admixture. It was made on a potter's wheel.	Unit 12 Depth: 1.2cm	Wall thickness- 0.8cm
191	Enamelled plate	A fragment of a plate with an enamel layer covering brown coloured wavy and straight geometrical patterns against a green background on the inside. The red coloured item was made of well baked clay with clean composition.	Unit 12 Depth: 1.2cm	Wall thickness- 1cm
192	Enamelled plate	A fragment of a plain-shaped, deep plate. There is a transparent enamel layer with a green background on the inside. There are canal-like lines on the vessel outside. It was made on a potter's wheel.	Unit 12 Depth: 1.2cm	Wall thickness- 1cm
191	Base	A vase type vessel base fragment. The base is narrow and has a ring-like heel. From the base the body broadens sideway. The clay composition is clean. On the inside light grey engobed coating underlies whitish paint with black coloured natural image patterns on it. In the middle of this composition there is an image resembling a grasshopper in the central part of the vessel. There are wings extending at an angle into four sides from the image's centre. The wings are painted blue on the inside. The colour is red.	Unit-10 Depth:60- 70	Base diameter- 8.5cm Wall thickness-0.6cm

No.	Type	Description	Unit/ Depth	Dimension
192	Rim element	A plate type vessel rim sherd. The orifice is bent sideways. The orifice area is smooth. It's shallow on the inside with engobed coating underlying a whitish painted background and blue coloured natural image patterns. There is a dark green stripe comprised of two parallel lines around the entire orifice area. Bindweed image patterns were applied between the margins. The orifice area and its rear side are painted respectively blue and green, and with creamy colour, with green vegetational images applied in the back. The painted areas are entirely covered with transparent enamel. The clay composition is clean. The colour is light pink.	Unit-10 Depth:60-70cm	Wall thickness-0.7cm
193	Handle	A fragment of a handle with a tape-shaped cross section. There is fine sand admixture in the clay composition. Its clay is grey and the surface is red.	Unit-10 Depth:60-70cm	Cross section width-3.3cm
194	Rim sherd	A medium size pitcher-type vessel's orifice fragment. The orifice area was wide and inclined inward. Stamped chain-like patterns were applied throughout the orifice area. The neck is low and wide. There is fine sand admixture in the clay composition. The colour is light pink.	Unit-10 Depth:60-70cm	Orifice width-2.7cm Wall thickness-1cm
195	Rim sherd	A fragment of a medium size vessel's flat handle with a tape-shaped cross section. The handle is attached to the vessel orifice area and it descends straight. The clay composition is clean. The colour is light pink.	Unit-10 Depth:60-70cm	Cross section width-3.5cm
196	Rim sherd	A plate type vessel orifice fragment. The orifice area is bent sideways. The vessel is separated from the body with a facet. The orifice area and the inside of the vessel are girdled by dark green parallel lines over a green-painted background. The surface is enamelled. The bottom is polished. The clay colour is grey.	Unit-10 Depth:60-70cm	Orifice width-2.4cm Wall thickness-0.8cm
197	Rim sherd	A small pitcher-type vessel orifice element fragment. The orifice area opens sideways. The low neck smoothly transforms into the shoulder. The clay composition is clean. The wall is thin. The clay colour is grey and the surface is light pink.	Unit-10 Depth:60-70cm	Orifice diam.-9cm Wall thickness-0.2cm
198	Rim sherd	A plate type vessel's fragments. The clay composition is clean. The surface is painted grey on both sides, girdled by two black parallel lines in the middle, decorated with blue	Unit-10 Depth:60-70cm	Wall thickness-0.5-0.7cm
99	Spout	A lamp spout fragment. The short spout is pipe-shaped. The tip is widely split. It's positioned horizontally. There is sand admixture in the clay composition. The colour is light grey. Its surface is entirely covered with soot traces.	Unit-10 Depth:60-70cm	Diam.-2.2cm Length- 6cm
200	Fragments	Pearl fragments.	Unit-10 Depth:60-70cm	"-----" "
201	Fragments	A plate type vessel's fragments. The orifice area is separated from the flank with a facet and is bent sideways. The clay composition is clean. On the inside it has white engobed coating under a yellow painted background and wavy patterns with thin brown lines on the orifice area and straight geometrical lines on the body, all covered with enamel. The colour is red. There is a white engobed coating line along the back side of the orifice area. The wall is thin. The bottom is polished.	Unit 12 Depth: 1.2cm	Orifice width-3cm Flank height-2cm Wall th.-0.4cm
202	Spout	A large aftaba-type ceramic vessel spout. It was pipe-shaped, thinning slightly toward the tip. There is fine sand admixture in the clay composition. The colour is pink. The surface was painted red. It's positioned horizontally.	Unit 12 Depth: 1.2cm	Length- 8.5cm
203	Rim sherd	A large pitcher orifice element fragment. The orifice area is thick and wide. On the outside there is a rough protruding chain-like stripe throughout the orifice area. There is fine sand admixture in the clay composition. The clay colour is grey and the surface is light pink on both sides.	Unit 12 Depth: 1.2cm	Orifice width-4.2cm Wall thickness-1cm
204	Rim sherd	A small ceramic vessel's orifice area fragment. The orifice area is bent sideways and upward. The low neck smoothly transforms into the shoulder. The clay composition is clean. The colour is light pink.	Unit 12 Depth: 1.2cm	"-----" "
205	Handle	A fragment of a flat handle with a tape-shaped cross section. The clay composition is clean. The colour is pink.	Unit 12 Depth: 1.2cm	Cross section width-3.1cm

No.	Type	Description	Unit/ Depth	Dimension
206	Rim sherd	A vessel's funnels shaped rim. There is a thin facet over the neck. The wall is thin. The colour is light pink. The clay composition is clean.	Unit 12 Depth: 1.2cm	Wall thickness- 0.5cm
207	Rim sherd	A plate-type vessel's body fragment. The clay composition is clean. On the inside there are eye-shaped patterns on a mat green coloured background. Its bottom is painted whitish, decorated with brown, circular patterns and covered with enamel.	Unit 12 Depth: 1.2cm	Wall thickness- 0.8cm
208	Base	A vase type vessel base fragment. The base is narrow and has a ring-like heel. The body broadens sideways. The wall is thick. The clay composition is clean. On the inside there are traces of green and pale green enamel and white coloured engobed coating. The clay colour is dark pink, while the bottom was painted brown and polished.	Unit 12 Depth: 1.2cm	Wall thickness- 1cm
209	Rim sherd	A plate type vessel orifice element fragment. The orifice area is bent sideways. On the surface there are black lines on a green background. On the inside there are patterns resembling mountains covered with enamel. The clay composition is clean. The colour is pink. There is white engobed coating on the rear side.	Unit 12 Depth: 1.2cm	Wall thickness- 0.6cm
210	Rim sherd	A saucer type vessel orifice element fragment. The orifice area is smooth. The surface is decorated with black patterns on a blue background, while the bottom is painted blue and enamelled. The clay composition is clean. The colour is pink.	Unit 12 Depth: 1.2cm	Wall thickness- 0.5cm
211	Enamelled plate	An enamelled ceramic plate fragment. The thick walled, red coloured item was made of well baked clay with clean composition. On the inside there are dark brown ornamental images on a green background covered with transparent enamel.	Unit 16 Depth: 20-40cm	Wall thickness- 0.8cm
212	Enamelled plate	A plate fragment with a mixture of blue and green coloured paint and natural patterns covered with transparent enamel on the inside. The red coloured item was made of well baked clay with clean composition.	Unit 12 Depth: 1.2cm	Wall thickness- 0.8cm
213	Enamelled vase stand	A stand fragment of a high-heel vase made of light pink, well baked clay with clean composition. On the inside there are dark blue natural patterns on a white background and dark green, round-shaped ornamental images in the middle. It was further covered with a transparent enamel layer.	Unit 12 Depth: 1.2cm	Base diam.- 5.5cm Wall thickness-0.6cm
214	Enamelled pottery	An enamelled ceramic fragment with a green coloured plain pattern on the inside. Red coloured, it was made of well baked clay with clean composition.	Unit 12 Depth: 1.2cm	Wall thickness- 0.7cm
215	Enamelled plate	A fragment of a plate with a straight orifice area bent inward, made of well baked clay with clean composition. On the inside it's white and on the outside it has a light brown painted plain pattern and the surface is covered with transparent enamel.	Unit 12 Depth: 1.2cm	Wall thickness- 0.6cm
216	Enamelled plate	The vessel was painted white on the inside and outside, with blue and brown paint over the white one on the inside. The colours are round-shaped. Light red coloured, it was made of well baked clay.	Unit 12 Depth: 1.2cm	Wall thickness- 0.5cm
217	Enamelled plate	A fragment of a vessel covered with transparent enamel over light blue and white coloured paint on the inside and outside, and light blue natural images on the inside. Light red coloured, it was made of well baked clean composition clay.	Unit 12 Depth: 1.2cm	Wall thickness- 0.5cm
218	Miniature pitcher	A tiny pitcher item. It is a fragment of a ceramic vessel made of red, clean composition clay. There are patterns on it applied with a comb-like tool prior to baking.	Unit 12 Depth: 1.2cm	Wall thickness- 0.6cm
219	Handle	A miniature size ceramic vessel's handle fragment. It's tape-shaped. It was baked well using clay with clean composition.	Unit 12 Depth: 1.2cm	Base width- 1.4cm
220	Alloy	A remainder of iron alloy.	Unit 12 Depth: 1.2cm	
221	Pitcher	A fragment of a ceramic vessel made of light pink, well baked clay with clean composition. There are protruding stripe patterns on the body applied prior to baking.	Unit 12 Depth: 1.2cm	3.5x2.5cm
222	Handle	A flat, wide and tape-shaped handle fragment. It was well baked of clay with sand admixture. The colour is red.	Unit 18 Depth:40cm	Wall thickness- 0.6cm
223	Jug	A body fragment of a large, thick walled household jug made of grey coloured, well baked clay with sand admixture. There are twisted, "belt-like" patterns on the body.	Unit 18 Depth:40cm	Width- 4.5cm

No.	Type	Description	Unit/ Depth	Dimension
224	Alloy	A metal alloy.	Unit 18 Depth:40cm	Wall thickness- 1.2cm
225	Handle	A small vessel handle fragment. Its cross section is tape-shaped. It was connected to the vessel vertically in semi-circular shape. It has a groove along the middle of the top side. The clay composition is clean. The colour is pink.	Unit 18 Depth:40cm	Cross section width -1.6cm
226	Base	A small ceramic pitcher base fragment. The base is narrow and flat. From the base the body broadens sideways and upward. The clay composition is clean. The colour is brown. The wall is thin.	Unit 18 Depth:40cm	Base diam.-6cm wall th.- 0.3-0.5cm
227	Handle	A fragment of an elongated and narrow handle with a tape-shaped cross section. Its bottom is flat. Its upper side is slightly convex. There is a fine sand admixture in the clay composition. The colour is whitish.	Unit 18 Depth:40cm	Cross section width-1.9cm
228	body	A salt cellar-type tiny vessel's body half part. Its orifice was round and opened slightly sideways. Its low neck descends smoothly, transforming into a broad body. There is a facet in the body part transforming into the oval base. There is fine sand admixture in the clay composition. The clay colour is red and the surface is brown.	Unit 18 Depth:40cm	Wall thickness- 0.5cm
229	Rim sherd	A fragment of a small vessel's broad orifice. Its broad and low neck transforms smoothly into the shoulder. The orifice area is slanted outward. The clay composition is clean. . It's pink on the inside and brown on the outside. The wall is thin.	Unit 18 Depth:40cm	Wall thickness- 0.4cm
230	Bottom	A tray-type vessel's bottom part fragment. Its bottom is wide and flat. Its flank broadens sideways. The clay composition is clean. On the inside it's painted turquoise and covered with gilded enamel. The bottom was polished and covered with brown engobed coating.	Unit 18 Depth:40cm	Wall thickness- 0.7cm
231	Base	A vase or bowl-type vessel's base fragment. The base is narrow and has a ring-like heel. The clay composition is clean. On the inside there are dark blue circular spots girdled by a stripe of the same colour in the middle with a white painted background. Both sides of the stripe are decorated with black dots. It's covered with transparent enamel. The colour is light pink.	Unit 18 Depth:40cm	Base diameter- 7cm
232	Body	A small vessel body fragment. The wall thickens downward. There is a stripe comprised of thin scratched lines on it. The clay composition is clean. The colour is pink.	Unit 18 Depth:40cm	Wall th.-0.4- 0.6cm
233	Bottom	A plate-type vessel bottom fragment. Its flat bottom thickens toward the middle. On the inside vertical white and blue stripes alternate and connect to the dark blue circle in the middle. On the inside it's decorated with mushroom-like black patterns over white stripes and covered with transparent enamel. The clay composition is clean. Colour is light pink.	Unit 18 Depth:40cm	Wall thickness- 0.7-1.2cm
234	Orifice element	A small salt cellar type vessel's orifice fragment. The broad orifice area opens sideways. On the inside it's covered with green enamel and decorated with two dark green, parallel scratched lines throughout the orifice. The clay composition is clean. The colour is light pink. Wall is thin.	Unit 18 Depth:40cm	Wall thickness- 0.4cm
235	Body	A large household jug's body fragment. The jug has an elongated body and a thin wall. There is a chain-like pattern of two model parallel lines on it. There is sand admixture in the clay composition. The colour is light pink.	Unit 18 Depth:40cm	Wall thickness- 0.8-1cm Distance between stripes- 12.5cm
236	Vessel bottom	A plate type vessel's bottom fragment. The surface is painted blue on both sides with enamel covering black coloured straight and curly line patterns on the inside. The colour is light pink.	Unit 18 Depth:40cm	Wall thickness- 0.6cm
237	Vessel bottom	A tray-type vessel bottom part fragment. Its bottom is wide and flat. On the inside the enamel covers blue petal-like ornaments over straight and spiral-like patterns with scratched lines against a whitish and light blue background. The clay composition is clean. The colour is that of coffee with cream. There is white engobed coating on the bottom.	Unit 18 Depth:40cm	Wall thickness- 0.8-1cm
238	Vessel bottom	A bowl or a deep plate type vessel's body fragment. On the back of the orifice area and the inside it's painted white with natural image patterns on the inside girdled by a blue stripe and covered with enamel. There is white engobed coating on the bottom.	Unit 18 Depth:40cm	Wall thickness- 0.5cm

No.	Type	Description	Unit/ Depth	Dimension
239	Neck	A medium size pitcher narrow orifice's half part. The orifice is round. The low and narrow neck is girdled by a faceted line. The neck smoothly transforms into the shoulder. There is fine sand admixture in the clay composition. The colour is light pink. The wall is thin. There is a trace of soot on the surface.	Unit 18 Depth:40cm	Orifice diam.- 10.5cm Wall thickness- 0.5cm
240	Body	A vessel body fragment. Its surface is corrugated horizontally. The clay composition is clean. The colour is light brown on the outside and pink on the inside.	Unit 18 Depth:40cm	Wall thickness- 0.5cm
241	Handle	A fragment of a narrow and flat handle with a tape-shaped cross section. It descends straight and vertically after being attached to the vessel. The clay composition is clean. The colour is light grey. There is whitish engobed coating on the surface.	Unit 18 Depth:40cm	Cross section width-2cm
242	Handle	A fragment of a handle with a round cross section. It is connected to the vessel vertically. The clay colour is orange and the surface is red.	Unit 18 Depth:40cm	Cross section diam.-2cm
243	Handle	A small vessel handle fragment. Its cross section is tape-shaped. It is connected to the vessel vertically. The clay composition is clean. The colour is pink.	Unit 18 Depth:40cm	Cross section width-1.8cm
244	Body	A medium size vessel body fragment. The wall is thin. There are straight and wavy patterns comprised of scratched parallel lines on it. The clay composition is clean. The colour is dark pink.	Unit 18 Depth:40cm	Wall thickness- 0.5cm
245	Orifice element	A medium size pitcher-type vessel orifice fragment. The orifice area is sharply bent sideways and inclined downward. The orifice area is decorated with stamped chain-like patterns. The orifice transforms directly into a slanting shoulder. The clay composition is clean. The clay colour is grey. The surface colour is light pink.	Unit 18 Depth:40cm	Orifice width- 4cm Wall thickness- 1cm
246	Bottom part	A tray type vessel bottom part fragment. Its bottom is wide and flat. In the middle it's girdled by a black stripe with a white background. The stripe is decorated with white coloured snake-like patterns. There are blue lines on both sides of the black stripe, which are covered with enamel. The clay colour is light pink. There is grey engobed coating on the bottom.	Unit 18 Depth:70cm	
247	Body	A salt cellar-type vessel's body fragment. Its bottom is oval. The body rises in a rounded shape. The orifice is broken. The clay composition is clean. The colour is pink.	Unit 18 Depth:70cm	Wall thickness- 0.7cm Wall th.-0.5cm
248	Neck	A medium size pitcher-type vessel's neck fragment. The narrow orifice area has welt. The low neck smoothly transforms into the shoulder. There is a horizontal facet along the middle of the neck. There is fine sand admixture in the clay composition. The clay colour is grey. The surface colour is pink. The wall is thin.	Unit 18 Depth:70cm	Neck height- 3.5cm Wall thickness- 0.5cm
249	Body	A plate-type vessel's body fragment. Its bottom was oval with the body broadening sideways and upward. It's glazed blue on the inside and outside, with the enamel covering an ornament of green, straight parallel line and natural image patterns on the inside. The wall thickens upward. The colour is pink.	Unit 18 Depth:70cm	Wall thickness- 0.4-0.7cm
250	Handle	A vertically positioned fragment of a handle with a tape-shaped cross section. The clay composition is clean. It belongs to a thin walled vessel. The colour is dark pink.	Unit 18 Depth:70cm	Cross section width-2.7 cm Wall th.- 0.5cm
251	Body	A large, thin walled vessel's body fragment. Its surface is horizontally corrugated. The clay composition is clean. The colour is light pink.	Unit 18 Depth:70cm	Wall thickness- 0.5cm
252	Base	A medium size vessel base fragment. The base is wide and flat. From the base the body opens sideways. The lower part of the body is girdled by two shallow parallel lines. It's corrugated on the inside. There is fine sand admixture in the clay composition. The colour is light pink.	Unit 18 Depth:70cm	Wall thickness- 0.7-1.2cm
253	Base	A vase type vessel base fragment. The base is wide and has a ring like heel. There is a round indent in the middle of the bottom (diameter - 5.5cm). Its surface is painted green, decorated with patterns of scratched, parallel, round and straight short lines and enamelled. There is fine sand admixture in the clay composition. The colour is pink.	Unit 18 Depth:70cm	“----- “
254	Spare part	An iron article element. It's somewhat triangular-shaped.	Unit 18 Depth:70cm	8.5x6cm

No.	Type	Description	Unit/ Depth	Dimension
255	Handle	A fragment of a handle with a tape-shaped cross section. The semi-circular item begins at the orifice area. From the orifice area it descends in semi-circular shape. There is fine sand admixture in the clay composition. The colour is grey on the inside and light pink on the outside.	Unit 18 depth-1	Cross section width-3cm
256	Orifice element	A plate type vessel orifice element fragment. The orifice area is bent sideways. It's faceted between the base and the orifice area. It's painted yellow on the inside, decorated with patterns against the background of dark green straight and semi-circular lines in the orifice area and enamelled. Its bottom is painted yellow. The clay composition is clean. The colour is light pink.	Unit 18 Depth:70cm	
257	Body	A large vessel's body fragment. There is a model chain-like stripe on it. The clay composition is clean. It has a protruding hole (diameter - 0.5cm). The wall is thick. The colour is light pink.	Unit 18 Depth:70cm	Wall thickness- 1cm
258	Handle	A small vessel handle fragment. The orifice is broad. The orifice area is inclined slightly sideways. It transforms directly into the straight body. On the body there is a handle with a tape-shaped cross section descending in semi-circular shape. The wall is thin. The clay composition is clean. The colour is light pink. There are traces of red paint on it.	Unit 18 Depth:70cm	Handle cross section-2cm
259	Bottom part	A medium size plate type vessel's bottom fragment. Its bottom is wide and flat. The body broadens sideways toward the top. The clay composition is clean. It's painted yellow and enamelled on the inside. Its flank is enamelled over black coloured, straight, parallel lines with wavy patterns in between with a green painted background. The bottom is covered with grey and white engobed coating and green coloured parallel line patterns. The clay composition is clean. The colour is light pink.	Unit 18 Depth:70cm	Wall thickness- 0.9cm
260	Body	A small piyale-type vessel's body fragment. The body narrows downward in an oval shape. The wall is thin. There is fine sand admixture in the clay composition. The surface is painted light brown on both sides with blue and black stripes applied on the inside along the orifice area and enamelled. The colour is grey.	Unit 18 Depth:70cm	Wall thickness- 0.4cm
261	Handle	A large pitcher-type vessel handle. Its flat with a tape-shaped cross section. It's attached to the upper part of the vessel. It descends sharply after slanting downward slightly. The clay composition is clean. The colour is dark pink on the inside and mat pink on the outside.	Unit 18 Depth:70cm	Cross section width- 3.8cm
262	Orifice element	A plate type vessel's orifice fragment. The orifice area opens sideways with its tip slightly bending. The surface on the inside is painted green, ornamented with a wide, black stripe and two narrow parallel stripes on both sides and enamelled. Its rear side is painted black and green, and also enamelled. The clay composition is clean. The colour is dark pink.	Unit 18 Depth:70cm	Wall thickness- 0.7cm
263	Nail	The upper part of a large nail made of an iron core. It narrows toward the tip.	Unit 18 Depth:70cm	Length of remaining part- 5cm Cap diameter- 2cm
264	Spare part	An iron item fragment. It's narrow and elongated.	Unit 18 Depth:70cm	4.1x2.2cm
265	Body	A vessel body fragment. There is a model chain-like stripe on it. The clay composition is clean. The clay colour is grey and the surface is dark pink on both sides.	Unit 20 Depth:20- 40cm	Wall thickness- 1cm
266	Handle	A fragment of a handle with a tape-shaped cross section. Its bottom is flat and the surface is convex. The clay composition is clean. The clay colour is grey and the surface colour is pink.	Unit 20 Depth:20- 40cm	Cross section width-2.9cm
267	Handle	A fragment of a stick-like shaped handle with a round cross section. Its bottom was flattened. It's narrow. There is fine sand admixture in the clay composition. The colour is whitish.	Unit 20 Depth:20- 40cm	Cross section diam.-1.5cm
268	Handle	A fragment of a narrow handle with a tape-shaped cross section. The clay composition is clean. The colour is whitish.	Unit 20 Depth:20- 40cm	Cross section width-1.6cm

No.	Type	Description	Unit/ Depth	Dimension
269	Orifice element	A small broad orifice vessel's orifice element fragment. It's roughly made. The orifice area has welt. On the outside it's ornamented with a chain-like pattern below the orifice area. The wall is thin. The clay composition is clean. The colour is dark pink.	Unit 20 Depth:20-40cm	
270	Orifice element	A piyale-type vessel's orifice element fragment. Its broad orifice is round. The body descends straight, transforming immediately into an oval and wide base. The item is of high quality. The clay composition is clean. It's polished on the inside and outside. The colour is light pink.	Unit 22 Depth: 20-40cm	Flank height-3cm Wall thickness-0.8cm
271	Rim	A small boiler-type vessel's orifice fragment. Its broad orifice is slanted inward. Below the orifice area there is an ear-shaped small handle inclined downward. There are traces of soot on it. The wall is thin. The clay composition is clean. The colour is dark pink. There are traces of red paint on the inside.	Unit 22 Depth: 20-40cm	-
272	Body	A body fragment of a small lamp with a convex body. The clay composition is clean. The colour is light pink.	Unit 22 Depth: 20-40cm	Wall thickness-0.5cm
273	Base	A medium size ceramic vessel's base fragment. The body broadens from the base upward. The base is wide and flat. There is gravel, seashell and sand admixture in the clay composition. The colour is light pink.	Unit 22 Depth: 20-40cm	Base diameter-16cm
274	Base	A vase type vessel base fragment. The base is narrow and heeled. From the base the body broadens sideways. The clay colour is light grey and the surface is dark pink with grey plastering on the inside.	Unit 22 Depth: 20-40cm	Wall thickness-0.8cm
275	Body	A fragment of a large household jug body with two parallel model chain-like stripes on it (space in between-10.5cm). There is sand admixture in the clay composition. The colour is light pink. The clay is grey.	Unit 18 Depth:1.2m	Wall thickness-1.4cm
276	Base	A vase type vessel base fragment. The base is narrow with a ring like heel. From the base the body broadens sideways. On the inside it has grey engobed coating with a green paint over it. In the middle it's decorated with black coloured natural patterns. It's covered with transparent enamel. The colour is red. There is red paint on the bottom.	Unit 18 Depth:1.2m	Wall thickness-0.7cm
277	Body	A body fragment of a small vessel with a spherical body. The clay composition is clean. The colour is light pink. The surface is polished and painted red. The body wall is thinning upward.	Unit 18 Depth:1.2m	wall th.-0.5-1cm
278	Body	A small vessel's sphere-shaped body fragment. The clay composition is clean. The colour is light pink.	Unit 18 Depth:1.2m	Wall thickness-0.5cm
279	Fragments	Fragments of a flat and elongated item. Presumably, these were part of a sword blade.	Unit 18 Depth:1.2m	Width-5cm
280	Body	A large vessel's elongated body fragment. The body is wide and flat. From the base the body goes upward. The clay composition is clean. The colour is light pink. Its wall is decorated with patterns on the way up.	Unit 20 Depth:0.7-1.5cm	Base diam.-12.5cm Wall thickness-0.7-1.5cm
281	Base	A vase or bowl-type small vessel base. The base is narrow with a ring like heel. Apparently, the body is convex. It is of high quality. The clay composition is clean. On the inside it's glazed in yellow and light brown colours. The colour is red. The bottom is polished, painted dark brown and enamelled. On the inside there are two traces of some round element (diameter - 0.6cm).	Unit 20 Depth:0.7-1.5cm	
282	Base	A medium size pitcher-type vessel's base fragment. The base is wide and flat. On the bottom the base sides are girdled by a grooved stripe. The bottom is polished. There is seashell and sand admixture in the clay composition. The body is sphere-shaped. The colour is light pink.	Unit 20 Depth:0.7-1.5cm	Base diameter-10cm
283	Base	A small vase or bowl-type pottery vessel's base. The base is narrow with a ring like heel. From the base the body broadens sideways. There is fine sand admixture in the clay composition. On the inside it's decorated with blue natural image patterns with a white painted background, and enamelled. The clay colour is light creamy. There is whitish engobed coating on the bottom.	Unit 20 Depth:0.7-1.5cm	Base diameter-6cm

No.	Type	Description	Unit/ Depth	Dimension
284	Base	A small plate or bowl-type vessel's orifice area fragment. The orifice is broad. It transforms directly into the body. The upper part of the body is painted white on the inside and girdled by a wide stripe of blue coloured natural images. The area below the stripe is painted dark green and decorated with black coloured vegetational image patterns. The whole composition is covered with transparent enamel. The wall is thin. The clay colour is pink. The rear side is painted red.	Unit 20 Depth:0.7-1.5cm	wall th.- 0.4cm
285	Base	A medium size pitcher-type vessel's orifice element fragment. The orifice is broad. The orifice area is thick and bent sideways. The orifice area is girdled by a protruding wave-like stripe. The clay colour is grey and the surface is light pink. The orifice area transforms directly into a wide and low neck.	Unit 20 Depth:0.7-1.5cm	Orifice width-3.4cm Vessel wall thickness-0.6cm
286	Base	A small plate-type, shallow vessel's orifice fragment. The orifice is slightly bent sideways. The wall is thin. On the inside two parallel pink lines girdle the orifice area and the part shifting into the oval base. There are grey coloured patterns between the stripes. On inside the base and the rear side of the orifice area outside were painted white (over white engobed coating) and enamelled. White engobed coating on the bottom.	Unit 20 Depth:0.7-1.5cm	Orifice width-1.8cm Wall thickness-0.3cm
287	Base	A small vessel body fragment. The orifice area is smooth and slanted inward. It transforms directly into the body. There is fine sand admixture in the clay composition. The colour is light pink. The surface was painted white on both sides with blue geometrical and natural patterns applied on the inside and enamelled.	Unit 20 Depth:0.7-1.5cm	Wall thickness-0.6cm
288	Orifice element	A pitcher orifice element fragment. The orifice is broad. It's bent, opening sideways. The neck is low and wide. The clay colour is grey and the surface is pink.	Unit 20 Depth:0.7-1.5cm	Orifice width-4cm Wall thickness-1cm
289	Body	A small vase-type vessel body fragment. The orifice is broad. The orifice area opens sideways slightly. Its flank broadens and transforms into a wide	Unit 20 Depth:0.7-1.5cm	Flank height - 2cm
290	Bullion	Iron bullions (two pieces).	Unit 20 Depth:0.7-1.5cm	
291	Base	A medium size pitcher-type vessel base fragment. The base is wide and flat. The body broadens upward. The clay composition is clean. The colour is light pink.	Unit 20 Depth:0.7-1.5cm	Wall thickness-0.8cm
292	Orifice element	A narrow orifice vessel's orifice element fragment. The orifice area has welt. There is a thin groove throughout the orifice area. The low neck smoothly transforms into the shoulder. The surface is enamelled. The colour is light pink.	Unit 20 Depth:0.7-1.5cm	Wall thickness-0.5cm
293	Salt cellar	A salt cellar-type vessel fragment. The base is flat. Its flanks broaden sideways. The colour is light pink. On the bottom there are traces of enamel covering blue stripe and natural images on a white background.. There is white engobed coating on the inside.	Unit 20 Depth:0.7-1.5cm	Orifice diam.-7cm Wall th.-0.6cm
294	Body	Small boiler body fragment. The orifice area opens sideways. The body narrows downward. There is a wide handle with a tape-shaped cross section on it. The handle connects the vessel shoulder and the lower part of the body. The neck is low. The wall is thin. There is sand admixture in the clay composition. There are straight and askew notched patterns covering the handle from top to bottom. The colour is light brown. There are traces of significant burning on the inside and below the handle. The vessel is handmade.	Unit 20 Depth:0.7-1.5cm	Handle width-4.5cm Wall thickness-0.5cm
295	Handle	A large pitcher-type vessel's handle fragment. It's flat with a tape-shaped cross section. It is attached to the vessel vertically. The wall is thin. The clay composition is clean. There are grooves and facets along the handle. The surface is polished. The colour is whitish.	Unit 20 Depth:0.7-1.5cm	Cross section width-4.8cm Thickness-2.2cm Vessel wall thickness-0.5cm
296	Orifice element	A broad orifice vessel's orifice element fragment. The orifice area is wide and thick. Below the orifice area there is a stamped chain-like pattern. Its broad and low neck transforms smoothly into the shoulder. There is a covered hole over the orifice area (diam.-1cm). There is sand admixture in the clay composition. The clay colour is grey and the surface is light pink on both sides. The wall is thick.	Unit 20 Depth:0.7-1.5cm	Orifice width-4.2cm Vessel wall thickness-1.2cm

No.	Type	Description	Unit/ Depth	Dimension
297		A small broad orifice piyale's orifice element fragment. There is a thin groove on the orifice area. The body narrows downward in the oval shape. The colour is pink. The wall is thin.	Unit 20 Depth:0.7-1.5cm	Orifice diameter-3.5cm Wall th.-0.4cm
298	Handle	A large vessel handle's upper part. Its cross section is tape-shaped. Its upper end is comprised of the orifice area rear side of a narrow orifice vessel. Its extends horizontally for 6cm and then apparently goes down. Although the handle is wide and thick, the vessel wall is thin. There is fine sand admixture in the clay composition. The surface is polished. The colour is whitish.	Unit 20 Depth:0.7-1.5cm	Cross section width-4.7cm Vessel- 2.2cm Orifice diameter-4cm Vessel wall thickness-0.3cm
299	Base	A medium size pitcher-type vessel base fragment. The base is wide, flat and thick. From the base the body is inclined sideway and upward. There is fine sand admixture in the clay composition. Colour is whitish.	Unit 20 Depth:0.7-1.5cm	Base d.- 10cm Thickness-1.5cm
300	Base	The vessel's base is narrow and has a ring-like heel. The body is inclined sideway and upward. The wall is thick. The clay composition is clean. The clay colour is red. On the inside grey engobed coating underlies a white-painted background and black coloured geometrical and natural patterns covered with enamel. Brown enamel traces remained on the bottom.	Unit 20 Depth:0.7-1.5cm	Base diameter-7cm Wall thickness-1cm
301	Base	A vase type vessel base fragment. The base is narrow and has a ring-like heel. From the base the body is inclined sideway and upward. The clay composition is clean. The colour is red. On the inside white engobed coating underlies white paint covered with enamel. The bottom is polished.	Unit 20 Depth:0.7-1.5cm	Base diam.-6.5cm Wall thickness-0.4cm
302	Body	A deep plate-type vessel body fragment. The orifice area is bent sideway. The body is oval. There is fine sand admixture in the clay composition. The surface is painted white on both sides. On the inside it's decorated with straight and natural patterns and enamelled. The bottom is also decorated with natural patterns. The clay is white.	Unit 20 Depth:0.7-1.5cm	Orifice width-2.5cm Wall thickness-0.5cm
303	Base	A vase type vessel base. The base is narrow and has a ring-like heel. Its body broadens sideways. On the inside it's painted in mustard colour and enamelled. On the inside of the base there is a scratched pattern resembling an Arabic alphabet letter. The scratched pattern is filled with brown paint. Askew notches girdle the base underneath. The clay composition is clean. The bottom part colour is pink.	Unit 20 Depth:0.7-1.5cm	Base diameter-6.5cm Vessel wall thickness-1cm
304	Horn	A small horned animal's horn fragment. Its lower part was cut off and the middle part crumbled.	Unit 20 Depth:0.7-1.5cm	Cross section dimensions-2x1.5cm
305	Tool	A cobblestone fragment. Its bottom is flat and the tip is round. Presumably, it was used as a grinder or a hammering tool.	Unit 20 Depth:0.7-1.5cm	Width- 5.5cm Vessel-4cm
306	Jug	A medium size jug-type vessel's fragments. Its body is sphere-shaped. The narrow and low neck is corrugated. The orifice area slightly broadens and bends sideway. In the back there is a narrow handle with a tape-shaped cross section that connects the orifice area and the shoulder. The middle of the neck is decorated with short notched lines. The lower part of the shoulder is girdled by a thin scratched line. There is fine sand admixture in the clay composition. The colour is whitish. The surface is polished. The wall is thin. The base is flat.	Unit 20 Depth:0.7-1.5cm	Orifice diam.-6.5cm Neck height-5cm Handle width-2cm Wall th.-0.3cm
307	Body	Fragments of a vase-type vessel body. The base is narrow and has a heel. The body broadens sideway. The clay composition is clean. The orifice area is decorated with blue natural patterns between green lines. On the inside the enamel covers mat blue flower images against a white background. The clay colour is pink. White engobed coating on bottom.	Unit 20 Depth:1m	Wall thickness-0.8cm
308	Orifice element	A medium size pitcher-type vessel's orifice element fragment. The orifice area broadens in a funnel shape. The orifice area is smooth. Below the orifice area there is a roughly modelled chain-like stripe. The low and broad neck smoothly transforms into the shoulder. The surface is polished. The clay colour is grey and the surface is pink.	Unit 20 Depth:1m	Orifice width-1.7cm Wall th.-0.5cm

No.	Type	Description	Unit/ Depth	Dimension
309	Rim	A plate type vessel's orifice element fragment. The orifice element rises, bending sideways. The orifice part adjacent to the body is faceted. On the inside the enamel covers straight green lines with bindweed image patterns in between. The back of the orifice area is girdled by a green stripe. The clay colour is light pink. Whitish engobed coating on bottom.	Unit 20 Depth:1m	Orifice width-2.3cm Wall th.- 0.7cm
310	Rim	A plate-type vessel orifice fragment. The orifice area was convex and the edge was flat. The clay composition is clean. The surface is covered with enamel over thin, straight and wavy line patterns and black stripes against a blue coloured background. The bottom is covered with white and grey coloured engobed coating. The clay colour is red.	Unit 20 Depth:1m	Wall thickness-1-1.4cm
311	Body	A bowl-type vessel body fragment. The body is spherical. The wall is thick. The clay composition is clean. The surface is painted white on both sides. The surface is enamelled over black and blue coloured geometrical and natural image patterns. The clay colour is light pink.	Unit 20 Depth:1m	Wall thickness-0.8cm
312	Body	A bowl-type vessel body fragment. The body is convex. The wall is thick. Its rear side and inside are painted dark yellow and enamelled. Its upper part is girdled by two thin, scratched, parallel lines on the inside. The wall thins upward.	Unit 20 Depth:1m	Wall thickness-0.7-0.9cm
313	Base	A medium size vessel base half part. The base is wide and flat. The surface is not smooth. It's thick. From the base the body broadens sideways and upward. It's roughly made. The clay is dense. The colour is light pink.	Unit 24 Depth:60cm	Wall th.-1cm base diam.-11cm base th.-2.2cm
314	Body	A household vessel body fragment. The body is girdled by a model chain-like stripe. There is sand admixture in the clay composition. The colour is grey on the inside and light pink on the outside.	Unit 24 Depth:60cm	Wall thickness-1cm
315	Handle	A small ceramic vessel's handle fragment. Its cross section is tape-shaped. It is attached to the vessel vertically. The colour is dark pink.	Unit 24 Depth:60cm	Cross section width-2.7cm
316	Base	Vase type vessel base fragment. The base is narrow and has a ring-like heel. On inside the enamel covers blue coloured natural image patterns with a white background. Clay composition is clean. Colour is light pink.	Unit 24 Depth:80-90cm	Wall thickness-0.5cm
317	Orifice element	A small pitcher orifice element fragment. The orifice area is wide and funnel-shaped. It has welt. The wall is thin. The low and broad neck smoothly transforms into the shoulder. Clay is dense. Colour is pink.	Unit 24 Depth:80-90cm	Wall thickness-0.3cm
318	Handle	Half part of a handle with a tape-shaped cross section. It goes down from the orifice area. Its bottom is flat and the surface is convex. The clay colour is grey and the surface is light pink.	Unit 22 Depth:90cm	Cross section width-3.3cm
319	Body	A small plate type vessel body fragment. The orifice area is bent sideways. There is a facet between the orifice area and the oval base. On the inside the enamel covers blue spot patterns with a white background. The upper part of its bottom is painted white and enamelled, while the lower part is covered with white engobed coating. The clay composition is clean. The clay colour is whitish.	Unit 22 Depth:90cm	Wall thickness-0.5cm
320	Base and orifice	A vase type vessel base half part. The base is wide and has a ring-like heel. The wall is thick. The clay colour is red. On the inside and the heel outside it's enamelled over creamy paint with three green, scratched parallel lines girdling the middle on the inside. The bottom of the base is covered with engobed coating in light pea yellow colour.	Unit 20 Depth:1.2cm	Base diam.-9.5cm Vessel wall thickness-1cm
321	Body	A plate or bowl-type vessel's body fragment. There is fine sand admixture in the clay composition. On inside and outside the enamel covers flower images framed with black coloured parallel lines on a white painted background. The flower petals are blue.	Unit 20 Depth:1.2cm	Wall thickness-0.5cm
322	Rim	A small pitcher-type vessel's orifice fragment. The orifice area is bent sideways. The orifice is broad. Its broad and low neck transforms smoothly into the shoulder. There is sand admixture in the clay composition. The colour is light pink.	Unit 20 Depth:1.2cm	Orifice width-1.8cm Wall thickness-0.6cm
323	Handle	Half part of a handle with a tape-shaped cross section. The orifice is narrow. The handle connects the orifice area with the body. The clay is dense. The colour is light pink.	Unit 20 Depth:1.2cm	Cross section width-3.9cm
324	Body	A bowl-type ceramic vessel body fragment. Its thinned orifice area is slanted slightly sideways. There is a protruding stripe along the neck. The body descends straight down. The surface on both sides is enamelled over blue coloured natural patterns on a white painted background, and the orifice area is gridled by stripes on both sides. Clay colour is pink.	Unit 20 Depth:1.2cm	Wall thickness-0.5cm

No.	Type	Description	Unit/ Depth	Dimension
325	Handle	A small vessel handle fragment. Its handle with a tape shaped cross section is attached vertically in a semi-circular shape. The clay composition is clean. The wall is thin. The clay colour is red. The surface is painted yellow and green, and enamelled.	Unit 20 Depth: 1.2cm	
326	Tool	A four-cornered working tool made of a plane cobblestone. Perhaps a grinder.	Unit 20 Depth: 1.2cm	11x6x6.8cm
327	Base	A medium size pitcher's bottom half part. The base is wide and flat. The body broadens upward. There is sand admixture in the clay composition. The surface is polished. The colour is dark pink.	Unit 20 Depth: 1.2cm	Base d.- 11cm Wall th.-0.7cm
328	Base	A vase-type vessel base fragment. The base is narrow and has a ring-like heel. There is fine sand admixture in the clay composition. On the inside it's enamelled over black, filled notched curved line patterns with a dark green painted background. The colour is whitish.	Unit 20 Depth: 1.2cm	Base thickness-9cm Wall thickness-1.2cm
329	Body	Plate type vessel body fragment. The orifice area is bent sideways. There is a facet between the orifice area and the body. The body is bent downward at a slant and transforms into the base. On the inside white engobed coating underlies light blue paint covered with transparent enamel. The facet and the adjacent area of the orifice shifting into the body are girdled by black lines. The clay composition is clean. The clay colour is orange. There is red paint on its rear side. The wall is thin.	Unit 20 Depth: 1.2cm	Wall thickness-0.3cm
330	Body	Body fragments of a small vessel with a spheric body. The wall is thin. The clay composition is clean. The surface is polished. Colour is light pink. There is a handle remainder on it. Traces of soot in some parts.	Unit 20 Depth: 1.2cm	Wall thickness-0.4cm
331	Base	A plate-type vessel body fragment. The orifice is broad. The orifice area is bent sideways. The body broadens sideways. The base is oval. The clay composition is clean. The colour is light pink on the inside and in the back.	Unit 20 Depth: 1.2cm	Wall thickness-0.5cm
332	Base	A small pitcher base. The base is flat. The body broadens upward. The wall is thin. There is sand admixture in the clay composition. The colour is pink. The surface is significantly burnt.	Unit 20 Depth: 1.2cm	Base diam.-7.8cm Wall thickness-0.3cm
333	Base	A vase-type vessel base's half part. The body broadens sideways. The wall thins toward the tip. The base is narrow and has a ring-like heel. The clay composition is clean. The clay colour is light pink. On the inside it's painted in mustard colour and enamelled. The bottom is polished.	Unit 20 Depth: 1.2cm	Base diam.-7cm Wall th.-0.7-1.5cm
334	Base	A vase-type vessel's base fragments. The base is wide, thick and has a ring like heel. The clay composition is clean. On the inside there are black lines girdling the centre with a green painted background. There are alternating black wavy and straight lines within the frame. The clay colour is pink. There is creamy coloured engobed coating on the bottom.	Unit 20 Depth: 1.2cm	Wall thickness-1.2cm
335	Base	A vase-type vessel base. The base is narrow with a heel. It's thick. On the inside it's ornamented with green spots and rhombic patterns on a yellow background and enamelled. The clay colour is light pink. The bottom is whitish.	Unit 20 Depth: 1.2cm	Wall thickness-1.2cm
336	Orifice element	A large pitcher's orifice element fragment. The orifice area is wide and smooth. It belongs to a broad orifice vessel. The orifice area is ornamented with protuberant chain-like patterns. The low and broad neck smoothly transforms into the shoulder. There are elongated askew notched lines on the orifice area. There is sand admixture in the clay composition. The colour is pink.	Unit 11 Depth:20-40cm	Orifice width-3.5cm Wall thickness-1.2cm
337	Base	A plate or tray-type vessel base fragment. The base is slightly oval. The clay colour is pink. The surface has greyish engobed coating on both sides under black natural patterns on the inside against a blue-painted background covered with enamel.	Unit 11 Depth:20-40cm	Wall thickness-0.9cm
338	Base	A tray-type vessel base fragment. The base is wide and flat. The orifice area was smoothened. Two thin black parallel lines girdle the vessel base on the front of the orifice area. The surface is painted white on both sides and then ornamented with blue vegetational patterns and enamelled. There is fine sand admixture in the clay composition. The colour is light pink.	Unit 11 Depth:20-40cm	Wall thickness-0.6cm

No.	Type	Description	Unit/ Depth	Dimension
339	Grindstone	A grindstone made of a processed cobblestone. It has a four-cornered and narrow shape. Half of it is broken.	*Unit 11 Depth:20-40cm	1.5x1.5cm
340	Base	A vase type vessel base half part. The base is narrow and has a ring-like heel. The body broadens sideways. The surface has white engobed coating on both sides underlying blue natural patterns on a white background covered with enamel. There is a circle in the middle of the composition. It's girdled by interconnected flower petal images. The wall is thick. The colour is light pink.	Unit 11 Depth:20-40cm	Base diam.- 8.5cm Wall th.- 1cm
341	Base	Plate-type vessel base fragment. The base is wide and has a ring-like heel. The clay colour is white. Bottom and inside were painted light blue, decorated with natural images girdled by black parallel lines and enamelled.	Unit 11 Depth:20-40cm	Base diam.- 12cm Wall th.- 0.7cm
342	Base	A tray-type vessel base fragment. The surface is painted white on both sides with the middle of the inside section framed by three black parallel lines, with each line ornamented with blue stripes on both sides. The space between the stripes is decorated with black dots and enamelled. There is a trace of a small round protrusion on the surface. There is sand admixture in the clay composition. The colour is light pink.	Unit 11 Depth:20-40cm	Wall thickness- 0.7-1cm
343	Neck	A large household jug neck fragment. The low and wide neck smoothly transforms into the shoulder. There is sand admixture in the clay composition. The wall is thick. There is a protruding stripe on the shoulder. The colour is pink.	Unit 11 Depth:20-40cm	Wall thickness- 1.2cm
344	Handle	Half part of a handle with a tape-shaped cross section. One of its ends is attached to the vessel orifice area. It then descends vertically. There is gravel and sand admixture in the clay composition. The clay colour is dark and the surface colour is pink. It's a narrow orifice vessel.	Unit 11 Depth:20-40cm	Cross section width-3cm
345	Body	A bowl-type vessel body fragment. The body is shaped like a sphere. The wall thins upward. The clay colour is red. It was painted yellow and green on the inside and enamelled. Its thinned orifice area is inclined inward. There are traces of burning on its rear side.	Unit 11 Depth:20-40cm	Wall thickness- 0.3-1.2cm
346	Body	Kheyra-type vessel body fragment. The orifice area is bent sideways. The orifice area is smooth. It has a slanting flank. There is a facet between the orifice area and the flank. The flank transforms into the oval base. On the inside it's painted green and ornamented with black lines. There are wavy line patterns between the lines. I	Unit 11 Depth:20-40cm	Orifice width- 2.2cm Wall th.- 0.8cm
347	Base	A vase type vessel base fragment. The base is narrow and has a ring-like heel. The clay colour is whitish. On the inside it's painted white with a black circle in the middle with black and blue coloured natural images around it, and enamelled.	Unit 11 Depth:20-40cm	Wall thickness- 0.8cm
348	Orifice element	A plate type ceramic vessel's orifice element fragment. Its broad orifice is bent sideways. A facet separates the orifice area and the base. The wall is thin. The colour is dark pink. On the inside it's painted dark brown and enamelled.	Unit 11 Depth:20-40cm	Orifice width- 3.5cm Wall thickness-4cm
349	Pumice stone	A pumice stone. It's planed on the edge. It's crescent-shaped.	Unit 11 Depth:20-40cm	Length- 12cm Width- 2.2cm
350	Bullion	An iron bullion. It's rhombic-shaped.	Unit 11 Depth:20-40cm	9x6cm
351	Orifice element	A narrow orifice pitcher or decanter-type vessel's orifice element fragment. The orifice area was flat and bent sideways. The clay composition is clean. The colour is whitish.	Unit 11 Depth:20-40cm	Orifice diam.- 6.5cm Wall th.- 0.7cm
352	Body	A small biconic vessel's body fragment. On its surface there are two thin parallel stripes comprised of carved patterns. Its lower part sharply narrows. There is a handle remainder left on it. The wall is thin. The clay composition is clean. The colour is whitish.	Unit 11 Depth:20-40cm	Wall thickness- 0.4cm
353	Body	A boiler-type vessel body fragment. The orifice is broad. It is slightly bent sideways. The orifice area is smooth. Below the orifice area there is a remainder of a four-cornered handle attached to the vessel horizontally. There is sand admixture in the clay composition. The colour is brown. It's covered with soot on the inside.	Unit 11 Depth:20-40cm	Cross section width-2.5cm

No.	Type	Description	Unit/ Depth	Dimension
354	Body	A vessel body fragment. It has a protruding hole on it. The clay composition is clean. The colour is red.	Unit 11 Depth:20-40cm	Wall th.-0.5cm Hole d.-.5cm
355	Lamp	Lamp body and spout fragments. The body is sphere-shaped. The base is narrow and flat. The spout narrows toward the tip. It has a split on the tip. The clay colour is dark pink.	Unit 11 Depth:20-40cm	Spout diam.-3cm Vessel wall thickness-0.5cm
356	Handle	A large vessel handle half part. Its cross section is round. It is connected to the vessel horizontally. Perhaps, it is a churn handle. There is sand admixture in the clay composition. The colour is red.	Unit 11 Depth:20-40cm	Cross section diam.-3.8cm
357		Large vessel handle's upper part. The handle is wide and has a tape-shaped cross section. There is a groove along the middle of the handle. Its end is attached to the vessel's narrow orifice area. The clay composition is clean. The colour is greyish brown.	Unit 11 Depth:20-40cm	Cross section width-4.2cm Thickness-2cm
358	Body	A plate-type vessel body fragment. The orifice area is bent sideways. Its slanting flank transforms into a flat and wide base. There is a facet between the orifice area and the flank. On the inside enamel covers six thin black, parallel lines with one thick line in middle on a green-painted background. The colour is light pink.	Unit 11 Depth:20-40cm	Orifice width-2.8cm Wall thickness-1cm
359	Base	A small salt cellar-type vessel base half-part. The base is narrow and has a ring-like heel. The body rises, broadening sideways. On the inside enamel covers a blue girdling circle with a white-painted background. There are upward ray-like protrusions above the circle. The space in between is decorated with black-coloured patterns. The colour is light pink. There is a trace of white enamel on the bottom.	Unit 11 Depth:20-40cm	Base diam.-5cm all thickness-0.4cm
360	Orifice element	The orifice element fragment of a vessel with a funnel-shaped orifice. Its broad and low neck transforms smoothly into the shoulder. The orifice area has welt. The wall is thin. The colour is red.	Unit 11 Depth:20-40cm	Wall thickness-0.4cm
361	Grinder	An article made of a reddish-coloured tuff stone. Its has	Unit 11 Depth:20-40cm	6x4.2cm
362	Brick	A half part of a baked brick. It's four-cornered and narrow.	Unit 11 Depth:20-40cm	6x4.5cm
363	Dopu	A small dopu. Its round orifice is somewhat wide. Its low neck transforms into a sphere-shaped body. The base is flat. There is sand admixture in the clay composition. The colour is pink. The surface is enamelled.	Unit 11 Depth:20-40cm	Orifice diam.-8.5cm Stock diam.-14cm Neck height-2cm Base diam.-8cm Height-9.5cm
364	Body	A bowl-type vessel body fragment. The orifice area is smooth. It transforms directly into the body. There is white engobed coating on both sides of the surface underlying, blue-painted background and black coloured natural image patterns framed with black lines in the orifice area and below it, and covered with enamel. The clay colour is light pink.	Unit 11 Depth:20-40cm	Wall thickness-0.5cm
365	Orifice element	An orifice element fragment of a vessel with a straight and low neck. The orifice, which had welt, is bent sideways. Its neck smoothly transforms into the shoulder. There is horizontal corrugation over the neck. The wall is thin. The colour is light pink.	Unit 11 Depth:20-40cm	Neck height-2.5cm Wall thickness-0.3cm
366	Base	A plate-type vessel base fragment. The base is wide and slightly oval. On the inside enamel covers a white-painted background with black lines framing blue stripes and spots in the middle. There are also patterns comprised of black-coloured dots.	Unit 11 Depth:20-40cm	Wall thickness-0.7-1cm
367	Body	A medium size vessel body fragment. The body is spherical. There is horizontal corrugation on it. The wall is thin.	Unit 11 Depth:20-40cm	Wall thickness-0.5cm
368	Body	A thick walled vessel body's plain fragment. There is a trace of covered holes on it. There is an iron core stuck in one of the holes. The clay composition is clean. The clay colour is grey and the surface is light pink. There is a slight horizontal groove on it.	Unit 11 Depth:20-40cm	Wall thickness-1.2cm
369	Base	A bowl or vase-type vessel base. The base is wide and has a ring-like heel. On the inside the enamel covers black coloured natural image patterns on a blue-painted background. The clay colour is light pink.	Unit 11 Depth:20-40cm	Base diameter-9.7cm

No.	Type	Description	Unit/ Depth	Dimension
370	Base	A plate-type small vessel base. The base is slightly oval. Its flank rises and is inclined inward. The surface is painted white on both sides with two black stripes framing blue coloured natural patterns in the middle of the inside section, and enamelled. The clay is of creamy colour.	Unit 11 Depth:20-40cm	Wall thickness-0.7cm
371	Orifice element	An orifice element fragment of a pitcher-type vessel with a broad orifice. The orifice area is convex. There are model chain-like patterns along the bottom. The clay composition is clean. The clay colour is grey and the surface is pink.	Unit 11 Depth:20-40cm	Orifice width-4.5cm
372	Base	A vase or bowl-type vessel base. The base is narrow and has a ring-like heel. From the base the body broadens sideway and upward. The clay colour is pink. The wall is thick. There are traces of yellow, green and creamy coloured enamel on the inside.	Unit 11 Depth:20-40cm	Base diameter-7cm Wall thickness-1.2cm
373	Handle	A small vessel handle fragment. It is convex with a tape-shaped cross section. It is attached to the vessel vertically. There is sand admixture in the clay composition. The colour is red.	Unit 11 Depth:20-40cm	Cross section width-2.2cm
374		A tiny vessel's handle fragment. It's flat with a tape-shaped cross section. It is connected to the vessel vertically. The clay composition is clean. The clay colour is whitish.	Unit 11 Depth:20-40cm	Cross section width-1.5cm
375	Body	A small vessel body fragment. The body is sphere-shaped. Perhaps, it is a lamp body. There is a trace of a handle with a tape-shaped cross section and a spout with a round cross section. The clay colour is red. The surface is painted blue and enamelled	Unit 11 Depth:20-40cm	Wall th.- 0.5cm Handle cross section- 2.3cm Spout cross sect. diam.-2cm
376	Handle	A small vessel handle half part. Its cross section is tape-shaped. It's attached to the vessel vertically in a semi-circular shape. There is a groove along the middle of the handle. The colour is whitish.	Unit 11 Depth:20-40cm	Cross section width-1.8cm
377	Article	A fragment of an article with a pointed tip made of an iron plate. Both ends were flat, narrowing toward the tip.	Unit 11 Depth:20-40cm	Width- 3.9cm
378	Handle	A medium size vessel handle fragment. It's narrow with a tape-shaped cross section. There is a groove along the middle of the handle. It is connected to the vessel vertically. The colour is pink.	Unit 6 Depth:1cm	Cross section width-3.2cm Thickness-1.5cm
379	Body	A small vessel body fragment. The body is convex. There is a flat handle with a tape-shaped cross section vertically connected to the vessel. The wall is thin. The clay composition is clean. The clay colour is light creamy. The surface is polished and painted red. Perhaps, it was a lamp.	Unit 6 Depth:1cm	Handle cross section width-1.5cm Wall thickness-0.5cm
380	Body	A tray-type vessel edge fragment. It's flat. The edge is smooth. The clay colour is grey. The surface is painted blue on both sides and enamelled.	Unit 6 Depth:1cm	Wall thickness-0.5cm
381	Bowl	A large bowl-type vessel's fragments. The body is convex. Although its low neck is bent sideway, the orifice area is slightly slanted inward. The orifice area is smooth. The base is narrow and has a ring-like heel. From the base upward the body broadens sideways and rises. The upper part of the outside surface and the entire inside section is painted white and enamelled. The orifice area is girdled by a green stripe on the outside. There are two thin stripes on the body. The space between the stripes is ornamented vertically with alternating green and blue patterns resembling a plane tree. There is another green line girdling the vessel lower part	Unit 6 Depth:90cm	Base diameter-10cm Neck height-4cm Wall thickness- 0.5-1cm
382	Handle	A boiler-type vessel handle. It's wide with a tape-shaped cross section. The hook-shaped item was connected to the vessel vertically. The wall is thick. There is significant sand admixture in the clay composition. The colour is light pink. There are traces of soot and burning on it.	Unit 6 Depth:90cm	Handle diameter-4cm Wall thickness-1cm
383	Orifice element	A small broad orifice vessel's orifice element fragment. The orifice area is flat. The clay composition is clean. The clay colour is grey and the surface is light pink.	Unit 6 Depth:90cm	Orifice width-1.7cm Vessel wall thickness-0.5cm

No.	Type	Description	Unit/ Depth	Dimension
384	Base	A tray-type vessel base fragment. The base is wide and flat. The clay composition is clean. The colour is light pink. On the inside the middle of the vessel is girdled by a stripe of black lines. Inside the stripe there are snake-like images and below the stripe there are patterns resembling a rodent. The stripe lines and snake images were painted green and enamelled. Perhaps, a flower image could be seen instead of a rodent if the vessel is viewed in its entirety.	Unit 6 Depth:90cm	Wall thickness-0.7cm
385	Body	A vessel body fragment. There is a protuberant hole over it. There is a carved elongated indent on the rear side of the hole. The area around the hole and the indent is painted in a dark colour and enamelled. On the inside it's painted green, ornamented with black lines and also enamelled. The clay composition is clean. The colour is light pink.	Unit 6 Depth:90cm	Wall thickness-0.7cm Hole diameter-0.3cm
386	Base	A vase-type vessel base fragment. The base is wide and flat. From the base upward the body rises upright. The base's wall is thick. On the inside it's painted green and enamelled. On the outside the flank is painted yellow and green, ornamented with black straight and wavy lines, and enamelled. There is white engobed coating on the bottom.	Unit 6 Depth:90cm	Wall thickness-0.8cm Base wall thickness-1.2cm
387	Handle	A handle with a tape-shaped cross section. It is connected to the vessel vertically. There is a groove along the middle of the handle. It's arch-shaped. The clay composition is clean. The colour is light pink.	Unit 6 Depth:90cm	Cross section width-2.3cm
388	Base	A vase type vessel base. The base is narrow and flat. On the inside enamel covers black spiral-like lines framing a black dotted pattern in the middle with a blue painted background. The clay composition is clean. The colour is light pink.	Unit 6 Depth:90cm	Diameter-6cm
389	Handle	A large vessel handle fragment. It's wide and flat with a tape-shaped cross section. There is a groove along the middle of the handle. It is connected to the vessel vertically. The colour is whitish.	Unit 6 Depth:90cm	Cross section width-4.5cm
390	Orifice element	A small broad orifice vessel's orifice element fragment. The orifice area has welt. The wall is thin. There is sand admixture in the clay composition. The colour is brown. The surface is covered with traces of burning.	Unit 6 Depth:90cm	Base diameter-0.5cm
391	Base	A vase-type vessel base. The base is narrow and has a ring-like heel. The clay composition is clean. The clay colour is light pink. There is white engobed coating on the inside. The bottom of the base is ornamented with blue and black spot patterns on a white-painted background, and enamelled.	Unit 6 Depth:90cm	Base diameter-6.2cm
392	Enamelled plate	An enamelled plate fragment. On the inside transparent enamel covers green paint. Black concentric and wavy patterns were applied over the enamel. The orifice area opens widely sideways. It was made of red coloured, well baked clay with clean composition.	Unit 6 Depth:90cm	Wall thickness-0.7cm
393	Enamelled vase base	An enamelled vase bottom. It has a heel. It was made on a potter's wheel using well baked, pink clay with clean composition. On the inside there is an element of a natural image pattern with a dark blue painted background. The surface is polished.	Unit 6 Depth:90cm	Wall thickness-1cm
394	Enamelled plate	An enamelled vessel fragment with white, brown and blue natural image elements on the inside. The outside was painted white. It was made of red coloured, well baked clay with clean composition.	Unit 6 Depth:90cm	Wall thickness-0.7cm
395	Enamelled plate	A fragment of a vessel with transparent enamel covering pale green paint on the inside. Red coloured, it's made of well baked, clean composition clay. It was made on a potter's wheel.	Unit 6 Depth:90cm	Wall thickness-1cm
396	Enamelled bowl	A fragment of an enamelled bowl with a biconic body. On the inside there is transparent enamel covering light green paint. The colour is red. It was made of well baked clay with clean composition.	Unit 6 Depth:90cm	Wall thickness-0.6cm
397	Cup	A neck fragment of a cup made of well baked, white clay with clean composition. The orifice area is bent inward. Presumably, it had a narrow neck.	Unit 6 Depth:90cm	Wall thickness-0.4cm
398	Handle	A fragment of a handle with a round cross section. It belongs to a thin walled vessel. It's made of slightly baked, red clay with sand admixture.	Unit 6 Depth:90cm	Wall thickness-0.6cm
399	Handle	A fragment of a cup or crock-type ceramic vessel handle with a tape-shaped cross section. The handle connected the orifice area with the body. It's made of brown coloured, slightly baked clay with sand admixture.	Unit 6 Depth:90cm	Width-3cm

No.	Type	Description	Unit/ Depth	Dimension
400	Orifice element	A flagon-type vessel orifice element. The orifice is narrow. The orifice area has welt. The narrow neck transforms directly into the shoulder. There is a remainder of a handle over the neck. The area of the neck shifting into the shoulder is girdled by a thin, scratched parallel line. There is fine sand admixture in the clay composition. The colour is whitish. The wall is thin.	Unit 13 Depth: 80cm	Orifice diam. outside-4.8cm inside-3cm Neck height-5cm Wall thickness-0.4cm
401	Body	A plate-type vessel body fragment. The base is wide and flat. From the base the body expands sideways and slightly upward. There is a facet on the outside of the body area shifting into the base. On the outside the vessel body is painted light blue and enamelled. The clay is clean. The colour is light pink. There is light creamy engobed coating on the bottom.	Unit 13 Depth: 80cm	Wall thickness-0.7cm
402	Base	A tray-type vessel base fragment. The base is wide and flat. The clay colour is red. The body broadens sideways. On the inside it's painted white with blue and black stripe patterns respectively on the edge and in the middle.	Unit 13 Depth: 80cm	Wall thickness-0.5-0.9cm
403	Stock	A large vessel body's lower part fragment. The base is wide and flat. From the base the body broadens sideways and upward. The body is horizontally corrugated. The surface is not smooth. There is sand admixture in the clay composition. The colour is light pink.	Unit 11 Depth:1m	Base diameter-11cm Wall thickness-0.5cm
404	Base	A vase type vessel base. The base is narrow with a ring-like heel. The body broadens sideways. The clay composition is clean. The colour is red. On the inside it's painted dark brown and enamelled. There are traces of two items left upon a line drawn in the middle. The wall is thin.	Unit 11 Depth:1m	Base diameter-6cm Wall thickness.-0.5cm
405	Orifice element	A pitcher-type broad orifice vessel's orifice element fragment. The orifice is wide, extending outward. There is a model chain-like stripe below the orifice area. The neck is wide and low. The clay composition is clean. The clay colour is grey and the surface is pink. The surface is enamelled.	Unit 11 Depth:1m	Orifice width-3.5cm Wall thickness-1cm
406	Handle	A small vessel handle half part. It's narrow with a tape shaped cross section. There is an indent along the middle of the handle. It's attached to the vessel vertically in semi-circular shape. The clay composition is clean. The colour is light pink.	Unit 11 Depth:1m	Cross section width-1.2cm diam-4cm
407	Orifice element	A plate type vessel's orifice element fragment. The orifice area is bent sideways. The orifice area is smooth. There is a facet between the orifice area and the body. On the inside it's painted green with black line patterns and enamelled.	Unit 11 Depth:1m	Orifice width-2.3cm Wall thickness -0.7cm
408	Base	A plate-type vessel base fragment. The base is wide and slightly oval. The flank rises upright, bending slightly sideways. The orifice is wide. There is fine sand admixture in the clay composition. On the inside it's painted green and enamelled. On the outside the flank is also painted green and enamelled. The clay colour is light pink.	Unit 11 Depth:1m	Wall thickness-0.9cm
409	Handle	A medium size vessel handle half part. Its cross section is tape shaped. The orifice is narrow. The upper end of the handle is attached to the orifice area. The clay colour is grey and the surface is light pink.	Unit 11 Depth:1m	Cross section width-2.7cm Orifice d.5.2cm
410	Body	A medium size vessel body's lower part fragment.. The base is wide and flat. The body broadens upward. The wall is thin. The surface is corrugated. The clay colour is grey and the surface is pink.	Unit 11 Depth:1m	Base d.-10cm Stock lower part d.-16cm Wall thickness-0.5cm
411	Handle	A large vessel handle fragment. It's wide with a tape-shaped cross section. One of its ends is attached to the narrow orifice area and extends horizontally, bending downward. There are two slight grooves along the handle surface. The clay composition is clean. The surface is polished. The colour is whitish.	Unit 11 Depth:1m	Cross section-4.5cm Orifice diam.-5cm
412	Orifice element	A boiler-type broad orifice vessel's orifice element fragment. It belongs to a medium size vessel. On the outside the orifice area is slanted downward. It's flat. It transforms directly into the body. There is sand admixture in the clay composition. The colour is greyish brown. On the outside and especially inside it's covered with traces of soot and has traces of burning. The wall thickens upward.	Unit 11 Depth:1m	Orifice width -1cm Wall thickness- 0.4-1cm

No.	Type	Description	Unit/ Depth	Dimension
413	Handle	A boiler-type medium size vessel handle. The hook-like handle has a wide, tape-shaped cross section. There is a protruding stripe along the middle of the handle. The vessel neck is broad, low and inclined inward. The handle connects the middle of the body with the shoulder. There is significant sand admixture in the clay composition. The wall is thinning downward. The clay colour is grey and the surface is pink.	Unit 11 Depth:1m	Handle cross section-3cm Handle diam.-4cm Neck height-1.3cm Wall thickness-0.4-0.8cm
414	Body	A large vessel body fragment. There is a model chain like stripe on it. There is sand admixture in the clay	Unit 9 Depth:40cm	Wall thickness-0.9cm
415	Base	A vase-type vessel base fragment. The base has a ring like heel. From the base upward the body broadens sideways. The wall is thick. On the inside it's painted mat green and enamelled. Engobed coating of the same colour was applied to the bottom. The clay composition is clean. There is a trace of a round protrusion on the inside.	Unit 9 Depth:40cm	Base diameter-8cm Wall thickness-1cm
416	Base	A vase-type vessel base fragment. The base is wide, flat and thick. On the inside light creamy engobed coating underlies green and yellow paint covered with enamel and ornamented with natural images comprised of scratched lines. There is grey engobed coating on the bottom. The clay composition is clean. The colour is pink.	Unit 9 Depth:40cm	Wall thickness-1.5cm
417	Base	A small vase or bowl-type vessel base fragment. The base is narrow and has a ring-like heel. The body broadens sideways. The wall is thick. On the inside there are blue stripes and black dots on a white painted background covered with enamel. There is fine sand admixture in the clay composition. The colour is greyish yellow.	Unit 9 Depth:40cm	Wall thickness-0.8cm
418	Orifice element	A shallow plate-type vessel's orifice element fragment. The orifice area opens sideways. The edge is smooth. There is a facet in the orifice area part transforming into the oval base. On the inside and in the back of the orifice area there is white paint underlying a blue stripe along the orifice area and blue coloured straight and spiral-like stripe patterns on the inside, covered with enamel. There are two thin white lines framing a dark green stripe throughout the orifice area. On the inside the circles are also ornamented with eye like amulet patterns comprised of white lines. The colour is light pink. The bottom is polished and covered with creamy engobed coating. Fine sand admixture in the clay composition.	Unit 9 Depth:40cm	Orifice width-2.5cm Wall thickness-0.5cm
419	Orifice element	A small plate-type vessel's orifice element fragment. The orifice is broad. The orifice area is smooth. The upper and lower parts of the orifice's rear side were painted white. The inside of the orifice area is framed by two blue stripes ornamented with blue coloured natural image patterns, and enamelled. There is white engobed coating in the back. The clay colour is light pink.	Unit 9 Depth:40cm	Wall thickness-0.5cm
420	Orifice element	A bowl-type vessel body fragment. It's oval-shaped. The wall is gradually thinning. There is fine sand admixture in the clay composition. The surface was painted blue on both sides, decorated with black coloured natural patterns on the inside and enamelled. There are two parallel indented stripes on its rear side.	Unit 9 Depth:40cm	Wall thickness-0.3-0.7cm
421	Orifice element	A tiny boiler-type broad orifice vessel's orifice element fragment. The orifice area has welt laterally. The low and broad neck smoothly transforms into the shoulder. There is a small triangular-shaped protrusion below the orifice area. The wall is thin. There is sand admixture in the clay composition. The colour is dark pink. There are traces of soot on the surface.	Unit 20 Tandir oven 7	Orifice diam.-15.5cm Wall thickness-0.3cm
422	Handle	A large vessel handle fragment. Its cross section is tape-shaped. It is attached to the vessel vertically. The clay colour is grey and the surface is pink.	Unit 19 Depth:40cm	Cross section width-3cm Vessel wall thickness-0.7cm
423	Orifice element	A small plate-type vessel's orifice element fragment. The orifice area is bent sideways. The edge is smooth. There is a facet in the orifice area shifting into the oval base. The surface is painted turquoise on both sides, with further black lines girdling a black flower image on the inside of the orifice area, covered with enamel. The wall is thin. There is sand admixture in the clay composition. The colour is light pink.	Unit 19 Depth:40cm	Orifice width-1.2cm Wall thickness-0.5cm

No.	Type	Description	Unit/ Depth	Dimension
424	Neck	A narrow neck vessel fragment. The orifice area is smooth. It transforms directly into the neck. The low neck is gridled by a horizontal facet in the middle. The neck smoothly transforms into the shoulder. The clay composition is clean. The clay colour is grey and the surface is light pink. The wall is thin.	Unit 15 Depth:20-40cm	Orifice width-1cm Wall thickness-0.3-0.4cm
425	Handle	A medium size broad orifice vessel's handle fragment. Its cross section is tape-shaped. It connects the vessel orifice area and the body. There is fine sand admixture in the clay composition. The clay colour is grey and the surface is light pink.	Unit 15 Depth:20-40cm	Cross section width-2.8cm
426	Base	A tray-type vessel base fragment. The base is wide and flat. The wall thins toward the body. On the inside it's painted white, decorated with a blue stripe and vegetational patterns and enamelled. There is sand admixture in the clay composition. The colour is light pink. There is whitish engobed coating on the bottom.	Unit 15 Depth:20-40cm	Wall thickness-0.4-0.8cm
427	Base	A small vase or bowl-type vessel base fragment. The base is narrow and has a ring-like heel. The body broadens sideways and rises upward. There is sand admixture in the clay composition. The colour is red. On the inside it's painted blue and blackish, and enamelled.	Unit 9 Depth:60cm	Base diam.-4.5cm Wall thickness-0.7cm
428	Base	A tray-type vessel base fragment. The base is wide and flat. There is fine sand admixture in the clay composition. On the inside engobed coating underlies white paint with a green stripe girdling the centre, and blue coloured natural images on both sides of the stripe, covered with enamel. The wall thins down toward the edges.	Unit 9 Depth:60cm	Wall thickness-0.5-0.8cm
429	Base	A vase-type vessel base half part. The base is wide and has a ring-like heel. There is grey engobed coating on the vessel inside underlying white paint background with ray-like stripe patterns covered with enamel. The clay composition is clean. The colour is red.	Unit 13 Furnace 23	Base d.- 8.5cm Wall thickness-0.4cm
430	Base	A vase-type vessel base fragment. The base is narrow and has a ring-like heel. From the base upward the body broadens sideways. On the inside it's painted turquoise, framed with a black line and enamelled. There is a small black circle in the middle. There is a fragment left inside the small hole made upon the surface. There is sand admixture in the clay composition. The colour is light pink. White engobed coating in the bottom.	Unit 13 Furnace 23	Wall thickness-0.7cm
431	Base	A tray-type vessel base fragment. The base is wide and flat. The wall is thick. On the inside there is a blue painted background ornamented with green coloured natural patterns and enamelled. There is yellowish and white engobed coating on the bottom. There is sand admixture in the clay composition. The colour is light pink.	Unit 13 Furnace 23	Wall thickness-1.2cm
432	Body	A bowl-type vessel body fragment. The body is convex. The wall is thick. There is sand admixture in the clay composition. The colour is grey. The surface on both sides is painted whitish, with green and light brown vertical stripe patterns on the outside, covered with enamel.	Unit 13 Furnace 23	Wall thickness-1.2cm
433	kink	A kink made of a twisted copper wire.	Unit 13 Furnace 23	
434	Base	A vase type vessel base. The base is narrow and has a ring-like heel. The body broadens sideway. It appears that the flanks were deliberately broken. On the inside grey engobed coating underlies a white painted background ornamented with patterns and enamelled. The body is girdled on the edges by two black stripes. There is a green circle in the middle of the body with round-shaped black natural patterns in the centre. There are green almond-shaped images between the patterns. There is sand admixture in the clay composition. The colour is light pink. On the bottom part there is white engobed coating around the base.	Unit 15 Depth:40cm	Stock diam.-18cm Base diam.-9.3cm Wall thickness-0.4cm
435	Base	A vase-type vessel base fragment. The base is narrow and has a ring-like heel. The body broadens sideways. The wall is thick. The clay composition is clean. The colour is red. On the inside it has grey engobed coating, covered with black coloured natural patterns on a blue painted background, and enamelled. The bottom is polished.	Unit 15 Depth:40cm	Wall thickness-0.9-1cm
436	Orifice element	A plate-type vessel's orifice element fragment. The orifice element is bent sideway. The edge is smooth. The surface was painted white on both sides, while the orifice area is decorated with blue, askew and wavy patterns framed by blue stripes, and enamelled. There is sand admixture in the clay composition. The colour is pink.	Unit 15 Depth:40cm	Orifice width-2.7cm Wall thickness-0.5cm

No.	Type	Description	Unit/ Depth	Dimension
437	Orifice element	An orifice element fragment of a thin walled, light pink pitcher made of well baked clay with fine sand admixture. The orifice area had welt and was bent outward. There are traces of a potter's wheel on the inside.	Unit 9	Wall thickness-0.4cm
438	Sherd	A tiny pitcher fragment. The thick walled, red vessel was made of well baked clay with fine sand admixture. There are traces of a potter's wheel on the inside.	Unit 9	Wall thickness-0.4cm
439	Sherd	A fragment of a plate type ceramic vessel with transparent enamel covering a mixture of blue and brown-black coloured natural patterns on the inside. The orifice area is flat. Its red coloured clay is well baked.	Unit 9	Wall thickness-0.5cm
440	Sherd	An enamelled ceramic plate fragment. The orifice area opens broadly sideways. Its red coloured clean composition clay is well baked. The wall is thick. On the inside transparent enamel covers black, geometric wavy element patterns against a green-painted background.	Unit 15 Depth:80cm	Wall thickness-0.7cm
441	Sherd	A lower part fragment of a vase-type ceramic vessel with a relatively high heel made of well baked, red coloured, clean composition clay. On the inside of the vessel there are concentric lines drawn over white paint. It's enamelled. It was made on a potter's wheel.	Unit 15 Depth:80cm	Wall thickness-0.6cm
442	Sherd	A fragment of a plate type ceramic vessel painted pale green on the inside and outside with dark-coloured stripe patterns. On the outside its bent part is ornamented with wave-like patterns. The thick walled, red coloured vessel was made of well baked clay with clean composition.	Unit 15 Depth:80cm	Wall thickness-0.9cm
443	Sherd	A fragment of a thin walled, red coloured pitcher made of well baked clay with clean composition. It had a spheric body. The edge of the neck area is canal-like and deep. Vertical polished patterns were applied to the body part. One of its sides is not smooth. There are traces of a potter's wheel on the inside.	Unit 15 Depth:80cm	Wall thickness-0.4cm
444	Sherd	A medium size household jug orifice fragment. The orifice area had welt and was bent outward. This part was decorated with finger-pressed indented askew patterns applied prior to baking. The red coloured vessel was made on a potter's wheel using slightly baked clay with sand admixture.	Unit 15 Depth:80cm	Wall thickness-1cm
445	Sherd	The bottom of a thick walled ceramic vessel made of brown-coloured slightly baked clay with sand admixture. There are traces of a potter's wheel on the inside.	Unit 15 Depth:80cm	Base diam.-10.7cm Wall thickness-1.5cm
446	Sherd	Fragments of a thick walled, enamelled plate made of red coloured, well baked clay with clean composition. It has a heel. On the inside it's painted white with green circles (wheel-shaped) patterns and dark blue dots over the circles. On the bottom there are traces of spinning on a potter's wheel.	Unit 15 Depth:80cm	Wall thickness-0.7cm
447	Sherd	A fragment of an enamelled ceramic vessel with an orifice area bent outward and straight. It's enamelled on the inside and outside. On the outside it's painted plain blue and on the inside there is a mixture of white and brown colours covered with transparent enamel. It was made on a potter's wheel.	Unit 15 Depth:80cm	Wall thickness-0.5cm
448	Orifice element	A medium size pitcher's orifice element fragment. It has a narrow neck and a broad body. Its funnel-shaped orifice area is bent outward. The neck is smoothly bent, shifting into the shoulder. Thick walled and light red coloured, the item was baked well using clay with fine sand admixture. There is a slight indent on the surface.	Unit 19 Depth:80cm	Orifice diam.-15.5cm Neck height-5cm Base diam.-0.8cm
449	Orifice element	A medium size household jug's orifice fragment. Its funnel-shaped orifice area was bent outward. Its outward-bent parts are decorated with belt-like patterns. The light brown coloured item was made of slightly baked clay with clean composition. It was made on a potter's wheel.	Unit 19 Depth:80cm	Orifice diam.-19.5cm Wall thickness-0.7cm
450	Orifice element	A fragment of a thick walled boiler-type ceramic vessel made of dark brown, slightly baked clay with sand admixture. The orifice area is narrow and bent inward. The body is biconic. There is a straight line on the shoulder part. There are traces of burning on the surface. On one side there is a remainder of an auricle-like protruding handle. Presumably, made on a potter's wheel.	Unit 19 Depth:80cm	Wall thickness -0.3-0.6cm

No.	Type	Description	Unit/ Depth	Dimension
451	Orifice element	A base fragment of a thick walled, light red ceramic vessel made of slightly baked clay with sand admixture. Its bottom part has a protrusion. There are traces of a potter's wheel on the inside.	Unit 19 Depth:80cm	Base diameter-13.2cm Wall th.-0.7cm
452	Pitcher	Body fragment of a thick walled, red coloured pitcher made of well baked clay with sand admixture. Its body is sphere-shaped. The body is girdled by protruding stripes. The bottom part is rough and has sand admixture. A second layer of clay plastering is clearly visible on the surface. There are traces of a potter's wheel on the inside.	Unit 19 Depth:80cm	Wall thickness-0.4cm
453	Handle	A fragment of a flat, wide handle with a tape-shaped cross section. It belongs to a cup-type ceramic vessel. The handle connected the vessel neck and shoulder. The orifice area had welt and was bent outward. Light brown coloured, it was made of slightly baked clay with sand admixture.	Unit 19 Depth:80cm	Width- 3.5cm
454	Enamelled plate	A fragment of a deep bowl with light yellow plain paint covered with enamel on the inside. The red coloured item was made of well baked clay with clean composition.	Unit 19 Depth:80cm	Wall thickness-0.7cm
455	Enamelled plate	A fragment of a plate with white paint on the inside and outside underlying a mixture of blue and brown coloured paint on the inside. Arch-shaped patterns were applied along the edge on the inside. The surface is enamelled. The light orange item was made of well baked clay with sand admixture.	Unit 19 Depth:80cm	Wall thickness-0.7cm
456	Pitcher	A medium size pitcher's body fragment. The body part is girdled by a twisted belt-like pattern. The red coloured item was made of well baked clay with sand admixture. It was made on a potter's wheel.	Unit 17 Depth:40-80cm	Wall thickness-0.5cm
457	Pitcher	An orifice element fragment of a thin walled, red pitcher made of well baked, clean composition clay. Its orifice area had thick welt and was bent outward. This part has a twisted shape. It was made on a potter's wheel.	Unit 17 Depth:40-80cm	Wall thickness-0.4cm
458	Tiny vessel	A tiny vessel's neck fragment. The neck is narrow. There is a flat, wide and tape-shaped handle in the neck part. The red coloured item was made of well baked clay with clean composition.	Unit 17 Depth:40-80cm	Wall thickness-0.4cm
459	Enamelled vase	A fragment of a vase-type, heeled ceramic vessel with transparent enamel covering plain, light green paint on the inside. The red coloured item was made of well baked clean composition clay.	Unit 17 Depth:40-80cm	Wall thickness-0.4cm
460	Enamelled plate	A fragment of a plate with enamel covering various geometrical patterns comprised of wave-like and straight, parallel lines over green paint on the inside. The light brown item was made of well baked clay with clean composition.	Unit 17 Depth:40-80cm	Wall thickness-0.4cm
461	Enamelled vase	A fragment of a vase-type ceramic vessel with plain, dark brown paint on the inside. The surface is enamelled. It has a heel. Thin walled and light pink coloured, it was made of well baked clay with clean composition.	Unit 17 Depth:40-80cm	Wall thickness-0.4cm
462	Pitcher	A small pitcher's shoulder fragment. Its narrow neck broadens sideways. There are stripes on the part shifting from the neck into the shoulder. Its body is spheric. The thick walled item was made of well baked clay with clean composition. There are traces of a potter's wheel on the inside.	Unit 17 Depth:40-80cm	Wall thickness-0.4cm
463	Base	A base fragment of a thick walled, red coloured ceramic vessel made of slightly baked clay with sand admixture. The base part was roughly made. There are traces of a potter's wheel on the inside.	Unit 17 Depth:40-80cm	Wall thickness-0.4cm
464	Salt cellar	A small salt cellar-type ceramic vessel. The orifice is broken. The body is convex. The base is wide and heeled. It's an ordinary and handmade vessel. The pale green coloured item was baked well using clean composition clay.	Unit 17 Depth:40-80cm	Wall thickness-0.4cm
465	Orifice element	An orifice element fragment of a thick walled, brown pitcher-type ceramic vessel made of well baked clay with sand admixture. The orifice area had welt and was bent outward. It's roughly handmade.	Unit 17 Depth:40-80cm	Wall thickness-0.4cm
466	Churn handle	A fragment of a churn-type ceramic vessel's handle horizontally attached to the vessel. Its cross section is round. There is a non-symmetric pattern on the upper part of the handle applied prior to baking. The red coloured item was made of well baked clay with sand admixture.	Unit 17 Depth:40-80cm	Wall thickness-0.4cm
467	Sherd	A tiny hearth-like vessel fragment. Presumably, it was used as a scent container. The brown-grey coloured item was made of well baked, clean composition clay. Its neck is narrow. The orifice area had welt and was bent outward. A wide, tape-shaped handle was attached to the neck part. The vessel is roughly handmade.	Unit 17 Depth:40-80cm	Wall thickness-0.4cm

No.	Type	Description	Unit/ Depth	Dimension
468	Sherd	Vessel fragment with a pattern comprised of a mixture of white, blue and dark brown colours on the inside. Ornamental natural image patterns were applied to the surface. It's covered with transparent enamel. Light brown coloured, made of well baked clay with clean composition.	Unit 17 Depth:40-80cm	Wall thickness-0.4cm
469	Sherd	A fragment of a bowl with transparent enamel covering dark brown, plain paint on the inside. It's relatively deep. Red coloured, it was made of well baked clay with clean composition. It was made on a potter's wheel.	Unit 17 Depth:40-80cm	Wall thickness-0.4cm
470	Enamelled pottery	An enamelled ceramic fragment with the inside and outside sections painted light blue and then ornamented with a black natural flower image pattern on the inside. Light brown coloured, it was made of well baked clay with clean composition.	Unit 17 Depth:40-80cm	Wall thickness-0.4cm
471	Enamelled plate	A fragment of a ceramic vessel painted white on the inside and outside and ornamented on top with blue and dark brown patterns on the inside. The white coloured item was made of well baked clay with clean composition.	Unit 17 Depth:40-80cm	Wall thickness-0.4cm
472	Enamelled plate	An enamelled ceramic vessel fragment painted white on the inside and outside, and ornamented with blue and brown coloured patterns on the inside. The light yellow item was made of well baked clay with clean composition.	Unit 17 Depth:40-80cm	Wall thickness-0.4cm
473	Enamelled plate	An enamelled plate fragment painted light brown on the inside with dark brown coloured geometrical element patterns comprised of ornamental, circular, concentric and parallel lines. The light red coloured item was made of well baked clay with clean composition.	Unit 17 Depth:40-80cm	Wall thickness-0.7cm
474	Deer horns	A deer horn that was presumably used.	Unit 17 Depth:40-80cm	Length- 11.5cm
475	Enamelled bowl	A bowl fragment covered with transparent enamel that was painted green on the inside and ornamented with straight, wavy ornamental patterns on the outside over light brown paint. There are concentric line patterns both on the inside and outside.	Unit 17 Depth:40-80cm	Length- 11.5cm
476	Sediment	Pieces of metal sediment.	Unit 11 Furnace 17	Wall thickness-1cm
477	Enamelled plate	A fragment of a plate with crumbled enamel covering blue paint on the inside and outside, and natural image patterns with black colour shades on the inside. The light red coloured item was made of well baked clay with sand admixture.	Unit 11 Furnace 17	Wall thickness-0.7cm
478	Enamelled plate	Fragment of a plate with enamel covering white paint on the inside and outside, as well as blue, dark green shaded stripes and arch-shaped patterns on the inside. The orifice area of the plate opens widely sideways. Light brown item made of well baked clay with clean composition.	Unit 11 Furnace 17	
479	Enamelled bowl	A fragment of a plain-shaped bowl painted green and covered with transparent enamel on the inside. Its body is biconic. Red coloured, it was made of well baked clay with clean composition. Its base has a heel. Traces of a potter's wheel are clearly visible on the inside. On the outside the orifice area is covered with white coloured engobed coating.	Unit 11 Furnace 17	Base diam.-6.2cm Heel height-0.5cm Wall thick 0.5cm
480	Handle	A fragment of a handle with a tape-shaped cross section. The white coloured item was made of well baked clay with sand admixture. On the bottom there is an indented pattern applied prior to baking. It presumably belongs to a cup-type ceramic vessel.	Unit 11 Furnace site	Length- 10cm Width- 2.2cm
481	Lid fragment	A fragment of a lid-type, thick walled, red coloured ceramic item made of well baked clay with sand admixture. The upper parts of its lateral sides are bent upward. The bottom is sooty. There is a red-painted stripe pattern left on the surface.	Unit 11 Furnace site	Wall thickness-0.7cm
482	Enamelled pottery	Ceramic vessel fragment with transparent enamel covering white paint on the inside and outside. On the inside white paint underlies dark, brown-coloured natural ornamental patterns. The thick walled, red coloured item was made of well baked clay with clean composition.	Unit 11 Furnace 19	Wall thickness-0.7cm
483	Enamelled pottery	A ceramic vessel fragment with black coloured natural element patterns over dark green paint on the inside and outside. The light red coloured item was made of well baked clay with clean composition.	Unit 11	Wall thickness-0.7cm
484	Enamelled pottery	A fragment of a tiny, thin walled, light pink pitcher made of slightly baked clay. The orifice area has welt and is bent outward. It was made on a potter's wheel.	Furnace 19	Wall thickness-0.4cm

No.	Type	Description	Unit/ Depth	Dimension
485	Enamelled pottery	A fragment of a hook made of metal. Significantly corroded.	Unit 11	
486	Enamelled pottery	A fragment of an enamelled plate painted light brown on the inside with dark brown criss-cross and concentric lines. The thick walled, red coloured item was made of well baked clay with clean composition.	Unit 11 Tandir oven 9	Wall thickness-0.8cm
487	Enamelled pottery	A fragment of an enamelled ceramic vessel painted white on the inside and outside with blue and green painted stripe patterns covered with enamel. The thick walled, red item was baked well using clay with fine sand admixture.	Unit 11 Tandir oven 9	Wall thickness-0.6cm
488	Enamelled plate	A fragment of an enamelled ceramic plate painted green on the inside with scratched line natural image patterns on the inside. The thick walled, red coloured item was made of well baked clay with clean composition. It is relatively heeled.	Unit 11 Tandir oven 9	Wall thickness-0.7cm
489	Enamelled plate	A fragment of a ceramic vessel with transparent enamel covering black natural image patterns over a green painted background in the middle of the inside part. The vessel wall is red coloured, made of well baked clean composition clay. It has a relatively high heel.	Unit 21 Depth:1 m	Wall thickness-0.7cm
490	Enamelled vase	A bottom fragment of a vase with enamel covering green and black colour paint against a brown-painted background on the inside. It has a heel on the bottom. The thick walled, red coloured item was made of well baked clean composition clay. It was made on a potter's wheel.	Unit 21	Base diameter-11cm Wall thickness-1.5cm
491	Enamelled vase	The bottom fragment of a vase with enamel covering scratched, concentric circular patterns on a light brown and green-painted background on the inside. The thick walled and light orange coloured item was baked well using clean composition clay.	Depth:1 m	Base diam.-9cm Wall thickness-0.7cm
492	Handle	A fragment of a handle with a tape-shaped cross section. It belongs to a cup-type ceramic vessel. It connects the vessel orifice area and the body. The light red coloured item was baked well using clay with sand admixture.	Unit 21	Width-3.2cm
493	Pitcher	A fragment of a thick walled pitcher-type ceramic vessel made of red coloured well baked clay with clean composition. Its bottom is flat. The body is jar-shaped.	Unit 11 Furnace 18	Base diameter-12.5cm Wall thickness-0.7cm
494	Pottery fragment	An orifice element fragment of a thick walled, light red coloured ceramic pitcher made of well baked clay with sand admixture. The orifice area opens broadly sideways. It was made on a potter's wheel.	Unit 11 Tandir oven 10	Wall thickness-0.3cm
495	Cup	A neck fragment of a thick walled cup-type, brown ceramic vessel made of well baked clay with sand admixture. The orifice area wall is straight. There is a remainder of a flat, wide and tape-shaped handle in the neck part. It was made on a potter's wheel.	Units 19-20	Wall thickness-0.6cm

7 APPENDICES

7.1 REFERENCES

1. R. M. Vahidov, V. P. Fomenko. *The Medieval Temple in Mingachevir*. Tangible culture of Azerbaijan, issue No. 2, Baku, 1951, p. 90-102.
2. G. I. Ione. *About the pottery roasting kilns from Mingachevir*. Tangible culture of Azerbaijan, issue No. 2, Baku, 1951, p. 31-79.
3. Arif Mammadov. *The ancient and medieval monuments of Salyan*. The history, archeology, ethnography and architecture of Salyan. A scientific-practical conference.
4. *Azerbaijani Archaeology*. VI volumes. Volume VI (Middle Ages), Baku, "Sharg-Gerb", 2008, 632 p.
5. A. M. Aghalarzade. *The outcomes of an academic trip to the Neftchala District*. Archaeological researches in Azerbaijan, 2011, Baku, 2012, p. 202-209.
6. T.M. Dostiyev. *About the tandir ovens discovered in the Salmanbulaghi settlement*. A collection of reports by young Azerbaijani researchers on historical issues at the 3rd nationwide scientific conference. Baku, 1995.
7. V.A. Ahmadova. *Azerbaijani tandir ovens*. Azerbaijan SSR AS News (the series on history, philosophy and law), 1984, No. 1, p. 51-84.
8. M.M.Huseynov, S.N.Najafov. *About the household wells and tandir ovens discovered in the medieval Dashbulag settlement*. News – ASPU (humanities series), December, No. 4, 2006, p. 368-373.
9. O.S. Ismizade, F.A. Ibrahimov. *About the medieval tandir ovens derived during the excavations in the city of Baku*. Azerbaijan SSR AS News (the series on history, philosophy and law), 1974, No. 2.
10. G.P.Kasamanly, G.F. Jafarov. *Excavations in the Bitdili settlement*. Archeological and ethnographic researches in Azerbaijan (1976), Baku, 1979.

7.2 ILLUSTRATIONS

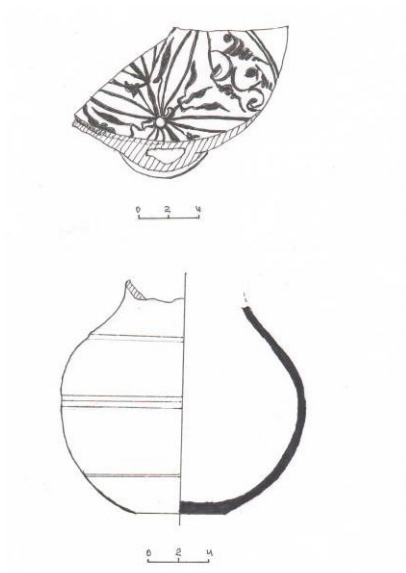


Fig. 4. 1. Vase body. 2. Pitcher with convex body

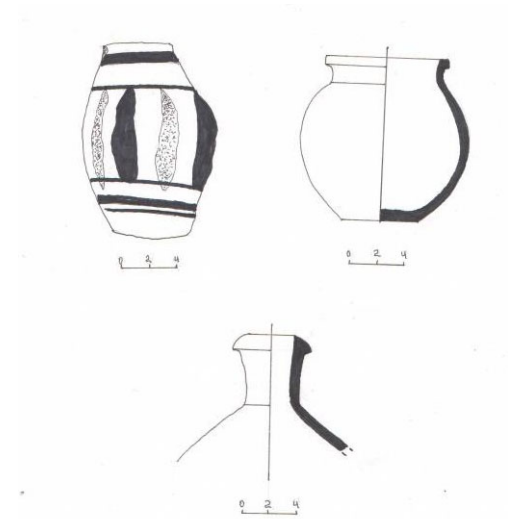


Fig. 5. 1. Bowl body. 2. Dopu. 3. Flagon neck

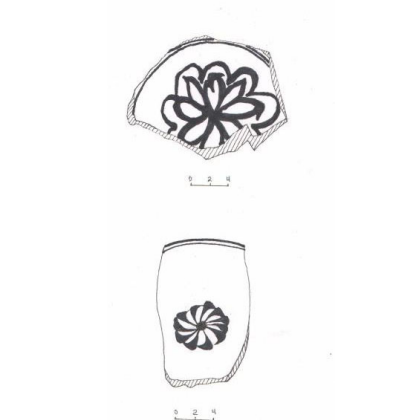


Fig. 6. Enamelled vase bodies

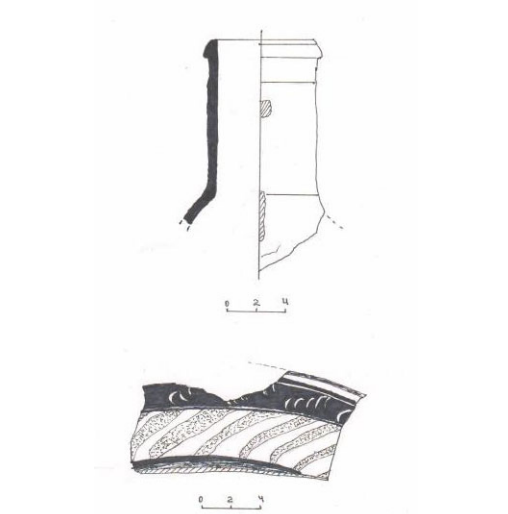


Fig. 7. 1 Pail neck. 2 Plate body

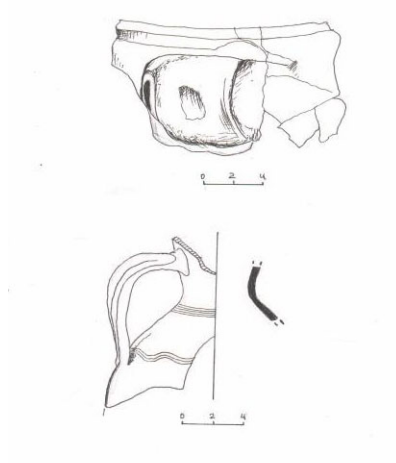


Fig. 8. 1. Boiler handle. 2. Jug body

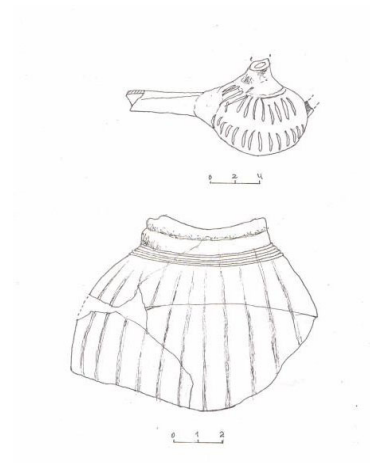


Fig. 9. 1. Clay lamp (inv 150). 2 Pitcher body

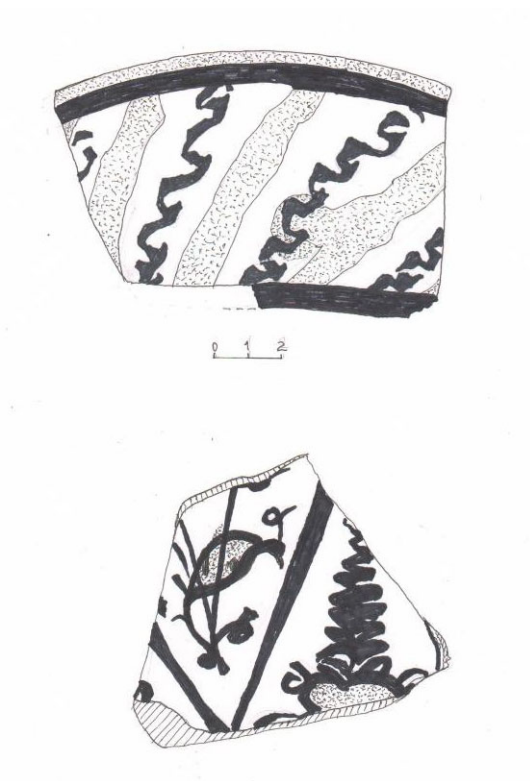


Fig. 10. Plate fragments

7.3 PHOTOS



Photo 11. Archaeological excavation. View to west.



Photo 12. Furnace 1



Photo 13. Bowl sherds extracted from Furnace 1



Photo 14. Tandır oven 1



Photo 15. Furnace 2



Photo 16. Furnace.3



Photo 17. Furnace 4



Photo 18. Pole site



Photo 19. Furnace 5



Photo 20. Tandır oven 2



Photo 21. Furnace 6



Photo 22. inv.138. Vessel handle.

Inv.139. Iron object



Photo 23. Furnace 7



Photo 24. Furnace 9a



Photo 25. Tandır oven 3



Photo 26. Furnace 9b



Photo 27. Furnace 10



Photo 28. Furnace 11



Photo 29. Furnace 12



Photo 30. Furnace 13



Photo 31. Furnace 14



Photo 32. Tandır oven 5



Photo 33. Tandır oven 6



Photo 34. Tandır oven 7



Photo 35. Small boiler orifice



Photo 36. Furnace 15



Photo 37. Tandır oven 8



Photo 38. Furnace 16



Photo 39. Furnace 17



Photos 40. Fragment of enamelled plate body



Photos 41. Fragment of enamelled plate body



Photo 42. Enamelled plate body



Photo 43. Enamelled bowl fragments



Photo 44. Tandır oven 9



Photo 45. Enamelled plate fragments



Photo 46. Enamelled plate fragment



Photo 47. Tandır oven 10



Photo 48. Tandır oven 11



Photo 49. Furnace 19 and 20



Photo 50. Furnace 21



Photo 51. Jug lower part



Photo 52. Tandır oven 12



Photo 53. Furnace 24



Photo 54. Round-shaped tandir ovens



Photos 55-56. Pitcher base



Photo 57. Pitcher orifice



Photo 58. Chain-like pattern over jug body

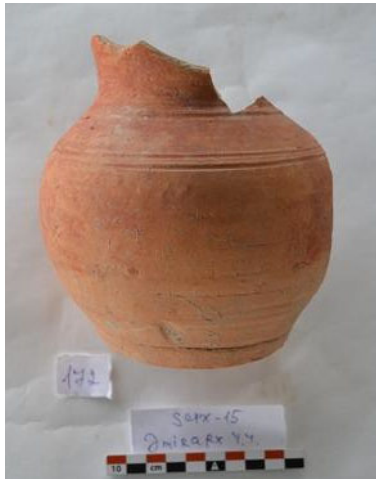


Photo 59. Small pitcher



Photo 60. Jug body



Photo 61. Jug body



Photo 62. Jug body



Photo 63. Jug orifice



Photo 64. Jug base



Photo 65. Dopu



Photo 66. Ceramic vessel fragments



Photo 67. Bowl fragments



Photo 68. Enamelled vase



Photo 69. Vase base



Photo 70. Vase base



Photos 71-79. Enamelled vase fragments



Photo 80. Enamelled plate and kheyra fragments



Photo 81. Boiler handle



Photo 82. Salt cellar



Photo 83. Flagon neck



Photo 84. Ceramic vessel fragments



Photo 85. Churn handle



Photo 86. Inv.201. Plate orifice.

Inv.202. Spout



Photo 87. Lid fragment



Photo 88. Crock handle



Photo 88. Pail neck



Photo 90. Clay lamp (inv 150).



Photo 91. Clay cup



Photo 92. Jug



Photo 93. Blue glazed bowl.



Photo 94. Iron nail and iron fragment.



Photo 95. Iron blade fragments (inv 49).



Photo 96. Iron hook



Photo 97. Copper loop



Photo 98. Stone grindstone



Photos 99. Stone hammer

Photo 100. Inv.361. Stone grindstone.

Inv.362 .Fired brick piece.



Photo 101. Boar tooth



Photo 102. Deer antler



Photo 103. Deer antler