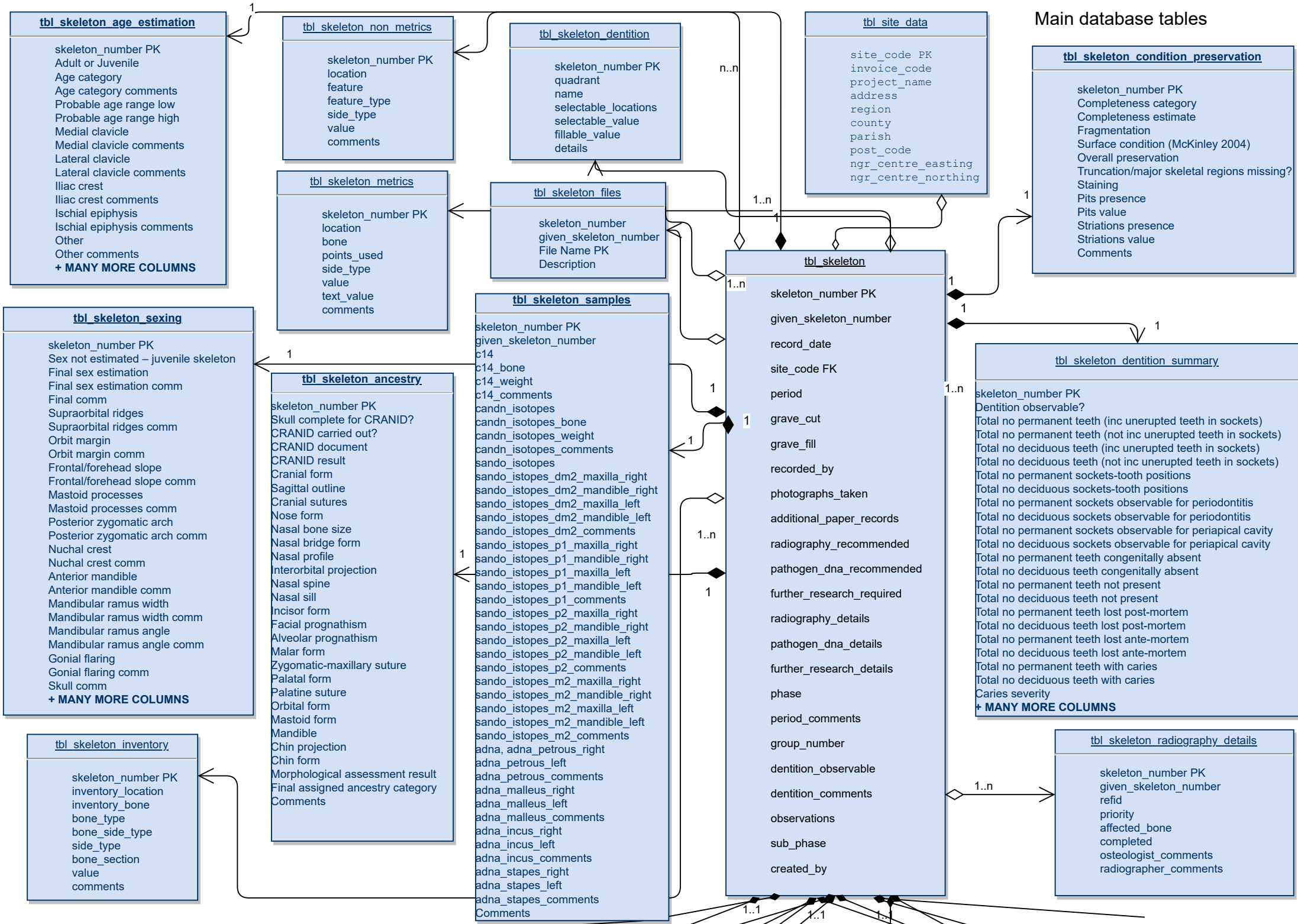


Main database tables



Pathology tables

tbl_skeleton_pathology_congenital

skeleton_number PK
 Congenital/developmental condition/s present? presence
 Congenital/developmental condition/s present? comments
 Syndrome indicated? presence
 Syndrome indicated? details
 Syndrome indicated? comments
 Skull affected? presence
 Skull affected? comments
 Craniosynostosis presence
 Craniosynostosis details
 Craniosynostosis comments
 Cleft palate presence
+ MANY MORE COLUMNS

tbl_skeleton_pathology_metabolic

skeleton_number PK
 Evidence for metabolic disease observed? Presence
 Evidence for metabolic disease observed? comments
 Cribra orbitalia (anaemia) (Stuart-Macadam 1991) Right presence
 Cribra orbitalia (anaemia) (Stuart-Macadam 1991) Right comments
 Cribra orbitalia (anaemia) (Stuart-Macadam 1991) Left presence
 Cribra orbitalia (anaemia) (Stuart-Macadam 1991) Left comments
 Porotic hyperostosis (anaemia) presence
 Porotic hyperostosis (anaemia) details
 Porotic hyperostosis (anaemia) comments
 Rickets/residual rickets deformity presence
 Rickets/residual rickets deformity details
+ MANY MORE COLUMNS

tbl_skeleton_pathology_circulatory

skeleton_number PK
 Circulatory condition observed? presence
 Circulatory condition observed? comments
 Osteochondritis dissecans presence
 Osteochondritis dissecans details
 Osteochondritis dissecans joint
 Osteochondritis dissecans comments
 Scheuermann's disease presence
 Scheuermann's disease details
 Scheuermann's disease comments
 Aortic aneurism (visible on vert. bodies) presence
 Aortic aneurism (visible on vert. bodies) details
+ MANY MORE COLUMNS

tbl_skeleton_pathology_neoplastic

skeleton_number PK
 Neoplastic disease observed? presence
 Neoplastic disease observed? comments
 Osteoid osteoma presence
 Osteoid osteoma details
 Osteoid osteoma comments
 Osteoma (inc. button) presence
 Osteoma (inc. button) details
 Osteoma (inc. button) comments
 Osteoblastoma presence
 Osteoblastoma details
 Osteoblastoma comments
+ MANY MORE COLUMNS

tbl_skeleton_pathology_undiagnosed_condition

skeleton_number PK
 Undiagnosed pathology observed?
 Undiagnosed pathology observed? comments
 No. of undiagnosed pathology observed
 No. of undiagnosed pathology observed comments
 Undiagnosed condition table reference FK
 Overall comments

tbl_skeleton_pathology_spinal_joint_disease

skeleton_number PK
 Spinal joint disease observed?
 Spinal joint disease observed? comments
 Schmorl's nodes
 Schmorl's nodes comments
 Vertebral body marginal osteophytes
 Vertebral body marginal osteophytes comments
 Vertebral body pitting/dense bone
 Vertebral body pitting/dense bone comments
 Spinal Osteoarthritis (sup/inf/costal facets/odontoid joint)
 Spinal Osteoarthritis comments
 CV bodies with Schmorl's nodes
+ MANY MORE COLUMNS

tbl_skeleton_pathology_modification

skeleton_number PK
 Amputation (isolated limb present only) presence
 Amputation (isolated limb present only) details
 Amputation (isolated limb present only) comments
 Amputation (skeleton present, limb missing) presence
 Amputation (skeleton present, limb missing) details
 Amputation (skeleton present, limb missing) comments
 Amputation (skeleton present, limb missing) healing
 Craniotomy presence
 Craniotomy details
 Craniotomy comments
 Decapitation presence
+ MANY MORE COLUMNS

tbl_skeleton_pathology_miscellaneous

skeleton_number PK
 Miscellaneous pathology observed? presence
 Miscellaneous pathology observed? comments
 Cribra femoralis Right presence
 Cribra femoralis Right comments
 Cribra femoralis Left presence
 Cribra femoralis Left comments
 Hyperostosis frontalis interna (HFI) presence
 Hyperostosis frontalis interna (HFI) details
 Hyperostosis frontalis interna (HFI) comments
 Eagle syndrome presence
 Eagle syndrome details
+ MANY MORE COLUMNS

tbl_skeleton_pathology_specific_infection

skeleton_number PK
 Evidence for specific infection observed?
 Evidence for specific infection observed? comments
 Specific infection table reference FK
 Overall comments

tbl_skeleton_pathology_trauma

skeleton_number PK
 Trauma observed? presence
 Trauma observed? comments
 Ante-mortem fracture observed? presence
 Ante-mortem fracture observed? comments
 Ante-mortem fracture table reference
 Subluxation presence
 Subluxation joint
 Subluxation comments
 Ossified haematoma presence
+ MANY MORE COLUMNS
 Peri-mortem trauma table reference
+ MORE COLUMNS

tbl_skeleton_pathology_non_specific_inflammation

skeleton_number PK
 Non-specific inflammation/infection present?
 Non-specific inflammation/infection present? comments
 Maxillary sinusitis right
 Maxillary sinusitis left
 Maxillary sinusitis right comments
 Maxillary sinusitis secondary to dental disease? right
 Maxillary sinusitis secondary to dental disease? left
+ MANY MORE COLUMNS
 Periostitis table reference FK
 Osteitis table reference FK
 Osteomyelitis table reference FK
+ MORE COLUMNS

tbl_skeleton_pathology_extra_spinal_joint_disease

skeleton_number PK
 Extra-spinal joint disease observed? presence
 Extra-spinal osteoarthritis observed (in any joint)? presence
 Extra-spinal osteoarthritis observed (in any joint)? comments
 TMJ left disease
 TMJ left presence
 TMJ right disease
 TMJ right presence
 TMJ OA secondary to trauma presence
 TMJ OA secondary to trauma comments
 Acromio-clavicular left disease
 Acromio-clavicular left presence
+ MANY MORE COLUMNS

1..n

1..n

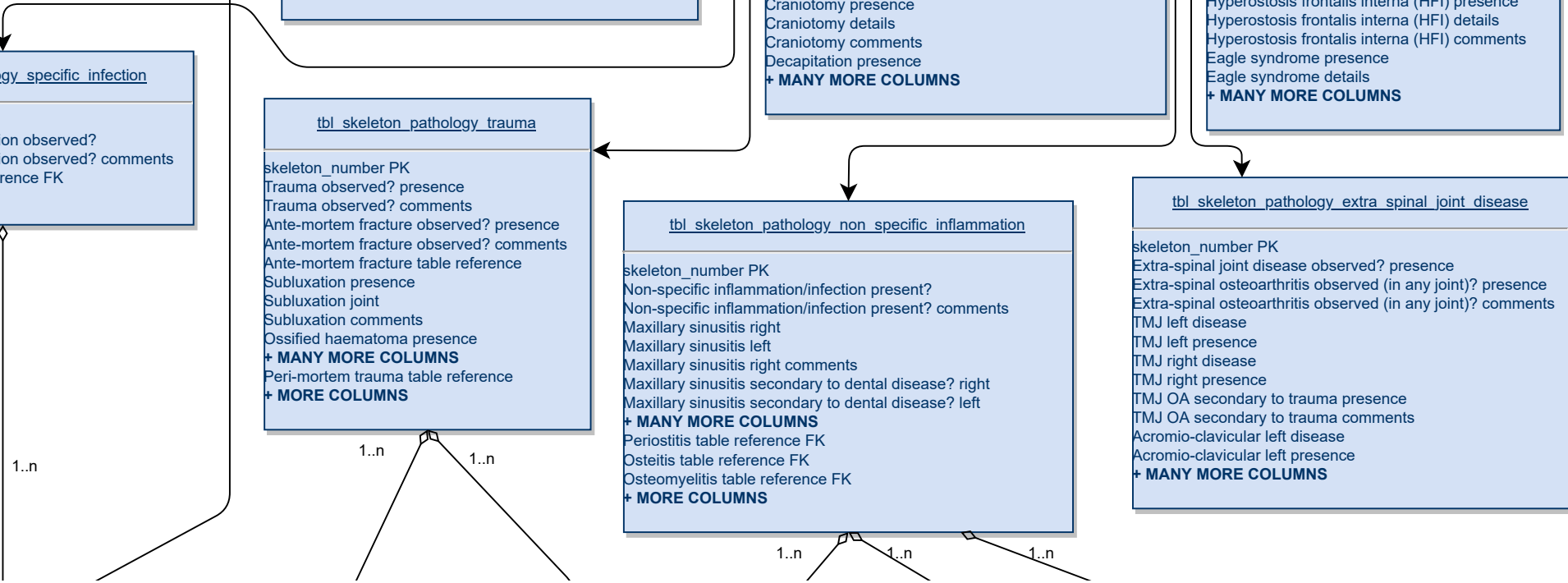
1..n

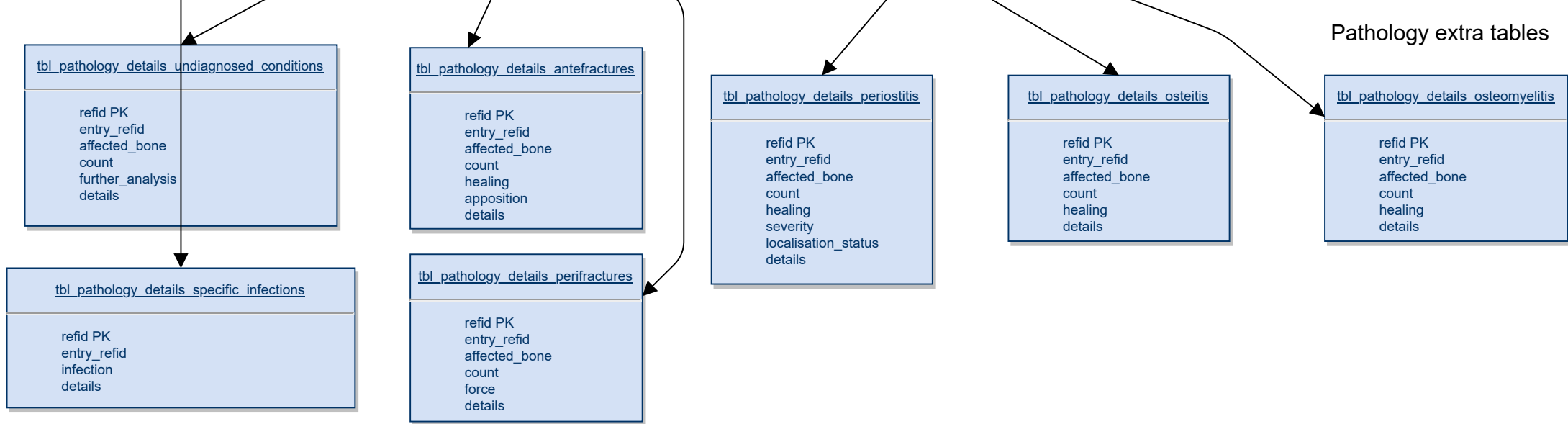
1..n

1..n

1..n

1..n





Empty tables are not included in the upload and any tables that appear in the ER Diagram that are not present in the archived version were blank.