

REGIONAL GROUP REPORTS 1993–94

The London Area Pottery Research Group

No meetings were held in 1993, although a meeting on kiln assemblages is being planned for 1994 as a sequel to the Annual Conference. Any suggestions for further meetings, and offers to host meetings, would be appreciated. These should be addressed to me at The Department of Medieval and Later Antiquities, The British Museum, London WC1B 3DG.

Beverley Nenck

South Central Regional Group

The Group did not meet in 1993, although interest has been sustained, and a revival is planned for the coming year. Existing members have already been canvassed, but anyone interested in joining the Group should contact me at The Trust for Wessex Archaeology, Portway House, Old Sarum Park, Salisbury SP4 6EB. Suggestions for future themes and venues will be very welcome.

Lorraine Mephram

South East Midlands Medieval and Later Pottery Research Group

A spring meeting of SEMPER and the East Anglian Pottery Research Group was held at the Greyfriars Archaeological Project in Norwich, hosted by Irene Lentowicz. Talks on the excavations there led to some lively discussions about MAP2 assessments. Lunch was followed by a site tour, something not often done at pottery meetings. Although it was wet and muddy, it gave us a chance to put the pottery into its context. A viewing of the pottery followed, with emphasis on imported wares.

Another joint meeting with East Anglia was held in the autumn at the British Museum, hosted by David Gaimster and Beverley Nenck; this was attended by about twenty people. The theme of the day was stonewares, and we were able to view the full chronological range of both kiln and excavation samples. We were also able to examine the complete vessels in the Museum stores.

For further details of the Group contact me at Bedfordshire Archaeology Service, Bedfordshire County Council Planning Department, County Hall, Bedford.

Anna Slowikowski

East Midlands Pottery Research Group

The EMPRG did not hold any official meetings during 1993, but members have nonetheless been active. Firstly, ongoing work on the East Midlands Anglo-Saxon Pottery Project has included data-collecting sessions: Alan Vince, Jane Young and Judy Wilkinson met with colleagues from Nottingham University and Trent and Peak Archaeological Trust at Sheffield Museum in November, and at the University of Nottingham and at Derby Museum in January. The fourth annual report (CLAU Archaeol Rep 86) of the EMASPP, by Mike Hughes on the NAA of Anglo-Saxon shelly wares, was published in February. In July, John Hurst met with Lincolnshire members at Boston to take a new look at the medieval imports of Boston. This included an afternoon talk by John Hurst, which was also attended by members of Nottingham University Adult Education Dept.

Judy Wilkinson, Secretary

West Midlands Pottery Research Group

In October 1993 the Group held a joint meeting with the North West Region MPRG at the offices of Stafford Borough Council. The theme was 'Castles and Ceramics', and after an introduction to Stafford Castle by John Darlington, Stephanie Ratkai provided an account of the pottery from this major site. Paul Courtney followed with a discussion of the ceramics from Beeston Castle in Cheshire (recently published), and Caergwrle Castle in Clywd. There was subsequently an opportunity to see the pottery from the excavations at Stafford Castle.

A meeting at the Stoke-on-Trent City Museum and Art Gallery on late medieval and early post-medieval pottery from the six towns is planned for March 1994. This will include handling of ceramics from the National Reference Collection of Post-Medieval pottery.

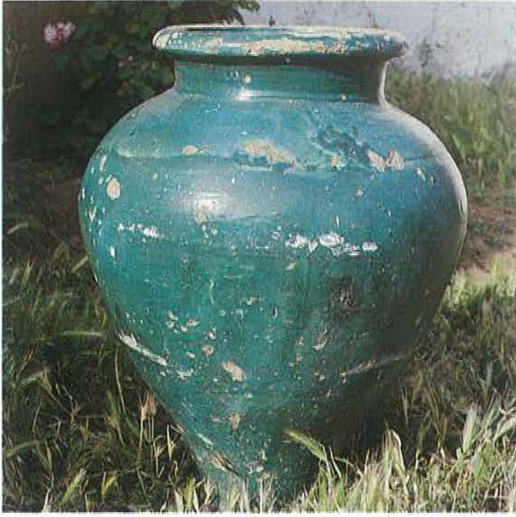
Derek Hurst

The Welsh Medieval Pottery Research Group

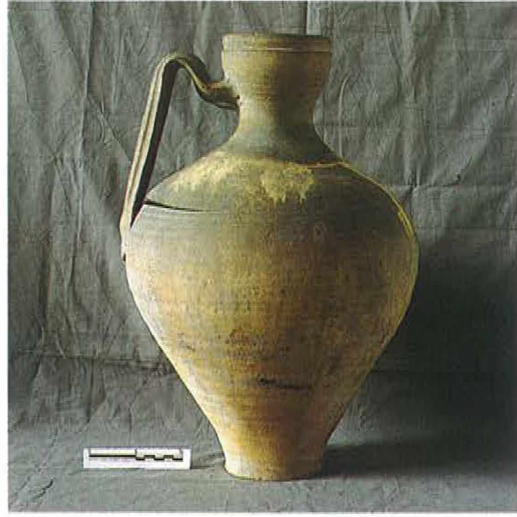
No meetings have been held since that in Monmouth, March 1993, but the 13th volume of Medieval and Later Pottery in Wales is now out and hopefully this will stimulate new debate. For details of this and other volumes please contact me at the Glamorgan-Gwent Archaeological Trust Ltd, Ferryside Warehouse, Bath Lane, Swansea SA1 1RD (tel. 0792 655208).

Steve Sell, Treasurer, WMPRG

Colour Plate 1



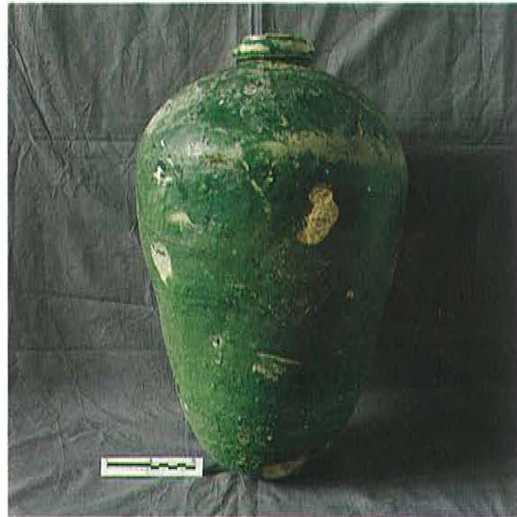
a



b



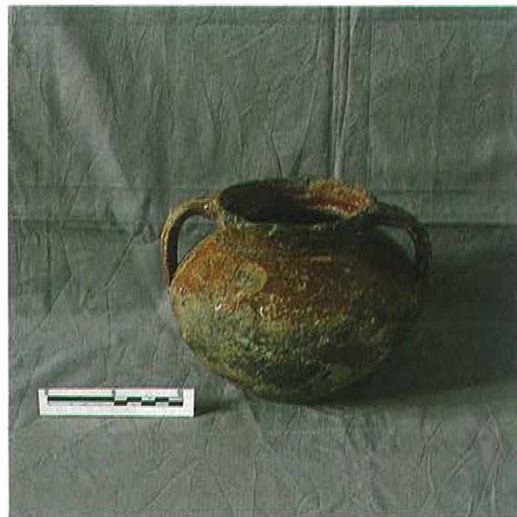
c



d



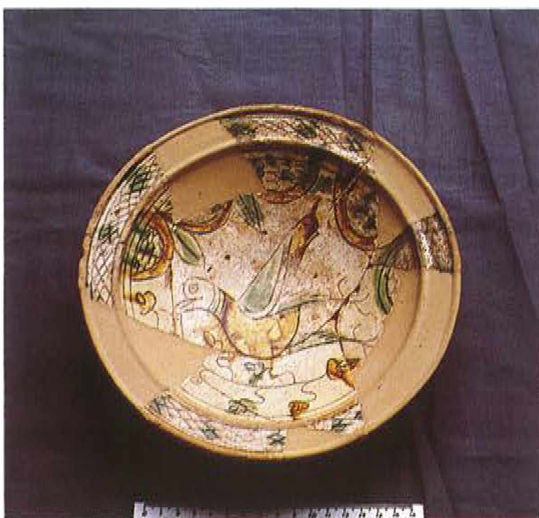
e



f

Seville coarsewares (see pp. 39–50): a, tinaja, 16th-century green-glazed storage jar (private collection); b, cántaro, 14th-/15th-century pitcher (M.A.S., REP 298); c, cantimplora, 14th-/15th-century barrel costrel (M.A.S., REP 292); d, botija, 17th-century green-glazed olive jar (M.A.S.); e, botija perulera, 16th-century olive jar (M.A.S.); f, olia, 16th-century stew-pot (M.A.S.).

Colour Plate 2



a



b

13th- to 15th-century Ligurian wares from S. Fruttuoso di Camogli, Genoa (see pp. 13–23)
a, archaic graffita bowl; b, proto-maiolica bowl.



c



d



e



f

15th- to 16th-century Ligurian wares (see pp. 25–33): c, floor-tile from Genoa; d, berettino with foliate decoration; e, apothecary jars decorated in the berettino style; f, polychrome jug.

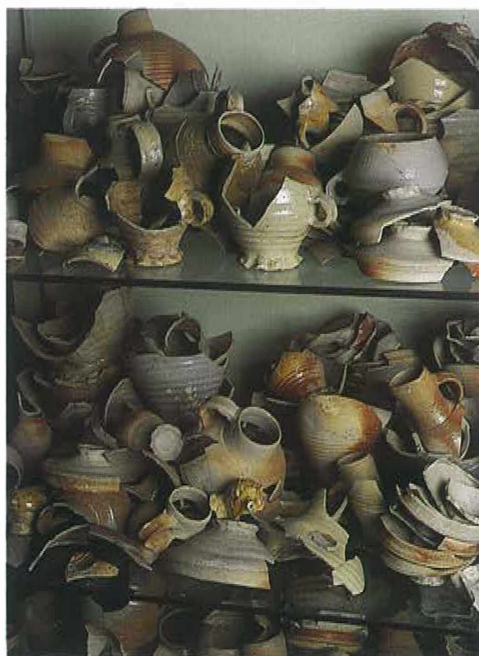
Colour Plate 3



a



b



c

15th to 16th-century Tuscan wares from Montelupo (see pp. 25–33): a, polychrome jug sherds decorated in the 'palmetta persiana' style; b, blue-and-white dish decorated in the 'losanghe' style (upper) and polychrome dish of 'Santa Fina' ware (lower).

c. A selection of the large group of Siegburg and Langerwehe stonewares, found on a site in Bruges and probably reflecting commercial activities (see pp. 61–67).



d. A hearth on board a cargo-vessel wrecked in the Zuider Zee c. 1600 and excavated on lot LZ 1 in 1990; it comprises a square oak box filled with sand and topped by tiles. Beside it lie some ceramics and firetongs in situ (see pp. 69–76).

Colour Plate 4



a

a. Redware colander and cooking pots and a copper kettle in situ on board a late 16th-century cargo vessel excavated in lot LZ 1 in the Netherlands in 1990 (see pp. 69–76).

b. Two pear-shaped redware cooking pots of the early 16th century, from a 'waterschip' excavated on lot K 84 in the Netherlands (see pp. 69–76).



b