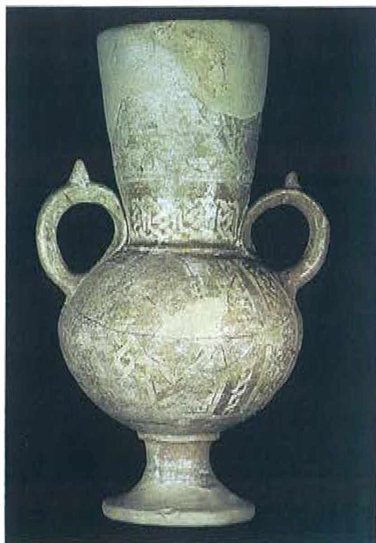
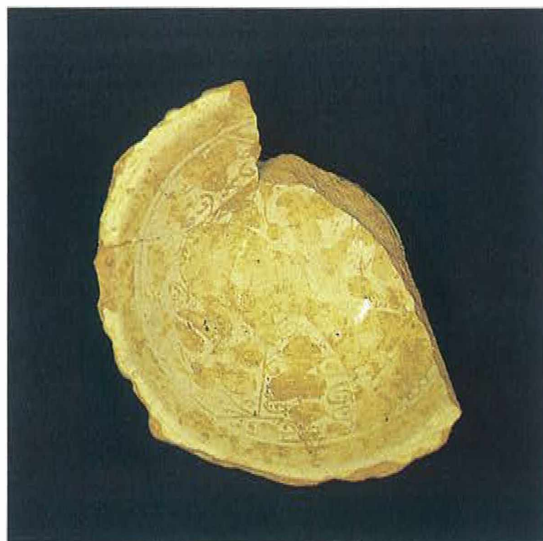


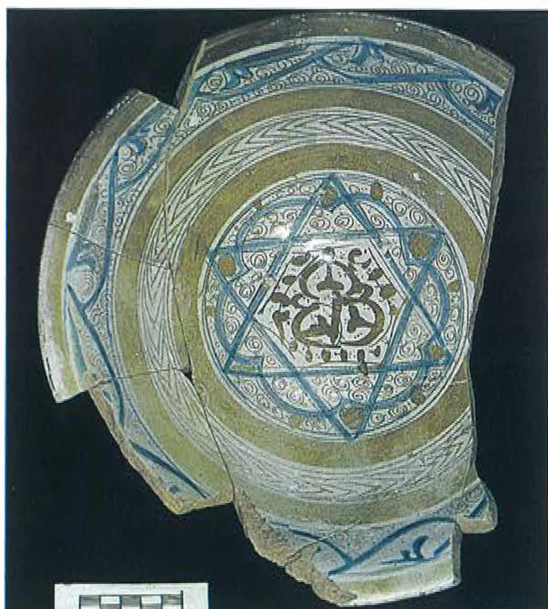
Colour Plate 1



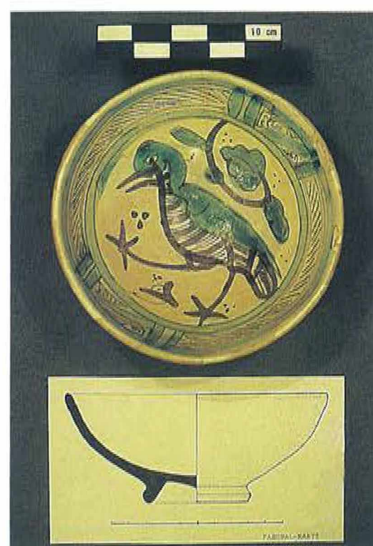
a



b



c



d



e

13th–15th century Spanish wares (see pp. 3–7). a, Andalusian Lustreware jug (the Alcazaba, Malaga: Museo Arqueológico Provincial de Malaga. Photo: Puertas Tricas 1992, Fig. 60); b, small Early Valencian Lustreware bowl ('Estilo Malagueño Primitivo') (urban excavations in Valencia: Servicio de Investigación Arqueológica Municipal (SIAM), Valencia); c, small Early Valencian Lustreware bowl ('Estilo Malagueño Evolucionado') (urban excavations in Valencia: SIAM, Valencia); d, small green and brown bowl ('Estilo Clásico', Valencia) (Paterna: Museo Nacional de Cerámica, Valencia); e, green and brown bowl (Teruel) (Teruel: Museo Arqueológico de Teruel, Photo: Martínez Caviró 1991, Fig 250).

Colour Plate 2



a



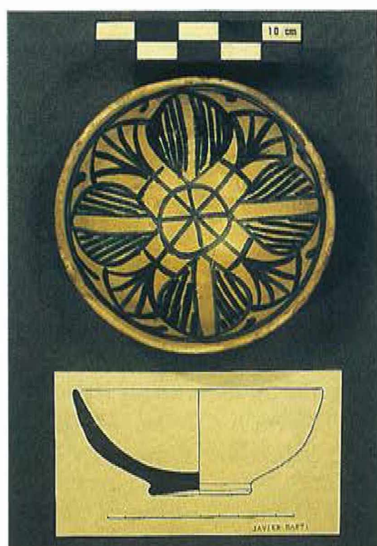
b



c



d



e

13th–15th century Spanish wares (see pp. 3–7). a, Green and brown plate (Catalonia) (Manresa, church of St Carmen: Museo Comarcal de Manresa); b, small Pula-type bowl (urban excavations in Valencia: SIAM, Valencia); c, Green and brown lebrillo ('Estilo esquemático') (urban excavations in Valencia: SIAM, Valencia); d, small green and brown bowl ('Estilo esquemático') (urban excavations in Valencia: SIAM, Valencia); e, small blue bowl ('Serie clásica') (Museo Nacional de Cerámica, Valencia).

Colour Plate 3



a



b



c



d

Imported pottery from London (see pp. 29–44). a, Saintonge polychrome jug c.1300–1350 from Montague Close, Southwark; b, stonewares. From left to right: Siegburg Trichterhalsbecher, c.1450 (Vintry); Siegburg jug with iron wash, c.1450 (Tower Postern); rouletted Langerwehe jug (Abbots Lane); Langerwehe jug, 1450–1500 (Tower Postern). Foreground: Beauvais drinking bowl and Raeren cooking pot (both c.1500–1530, Abbots Lane); c, polygonal albarello in Magrebi ware (left), Alkaline-glazed bowl, c.1400–30 (right). Both from Trig Lane; d, Mature Valencian lustreware pedestal jug, c.1450–1500 (Gateway House). Photographs: Museum of London Archaeology Service (3a–3c) and courtesy of the Museum of London (3d).

Colour Plate 4



a



b

Imported pottery from London (see pp. 29–44). a, A complete Paterna Blue bowl from St. Mary-at-Hill b, Paterna Blue bowls, c. 1400–50 from the Tower Postern. Photography: Museum of London Archaeology Service.



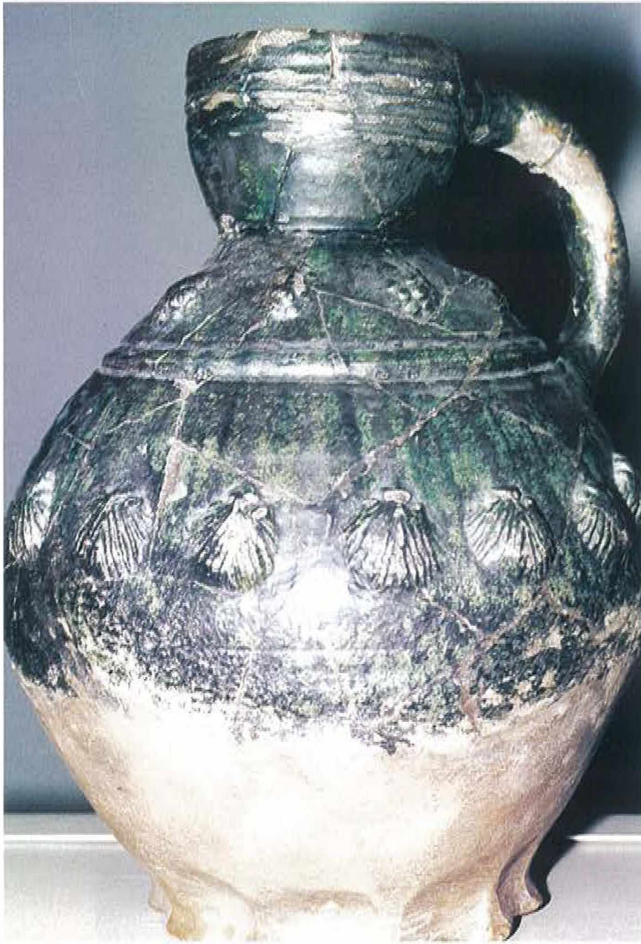
c



d

Iberian pottery from Antwerp (see pp. 9–20). c, Pedestal beaker or vase from the Bishop's Palace (Cat. no. 1); d, left: small bowl with lobed body from Schoytestraat (no. 13), right: pedestal beaker from Korte Clarenstraat (no. 3).

Colour Plate 5



a



c



b

Dutch redwares (see pp. 19–27). a, Jug found in the Wieringermeer, made in Utrecht c. 1200; b, jugs, wasters from Delft; c, jug found in Leeuwarden, made in Haarlem.

Colour Plate 6



a



b

a, A selection of Dutch redwares from c. 1500; b, a selection of Dutch redwares of the period 1600-1610 (see pp. 19-27).

Colour Plate 5



a



c



b

Dutch redwares (see pp. 19–27). a, Jug found in the Wieringermeer, made in Utrecht c. 1200; b, jugs, wasters from Delft; c, jug found in Leeuwarden, made in Haarlem.

Colour Plate 6



a



b

a, A selection of Dutch redwares from c. 1500; b, a selection of Dutch redwares of the period 1600-1610 (see pp. 19-27).