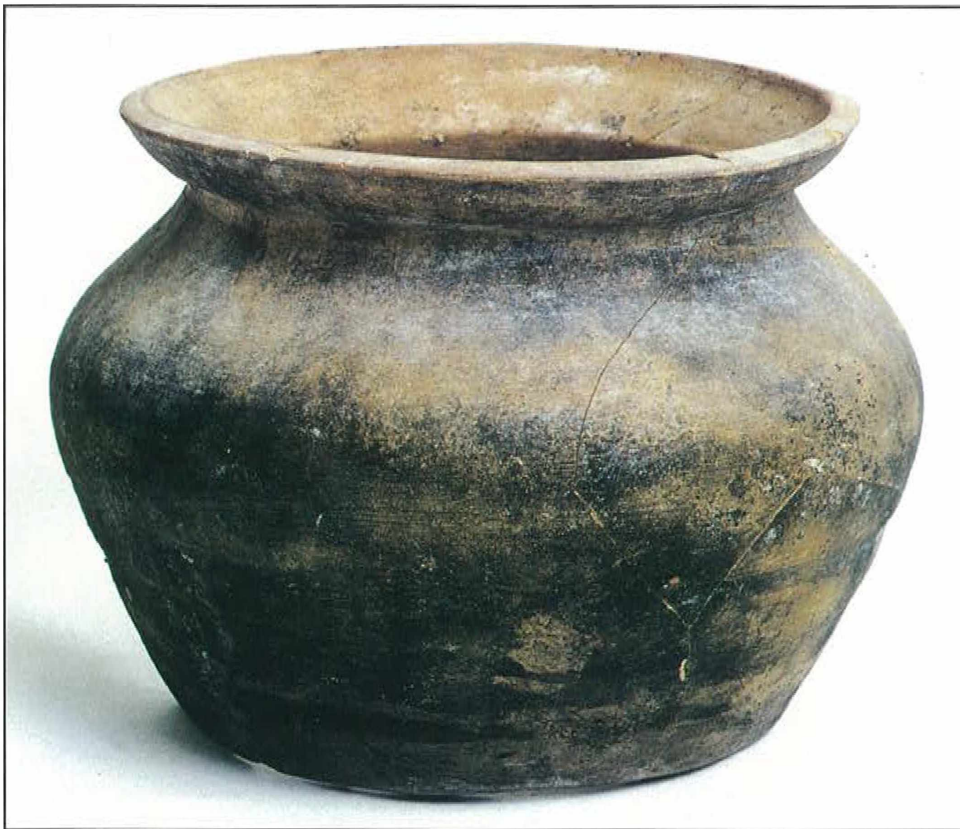


Colour Plate 1



a



b

*Medieval pottery from St. Albans (see pp. 45-65). a, LMHG jug (No. 45); b, LMHG jar (No. 55).*

Colour Plate 2



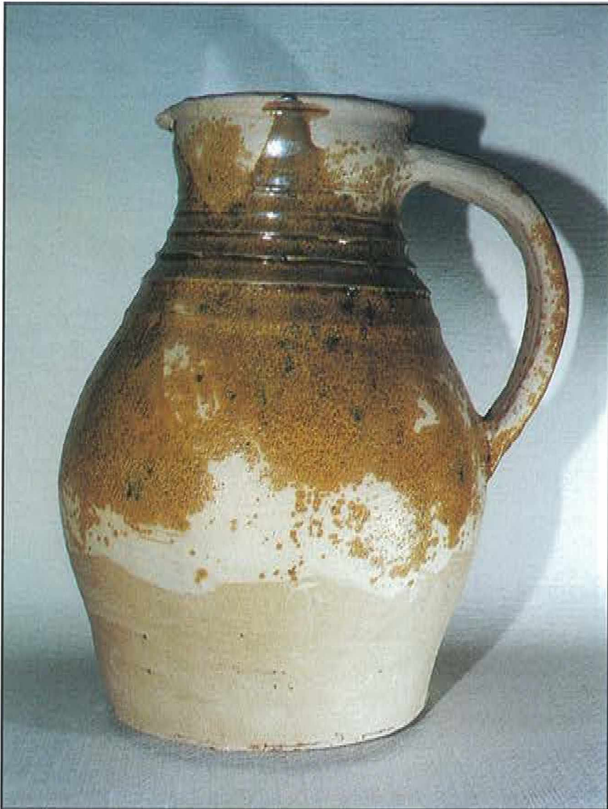
a



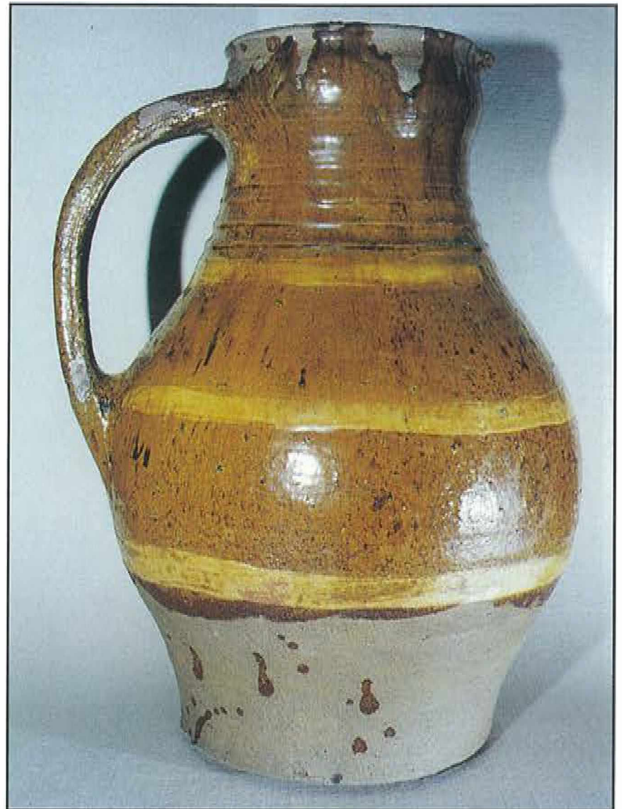
b

*Medieval pottery from St. Albans. a, LMHG sherds with stamped decoration (No. 68); b, group of decorated glazed medieval sherds, not drawn, including LMHG, probable Kingston-type ware, and unidentified to date.*

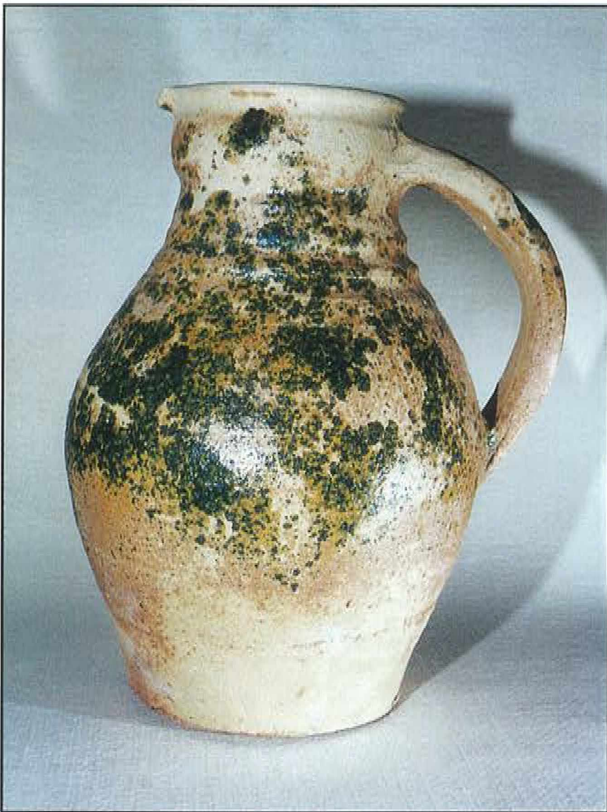
Colour Plate 3



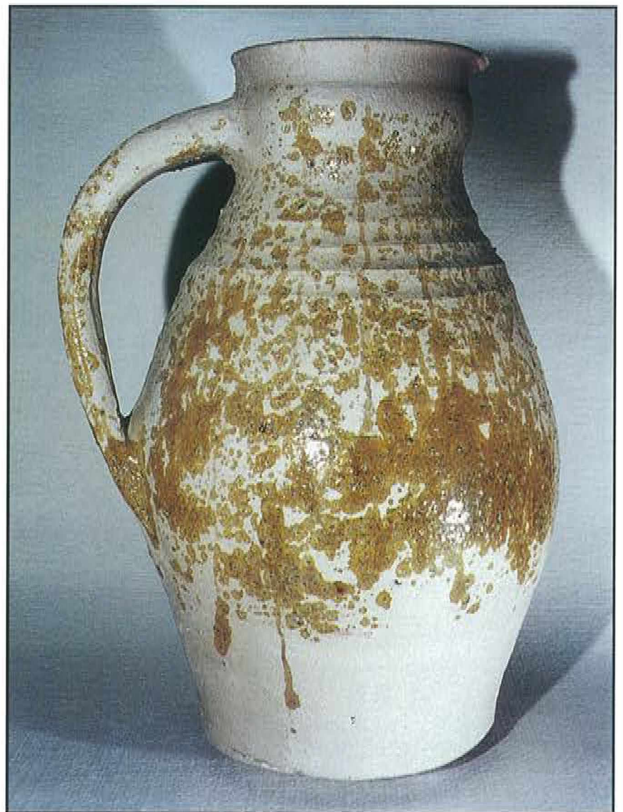
a



b



c



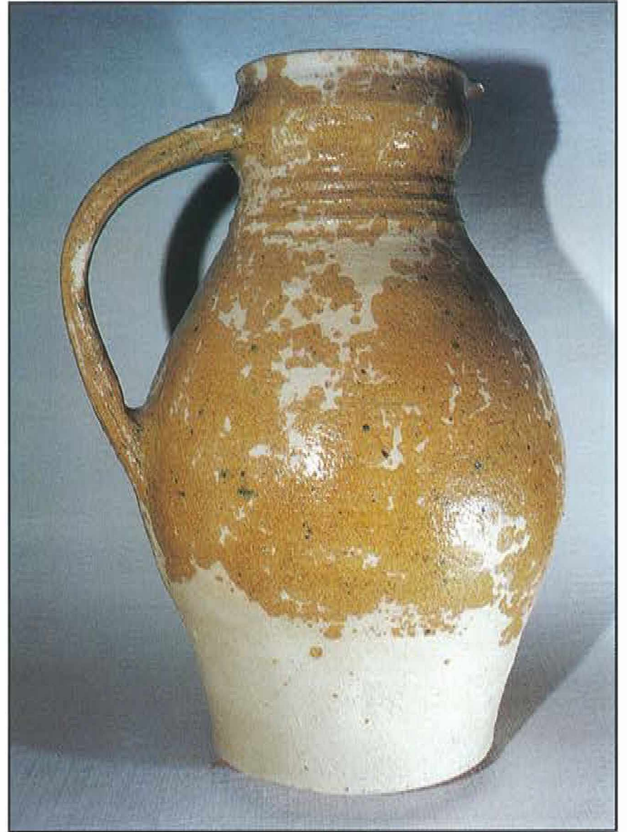
d

*Splashed glazes (see pp. 77-88). a, Granulated lead metal sprinkled on a finely sieved body clay slip binder, which appears lighter than the pot's body, (887°C) height 31 cm; b, medium- to fine-ground brushed galena glaze with a flour binder, (959°C) height 32 cm; c, litharge with copper filings sprinkled on a flour paste binder according to Eraclius's recipe, 913°C, neutral kiln atmosphere; height 29 cm; d, flour binder, (780°C) height 32 cm.*

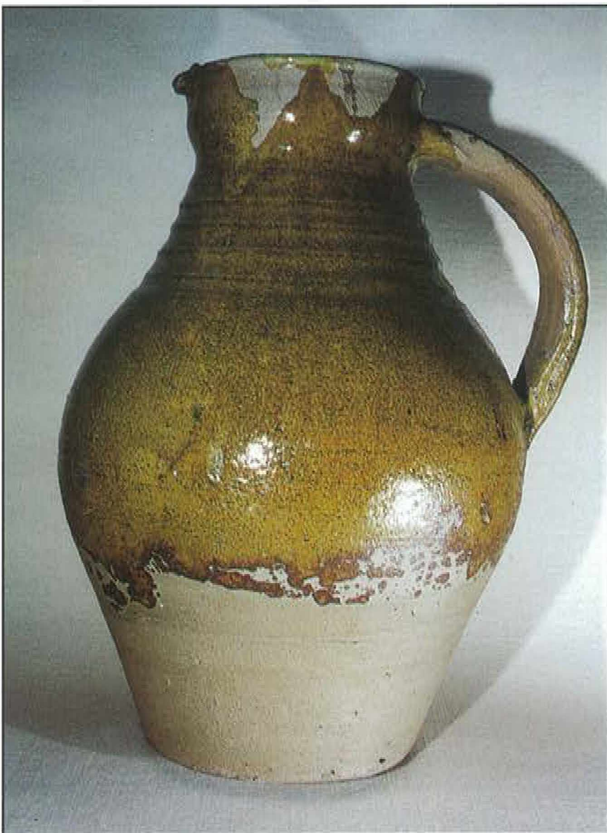
Colour Plate 4



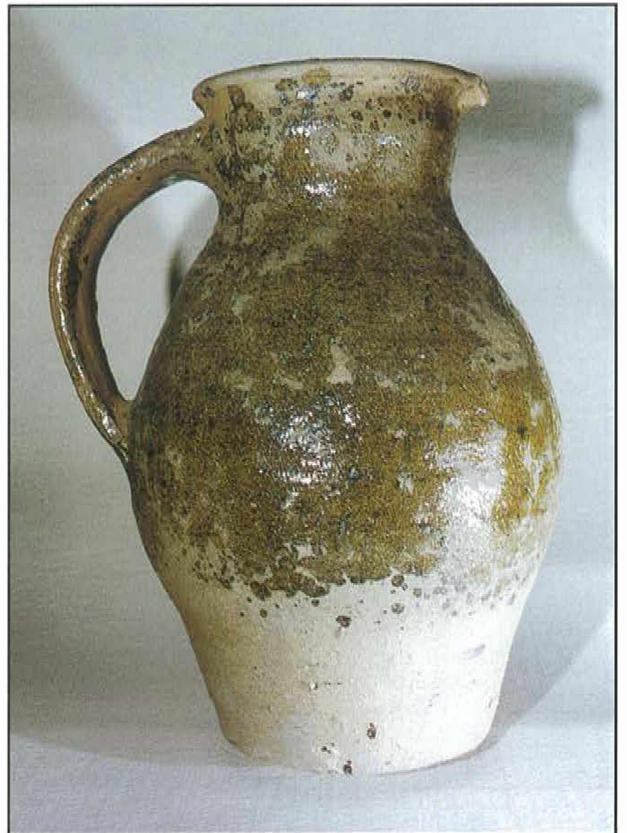
a



b



c



d

*Splashed glazes. a, Flour binder, 887°C; b, flour binder, 913°C; c, body clay binder, 973°C, reduction; height 36 cm; d, flour binder, 1010°C, reduction; height 28 cm.*