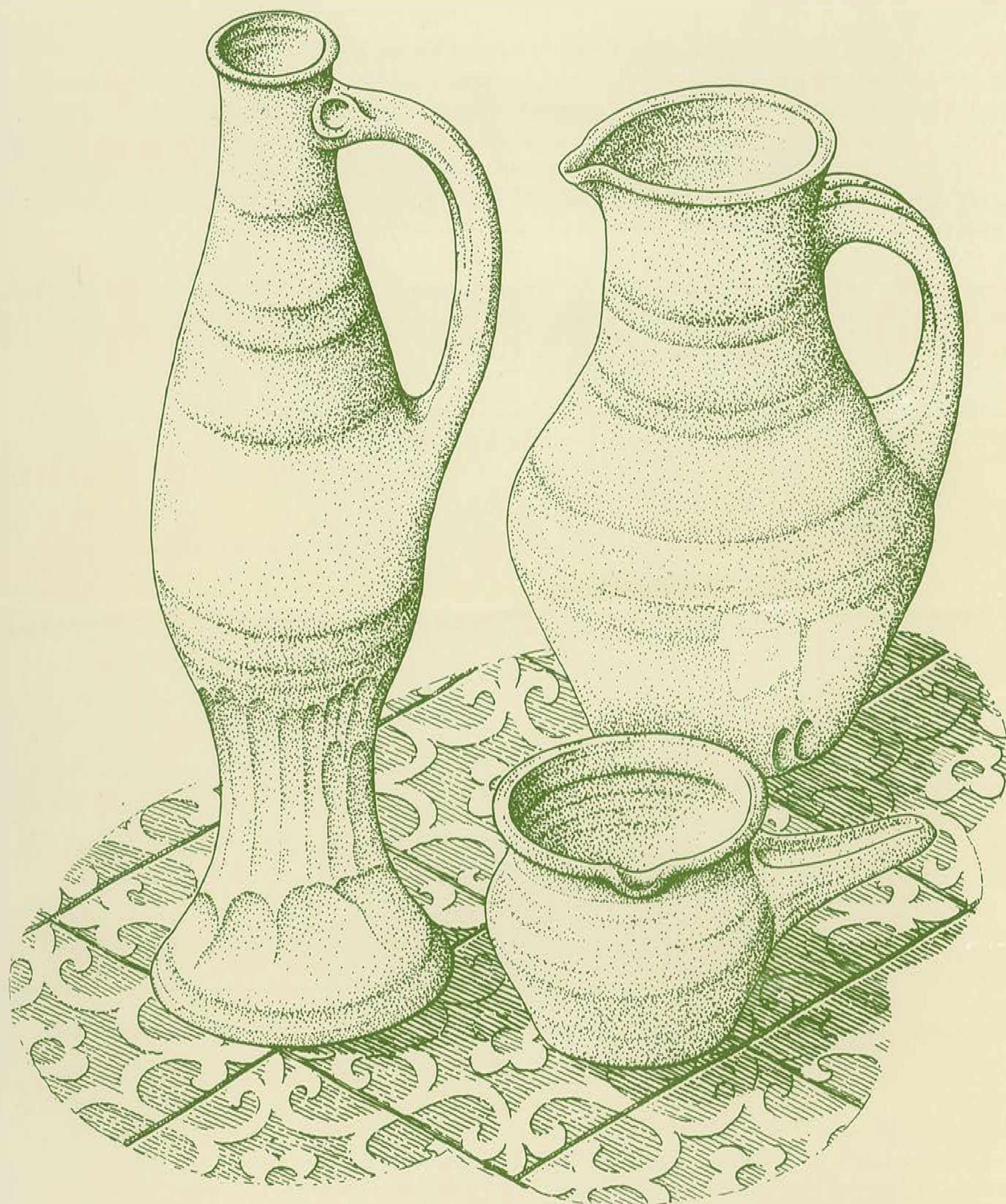


# Medieval Ceramics

Vol 20 1996



Journal of the Medieval Pottery Research Group

# MEDIEVAL CERAMICS

THIS JOURNAL was conceived to meet the need for an annual publication devoted to all aspects of pottery studies from the Early Saxon to the Post-Medieval period, including theoretical, methodological and analytical aspects of pottery research. An annual conference is held (usually in May) and meetings of regional groups take place at more frequent intervals. The Medieval Pottery Research Group has many Continental members whose work overlaps with that of British members. *Medieval Ceramics* welcomes offers of appropriate articles on all aspects of ceramic research for publication. Notes for contributors are given overleaf.

All general correspondence concerned with the Medieval Pottery Research Group should be sent to The Secretary, MPRG, c/o Department of Medieval and Later Antiquities, The British Museum, London WC1B 3DG.

MEMBERSHIP All applications for membership, subscriptions and orders for *Medieval Ceramics* should be sent to The Treasurer, MPRG, at the same address.

SUBSCRIPTION RATES	Individual	£10
	Institutional	£13

\* The MPRG is a Registered Charity, No. 1018513.

Copyright © Individual authors

ISSN 1358-2496

*The cover design by Graham Reed is based on a narrow-necked baluster jug, a rounded jug and a pipkin in Kingston-type ware of early 14th-century date from the Eden Street kiln, published in this volume (Stephenson and Miller, pp. 71–74).*

*Border designs inside are based on the complex rouletted patterns on 13th-century Monnow Valley ware (drawn by Lyn Harper).*

# Medieval Ceramics

VOLUME 20

1996

EDITORS

**Katherine Barclay**  
Winchester Research Unit

**Michael Hughes**  
British Museum

ASSISTANT EDITOR

**Jacqueline Pearce**  
Museum of London Archaeology Service

Published by The Medieval Pottery Research Group

Typeset by Avon Dataset Ltd, Bidford-on-Avon, Warwickshire and  
printed by Warwick Printing Co. Ltd, Warwick, Warwickshire CV34 4DR.

## LIST OF OFFICERS AND COUNCIL OF THE GROUP 1996-7

President	J. Charles Murray (i) Alan Vince (ii)
Vice-President	Maureen Mellor*
Secretary	Duncan H. Brown
Assistant Secretary	Julie Edwards*
Treasurer	Paul Miles
Assistant Treasurer	Anna Slowikowski*
Editors	Katherine Barclay* Michael Hughes*
Assistant Editor	Jacqueline Pearce*
Regional Groups Officer	Beverley Nenk*
Meetings Secretary	Victoria Buteux
Ordinary Members	Paul Blinkhorn Christopher Cumberpatch (ii) Christopher Gerrard (i) David Higgins* Barbara Hurman (i)* Irene Lentowicz Judy O'Neill (ii) Helen Walker
Co-opted members	Audrey Gahan Frans Verhaeghe

(i) Until May 1996      (ii) From May 1996

\* Denotes member of the Editorial Committee

### Notes for Contributors

Articles can be submitted at any time, but must be received by August 31st for consideration for the volume to be published the following year.

Manuscripts should not normally exceed 3000 words in length; they should contain a brief summary (100-150 words) for translation into other languages. They should be typed on good quality A4 paper, double-spaced and with a good left-hand margin (30mm). Authors are requested to follow the layout and conventions used in this journal (a style sheet is available on request). Three copies of the manuscript should be sent to:

The Editors, MPRG, c/o Department of Medieval and Later Antiquities, The British Museum, Great Russell Street, London WC1B 3DG

Galley proofs will be sent to all authors for checking (not re-writing). Failure to return the proofs by the required date will lead to the editors sending their own corrected proofs to the printer without further reference to the author. Ten free off-prints will be supplied to the authors on publication of a paper; two free off-prints will be sent to authors of shorter contributions.

All statements and views published in *Medieval Ceramics* are those of the contributors, and are not the responsibility of the editors or the MPRG.

# MEDIEVAL CERAMICS 20, 1996

## Contents

### Editorial

<i>K. Barclay and M. Hughes</i> .....	1
The Late Medieval Pottery Industry on the North Suffolk Border <i>S. Anderson, J. Caruth and D. Gill</i> .....	3
Lead Glazing Technique from a Medieval Kiln Site at Hanley Swan, Warwickshire <i>D. Hurst and I. C. Freestone</i> .....	13
Glazed Eleventh-Century Wall Tiles from London <i>I. M. Betts</i> .....	19
Results of Neutron Activation Analysis on Tating Ware and the Mayen Industry <i>H. Stilke, A. Hein and H. Mommsen</i> .....	25
Middle Meuse Valley Ceramics of Huy-type: a Preliminary Analysis <i>W. Giertz</i> .....	33

### Compendiario:

A Complete Anthropomorphic/zoomorphic Jug from Aberdeen <i>A. Cameron</i> .....	65
The Dean's Dump? or The Merchant of Stafford? <i>D. A. Ford and A. Gutiérrez</i> .....	67
Interim Statement on the Excavation of a Medieval Kiln Site at Eden Street, Kingston Upon Thames <i>R. Stephenson and P. Miller</i> .....	71
The Age of Transition: the Archaeology of English Culture 1400–1600 .....	74
MPRG 1997 Annual Conference at Worcester .....	75
Obituaries: Group Captain Frank Britton, Lady Teresa Briscoe and Professor Martin Jope .....	76

### Reviews:

D. Hook and D. Gaimster (eds.) <i>Trade and Discovery: the scientific study of artefacts from post-medieval Europe and Beyond</i> (C. Orton) .....	79
M. Mellor <i>Oxfordshire Pottery: a synthesis of middle and late Saxon, medieval and early post-medieval pottery in the Oxford Region</i> (A. Slowikowski) .....	79
M. Redknap and J. G. Perry 'Medieval and later pottery', in <i>The Excavations at Broadgate East, Coventry 1974–5</i> (D. A. Ford) .....	80
J. C. Austin <i>British Delft at Williamsburg</i> (R. Stephenson) .....	81
P. Kleij, <i>Oosterhouts Aardewerk, Assembled Articles 2</i> (S. Ostkamp) .....	82
P. Bitter <i>Geworteld in de bodem. Archeologisch en historisch onderzoek van een pottenbakkerij bij de Wortelsteeg in Alkmaar</i> (E. M. Ch. F. Klijn) .....	82
G. Sveinbjarnardóttir <i>Leiker á Íslandi. Pottery Found in Excavations in Iceland</i> (D. Gaimster) .....	83

MPRG Annual Bibliography <i>collated by D. Higgins and P. Davey</i> .....	85
MPRG Accounts 1995–6 .....	100
Regional Group Reports .....	102
Colour Plates .....	104