

Colour Plate 1



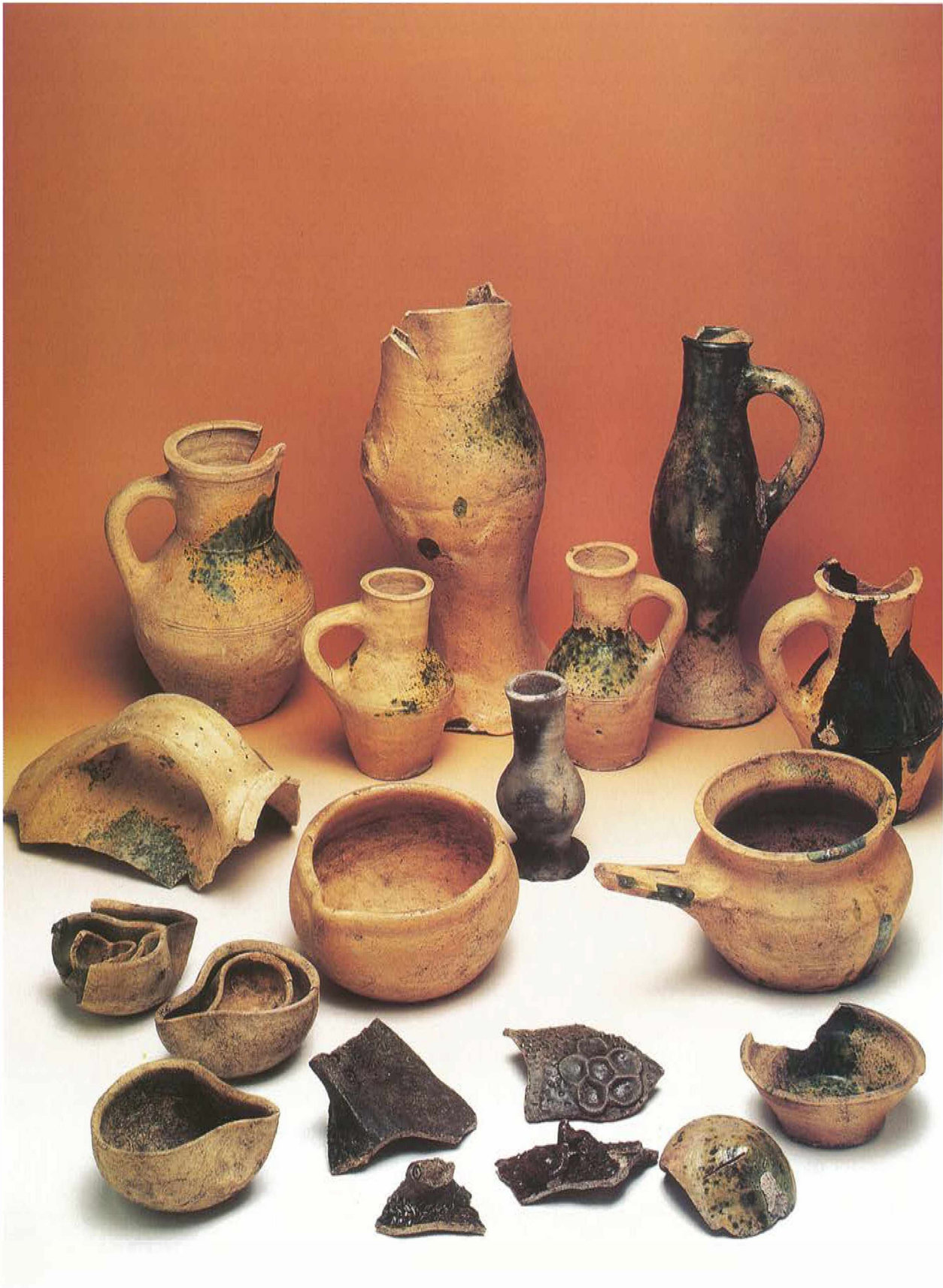
a



b

*Spanish lustrewares in Stafford. a, (see pp. 67–71) outer face and interior decoration; b, exterior decoration of interior decorated pieces..*

Colour Plate 2



*A medieval kiln site at Eden Street, Kingston upon Thames (see pp. 71–74): a selection of the vessels recovered, including baluster jugs, drinking jugs, rounded jugs, crucibles, a dish, a money box fragment and decorated sherds including anthropomorphic fragments. (photo MoLAS).*



Colour Plate 3



*Glazed eleventh-century wall tiles from London in Cheyneygates, Westminster Abbey, showing decorative arrangement of stone blocks and glazed wall tiles. Photograph by courtesy of the Dean and Chapter of Westminster Abbey (see pp. 19–24).*



