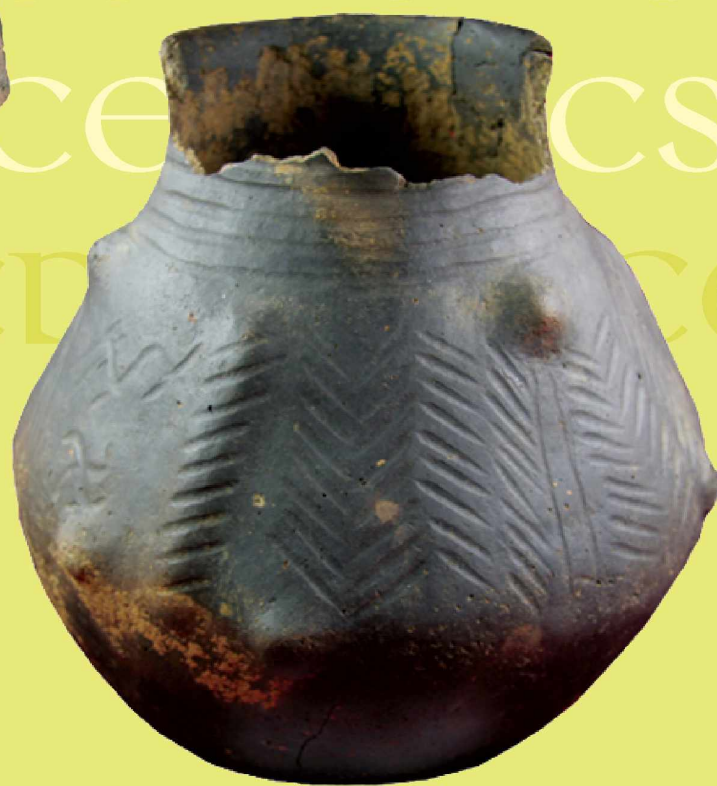


MEDIEVAL CERAMICS
AMICS

medieval ceramics

Volume 32 2011



JOURNAL OF THE MEDIEVAL POTTERY RESEARCH GROUP

medieval ceramics

THIS JOURNAL was conceived to meet the need for an annual publication devoted to all aspects of pottery studies from the Early Saxon to the post-medieval period, including theoretical, methodological and analytical aspects of pottery research.

An annual conference is held (usually in May) and meetings of regional groups take place at more frequent intervals. The Medieval Pottery Research Group has many Continental members whose work overlaps with that of British members. *Medieval Ceramics* welcomes offers of appropriate articles on all aspects of ceramic research for publication.

Notes for contributors are given on page iv.

All general correspondence concerned with the Medieval Pottery Research Group should be sent to the Secretary, MPRG, c/o Museum of London Specialist Services, Mortimer Wheeler House, 46 Eagle Wharf Road, London N1 7ED.

Membership

All applications for membership, subscriptions and orders for *Medieval Ceramics* should be sent to the Treasurer, MPRG, at the same address.

Subscription rates

Individual £20

Institutional £25

The Medieval Pottery Research Group is a Registered Charity, No 1018513.

Copyright Individual authors

ISSN 1358 2496

Published by The Medieval Pottery Research Group

Designed and typeset by Christina Unwin

e-mail christina@wave.demon.co.uk

Printed by Farquhar and Son Ltd, Perth

The cover design shows Urn 544 from Cleatham, North Lincolnshire (courtesy Gareth Perry), a fragment of Antwerp-made maiolica tile from Jeffrey Street, Edinburgh (courtesy Julie Franklin) and a Cistercian Ware vessel from Melrose Abbey (courtesy Historic Scotland).

medieval ceramics

Volume **32** 2011

co-editors

Derek Hall Archaeologist and ceramic specialist

Chris Jarrett Pre-Construct Archaeology Ltd

JOURNAL OF THE MEDIEVAL POTTERY RESEARCH GROUP

Notes for contributors

Contributions can be submitted at any time, but main papers, which are subject to peer review, must be received by 31st August for consideration for the volume to be published the following year.

Manuscripts should contain a brief summary (100–150 words) for translation into other languages. They should be typed or printed on good quality A4 paper, double-spaced and with a good left-hand margin (30 mm). Authors are requested to follow the layout and conventions used in this journal. Three copies of the manuscript with drafts of all artwork and tables should be sent to: Derek Hall., Co-Editor, MPRG, 34 Glenfarg Terrace, Perth, PH2 0AP.

Authors, where feasible, should make every effort to ensure that their contribution comes with some publication grant aid.

Proofs will be sent to all authors for checking (not re-writing). Failure to return the proofs by the required date will lead to the editors sending their own corrected proofs to the printer without further reference to the author. A pdf version of the paper on disc will be supplied to the authors on publication of a paper.

All statements and views published in *Medieval Ceramics* are those of the contributors, and are not the responsibility of the editors or the Medieval Pottery Research Group.

For guidelines in detail, please see pages 91–3.

Contents

iv **Editorial** Derek Hall

Papers

- 1 The twenty-ninth Gerald Dunning Memorial Lecture **The mystery of the missing miskins**
Rubbish disposal and dispersal in a medieval urban context Victoria Bryant
- 9 **Beer, butter and burial**
The pre-burial origins of cremation urns from the early Anglo-Saxon cemetery of Cleatham, North Lincolnshire
Gareth Perry
- 23 **Beer jugs, wine bottles and floor tiles – changing ceramic use in post-medieval Edinburgh**
The evidence from Jeffrey Street Julie Franklin
- 35 **Medieval pottery in East Hampshire** Ben Jervis
- 55 **Midland Purple and Cistercian Wares in the West Midlands 15th–16th centuries**
J Derek Hurst and Susan M Wright

Reviews

- 67 **Ian M Betts and Rosemary I Weinstein**
Tin-glazed tiles from London
Jim Gray
- 70 **Anne Boucquet-Liénard and Bruno Fajal (eds)**
À propots de l'usage, de la production et de la circulation des terres cuites dans l'Europe du Nord-Ouest autour des
XIV^e–XVI^e siècles
Ben Jervis
- 71 **Fabienne Ravoire and Anne Dietrich**
La cuisine et la table dans la France de la fin du Moyen Âge
Duncan Brown
- 72 **A M Slowikowski**
'Genius in a cracked pot': Late Medieval Reduced Ware: a regional synthesis
Lucy Whittingham

News

- 67 **Obituary** Geoff Egan
- 68 **Obituary** Jean Le Patourel
- 73 **Obituary** Gareth Watkins

Office

- 87 **List of Officers and Council of the Group 2010**
- 88 **Accounts for 2010**
- 89 **Constitution of the Medieval Pottery Research Group**
- 91 **Information and notes for contributors**