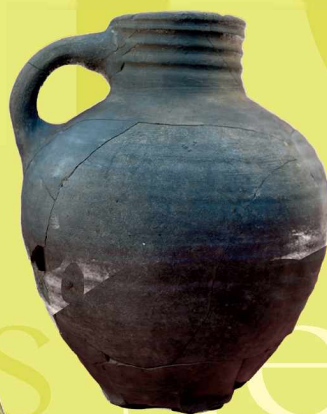


MEDIEVAL CERAMICS
AMICS

medieval ceramics

Volume **35** 2014



JOURNAL OF THE MEDIEVAL POTTERY RESEARCH GROUP

medieval ceramics

THIS JOURNAL was conceived to meet the need for an annual publication devoted to all aspects of pottery studies from the Early Saxon to the post-medieval period, including theoretical, methodological and analytical aspects of pottery research.

An annual conference is held (usually in May) and meetings of regional groups take place at more frequent intervals. The Medieval Pottery Research Group has many Continental members whose work overlaps with that of British members. *Medieval Ceramics* welcomes offers of appropriate articles on all aspects of ceramic research for publication.

Notes for contributors are given on page iv.

All general correspondence concerned with the Medieval Pottery Research Group should be sent to the Secretary, MPRG, c/o Museum of London Specialist Services, Mortimer Wheeler House, 46 Eagle Wharf Road, London N1 7ED.

Membership

All applications for membership, subscriptions and orders for *Medieval Ceramics* should be sent to the Treasurer, MPRG, at the same address.

Subscription rates

Individual £20
Institutional £25

The Medieval Pottery Research Group is a Registered Charity, No 1018513.

Copyright Individual authors

ISSN 1358 2496

Published by The Medieval Pottery Research Group

Designed and typeset by Christina Unwin
e-mail christina@wave.demon.co.uk

Printed by Farquhar and Son Ltd, Perth

The cover design shows a Graffita rinascimentale vessel from the nunnery of Sao Paulo, Modena, Italy (courtesy of Cecilia Moine), a sherd of Maiolica Polychrome from Deruta found in the Alhambra, Granada (courtesy of Raffaella Carta) and a complete Low Countries Greyware pitcher from excavations at Bishop's Close, Brechin (courtesy of Murray Archaeology).

medieval ceramics

Volume **35** 2013

co-editors

Derek Hall

Archaeologist and Ceramic Specialist
Perth, Scotland

Chris Jarrett

Pre-Construct Archaeology
London

JOURNAL OF THE MEDIEVAL POTTERY RESEARCH GROUP

Notes for contributors

Contributions can be submitted at any time, but main papers, which are subject to peer review, must be received by 31st August for consideration for the volume to be published the following year.

Manuscripts should contain a brief summary (100–150 words) for translation into other languages. Authors are requested to follow the layout and conventions used in this journal. A digital copy of the proposed submission should be emailed to or sent on disc to:

Derek Hall, Co-Editor, MPRG,
34 Glenfarg Terrace, Perth, PH2 0AP.

Authors, where feasible, should make every effort to ensure that their contribution comes with some publication grant aid.

Proofs will be sent to all authors for checking (not re-writing). Failure to return the proofs by the required date will lead to the editors sending their own corrected proofs to the printer without further reference to the author. A pdf version of the paper on disc will be supplied to the authors on publication of a paper.

All statements and views published in *Medieval Ceramics* are those of the contributors, and are not the responsibility of the editors or the Medieval Pottery Research Group.

For guidelines in detail, please see pages x–x.

Contents

iv **Editorial** Derek Hall

Papers

1 The pottery of Khirbet Beit Bassa Ibrahim

Abu Aemar and Jose C Carvajal

**13 The commerce of Italian ceramic products
from the end of the middle ages to the modern age**

The case of Granada

Raffaella Carta

25 A programme of ICP analysis on medieval pottery from Bishop's Close, Brechin

George Haggarty and Michael Hughes

31 XRF analysis of 18th-century Black Glazed pottery

Peter Davey, Michael Hughes and Christine Longworth

41 Reforming the table

Table ware and cooking pots from the excavations of San Paolo in Modena, Italy (15th–16th century)

Cecilia Moine and Lara Sabbionesi

53 A medieval bird shaped lamp or 'salt' from Norwich

Pat Chapman and Paul Blinkhorn

Reviews

57 Catherine Hills and Sam Lucy

Spong Hill . Part IX Chronology and synthesis

Alex Bayliss, John Hines, Karen Høilund Nielsen, Gerry McCormac and Christopher Scull

Anglo-Saxon graves and grave goods of the 6th and 7th centuries AD : a chronological framework

Sue Anderson

59 Ben Jervis

Pottery and Social Life in Medieval England

Chris Cumberpatch

63 Clive Orton and Michael Hughes

Pottery in Archaeology (second edition)

Duncan Brown

66 Joanita Vroom

Byzantine to Modern Pottery in the Aegean: an introduction and field guide (second edition)

Ben Jervis

Office

71 List of Officers and Council of the Group 2012

72 Constitution of the Medieval Pottery Research Group

74 Information and notes for contributors