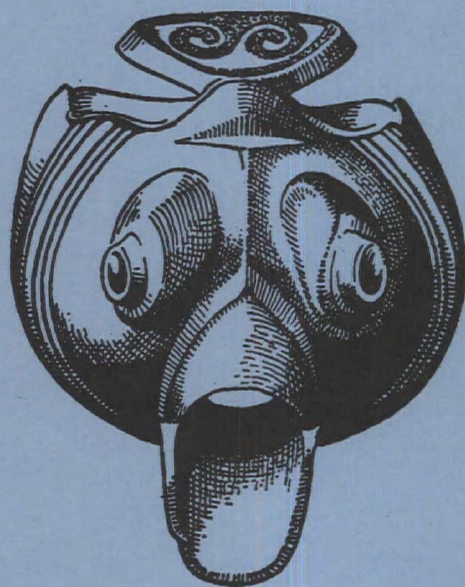


BEDFORDSHIRE
ARCHAEOLOGICAL
JOURNAL



VOLUME 12

1977

**The BEDFORDSHIRE ARCHAEOLOGICAL JOURNAL is published by the
BEDFORDSHIRE ARCHAEOLOGICAL COUNCIL**

Additional copies may be purchased from the Hon. Treasurer at 63 Ampthill Road, Maulden, Bedford, price £4.00, plus postage. The price to regular subscribers is £3.50, plus postage. Members of the constituent societies of the Bedfordshire Archaeological Council enjoy a reduced subscription of £2.50, plus postage where appropriate;

Contributions and matter for review should be sent to the Editor, the Bedfordshire Archaeological Journal, 497 Hitchin Road, Stopsley, Luton, Bedfordshire, LU2 7TT.

Manuscripts should be typed on good quality paper with double spacing and a broad left-hand margin; photographs should be of at least half-plate size; and line illustrations should be of a size proportional to the page size of the journal, wheresoever possible, and must be fully lettered at a size suitable for the intended reduction. (Notes for contributors are available on request).

The Bedfordshire Archaeological Council:

<i>Chairman</i>	:	R. Fowler
<i>Secretary</i>	:	Miss E.G. Cole
<i>Assistant Secretary</i>	:	J.M. Bailey
<i>Treasurer</i>	:	B.D. Lazelle
<i>Editor</i>	:	David H. Kennett

together with representatives of the archaeological societies and museums of the county:

Ampthill and District Archaeological and Local History Society:

K.J. Fadden, B.D. Lazelle, Miss J.M. Sewell.

Bedford Archaeological Society:

P.G. Tilson.

Bedford College of Higher Education:

R.M. Smart

Bedford Museum:

Miss J.M. Hassall, F.W. Kuhlicke, H.J. Turner.

Conservation Section, Planning Department, Bedfordshire County Council:

D.B. Baker, Miss A.H. Simco.

Dunstable Historic Buildings Research Group:

J.M. Bailey.

Higham Ferrers Hundred Archaeological Society:

D.N. Hall, J.B. Hutchings.

Luton Museum:

F. Hackett, R.K. Hagen.

Manshead Archaeological Society of Dunstable:

R. Fowler, C.L. Matthews, Mrs J.M. Schnieder.

North Bedfordshire Archaeological Society:

Miss E.G. Cole, J. Moor, S. Moor.

Putteridge Bury College of Education:

J. Dyer.

Shefford and District Local History Society:

R.K. Hagen

South Bedfordshire Archaeological Society:

D.H. Kennett, T.P. Smith

Material in the *Bedfordshire Archaeological Journal* is copyright. The views expressed by individual contributors are their own and do not necessarily reflect those of the Bedfordshire Archaeological Council.

BEDFORDSHIRE
ARCHAEOLOGICAL
JOURNAL

Volume 12 1977

THE BEDFORDSHIRE ARCHAEOLOGICAL COUNCIL

**The BEDFORDSHIRE ARCHAEOLOGICAL JOURNAL is published by the
BEDFORDSHIRE ARCHAEOLOGICAL COUNCIL**

Additional copies may be purchased from the Hon Treasurer at 63 Ampthill Road, Maulden, Bedford, price £4.00, plus postage. The price to regular subscribers is £3.50, plus postage, and members of the constituent societies of the Bedfordshire Archaeological Council enjoy a reduced subscription of £2.50 plus postage where appropriate.

Bedfordshire Archaeological Journal, 12, 1977
was edited and designed by David H. Kennett
with additional proof-reading by
Richard Hagen, Jane Hassall, and John Hutchings.

ISSN: 0408-7666

CONTENTS

Radwell Excavations, 1974-1975: the Bronze Age ring ditches By David Hall and Peter J. Woodward	1
Shale Vessels of the Late Pre-Roman Iron Age: Context, Distribution and Origins By David H. Kennett	17
A Roman Lime Kiln near Cardington Mill, Bedford By R.F. White	23
Excavations at Pear Tree Farm, Elstow, Bedfordshire, 1976 By P.J. Woodward	27
A Cruck Frame Building at Sharnbrook By P.J. Woodward	55
Crowhill Farm, Bolnhurst, Bedfordshire: A Timber-Framed Building and its History By David H. Kennett and Terence Paul Smith	57
'Rowe's Cottage': a 'Wealden' House at Little Barford, Bedfordshire By J.M. Bailey	85
Lower Roxhill Farm, Marston Moretaine: a measured survey of a timber- framed building By J.M. Bailey	99

LIST OF ILLUSTRATIONS

Radwell Excavations, 1974-1975: the Bronze Age ring ditches

Plate	1	The central cremation urn from Ring Ditch I <i>in situ</i>	7
	2	The reconstructed necklace from the central cremation urn, Ring Ditch I	7
	3	Excavations Trench (Ring Ditch II)	13
Fig	1	Area Plan	1
	2	Plan of Ring Ditch	2
	3	The central cremation urn from Ring Ditch I	3
	4	The grave goods from Ring Ditch I and the small finds from Ring Ditch II	5
	5	Site Plan and sections of Ring Ditch II	9
	6	Flint Analysis	10
	7	Plan of Ring Ditch III	14

Shale Vessels of the Late Pre-Roman Iron Age: Context, Distribution and Origins

Fig	1	Reconstructable fragments of the shale vases from the Harpenden burial	17
	2	Shale Vases and Iron Age Burials	18
	3	The Catuvellauni and Cultural Poverty	19
	4	The Barnwell Tazza	20

A Roman Lime Kiln near Cardington Mill, Bedford

Plate	1	Lime Kiln under excavation	25
Fig	1	Plan and section	24

Excavations at Pear Tree Farm, Elstow, Bedfordshire, 1976

Plate	1	The cropmarks at Pear Tree Farm, Elstow	29
	2	The drilled cow tibia from Odell and Elstow	48 and 49
Fig	1	Cropmarks at Pear Tree Farm, Elstow: site plans	28
	2	Excavation Area D	31
	3	Plan of Trenches A, B, C	33
	4	Sections: Iron Age features	36
	5	Sections: medieval features	37
	6	Pottery analysis	40
	7	St Neots type shelly ware pottery	43
	8	Other Medieval and Romano-British wares	44
	9	Hand made Iron Age and (?) Saxon pottery	45
	10	Small finds	47
	11	Drilled Tibia	50
	12	Numerical analysis of knapped flint material	51
	13	Ditch colourings	52
	14	Ditch colourings by period	53

A Cruck Frame Building at Sharnbrook

Fig	1	The cruck-frame building at Sharnbrook	56
-----	---	--	----

Crowhill Farm, Bolnhurst, Bedfordshire: a Timber-Framed Building and its History

Plate 1	General views of medieval building from north, 1973 and 1976	77
2	General view from south, 1973; central chimneys, 1976	78
3	East wing with details of stack, 1973 and 1976; general view from north, 1976	79
Fig 1	Bedfordshire vernacular buildings: publication	59
2	Bolnhurst in 1575: buildings and landownership	60
3	The context of Moore's Farm, Bolnhurst, in the late-sixteenth to early-eighteenth centuries	62
4	The Fields of Crowhill in 1858	63
5	Immediate location of farmhouse and farm buildings	66
6	Plans and long section	68
7	The wing: sections and elevations	69
8	Section through hall	70
9	Reconstruction of hall-house and wing	71
10	Chimney stack	72
11	Panel infilling	73
12	Scarf-joint: hall wall-plate	74
13	Scarf-joint: wing wall-plate	74
14	Chamfer-stops	75

'Rowe's Cottage': a 'Wealden' House at Little Barford, Bedfordshire

Plate 1	'Rowe's Cottage', Little Barford, before dismantling	85
2	'Rowe's Cottage', Little Barford, without infill material during dismantlings	89
3	'Wealden' House at Box End, Kempston	96
Fig 1	The distribution of the 'Wealden House' outside of the primary areas	86
2	Plans and elevations before stripping	88
3	Elevations, sections and details	90
4	Original timber-framed building: plans, elevations and sections	91
5	Reconstruction of original 'Wealden House'	92
6	Original west front	93
7	Carpentry details	94

Lower Roxhill Farm, Marston Moretaine: a measured survey of a timber-framed building

Plate 1	General view from east	104
2	General view of east wing	106
Fig 1	Plans, elevations and longitudinal sections	100
2	Elevations and sections	101
3	North-East wing	102
4	South-West wing	103
5	Composite isometric view	105

Notes on Contributors

J.M. BAILEY is the assistant secretary of the Bedfordshire Archaeological Council. His work on buildings in Bedfordshire includes the preparation of a survey of the surviving fragment of the sixteenth-century brick manorhouse at Warden Abbey. His work in the vernacular field has concentrated on the parishes of Dunstable, Elstow and Leighton Buzzard together with the examination of individual buildings at Sun House, Sun Street, Potton, and at Hardwick End, Keysoe. He has contributed to *Medieval Archaeology*; his study of Calcutt Farm, Houghton Regis, appeared in *Bedfordshire Archaeological Journal*, 10, 1975.

DAVID HALL MA is Fenland, Field Officer, Cambridgeshire Archaeological Committee, and the secretary of the Higham Ferrers Hundred Archaeological Society. He has been active in fieldwork and excavation in Bedfordshire and Northamptonshire for many years. His publications include *Wollaston, Portrait of a Village*, (1977), and contributions to national and Northamptonshire periodicals and previous issues of the *Bedfordshire Archaeological Journal*.

DAVID H. KENNETT is an historian, archaeologist and cartographer whose especial interests include the archaeology of the cemeteries of the Volkerwanderungszeit and the rural society unaffected by industrialisation. He has written extensively on Anglo-Saxon cemeteries for the periodicals covering the area of the rivers of the Wash and has recently published a volume on *Anglo-Saxon Pottery*. He is working towards the total publication of the cemetery found on the cricket field of St John's College, Cambridge, in 1888. He is the editor of the *Bedfordshire Archaeological Journal*.

TERENCE PAUL SMITH BA MA MLitt is sometime Traherne Scholar, St David's College, Lampeter, and a member of St John's College, Cambridge. He has contributed studies of early brick buildings to a number of learned periodicals and his papers on vernacular buildings have appeared in *Vernacular Architecture*, the *Proceedings of the Cambridge Antiquarian Society*, the *Dartford Historical and Antiquarian Society Newsletter*, *Hertfordshire Archaeology* and previous issues of the *Bedfordshire Archaeological Journal*.

R.F. WHITE BSc studied environmental science at the University of East Anglia and is now employed by the Conservation Section, Planning Department, Bedfordshire County Council, as a Field Supervisor engaged on parish surveys.

PETER J. WOODWARD BA BArch received an architectural education at Bristol University and was subsequently a Field Officer for the Conservation Section, Planning Department, Bedfordshire County Council. He is now Rural Officer for the Dorset Archaeological Committee. He has contributed papers to the *Archaeological Journal* and to previous issues of the *Bedfordshire Archaeological Journal*.