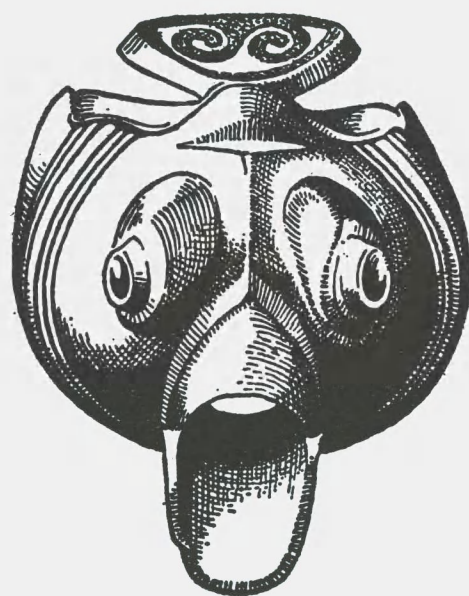


BEDFORDSHIRE
ARCHAEOLOGICAL
JOURNAL



VOLUME IV 1969

The BEDFORDSHIRE ARCHAEOLOGICAL JOURNAL is published by the BEDFORDSHIRE ARCHAEOLOGICAL COUNCIL. Additional copies may be obtained from the Hon. Treasurer at 63 Amphill Road, Maulden, Bedfordshire, price 2 guineas (£2.10p). Members of the constituent societies of the Bedfordshire Archaeological Council enjoy a reduced subscription of 35s. (£1.75p).

CONTRIBUTIONS AND MATTER FOR REVIEW should be sent to the Editor, the Bedfordshire Archaeological Journal, 55 Mount Grace Road, Stopsley, Luton, Bedfordshire.

Manuscripts should be typed with double spacing, photographs should be at least of half-plate size, and line illustrations should be of a size proportionate to the page size of the journal, wherever possible. (Notes for contributors are available on request.)

Chairman: James Dyer, Esq.

Secretary: L. A. Speed, Esq.

Assistant Secretary: Miss E. G. Cole

Treasurer: B. D. Lazelle, Esq.

Editor: David H. Kennett, Esq.

The Council consists of the representatives of:

Amphill and District Archaeological Society

Bedford Archaeological Society

Higham Ferrers Archaeological Society

Letchworth and North Hertfordshire Archaeological Society

Manshead Archaeological Society of Dunstable

North Bedfordshire Archaeological Society

South Bedfordshire Archaeological Society

And the Curators of

Bedford and Luton Museums

Copyright reserved by the Bedford Archaeological Council

BEDFORDSHIRE
ARCHAEOLOGICAL
JOURNAL

Volume IV 1969

EDITED BY
DAVID H. KENNETT

THE BEDFORDSHIRE ARCHAEOLOGICAL COUNCIL
LUTON MUSEUM, WARDOWN PARK
LUTON, BEDFORDSHIRE

CONTENTS

Iron Age Pottery in north Bedfordshire and south Northamptonshire. By D. N. Hall and N. Nickerson	1
A late Eighth century disc from Mavourne Farm, Bolnhurst, Bedfordshire. By Ann Smallridge	13
St Neots ware from Bedford: Jugs and Bowls. By David H. Kennett	17
Excavations at Elstow Abbey, 1966-68: second interim report. By David Baker	27
Timber-framed Buildings in north Bedfordshire. By N. W. Alcock	43
Milton Ernest—a Field Survey. By J. B. Hutchings	69
Notes: Bronzes in Bedford Museum. By David H. Kennett	79
Postscript on the Iron Age finds from Felmersham Bridge. By F. W. Kuhlicke	81
A Roman patera from Biggleswade. By David H. Kennett	82
Two imported Medieval vessels in Bedford Museum. By David H. Kennett	83
Bedfordshire Archaeology, 1966-69, compiled by David H. Kennett	84
Reviews: James Dyer <i>Discovering Archaeology in England and Wales</i> (David H. Kennett)	87
The <i>Viatores Roman Roads in the South-East Midlands</i> (W. H. Manning)	87
H. A. Carnell, T. Booth and H. G. Tibbutt (eds.) <i>Eight Thousand Years—A Kempston History</i> (Ann Smallridge)	87
N. Pevsner <i>The Buildings of England: Bedfordshire and the County of Huntingdon and Peterborough</i> (David H. Kennett)	88

LIST OF ILLUSTRATIONS

	<i>page</i>
IRON AGE POTTERY IN NORTH BEDFORDSHIRE AND SOUTH NORTHAMPTONSHIRE	
FIG 1. Late Iron Age A pottery from Irthlingborough	2
2. Late Iron Age A pot from Irthlingborough; Iron Age B pottery from Easton and Bozeat	3
3. Iron Age B pottery from Bozeat	4
4. Iron Age B pottery from Bozeat	6
5. Iron Age B pottery from Strixton	7
6. Iron Age B pottery from Wollaston; Belgic pottery from Harrold	10
7. Belgic pottery from Harrold	11
A LATE EIGHTH CENTURY DISC FROM MAVOURNE FARM, BOLNHURST, BEDS.	
PLATE 1a. The Mavourne Disc	
FIG 1. The Mavourne Disc	13
ST NEOTS WARE FROM BEDFORD: JUGS AND BOWLS	
FIG 1. St Neots ware jugs from Bedford and Dene Holes	18
2. St Neots ware jugs from Bedford	19
3. St Neots ware bowls from Bedford	21
4. St Neots ware bowls from Bedford	22
5. St Neots ware bowls from Bedford	23
EXCAVATIONS AT ELSTOW ABBEY, 1966-68	
PLATE I b Base of late Eighth century Saxon cross-shaft	
c pre-Abbey burials cut by Norman footing for south wall of south aisle, to south of east end of nave: stone coffin burial of Abbey period, a north cloister walk interment	
II a General view, facing southwest, of excavations at east end of Abbey church: fifteenth century extended north aisle in foreground	
b Norman footings for south nave aisle just west of crossing	
c south quire aisle eastern termination completely excavated: view from west shows relationship with presbytery at right and Norman robber trenches within	
III a View from south of southwest corner of Norman claustral ranges, with south wall cut by west wall of fourteenth century refectory with southwest corner of refectory in background	
b Northwest corner fourteenth century cloisters, showing unexcavated robber trenches for Norman footings and Saxon burial cut by both	
c Junction east ends refectories and west sides of dormitory undercrofts, seen from south	
IV a View facing east of partition wall across fourteenth century cellarium, with pier base to right, cutting earlier drain	
b View facing east along south walls of mansion (at left) and fourteenth century refectory (at right) showing narrow interspace and external Abbey buttress	
c General view of east end of church	
FIG 1. Medieval general site plan	29
2. East end of church, pre-Abbey and Abbey features	34
3. Late Saxon cemetery: diagram showing distribution of burials	38

TIMBER-FRAMED BUILDINGS IN NORTH BEDFORDSHIRE

- PLATE V a E3, Ford House, west elevation to road
 b E2, Paynes, east elevation to road
- VI E1, 115-7 Great North Road
 a East elevation to road
 b Hall roof truss
- VII E1, 115-7 Great North Road
 a Wing roof
 b First floor windows to wing
 c Ground floor fireplace in the wing
- VIII E4, Basmead Manor
 a East end
 b Spandrel N₁
 c Spandrel S₁
- IX a E7, originally a two room house of one floor with open hearth
 b T18, a two room house originally of one floor with a timber fireplace
 c E35, a Type I house, probably floored originally
 d E28, eighteenth or nineteenth century, Type I house
- X a T18, timber fireplace
 b T2, timber fireplace
 c T2, nineteenth century timber-framing
- XI a T3, nineteenth century Type I house
 b E26, gable end, seventeenth century Type I house
 c T1, large Type I house
 d T1, timber fireplace
- XII a T10, Type J house
 b E37, Type J house
 c E36, seventeenth century house of unusual plan
 d T19, nineteenth century squatter's cottage of clay

FIG 1. E3, Ford House and E2, Paynes	44
2. E1, 115-7 Great North Road and E4, Basmead Manor	45
3. Framework of a typical Bedfordshire post-medieval house, with diagram of stops to chamfered beams	47
4. Plan of Eaton Socon	48
5. Plan of Thurleigh	49
6. Houses from the Thurleigh survey with two and three main rooms	52
7. Houses from the Thurleigh Survey with four main rooms	53
8. E7, plan and sections	54
9. Two room houses: plans and sections	55
10. T1, plans and sections	56
11. Plans of three room houses and clay cottages; and outline plans	58

MILTON ERNEST—A FIELD SURVEY

FIG. 1. Milton Ernest, 1968, showing the medieval field system	70
---	----

NOTES

FIG 1. Bronzes in Bedford Museum	80
2. Shale ring from Felmersham	81
3. Iron Age Pottery from Felmersham	82
4. Roman patera from Biggleswade	83
5. Two imported pots	83