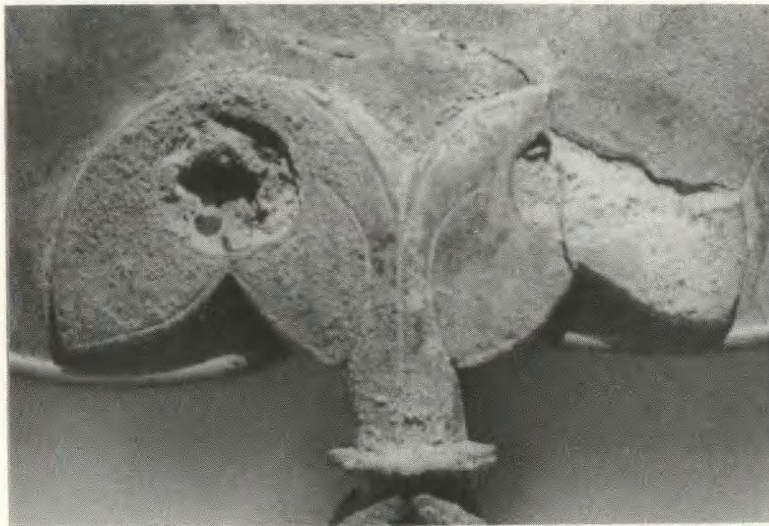
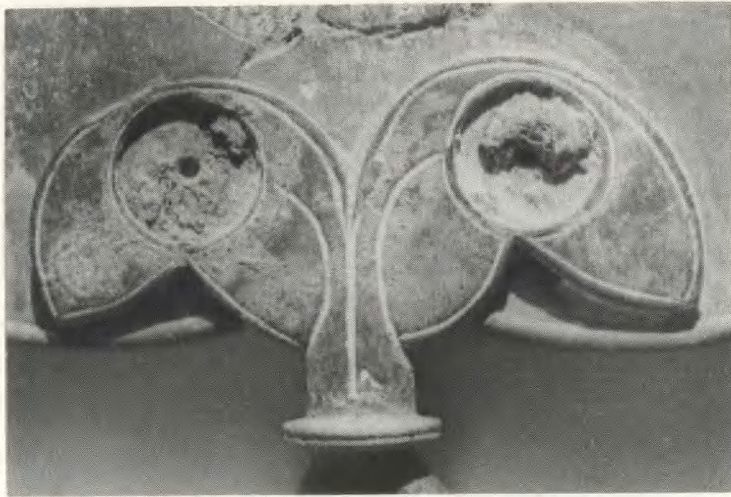
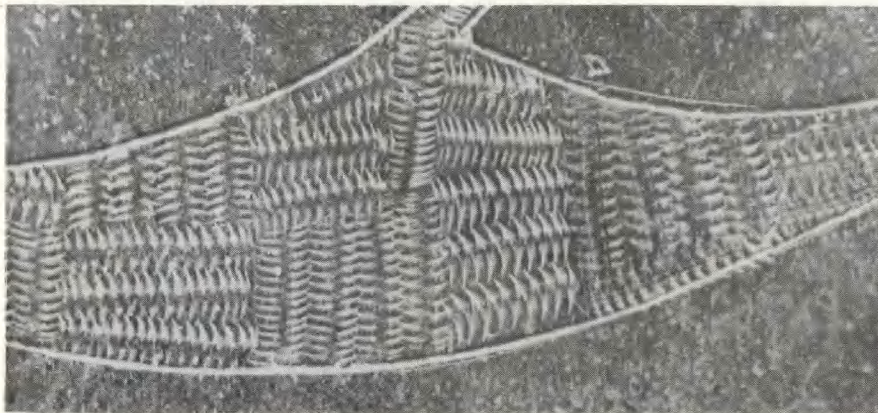
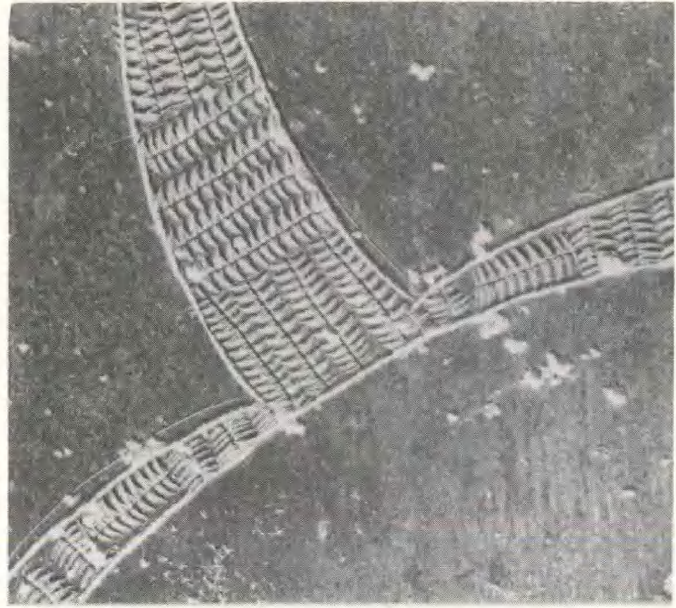
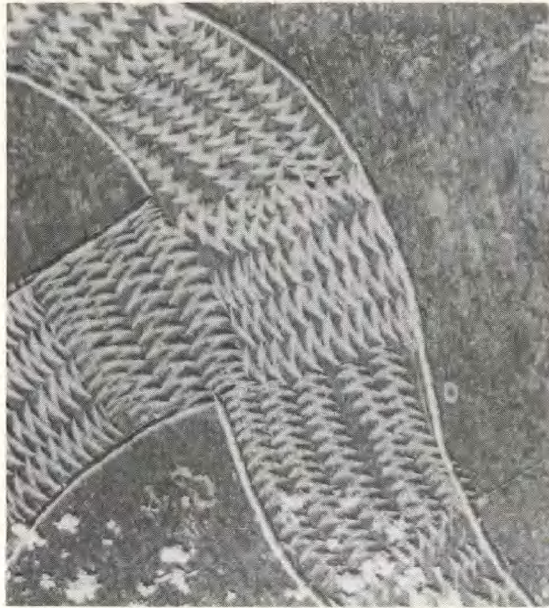


Pl. 1 Decorated bronze mirror from Old Warden, Bedfordshire.



Pl. 2 Details of the Old Warden Mirror handle.



Pl. 3 Details of zig-zag hatching on  
the Old Warden Mirror.



**a**

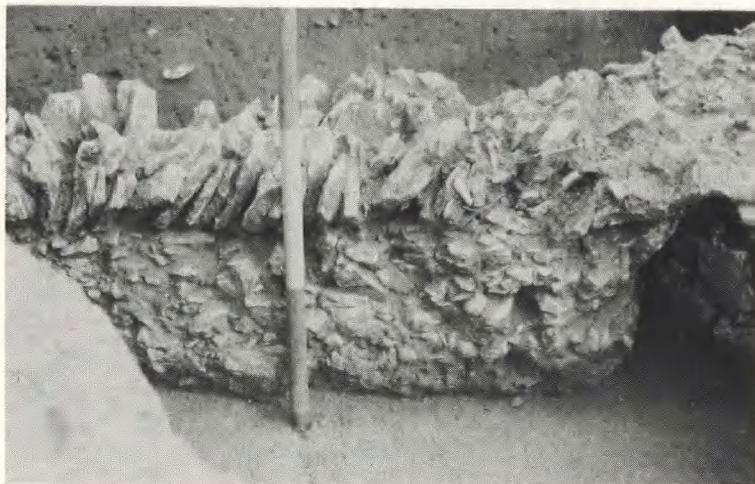


**b**

Pl 4 Iron Age burials from Harrold: a, in Ring-Ditch 13; b, in Ring-Ditch 16.



a

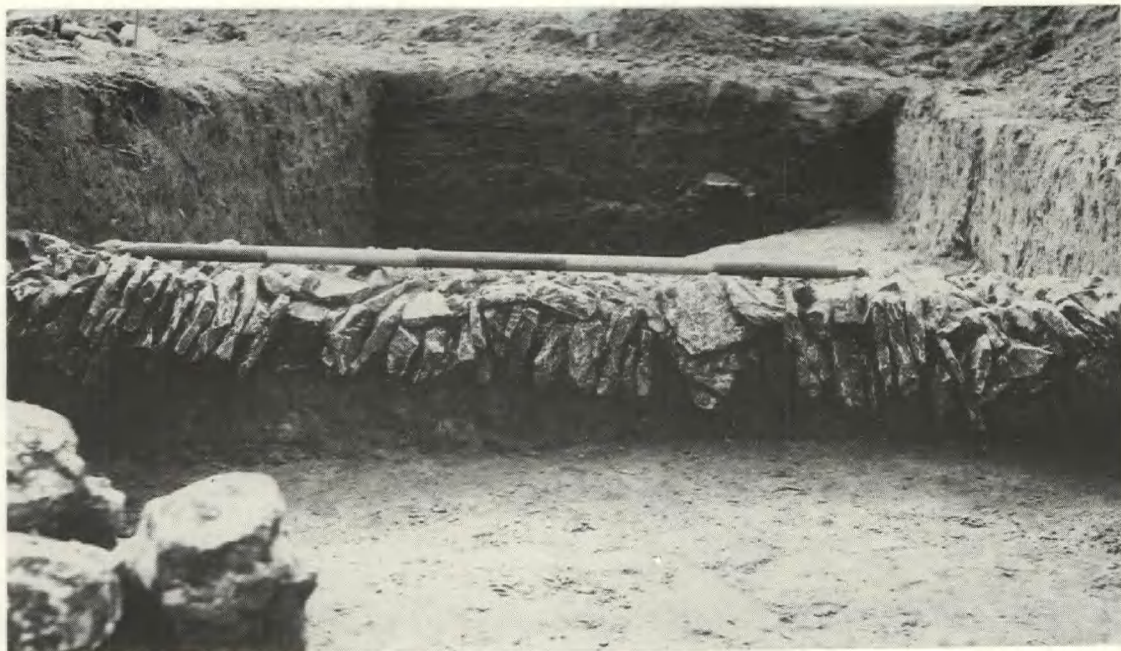


c



b

Pl. 5 Bozeat: a: Trench III looking South, showing the space between the bottom of the outer wall and the cross wall.  
b: Trench I, pier B and stone cluster.  
c: Trench III looking north showing construction of wall I.

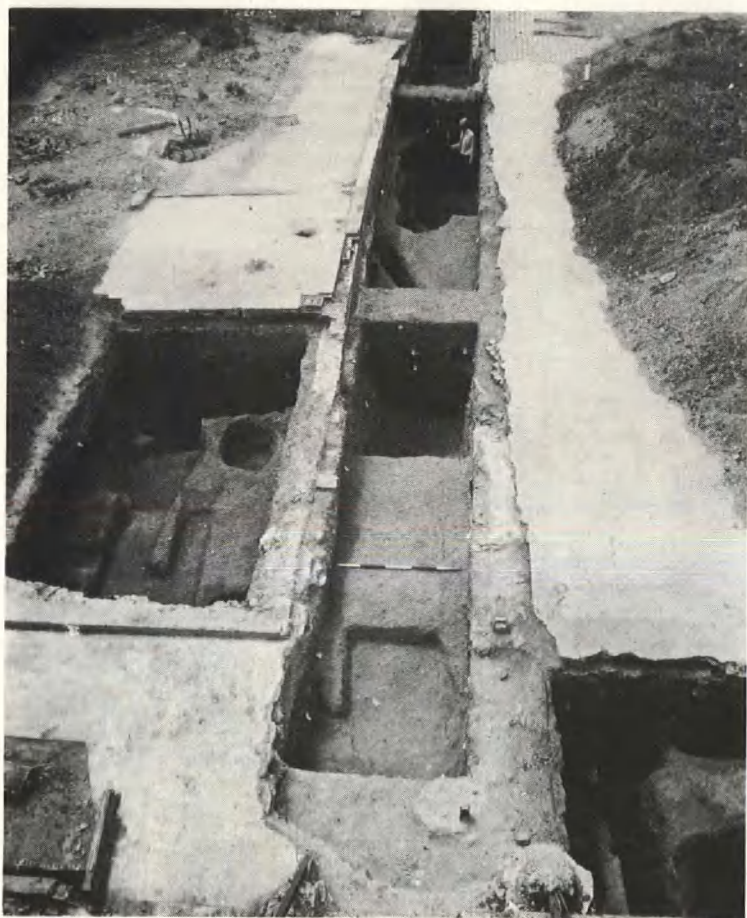


a



b

Pl. 6 Bozeat: a: Trench I looking south showing keystone in outer wall.  
b: Trench III looking north, showing several courses of stonework in the outer wall and the intersection of walls l and m



a



b



c

Pl. 7 Bedford, 1967

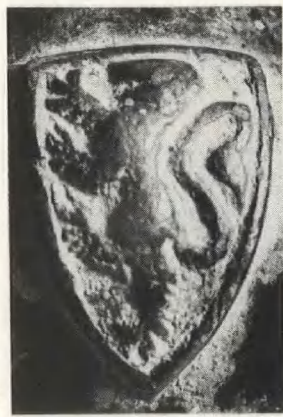
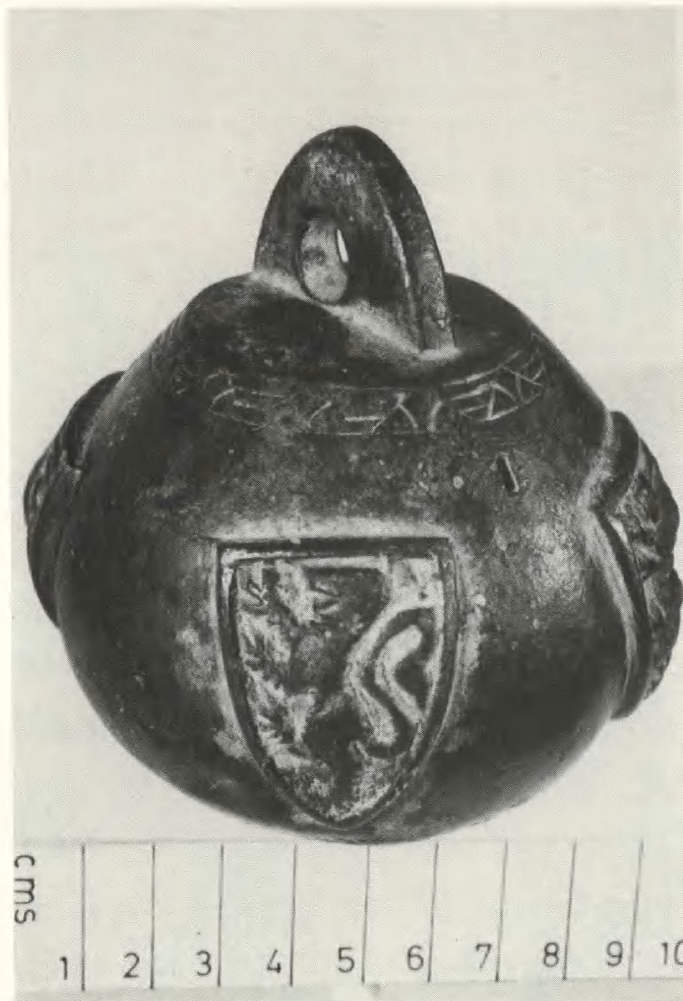
- a: General view facing west showing excavations fronting St John's Street
- b: Cauldwell Street, eighteenth century cellar, view facing west showing later modifications.
- c: St John's Street trench 4, facing west showing Pits L, R, and J.



1



2



3



4

Pl. 8 The Steelyard weight from Great Barford.

Centre, the weight.

Outer, the shields.

1. England

2. The Empire

3. The King of the Romans

4. Earldom of Cornwall.