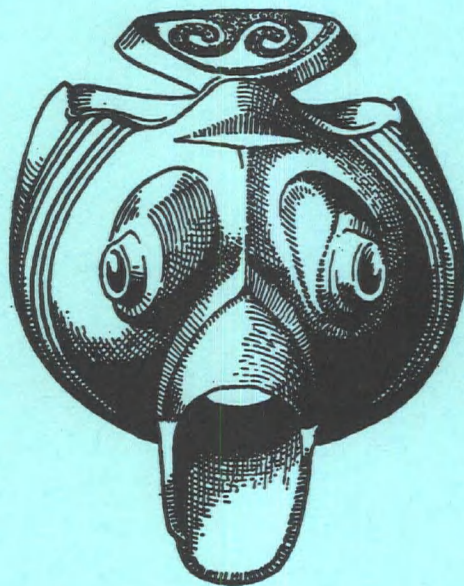


BEDFORDSHIRE
ARCHAEOLOGICAL
JOURNAL



VOLUME 7 1972

The **BEDFORDSHIRE ARCHAEOLOGICAL JOURNAL** is published by the **BEDFORDSHIRE ARCHAEOLOGICAL COUNCIL**.

Additional copies may be purchased from the Hon Treasurer at 63 Ampthill Road, Maulden, Bedford, price £2.10. Members of the constituent societies of the Bedfordshire Archaeological Council enjoy a reduced subscription of £1.75.

Contributions and matter for review should be sent to the Editor, the Bedfordshire Archaeological Journal, 55 Mount Grace Road, Stopsley, Luton, Bedfordshire. LU2 8EP.

Manuscripts should be typed on good quality paper with double spacing and a broad left-hand margin; photographs should be at least of half-plate size; and line illustrations should be of a size proportional to the page size of the journal, wherever possible. (Notes for contributors are available on request.)

Bedfordshire Archaeological Council has representatives from :

Ampthill and District Archaeological Society
Archaeological Liaison Officer, Bedfordshire County Council
Bedford Archaeological Society
Bedford College of Education
Bedford Museum
Department of Archaeology and History, Putteridge Bury College of Education
Higham Ferrers Hundred Archaeological Society
Letchworth and North Hertfordshire Archaeological Society
Luton Museum
Manshead Archaeological Society of Dunstable
North Bedfordshire Archaeological Society
South Bedfordshire Archaeological Society

Bedfordshire Archaeological Council

Officers :

Chairman : R. Fowler
Secretary : Miss E.G. Cole
Assistant Secretary : J.M. Bailey
Treasurer : B.D. Lazelle
Editor : David H. Kennett, James Dyer

Material in the Bedfordshire Archaeological Journal is copyright. The views expressed by the individual contributors are their own and do not necessarily reflect those of the Bedfordshire Archaeological Council.

BEDFORDSHIRE
ARCHAEOLOGICAL
JOURNAL

Volume 7 1972

THE BEDFORDSHIRE ARCHAEOLOGICAL COUNCIL
LUTON MUSEUM, WARDOWN PARK
LUTON, BEDFORDSHIRE

CONTENTS

The distribution of archaeological sites between the Nene and Ouse valleys by D.N. Hall and J.B. Hutchings	1
An Early Iron Age site at Irthlingborough, Northamptonshire by D.N. Hall	17
A Roman Well at Dunstable by C.L. Matthews and J.B. Hutchings	21
A Roman Ditch in Dunstable Priory Meadow by Richard Hagen	35
An Urn from Moggerhanger and Panel Style at Kempston by David H. Kennett	39
Seventh Century Finds from Astwick by David H. Kennett	45
Modern Surveys of Medieval Field Systems by D. N. Hall	53
Medieval Jugs from Bedford by Susan Linger and David H. Kennett	67
A Demolished Timber-Framed Building at Luton by Terrence Paul Smith	73
Notes: Further Flint Finds from Ruxox Farm, Maulden by Kevan Fadden	79
A pre-Roman and early Romano-British settlement near Bedford by G. J. Dring	81
An early Romano skillet in Bedford Museum by David H. Kennett	82
An Anglo-Saxon grave cover at Cardington Church by M. J. Hare	83
A Twelfth Century carved head from St Mary's Church, Bedford by F. W. Kuhlicke	85
A Medieval cooking pot type at Bedford by David H. Kennett	86
A palimpsest brass at Cople by F. W. Kuhlicke	87
Bedfordshire Archaeology, 1971-1972 compiled by David H. Kennett	89
Reviews: R. Hollowell, <i>Aerial Photography and fieldwork in the Upper Nene valley</i>	98
Department of the Environment, <i>List of Buildings of Special Architectural or Historic Interest: Borough of Bedford, Bedfordshire</i>	98

LIST OF ILLUSTRATIONS

The Distribution of Archaeological Sites between the Nene and Ouse Valleys

Fig 1	Location of Area	2
2	Archaeological Sites in the Nene valley	4
3	Archaeological Sites between the Ouse and Nene valleys	5
4	Archaeological Sites in the central Nene valley	7

An Early Iron Age site at Irthlingborough

Fig 1	Irthlingborough, location and site plan	18
2	The finds	19
3	Romano-British Corndryer	19

A Roman Well at Dunstable

Fig 1	The location and section of the well	22
2	Pottery from the well	24
3	Pottery from the well	26
4	Iron, bronze and lead objects from the well	28
5	Bronze, silver and organic finds	30
6	Bucket fragments	32
7	Bronze eyelets and lead weight	33

A Roman Ditch in Dunstable Priory Meadow

Fig 1	Roman Dunstable	35
2	Location of cable and plan of ditch	36
3	Plan and section in cable trench	37
4	Pottery from Roman ditch at Dunstable	38

An Urn from Moggerhanger and Panel Style at Kempston

Fig 1	Anglo-Saxon urn from Moggerhanger	39
2	Urns with triangular panel style from Kempston	40
3	Urns from Dunstable, Kingsey and Brixworth	42

Seventh Century Finds from Astwick

Fig 1	Sword from Astwick	46
2	Metalwork from Astwick	48
3	Spearheads perhaps from Astwick	49
4	Pot from Clifton	50

Modern Surveys of Medieval Field Systems

Plate 1a	Part of furlongs 5 and 9 looking south, at Wollaston, Northants.	
1b	Part of two furlongs showing a headland. Castle Ashby Park, Northants.	
2a	Part of furlongs 5 and 9 showing a head, Wollaston, Northants.	
2b	The ploughed over boundary between furlongs 9 and 10, readily visible in the young corn. Strixton, Northants.	
3	The 1583 open field map of Strixton, Northants, showing the furlong pattern.	
4	Part of the 1583 open field map of Strixton, Northants.	
Fig 1	Scheme for ploughing a land	54
2	Schematic sections of a land after ploughings with section of a land in Strixton furlong 25	55
3	Strixton furlong plan	57
4	Wollaston furlong plan	59
5	Details of part of two furlongs	60
6	Relation of village size to the arable in 1300	61

Medieval Jugs from Bedford

Fig 1	Local wares and Lyveden jugs	68
2	Elstree jug and skillet from Horne Lane	69
3	Elstree jugs and sandy ware jugs	70
4	Jugs of white wares	71

A Demolished Timber-Framed Building at Luton

Plate 5	Demolished timber-framed building formerly in Upper George Street, Luton.	
Fig 1	Conjectural plan of building	74
2	Isometric reconstruction of building	76

Notes

Plate 6	Face and side views of twelfth century carved head from St Mary's Church, Bedford.	
7a	Palimpsest brass from Cople.	
7b	Central portion of the Seprans brass.	
Fig 1	Mousterian hand axe and Mesolithic flints from Ruxox Farm, Maulden ..	79
2	Flints from Ruxox Farm, Maulden	80
3	Bronze skillet in Bedford Museum	82
4	Anglo-Saxon grave cover in Cardington Church	84
5	Cooking pots from Bedford	86

Bedfordshire Archaeology, 1971-1972

Plate 8	Sherd of Nene valley pottery from Ruxox Farm, Maulden.	
Fig 1	Neolithic axe from Houghton Regis	92
2	Spearhead from Oakley, Stafford Bridge	94
3	Flint axe from Steppingley	95
4	Neolithic axe from Wollaston	97

Notes on Contributors

G.J. DRING MIBiol is a microbiologist and a member of the Colworth House Natural History Society (Archaeological Section) and the chairman of the Higham Ferrers Hundred Archaeological Society.

KEVAN FADDEN is chairman and site director of the Ampthill and District Archaeological and Local History Society and has been excavating the Roman site at Ruxox Farm, Maulden, for a number of years.

R.K. HAGEN is Archaeological Assistant, Luton Museum.

D.N. HALL MA is a chemist and the secretary of the Higham Ferrers Hundred Archaeological Society. He has been active in fieldwork in south Northamptonshire and north Bedfordshire for several years and has contributed papers on this and his excavations to the *Bedfordshire Archaeological Journal*.

MICHAEL HARE MA has previously contributed to the *Bedfordshire Archaeological Journal* a study of Anglo-Saxon churches which are his major interest.

J.B. HUTCHINGS is a physicist and a member of the Higham Ferrers Hundred Archaeological Society.

DAVID H. KENNETT is an archaeologist and historian whose interests include the archaeology of the Volkerwanderungszeit.

F.W. KUHLCHE BA FSA AMA is Director of the Bedford Museum and Hon Curator of the collections of the Pritchard Museum of Bedford Modern School.

SUSAN LINGER is an undergraduate of Newnham College, Cambridge, and sometime assistant to the Archaeological Liaison Officer, Bedfordshire County Council.

C.L. MATTHEWS has been site director for the Manshead Archaeological Society of Dunstable since 1950 and has excavated a large number of sites of all periods in the Dunstable area.

T.P. SMITH MA sometime Traherne Scholar of St David's College, Lampeter, and now engaged on research in the Faculty of Divinity, University of Cambridge, is Academic Secretary to the Brick Group and has published previous papers on building history, industrial archaeology and philosophical theology.