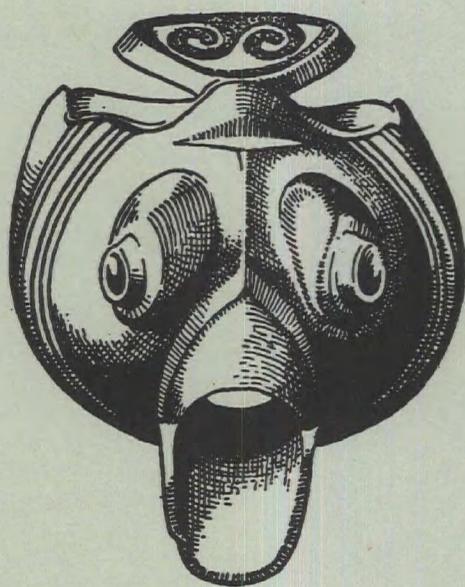


BEDFORDSHIRE
ARCHAEOLOGICAL
JOURNAL



VOLUME 8

1973

The **BEDFORDSHIRE ARCHAEOLOGICAL JOURNAL** is published by the **BEDFORDSHIRE ARCHAEOLOGICAL COUNCIL**.

Additional copies may be purchased from the Hon Treasurer at 63 Ampthill Road, Maulden, Bedford, price £2.10. Members of the constituent societies of the Bedfordshire Archaeological Council enjoy a reduced subscription of £1.75.

Contributions and matter for review should be sent to the Editor, the Bedfordshire Archaeological Journal, 55 Mount Grace Road, Stopsley, Luton, Bedfordshire. LU2 8EP.

Manuscripts should be typed on good quality paper with double spacing and a broad left-hand margin; photographs should be at least of half-plate size; and line illustrations should be of a size proportional to the page size of the journal, wherever possible. (Notes for contributors are available on request.)

Bedfordshire Archaeological Council has representatives from :

Ampthill and District Archaeological Society
Archaeological Liaison Officer, Bedfordshire County Council
Bedford Archaeological Society
Bedford College of Education
Bedford Museum
Department of Archaeology and History, Putteridge Bury College of Education
Higham Ferrers Hundred Archaeological Society
Letchworth and North Hertfordshire Archaeological Society
Luton Museum
Manshead Archaeological Society of Dunstable
North Bedfordshire Archaeological Society
South Bedfordshire Archaeological Society

Bedfordshire Archaeological Council

Officers :

Chairman : R. Fowler
Secretary : Miss E.G. Cole
Assistant Secretary : J.M. Bailey
Treasurer : B.D. Lazelle
Editor : David H. Kennett,

Material in the Bedfordshire Archaeological Journal is copyright. The views expressed by the individual contributors are their own and do not necessarily reflect those of the Bedfordshire Archaeological Council.

BEDFORDSHIRE
ARCHAEOLOGICAL
JOURNAL

Volume 8 1973

THE BEDFORDSHIRE ARCHAEOLOGICAL COUNCIL
LUTON MUSEUM, WARDOWN PARK
LUTON, BEDFORDSHIRE

CONTENTS

Three Bronze Age Spearheads in Luton Museum by Richard Hagen	1
The Iron Age in the Bedford Region by Angela Simco	5
A Belgic and Romano-British site at Bromham by Peter Tilson	23
Rescue Excavations at Radwell Gravel Pits by D.N. Hall	67
Some Anglo-Saxon Pottery from Luton by David H. Kennett	93
Seventh Century Cemeteries in the Ouse Valley by David H. Kennett	99
A Thirteenth Century Windmill Site at Strixton, Northamptonshire by D.N. Hall	109
Two Late Medieval Bronze Belt Chapes by Richard Hagen	119
The Chantry House, Tempsford by Terence Paul Smith	123
A Timber-Framed Building in Cumberland Street, Luton by Terence Paul Smith	127
Notes: Mesolithic Flints from Beadlow Manor Farm, Clophill by Kevan Fadden	131
A Middle Bronze Age Palstave from Dunton by Jane Hassall	131
A Stater of the Coritani by F.W. Kuhlicke	132
An Anglo-Saxon Grave from Biscot by David H. Kennett	133
The Tympana of Covington and Thurleigh by Richard Marks	134
Biggleswade Windmill by Terence Paul Smith	136
Bedfordshire Archaeology, 1972-1973, compiled by David H. Kennett	138
Reviews: J. Dyer, <i>Southern England: an archaeological guide</i>	144
P.J. Fowler (ed.), <i>Archaeology and the Landscape</i>	144
D.W. Harding, <i>The Iron Age in the Upper Thames Basin</i>	145
H. Forrester, <i>Medieval Gothic Mouldings</i>	146
J.A. Wight, <i>Brick Building in England from the Middle Ages to 1550</i>	146

LIST OF ILLUSTRATIONS

Three Bronze Age Spearheads in Luton Museum

Fig 1	The distribution of Bronze Age spearheads in Bedfordshire ..	1
2	Spearheads from Sundon and Farley Hill, Luton	2
3	Spearhead from Great Barford	3
4	Lost spearheads from Toddington	4

The Iron Age in the Bedford Region

Fig 1	The distribution of Iron Age material in the Bedford Region ..	7
2	Iron Age sites in eastern England	7
3	Finds from Foulke's Pit, Kempston	8
4	Pottery from Oakley and Kempston	9
5	Belgic Pottery from Kempston	13
6	Belgic Pottery from Kempston, Biddenham, Felmersham and Kempston Hardwick	15
7	Belgic Pottery from Bedford and Sandy	17
8	Pottery from Green Lane, Clapham	19

A Belgic and Romano-British site at Bromham

Plate 1a	Section of Ditch D	
1b	Granary Floor with indentations of sleeper beams	
1c	Inhumation burial in base of Ditch H	
2a	Piece of clay with impressions of barley	
2b	'T'-shaped corn-drying oven of the mid-second century	
Fig 1	1 Site Plan of excavations at Bromham	24
	2 The Corn drying oven and related ditches	25
	3 Ditches and gully complex at east end	26
	4 Ditches and gully complex at west end	27
	5 Ditch sections	28
	6 Plan of corn drying oven	30
	7 Section through corn drying oven	31
	8 Pottery from Ditch D	33
	9 Pottery from Ditch E	34
	10 Pottery from Ditch E	36
	11 Pottery from Ditch F	37
	12 Pottery from Ditch A	38
	13 Pottery from Ditch C	39
	14 Pottery from Ditch C	40
	15 Pottery from occupation layers over clay floors	41
	16 Pottery from occupation layers over cobbled floors	42
	17 Pottery from trench 4	43
	18 Pottery from disturbance	44
	19 Pottery from occupation layer over Ditch H	45
	20 Pottery associated with burning, Ditch H	46
	21 Pottery from occupation layer over Ditch H	48
	22 Pottery from Ditch H	49
	23 Pottery from Ditch H	50
	24 Pottery from Ditch H	51
	25 Pottery from pit in gully in trench 15	52
	26 Pottery from Ditch A and trenches 19, 20, and 26	55
	27 Pottery from late third century pit	57

Fig 28	Brooches	58
29	Brooches, bone and iron small finds	59
30	Bone finds, samian stamps, spindle whorls	60
31	Quern stones	61
32	Mortarium stamp and flints	62
33	Flints	63

Rescue Excavations at Radwell Gravel Pits

Plate 3	Aerial view of site before gravel digging	
4a	Belgic skeleton, S1	
4b	Belgic skeleton, S2	
4c	Belgic skeleton, S4, badly corroded by acid soil	
Fig 1	Radwell gravel Pits: location plan	68
2	Plan of Area A at Radwell Gravel Pits	70
3	Small Finds from Radwell Gravel Pits	72
4	Bronze Age and Iron Age pottery from Radwell	73
5	Late Roman Pottery	79
6	Late Roman Pottery	80
7	Late Roman Pottery	85
8	Late Roman Pottery	86
9	Late Roman Pottery and Tile	90

Some Anglo-Saxon Pottery from Luton

Fig 1	Anglo-Saxon Pottery from Luton	94
-------	----------------------------------------	----

Seventh Century Cemeteries in the Ouse Valley

Fig 1	The Cemeteries of the Ouse Valley with seventh century material	105
-------	-------------------------------------------------------------------------	-----

A Thirteenth Century Windmill Site at Strixton, Northamptonshire

Plate 5a	Early Post hole	
5b	Cobbled yard and un excavated post hole	
5c	Cobbled yard and excavated post hole	
Fig 1	Location plan of windmill site at Strixton	110
2	Excavation plans	111
3	Sections of windmill site at Strixton	112
4	Small finds	115
5	Pottery from Strixton Windmill	116
6	Pottery from Strixton Windmill	117

Two Late Medieval Bronze Belt Chapes

Fig 1	Belt chapes from Great Barford and Bedford	119
2	Belt chapes on male brasses from Bedfordshire	120
3	Belt chapes on female brasses from Bedfordshire	121

The Chantry House, Tempsford

Fig 1	Perspective of the Chantry House, Tempsford	125
-------	-----------------------------------------------------	-----

A Timber-Framed Building in Cumberland Street, Luton

Fig 1	Plan and elevation	127
2	Joint of corner-post, wall-plate and tie-beam	128
3	Scarf in wall-plate	129

Notes

Plate 6a	The Tympanum at Covington, Huntingdonshire				
6b	Detail of border of the Bayeux Tapestry				
6c	The Tympanum at Thurleigh				
6d	Detail of British Museum, MS Cotton, Tiberius C.vi				
7a	Gold Stater of the Coritani from Dunton				
7b	Biggleswade Windmill: general view with sails				
7c	Biggleswade Windmill: general view showing gallery				
8a	Brake wheel with brake at Biggleswade Windmill				
8b	View into top of cap of Biggleswade Windmill				
Fig 1	Mesolithic Flints from Beadlow Manor, Clophill	131
2	Middle Bronze Age Palstave from Dunton	132
3	Anglo-Saxon finds from Biscot	133

Bedfordshire Archaeology, 1972-1973

Fig 1	Ungentarium from Sandy and polished flint from Wrestlingworth	142
-------	---------------------------------------------------------------	----	----	----	----	----	----	-----

Notes on Contributors

KEVAN FADDEN is chairman and site director of the Ampthill and District Archaeological and Local History Society. He has been excavating the Roman site at Ruxox Farm, Maulden, for a number of years.

R.K. HAGEN is the Archaeological Assistant, Luton Museum, and has contributed previous papers to the *Bedfordshire Archaeological Journal*

D.N. HALL MA is a chemist and the secretary of the Higham Ferrers Hundred Archaeological Society. He has been active in fieldwork in south Northamptonshire and north Bedfordshire for several years and has contributed papers on this and his excavations to the *Bedfordshire Archaeological Journal*

JANE HASSALL BA is the Archaeological Assistant, Bedford Museum. She has been active in excavations in Bedford for a number of years.

DAVID H. KENNETT is an historian and archaeologist whose especial interests include the archaeology of the cemeteries of the Volkerwanderungszeit.

F. W. KUHLCHE BA FSA AMA Director of the Bedford Museum and Hon Curator of the collections of the Pritchard Museum of Bedford Modern School.

RICHARD MARKS MA is an Assistant Keeper in the Department of Medieval and Later Antiquities, the British Museum, and a member of the council of the Bedfordshire Historical Record Society. He has recently completed a study of the west door of the Priory Church, Dunstable.

ANGELA SIMCO BA is Field Archaeologist, Bedfordshire County Council. She is currently engaged on excavations of the large Romano-British complex at Newnham Marina, Bedford.

T.P. SMITH MA sometime Traherne Scholar of St. David's College, Lampeter, is now engaged on research in the Faculty of Divinity, University of Cambridge (St. John's College). He has published papers in building history and in philosophy.

P.G. TILSON is a member of the Bedford Archaeological Society. He has acted as the site director for a number of their excavations.