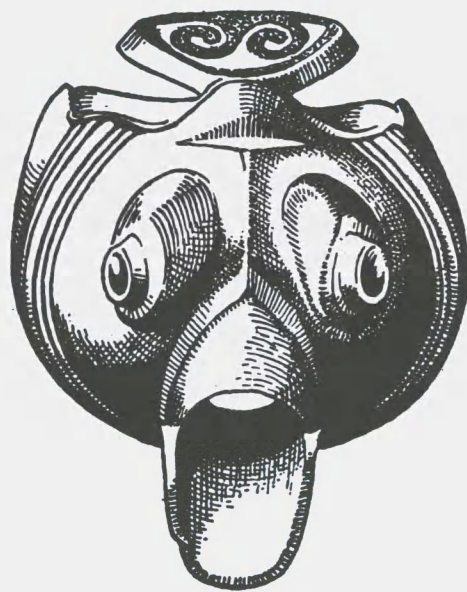


BEDFORDSHIRE  
ARCHAEOLOGICAL  
JOURNAL



VOLUME 9      1974

The **BEDFORDSHIRE ARCHAEOLOGICAL JOURNAL** is published by the **BEDFORDSHIRE ARCHAEOLOGICAL COUNCIL**.

Additional copies may be purchased from the Hon. Treasurer at 63 Amptill Road, Maulden Bedford, price £2.80, plus postage. The price to regular subscribers is £2.10, plus postage, and members of the constituent societies of the Bedfordshire Archaeological Council enjoy a reduced subscription of £1.75, plus postage where appropriate.

Contributions and matter for review should be sent to the Editor, the Bedfordshire Archaeological Journal, 55 Mount Grace Road, Stopsley, Luton, Bedfordshire, LU2 8EP.

Manuscripts should be typed on good quality paper with double spacing and a broad left-hand margin; photographs should be of at least half-plate size; and line illustrations should be of a size proportional to the page size of the journal, wheresoever possible; and must be fully lettered at a size suitable for the intended reduction. (Notes for contributors are available on request).

The *Bedfordshire Archaeological Council*:

<i>Chairman</i>	:	R. Fowler
<i>Secretary</i>	:	Miss E.G. Cole
<i>Assistant Secretary</i>	:	J.M. Bailey
<i>Treasurer</i>	:	B.D. Lazelle
<i>Editor</i>	:	David H. Kennett

together with representatives of the archaeological societies and museums of the county:

Amptill and District Archaeological and Local History Society:

K.J. Fadden, B.D. Lazelle, Miss J.M. Sewell

Bedford Archaeological Society:

A.W. Guppy, H.S. Hoole, P.G. Tilson.

Bedford College of Education:

R.M. Smart.

Bedford Museum:

Miss J.M. Hassall, F.W. Kuhlicke, H.J. Turner.

Conservation Unit, Planning Department, Bedfordshire County Council:

D.B. Baker.

Higham Ferrers Hundred Archaeological Society:

D.N. Hall, J.B. Hutchings.

Luton Museum:

F. Hackett, R.K. Hagen.

Manshead Archaeological Society of Dunstable:

R. Fowler, C.L. Matthews, Mrs. J.M. Schnieder.

North Bedfordshire Archaeological Society:

Miss E.G. Cole, J. Moor, S. Moor.

Putteridge Bury College of Education:

J. Dyer, W.A. Gates

South Bedfordshire Archaeological Society:

D.H. Kennett, T.P. Smith

Material in the *Bedfordshire Archaeological Journal* is copyright. The views expressed by individual contributors are their own and do not necessarily reflect those of the Bedfordshire Archaeological Council.

# BEDFORDSHIRE ARCHAEOLOGY

ESSAYS PRESENTED TO  
FREDERICK WILLIAM  
KÜHLICKE, B.A., F.S.A., A.M.A.

being

BEDFORDSHIRE ARCHAEOLOGICAL JOURNAL

Volume 9 1974

*Bedfordshire Archaeology: Essays Presented to Frederick William Kuhlicke*  
being *Bedfordshire Archaeological Journal*, 9, 1974  
is a special issue of the *Bedfordshire Archaeological Journal*  
to pay tribute to the work of Frederick William Kuhlicke as  
Curator of the Pritchard Museum of Bedford Modern School, 1933 to 1959,  
and Director of Bedford Museum and Honorary Curator of the Collections  
of the Pritchard Museum of Bedford Modern School, 1959-1974,  
on the occasion of his retirement, 31 January 1974.  
An especially bound copy of the volume was presented to  
Frederick William Kuhlicke B.A., F.S.A., A.M.A.  
at the Bedfordshire Archaeological Conference  
15 November 1975

*Bedfordshire Archaeology: Essays Presented to Frederick William Kuhlicke*  
being *Bedfordshire Archaeological Journal*, 9, 1974  
was edited and designed by David H. Kennett with additional proof-reading  
by Jane Hassall and John Hutchings.  
Cover by Terence Paul Smith.

BEDFORDSHIRE  
ARCHAEOLOGICAL  
JOURNAL

Volume 9 1974

THE BEDFORDSHIRE ARCHAEOLOGICAL COUNCIL

LUTON MUSEUM, WARDOWN PARK

LUTON, BEDFORDSHIRE

## Notes on Contributors

DAVID BAKER MA FSA is Conservation Officer, Planning Department, Bedfordshire County Council. His excavations include the major programmes at Elstow Abbey from 1965 to 1972 and at Bedford Castle from 1969 to 1972. He has also conducted excavations on a number of sites within the town of Bedford. He has contributed papers on the first and last to previous issues of the *Bedfordshire Archaeological Journal* and on the second to *Chateau Galliard VI*.

H.K. CAMERON MA BSc PhD FRIC FSA is President of the Monumental Brass Society and its Honorary Technical Advisor. A retired Lecturer in Engineering of the University of Cambridge, he has recently been awarded a Leverhulme Fellowship for work on the metallurgical composition of monumental brasses.

A. COLIN COLE TD MA BCL FSA is the Windsor Herald, the College of Arms.

G.C. DUNNING BSc DLit FSA is sometime Inspector of Ancient Monuments of the then Ministry of Works and author of many papers on various aspects of medieval pottery, particularly the different types of roof-fittings. A former pupil of Bedford Modern School, he for long publicised the archaeology of Bedfordshire, through his work on the collections of the Pritchard Museum of Bedford Modern School.

JAMES DYER MA FSA is Principal Lecturer in Archaeology, Putteridge Bury College of Education, Luton. His recent books include *Southern England: an archaeological guide* and a revised edition of *The Story of Luton*. He has recently edited the manuscript account of a life of William Cunnington of Heytesbury, *From Antiquary to Archaeologist*, and he is the Meetings Secretary of the Pre-historic Society.

ELIZABETH S. EAMES MA MLitt FSA is an Assistant Keeper in the Department of Medieval and Later Antiquities, the British Museum, London, and author of many reports on medieval tiles.

R.K. HAGEN is the Archaeological Assistant, Luton Museum. He has contributed a number of papers to previous issues of the *Bedfordshire Archaeological Journal*.

JANE HASSALL BA is the Archaeological Assistant, Bedford Museum. She has been active in the excavations in Bedford town since 1970 and her recent excavations include those at the earthwork known as 'Willington Docks' and at the Harpur Centre, Bedford, as well as work on the lime kiln within the curtain wall of Bedford Castle. She has previously contributed papers to the *Bedfordshire Archaeological Journal*, the *Archaeological Journal* and the *Proceedings of the Hampshire Field Club*.

DAVID JOHNSTON MA FSA is Tutor in Archaeology, Department of Extra-Mural Studies, University of Southampton. He has done extensive work on the Romano-British occupation of Bedfordshire and Northamptonshire. He recently contributed a study of the pottery kilns of Northampton and its environs to the *Antiquaries Journal*.

DAVID H. KENNETT is an historian and archaeologist whose especial interests include the archaeology of the cemeteries of the Volkerwanderungszeit. He is the editor of the *Bedfordshire Archaeological Journal*.

CATHERINE REW BA AMA was Museum Education Officer, Bedford Museum, from 1971 to 1974 and was formerly on the staff of the Education Department of Liverpool Museums. She has subsequently taken part in a geographical expedition to the continent of South America and is now Assistant Curator with special responsibility for Education, Grosvenor Museum, Chester.

TERENCE PAUL SMITH BA MA is sometime Traherne Scholar of St David's College, Lampeter, and a member of St John's College, University of Cambridge. He has been engaged on research in the Faculty of Divinity of that university. He has published papers in philosophy and in building history. The latter include studies of both ecclesiastical and secular buildings.

## CONTENTS

Frederick William Kuhlicke, B.A., F.S.A., A.M.A.: an appreciation .. ..	1
Frederick William Kuhlicke: a select bibliography .. .. .	4
Archaeology, Schools and Bedford Museum By Catherine Rew .. .. .	9
The Excavation of Two Barrows at Galley Hill, Streatley By James Dyer .. .. .	13
The Roman Settlement at Sandy, Bedfordshire By David E. Johnston .. .. .	35
Some Decorative Aspects of the Anglo-Saxon Shield By David H. Kennett .. .. .	55
Some Anglo-Saxon Pennies from Bedford Mint now in Luton Museum By Richard Hagen .. .. .	71
Bedford: Aspects of Town Origins and Development By Jane Hassall and David Baker .. .. .	75
The Earliest Work in the Church of St Mary, Bedford By Terence Paul Smith .. .. .	95
Excavations in the Area of Mill Street, Bedford, 1971 By David Baker, with G.C. Dunning and Elizabeth S. Eames .. ..	99
A Palimpsest Brass at Dunstable By H.K. Cameron .. .. .	129
Frederick William Kuhlicke and Heraldry: a tribute By A. Colin Cole .. .. .	135

## LIST OF ILLUSTRATIONS

### *The Excavation of Two Barrows at Galley Hill, Streatley*

Plate 1	The mutilated burials from barrow 3	
1b	Grave group from barrow 3	
2a	Horse skull deposit in barrow 3	
2b	Total excavation of barrow 4	
Fig 1	The location of Galley Hill .. .. .	14
2	Site plan of excavation on barrow 3 .. .. .	16
3	Sections of Galley Hill barrows 3 and 4 .. .. .	18
4	Small finds from Galley Hill barrow 3 .. .. .	20
5	Site plan of excavation of Galley Hill barrow 4 .. .. .	21
6	Pottery from Galley Hill barrow 4 .. .. .	22
7	Dental attrition patterns of skeletons from Galley Hill barrow 3 .. .. .	24
8	Pathology of skeletons from Galley Hill barrow 3 .. .. .	25
9	Skeletons from Galley Hill barrow 3 .. .. .	26
10	Skeletons from Galley Hill barrow 3 .. .. .	27
11	The mutilated burials from Galley Hill barrow 3 .. .. .	29

### *The Roman Settlement at Sandy, Bedfordshire*

Plate 3a	Bronze Phalera of Medusa	
3b	Roman Lamp from Sandy	
3c	Sherd of Face Urn	
Fig 1	The Topography and Roman Settlement at Sandy .. .. .	36
2	The Bungalow: sections .. .. .	37
3	The Cemetery and Chesterfield .. .. .	38
4	Tower Hill: quarrying and conjectural find-spots .. .. .	40
5	Bronze handle with Medusa .. .. .	42
6	Bronze brooches .. .. .	43
7	Bronze objects .. .. .	44
8	Bronze bracelet .. .. .	45
9	Iron objects .. .. .	45
10	Glass .. .. .	46
11	The oculist's stamp .. .. .	46
12	Ironstone last .. .. .	47
13	Flower vase and graffiti on pottery .. .. .	49
14	Pottery .. .. .	50
15	The economic basis .. .. .	51

### *Some Decorative Aspects of the Anglo-Saxon Shield*

Fig 1	The shield fittings of Kempston grave 52 .. .. .	56
2	Reconstruction of the shield from Kempston grave 52 .. .. .	57
3	Shield-boss and shield binding from Kempston grave 38 .. .. .	59
4	Objects from Kempston grave 136 .. .. .	60
5	Zoomorphic shield appliques .. .. .	61
6	Shield-boss and shield fittings from Aylesbury .. .. .	63
7	Shield fittings and grip from Lakenheath .. .. .	64
8	Shield-boss and bronze pouch-mount from Kempston grave 151 .. .. .	65



*Some Anglo-Saxon Pennies from Bedford Mint in Luton Museum*

Plate 4 Anglo-Saxon Pennies in Luton Museum

*Bedford: Aspects of Town Origins and Development*

Plate 5	Aerial view of Bedford		
6a	Excavated section across the Kingsditch at Rays Close		
6b	Ovens and hearths at 5-11 St Mary's Street		
7a	St Cuthbert's Church		
7b	The Chapel of Herne		
8a	Bedford Bridge		
8b	The Old Swan Inn		
9a	St John's Street		
9b	Cauldwell Street		
10a	Cardington Road Terrace		
10b	'Hiawatha'		
Fig 1	The Archaeological Evidence for Settlement in the Bedford Area	.. .. .	facing 80
2	Excavated section across the Kingsditch	.. .. .	facing 80
3	Observed section across bank outside the Kingsditch	.. .. .	facing 80
4	Pottery from the Kingsditch excavation in Ray's Close	.. .. .	80
5	Bedford Castle	.. .. .	facing 80
6	Bedford: Historic Sites and Buildings	.. .. .	facing 81
7	Bedford: the expansion of the urban area, 1610-1903	.. .. .	facing 81
8	Bedford: buildings of 1841 surviving in 1974	.. .. .	facing 81
9	Bedford: excavation and development	.. .. .	89

*The Earliest Work in the Church of St Mary, Bedford*

Fig 1	Plan of the church of St Mary, Bedford	.. .. .	96
2	Location of churches with Anglo-Saxon features in the Ouse Valley	.. .. .	97

*Excavations in the Area of Mill Street, Bedford, 1971*

Plate 11a	43 Mill Street: walls of building 1		
11b	43 Mill Street: hearth with reused floor tiles		
11c	43 Mill Street: detail of hearth with reused floor tiles		
11d	Litson's Timber Yard: Trench 22, foundations		
12	Knight Finial from 43 Mill Street, Bedford		
13a	Finial of Musician from Sainte-Marie-les-Anvers, Antwerp		
13b	Horse and Rider finial from Hitchin, Hertfordshire		
13c	Leg of knight finial from Eresby, Lincolnshire		
14a	Horse and rider finial from Totnes, Devon		
14b	Horse and rider finial from Polperro, Cornwall		
14c	Horse and rider finial from Bridport, Dorset		
14d	Horse and rider finial from Plymouth, Devon		
15a	Knight finial from Bruges, Belgium		
15b	Knight finial from Bruges, Belgium		
15c	Knight finial from Ghent, Belgium		
15d	Knight finial from Ghent, Belgium		
16	Knight finial from Chateau de Sarcus, Oise, France		

Fig	1	Location Plan for Mill Street Excavations	100
	2	43 Mill Street: plans	101
	3	Litson's Timber Yard: plan and sections	102
	4	Howard Street: plans and sections	104
	5	Pottery	107
	6	Pottery	109
	7	Pottery	110
	8	Pottery	111
	9	Knight Finial, 43 Mill Street, Bedford	113
	10	Distribution of post-medieval horse and rider finials in south-west England	117
	11	Horse Head of finial, St Omer, Pas-de-Calais	120
	12	Distribution map of medieval knight finials and horse and rider finials in England Belgium and France	121
	13	Decorated Tiles	124
	14	Small Finds	126

*A Palimpsest Brass at Dunstable*

Fig	1	The Fynche Brass in Dunstable Priory Church	129
	2	Obverses and reverses of the figures of the Fynche brass	130 and 131
	3	Obverses and reverses of the shields of the Fynche brass	132
	4	Reconstruction of the engravings on the reverse of the Fynche brass	133
	5	Obverses and reverses of the children of the Fynche brass	134