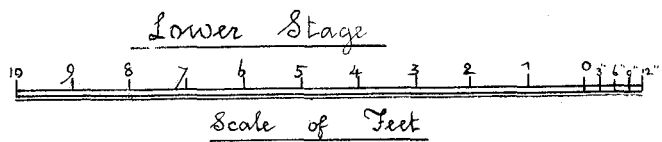
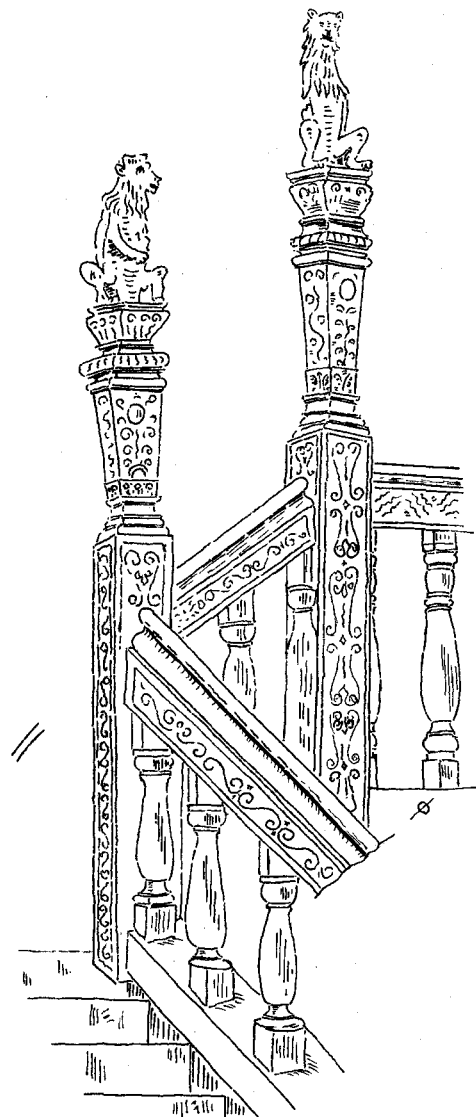
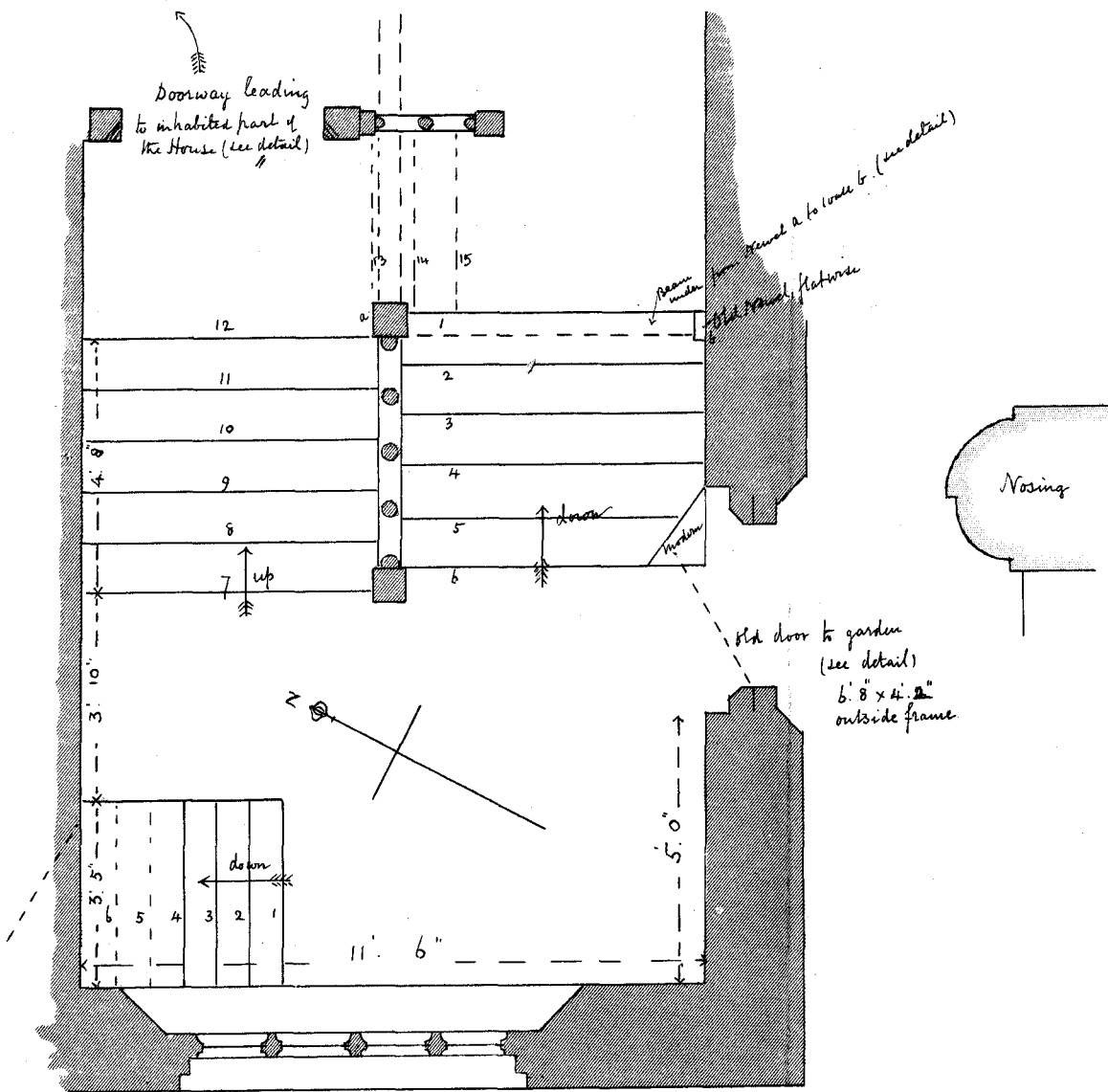


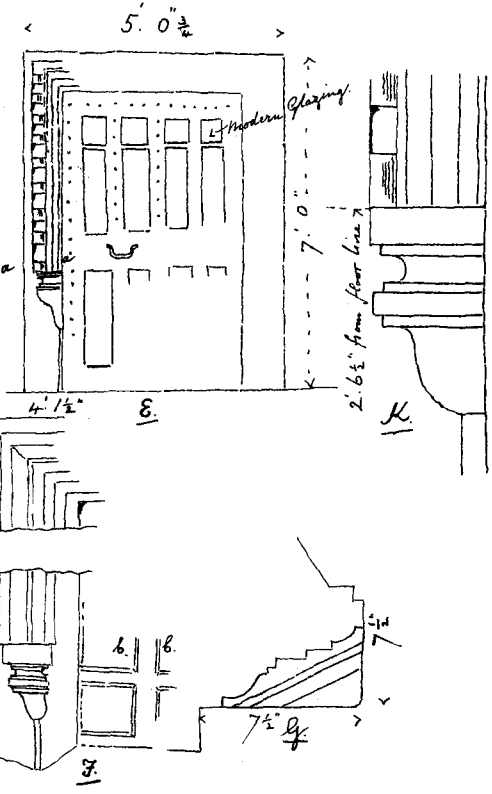
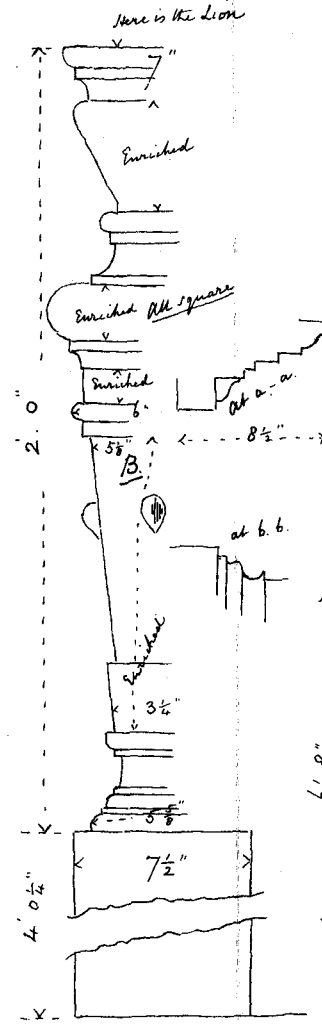
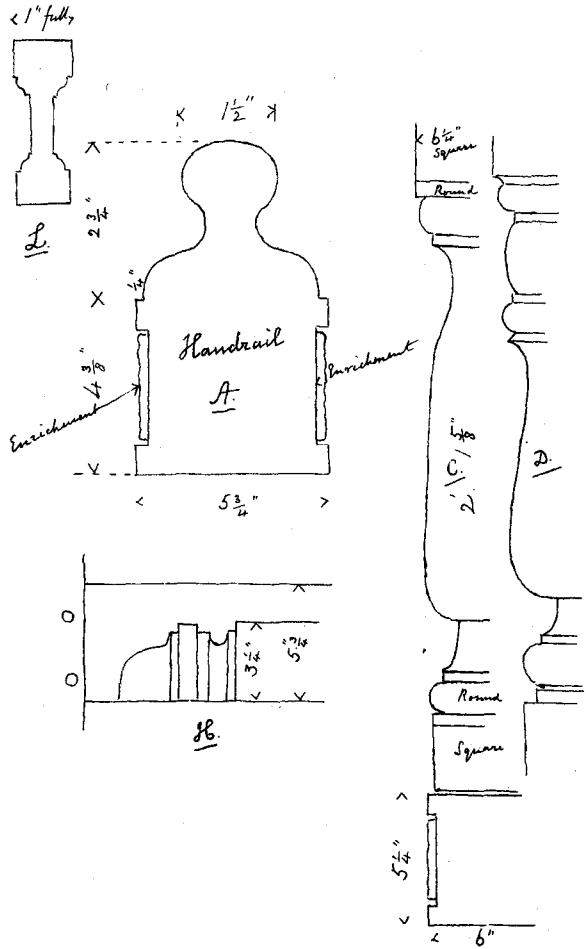
THE STAIRCASE, BEACHAMPTON HALL.

Sheahan, in his History of this County, tells us that in 1470 the manor belonged to John Pigott, whose wife, Isabel, daughter and heir of John Edy, Esq., of Stony Stratford, brought Loughton to the Pigotts. About 1609 Thomas Pigott, Esq., disposed of it to Sir Thomas Benet, Knight, Lord Mayor of London.

One or other of the two last-mentioned owners must have been the builder of this house, or more probably the re-builder. It is situated on the bank of the Ouse, between Buckingham and Stony Stratford. The greater part of it was taken down in the 18th century, the materials being used for the farm buildings. "A very fine carved oak staircase leads up to the banqueting hall (more likely great-chamber), "which is panelled to the ceiling with oak, and the window still contains the royal arms in stained glass" (P. O. D.). This seems to support the tradition that Katherine Parr lived in this house.

The plan and details here given are by Mr. S. Harris, F.R.I.B.A., and the photo view by Mr. W. H. Marsh, B.Sc.





OAK STAIR. ETC.
BEACHAMPTON HALL. BUCKS.

Edwin Harris: F.R.I.B.A.
mens. et del.

2 Aug. 1883.

A. Handrail. B. Newel post. C. Baluster. D. Baluster on Upper Flight.
E. Door at // F. Jamb of Door at top of first flight. G. Plan of ditto
H. Stop on Beam which carries landing at // K. Stop of Architrave to door at top of 1st flight
L. Rail of Gate (part of Orig^l Stair for protecting the children).