

## FOUR BRONZE IMPLEMENTS.

BY EDWIN HOLLIS.

The four implements illustrated with this article have, I believe, not previously been described. Together they form a very interesting series, as they illustrate the principal stages along which these implements developed.

No. 1 (Date circa 1800-1600 B.C.) is a flanged axe belonging to a very early stage of the Bronze Age, when bronze had more than 90 per cent. of copper.

It has only the faintest indication of a stop-ridge, and the flanges, which are very slight, have probably been produced by hammering, not by casting (Plate I.).

Unfortunately the patina, which has been very fine, has perished over a considerable portion of the surface. No sign of engraved ornament can be seen. This and No. 3, both from the collection of Mr. A. E. Taplin, of High Wycombe, are now on loan in the Bucks County Museum. It was found in a ditch in a brick field at Hazlemere, near High Wycombe, in 1913. The writer subsequently visited the spot and had a short length of the ditch excavated. A few fragments of pottery of typical Roman forms, and some burnt stones, all of which are now in the Museum at Aylesbury, were found, but nothing of earlier date. They are in store cupboard, and numbered 297/13. The ditch where excavated could not have been anything in the nature of a defensive work, for it was only about two feet wide, and the same in depth, but the workmen say it widens out a little in some places.

No. 2 (Date 1000-800 B.C.), now in Bucks County Museum, No. 86/24, was originally in the collection of the late Mr. R. S. Downs. It was found slightly north of The Bird in Hand, between High Wycombe and West Wycombe at about the 400ft. contour line. This is a small narrow palstave with no loop, of uncommon form. There appears to be nothing identical in the British Museum, the nearest examples being

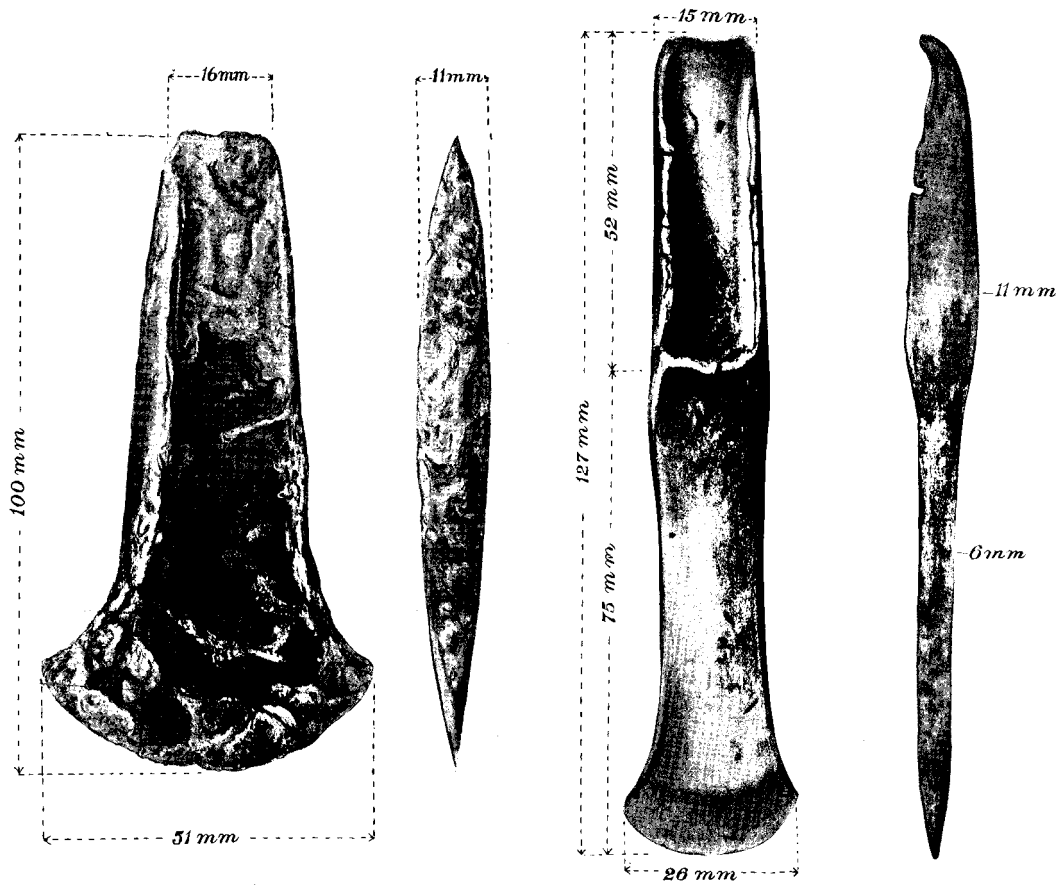


Plate No. 1.

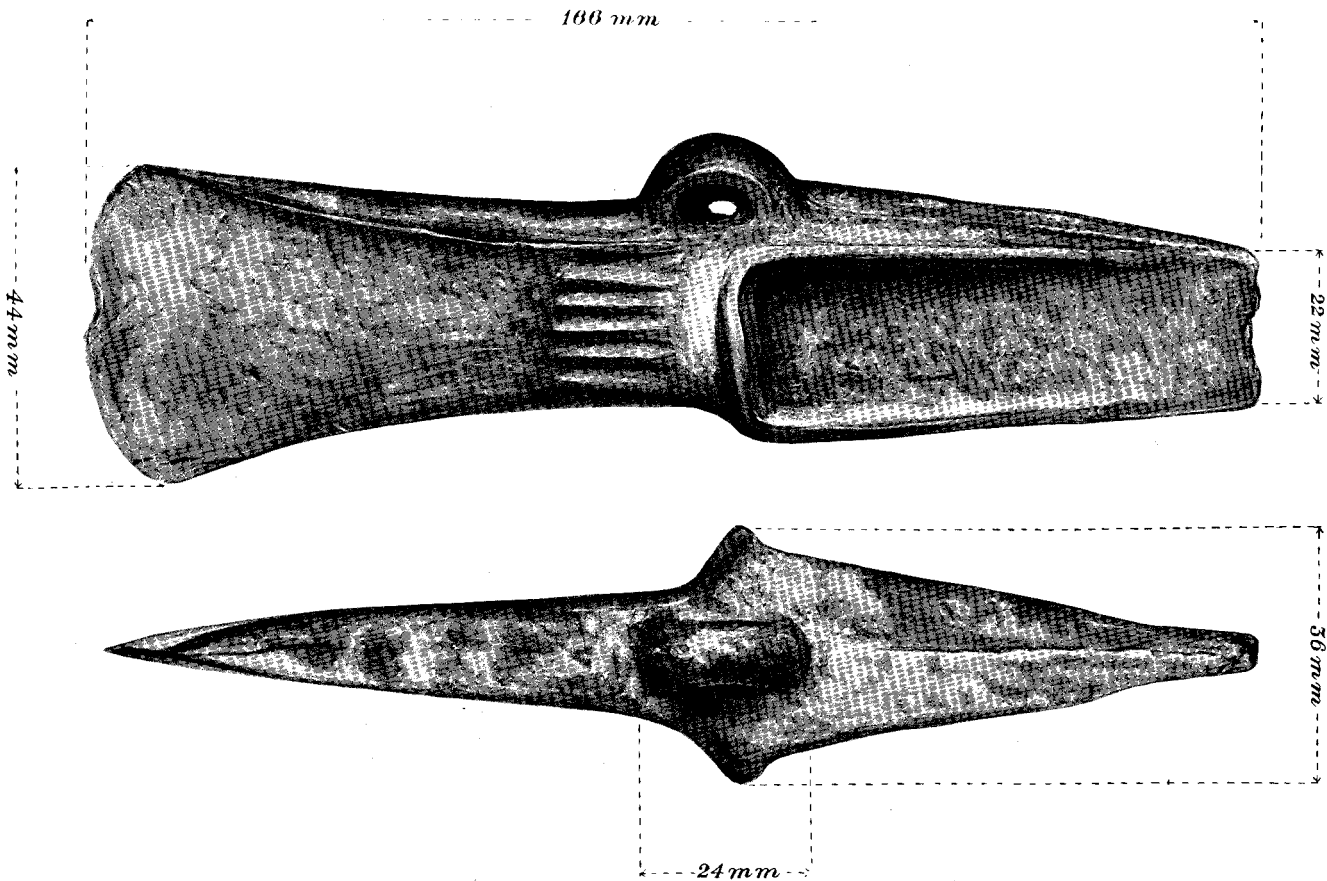


Plate No. 2.

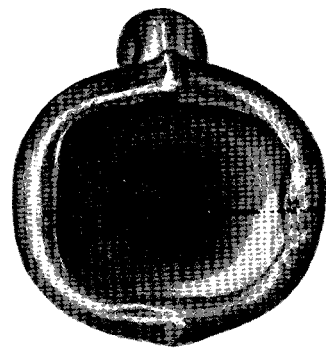
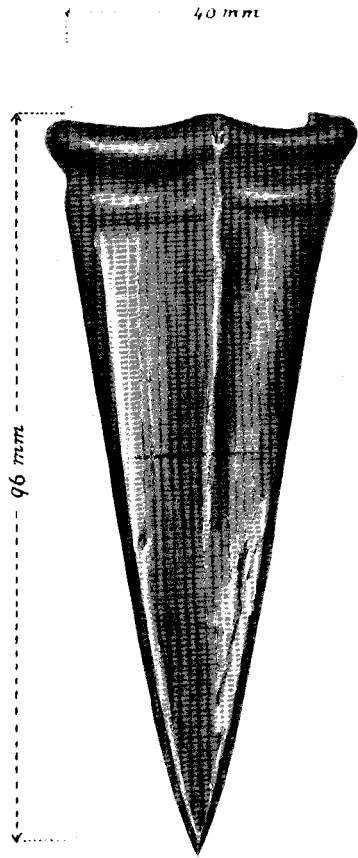
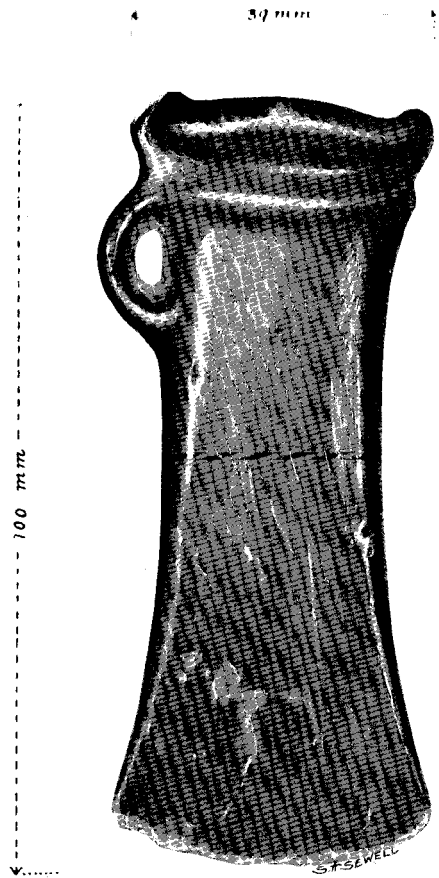


Plate No. 3.

specimens from Burwell, Cambs. (case 53 below), Quy Fen, Cambs. (case 54 below), and Farley Heath, Surrey (case 56 below), all of which are slightly wider at the cutting edge. There is no record of it having been found with any associated objects (Plate I.).

No. 3 (Date 1400-1200 B.C.), a heavy looped palstave of a common type, was found in a sandpit slightly north of Yewden at Hambleden. There is no record of associated objects (Plate II.).

No. 4 (Date 1000-900 B.C.), a looped and socketed celt, is now in the Bucks County Museum, No. 186/24. It was found by some boys in 1922 under a ledge of rock in Jack Iron-cap Lane, Green End, Great Brickhill. Fragments of pottery are said to have been found at the same time, but unfortunately these were not preserved. The celt is of quite an ordinary form, so detailed description is unnecessary (Plate III.).

The dates assigned above have been gathered from the best authorities, but may be subject to some revision as further dateable material is discovered.

The Bronze Age is very poorly represented in the Society's collection, and they would be exceedingly glad to receive gifts of specimens found in Bucks. There are probably many specimens hidden away in drawers throughout the county, and others will turn up from time to time. It is hoped that members of the Society will endeavour to secure any that they may see for the Museum collection.