

## CHETWODE PRIORY.

(Further particulars, continued from Vol. I., p. 206, and communicated by the Rev. E. L. SMITH.)

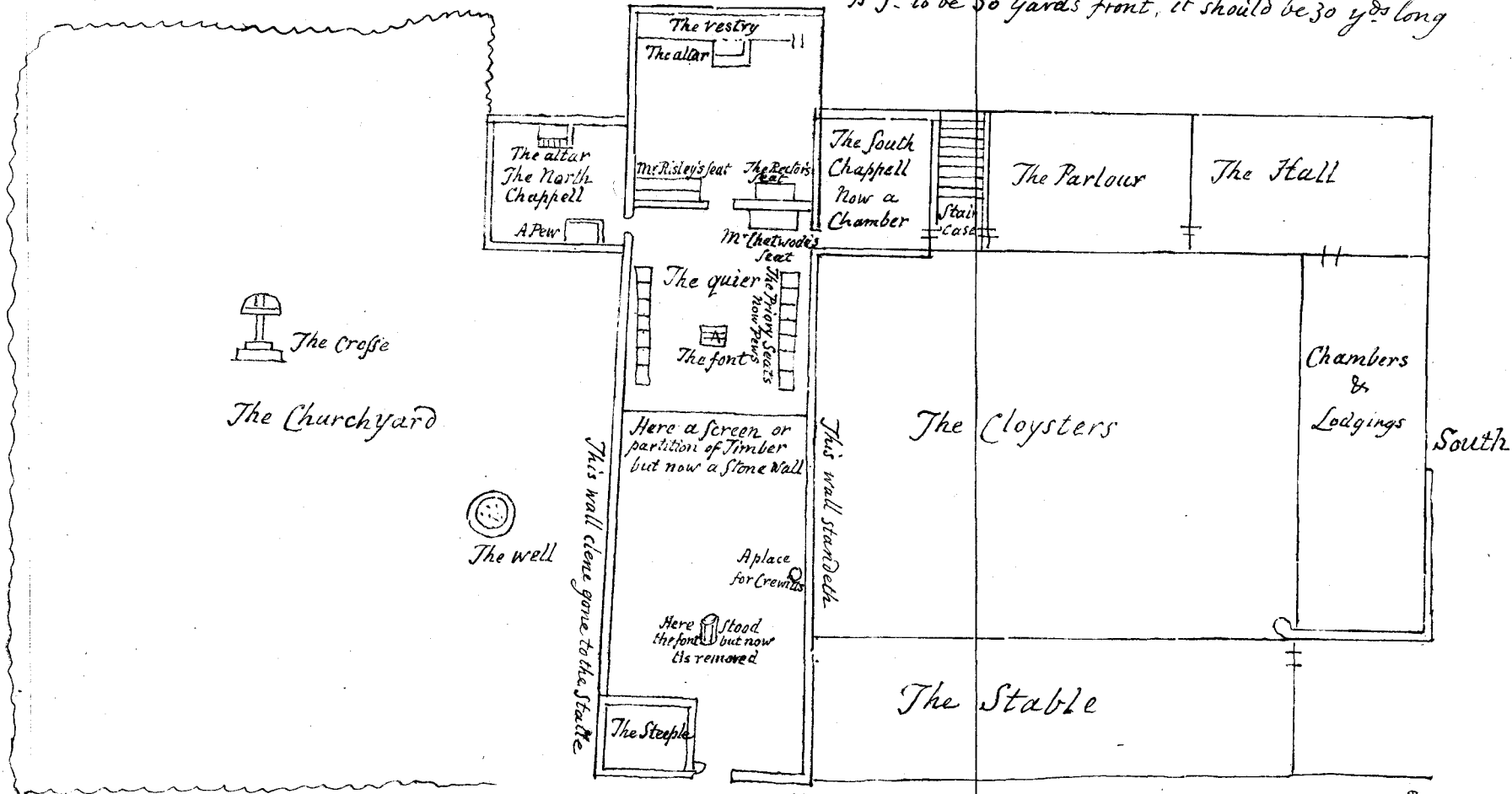
The accompanying plan is taken from Browne Willis's MSS., Vol. xxii., in the Bodleian Library, Oxford.

The ancient Priory was founded about 1244 by Ralph De Norwich, in honour of St. Mary and St. Nicholas. It was burnt down in the reign of Edward I., and afterwards only partially rebuilt. In 1303, the Rectory of Barton was appropriated to it, and in 1391 the Rectory of Chetwode. The Priory was dissolved on account of poverty in 1460, and annexed to the Abbey of Nutley. In 1480 it was opened for divine worship, on account of the dilapidated state of the parish church, which was finally demolished in the reign of Queen Elizabeth. In 1541 the Rectories of Barton and Chetwode passed by deed of gift (or rather by grant after payment, dated June 21, in the 32nd year of Henry VIII.) from Henry VIII. to William Risley, and Alice his wife, and their successors.

All that now remains of the Priory is the "Quire," together with the North Chapel. In or about the year 1822, the North Chapel and the walls of the chancel, except the western end of the south wall, were taken down and rebuilt. The part that was preserved in the south wall contains a very high window, which no doubt overlooked the South Chapel, and was above the entrance to it.

East

This Draught was made in Queen Elizabeth's time of the Priory Church of Chetwoode which at the Bottom is  $5^2$  to be 30 yards front, it should be 30 yds long



The Churchyard



Chetwoode. Scheme of the Priory taken from an old one in Queen Elizabeth's time

Weste

Here cometh the Highway