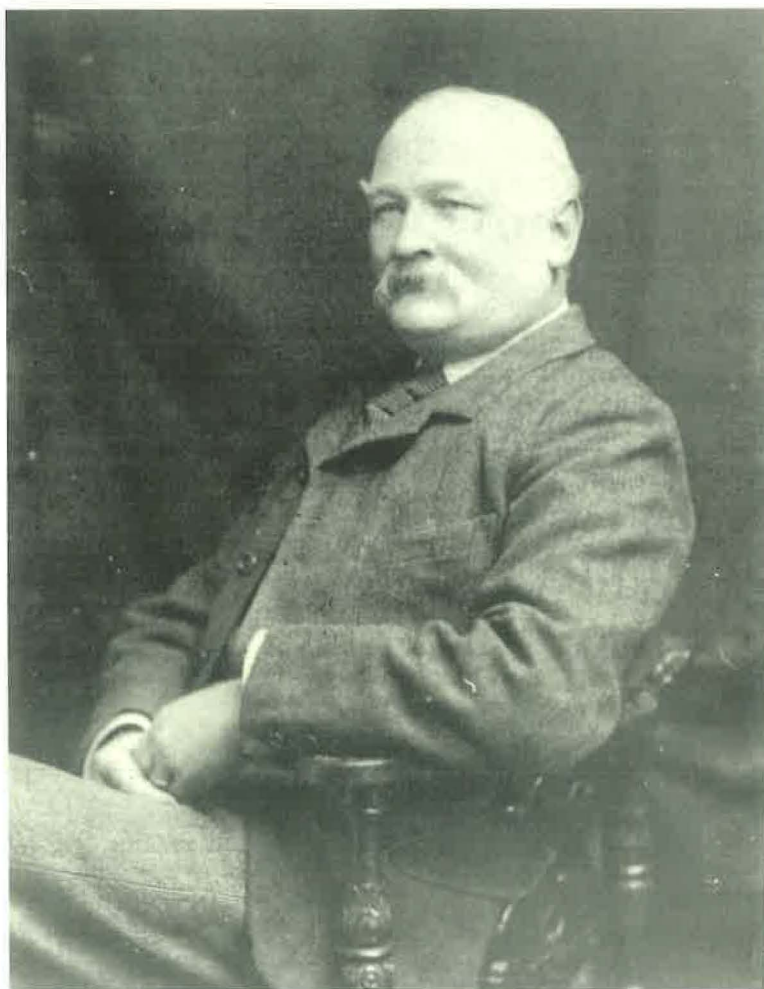


# RECORDS OF BUCKINGHAMSHIRE



## Volume 32 1990

Including Index to Vols 29–32



E. J. Payne, Recorder of High Wycombe.  
See 'A Buckinghamshire Polymath', p. 120.

# RECORDS OF BUCKINGHAMSHIRE

BEING THE JOURNAL  
OF THE ARCHITECTURAL AND  
ARCHAEOLOGICAL SOCIETY FOR THE  
COUNTY OF BUCKINGHAM

Edited by  
JOHN CHENEVIX TRENCH, FSA

Associate Editor  
M. E. FARLEY, FSA

VOLUME 32  
1990

BUCKS ARCHAEOLOGICAL SOCIETY  
CHURCH STREET, AYLESBURY

ISBN 0 949003 06 9



## CONTENTS

The Hidation of Buckinghamshire <i>Keith Bailey MA</i> .....	1
A Fifteenth-Century Pottery and Tile Kiln at Leyhill, Latimer, Buckinghamshire <i>Michael Farley, BA, MIFA, FSA &amp; Jo Lawson BA</i> .....	35
Wynflæd v. Leofwine: a Dacet Lawsuit of 990 <i>Arnold H. J. Baines, MA, PhD, FSA, FRHistSoc, FRSA, FSS</i> .....	63
The Coprolite Industry in Buckinghamshire <i>Bernard O'Connor</i> .....	76
Coldhabour Farm, Aylesbury, an Archaeological Investigation <i>Ian J. Stewart, BA</i> .....	91
The Puzzle of the Priestly Effigy in Ivinghoe Church <i>R. P. Hagerty, PhD</i> .....	105
A Buckinghamshire Polymath: Edward John Payne <i>John Catch, BSc, Phd</i> .....	120
The Conservation of the Reynes Monuments and Font at Clifton Reynes <i>N. J. Berrel LDA, RCS Eng</i> .....	130
Sir Albert Richardson in Wendover: a Microcosm of an Architectural Career <i>Ian Toplis, PhD, DipArch, RIBA</i> .....	137
Archaeological Notes .....	147
Notes:	
A Lost White Horse on Pitstone Hill? .....	151
Two Medieval Seals .....	151
An Early Nineteenth-century Ice House in Hedgerley Park .....	152
Two Geological Sites in the North Buckinghamshire Area .....	155
The Museum .....	158
County Record Office .....	159
Reviews .....	160
The Society .....	162
Natural History Section .....	163
Officers of the Society .....	165
Index to Vols. 29–32 .....	166