

RADIOCARBON DATING CERTIFICATE

31 October 2022

Laboratory Code SUERC-106946 (GU62119)

Submitter Emma Aitken
Cotswold Archaeology
Unit 8 The IO Centre
Fingle Drive
Stonebridge
Milton Keynes MK13 0AT

Site Reference Land at Dawes Farm, Bridgwater

Context Reference 1006

Sample Reference DAW18-1006 <1>

Material Charcoal : Hazel (*Corylus avellana*)

$\delta^{13}\text{C}$ relative to VPDB -24.0 ‰

Radiocarbon Age BP 2893 \pm 29

N.B. The above ^{14}C age is quoted in conventional years BP (before 1950 AD) and requires calibration to the calendar timescale. The error, expressed at the one sigma level of confidence, includes components from the counting statistics on the sample, modern reference standard and blank and the random machine error.

Samples with a SUERC coding are measured at the Scottish Universities Environmental Research Centre AMS Laboratory and should be quoted as such in any reports within the scientific literature. The laboratory GU coding should also be given in parentheses after the SUERC code.

Detailed descriptions of the methods employed by the SUERC Radiocarbon Laboratory can be found in Dunbar et al. (2016) *Radiocarbon* 58(1) pp.9-23.

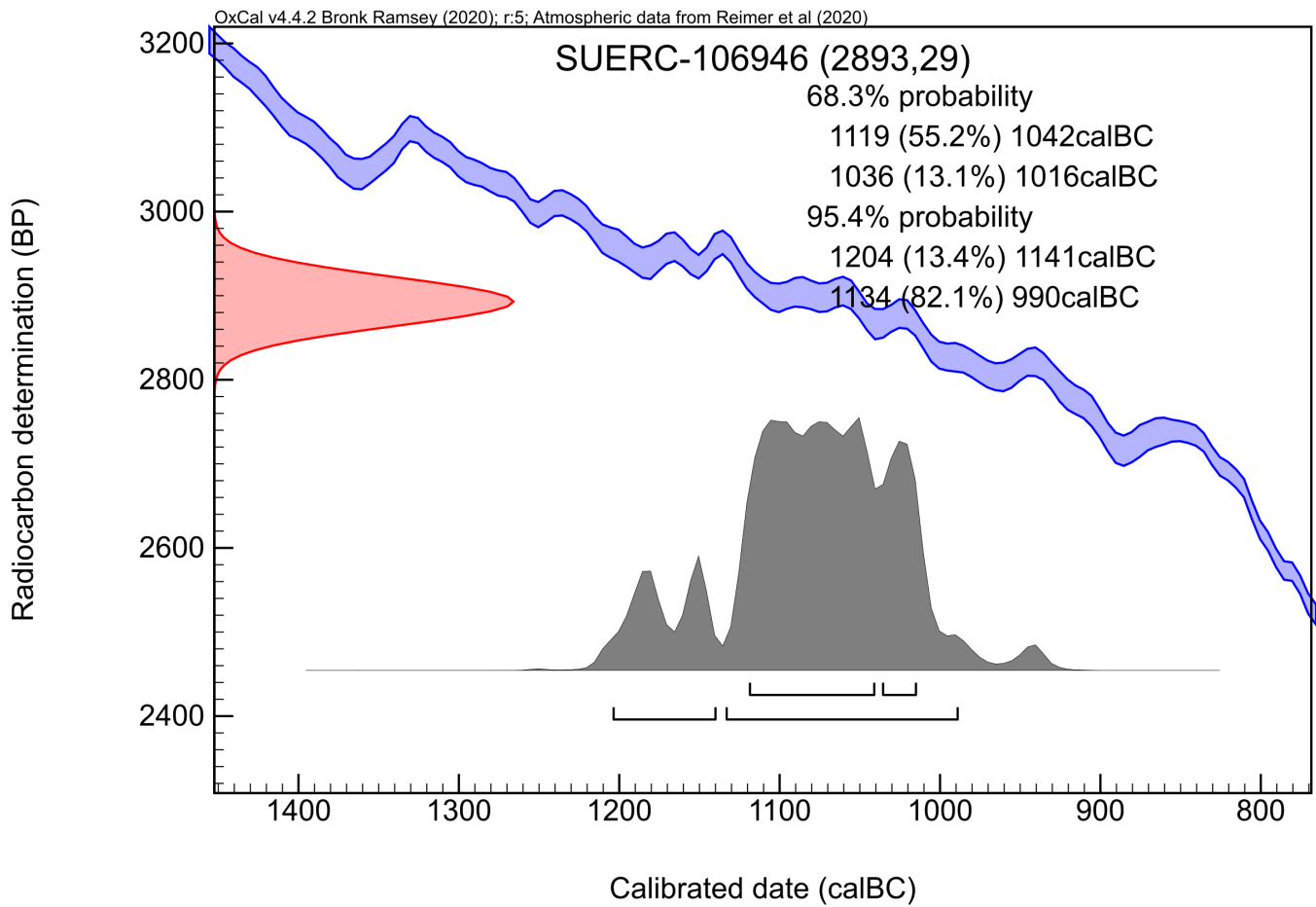
For any queries relating to this certificate, the laboratory can be contacted at suerc-c14lab@glasgow.ac.uk.

Conventional age and calibration age ranges calculated by :

E. Dunbar

Checked and signed off by :

P. Naynt



The radiocarbon age given overleaf is calibrated to the calendar timescale using the Oxford Radiocarbon Accelerator Unit calibration program OxCal 4.*

The above date ranges have been calibrated using the IntCal20 atmospheric calibration curve†

Please contact the laboratory if you wish to discuss this further.

* Bronk Ramsey (2009) *Radiocarbon* 51(1) pp.337-60

† Reimer et al. (2020) *Radiocarbon* 62(4) pp.725-57

RADIOCARBON DATING CERTIFICATE

31 October 2022

Laboratory Code SUERC-106947 (GU62120)

Submitter Emma Aitken
Cotswold Archaeology
Unit 8 The IO Centre
Fingle Drive
Stonebridge
Milton Keynes MK13 0AT

Site Reference Land at Dawes Farm, Bridgwater

Context Reference 1050

Sample Reference DAW18-1050 <3>

Material Charcoal : Hazel (*Corylus avellana*)

$\delta^{13}\text{C}$ relative to VPDB -24.5 ‰

Radiocarbon Age BP 2457 \pm 24

N.B. The above ^{14}C age is quoted in conventional years BP (before 1950 AD) and requires calibration to the calendar timescale. The error, expressed at the one sigma level of confidence, includes components from the counting statistics on the sample, modern reference standard and blank and the random machine error.

Samples with a SUERC coding are measured at the Scottish Universities Environmental Research Centre AMS Laboratory and should be quoted as such in any reports within the scientific literature. The laboratory GU coding should also be given in parentheses after the SUERC code.

Detailed descriptions of the methods employed by the SUERC Radiocarbon Laboratory can be found in Dunbar et al. (2016) *Radiocarbon* 58(1) pp.9-23.

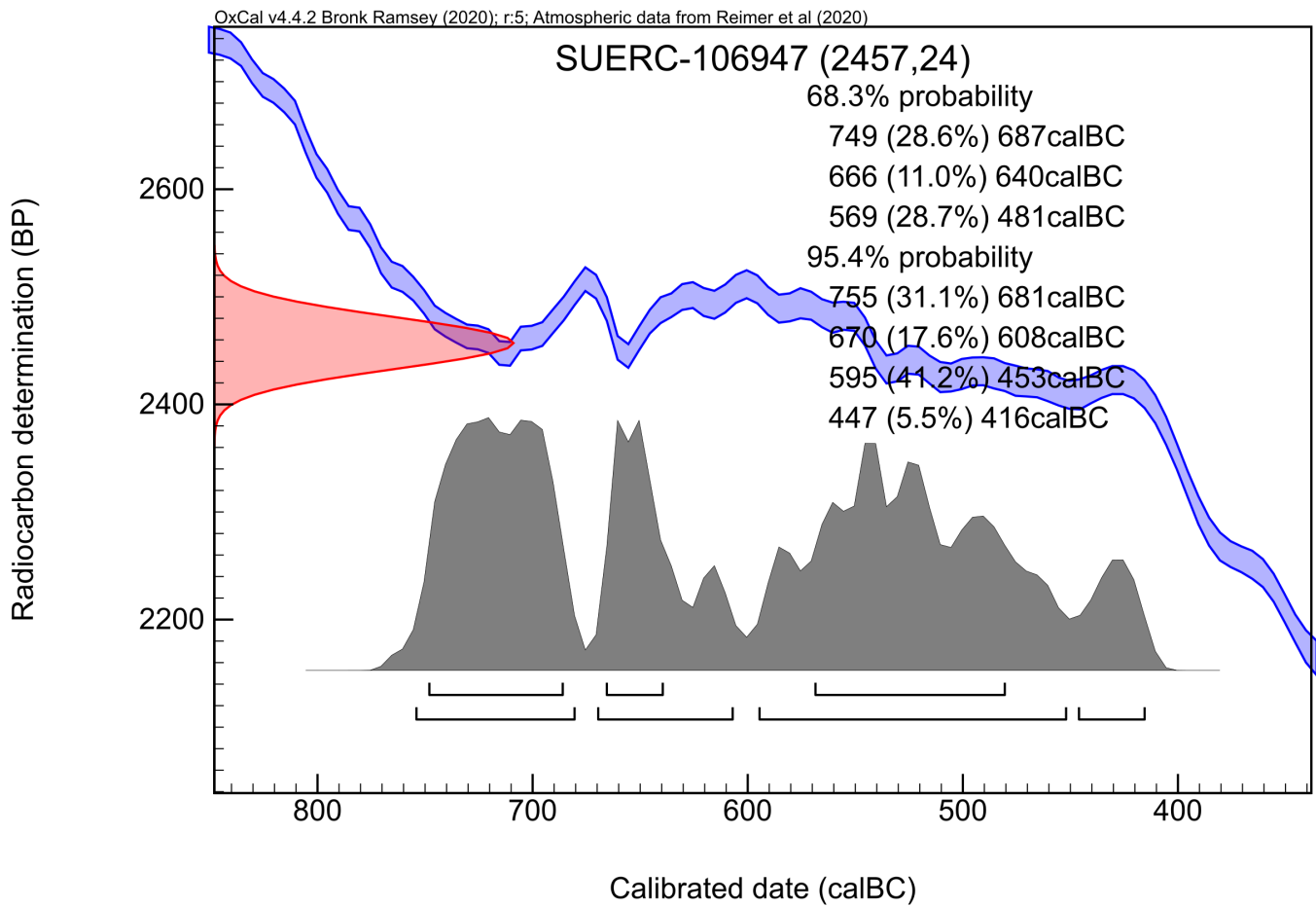
For any queries relating to this certificate, the laboratory can be contacted at suerc-c14lab@glasgow.ac.uk.

Conventional age and calibration age ranges calculated by :

E. Dunbar

Checked and signed off by :

P. Nayantub



The radiocarbon age given overleaf is calibrated to the calendar timescale using the Oxford Radiocarbon Accelerator Unit calibration program OxCal 4.*

The above date ranges have been calibrated using the IntCal20 atmospheric calibration curve†

Please contact the laboratory if you wish to discuss this further.

* Bronk Ramsey (2009) *Radiocarbon* 51(1) pp.337-60

† Reimer et al. (2020) *Radiocarbon* 62(4) pp.725-57