

**LAND TO THE REAR OF  
10 CHURCH WALK  
HARROLD  
BEDFORDSHIRE**

**INTERIM REPORT ON ARCHAEOLOGICAL  
OBSERVATION, INVESTIGATION,  
RECORDING AND ANALYSIS**

**Albion**  
archaeology



**LAND TO THE REAR OF  
10 CHURCH WALK  
HARROLD  
BEDFORDSHIRE**

**INTERIM REPORT ON ARCHAEOLOGICAL  
OBSERVATION, INVESTIGATION,  
RECORDING AND ANALYSIS**

Project: CW1858  
Accession Code: BEDFM:2011.66

Document: 2011/136  
Version: 1.0

Compiled by	Edited by	Authorised by
David Ingham	Robert Wardill	Drew Shotliff

31st October 2011

Prepared on behalf of:  
Mrs B Millman



## ***Contents***

---

<b>1. INTRODUCTION</b>	<b>5</b>
1.1 Background	5
1.2 Site Location and Description	5
1.3 Archaeological Background	5
<b>2. METHODOLOGY</b>	<b>7</b>
2.1 Introduction	7
2.2 Methodology	7
2.3 Project Archive	7
<b>3. RESULTS AND CONCLUSIONS</b>	<b>8</b>
3.1 Contextual Summary	8
3.2 Finds Summary	8
3.3 Conclusions	8
<b>4. BIBLIOGRAPHY</b>	<b>9</b>

## **LIST OF FIGURES**

Figure 1: Site location plan and selected photographs

*The figure is bound at the back of the report.*



## Preface

Every effort has been made in the preparation and submission of this document, and all statements are offered in good faith. Albion Archaeology cannot accept responsibility for errors of fact or opinion resulting from data supplied by a third party, or for any loss or other consequence arising from decisions or actions made upon the basis of facts or opinions expressed in this document.

This report has been prepared by David Ingham (Project Officer) and Jackie Wells (Artefacts Officer), and edited by Robert Wardill (Project Manager). Anna Rebisz-Niziolek (Assistant Archaeological Supervisor) undertook the fieldwork. All Albion Archaeology projects are under the overall management of Drew Shotliff (Operations Manager).

Albion Archaeology is grateful to Mrs Beryl Millman for commissioning the project. We would also like to acknowledge the assistance of Geoff Saunders of Bedford Borough Council's Historic Environment Team who monitored the project on behalf of the Local Planning Authority.

Albion Archaeology  
 St Mary's Church  
 St Mary's Street  
 Bedford, MK42 0AS  
 ☎: 0300 300 8141  
 Fax: 0300 300 8209  
 E-mail: office@albion-arch.com  
 Website: www.albion-arch.com

Version	Issue date	Reason for re-issue
1.0	31/10/11	N/A

## Key Terms

The following terms or abbreviations are used throughout this report:

BBC	Bedford Borough Council
HER	Historic Environment Record
HET	Historic Environment Team
IfA	Institute for Archaeologists
<i>Procedures Manual</i>	<i>Procedures Manual Volume 1 Fieldwork</i> , 2nd edn, 2001 Albion Archaeology
WSI	Written Scheme of Investigation



## **Non-Technical Summary**

*Bedford Borough Council has granted planning permission for the construction of a new house and cycle storage shed on land to the rear of 10 Church Walk, Harrold, Bedfordshire. Due to the high archaeological potential of the site, the council's Historic Environment Team advised that a condition should be attached to the planning consent requiring the implementation of a programme of archaeological work.*

*Albion Archaeology was commissioned to prepare a Written Scheme of Investigation, and to carry out the subsequent programme of archaeological works. Due to a potentially lengthy hiatus in the construction programme, this interim report covers only the preliminary groundworks comprising the excavation of a drainage trench.*

*The site is situated on level ground near the centre of Harrold at SP 9526 5672, at a height of c. 43m OD. The river Great Ouse flows c. 100m to the south. The underlying drift geology consists of river terrace sands and gravels.*

*Harrold has a rich archaeological and historical background, and remains dating to all periods since early prehistory have been recorded during both quarrying and housing developments. Building work in the vicinity of Church Walk has produced a range of evidence for medieval settlement. Medieval ditches and pits were recorded c. 100m north-east of the site, while medieval pottery and pits, together with human bone, have also been found on the opposite side of the road at nos 15 and 17 Church Walk. Archaeological investigations in advance of building work at 10 Church Walk in 2004 identified a ditch which has tentatively been dated to the Roman period.*

*Monitoring of the drainage trench on 12th–13th October 2011 revealed that it was not deep enough to expose undisturbed geological deposits. No archaeological features were discovered, although the subsoil in one part of the trench produced a moderate assemblage of medieval pottery. The remainder of the groundworks associated with the building construction will be monitored in due course.*



## 1. INTRODUCTION

---

### 1.1 **Background**

A planning application (10/01556/FUL) has been approved by Bedford Borough Council (BBC) for the construction of a new dwelling and cycle-storage shed on land to the rear of 10 Church Walk, Harrold, Bedfordshire. Due to the high archaeological potential of the site, the Historic Environment Team (HET) of the BBC recommended a condition was attached to the planning consent requiring the implementation of a programme of archaeological work. This recommendation was in accordance with the guidelines contained in *Planning Policy 5: Planning for the Historic Environment* (DCLG 2010). The requirements of this programme of work were set out in a brief supplied by the HET (BBC 2011).

Albion Archaeology was commissioned to prepare a Written Scheme of Investigation (Albion Archaeology 2011) in accordance with the requirements of the brief, and to carry out the subsequent programme of archaeological works.

This interim report describes the results from the initial phase of groundworks that comprised the excavation of a trench for the installation of drains for the new development. A further report will be prepared following completion of the main groundworks associated with the construction of the new house. A date for this work is yet to be confirmed but it is not anticipated to commence until 2012.

### 1.2 **Site Location and Description**

The site is situated on level ground near the centre of the village of Harrold at SP 9526 5672, at a height of *c.* 43m OD. The river Great Ouse flows *c.* 100m to the south. The underlying geology consists of argyllic brown earths over fine loams with a substrate of alluvial valley gravels, which in turn overlie solid geology of oolitic limestone.

### 1.3 **Archaeological Background**

The historical and archaeological background to Harrold has been summarised in the Extensive Urban Survey, undertaken by English Heritage and Bedfordshire County Council (Albion Archaeology 2003).

The current house on the plot was built in the second half of the 20th century. Archaeological investigations in advance of the construction of a side extension, porch and conservatory identified a ditch which was tentatively dated to the Roman period (Albion Archaeology 2004).

Building work elsewhere in the vicinity of Church Walk has produced a variety of evidence for medieval settlement. Approximately 100m north-east of the site, medieval ditches and pits were recorded in 1991 and 1992 (HER 16113), along with some post-medieval debris. Medieval pottery and pits, together with human bone, have also been found on the opposite side of the road, to the rear of nos 15 and 17 Church Walk (HER 16114).



Further afield, within and close to the village (*e.g.* HER 64, HER 543), physical remains dating to all periods since early prehistory have been recorded during both quarrying and housing developments. Excavations across the High Street, at the former Bridgman Joinery Works, produced evidence of extensive late Iron Age – Romano-British field systems and Saxon buildings (Luke and Preece, forthcoming), whilst high concentrations of medieval pottery and slag were found at the Priory Middle School to the west (Duncan *et al.*, forthcoming). Such a rich assemblage attests to the enduring attractiveness of the area as a place for settlement.



## 2. METHODOLOGY

---

### 2.1 Introduction

The archaeological observation was undertaken on 12th–13th October 2011. During this period, only groundworks associated with the installation of a new drainage pipe were carried out (Fig. 1). This comprised the excavation of a single trench using a mechanical excavator fitted with a toothless bucket. The trench was 0.3m wide, c. 0.7m deep and c. 40m long.

### 2.2 Methodology

The project adhered throughout to the standards set out in the IFA's *Code of Conduct and Standards and Guidance* documents, specifically *Standard and Guidance for an Archaeological Watching Brief* (October 2008), in English Heritage's *Management of Research Projects in the Historic Environment (MoRPHE) Project Managers Guide* (2006) and in Albion's *Procedures Manual*.

A full methodology is provided in the WSI (Albion Archaeology 2011).

### 2.3 Project Archive

The project archive will be deposited with Bedford Museum under accession code BEDFM 2011.66 once the project has been completed.

An OASIS online record of the project has been initiated under the reference albionar1 – 109098. The record will be finalised following the conclusion of the project.





### 3. RESULTS AND CONCLUSIONS

---

#### 3.1 Contextual Summary

No features of archaeological origin were identified within the trench. The top/garden soil extended to a depth of 0.3–0.35m, below which was a similarly thick deposit of subsoil. This was relatively uniform throughout the trench except for a 6m long section where the subsoil was more gravelly (Fig. 1), and where all of the recovered pottery was found. It is likely that the assemblage represents either a discrete deposit from a midden, or material that was drawn up into the subsoil, perhaps by ancient ploughing, from an underlying feature.

The base of the trench exposed a dark blue-grey deposit that appeared to be alluvial in origin, although this could not be definitively confirmed within the confines of the trench.

#### 3.2 Finds Summary

The finds assemblage mainly comprised pottery derived entirely from the subsoil. The earliest pottery comprises five shell-tempered body sherds (55g) in the St Neots-ware tradition (fabric types B01 and B01A<sup>1</sup>), datable to the 9th–11th centuries, and a handmade rim sherd (type B04A: 50g) of similar date.

The majority of the assemblage is of 12th–13th century origin, and comprises thirty-two sherds (556g) of wheel-thrown, shell-tempered pottery (type B05). Examples of this ware are well attested throughout the village, and areas of kiln activity are known in Harrold High Street (SP 947567) and in Brook Lane (SP 948569: Hall 1972). A sizeable pottery assemblage weighing in excess of 290kg was excavated at the Priory Middle School (Duncan *et al.*, forthcoming), thought to derive from nearby, as yet unlocated kilns. Vessel forms are jars (one decorated with a vertical applied thumbled strip), bowls and jugs, the latter represented by strap handles.

Later finds are a 15th–16th century sand-tempered rim sherd (type E03: 11g), two 17th-century black-glazed earthenware sherds (P03: 14g), a piece of sand-tempered flat roof tile (93g), and a basal fragment of a wine bottle (36g).

#### 3.3 Conclusions

Although the groundworks associated with the construction of a new dwelling and cycle shed at 10 Church Walk, Harrold have so far revealed no features of archaeological interest, the assemblage of pottery recovered from the subsoil further supports the site's potential to contain archaeological remains. The remaining groundworks will be monitored in due course.

---

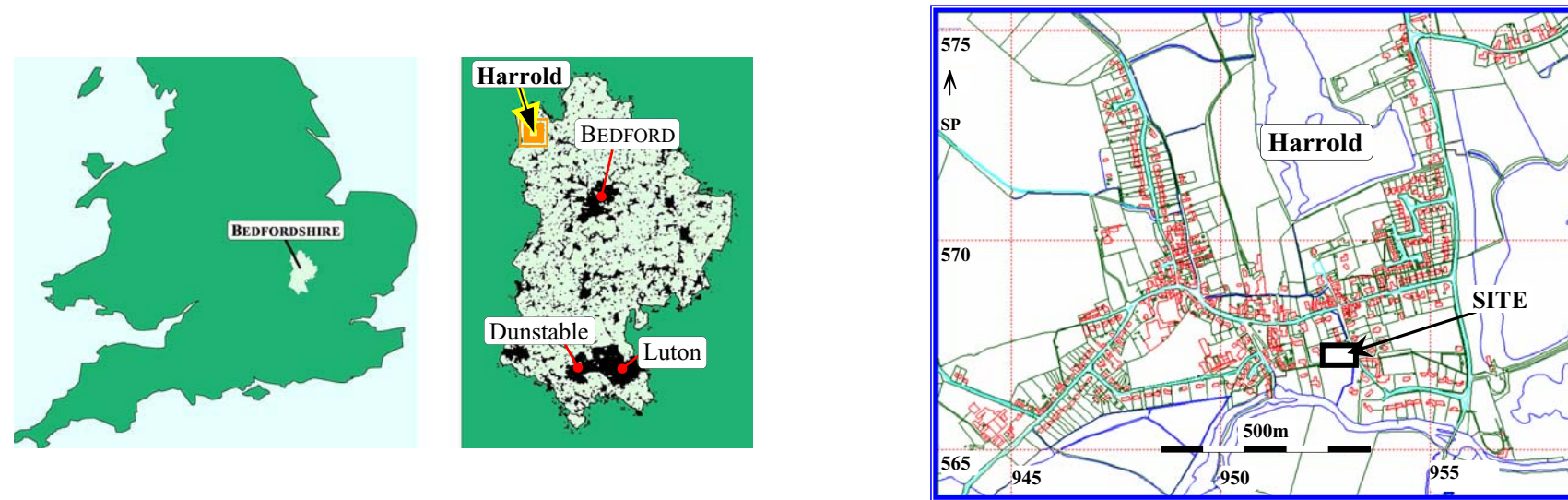
<sup>1</sup> Pottery fabric types are defined in accordance with the Bedfordshire Ceramic Type Series, currently maintained by Albion Archaeology.



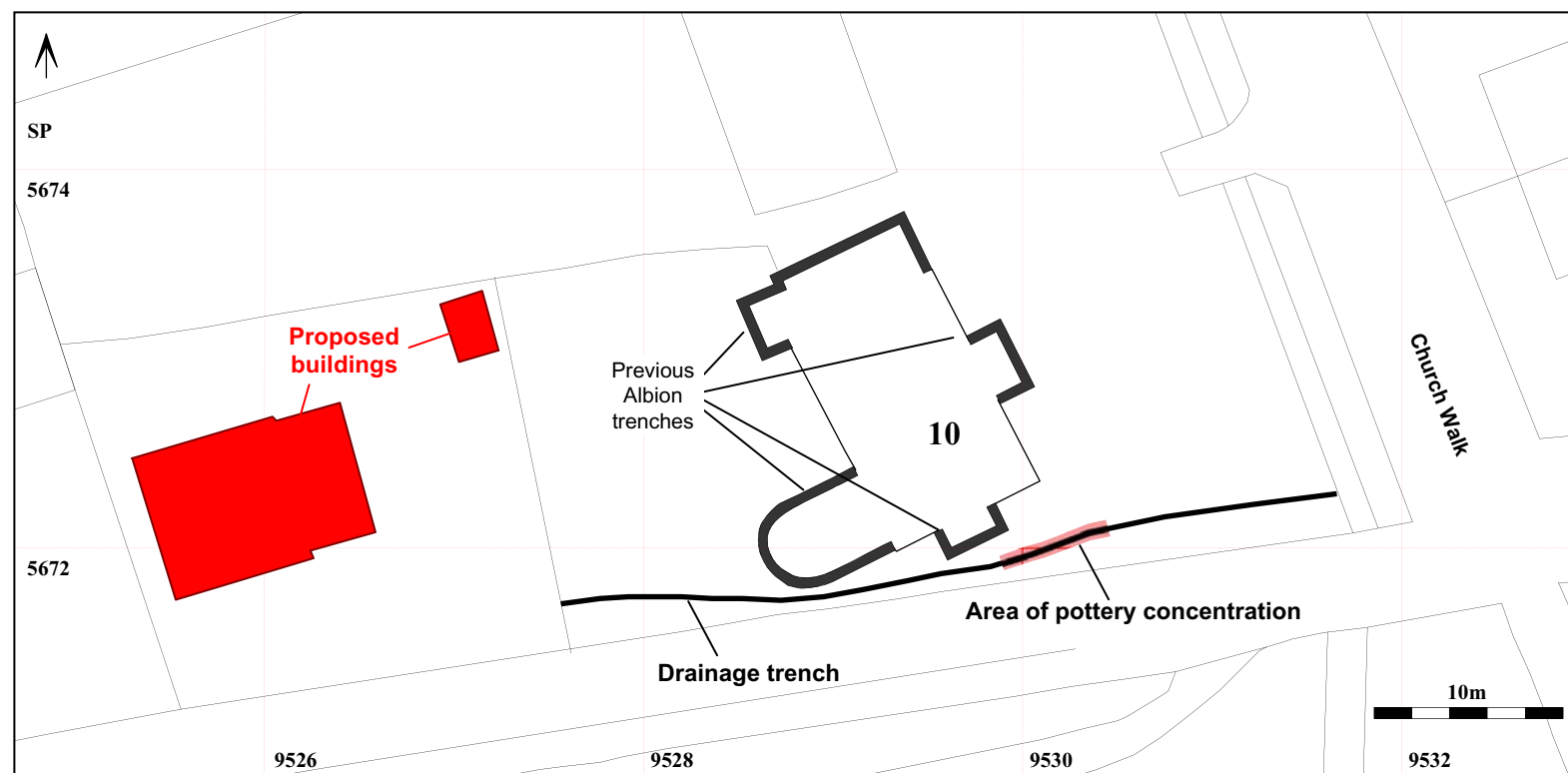
## 4. BIBLIOGRAPHY

---

- Albion Archaeology 2000: *Procedures Manual, Volume 1: Fieldwork. 2nd Edition*
- Albion Archaeology 2003: *Extensive Urban Survey for Bedfordshire: Harrold Archaeological Assessment*
- Albion Archaeology 2004: *Land at Wellocks, 10 Church Walk, Harrold, Bedfordshire: a Programme of Archaeological Observation, Investigation, Recording, Analysis and Publication*
- Albion Archaeology 2011: *Wellocks, 10 Church Walk, Harrold, Bedfordshire: Written Scheme of Investigation for Archaeological Observation, Investigation, Recording, Analysis and Publication*
- BBC 2011: *Brief for a Programme of Archaeological Observation, Investigation, Recording, Analysis and Publication of Wellocks, 10 Church Walk, Harrold, Bedfordshire*
- Duncan, H.B., Wells, J. and Wooding, J. forthcoming: *Evidence for early medieval occupation and pottery production from Harrold Priory Middle School, Albion Archaeology Occasional Paper 1*
- Hall, D.N. 1972: 'A Thirteenth Century Pottery Kiln Site at Harrold, Beds', *Milton Keynes Journal of Archaeology and History* 1, 23–32
- Luke, M. and Preece, T. forthcoming: *Evidence for multi-period activity at the former Bridgman Joinery Works, Harrold, Albion Archaeology Occasional Paper 1*

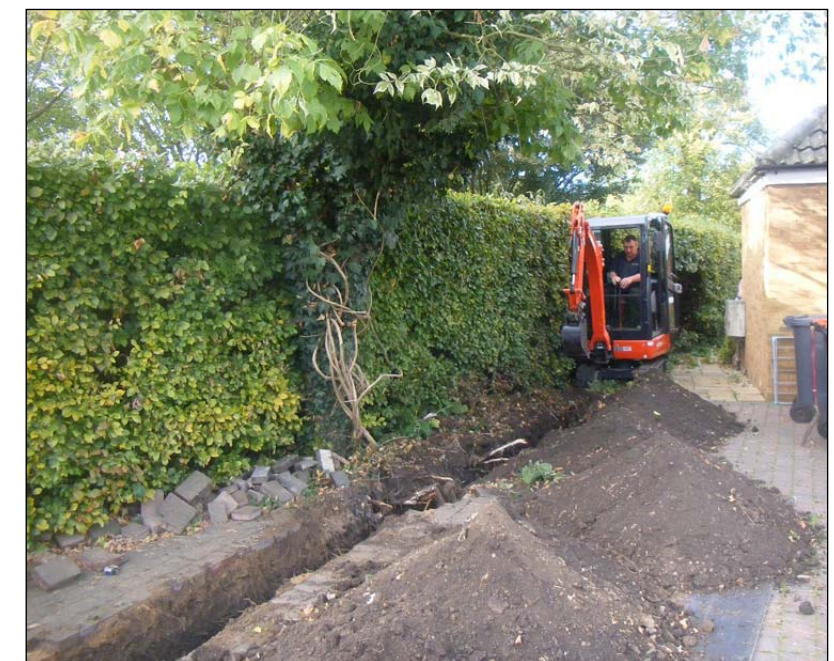


Photograph 1: general view of drainage trench from western end



**Figure 1: Site location plan and selected photographs**

This map is based upon Ordnance Survey material with the permission of Ordnance Survey on behalf of the Controller of Her Majesty's Stationery Office © Crown Copyright. Unauthorised reproduction infringes Crown Copyright and may lead to prosecution or civil proceedings. Central Bedfordshire Council. Licence No. 100049029 (2011)



Photograph 2: general view of drainage trench from eastern end



**Albion**  
archaeology



Albion Archaeology  
St Mary's Church  
St Mary's Street  
Bedford  
MK42 0AS

**Telephone** 01234 294000  
**Email** [office@albion-arch.com](mailto:office@albion-arch.com)  
[www.albion-arch.com](http://www.albion-arch.com)

