

**GREAT BARFORD
FLOOD ATTENUATION SCHEME
BEDFORDSHIRE**

**ARCHAEOLOGICAL
FIELD EVALUATION**

Document: 2006/39
Project: GBF1104

12th April 2006

Produced for:
Bedfordshire and River Ivel
Internal Drainage Board



Contents

List of Figures.....	2
Preface.....	3
Structure of this Report	3
Key Terms.....	4
Non-Technical Summary	5
1. INTRODUCTION	6
1.1 Project Background	6
1.2 Site Location and Description.....	6
1.3 Archaeological Background.....	6
1.4 Methodologies	7
1.5 Professional Standards	7
2. AIMS & METHOD STATEMENT	8
2.1 Trial trenching.....	8
3. RESULTS	9
3.1 Trial trenching results	Error! Bookmark not defined.
4. SYNTHESIS OF RESULTS	13
4.1 Discussion	13
4.2 Summary	14
5. BIBLIOGRAPHY	15
6. APPENDICES	16
6.1 Appendix 1 – Trench Summaries.....	16
6.2 Appendix 2 – Artefact Summary.....	30
Table 1: Artefact summary by trench and feature.....	30
Table 2: Pottery type series	31



List of Figures

- Figure 1: Site location map and trench plan
- Figure 2: All features plan
- Figure 3: Trench 1; all features
- Figure 4: Trenches 4, 5, 6 and 7; all features
- Figure 5: Selected sections

All figures are bound at the back of this report.



Preface

Every effort has been made in the preparation of this document to provide as complete an assessment as possible, within the terms of the specification. All statements and opinions in this document are offered in good faith. Albion Archaeology cannot accept responsibility for errors of fact or opinion resulting from data supplied by a third party, or for any loss or other consequence arising from decisions or actions made upon the basis of facts or opinions expressed in this document.

This report has been prepared by Christiane Meckseper (Project Officer). It was edited by Joe Abrams (Project Manager). Trial trenching was undertaken by Alison Bell and Ian Turner (Archaeological Supervisors), Zoë Clarke, Laura Hill and Victoria Osborn (Archaeological Technicians).

The artefact summary was prepared by Jackie Wells (Finds Officer). The figures were prepared by Joan Lightning (CAD Technician). All Albion projects are under the overall management of Drew Shotliff (Operations Manager).

*Albion Archaeology
St Mary's Church
St Mary's Street
Bedford, MK42 0AS
☎: 01234 294001
Fax: 01234 294008
e-mail: office@albion-arch.com
Website: www.albion-arch.com*

12th April 2006

Structure of this Report

Section 1 serves as an introduction to the site, describing its location, archaeological background and the aims of the project. Section 2 summarises the aims and methodology of the evaluation; the results are discussed in section 3. Section 4 provides a synthesis of the results, and states their significance within the surrounding landscape. Section 5 is a bibliography.

Appendix 1 contains all trench summary information. Appendix 2 contains a summary of the artefactual material. All figures are bound at the back of this report.



Key Terms

Throughout this document the following terms or abbreviations are used:

Albion	Albion Archaeology
AO	Bedfordshire County Council Archaeological Officer
Client	Bedfordshire and River Ivel Internal Drainage Board
HER	Historic Environment Record
IFA	Institute of Field Archaeologists
PD	Project Design



Non-Technical Summary

An archaeological evaluation was conducted in advance of proposed groundworks planned as part of the Great Barford Flood Attenuation Scheme carried out by The Bedfordshire and River Ivel Internal Drainage Board.

As the local planning authority's archaeological adviser, Bedfordshire County Council's Archaeological Officer (AO) issued a brief (BCC 2006), outlining a programme of archaeological work. This consisted of archaeological field evaluation in the form of trial trenching, and the subsequent implementation of an agreed programme of archaeological investigation and recording (if required).

The Bedfordshire and River Ivel Internal Drainage Board commissioned Albion Archaeology to undertake this archaeological field evaluation, and to prepare a report (this document) on the results. A Project Design was written on the basis of the brief (Albion Archaeology 2006).

The flood attenuation scheme is located approximately 800m north of Great Barford. It comprises an area of c.6.5ha and is centred at National Grid Reference (NGR) TL 12538 53338). It lies at c. 40mOD. The evaluation focused on the part of the scheme that is located to the west of the watercourse and measures c.3.5ha in extent. The underlying geological strata comprise chalky boulder clay.

An assessment of the HER and recent archaeological work (Northamptonshire Archaeology 2004, Oxford Archaeology 2005) indicated that archaeological remains exist in the immediate vicinity to the north and north-west of the flood attenuation scheme.

The evaluation has revealed that the northern part of the development area, centred on Trench 1, contains significant, regionally important remains. These remains are generally well preserved and are likely to represent part of a medieval settlement that has been identified through excavation immediately to the north of the development area. A further concentration of activity was recorded in the central part of the development area, centred on Trenches 5 and 6. It consisted of possible enclosure and boundary ditches and pits that contained material of Roman date.

The remainder of the trenches contained linear features which form part of a medieval or post-medieval field system. No significant archaeological remains were found in the southern area (represented by Trenches 7, 8 and 9) and the northern central area (represented by Trenches 2, 3 and 4) of the development area.



1. INTRODUCTION

1.1 *Project Background*

The Bedfordshire and River Ivel Drainage Board (IDB) intend to create a flood attenuation scheme to the north of Great Barford. Bedfordshire County Council's Archaeological Officer (AO) advised that the area being considered for the development was archaeologically sensitive. As a result the AO issued a brief (BCC 2006) outlining a three-staged approach to the programme of archaeological work:

- Stage I – archaeological field evaluation comprising trial trenching.
- Stage II – appraisal of the results of the archaeological field evaluation.
- Stage III – implementation of an agreed programme of archaeological investigation and recording (if required, following completion of Stage II).

The AO also issued a brief for the Stage I archaeological field evaluation (BCC 2006). Albion Archaeology was commissioned by the IDB to undertake the evaluation of the site. A Project Design was written on the basis of the brief (Albion Archaeology 2006). This document represents the report on the results.

1.2 *Site Location and Description*

The flood attenuation scheme is located approximately 800m north of Great Barford. It comprises an area of c.6.5ha and is centred at National Grid Reference (NGR) TL 12538 53338. It lies at c.40m OD. The evaluation focused on the part of the scheme that is located to the west of the watercourse and measures c.3.5ha in extent.

At the time of fieldwork the area consisted of arable fields. The calcareous gley soils of the area are derived from the underlying chalky boulder clay.

1.3 *Archaeological Background*

An assessment of the HER and recent archaeological work indicates that archaeological remains exist in the immediate vicinity of the flood attenuation scheme. As a result, it was considered possible that remains dating to the prehistoric, Roman, and particularly the medieval period might be encountered.

Approximately 150m south-east of the proposed development undated sub-rectangular enclosures have been observed on aerial photographs (HER 16750).

Extensive activity dating from the Iron Age to Romano-British period was revealed on a site c.600m to the north-west during excavations in advance of the construction of the Great Barford bypass (OA 2006, Site 4). The activity consisted of several phases of enclosures with relatively few internal features, a small early Roman cremation cemetery and a small number of mid to late Roman inhumations.



A recent evaluation (NA 2004) and subsequent excavation (OA 2006, Site 3) investigated land c.100m north of the development area in advance of the construction of the Great Barford bypass. No archaeological remains were observed during the evaluation on the east bank of the stream, although colluvial deposits were observed, up to 1.20m thick.

On the western side of the stream the evaluation and subsequent excavation revealed a small 10th – 13th century settlement. The settlement was defined by a post-built structure comprised of three small rooms, which were possibly utilised for seasonal industrial activities, and domestic refuse pits. A sequence of deeply cut drainage ditches was located to the west of the settlement. The settlement was probably abandoned by the end of the 12th century, with attempts to drain the land being stopped by the beginning of the 13th century. These remains are likely to be associated with the deserted medieval settlement of East End (HER 9916).

Albion Archaeology (Albion 2005) undertook an evaluation in connection with proposals for the construction of three flood embankments (FE 1, 2 and 3) as part of a previous stage of the flood attenuation scheme to the north and west of Green End, Great Barford. No archaeological remains were found in the trenches of FE2 located immediately south of the present evaluation area. Remains dating to the middle Saxon period in the form of two pits, two postholes and a ditch terminal were revealed in one trench at FE3 located south of FE2. Trench 5 at FE1 situated to the west of Green End contained a medieval furrow.

1.4 Methodologies

The Project Design (Albion Archaeology 2006) outlined works that utilised ground intrusive evaluation techniques in the form of trial trenching.

1.5 Professional Standards

Throughout the project the standards set out in the following documents were adhered to:

- Albion Archaeology's *Procedures Manual: Volume 1 Fieldwork* (2nd ed, 2001).
- IFA's *Codes of Conduct and Standards and Guidance for Archaeological Field Evaluation*;
- IFA *Guidelines for Finds Work* (2000)
- English Heritage's *The Management of Archaeological Projects* (1991)
- Bedford Museum (1998) *Preparing Archaeological Archives for Deposition in Registered Museums in Bedfordshire*



2. AIMS & METHOD STATEMENT

2.1 Trial trenching

The trench plan (Figure 1) was discussed with, and approved by, the AO prior to any trial trenching taking place. Eight 50m trenches and a ninth 20m trench were excavated. Contingency trenching was used to extend Trenches 1 and 5. This led to a better understanding of the remains in these areas. The trial trenching took place between 13th March and 24th March 2006.

The evaluation was designed to:

- determine the location, extent, nature and date of any archaeological features or deposits that were present.
- obtain information on the integrity and state of preservation of any archaeological features or deposits that were present.

The location of all trenches was marked out on the ground in advance of machine excavation using differential GPS survey equipment. Topsoil and modern overburden were mechanically removed by a JCB, fitted with a toothless ditching bucket and operating under close archaeological supervision. These deposits were removed down to the top of the archaeological deposits, or undisturbed geological deposits, whichever was encountered first. The spoil heaps were scanned for artefacts.

The bases and sections of all trenches were cleaned by hand. The deposits and any potential archaeological features were noted, cleaned, excavated by hand and recorded using Albion Archaeology's *pro forma* sheets. The trenches were subsequently drawn, and photographed as appropriate. All deposits were recorded using a unique recording number sequence commencing at 100 for Trench 1, 200 for Trench 2 etc.

The trenches were inspected on two occasions by the AO prior to being backfilled.



3. RESULTS

3.1 Introduction

Eight trenches contained archaeological features. Only Trench 8 in the south-western part of the development area was blank. The features were spread evenly throughout the trenches with a particular concentration of archaeological activity in Trench 1 in the north (Figure 3) and Trenches 5 and 6 in the centre of the development area (Figure 4).

The results of the evaluation are summarised below in chronological order and by feature type. Further detailed descriptions can be found in Appendix 1. Artefacts are discussed in detail in Appendix 2.

3.2 Overburden and undisturbed geological deposits

The overburden comprised a layer of topsoil, on average 0.40m thick. It overlay a layer of subsoil of varying thickness. The subsoil was 0.23m thick in the north of the development area in Trenches 1 and 2 and became thicker towards the southern part of the site. It was thickest in Trench 3 (0.65m) and Trench 9 (0.90m).

The undisturbed geological deposits mainly consisted of mid to light orange brown sandy clay. Within Trench 1 a mid bluish grey clay was also present in the eastern end of the trench.

3.3 Prehistoric

Three ditches dating to the prehistoric period were recorded in Trenches 1 and 2 (Figure 3).

Trench 1 contained the terminus of a small ditch or gully [130] on a N-S alignment. It contained several fragments of undiagnostic Iron Age pottery. Terminus [130] truncated the terminus of an earlier ditch [104]. On the basis of its similarities in morphology and alignment, it is thought to be contemporary with ditch [130].

Trench 2 contained two ditches on a NW-SE alignment that may have served as boundary ditches. The earlier ditch [206] may have been re-cut by the later ditch [203] on the same alignment. Both ditches contained several, very small fragments of late Iron Age pottery (Appendix 2).

All fragments of pottery are highly abraded (Appendix 2, Section 6.2.2) and could represent residual finds in later features. However, ditches [203] and [206] are on a different alignment to the predominant medieval/post-medieval field system, and could be part of an earlier field system.

3.4 Roman

Roman material was concentrated in Trenches 5 and 6, with a single ditch containing a fragment of Roman pottery situated in the eastern end of Trench 4.



The focus of activity is centred on Trench 6 which contains a variety of features in the form of pits, ditches and layers (Figure 4).

3.4.1 Ditches

The southern part of Trench 5 contained a boundary ditch [506] on a NW-SE alignment that contained a very small fragment of Roman pottery. The trench also contained the corner of a possible enclosure in the form of a smaller ditch or gully [503] (Figure 5, Section 4) that turned sharply from a NE-SW alignment to a NW-SE alignment within the trench. It contained several fragments of Roman pottery (Appendix 2).

Trench 6 contained several ditches on a N-S and NNE-SSW alignment. Ditches [603] and [615] were situated *c.* 6.80m apart and both contained a relatively large number of small and highly abraded fragments of Roman pottery. The pottery assemblage included small fragments of imported Samian and greyware (see Appendix 2). Ditch [603] also contained a small number of animal bone and fragments of fired clay. Ditch [615] contained a small number of burnt stones.

Four further ditches ([607], [612], [619] and [623]) were situated within Trench 6. Ditch [623] is on a N-S alignment, and [607], [612] and [619] are on a NW-SE alignment. Ditches [612] and [623] contained small fragments of Roman material. [607] was truncated by [603] and was most likely to be Roman or earlier in date.

3.4.2 Pits

A small pit [625] in the western end of Trench 6 contained several large fragments of Roman shell-tempered pottery. A large feature [628] situated in the centre of Trench 6 also contained several fragments of Roman pottery. It may represent the infilled remains of either a quarry pit or well.

3.4.3 Layers

A *c.* 0.15m thick layer (627) of firm silty clay, containing frequent small stones, was situated in the western part of Trench 6. It contained several fragments of Roman pottery and a piece of roof tile (Appendix 2, Section 6.2.3). The layer may represent a surface associated with the pits [625] and [628] (Figure 4). However, its precise function is unclear.

3.5 Medieval

All of the medieval remains recorded during the evaluation were located in Trench 1 in the northern part of the site. They comprise several pits and ditches on similar alignments and a large feature which may be a quarry pit or pond (Figure 3). The ceramic material recovered from these features ranges in date from the Saxo-Norman to the high medieval period (Appendix 2, Section 6.2.2).

3.5.1 Layer

Layer (146) is stratigraphically earlier than the other remains in Trench 1. Its function is unclear. However, it is related to the pitting activity described below (Section 3.5.3).



3.5.2 Ditches

Trench 1 (Figure 3) contained several ditches on the same NNE-SSW alignment. One ditch, excavated in segments [135] and [147], contained several small fragments of Saxo-Norman pottery as well as fragments of later 12th to 13th century shell tempered pottery (Appendix 2). It was cut by another ditch [149] on the same alignment and with similar dimensions. The feature contained no dating material. It may represent a re-cut of the earlier ditch (Figure 5, Section 1).

Ditch [107] (Figure 5, Section 2) and ditch [121] were on the same NNE-SSW alignment. Ditch [107] contained several fragments of fired clay. A fragment of Saxo-Norman pottery was retrieved from a depression caused by root disturbance [126] in the base of ditch [121] from which it most likely originated.

The ditches are fairly evenly spaced, 5m and 6m apart. They most likely represent part of a medieval enclosure system or boundaries.

3.5.3 Pits

A very large pit [137]/ [152] was situated in the western end of Trench 1. It measured 11m from east to west. It extended beyond the limit of excavation, so that its full shape and dimensions could not be recorded. Several fragments of high medieval pottery and post-medieval roof tile were recovered. It is most likely that the pit represents a large quarry pit or well.

Several pits [142], [144], [109], [112] (Figure 5, Section 2), [115], [119], [155] of uncertain function and root disturbance [117] were located in Trench 1. Pit [119] was substantially larger than the other pits. No dating material was retrieved. However, on the basis that they truncated ditch [107] and pit [137]/ [152], it is likely that they are medieval or post-medieval in date.

3.6 *Post-medieval*

The remains of a medieval or post-medieval field system were evident in most of the trenches within the development area (Figure 2).

3.6.1 Furrows

Trenches 2, 3, 5, 7 and 9 contained a series of contemporary furrows, on the same NE-SW alignment and displaying similar dimensions. It is very likely that they form part of either a medieval or post-medieval field system.

Two furrows [140] and [133] were situated on a N-S alignment within Trench 1. Furrow [140] truncated the medieval pits [142], [144] and [137]/ [152] and is therefore most likely post-medieval in date. Because the ditches share an alignment, they are considered to be contemporary and part of a post-medieval field system. It may be significant that the ditches are on a different alignment to the NE-SW orientation of the furrows in Trenches 2, 3, 7, and 9 (Figure 2).

3.6.2 Ditches

Ditch [703] in the northern end of Trench 7 was considerably deeper and wider than the furrows. It contained a fragment of post-medieval roof tile and a worked flint flake. Trench 7 also contained the rounded terminus of a gully [707]. On the



basis of their alignment it is likely that both features are part of the same field system as the furrows with ditch [703] representing a boundary ditch.

Ditches [403] and [409] in Trench 4 are on the same NE-SW alignment. Ditch [403] contained two small fragments of Roman pottery, which are most likely to be residual. Ditch [409] contained no dating evidence. Trench 9 contained the rounded terminus [907] of a small ditch on a NE-SW alignment. The profile of these ditches is slightly deeper and more concave than that of most furrows. However, on the basis of their alignment it is very likely that they form part of the same field system.

3.6.3 Land drains

A significant number of land drains were encountered. The drains were situated at varying depths below the topsoil. Most of the land drains were on the same NE-SW alignment as the post-medieval field system discussed above. Some drains were also recorded on a NW-SE orientation.

3.7 Undated

3.7.1 Ditch

The rounded terminus of a possible small gully [405] on a N-S alignment was situated in Trench 4.

3.7.2 Pits and postholes

Trench 3 contained an isolated posthole [309] measuring 0.16 x 0.20m wide and 0.18m deep with vertical sides. Trench 7 contained a small sub-oval pit [709] with an irregular concave profile.



4. SYNTHESIS OF RESULTS

4.1 Discussion

The evaluation has revealed two clearly defined areas of archaeological remains, centred on Trench 1 in the north and Trenches 5 and 6 in the centre of the development area. These are discussed chronologically below.

4.1.1 Prehistoric

Three trenches containing early and late Iron Age pottery were excavated in the northern part of the development area. It is possible they form part of a late prehistoric field system. However, as the nature of the ceramic fragments was highly abraded it is very likely they are residual and the ditches are part of a later, possibly Roman, field system.

4.1.2 Roman

Trenches 5 and 6 revealed features dating to the Roman period. These are the remains of activity peripheral to a nearby Roman settlement. Excavations c.600m to the NW revealed evidence for an intensive late Iron Age/early Roman enclosure system (OA 2005, Site 4).

Trench 5 contained the remains of a possible rectangular enclosure and boundary ditch. Trench 6 contained two ditches on a NNE-SSW alignment, which may be part of an enclosure. It also contained a large pit, possibly used for quarrying or drainage, and a smaller pit containing several large sherds of Roman pottery. A layer of dense small stones, which may represent a surface, could be associated with the pits.

Roman pottery was extensively abraded, suggesting that it had travelled a considerable distance or was moved around through ploughing before being deposited within the features. This suggests that there was no concentrated Roman settlement within the development area but that the features represent remains of peripheral activity.

4.1.3 Medieval

The northern part of the development area, centred on Trench 1, contained features of the medieval period, most likely part of the medieval settlement of East End. Excavations c.100m to the north revealed a small 10th-13th century settlement comprised of a rectangular enclosure with internal structural features and evidence of industrial activity. The excavations also revealed numerous pits, most likely for clay extraction, and a number of drainage ditches and ponds (OA 2005, Site 3).

The evidence for medieval remains within Trench 1 gives an indication of the extent of the settlement of East End at its southern edge. The majority of ditches are on a NNE-SSW alignment and could represent boundary ditches or the sides of a larger enclosure. A number of undated pits were excavated within the boundaries formed by the ditches and may be contemporary. It is possible that they were dug for the same purpose of clay extraction as the pits on the settlement



to the north. Similarly, the large irregular pit [137]/ [152] in the western end of Trench 1 probably represents a pond or drainage feature.

The pottery retrieved from the features ranges in date from the Saxo-Norman to the high medieval period and also includes further remains of domestic activity in the form of animal bones and fired clay. The quantity of material is small in scale and the pottery fragments are highly abraded, suggesting the material travelled from the core of the settlement further to the north.

4.1.4 Post-medieval

The majority of trenches contained the remains of a post-medieval field system in the form of boundary ditches and furrows. The features are on the same NE-SW alignment as the boundaries of the present day field. It is likely that the field was created during the enclosure of the parish in 1820.

The two furrows on a N-S alignment in Trench 1 could be part of a field system that was situated to the north of the development area.

4.2 Summary

The evaluation has demonstrated that two areas of concentrated archaeological remains survive within the development area. The northern part of the development area, centred on Trench 1, contained features of the medieval period, most likely part of the medieval settlement of East End. The recorded remains complement the results of the excavations undertaken at Site 3 on the Great Barford bypass and indicate the southern extent of the medieval settlement (OA 2005). They can be considered of regional significance.

Trenches 5 and 6 revealed features dating to the Roman period. These are likely to have been peripheral to a nearby settlement. They augment the picture of the general distribution and nature of Roman activity within this part of Bedfordshire and can be considered of local or regional significance.

Trenches 7 and 9 in the southern part of the development area and Trenches 2 and 3 in the northern part of the site contained remains of a post-medieval field system, which can be considered of local significance.

Trench 8 in the south-western corner of the site contained no archaeological features.



5. BIBLIOGRAPHY

- Albion Archaeology 2001 *Procedures Manual Volume 1 Fieldwork*, 2nd ed.
- Albion Archaeology 2005. *Great Barford Flood Attenuation Scheme Bedfordshire. Archaeological Field Evaluation*. Unpublished client report 5/17
- Albion Archaeology 2006. *Great Barford Flood Attenuation Scheme Bedfordshire. Project Design for Archaeological Field Evaluation*. Report 6/31.
- Bedfordshire County Council 2006. *Brief for the Archaeological Field Evaluation in Advance of the Construction of a Flood Attenuation Scheme at Great Barford, Bedfordshire*.
- Bedford Museum 1998. *Preparing Archaeological Archives for Deposition in Registered Museums in Bedfordshire*.
- EH 1991. *The Management of Archaeological Projects*, 2nd edition. English Heritage (London).
- IFA 1999a. Institute of Field Archaeologists' *Code of Conduct*.
- IFA 1999b. Institute of Field Archaeologists' *Standard & Guidance documents (Desk-Based Assessments, Watching Briefs, Evaluations, Excavations, Investigation and Recording of Standing Buildings)*.
- Northamptonshire Archaeology 2004. *Archaeological Field Evaluation of the line of the Great Barford Bypass, Bedfordshire*. Unpublished client report.
- Oxford Archaeology 2005. A421 *Great Barford Bypass Bedfordshire. Post-Excavation Assessment and Updated Project Design*. Unpublished client report.



6. APPENDICES

6.1 Appendix 1 – Trench Summaries


Trench: 1
Max Dimensions: Length: 50.00 m. Width: 1.60 m. Depth to Archaeology Min: 0.34 m. Max: 0.51 m.

OS Co-ordinates: Ref. 1: TL1253653306 Ref. 2: TL1248653307

Reason: Assess Archaeological Potential of Site: Arrayed Distribution

Context:	Type:	Description:	Excavated:	Finds Present:
100	Topsoil	Friable dark grey brown clay silt moderate small stones	<input type="checkbox"/>	<input type="checkbox"/>
101	Subsoil	Plastic mid yellow brown silty clay occasional medium stones	<input type="checkbox"/>	<input type="checkbox"/>
102	Natural	Firm light yellow brown silty clay occasional small-medium stones Towards eastern end of trench becomes blue grey clay.	<input type="checkbox"/>	<input type="checkbox"/>
104	Ditch	Linear N-S profile: concave base: concave dimensions: min length 0.75m, max breadth 1.m, max depth 0.36m Western side slightly concave, eastern side stepped. Profile is assymetric and U-shaped.	<input checked="" type="checkbox"/>	<input type="checkbox"/>
105	Fill	Firm mid yellow brown silty clay occasional small stones Natural silting.	<input checked="" type="checkbox"/>	<input type="checkbox"/>
106	Fill	Firm light grey brown silty clay occasional flecks charcoal, occasional medium stones Natural silting.	<input checked="" type="checkbox"/>	<input type="checkbox"/>
107	Ditch	Linear NNW-SSE profile: stepped base: flat dimensions: min length 1.5m, max breadth 2.2m, max depth 0.46m Full profile could not be seen due to truncation.	<input checked="" type="checkbox"/>	<input type="checkbox"/>
108	Fill	Firm mid yellow brown silty clay occasional flecks charcoal, occasional small stones	<input checked="" type="checkbox"/>	<input checked="" type="checkbox"/>
114	Fill	Firm mid grey brown silty clay frequent flecks charcoal, occasional small stones Natural silting.	<input checked="" type="checkbox"/>	<input type="checkbox"/>
109	Pit	Oval profile: concave base: concave dimensions: max length 1.05m, min breadth 0.25m, max depth 0.56m	<input checked="" type="checkbox"/>	<input type="checkbox"/>
110	Fill	Firm mid grey brown clay moderate flecks charcoal Lower fill.	<input checked="" type="checkbox"/>	<input type="checkbox"/>
111	Fill	Firm mid yellow brown silty clay frequent small charcoal Upper fill.	<input checked="" type="checkbox"/>	<input type="checkbox"/>
112	Pit	Oval profile: irregular base: uneven dimensions: max length 1.2m, min breadth 0.2m, max depth 0.46m Full shape not seen. Assymetrical U-shaped profile. Eastern side steeper than western side.	<input checked="" type="checkbox"/>	<input type="checkbox"/>
113	Fill	Firm mid yellow brown silty clay frequent flecks charcoal Natural silting.	<input checked="" type="checkbox"/>	<input type="checkbox"/>
115	Pit	Oval E-W profile: convex base: concave dimensions: max length 1.22m, max breadth 0.6m, max depth 0.38m Assymetric U-shaped profile, western side has a shallower slope than the eastern side.	<input checked="" type="checkbox"/>	<input type="checkbox"/>
116	Fill	Firm mid grey brown silty clay frequent flecks charcoal, occasional small stones Natural silting.	<input checked="" type="checkbox"/>	<input type="checkbox"/>
117	Treethrow	Sub-oval profile: irregular base: uneven dimensions: min length 0.8m, max breadth 0.55m, max depth 0.3m Truncated in western side by feature [115], eastern side slopes at c. 45 degrees. Rooting.	<input checked="" type="checkbox"/>	<input type="checkbox"/>
118	Fill	Firm mid yellow brown silty clay Natural silting.	<input checked="" type="checkbox"/>	<input type="checkbox"/>
119	Pit	Sub-circular profile: concave base: flat dimensions: max length 2.65m, min breadth 1.15m, max diameter 0.75m Assymetric U-shape. Western edge c. 45 degrees, eastern edge steeper.	<input checked="" type="checkbox"/>	<input type="checkbox"/>
120	Fill	Loose mid grey brown silty clay occasional flecks charcoal, occasional large stones Very frequent roots and rotting making soil compaction loose.	<input checked="" type="checkbox"/>	<input type="checkbox"/>
121	Ditch	Linear NE-SW profile: concave base: concave dimensions: max breadth 1.82m, max depth 0.38m, min length 2.m	<input checked="" type="checkbox"/>	<input type="checkbox"/>
122	Fill	Firm mid yellow brown sandy clay moderate flecks charcoal, moderate flecks manganese staining, occasional small stones	<input checked="" type="checkbox"/>	<input type="checkbox"/>
123	Fill	Firm mid brown grey sandy clay occasional flecks charcoal, occasional small-medium stones Natural silting.	<input checked="" type="checkbox"/>	<input type="checkbox"/>
124	Treethrow	Circular profile: near vertical base: concave dimensions: max length 0.19m, max breadth 0.09m, max depth 0.12m Root disturbance.	<input checked="" type="checkbox"/>	<input type="checkbox"/>

**Trench: 1****Max Dimensions:** Length: 50.00 m. Width: 1.60 m. Depth to Archaeology Min: 0.34 m. Max: 0.51 m.**OS Co-ordinates:** Ref. 1: TL1253653306 Ref. 2: TL1248653307**Reason:** Assess Archaeological Potential of Site: Arrayed Distribution

Context:	Type:	Description:	Excavated:	Finds Present:
125	Fill	Plastic light grey brown silty sand frequent flecks charcoal Natural silting.	<input checked="" type="checkbox"/>	<input type="checkbox"/>
126	Treethrow	Sub-circular profile: concave base: concave dimensions: max length 0.21m, max breadth 0.3m, max depth 0.28m U-shaped profile. NW facing side is convex. Root disturbance.	<input checked="" type="checkbox"/>	<input type="checkbox"/>
127	Fill	Firm mid grey brown silty clay frequent flecks charcoal, moderate small sand	<input checked="" type="checkbox"/>	<input checked="" type="checkbox"/>
128	Treethrow	Linear NW-SE profile: irregular base: uneven dimensions: min length 1.5m, max breadth 4.4m, max depth 0.2m Root disturbance.	<input checked="" type="checkbox"/>	<input type="checkbox"/>
129	Fill	Friable dark red grey silt Frequent roots within fill.	<input checked="" type="checkbox"/>	<input checked="" type="checkbox"/>
130	Ditch	Linear NW-SE profile: concave base: flat dimensions: min length 1.3m, max breadth 1.1m, max depth 0.38m	<input checked="" type="checkbox"/>	<input type="checkbox"/>
131	Fill	Firm dark grey brown silty clay frequent flecks charcoal Fill contains occasional fragments of burnt clay.	<input checked="" type="checkbox"/>	<input checked="" type="checkbox"/>
132	Fill	Friable mid grey brown silty clay occasional small stones Fill has diffuse boundary with fill (131) above.	<input checked="" type="checkbox"/>	<input checked="" type="checkbox"/>
133	Furrow	Linear N-S dimensions: min length 1.5m, max breadth 2.5m Possible boundary ditch.	<input type="checkbox"/>	<input type="checkbox"/>
134	Fill	Friable mid grey brown silty clay occasional small stones Natural silting.	<input type="checkbox"/>	<input type="checkbox"/>
135	Ditch	Linear NE-SW profile: concave dimensions: min length 5m, min breadth 3m, min depth 0.49m Full extent and profile of feature not seen.	<input checked="" type="checkbox"/>	<input type="checkbox"/>
136	Fill	Firm mid orange brown silty clay occasional small-large stones Fill also contains occasional clay patches.	<input checked="" type="checkbox"/>	<input checked="" type="checkbox"/>
137	Pit	Irregular profile: concave dimensions: min length 11m, min breadth 2.5m, min depth 0.5m Full extent of feature not seen.	<input checked="" type="checkbox"/>	<input type="checkbox"/>
138	Fill	Friable dark grey brown silt occasional small stones Equivalent to (154).	<input checked="" type="checkbox"/>	<input checked="" type="checkbox"/>
139	Fill	Firm mid orange brown silty clay moderate flecks chalk, occasional flecks charcoal Equivalent to (153).	<input checked="" type="checkbox"/>	<input checked="" type="checkbox"/>
140	Furrow	Linear N-S profile: concave base: flat dimensions: min length 4m, max breadth 1.55m, max depth 0.26m	<input checked="" type="checkbox"/>	<input type="checkbox"/>
141	Fill	Friable mid orange brown silty clay occasional small stones	<input checked="" type="checkbox"/>	<input type="checkbox"/>
142	Pit	Oval profile: concave base: uneven dimensions: min length 0.75m, max breadth 0.45m, max depth 0.36m Full extent of feature not seen. Either a pit or root disturbance.	<input checked="" type="checkbox"/>	<input type="checkbox"/>
143	Fill	Firm dark orange grey clay Darker than fill (145), not distinguishable from (138).	<input checked="" type="checkbox"/>	<input checked="" type="checkbox"/>
144	Pit	Oval profile: concave base: concave dimensions: min length 0.4m, min breadth 0.35m, max depth 0.26m Full extent of feature not seen. Possible pit.	<input checked="" type="checkbox"/>	<input type="checkbox"/>
145	Fill	Firm dark orange brown clay Lighter than (143), undistinguishable from (138) in plan.	<input checked="" type="checkbox"/>	<input checked="" type="checkbox"/>
146	Layer	Firm dark grey brown silty clay occasional medium ceramic building material Spread of material at western end of trench. Possibly related to feature [137]. Mixture of blue/grey clay and dark grey/brown clay.	<input type="checkbox"/>	<input checked="" type="checkbox"/>
147	Ditch	Linear NE-SW dimensions: min length 5m, min breadth 3m, min depth 0.35m Full profile not seen in section. Boundary ditch.	<input checked="" type="checkbox"/>	<input type="checkbox"/>
148	Fill	Friable mid orange brown silty clay occasional small-large stones	<input checked="" type="checkbox"/>	<input checked="" type="checkbox"/>
149	Ditch	Linear NE-SW profile: concave dimensions: min length 3m, max breadth 2.5m, min depth 0.34m Full extent of feature not seen. May be a re-cut of ditch [147].	<input checked="" type="checkbox"/>	<input type="checkbox"/>



Trench: 1

Max Dimensions: Length: 50.00 m. Width: 1.60 m. Depth to Archaeology Min: 0.34 m. Max: 0.51 m.

OS Co-ordinates: Ref. 1: TL1253653306 Ref. 2: TL1248653307

Reason: Assess Archaeological Potential of Site: Arrayed Distribution

Context:	Type:	Description:	Excavated:	Finds Present:
150	Fill	Firm light grey brown silty clay moderate small-medium stones, occasional large stones	<input checked="" type="checkbox"/>	<input type="checkbox"/>
151	Fill	Firm light grey brown silty clay	<input checked="" type="checkbox"/>	<input type="checkbox"/>
152	Pit	Irregular profile: concave dimensions: min length 11.m, min breadth 2.5m, min depth 0.35m Full extent of feature not seen.	<input checked="" type="checkbox"/>	<input type="checkbox"/>
153	Fill	Firm mid orange brown silty clay moderate small chalk, occasional flecks charcoal	<input checked="" type="checkbox"/>	<input type="checkbox"/>
154	Fill	Friable dark grey brown silt occasional small stones Fill has a humic consistency.	<input checked="" type="checkbox"/>	<input checked="" type="checkbox"/>
155	Treethrow	Oval profile: near vertical base: flat dimensions: min length 0.3m, min breadth 0.45m, max depth 0.25m Full extent of feature not seen.	<input checked="" type="checkbox"/>	<input type="checkbox"/>
156	Fill	Firm mid orange brown silty clay Very similar to subsoil.	<input checked="" type="checkbox"/>	<input type="checkbox"/>



Trench: 2

Max Dimensions: Length: 50.00 m. Width: 1.60 m. Depth to Archaeology Min: 0.47 m. Max: 0.68 m.

OS Co-ordinates: Ref. 1: TL1253853279 Ref. 2: TL1253753229

Reason: Assess Archaeological Potential of Site: Arrayed Distribution

Context:	Type:	Description:	Excavated:	Finds Present:
200	Topsoil	Friable mid grey brown clay occasional small-medium stones Extensive root disturbance.	<input type="checkbox"/>	<input type="checkbox"/>
201	Subsoil	Firm mid orange grey silty clay	<input type="checkbox"/>	<input type="checkbox"/>
202	Natural	Firm mid orange sandy clay moderate flecks manganese staining, occasional small stones	<input type="checkbox"/>	<input type="checkbox"/>
203	Ditch	Linear NW-SE profile: concave base: concave dimensions: min length 2.75m, max breadth 1.05m, max depth 0.6m Northern edge slightly stepped.	<input checked="" type="checkbox"/>	<input type="checkbox"/>
204	Fill	Firm light orange brown silty clay moderate flecks manganese staining, occasional small stones	<input checked="" type="checkbox"/>	<input checked="" type="checkbox"/>
205	Fill	Firm light brown orange silty clay occasional medium stones	<input checked="" type="checkbox"/>	<input type="checkbox"/>
206	Ditch	Linear NW-SE profile: concave base: flat dimensions: min length 2.75m, min breadth 1.35m, max depth 0.37m	<input checked="" type="checkbox"/>	<input type="checkbox"/>
207	Fill	Firm light grey brown silty clay moderate flecks charcoal Occasional small fragments of burnt clay throughout fill.	<input checked="" type="checkbox"/>	<input checked="" type="checkbox"/>
208	Fill	Friable mid orange brown sandy clay Looks like dirty natural.	<input checked="" type="checkbox"/>	<input type="checkbox"/>
209	Fill	Friable mid orange brown sandy clay Same as (208).	<input checked="" type="checkbox"/>	<input type="checkbox"/>
210	Furrow	Linear NE-SW profile: concave base: flat dimensions: min length 1.65m, max breadth 0.75m, max depth 0.08m	<input checked="" type="checkbox"/>	<input type="checkbox"/>
211	Fill	Friable light brown orange sandy clay	<input checked="" type="checkbox"/>	<input type="checkbox"/>
212	Furrow	Linear NE-SW profile: concave base: concave dimensions: min length 1.6m, max breadth 2.6m, max depth 0.42m	<input checked="" type="checkbox"/>	<input type="checkbox"/>
213	Fill	Firm light orange grey silty clay occasional flecks manganese staining, occasional medium stones	<input checked="" type="checkbox"/>	<input type="checkbox"/>
214	Fill	Compact light yellow grey silt occasional small stones	<input checked="" type="checkbox"/>	<input type="checkbox"/>
215	Furrow	Linear NE-SW profile: concave base: concave dimensions: min length 1.75m, max breadth 1.15m, max depth 0.18m	<input checked="" type="checkbox"/>	<input type="checkbox"/>
216	Fill	Friable light brown orange sandy clay occasional small stones	<input checked="" type="checkbox"/>	<input type="checkbox"/>



Trench: 3

Max Dimensions: Length: 50.00 m. Width: 1.60 m. Depth to Archaeology Min: 0.78 m. Max: 0.84 m.

OS Co-ordinates: Ref. 1: TL1258753248 Ref. 2: TL1258753198

Reason: Assess Archaeological Potential of Site: Arrayed Distribution

Context:	Type:	Description:	Excavated:	Finds Present:
300	Topsoil	Friable dark brown grey clay silt occasional flecks charcoal, occasional small-medium stones	<input type="checkbox"/>	<input type="checkbox"/>
301	Subsoil	Firm mid yellow brown clay silt occasional flecks charcoal, occasional small stones	<input type="checkbox"/>	<input type="checkbox"/>
302	Natural	Firm light orange brown silty clay frequent flecks manganese staining, occasional small stones	<input type="checkbox"/>	<input type="checkbox"/>
303	Furrow	Linear ENE-WSW profile: concave base: flat dimensions: min length 1.5m, max breadth 0.97m, max depth 0.1m	<input checked="" type="checkbox"/>	<input type="checkbox"/>
304	Fill	Firm mid orange brown clay silt occasional flecks charcoal	<input checked="" type="checkbox"/>	<input type="checkbox"/>
305	Furrow	Linear ENE-WSW profile: concave base: concave dimensions: min length 1.5m, max breadth 1.75m, max depth 0.12m	<input checked="" type="checkbox"/>	<input type="checkbox"/>
306	Fill	Firm mid orange brown silty clay occasional flecks charcoal	<input checked="" type="checkbox"/>	<input type="checkbox"/>
307	Land drain	Linear NW-SE profile: vertical dimensions: min length 1.8m, max breadth 0.72m, max depth 0.34m	<input checked="" type="checkbox"/>	<input type="checkbox"/>
308	Fill	Firm silty clay Mixture of subsoil and undisturbed geological deposits	<input checked="" type="checkbox"/>	<input checked="" type="checkbox"/>
309	Posthole	Sub-circular profile: near vertical base: concave dimensions: max length 0.2m, max breadth 0.16m, max depth 0.18m	<input checked="" type="checkbox"/>	<input type="checkbox"/>
310	Fill	Firm mid grey brown silty clay frequent flecks charcoal	<input checked="" type="checkbox"/>	<input type="checkbox"/>



Trench: 4

Max Dimensions: Length: 50.00 m. Width: 1.60 m. Depth to Archaeology Min: 0.64 m. Max: 0.68 m.

OS Co-ordinates: Ref. 1: TL1260453173 Ref. 2: TL1255453173

Reason: Assess Archaeological Potential of Site: Arrayed Distribution

Context:	Type:	Description:	Excavated:	Finds Present:
400	Topsoil	Friable mid grey brown clay occasional small stones	<input type="checkbox"/>	<input type="checkbox"/>
401	Subsoil	Firm mid orange brown silty clay	<input type="checkbox"/>	<input type="checkbox"/>
402	Natural	Firm mid orange sandy clay occasional flecks manganese staining, occasional small stones	<input type="checkbox"/>	<input type="checkbox"/>
403	Ditch	Linear NE-SW profile: concave base: flat dimensions: min length 2.75m, max breadth 0.75m, max depth 0.27m	<input checked="" type="checkbox"/>	<input type="checkbox"/>
404	Fill	Firm light blue orange silty clay	<input checked="" type="checkbox"/>	<input checked="" type="checkbox"/>
405	Ditch	Linear N-S profile: concave base: concave dimensions: min length 1.1m, max breadth 0.55m, max depth 0.16m Feature has rounded terminus in north. Very shallow feature but could be a possible ditch terminus.	<input checked="" type="checkbox"/>	<input type="checkbox"/>
406	Fill	Firm light orange grey silty clay occasional flecks charcoal Occasional flecks of red burnt clay within fill.	<input checked="" type="checkbox"/>	<input type="checkbox"/>
407	Land drain	Linear NE-SW profile: near vertical base: flat dimensions: min length 3m, max breadth 0.3m, max depth 0.26m	<input checked="" type="checkbox"/>	<input type="checkbox"/>
408	Fill	Friable mid orange grey sandy silt occasional medium stones	<input checked="" type="checkbox"/>	<input type="checkbox"/>
409	Ditch	Linear NE-SW profile: concave base: concave dimensions: min length 2.5m, max breadth 0.7m, max depth 0.3m	<input checked="" type="checkbox"/>	<input type="checkbox"/>
410	Fill	Firm light orange brown silty clay occasional flecks charcoal Charcoal flecks concentrated in centre of fill.	<input checked="" type="checkbox"/>	<input type="checkbox"/>
411	Fill	Firm mid brown orange silty clay occasional flecks manganese staining, occasional small stones	<input checked="" type="checkbox"/>	<input type="checkbox"/>



Trench: 5

Max Dimensions: Length: 50.00 m. Width: 1.60 m. Depth to Archaeology Min: 0.43 m. Max: 0.83 m.

OS Co-ordinates: Ref. 1: TL1258053153 Ref. 2: TL1258253103

Reason: Assess Archaeological Potential of Site: Arrayed Distribution

Context:	Type:	Description:	Excavated:	Finds Present:
500	Topsoil	Firm dark grey brown clay occasional small stones	<input type="checkbox"/>	<input type="checkbox"/>
501	Subsoil	Firm mid orange sandy clay	<input type="checkbox"/>	<input type="checkbox"/>
502	Natural	Firm light brown grey silty clay moderate medium sand Contains lenses of orange sand.	<input type="checkbox"/>	<input type="checkbox"/>
503	Ditch	Linear NE-SW profile: concave base: flat dimensions: min length 3.m, max breadth 0.87m, max depth 0.57m Feature extents on a NE alignment and turns sharp corner to a NW alignment. Corner of a ditch or gully, possible enclosure.	<input checked="" type="checkbox"/>	<input type="checkbox"/>
504	Fill	Firm dark grey orange silty clay occasional flecks charcoal	<input checked="" type="checkbox"/>	<input checked="" type="checkbox"/>
505	Fill	Firm light grey orange silty clay occasional small stones	<input checked="" type="checkbox"/>	<input checked="" type="checkbox"/>
506	Ditch	Linear NE-SW profile: convex base: flat dimensions: max breadth 0.98m, max depth 0.12m, min length 6.75m	<input checked="" type="checkbox"/>	<input type="checkbox"/>
507	Fill	Firm light orange grey silty clay occasional small stones	<input checked="" type="checkbox"/>	<input checked="" type="checkbox"/>
508	Furrow	Linear NW-SE profile: concave base: flat dimensions: min length 5.25m, max breadth 1.m, max depth 0.29m	<input checked="" type="checkbox"/>	<input type="checkbox"/>
509	Fill	Firm light brown orange sandy clay	<input checked="" type="checkbox"/>	<input type="checkbox"/>



Trench: 6

Max Dimensions: Length: 50.00 m. Width: 1.60 m. Depth to Archaeology Min: 0.85 m. Max: 1.1 m.

OS Co-ordinates: Ref. 1: TL1265253142 Ref. 2: TL1260253144

Reason: Assess Archaeological Potential of Site: Arrayed Distribution

Context:	Type:	Description:	Excavated:	Finds Present:
600	Topsoil	Firm dark brown grey silty clay occasional small stones	<input type="checkbox"/>	<input type="checkbox"/>
601	Subsoil	Firm mid brown yellow silty clay occasional small stones	<input type="checkbox"/>	<input type="checkbox"/>
602	Natural	Compact mid brown orange sandy clay frequent small stones Mixture of bright mid brown orange sandy clay and mid orange brown silty sand.	<input type="checkbox"/>	<input type="checkbox"/>
603	Ditch	Linear NE-SW profile: concave dimensions: min length 2.m, max breadth 2.m, max depth 0.56m	<input checked="" type="checkbox"/>	<input type="checkbox"/>
604	Fill	Firm dark grey orange clay frequent small chalk Contains frequent small snails.	<input checked="" type="checkbox"/>	<input checked="" type="checkbox"/>
605	Land drain	Linear NE-SW profile: near vertical dimensions: min length 1.5m, max breadth 0.8m, min depth 0.8m Not fully excavated.	<input checked="" type="checkbox"/>	<input type="checkbox"/>
606	Fill	Firm mid yellow brown clay sand frequent small stones	<input checked="" type="checkbox"/>	<input type="checkbox"/>
607	Ditch	Linear NE-SW profile: concave base: flat dimensions: min length -1.07m, max breadth 1.75m, max depth 0.6m	<input checked="" type="checkbox"/>	<input type="checkbox"/>
608	Fill	Plastic dark grey orange clay occasional small stones	<input checked="" type="checkbox"/>	<input type="checkbox"/>
609	Fill	Firm mid brown orange silty clay occasional flecks charcoal, occasional small stones	<input checked="" type="checkbox"/>	<input type="checkbox"/>
610	Land drain	Linear NE-SW profile: near vertical base: concave dimensions: min length 2.3m, max breadth 0.23m, max depth 0.15m	<input checked="" type="checkbox"/>	<input type="checkbox"/>
611	Fill	Firm light brown yellow clay sand frequent small stones	<input checked="" type="checkbox"/>	<input type="checkbox"/>
612	Ditch	Linear NW-SE profile: concave dimensions: min length 1.8m, min breadth 1.8m, min depth 0.45m Not fully excavated.	<input checked="" type="checkbox"/>	<input type="checkbox"/>
613	Fill	Plastic dark grey orange clay frequent flecks chalk	<input checked="" type="checkbox"/>	<input type="checkbox"/>
614	Fill	Plastic mid brown yellow sandy clay frequent small stones	<input checked="" type="checkbox"/>	<input checked="" type="checkbox"/>
615	Ditch	Linear NE-SW profile: near vertical dimensions: min length 1.8m, max breadth 1.2m, min depth 0.45m Not fully excavated.	<input checked="" type="checkbox"/>	<input type="checkbox"/>
616	Fill	Firm light brown yellow silty clay occasional flecks charcoal, occasional small stones Contains a little lense of charcoal.	<input checked="" type="checkbox"/>	<input type="checkbox"/>
617	Fill	Compact mid grey silt frequent small chalk, frequent small stones Fill made up of small sub-angular pebbles of chalk.	<input checked="" type="checkbox"/>	<input type="checkbox"/>
618	Fill	Firm dark brown orange silty clay occasional small burnt stones, occasional small stones	<input checked="" type="checkbox"/>	<input checked="" type="checkbox"/>
619	Ditch	Linear NE-SW profile: near vertical base: concave dimensions: min length 0.5m, max breadth 0.3m, max depth 0.15m V-shaped profile.	<input checked="" type="checkbox"/>	<input type="checkbox"/>
620	Fill	Firm mid brown orange sandy clay occasional flecks charcoal, frequent small stones	<input checked="" type="checkbox"/>	<input type="checkbox"/>
621	Land drain	Linear NE-SW profile: near vertical dimensions: min length 3.m, max breadth 0.25m Not fully excavated. Cut at a very oblique angle so profile very hard to determine.	<input checked="" type="checkbox"/>	<input type="checkbox"/>
622	Fill	Firm mid brown orange silty clay occasional small stones	<input checked="" type="checkbox"/>	<input checked="" type="checkbox"/>
623	Ditch	Linear N-S profile: concave base: flat dimensions: min length 1.5m, max breadth 1.m, min depth 0.2m Possible a furrow or a ditch.	<input checked="" type="checkbox"/>	<input type="checkbox"/>
624	Fill	Friable mid brown grey silty clay occasional flecks charcoal, occasional small stones	<input checked="" type="checkbox"/>	<input checked="" type="checkbox"/>
625	Pit	Circular profile: concave base: concave dimensions: max length -0.7m, min breadth 0.3m, max depth 0.13m	<input checked="" type="checkbox"/>	<input type="checkbox"/>
626	Fill	Plastic dark brown grey sandy clay occasional flecks charcoal, occasional small stones	<input checked="" type="checkbox"/>	<input checked="" type="checkbox"/>



Trench: 6

Max Dimensions: Length: 50.00 m. Width: 1.60 m. Depth to Archaeology Min: 0.85 m. Max: 1.1 m.

OS Co-ordinates: Ref. 1: TL1265253142 Ref. 2: TL1260253144

Reason: Assess Archaeological Potential of Site: Arrayed Distribution

Context:	Type:	Description:	Excavated:	Finds Present:
627	Layer	Firm mid brown grey silty clay frequent small stones Layer containing pottery that is situated above natural. Function unclear. Contains very frequent small stones. Surface?	<input checked="" type="checkbox"/>	<input checked="" type="checkbox"/>
628	Pit	Linear NNE-SSW dimensions: min length 1.5m, min breadth 4.m	<input type="checkbox"/>	<input type="checkbox"/>
629	Fill	Firm dark brown grey silty clay frequent small-medium stones	<input type="checkbox"/>	<input checked="" type="checkbox"/>



Trench: 7

Max Dimensions: Length: 50.00 m. Width: 1.60 m. Depth to Archaeology Min: 0.49 m. Max: 0.59 m.

OS Co-ordinates: Ref. 1: TL1262753126 Ref. 2: TL1262653076

Reason: Assess Archaeological Potential of Site: Arrayed Distribution

Context:	Type:	Description:	Excavated:	Finds Present:
700	Topsoil	Plastic dark grey brown clay moderate small stones, occasional small stones	<input type="checkbox"/>	<input type="checkbox"/>
701	Subsoil	Plastic mid yellow brown silty clay occasional medium stones	<input type="checkbox"/>	<input type="checkbox"/>
702	Natural	Plastic light yellow brown silty clay	<input type="checkbox"/>	<input type="checkbox"/>
703	Ditch	Linear NE-SW profile: near vertical base: flat dimensions: min length 1.5m, max breadth 2.95m, max depth 0.48m	<input checked="" type="checkbox"/>	<input type="checkbox"/>
704	Fill	Firm mid yellow brown silty clay frequent flecks chalk, moderate flecks charcoal, occasional small stones	<input checked="" type="checkbox"/>	<input checked="" type="checkbox"/>
705	Furrow	Linear NE-SW profile: concave base: concave dimensions: min length 1.8m, max breadth 1.37m, max depth 0.35m	<input checked="" type="checkbox"/>	<input type="checkbox"/>
706	Fill	Firm mid grey brown silty clay moderate flecks charcoal	<input checked="" type="checkbox"/>	<input type="checkbox"/>
707	Gully	Linear NE-SW profile: near vertical base: flat dimensions: min length 1.8m, max breadth 0.49m, max depth 0.35m Gully has a rounded terminus near north-eastern limit of excavation.	<input checked="" type="checkbox"/>	<input type="checkbox"/>
708	Fill	Firm mid yellow brown silty clay frequent flecks charcoal, occasional small stones	<input checked="" type="checkbox"/>	<input type="checkbox"/>
709	Pit	Sub-oval NE-SW profile: irregular base: uneven dimensions: max length 1.65m, max breadth 0.7m, max depth 0.28m	<input checked="" type="checkbox"/>	<input type="checkbox"/>
710	Fill	Firm mid yellow brown silty clay occasional flecks charcoal, occasional small stones	<input checked="" type="checkbox"/>	<input type="checkbox"/>
711	Land drain	Linear NE-SW profile: vertical dimensions: min length 1.5m, max breadth 0.31m, min depth 0.67m Not fully excavated.	<input checked="" type="checkbox"/>	<input type="checkbox"/>
712	Fill	Firm mid yellow brown silty clay	<input checked="" type="checkbox"/>	<input type="checkbox"/>
713	Furrow	Linear NE-SW dimensions: min length 1.5m, max breadth 0.8m	<input type="checkbox"/>	<input type="checkbox"/>
714	Fill	Firm mid yellow brown silty clay occasional flecks charcoal, occasional small stones	<input type="checkbox"/>	<input type="checkbox"/>
715	Furrow	Linear NE-SW dimensions: min length 1.5m, max breadth 0.9m	<input type="checkbox"/>	<input type="checkbox"/>
716	Fill	Firm mid yellow brown silty clay occasional flecks charcoal, occasional small stones	<input type="checkbox"/>	<input type="checkbox"/>
717	Furrow	Linear NE-SW dimensions: min length 1.5m, max breadth 1.m	<input type="checkbox"/>	<input type="checkbox"/>
718	Fill	Firm mid yellow brown silty clay occasional flecks charcoal, occasional small stones	<input type="checkbox"/>	<input type="checkbox"/>
719	Furrow	Linear NW-SE dimensions: min length 1.5m, max breadth 0.75m	<input type="checkbox"/>	<input type="checkbox"/>
720	Fill	Firm mid yellow brown silty clay occasional flecks charcoal, occasional small stones	<input type="checkbox"/>	<input type="checkbox"/>
721	Furrow	Linear NE-SW dimensions: min length 1.5m, max breadth 0.6m	<input type="checkbox"/>	<input type="checkbox"/>
722	Fill	Firm mid yellow grey silty clay occasional flecks charcoal, occasional small stones	<input type="checkbox"/>	<input type="checkbox"/>



Trench: 8

Max Dimensions: Length: 30.00 m. Width: 1.60 m. Depth to Archaeology Min: 0.6 m. Max: 0.7 m.

OS Co-ordinates: Ref. 1: TL1264953098 Ref. 2: TL1267553083

Reason: Assess Archaeological Potential of Site: Arrayed Distribution

Context:	Type:	Description:	Excavated:	Finds Present:
800	Topsoil	Friable mid grey brown clay occasional small stones	<input type="checkbox"/>	<input type="checkbox"/>
801	Subsoil	Firm mid orange grey silty clay	<input type="checkbox"/>	<input type="checkbox"/>
802	Natural	Firm mid orange sandy clay occasional flecks manganese staining, occasional small stones	<input type="checkbox"/>	<input type="checkbox"/>



Trench: 9

Max Dimensions: Length: 50.00 m. Width: 1.60 m. Depth to Archaeology Min: 0.53 m. Max: 0.6 m.

OS Co-ordinates: Ref. 1: TL1263253063 Ref. 2: TL1258253063

Reason: Assess Archaeological Potential of Site: Arrayed Distribution

Context:	Type:	Description:	Excavated:	Finds Present:
900	Topsoil	Friable mid brown grey silty clay	<input type="checkbox"/>	<input type="checkbox"/>
901	Subsoil	Firm mid brown grey sandy clay	<input type="checkbox"/>	<input type="checkbox"/>
902	Natural	Firm light yellow grey sandy clay occasional small-medium stones	<input type="checkbox"/>	<input type="checkbox"/>
903	Furrow	Linear NE-SW profile: concave base: v-shaped dimensions: min length 2.5m, max breadth 0.76m, max depth 0.28m Feature has V-shaped plough scar in concave base.	<input checked="" type="checkbox"/>	<input type="checkbox"/>
904	Fill	Firm mid orange grey silty clay occasional small stones	<input checked="" type="checkbox"/>	<input type="checkbox"/>
905	Furrow	Linear NE-SW profile: concave base: uneven dimensions: min length 4.m, max breadth 1.15m, max depth 0.21m	<input checked="" type="checkbox"/>	<input type="checkbox"/>
906	Fill	Firm mid orange grey sandy clay Feature has plough scar in base.	<input checked="" type="checkbox"/>	<input type="checkbox"/>
907	Ditch	Linear NE-SW profile: concave base: concave dimensions: min length 2.5m, max breadth 0.7m, max depth 0.26m	<input checked="" type="checkbox"/>	<input type="checkbox"/>
908	Fill	Firm mid orange grey sandy clay occasional flecks charcoal	<input checked="" type="checkbox"/>	<input type="checkbox"/>
909	Furrow	Linear NE-SW profile: irregular base: concave dimensions: min length 3.3m, max breadth 0.95m, max depth 0.43m	<input checked="" type="checkbox"/>	<input type="checkbox"/>
910	Fill	Firm mid orange brown sandy clay occasional small stones	<input checked="" type="checkbox"/>	<input type="checkbox"/>



6.2 Appendix 2 – Artefact Summary

6.2.1 Introduction

The evaluation produced a finds assemblage comprising mainly pottery. Small quantities of fired clay, worked flint, roof tile and animal bone were also recovered (Table 1). The material was scanned to ascertain its nature, condition and, where possible, date range. No artefacts were recovered from Trenches 8 or 9.

Tr.	Feature	Type	Context	Spot date*	Pottery	Other finds
01	107	Ditch	108	-	7:23	Fired clay (22g)
	126	Tree-throw	127	Saxo-Norman	1:1	
	128	Tree-throw	129	-		Animal bone (34g)
	130	Ditch	131	Iron Age	3:10	Animal bone (6g)
	130	Ditch	132	Iron Age	1:3	
	135	Ditch	136	Early medieval	5:37	Animal bone (4g); snail shell (9g)
	137	Pit	138	High medieval	5:19	
	137	Pit	139	High medieval	2:95	
	142	Pit	143	Roman	1:3	
	144	Pit	145	-		Animal bone (3g)
	146	Layer	146	Post-medieval		Roof tile (72g)
	147	Ditch	148	Saxo-Norman	1:3	Animal bone (90g)
02	152	Pit	154	Post-medieval	3:25	Roof tile (16g)
02	203	Ditch	204	Late Iron Age	3:5	
	206	Ditch	207	Late Iron Age	3:1	
03	307	Land drain	308	Modern	1:4	Land drain (93g); roof tile (24g)
04	403	Ditch	404	Roman	2:17	
05	503	Ditch	504	Roman	2:9	
	503	Ditch	505	Roman	7:25	
	506	Ditch	507	Roman	1:3	
06	603	Ditch	604	Roman	21:104	Animal bone (13g); fired clay (13g)
	612	Ditch	614	Modern		Land drain (6g)
	615	Ditch	618	Roman	10:25	Burnt stone (76g)
	621		622	Roman	2:13	
	623	Ditch	624	Roman	3:27	
	625	Pit	626	Roman	5:114	
	627	Layer	627	Roman	4:21	Brick fragment (32g)
	628	Ditch	629	Roman	4:28	
07	703	Ditch	704	Post-medieval	2:6	Worked flint (14g); roof tile (45g)
Total					98:621	

* - spot date based on date of latest artefact in context
(sherd count : weight in grammes)

Table 1: Artefact summary by trench and feature



6.2.2 Pottery

A total of 98 pottery sherds, weighing 621g were recovered. These were examined by context and quantified using minimum sherd count and weight. Sherds are very small (average weight 6g) and generally abraded. Twenty-three fabric types were identified using common names and type codes in accordance with the Bedfordshire Ceramic Type Series, held by Albion Archaeology. Fabrics are listed below (Table 2) in chronological order.

Fabric type	Common name	Sherd No.	Context/Sherd No.
<i>Late Bronze Age / early Iron Age</i>			
Type F01C	Flint and quartz	1	(704):1
<i>Late Iron Age</i>			
Type F06B	Medium grog	1	(704):1
Type F07	Shell	4	(204):1, (207):3
Type F09	Sand and grog	2	(204):2
Type F	Non-specific Iron Age	4	(131):3, (132):1
<i>Roman</i>			
Type R01	Samian ware	5	(604):2, (622):2, (629):1
Type R03C	Smooth whiteware	1	(604):1
Type R05A	Orange sandy	1	(604):1
Type R05B	Fine orange	1	(624):1
Type R06B	Coarse greyware	4	(404):2, (604):1, (624):1
Type R06C	Fine greyware	18	(504):2, (505):1, (604):5, (618):8, (627):1, (629):1
Type R06D	Micaceous greyware	2	(624):1, (629):1
Type R07B	Sandy blackware	1	(618):1
Type R07C	Gritty blackware	2	(604):2
Type R13	Shell	27	(143):1, (505):6, (507):1, (604):9, (618):1, (626):5, (627):3, (629):1
<i>Saxo-Norman</i>			
Type B01	St Neots-type ware	1	(136):1
Type B01A	St Neots-type (orange)	3	(127):1, (136):1, (154):1
Type B01B	St Neots-type (fine)	1	(148):1
<i>Medieval</i>			
Type B07	Shell	3	(136):3
Type C05	Sand	1	(154):1
Type C60	Hertfordshire-type greyware	7	(138):5, (139):2
<i>Modern</i>			
Type P43	Pearlware	1	(308):1
UNID	Unidentified/undatable	8	(108):7, (154):1

Table 2: Pottery type series

Pre-Roman

The earliest pottery recovered comprises an abraded flint and quartz tempered sherd (3g) datable to the late Bronze Age/early Iron Age period, which occurs as a residual find in post-medieval ditch [703]. Seven undiagnostic sherds (9g) datable to the late Iron Age period were recovered from ditches [203], [206] and [703]. Fabrics are shell (type F07), grog (type F06B) and grog/sand tempered (type F09) and all sherds are highly abraded. Ditch [130] contained four undiagnostic sherds (13g) datable to the Iron Age period.



Roman

Pottery datable to the early Roman period comprises 62 sherds weighing 389g, the majority deriving from features in Trenches 4, 5, and 6, notably ditch [603] and land drain [605]. The sherds are small and extensively abraded. Fabric types are mainly locally manufactured, reduced, sand and shell tempered coarsewares (types R06/R07 and R13 respectively).

Regional imports are represented by a sherd of 2nd century whiteware from the Verulamium (St Albans) region. Five sherds of samian, a continental fineware import from Gaul (France), were also identified. Diagnostic forms comprise lid-seated and everted rim jars, a triangular rim bowl and a large jar with an undercut rim.

Saxo-Norman and medieval

Saxo-Norman and medieval pottery derives entirely from features in Trench 1. Five undiagnostic shell tempered sherds in the St Neots-type tradition (types B01, B01A and B01B), of 10th -11th century date, were recovered from ditches [135], [147], pit [152] and tree-throw [126]. Three sherds of 12th-13th century shell tempered pottery (type B07) were recovered from ditch [135]. The remainder of the medieval assemblage comprises sand tempered sherds of probable local manufacture (types C05 and C60), datable from the 12th-14th centuries, recovered from pits [137] and [152]. Diagnostic forms are a square rim jar, and a strap handle from a jug, the latter with stabbed and incised decoration.

Unidentified

Seven undiagnostic shell tempered sherds (23g) derived from the fill of ditch [107]. All are highly abraded and extensively leached and could either be of late Iron Age/early Roman or early medieval origin. A single shell tempered sherd (4g) occurred as a residual find in post-medieval pit [152]. The poor condition of this material precludes further classification.

6.2.3 Other finds

Five sand tempered flat roof tile fragments of late or post-medieval date were recovered from post-medieval and modern features in Trenches 1, 3 and 7. Layer (627) yielded an abraded sand tempered brick or roof tile (*tegula*) fragment (32g), datable to the Roman period. The fills of ditches [107] and [603] contained four amorphous fired clay pieces (35g) in a coarse sand tempered and organic fabric.

Seventeen animal bone fragments, weighing 137g, were recovered from ditches of Iron Age, Saxo-Norman and medieval date within Trench 1. Two fragments (13g) derived from Roman ditch [603] in Trench 6. All are small (average fragment weight 7g) and highly abraded. Recognisable elements comprise long bone, skull and mandible fragments of undiagnostic species.

A probable unfinished flint end scraper (14g) was a residual find in post-medieval ditch [703].

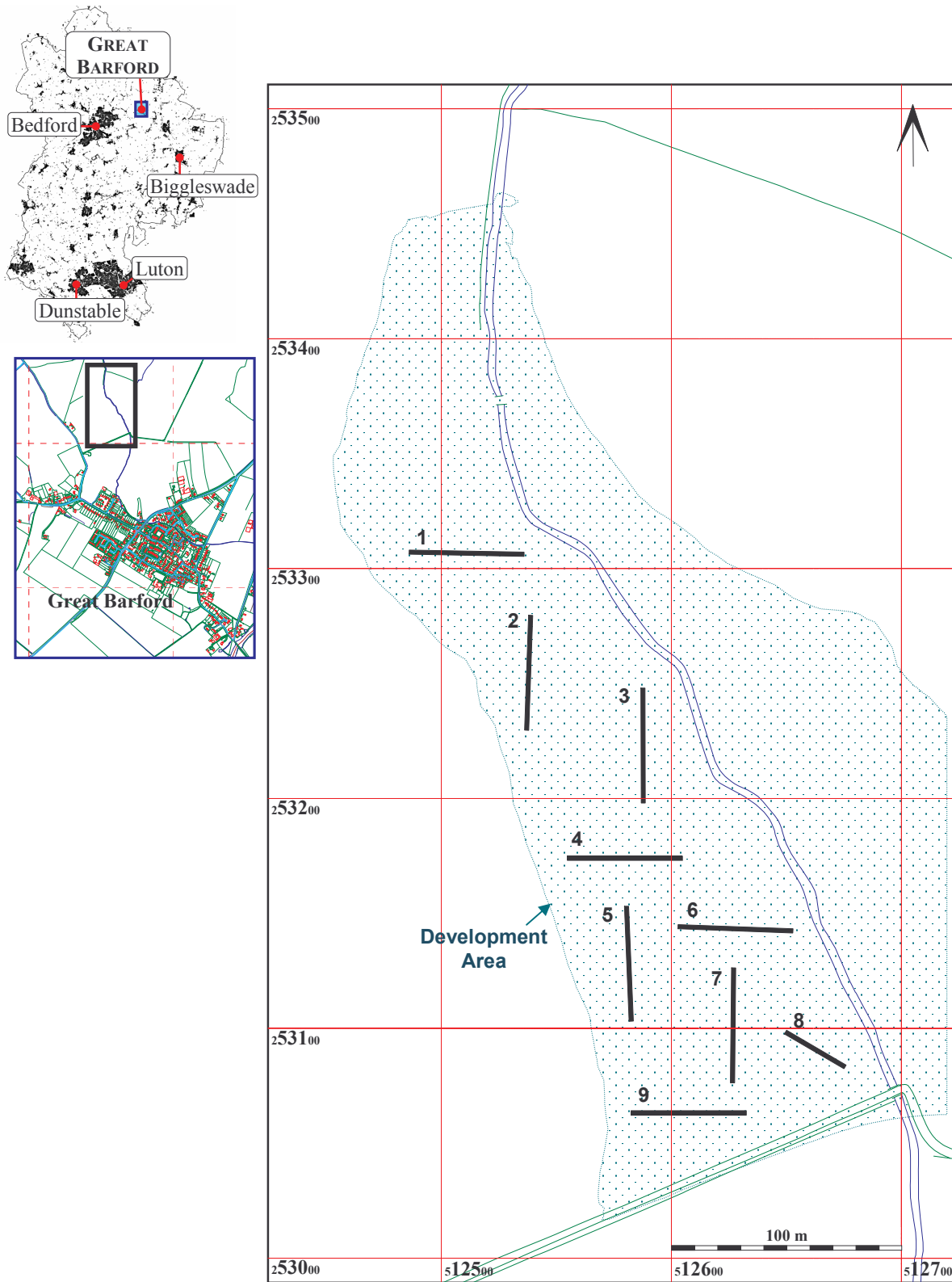
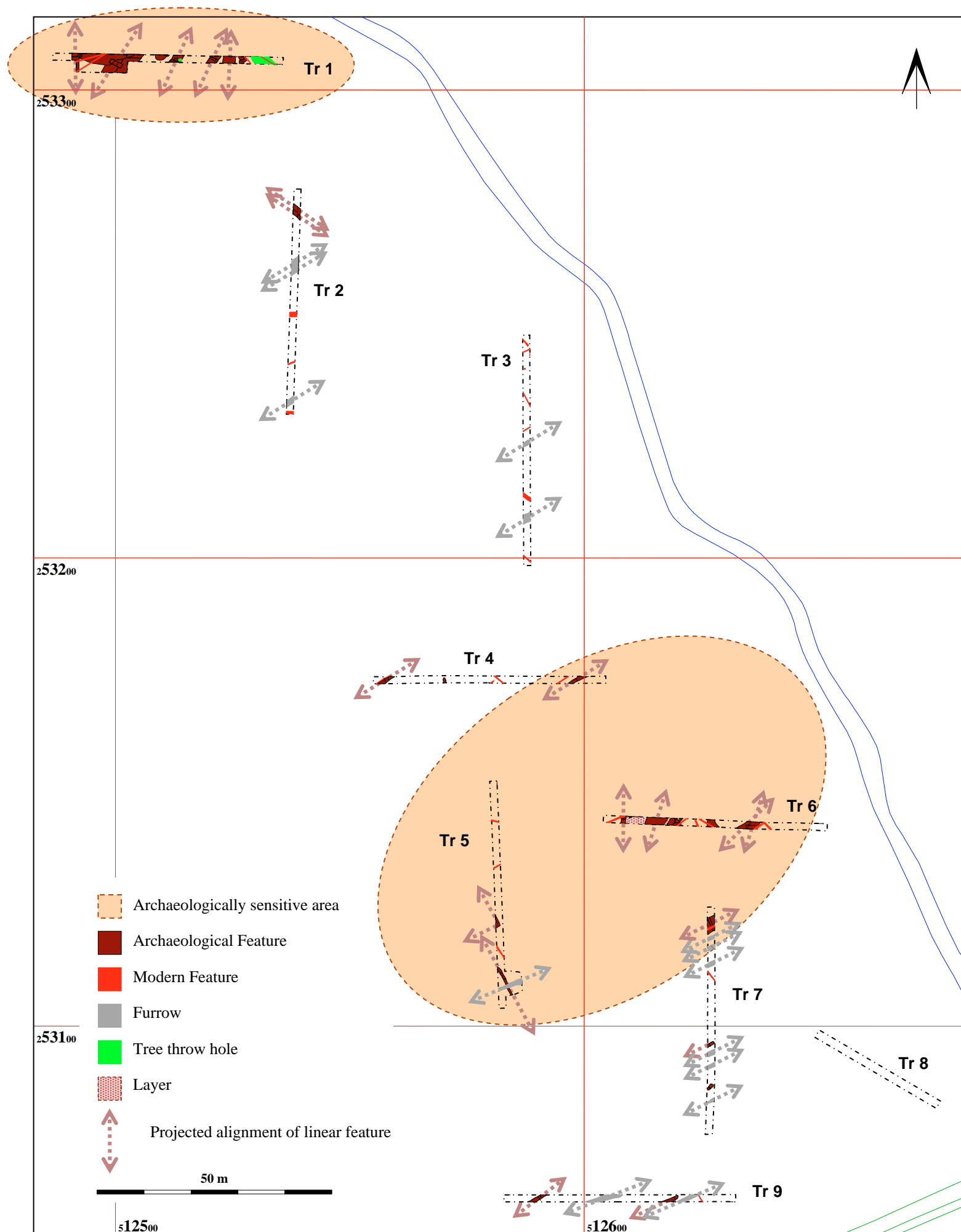


Figure 1: Site location map and trench plan

Base map reproduced from the Ordnance Survey Land-line Map (2001), with the permission of the Controller of Her Majesty's Stationery Office, by Bedfordshire County Council, County Hall, Bedford. OS Licence No. 076465(LA). © Crown Copyright.



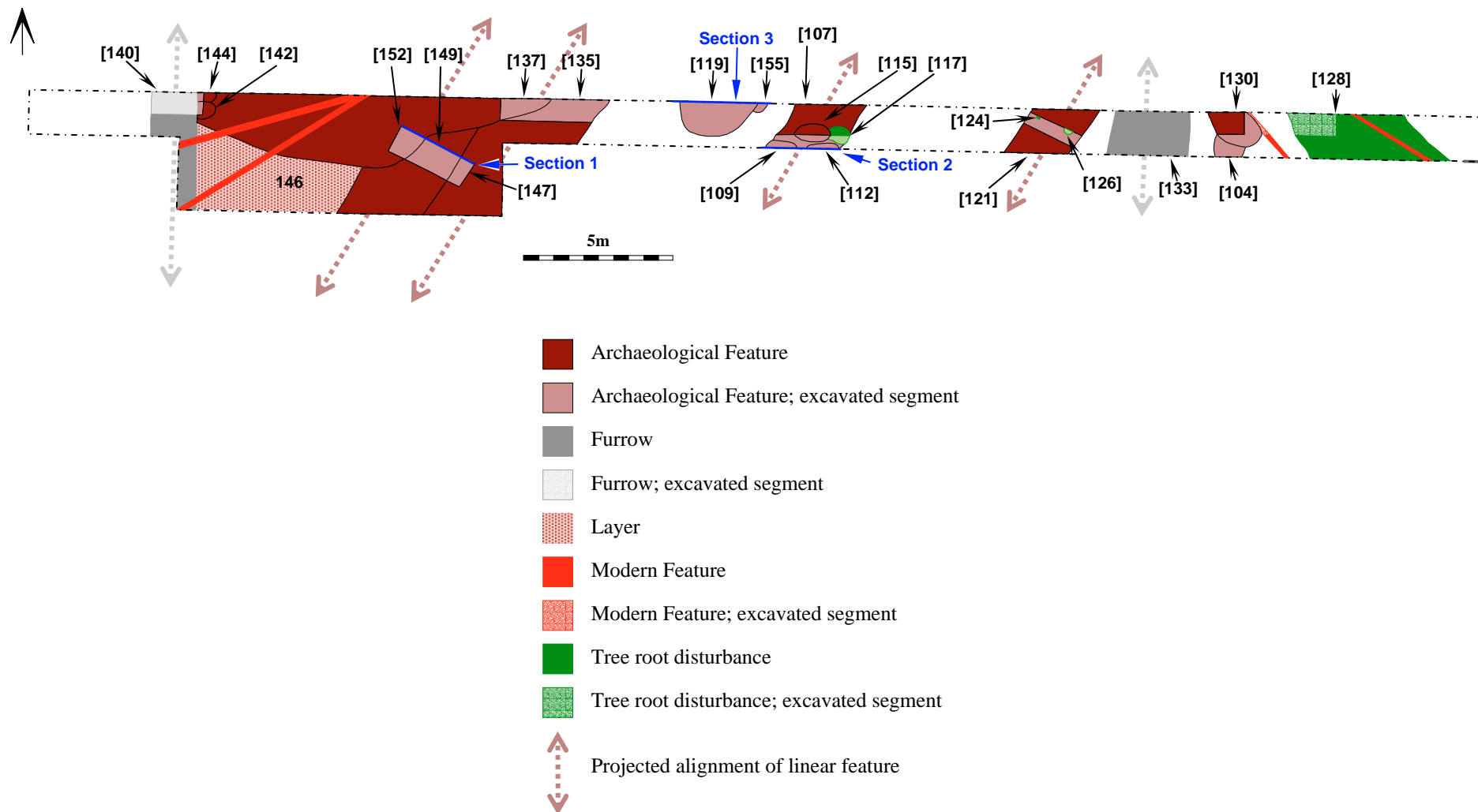
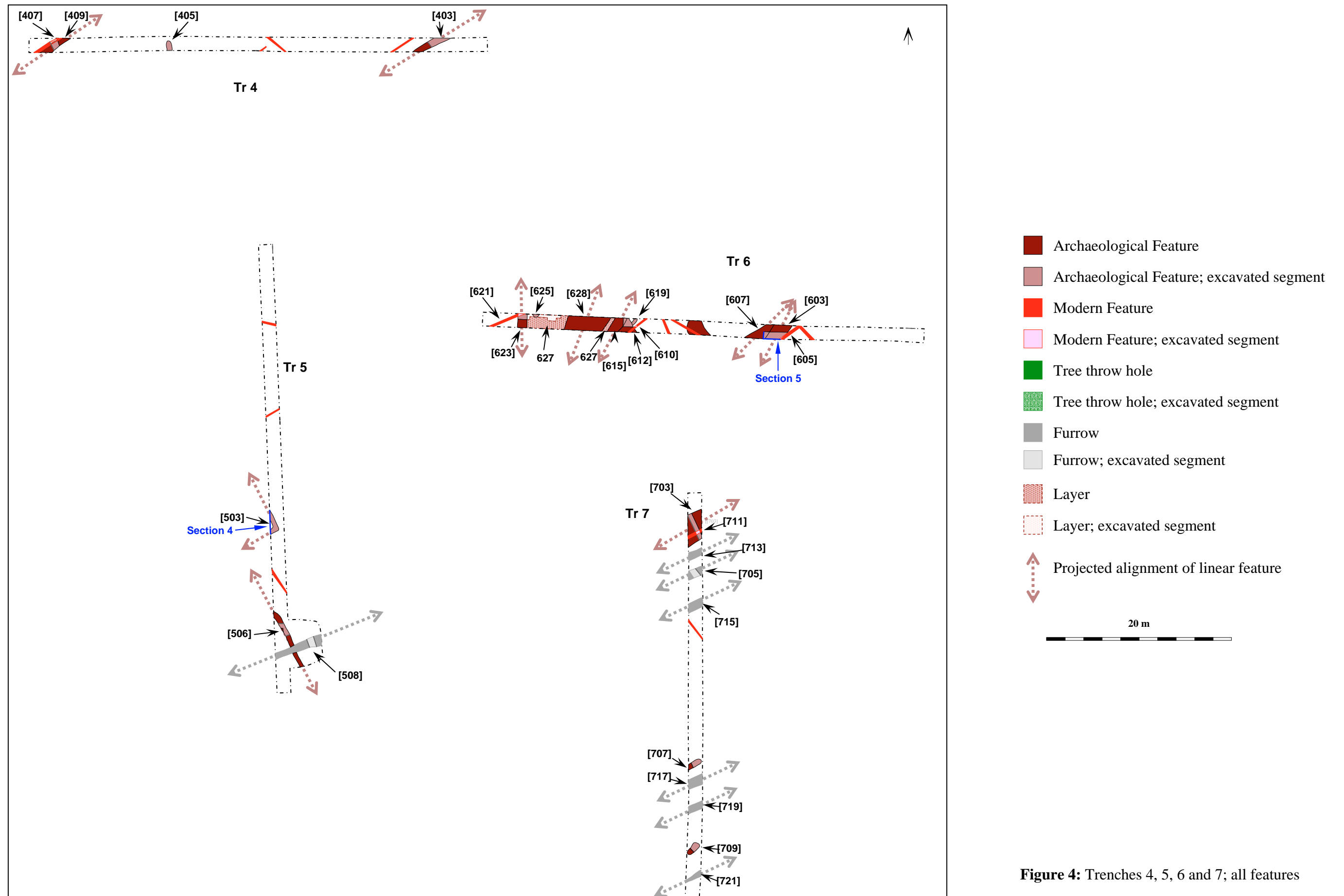


Figure 3: Trench 1; all features



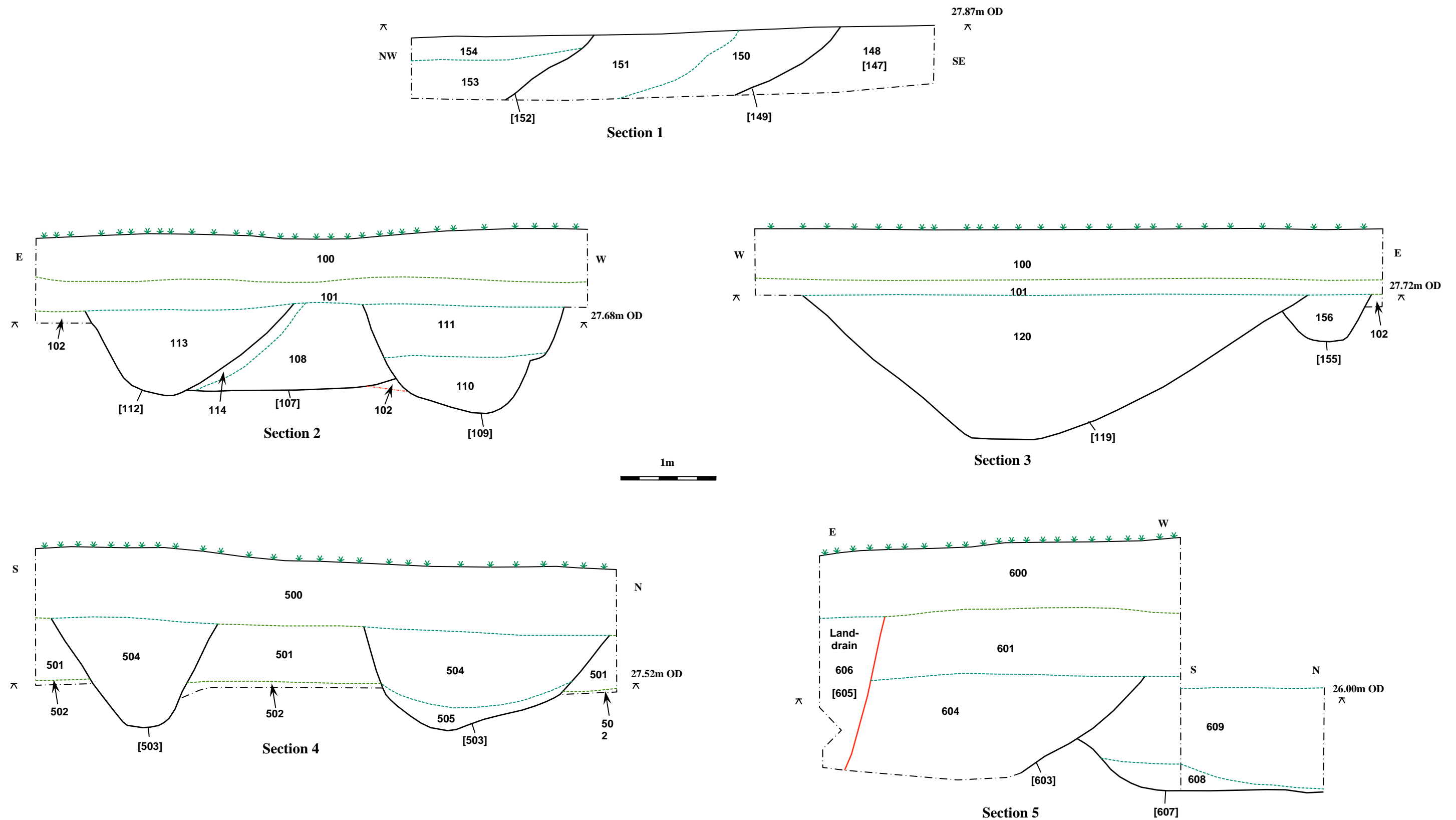


Figure 5: Selected sections