

**LAND NORTH OF KEYSOE ROW WEST
KEYSOE
BEDFORDSHIRE**

**ARCHAEOLOGICAL OBSERVATION, INVESTIGATION
RECORDING, ANALYSIS AND PUBLICATION**

Project: KR 1211
Document: 2007/49
Version: 1.0

Compiled by	Checked by	Approved by
Adam Lodoen	David Ingham/Joe Abrams	Drew Shotliff

1st June 2007

Produced for:
John S. Creasey (Architect and Project Manager)

On behalf of:
Reverend Charles Royden
St Mark's Church Community Centre



Contents

Structure of the Report	4
Key Terms	4
Non-Technical Summary	5
1. INTRODUCTION	6
1.1 Background	6
1.2 Site Location	6
1.3 Archaeological Background	6
2. RESULTS	7
2.1 Introduction	7
2.2 Methodology	7
2.3 Results	7
3. SYNTHESIS	8
3.1 Interpretation	8
3.2 Summary	8
4. BIBLIOGRAPHY	9



LIST OF FIGURES

Figure 1: Site location map

Figure 2: Extent of observed groundworks

Figure 3: Development area overlaid on to aerial photograph showing HER 16679 immediately north of the new western end of the new Access track (Aerofilms/96c/564/run 12/ 2163)

Figure 4: Photographs of access track and car park following removal of topsoil

The figures are bound at the back of the report.



Preface

Every effort has been made in the preparation of this document to provide as complete a summary as possible within the terms of the method statement. All statements and opinions in this document are offered in good faith. Albion Archaeology cannot accept responsibility for errors of fact or opinion resulting from data supplied by a third party, or for any loss or other consequence arising from decisions or actions made upon the basis of facts or opinions expressed in this document.

This report has been prepared by Adam Lodoen (Assistant Supervisor) and David Ingham (Project Officer). Joe Abrams (Project Manager) was responsible for the day-to-day management of the project. The fieldwork was undertaken by Adam Lodoen. Joan Lightning (CAD Technician) produced the figures. All Albion Archaeology projects are under the overall management of Drew Shotliff (Operations Manager).

Version History

Version	Issue date	Reason for re-issue
1.0	1 st June 2007	n/a

Albion Archaeology
 St Mary's Church
 St Mary's Street
 Bedford, MK42 0AS
 ☎: 01234 294006
 Fax: 01234 294008
 e-mail: office@albion-arch.com

Structure of the Report

After the introductory Section 1, there is a summary of the results of the fieldwork in Section 2, followed by a brief conclusion (Section 3). Section 4 is a bibliography.

Key Terms

Throughout this report the following terms or abbreviations are used:

<i>Albion</i>	Albion Archaeology
<i>CAO</i>	County Archaeological Officer
<i>Client</i>	Rev. Charles Royden, St Mark's Church Community Centre
<i>Architect</i>	John S. Creasey
<i>IFA</i>	Institute of Field Archaeologists
<i>Procedures Manual</i>	<i>Procedures Manual Volume 1 Fieldwork, 2nd Edition 2001.</i> Bedfordshire County Council



Non-Technical Summary

Bedford Borough Council granted planning permission (04/1378/FUL) for the creation of a woodland burial ground with associated car parking and extension to the roadway to the north of Keysoe Row West, Keysoe, Bedfordshire.

Because the work had the potential to disturb archaeological deposits, a condition was attached to the planning permission, requiring the implementation of a programme of archaeological works. The County Archaeological Officer (CAO) issued a brief (BCC 2007) specifying what was required.

Albion Archaeology was commissioned by John S. Creasey (Architect and Project Manager), on behalf of the Reverend Charles Royden, St Mark's Church Community Centre, to prepare a project design (Albion Archaeology 2007) and undertake a programme of archaeological observation, investigation, recording, analysis and publication of the site.

The site of the development is centred at TL 0760 6133, to the east of College Farm, Keysoe. It lies at a height of c.80m OD and is c.0.8 hectares in size. The underlying geological deposits comprise Boulder clay overlying Oxford clay.

The programme of archaeological observation and recording was undertaken between 8th and 11th May 2007. During this period, all groundworks which required monitoring were completed. The groundworks comprised the removal of topsoil for the access road and car park.

The development area is located near the College Farm medieval moated site and its associated banked enclosure, which is a Scheduled Ancient Monument (NMR TL 06 SE 6). It also lies within an extensive area of cropmarks (HER 16679), and therefore the potential for archaeological remains from this period was considered high. However, no archaeological features were revealed during the works. The removal of only topsoil from most of the area has ensured that if archaeological remains exist within the site, they remain preserved in situ beneath the development.



1. INTRODUCTION

1.1 Background

Bedford Borough Council granted planning permission (04/1378/FUL) for the creation of a woodland burial ground with associated car parking and extension to the roadway to the north of Keysoe Row West, Keysoe, Bedfordshire.

Because the work had the potential to disturb archaeological deposits, a condition was attached to the planning permission, requiring the implementation of a programme of archaeological works. The County Archaeological Officer (CAO) issued a brief (BCC 2007) specifying what was required.

Albion Archaeology was commissioned by John S. Creasey (Architect and Project Manager), on behalf of the Reverend Charles Royden, St Mark's Church Community Centre, to prepare a project design (Albion Archaeology 2007) and undertake a programme of archaeological observation, investigation, recording, analysis and publication of the site.

1.2 Site Location

The site of the development is centred at TL 0760 6133, to the east of College Farm, Keysoe. It lies at a height of *c.*80m OD and is *c.*0.8 hectares in size. The underlying geological deposits comprise Boulder clay overlying Oxford clay.

1.3 Archaeological Background

The development is within an area of archaeological sensitivity. This is primarily due to its proximity to the College Farm medieval moated site and its associated banked enclosure, which is a Scheduled Ancient Monument (NMR TL 06 SE 6).

In addition to this, the access track runs through an area identified on aerial photographs as being of potential archaeological interest. The crop-marks (Figure 3, HER 16679) identified in this area have not been investigated and remain undated.



2. RESULTS

2.1 Introduction

The programme of archaeological observation and recording was undertaken between 8th and 11th May 2007. During this period, all groundworks which required monitoring were completed. A mechanical excavator was used for all excavation.

2.2 Methodology

The archaeological works adhered to the standards and field methods set out in the project design (Albion Archaeology 2007) and Section 5 of the brief (BCC 2007), specifically:

- 1 All excavation below ground level was monitored to try to identify *in situ* archaeological deposits.
- 2 All disturbed soil was scanned for artefacts.
- 3 Any excavated deposits were fully recorded in accordance with Albion's *Procedures Manual* and the detailed requirements in Section 5 of the brief.
- 4 All archaeological observations were recorded at a suitable scale on base plans that were tied in to the OS national grid.
- 5 An appropriate photographic record was kept.

The project adhered to the standards set out in the Institute of Field Archaeologists *Codes of Conduct and Standards and Guidance* documents (specifically *Standard and Guidance for an Archaeological Watching Brief*, September 1999), in English Heritage's *Management of Archaeological Projects* (1991) and in Albion Archaeology's *Procedures Manual*.

2.3 Results

The groundworks comprised the removal of 0.1m of topsoil for the access road and car park (Figures 1 and 2). The only deposit revealed was a layer of topsoil (100), which comprised dark greyish brown clayey silt.



3. SYNTHESIS

3.1 Interpretation

No archaeological features were revealed during the groundworks, though excavation did not reach a depth where archaeological deposits were likely to be encountered (Figure 4). Therefore, it is possible that archaeological features have been preserved *in situ* beneath the development.

3.2 Summary

The development area is located within an extensive area of crop-marks (Figure 3, HER 16679), and therefore the potential for archaeological remains from this period was considered high. However, no archaeological features were revealed during the works. The removal of only topsoil from most of the area has ensured that if archaeological remains exist within the site, they remain preserved *in situ* beneath the development.



4. BIBLIOGRAPHY

Albion Archaeology 2007, *Land North of Keysoe Row West, Keysoe, Bedfordshire. Project Design for Programme of Archaeological Observation, Recording, Analysis and Publication.* Report 2007:44.

Bedfordshire County Council 2007, *Brief for a programme of archaeological observation, investigation, recording, analysis and publication at Land North of Keysoe Row West, Keysoe, Bedfordshire.* (V2 16th April 2007).

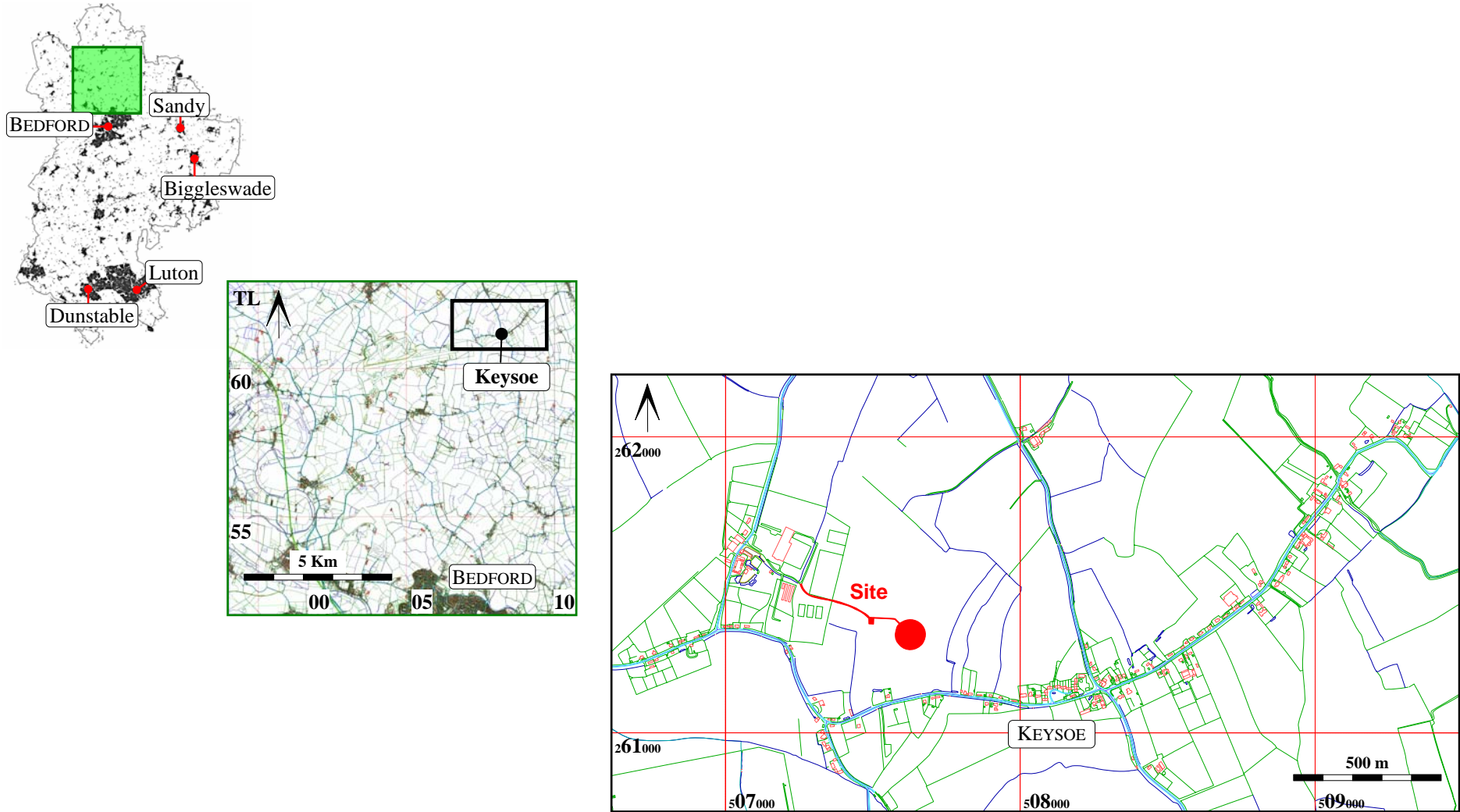


Figure 1: Site location map

Base map reproduced from the Ordnance Survey Land-line Map (2004), with the permission of the Controller of Her Majesty's Stationery Office, by Bedfordshire County Council, County Hall, Bedford. OS Licence No. 100017358. © Crown Copyright.

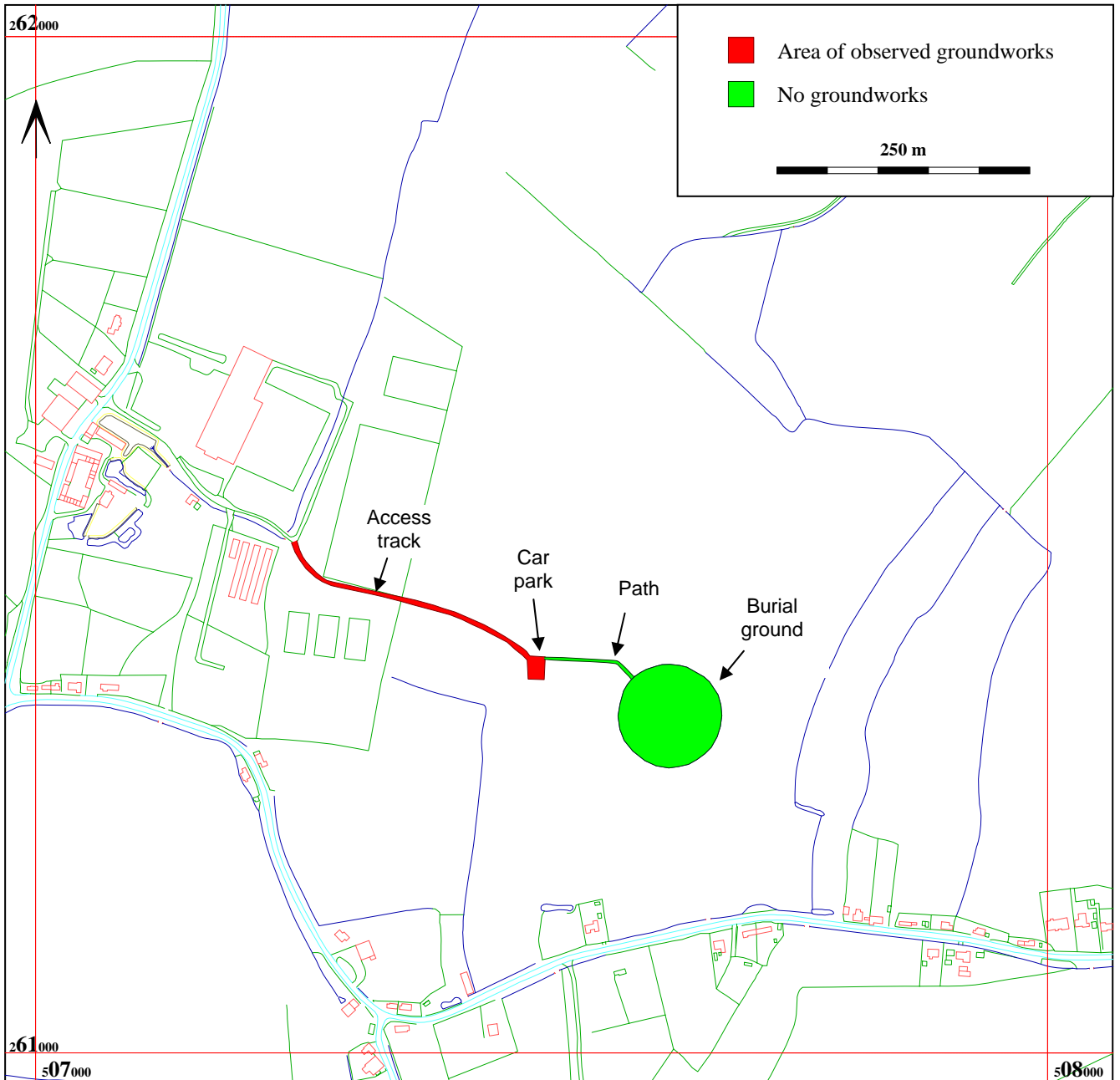


Figure 2: Extent of observed groundworks

Base map reproduced from the Ordnance Survey Land-line Map (2004), with the permission of the Controller of Her Majesty's Stationery Office, by Bedfordshire County Council, County Hall, Bedford. OS Licence No. 100017358. © Crown Copyright.

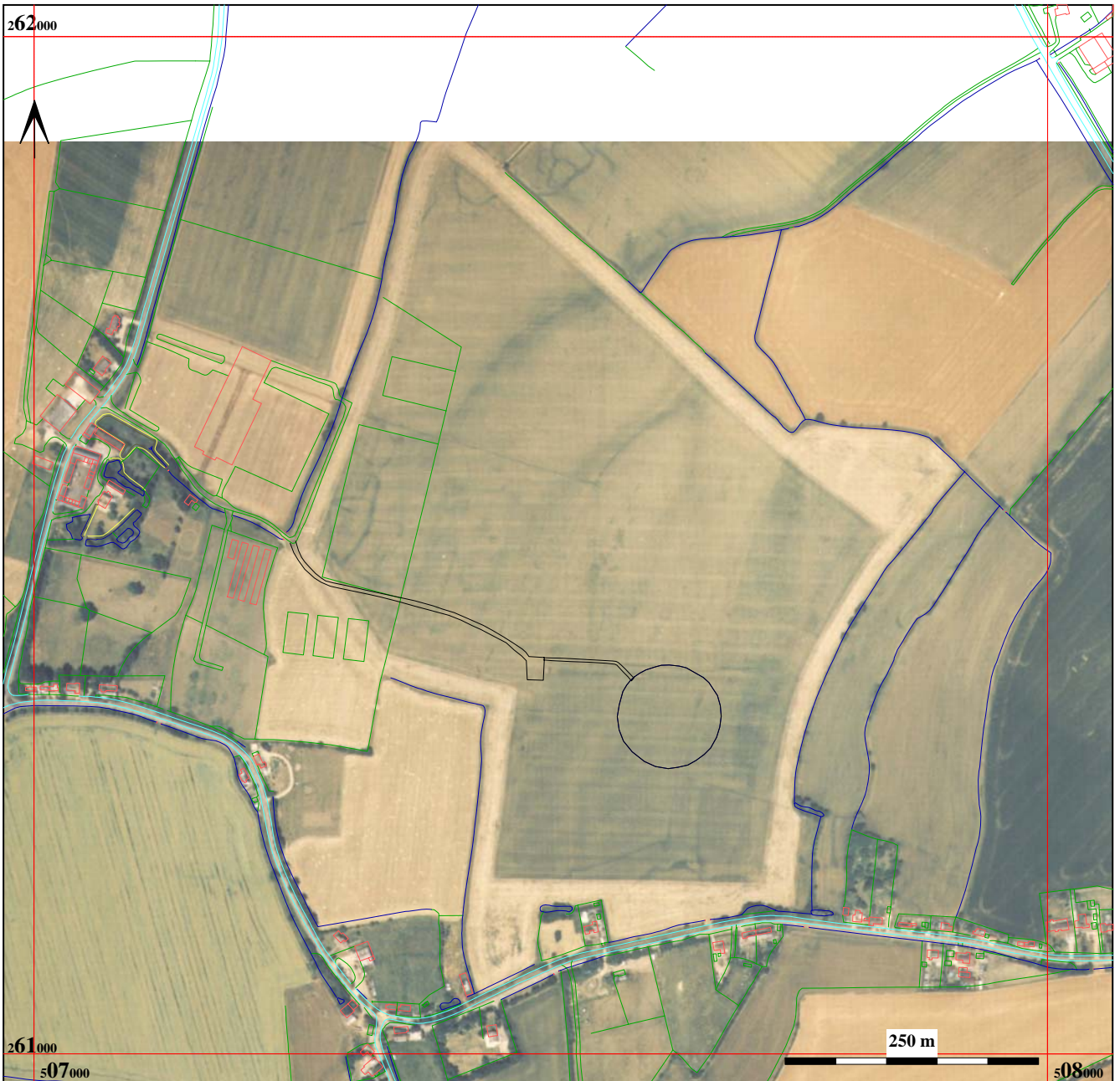


Figure 3: Development area overlaid on to aerial photograph showing HER 16679 immediately north of the new western end of the new Access track (Aerofilms/96c/564/run 12/ 2163)

Base map reproduced from the Ordnance Survey Land-line Map (2004), with the permission of the Controller of Her Majesty's Stationery Office, by Bedfordshire County Council, County Hall, Bedford. OS Licence No. 100017358. © Crown Copyright.



Photograph of road following removal of topsoil, looking east. 1m scales



Photograph of car park following removal of topsoil, looking north. 1m scales

Figure 4: Photographs of access track and car park following removal of topsoil