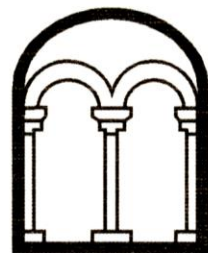


**FORMER DAIRY CREST SITE  
FENSTANTON  
CAMBRIDGESHIRE  
ARCHAEOLOGICAL EVALUATION**

**Albion**  
archaeology



**FORMER DAIRY CREST SITE  
FENSTANTON  
CAMBRIDGESHIRE**

**ARCHAEOLOGICAL EVALUATION**

Project: DC3112  
CHER event no.: ECB5002  
OASIS ref: albionar1-278059

Document: 2017/184  
Version 1.2

Compiled by	Checked by	Approved by
David Ingham	Gary Edmondson	Drew Shotliff

15th November 2017

Produced for:  
CgMs Consulting Ltd

On behalf of:  
Morris Homes Ltd



---

## Contents

---

<b>1. INTRODUCTION</b>	<b>4</b>
1.1 Planning Background	4
1.2 Methods	4
<b>2. RESULTS</b>	<b>5</b>
2.1 Introduction	5
2.2 Overburden and Geological Deposits	5
2.3 Archaeological Features	5
2.4 Artefacts and Ecofacts	6
2.5 Environmental Sampling	8
<b>3. CONCLUSIONS</b>	<b>9</b>
<b>4. BIBLIOGRAPHY</b>	<b>10</b>
<b>5. APPENDIX 1: TRENCH SUMMARIES</b>	<b>11</b>

### *List of Figures*

**Figure 1:** Site location

**Figure 2:** Location of trial trenches

**Figure 3:** Plan of all features and selected trench photographs

**Figure 4:** Selected photographs and section drawings

### *List of Tables*

**Table 1:** Sequence of deposits

**Table 2:** Artefact summary by trench and feature

**Table 3:** Pottery type series



## Preface

*All statements and opinions in this document are offered in good faith. This document has been prepared for the titled project or named part thereof and was prepared solely for the benefit of the client. The material contained in this report does not necessarily stand on its own and should not be relied upon by any third party. This document should not be used for any other purpose without an independent check being carried out as to its suitability and the prior written authority of Albion Archaeology (a trading unit of Central Bedfordshire Council). Any person/party relying on the document for such other purposes agrees and will by such use or reliance be taken to confirm their agreement to indemnify Albion Archaeology for all loss or damage resulting therefrom. Albion Archaeology accepts no responsibility or liability for this document to any party other than the persons/party by whom it was commissioned. This document is limited by the state of knowledge at the time it was written.*

## Acknowledgements

*The project was commissioned by Myk Flitcroft (CgMs Consulting Ltd) on behalf of Morris Homes Ltd. It was monitored on behalf of the Local Planning Authority by Andy Thomas of Cambridgeshire County Council Historic Environment Team.*

*The fieldwork was undertaken by Tori Guy (Archaeological Supervisor), assisted by Gary Manning and Catie Watts. Metal detecting was undertaken by Mike Head. This report was prepared by David Ingham (Project Officer) with contributions from Gary Edmondson (environmental sampling) and Jackie Wells (Finds Officer). All Albion projects are under the overall management of Drew Shotliff (Operations Manager)*

Albion Archaeology  
St Mary's Church  
St Mary's Street  
Bedford  
MK42 0AS  
☎: 0300 300 6880

## Version History

Version	Issue date	Reason for re-issue
1.0	08/11/2017	n/a
1.1	09/11/2017	Incorporating comments from the Archaeological Consultant
1.2	15/11/2017	Incorporating comments from the Client



## 1. INTRODUCTION

---

### 1.1 *Planning Background*

Morris Homes Ltd has planning permission (16/01206/FUL) to redevelop the former Dairy Crest site in Fenstanton (Fig. 1). Because of the area's archaeological background, the Cambridgeshire County Council Historic Environment Team (HET) recommended that planning consent should include a condition requiring a scheme of archaeological work (HET 2017). The first phase of this work is an evaluation to provide more detailed information concerning the survival of archaeological remains within the site and the potential impact of the development on them.

Albion Archaeology was appointed by CgMs Consulting Ltd to carry out the evaluation in accordance with a Written Scheme of Investigation (Albion Archaeology 2017a) that was agreed in advance with the HET. The first phase of this evaluation comprised the monitoring of geotechnical test pits in order to assess the level of truncation that the site had suffered during construction of the dairy (Albion Archaeology 2017b). The first batch of these in the eastern half of the site revealed the extensive presence of deposits predating the dairy's construction. As a result, an initial phase of trial trenching within Morris Homes' first phase of development was agreed with the HET. This report presents the results from these initial trenches, which will be incorporated into an overall report once the whole site has been evaluated.

### 1.2 *Methods*

Five trenches were excavated at the eastern end of the site on 23rd–24th October 2017 (Fig. 2), with their layout designed to achieve an even coverage of the area. The trenches were intended to be 30m long, but due to conditions on site, Trenches 2, 4 and 5 had to be shortened to 22–24m long, and Trench 1 to 12m. All five were 2.4m wide, though their sides were stepped out to twice this width in order to allow safe access.

The concrete slab that had covered the whole area was removed before the trenches were excavated. The trenches were opened by a mechanical excavator fitted with a flat-edged ditching bucket. The machine was operated by an experienced driver under the supervision of an archaeologist. All archaeological excavation and recording was carried out by experienced Albion Archaeology staff, with metal detecting carried out by an experienced practitioner. All deposits were recorded using a unique number sequence, commencing at 100 for Trench 1, 200 for Trench 2 *etc.* Surface finds were collected from unexcavated features.

A full methodology is provided in the Written Scheme of Investigation (Albion Archaeology 2017a).



## 2. RESULTS

### 2.1 Introduction

All deposits found in the trenches are summarised below, with more detailed information in Appendix 1 and on Figures 3–4. Descriptions of the artefacts and the results of the environmental sampling can also be found below.

Contexts in brackets refer to deposits recorded on site. Cut features are in square brackets; deposits or layers are in round brackets.

### 2.2 Overburden and Geological Deposits

The concrete slab that was removed before the trial trenching began was 0.1–0.2m thick. This overlay 0.4–0.55m of made ground, below which were the remnants of the pre-dairy topsoil in Trenches 1, 2, 4 and 5, and a subsoil in all trenches that was 0.2–0.35m thick (Table 1). The geological stratum beneath this comprised sandy silt with pockets of sand and clay.

Trench	Thickness of Deposit			Height of archaeological horizon
	Made ground (m)	Buried topsoil (m)	Subsoil (m)	
1	0.4	0.05	0.35	N end: 10.95mOD; S end: 10.9mOD
2	0.5	0.15	0.2	NW end: 10.5mOD; SE end: 10.4mOD
3	0.45	-	0.35	E end: 10.7mOD; W end: 10.8mOD
4	0.45	0.2	0.35	NE end: 10.6mOD; SW end: 10.4mOD
5	0.5	0.2	0.3	E end: 10.5mOD; W end: 10.4mOD

**Table 1:** Sequence of deposits

### 2.3 Archaeological Features

The five trenches contained a dense array of archaeological features dating mostly to the Roman period, with an additional indication of late Iron Age activity in Trench 1 (Table 2). The features identified were primarily ditches/gullies and pits, which were present in all five trenches (Fig. 3).

The ditches were arranged on a predominantly WNW–ESE alignment, and most were relatively substantial — few were less than 0.3m deep, with the largest ones measuring up to 2m wide and 1m deep (Fig. 4: Photographs 7 and 8). Most were infilled with fairly dark deposits that suggest an anthropogenic origin, with ditches [209] and [303] in particular producing large quantities of pottery and animal bone. Some of the boundaries that they defined were long-lived, with evidence of re-cutting over an extended period particularly noticeable in the southern part of Trench 4; other re-cuts that were identified may represent little more than episodes of cleaning.

None of the pits identified within the trenches was particularly large, although [212], [215] and [321] were all 0.6–0.7m deep (Fig. 4: Section c). Pit [104] contained a relatively large amount of pottery for its size, while a large assemblage was also recovered from [321]. No conclusive evidence of function was apparent for any of the pits, but [212] and [215] may have been small quarries, as suggested by their size, irregularity and intercutting nature.



The other features identified within the trenches comprised posthole [122], which contained postpipe [108], indicating where the post had originally been; and a possible second posthole [309]. Ditch [311] may also have been associated with some type of pyrotechnic installation rather than merely demarcating a boundary, as it contained significant evidence of burning and appeared to have a clay lining (Fig. 4: Photograph 5). An inhumation burial [514] was also exposed in Trench 5, apparently dug through the infill of ditch [512]; this was left *in situ*.

## 2.4 Artefacts and Ecofacts

Twenty-one features across all five trenches yielded an assemblage comprising mainly pottery and animal bone, the majority from features in Trenches 2 and 3 (Table 2).

Tr.	Feature	Description	Fill	Date range	Finds Summary
1	104	Pit	105	Early Roman C1-2	Pottery (338g); animal bone (16g)
	110	Ditch	111	Late Iron Age	Pottery (9g)
			112	Late Iron Age	Pottery (17g); animal bone (66g)
	114	Ditch	115	Late Iron Age	Pottery (51g); animal bone (351g)
			115	Iron Age	Pottery (19g); animal bone (127g)
	117	Ditch	118	Undated	Animal bone (81g)
121			Iron Age	Pottery (32g); animal bone (10g)	
2	204	Ditch	205	Undated	Animal bone (6g); shell (33g)
	206	Ditch	207	Early Roman C1-2	Pottery (32g)
	209	Ditch	208	Early Roman C1-2	Pottery (877g); animal bone (1.5kg)
	212	Quarry pit	214	Early Roman C1-2	Pottery (19g)
	215	Quarry pit	217	Roman C2-4	Pottery (86g); copper-alloy stylus (RA1); copper-alloy coin (RA3); animal bone (26g); oyster shell (75g)
			218	Roman C2-3	Pottery (17g); animal bone (30g)
3	303	Ditch	306	Roman C2-3	Pottery (700g); ceramic roof tile (74g); animal bone (1.1kg)
	307	Tree throw	308	Undated	Oyster shell (19g)
	311	Ditch	316	Roman C2-3	Pottery (145g); fired clay (117g); mortar (288g)
	319	Pit	320	Roman C2-3	Pottery (68g); animal bone (416g)
	321	Pit	323	Roman C2-3	Pottery (925g); ceramic brick/tile (49g); iron nail x1; animal bone (138g); oyster shell (57g)
4	406	Ditch	408	Early Roman C1-2	Pottery (11g)
	409	Ditch	412	Undated	Animal bone (831g)
	413	Ditch	414	Undated	Animal bone (10g)
	415	Ditch	417	Roman	Pottery (16g); animal bone (124g)
	421	Ditch	423	Roman C2-3	Pottery (272g); animal bone (14g)
	5	509	Ditch	510	Early Roman C1-2
511				Early Roman C1-2	Pottery (109g); animal bone (21g)
514		Grave	515	Early Roman C1-2	Pottery (25g)

**Table 2:** Artefact summary by trench and feature

### 2.4.1 Pottery

The assemblage totals 141 sherds (3.8kg), representing a minimum of 79 vessels and spanning a date range from the middle/late Iron Age to the middle Roman period. The moderately abraded sherds are sizeable, with a mean weight of 28g, suggesting primary deposition. Fourteen fabric types were identified (Table 3).

Four abraded sand-tempered sherds (55g) of probable middle or late Iron Age date occurred in ditch [117] and residually in ditches [114] and [509]. Grog- and/or sand-



tempered pottery of transitional late Iron Age / early Roman date (37 sherds, 816g) was recovered from ditches [110], [114] [209] and [509]. Forms present are narrow-necked jars with everted rims, one cordoned and one with combed decoration.

Roman pottery totals 100 sherds (3kg), the largest deposits occurring in ditches [209] (877g) and [303] (700g), and pit [321] (925g). The assemblage is dominated by local sandy coarse wares, including products from the Horningsea kilns. Shelly wares, obtained from a range of more distant sources, also occur in smaller quantities. Other wares include products from the Lower Nene Valley and the Verulamium region. Continental imports are represented by four amphora sherds from southern Spain, and two sherds of Gaulish samian. Forms present are narrow-necked jars with simple everted rims, and a smaller number of straight-sided dishes, plain-rim bowls (some with burnished acute lattice decoration), beakers, flagons, and a large storage-type vessel.

<b>Fabric Group</b>	<b>Sherd No.</b>	<b>Wt. (g)</b>
Iron Age sand-tempered	4	55
Late Iron Age grog-tempered	8	96
Late Iron Age / early Roman sand-tempered	29	720
Amphorae	4	818
Samian ware	2	6
White wares	1	23
Horningsea wares	7	333
Oxidised sandy coarse wares	22	847
Reduced sandy coarse wares	16	157
Buff sandy coarse wares	2	22
Grey wares	31	470
Shelly wares	11	310
Nene Valley colour-coat	2	11
Roughcast colour-coat	2	22
<b>Total</b>	<b>141</b>	<b>3,890</b>

**Table 3:** Pottery type series

#### 2.4.2 Ceramic building material

Roman ditches [303] and [311] and pit [321] yielded two abraded pieces of sand-tempered roof tile (123g) and nine fragments of fired clay (117g). The latter occur in a buff sand and organic fabric *c.* 5–10mm thick, and most retain flattish, undulating finger-smoothed surfaces, suggesting that they represent lining material.

#### 2.4.3 Other Artefacts

Copper-alloy objects recovered from Roman possible quarry pit [215] are a damaged, crudely made stylus (RA1: Manning type 1, 1985), and a worn 4th-century Roman coin (RA3). A broken iron nail with a T-shaped head (Manning type 3) derived from the upper fill of pit [321]. Sieved sample residues from ditch [311] yielded a number of amorphous mortar fragments (288g).

#### 2.4.4 Ecofacts

A faunal assemblage totalling 163 fragments (5kg) was collected from fifteen features across all trenches, the largest deposits (>1kg) from ditches [209] and [303]. Most other features contained less than 100g. Individual pieces survive in fair to good condition, with a mean weight of 31g. Identified species are cattle, sheep/goat, horse





and dog, and include both adult and immature animals. Diagnostic bone elements are mainly representative of post-cranial meat-bearing parts (limb bones, ribs and scapulae). However, the presence of vertebrae and cranial elements (loose teeth, horn cores and skull/mandible fragments) suggests butchery. A few complete bones survive (limb bones and astragalus). No pathologies were readily apparent.

Nineteen pieces of oyster shell (184g) derived from ditch [204], pits [215] and [321] and tree-throw [307].

## **2.5 Environmental Sampling**

Five samples of 10–20 litres were taken from a selection of features, comprising three ditches — [204], [311] and [509] — and two pits — [104] and [506]. The samples were processed in a flotation tank, fitted with a 1mm mesh, whilst a 300micron sieve was used to catch any flot. The samples were air-dried and the flots and residues were scanned by eye. Inspection of the residues indicated that none required re-floating, as they retained very little, if any, charred material.

### **2.5.1 Charred plant remains**

Occasional charred cereal grains were recovered from pit [104] and ditch [204] (Samples 1 and 2 respectively), with at most two cereal grains noted in two of the other three samples. The assemblages were very small and the preservation of the grains was variable, with several only existing as fragments. Given the volumes of material processed, the quantities of grain are very low. These quantities do not provide statistically meaningful assemblages for analysis.

### **2.5.2 Charcoal**

Pit [104] and ditch [204] (Samples 1 and 2 respectively) contained moderate quantities of charcoal, which mainly consisted of flecks and small flakes, with occasional, generally abraded small lumps. The other three samples only contained occasional charcoal flecks or very small abraded lumps.

The abrasion of the charcoal lumps indicates a degree of reworking of the material, whilst the number of flecks may indicate fragmentation. Given the small quantities present and the abraded nature of the small lumps of charcoal, this material has extremely limited potential to provide any information on the past environment and landscape of the area.

### **2.5.3 Other material**

Occasional small fragments of burnt bone were present in ditch [204] (Sample 2). Ditch [311] (Sample 3) contained fragments of fired clay with evidence of surface-smoothing, indicating that they had formed part of a structural lining. This deposit also contained small fragments of mortar. Occasional fragments of thermally fractured water-worn stone cobble were recovered from ditch [509] (Sample 5).



### 3. CONCLUSIONS

---

Evaluation of the eastern end of the development area has revealed the presence of late Iron Age and Roman remains. The density of features identified, and the size of the finds assemblages recovered from them (especially pottery and animal bone), suggest that the remains represent a former settlement or edge of settlement activity, which began in the late Iron Age and continued into the middle Roman period. The orientation of the ditches matches that observed during ongoing excavations by Albion Archaeology of a Roman settlement immediately to the south-east, suggesting that the remains identified are a continuation of that activity, though the pottery from this site is earlier; possibly indicating a shift over time.

Although occasional deep intrusions associated with the former dairy are likely to have destroyed some of the remains that were once present in this part of the development site, the trenches have revealed relatively good overall preservation of archaeological remains within the eastern part of the site. Initial results suggest that environmental sampling has low potential to inform on the site's arable economy, through the presence of charred plant remains.



#### 4. BIBLIOGRAPHY

---

Albion Archaeology 2017a: *Former Dairy Crest Site, Fenstanton, Cambridgeshire: Written Scheme of Investigation for Archaeological Evaluation* (unpublished report 2017/40)

Albion Archaeology 2017b: *Former Dairy Crest Site, Fenstanton, Cambridgeshire: Archaeological Monitoring of Geotechnical Test Pits* (unpublished report 2017/163)

HET 2017: *Brief for Archaeological Evaluation, Former Dairy Crest Site, High Street, Fenstanton*, February 10, 2017

Manning, W.H. 1985: *Catalogue of the Romano-British Iron Tools, Fittings and Weapons in the British Museum* (London)



## 5. APPENDIX 1: TRENCH SUMMARIES

---

**Trench: 1**

**Max Dimensions:** Length: 12.25 m. Width: 2.40 m. Depth to Archaeology Min: 0.75 m. Max: 0.8 m.

**Co-ordinates:** OS Grid Ref.: TL (Easting: 31764; Northing: 68272)

OS Grid Ref.: TL (Easting: 31762; Northing: 68260)

**Reason:** Assess archaeological potential

Context:	Type:	Description:	Excavated:	Finds Present:
100	Make up layer	Loose mid yellow grey sandy gravel frequent small-large concrete Modern carpark construction. 0.4m thick	<input checked="" type="checkbox"/>	<input type="checkbox"/>
101	Buried topsoil	Firm dark brown grey silty clay occasional small stones 0.05m thick	<input checked="" type="checkbox"/>	<input type="checkbox"/>
102	Subsoil	Friable mid orange brown sandy silt moderate small stones 0.35m thick	<input checked="" type="checkbox"/>	<input type="checkbox"/>
103	Natural	Compact mid brown orange sandy silt moderate small-medium stones Light yellow sand and yellow brown clay lenses	<input type="checkbox"/>	<input type="checkbox"/>
104	Pit	Circular sides: steep base: concave dimensions: max breadth 1.29m, max depth 0.38m, max length 0.57m	<input checked="" type="checkbox"/>	<input type="checkbox"/>
105	Lower fill	Friable mid brown grey clay silt 0.13m thick	<input checked="" type="checkbox"/>	<input checked="" type="checkbox"/>
106	Fill	Friable black sandy silt frequent flecks charcoal 0.05m thick	<input checked="" type="checkbox"/>	<input type="checkbox"/>
107	Upper fill	Friable mid brown grey clay silt 0.21m thick. Sample <1> taken from this deposit.	<input checked="" type="checkbox"/>	<input type="checkbox"/>
108	Postpipe	Circular sides: vertical base: concave dimensions: max depth 0.11m, max diameter 0.16m Postpipe of posthole [122]	<input checked="" type="checkbox"/>	<input type="checkbox"/>
109	Fill	Friable dark brown grey clay silt	<input checked="" type="checkbox"/>	<input type="checkbox"/>
110	Ditch	Linear NW-SE sides: 45 degrees base: v-shaped dimensions: max breadth 1.47m, max depth 0.61m, max length 2.8m	<input checked="" type="checkbox"/>	<input type="checkbox"/>
111	Lower fill	Firm mid orange brown clay silt moderate small-medium stones 0.27m thick	<input checked="" type="checkbox"/>	<input checked="" type="checkbox"/>
112	Fill	Friable dark grey brown clay silt occasional small stones 0.15m thick	<input checked="" type="checkbox"/>	<input checked="" type="checkbox"/>
113	Upper fill	Firm mid orange brown clay silt occasional small stones 0.19m thick	<input checked="" type="checkbox"/>	<input type="checkbox"/>
114	Ditch	Linear NW-SE sides: 45 degrees base: flat dimensions: max breadth 1.62m, max depth 1.04m, max length 2.5m Truncated by ditch [117]	<input checked="" type="checkbox"/>	<input type="checkbox"/>
115	Lower fill	Compact mid yellow brown silty clay occasional flecks charcoal, occasional small stones 0.2m thick	<input checked="" type="checkbox"/>	<input checked="" type="checkbox"/>
116	Main fill	Firm mid orange brown clay silt occasional flecks charcoal, occasional small stones 0.48m thick	<input checked="" type="checkbox"/>	<input checked="" type="checkbox"/>
117	Ditch	Linear NW-SE sides: 45 degrees base: v-shaped dimensions: max breadth 1.98m, max depth 0.83m, max length 2.5m Truncates ditch [114]	<input checked="" type="checkbox"/>	<input type="checkbox"/>
118	Main fill	Compact mid green blue clay silt occasional flecks charcoal, occasional small-medium stones 0.44m thick	<input checked="" type="checkbox"/>	<input checked="" type="checkbox"/>
119	Fill	Friable dark grey brown sandy silt 0.32m thick	<input checked="" type="checkbox"/>	<input type="checkbox"/>
120	Fill	Compact mid brown orange silty clay 0.07m thick	<input checked="" type="checkbox"/>	<input type="checkbox"/>
121	Fill	Firm mid brown grey clay silt 0.18m thick	<input checked="" type="checkbox"/>	<input checked="" type="checkbox"/>
122	Posthole	Circular sides: near vertical base: concave dimensions: max depth 0.16m, max diameter 0.41m Contains postpipe [108]	<input checked="" type="checkbox"/>	<input type="checkbox"/>
123	Backfill	Compact mid yellow brown clay silt 0.1m thick	<input checked="" type="checkbox"/>	<input type="checkbox"/>
124	Backfill	Friable dark grey brown sandy silt 0.07m thick	<input checked="" type="checkbox"/>	<input type="checkbox"/>



Trench: 2

Max Dimensions: Length: 23.50 m. Width: 2.40 m. Depth to Archaeology Min: 0.8 m. Max: 0.85 m.

Co-ordinates: OS Grid Ref.: TL (Easting: 31752; Northing: 68227)

OS Grid Ref.: TL (Easting: 31741; Northing: 68246)

Reason: Assess archaeological potential

Context:	Type:	Description:	Excavated:	Finds Present:
200	Make up layer	Loose mid yellow grey sandy gravel frequent small-large concrete Modern carpark construction. 0.5m thick	<input checked="" type="checkbox"/>	<input type="checkbox"/>
201	Buried topsoil	Firm dark brown grey silty clay occasional small stones 0.15m thick	<input checked="" type="checkbox"/>	<input type="checkbox"/>
202	Subsoil	Friable mid orange brown sandy silt moderate small stones 0.2m thick	<input checked="" type="checkbox"/>	<input type="checkbox"/>
203	Natural	Compact mid brown orange sandy silt moderate small-medium stones Light yellow sand and yellow brown clay lenses	<input type="checkbox"/>	<input type="checkbox"/>
204	Ditch	Linear NE-SW sides: 45 degrees base: concave dimensions: max breadth 0.62m, max depth 0.19m, min length 3.m Truncates ditch [210]	<input checked="" type="checkbox"/>	<input type="checkbox"/>
205	Fill	Firm mid orange brown silty clay occasional small stones Sample <2> taken from this deposit.	<input checked="" type="checkbox"/>	<input checked="" type="checkbox"/>
206	Ditch	Linear E-W sides: steep base: concave dimensions: max breadth 0.37m, max depth 0.39m, max length 3.m Truncated by ditch [209]	<input checked="" type="checkbox"/>	<input type="checkbox"/>
207	Fill	Firm mid orange brown silty clay moderate small stones	<input checked="" type="checkbox"/>	<input checked="" type="checkbox"/>
209	Ditch	Linear E-W sides: asymmetrical base: concave dimensions: max breadth 1.09m, max depth 0.27m, max length 3.m Truncates ditch [206]	<input checked="" type="checkbox"/>	<input type="checkbox"/>
208	Fill	Firm dark grey brown silty clay moderate small stones	<input checked="" type="checkbox"/>	<input checked="" type="checkbox"/>
210	Ditch	Linear NE-SW sides: 45 degrees base: concave dimensions: max breadth 0.27m, max depth 0.11m, max length 3.m Truncated by ditch [204]	<input checked="" type="checkbox"/>	<input type="checkbox"/>
211	Fill	Firm mid orange brown silty clay occasional small stones	<input checked="" type="checkbox"/>	<input type="checkbox"/>
212	Quarry	Sub-circular sides: near vertical base: uneven dimensions: max breadth 0.26m, max depth 0.56m, min length 0.56m Truncated by pits [215] and [219]	<input checked="" type="checkbox"/>	<input type="checkbox"/>
213	Lower fill	Friable dark brown grey sandy clay moderate small stones 0.06m thick	<input checked="" type="checkbox"/>	<input type="checkbox"/>
214	Upper fill	Friable dark brown grey clay silt occasional flecks charcoal, occasional small stones 0.5m thick	<input checked="" type="checkbox"/>	<input checked="" type="checkbox"/>
215	Quarry	Sub-circular sides: near vertical base: concave dimensions: max depth 0.62m, max diameter 1.18m Truncates quarry pit [212]	<input checked="" type="checkbox"/>	<input type="checkbox"/>
216	Lower fill	Friable dark brown grey sandy clay moderate small stones 0.06m thick	<input checked="" type="checkbox"/>	<input type="checkbox"/>
217	Main fill	Friable dark brown grey clay silt occasional small stones 0.57m thick	<input checked="" type="checkbox"/>	<input checked="" type="checkbox"/>
218	Upper fill	Friable dark grey clay silt occasional small stones 0.14m thick	<input checked="" type="checkbox"/>	<input checked="" type="checkbox"/>
219	Pit	Sub-circular sides: concave base: flat dimensions: max depth 0.15m, max diameter 1.13m truncates quarry pit [212]	<input checked="" type="checkbox"/>	<input type="checkbox"/>
220	Fill	Friable mid grey brown clay silt occasional small stones Yellow orange sand lenses	<input checked="" type="checkbox"/>	<input type="checkbox"/>

**Trench: 3****Max Dimensions: Length: 30.50 m. Width: 2.40 m. Depth to Archaeology Min: 0.75 m. Max: 0.8 m.****Co-ordinates: OS Grid Ref.: TL** (Easting: 31721: Northing: 68284)**OS Grid Ref.: TL** (Easting: 31751: Northing: 68280)**Reason: Assess archaeological potential**

<b>Context:</b>	<b>Type:</b>	<b>Description:</b>	<b>Excavated:</b>	<b>Finds Present:</b>
300	Make up layer	Loose mid yellow grey sandy gravel frequent small-large concrete carpark construction 0.45m thick	<input checked="" type="checkbox"/>	<input type="checkbox"/>
301	Subsoil	Friable mid orange brown sandy silt moderate small stones 0.35m thick	<input checked="" type="checkbox"/>	<input type="checkbox"/>
302	Natural	Compact mid brown orange sandy silt moderate small-medium stones Light yellow sand and yellow brown clay lenses	<input type="checkbox"/>	<input type="checkbox"/>
303	Ditch	Linear NE-SW sides: 45 degrees base: uneven dimensions: max breadth 1.66m, max depth 0.62m, max length 3.m	<input checked="" type="checkbox"/>	<input type="checkbox"/>
304	Lower fill	Friable dark grey brown clay silt occasional flecks charcoal, frequent small stones 0.16m thick	<input checked="" type="checkbox"/>	<input type="checkbox"/>
305	Redeposited natural	Loose mid brown orange sandy gravel 0.09m thick	<input checked="" type="checkbox"/>	<input type="checkbox"/>
306	Main fill	Friable dark grey brown clay silt occasional flecks charcoal, frequent small stones 0.47m thick	<input checked="" type="checkbox"/>	<input checked="" type="checkbox"/>
307	Treethrow	Irregular sides: irregular base: concave dimensions: max breadth 0.61m, max depth 0.29m, max length 0.6m	<input checked="" type="checkbox"/>	<input type="checkbox"/>
308	Fill	Firm mid brown grey silty clay	<input checked="" type="checkbox"/>	<input checked="" type="checkbox"/>
309	Posthole	Circular sides: near vertical base: concave dimensions: max depth 0.13m, max diameter 0.25m Truncated by ditch [311]	<input checked="" type="checkbox"/>	<input type="checkbox"/>
310	Fill	Plastic mid orange red clay	<input checked="" type="checkbox"/>	<input type="checkbox"/>
311	Ditch	Linear N-S sides: concave base: concave dimensions: max breadth 0.73m, max depth 0.38m, max length 1.2m Truncated posthole [309]	<input checked="" type="checkbox"/>	<input type="checkbox"/>
312	Redeposited natural	Plastic mid orange red clay 0.11m thick	<input checked="" type="checkbox"/>	<input type="checkbox"/>
313	Redeposited natural	Plastic mid orange red clay 0.07m thick	<input checked="" type="checkbox"/>	<input type="checkbox"/>
314	Lower fill	Friable light brown grey silty ash frequent flecks charcoal, frequent flecks fired clay 0.06m thick	<input checked="" type="checkbox"/>	<input type="checkbox"/>
315	Fill	Cemented mid orange red sandy silt 0.03m thick	<input checked="" type="checkbox"/>	<input type="checkbox"/>
316	Main fill	Friable light brown grey silty ash frequent flecks charcoal, frequent flecks fired clay 0.18m thick. Sample <3> taken from this deposit.	<input checked="" type="checkbox"/>	<input checked="" type="checkbox"/>
317	Upper fill	Friable dark grey silt frequent flecks charcoal 0.14m thick	<input checked="" type="checkbox"/>	<input type="checkbox"/>
319	Pit	Circular sides: concave base: concave dimensions: max breadth 0.91m, max depth 0.36m, max length 0.6m	<input checked="" type="checkbox"/>	<input type="checkbox"/>
320	Fill	Firm dark grey brown clay silt moderate small-medium stones	<input checked="" type="checkbox"/>	<input checked="" type="checkbox"/>
321	Pit	Oval sides: concave base: concave dimensions: max breadth 0.92m, max depth 0.67m, max length 2.2m	<input checked="" type="checkbox"/>	<input type="checkbox"/>
322	Primary fill	Firm mid blue grey silty clay occasional small stones 0.25m thick	<input checked="" type="checkbox"/>	<input type="checkbox"/>
323	Main fill	Firm dark grey brown clay silt moderate small-medium stones 0.67m thick	<input checked="" type="checkbox"/>	<input checked="" type="checkbox"/>

**Trench: 4****Max Dimensions:** Length: 22.50 m. Width: 2.40 m. Depth to Archaeology Min: 0.85 m. Max: 1. m.**Co-ordinates:** OS Grid Ref.: TL (Easting: 31720: Northing: 68269)

OS Grid Ref.: TL (Easting: 31702: Northing: 68254)

**Reason:** Assess archaeological potential

Context:	Type:	Description:	Excavated:	Finds Present:
400	Make up layer	Loose mid yellow grey sandy gravel frequent small-large concrete Modern carpark construction 0.45m thick	<input checked="" type="checkbox"/>	<input type="checkbox"/>
401	Buried topsoil	Firm dark brown grey silty clay occasional small stones 0.2m thick	<input checked="" type="checkbox"/>	<input type="checkbox"/>
402	Subsoil	Friable mid orange brown sandy silt moderate small stones 0.35m thick	<input checked="" type="checkbox"/>	<input type="checkbox"/>
403	Natural	Compact mid brown orange sandy silt moderate small-medium stones Light yellow sand and yellow brown clay lenses	<input checked="" type="checkbox"/>	<input type="checkbox"/>
404	Ditch	Linear NW-SE sides: 45 degrees base: flat dimensions: max breadth 1.34m, max depth 0.65m, max length 3.m Truncated by ditches [406] and [409]	<input checked="" type="checkbox"/>	<input type="checkbox"/>
405	Fill	Compact mid yellow brown clay silt occasional small stones	<input checked="" type="checkbox"/>	<input type="checkbox"/>
406	Ditch	Linear NW-SE sides: 45 degrees base: v-shaped dimensions: max breadth 2.08m, max depth 0.9m, max length 3.m Truncates ditch [404]	<input checked="" type="checkbox"/>	<input type="checkbox"/>
407	Lower fill	Compact mid yellow brown clay silt occasional small-medium stones 0.38m thick	<input checked="" type="checkbox"/>	<input type="checkbox"/>
408	Upper fill	Compact mid blue brown clay silt occasional flecks charcoal, occasional small-medium stones 0.52m thick	<input checked="" type="checkbox"/>	<input checked="" type="checkbox"/>
409	Ditch	Linear NW-SE sides: steep base: concave dimensions: max breadth 1.8m, max depth 0.76m, max length 3.m Truncates ditch [404]	<input checked="" type="checkbox"/>	<input type="checkbox"/>
410	Primary fill	Compact mid yellow brown clay silt occasional small-medium stones 0.35m thick	<input checked="" type="checkbox"/>	<input type="checkbox"/>
411	Lower fill	Firm brown grey clay silt moderate small stones 0.31m thick	<input checked="" type="checkbox"/>	<input type="checkbox"/>
412	Upper fill	Firm mid grey brown clay silt moderate small-medium stones 0.46m thick	<input checked="" type="checkbox"/>	<input checked="" type="checkbox"/>
413	Ditch	Linear N-S sides: steep base: concave dimensions: max breadth 0.27m, max depth 0.11m, max length 0.53m	<input checked="" type="checkbox"/>	<input type="checkbox"/>
414	Fill	Friable dark brown grey sandy silt	<input checked="" type="checkbox"/>	<input checked="" type="checkbox"/>
415	Ditch	Linear NW-SE sides: steep base: concave dimensions: max breadth 0.75m, max depth 0.33m, max length 1.5m Truncated by ditch [421] and pit [425]	<input checked="" type="checkbox"/>	<input type="checkbox"/>
416	Primary fill	Friable mid grey brown silty sand occasional small stones 0.09m thick	<input checked="" type="checkbox"/>	<input type="checkbox"/>
417	Lower fill	Friable mid grey brown silty sand moderate small stones 0.24m thick	<input checked="" type="checkbox"/>	<input checked="" type="checkbox"/>
418	Upper fill	Firm mid orange grey clay silt 0.11m thick	<input checked="" type="checkbox"/>	<input type="checkbox"/>
419	Pit	Sub-rectangular sides: concave base: concave dimensions: max breadth 0.4m, max depth 0.26m, max length 0.75m Truncated by ditch [421]	<input checked="" type="checkbox"/>	<input type="checkbox"/>
420	Fill	Firm mid blue brown silty clay occasional flecks charcoal	<input checked="" type="checkbox"/>	<input type="checkbox"/>
421	Ditch	Linear NW-SE sides: near vertical base: flat dimensions: max breadth 1.09m, max depth 0.75m, max length 3.5m Truncates ditch [415] and pit [419]; truncated by pit [425]	<input checked="" type="checkbox"/>	<input type="checkbox"/>
422	Lower fill	Firm mid brown orange sandy silt moderate small stones 0.14m thick	<input checked="" type="checkbox"/>	<input type="checkbox"/>
423	Main fill	Firm mid orange brown sandy silt occasional flecks charcoal, occasional small-medium stones 0.47m thick	<input checked="" type="checkbox"/>	<input checked="" type="checkbox"/>
424	Upper fill	Friable mid grey brown sandy silt 0.29m thick	<input checked="" type="checkbox"/>	<input type="checkbox"/>
425	Pit	Circular sides: steep base: concave dimensions: max breadth 0.32m, max depth 0.75m, max length 1.06m Truncated ditch [421]	<input checked="" type="checkbox"/>	<input type="checkbox"/>





**Trench: 4**

**Max Dimensions:** Length: 22.50 m. Width: 2.40 m. Depth to Archaeology Min: 0.85 m. Max: 1. m.

**Co-ordinates:** OS Grid Ref.: TL (Easting: 31720: Northing: 68269)

OS Grid Ref.: TL (Easting: 31702: Northing: 68254)

**Reason:** Assess archaeological potential

Context:	Type:	Description:	Excavated:	Finds Present:
426	Lower fill	Firm mid brown orange sandy silt moderate small stones 0.37m thick	<input checked="" type="checkbox"/>	<input type="checkbox"/>
427	Upper fill	Firm dark brown grey sandy silt occasional flecks charcoal, occasional small-medium stones 0.38m thick	<input checked="" type="checkbox"/>	<input type="checkbox"/>



**Trench: 5**

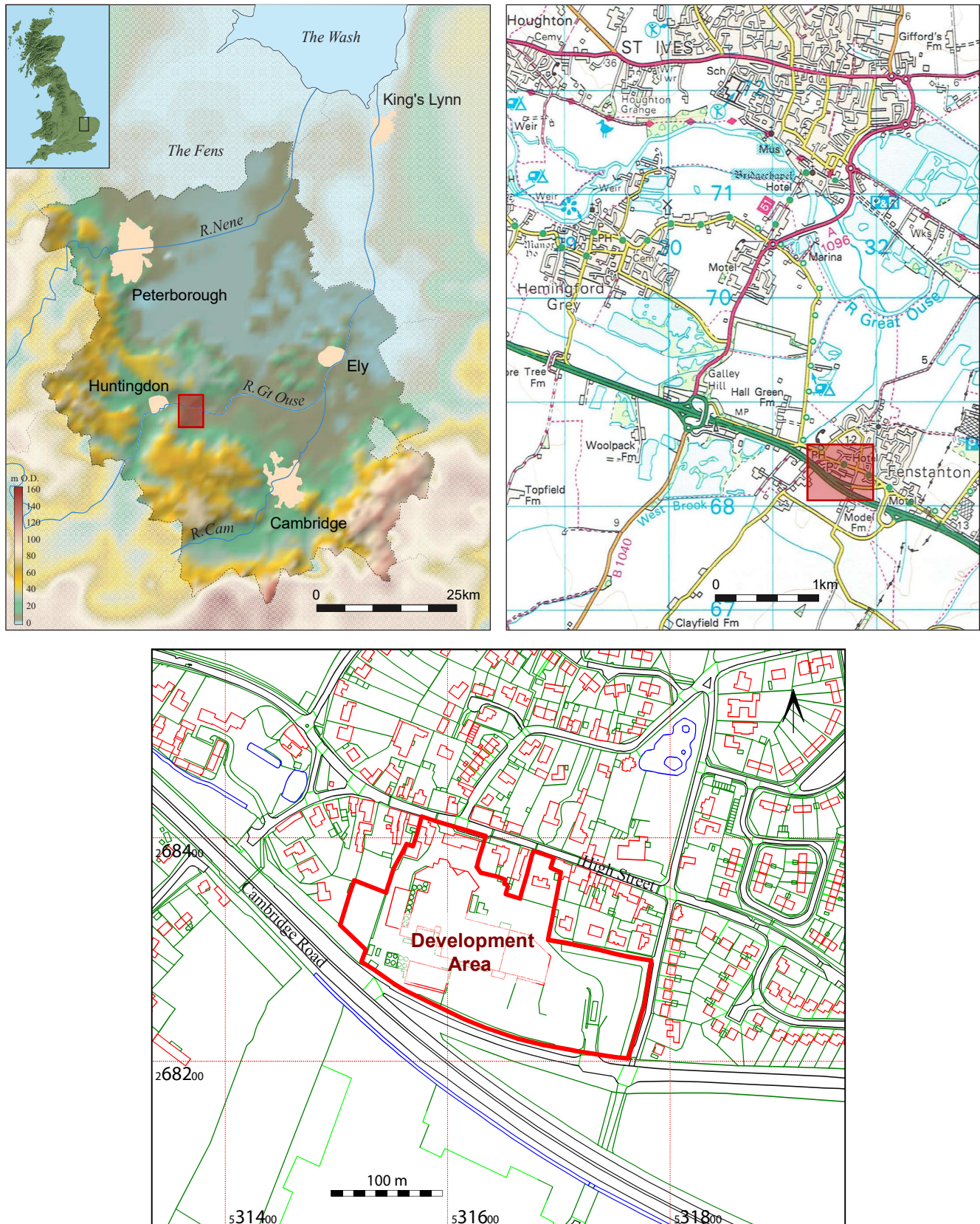
**Max Dimensions:** Length: 23.70 m. Width: 2.40 m. Depth to Archaeology Min: 1. m. Max: 1. m.

**Co-ordinates:** OS Grid Ref.: TL (Easting: 31685: Northing: 68229)

OS Grid Ref.: TL (Easting: 31707: Northing: 68222)

**Reason:** Assess archaeological potential

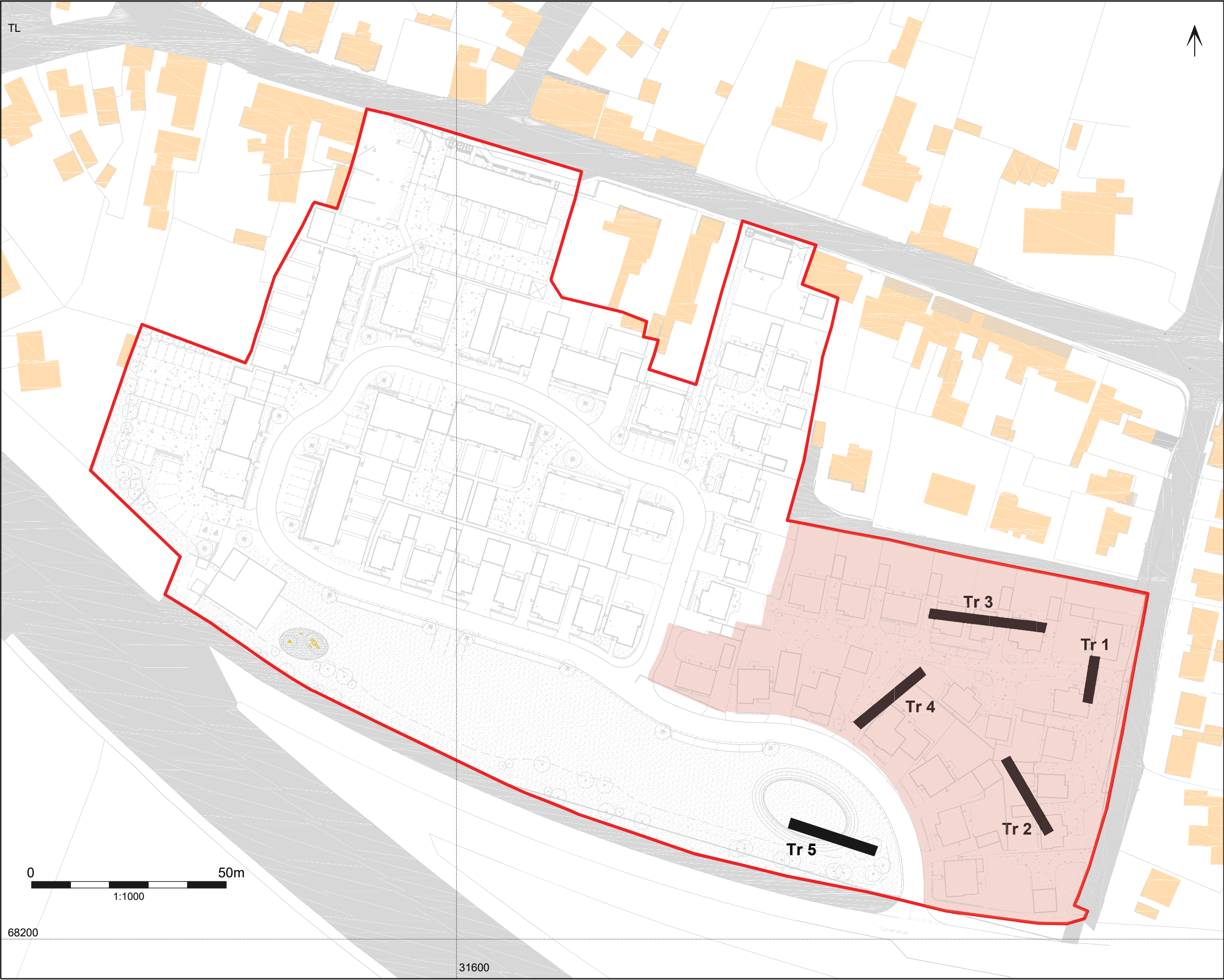
Context:	Type:	Description:	Excavated:	Finds Present:
500	Make up layer	Loose mid yellow grey sandy gravel frequent small-large concrete Modern carpark construction. 0.5m thick	<input checked="" type="checkbox"/>	<input type="checkbox"/>
501	Buried topsoil	Firm dark brown grey silty clay occasional small stones 0.2m thick	<input checked="" type="checkbox"/>	<input type="checkbox"/>
502	Subsoil	Friable mid orange brown sandy silt moderate small stones 0.3m thick	<input checked="" type="checkbox"/>	<input type="checkbox"/>
503	Natural	Compact mid brown orange sandy silt moderate small-medium stones Light yellow sand and yellow brown clay lenses	<input type="checkbox"/>	<input type="checkbox"/>
504	Ditch	Linear NE-SW sides: 45 degrees base: concave dimensions: max breadth 0.27m, max depth 0.13m, max length 2.8m	<input checked="" type="checkbox"/>	<input type="checkbox"/>
505	Fill	Friable dark grey brown sandy silt occasional small stones	<input checked="" type="checkbox"/>	<input type="checkbox"/>
506	Pit	Sub-circular sides: steep base: uneven dimensions: max breadth 0.75m, max depth 0.37m, max length 1.04m	<input checked="" type="checkbox"/>	<input type="checkbox"/>
507	Primary fill	Firm mid brown orange silt occasional small stones 0.1m thick	<input checked="" type="checkbox"/>	<input type="checkbox"/>
508	Main fill	Firm mid grey brown sandy silt occasional small stones 0.35m thick. Sample <4> taken from this deposit.	<input checked="" type="checkbox"/>	<input type="checkbox"/>
509	Ditch	Linear NW-SE sides: 45 degrees base: concave dimensions: max breadth 1.15m, max depth 0.65m, max length 5.m	<input checked="" type="checkbox"/>	<input type="checkbox"/>
510	Primary fill	Firm mid grey brown sandy silt moderate small stones Yellow orange silty sand lenses 0.19m thick. Sample <5> taken from this deposit.	<input checked="" type="checkbox"/>	<input checked="" type="checkbox"/>
511	Main fill	Firm mid grey brown sandy silt occasional small stones 0.56m thick	<input checked="" type="checkbox"/>	<input checked="" type="checkbox"/>
512	Ditch	Linear NW-SE sides: concave base: concave dimensions: max breadth 0.72m, max depth 0.31m, max length 5.m Appears to be truncated by grave [514]	<input checked="" type="checkbox"/>	<input type="checkbox"/>
513	Fill	Firm mid brown sandy silt occasional small stones 0.31m thick	<input checked="" type="checkbox"/>	<input type="checkbox"/>
514	Grave	Sub-rectangular NW-SE sides: near vertical dimensions: max breadth 1.m, max length 2.m Appears to truncate ditch [512]. Not excavated to base 1/11/17	<input checked="" type="checkbox"/>	<input type="checkbox"/>
515	Fill	Compact mid brown grey clay silt Human skeleton has not been excavated at this time 1/11/17	<input checked="" type="checkbox"/>	<input checked="" type="checkbox"/>



**Figure 1: Site location**

This map is based upon Ordnance Survey material with the permission of Ordnance Survey on behalf of the Controller of Her Majesty's Stationery Office © Crown Copyright. Unauthorised reproduction infringes Crown Copyright and may lead to prosecution or civil proceedings. Central Bedfordshire Council. Licence No. 100049029 (2011)





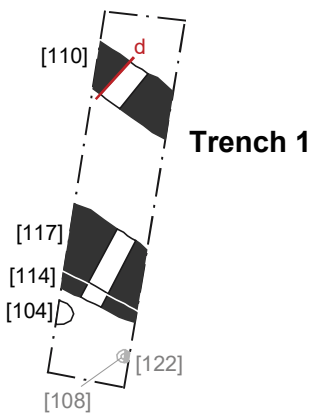
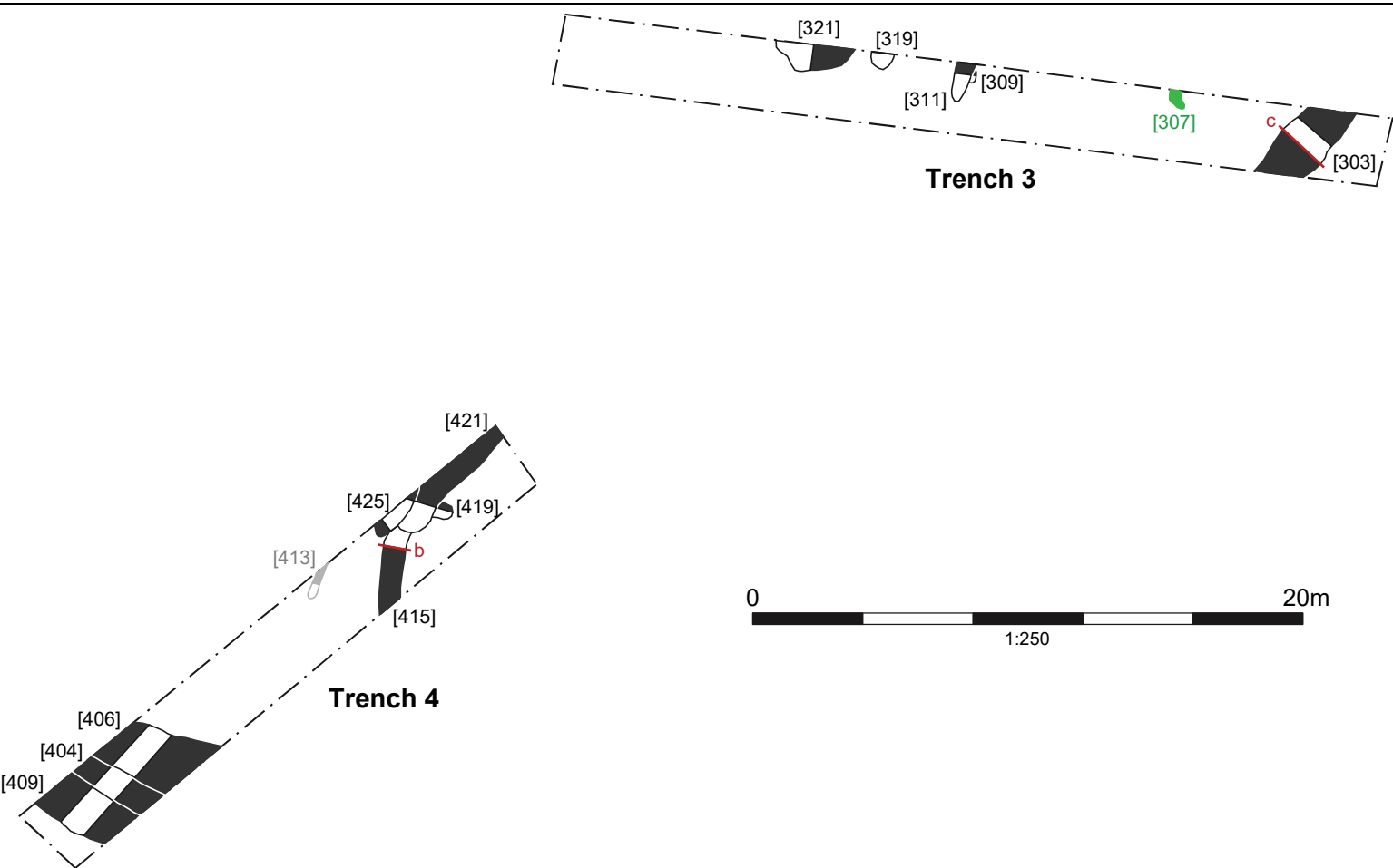
- Development area
- Extent of Development Phase 1

**Figure 2:**  
Location of trial trenches

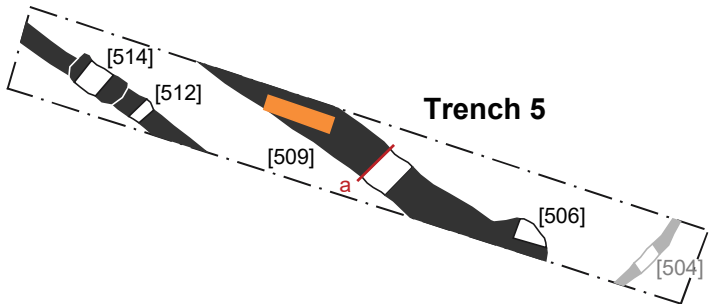




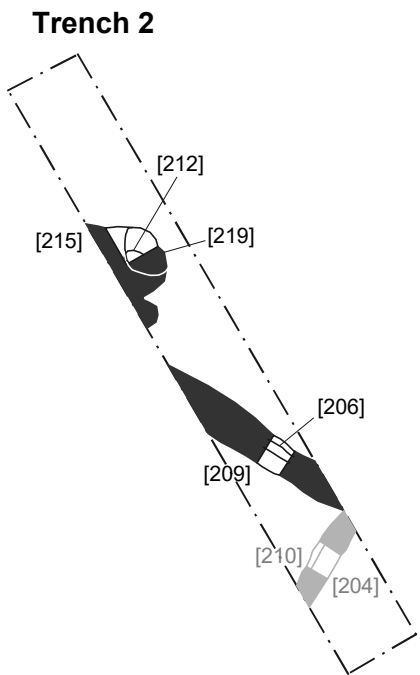
**Photograph 1:** Trench 4, looking SW.  
Scale 1m



- KEY**
- Archaeological feature: late Iron Age / Roman
  - Archaeological feature: undated
  - Tree-throw
  - Geotechnical test pit
  - Excavated segment
  - Unexcavated segment
  - a Section drawing (see Fig. 4)



**Photograph 2:** Trench 5, looking east. Scale 1m



**Photograph 3:** Trench 2, looking NW.  
Scale 1m

**Figure 3:** Plan of all features and selected trench photographs





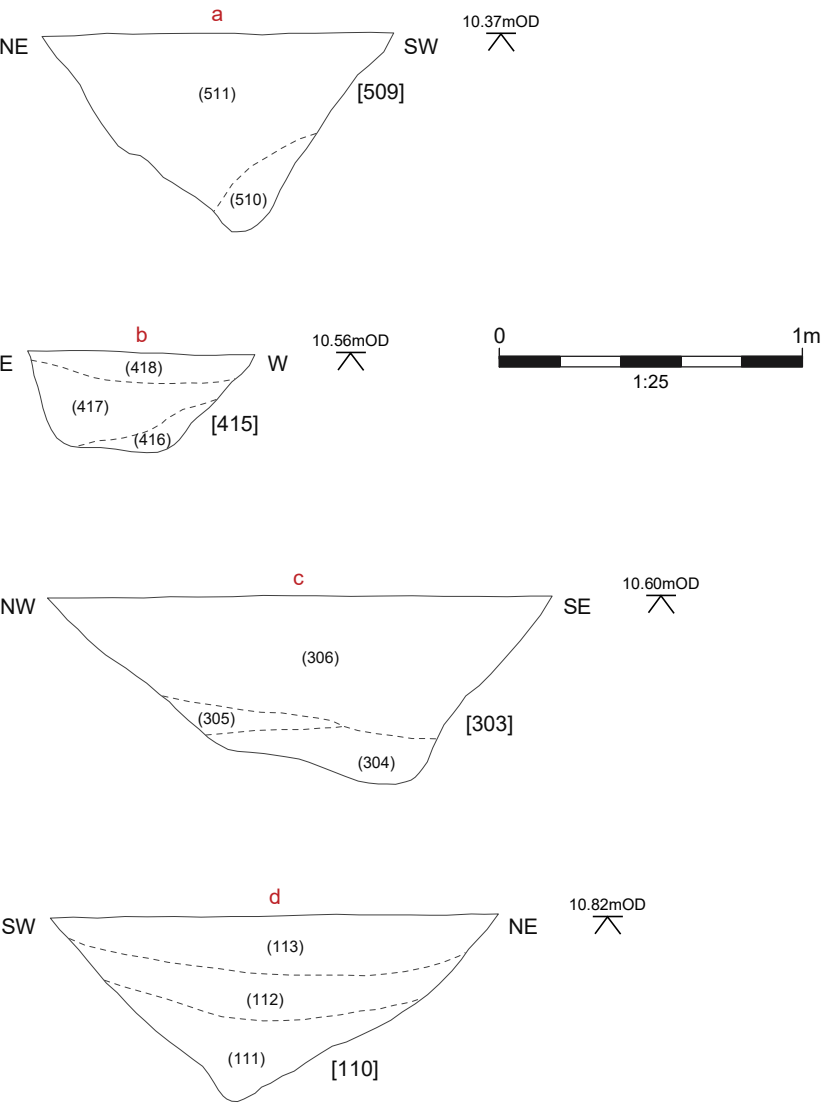
**Photograph 4:** Ditches [406], [404] and [409], looking SE.  
Scale 1m



**Photograph 5:** Ditch [311], looking north.  
Scale 0.4m



**Photograph 6:** Pits [212], [215] and [219], looking SW.  
Scale 1m



**Photograph 7:** Ditch [206] and re-cut [209], looking NW.  
Scale 1m



**Photograph 8:** Ditch [114] and re-cut [117], looking SE.  
Scale 1m

**Figure 4:** Selected photographs and section drawings



**Central  
Bedfordshire**

**Albion**  
archaeology



Albion Archaeology  
St Mary's Church  
St Mary's Street  
Bedford  
MK42 0AS

**Telephone** 01234 294000  
**Email** [office@albion-arch.com](mailto:office@albion-arch.com)  
[www.albion-arch.com](http://www.albion-arch.com)

