



a) General view of Solids Area (view towards south west)



b) General view of Solids Area (view towards south)

**Plate 1**



a) General view of Solids Area (view towards east)



b) General view of Solids Area (view towards north)

**Plate 2**



a) Entrance to Solids Area (northern perimeter)



b) Entrance to Solids Area through administration block (eastern perimeter)

**Plate 3**



a) General view to show steam heating pipes



b) Steam heating pipes (SPA1/2 – administration block and canteen)



**Plate 5:** Flame- and spark-proof electrical fittings



a) Telephone system



b) Fire point

**Plate 6**



a) SPA21 (rocket motor magazine) metal-clad entry doors, external electrics, stand pipe, lightning protection



b) SPA21 (rocket motor magazine) lightning protection



a) MoW hut SPA25 (pyro section)



b) MoW hut detail of framing





a) MoW hut SPA30 (cordite and plastic propellant magazine)



b) MoW hut SPA30 (cordite and plastic propellant magazine) interior



a) MoW hut SPA18 (small rocket motor magazine)



b) MoW hut SPA34 (plastic propellant cutting and knives)



a) SPA1 Administration block



b) Shifting house (SPA1 administration)



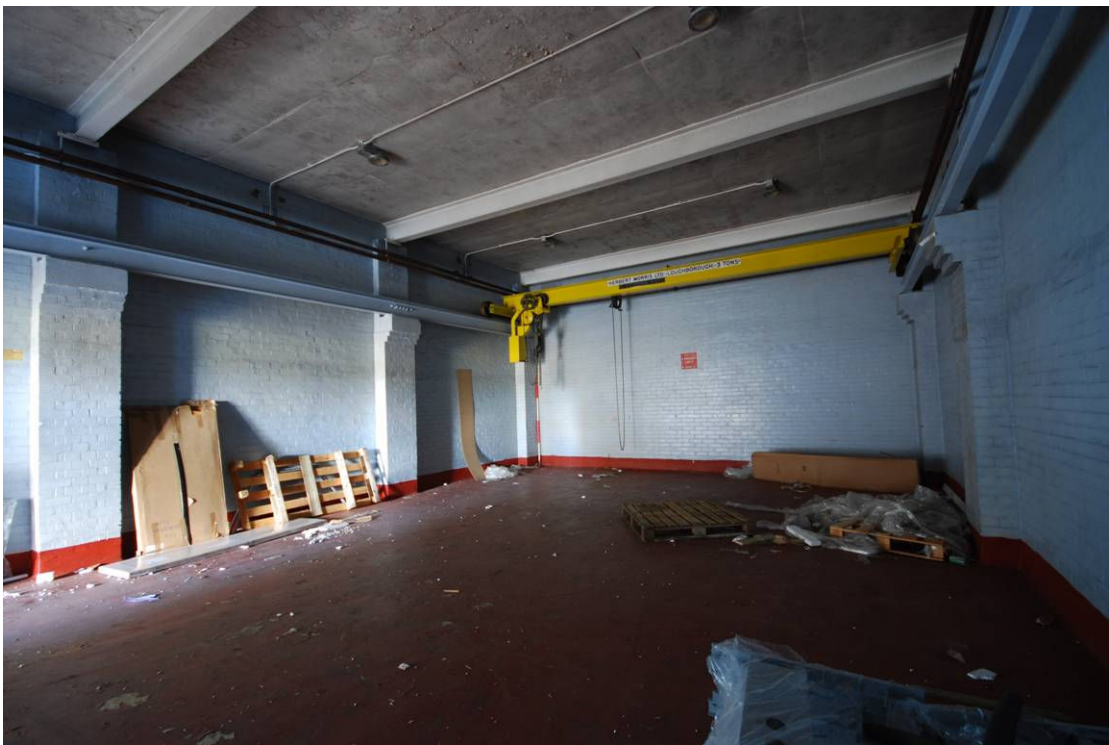
a) SPA20 (rocket motor magazine)



b) SPA20 (rocket motor magazine) view of entrance



a) SPA20 (rocket motor magazine) interior



b) SPA21 (rocket motor magazine) interior



a) SPA6 (cordite magazine)



b) SPA6 (cordite magazine) interior



a) SPA47 (long-term cycling magazine)



b) SPA47 (long-term cycling magazine)



a) SPA48 (pugmill)



b) SPA48 (pugmill) entrance through traverse





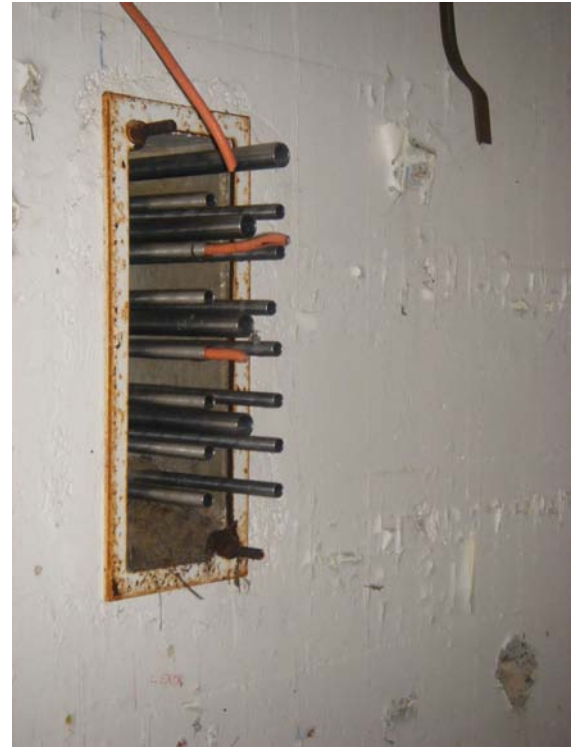
a) SPA48 (pugmill) interior



b) SPA48 (pugmill) interior



a) SPA48 (pugmill) interior of filling shed hydraulic hoist



b) SPA8 (pugmill) detail of cable ducts running from operations room to processing area



c) SPA8 (pugmill) interior, separate engine room



a) SPA9 (press)



b) SPA9 (press) interior



a) SPA14 (press)



b) SPA15 (press) building demolished, traverse and concrete blast walls remain



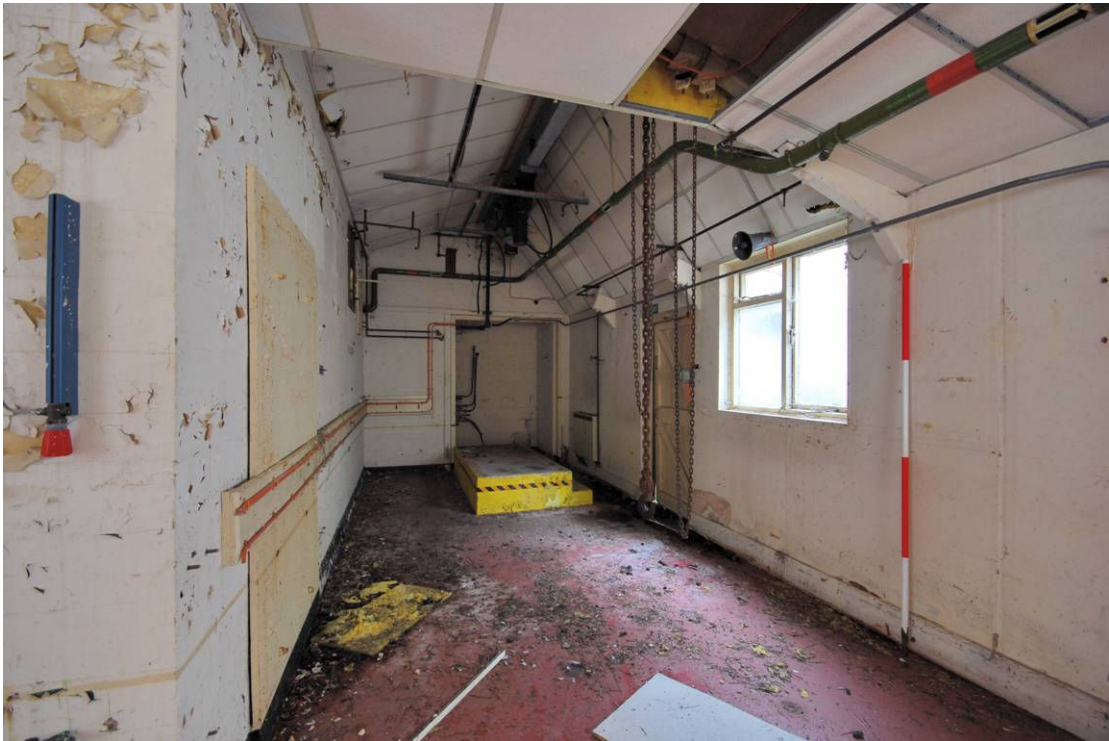
a) SPA7 (cordite/explosive processing)



b) SPA7 (cordite/explosive processing) interior



a) SPA12 (cutter) interior



b) SPA12 (cutter) interior



a) SPA12 (cutter) detail of observation window



b) SPA11 (cutter)



a) SPA34 (plastic propellant cutter and knives) interior



b) SPA42 (abrasive cutting)





a) SPA42(abrasive cutting) external detail showing protective walls



b) SPA42 (abrasive cutting) view into gable-end room



a) SPA36 (rocket motor tubes)



b) SPA36 (rocket motor tubes)  
interior, view of tower



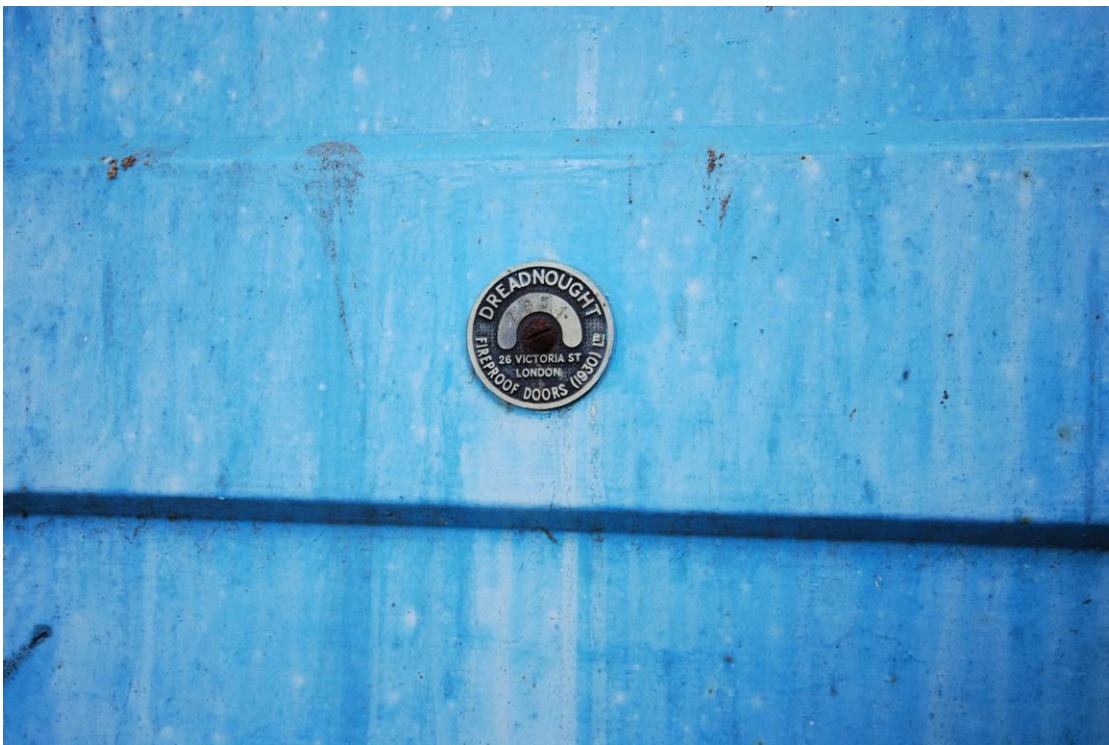
a) SPA37 (coating and tape winding)



b) SPA37 (coating and tape winding) interior, main compartment



a) SPA37 (coating and tape winding) interior



b) SPA37 (coating and tape winding) detail of fireproof doors



a) SPA38 (rocket motor assembly)



b) SPA38 (rocket motor assembly)  
interior



a) SPA33 (filling and pressing of small rocket motors)



b) SPA33 (filling and pressing of small rocket motors)



a) SPA51 (rocket assembly/pyrotechnics)



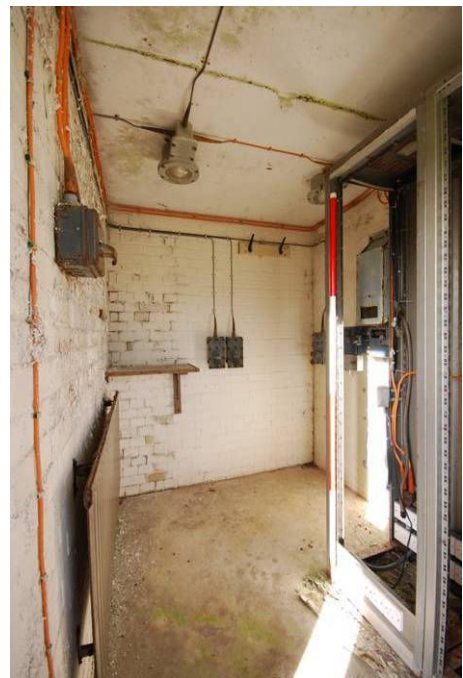
b) SPA41 (X-ray and ultrasound)



a) SPA45 (igniter testing)



b) SPA45 (igniter testing) interior



c) SPA45 (igniter testing) interior