

**STRATTON BUSINESS PARK - WESTERN AREA
BIGGLESWADE
BEDFORDSHIRE**

**ARCHAEOLOGICAL
FIELD EVALUATION**

Project: SW 1285

Document: 2007/83
Version 1.0

25th September 2007

Compiled by	Checked by	Approved by
Tracy Preece	Gary Edmondson	Drew Shottliff

Produced for:
Gazeley Properties Ltd
26 Rockingham Drive
Linford Wood
Milton Keynes
MK14 6PD

© Copyright Albion Archaeology 2007, *all rights reserved*



Contents

List of Tables	3
Appendices	3
List of Figures	3
List of Plates	3
Preface	4
Structure of the Report	4
Key Terms	4
Non-Technical Summary	5
1. INTRODUCTION	6
1.1 Background	6
1.2 Site Location and Description	6
2. ARCHAEOLOGICAL POTENTIAL OF THE AREA	7
2.1 Introduction	7
2.2 Known sites in the vicinity	7
2.3 Previous Archaeological Investigations	7
3. TRIAL EXCAVATION	8
3.1 Introduction	8
3.2 Methodology	8
3.3 Central Land Parcel	8
3.4 Western Land Parcel	11
3.5 Artefacts	14
3.6 Summary	15
4. CONCLUSION	17
4.1 Overview	17
4.2 Significance of the Archaeological Deposits	17
5. BIBLIOGRAPHY	18



List of Tables

Table 1: Summary of features in Central land parcel

Table 2: Summary of features in Western land parcel

Table 3: Artefact summary by trench and context

Table 4: Pottery Type Series

Table 5: Summary and characterisation of Archaeological Areas

Appendices

Appendix 1: Trenching strategy

Appendix 2: Trench summary

List of Figures

Figure 1: Site location map

Figure 2: Previously recorded archaeological remains

Figure 3: All features plan, showing Archaeological Areas

Figure 4: Central land parcel, Archaeological Area 1: Trenches 28 and 31

Figure 5: Western land parcel, Archaeological Area 3: Trenches 7, 8 and 21

Figure 6: Western land parcel; selected sections

Figure 7: Western land parcel, Archaeological Area 5: Trenches 1 - 4, 10, 13 and 14

Figure 8: Western land parcel; selected sections

List of Plates

Plate 1: Trench 28 – Archaeological Area 1: Ditch [2803]

Plate 2: Trench 21 – Archaeological Area 3: Ditch [2103] and [2107]

Plate 3: Trench 1 – Archaeological Area 5: Ditch [106]

Plate 4: Trench 13 – Archaeological Area 5: Ditch [1303]

Plate 5: Pottery sherds from Ditch [1303]

Plate 6: Pottery sherds from Pit [305]

All figures are bound at the back of the report.



Preface

Every effort has been made in the preparation of this document to provide as complete a summary as possible within the terms of the specification. All statements and opinions in this document are offered in good faith. Albion Archaeology cannot accept responsibility for errors of fact or opinion resulting from data supplied by a third party, or for any loss or other consequence arising from decisions or actions made upon the basis of facts or opinions expressed in this document.

This report has been prepared by Gary Edmondson (Project Manager), Tracy Preece (Project Officer), Adam Lodoen (Project Supervisor) and Jackie Wells (Artefacts Officer). The archaeological evaluation was undertaken by Tracy Preece, Helen Parslow, Richard Gregson, Adam Lodoen, Liz Davis and Gareth Shane. The project was under the overall management of Drew Shotliff (Operations Manager). Joan Lightning (CAD Technician) produced all the figures.

Albion Archaeology would like to acknowledge the assistance of Mr Don Morgan of Gazeley Properties Ltd, Mercedes Planas and the County Archaeological Officer, Lesley-Ann Mather.

*Albion Archaeology
St Mary's Church
St Mary's Street
Bedford, MK42 OAS
☎: 01234 294004
Fax: 01234 294008
e-mail: office@albion-arch.com*

Structure of the Report

After the introductory Section 1, the archaeological potential of the area is presented in Section 2. The results of the trial excavation are discussed in Section 3, followed by a brief conclusion (Section 4).

Key Terms

Throughout this report the following terms or abbreviations are used:

Albion	Albion Archaeology
Client	Gazeley Properties Ltd
GPS	Global Positioning System
IFA	Institute of Field Archaeologists
CAO	County Archaeological Officer
Procedures Manual	<i>Procedures Manual Volume 1 Fieldwork, 2nd Edition 2001.</i>



Non-Technical Summary

Albion Archaeology was commissioned by Gazeley Properties Ltd, to undertake the archaeological evaluation of approximately 11.4 hectares of land situated adjacent to Stratton Business Park, south of Biggleswade, Bedfordshire, centred on Ordnance Survey grid reference TL (5/2) 2092 4265. Topographically the site is situated on the western side of a low north-south ridge, at approximately 40m OD. The site is situated within an archaeologically sensitive location containing evidence of Iron Age and Roman occupation.

The trial excavation was undertaken between 22nd August and 7th September 2007, with contingency work on 14th September. A total of 29 trenches were opened, 10 within the Central land parcel and 19 within the Western land parcel. The results from an additional four trenches were incorporated from an earlier trial excavation. Of the 33 trenches, 27 contained archaeological remains.

In the Central land parcel, all of the trenches except one contained features comprising ditches, postholes and evidence of medieval agriculture. Two Archaeological Areas (AA1 and AA2) were defined comprising ditches which correspond to a previously recorded site visible as cropmarks (HER 13956), likely to represent a possible enclosure system (AA1). To the east and south of AA1, peripheral activity was identified that probably relates to an associated field system (AA2).

In the Western land parcel, a total of 29 ditches were identified along with associated pitting, some of which contained quantities of Iron Age pottery. Two concentrations of features were identified comprising a series of enclosures in the north-east (AA3) and an enclosure associated with settlement in the south-west (AA5). Several of the ditches correspond to the previously recorded cropmark site (HER 13956). The area between these contained sparse archaeological features, probably defining associated field systems (AA4).

The evaluation has confirmed the presence of archaeological features consisting of the well-preserved remains of Iron Age activity. These Iron Age remains probably represent a series of enclosures and a settlement area with peripheral activity likely to be an associated field system. Preservation of the archaeological remains across the site was generally good as indicated by the survival of features such as postholes and the depth of the features.

The site archive, which contains all records of the project (Project number SW 1285), is currently held at St Mary's Church. It will eventually be transferred to Bedford Museum, under Accession Number BEDFM 1991/218.

It is essential that the above summary is read in conjunction with the main body of the report.



1. INTRODUCTION

1.1 Background

Albion Archaeology was commissioned by Gazeley Properties Ltd to undertake the archaeological evaluation of approximately 11 hectares of land situated on the outskirts of Biggleswade, adjacent to Stratton Business Park, centred on grid reference TL (5/2) 2092 4265. The area being considered for the development is in an archaeologically sensitive location and following discussions with the Bedfordshire County Archaeological Officer (CAO), a *Method Statement* was prepared by Albion Archaeology for the archaeological work. It was approved by the CAO on 15th August 2007.

1.2 Site Location and Description

The area to be investigated is located immediately south of Biggleswade, adjacent to the existing Business Park to the north. To the west is the A1 trunk road, a tree belt is located to the south and the area to the east has been the subject of previous archaeological investigations. The site comprises two land parcels; referred to in this document as Central and Western (Figure 1).

Topographically the site lies on the western side of a low north-south ridge between a north flowing tributary and a series of westward flowing tributaries of the River Ivel. The area slopes gently down from the eastern edge at c.40m OD to c.38m OD in the vicinity of the A1 trunk road.

The superficial geology of the site consists of mixed glacial sands and gravels. At the time of the evaluation, the land parcels were no longer under cultivation, having reverted to scrub.



2. ARCHAEOLOGICAL POTENTIAL OF THE AREA

2.1 Introduction

To gain an indication of the archaeological potential of the landscape surrounding the area of investigation, an examination of known archaeological remains in the vicinity was undertaken.

2.2 Known sites in the vicinity

The Bedfordshire Historic Environment Record (HER) catalogues all known sites and historic buildings in the county. A total of five HER sites, all defined by cropmarks have been identified within or immediately adjacent to the area (**HER 13956, 16157, 16158, 16823 and 16824**) (Figure 2). **HER 13927** refers to the fieldname of Clay Pit indicating possible industrial activity and quarrying, while **HER 505** refers to a Roman road marked by the line of the A1 trunk road. Apart from elements of **HER 16157**, which have been dated by associated pottery to the Iron Age, the other sites are undated. Similar features that have been investigated in the Ivel valley are generally Iron Age or Roman in date. There is also evidence for medieval ridge and furrow cultivation.

2.3 Previous Archaeological Investigations

Albion undertook a non-intrusive survey of part of the area in 2002, which comprised desk-based assessment, field artefact collection and geophysical survey. The ground conditions limited the scope of this work with geophysical survey limited to the Central land parcel and field artefact collection restricted to the Western land parcel. The available historic maps and aerial photographs were examined and plotted (Albion 2003).

In 2003, the northern part of the Eastern land parcel, beyond the present Study Area, was the subject of trial excavation (Albion 2003), utilising the results of the non-intrusive survey. The southern part of this land parcel was subsequently investigated in 2005. Two areas of archaeological remains were identified. The most significant one contained a sequence of enclosures and parallel flanking trackway ditches identified in the non-intrusive stages of the evaluation (**HER 16157**). Associated artefacts indicated that these features dated to the early - middle (*c.*650-350BC) and later 'Belgic' Iron Age (*c.*100BC-AD100). Subsequent open area excavations revealed two settlements dating to the early-middle Iron Age and the late Iron Age-early Romano-British period (Edmondson and Preece in prep).

In 2004 parts of the northern and eastern margins of the current Study Area were the subject of trial excavation undertaken by Albion, on the line of a proposed access route Project SAR 1015 (Albion 2004). This identified two areas of significant archaeological remains, one in the north of this area, focused on Trenches 6-8. The western margin of the second area of significant archaeological remains extends into the south-eastern margin of the current area (Trench 5). Development plans for the site subsequently changed and the access route was revised.



3. TRIAL EXCAVATION

3.1 Introduction

The trial excavation strategy was approved by the CAO on 15th August 2007. A total of 29 trenches were opened, with a further four being incorporated from the earlier evaluation (Figure 3): a total of 33 trenches. The four trenches from the earlier evaluation were narrower, having been opened by a smaller machine. The objectives of the individual trenches are listed in Appendix 1. The evaluation was undertaken between 22nd August and 7th September 2007.

3.2 Methodology

- The trenches were opened using a 360 mechanical excavator fitted with a 2.5m toothless bucket. The operation of this machine was supervised by an experienced archaeologist;
- The trenches were set out using differential GPS to ensure accurate location;
- Overburden was removed by machine down to the top of the uppermost archaeological deposit or the undisturbed geological stratum, whichever, was encountered first;
- Each trench was issued a unique block of numbers for recording purposes;
- All spoil was scanned by eye for artefacts;
- Backfilling of the trenches only occurred after the CAO had inspected them.

All archaeological and geological deposits (contexts) were assigned an individual number in a single sequence, commencing at (100). Numbers in brackets within the text refer to the context number issued on site. Within this report context numbers referring to cut features are expressed [**], layers or deposits within cut features are expressed (**).

Each trench was issued with a unique block of numbers. For example (200) identifies ploughsoil in Trench 2 and [3103] identifies the construction cut for a ditch in Trench 31. Details of all contexts are listed in Appendix 2.

Of the 33 trial excavation trenches investigated, 27 contained archaeological features, defining five Archaeological Areas (AA1 – AA5 on Figure 3). The results of the evaluation will be discussed according to the Central and Western land parcels.

3.3 Central Land Parcel (Figure 3)

The 12 trenches comprise Trenches 24 to 33 and Trenches 5 and 6 from the previous investigation. Of these, only Trench 32 contained no archaeological remains. Within the other trenches a total of 31 features, predominantly ditches were identified (Table 1). From these, two Archaeological Areas (AA1 and AA2) have been defined, consisting of a possible enclosure (AA1) comprising Trenches 28, 30 and 31, which extends approximately 120m north-west to south-east by 80m. The second area (AA2) consists of Trenches 5, 6 and 24 to 27, 29 and 33 which contained sparse archaeological features including ditches and postholes defining a field system (AA2).



3.3.1 The Overburden

The uppermost layer in each of the trenches comprised a dark grey brown, silty clay ploughsoil, between 0.19m and 0.35m thick with moderate to frequent small-medium sized stones.

Below the ploughsoil was a mid orange brown clay silty subsoil, which was between 0.05m and 0.31m thick. The shallower subsoil deposits were situated in the trenches in the south-east part of the area.

No artefacts were recovered from either of these deposits.

3.3.2 Geological Stratum

The undisturbed geological stratum was very variable, ranging in colour from mid yellow to orange and in composition from sandy clay to silty gravel. At the northern end of Trench 32 it comprised large gravel and pebbles.

3.3.3 Archaeological Deposits

A total of 31 features were identified in this area, comprising:

Trench	Ditch	Pit	Posthole	Furrow	Treethrow	TOTAL
5	2	1	-	1	-	4
6	1	1	-	-	-	2
24	1	-	-	-	-	1
25	1	-	2	2	-	5
26	-	-	-	2	1	3
27	-	-	1	2	2	5
28	1	-	-	2	-	3
29	-	-	-	1	-	1
30	-	-	-	1	-	1
31	2	-	-	2	1	5
33	1	-	-	-	-	1
TOTAL	9	2	3	13	4	31

Table 1: Summary of features in Central land parcel

Furrows

A series of regularly spaced linear features aligned north-east to south-west and spaced *c.* 10m apart were identified in eight of the trenches within the Central land parcel. They had wide shallow profiles compared to the ditches and were no more than 0.21m deep with light, naturally derived infilling deposits. Their form suggests that they are the traces of the furrows of ridge and furrow cultivation, typically medieval in date.

3.3.4 Archaeological Area 1 (Figure 3 - yellow area AA1 and Figure 4)

Ditches

Three ditches were identified in Trenches 28 and 31. Of these, east to west aligned ditch [2803] (Plate 1) and north-east to south-west ditch [3103/3113] appear to correspond to cropmarks, though with an apparent east-west displacement of *c.* 6m. Ditch [3103/3113] changed from a wide shallow concave profile in the north 0.32m deep (Figure 4: Section 1) to a steeper profile at least 0.45m deep in the south [3113]. Ditch [3115] was aligned north-west to south-east. The ditches were between 1.6m and 3.2m wide and up to 0.52m deep with asymmetrical concave profiles.



The ditches in Trench 31 were infilled with mid grey brown silty clay that contained occasional small stones, fragments of brick and tile and two iron nails. Ditch [2803] was infilled with a sequence of deposits ranging from naturally derived primary fills overlain by darker upper deposits indicating that it was probably exposed for a longer period of time (Figure 4: Section 2). Finds comprised a small quantity of animal bone from the upper deposits.

3.3.5 Archaeological Area 2 (Figure 3 – light blue area AA2)

Ditches

A total of six ditches were located within the trenches on the periphery of the AA1. Three of these, in Trenches 6, 24 and 25 were aligned north-west to south-east. Two of the ditches [605] and [2403] were between 0.8m and 1.15m wide and up to 0.38m deep. Ditch [2507] was slightly smaller, being only 0.55m wide and 0.29m deep.

A further three ditches were identified to the east of the AA1. In Trench 33, ditch [3303] was aligned roughly east to west and was 2.6m wide and 0.44m deep, while in Trench 5, two closely spaced east to west aligned ditches, [503] and [505] were between 0.7m and 1.2m wide. The excavated ditch was 0.2m deep with a concave profile.

With the exception of a relatively stony primary fill in ditch [605], they were infilled with a sterile mid yellow grey/orange brown silty clay that appears to have accumulated naturally, being derived from erosion of the lower soil profile. The fill of ditch [2403] was sampled due to the presence of snail shells. Processing of this deposit recovered frequent snail shells as well as a small quantity of charcoal. This material has the potential to provide limited information on the environment and land use of the area.

Pits

Trenches 5 and 6 each contained a pit either oval or sub-circular in plan. They varied in length from 0.35m to 2.50m, with generally steep sided profiles, up to 0.4m deep. Pit [603] truncated ditch [605]. Pit [507] was located to the north of the ditches and was 0.6m in diameter and 0.15m deep. Both of the pits were infilled with a single sterile deposit that contained no artefacts.

Postholes

Three oval postholes were located in Trenches 25 and 27 and were between 0.4m and 0.7m in diameter. The excavated posthole was 0.11m deep with near vertical sides and a concave base. They seemed to be orientated in a row approximately north-east to south-west and may form part of a field boundary or fenceline. All of the postholes were infilled with a single naturally derived deposit that contained no artefacts.

Treethrows

Trenches 26, 27 and 31 contained a total of four treethrows. They were irregular/sub-oval in plan, between 0.85m and 2.2m long and 0.58m and 1.4m wide. Treethrows are created when a tree is uprooted, either through natural or human processes.



3.4 Western Land Parcel (Figure 3)

The 21 trenches comprise Trenches 1 to 4 and 7 to 23. Of these, Trenches 11, 12, 17, 19 and 22 contained no archaeological remains. In the remainder of the trenches, a total of 47 features were identified. From these, three Archaeological Areas (AA3 – AA5) have been identified. In the north-east AA3 encompasses Trenches 7, 8 and 21, defining an area of enclosures which extend over an area of at least 100m by 60m. Trenches 1, 2, 3, 4, 10, 13 and 14 define AA5 in the south-west, a settlement focus defined by a substantial enclosure, extending approximately 190m east to west by 130m north to south. Located between these two areas is AA4, comprising Trenches 9, 15, 16 and 18 which contained a lesser concentration of features, defining a field system. Areas of modern disturbance were identified close to the western margin of the land parcel in Trenches 2 and 11 (red areas on Figure 3).

3.4.1 The Overburden

The uppermost layer in each of the trenches consisted of a dark grey brown, silty clay ploughsoil. This deposit was between 0.22m and 0.45m thick, indicating that it was the product of agricultural cultivation.

Below the ploughsoil was a firm, mid orange/red brown, silty clay subsoil, between 0.08m and 0.4m thick. No artefacts were recovered from either of these deposits.

3.4.2 Geological Stratum

The undisturbed geological stratum was very variable, consisting in most places of yellow orange sandy clay or coarse white yellow gravel with variable amounts of small to medium sized stones.

3.4.3 Archaeological Deposits

A total of 47 features were identified in this area, comprising:

Trench	Ditch	Pit	Furrow	Treethrow	TOTAL
1	3	-	-	-	3
2	1	1	-	1	3
3	1	1	-	-	2
4	4	-	-	-	4
7	3	-	-	-	3
8	5	3	-	-	8
9	3	-	2	-	5
10	1	-	-	-	1
13	4	-	-	-	4
14	1	-	-	-	1
15	1	1	1	-	3
16	-	-	2	-	2
18	1	-	2	-	3
20	-	-	1	-	1
21	1	-	-	-	1
23	-	-	3	-	3
TOTAL	29	6	11	1	47

Table 2: Summary of features in Western land parcel

Furrows



Several linear features were orientated on a north-west to south-east alignment in seven of the trenches within the Western land parcel. These are the traces of the furrows characteristic of medieval ridge and furrow arable cultivation. They varied between 1.1m and 2.5m wide and between 0.11m and 0.4m deep.

3.4.4 Archaeological Area 3 (Figure 3 – yellow area AA3, Figure 5)

Ditches

Nine ditches were located within the three trenches which define AA3 situated in the north-eastern part of the land parcel. Evidence of sequential activity was identified in Trench 7 with two intercutting ditches [705] and [707] (Figure 6: Section 4). The ditches were between 0.85m and 1.7m wide and up to 0.53m deep. To the south of these was north-west to south-east ditch [703] which was 0.85m wide and 0.25m deep.

The ditches encountered in Trench 8 [807], [809], [812] and [821] tended to be orientated roughly east to west with the exception of a curvilinear ditch [817]. The contrasting orientation of this ditch compared with the others could suggest a different phase of activity. There was considerable variation in the dimensions of the ditches, which ranged from 0.65m to 3.72m in width and between 0.46m and 1m in depth. The close proximity of ditches [809] and [812] suggests that they were not contemporary. These ditches correlate to a linear cropmark, which continued intermittently to the south-east, where it was investigated by Trench 21.

In Trench 21, north-west to south-east aligned ditch [2107] also corresponds to a cropmark. It was 3m wide and 0.7m deep with a concave profile (Figure 6: Section 5). This earlier more substantial ditch had been recut on its western side by a smaller ditch [2103] that was 1.5m wide and 0.5m deep (Plate 2).

The ditches in Trench 7 had similar mid brown grey silty clay fills, while those in Trenches 8 and the later ditch in Trench 21 contained a sequence of between two and three infilling deposits. The only artefacts comprised a single small sherd of late medieval pottery from ditch [2103], which may be intrusive.

Pits

Three features identified as pits were all located within Trench 8. The pits [804], [814] and [819] were either oval or sub-circular in plan, varying between 0.5m and 1m long with generally steep sided profiles; up to 0.4m deep (Figure 6: Section 3). They were all infilled with single deposits ranging from mid blue brown to yellow brown silty clay. No artefacts were recovered from these features.

3.4.5 Archaeological Area 4 (Figure 3 – light blue AA4)

Ditches

Two ditches were identified between the concentrations of features in AA3 to the north and AA5 to the south-west. In Trench 15, ditch [1505] was orientated approximately north to south, while in Trench 18 was an east to west aligned ditch [1803]. Both ditches were c.1m wide and between 0.22m and 0.45m deep. Their sterile mid brown grey fills contained no artefacts. In Trench 9, two east to west aligned ditches showed evidence for sequential



activity with ditch [905] a recut of [903], which contained a small quantity of Iron Age pottery. They varied between 0.82m and 0.9m wide and between 0.24 and 0.53m deep. To the south of these, ditch [909] may correspond to a cropmark.

Pit

A single pit [1503] in Trench 15 was sub-circular in plan, 1.7m in diameter and 0.25m deep. It was infilled with a single deposit of mid brown grey silty clay that contained no artefacts.

3.4.6 Archaeological Area 5 (Figure 3 –yellow area AA5 and Figure 7)

Ditches

A total of eighteen ditches were identified in the south-west area of the land parcel. At least four of the ditches identified in Trenches 4, 10, 13 and 14 appear to define elements of a curvilinear enclosure visible as a cropmark.

In Trenches 13 and 14, five ditches were identified [1303], [1308], [1310], [1314] and [1403], generally orientated east to west. These ditches are likely to be substantial enclosure ditches, though their proximity suggests that they are not all contemporary and probably represent different phases of the enclosure. There was evidence of recutting with ditch [1308] truncating [1303] and ditch [1403] may be a continuation of ditch [1308], having a similar profile and dimensions. The ditches varied between 1.05m and 2.5m wide with either v-shaped or steep concave profiles and between 0.28m and 0.76m deep.

The fills of the ditches generally consisted of brown silt. The most substantial ditch [1303] (Plate 4) contained four fills that were asymmetrical and thickest in the south. This seems to indicate that the fills formed in dry conditions and that the ditch was filled mainly from the south, which may be an indication of the presence of a bank on the south side of the ditch. Iron Age pottery sherds and animal bone were found in ditches [1303] and [1308] (Plate 5).

Five north-west to south-east aligned ditches [403], [405], [407], [409] and [1003] were identified in Trenches 4 and 10. They varied between 0.9m and 2m wide and 0.23m and 0.57m deep with either steep sided concave or rounded v-shaped profiles. Two of the ditches showed sequential activity as ditch [405] was a recut of ditch [403] (Figure 8: Section 6). The fills of the features comprised orange or grey brown silty clay with ditch [1003] containing Iron Age pottery sherds and animal bone.

Five further ditches were identified within Trenches 1, 2 and 3 (Figure 7). Three were orientated roughly north to south [103], [110] and [203]. Ditch [106] was aligned north-west to south-east and truncated one of the north to south ditches (Plate 3) while ditch [303] was orientated north-east to south-west. They ranged from 0.73m to 1.27m wide and 0.19m and 0.32m deep with either v-shaped or concave profiles (Figure 8: Section 7). The fills generally comprised brown silt clay with a small amount of Iron Age pottery from ditch [303]. In Trench 2 there was no obvious correlation between the angular cropmarks and either archaeological features or variations in the geological strata.



Pits

Two pits [206] and [305] were identified in Trenches 2 and 3. They were between 1m and 2.1m wide and up to 0.34m deep with concave profiles and bases (Figure 8: Section 8). The fills were brown grey silt clay and orange brown silt clay. Pit [305] contained a significant assemblage of Iron Age pottery (Plate 6).

3.5 Artefacts

3.5.1 Introduction

The evaluation produced a small finds assemblage comprising mainly pottery and animal bone (Table 3). The material was scanned to ascertain its nature, condition and, where possible, date range. No artefacts were recovered from Trenches 1, 2, 4-8, 11, 12, 14-20, 22-27, 29, 30 or 32.

Tr.	Feature	Description	Context	Spotdate *	Pottery	Other Finds
03	303	Ditch	304	Iron Age	4:9	Animal bone (19g)
	305	Pit	306	Iron Age	60:599	
09	903	Ditch	904	Iron Age	1:13	
10	1003	Ditch	1004	Iron Age	13:67	Animal bone (6g)
13	1303	Ditch	1307	Iron Age	17:183	Animal bone (59g)
	1308	Ditch	1309	Iron Age	2:8	
21	2103	Ditch	2106	Late medieval	1:7	
28	2803	Ditch	2806	-		Animal bone (42g)
	2803	Ditch	2807	-		Animal bone (19g)
31	3103	Ditch	3104	Post-medieval		Brick or roof tile (17g); iron nails x2
33	3303	Ditch	3304	-		Animal bone (3g)
Total					98:886	

* - spotdates are based on the latest artefact in the assemblage
(sherd/frag count: weight in grammes)

Table 3: Artefact summary by trench and context

3.5.2 Pottery

Ninety-eight pottery sherds weighing 886g were recovered. These were examined by context and quantified using minimum sherd count and weight. Sherds are generally small (average weight 9g) and abraded, although several vessels are represented by more than single sherds. Six fabric types were identified using common names and type codes in accordance with the Ceramic Type Series, currently maintained by Albion Archaeology on behalf of Bedfordshire County Council. Fabrics are listed below (Table 4) in chronological order.

Fabric type	Common name	Sherd No.	Context:sherd no.
<i>Iron Age</i>			
Type F14	Fine mixed inclusions	11	(305):7, (1004):4
Type F16	Coarse shell	43	(306):43
Type F20	Calcareous inclusions	6	(1307):4, (1309):2
Type F28	Fine sand	16	(904):1, (1004):9, (1307):6
Type F38	Glauconitic	21	(304):4, (306):10, (1307):7
<i>Late medieval</i>			
Type E01	Reduced ware	1	(2106):1

Table 4: Pottery Type Series



The majority of the assemblage comprises forms and fabric types suggestive of a middle Iron Age date, comparable with pottery recovered from nearby excavations at Stratton Farm, Biggleswade (Albion Archaeology 2002). Iron Age pottery was recovered exclusively from features within the Archaeological Area 5 (AA5), the majority deriving from pit [305]. The latter contained sixty sherds (599g), forty-three of which are from a large shell tempered vessel. Forms are mainly thick-walled vessels with simple flat or bead rims. One sherd with finger tip impressions is the only decorative element. An abraded sand tempered rim sherd (7g) of 14th-15th century date was recovered from the fill of ditch [2103].

3.5.3 Other finds

Two incomplete iron timber nails, represented by four fragments were recovered from the fill of ditch [3103]. The latter also contained ten vitrified fired clay roof tile or brick fragments (17g). Mortar visible on the surfaces of several pieces indicates use.

The faunal assemblage comprises ninety fragments weighing 148g and occurs in Iron Age features (ditches [1003], [1303] and pit [305]) and undated deposits (ditches [2803] and [3303]). The assemblage comprises small pieces (average fragment weight 2g) and is generally abraded. Diagnostic elements are large mammal long bones and a number of horse teeth.

3.6 Summary

The trial excavation confirmed the presence of archaeological features and deposits within both the Central and Western land parcels. This has allowed a total of five archaeological areas of varying significance to be defined, ranging from settlement, to enclosures and peripheral field systems. These are summarised below in Table 5.

Archaeological Area	Identification (Pre trenching)	Artefacts	Characterisation
1	Cropmarks HER 13956	Sparse- intrusive post-medieval?	Enclosure?
2	-	Sparse – animal bone	Peripheral field system
3	Cropmarks HER 13956	Sparse – late medieval – intrusive?	Enclosures
4	Cropmarks	Sparse – middle Iron Age	Peripheral field system
5	Cropmarks	Frequent – middle Iron Age	Enclosed settlement

Table 5: Summary and characterisation of Archaeological Areas

In the Central land parcel, Archaeological Area 1 was defined by cropmarks, with the geophysical survey defining low responses which appear to correlate to elements of the cropmarks. The trial excavation revealed ditches, which may correlate to the cropmarks though with a c.6m east-west displacement. No evidence for the eastern return of the main enclosure was detected in Trench 30. The substantial ditch in Trench 28 is probable a continuation of the boundary defined by a cropmark which contained into AA3 to the north-west. The only artefacts recovered are probably intrusive: the result of ploughing. However, the lack of finds suggests that this enclosure was not a focus of habitation. The form of the enclosure is similar to those identified in the open area excavation to the east, beyond the Study Area. The excavated



enclosures were associated with a droveway, the projected continuation of which should intersect the northern limit of this enclosure. The area to the east and south (Archaeological Area 2) would appear to be peripheral activity comprising ditches and postholes, probably associated with a field system defined by ditched boundaries and/or fencelines.

In the Western land parcel Archaeological Area 3 was identified in the previous evaluation. The cropmark evidence and the alignment of several of the ditches indicate that it may be a continuation of AA1. The form of the ditches suggests that it may consist of a series of small enclosures associated with a droveway aligned perpendicular to one identified in previous investigations to the east. The lack of artefacts would suggest that this was not a focus of human habitation, although several pits were present.

An area of settlement within a possible enclosure was identified in the south-western part of the land parcel (Archaeological Area 5). Several ditches correspond to cropmarks and may represent a substantial enclosure system associated with settlement activity surrounded by peripheral field boundaries (Archaeological Area 4). A significant assemblage of middle Iron Age pottery was recovered from features within AA5. Evidence of sequential activity indicates that some of the ditches were maintained and kept in use over a substantial period of time and may represent different phases of the enclosure system.

The contrasting alignments of the ridge and furrow identified in the Central and Western land parcels would indicate that during the medieval period there were two separate fields. It is likely that the medieval and post-medieval artefacts from Trenches 21 and 31 were derived from disturbance associated with arable cultivation of the fields.



4. CONCLUSION

4.1 Overview

The evaluation has confirmed the presence of archaeological remains within both land parcels including one of the sites recorded on the Historic Environment Record, **HER 13956**. Dating evidence indicates that the series of cropmarks located in the south-west of the Western land parcel is likely to be part of a middle Iron Age settlement focus (AA5). The pottery is of a similar type and date to that recovered from previously investigated settlements located beyond the Study Area to the north-east. Archaeological Areas AA1 and AA3 comprise two further concentrations of features that appear to represent another focus of activity, comprising enclosures. The available evidence would suggest that they are similar in form to the early-middle Iron Age enclosures investigated in the area to the east. The lack of finds would suggest that these were not the focus of habitation. It is possible that some of the ditches may represent a droveway that could be contemporary with at least one of the settlements located to the north-east, making the overall landscape one of spatially discrete enclosures linked by trackway ditches.

The well preserved remains uncovered here have significant potential to enhance understanding of this period and how the land was utilised and developed. There is evidence for sequential phases of development which will assist in the understanding of the changing utilisation of the landscape during the Iron Age period. The presence of snails and charcoal has potential to enhance our understanding of the contemporary environment.

4.2 Significance of the Archaeological Deposits

The dating evidence shows that the majority of the archaeological remains are of Iron Age date, which is of regional significance. These remains are well preserved and have the potential to address a number of issues associated with national and regional research priorities. Both English Heritage and the East Anglian research agenda (Brown N and Glazebrook J, 2000), identify themes which the Archaeological Areas have varying potential to address, these include:

- In particular, the earlier part of the Iron Age period as the distribution, form and structure of settlements are poorly understood;
- Artefact assemblages from Iron Age sites have been identified as having high potential for refining regional chronologies as well as issues of trade and manufacture;
- Development of the agrarian economy;
- The potential for examining the transition between the early-middle and later Iron Age periods.



5. BIBLIOGRAPHY

Albion Archaeology 2001 *Procedures Manual, Volume 1: Fieldwork*. 2nd Edition

Albion Archaeology 2002 *Beauford Farm, Stratton, Bedfordshire, Archaeological Field Evaluation*. Report No.2002/14

Albion Archaeology 2002 *Stratton Farm, Biggleswade, Bedfordshire. Project Design for Archaeological Field Evaluation*. Report No. 2002/08

Albion Archaeology 2003 *Land west of Stratton Farm, Biggleswade, Bedfordshire: Non-intrusive stages of Archaeological Field Evaluation* Report No. 2003/05

Albion Archaeology 2003 *Land west of Stratton Farm, Biggleswade, Bedfordshire: Trial excavation*. Report No. 2003/56

Albion Archaeology 2004 *Stratton Business Park Access Road, Biggleswade, Bedfordshire: Trial Excavation Report* 2004/53

Archaeological Services (WYAS) 2002 *Stratton Business Park Phase IV, Biggleswade, Bedfordshire Geophysical Survey* Report 969

Bedfordshire County Archaeology Service 1995, *Stratton Business Park, Biggleswade, Phase III (North-East Section), Archaeological Field Evaluation*. Report No. 95/28.

Bedfordshire County Council, 2001 *Brief for the Archaeological Field Evaluation of Land West of Stratton Farm, Biggleswade, Bedfordshire*. V1 20th December Heritage and Environment Section.

Bedfordshire County Council, 2003 *Brief for the Archaeological Field Evaluation of Land West of Stratton Farm, Biggleswade, Bedfordshire*. V1 1st May Heritage and Environment Section

Brown N and Glazebrook J, 2000 *Research and Archaeology: A Framework for the Eastern Counties 2. Research agenda and strategy*

Edmondson G and Preece T (in prep) *Iron Age and Romano-British Settlement at Stratton, Biggleswade*

Thompson, I, 1982, *Grog tempered 'Belgic' Pottery of South-Eastern England*, BAR 108 (I), 15-16



APPENDIX 1

Trenching strategy

Trench	Length (m)	Reason for trench
1	30	General coverage
2	30	Cropmark
3	30	General coverage
4	30	Cropmark
5	50	Investigation of area of ridge and furrow cultivation
6	50	Investigation of projected continuation of cropmarks
7	60	Investigation of linear cropmarks
8	40	Investigation of linear cropmarks/ general coverage
9	30	Linear cropmark
10	30	Linear cropmark
11	30	General coverage
12	30	General coverage
13	30	Cropmark
14	30	General coverage
15	30	General coverage
16	30	General coverage
17	30	General coverage
18	30	General coverage
19	30	General coverage
20	30	General coverage
21	30	Linear cropmark
22	30	Linear cropmarks
23	30	General coverage
24	30	General coverage
25	30	General coverage
26	30	General coverage
27	30	General coverage
28	30	Area of enclosure cropmarks
29	30	General coverage
30	30	Area of enclosure cropmarks
31	40	Area of enclosure cropmarks
32	30	General coverage
33	30	General coverage



APPENDIX 2

Trench summary



Trench: 1

Max Dimensions: Length: 30.00 m. Width: 2.50 m. Depth to Archaeology Min: 0.4 m. Max: 0.45 m.

Co-ordinates: Easting: 52082553: Northing: 24245943

Easting: 52079557: Northing: 24245922

Reason: General coverage

Context:	Type:	Description:	Excavated:	Finds Present:
100	Ploughsoil	Dark grey brown silty clay The deposit was 0.23 - 0.25m thick	<input type="checkbox"/>	<input type="checkbox"/>
101	Subsoil	Mid orange brown silty clay The deposit was 0.17 - 0.2m	<input checked="" type="checkbox"/>	<input type="checkbox"/>
102	Natural	Firm orange yellow chalky clay Patches of gravel	<input type="checkbox"/>	<input type="checkbox"/>
103	Ditch	Linear N-S profile: near vertical dimensions: max depth 0.34m, min length 2.5m	<input checked="" type="checkbox"/>	<input type="checkbox"/>
104	Primary fill	Firm mid yellow brown silty clay moderate medium stones	<input checked="" type="checkbox"/>	<input type="checkbox"/>
105	Upper fill	Friable mid yellow brown silty clay occasional small stones	<input checked="" type="checkbox"/>	<input type="checkbox"/>
106	Ditch	Linear NW-SE profile: concave base: concave dimensions: max breadth 1.04m, max depth 0.32m	<input checked="" type="checkbox"/>	<input type="checkbox"/>
107	Primary fill	Firm mid yellow brown silty clay	<input checked="" type="checkbox"/>	<input type="checkbox"/>
108	Secondary fill	Friable mid yellow brown silty clay	<input checked="" type="checkbox"/>	<input type="checkbox"/>
109	Upper fill	Friable mid orange brown silty clay moderate flecks chalk	<input checked="" type="checkbox"/>	<input type="checkbox"/>
110	Ditch	Linear NNW-SSE dimensions: max length 2.65m, max breadth 0.73m	<input type="checkbox"/>	<input type="checkbox"/>
111	Fill	Friable mid orange brown silty clay occasional medium stones, occasional small stones	<input type="checkbox"/>	<input type="checkbox"/>



Trench: 2

Max Dimensions: Length: 30.00 m. Width: 2.50 m. Depth to Archaeology Min: 0.28 m. Max: 0.5 m.

Co-ordinates: Easting: 52080744: Northing: 24251129

Easting: 52082596: Northing: 24248775

Reason: Cropmark, possibly geological

Context:	Type:	Description:	Excavated:	Finds Present:
200	Ploughsoil	Dark grey brown silty clay The deposit was 0.2 - 0.3m thick	<input checked="" type="checkbox"/>	<input type="checkbox"/>
201	Subsoil	Mid orange brown silty clay The deposit was 0.08 - 0.2m thick	<input checked="" type="checkbox"/>	<input type="checkbox"/>
202	Natural	Mid yellow orange clay moderate small stones Patches of white clay and gravel	<input type="checkbox"/>	<input type="checkbox"/>
203	Ditch	Linear NNW-SSE profile: concave base: concave dimensions: max breadth 0.74m, max depth 0.19m	<input checked="" type="checkbox"/>	<input type="checkbox"/>
204	Upper fill	Firm mid yellow brown silty clay	<input checked="" type="checkbox"/>	<input type="checkbox"/>
205	Lower fill	Friable mid yellow brown silty clay occasional small stones	<input checked="" type="checkbox"/>	<input type="checkbox"/>
206	Pit	Oval profile: concave base: concave dimensions: max breadth 2.12m, max depth 0.34m	<input checked="" type="checkbox"/>	<input type="checkbox"/>
207	Fill	Friable mid orange brown silty clay moderate small stones, occasional medium stones	<input checked="" type="checkbox"/>	<input type="checkbox"/>
208	Treethrow	Oval dimensions: max length 2.m, max breadth 2.1m	<input type="checkbox"/>	<input type="checkbox"/>
209	Fill	Friable mid orange brown silty clay moderate medium stones, moderate small stones	<input type="checkbox"/>	<input type="checkbox"/>



Trench: 3

Max Dimensions: Length: 30.00 m. Width: 2.50 m. Depth to Archaeology Min: 0.41 m. Max: 0.45 m.

Co-ordinates: Easting: 52087552: Northing: 24251482

Easting: 52087491: Northing: 24248483

Reason: General coverage

Context:	Type:	Description:	Excavated:	Finds Present:
300	Ploughsoil	Dark grey brown silty clay The deposit was 0.25 - 0.45m thick	<input checked="" type="checkbox"/>	<input type="checkbox"/>
301	Subsoil	Mid orange brown silty clay The deposit was 0.15 - 0.2m thick	<input checked="" type="checkbox"/>	<input type="checkbox"/>
302	Natural	Firm mid yellow orange clay Patches of white clay and gravel	<input type="checkbox"/>	<input type="checkbox"/>
303	Ditch	Linear NE-SW profile: concave base: v-shaped dimensions: min length 4.m, max breadth 0.9m, max depth 0.25m	<input checked="" type="checkbox"/>	<input type="checkbox"/>
304	Fill	Compact mid brown grey silty clay occasional flecks chalk contains small quantity of pottery	<input checked="" type="checkbox"/>	<input checked="" type="checkbox"/>
305	Pit	Sub-oval profile: concave base: concave dimensions: max length 1.m, max breadth 1.3m, max depth 0.27m	<input checked="" type="checkbox"/>	<input type="checkbox"/>
306	Refuse deposit	Compact dark brown grey silty clay occasional flecks chalk, occasional small charcoal contains animal bone and a substantial assemblage of pottery	<input checked="" type="checkbox"/>	<input checked="" type="checkbox"/>



Trench: 4

Max Dimensions: Length: 30.00 m. Width: 2.50 m. Depth to Archaeology Min: 0.36 m. Max: 0.42 m.

Co-ordinates: Easting: 52091301: Northing: 24249838

Easting: 52093820: Northing: 24251482

Reason: Cropmark

Context:	Type:	Description:	Excavated:	Finds Present:
400	Ploughsoil	Dark grey brown silty clay The deposit was 0.2 - 0.34m thick	<input checked="" type="checkbox"/>	<input type="checkbox"/>
401	Subsoil	Mid orange brown silty clay The deposit was 0.18m thick	<input checked="" type="checkbox"/>	<input type="checkbox"/>
402	Natural	Mid yellow orange silty clay moderate small stones Patches of gravel	<input type="checkbox"/>	<input type="checkbox"/>
403	Ditch	Linear NW-SE profile: concave base: flat dimensions: max breadth 0.9m, max depth 0.28m	<input checked="" type="checkbox"/>	<input type="checkbox"/>
404	Fill	Compact mid orange brown silty clay	<input checked="" type="checkbox"/>	<input type="checkbox"/>
405	Ditch	Linear NW-SE profile: near vertical base: uneven dimensions: max breadth 1.25m, max depth 0.57m	<input checked="" type="checkbox"/>	<input type="checkbox"/>
406	Fill	Compact light orange brown clay	<input checked="" type="checkbox"/>	<input type="checkbox"/>
407	Ditch	Linear NW-SE profile: concave base: v-shaped dimensions: max breadth 1.27m, max depth 0.23m	<input checked="" type="checkbox"/>	<input type="checkbox"/>
408	Fill	Firm mid brown grey clay silt	<input checked="" type="checkbox"/>	<input type="checkbox"/>
409	Ditch	Linear NW-SE dimensions: max length 2.m, max breadth 0.8m	<input type="checkbox"/>	<input type="checkbox"/>
410	Fill	Firm mid grey brown silty clay	<input type="checkbox"/>	<input type="checkbox"/>



Trench: 5

Max Dimensions: Length: 50.00 m. Width: 1.50 m. Depth to Archaeology Min: 0.5 m. Max: 0.5 m.

Co-ordinates: Easting: 52111892: Northing: 24271378

Easting: 52113941: Northing: 24266822

Reason: Investigation of area of ridge and furrow cultivation

Context:	Type:	Description:	Excavated:	Finds Present:
500	Ploughsoil	Firm dark grey brown silty clay moderate small-medium stones The deposit was 0.35m thick	<input checked="" type="checkbox"/>	<input type="checkbox"/>
501	Subsoil	Firm mid red brown silty clay moderate small-medium stones The deposit was between 0.25m and 0.3m thick	<input checked="" type="checkbox"/>	<input type="checkbox"/>
502	Natural	Light orange sandy clay The deposit is a mix of orange sandy clay and grey-white clay with patches of gravel and chalk	<input type="checkbox"/>	<input type="checkbox"/>
503	Ditch	Linear E-W profile: concave base: flat dimensions: max breadth 0.7m, max depth 0.2m, min length 1.55m Parallel to ditch [505] and possibly contemporary	<input checked="" type="checkbox"/>	<input type="checkbox"/>
504	Fill	Mid yellow grey silty clay occasional small stones Fill was 0.2m thick	<input checked="" type="checkbox"/>	<input type="checkbox"/>
505	Ditch	Linear E-W dimensions: max breadth 1.2m, min length 1.55m	<input type="checkbox"/>	<input type="checkbox"/>
506	Fill	Mid yellow grey silty clay occasional small stones	<input type="checkbox"/>	<input type="checkbox"/>
507	Pit	Oval profile: concave base: concave dimensions: max breadth 0.6m, max depth 0.15m, max length 0.8m	<input checked="" type="checkbox"/>	<input type="checkbox"/>
508	Fill	Mid yellow grey silty clay occasional small stones	<input checked="" type="checkbox"/>	<input type="checkbox"/>
509	Furrow	Linear NE-SW dimensions: max breadth 1.m, min length 1.55m	<input type="checkbox"/>	<input type="checkbox"/>
510	Fill	Mid orange brown clay silt occasional small stones	<input type="checkbox"/>	<input type="checkbox"/>



Trench: 6

Max Dimensions: Length: 50.00 m. Width: 1.50 m. Depth to Archaeology Min: 0.48 m. Max: 0.56 m.

Co-ordinates: Easting: 52099357: Northing: 24280168

Easting: 52094774: Northing: 24278144

Reason: Investigation of projected continuation of cropmarks

Context:	Type:	Description:	Excavated:	Finds Present:
600	Ploughsoil	Dark grey brown silty clay moderate small stones The deposit was 0.3m thick	<input checked="" type="checkbox"/>	<input type="checkbox"/>
601	Subsoil	Mid red brown silty clay occasional small stones The deposit was between 0.18m and 0.26m thick	<input checked="" type="checkbox"/>	<input type="checkbox"/>
602	Natural	Compact light orange yellow silty clay The deposit had pockets of orange-brown sandy silt and gravel	<input type="checkbox"/>	<input type="checkbox"/>
603	Pit	Oval profile: vertical base: concave dimensions: max depth 0.32m, max diameter 0.35m	<input checked="" type="checkbox"/>	<input type="checkbox"/>
604	Fill	Firm mid orange brown clay silt occasional small stones	<input checked="" type="checkbox"/>	<input type="checkbox"/>
605	Ditch	Linear NW-SE profile: 45 degrees base: concave dimensions: max breadth 1.15m, max depth 0.38m, min length 1.6m	<input checked="" type="checkbox"/>	<input type="checkbox"/>
606	Upper fill	Mid yellow brown silty clay moderate small stones	<input checked="" type="checkbox"/>	<input type="checkbox"/>
607	Lower fill	Dark yellow brown clay silt frequent small stones	<input checked="" type="checkbox"/>	<input type="checkbox"/>
608	Land drain	Linear profile: vertical Feature containing modern ceramic land drain	<input checked="" type="checkbox"/>	<input type="checkbox"/>



Trench: 7

Max Dimensions: Length: 60.00 m. Width: 1.50 m. Depth to Archaeology Min: 0.5 m. Max: 0.6 m.

Co-ordinates: Easting: 52090865: Northing: 24275987

Easting: 52086849: Northing: 24271539

Reason: Investigation of linear cropmarks

Context:	Type:	Description:	Excavated:	Finds Present:
700	Ploughsoil	Dark grey brown silty clay The deposit is 0.3m thick	<input checked="" type="checkbox"/>	<input type="checkbox"/>
701	Subsoil	Mid red brown silty clay The deposit is between 0.25m and 0.35m thick	<input checked="" type="checkbox"/>	<input type="checkbox"/>
702	Natural	Light yellow orange sandy clay The deposit contains pockets of gravel and chalk	<input type="checkbox"/>	<input type="checkbox"/>
703	Ditch	Linear NW-SE profile: concave base: concave dimensions: max breadth 0.85m, max depth 0.25m, min length 1.5m	<input checked="" type="checkbox"/>	<input type="checkbox"/>
704	Fill	Mid red brown silty clay moderate small stones	<input checked="" type="checkbox"/>	<input type="checkbox"/>
705	Ditch	Linear ENE-WSW profile: stepped base: concave dimensions: max breadth 1.7m, max depth 0.53m, min length 1.5m	<input checked="" type="checkbox"/>	<input type="checkbox"/>
706	Fill	Friable mid grey brown sandy clay frequent small stones, occasional medium-large stones	<input checked="" type="checkbox"/>	<input type="checkbox"/>
707	Ditch	Linear NW-SE profile: stepped base: concave dimensions: max breadth 0.87m, max depth 0.36m, min length 1.75m	<input checked="" type="checkbox"/>	<input type="checkbox"/>
708	Fill	Friable mid grey brown sandy clay moderate small-medium stones	<input checked="" type="checkbox"/>	<input type="checkbox"/>



Trench: 8

Max Dimensions: Length: 40.00 m. Width: 1.50 m. Depth to Archaeology Min: 0.4 m. Max: 0.5 m.

Co-ordinates: Easting: 52081699: Northing: 24273992

Easting: 52084449: Northing: 24271135

Reason: Investigation of linear cropmarks/general coverage

Context:	Type:	Description:	Excavated:	Finds Present:
800	Ploughsoil	Dark grey brown silty clay occasional small stones The deposit is between 0.25m and 0.3m thick	<input checked="" type="checkbox"/>	<input type="checkbox"/>
801	Subsoil	Mid red brown silty clay The deposit is between 0.22m and 0.4m	<input checked="" type="checkbox"/>	<input type="checkbox"/>
802	Natural	Mid red orange sandy clay Occasional patches of gravel	<input type="checkbox"/>	<input type="checkbox"/>
804	Pit	Sub-circular profile: near vertical base: concave dimensions: max breadth 0.96m, max depth 0.4m, max length 1.m	<input checked="" type="checkbox"/>	<input type="checkbox"/>
803	Fill	Firm mid blue brown silty clay occasional flecks charcoal, occasional small-large stones	<input checked="" type="checkbox"/>	<input type="checkbox"/>
807	Ditch	Linear NE-SW profile: stepped base: concave dimensions: max breadth 3.72m, max depth 0.56m, min length 1.55m	<input checked="" type="checkbox"/>	<input type="checkbox"/>
805	Upper fill	Firm mid grey brown silty clay occasional flecks chalk, occasional small-medium stones	<input checked="" type="checkbox"/>	<input type="checkbox"/>
806	Lower fill	Firm mid red brown silty clay occasional small stones	<input checked="" type="checkbox"/>	<input type="checkbox"/>
809	Ditch	Linear E-W dimensions: max breadth 0.65m, min length 1.75m	<input type="checkbox"/>	<input type="checkbox"/>
808	Fill	Dark grey brown clay silt	<input type="checkbox"/>	<input type="checkbox"/>
812	Ditch	Linear E-W profile: stepped dimensions: max breadth 3.2m, max depth 1.m, min length 1.75m	<input checked="" type="checkbox"/>	<input type="checkbox"/>
810	Upper fill	Light grey orange silty clay frequent small stones, occasional large stones	<input checked="" type="checkbox"/>	<input type="checkbox"/>
811	Lower fill	Dark grey brown silty clay frequent small-medium stones	<input checked="" type="checkbox"/>	<input type="checkbox"/>
814	Pit	Sub-circular profile: near vertical base: flat dimensions: max breadth 0.5m, max depth 0.29m	<input checked="" type="checkbox"/>	<input type="checkbox"/>
813	Fill	Mid grey brown clay silt occasional small stones	<input checked="" type="checkbox"/>	<input type="checkbox"/>
817	Ditch	Curving linear NW-SE profile: concave dimensions: max breadth 1.55m, max depth 0.46m, min length 3.m Long axis aligned north-west to south-east, curving to the west in the north	<input checked="" type="checkbox"/>	<input type="checkbox"/>
815	Upper fill	Mid yellow brown clay silt moderate small stones	<input checked="" type="checkbox"/>	<input type="checkbox"/>
816	Lower fill	Mid yellow brown clay silt frequent small-medium stones	<input checked="" type="checkbox"/>	<input type="checkbox"/>
819	Pit	Oval dimensions: max breadth 0.4m, max length 0.56m	<input type="checkbox"/>	<input type="checkbox"/>
818	Fill	Mid yellow brown silty clay occasional small-medium stones	<input type="checkbox"/>	<input type="checkbox"/>
821	Ditch	Linear NE-SW dimensions: max breadth 0.65m, min length 1.55m	<input type="checkbox"/>	<input type="checkbox"/>
820	Fill	Mid grey brown clay silt frequent small stones	<input type="checkbox"/>	<input type="checkbox"/>



Trench: 9

Max Dimensions: Length: 30.00 m. Width: 2.50 m. Depth to Archaeology Min: 0.4 m. Max: 0.4 m.

Co-ordinates: Easting: 52099566: Northing: 24257458

Easting: 52099629: Northing: 24254459

Reason: Linear cropmark

Context:	Type:	Description:	Excavated:	Finds Present:
900	Ploughsoil	Dark grey brown silty clay The deposit was 0.26m thick	<input checked="" type="checkbox"/>	<input type="checkbox"/>
901	Subsoil	Mid orange brown silty clay The deposit was 0.20m thick	<input checked="" type="checkbox"/>	<input type="checkbox"/>
902	Natural	Light orange yellow silty clay frequent flecks chalk Frequent inclusions of chalk and gravel	<input type="checkbox"/>	<input type="checkbox"/>
903	Ditch	Linear E-W base: v-shaped dimensions: min length 2.5m, max breadth 0.82m, max depth 0.53m	<input checked="" type="checkbox"/>	<input type="checkbox"/>
904	Fill	Firm mid orange brown silty clay frequent flecks chalk, frequent small stones contains a small quantity of pottery	<input checked="" type="checkbox"/>	<input checked="" type="checkbox"/>
905	Ditch	Linear E-W profile: near vertical base: flat dimensions: max length 2.5m, max breadth 0.9m, max depth 0.24m	<input checked="" type="checkbox"/>	<input type="checkbox"/>
906	Fill	Firm mid orange brown silty clay occasional flecks chalk, occasional medium stones, occasional small stones	<input checked="" type="checkbox"/>	<input type="checkbox"/>
907	Furrow	Linear NW-SE profile: irregular base: uneven dimensions: max length 4.m, max breadth 1.3m, max depth 0.11m	<input checked="" type="checkbox"/>	<input type="checkbox"/>
908	Fill	Compact mid brown orange silty clay frequent flecks chalk, frequent medium stones, frequent small stones	<input checked="" type="checkbox"/>	<input type="checkbox"/>
909	Ditch	Linear NE-SW dimensions: max length 5.m, max breadth 3.2m	<input type="checkbox"/>	<input type="checkbox"/>
910	Fill	Firm mid brown grey silty clay frequent small burnt stones, frequent flecks chalk, frequent medium stones, frequent small stones	<input type="checkbox"/>	<input type="checkbox"/>
911	Furrow	Linear NW-SE dimensions: max length 5.25m, max breadth 1.2m	<input type="checkbox"/>	<input type="checkbox"/>
912	Fill	Compact mid brown orange silty clay frequent flecks chalk, frequent medium stones, frequent small stones	<input type="checkbox"/>	<input type="checkbox"/>



Trench: 10

Max Dimensions: Length: 30.00 m. Width: 2.50 m. Depth to Archaeology Min: 0.5 m. Max: 0.56 m.

Co-ordinates: Easting: 52091134: Northing: 24255771

Easting: 52088135: Northing: 24255729

Reason: Linear cropmark

Context:	Type:	Description:	Excavated:	Finds Present:
1000	Ploughsoil	Dark grey brown silty clay The deposit was 0.3m thick	<input checked="" type="checkbox"/>	<input type="checkbox"/>
1001	Subsoil	Mid orange brown silty clay The deposit was 0.26m thick	<input checked="" type="checkbox"/>	<input type="checkbox"/>
1002	Natural	Firm light yellow orange clay frequent flecks chalk, frequent small-medium stones Frequent inclusions of small to medium stones and gravel	<input type="checkbox"/>	<input type="checkbox"/>
1003	Ditch	Linear NW-SE profile: 45 degrees base: v-shaped dimensions: min length 4.5m, max breadth 1.1m, max depth 0.27m	<input checked="" type="checkbox"/>	<input type="checkbox"/>
1004	Fill	Compact mid grey brown silty clay frequent medium stones, frequent small stones contains pottery and animal bone	<input checked="" type="checkbox"/>	<input checked="" type="checkbox"/>



Trench: 11

Max Dimensions: Length: 30.00 m. Width: 2.50 m. Depth to Archaeology Min: 0.38 m. Max: 0.44 m.

Co-ordinates: Easting: 52079993: Northing: 24254270

Easting: 52076994: Northing: 24254333

Reason: General coverage

Context:	Type:	Description:	Excavated:	Finds Present:
1100	Ploughsoil	Dark grey brown silty clay The deposit was 0.2 - 0.38m thick	<input checked="" type="checkbox"/>	<input type="checkbox"/>
1101	Subsoil	Mid orange brown silty clay The deposit was 0.06 - 0.18m thick	<input checked="" type="checkbox"/>	<input type="checkbox"/>
1102	Natural	Orange yellow clay occasional small stones Occasional patches of gravel	<input type="checkbox"/>	<input type="checkbox"/>



Trench: 12

Max Dimensions: Length: 30.00 m. Width: 2.50 m. Depth to Archaeology Min: 0.42 m. Max: 0.49 m.

Co-ordinates: Easting: 52075662: Northing: 24261747

Easting: 52075787: Northing: 24258748

Reason: Gernal coverage

Context:	Type:	Description:	Excavated:	Finds Present:
1200	Ploughsoil	Dark grey brown silty clay The deposit was 0.24 - 0.35m thick	<input checked="" type="checkbox"/>	<input type="checkbox"/>
1201	Subsoil	Mid orange brown silty clay The deposit was 0.14 - 0.18m thick	<input checked="" type="checkbox"/>	<input type="checkbox"/>
1202	Natural	Yellow orange clay moderate small stones Occassional patches of gravel	<input type="checkbox"/>	<input type="checkbox"/>



Trench: 13

Max Dimensions: Length: 30.00 m. Width: 2.50 m. Depth to Archaeology Min: 0.45 m. Max: 0.47 m.

Co-ordinates: Easting: 52079930: Northing: 24259101

Easting: 52079909: Northing: 24256104

Reason: Cropmark

Context:	Type:	Description:	Excavated:	Finds Present:
1300	Ploughsoil	Dark grey brown silty clay The deposit was 0.25 - 0.26m thick	<input checked="" type="checkbox"/>	<input type="checkbox"/>
1301	Subsoil	Mid orange brown silty clay The deposit was 0.2 - 0.21m thick	<input checked="" type="checkbox"/>	<input type="checkbox"/>
1302	Natural	Firm orange yellow clay Patches of gravel.	<input type="checkbox"/>	<input type="checkbox"/>
1303	Ditch	Linear ESE-WNW profile: stepped base: concave dimensions: max breadth 2.5m, max depth 0.76m	<input checked="" type="checkbox"/>	<input type="checkbox"/>
1304	Primary fill	Friable light brown yellow silty clay	<input checked="" type="checkbox"/>	<input type="checkbox"/>
1305	Main fill	Friable mid yellow grey silty clay moderate medium stones, moderate small stones	<input checked="" type="checkbox"/>	<input type="checkbox"/>
1306	Fill	Firm mid orange brown silty clay	<input checked="" type="checkbox"/>	<input type="checkbox"/>
1307	Upper fill	Mid grey brown silty clay occasional small stones contains pottery and animal bone	<input checked="" type="checkbox"/>	<input checked="" type="checkbox"/>
1308	Ditch	Linear ESE-WNW profile: concave base: v-shaped dimensions: max breadth 1.05m, max depth 0.29m	<input checked="" type="checkbox"/>	<input type="checkbox"/>
1309	Fill	Mid grey brown silty clay moderate small stones, occasional medium stones contains a small quantity of pottery	<input checked="" type="checkbox"/>	<input checked="" type="checkbox"/>
1310	Ditch	Linear E-W profile: stepped dimensions: max breadth 0.98m, max depth 0.54m	<input checked="" type="checkbox"/>	<input type="checkbox"/>
1311	Primary fill	Friable mid yellow grey silty clay occasional medium stones, occasional small stones	<input checked="" type="checkbox"/>	<input type="checkbox"/>
1312	Secondary fill	Friable mid grey brown silty clay occasional small stones	<input checked="" type="checkbox"/>	<input type="checkbox"/>
1313	Upper fill	Friable mid grey brown silty clay frequent small chalk	<input checked="" type="checkbox"/>	<input type="checkbox"/>
1314	Ditch	Linear E-W dimensions: min length 2.5m, max breadth 2.8m	<input type="checkbox"/>	<input type="checkbox"/>
1315	Fill	Friable mid orange brown silty clay frequent small stones	<input type="checkbox"/>	<input type="checkbox"/>



Trench: 14

Max Dimensions: Length: 30.00 m. Width: 2.50 m. Depth to Archaeology Min: 0.45 m. Max: 0.45 m.

Co-ordinates: Easting: 52084740: Northing: 24261496

Easting: 52084678: Northing: 24258498

Reason: General coverage

Context:	Type:	Description:	Excavated:	Finds Present:
1400	Ploughsoil	Dark grey brown silty clay The deposit was 0.25 - 0.35m thick	<input checked="" type="checkbox"/>	<input type="checkbox"/>
1401	Subsoil	Mid orange brown silty clay The deposit was 0.1 - 0.2m thick	<input checked="" type="checkbox"/>	<input type="checkbox"/>
1402	Natural	Firm light orange grey Patches of orange gravel	<input type="checkbox"/>	<input type="checkbox"/>
1403	Ditch	Linear ESE-WNW base: v-shaped dimensions: max breadth 1.03m, max depth 0.26m	<input checked="" type="checkbox"/>	<input type="checkbox"/>
1404	Fill	Firm mid grey brown silty clay	<input checked="" type="checkbox"/>	<input type="checkbox"/>



Trench: 15

Max Dimensions: Length: 30.00 m. Width: 2.50 m. Depth to Archaeology Min: 0.45 m. Max: 0.45 m.

Co-ordinates: Easting: 52089508: Northing: 24260248

Easting: 52092507: Northing: 24260102

Reason: General coverage

Context:	Type:	Description:	Excavated:	Finds Present:
1500	Ploughsoil	Dark grey brown silty clay The deposit was 0.25 - 0.35m thick	<input checked="" type="checkbox"/>	<input type="checkbox"/>
1501	Subsoil	Mid orange brown silty clay The deposit was 0.1 - 0.25m thick	<input checked="" type="checkbox"/>	<input type="checkbox"/>
1502	Natural	Firm mid orange yellow clay Very patchy gravel inclusions	<input type="checkbox"/>	<input type="checkbox"/>
1503	Pit	Sub-circular profile: concave base: concave dimensions: max breadth 1.7m, max depth 0.25m	<input checked="" type="checkbox"/>	<input type="checkbox"/>
1504	Fill	Firm mid brown grey silty clay occasional flecks chalk	<input checked="" type="checkbox"/>	<input type="checkbox"/>
1505	Ditch	Linear N-S profile: concave base: concave dimensions: max breadth 1.m, max depth 0.22m	<input checked="" type="checkbox"/>	<input type="checkbox"/>
1506	Fill	Mid brown grey silty clay frequent flecks chalk	<input checked="" type="checkbox"/>	<input type="checkbox"/>
1507	Furrow	Linear NW-SE dimensions: max length 2.m, max breadth 1.4m	<input type="checkbox"/>	<input type="checkbox"/>
1508	Fill	Firm mid orange brown sandy silt	<input type="checkbox"/>	<input type="checkbox"/>



Trench: 16

Max Dimensions: Length: 30.00 m. Width: 2.50 m. Depth to Archaeology Min: 0.42 m. Max: 0.45 m.

Co-ordinates: Easting: 52095672: Northing: 24266577

Easting: 52095735: Northing: 24263579

Reason: General coverage

Context:	Type:	Description:	Excavated:	Finds Present:
1600	Ploughsoil	Dark grey brown silty clay The deposit was 0.25m thick	<input checked="" type="checkbox"/>	<input type="checkbox"/>
1601	Subsoil	Mid orange brown silty clay The deposit was 0.2m thick	<input checked="" type="checkbox"/>	<input type="checkbox"/>
1602	Natural	Firm mid orange brown silty clay Patches of gravel	<input type="checkbox"/>	<input type="checkbox"/>
1603	Furrow	Linear NW-SE dimensions: min length 6.6m, max breadth 1.2m	<input type="checkbox"/>	<input type="checkbox"/>
1604	Fill	Firm mid orange brown clay silt occasional flecks chalk Occasional small flints	<input type="checkbox"/>	<input type="checkbox"/>
1605	Furrow	Linear NW-SE profile: concave base: uneven dimensions: max breadth 1.3m, max depth 0.17m	<input checked="" type="checkbox"/>	<input type="checkbox"/>
1606	Fill	Firm mid orange brown clay silt occasional flecks chalk	<input checked="" type="checkbox"/>	<input type="checkbox"/>



Trench: 17

Max Dimensions: Length: 30.00 m. Width: 2.50 m. Depth to Archaeology Min: 0.4 m. Max: 0.51 m.

Co-ordinates: Easting: 52086653: Northing: 24265455

Easting: 52089647: Northing: 24265331

Reason: General coverage

Context:	Type:	Description:	Excavated:	Finds Present:
1700	Ploughsoil	Dark grey brown silty clay The deposit was 0.22 - 0.3m thick	<input type="checkbox"/>	<input type="checkbox"/>
1701	Subsoil	Mid orange brown silty clay The deposit was 0.18 - 0.21m thick	<input checked="" type="checkbox"/>	<input type="checkbox"/>
1702	Natural	Yellow orange clay Mixed patches of white, yellow and orange clay	<input type="checkbox"/>	<input type="checkbox"/>



Trench: 18

Max Dimensions: Length: 30.00 m. Width: 2.50 m. Depth to Archaeology Min: 0.46 m. Max: 0.5 m.

Co-ordinates: Easting: 52081241: Northing: 24266192

Easting: 52081241: Northing: 24263179

Reason: General coverage

Context:	Type:	Description:	Excavated:	Finds Present:
1800	Ploughsoil	Friable dark grey brown silty clay The deposit was 0.3m thick	<input checked="" type="checkbox"/>	<input type="checkbox"/>
1801	Subsoil	Friable mid orange brown silty clay frequent small-medium stones The deposit was 0.2m thick	<input checked="" type="checkbox"/>	<input type="checkbox"/>
1802	Natural	Firm light yellow orange clay moderate flecks chalk, moderate small stones	<input type="checkbox"/>	<input type="checkbox"/>
1803	Ditch	Linear E-W profile: 45 degrees base: concave dimensions: min length 2.5m, max breadth 1.16m, max depth 0.45m	<input checked="" type="checkbox"/>	<input type="checkbox"/>
1804	Fill	Firm mid grey brown silty clay frequent small-medium stones	<input checked="" type="checkbox"/>	<input type="checkbox"/>
1805	Furrow	Linear NW-SE dimensions: min length 4.5m, max breadth 1.15m	<input type="checkbox"/>	<input type="checkbox"/>
1806	Fill	Firm mid brown grey silty clay frequent small stones	<input type="checkbox"/>	<input type="checkbox"/>
1807	Furrow	Linear NW-SE dimensions: min length 3.5m, max breadth 1.1m	<input type="checkbox"/>	<input type="checkbox"/>
1808	Fill	Firm mid brown grey silty clay frequent small stones	<input type="checkbox"/>	<input type="checkbox"/>



Trench: 19

Max Dimensions: Length: 30.00 m. Width: 2.50 m. Depth to Archaeology Min: 0.45 m. Max: 0.48 m.

Co-ordinates: Easting: 52073059; Northing: 24264758

Easting: 52076053; Northing: 24264594

Reason: General coverage

Context:	Type:	Description:	Excavated:	Finds Present:
1900	Ploughsoil	Dark grey brown silty clay The deposit was 0.3m thick	<input checked="" type="checkbox"/>	<input type="checkbox"/>
1901	Subsoil	Mid orange brown silty clay The deposit was 0.15 - 0.18m thick	<input checked="" type="checkbox"/>	<input type="checkbox"/>
1902	Natural	Mid orange grey clay Gravel patches	<input type="checkbox"/>	<input type="checkbox"/>



Trench: 20

Max Dimensions: Length: 30.00 m. Width: 2.50 m. Depth to Archaeology Min: 0.42 m. Max: 0.45 m.

Co-ordinates: Easting: 52078472: Northing: 24269699

Easting: 52081466: Northing: 24269699

Reason: General coverage

Context:	Type:	Description:	Excavated:	Finds Present:
2000	Ploughsoil	Dark grey brown silty clay The deposit was 0.29m thick	<input checked="" type="checkbox"/>	<input type="checkbox"/>
2001	Subsoil	Mid orange brown silty clay frequent small-medium chalk, frequent small-medium stones, occasional large stones The deposit was 0.26m thick	<input checked="" type="checkbox"/>	<input type="checkbox"/>
2002	Natural	Firm mid grey orange clay frequent flecks chalk Frequent gravel patches	<input type="checkbox"/>	<input type="checkbox"/>
2003	Furrow	Linear NW-SE profile: irregular base: concave dimensions: max length 2.5m, max breadth 1.55m, max depth 0.4m	<input checked="" type="checkbox"/>	<input type="checkbox"/>
2004	Fill	Firm mid orange grey silty clay moderate flecks chalk, moderate small-medium stones	<input checked="" type="checkbox"/>	<input type="checkbox"/>



Trench: 21

Max Dimensions: Length: 30.00 m. Width: 2.50 m. Depth to Archaeology Min: 0.45 m. Max: 0.55 m.

Co-ordinates: Easting: 52089422: Northing: 24269331

Easting: 52091513: Northing: 24271484

Reason: Linear cropmark

Context:	Type:	Description:	Excavated:	Finds Present:
2100	Ploughsoil	Friable dark grey brown silty clay The deposit was 0.25m thick	<input checked="" type="checkbox"/>	<input type="checkbox"/>
2101	Subsoil	Friable mid orange brown silty clay The deposit was 0.2 - 0.3m thick	<input checked="" type="checkbox"/>	<input type="checkbox"/>
2102	Natural	Firm orange clay Abundant gravel inclusions to NE end	<input type="checkbox"/>	<input type="checkbox"/>
2103	Ditch	Linear NW-SE profile: 45 degrees dimensions: min length 2.5m, max breadth 1.5m, max depth 0.5m	<input checked="" type="checkbox"/>	<input type="checkbox"/>
2104	Lower fill	Firm mid orange brown silty clay	<input checked="" type="checkbox"/>	<input type="checkbox"/>
2105	Main fill	Firm mid brown grey silty clay	<input checked="" type="checkbox"/>	<input type="checkbox"/>
2106	Upper fill	Firm mid orange grey silty clay contains a small quantity of pottery	<input checked="" type="checkbox"/>	<input checked="" type="checkbox"/>
2107	Ditch	Linear NW-SE profile: concave base: concave dimensions: max depth 0.7m, max breadth 3.m	<input checked="" type="checkbox"/>	<input type="checkbox"/>
2108	Fill	Mid orange grey silty clay occasional small-medium stones	<input checked="" type="checkbox"/>	<input type="checkbox"/>



Trench: 22

Max Dimensions: Length: 30.00 m. Width: 2.50 m. Depth to Archaeology Min: 0.49 m. Max: 0.59 m.

Co-ordinates: Easting: 52083761: Northing: 24275933

Easting: 52086715: Northing: 24276343

Reason: On line of two linear cropmarks

Context:	Type:	Description:	Excavated:	Finds Present:
2200	Ploughsoil	Dark grey brown silty clay The deposit was 0.22 - 0.28m thick	<input checked="" type="checkbox"/>	<input type="checkbox"/>
2201	Subsoil	Mid orange brown silty clay The deposit was 0.31m thick	<input checked="" type="checkbox"/>	<input type="checkbox"/>
2202	Natural	Orange clay Gravel patches	<input type="checkbox"/>	<input type="checkbox"/>



Trench: 23

Max Dimensions: Length: 30.00 m. Width: 2.50 m. Depth to Archaeology Min: 0.4 m. Max: 0.45 m.

Co-ordinates: Easting: 52072586: Northing: 24271401

Easting: 52075354: Northing: 24272550

Reason: General coverage

Context:	Type:	Description:	Excavated:	Finds Present:
2300	Ploughsoil	Dark grey brown silty clay The deposit was 0.3m thick	<input checked="" type="checkbox"/>	<input type="checkbox"/>
2301	Subsoil	Mid orange brown silty clay The deposit was 0.17m thick	<input checked="" type="checkbox"/>	<input type="checkbox"/>
2302	Natural	Firm mid grey orange silty clay frequent flecks chalk Frequent gravel patches	<input type="checkbox"/>	<input type="checkbox"/>
2303	Furrow	Linear NW-SE profile: irregular base: uneven dimensions: min length 2.5m, max breadth 2.5m, max depth 0.32m	<input checked="" type="checkbox"/>	<input type="checkbox"/>
2304	Fill	Compact mid grey orange silty clay frequent flecks chalk, frequent small stones	<input checked="" type="checkbox"/>	<input type="checkbox"/>
2305	Furrow	Linear NW-SE dimensions: min length 2.5m, max breadth 2.5m	<input type="checkbox"/>	<input type="checkbox"/>
2306	Fill	Compact mid grey orange silty clay frequent flecks chalk, frequent small stones	<input type="checkbox"/>	<input type="checkbox"/>
2307	Furrow	Linear NW-SE dimensions: min length 2.5m, max breadth 2.2m	<input type="checkbox"/>	<input type="checkbox"/>
2308	Fill	Compact mid grey orange silty clay frequent flecks chalk, frequent small stones	<input type="checkbox"/>	<input type="checkbox"/>



Trench: 24

Max Dimensions: Length: 30.00 m. Width: 2.50 m. Depth to Archaeology Min: 0.31 m. Max: 0.35 m.

Co-ordinates: Easting: 52100411: Northing: 24261722

Easting: 52103411: Northing: 24261518

Reason: General coverage

Context:	Type:	Description:	Excavated:	Finds Present:
2400	Ploughsoil	Friable dark grey brown silty clay The deposit was 0.31m thick	<input checked="" type="checkbox"/>	<input type="checkbox"/>
2401	Subsoil	Friable mid orange brown silty clay The deposit was 0.3m thick	<input checked="" type="checkbox"/>	<input type="checkbox"/>
2402	Natural	Mid brown yellow silty clay frequent small-large stones	<input type="checkbox"/>	<input type="checkbox"/>
2403	Ditch	Linear NW-SE profile: 45 degrees base: concave dimensions: max breadth 0.8m, max depth 0.28m, min length 2.5m	<input checked="" type="checkbox"/>	<input type="checkbox"/>
2404	Fill	Mid grey brown silty clay moderate small-medium stones	<input checked="" type="checkbox"/>	<input checked="" type="checkbox"/>



Trench: 25

Max Dimensions: Length: 30.00 m. Width: 2.50 m. Depth to Archaeology Min: 0.43 m. Max: 0.55 m.

Co-ordinates: Easting: 52105925: Northing: 24266682

Easting: 52105830: Northing: 24263694

Reason: General coverage

Context:	Type:	Description:	Excavated:	Finds Present:
2500	Ploughsoil	Dark grey brown silty clay frequent small stones The deposit was 0.33m thick	<input checked="" type="checkbox"/>	<input type="checkbox"/>
2501	Subsoil	Mid orange brown silty clay The deposit was between 0.1m and 0.22m thick	<input checked="" type="checkbox"/>	<input type="checkbox"/>
2502	Natural	Mid yellow brown silty clay frequent flecks chalk	<input type="checkbox"/>	<input type="checkbox"/>
2503	Posthole	Oval profile: near vertical base: concave dimensions: max length 0.39m, max breadth 0.3m, max depth 0.11m	<input checked="" type="checkbox"/>	<input type="checkbox"/>
2504	Fill	Mid grey brown silty clay occasional small stones	<input checked="" type="checkbox"/>	<input type="checkbox"/>
2505	Posthole	Oval dimensions: max length 0.7m, max breadth 0.4m	<input type="checkbox"/>	<input type="checkbox"/>
2506	Fill	Mid grey brown silty clay frequent small-medium stones	<input type="checkbox"/>	<input type="checkbox"/>
2507	Ditch	Linear NW-SE profile: irregular base: concave dimensions: max breadth 0.55m, max depth 0.29m, min length 3.5m	<input checked="" type="checkbox"/>	<input type="checkbox"/>
2508	Fill	Mid orange brown silty clay moderate small-medium stones	<input checked="" type="checkbox"/>	<input type="checkbox"/>
2509	Furrow	Linear NE-SW profile: irregular base: uneven dimensions: max breadth 2.65m, max depth 0.25m, min length 2.2m	<input checked="" type="checkbox"/>	<input type="checkbox"/>
2510	Fill	Mid orange brown silty clay moderate small-medium stones	<input checked="" type="checkbox"/>	<input type="checkbox"/>
2511	Furrow	Linear NE-SW dimensions: max breadth 1.6m, min length 2.m	<input type="checkbox"/>	<input type="checkbox"/>
2512	Fill	Mid orange brown silty clay moderate small-medium stones	<input type="checkbox"/>	<input type="checkbox"/>



Trench: 26

Max Dimensions: Length: 30.00 m. Width: 2.50 m. Depth to Archaeology Min: 0.44 m. Max: 0.47 m.

Co-ordinates: Easting: 52108602: Northing: 24265290

Easting: 52111102: Northing: 24263654

Reason: General coverage

Context:	Type:	Description:	Excavated:	Finds Present:
2600	Ploughsoil	Dark brown grey silty clay frequent small-medium stones The deposit was 0.33m thick	<input checked="" type="checkbox"/>	<input type="checkbox"/>
2601	Subsoil	Mid grey brown silty clay frequent flecks chalk, frequent small stones The deposit was between 0.11m and 0.15m thick	<input checked="" type="checkbox"/>	<input type="checkbox"/>
2602	Natural	Firm light yellow brown silty clay	<input type="checkbox"/>	<input type="checkbox"/>
2603	Treethrow	Sub-oval profile: irregular base: uneven dimensions: max breadth 1.4m, max length 1.8m, max depth 0.22m	<input checked="" type="checkbox"/>	<input type="checkbox"/>
2604	Lower fill	Mid orange brown silty clay moderate flecks chalk, occasional small stones	<input checked="" type="checkbox"/>	<input type="checkbox"/>
2605	Upper fill	Light yellow brown silty clay moderate small stones	<input checked="" type="checkbox"/>	<input type="checkbox"/>
2606	Furrow	Linear NE-SW dimensions: max breadth 1.6m, min length 2.m	<input type="checkbox"/>	<input type="checkbox"/>
2607	Fill	Mid grey brown silty clay frequent small stones	<input type="checkbox"/>	<input type="checkbox"/>
2608	Furrow	Linear NE-SW dimensions: max breadth 1.5m, min length 2.m	<input type="checkbox"/>	<input type="checkbox"/>
2609	Fill	Mid grey brown silty clay frequent small stones	<input type="checkbox"/>	<input type="checkbox"/>



Trench: 27

Max Dimensions: Length: 30.00 m. Width: 2.50 m. Depth to Archaeology Min: 0.33 m. Max: 0.46 m.

Co-ordinates: Easting: 52106087: Northing: 24269506

Easting: 52109088: Northing: 24269479

Reason: General coverage

Context:	Type:	Description:	Excavated:	Finds Present:
2700	Ploughsoil	Dark grey brown silty clay occasional small-medium stones The deposit was between 0.28m and 0.31m thick	<input checked="" type="checkbox"/>	<input type="checkbox"/>
2701	Subsoil	Mid orange brown silty clay occasional small-medium stones The deposit was between 0.05m and 0.15m thick	<input checked="" type="checkbox"/>	<input type="checkbox"/>
2702	Natural	Mid yellow brown silty clay occasional gravel patches	<input type="checkbox"/>	<input type="checkbox"/>
2703	Posthole	Oval profile: concave base: concave dimensions: max breadth 0.3m, max length 0.6m	<input checked="" type="checkbox"/>	<input type="checkbox"/>
2704	Fill	Mid brown yellow silty clay moderate medium stones	<input checked="" type="checkbox"/>	<input type="checkbox"/>
2705	Treethrow	Irregular dimensions: max length 2.2m, max breadth 1.25m	<input type="checkbox"/>	<input type="checkbox"/>
2706	Fill	Mid brown grey silty clay moderate small-medium stones	<input type="checkbox"/>	<input type="checkbox"/>
2707	Treethrow	Irregular dimensions: max length 0.85m, max breadth 0.58m	<input type="checkbox"/>	<input type="checkbox"/>
2708	Fill	Mid brown grey silty clay moderate small-medium stones	<input type="checkbox"/>	<input type="checkbox"/>
2709	Furrow	Linear NE-SW dimensions: max breadth 2.5m	<input type="checkbox"/>	<input type="checkbox"/>
2710	Fill	Mid orange brown silty clay moderate small-medium stones	<input type="checkbox"/>	<input type="checkbox"/>
2711	Furrow	Linear NE-SW dimensions: max breadth 2.05m	<input type="checkbox"/>	<input type="checkbox"/>
2712	Fill	Mid orange brown silty clay moderate small-medium stones	<input type="checkbox"/>	<input type="checkbox"/>



Trench: 28

Max Dimensions: Length: 30.00 m. Width: 2.50 m. Depth to Archaeology Min: 0.36 m. Max: 0.53 m.

Co-ordinates: Easting: 52099965: Northing: 24269911

Easting: 52099817: Northing: 24266912

Reason: Area of enclosure cropmarks

Context:	Type:	Description:	Excavated:	Finds Present:
2800	Ploughsoil	Dark grey brown silty clay frequent small-medium stones The deposit was 0.26m thick	<input checked="" type="checkbox"/>	<input type="checkbox"/>
2801	Subsoil	Mid orange brown silty clay frequent small stones The deposit was between 0.1m and 0.28m thick	<input checked="" type="checkbox"/>	<input type="checkbox"/>
2802	Natural	Light yellow brown silty clay frequent gravel patches	<input type="checkbox"/>	<input type="checkbox"/>
2803	Ditch	Linear E-W profile: 45 degrees base: concave dimensions: max breadth 1.7m, max depth 0.52m, min length 2.5m	<input checked="" type="checkbox"/>	<input type="checkbox"/>
2804	Lower fill	Mid brown orange silty clay occasional small stones	<input checked="" type="checkbox"/>	<input type="checkbox"/>
2805	Lower fill	Mid grey orange silty clay frequent small stones	<input checked="" type="checkbox"/>	<input type="checkbox"/>
2806	Main fill	Mid grey brown silty clay moderate small stones contains a small quantity of animal bone	<input checked="" type="checkbox"/>	<input checked="" type="checkbox"/>
2807	Upper fill	Mid grey brown silty clay occasional small stones contains a small quantity of animal bone	<input checked="" type="checkbox"/>	<input checked="" type="checkbox"/>
2808	Furrow	Linear NE-SW dimensions: max breadth 2.m, min length 3.25m	<input type="checkbox"/>	<input type="checkbox"/>
2809	Fill	Mid grey brown silty clay frequent small-medium stones	<input type="checkbox"/>	<input type="checkbox"/>
2810	Furrow	Linear NE-SW dimensions: max breadth 1.6m, min length 3.m	<input type="checkbox"/>	<input type="checkbox"/>
2811	Fill	Mid grey brown silty clay frequent small-medium stones	<input type="checkbox"/>	<input type="checkbox"/>



Trench: 29

Max Dimensions: Length: 30.00 m. Width: 2.50 m. Depth to Archaeology Min: 0.35 m. Max: 0.39 m.

Co-ordinates: Easting: 52104425: Northing: 24274061

Easting: 52107425: Northing: 24273858

Reason: General coverage

Context:	Type:	Description:	Excavated:	Finds Present:
2900	Ploughsoil	Mid grey brown silty clay moderate small-medium stones The deposit was 0.25m thick	<input checked="" type="checkbox"/>	<input type="checkbox"/>
2901	Subsoil	Mid orange brown silty clay The deposit was between 0.1m and 0.14m thick	<input checked="" type="checkbox"/>	<input type="checkbox"/>
2902	Natural	Light orange yellow silty clay frequent gravel patches	<input type="checkbox"/>	<input type="checkbox"/>
2903	Furrow	Linear NE-SW dimensions: max breadth 2.m, max length 3.2m, max depth 0.32m	<input checked="" type="checkbox"/>	<input type="checkbox"/>
2904	Fill	Mid orange brown silty clay moderate small-medium stones	<input checked="" type="checkbox"/>	<input type="checkbox"/>



Trench: 30

Max Dimensions: Length: 30.00 m. Width: 2.50 m. Depth to Archaeology Min: 0.45 m. Max: 0.5 m.

Co-ordinates: Easting: 52098978: Northing: 24272694

Easting: 52100532: Northing: 24275263

Reason: Area of enclosure cropmarks

Context:	Type:	Description:	Excavated:	Finds Present:
3000	Ploughsoil	Dark grey brown silty clay The deposit was between 0.25m and 0.3m thick	<input checked="" type="checkbox"/>	<input type="checkbox"/>
3001	Subsoil	Mid orange brown silty clay The deposit was 0.2m thick	<input checked="" type="checkbox"/>	<input type="checkbox"/>
3002	Natural	Light yellow orange clay gravel Very mixed orange / yellow clay and gravel	<input type="checkbox"/>	<input type="checkbox"/>
3003	Furrow	Linear NE-SW dimensions: max breadth 2.m, min length 5.m	<input type="checkbox"/>	<input type="checkbox"/>
3004	Fill	Mid orange brown silty clay occasional small-medium stones	<input type="checkbox"/>	<input type="checkbox"/>



Trench: 31

Max Dimensions: Length: 40.00 m. Width: 5.00 m. Depth to Archaeology Min: 0.45 m. Max: 0.5 m.

Co-ordinates: Easting: 52094655: Northing: 24271898

Easting: 52098600: Northing: 24271208

Reason: Area of enclosure cropmarks

Context:	Type:	Description:	Excavated:	Finds Present:
3100	Ploughsoil	Dark grey brown silty clay moderate small stones The deposit was 0.3m thick	<input checked="" type="checkbox"/>	<input type="checkbox"/>
3101	Subsoil	Mid orange brown silty clay moderate small-medium stones The deposit was between 0.15m and 0.2m thick	<input checked="" type="checkbox"/>	<input type="checkbox"/>
3102	Natural	Mid yellow brown clay gravel frequent small stones, moderate medium stones	<input type="checkbox"/>	<input type="checkbox"/>
3103	Ditch	Linear NE-SW profile: concave base: concave dimensions: max breadth 3.2m, max depth 0.32m, min length 5.8m	<input checked="" type="checkbox"/>	<input type="checkbox"/>
3104	Fill	Mid grey brown silty clay occasional small stones contains small fragments of CBM and two iron nails	<input checked="" type="checkbox"/>	<input checked="" type="checkbox"/>
3105	Furrow	Linear NE-SW profile: concave base: uneven dimensions: max breadth 1.42m, max depth 0.19m	<input checked="" type="checkbox"/>	<input type="checkbox"/>
3106	Fill	Light yellow brown silty clay	<input checked="" type="checkbox"/>	<input type="checkbox"/>
3107	Treethrow	Sub-oval profile: irregular base: concave dimensions: max breadth 0.77m, max depth 0.19m, min length 1.5m	<input checked="" type="checkbox"/>	<input type="checkbox"/>
3108	Lower fill	Mid orange brown silty clay occasional small-medium stones	<input checked="" type="checkbox"/>	<input type="checkbox"/>
3109	Upper fill	Dark grey brown silty clay occasional small-medium stones	<input checked="" type="checkbox"/>	<input type="checkbox"/>
3110	Furrow	Linear NE-SW profile: irregular base: concave dimensions: max breadth 1.56m, max depth 0.21m	<input checked="" type="checkbox"/>	<input type="checkbox"/>
3111	Lower fill	Light orange brown silty clay occasional small stones	<input checked="" type="checkbox"/>	<input type="checkbox"/>
3112	Upper fill	Mid orange brown silty clay occasional small stones	<input checked="" type="checkbox"/>	<input type="checkbox"/>
3113	Ditch	Linear NE-SW profile: concave base: concave dimensions: min breadth 0.95m, max depth 0.45m, min length 5.8m	<input checked="" type="checkbox"/>	<input type="checkbox"/>
3114	Fill	Mid grey brown silty clay occasional small stones	<input checked="" type="checkbox"/>	<input type="checkbox"/>
3115	Ditch	Linear NW-SE dimensions: max breadth 1.6m, min length 3.5m	<input type="checkbox"/>	<input type="checkbox"/>
3116	Fill	Mid orange brown silty clay moderate small-medium stones	<input type="checkbox"/>	<input type="checkbox"/>



Trench: 32

Max Dimensions: Length: 30.00 m. Width: 2.50 m. Depth to Archaeology Min: 0.19 m. Max: 0.57 m.

Co-ordinates: Easting: 52097723: Northing: 24286035

Easting: 52099453: Northing: 24283589

Reason: General coverage

Context:	Type:	Description:	Excavated:	Finds Present:
3200	Ploughsoil	Dark brown grey silty clay The deposit was between 0.19m and 0.31m thick	<input checked="" type="checkbox"/>	<input type="checkbox"/>
3201	Subsoil	Dark brown clay silt The deposit was 0.21m thick	<input checked="" type="checkbox"/>	<input type="checkbox"/>
3202	Subsoil	Mid orange brown silty clay The deposit was between 0.05m and 0.13m thick	<input checked="" type="checkbox"/>	<input type="checkbox"/>
3203	Natural	Light brown orange clay gravel large gravel and cobbles at northwest end of trench	<input type="checkbox"/>	<input type="checkbox"/>



Trench: 33

Max Dimensions: Length: 30.00 m. Width: 2.50 m. Depth to Archaeology Min: 0.35 m. Max: 0.39 m.

Co-ordinates: Easting: 52100871: Northing: 24278845

Easting: 52103359: Northing: 24277141

Reason: General coverage

Context:	Type:	Description:	Excavated:	Finds Present:
3300	Ploughsoil	Dark grey brown silty clay occasional small-medium stones The deposit was 0.26m thick	<input checked="" type="checkbox"/>	<input type="checkbox"/>
3301	Subsoil	Mid orange brown silty clay occasional small-medium stones The deposit was between 0.09m and 0.15m thick	<input checked="" type="checkbox"/>	<input type="checkbox"/>
3302	Natural	Mid orange clay moderate small-medium stones Occasional gravel patches	<input type="checkbox"/>	<input type="checkbox"/>
3303	Ditch	Linear ENE-WSW profile: concave base: concave dimensions: max breadth 2.6m, max depth 0.44m, min length 2.6m contains a small quantity of animal bone	<input checked="" type="checkbox"/>	<input type="checkbox"/>
3304	Fill	Mid orange brown silty clay moderate small stones, occasional medium stones	<input checked="" type="checkbox"/>	<input checked="" type="checkbox"/>



FIGURES

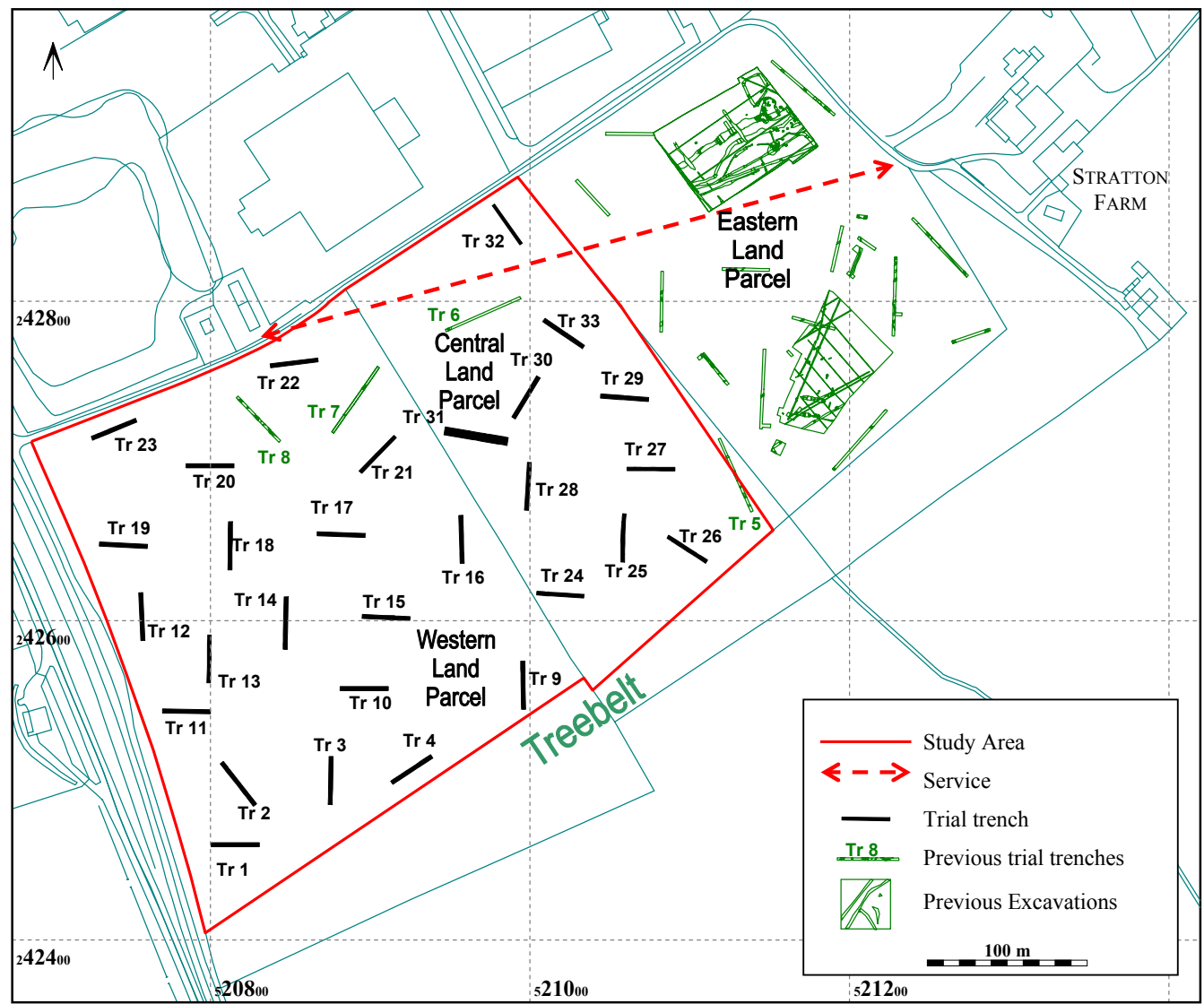
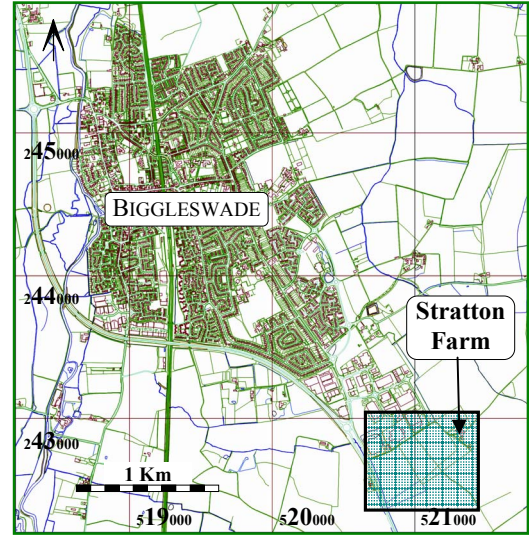
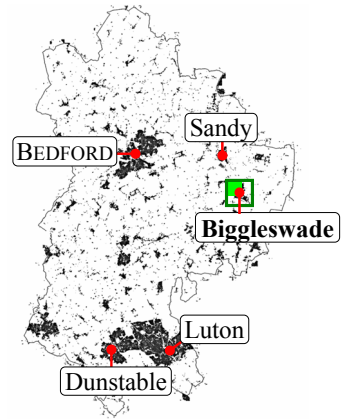


Figure 1: Site location map

Base map reproduced from the Ordnance Survey Land-line Map (2004), with the permission of the Controller of Her Majesty's Stationery Office, by Bedfordshire County Council, County Hall, Bedford. OS Licence No. 100017358. © Crown Copyright.

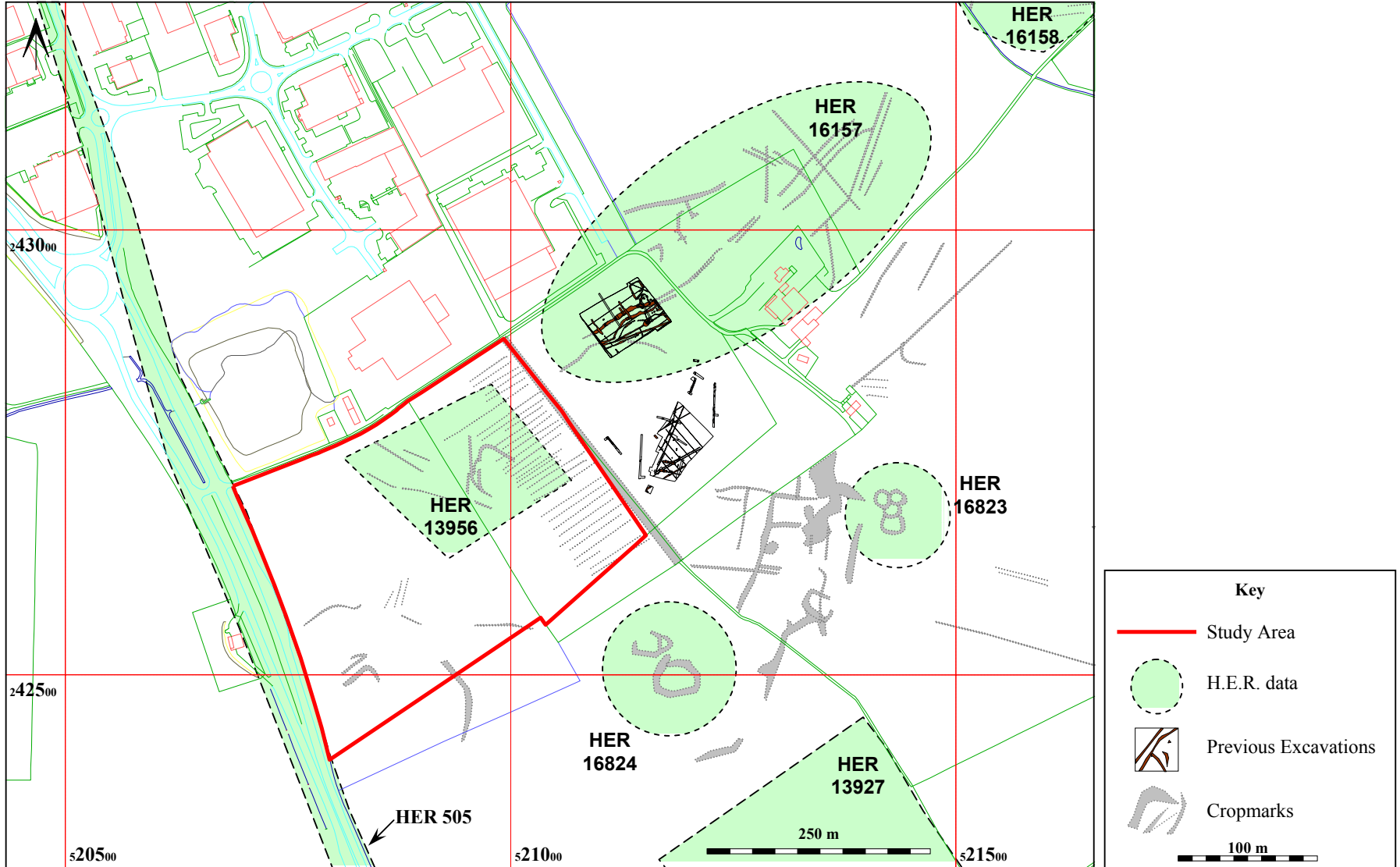


Figure 2: Previously recorded archaeological remains.

Base map reproduced from the Ordnance Survey Land-line Map (2004), with the permission of the Controller of Her Majesty's Stationery Office, by Bedfordshire County Council, County Hall, Bedford. OS Licence No. 100017358. © Crown Copyright.

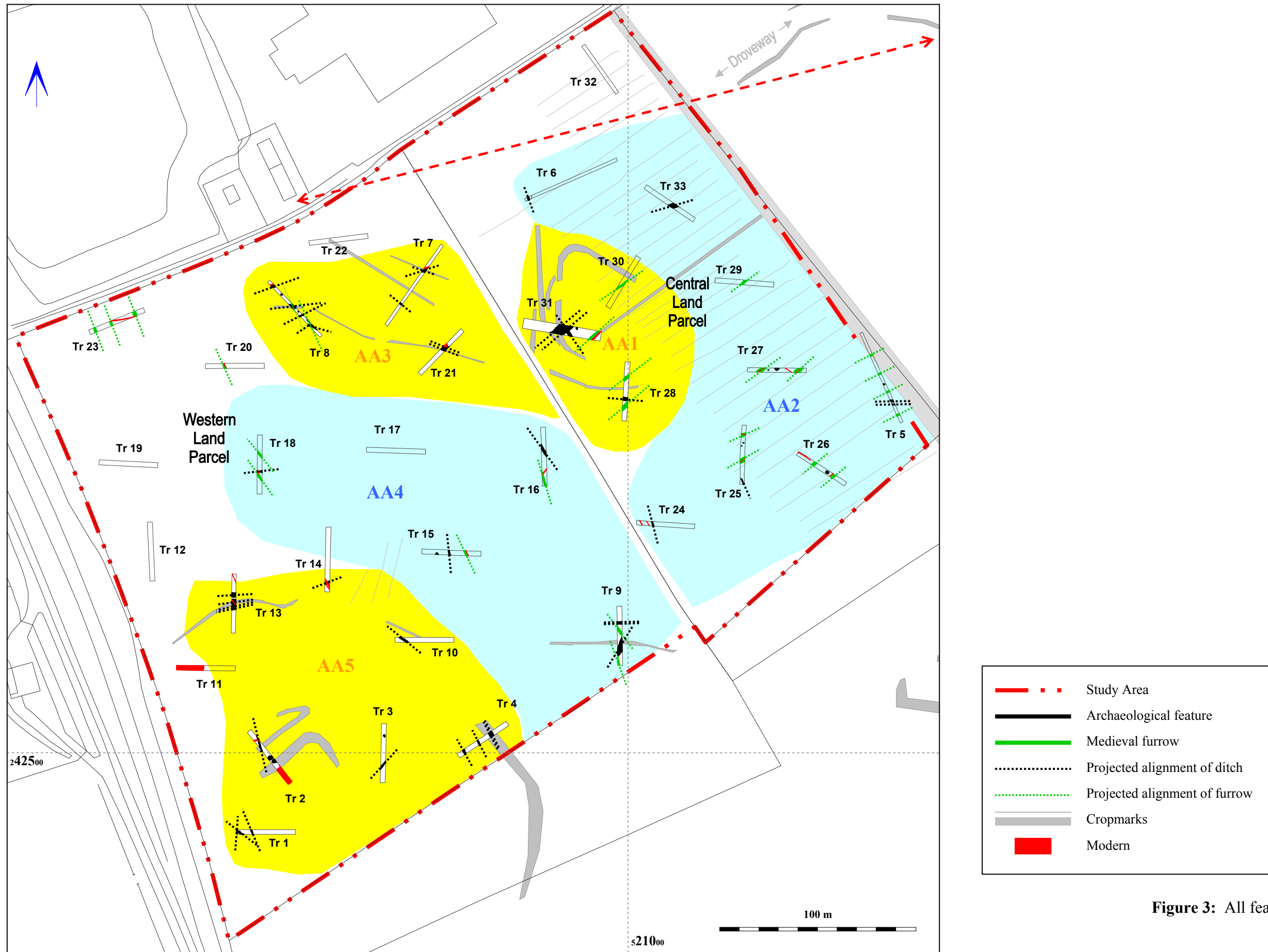
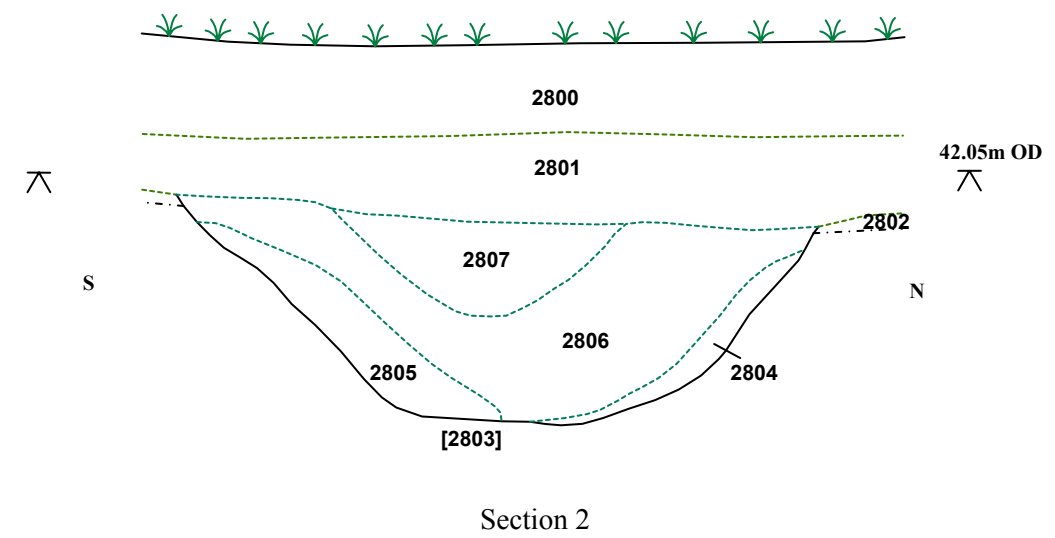
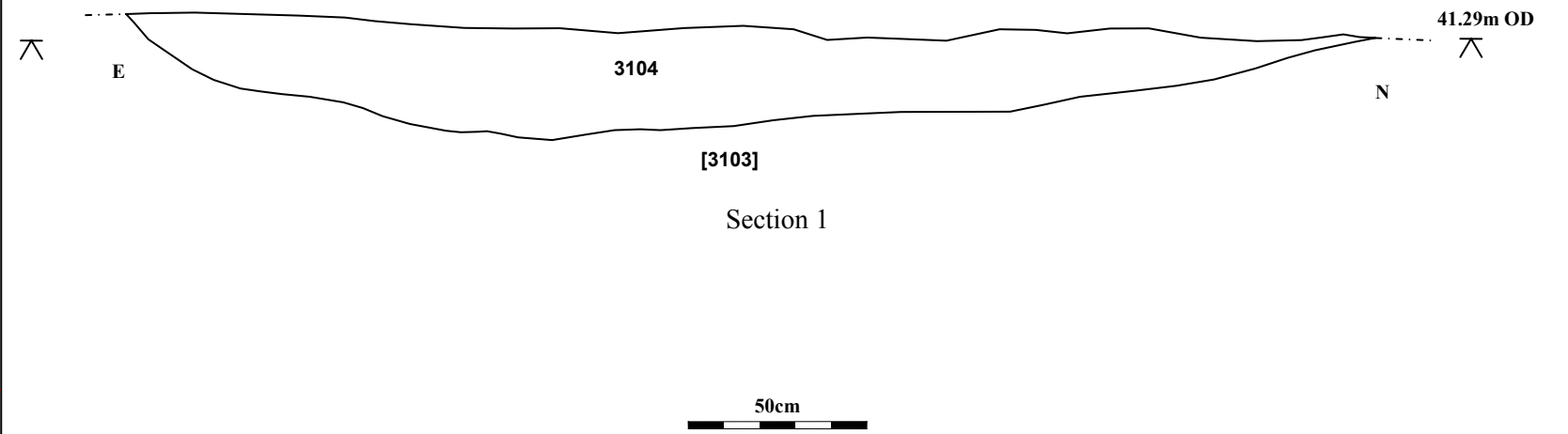
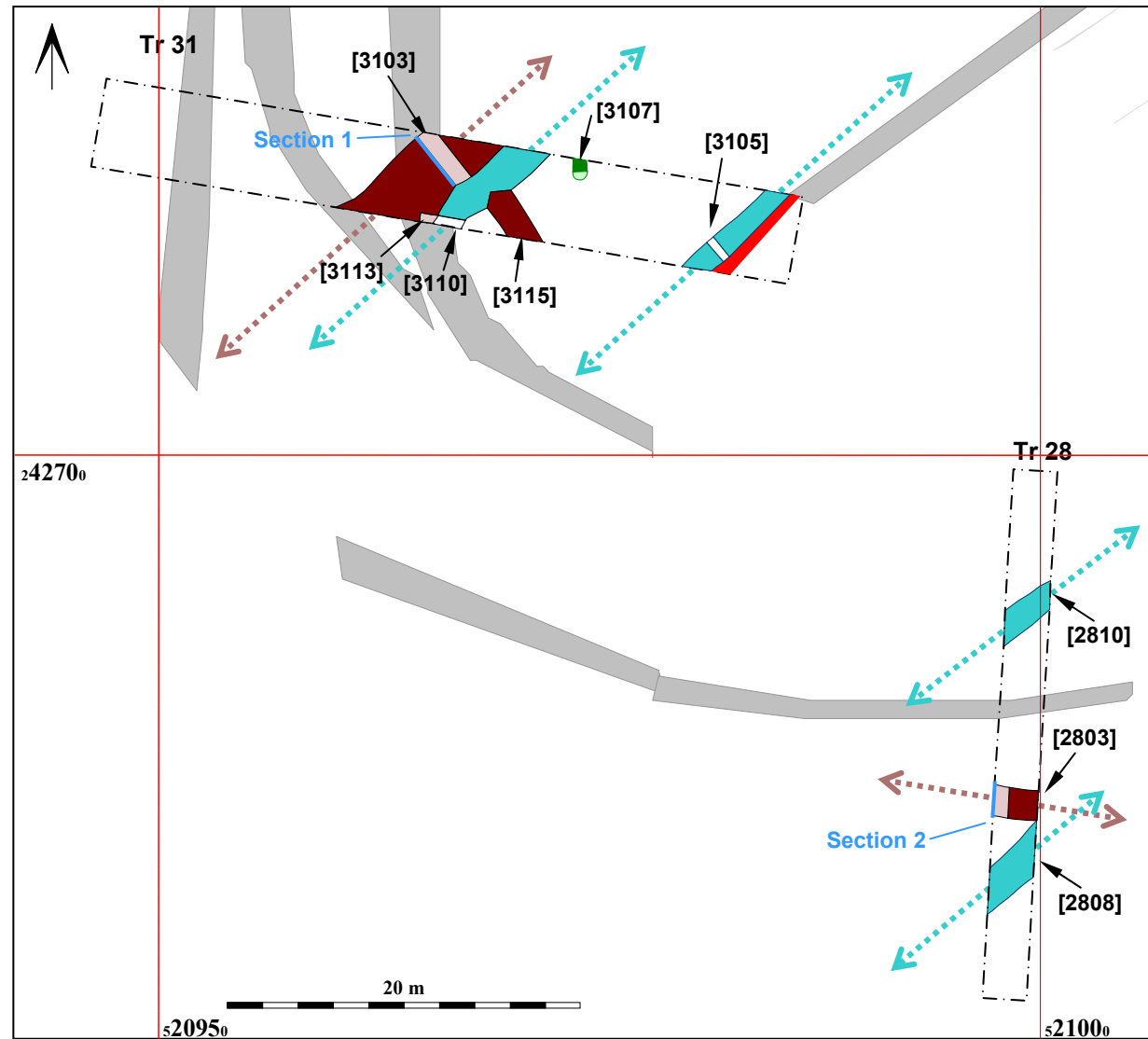


Figure 3: All features plan showing Archaeological Areas (AA)

Base map reproduced from the Ordnance Survey Land-line Map (2004), with the permission of the Controller of Her Majesty's Stationery Office, by Bedfordshire County Council, County Hall, Bedford. OS Licence No. 100017358. © Crown Copyright.



- Cropmark
- Archaeological Feature
- Archaeological Feature; excavated segment
- Modern Feature
- Treethrow
- Treethrow; excavated segment
- Furrow
- Furrow; excavated segment
- Projected alignment of linear feature

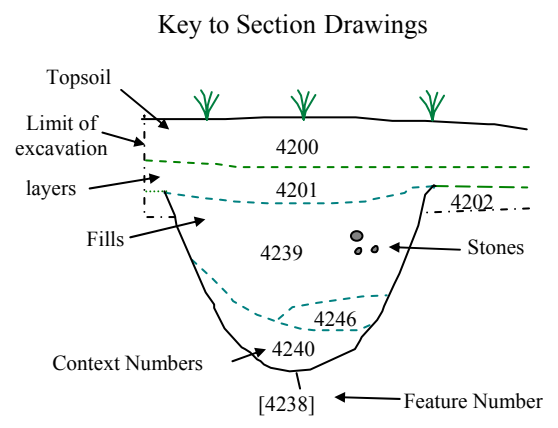
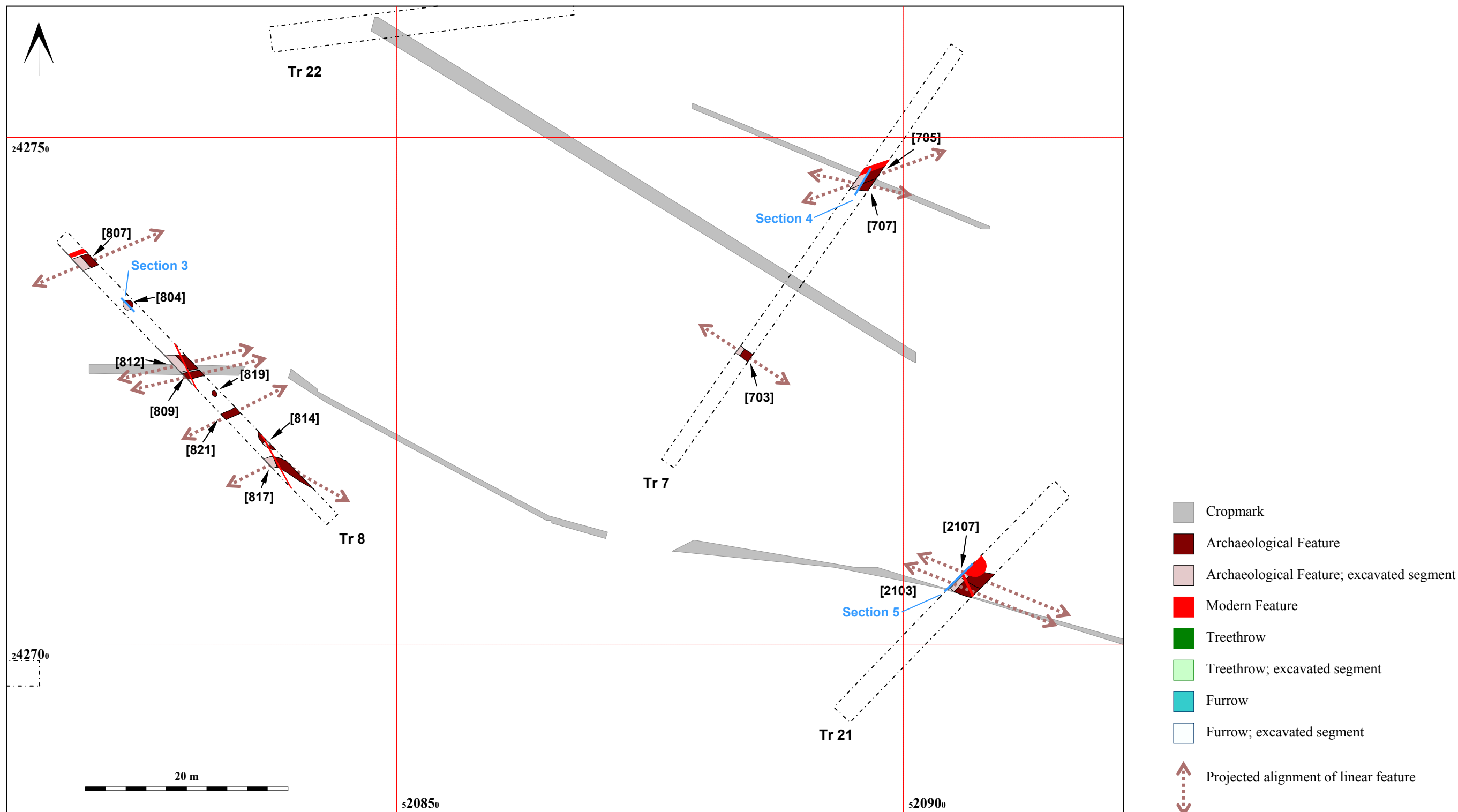


Figure 4: Central land parcel, Archaeological Area 1: Trenches 28 and 31.



Base map reproduced from the Ordnance Survey Land-line Map (2004), with the permission of the Controller of Her Majesty's Stationery Office, by Bedfordshire County Council, County Hall, Bedford. OS Licence No. 100017358. © Crown Copyright.

Figure 5: Western land parcel, Archaeological Area 3: Trenches 7, 8 and 21.

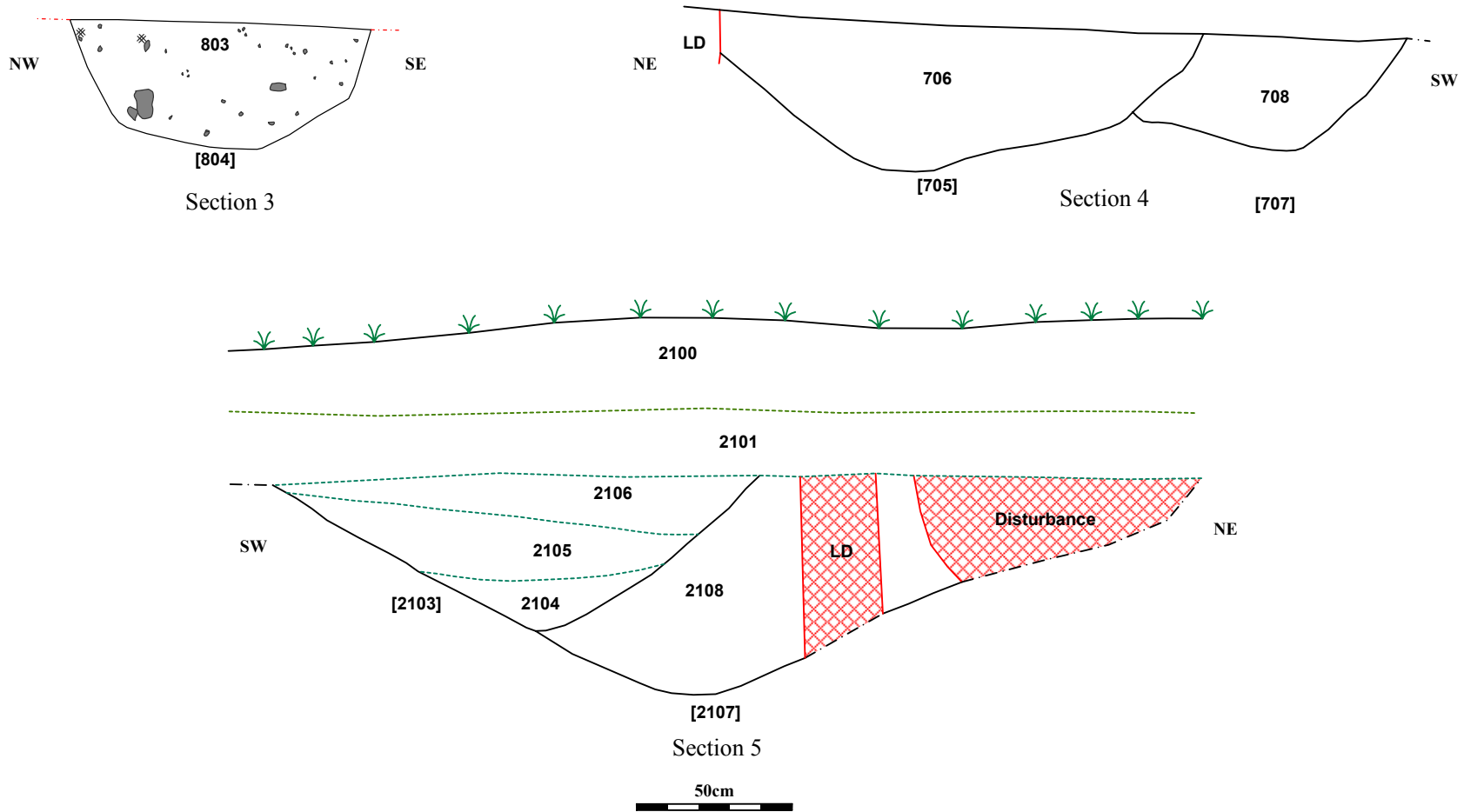
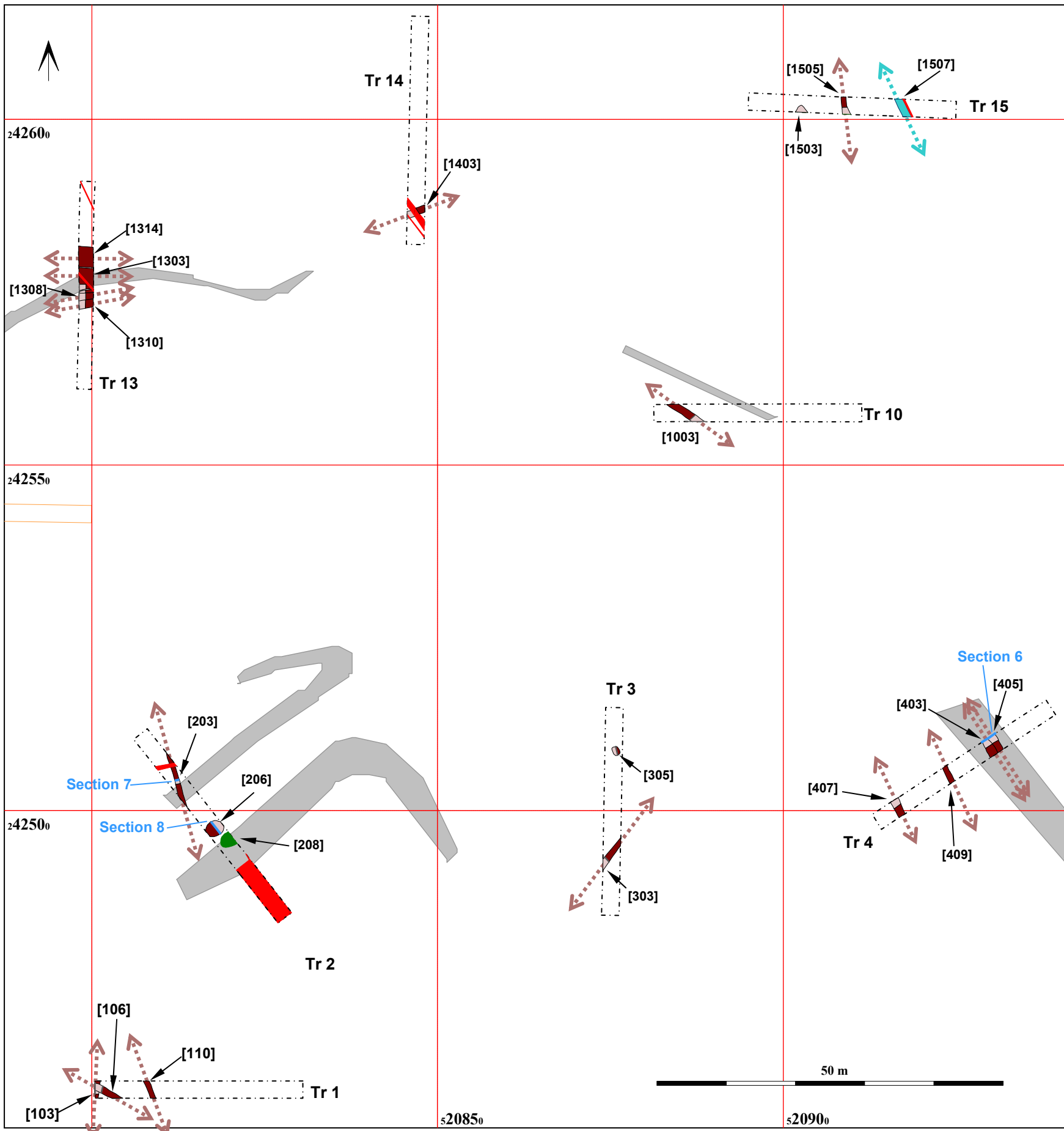


Figure 6: Western land parcel; selected sections



- Cropmark
- Archaeological Feature
- Archaeological Feature; excavated segment
- Modern Feature
- Tree throw hole
- Tree throw hole; excavated segment
- Furrow
- Furrow; excavated segment
- Projected alignment of linear feature

Figure 7: Western land parcel, Archaeological Area 5: Trenches 1 - 4, 10, 13 and 14

Base map reproduced from the Ordnance Survey Land-line Map (2004), with the permission of the Controller of Her Majesty's Stationery Office, by Bedfordshire County Council, County Hall, Bedford. OS Licence No. 100017358. © Crown Copyright.

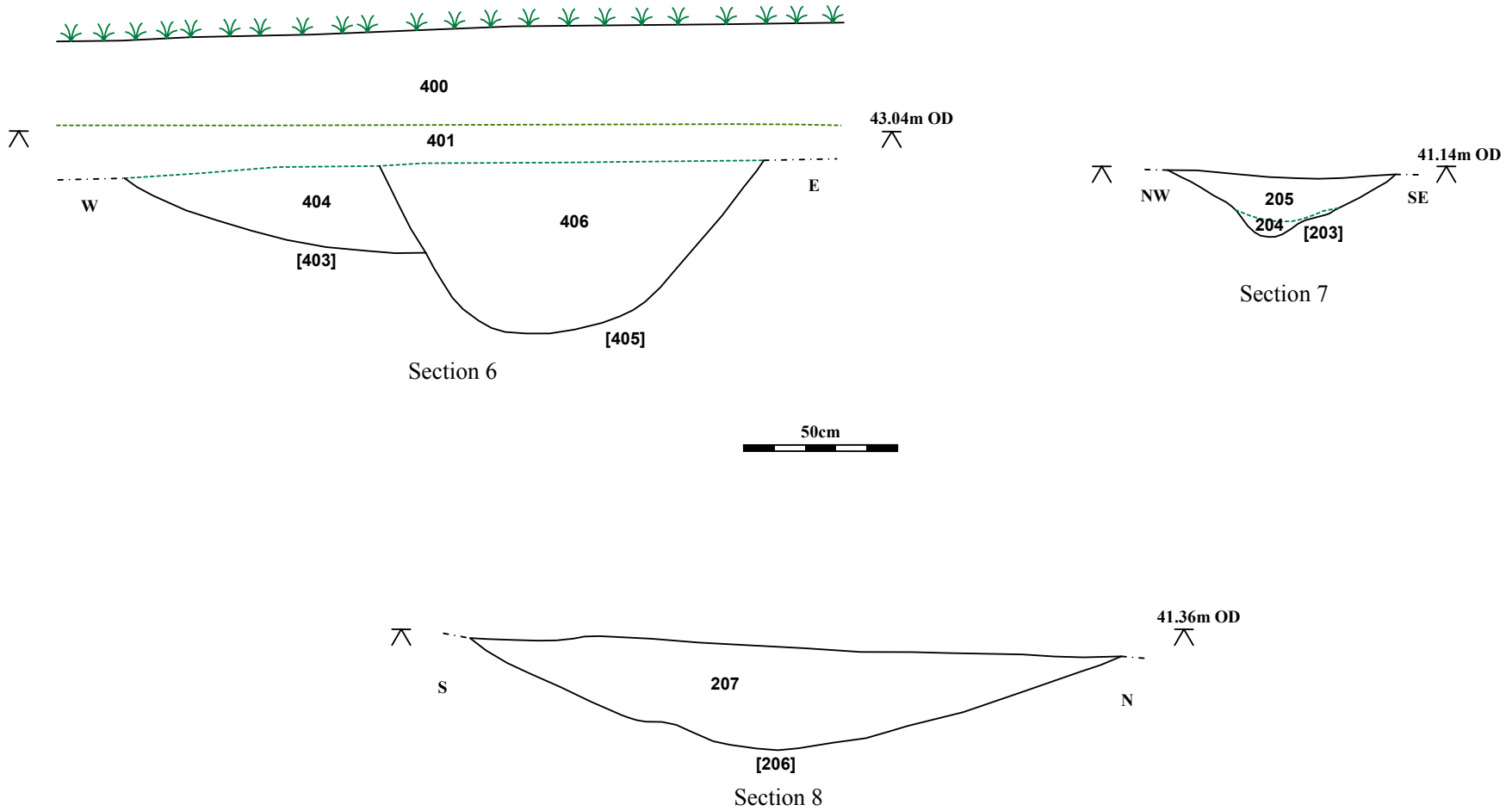


Figure 8: Western land parcel; selected sections



Plate 1: Trench 28 – Archaeological area 1: Ditch [2803]
Scale: 1 metre in 0.5m divisions



Plate 2: Trench 21 – Archaeological area 3: Ditch [2103] and [2107]
Scale: 1 metre in 0.5m divisions



Plate 3: Trench 1 – Archaeological area 5: Ditch [106]
Scale: 1 metre in 0.5m divisions



Plate 4: Trench 13 – Archaeological area 5: Ditch [1303]
Scale: 1 metre in 0.5m divisions



Plate 5: Pottery sherds from Ditch [1303]
Scale: 5cm in 1cm divisions



Plate 6: Pottery sherds from Pit [305]
Scale: 5cm in 1cm divisions