

HS2 Phase 2a Early Environmental Works

Site 335 - Geophysics Survey Report Heritage Non-intrusive Survey Reports Group 024

Document no: 2EE02-BAF-EV-REP-WS06-000022

Revision	Author	Reviewed by	Approved by	Date approved	Reason for revision
C01	Matt Berry	Sam Harrison	Alistair Webb	31/10/2022	1 st Issue

Methodology	Project Plan Site Code
Gradiometer (Magnetometer) Survey	2a20DRANMG

Security classification: OFFICIAL

HS2 Ltd - Code 1 - Accepted

Contents

1	Executive Summary	1
2	Introduction	2
2.1	Project Background	2
2.2	Scope of Document	2
2.3	The Site	2
3	Archaeological Background	4
3.1	Summary of the archaeological resource	4
4	Methodology	5
4.1	Magnetometry	5
4.2	Aims and Objectives	5
4.4	Fieldwork Methodology	6
4.5	Data processing	6
5	Geophysical Survey Results and Interpretation	7
5.1	Gradiometer survey results and interpretation	7
6	Discussion	8
	References	9
	Annex 1: Magnetometer survey	10
	Annex 2: Geophysical Interpretation	11
	Annex 3: OASIS Form	17

List of Figures

- Figure 1** Site location and GPS swaths
Figure 2 Processed greyscale magnetometer data
Figure 3 XY trace plot of minimally processed magnetometer data
Figure 4 Interpretation of magnetometer data
-

1 Executive Summary

- 1.1.1 This document comprises a Final Report for a non-intrusive geophysical survey on the route of the proposed Phase 2a of High Speed Two (HS2) covering land proposed for development or likely to be impacted during the scheme as part of the Early Environmental Works (EEW) package. This report contains the results of a magnetometer survey undertaken on 25th January 2022 at Site 335 within Group 024.
- 1.1.2 The aim of the survey is to establish the presence/absence, extent and character of detectable archaeological remains within the proposed route of HS2 Phase 2a. The scope of the surveys is dependent upon securing access to the land and for the areas to be suitable for survey.
- 1.1.3 EEW Group 024 is situated in the district of Cheshire of East, to the south-west of Betley Mere and west of the village of Wrinehill, Staffordshire. Site 335 is located approximately 580m south-west of the village of Wrinehill, and immediately east of Randilow Farm centred at NGR 374751 346651. The site consists of a single irregular shaped parcel encompassing c.1.8ha.
- 1.1.4 The HS2 Ltd Phase 2a GWSI: HERDS document identifies that EEW Group 024 is partially covered by two Recognised Archaeological Zones (RAZ), specifically RAZ 29 and RAZ 30. Both however lie outside of Site 335 and relate to Site 337 and Site 330 respectively.
- 1.1.5 All suitable areas within the Site were surveyed and no anomalies of clear archaeological potential have been identified. The Site is largely covered by a dense spread of magnetic disturbance likely caused by magnetic debris used to try and improve drainage on the site. This interpretation is supported by evidence of brick/rubble and other debris on the ground identified by the survey team. Given the strength of magnetic response it remains plausible responses from more weakly magnetic archaeological features could be masked if present in this area.
- 1.1.6 The only finding of note is a curvilinear anomaly of uncertain origin recorded at the southern boundary of the Site which is also the present field boundary. A modern service/drain remains the most likely cause of this feature however an archaeological cause cannot be ruled out based on the geophysics data alone.
- 1.1.7 Elsewhere a service pipe extending from the site boundary and farm to the west, towards the pond within the Site and two faint linear trends likely agricultural in origin are the only other identifiable anomalies in the survey data.

2 Introduction

2.1 Project Background

- 2.1.1 HS2 is a new railway network proposed by the Government to provide a new link between London, the West Midlands, the East Midlands, South Yorkshire, Leeds and Manchester. HS2 Phase 2a comprises approximately 36 miles of railway starting at Fradley at its southern end and connects with the West Coast Main Line (WCML), south of Crewe, to allow HS2 services to join the existing network and call at Crewe Station.
- 2.1.2 The overall framework within which archaeological work will be undertaken is set out in the draft Environmental Minimum Requirements (EMR) for HS2 Phase 2a. Accordingly, the nominated undertaker or any contractors will be required to implement certain control measures in relation to archaeology before construction work begins.
- 2.1.3 The works have been undertaken in accordance with Written Scheme of Investigation (WSI, HS2 2019) and conform with current best practice and guidance for geophysical surveys as outlined in the Chartered Institute for Archaeologists' (CIfA) Standard and Guidance for archaeological geophysical survey (CIfA 2014) and European Archaeologiae Consilium Guidelines for the use of Geophysics in Archaeology (EAC 2016).
- 2.1.4 The selection of areas required for geophysical survey included as part of this Early Environmental Works (EEW) package are set out in location specific Written Scheme of Investigations (WSIs) based on Groups containing individual sites. HS2 Ltd has provided each EEW site along the Phase 2a route with a unique identifier Site Code.
- 2.1.5 Within EEW Group 024 (HS2 2021) the Site Code for geophysical survey is:
- 2a20DRANMG

2.2 Scope of Document

- 2.2.1 This report presents a brief description of the methodology followed by the detailed survey results and the archaeological interpretation of the geophysical data.

2.3 The Site

- 2.3.1 EEW Group 024 is situated in the district of Cheshire of East, to the south-west of Betley Mere and west of the village of Wrinehill, Staffordshire. Site 335 is located approximately 580m south-west of the village of Wrinehill, and immediately east of Randilow Farm centred at NGR 374751 346651. The site consists of a single irregular shaped parcel within a single field encompassing c.1.8ha.
- 2.3.2 The survey area was fallow and contained maize stalks from the previous crop at the time of survey. Full coverage was achieved except for a pond and overgrown area towards the centre of the parcel.

- 2.3.3 Modern Ordnance Survey (OS) mapping indicates that there is gentle eastward slope from c.100m Above Ordnance Datum (aOD) along the western site boundary, to c. 90m aOD, along the eastern site boundary.
- 2.3.4 The solid geology across the Site is recorded as sedimentary, Northwich Halite Member halite-stone and mudstone. The site is covered by sedimentary sand and gravel glaciofluvial superficial deposits (BGS 2021).
- 2.3.5 The soils covering the Site are classified in Soilscape 6 Association described as freely draining slightly acid loamy soils (Cranfield University 2020).
- 2.3.6 Magnetometer survey can generally be recommended over any sedimentary geologies however the average responses of surveys over sandstones and mudstones are generally poor but results can be variable depending on the nature and depth of the overlying deposits if present (English Heritage 2008; Table 4). It remains that magnetometry was the most appropriate geophysical technique for evaluating the Site taking account of the limitations noted in Section 4.3 below.

3 Archaeological Background

3.1 Summary of the archaeological resource

- 3.1.1 The following archaeological background summarises details from the Location Specific Written Scheme of Investigation (LSWSI, HS2 2021) together with information from publicly available online resources and other in-house resources.
- 3.1.2 The Recognised Archaeological Zones (RAZ) represent a high-level indication of likely concentrations of archaeological remains across the Phase 2a route. The location and spatial extent of RAZs has been determined using HS2 Environmental Statement (ES) Cultural Heritage information and subsequent survey data.
- 3.1.3 The assessment and determination of the significance of archaeological assets is defined by Chapter 10 of the HS2 Ltd EIA Scope and Methodology Report (HS2 2017a). Additional information on the wider archaeological background can be found in the ES reports.
- 3.1.4 The HS2 Ltd Phase 2a GWSI: HERDS document identifies that EEW Group 024 is partially covered by two Recognised Archaeological Zones (RAZ), specifically RAZ 29 and RAZ 30. Both however lie outside of Site 335 and relate to Site 337 and Site 330 respectively.
- 3.1.5 The ES (HS2 2017b) records only one known archaeological asset immediately adjacent to Site 335 comprising:
- SCH077: An incised or sunken country lane of medieval or post-medieval origin.
- 3.1.6 The ES (HS2 2017b) identified no entries from the Cheshire Historic Environment Record (HER) within or in the vicinity of Site 335.
- 3.1.7 Site 335 is detailed in the Checkley-cum-Wrinehill Tithe map of 1844. The site appeared as an open field. The site boundaries were the similar to the present-day configuration. The Ordnance Survey 6": mile map of 1912 indicated that a pond was extant in the central site area by this time. The site configuration at this time appears similar to the present-day. No other archaeological features are evident from available historic mapping.

4 Methodology

4.1 Magnetometry

Magnetic survey methods rely on the ability of a variety of instruments to measure very small magnetic fields associated with buried archaeological remains. A feature such as a ditch, pit or kiln can act like a small magnet, or series of magnets, that produce distortions (anomalies) in the earth's magnetic field. In mapping these slight variations, detailed plans of sites can be obtained as buried features often produce reasonably characteristic anomaly shapes and strengths (Gaffney and Gater 2003). Further information on soil magnetism and the interpretation of magnetic anomalies is provided in Annex 1 and Annex 2 respectively.

4.2 Aims and Objectives

4.2.1 The aims of the survey comprise the following:

- To determine, as far as is reasonably possible, the nature of the detectable archaeological resource within a specified area using appropriate methods and practices; and
- To inform either the scope and nature of any further archaeological work that may be required; or the formation of a mitigation strategy (to offset the impact of the development on the archaeological resource); or a management strategy.

4.2.2 In order to achieve the above aims, the objectives of the geophysical survey are:

- To conduct a geophysical survey covering as much of the specified area as possible, allowing for on-site obstructions;
- To clarify the presence/absence of anomalies of archaeological potential; and
- Where possible, to determine the general nature of any anomalies of archaeological potential.

4.3 Assumptions and limitations

Magnetometry is the most widely used geophysical survey technique in archaeology as it can quickly evaluate large areas and, under favourable conditions, identify a wide range of archaeological features including infilled cut features such as large pits, gullies and ditches, hearths, and areas of burning and kilns and brick structures. It is therefore good at locating settlements of all periods, prehistoric field systems and enclosures and areas of industrial or modern activity, amongst others. It is less successful in identifying smaller features such as post-holes and small pits (except when using a non-standard sampling interval), unenclosed (prehistoric) settlement sites and graves/burial grounds. Magnetometry has the potential to rapidly confirm the presence/absence of a wide range of potential archaeological remains within the site and was thus chosen as the most appropriate technique in this instance.

4.4 Fieldwork Methodology

- 4.4.1 The survey was undertaken using four Bartington Grad601 sensors mounted at 1m intervals (1m traverse interval) onto a rigid carrying frame. The system was programmed to take readings at a frequency of 10Hz (allowing for a 10-15cm sample interval) on roaming traverses (swaths) 4m apart (Figure 1). These readings were stored on an external weatherproof laptop and later downloaded for processing and interpretation. The system was linked to a Trimble R8s Real Time Kinetic (RTK) differential Global Positioning System (dGPS) outputting in NMEA mode to ensure a high positional accuracy for each data point, in accordance with EAC guidelines (EAC 2016).
- 4.4.2 Unenclosed areas were surveyed using the co-ordinates of the pre-determined Site boundary visible as an outline on the MLGrad601 software during data collection.
- 4.4.3 MLGrad601 (Geomar Software Inc.) software was used to collect the data.

4.5 Data processing

- 4.5.1 Data collected using RTK GPS-based methods cannot be produced without minimal processing of the data. The minimally processed data has been interpolated to project the data onto a regular grid and de-striped to correct for slight variations in instrument calibration drift and any other artificial data.
- 4.5.2 A high pass filter has been applied to the greyscale plots to remove low frequency anomalies (relating to survey tracks and modern agricultural features) to maximise the clarity and interpretability of the archaeological anomalies.
- 4.5.3 The data has also been clipped to remove extreme values and to improve data contrast.
- 4.5.4 MultiGrad601 (Geomar Software Inc.) software was used to export the survey data files.
- 4.5.5 Terrasurveyor V3.0.37.0 (DWConsulting) software was used to process and export graphical plots the data.

5 Geophysical Survey Results and Interpretation

5.1 Gradiometer survey results and interpretation

- 5.1.1 The magnetometer survey was carried out on the 25th January 2022 and full coverage of the survey area was achieved totalling 1.6ha.
- 5.1.2 Fully processed (greyscale) data, minimally processed data (XY trace plot) and interpretative plans are presented at a scale of 1:1,000 in Figures 2 – 4 inclusive.
- 5.1.3 Where not covered by magnetic disturbance the magnetic background appears relatively uniform containing few occasional low magnitude discrete anomalies likely deriving from the underlying sandstone geology and overlying glaciofluvial deposits.
- 5.1.4 A large spread of magnetic disturbance covers a majority of the survey area. Surveyors noticed a large amount of brick/rubble spread across this undulating poorly draining area which may have been added to improve drainage of the field. There is no evidence in the historic mapping to indicate the presence of a former structure in this location.
- 5.1.5 A curvilinear, slightly fragmentary anomaly of variable magnetic response is recorded adjacent Checkley Lane at the southern boundary of the field. Based on the magnetic signature of the anomaly and position following the southern boundary of the field some form of service or drain is the most likely interpretation, though without an obviously ferrous component an archaeological cause cannot be discounted.
- 5.1.6 Elsewhere a service pipe extends from the western boundary towards an un-surveyed area towards the centre of the field identifying the location of a pond recorded on historic OS mapping. Two linear trend anomalies are likely result of agricultural ploughing.

6 Discussion

- 6.1 The survey has not identified any anomalies of clear archaeological potential. The Site is largely covered by a dense spread of magnetic disturbance likely caused by magnetic debris used to try and improve drainage on the site. This interpretation is supported by evidence of brick/rubble and other debris on the ground in this location by the survey team. Given the strength of magnetic response it is plausible responses from more weakly magnetic archaeological features could be masked if present in this area.
- 6.2 The origin of a curvilinear anomaly recorded at the southern boundary of the Site which respects the present boundary remains uncertain, though a modern service/drain remains the most likely cause of this feature. An archaeological cause cannot be ruled out based on the geophysics data alone.
- 6.3 The only other findings consist of a service pipe extending from the site boundary and farm to the west to the pond within the Site and two faint linear trends likely agricultural in origin.

References

Bibliography

British Geological Survey (BGS) 2022 Geology of Britain 3D <http://www.bgs.ac.uk/> accessed 18th July 2022

Chartered Institute for Archaeologists (CIfA) 2014 Standard and guidance for archaeological geophysical survey (Reading)
https://www.archaeologists.net/sites/default/files/CIfAS%26GGeophysics_3.pdf accessed 18th July 2022

Cranfield University 2020 Cranfield Soil and Agrifood Institute Soilscales
<http://www.landis.org.uk/soilscales/> accessed 18th July 2022

English Heritage 2008 Geophysical Survey in Archaeological Field Evaluation

Europae Archaeologia Consillium (EAC) 2016 EAC Guidelines for the Use of Geophysics in Archaeology: Question to Ask and Points to Consider (Namur, Belgium) <https://www.europae-archaeologiae-consilium.org/eac-guidlines> accessed 18th July 2022

Gaffney C & Gater J 2003 Revealing the Buried Past: Geophysics for Archaeologists Stroud

HS2 Ltd, 2017a High Speed Rail (West Midlands-Crewe). Environmental Statement. Volume 5: Technical appendices. Environment Impact Assessment Scope and Methodology Report (CT-001-001). Available at: <https://www.gov.uk/government/publications/scope-and-methodology-report-for-hs2-phase-2a>

HS2 Ltd, 2017b High Speed Rail (West Midlands-Crewe). Environmental Statement. Volume 5: Technical appendices. CA4: Whitmore Heath to Madeley. Gazetteer of heritage assets. (CH-002-004). Available at: <https://www.gov.uk/government/collections/hs2-phase-2a-environmental-statement#volume-5:-environmental-reports-and-maps-by-community-area>

HS2 2019 HS2 Phase 2a Written Scheme of Investigation for EI-711 Surveys Package 1: Magnetometry (HS2-HS2-EV-MST-A000001)

HS2, 2021, Phase 2a LS-WSI: EEW Group 024, EEW Sites 330, 331, 335 & 337 (HS2 Document no: 2EE01-BAF-EV-PRO-A000-000053, Revision: 03)

Annex 1: Magnetometer survey

Magnetic susceptibility and soil magnetism

Iron makes up about 6% of the earth's crust and is mostly present in soils and rocks as minerals such as maghaemite and haematite. These minerals have a weak, measurable magnetic property termed magnetic susceptibility. Human activities can redistribute these minerals and change (enhance) others into more magnetic forms so that by measuring the magnetic susceptibility of the topsoil, areas where human occupation or settlement has occurred can be identified by virtue of the attendant increase (enhancement) in magnetic susceptibility. If the enhanced material subsequently comes to fill features, such as ditches or pits, localised isolated and linear magnetic anomalies can result whose presence can be detected by a magnetometer (fluxgate gradiometer).

In general, it is the contrast between the magnetic susceptibility of deposits filling cut features, such as ditches or pits, and the magnetic susceptibility of the topsoil, subsoil and rock, into which these features have been cut, which causes the most recognisable responses. This is primarily because there is a tendency for magnetic ferrous compounds to become concentrated in the topsoil, thereby making it more magnetic than the subsoil or the bedrock. Linear features cut into the subsoil or geology, such as ditches, that have been silted up or have been backfilled with topsoil will therefore usually produce a positive magnetic response relative to the background soil levels. Discrete feature, such as pits, can also be detected.

The magnetic susceptibility of a soil can also be enhanced by the application of heat. This effect can lead to the detection of features such as hearths, kilns, or areas of burning.

Annex 2: Geophysical Interpretation

Most anomalies are termed 'positive'. This means that they have a positive magnetic value relative to the magnetic background on any given site. However, some features can manifest themselves as 'negative' anomalies that, conversely, means that the response is negative relative to the mean magnetic background.

Where it is not possible to give a probable cause of an observed anomaly a '?' is appended. It should be noted that anomalies interpreted as modern in origin might be caused by features that are present in the topsoil or upper layers of the subsoil. Removal of soil to an archaeological or natural layer can therefore remove the feature causing the anomaly.

The types of response mentioned above can be divided into five main categories that are used in the graphical interpretation of the magnetic data:

Isolated dipolar anomalies (iron spikes)

These responses are typically caused by ferrous material either on the surface or in the topsoil. They cause a rapid variation in the magnetic response giving a characteristic 'spiky' trace. Although ferrous archaeological artefacts could produce this type of response, unless there is supporting evidence for an archaeological interpretation, little emphasis is normally given to such anomalies, as modern ferrous objects are common on rural sites, often being introduced into the soil during manuring.

Areas of magnetic disturbance

These responses can have several causes often being associated with burnt material, such as slag waste or brick rubble or other strongly magnetised/fired material. Ferrous structures such as pylons, mesh or barbed wire fencing and buried pipes can also cause the same disturbed response. A modern origin is usually assumed unless there is other supporting information.

Lightning-induced remnant magnetisation (LIRM)

LIRM anomalies are thought to be caused in the near surface soil horizons by the flow of an electrical current associated with lightning strikes. These observed anomalies have a strong bipolar signal which decreases with distance from the spike point and often appear as linear or radial in shape.

Linear trend

This is usually a weak or broad linear anomaly of unknown cause or date. These anomalies are often caused by agricultural activity, either ploughing or land drains being a common cause.

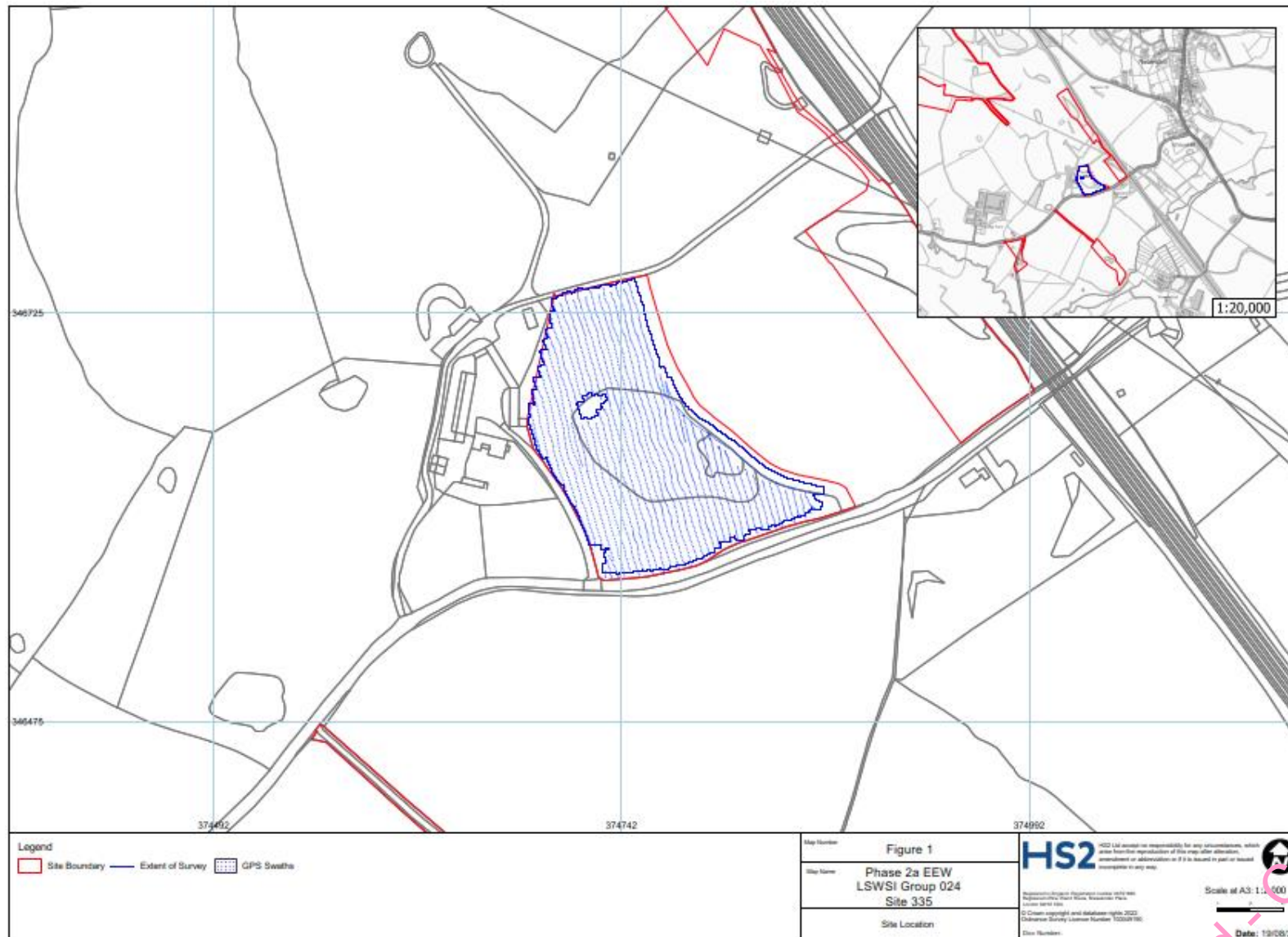
Areas of magnetic enhancement/positive isolated anomalies

Areas of enhanced response are characterised by a general increase in the magnetic background over a localised area whilst discrete anomalies are manifest by an increased response (sometimes only visible on an XY trace plot) on two or three successive traces. In neither instance is there the intense dipolar response characteristic exhibited by an area of magnetic disturbance or of an 'iron spike' anomaly (see above). These

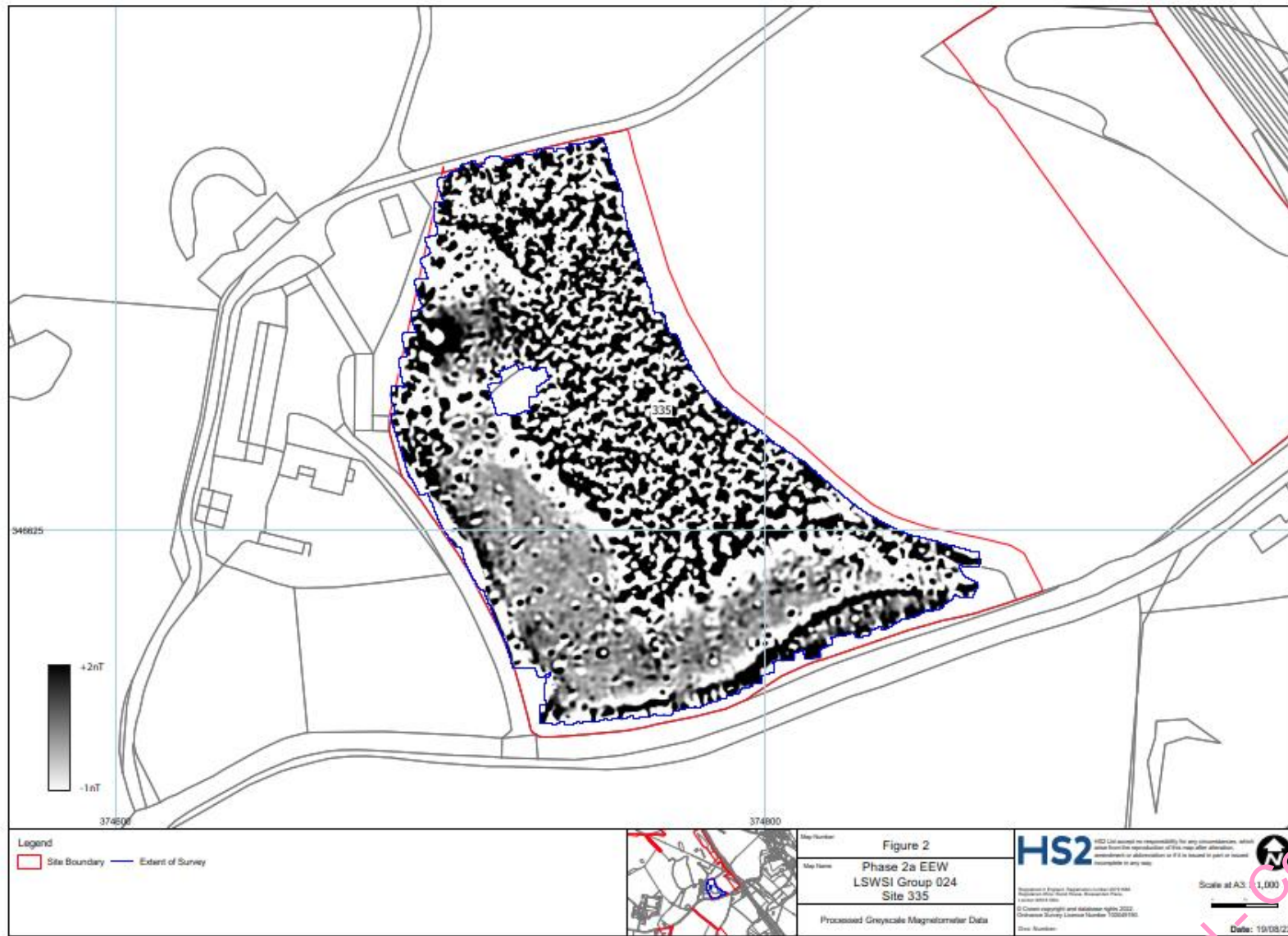
anomalies can be caused by infilled discrete archaeological features such as pits or post-holes or by kilns. They can also be caused by pedological variations or by natural infilled features on certain geologies. Ferrous material in the subsoil can also give a similar response. It can often therefore be very difficult to establish an anthropogenic origin without intrusive investigation or other supporting information.

Linear and curvilinear anomalies

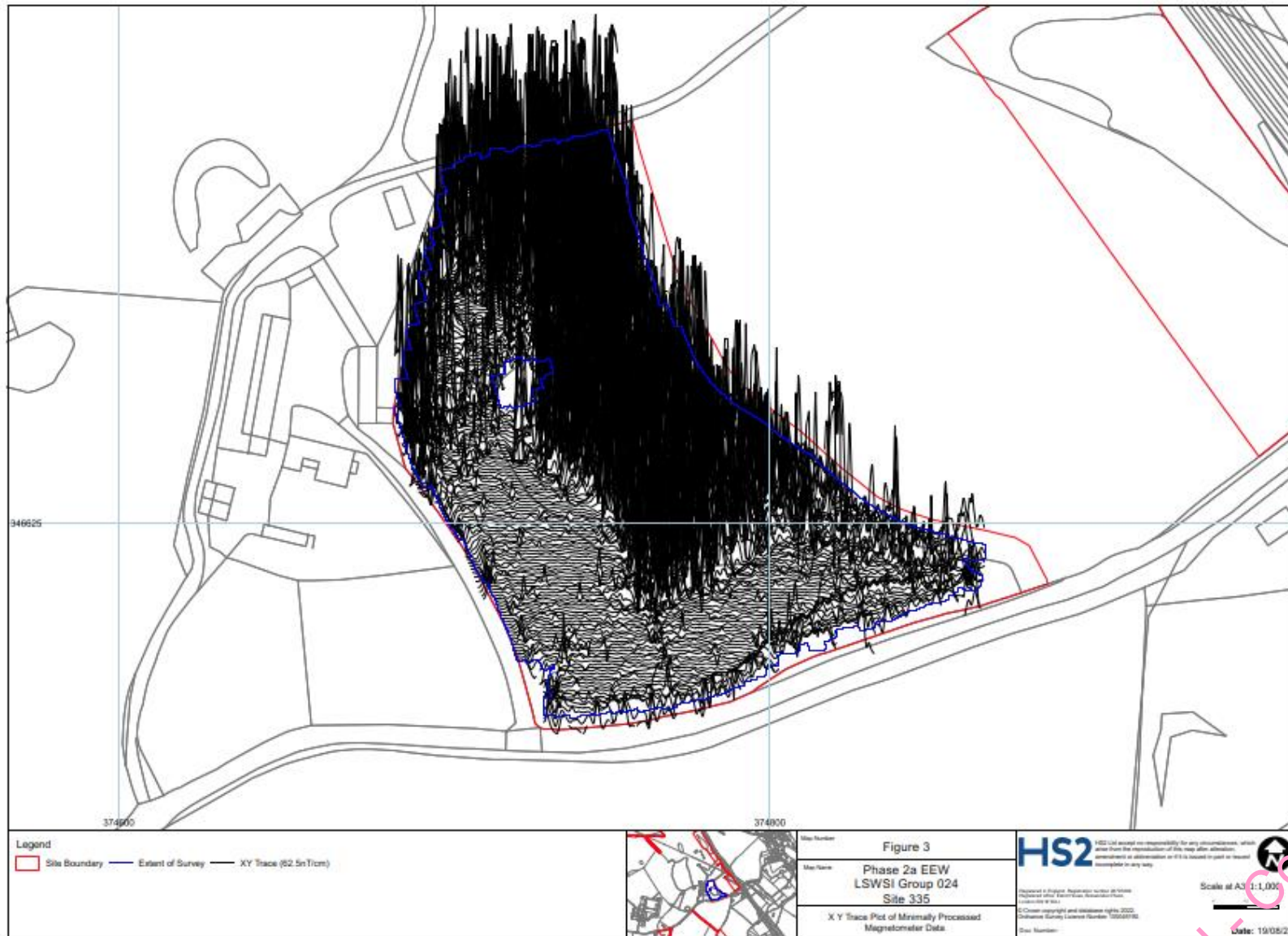
Such anomalies have a variety of origins. They may be caused by agricultural practice (recent ploughing trends, earlier ridge and furrow regimes or land drains), natural geomorphological features such as palaeochannels or by infilled archaeological ditches.



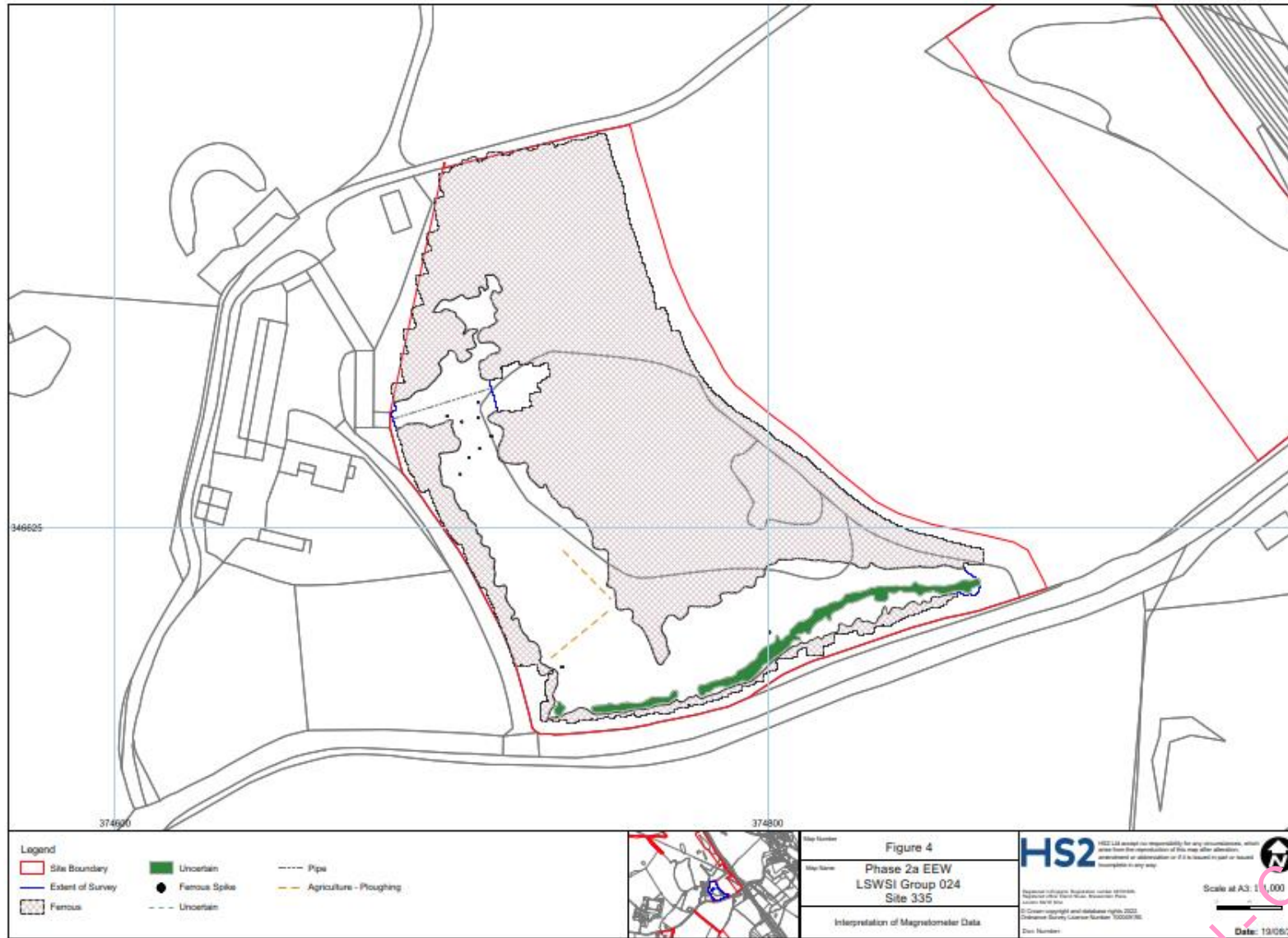
HS2 Ltd - Code 1 - Accepted



HS2 Ltd. Code 1 - Accepted



HS2 Ltd - Code 1 - Accepted



HS2 Ltd - Code 1 - Accepted

Annex 3: OASIS Form

Project Details:

Project name	Geophysical Survey at Group 024 Site 335
Type of project	Geophysical Survey, MAGNETOMETRY SURVEY
Project description	<p>The survey was undertaken using four Bartington Grad601 sensors mounted at 1m intervals (1m traverse interval) onto a rigid carrying frame. The system was programmed to take readings at a frequency of 10Hz (allowing for a 10-15cm sample interval) on roaming traverses (swaths) 4m apart. These readings were stored on an external weatherproof laptop and later downloaded for processing and interpretation. The system was linked to a Trimble R8s Real Time Kinetic (RTK) differential Global Positioning System (dGPS) outputting in NMEA mode to ensure a high positional accuracy for each data point, in accordance with EAC guidelines (EAC 2016).</p> <p>All suitable areas within the Site were surveyed and no anomalies of clear archaeological potential have been identified. The Site is largely covered by a dense spread of magnetic disturbance likely caused by magnetic debris used to try and improve drainage on the site. This interpretation is supported by evidence of brick/rubble and other debris on the ground identified by the survey team. Given the strength of magnetic response it remains plausible responses from more weakly magnetic archaeological features could be masked if present in this area. The only finding of note is a curvilinear anomaly of uncertain origin recorded at the southern boundary of the Site which is also the present field boundary. A modern service/drain remains the most likely cause of this feature however an archaeological cause cannot be ruled out based on the geophysics data alone. Elsewhere a service pipe extending from the site boundary and farm to the west, towards the pond within the Site and two faint linear trends likely</p>

HS2 Ltd - Accepted

		agricultural in origin are the only other identifiable anomalies in the survey data.			
Project dates		Start: 25-Jan-2022		End: 25-Jan-2022	
Previous work		N/A			
Future work		N/A			
Project Code:	Group 024 Site 335	HER event no.			

HS2 Ltd - Code 1 - Accepted

		NMR no.		OASIS form ID:	hs2headl1-509467
		SM no.			
Planning Application Ref.					
Site Status		None			
Land use		Arable and Pasture			
Monument type		N/A	Period	N/A	

Project Location:

Site Address	located approximately 580m south-west of the village of Wrinehill, and immediately east of Randilow Farm			Postcode	
County	Cheshire	District	Cheshire East	Parish	Checkley cum Wrinehill
Study Area	1.8ha	Height OD	Between 90 and 100m Above Ordnance Datum	NGR	SJ 74760 46645

Project Creators:

Name of Organisation	HS2 Headland Archaeology (UK) Ltd				
Project brief originator	HS2		Project design originator	HS2	
Project Manager	Alistair Webb		Project Supervisor	Matt Berry	
Sponsor or funding body	Balfour Beatty		Type of Sponsor	Client	

Project Archive and Bibliography:

Physical archive	N/A	Digital Archive	Geophysical survey and report	Paper Archive	N/A
Report title	Phase 2a Heritage Non-intrusive Surveys Report: Group 024 Site 335 Geophysics survey report			Date	31/10/2022
Author	Headland Archaeology	Description	PDF/A	Report ref.	

