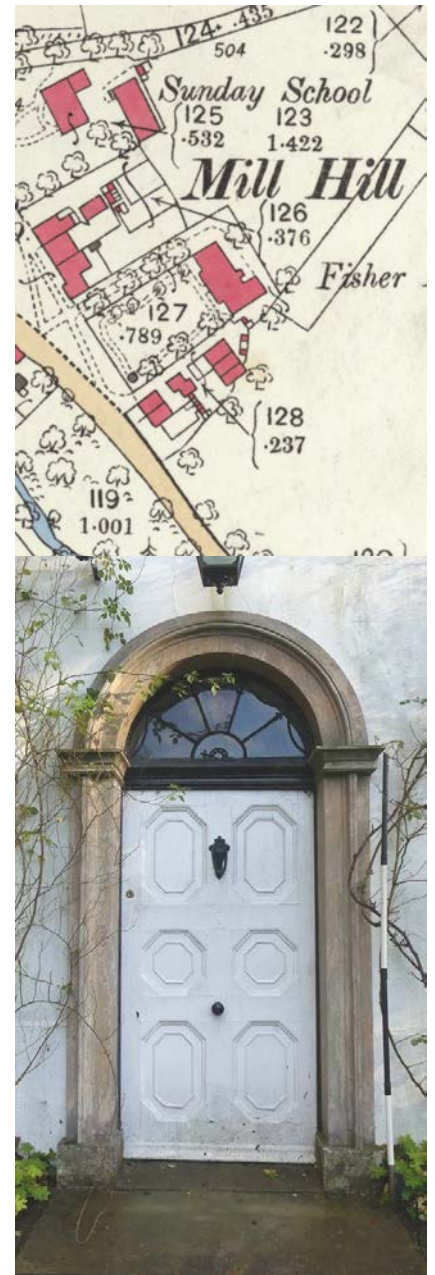


FISHER HOUSE, RIVINGTON LANE, RIVINGTON, LANCASHIRE

Archaeological Building Recording



Client: Minerva Heritage

Planning ref: 22/00602/LBC

NGR SD 62736 14459

© Greenlane Archaeology Ltd

January 2023



The Site	
Site Name	Fisher House, Rivington Lane, Rivington
County	Lancashire
NGR	SD 62736 14459
Listing Status, Level, and number	Listed Building Grade II (1072508)
Brief description of building/buildings to be recorded	House. Late 18 th century, altered

Client	
Client Name	Minerva Heritage
Client's architect	Style Design & Architecture Ltd
'As existing' drawings available?	Yes

Planning	
Pre-planning?	No
Planning Application No.	22/00602/LBC
Plans (e.g. conversion, extension, demolition)	Alterations including demolition of existing single-storey extension and general repair and refurbishment
Condition number	4
Local Planning Authority	Chorley Council
Planning Archaeologist	Lancashire County Council
Level of Building Recording required	2/3

Archiving	
Relevant Record Office(s)/Archive Centre(s)	Preston
Relevant HER	Lancashire

Staffing	
Desk-based assessment	Tom Mace
Building recording	Dan Elsworth Tom Mace
Report writing	Dan Elsworth Tom Mace
Report editing	Tom Mace
Illustrations	Tom Mace
Date on site work carried out	November 2022

Greenlane Archaeology Ltd,
Lower Brook Street, Ulverston, Cumbria, LA12 7EE

Tel: 01229 588 500
Email: info@greenlancearchaeology.co.uk
Web: www.greenlancearchaeology.co.uk

Contents

Illustrations.....	2
List of Figures.....	2
List of Plates.....	2
Non-Technical Summary.....	7
Acknowledgements.....	7
1. Introduction.....	8
1.1 Circumstances of the Project.....	8
1.2 Location, Geology, and Topography.....	8
2. Methodology.....	10
2.1 Introduction.....	10
2.2 Desk-Based Assessment.....	10
2.3 Building Recording.....	10
2.4 Archive.....	10
3. Desk-Based Assessment.....	11
3.1 Map Regression.....	11
3.2 Site History.....	13
4. Building Recording.....	15
4.1 Arrangement and Fabric.....	15
4.2 External Detail.....	15
4.3 Internal Detail.....	27
5. Discussion.....	73
5.1 Introduction.....	73
5.2 Phasing.....	73
5.3 Significance.....	74
6. Bibliography.....	75
6.1 Primary and Cartographic Sources.....	75
6.2 Secondary Sources.....	75
Appendix 1: Listed Building Details.....	77
Appendix 2: Census information 1851-1901.....	78
Appendix 3: Photograph Record Index.....	80
Appendix 4: Archive Index.....	89

Illustrations

List of Figures

Figure 1: Site location	9
Figure 2: South-west external elevation	23
Figure 3: North-west external elevation	24
Figure 4: North-east external elevation	25
Figure 5: South-east external elevation	26
Figure 6: Basement plan.....	69
Figure 7: Ground floor plan	70
Figure 8: First floor plan.....	71
Figure 9: Second floor plan.....	72
Figure 10: Basement plan, showing location and direction of photographs taken	85
Figure 11: Ground floor plan, showing location and direction of photographs taken	86
Figure 12: First floor plan, showing location and direction of photographs taken	87
Figure 13: Second floor plan, showing location and direction of photographs taken	88

List of Plates

Plate 1: Extract from Yates's map of Lancashire showing the site (after Minerva Heritage 2021, 20)	11
Plate 2 (left): Extract from the Ordnance Survey map of 1849.....	12
Plate 3 (right): Extract from the Ordnance Survey map of 1894	12
Plate 4: Fisher House Temperance Hotel, c1901.....	12
Plate 5 (left): Extract from the Ordnance Survey map of 1908.....	13
Plate 6 (right): Extract from the Ordnance Survey map of 1929	13
Plate 7 (left): General view of the front (south-west) elevation.....	15
Plate 8 (right): General view of the rear (north-east) elevation	15
Plate 9 (left): Extension at the north-west end of the south-west external elevation.....	16
Plate 10 (right): Window at the north-west end of the south-west external elevation	16
Plate 11 (left): North-west end of the south-west external elevation of the main house	16
Plate 12 (centre): Central part of the south-west external elevation of the main house.....	16
Plate 13 (right): South-east end of the south-west external elevation of the main house	16
Plate 14 (left): Window in the brick wall to the south-east end of the south-west external elevation	17
Plate 15 (right): Brick wall and gate to the south-east end of the south-west external elevation	17
Plate 16: Conservatory and extension at the south-east end of the south-west external elevation.....	17
Plate 17 (left): North-west external elevation of the south-east extension	18
Plate 18 (right): North-west external elevation of the main house and garage	18
Plate 19 (left): North-west external elevation of the garage	18
Plate 20 (right): Sliding door to the garage.....	18
Plate 21 (left): Sliding door runner marked "R Slinger & Son Preston"	19
Plate 22 (right): "Coburn No. 11" on the sliding door mechanism	19
Plate 23 (left): North-east external elevation of the south-east extension.....	20

Plate 24 (right): North-east external elevation of the main house	20
Plate 25 (left): South-east end of the north-east external elevation of the main house	20
Plate 26 (right): North-west end of the north-east external elevation of the main house	20
Plate 27: North-east external elevation of the garage	21
Plate 28 (left): South-east gable end of the main house	21
Plate 29 (right): South-east external elevation of the south-east extension and conservatory	21
Plate 30 (left): South-east external elevation of the conservatory.....	22
Plate 31 (right): South-east external elevation of the south-east extension.....	22
Plate 32 (left): Detail of the ceiling at the south-west end of the basement	27
Plate 33 (right): Detail of the joists in the basement ceiling.....	27
Plate 34 (left): I-beam supports in the basement	28
Plate 35 (right): General view of the basement	28
Plate 36 (left): Stairs at the north-east end of the basement.....	28
Plate 37 (right): Alcove in the north-east elevation of the basement.....	28
Plate 38 (left): Archway at the north-east end of the basement	29
Plate 39 (right): Alcove at the north-east end of the south-east elevation of the basement.....	29
Plate 40 (left): General view of the centre section of the south-east elevation of the basement	29
Plate 41 (right): Window at the south-west end of the north-west elevation of the basement	29
Plate 42 (left): General view of the centre section of the north-west elevation of the basement	30
Plate 43 (right): Alcove at the north-east end of the north-west elevation of the basement	30
Plate 44 (left): Hanging timber drying rack in Room G1	30
Plate 45 (right): North-east elevation of Room G1	30
Plate 46 (left): Door to the north-west end of the north-east elevation of Room G1	31
Plate 47 (right): Door to the south-east end of the north-east elevation of Room G1	31
Plate 48 (left): Sink in the north-west room to the north-west side of Room G1	32
Plate 49 (right): Toilet in the south-east room to the north-west side of Room G1	32
Plate 50 (left): Shelves in the south-east room to the north-west side of Room G1	32
Plate 51 (right): Window in the south-east room to the north-west side of Room G1	32
Plate 52 (left): The south-east elevation of Room G1	33
Plate 53 (right): Winder for the drying rack.....	33
Plate 54 (left): Fireplace in Room G1	33
Plate 55 (right): Door at the north-west end of the south-west elevation of Room G1.....	33
Plate 56: North-west elevation of Room G1	34
Plate 57 (left): General view of the south-east end of Room G2.....	34
Plate 58 (right): General view of the north-west end of Room G2.....	34
Plate 59 (left): Door in the north-east elevation of Room G2	35
Plate 60 (right): Door in the north-west elevation of Room G2.....	35
Plate 61 (left): Meat hooks in Room G3	36
Plate 62 (right): Beams in Room G3.....	36
Plate 63: South-east elevation of Room G3	36

Plate 64 (left): Inside of the door in the north-west elevation of Room G3.....	37
Plate 65 (right): Outside of the door in the north-west elevation of Room G3.....	37
Plate 66 (left): Door in the south-east elevation of Room G3.....	37
Plate 67 (right): South-east elevation of Room G3.....	37
Plate 68 (left): South-west elevation of Room G3	38
Plate 69 (right): Door in the north-west elevation of Room G3.....	38
Plate 70 (left): North-east elevation of Room G4.....	38
Plate 71 (right): South-east elevation of Room G4.....	38
Plate 72 (left): Fireplace in Room G4	39
Plate 73 (right): Detail of the decorated alcoves in Room G4	39
Plate 74 (left): Window in the south-west elevation of Room G4	39
Plate 75 (right): Door in the north-west elevation of Room G4.....	39
Plate 76 (left): Stairs at the north-east end of Room G5	40
Plate 77 (centre): Front detail of decorative arch in Room G5	40
Plate 78 (right): Below detail of decorative arch in Room G5.....	40
Plate 79 (left): Detail of the stairs in Room G5	41
Plate 80 (right): Door to space below the stairs in Room G5	41
Plate 81 (left): Doors in the south-east elevation of Room G5	41
Plate 82 (right): Doors to the cellar and Room G7 at the north-east end of Room G5	41
Plate 83: Door at the south-west end of Room G5.....	42
Plate 84 (left): Cornicing in Room G6.....	43
Plate 85 (right): Ceiling rose in Room G6.....	43
Plate 86 (left): North-east and south-east elevations of Room G6.....	43
Plate 87 (right): Door at the north-east end of the south-east elevation of Room G6.....	43
Plate 88 (left): South-west and north-west elevations of Room G6.....	44
Plate 89 (right): Window in the south-west elevation of Room G6.....	44
Plate 90 (left): Detail of window in Room G6.....	44
Plate 91 (right): Fireplace in Room G6	44
Plate 92 (left): North-east elevation of Room G7.....	45
Plate 93 (right): Door at the south-east end of the south-west elevation of Room G7.....	45
Plate 94 (left): Boxed section over the stairs in Room G7.....	46
Plate 95 (right): Shelving in Room G7	46
Plate 96 (left): Alcove in the north-west elevation of Room G7	46
Plate 97 (right): Coat hooks in the alcove in Room G7	46
Plate 98 (left): North-east elevation of Room G8.....	47
Plate 99 (right): Window in the north-east elevation of Room G8	47
Plate 100 (left): Column to the side of the window in Room G8.....	47
Plate 101 (right): Door at the south-east end of the north-east elevation of Room G8	47
Plate 102 (left): Stairs along the south-east wall of Room G8.....	48
Plate 103 (right): Stud wall around the stairs in Room G8	48

Plate 104 (left): Blocked doorway in the south-east elevation of Room G8	48
Plate 105 (right): General view of the south-west elevation of Room G8	48
Plate 106 (left): North-west elevation of Room G8	49
Plate 107 (right): Iron column in the doorway on the north-west elevation of Room G8.....	49
Plate 108 (left): Ceiling in Room G9	49
Plate 109 (right): North-west end of the north-east elevation of Room G9	49
Plate 110 (left): South-east end of the north-east elevation of Room G9	50
Plate 111 (right): South-east elevation of Room G9.....	50
Plate 112 (left): General view of the south-west elevation of Room G9.....	50
Plate 113 (right): North-west elevation of Room G9.....	50
Plate 114 (left): North-east elevation of Room F1	51
Plate 115 (right): South-east elevation of Room F1	51
Plate 116 (left): South-west elevation of Room F1	51
Plate 117 (right): Fireplace in Room F1.....	51
Plate 118: Doorway in the west corner of Room F1	52
Plate 119 (left): North-east elevation of Room F2	52
Plate 120 (right): South-east elevation of Room F2	52
Plate 121 (left): Cupboard in the side of the fireplace in Room F2.....	53
Plate 122 (right): General view of the south-west and north-west elevations of Room F2	53
Plate 123 (left): Cupboards in the south-east elevation of Room F3 with the doors closed	53
Plate 124 (right): Cupboards in the south-east elevation of Room F3 with the doors open.....	53
Plate 125 (left): Window in the south-west elevation of Room F3.....	54
Plate 126 (right): Door in the north-west elevation of Room F3	54
Plate 127 (left): Archway at the north-east end of Room F4	55
Plate 128 (right): Stairs at the north-east end of Room F4.....	55
Plate 129 (left): Scar in the north-west elevation of Room F4.....	56
Plate 130 (right): Window at the south-west end of Room F4.....	56
Plate 131 (left): North-east and south-east elevations of Room F5	57
Plate 132 (right): Door in the south-east elevation of Room F5	57
Plate 133 (left): South-west and north-west elevations of Room F5	57
Plate 134 (right): Window in the south-west elevation of Room F5.....	57
Plate 135 (left): Fireplace in Room F5.....	58
Plate 136 (centre): Cupboard to the side of the fireplace in Room F5 with the doors closed	58
Plate 137 (right): Cupboard to the side of the fireplace in Room F5 with the doors open.....	58
Plate 138: Window in the north-east elevation of Room F6	58
Plate 139 (left): South-east elevation of Room F6.....	59
Plate 140 (right): North-west elevation of Room F6	59
Plate 141 (left): General view of the north-east and north-west elevations of Room F7	59
Plate 142 (right): General view of the south-west elevation of Room G7	59
Plate 143 (left): General view of the south-east elevation of Room F7	60

Plate 144 (right): General view of the top of the stairs in Room G7	60
Plate 145: Blocked door in the south-east elevation of Room F7	60
Plate 146 (left): Window in the north-east elevation of Room S1	61
Plate 147 (right): South-east elevation of Room S1	61
Plate 148: North-west elevation of Room S1	61
Plate 149 (left): South-east elevation of Room S2	62
Plate 150 (right): Fireplace in Room S2	62
Plate 151 (left): Window in the south-west elevation of Room S2.....	62
Plate 152 (right): Door in the north-west elevation of Room S2.....	62
Plate 153 (left): North-east end of Room S3	63
Plate 154 (right): Stairs at the north-east end of Room S3	63
Plate 155: South-west end of Room S3	64
Plate 156 (left): South-east elevation of Room S4	65
Plate 157 (right): South-west and north-west elevations of Room S4.....	65
Plate 158 (left): Window in the south-west elevation of Room S4.....	65
Plate 159 (right): North-west elevation of Room S4	65
Plate 160 (left): North-east elevation of Room S5.....	66
Plate 161 (right): Door in the south-west elevation of Room S5	66
Plate 162: Airing cupboard in Room S5	66
Plate 163 (left): Internal roof structure	67
Plate 164 (right): Dividing brick wall in the attic	67

Non-Technical Summary

Following the submission of a planning application and Listed Building consent application for alterations to Fisher House, Rivington, a condition was placed on both of the decision notices requiring an archaeological building recording be carried out. Greenlane Archaeology carried out the work in November 2022, following on from an earlier desk-based assessment completed by Minerva Heritage in 2021.

Fisher House is thought to have been constructed in the late 18th century following the arrival of the Rev John Fisher to Rivington in 1763, although direct documentary evidence for this is scarce. It is apparently shown on Yates's map of 1786 although not on the same alignment and it is depicted in an unusual way for a house, more like how industrial buildings and mills are shown than the way in which houses are otherwise indicated. The Fisher family held on to it for most of the 19th century, but it was rented out from at least 1837. Details about the house, other than the later 19th and early 20th century Ordnance Survey maps, are relatively scarce, but a description of the rooms from a rental advert of 1837 does give some indication of its layout.

The building recording revealed that while the core of the house, a double-pile building with flanking wings, making an impressive front elevation, could indeed be of late 18th century date and contained a number of features of that date or earlier. Much of the decorative scheme and major elements such as the staircase are actually early 19th century in style. Several other stages of modification were also revealed, dating from the late 19th and into the 20th century, some of which could be linked to map evidence and were related to attached extensions to the main house. The main house retained much of its original form until the 20th century.

As a Listed Building the house remains a significant local structure, with its core still intact and retaining many features of historic interest. It is unfortunate that its originally symmetrical front elevation was reduced to a façade on the south-east side, but the changes that have occurred elsewhere in the building reflect the manner in which it was adapted to suit different periods, especially the more functional elements of the house.

Acknowledgements

Greenlane Archaeology would like to thank Minerva Heritage for commissioning the project.

1. Introduction

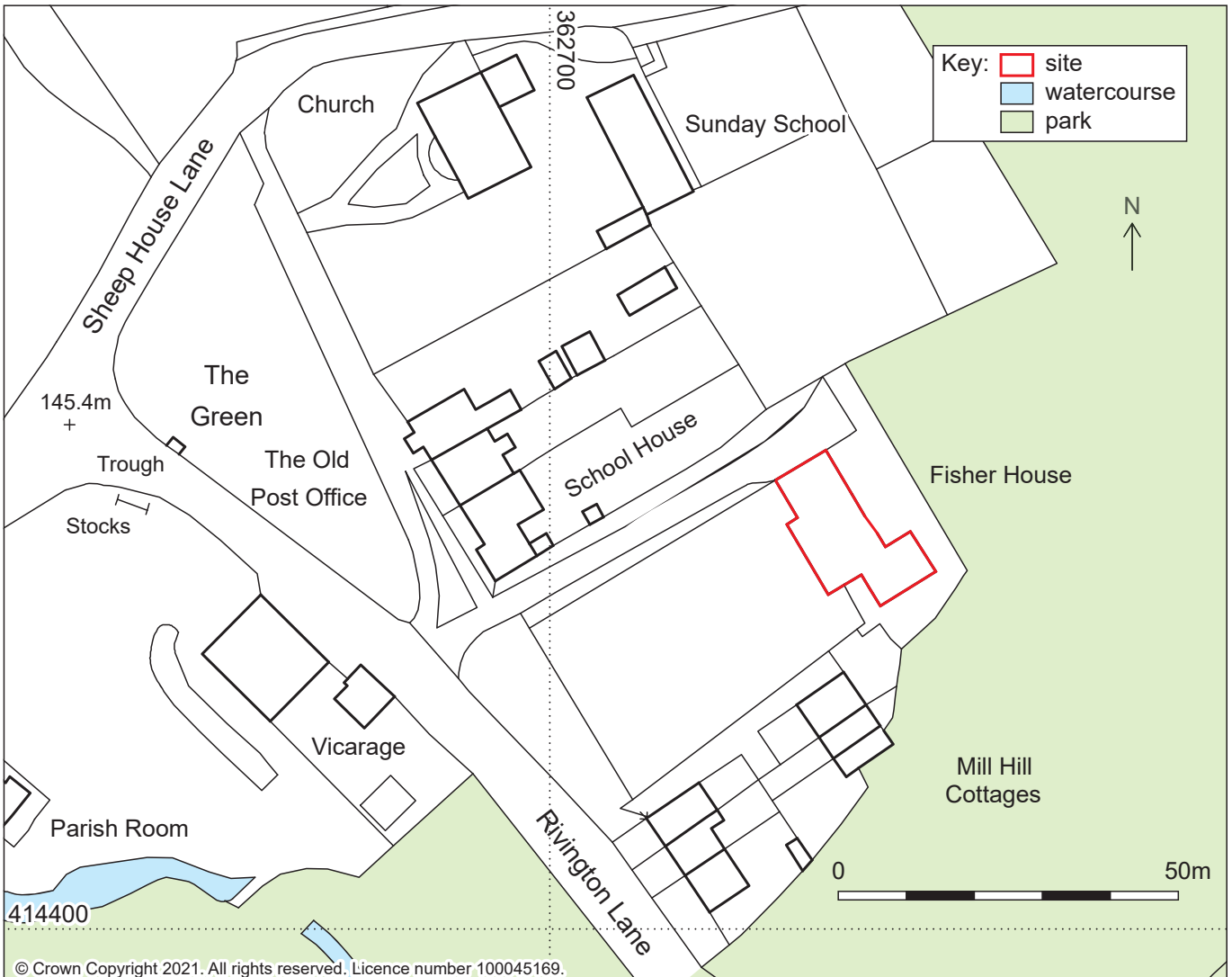
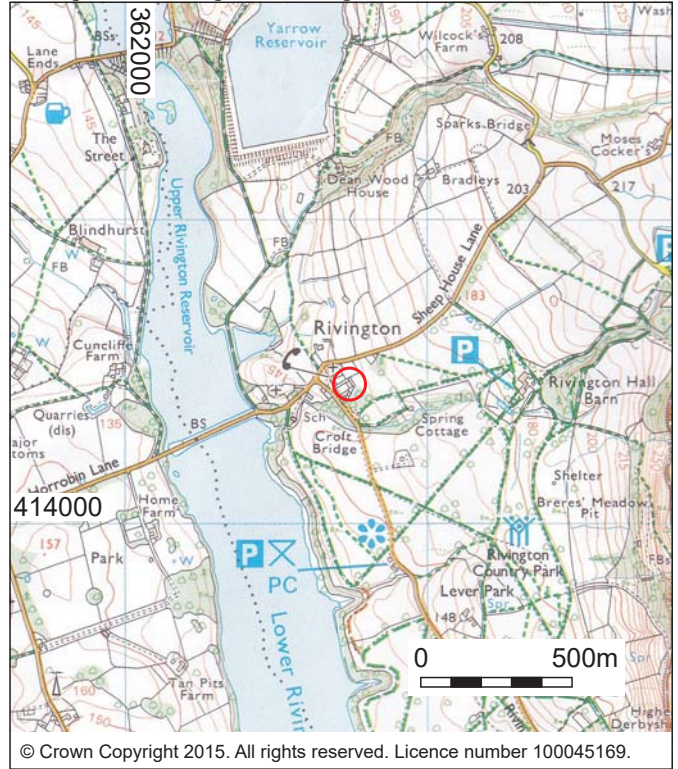
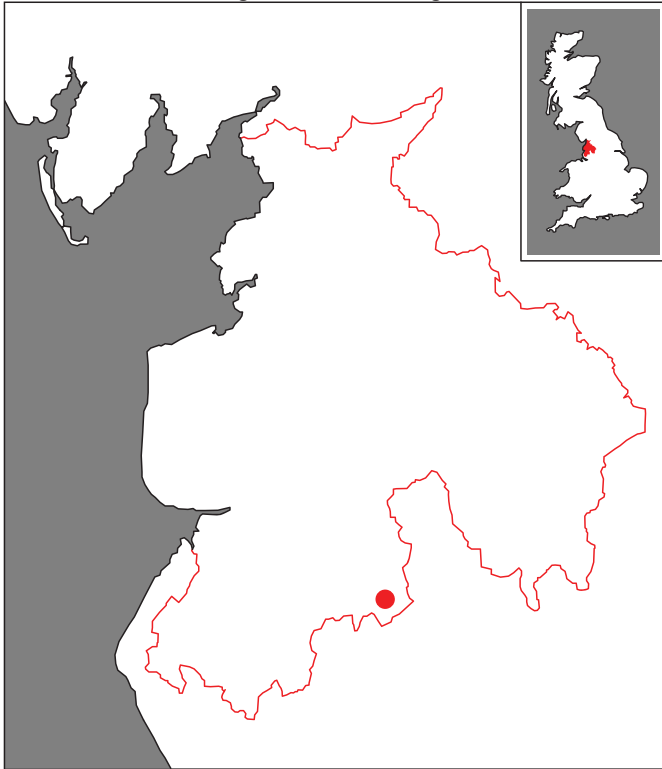
1.1 Circumstances of the Project

1.1.1 The circumstances of the project are set out in the tables on the inside cover of this report.

1.2 Location, Geology, and Topography

1.2.1 Rivington is between Chorley and Bolton. Chorley is c4km to the north-west and Bolton is c7km to the south-east. Fisher House is close to The Green in Rivington, to the north-east side of Rivington Lane, and is approximately 140m above sea level (Figure 1; Ordnance Survey 2015). It is c300m east of the reservoirs at Rivington and backs onto Lever Park (Historic England 2022b; see Figure 1).

1.2.2 The local landscape is typically heavily urbanised, especially the lower lying areas, but the site is located on the rural fringe of this on higher ground where the land is general divided into pasture and rough grassland divided by hedges or walls with smaller areas of woodland (Countryside Commission 2002, 103). The local solid geology is made up of coal measures overlain on higher ground by Millstone Grit, covered by glacial drift in the valley bottoms (*op cit*, 102).



Client: Minerva Heritage

© Greenlane Archaeology Ltd, January 2023

Figure 1: Site location

2. Methodology

2.1 Introduction

2.1.1 The archaeological building recording is intended to provide a suitable record of the structure equivalent to Level 2/3 survey as defined by Historic England (Historic England 2016). The building recording was carried out according to the guidelines of the Chartered Institute for Archaeologists (CIfA 2014a; 2014b). A suitable archive has also been compiled to provide a permanent paper record of the project and its results, also in accordance with CIfA guidelines (CIfA 2014c).

2.2 Desk-Based Assessment

2.2.1 A desk-based assessment was carried out in accordance with the guidelines of the Chartered Institute for Archaeologists (CIfA 2014b). This principally comprised an examination of early maps of the site and published secondary sources. A number of sources of information were used during the compilation of the desk-based assessment:

- **Record Office/Archive Centre:** the majority of original and secondary sources relating to the site are deposited in the relevant Record Office(s) or Archive Centre(s), as specified in the cover sheet of this report. Of principal importance are early maps of the site. These were examined in order to establish the development of the site, date of any structures present within it, and details of land use, in order to set the site in its historical, archaeological, and regional context. In addition, any details of the site's owners and occupiers were acquired where available;
- **Online Resources:** where available, mapping such as Ordnance Survey maps and tithe maps were consulted online;
- **Greenlane Archaeology:** Greenlane Archaeology's office library includes maps, local histories, and unpublished primary and secondary sources. These were consulted where relevant, in order to provide information about the history and archaeology of the site and the general area.

2.3 Building Recording

2.3.1 The building recording was carried out to Historic England Level 2/3 type standards (Historic England 2016), which provides a relatively detailed record of the building. The recording comprised the following elements:

- **Written record:** descriptive records of all parts of the building were made using Greenlane Archaeology *pro forma* record sheets;
- **Photographs:** photographs in colour digital format (as both 12meg jpegs and RAW files) were taken of the main features of the building, its general surroundings, and any features of architectural or archaeological interest (see *Appendix 3*). A selection of the colour digital photographs is included in this report, and the remaining photographs are in the project archive;
- **Drawings:** 'as existing' architect's drawings were provided by the client's architect. These were plotted at a scale of 1:100 and annotated by hand with additional detail.

2.4 Archive

2.4.1 The archive, comprising the drawn, written, and photographic record of the building, will be deposited with the relevant Record Office or Archive Centre, as detailed on the cover sheet of this report, together with a copy of the report. The archive has been compiled according to the standards and guidelines of the CIfA guidelines (CIfA 2014c; see *Appendix 4*). In addition, details will be submitted to the Online Access to the Index of archaeological investigationS (OASIS) scheme. This is an internet-based project intended to improve the flow of information between contractors, local authority heritage managers and the general public. A copy of the report will be provided to the client and a digital copy of the report will be provided for the relevant Historic Environment Record, as detailed on the cover sheet of this report.

3. Desk-Based Assessment

3.1 Map Regression

3.1.1 **Introduction:** early county-wide maps of the area of 17th and 18th century date tend not to be detailed enough to usefully show the site. It has been stated that it is depicted on Yates's plan of Lancashire dated 1786 (Minerva Heritage 2021, 20), but on further examination of this it is not clear if this is the case. The earliest useful plans therefore only date from the mid-19th century onwards. It is not shown on the 1850 tithe map for Rivington, so presumably was not tithable (NA IR 30/18/269, 1850).

3.1.2 **Yates, 1786:** this is one the earliest widely available and relatively detailed plans of the area, although the scale means that identifying individual buildings is difficult. It does appear to show a building on the site of Fisher Hall, although on a different alignment and depicted in an unusual way, closer to the manner in which industrial buildings and mills are shown (an open shape with a dot in the centre) rather than the manner in which houses are otherwise depicted.



Plate 1: Extract from Yates's map of Lancashire showing the site (after Minerva Heritage 2021, 20)

3.1.3 **Ordnance Survey, 1849:** Fisher House is marked on the first Ordnance Survey map of the area, surveyed between 1845 and 1847 (Plate 2). The main north-west/south-east aligned section of the house is apparent, with the stepped out section on the south-west elevation. The rear (north-east) elevation is also stepped out, however, at a scale of 1:10,560, it is difficult to determine how accurately this is depicted (Plate 2).

3.1.4 **Ordnance Survey, 1894:** this, the first edition 1:2,500 map, is more detailed than the previous edition of the Ordnance Survey maps (Plate 3; cf. Plate 2). The jutting sections to the front and rear of the property appear altered, although the extent to which this is due to the differences in scale at which the two maps were produced is unclear (Plate 3; cf. Plate 2). The block jutting out to the north-east at the south-east end of the rear (north-east) elevation has apparently been added by this time. The footprint of the building on the 1894 edition, surveyed in 1892, is much as it is today; however, there is a small jutting section approximately midway along the north-east elevation (possibly a porch), which is no longer present. The south-east end of the block, which has now mostly been demolished, was also still extant.

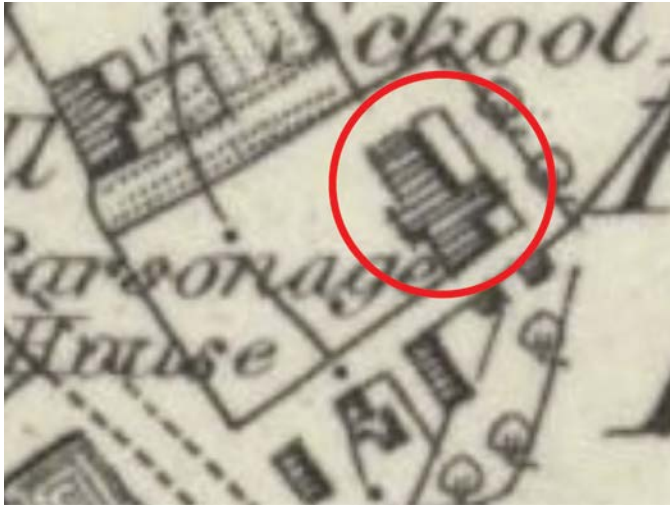


Plate 2 (left): Extract from the Ordnance Survey map of 1849



Plate 3 (right): Extract from the Ordnance Survey map of 1894

3.1.5 **Photograph, c1901:** a photograph of the front elevation of the building exists (Lancashire County Council nd). This is clearly from the period during which the building was used as a temperance hotel as it has a painted sign across the front reading 'Fisher House Temperance Hotel' (Plate 4), which dates it to approximately 1901 and no later than about 1904 (see Section 3.2.4).



Plate 4: Fisher House Temperance Hotel, c1901

3.1.6 **Ordnance Survey, 1908:** the site is unchanged (Plate 5; cf. Plate 2).

3.1.7 **Ordnance Survey, 1929:** an extension has apparently been added to the north-east side at the north-west end (shown as subdivided from the main block), and part of the south-east end appears to have been demolished leaving unroofed walls at the corner of the house (Plate 6).

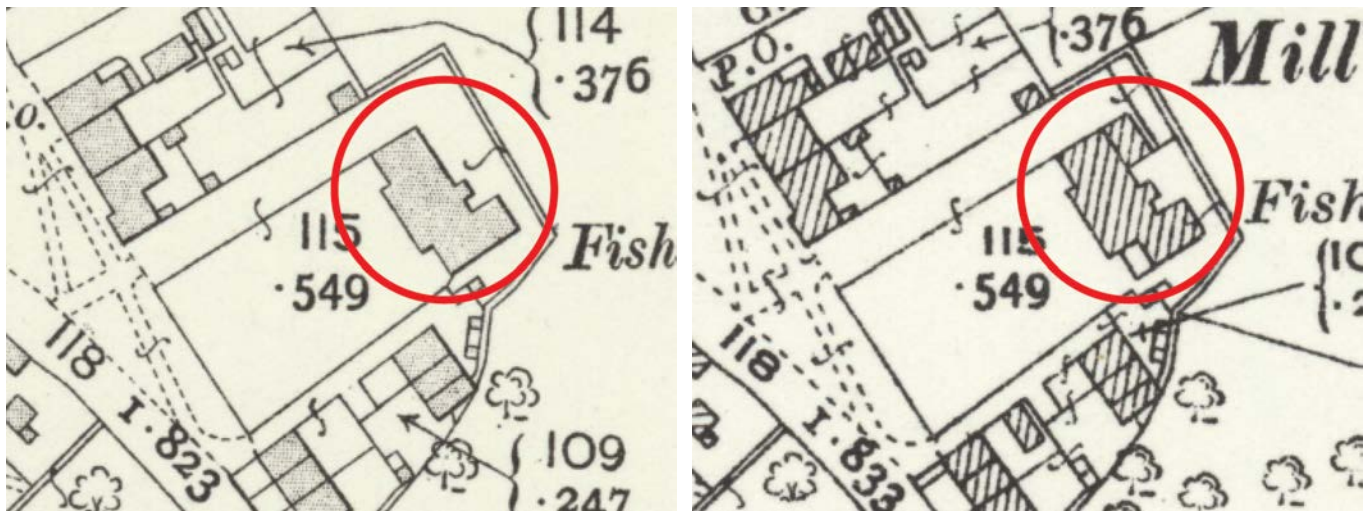


Plate 5 (left): Extract from the Ordnance Survey map of 1908

Plate 6 (right): Extract from the Ordnance Survey map of 1929

3.2 Site History

3.2.1 **Origins:** the site history is derived from a variety of sources, primarily the earlier Heritage Statement (Minerva Heritage 2021; sources from this have been re-examined and expanded upon where useful), an unpublished booklet about the house present on site (Anon nd), and also the Listing entry for the property. All of these sources agree that the house has its origins in the late 18th century, although it was subsequently altered (Historic England 2022a; see *Appendix 1*). It is thought to have been built by Rev John Fisher, incumbent of Church of Holy Trinity 1763-1813, and principally comprises a double-pile plan house originally, which was extended to the north-west and north-east, with a brick 'service wing' set back at each end (Historic England 2022a).

3.2.2 **Owners:** the site is not on the 1850 tithe map for Rivington (NA IR 30/18/269 1850; see *Section 3.1.3* above) and details of the owners are difficult to ascertain without consulting the deeds. As already mentioned, the house is said to have been built shortly after the arrival in Rivington of the Rev John Fisher in 1763, who remained vicar of Rivington until his death in 1813, and built on land acquired for a yearly rental from Robert Andrews of Rivington Hall (Anon nd). It apparently remained in the ownership of the Fisher family descendants until 1889, although they advertised it 'to let' in 1837 (*ibid*). It was sold in 1889 by the last descendant of the Fishers, a Captain Wentworth Daws of Kidderminster, to Luke Gent of Adlington for £355, but he only held it for a year before selling it to Ann Gerrard in 1890 for £360 (*ibid*). It sold again in 1901 to a Joseph Pearson for £575 before being acquired by the Liverpool Corporation in 1904 for £2419, after they had acquired the Rivington estate in 1902 (*ibid*).

3.2.3 **Occupiers:** details of the occupiers are difficult to be certain of. One of the earliest reliable sources for this is usually the tithe apportionment, however, the site was presumably not tithable as it is not on the 1850 tithe map for Rivington (NA IR 30/18/269 1850) and is therefore not in the accompanying apportionment (NA IR 29/18/269 1845). Rivington was historically part of Bolton le Moors parish; however, it was not possible to find Fisher House in the 1841 census. Details of the census returns between 1851 and 1911 are summarised in the earlier heritage statement (Minerva Heritage 2021) and are presented in full in *Appendix 3*. Nevertheless, it was clearly being rented from at least 1837 and was apparently occupied by Henry Oakes until 1859 (Anon nd), although this does not tally with the 1851 census. The following tenant was apparently Rev John Samuel Gilbert, minister of Rivington Chapel from 1855-1880 (*ibid*), who does appear in the census but only for 1861. A Mr and Mrs Crompton then followed and lived there until about 1881, which again tallies with the 1871 and 1881 census returns. It is apparent that in 1891 it was occupied by Ann Gerard. It was uninhabited in 1901 but shortly after that was used as a temperance hotel until 1904 (Anon nd), and then occupied by a Mrs Patrick 1911, the wife of a Dr Patrick (*ibid*). In 1931 Phoebe Rayner and her husband Aubrey Hesketh

took up residence, and he lived there until 1976, after which it was occupied by Dr Irvine Delamore and his wife Rosemary, prior to the current owners (Minerva Heritage 2021, 18).

3.2.4 **The building:** with the exception of the map evidence, historic evidence relating to the development of the building is relatively scarce. It was said to have been built on a plot of land '*which was once part of the goose hey field*' and in a list of properties in the village from 1817 it was named 'Goose Hey House'. The letting advertisement of 1837 describes it as comprising '*Dining, Drawing and breakfast rooms, very commodious kitchen, butler's pantry, stone [sic, presumably 'store'] room scullery, seven bedrooms and other suitable offices, laundry coach house, three stalled stable and shippon and moderately sized garden well arranged with fruit trees and other trees*' (Anon nd). It is also stated that the exterior was originally exposed brick and not rendered until the 1850s, although elsewhere it is stated that this was part of a programme of renovation undertaken after 1859 (*ibid*). It was used as a boys' school for a short time in the late 19th century, and between 1901 and about 1904 it was a temperance hotel (*ibid*). This is proved by a photograph of the exterior with the sign saying 'Fisher House Temperance Hotel' (Plate 4).

4. Building Recording

4.1 Arrangement and Fabric

4.1.1 **Arrangement:** the main house is a three-storey double-pile plan with extensions to the north-west and south-east sides. The main house comprises the basement and second floor and Rooms G3 to G7 on the ground floor and F2 to F6 on the first floor. The extension to the south-east comprises Room G1 on the ground floor, with the conservatory (Room G2) attached to the south-west side, and Room F1 above. The extension to the north-west comprises Rooms G8 and G9 on the ground floor and F7 on the first floor.

4.1.2 **Fabric:** externally, the house is finished with smooth render, scored as ashlar blocks, and smoothly dressed, pale yellow sandstone is used for details (Plate 7 and Plate 8). The south-east extension comprises exposed stone of local buff gritstone and employs some small handmade brick. There is a modern conservatory to the south-west side. The south-west face of the north-west extension is also brick, matching the façade to south-east. The roof is thick stone flags to the front (south-west) and grey slate to the rear, with ceramic bonnet ridge tiles. There are two chimney stacks on the main house, with two modern pots, and a chimney on the north-east extension one with a cowl.



Plate 7 (left): General view of the front (south-west) elevation

Plate 8 (right): General view of the rear (north-east) elevation

4.2 External Detail

4.2.1 **South-west external elevation:** this elevation is the front façade of the house. The north-west end is lower than the main house and comprises the brick wall with a stone plinth projecting below the extension (Plate 9). The stone is dressed but rougher below on the north-west side; the bricks are typically 0.23-0.24m long by 0.11m wide and 0.07m thick and laid in Flemish bond. There is a six-over-six-light sash window in this section, with a dressed stone sill and splayed lintel (Plate 10). There is a slight return to the south-east of this to the main elevation.

4.2.2 The main elevation of the house is broadly symmetrical (Plate 11 to Plate 13) with a central doorway with a moulded dressed stone surround. The door is six octagonal panels, fielded, and with a glazed fan light over with relief decoration and astragals and swags and fleur-de-lys details. There are windows both sides on the ground floor, both six-over-six sash casements with dressed sills and splayed lintels but the one to the north-west is slightly larger and cutting through the projecting stone plinth at the base. There are three windows to first floor, all six-over-six sash windows with the same sill and lintel, and three on the second floor. Those on the second floor are three-over-three sash windows with the same sills and lintels. There is a projecting timber gutter at the top, supported on four angular brackets. There are L-shaped brackets either side of the ground floor windows.



Plate 9 (left): Extension at the north-west end of the south-west external elevation
Plate 10 (right): Window at the north-west end of the south-west external elevation



Plate 11 (left): North-west end of the south-west external elevation of the main house
Plate 12 (centre): Central part of the south-west external elevation of the main house
Plate 13 (right): South-east end of the south-west external elevation of the main house

4.2.3 There is a slight return at the south-east side which is continued by a brick wall matching that to the north-west but capped with stone flags (Plate 14 and Plate 15). There is a hole for a window in the centre with a dressed sill with paint/plaster scar of a casement, but no lintel. The bricks are the same

size and type as those to the north-west and the plinth projecting at the base is butted by a stone garden wall with a gate on south-east side.



Plate 14 (left): Window in the brick wall to the south-east end of the south-west external elevation

Plate 15 (right): Brick wall and gate to the south-east end of the south-west external elevation

4.2.4 Behind this section of wall is the south-west elevation proper. The lower part is covered by a mono-pitch timber conservatory on 20th century brick base (Plate 16). The elevation is smooth rendered above and then brick gable. The bricks used are similar to those in the wall to the south-west but in English Garden Bond in a 5:1 ratio. The brick wall forming the boundary to the south-east also uses the same type of bricks.



Plate 16: Conservatory and extension at the south-east end of the south-west external elevation

4.2.5 **North-west external elevation:** the north-east end of the north-west external elevation comprises the return wall of the south-east extension (Plate 17). There is a single window on ground floor level. The window has a dressed stone lintel and sill and quoins and a change in the stonework is

apparent above in the exposed stone. The stone is in rough courses. The north-west side of the main house is largely obscured by the lower gable of the extension (Plate 18), which has a massive garage door with sliding tongue and groove plank door in two parts (Plate 19). The north-east end has four lights in the top and south-west end has six (Plate 20). There is a projecting canopy over the runner marked "R Slinger & Son Preston" and "Coburn No. 11" on the mechanism (Plate 21 and Plate 22). There is a dressed stone plinth at the south-west end.



Plate 17 (left): North-west external elevation of the south-east extension

Plate 18 (right): North-west external elevation of the main house and garage



Plate 19 (left): North-west external elevation of the garage

Plate 20 (right): Sliding door to the garage

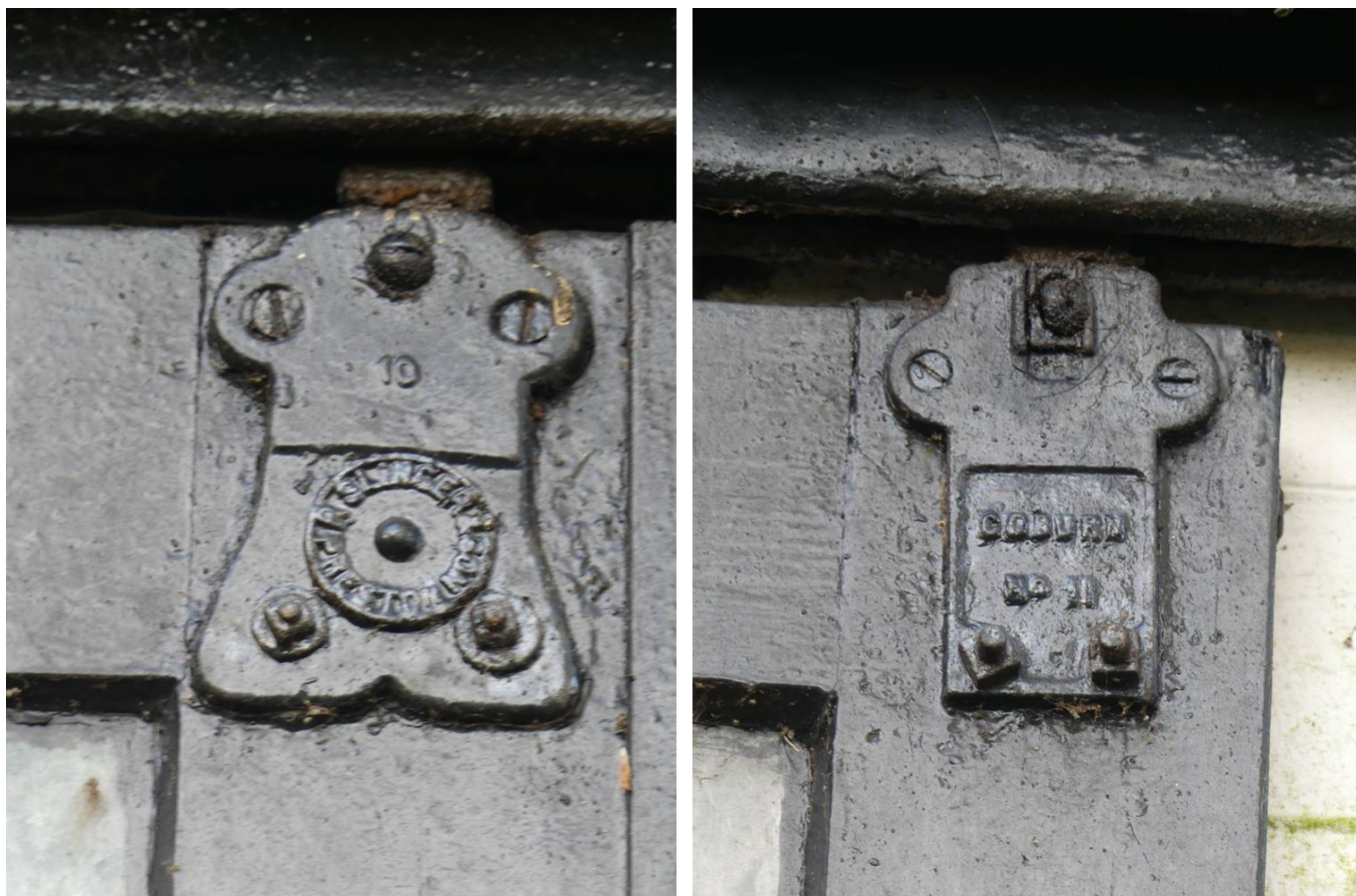


Plate 21 (left): Sliding door runner marked "R Slinger & Son Preston"

Plate 22 (right): "Coburn No. 11" on the sliding door mechanism

4.2.6 **North-east external elevation:** the south-east end of the north-east external elevation comprises the gable end of the south-east extension (Plate 23). There are two small openings at ground floor level, one of one light and one of two lights with square stone mullion between and dressed surround. There are quoins to both ends and the lower part is chamfered on the south-east side and the quoins are rounded below. There is a further small aperture below the apex with a modern overlapping plank door and stone sill and lintel. A change in the stone work is evident above the level of the windows and in the return to the south-west on the north-west elevation. The main part of the house has an irregular arrangement of doors and windows on the ground floor (Plate 24 to Plate 26). The large window to the south-east is 4x3-lights with a hinged opening in the centre. To the north-west is a doorway with a modern six-light glazed door with projecting surround and timber drip mould. The scar of a gable porch roof is apparent above and there is a vertical line in the render to the north-west. North-west of that is another smaller, 2x4-light Yorkshire sash window. In the centre is a 21-light stair window with a 2x8-light sash window to the south-east and a 2x6-light sash window to the north-west. At second floor level there is a 3x6-light Yorkshire sash to the south-east and 2x4-light Yorkshire sash to the north-west. The north-west extension is lower relative to the main part of the house (Plate 27). There is a doorway at the junction with the main house, with a timber lintel and plank door, and a fixed six-light window to the north-west. There is a cross-shaped tie rod in the centre.



Plate 23 (left): North-east external elevation of the south-east extension

Plate 24 (right): North-east external elevation of the main house



Plate 25 (left): South-east end of the north-east external elevation of the main house

Plate 26 (right): North-west end of the north-east external elevation of the main house



Plate 27: North-east external elevation of the garage

4.2.7 **South-east external elevation:** the south-west side of the south-east elevation comprises the gable of the main house and is finished with smooth plain render (Plate 28). It is topped with a chimney stack. There is a ground floor window in the centre with a modern single-light casement, which originally extended below for a taller window or possibly a door. The first-floor window to the north-east is a 12-light hinged timber casement. To the north-east side is the side of the timber conservatory attached to the south-east extension (Plate 29 and Plate 30). The extension mostly comprises exposed stone with a door on the south-west side with dressed quoins and lintel and tongue and groove plank door (Plate 31). The window to the north-east is a very tall 6-over-6 casement with dressed stone surrounds. There are two windows at first level the same as the one below. The change of stonework noted to the north-east elevation is not evident on this side. There is brick in the south-west side where the south-west elevation is also brick. The lower quoins are rounded to the north-east end of the elevation.



Plate 28 (left): South-east gable end of the main house



Plate 29 (right): South-east external elevation of the south-east extension and conservatory



Plate 30 (left): South-east external elevation of the conservatory



Plate 31 (right): South-east external elevation of the south-east extension

SOUTH-WEST EXTERNAL ELEVATION - MAIN HOUSE AND GARAGE

SOUTH-WEST EXTERNAL ELEVATION - CONSERVATORY

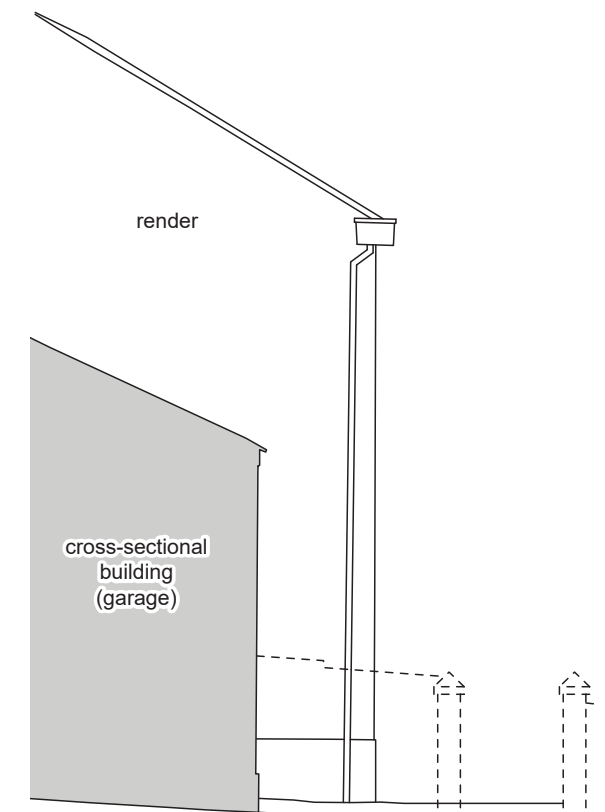
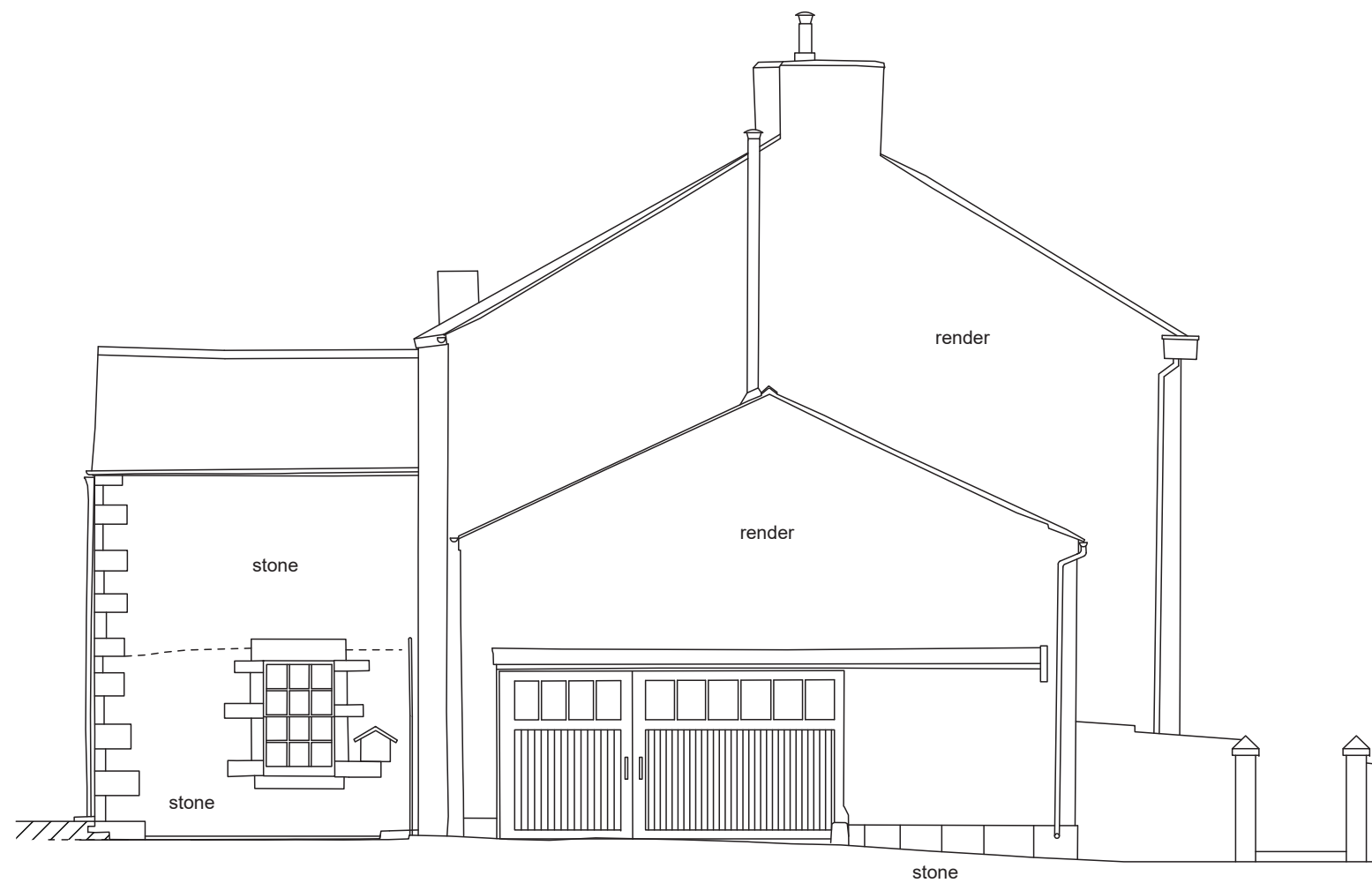


0 5m

Key: cross-sectional wall cross-sectional building --- edge uncertain

NORTH-WEST EXTERNAL ELEVATION - MAIN HOUSE AND GARAGE

NORTH-WEST EXTERNAL ELEVATION - MAIN HOUSE: SOUTH-WEST END





Key:  cross-sectional wall  cross-sectional building --- edge uncertain

Figure 3: North-west external elevation

NORTH-EAST EXTERNAL ELEVATION



SOUTH-EAST EXTERNAL ELEVATION



0 5m

Key:  cross-sectional wall  blocked feature  edge uncertain

Figure 5: South-east external elevation

4.3 Internal Detail

4.3.1 **Basement:** the cellar has a concrete floor and floorboards from the floor above visible on the joists in the ceiling (Plate 32). Some of the joists have nails for laths (Plate 33). The joists are supported by I-beams on concrete block 'columns' with timber shelves between (Plate 34 and Plate 35). The walls are painted white brick and stone. There are stone stairs up to the south-east on the north-east side of the room (Plate 36). These comprise dressed stones on brick. On the **north-east elevation** there is an alcove in the space next to the stairs on the north-west side (Plate 37) and the wall south-west of that is brick, with a round arch to the north-west side (Plate 38). The **south-east elevation** has a small alcove on the north-east side (Plate 39), a further opening to the south-west into a space under the building, and two more alcoves to the south-west (Plate 40). The **south-west elevation** is plain, with concrete columns with shelves between on the south-east side. The **north-west elevation** has an opening and external light at the south-west end (Plate 41). The opening has a heavy stone lintel and stone mullion with central band in relief and space for transoms. Iron rods are set in either side. The opening is brick. The centre of the elevation projects with brick columns and central block below the chimneybreast of the floor above (Plate 42), with two stone shelves, and there is a small alcove to the north-east (Plate 43).



Plate 32 (left): Detail of the ceiling at the south-west end of the basement

Plate 33 (right): Detail of the joists in the basement ceiling



Plate 34 (left): I-beam supports in the basement

Plate 35 (right): General view of the basement



Plate 36 (left): Stairs at the north-east end of the basement

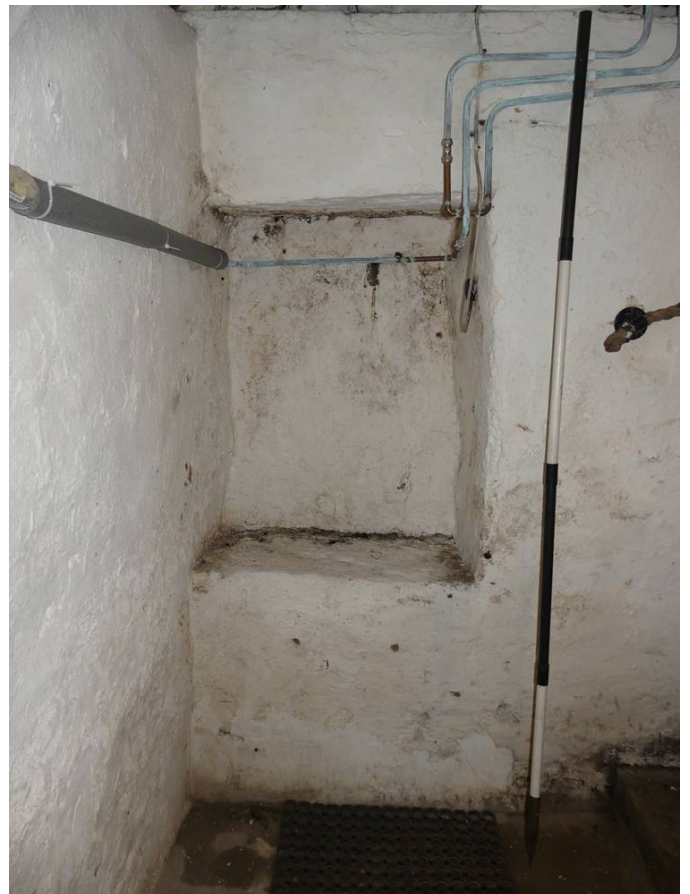


Plate 37 (right): Alcove in the north-east elevation of the basement



Plate 38 (left): Archway at the north-east end of the basement



Plate 39 (right): Alcove at the north-east end of the south-east elevation of the basement



Plate 40 (left): General view of the centre section of the south-east elevation of the basement



Plate 41 (right): Window at the south-west end of the north-west elevation of the basement



Plate 42 (left): General view of the centre section of the north-west elevation of the basement

Plate 43 (right): Alcove at the north-east end of the north-west elevation of the basement

4.3.2 **Ground floor Room 1 (G1):** this room is main room in the extension to the south-east with two small rooms on the north-east side. It has a modern tiled floor and flat plaster ceiling with a hanging timber drying rack. The walls are painted plaster. The main **north-east elevation** has two doorways, one at each end, with beaded plank and batten doors with moulded surrounds and modern cupboards in between (Plate 45 to Plate 47). Inside the rooms to the north-east there is a sink and toilet in the room to the north-west (Plate 48 and Plate 49), with a high window in the north-east elevation and boxing behind the toilet and early cistern, and shelves in the room to the south-east (Plate 50), with a high window and sliding timber cover (Plate 51). The **south-east elevation** has modern units and a central six-over-six light window (Plate 52). The plank and batten door to the south-west has a stop-chamfered surround. The winder for the drying rack is attached to the wall to the side (Plate 53). The **south-west elevation** has a central fireplace with a dressed stone surround and projecting moulded mantle and wide opening (Plate 54). The doorway to the north-west houses a beaded plank and batten door on strap hinges (Plate 55). The **north-west elevation** has modern kitchen units and a six-over-six casement window (Plate 56).



Plate 44 (left): Hanging timber drying rack in Room G1

Plate 45 (right): North-east elevation of Room G1



Plate 46 (left): Door to the north-west end of the north-east elevation of Room G1
Plate 47 (right): Door to the south-east end of the north-east elevation of Room G1



Plate 48 (left): Sink in the north-west room to the north-west side of Room G1



Plate 49 (right): Toilet in the south-east room to the north-west side of Room G1



Plate 50 (left): Shelves in the south-east room to the north-west side of Room G1



Plate 51 (right): Window in the south-east room to the north-west side of Room G1



Plate 52 (left): The south-east elevation of Room G1



Plate 53 (right): Winder for the drying rack



Plate 54 (left): Fireplace in Room G1



Plate 55 (right): Door at the north-west end of the south-west elevation of Room G1



Plate 56: North-west elevation of Room G1

4.3.3 **Ground floor Room 2 (G2):** the conservatory; this room has a tiled floor and glazed roof. The **south-east** and **south-west elevations** are glazed and timber construction on a low wall (Plate 57 and Plate 58). There is a double door to the south-west. There is a beaded plank and batten door in both the **north-east** and **north-west elevations**, which are otherwise plain plaster (Plate 59 and Plate 60). There is skirting board over the north-west side. There is an iron grate in the south-east end.



Plate 57 (left): General view of the south-east end of Room G2



Plate 58 (right): General view of the north-west end of Room G2



Plate 59 (left): Door in the north-east elevation of Room G2

Plate 60 (right): Door in the north-west elevation of Room G2

4.3.4 **Ground floor Room 3 (G3)**: this room, the kitchen, has a large quarry tile floor and flat plaster ceiling with iron meat hooks on the north-east side (Plate 61). There are three south-east/north-west beams across the room, which are very neatly finished with a fine chamfer (Plate 62). The walls are painted plaster. There is a window and door to the **north-east** (Plate 63). The door is an early beaded plank and batten door on early strap hinges (Plate 64 and Plate 65) behind the outer glazed door. The window is of 12 lights with a central six. The **south-east elevation** has a beaded plank and batten door on the north-east side in moulded surround (Plate 66) and chimneybreast to the south-west with brick effect cladding inside and modern timber lintel and Aga (Plate 67). There is a small, single light UPVC window to the south-west. The wall is tiled between the rows of hinged cupboard units to the **south-west** (Plate 68) and there is a modern timber service hatch. There is a six-panel door in moulded surround to the **north-west** (Plate 69).



Plate 61 (left): Meat hooks in Room G3



Plate 62 (right): Beams in Room G3



Plate 63: South-east elevation of Room G3



Plate 64 (left): Inside of the door in the north-west elevation of Room G3

Plate 65 (right): Outside of the door in the north-west elevation of Room G3



Plate 66 (left): Door in the south-east elevation of Room G3

Plate 67 (right): South-east elevation of Room G3

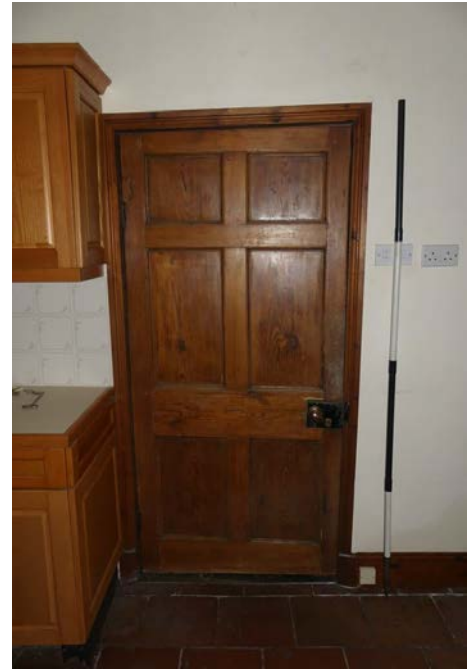


Plate 68 (left): South-west elevation of Room G3

Plate 69 (right): Door in the north-west elevation of Room G3

4.3.5 **Ground floor Room 4 (G4):** this room has a narrow board floor below the carpet. The ceiling is flat plaster with a wide arch on the north-east side (Plate 70). The walls are plaster and flock wallpaper and moulded skirting. The **north-east elevation** is plain apart from the modern serving hatch and early corner cupboard to the east (Plate 70). The **south-east elevation** has an alcove with moulded timber surrounds each side of the central chimneybreast (Plate 71). The fireplace has a plain splayed opening clad with stone and a similarly finished hearth (Plate 72). The alcoves have original decorative entablature decorated with triglyphs and roundels and scrolled panels below (Plate 73). The **south-west elevation** has a single window with slightly splayed jambs and moulded surrounds and sill (Plate 74). The **north-west elevation** has a single six-panel door in moulded surround (Plate 75).



Plate 70 (left): North-east elevation of Room G4

Plate 71 (right): South-east elevation of Room G4



Plate 72 (left): Fireplace in Room G4



Plate 73 (right): Detail of the decorated alcoves in Room G4



Plate 74 (left): Window in the south-west elevation of Room G4



Plate 75 (right): Door in the north-west elevation of Room G4

4.3.6 **Ground floor Room 5 (G5):** the downstairs corridor, aligned north-east/south-west has stairs at the **north-east** end. It has a carpet floor over boards and flat plaster ceiling with moulded cornice. The panelled arch at the north-east end is on moulded and fluted plinths with roundel details to the sides

(Plate 76 to Plate 78). The walls are plaster and paint and there is skirting board. The stairs are very plain. They have a simple turned newel with flat head and square balusters, two of which are iron rather than timber (Plate 79). There is a small two-panel door to the north-west (Plate 80) into the space under the stairs with a stone flag floor and board ceiling on joists and plastered walls. There is a further four-panel door to the south-west and an arch to the south-east, which is plain but with timber details. There are two further doors to the **south-east**, both with six-panel doors and moulded surrounds (Plate 81), one to the **north-west** in the same style, and one in return to cellar (Plate 82). The doorway to the **south-west** has a wide six-panel door with early door furniture and flanking engaged columns and fanlight over with plaster moulding (Plate 83).



Plate 76 (left): Stairs at the north-east end of Room G5

Plate 77 (centre): Front detail of decorative arch in Room G5

Plate 78 (right): Below detail of decorative arch in Room G5

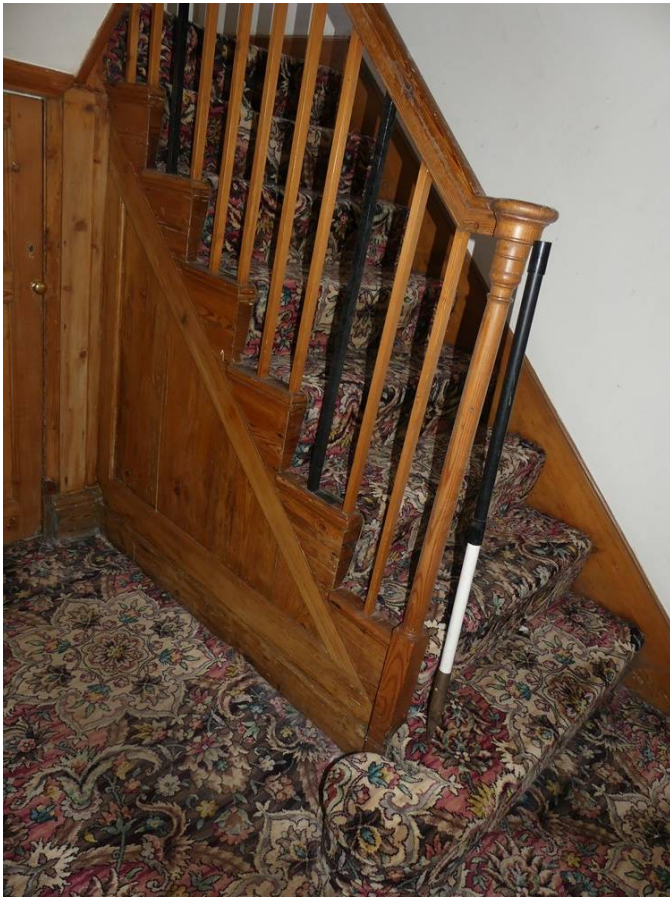


Plate 79 (left): Detail of the stairs in Room G5

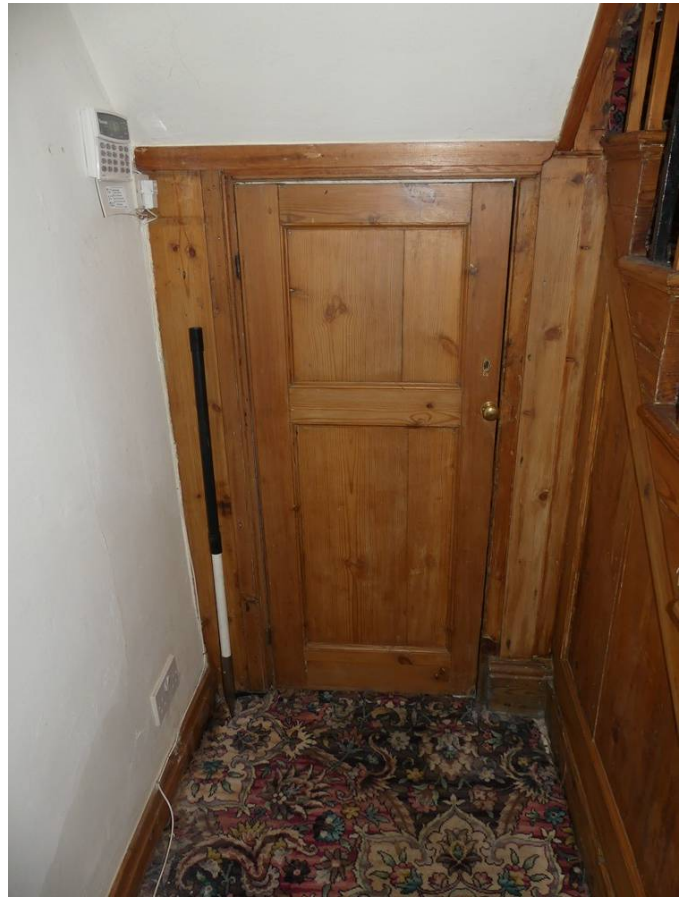


Plate 80 (right): Door to space below the stairs in Room G5



Plate 81 (left): Doors in the south-east elevation of Room G5



Plate 82 (right): Doors to the cellar and Room G7 at the north-east end of Room G5



Plate 83: Door at the south-west end of Room G5

4.3.7 **Ground floor Room 6 (G6):** this room has carpet over narrow boards. There is newspaper dated 1st June 2001 below the carpet. The walls are plaster and textured wallpaper on the ceiling with moulded cornice and fairly plain ceiling rose (Plate 84 and Plate 85). There is tall skirting on the walls which are otherwise plaster and textured wallpaper. The **north-east elevation** is plain (Plate 86). The **south-east elevation** has a doorway on the north-east side, with a six-panel moulded door in moulded surround, decorated with triglyphs (Plate 87). The **south-west elevation** has a wide six-over-six light sash window with shallow splayed reveals, panelled with central roundel (Plate 88 to Plate 90). The **north-west elevation** is plain except for the central fireplace and raised hearth with modern tiles, modern iron and stone insert and copper and iron grate and hood (Plate 91). It has a timber surround and fairly plain scrolled brackets and moulded entablature.



Plate 84 (left): Cornicing in Room G6



Plate 85 (right): Ceiling rose in Room G6



Plate 86 (left): North-east and south-east elevations of Room G6



Plate 87 (right): Door at the north-east end of the south-east elevation of Room G6



Plate 88 (left): South-west and north-west elevations of Room G6

Plate 89 (right): Window in the south-west elevation of Room G6



Plate 90 (left): Detail of window in Room G6

Plate 91 (right): Fireplace in Room G6

4.3.8 **Ground floor Room 7 (G7)**: this room is now a bathroom but was originally the pantry. The floor is timber laminate and the ceiling is flat plaster. The walls are plaster and paint with modern skirting. There is a six-light Yorkshire sash window to the **north-east** (Plate 92). The **south-east elevation** is plain. The **south-west elevation** has a six-panel door at the south-east end (Plate 93) and steps back to the north-west with a boxed section over the stairs to the cellar and timber shelves on curved brackets (Plate 94 and Plate 95). There is an alcove in a former doorway in the **north-west elevation** (Plate 96), with coat hooks on a batten (Plate 97), and there is a shower built into the north corner.



Plate 92 (left): North-east elevation of Room G7



Plate 93 (right): Door at the south-east end of the south-west elevation of Room G7



Plate 94 (left): Boxed section over the stairs in Room G7

Plate 95 (right): Shelving in Room G7



Plate 96 (left): Alcove in the north-west elevation of Room G7

Plate 97 (right): Coat hooks in the alcove in Room G7

4.3.9 **Ground floor Room 8 (G8)**: the main room of the garage has a concrete floor and painted walls. There are two north-west/south-east beams across the ceiling, supporting joists and modern boards of the floor above. There are tie rods running north-east/south-west. The **north-east elevation** has a central six-light fixed casement window with a column to the south-east of brick (Plate 98 to Plate 100) and the wall to the south-east is brick. The doorway to the south-east side houses a fairly late plank and batten door (Plate 101). The **south-east elevation** has timber stairs against it (Plate 102) behind a tongue and groove plank and batten stud wall to the north-west (Plate 103). There is a doorway, blocked with brick, behind the stairs (Plate 104). The **south-west elevation** is plain with a sliding door in the centre (Plate 105). The door is a four-panel, early 20th century door, on a metal rail, with early hooks on the wall to the south-east. The **north-west elevation** has a wide doorway, with columns each side with

stone corbels on top, and an iron column in the centre supporting a sawn timber beam (Plate 106 and Plate 107).



Plate 98 (left): North-east elevation of Room G8



Plate 99 (right): Window in the north-east elevation of Room G8



Plate 100 (left): Column to the side of the window in Room G8



Plate 101 (right): Door at the south-east end of the north-east elevation of Room G8



Plate 102 (left): Stairs along the south-east wall of Room G8

Plate 103 (right): Stud wall around the stairs in Room G8



Plate 104 (left): Blocked doorway in the south-east elevation of Room G8

Plate 105 (right): General view of the south-west elevation of Room G8



Plate 106 (left): North-west elevation of Room G8

Plate 107 (right): Iron column in the doorway on the north-west elevation of Room G8

4.3.10 **Ground floor Room 9 (G9)**: the storeroom to the south-west side of the garage has a flag floor, limewashed walls, and a single north-west/south-east beam across it and joists supporting the ceiling (Plate 108). The **north-east elevation** is plain except for the remains of a tall built-in cupboard on the north-west side with moulded entablature and two later shelves on metal brackets and a shelf in the bottom (Plate 109). There is a sliding door to the south-east and modern shelves on long brackets with simple pegs (Plate 110). The **south-east elevation** has a central projecting flue (Plate 111). The **south-west elevation** has various benches and units and a central window in plain surround (Plate 112). The **north-west elevation** is plain apart from a large attached rough cupboard or bin (Plate 113).



Plate 108 (left): Ceiling in Room G9

Plate 109 (right): North-west end of the north-east elevation of Room G9



Plate 110 (left): South-east end of the north-east elevation of Room G9



Plate 111 (right): South-east elevation of Room G9



Plate 112 (left): General view of the south-west elevation of Room G9



Plate 113 (right): North-west elevation of Room G9

4.3.11 **First floor Room 1 (F1)**: the first floor room of the extension to the south-east has carpet over narrow floorboards, a flat plaster ceiling, and the walls are textured wallpaper with moulded skirting. The **north-east** and **north-west elevations** are plain (Plate 114). There are two windows in the **south-east elevation** with splayed jambs and moulded surrounds (Plate 115). The **south-west elevation** has two, modern, built-in cupboards either side of the chimneybreast (Plate 116). The fireplace has a moulded stone surround and timber mantle on curved brackets with brick and stone inside (Plate 117). The decorative mirror over the fireplace is screwed on over the wallpaper classical scene. There is a door in the west corner with four moulded panels in a moulded surround (Plate 118).



Plate 114 (left): North-east elevation of Room F1

Plate 115 (right): South-east elevation of Room F1



Plate 116 (left): South-west elevation of Room F1

Plate 117 (right): Fireplace in Room F1



Plate 118: Doorway in the west corner of Room F1

4.3.12 **First floor Room 2 (F2)**: this room is carpeted and has a flat ceiling. There is a window to the **north-east** with a shallow window seat and moulding (Plate 119). There is a fireplace and chimneybreast to the **south-east** with a cupboard in the north-east side with one two-panel door and one one-panel door (Plate 120 and Plate 121). The fireplace has beaded modern surround and dentil moulding below the mantle and modern iron insert. The window to the south-west of the fireplace has splayed jambs and seat (Plate 120). The **south-west elevation** is plain (Plate 122). The door to the **north-west** is a six-panel door with moulded surround.



Plate 119 (left): North-east elevation of Room F2

Plate 120 (right): South-east elevation of Room F2



Plate 121 (left): Cupboard in the side of the fireplace in Room F2

Plate 122 (right): General view of the south-west and north-west elevations of Room F2

4.3.13 **First floor Room 3 (F3)**: this room has carpet over narrow floorboards. The ceiling is flat and the walls are painted plaster with beaded skirting. There are two cupboards set into the **south-east** wall, each with a pair of two and one panel doors (Plate 123 and Plate 124). The window to the **south-west** has moulded surrounds. The doorway to the **north-west** houses a six-panel door in moulded surround.



Plate 123 (left): Cupboards in the south-east elevation of Room F3 with the doors closed

Plate 124 (right): Cupboards in the south-east elevation of Room F3 with the doors open



Plate 125 (left): Window in the south-west elevation of Room F3



Plate 126 (right): Door in the north-west elevation of Room F3

4.3.14 **First floor Room 4 (F4)**: this room forms a corridor from the stairs at first floor level. It is carpeted and has a flat ceiling with an arch at the **north-east** end to the stairs (Plate 127). The stairs have a fairly simple turned newel and square balusters, two of which are iron rather than timber (Plate 128). There is a tall stair window beyond, with splayed jambs, moulded surrounds and window seat. There are two doors to the **south-east** and two to the **north-west**. All are six-panel with moulded surrounds. There is a scar on the walls towards the **south-west** end of the corridor and the skirting changes, suggesting a partition was in place here previously, and a section of the wall sounds hollow at the south-west end on the south-east elevation (Plate 129). The window to the **south-west** has plain surrounds (Plate 130).



Plate 127 (left): Archway at the north-east end of Room F4

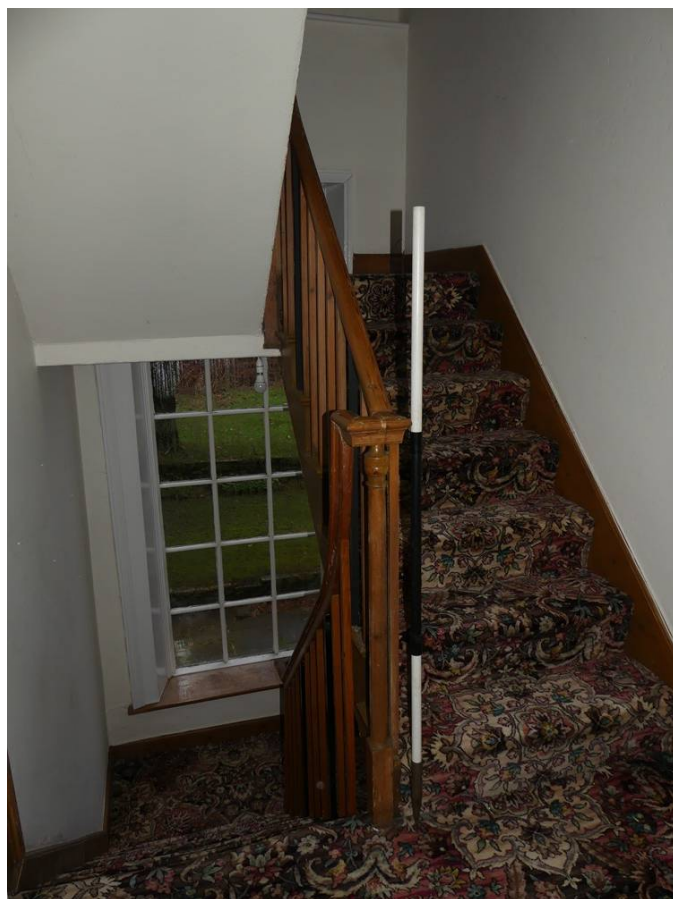


Plate 128 (right): Stairs at the north-east end of Room F4



Plate 129 (left): Scar in the north-west elevation of Room F4

Plate 130 (right): Window at the south-west end of Room F4

4.3.15 **First floor Room 5 (F5)**: this room has floral pattern flock wallpaper throughout, including the ceiling, and a mix of plain and moulded skirting. There is carpet above north-east/south-west aligned floorboards. The **north-east elevation** is plain with moulded skirting (Plate 131). The **south-east elevation** has a six-panel door in moulded timber surround with moulded skirting and is otherwise plain (Plate 132). The **south-west elevation** has a 12-light vertical sash (six-over-six) window, with horns, slightly splayed jambs, moulded timber surround and sill (Plate 133 and Plate 134). The **north-west elevation** has a central fireplace with fairly plain moulded surround, mantle piece supported by a single column at either end, and a cast-iron insert with brick behind (Plate 135). There is a cupboard to the south-west side with timber panel door and shelves inside (Plate 136 and Plate 137). The skirting is plain to the south-west side of the chimneybreast, which steps out and has vertical sides.



Plate 131 (left): North-east and south-east elevations of Room F5

Plate 132 (right): Door in the south-east elevation of Room F5



Plate 133 (left): South-west and north-west elevations of Room F5

Plate 134 (right): Window in the south-west elevation of Room F5



Plate 135 (left): Fireplace in Room F5

Plate 136 (centre): Cupboard to the side of the fireplace in Room F5 with the doors closed

Plate 137 (right): Cupboard to the side of the fireplace in Room F5 with the doors open

4.3.16 **First floor Room 6 (F6)**: the walls of the first-floor bathroom are painted plaster. There are two north-east/south-west beams (boxed and painted) across the ceiling. There is a tongue and groove floor above narrow north-east/south-west floorboards and moulded skirting throughout. The **north-east elevation** has a central vertical sliding sash 12-light window (six-over-six) in a timber casement, with timber sill and slightly splayed, decorated jambs (Plate 138). There is a toilet to the south-east corner. The **south-east elevation** has boxing to the north-east and a built-in shower unit with glass door and plain timber surround (Plate 139). There is a six-panel door to the south-west end in moulded surround. The **south-west elevation** is plain and angled at the corner of the south-west and north-west elevations. The **north-west elevation** is angled with a sink attached to the south-west side and a bath to the north east side with low tiled shelf around (Plate 140). There is a fairly central alcove, with shelves, behind. This appears to be probably a blocked door (or window) from the garage side (Room F7).



Plate 138: Window in the north-east elevation of Room F6



Plate 139 (left): South-east elevation of Room F6



Plate 140 (right): North-west elevation of Room F6

4.3.17 **First floor Room 7 (F7)**: the room over G8/G9 of the garage has a chipboard floor and is open to the ceiling with multiple modern trusses and roof felt. The walls are brick with some plaster on the south-east side. The **north-east** and **north-west elevations** have modern courses of brick in English Garden Bond in a 5:1 ratio on top of older brick (Plate 141). The **south-west elevation** is all old brick in Flemish Bond and some headers (Plate 142). The **south-east elevation** is mostly finished with plaster over brick (Plate 143 and Plate 144). There is a doorway on the north-east side blocked with brick (Plate 145).



Plate 141 (left): General view of the north-east and north-west elevations of Room F7



Plate 142 (right): General view of the south-west elevation of Room G7



Plate 143 (left): General view of the south-east elevation of Room F7

Plate 144 (right): General view of the top of the stairs in Room G7

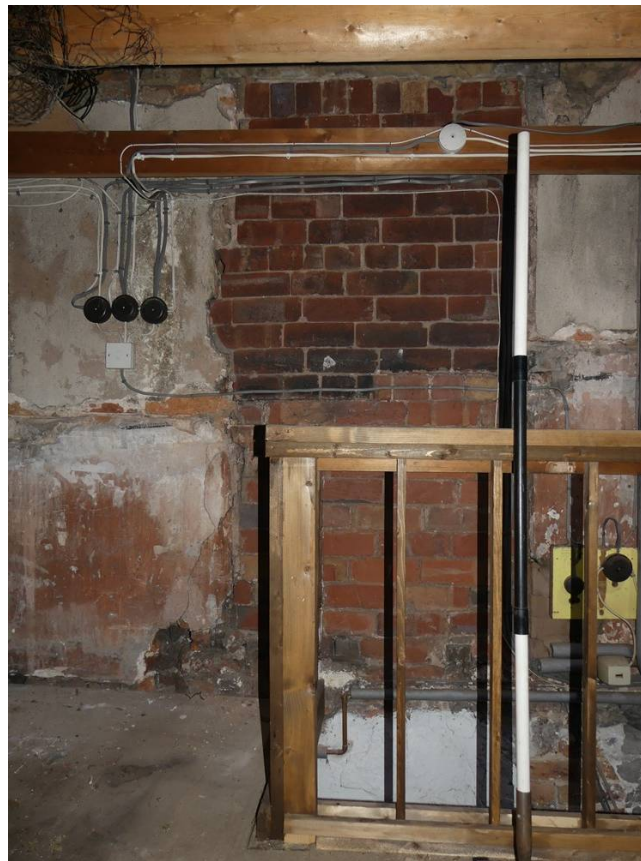


Plate 145: Blocked door in the south-east elevation of Room F7

4.3.18 **Second floor Room 1 (S1)**: the walls and ceiling are all plain flat plaster and painted. There is underlay glued over the floor and no skirting board. The ceiling slopes at the north-east side of the room. The **north-east elevation** has a central horizontal sliding sash window (effectively three casements of six-lights with the central section sliding) in a plain surround (Plate 146). The **south-east elevation** is stepped around the angled sloping chimneybreast, which slopes diagonally towards the centre of the house (Plate 147). The elevation also slopes in at the south corner of the room, at the corner of the south-east and south-west elevations where the chimneybreast intrudes from Room S2. The **south-west elevation** is plain. The **north-west elevation** has a central doorway in a moulded timber surround with original plank and batten timber door on strap hinges (Plate 148).



Plate 146 (left): Window in the north-east elevation of Room S1



Plate 147 (right): South-east elevation of Room S1



Plate 148: North-west elevation of Room S1

4.3.19 **Second floor Room 2 (S2)**: the walls and ceiling are all plastered and painted. There is loss of head height where the ceiling slopes to the south-west side. The floor is carpeted above wide, north-east/south-west aligned, timber floorboards and there is moulded skirting throughout. The **north-east elevation** is plain. The chimneybreast on the **south-east elevation** slopes to the north-east above the fireplace, directing smoke to the centre of the gable (Plate 149). The fire surround is dressed stone with reeding and roundels that has been painted, with a cast-iron insert (Plate 150). The **south-west elevation** has a central, vertical sliding six-light sash window (three-over-three) with no horns, timber frame and moulded timber surround (Plate 151). The **north-west elevation** is plain apart from the original plank and batten door on strap hinges in moulded timber surround (Plate 152).



Plate 149 (left): South-east elevation of Room S2

Plate 150 (right): Fireplace in Room S2



Plate 151 (left): Window in the south-west elevation of Room S2

Plate 152 (right): Door in the north-west elevation of Room S2

4.3.20 **Second floor Room 3 (S3)**: this room forms a central north-east/south-west corridor along the second floor. It has plastered ceiling and walls, all of which are painted and plain. It is open to the stairs at the **north-east** end (Plate 153). The stairs have square-cut timber balusters below a moulded timber handrail, the balusters possibly being modern replacements or repairs (Plate 154). The floor is carpeted which continues down the stairs. There is a small step above the window on the stairs, the top part of the window from the floor below visible above the small landing at the north-east end of the room. The **south-east elevation** has moulded skirting board and moulded timber door surrounds and original plank

and batten doors to Room S1 and S2. The **south-west elevation** has a six-light (three-over-three) vertical sliding sash window with no horns in a moulded timber surround (Plate 155). The skirting below is plain. The **north-west elevation** is plain with moulded skirting. There is a slight step to the north-west at the north-east end. Both doors have moulded timber surrounds. The door to Rom S4 is a moulded four-panel door and the one to Room S5 is a plank and batten door.



Plate 153 (left): North-east end of Room S3

Plate 154 (right): Stairs at the north-east end of Room S3



Plate 155: South-west end of Room S3

4.3.21 **Second floor Room 4 (S4):** the walls and ceiling are all plastered smooth, painted and plain, with plain skirting throughout. The floor is part carpet over a mix of narrower and broader timber floorboards, all seemingly north-east/south-west. The wider floorboards are to the north-east side of the chimneybreast. The **north-east elevation** is plain. The **south-east elevation** is plain with built-in wardrobes and side units (Plate 156), with a filled-in gap noted in the skirting. Central on the **south-west elevation** is a vertical-sliding six-light (three-over-three) sash timber window with moulded timber surround (Plate 157 and Plate 158). The rest of the elevation is plain. Some head height is lost to the south-west side of the room where the ceiling slopes. The **north-west elevation** has a fireplace with moulded surround and painted and carved decoration (the same as the top part of the fireplace in Room S2) and a decorated cast-iron insert. The hearth stone is apparent where the carpet has been lifted. The chimneybreast slopes from ground to ceiling to the north-east side of the fireplace and steps back slightly to the north-east side (Plate 159). The remainder of the elevation is plain.



Plate 156 (left): South-east elevation of Room S4

Plate 157 (right): South-west and north-west elevations of Room S4



Plate 158 (left): Window in the south-west elevation of Room S4

Plate 159 (right): North-west elevation of Room S4

4.3.22 **Second floor Room 5 (S5)**: the walls and ceiling are mostly wallpapered, with plain skirting and tongue and groove floorboards north-east/south-west. There is a roof hatch in the south corner with plain timber surround. The **north-east elevation** is tiled around the bath and showerhead. There is a central eight-light horizontal sliding sash window in a very plain timber casement (each side of four lights, two-over-two) (Plate 160). The south-east end of the surround is chamfered whereas the north-west end is moulded; the top and bottom are both plain. There are some broken tiles on the sill. There is a toilet to the south-east. The **south-east elevation** has a sink and splashback tiles and boxing to the base of the elevation. The door to the south-west appears to be the original plank and batten door on strap hinges in a moulded timber surround (Plate 161). The **south-west elevation** is plain, with stud partition around a water cylinder, and angled inside the airing cupboard (Plate 162). The north-west elevation also steps out with a stud wall around the airing cupboard on the south-west side. The door is a four-panel door with a plain timber surround. The north-east end of the elevation is tiled around the bath with a low tiled shelf to the back and sides of the bath. Timber floorboards are visible below the bath where the side panel has been removed.



Plate 160 (left): North-east elevation of Room S5



Plate 161 (right): Door in the south-west elevation of Room S5



Plate 162: Airing cupboard in Room S5

4.3.23 **Attic:** the attic is accessible from Room S5 and it is not easy to gain access further south-east. The roof is supported by brick walls extending to the apex. There are two sawn purlins per pitch and a wide ridge plank (Plate 163). The wall is plastered to the north-west end. Holes have been broken through the dividing brick walls (Plate 164).

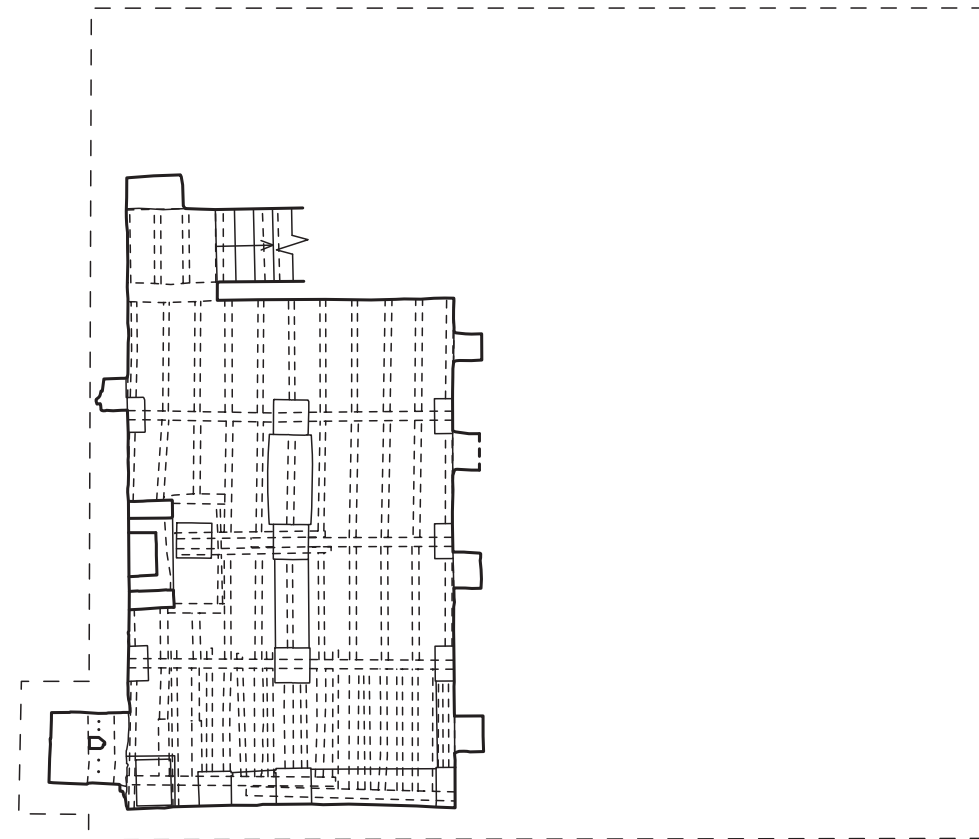


Plate 163 (left): Internal roof structure

Plate 164 (right): Dividing brick wall in the attic

[THIS PAGE HAS BEEN DELIBERATELY LEFT BLANK]

BASEMENT PLAN




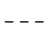
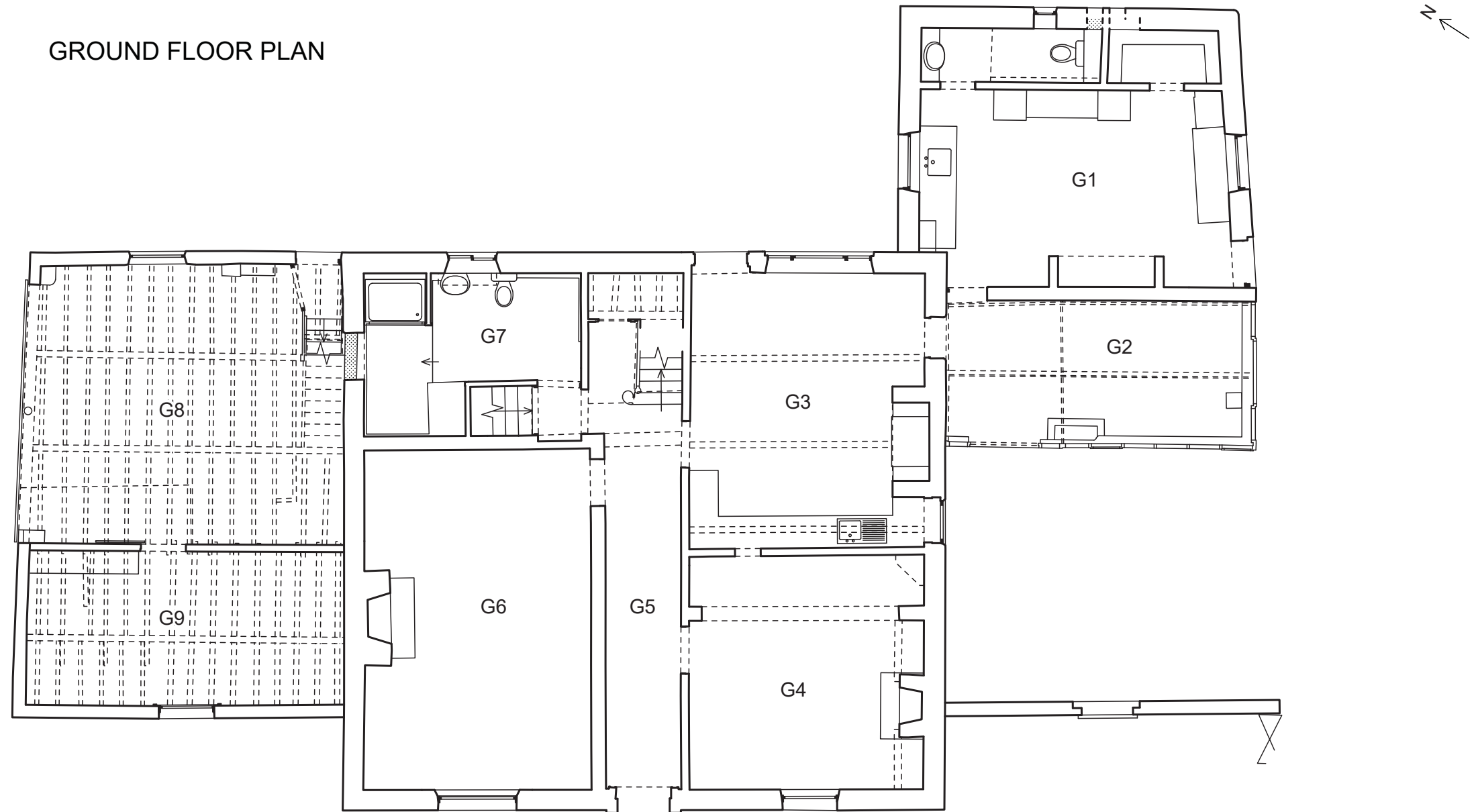
Key:  cross-sectional timber  overhead features

Figure 6: Basement plan

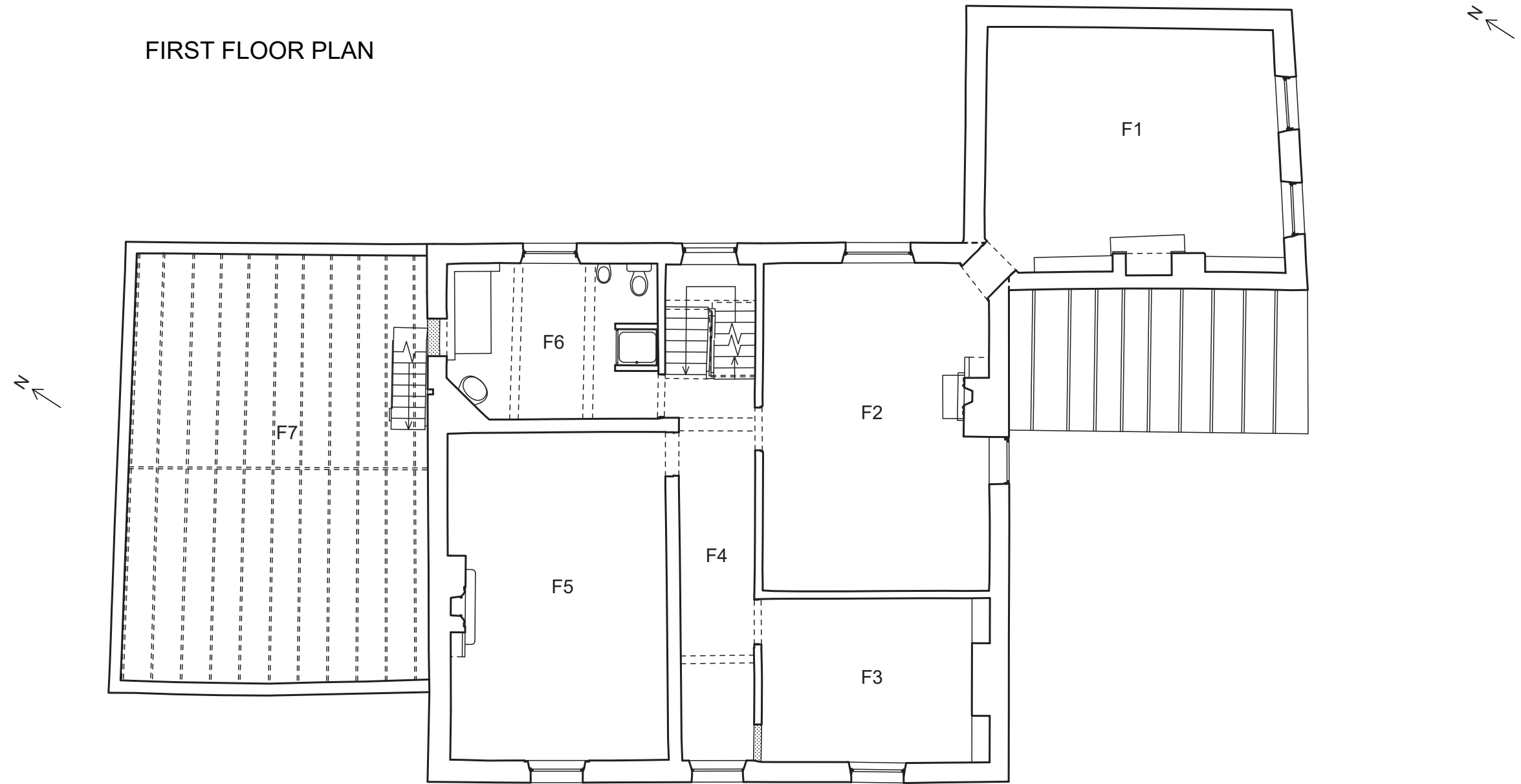
GROUND FLOOR PLAN



Key: blocked feature G2 room number cross-sectional timber - - - overhead features

Figure 7: Ground floor plan

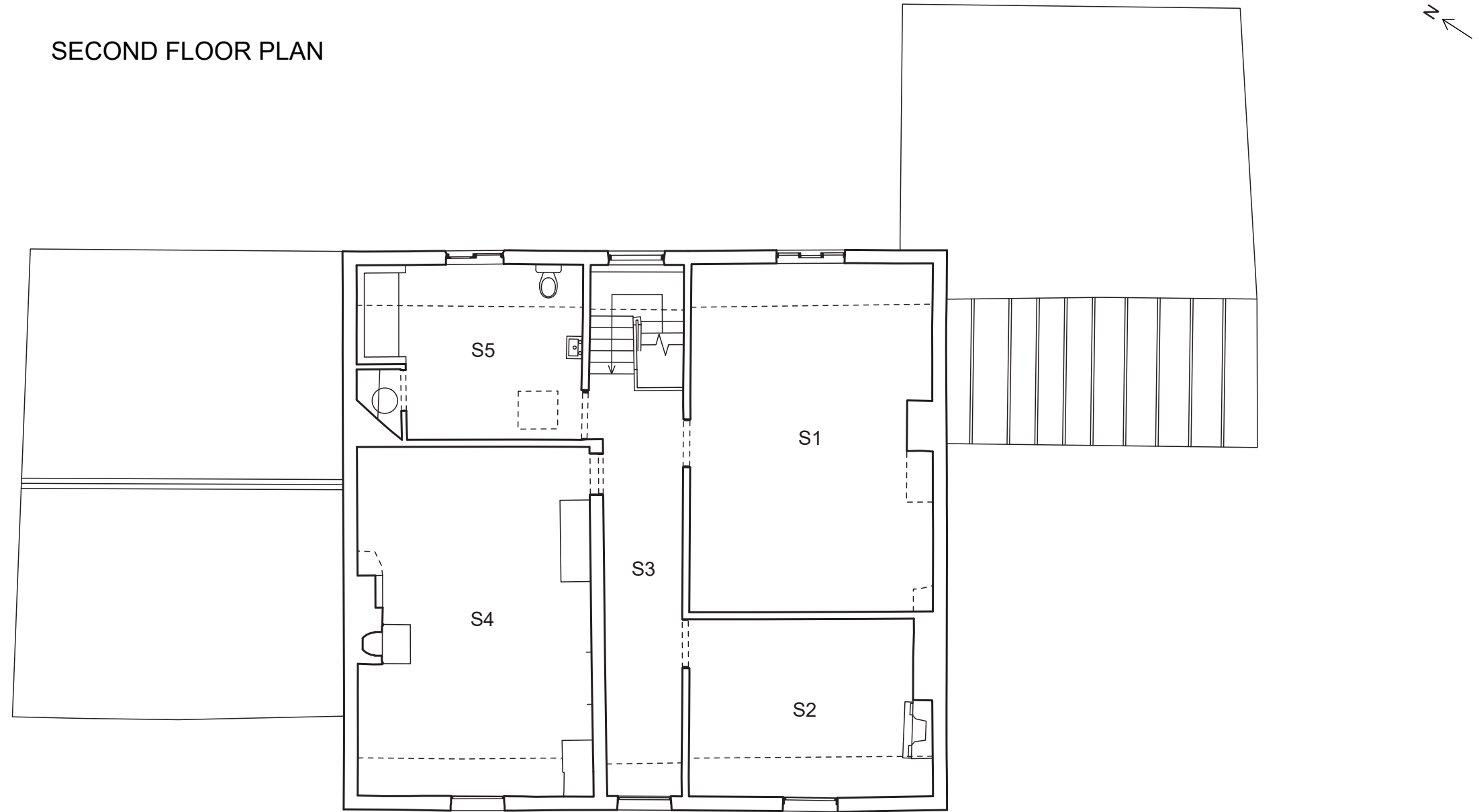
FIRST FLOOR PLAN



Key: blocked feature room number cross-sectional timber overhead features

Figure 8: First floor plan

SECOND FLOOR PLAN



Key: S2 room number ■ cross-sectional timber --- overhead features

Figure 9: Second floor plan

5. Discussion

5.1 Introduction

5.1.1 The documentary evidence combined with the results of the building recording have allowed five phases of development to be determined. A comparison with the documentary evidence allows some relatively detailed dating to be included, although this has to allow for the relative inaccuracies of some of the maps.

5.2 Phasing

5.2.1 **Phase 1 (late 18th century):** Fisher House is generally thought to have been constructed in the late 18th century by Rev John Fisher, sometime after he arrived in Rivington in 1763. Although it is not certain, it appears to be shown on Yate's plan of 1786, although some details do not match the present building. The form of the property, originally a double-pile plan house with flanking wings either side creating a wide frontage, is certainly in keeping with the classically inspired architecture of the time and has elements similar to other buildings of the period from the wider region, such as the front door with its elaborate surround, panelled door, and fan light (White 2000; Champness 2011). The surviving examples of sash windows without horns are also likely to pre-date the early 19th century (Wedd 1999), and the surviving examples of horizontal sliding sash casements, known as a 'Yorkshire sash', date from as early as the 1670s (The Georgian Group 2004). However, much of the internal detail appears later in style and belongs to the early 19th century (see Phase 2 below), and it is therefore entirely possible that the entire house was not built until this date, especially given the lack of direct documentary evidence for it in the 18th century. The classical symmetrical style of the late 18th century continued to be used into the first few decades of the 19th century, so the house would still be in keeping with this date. Regardless, the initial phase comprised the main double-pile plan house, made up of Rooms G3-G7, F2-F6, and S1-S5, and shallower flanking wings. The extent of these at this time is not clear due to later modification, but the north-west wing probably only comprised Room G9, while the north-east wing has almost entirely been demolished, with the exception of the south-west wall, which now forms just a façade with empty space behind. Interestingly, in the cellar there were the remains of an apparent mullion and transom window in the cellar light in the west corner (Plate 41), which would potentially suggest evidence for an even earlier structure of perhaps 17th or early 18th century date, assuming this was not reused and brought from elsewhere. Interestingly, the large door hung on strap hinges in Room G3 is also of a type that suggests a relatively early date, perhaps even early 17th century (Alcock and Hall 2002, 22), although this too could have been reused. What is unusual about the form of the core of Fisher House is the manner in which the roof has been supported, by carrying the dividing walls all the way to the roof with no trusses; the reason for this uncertain, especially as it seems to have meant there was initially no access between the different parts of the roof space until holes were broken through the walls.

5.2.2 **Phase 2 (early 19th century):** as already mentioned, much of the internal decorative detail is more fitting with an early 19th century date, in particular the main staircase, with its plain square balusters and relatively simple newel posts, is more in keeping with a date of c1800-1820 (Burton 2001, 40-45). Similarly, some of the fireplaces are more in keeping with this period too, all of them being relatively plain and more in keeping with the Regency period (Burton and Porten 2000, 36-37). Whether this means that the house was in fact not built until this period or whether it was just subject to a major refurbishment is unclear, although it is difficult to see how the stairs could have been substantially remodelled. The extent of the plan at this time is also unclear; the earliest map evidence appears to show the central part of the house and the flanking wings certainly existed by 1845, with a porch to the rear (the position of which is now evident as a scar on the north-east external elevation). More interesting is the description from 1837 (see Section 3.2.4), which can be used to identify specific rooms within the current house: the dining and drawing room presumably Rooms G6 and G4 respectively, the breakfast room and kitchen Room G3, the butler's pantry, store, and scullery Room G7 and perhaps the cellar, and the seven bedrooms on the first and second floor. The coach house, three-stalled stable, and shippon were presumably in the location of Rooms G9 and perhaps G8, although the latter does not appear to have been added until later. The laundry was perhaps in Room G1, which was certainly used for that purpose later. However, this would indicate that the east projection of the house (but only to ground floor level and so comprising

Room G1, see *Section 5.2.4* below), which is clearly a later addition, was added sometime between the house being built and 1837. It is important to note that the Fisher family owned the property until well into the late 19th century, so the name 'Fisher House' could have been applied any time from the late 18th century onwards.

5.2.3 Phase 3 (mid-to-late 19th century): the map evidence shows the extension from the east corner was constructed between 1847 and 1892; however, the evidence from the building itself shows that this was originally a single-storey addition, which was raised to the current two storeys in this period, creating Room F1. Access was possible through the existing addition at ground floor level, and appears to have been knocked through into the main block at the east corner at first floor level. Map evidence also shows that the space between Rooms G1/F1 and the south-east wing was also filled by this phase, although no trace of this now remains, and that the north-west wing had been extended to the north-west to create Room G8 and presumably the space above. This was accessible by doors from Room G7 and F6 and presumably provided additional service buildings such as stabling. This whole phase probably corresponds to the renovation said to have been carried out after 1859 and perhaps in connection to it being used as a school (see *Section 3.2.4*).

5.2.4 Phase 4 (early 20th century): the map evidence demonstrates that part of the south-east wing was to have been demolished between 1907 and 1927, evidently reducing it to just the free-standing section of façade wall that now remains, with open space behind. A short-lived extension was also added to the rear of the building at the north-west end but no trace of this now remains. It is apparent from within the building that the principal other change at this date was the conversion of Room G8 into a motorcar garage with a sliding door, which probably led to the blocking of the doorways into the main house and other alterations to the upper level. The fittings are of interest because R Slinger of Preston was established in 1858 and still operates today (Slingers 1858 Ltd 2022), while Coburn, based on Cambridgeshire, also still operates but was established in 1911, which would fit well with this phase (Coburn Sliding Systems 2023).

5.2.5 Phase 5 (later 20th century to date): more recent changes are less extensive, with the exception of general modernisation within the house, in particular in areas such as the kitchen and bathrooms (although Room G7 still retains shelving presumably from when it was previously used as a scullery or store). The porch on the north-east elevation was evidently demolished in this phase as was the short-lived Phase 4 addition to the north-west end of the house. Other more substantial changes internally include structural improvements evident in the cellar in the form of new iron girders on concrete block columns and the creation of a conservatory (Room G2) in the space formed on the south-east side of the building following the demolition of the rear part of the south-east wing.

5.3 Significance

5.3.1 Fisher House is a Grade II Listed Building (Historic England 2022a; see *Appendix 2*) and so is statutorily protected and of at least local significance. Although there is evidence that it was constructed in the late 18th century, and there are elements within the building that are potentially older, it is likely that much of the surviving decorative scheme belongs to the early 19th century and the building has been subject to a number of alterations since. The majority of these relate to outlying and less significant elements rather than the double-pile core of the building, but it is unfortunate that its south-east flanking wing was reduced to just a façade sometime in the early 20th century as this severely impacted on what would have originally been an imposing symmetrical front elevation, with service rooms largely hidden in the wings. Nevertheless, the creation of an extension to the east, probably to house a laundry in the early 19th century and a large garage, no doubt for motor vehicles, in the early 20th century reflect the changing needs of the building over time, particularly in its more functional areas.

6. Bibliography

6.1 Primary and Cartographic Sources

NA IR 29/18/269, 1845 *Tithe apportionment of Rivington (Township in the Parish of Bolton le Moors), Lancashire*

NA IR 30/18/269, 1850 *Plan of Lands in the Township of Rivington in the Parish of Bolton-le-Moors and County Palatine of Lancaster*

Ordnance Survey, 1849 *Lancashire Sheet 86*, 1:10,560, surveyed in 1845-7

Ordnance Survey, 1894 *Lancashire Sheet LXXXVI.1, First Edition, 1894*, 1:2,500, surveyed in 1892

Ordnance Survey, 1908 *Lancashire Sheet LXXXVI.1, Edition of 1908*, 1:2,500, re-surveyed in 1892, revised in 1907

Ordnance Survey, 1929 *Lancashire Sheet LXXXVI.1, Edition of 1929*, 1:2,500, re-surveyed in 1892, revised in 1927

Ordnance Survey, 2015 *Southport & Chorley, Wigan, Formby & Ormskirk*, OS Explorer **285**, 1:25,000

RG8/Piece 2262/Folio 532/Page 11, 1851 *Census*

RG9/Piece 3118/Folio 13/Page 4, 1861 *Census*

RG9/Piece 3118/Folio 14/Page 5, 1861 *Census*

RG10/Piece 4196/Folio 14/Page 4, 1871 *Census*

RG11/Piece 4217/Folio 12/Page 6, 1881 *Census*

RG12/Piece 3422/Folio 9/Page 2, 1891 *Census*

RG13/Piece 3933/Folio 11/Page 3, 1901 *Census*

Registration District Number 475/Enumeration District 07/Piece 25199, 1911 *Census*

Yates, W, 1786 *The County Palatine of Lancaster*

6.2 Secondary Sources

Alcock, NW, and Hall, L, 2002 *Fixtures and Fittings in Dated Houses 1567-1763*, CBA Practical Handbook in Archaeology **11**, 2nd edn, York

Anon, nd *Fisher House*, no location

Burton, N, 2001 *Georgian Stairs*, London

Burton, N, and Porten, L, 2000 *Georgian Chimneypieces*, London

Champness, J, 2011 *Country Houses of Lancashire and Their Builders*, Lancaster

Chartered Institute for Archaeologists (CIfA), 2014a *Standards and Guidance for the Archaeological Investigation and Recording of Standing Buildings or Structures*, revised edn, Reading

CIfA, 2014b *Standard and Guidance for Archaeological Desk-Based Assessment*, revised edn, Reading

CIfA, 2014c *Standard and Guidance for the Creation, Compilation, Transfer and Deposition of Archaeological Archives*, revised edn, Reading

Coburn Sliding Systems, 2023 *About Us*, <https://www.coburn.co.uk/about-us/?cn-reloaded=1>

Countryside Commission, 1998 *Countryside Character, Volume 2: North West*, Cheltenham

Historic England, 2016 *Understanding Historic Buildings: A Guide to Good Recording Practice*, no location

Historic England, 2022a *Fisher House*, <https://historicengland.org.uk/listing/the-list/list-entry/1072508?section=official-list-entry>

Historic England, 2022b *Lever Park*, <https://historicengland.org.uk/listing/the-list/list-entry/1000948?section=official-list-entry>

Lancashire County Council, nd *Fisher House Temperance Hotel, Rivington*, <https://redrosecollections.lancashire.gov.uk/view-item?i=220055&WINID=1673888578777>

Minerva Heritage, 2021 *Fisher House, Rivington Lane, Rivington, Bolton, BL6 7SL: Heritage Statement*, unpubl rep

Slingers 1858, 2022 *Welcome to Slingers*, <https://www.slingers1858.co.uk/>

The Georgian Group, 2004 *The Georgian Group Guides No. 1 Windows*, London

Wedd, K, 1999 *Care for Victorian Houses Number Nine: Timber Windows*, London

White, A, 2000 *The Buildings of Georgian Lancaster*, Lancaster

Appendix 1: Listed Building Details

Heritage Category: Listed Building

Grade: II

List Entry Number: 1072508

Date first listed: 17-Apr-1967

Statutory Address: FISHER HOUSE, RIVINGTON LANE

County: Lancashire

District: Chorley (District Authority)

Parish: Rivington

National Grid Reference: SD 62736 14459

Details:

House. Late 18th century, altered. Stored stucco on brick, with stone plinth and dressings, roof of stone slate (front) and slate (rear). Double depth plan of three bays and three storeys, symmetrical, with gable chimneys and flanking two storey service wings (that on right mostly demolished); central round-headed doorway in moulded surround with impost, door of six hexagonal panels, fanlight with radiating glazing bars; two 12-pane sashes at ground floor (that on the left larger in both dimensions and breaking the plinth) and three at first floor all with splayed stone heads, three six-pane sashes at second floor; wooden eaves gutter supported on brackets and lined with lead. Set back at each end a brick service wing, that on the left with one 12-pane sashed window (altered as garage), that on the right reduced to a screen wall with blocked window. *Interior:* kitchen has back door of double-layered horizontal and vertical planks; staircase: doglegged, with open string, stick balusters, ramped handrail. History: said to have been built by Rev John Fisher, incumbent of Church of Holy Trinity 1763-1813.

Appendix 2: Census information 1851-1901

Rivington was historically part of Bolton le Moors parish; however, it was not possible to find Fisher House in the 1841 census.

1851 Census (RG8/Piece 2262/Folio 532/Page 11)

Place	Name	Age	Profession	Place of birth
Fisher House	Dorothy Radcliff	53	Gentlewoman, annuitant	Lancashire, Walton on the Hill
	Edward Radcliff	24	Commission agent for the sale of wines and spirits, cigars and oils &c	Lancashire, Walton on the Hill
	Oliver Cooper Polland	29	Surgeon, not practising	Lancashire, Chorley
	Dorothy Stavely	41	Cook	Aysgarth, Yorkshire

1861 Census (RG9/Piece 3118/Folio 13/Page 4; RG9/Piece 3118/Folio 14/Page 5)

Place	Name	Age	Profession	Place of birth
Fisher House	J P Gilbert	44	Unitarian Minister	Devon: Plymouth
	Catharine Gilbert	43		Warwick Coventry
	Frederick Fisher	14	Scholar	Yorkshire, Sheffield
	Henry Fisher	11	Scholar	Yorkshire, Sheffield
	Maria L Hoppen	10	Scholar	Devon, Plymouth
	Mary Ann Manning	24	House servant and cook	Warwick: Coventry
	Ann Whittle	11	Girl of all work	Lancashire: Rivington

1871 Census (RG10/Piece 4196/Folio 14/Page 4)

Place	Name	Age	Profession	Place of birth
Fisher House	Dynes Elizabeth Gorden	17	J W Crompton Farms; servant	Lancashire, Liverpool
	Elizah J Morris	29	servant	Lancashire, Bury

1881 Census (RG11/Piece 4217/Folio 12/Page 6)

Place	Name	Age	Profession	Place of birth
Fisher House	John W Crompton	46	Landowner	Lancashire, Liverpool
	Margaret E Crompton	36		Lancashire, Liverpool
	Elizabeth J Morris	18	Domestic servant	Lancashire, Horwich
	Mary Linton	44	Domestic servant	Cumberland, ???

1891 Census (RG12/Piece 3422/Folio 9/Page 2)

Place	Name	Age	Profession	Place of birth
Fisher House	Ann Gerrard	49	Farmer	Lancashire, Heath Charnock
	Sarah Ann Gerrard	27		Lancashire, Chorley
	Alfred Gerrard	21	Farm labourer agricultural	Lancashire, Bolton
	Frederic Gerrard	19	Clerk in silk warehouse	Lancashire, Bolton

Place	Name	Age	Profession	Place of birth
	Bessie Gerrard	11		Lancashire, Rivington
	Hugh Yates	74	Labourer	Lancashire, Rivington

1901 Census (RG13/Piece 3933/Folio 11/Page 3)

Place	Name	Age	Profession	Place of birth
Fisher House	Thomas Jones	45	Road lab[ourer]; highway foreman	Lancashire, Wheelton
	Mary Jones	45		Lancashire, Wheelton
	Margaret Jones	22	Cotton weaving	Lancashire, Heath Charnock
	James Jones	19	Stone flag quarryman	Lancashire, Rivington
	Thomas Jones	14	Cotton bobbin hand	Lancashire, Rivington
	Samuel Jones	14		Lancashire, Rivington
	William Jones	8		Lancashire, Rivington

1911 Census (Registration District Number 475/Enumeration District 07/Piece 25199)

Place	Name	Age	Profession	Place of birth
Fisher House	Hannah Patrick	63	None. Private means	Lancashire, Horwich
	Emma Whitworth	38	General. Domestic servant	Isle of Man, Port St Mary

Appendix 3: Photograph Record Index

Project name:		Fisher House, Rivington Lane, Rivington, Lancashire: Archaeological Building Recording			Film type:	Digital
Project Code:		G1539	Site Code:	FH22	Film No.:	1
Shot No.	Area	From	Description	Scale size	Initial/date	
1	Exterior	N	North-east external elevation	2m	DWE 22/11/2022	
2	Exterior	N	North-east external elevation: south-east end	2m	DWE 22/11/2022	
3	Exterior	NW	North-west external elevation: north-east side	2m	DWE 22/11/2022	
4	Exterior	NE	North-east external elevation: centre	2m	DWE 22/11/2022	
5	Exterior	NE	North-east external elevation: south-east side	2m	DWE 22/11/2022	
6	Exterior	NE	North-east external elevation: centre	2m	DWE 22/11/2022	
7	Exterior	NE	North-east external elevation: north-west window	2m	DWE 22/11/2022	
8	Exterior	NE	North-east external elevation: windows	2m	DWE 22/11/2022	
9	Exterior	NE	North-east external elevation: south-east windows	2m	DWE 22/11/2022	
10	Exterior	E	North-east external elevation: north-west side	2m	DWE 22/11/2022	
11	Exterior	NE	North-east external elevation: north-west side	2m	DWE 22/11/2022	
12	Exterior	N	North-west external elevation	2m	DWE 22/11/2022	
13	Exterior	NW	North-west external elevation	2m	DWE 22/11/2022	
14	Exterior	NW	North-west external elevation: door	2m	DWE 22/11/2022	
15	Exterior	NW	North-west external elevation: door fitting	-	DWE 22/11/2022	
16	Exterior	NW	North-west external elevation: door fitting	-	DWE 22/11/2022	
17	Exterior	W	North-west external elevation: wall and south-west	2m	DWE 22/11/2022	
18	Exterior	S	South-west external elevation	2m	DWE 22/11/2022	
19	Exterior	S	South-west external elevation: north-west side	2m	DWE 22/11/2022	
20	Exterior	SW	South-west external elevation: north-west side window	2m	DWE 22/11/2022	
21	Exterior	SW	South-west external elevation: centre	2m	DWE 22/11/2022	
22	Exterior	SW	South-west external elevation: centre	2m	DWE 22/11/2022	
23	Exterior	SW	South-west external elevation: north-west side	2m	DWE 22/11/2022	
24	Exterior	SW	South-west external elevation: centre	2m	DWE 22/11/2022	
25	Exterior	SW	South-west external elevation: central door	2m	DWE 22/11/2022	
26	Exterior	W	South-west external elevation: boot scraper	0.2m	DWE 22/11/2022	
27	Exterior	SW	South-west external elevation: south-east end	2m	DWE 22/11/2022	
28	Exterior	SW	South-west external elevation: façade wall	2m	DWE 22/11/2022	

Project name:		Fisher House, Rivington Lane, Rivington, Lancashire: Archaeological Building Recording			Film type:	Digital
Project Code:		G1539	Site Code:	FH22	Film No.:	1
Shot No.	Area	From	Description	Scale size	Initial/date	
29	Exterior	W	South-west external elevation: façade wall	2m	DWE 22/11/2022	
30	Exterior	NW	South-west external elevation: façade wall, gate	2m	DWE 22/11/2022	
31	Exterior	SE	South-east external elevation: main	2m	DWE 22/11/2022	
32	Exterior	SW	South-west external elevation: south-east side	2m	DWE 22/11/2022	
33	Exterior	S	South-west external elevation: south-east side	2m	DWE 22/11/2022	
34	Exterior	S	South-east external elevation	2m	DWE 22/11/2022	
35	Exterior	SE	South-east external elevation: conservatory	2m	DWE 22/11/2022	
36	Exterior	S	South-east external elevation: north-east side	2m	DWE 22/11/2022	
37	Interior	W	Room G1: hanging drier	-	DWE 22/11/2022	
38	Interior	W	Room G1: north-east elevation	2m	DWE 22/11/2022	
39	Interior	SW	Room G1: north-east elevation, north-west door	2m	DWE 22/11/2022	
40	Interior	SW	Room G1: north-east elevation, south-east door	2m	DWE 22/11/2022	
41	Interior	NW	Room G1: south-east elevation	2m	DWE 22/11/2022	
42	Interior	E	Room G1: south-west elevation	2m	DWE 22/11/2022	
43	Interior	NE	Room G1: south-west elevation door	2m	DWE 22/11/2022	
44	Interior	SE	Room G1: north-west elevation	2m	DWE 22/11/2022	
45	Interior	S	Room G1: toilet sink	2m	DWE 22/11/2022	
46	Interior	NW	Room G1: toilet	2m	DWE 22/11/2022	
47	Interior	S	Room G1: cupboard	2m	DWE 22/11/2022	
48	Interior	S	Room G1: vent	-	DWE 22/11/2022	
49	Interior	SW	Room G1: shelves	2m	DWE 22/11/2022	
50	Interior	NW	Room G1: window to south-east	0.2m	DWE 22/11/2022	
51	Interior	W	Room G2	2m	DWE 22/11/2022	
52	Interior	E	Room G2:	2m	DWE 22/11/2022	
53	Interior	SE	Room G2: door to north-west	2m	DWE 22/11/2022	
54	Interior	SW	Room G2: door to north-east	2m	DWE 22/11/2022	
55	Interior	W	Room G3: meat hooks	-	DWE 22/11/2022	
56	Interior	W	Room G3: beams	-	DWE 22/11/2022	
57	Interior	SW	Room G3: north-east elevation	2m	DWE 22/11/2022	
58	Interior	SW	Room G3: north-east elevation door	2m	DWE 22/11/2022	
59	Interior	SE	Room G3: north-east elevation door	2m	DWE 22/11/2022	
60	Interior	NW	Room G3: south-east elevation door	2m	DWE 22/11/2022	
61	Interior	NW	Room G3: south-east elevation	2m	DWE 22/11/2022	
62	Interior	E	Room G3: south-west elevation	2m	DWE 22/11/2022	
63	Interior	SE	Room G3: north-west elevation door	2m	DWE 22/11/2022	
64	Interior	W	Room G4: north-east elevation	2m	DWE 22/11/2022	
65	Interior	NW	Room G4: south-east elevation	2m	DWE 22/11/2022	
66	Interior	NW	Room G4: south-east elevation, alcove	2m	DWE 22/11/2022	
67	Interior	NW	Room G4: south-east elevation, alcove	2m	DWE 22/11/2022	

Project name:		Fisher House, Rivington Lane, Rivington, Lancashire: Archaeological Building Recording			Film type:	Digital
Project Code:		G1539	Site Code:	FH22	Film No.:	1
Shot No.	Area	From	Description	Scale size	Initial/date	
68	Interior	NW	Room G4: south-east elevation, fireplace	2m	DWE 22/11/2022	
69	Interior	E	Room G4: south-west window	2m	DWE 22/11/2022	
70	Interior	SE	Room G4: north-west door	2m	DWE 22/11/2022	
71	Interior	SW	Room G5	2m	DWE 22/11/2022	
72	Interior	S	Room G5: arch	-	DWE 22/11/2022	
73	Interior	W	Room G5: stairs	1m	DWE 22/11/2022	
74	Interior	SW	Room G5: door to north-east	1m	DWE 22/11/2022	
75	Interior	N	Room G5: south-east elevation	2m	DWE 22/11/2022	
76	Interior	SE	Room G5: doors to north-west	2m	DWE 22/11/2022	
77	Interior	NE	Room G5: doors to south-west	2m	DWE 22/11/2022	
78	Interior	SE	Room G5: arch detail	2m	DWE 22/11/2022	
79	Interior	E	Room G6	-	DWE 22/11/2022	
80	Interior	W	Room G6	2m	DWE 22/11/2022	
81	Interior	E	Room G6: cornice	2m	DWE 22/11/2022	
82	Interior	E	Room G6: ceiling rose	-	DWE 22/11/2022	
83	Interior	NW	Room G6: door to south-east	-	DWE 22/11/2022	
84	Interior	NE	Room G6: window to south-west	2m	DWE 22/11/2022	
85	Interior	SE	Room G6: window panel	2m	DWE 22/11/2022	
86	Interior	SE	Room G6: fireplace to north-west	2m	DWE 22/11/2022	
87	Interior	S	Room G7: window to north-east	2m	DWE 22/11/2022	
88	Interior	NE	Room G7: door to south-west	2m	DWE 22/11/2022	
89	Interior	E	Room G7: shelves to south-west	2m	DWE 22/11/2022	
90	Interior	N	Room G7: shelves to south-west	2m	DWE 22/11/2022	
91	Interior	SE	Room G7: door to north-west	2m	DWE 22/11/2022	
92	Interior	SE	Room G7: bracket to north-west	0.2m	DWE 22/11/2022	
93	Interior	N	Cellar	2m	DWE 22/11/2022	
94	Interior	NW	Cellar: north-east ceiling	-	DWE 22/11/2022	
95	Interior	NE	Cellar: south-east ceiling	-	DWE 22/11/2022	
96	Interior	SE	Cellar: south-west ceiling	-	DWE 22/11/2022	
97	Interior	S	Cellar	2m	DWE 22/11/2022	
98	Interior	NW	Cellar: stairs	2m	DWE 22/11/2022	
99	Interior	SW	Cellar: alcove to north-east	2m	DWE 22/11/2022	
100	Interior	SW	Cellar: arch to north-east	1.5m	DWE 22/11/2022	
101	Interior	NW	Cellar: south-east elevation, north-east side	1.5m	DWE 22/11/2022	
102	Interior	W	Cellar: south-east elevation, south-west side	1.5m	DWE 22/11/2022	
103	Interior	E	Cellar: south-west elevation	1.5m	DWE 22/11/2022	
104	Interior	SE	Cellar: window to north-west	1.5m	DWE 22/11/2022	
105	Interior	S	Cellar: north-west elevation centre	1.5m	DWE 22/11/2022	
106	Interior	E	Cellar: north-west elevation centre	1.5m	DWE 22/11/2022	
107	Interior	S	Room G8: window to north-east	1.5m	DWE 22/11/2022	
108	Interior	SW	Room G8: north-east elevation	1.5m	DWE 22/11/2022	
109	Interior	SW	Room G8: window to north-east	1.5m	DWE 22/11/2022	
110	Interior	W	Room G8: door to north-east	1.5m	DWE 22/11/2022	
111	Interior	NE	Room G8: stairs	1.5m	DWE 22/11/2022	
112	Interior	N	Room G8: blocked door to south-east	1.5m	DWE 22/11/2022	

Project name:		Fisher House, Rivington Lane, Rivington, Lancashire: Archaeological Building Recording			Film type:	Digital
Project Code:		G1539	Site Code:	FH22	Film No.:	1
Shot No.	Area	From	Description	Scale size	Initial/date	
113	Interior	NW	Room G8: stairwell to south-east	1.5m	DWE 22/11/2022	
114	Interior	NE	Room G8: south-west elevation	1.5m	DWE 22/11/2022	
115	Interior	E	Room G8: ceiling	-	DWE 22/11/2022	
116	Interior	NE	Room G8: back to south-west	1.5m	DWE 22/11/2022	
117	Interior	NE	Room G8: door to south-west	1.5m	DWE 22/11/2022	
118	Interior	SE	Room G8: door to north-west	1.5m	DWE 22/11/2022	
119	Interior	S	Room G8: column to north-west	1.5m	DWE 22/11/2022	
120	Interior	E	Room G9: ceiling	-	DWE 22/11/2022	
121	Interior	S	Room G9: cupboard, north-east elevation	1.5m	DWE 22/11/2022	
122	Interior	SW	Room G9: north-east elevation	1.5m	DWE 22/11/2022	
123	Interior	NW	Room G9: south-east elevation	1.5m	DWE 22/11/2022	
124	Interior	E	Room G9: south-west elevation	1.5m	DWE 22/11/2022	
125	Interior	N	Room G9: south-west elevation	1.5m	DWE 22/11/2022	
126	Interior	E	Room G9: south-west elevation	1.5m	DWE 22/11/2022	
127	Interior	SE	Room G9: north-west elevation	1.5m	DWE 22/11/2022	
128	Interior	S	Room F7: north-east and north-west elevations	1.5m	DWE 22/11/2022	
129	Interior	S	Room F7: north-east and north-west elevations	1.5m	DWE 22/11/2022	
130	Interior	SE	Room F7: trusses	-	DWE 22/11/2022	
131	Interior	NW	Room F7: stairs to south-east	1.5m	DWE 22/11/2022	
132	Interior	NW	Room F7: blocked door	1.5m	DWE 22/11/2022	
133	Interior	NW	Room F7: south-east elevation	1.5m	DWE 22/11/2022	
134	Interior	NE	Room F7: south-west elevation	1.5m	DWE 22/11/2022	
135	Interior	NE	Room F7: south-west elevation	1.5m	DWE 22/11/2022	
136	Interior	SW	Room F1: north-east side	1.5m	DWE 22/11/2022	
137	Interior	NW	Room F1: south-east side	1.5m	DWE 22/11/2022	
138	Interior	N	Room F1: south-west side	1.5m	DWE 22/11/2022	
139	Interior	N	Room F1: fireplace	1.5m	DWE 22/11/2022	
140	Interior	E	Room F1: door to west	1.5m	DWE 22/11/2022	
141	Interior	E	Room F2	1.5m	DWE 22/11/2022	
142A	Interior	SW	Room F2: north-east elevation	1.5m	DWE 22/11/2022	
142B	Interior	SW	Room F2: side of fire	1.5m	DWE 22/11/2022	
143	Interior	NW	Room F2: fireplace	1.5m	DWE 22/11/2022	
144	Interior	NW	Room F3: south-east end	1.5m	DWE 22/11/2022	
145	Interior	NW	Room F3: south-east end	1.5m	DWE 22/11/2022	
146	Interior	E	Room F3: south-west side	1.5m	DWE 22/11/2022	
147	Interior	SE	Room F3: north-west side	1.5m	DWE 22/11/2022	
148	Interior	SW	Room F4: stairs	1.5m	DWE 22/11/2022	
149	Interior	SW	Room F4: north-east end	1.5m	DWE 22/11/2022	
150	Interior	NE	Room F4: south-west end	1.5m	DWE 22/11/2022	
151	Interior	E	Room F4: scar to north-west	1.5m	DWE 22/11/2022	
152	Interior	W	Room F5	1.5m	DWE 22/11/2022	
153	Interior	E	Room F5	1.5m	DWE 22/11/2022	
154	Interior	E	Room F5: window to south-west	1.5m	DWE 22/11/2022	
155	Interior	S	Room F5: cupboard in fire	1.5m	DWE 22/11/2022	
156	Interior	S	Room F5: cupboard in fire	1.5m	DWE 22/11/2022	

Project name:		Fisher House, Rivington Lane, Rivington, Lancashire: Archaeological Building Recording			Film type:	Digital
Project Code:		G1539	Site Code:	FH22	Film No.:	1
Shot No.	Area	From	Description	Scale size	Initial/date	
157	Interior	SE	Room F5: fireplace	1.5m	DWE 22/11/2022	
158	Interior	NW	Room F5: door to south-east	1.5m	DWE 22/11/2022	
159	Interior	SW	Room F6: window to north-east	1.5m	DWE 22/11/2022	
160	Interior	SE	Room F6: north-west elevation	1.5m	DWE 22/11/2022	
161	Interior	NW	Room F6: south-east elevation	1.5m	DWE 22/11/2022	
162	Interior	SW	Room S1: window	1.5m	DWE 22/11/2022	
163	Interior	N	Room S1: flues	1.5m	DWE 22/11/2022	
164	Interior	E	Room S1: north-west elevation	1.5m	DWE 22/11/2022	
165A	Interior	NW	Room S2: fireplace	1.5m	DWE 22/11/2022	
165B	Interior	NW	Room S2: fireplace	1.5m	DWE 22/11/2022	
166	Interior	NE	Room S2: window	1.5m	DWE 22/11/2022	
167	Interior	SE	Room S2: doors	1.5m	DWE 22/11/2022	
168	Interior	SW	Room S3: stairs	1.5m	DWE 22/11/2022	
169	Interior	NE	Room S3:	1.5m	DWE 22/11/2022	
170	Interior	SW	Room S3:	1.5m	DWE 22/11/2022	
171	Interior	E	Room S4	1.5m	DWE 22/11/2022	
172	Interior	NE	Room S4: window	1.5m	DWE 22/11/2022	
173	Interior	SE	Room S4: fireplace	1.5m	DWE 22/11/2022	
174	Interior	W	Room S4: door, etc.	1.5m	DWE 22/11/2022	
175	Interior	SW	Room S5: window	1.5m	DWE 22/11/2022	
176	Interior	E	Room S5: cupboard	1.5m	DWE 22/11/2022	
177	Interior	NW	Room S5: door to south-east	1.5m	DWE 22/11/2022	
178	Interior	NE	Attic roof	-	DWE 22/11/2022	
179	Interior	N	Attic: dividing wall	-	DWE 22/11/2022	

BASEMENT PLAN




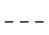

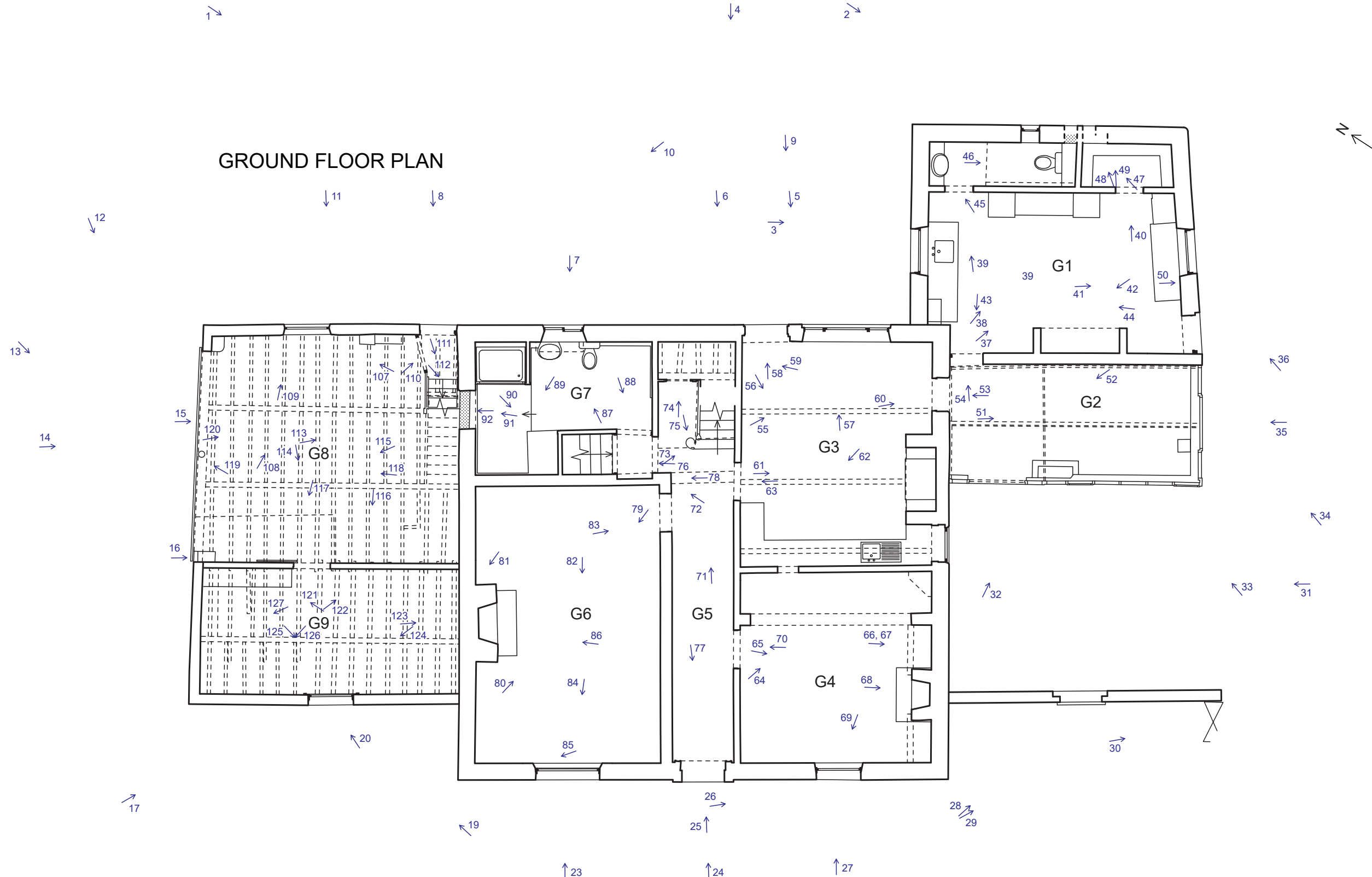
Key:  cross-sectional timber  overhead features  photo I.D. number and direction

Figure 10: Basement plan, showing the location and direction of photographs taken

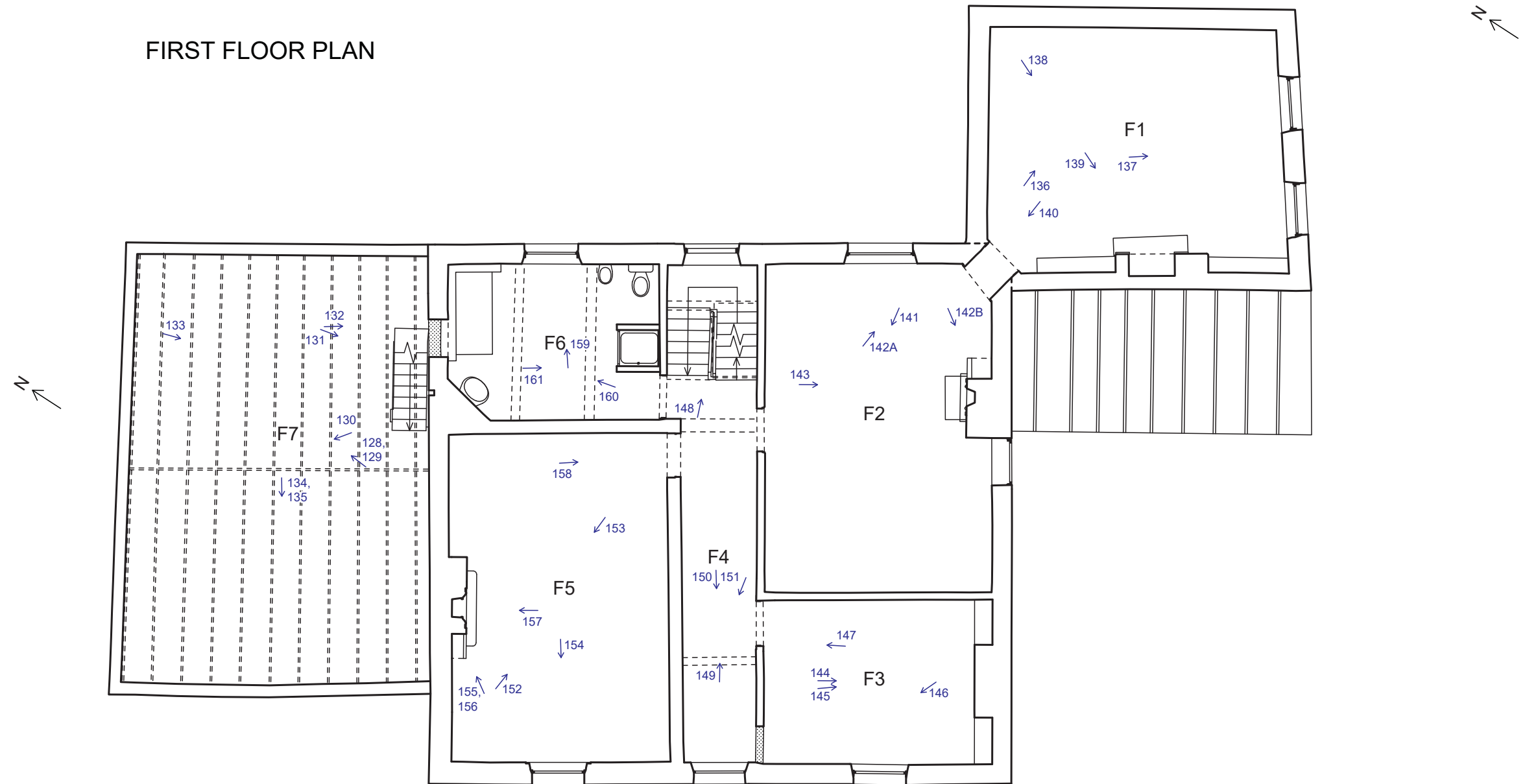
GROUND FLOOR PLAN



Key: blocked feature G2 room number cross-sectional timber - - - overhead features photo I.D. number and direction

Figure 11: Ground floor plan, showing the location and direction of photographs taken

FIRST FLOOR PLAN

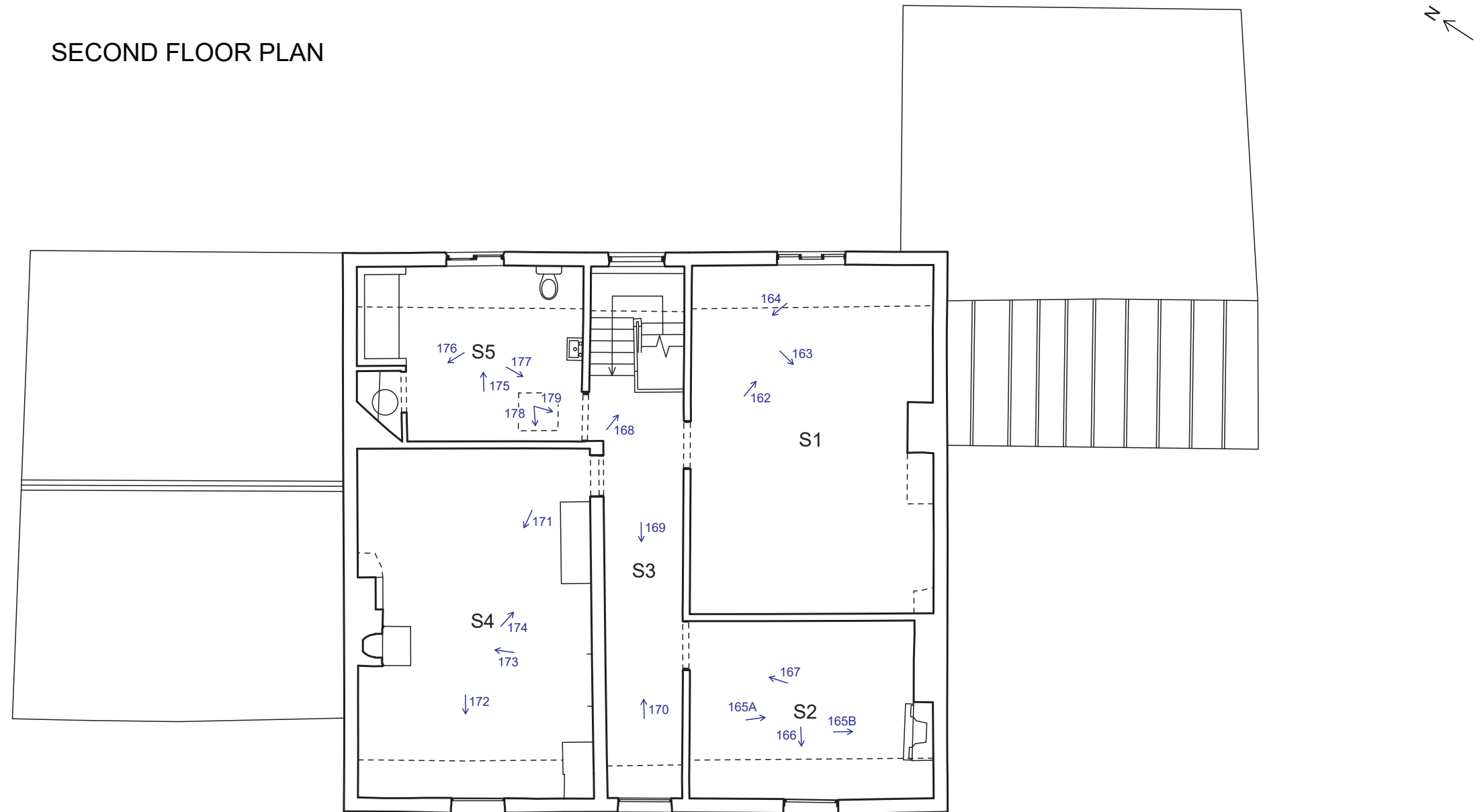


Key: blocked feature F2 room number cross-sectional timber - - - overhead features photo I.D. number and direction



Figure 12: First floor plan, showing the location and direction of photographs taken

SECOND FLOOR PLAN



Key: S2 room number ■ cross-sectional timber --- overhead features \rightarrow 167 photo I.D. number and direction

Figure 13: Second floor plan, showing the location and direction of photographs taken

Appendix 4: Archive Index

Project name:	Fisher House, Rivington Lane, Rivington, Lancashire: Archaeological Building Recording		
Project Code:	G1539	Site Code:	FH22
Description	Material	Size	Quantity
Report	Paper, comb-bound	A4 and A3	44 sheets printed double-sided
Building investigation fabric record sheet	Paper	A4	1 sheet, double-sided
Building investigation elevation record sheet	Paper	A4	5 sheets, double-sided
Building investigation room description record sheet	Paper	A4	16 sheets, double-sided
Photo record sheet	Paper	A4	2 sheets, double-sided
Drawing index	Paper	A4	1 sheet, single-sided
Annotated drawings	Paper	A4/A3	7 sheets, single-sided
Drawings	Draughting film	A3	1 sheet, single side
Digital archive index	Paper	A4	1 sheet, single-sided
Digital archive	DVD	-	1