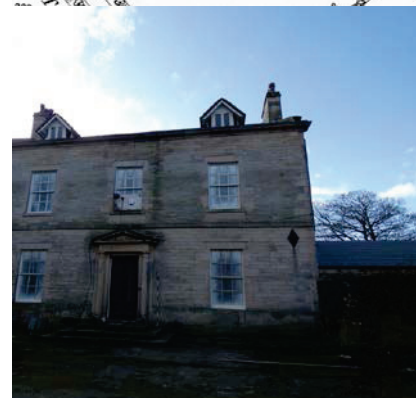
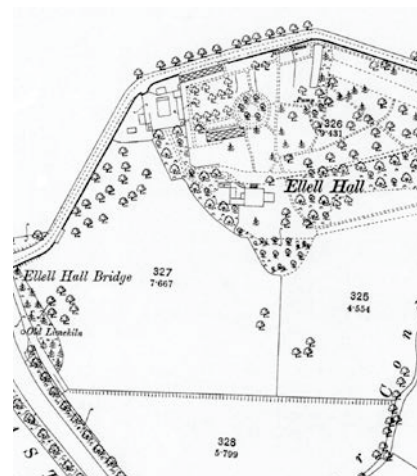


# ELLEL HALL, GALGATE, LANCASTER, LANCASHIRE

## Archaeological Building Recording



Client: Mr and Mrs Smith

Planning ref: 1/2019/00413/FUL  
LB Consent ref: 1/2019/00414/LB

NGR 347969 455435

© Greenlane Archaeology Ltd

February 2020



<b>The Site</b>	
Site Name	Ellel Hall, Galgate, Lancaster
County	Lancashire
NGR	347969 455435
Listing Status, Level, and number	Listed Grade II No. 1362484
Brief description of building/buildings to be recorded	Hall

<b>Client</b>	
Client Name	Mr and Mrs Smith
Client's architect	Mason Gillibrand
'As existing' drawings available?	Yes

<b>Planning</b>	
Pre-planning?	No
Planning Application No.	1/2019/00413/FUL and 1/2019/00414/LB
Plans (e.g. conversion, extension, demolition)	Alterations to building
Condition number	4 (on 1/2019/00414/LB)
Local Planning Authority	Lancaster City Council
Planning Archaeologist	Lancashire County Council Historic Environment Team
Level of Building Recording required	Photographic elements of level 2/3

<b>Archiving</b>	
Relevant Record Office(s)/Archive Centre(s)	Lancashire Record Office (Preston)
Relevant HER	Lancashire

<b>Staffing</b>	
Desk-based assessment	Dan Elsworth
Building recording	Dan Elsworth Tom Mace
Report writing	Dan Elsworth
Report editing	Jo Dawson
Illustrations	Tom Mace
Date on site work carried out	17 <sup>th</sup> February 2020

Greenlane Archaeology Ltd,  
Lower Brook Street, Ulverston, Cumbria, LA12 7EE

Tel: 01229 588 500  
Email: [info@greenlancearchaeology.co.uk](mailto:info@greenlancearchaeology.co.uk)  
Web: [www.greenlancearchaeology.co.uk](http://www.greenlancearchaeology.co.uk)

## Contents

Illustrations .....	2
List of Figures .....	2
List of Plates .....	2
Non-Technical Summary .....	7
Acknowledgements .....	7
1. Introduction .....	8
1.1 Circumstances of the Project .....	8
1.2 Location, Geology, and Topography .....	8
2. Methodology .....	10
2.1 Introduction .....	10
2.2 Desk-Based Assessment .....	10
2.3 Building Recording .....	10
2.4 Archive .....	10
3. Desk-Based Assessment .....	11
3.1 Map Regression .....	11
3.2 Site History .....	14
4. Building Recording .....	17
4.1 Arrangement and Fabric .....	17
4.2 External Detail .....	17
4.3 Internal Detail .....	31
5. Discussion .....	71
5.1 Introduction .....	71
5.2 Phasing .....	71
5.3 Significance .....	72
6. Bibliography .....	73
6.1 Primary and Cartographic Sources .....	73
6.2 Secondary Sources .....	73
Appendix 1: Listed Building Details .....	75
Appendix 2: Census information 1841-1901 .....	76
Appendix 3: Photographic Register .....	78
Appendix 4: Archive Index .....	82

## Illustrations

### List of Figures

Figure 1: Site location .....	9
Figure 2: Lower Ground Floor plan .....	25
Figure 3: Ground Floor plan .....	26
Figure 4: First Floor plan .....	27

### List of Plates

Plate 1 (left): Extract from Yates' map of 1786 .....	11
Plate 2 (right): Extract from Hennet's map of 1830 .....	11
Plate 3 (left): Extract from the tithe map of 1846 .....	12
Plate 4 (right): Extract from the Ordnance Survey map of 1848 .....	12
Plate 5 (left): Extract from the Ordnance Survey map of 1891 .....	12
Plate 6 (right): Extract from the Ordnance Survey map of 1895 .....	12
Plate 7 (left): Extract from the Ordnance Survey map of 1898 .....	13
Plate 8 (right): Extract from the Ordnance Survey map of 1912 .....	13
Plate 9 (left): Extract from the Ordnance Survey map of 1919 .....	14
Plate 10 (right): Extract from the plan with the sales particulars of 1931 (after Proctor and Birkbeck 1931) .....	14
Plate 11: Photograph of Ellel Hall in 1931 (after Proctor and Birkbeck 1931) .....	14
Plate 12: The north external elevation, viewed from the north .....	17
Plate 13 (left): The central and north-west end of the north external elevation, viewed from the north .....	18
Plate 14 (right): Tie rod plate east of the main entrance in the north external elevation, viewed from the north .....	18
Plate 15: The east end of the north external elevation, viewed from the north-east .....	18
Plate 16 (left): East external elevation, viewed from the east .....	19
Plate 17 (right): South-east corner of the east wing showing concrete foundations, viewed from the south-east .....	19
Plate 18: General view of the south external elevation, viewed from the south-east .....	20
Plate 19 (left): The east end of the south external elevation, viewed from the south .....	20
Plate 20 (right): The junction of the east wing with the south elevation, viewed from south-east .....	20
Plate 21: General view of the central part of the south external elevation, viewed from the south .....	21
Plate 22 (left): Blocked windows on the east side of the central part of the south external elevation, viewed from the south .....	21
Plate 23 (right): The concrete balustraded staircase attached to the centre of the south external elevation, viewed from the south-west .....	21
Plate 24 (left): The west end of the south external elevation, viewed from the south-east .....	22
Plate 25 (right): General view of the west end of the south external elevation, viewed from the south-west .....	22
Plate 26 (left): The west external elevation, viewed from the west .....	22
Plate 27 (right): The west wing where it joins the main west external elevation, viewed from the north-west .....	22
Plate 28 (left): Detail of lower ground floor level doorway and raised walkway in west external elevation, viewed from the west .....	23
Plate 29 (right): Vaulted store below retaining wall running from the west external elevation, viewed from the south .....	23



Plate 30 (left): The north elevation, lower ground floor Room 1, viewed from the south-east .....	31
Plate 31 (right): The west elevation, lower ground floor Room 1, viewed from the east .....	31
Plate 32 (left): Doorway in the south elevation, lower ground floor Room 1, viewed from the north .....	31
Plate 33 (right): Iron I-beams in the ceiling of lower ground floor Room 1, viewed from the south-east.....	31
Plate 34 (left): The north-west elevation, Room 2, viewed from the south-east.....	32
Plate 35 (right): The south-east elevation, Room 2, viewed from the north-west .....	32
Plate 36 (left): Blocked opening in the east elevation, lower ground floor Room 2, viewed from the west.....	32
Plate 37 (right): The south elevation, lower ground floor Room 3, viewed from the north .....	32
Plate 38 (left): General view of lower ground floor Room 3, from the north-east .....	33
Plate 39 (right): General view of lower ground floor Room 3, from the south-west.....	33
Plate 40: West elevation showing blocked opening, lower ground floor Room 3, viewed from the east .....	33
Plate 41 (left): North elevation, lower ground floor Room 4, viewed from the south .....	34
Plate 42 (right): East elevation, lower ground floor Room 4, viewed from the west.....	34
Plate 43 (left): South elevation, lower ground floor Room 4, viewed from the north .....	34
Plate 44 (right): West elevation showing tie rod and meat hooks, lower ground floor Room 4, viewed from the north-east .....	34
Plate 45: Doorways in the south and west elevations of lower ground floor Room 5, viewed from the north-east ...	35
Plate 46: Lower ground floor Rooms 6 and 7, viewed from the south.....	35
Plate 47 (left): West elevation, lower ground floor Room 8, viewed from the east.....	36
Plate 48 (right): Moulded beam, lower ground floor Room 8, viewed from the south-east .....	36
Plate 49 (left): Doorway on the south side of the east elevation, lower ground floor Room 8, viewed from the west	36
Plate 50 (right): Doorway on the north side of the east elevation, lower ground floor Room 8, viewed from the south-west.....	36
Plate 51 (left): Window in the south elevation, lower ground floor Room 8, viewed from the north .....	37
Plate 52 (right): Stairs on the north side of lower ground floor Room 8, viewed from the south .....	37
Plate 53 (left): The east end of lower ground floor Room 9, viewed from the west.....	37
Plate 54 (right): The west end of lower ground floor Room 9, viewed from the east .....	37
Plate 55: Garage door in the north elevation of lower ground floor Room 9, viewed from the south-east.....	38
Plate 56: Stairs at the west end of lower ground floor Room 10, viewed from the south .....	38
Plate 57 (left): Safe doors, lower ground floor Room 11, viewed from the east.....	39
Plate 58 (right): Detail of makers plate 'MILNERS [...] FIRE RESISTING [...] LIVERPOOL AND LONDON' on the safe doors, lower ground floor Room 11, viewed from the east .....	39
Plate 59 (left): The north elevation of ground floor Room 1, viewed from the south .....	40
Plate 60 (right): The east elevation of ground floor Room 1, viewed from the south-west.....	40
Plate 61 (left): The south end of ground floor Room 1, viewed from the north-east .....	40
Plate 62 (right): The staircase at the south end of ground floor Room 1, viewed from the north-east.....	40
Plate 63 (left): Cornice and arch detail in ground floor Room 1, viewed from the north-east .....	41
Plate 64 (right): Modern ceiling rose in ground floor Room 1, viewed from the north-east.....	41
Plate 65 (left): Doorway in the north elevation in ground floor Room 2, viewed from the south-east .....	41
Plate 66 (right): Doorway in the west elevation in ground floor Room 2, viewed from the east.....	41
Plate 67 (left): Arch in ground floor Room 2, viewed from the west .....	42

Plate 68 (right): Lancet window at the east end of ground floor Room 2, viewed from the south-west .....	42
Plate 69 (left): The north elevation in ground floor Room 3, viewed from the south .....	42
Plate 70 (right): The east elevation in ground floor Room 3, viewed from the west.....	42
Plate 71: The south elevation in ground floor Room 3, viewed from the north .....	43
Plate 72 (left): Window in the north elevation of ground floor Room 4, viewed from the south-west.....	43
Plate 73 (right): General view of ground floor Room 4, viewed from the north-west.....	43
Plate 74 (left): Lancet window in the south-west corner of ground floor Room 5, viewed from the north-east.....	44
Plate 75 (right): Window in the east elevation of ground floor Room 5, viewed from the west .....	44
Plate 76 (left): Fireplace in the north elevation of ground floor Room 6, viewed from the south .....	44
Plate 77 (right): Window in the south elevation of ground floor Room 6, viewed from the north .....	44
Plate 78 (left): The west elevation in ground floor Room 6, viewed from the east .....	45
Plate 79 (right): The missing modern ceiling rose in ground floor Room 6, viewed from the north-west.....	45
Plate 80: Cornice detail in ground floor Room 6, viewed from the north-east.....	45
Plate 81 (left): The north elevation in ground floor Room 7, viewed from the south .....	46
Plate 82 (right): The east elevation in ground floor Room 7, viewed from the west.....	46
Plate 83 (left): The fireplace in the east elevation of ground floor Room 7, viewed from the west .....	46
Plate 84 (right): The south elevation in ground floor Room 7, viewed from the north .....	46
Plate 85 (left): The north elevation in ground floor Room 8, viewed from the south .....	47
Plate 86 (right): The south elevation in ground floor Room 8, viewed from the north .....	47
Plate 87: The west elevation in ground floor Room 8, viewed from the east .....	47
Plate 88 (left): The west elevation in ground floor Room 9, viewed from the east .....	48
Plate 89 (right): The south elevation in ground floor Room 9, viewed from the north .....	48
Plate 90 (left): The east elevation in ground floor Room 9, viewed from the west .....	48
Plate 91 (right): Cornice detail in ground floor Room 9, viewed from the south-east.....	48
Plate 92 (left): The north elevation in ground floor Room 10, viewed from the south .....	49
Plate 93 (right): The east elevation in ground floor Room 10, viewed from the west.....	49
Plate 94 (left): The south elevation in ground floor Room 10, viewed from the north .....	49
Plate 95 (right): The west elevation in ground floor Room 10, viewed from the east.....	49
Plate 96 (left): The ceiling in ground floor Room 10, viewed from the east.....	50
Plate 97 (right): The tiled floor in ground floor Room 10, viewed from the west .....	50
Plate 98 (left): Stairs in ground floor Room 11, viewed from the south-east.....	50
Plate 99 (right): Window in the north elevation of Room 11, viewed from the south-east.....	50
Plate 100: General view of ground floor Room 12, viewed from the north-east.....	51
Plate 101: General view of ground floor Room 13, viewed from the north.....	51
Plate 102 (left): Stairs in ground floor Room 14, viewed from the east .....	52
Plate 103 (right): Door to the exterior, west end of ground floor Room 14, viewed from the east .....	52
Plate 104 (left): The north elevation of ground floor Room 15, viewed from the south .....	52
Plate 105 (right): The east elevation of ground floor Room 15, viewed from the west.....	52
Plate 106 (left): The west elevation of ground Room 15, viewed from the east.....	53
Plate 107 (right): Detail of the fireplace in the west elevation of ground floor Room 15, viewed from the east.....	53

Plate 108 (left): Cornice detail in ground floor Room 15, viewed from the south-east.....	53
Plate 109 (right): Modern ceiling rose in ground floor Room 15, viewed from the south-east.....	53
Plate 110 (left): The north elevation in first floor Room 1, viewed from the south.....	54
Plate 111 (right): The west elevation in first floor Room 1, viewed from the east.....	54
Plate 112 (left): The fireplace in the west elevation of first floor Room 1, viewed from the east.....	54
Plate 113 (right): Cornice detail in first floor Room 1, viewed from the north-east.....	54
Plate 114: Window seat in the north elevation of first floor Room 2, viewed from the south.....	55
Plate 115 (left): Window in the north elevation of first floor Room 4, viewed from the south.....	55
Plate 116 (right): The east elevation in first floor Room 4, viewed from the west.....	55
Plate 117 (left): Blocked western doorway in the north elevation of first floor Room 6, viewed from the south.....	56
Plate 118 (right): Blocked eastern doorway in the north elevation of first floor Room 6, viewed from the south.....	56
Plate 119 (left): Panelled doorway mid-way along first floor Room 6, viewed from the south-west.....	56
Plate 120 (right): Ceiling lantern in first floor Room 6, viewed from the north.....	56
Plate 121: Modern shower on the east side of first floor Room 7, viewed from the west.....	57
Plate 122 (left): General view of first floor Room 8, from the south-west.....	57
Plate 123 (right): General view of first floor Room 8, from the south-east.....	57
Plate 124: Cornice detail in first floor Room 8, viewed from the north-west.....	58
Plate 125: General view of first floor Room 9, from the east.....	58
Plate 126 (left): General view of first floor Room 10, from the north-west.....	59
Plate 127 (right): General view of first floor Room 10, from the south-east.....	59
Plate 128 (left): The east elevation in first floor Room 11, viewed from the west.....	59
Plate 129 (right): Stairs in first floor Room 11, viewed from the north-west.....	59
Plate 130 (left): Landing on the south side of first floor Room 11, viewed from the north.....	60
Plate 131 (right): Doorway to the west of first floor Room 11, viewed from the east.....	60
Plate 132: Original ceiling rose in first floor Room 11, viewed from the north-east.....	60
Plate 133 (left): Doorway in the north elevation of first floor Room 12, viewed from the south.....	61
Plate 134 (right): Window in the south elevation of first floor Room 12, viewed from the north.....	61
Plate 135 (left): The west elevation in first floor Room 12, viewed from the east.....	61
Plate 136 (right): Fireplace in the west elevation of first floor Room 12, viewed from the east.....	61
Plate 137 (left): Stairs against the north side of first floor Room 13, viewed from the east.....	62
Plate 138 (right): Brickwork forming the south elevation of first floor Room 13, viewed from the north.....	62
Plate 139: Stair window in the west elevation of first floor Room 13, viewed from the east.....	62
Plate 140 (left): The north elevation of second floor Room 1, viewed from the south-east.....	63
Plate 141 (right): Fireplace in the west elevation of second floor Room 1, viewed from east.....	63
Plate 142: The south elevation in second floor Room 1, viewed from the north.....	63
Plate 143 (left): The north elevation in second floor Room 2, viewed from the south-east.....	64
Plate 144 (right): The east elevation in second floor Room 2, viewed from the west.....	64
Plate 145: The south elevation in second floor Room 2, viewed from the north.....	64
Plate 146 (left): The north elevation of second floor Room 3, viewed from the south-east.....	65
Plate 147 (right): The east elevation of second floor Room 3, viewed from the west.....	65

Plate 148 (left): Fireplace in the east elevation, second floor Room 3, viewed from the west.....	65
Plate 149 (right): The west elevation of second floor Room 3, viewed from the east .....	65
Plate 150 (left): Doorway in the north elevation of second floor Room 4, viewed from the south.....	66
Plate 151 (right): The east elevation of second floor Room 4, viewed from the west .....	66
Plate 152 (left): Fireplace in the east elevation of second floor Room 4, viewed from the west.....	66
Plate 153 (right): The south elevation of second floor Room 4, viewed from the north-east .....	66
Plate 154 (left): The north elevation in second floor Room 5, viewed from the south.....	67
Plate 155 (right): General view of second floor Room 5, from the north-west .....	67
Plate 156 (left): Doorway in the north elevation, second floor Room 6, viewed from the south.....	67
Plate 157 (right): Fireplace in the west elevation, second floor Room 6, viewed from east.....	67
Plate 158: The south elevation in second floor Room 6, viewed from the north-west .....	68
Plate 159 (left): Scar in the north elevation of second floor Room 7, viewed form the south-east .....	68
Plate 160 (right): Stairs at the west end of second floor Room 7, viewed from the east.....	68
Plate 161 (left): Archway mid-way along second floor Room 7, viewed from the east .....	69
Plate 162 (right): Archway at the east end of second floor Room 7, viewed from the west.....	69
Plate 163 (left): The east wall of attic Room 1, viewed from the west.....	69
Plate 164 (right): The west end of attic Room 1, viewed from the east.....	69
Plate 165 (left): The east end of attic Room 2, viewed from the west.....	70
Plate 166 (right): The west wall of attic Room 2, viewed from the east .....	70

## Non-Technical Summary

Following the submission of a planning application and listed building consent application for a series of alterations to Ellel Hall, Galgate, Lancaster, Lancashire, a condition was placed on the decision notices requiring an archaeological building recording, comprising a photographic recording only, be carried out. Greenlane Archaeology was appointed by Mr and Mrs Smith to carry out the work, which was undertaken in February 2020.

The origins of Ellel Hall are uncertain. A building of that name is recorded from at least the late 17<sup>th</sup> century but the map evidence, with a Yate's map of 1786 seeming to indicate that the earlier building was somewhat to the north of the present one. Late maps indicate that the current structure was built in the very late 18<sup>th</sup> or early 19<sup>th</sup> century; the listing considers it to be likely to be early to mid-19<sup>th</sup> century. It is likely to have been built by Abraham Rawlinson, a local merchant from a family of local industrialists with interests in the slave trade, although he is recorded as owning the site on the map of 1786. From him it passed to his nephews and became the property of the Ford family, who owned it until the death of William Ford Jnr in 1898, who had lived in the hall for almost 50 years. The map evidence shows that by the early 19<sup>th</sup> century it had certainly reached essentially its present form.

The building recording was limited to photographs, which included images of the exterior and interior, focussing on features of specific historical or architectural interest, but also general shots. While discussion of the development of the building is limited it is apparent from some of the more readily dateable features within it, when taken in consideration with the documentary history, that the present structure was built in about 1800. Initially it probably just comprised an essentially symmetrical square block, but this was extended with wings to the east and west later in the 19<sup>th</sup> century. During the 20<sup>th</sup> century it was further altered, initially with an external staircase with a concrete balustrade on the south side and probably also a bay window on the east wing. More substantial was the rebuilding or recladding of the east wing much later in the 20<sup>th</sup> century, and an internal staircase was also added to the west wing. Most recently the interior has been extensively modified, with new ceilings and wall finishes added, although a subsequent period of inactivity has led to water ingress, which has caused significant damage to parts of one ceiling.

Nevertheless, the building remains a significant historic structure in the local area, although its original grounds have been encroached upon by newer adjacent housing.

## Acknowledgements

Greenlane Archaeology would like to thank Mr and Mrs Smith for commissioning the project and their architects, William Gould and Julian Handy at Mason Gillibrand, for their assistance with information about the building and with access. Special thanks are also due to the staff of the Lancashire Record Office in Preston for providing access to the relevant archive material.

# 1. Introduction

## 1.1 Circumstances of the Project

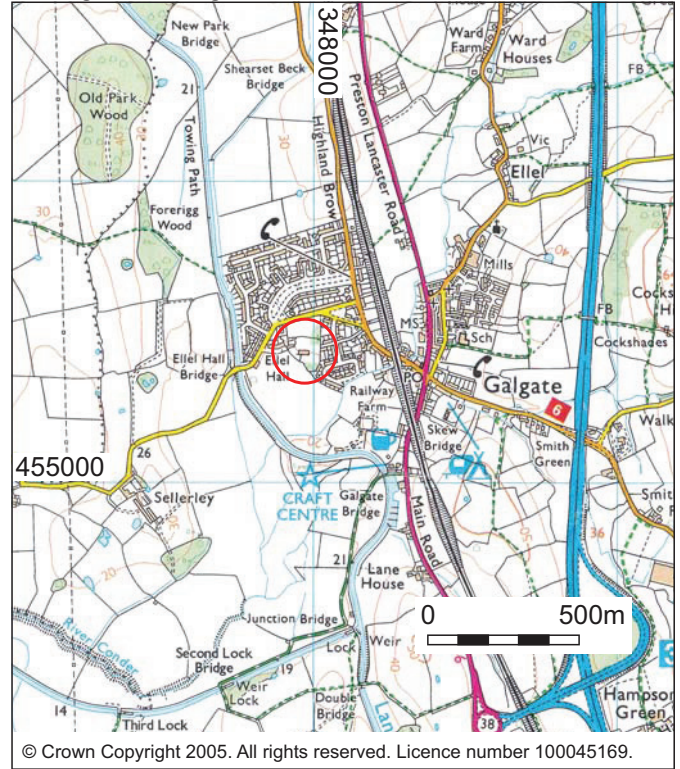
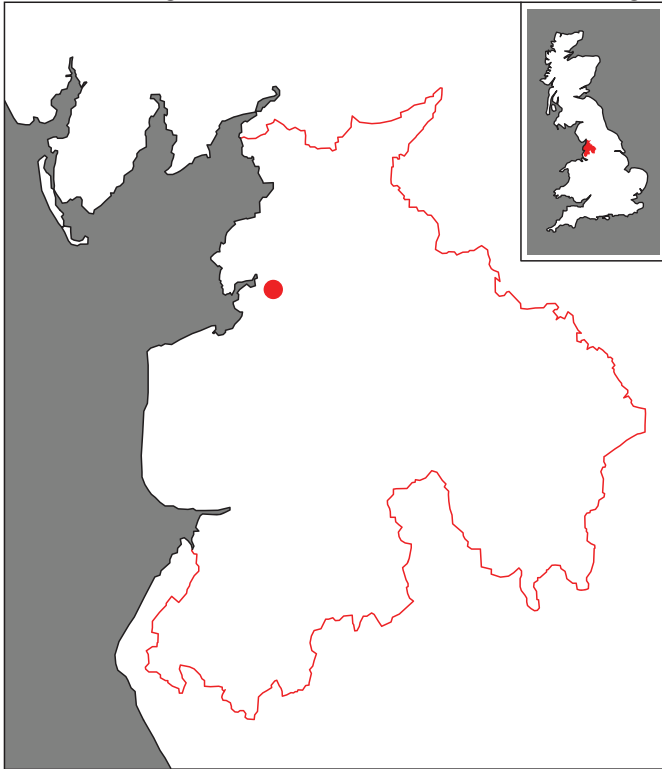
1.1.1 The circumstances of the project are set out in the tables on the inside cover of this report.

## 1.2 Location, Geology, and Topography

1.2.1 Ellel Hall is located on the south-west side of Galgate, west of the A6 and the main north/south railway line and at a height of approximately 20m above sea level (see Figure 1).

1.2.2 The underlying solid geology is dominated by carboniferous millstone grit (Countryside Commission 1998, 83), which is largely overlain by deposits of glacially derived material forming extensive drumlin fields, although in lower lying places this is partially overlain by tidal material, which has created salt-marshes and mud-flats in some cases (*ibid*).





Client: Mr and Mrs Smith

Figure 1: Site location

## 2. Methodology

### 2.1 Introduction

2.1.1 The archaeological building recording is intended to provide a suitable record of the structure comprising only the photographic elements of a Level 2/3 survey as defined by Historic England (Historic England 2016). The building recording was carried out according to the guidelines of the Chartered Institute for Archaeologists (CIfA 2014a; 2014b). A suitable archive has also been compiled to provide a permanent paper and digital record of the project and its results, also in accordance with CIfA guidelines (CIfA 2014c).

### 2.2 Desk-Based Assessment

2.2.1 A brief desk-based assessment was carried out in accordance with the guidelines of the Chartered Institute for Archaeologists (CIfA 2014b), building on the work carried out in the previous Heritage Statement (Townscape 2019). This principally comprised an examination of early maps of the site and published secondary sources. A number of sources of information were used during the compilation of the desk-based assessment:

- **Record Office/Archive Centre:** the majority of original and secondary sources relating to the site are deposited in the relevant Record Office(s) or Archive Centre(s), as specified in the cover sheet of this report. Of principal importance are early maps of the site. These were examined in order to establish the development of the site, date of any structures present within it, and details of land use, in order to set the site in its historical, archaeological, and regional context. In addition, any relevant primary sources relating to the property and information about the site's owners and occupiers were acquired where available;
- **Online Resources:** where available, mapping such as Ordnance Survey maps and relevant information held in other archives were consulted online;
- **Greenlane Archaeology:** Greenlane Archaeology's office library includes maps, local histories, and unpublished primary and secondary sources. These were consulted where relevant, in order to provide information about the history and archaeology of the site and the general area.

### 2.3 Building Recording

2.3.1 The building recording comprising the photographic elements of a Historic England Level 2/3 type survey (Historic England 2016), which was intended to provide relatively detailed record of the building but with limited discussion in terms of the recorded historical development of the property. The recording comprised the following elements:

- **Photographs:** photographs in colour digital format (as both JPEG and RAW file format at a size of 12meg, using a Panasonic Lumix DC-FZ82 with a sensor size of over 18 megapixels, in accordance with the guidance produced by Historic England (2015)) were taken of the main features of the building, its general surroundings, and any features of architectural or archaeological interest (see *Appendix 3*). A selection of the colour digital photographs is included in this report, and the remaining photographs are in the project archive.

### 2.4 Archive

2.4.1 The archive, comprising the drawn, written, and photographic record of the building, will be deposited with the relevant Record Office or Archive Centre, as detailed on the cover sheet of this report, together with a copy of the report. The archive has been compiled according to the standards and guidelines of the CIfA guidelines (CIfA 2014c; see *Appendix 4*). In addition, details will be submitted to the Online Access to the Index of archaeological investigationS (OASIS) scheme. This is an internet-based project intended to improve the flow of information between contractors, local authority heritage managers and the general public. A copy of the report will be provided to the client and a digital copy of



the report will be provided for the relevant Historic Environment Record, as detailed on the cover sheet of this report.

### 3. Desk-Based Assessment

#### 3.1 Map Regression

3.1.1 **Introduction:** early county-wide maps of the area, such as Yates's map of 1786 (Plate 1) and Hennes's map of 1830 (Plate 2), show buildings at the site of Ellel Hall, but otherwise lack detail. Yates' map is of interest because it appears to connect the 'Ab<sup>m</sup> [Abraham] Rawlinson Esq' to the hall (see Section 3.2), although it appears to show a building to the north of the road suggesting that either the road was rerouted to its current location or that an earlier building on the site was not in the same location as the present hall (Plate 1). Hennes's map of 1830 is also quite schematic but it appears to show the current arrangement, with the house and associated grounds to the south of the road (Plate 2). The earliest plans with enough useful detail for understanding the development of the site, however, date from the early 19<sup>th</sup> century onwards.



Plate 1 (left): Extract from Yates' map of 1786

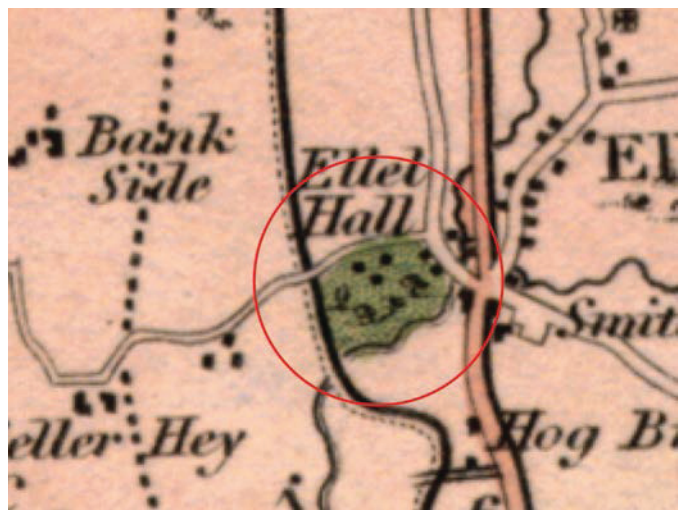


Plate 2 (right): Extract from Hennes's map of 1830

3.1.2 **Cockerham Tithe map, 1839:** this is the first plan of the site detailed enough to show individual buildings and several buildings are marked at Ellel Hall (LRO AT/1 1839), including the main east/west block (Plate 3). The building that is obviously the hall itself is shown as a somewhat irregular block compared to the square structure that is there now, and there is also a projecting wing heading north from the west end of the west wing that does not currently exist.

3.1.3 **Ordnance Survey, 1848:** a similar arrangement of buildings to what is shown on the tithe map is shown on the Ordnance Survey map of 1848, although the square block making up the main part of the hall is more evident (Plate 4). Additional details shown on the Ordnance Survey map include the layout of formal gardens (Plate 4; cf. Plate 3).

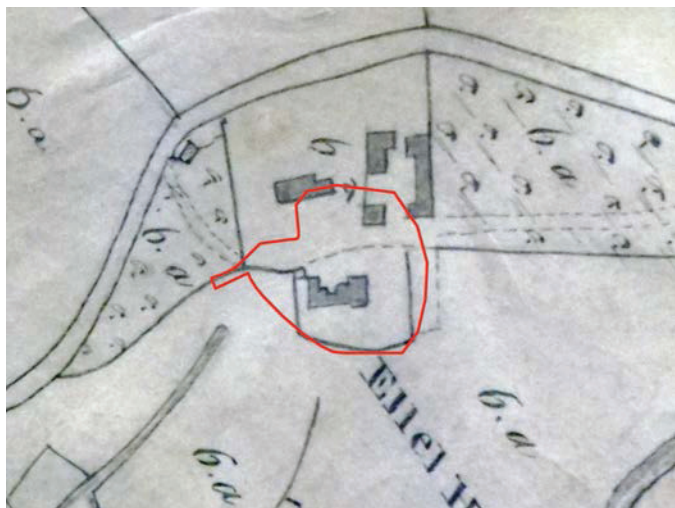


Plate 3 (left): Extract from the tithe map of 1846



Plate 4 (right): Extract from the Ordnance Survey map of 1848

3.1.4 **Ordnance Survey, 1891:** this is the first edition 25 inch map, and so is much more detailed than the previous map (Plate 5; cf. Plate 4). Some alterations to the main hall appear to have been made, specifically the addition of a wing to the east, and the arrangement of the gardens to the north has also been changed.

3.1.5 **Ordnance Survey, 1895:** the 1895 edition of the Ordnance Survey map shows the same information as the 1891 edition, albeit in less detail due to the respective scales used (Plate 6; cf. Plate 5). The principal change seems to be to the gardens to the north.

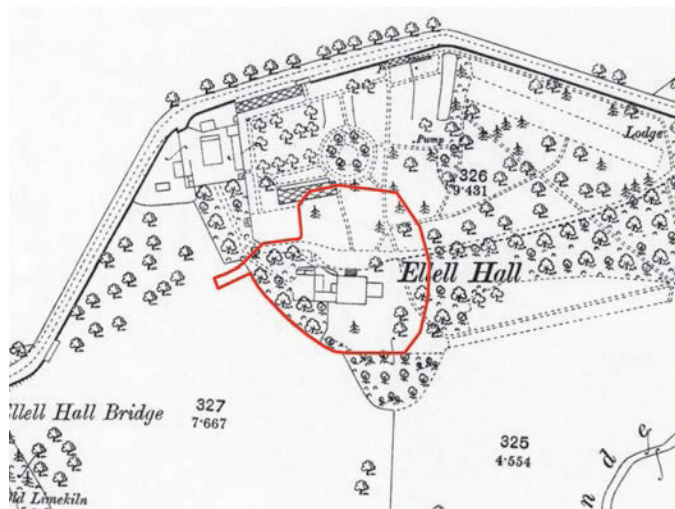


Plate 5 (left): Extract from the Ordnance Survey map of 1891

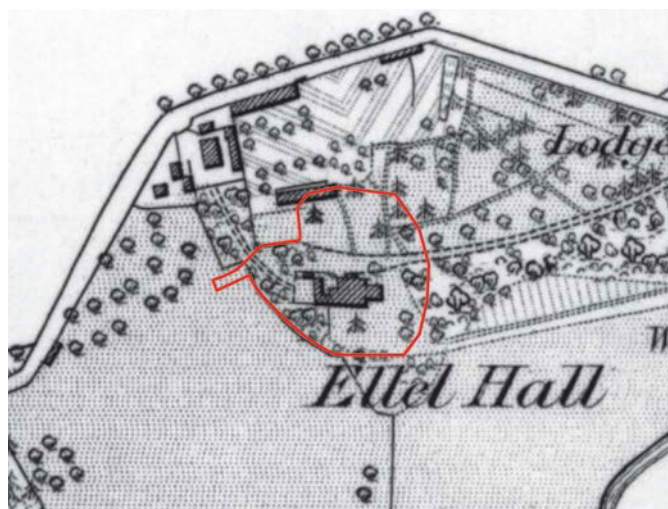


Plate 6 (right): Extract from the Ordnance Survey map of 1895

3.1.6 **Ellel Hall Estate sales particulars, 1898:** the site comprised part of Lot 1 in sales particulars from 1898 (LRO DDHH 1/159 1898). The map used is the same as the Ordnance Survey map of 1891 (Plate 7; cf. Plate 5).

3.1.7 **Ordnance Survey, 1912:** some minor additions have been made to the hall, comprising a possible porch on the south side of the main building and the bay window on the south side of the east wing, but the site is largely unchanged from the first to second edition 25 inch map (Plate 8; cf. Plate 5).



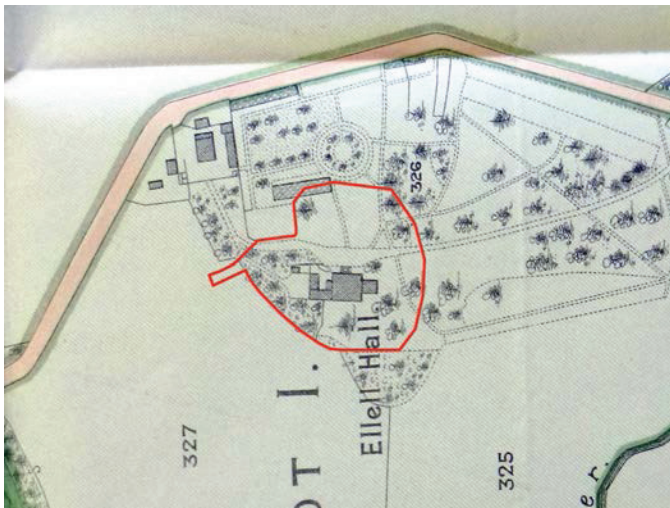


Plate 7 (left): Extract from the Ordnance Survey map of 1898

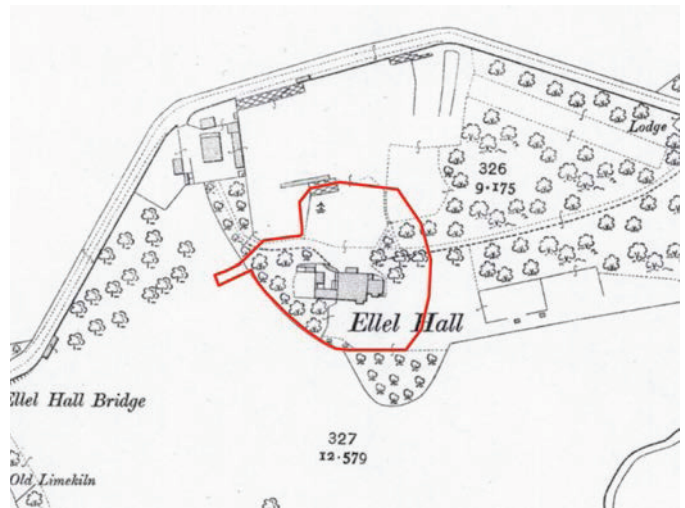


Plate 8 (right): Extract from the Ordnance Survey map of 1912

3.1.8 **Photograph, late 19<sup>th</sup> – early 20<sup>th</sup> century:** an undated photograph of the north elevation of Ellel Hall is reproduced by Roskell (2007, 50). This is presumably late 19<sup>th</sup> or early 20<sup>th</sup> century in date and shows the front of the hall much as it currently is.



3.1.9 **Ordnance Survey, 1919:** the site appears largely unchanged, however, less detail is shown on the 1919 edition of the six inch Ordnance Survey map (Plate 9; cf. Plate 8).

3.1.10 **Sales particulars, 1931:** the plan accompanying the Ashton Hall Estate sales particulars of 1931 is clearly based on the six inch edition of the Ordnance Survey, which was revised in 1910 (Plate 10; cf. Plate 9; Proctor and Birkbeck 1931). In addition, there is a photograph of the hall included with these particulars, which shows the north elevation of the property, much as it now is, although the east wing was evidently different at this time (Plate 11).

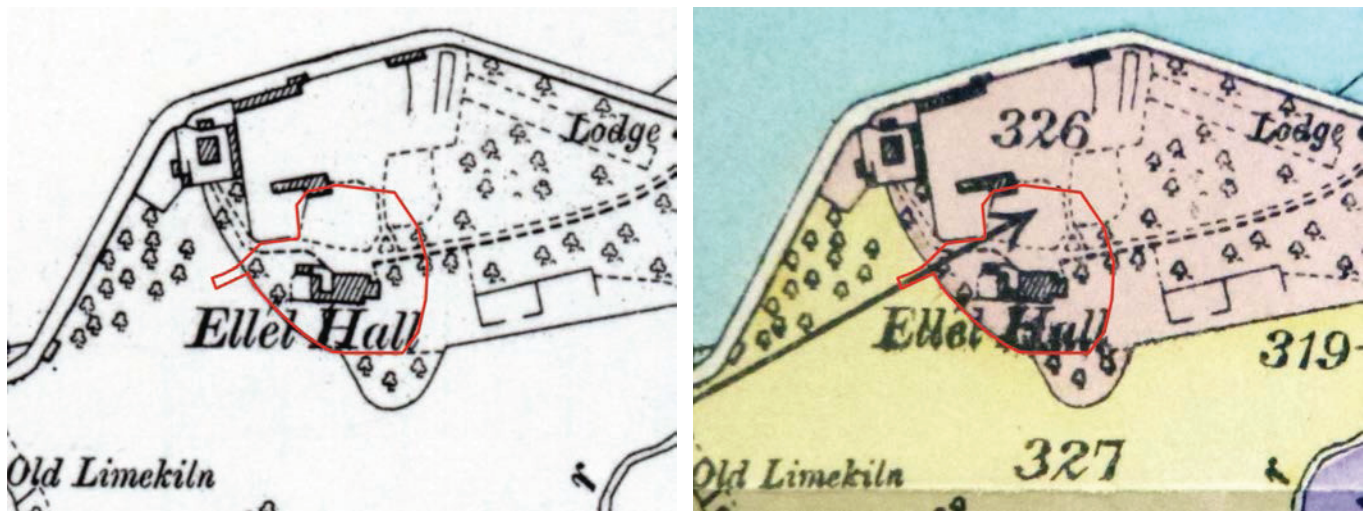


Plate 9 (left): Extract from the Ordnance Survey map of 1919

Plate 10 (right): Extract from the plan with the sales particulars of 1931 (after Proctor and Birkbeck 1931)



Plate 11: Photograph of Ellel Hall in 1931 (after Proctor and Birkbeck 1931)

## 3.2 Site History

3.2.1 **Origins and early owners:** the current building on the site is thought to be of early to mid-19<sup>th</sup> century date (see *Appendix 1*) although it is clear that there was an earlier structure on the site, also apparently called Ellel Hall. A petition of 1688 refers to a 'William Rippon of Hareappletree and Ellel Hall' (Roskell 2007, 50) and in 1708 the will of William Charnock of Ellel Hall lists livestock (LRO WRW/A/R22B/13 1708), suggesting it was essentially a farm at this time. By the 1720s it said to have been occupied by a Thomas Jackson (Hewitson 1900, 120). Farrer and Brownbill state that it was owned from the 1740s until 1898 by the Ford family (Farrer and Brownbill 1914, 100) but this is clearly incorrect because in 1762 the will of Leonard Clarkson, who is described as a husbandman of Ellel Hall, was drawn up, suggesting that the site was still essentially a farm (LRO WRW/A/R102/38 1762). Farrer and Brownbill probably took their information from Hewitson, who states '*The Fords for a long time owned Ellel Hall*', without giving any specific dates (1900, 120), but he appears to have been confused by the



later connections that the Fords had with the site through marriage to the Rawlinsons. More significant is the ownership of the Rawlinson family, although it is not clear when they first arrived at Ellel Hall. Abraham Rawlinson is named as the owner of Ellel Hall on Yate's map of 1786 (see *Section 3.1.1*) but the building shown is clearly in a different location and so not the current one, while a document dated 1799 describes Abraham Rawlinson as '*late of Lancaster, now of Ellel Hall*' (CAC(B) BDX 83/28-29 1799). The Rawlinsons were extremely wealthy through their connections to a range of local industries and mercantile interests as well as the slave trade, had a plantation in Granada (mentioned in his will, see below), and Abraham was an MP for Lancaster between 1780 and 1790 (Hewitson 1900, 120), dying in 1803. It is possible, therefore, that Abraham Rawlinson was not at Ellel Hall for long; his will, first drawn up in 1800 and proved in 1803 (LRO DDX 2743/MS 4179 1800; DDX 2743/MS 4180 1802; LRO WRW/A/R125c/12 1803), states that his property was to be left to his nephews, John Ford, John Walker, and Robert Barclay and describes other items of interest that were to be left in the house:

*'It is my will & mind that the silver vase & stand presented me by the ladys [sic] & gentlemen of Lancaster as a token of their approbation of my conduct in parliament for the ten years I had the honor [sic] to represent them & also a large silver tankard & two handled silver cup & also the following paintings or pictures by Rumney [sic, referring to George Romney] vis his likeness of my dear father & mother & of myself when I was twenty two years old'.*

**3.2.2 Later Owners:** details of the owners can only be extracted from a few sources without access to the deeds to the property. Following Abraham Rawlinson's death, it is clear that it ultimately became the property of the Ford family, although not immediately as the tithe apportionment of 1839 describes it as belonging to '*the devises of the late Abraham Rawlinson Esquire*' (LRO AT/1 1839). John Ford married Elizabeth Rawlinson, the daughter of Thomas Hutton Rawlinson, who was evidently Abraham Rawlinson's brother (Hewitson 1900, 120). Regardless of this stated ownership in 1839 the will of John Ford the younger describes him as of Ellel Hall (LRO WRW/A/R131/92 1819) as does that of his wife, Elizabeth Ford (LRO WRW/A/R177/95 1849), and their son Abraham Rawlinson Ford who succeeded her, albeit only briefly (LRO WRW/A/R177/94 1849). It subsequently passed to his only surviving sibling, William Ford, who occupied it for nearly 50 years (Hewitson 1900, 121), and after his death in 1898 it was purchased by Lord Ashton (Farrer and Brownbill 1914, 100; Roskell 2007, 50).

**3.2.3 Occupiers:** in general, the owners of the building were also the occupiers, with the Rawlinsons and their decedents perhaps being the most noteworthy. However, it is difficult in the case of some sources to be sure who were owners and who just occupiers. Following Abraham Rawlinson's death, it is apparent that his widow, Mary, soon moved elsewhere because her will of 1808 describes her as '*formerly of Ellel Hall but late of Great Queen St Queen Square Lancaster*' (LRO WRW/A/R125c 1808). During the period of ownership by the Fords it was also occupied for a time in the early 1820s by William Hinde, who owned a mill at Dolphinholme (Roskell 2007, 50; he is listed in 1825: Baines 1825, 661). This is presumably the same person as 'William Hindle' who is listed there in the tithe apportionment of 1839 (LRO AT/1 1839), but the census confirms that it was occupied by William Ford Jnr from 1841 until at least 1881 (see *Appendix 2*). After William Ford Jnr's death in 1898 it was apparently left empty for a while (Hewitson 1900, 121).

**3.2.4 The building:** there is considerable uncertainty about when the current house was built. Hewitson states that '*it was apparently built – at any rate, the principal portion of it – about 1700*' (1900, 120) but this is clearly incorrect and is perhaps meant to mean 1800. Given its scale and relative lavishness it seems most likely that it was built by Abraham Rawlinson, in which case a date of just before 1800 is extremely plausible on the basis of the available evidence, and certainly before his death in 1803, although he had evidently acquired the site by at least 1786. It has been suggested, presumably on the basis of the architectural style, that it was constructed by Francis Webster (Martin 2004, 104), but no other evidence to support this is forthcoming. Indeed, it is equally likely, on the same basis, that it could have been the work of Thomas Harrison (1744-1829) who carried out several other commissions of this scale in the Lancaster area (Champness 2005). The earliest description is that given in the tithe apportionment of 1839, which refers to it as a '*Mansion house*' with the estate also including '*sundry out buildings orchard gardens and several closes or parcels of land*' (LRO AT/1 1839).

3.2.5 Later descriptions are available of the property, in addition to the early maps and photographs (see *Section 3*). The first of these comes from the sales particulars of 1898 (LRO DDHH 1/159 1898), which describe the building and site as follows:

*'Standing in CHOICELY LAID OUT GROUNDS, with an Avenue of Splendidly Grown Trees, and containing Handsome Entertaining Rooms, Study, Twelve Bedrooms, Dressing Room, Bath Room, and W.C., and complete Domestic Offices, heated with hot and cold water throughout; Excellent Stabling, Coach-house, Grooms and Gardener's Cottage, Large and Productive Garden, stocked with Splendid Fruit Trees, &c., Greenhouses, Vinery, Peach-house, Archery Range, and about 50 Acres Excellent Meadow and Pasture Land. There is a good Rookery in the Grounds...'* A subsequent description in the same document also lists a coachman's house, gardener's lodge, coach house, harness rooms, stables, loose boxes, piggeries, greenhouses, and meadow and pasture land adjoining (*ibid*).

Shortly after this date, in late 1899, it was subject to some remodelling: *'the Hall has, internally, been put into a better order; and the roof portion has also been slightly altered'* (Hewitson 1900, 121).

3.2.6 A description from 1931, when Ellel Hall was sold as part of the Ashton Hall estate, provides even more detail:

*'The Hall, which stands in secluded and well-wooded grounds extending to about 9a. Or. 28p. is approached by a carriage drive through an avenue of dignified forest trees from a picturesque entrance lodge containing four rooms. The accommodation of the Hall comprises: - GROUND FLOOR: - Entrance Hall (33 ft. by 9ft.), Dining Room (17ft. by 15ft. 6in.), Drawing Room (22ft by 17ft.) with verandah, Study (17ft. by 11ft. (with Gents. Lavatory and W.C.), Billiard Room (27ft. 4in. by 18ft.), large Kitchen, Scullery, Servants' Hall, Butler's Pantry, Larder, Stores, etc. The Domestic Offices have excellent tiled floors. BASEMENT: - There are eight well-lighted and dry Cellars, 8ft. high. Two of these are fitted as Larder and Wine Cellar respectively. FIRST FLOOR: - Five principal Bedrooms, Bathroom and W.C. SECOND FLOOR: - Five Bedrooms, Bathroom, Boxroom, Housemaid's Sink, etc.'* (Proctor & Birkbeck 1931).

## 4. Building Recording

### 4.1 Arrangement and Fabric

4.1.1 **Arrangement:** the building comprises an essentially linear range orientated east/west but built around a central core of square plan (Figure 1). It is two storeys plus an attic but as it is built into the slope there is a lower ground floor, essentially comprising a cellar on the north and east sides but accessible from the outside on the south and west sides.

4.1.2 **Fabric:** it is primarily constructed from the local dark yellow gritstone, externally laid in courses of well-dressed blocks. Internally the exposed faces are rougher courses of roughly dressed stone, although brick has been used in many of the internal walls (both handmade and later machine-made types). The timber internally is largely well-finished and sawn although iron beams have clearly been inserted in many areas. The most obvious modern alteration is the east wing, which is clearly recent dressed stonework clad around an earlier structure, although the balustraded external staircase to the south is evidently made of concrete and supported on an iron lintel and is likely to be early 20<sup>th</sup> century. Internally the building has been substantially modernised, with new plasterboard ceilings in almost every room and new wall finishes, including attached panelling in several rooms on the ground floor.

4.1.3 **Recording:** photographs were taken of the whole of the exterior and in every room, where access and space permitted, except in a few cases where there was nothing of architectural or historical interest present. Only the central and eastern part of the attic was accessible.

### 4.2 External Detail

#### 4.2.1 **North elevation:**



Plate 12: The north external elevation, viewed from the north





**Plate 13 (left): The central and north-west end of the north external elevation, viewed from the north**  
**Plate 14 (right): Tie rod plate east of the main entrance in the north external elevation, viewed from the north**



**Plate 15: The east end of the north external elevation, viewed from the north-east**



4.2.2 **East elevation:**



**Plate 16 (left): East external elevation, viewed from the east**

**Plate 17 (right): South-east corner of the east wing showing concrete foundations, viewed from the south-east**



4.2.3 **South elevation:**

**Plate 18: General view of the south external elevation, viewed from the south-east**



**Plate 19 (left): The east end of the south external elevation, viewed from the south**



**Plate 20 (right): The junction of the east wing with the south elevation, viewed from south-east**





**Plate 21: General view of the central part of the south external elevation, viewed from the south**



**Plate 22 (left): Blocked windows on the east side of the central part of the south external elevation, viewed from the south**



**Plate 23 (right): The concrete balustraded staircase attached to the centre of the south external elevation, viewed from the south-west**





**Plate 24 (left):** The west end of the south external elevation, viewed from the south-east



**Plate 25 (right):** General view of the west end of the south external elevation, viewed from the south-west

#### 4.2.4 *West elevation:*



**Plate 26 (left):** The west external elevation, viewed from the west



**Plate 27 (right):** The west wing where it joins the main west external elevation, viewed from the north-west



**Plate 28 (left): Detail of lower ground floor level doorway and raised walkway in west external elevation, viewed from the west**

**Plate 29 (right): Vaulted store below retaining wall running from the west external elevation, viewed from the south**

**This page has been intentionally left blank**

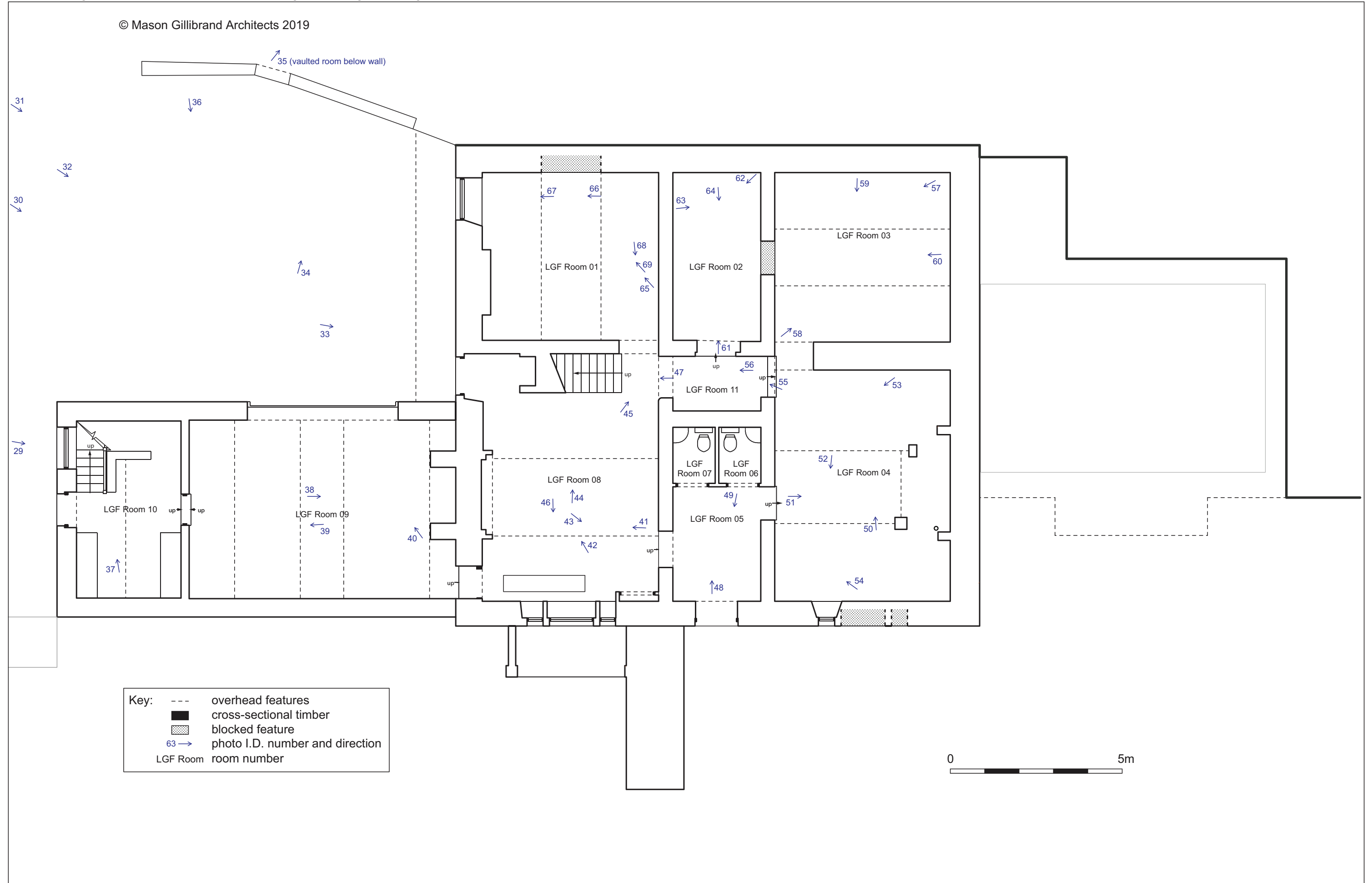


Figure 2: Lower Ground Floor plan



© Mason Gillibrand Architects 2019

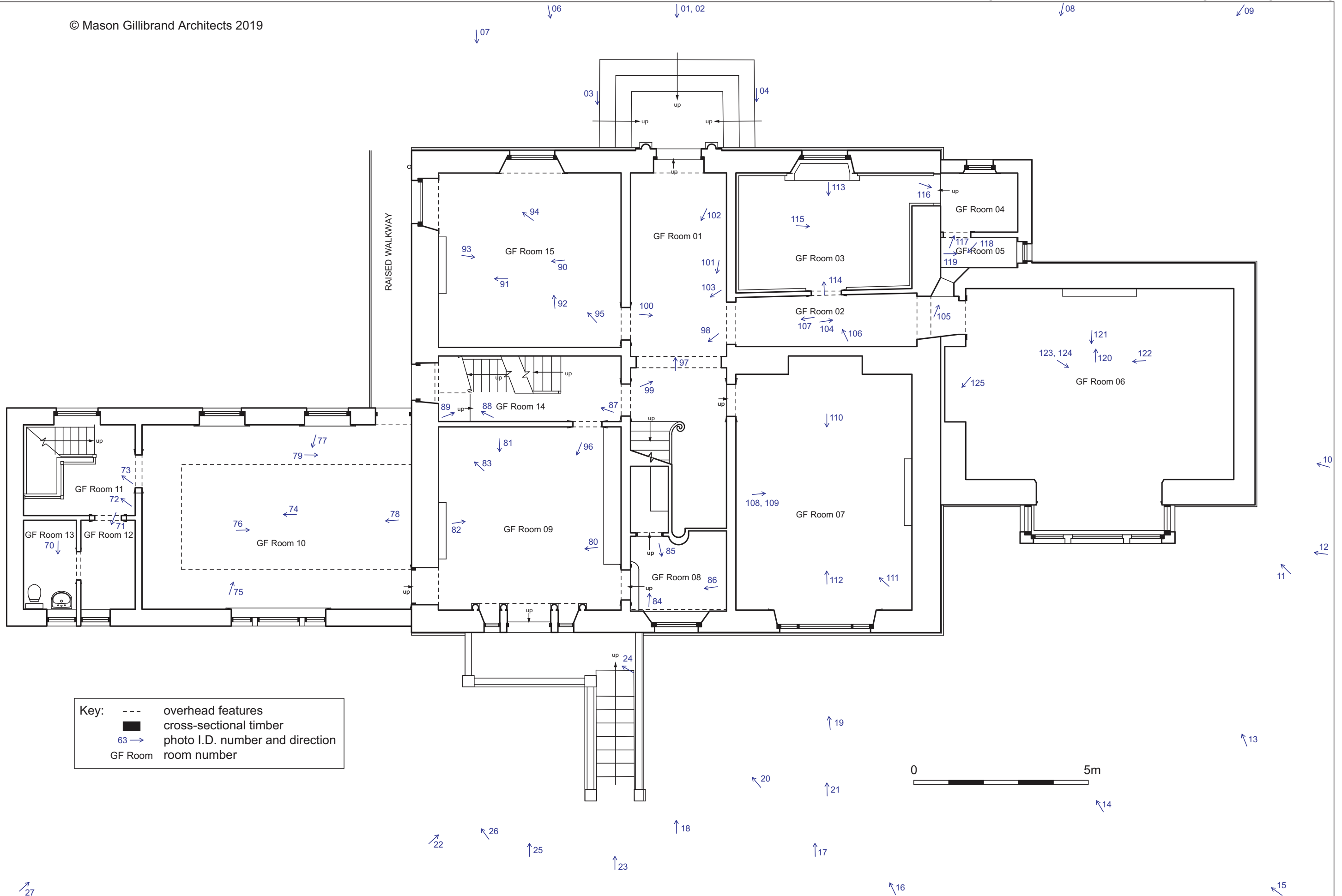
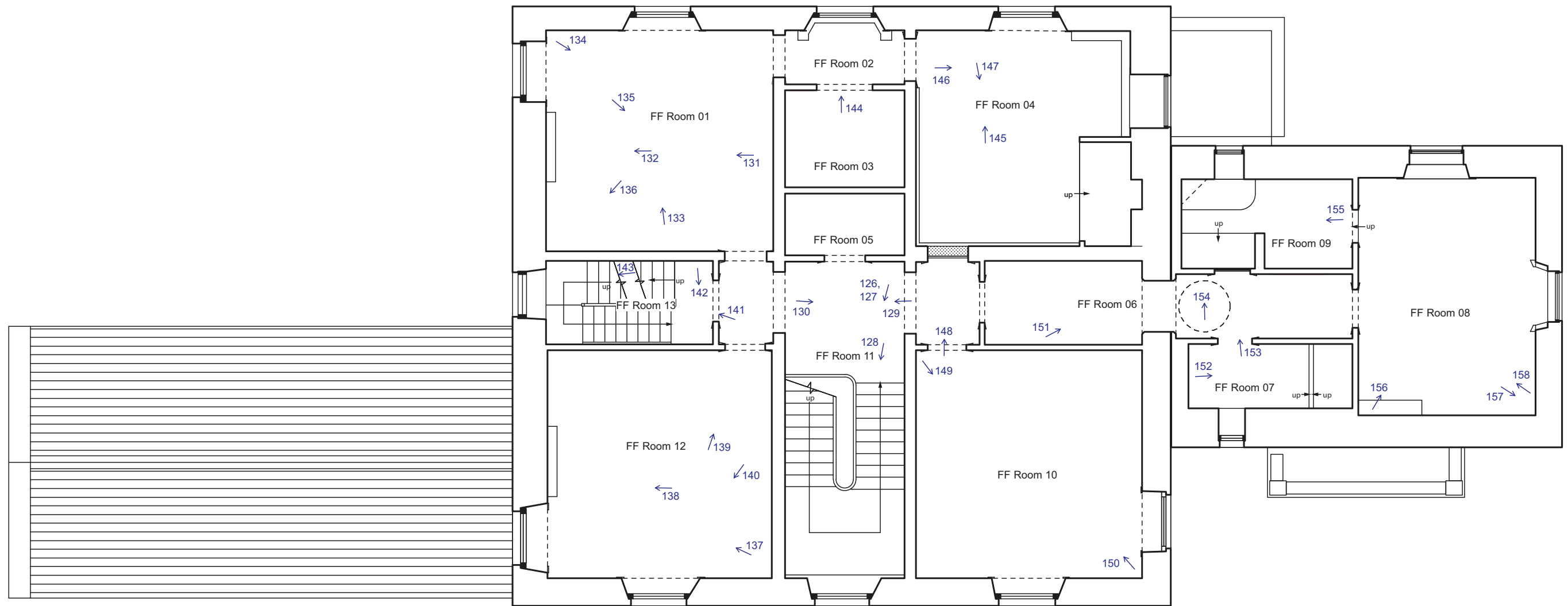


Figure 3: Ground Floor plan



© Mason Gillibrand Architects 2019



Key:	---	overhead features
	■	cross-sectional timber
	▨	blocked feature
	63 →	photo I.D. number and direction
	FF Room	room number

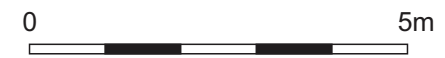
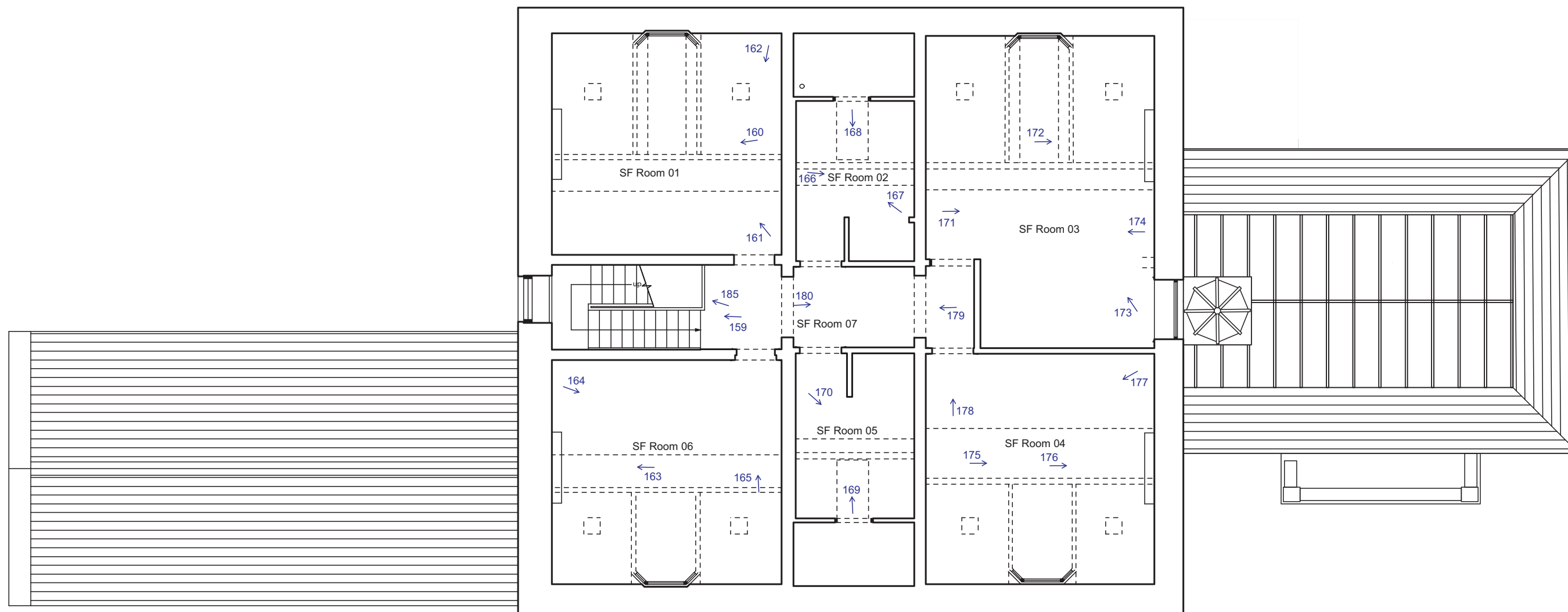


Figure 4: First Floor plan

© Mason Gillibrand Architects 2019



Key: --- overhead features  
 ■ cross-sectional timber  
 63 → photo I.D. number and direction  
 LGF Room room number

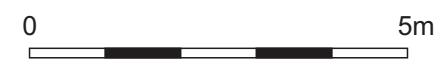
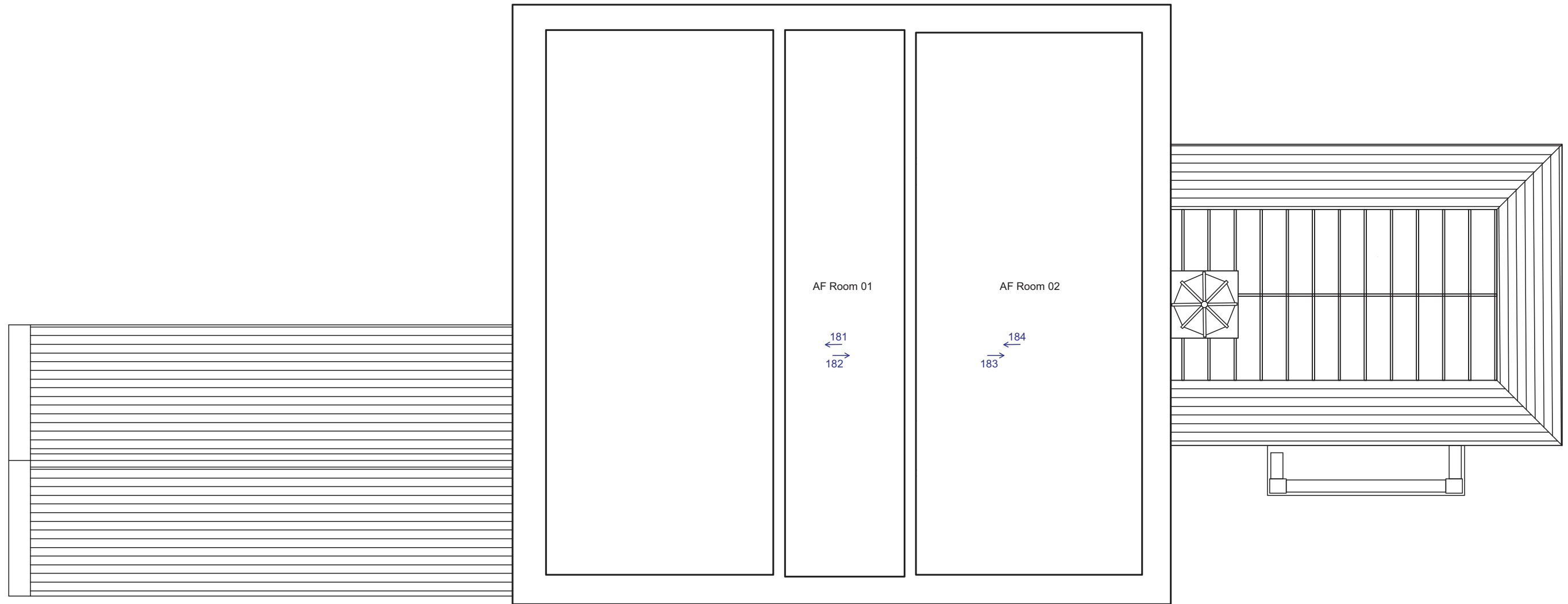


Figure 5: Second Floor plan

© Mason Gillibrand Architects 2019



Key: --- overhead features  
63 → photo I.D. number and direction  
AF Room room number

0 5m

Figure 6: Attic Floor plan

**This page has been intentionally left blank.**

### 4.3 Internal Detail

#### 4.3.1 Lower ground floor Room 1:



Plate 30 (left): The north elevation, lower ground floor Room 1, viewed from the south-east

Plate 31 (right): The west elevation, lower ground floor Room 1, viewed from the east



Plate 32 (left): Doorway in the south elevation, lower ground floor Room 1, viewed from the north

Plate 33 (right): Iron I-beams in the ceiling of lower ground floor Room 1, viewed from the south-east



4.3.2 **Lower ground floor Room 2:**

**Plate 34 (left):** The north-west elevation, Room 2, viewed from the south-east



**Plate 35 (right):** The south-east elevation, Room 2, viewed from the north-west



**Plate 36 (left):** Blocked opening in the east elevation, lower ground floor Room 2, viewed from the west



**Plate 37 (right):** The south elevation, lower ground floor Room 3, viewed from the north



4.3.3 Lower ground floor Room 3:



Plate 38 (left): General view of lower ground floor Room 3, from the north-east

Plate 39 (right): General view of lower ground floor Room 3, from the south-west



Plate 40: West elevation showing blocked opening, lower ground floor Room 3, viewed from the east

4.3.4 **Lower ground floor Room 4:**

**Plate 41 (left): North elevation, lower ground floor Room 4, viewed from the south**



**Plate 42 (right): East elevation, lower ground floor Room 4, viewed from the west**



**Plate 43 (left): South elevation, lower ground floor Room 4, viewed from the north**



**Plate 44 (right): West elevation showing tie rod and meat hooks, lower ground floor Room 4, viewed from the north-east**



4.3.5 **Lower ground floor Room 5:**



**Plate 45: Doorways in the south and west elevations of lower ground floor Room 5, viewed from the north-east**

4.3.6 **Lower ground floor Room 6 and 7:**



**Plate 46: Lower ground floor Rooms 6 and 7, viewed from the south**



## 4.3.7 Lower ground floor Room 8:



Plate 47 (left): West elevation, lower ground floor Room 8, viewed from the east

Plate 48 (right): Moulded beam, lower ground floor Room 8, viewed from the south-east



Plate 49 (left): Doorway on the south side of the east elevation, lower ground floor Room 8, viewed from the west

Plate 50 (right): Doorway on the north side of the east elevation, lower ground floor Room 8, viewed from the south-west





**Plate 51 (left): Window in the south elevation, lower ground floor Room 8, viewed from the north**

**Plate 52 (right): Stairs on the north side of lower ground floor Room 8, viewed from the south**

**4.3.8 Lower ground floor Room 9:**



**Plate 53 (left): The east end of lower ground floor Room 9, viewed from the west**

**Plate 54 (right): The west end of lower ground floor Room 9, viewed from the east**



Plate 55: Garage door in the north elevation of lower ground floor Room 9, viewed from the south-east

#### 4.3.9 Lower ground floor Room 10:



Plate 56: Stairs at the west end of lower ground floor Room 10, viewed from the south



4.3.10 **Lower ground floor Room 11:**



**Plate 57 (left): Safe doors, lower ground floor Room 11, viewed from the east**

**Plate 58 (right): Detail of makers plate 'MILNERS [...] FIRE RESISTING [...] LIVERPOOL AND LONDON' on the safe doors, lower ground floor Room 11, viewed from the east**

4.3.11 **Ground floor Room 1:**

**Plate 59 (left): The north elevation of ground floor Room 1, viewed from the south**  
**Plate 60 (right): The east elevation of ground floor Room 1, viewed from the south-west**



**Plate 61 (left): The south end of ground floor Room 1, viewed from the north-east**  
**Plate 62 (right): The staircase at the south end of ground floor Room 1, viewed from the north-east**





**Plate 63 (left):** Cornice and arch detail in ground floor Room 1, viewed from the north-east

**Plate 64 (right):** Modern ceiling rose in ground floor Room 1, viewed from the north-east

**4.3.12 *Ground floor Room 2:***



**Plate 65 (left):** Doorway in the north elevation in ground floor Room 2, viewed from the south-east

**Plate 66 (right):** Doorway in the west elevation in ground floor Room 2, viewed from the east



Plate 67 (left): Arch in ground floor Room 2, viewed from the west

Plate 68 (right): Lancet window at the east end of ground floor Room 2, viewed from the south-west

#### 4.3.13 *Ground floor Room 3:*



Plate 69 (left): The north elevation in ground floor Room 3, viewed from the south

Plate 70 (right): The east elevation in ground floor Room 3, viewed from the west





**Plate 71: The south elevation in ground floor Room 3, viewed from the north**

**4.3.14 Ground floor Room 4:**



**Plate 72 (left): Window in the north elevation of ground floor Room 4, viewed from the south-west**



**Plate 73 (right): General view of ground floor Room 4, viewed from the north-west**



4.3.15 *Ground floor Room 5:*

**Plate 74 (left):** Lancet window in the south-west corner of ground floor Room 5, viewed from the north-east

**Plate 75 (right):** Window in the east elevation of ground floor Room 5, viewed from the west

4.3.16 *Ground floor Room 6:*

**Plate 76 (left):** Fireplace in the north elevation of ground floor Room 6, viewed from the south

**Plate 77 (right):** Window in the south elevation of ground floor Room 6, viewed from the north



**Plate 78 (left): The west elevation in ground floor Room 6, viewed from the east**



**Plate 79 (right): The missing modern ceiling rose in ground floor Room 6, viewed from the north-west**



**Plate 80: Cornice detail in ground floor Room 6, viewed from the north-east**

4.3.17 **Ground floor Room 7:**

**Plate 81 (left): The north elevation in ground floor Room 7, viewed from the south**



**Plate 82 (right): The east elevation in ground floor Room 7, viewed from the west**



**Plate 83 (left): The fireplace in the east elevation of ground floor Room 7, viewed from the west**



**Plate 84 (right): The south elevation in ground floor Room 7, viewed from the north**



4.3.18 **Ground floor Room 8:**



**Plate 85 (left): The north elevation in ground floor Room 8, viewed from the south**



**Plate 86 (right): The south elevation in ground floor Room 8, viewed from the north**



**Plate 87: The west elevation in ground floor Room 8, viewed from the east**

4.3.19 **Ground floor Room 9:**

**Plate 88 (left): The west elevation in ground floor Room 9, viewed from the east**



**Plate 89 (right): The south elevation in ground floor Room 9, viewed from the north**



**Plate 90 (left): The east elevation in ground floor Room 9, viewed from the west**



**Plate 91 (right): Cornice detail in ground floor Room 9, viewed from the south-east**



4.3.20 **Ground floor Room 10:**



**Plate 92 (left):** The north elevation in ground floor Room 10, viewed from the south



**Plate 93 (right):** The east elevation in ground floor Room 10, viewed from the west



**Plate 94 (left):** The south elevation in ground floor Room 10, viewed from the north



**Plate 95 (right):** The west elevation in ground floor Room 10, viewed from the east

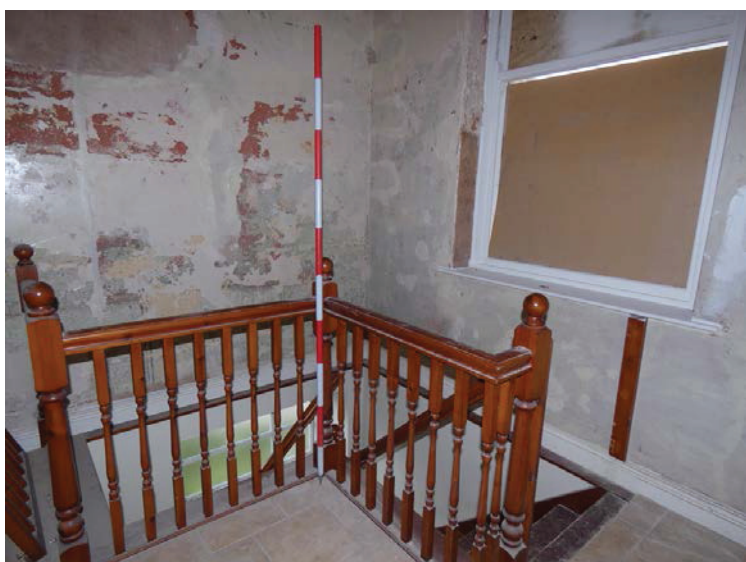




**Plate 96 (left): The ceiling in ground floor Room 10, viewed from the east**

**Plate 97 (right): The tiled floor in ground floor Room 10, viewed from the west**

#### 4.3.21 *Ground floor Room 11:*



**Plate 98 (left): Stairs in ground floor Room 11, viewed from the south-east**

**Plate 99 (right): Window in the north elevation of Room 11, viewed from the south-east**

4.3.22 **Ground floor Room 12:**



Plate 100: General view of ground floor Room 12, viewed from the north-east

4.3.23 **Ground floor Room 13:**



Plate 101: General view of ground floor Room 13, viewed from the north



4.3.24 **Ground floor Room 14:**

**Plate 102 (left): Stairs in ground floor Room 14, viewed from the east**

**Plate 103 (right): Door to the exterior, west end of ground floor Room 14, viewed from the east**

4.3.25 **Ground floor Room 15:**

**Plate 104 (left): The north elevation of ground floor Room 15, viewed from the south**

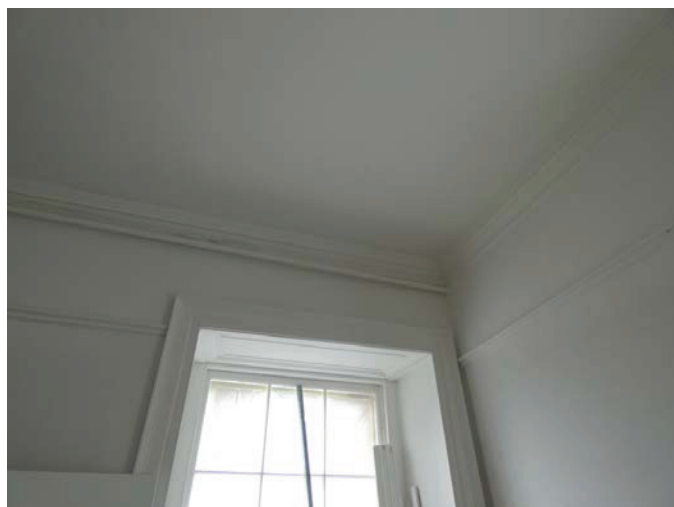
**Plate 105 (right): The east elevation of ground floor Room 15, viewed from the west**





**Plate 106 (left): The west elevation of ground Room 15, viewed from the east**

**Plate 107 (right): Detail of the fireplace in the west elevation of ground floor Room 15, viewed from the east**



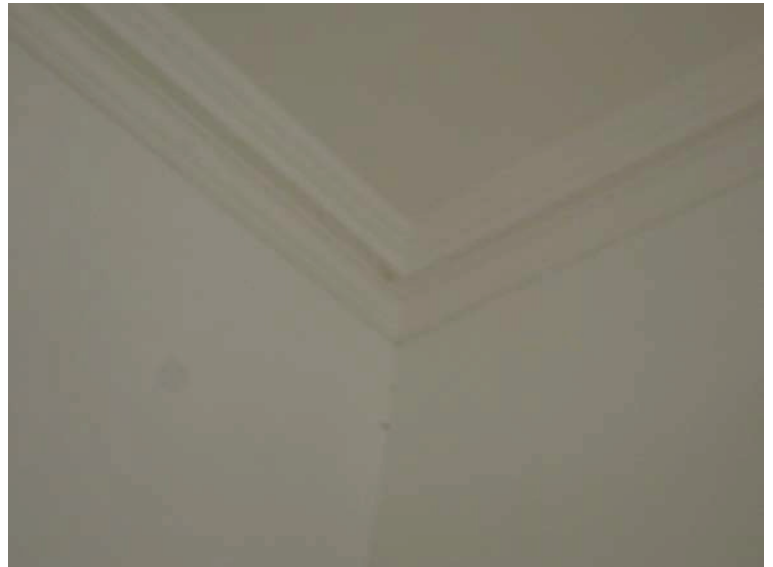
**Plate 108 (left): Cornice detail in ground floor Room 15, viewed from the south-east**

**Plate 109 (right): Modern ceiling rose in ground floor Room 15, viewed from the south-east**

4.3.26 *First floor Room 1:*

**Plate 110 (left):** The north elevation in first floor Room 1, viewed from the south

**Plate 111 (right):** The west elevation in first floor Room 1, viewed from the east



**Plate 112 (left):** The fireplace in the west elevation of first floor Room 1, viewed from the east

**Plate 113 (right):** Cornice detail in first floor Room 1, viewed from the north-east

4.3.27 **First floor Room 2:**



**Plate 114: Window seat in the north elevation of first floor Room 2, viewed from the south**

4.3.28 **First floor Room 4:**



**Plate 115 (left): Window in the north elevation of first floor Room 4, viewed from the south**



**Plate 116 (right): The east elevation in first floor Room 4, viewed from the west**



4.3.29 *First floor Room 6:*

**Plate 117 (left):** Blocked western doorway in the north elevation of first floor Room 6, viewed from the south



**Plate 118 (right):** Blocked eastern doorway in the north elevation of first floor Room 6, viewed from the south



**Plate 119 (left):** Panelled doorway mid-way along first floor Room 6, viewed from the south-west



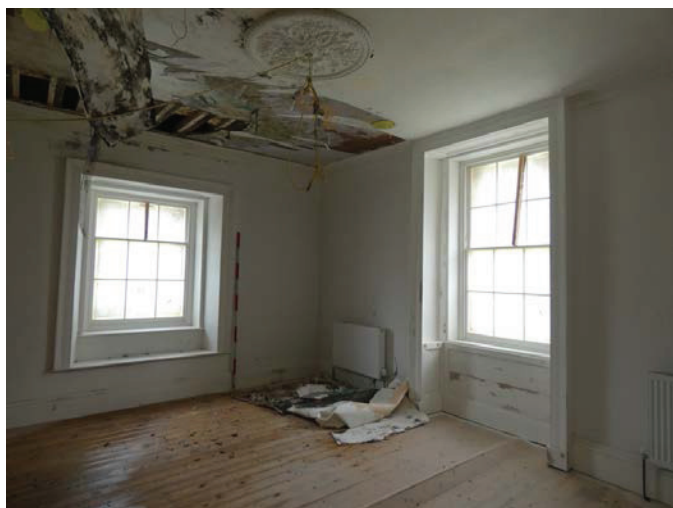
**Plate 120 (right):** Ceiling lantern in first floor Room 6, viewed from the north

4.3.30 **First floor Room 7:**



**Plate 121: Modern shower on the east side of first floor Room 7, viewed from the west**

4.3.31 **First floor Room 8:**



**Plate 122 (left): General view of first floor Room 8, from the south-west**



**Plate 123 (right): General view of first floor Room 8, from the south-east**



**Plate 124: Cornice detail in first floor Room 8, viewed from the north-west**

**4.3.32 *First floor Room 9:***



**Plate 125: General view of first floor Room 9, from the east**



4.3.33 **First floor Room 10:**



**Plate 126 (left): General view of first floor Room 10, from the north-west**

**Plate 127 (right): General view of first floor Room 10, from the south-east**

4.3.34 **First floor Room 11:**



**Plate 128 (left): The east elevation in first floor Room 11, viewed from the west**

**Plate 129 (right): Stairs in first floor Room 11, viewed from the north-west**



**Plate 130 (left):** Landing on the south side of first floor Room 11, viewed from the north



**Plate 131 (right):** Doorway to the west of first floor Room 11, viewed from the east



**Plate 132:** Original ceiling rose in first floor Room 11, viewed from the north-east



4.3.35 **First floor Room 12:**



**Plate 133 (left): Doorway in the north elevation of first floor Room 12, viewed from the south**



**Plate 134 (right): Window in the south elevation of first floor Room 12, viewed from the north**



**Plate 135 (left): The west elevation in first floor Room 12, viewed from the east**



**Plate 136 (right): Fireplace in the west elevation of first floor Room 12, viewed from the east**



4.3.36 **First floor Room 13:**

**Plate 137 (left): Stairs against the north side of first floor Room 13, viewed from the east**



**Plate 138 (right): Brickwork forming the south elevation of first floor Room 13, viewed from the north**



**Plate 139: Stair window in the west elevation of first floor Room 13, viewed from the east**

4.3.37 **Second floor Room 1:**



**Plate 140 (left): The north elevation of second floor Room 1, viewed from the south-east**



**Plate 141 (right): Fireplace in the west elevation of second floor Room 1, viewed from east**



**Plate 142: The south elevation in second floor Room 1, viewed from the north**



4.3.38 **Second floor Room 2:**

**Plate 143 (left):** The north elevation in second floor Room 2, viewed from the south-east



**Plate 144 (right):** The east elevation in second floor Room 2, viewed from the west



**Plate 145:** The south elevation in second floor Room 2, viewed from the north



4.3.39 **Second floor Room 3:**



**Plate 146 (left): The north elevation of second floor Room 3, viewed from the south-east**



**Plate 147 (right): The east elevation of second floor Room 3, viewed from the west**



**Plate 148 (left): Fireplace in the east elevation, second floor Room 3, viewed from the west**



**Plate 149 (right): The west elevation of second floor Room 3, viewed from the east**

4.3.40 **Second floor Room 4:**

**Plate 150 (left): Doorway in the north elevation of second floor Room 4, viewed from the south**

**Plate 151 (right): The east elevation of second floor Room 4, viewed from the west**



**Plate 152 (left): Fireplace in the east elevation of second floor Room 4, viewed from the west**

**Plate 153 (right): The south elevation of second floor Room 4, viewed from the north-east**



4.3.41 **Second floor Room 5:**



**Plate 154 (left): The north elevation in second floor Room 5, viewed from the south**

**Plate 155 (right): General view of second floor Room 5, from the north-west**

4.3.42 **Second floor Room 6:**



**Plate 156 (left): Doorway in the north elevation, second floor Room 6, viewed from the south**

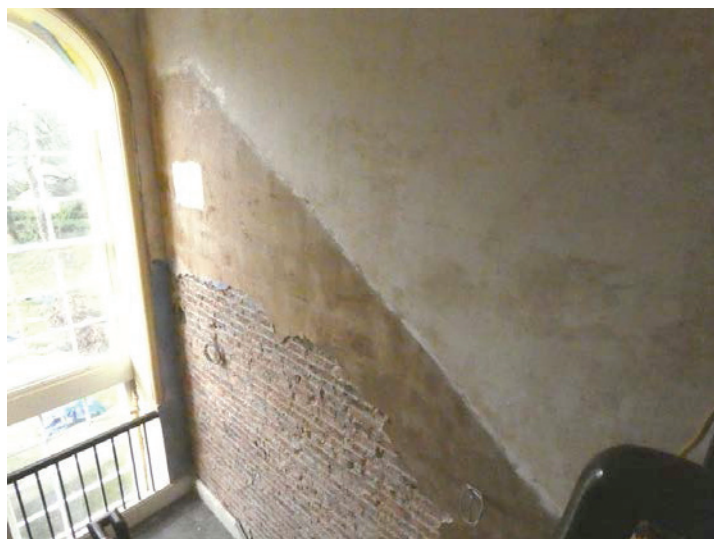
**Plate 157 (right): Fireplace in the west elevation, second floor Room 6, viewed from east**



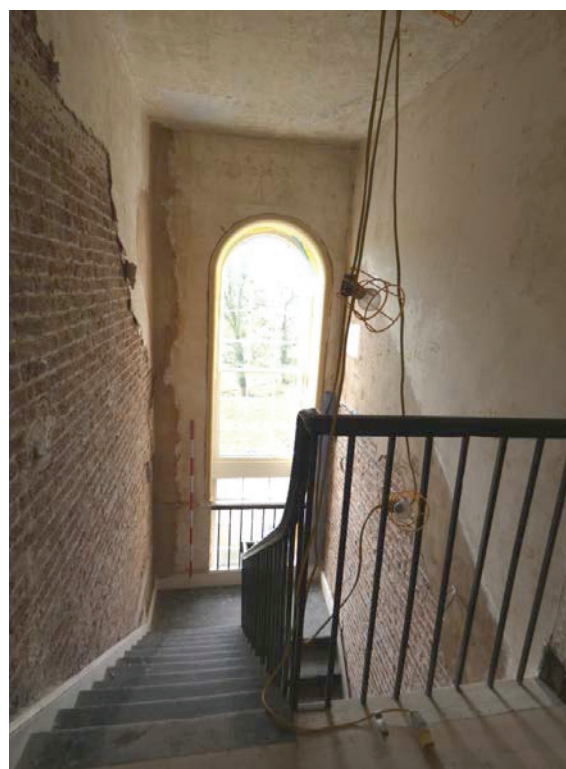


**Plate 158: The south elevation in second floor Room 6, viewed from the north-west**

**4.3.43 Second floor Room 7:**



**Plate 159 (left): Scar in the north elevation of second floor Room 7, viewed from the south-east**



**Plate 160 (right): Stairs at the west end of second floor Room 7, viewed from the east**



**Plate 161 (left): Archway mid-way along second floor Room 7, viewed from the east**

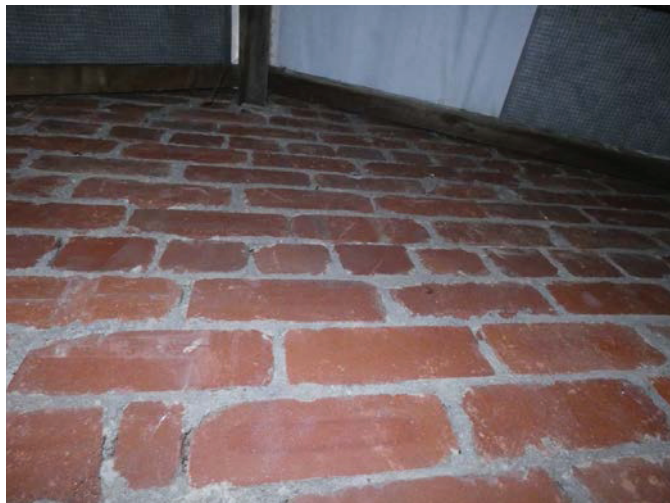
**Plate 162 (right): Archway at the east end of second floor Room 7, viewed from the west**

**4.3.44 Attic floor Room 1:**



**Plate 163 (left): The east wall of attic Room 1, viewed from the west**

**Plate 164 (right): The west end of attic Room 1, viewed from the east**

**4.3.45 Attic floor Room 2:**

**Plate 165 (left): The east end of attic Room 2, viewed from the west**

**Plate 166 (right): The west wall of attic Room 2, viewed from the east**



## 5. Discussion

### 5.1 Introduction

5.1.1 While it is not specifically the purpose of a photographic recording to provide a detailed discussion of the building's development, nor is this really feasible from the available information, it is possible to determine a basic phasing of the structure. In part this is due to the documentary evidence, which provides a relatively detailed understanding of the development of the building, but only from the early 19<sup>th</sup> century onwards. It is clear, however, that there is evidence for earlier activity on the site, although exactly what this comprised is unknown. The extensive recent modifications that the building has gone through also, to some extent, hinder interpretation as this has removed and disguised earlier fabric.

### 5.2 Phasing

5.2.1 **Introduction:** the documentary evidence combined with observations made during the building recording have allowed six phases of development to be determined. A comparison with the documentary evidence allows some relatively detailed dating of these although there is still considerable uncertainty about some of the details.

5.2.2 **Phase 1 (pre-c1800):** it is evident from various documentary sources that a property known as Ellel Hall existed on the site since at least the late 17<sup>th</sup> century. Its exact location is unclear but Yates' map of 1786 suggests it was further north, perhaps even on the opposite side of the current road, although this was more likely to have been rerouted to its current location as a result of the new house being built.

5.2.3 **Phase 2 (c1800):** the date of construction of the main house is uncertain. Architecturally it would easily fit within a late 18<sup>th</sup> to early 19<sup>th</sup> century date: there is a combination of elements that are very classical, such as the Palladian window in the west side of the main part of the south elevation, and more likely to be 18<sup>th</sup> century, while other simpler designs suggest a slightly later date, such the very plain staircase, which dates to about 1800 (Burton 2001, 41-42). The chimneypieces are more of a mix, with some very 18<sup>th</sup> century types (probably incorporating imported marble) and others that are more typical of the early 19<sup>th</sup> century (Burton and Porten 2000). The use of polished stone, some probably relatively local limestone, is reminiscent of the work of the Websters, who were based in Kendal, but there is no other specific reason to associate them with the construction of the house apart from the broad similarity with others that they were responsible for (Martin 2004). A likely date of c1800 indicates that it was constructed by Abraham Rawlinson, who certainly would have been wealthy enough. He had clearly acquired the original Ellel Hall by at least 1786, although is also said to have only recently come to live there in and he died in 1803, which suggests that the house was actually constructed shortly before 1799. Hewitson's assertion that it was built in 1700 is clearly wrong, or an unintended mistake for 1800.

5.2.4 **Phase 3 (early to mid-19<sup>th</sup> century):** the western wing is clearly a later addition, but it is apparent from the map evidence that it had been constructed by at least 1839. This was presumably constructed to provide additional service rooms, perhaps stabling and so forth, although there was clearly a further section running north from its west end that has since been demolished. It is conceivable that the large room on the first floor, with its relatively elaborate ceiling and tiled floor, was used for some social function such as a billiard room or ballroom, especially as it does not originally appear to have been directly linked to the ground floor.

5.2.5 **Phase 4 (late 19<sup>th</sup> century):** the map evidence shows that the east wing was not added until between 1845 and 1890. This too appears to have been to provide a very large function room on the ground floor and further bedrooms above. In addition, Hewitson states that the roof was altered in 1899 and this is evident within the building itself. Externally the stonework along the south and north elevations is different, suggesting some form of rebuilding, and in the attics the internal dividing walls are constructed from machine made bricks suggesting a date of late 19<sup>th</sup> or even early 20<sup>th</sup> century. In addition, it is noteworthy that the fireplaces in second floor Rooms 1, 3, 4, and 6 are surprisingly

elaborate in what would normally have been servant's quarters. It is possible, therefore, that the whole house was reduced by a whole floor level in height.

**5.2.6 Phase 5 (20<sup>th</sup> century):** it is apparent that the east wing underwent some extensive alterations in the 20<sup>th</sup> century. The map evidence suggests that the large bay window was not added until after c1900, although there is some discrepancy in the way this is depicted on later maps. While the evidence on site suggests that the whole wing was taken down and rebuilt – the concrete revealed under the foundations on the south-west corner for example (although this could have been more recent underpinning), internally it retains numerous original features, suggesting that it was actually re-clad in new stone set on new foundations. The photographic evidence shows that this was after 1931 as the windows in the north elevation have a different arrangement. In addition, the external staircase, which is cast concrete supported by an iron girder, was probably also added in the 20<sup>th</sup> century. It does not appear on any of the plans, which would suggest it was after 1931, but this could just be a result of the scale. Elsewhere in the building the most substantial alteration in this period was the creation of a new staircase in the west wing linking lower ground floor Room 10 and ground floor Room 11.

**5.2.7 Phase 6 (21<sup>st</sup> century):** most recently the building has undergone a considerable refurbishment, which has resulted in new ceilings replacing originals (with new identical ceiling roses added in many rooms) and re-plastering in virtually every room from the ground floor up. In addition, new panelling has been attached to the walls in ground floor Rooms 3, 7, and 15. In the lower ground floor areas of new studwork covering the walls and modern finishes were clearly left unfinished. Subsequent to these alterations being made the roof of the east wing suffered considerable water ingress (apparently due to an attempt to remove the lead roof) and this has led to the collapse of part of the ceiling (in ground floor Room 6) and damp penetration elsewhere. There also appears to have been some movement in the east side of the property, resulting in the floorboards springing out of position.

### 5.3 Significance

**5.3.1** Ellel Hall represents a significant structure in the local landscape; a large house built for a wealthy local merchant and industrialist in what would have been the most fashionable style at the turn of the 19<sup>th</sup> century. While it has retained some of its more significant architectural features, in particular the chimneypieces, it was extended early in its lifetime, disrupting the original broadly symmetrical square plan, and it has most recently been extensively altered internally. In addition, the gradual encroachment of the expanding settlement of Galgate in the 20<sup>th</sup> century has led to the loss of much of its former grounds and outbuildings to the north and left it somewhat hemmed in, when compared to its original, isolated position. Nevertheless, it remains of both architectural and historical interest in the wider region.

## 6. Bibliography

### 6.1 Primary and Cartographic Sources

CAC(B) BDX 83/28-29, 1799 *Reconveyance by Lease and Release*

Hennet, G, 1830 *A map of the County Palatine of Lancaster divided into hundreds and parishes from an accurate survey made in the years 1828 and 1829*

LRO AT/1, 1839 *Cockerham Tithe Map*

LRO DDHH 1/159, 1898 *Plan and Particulars of the Ellel Hall Estate*

LRO DDX 2743/MS 4179, 1800 *Copy of the Will of Abraham Rawlinson Late of Ellel Hall*

LRO DDX 2743/MS 4180, 1802 *Draft of the Will of Abraham Rawlinson of Ellel Hall*

LRO WRW/A/R22B/13, 1708 *Probate: William Charnock of Ellel Hall, Cockerham*

LRO WRW/A/R102/38, 1762 *Probate: Leonard Clarkson of Ellel Hall, Husbandman*

LRO WRW/A/R125c/12, 1803 *Probate: Abraham Rawlinson Esq of Ellel Hall*

LRO WRW/A/R125c/13, 1808 *Probate: Mary Rawlinson, Spinster of Great Queen Street, Formerly of Ellel Hall*

LRO WRW/A/R131/92, 1819 *Probate: John Ford Jnr Esq of Ellel Hall*

LRO WRW/A/R177/94, 1849 *Probate: Abraham Rawlinson For Esq of Ellel Hall*

LRO WRW/A/R177/95, 1849 *Probate: Elizabeth Ford, Widow, Ellel Hall*

LRO WRW/A/R187/114, 1851 *Probate: Robert Ford Esq of Ellel Hall*

Ordnance Survey, 1848 *Lancashire Sheet 34*, 1:10,560, surveyed in 1844-1845

Ordnance Survey, 1891 *Lancashire Sheet XXXIV.11*, 1:2,500, surveyed in 1890

Ordnance Survey, 1895 *Lancashire Sheet XXXIV*, 1:10,560, surveyed in 1844-1845, revised in 1890

Ordnance Survey, 1912 *Lancashire Sheet XXXIV.11*, 1:2,500, re-surveyed in 1890, revised in 1910

Ordnance Survey, 1919 *Lancashire Sheet XXXIV.SE*, 1:10,560, surveyed in 1844, revised in 1910

Yates, W, 1786 *The County Palatine of Lancaster. Surveyed by Willm. Yates. Engraved by Thos. Billinge*

### 6.2 Secondary Sources

Baines, E, 1825 *History, Directory and Gazetteer of the County Palatine of Lancaster*, **2**, Liverpool

Burton, N, 2001 *Georgian Stairs*, London

Burton, N, and Porten, L, 2000 *Georgian Chimneypieces*, London

Champness, J, 2005 *Thomas Harrison: Georgian Architect of Chester and Lancaster 1744-1829*, Lancaster

Chartered Institute for Archaeologists (CIfA), 2014a *Standards and Guidance for the Archaeological Investigation and Recording of Standing Buildings or Structures*, revised edn, Reading

CIfA, 2014b *Standard and Guidance for Archaeological Desk-Based Assessment*, revised edn, Reading

CIfA, 2014c *Standard and Guidance for the Creation, Compilation, Transfer and Deposition of Archaeological Archives*, revised edn, Reading

Countryside Commission, 1998 *Countryside Character, Volume 2: North West*, Cheltenham

Farrer, W, and Brownbill, J, 1914 *The Victoria History of the County of Lancaster*, **8**, London



Hewitson, A, 1900 *Northward*, Preston

Historic England, 2015 *Digital Image Capture and File Storage: Guidelines for Best Practice*, Swindon

Historic England, 2016 *Understanding Historic Buildings: A Guide to Good Recording Practice*, no location

Historic England, 2020 *Ellel Hall*, <https://historicengland.org.uk/listing/the-list/list-entry/1362484>

Martin, J (ed), 2004 *The Websters of Kendal: A North-Western Architectural Dynasty*, CWAAS record ser **17**, Kendal

Proctor & Birkbeck, 1931 *Illustrated Particulars with Plans and Conditions of Sale of the Historical, Freehold, Residential, Agricultural and Sporting Estate Known as the Ashton Hall Estate*

Roskell, RZ, 2007 *Galgate in Focus*, Blackpool

Townscape, 2019 *Townscape, 2019 Ellel Hall, Galgate, Lancaster: Heritage Statement & Impact Assessment*, unpubl rep

## Appendix 1: Listed Building Details

8/83 Ellel Hall

II

House, early-to-mid C19th. Squared sandstone with slate roof. A symmetrical composition of 2 storeys with attic and 3 bays, having plinth, string course and cornice. Windows sashed with glazing bars and plain reveals. Attic lit by 2 timber dormers. Door flanked by attached Tuscan columns with fluted necking, supporting moulded pediment. Gables have copings and chimneys. Interior has stair with stick balusters and swept mahogany handrail. Other rooms not inspected.

Listing NGR: SD4797055436

## Appendix 2: Census information 1841-1901

### 1841 Census (HO107/Piece 528/Folio 9/Page 9)

Place	Name	Age	Profession	Place of birth
Ellel Hall	Elizabeth Ford	50	Independent	Lancashire
	Abraham Ford	25	Independent	Lancashire
	Sarah Ford	23	Independent	Lancashire
	Robert Lawson	15	Oxford student	Not Lancashire
	Samuel Adamson	50	Collector	Not Lancashire
	Harriet Adamson	7	-	Not Lancashire
	William Hodeson	20	Male servant	Lancashire
	Elizabeth Richardson	20	Female servant	Not Lancashire
	Elizabeth Tighe	20	Female servant	Lancashire
	Isabella Huberd (?)	22	Female servant	Lancashire
	Thomas Taylor	25	Male servant	Lancashire
	Mary Taylor	60	Independent	Lancashire

### 1851 Census (HO107/Piece 2271/Folio 109/Page 25)

Place	Name	Age	Relationship to head	Profession	Place of birth
Ellel Hall	William Ford	34	Head	Landed proprietor	Lancashire, Cockerham
	James Walker	41	Brother in law	Fundholder &c	Middlesex, London
	Mary Elizabeth Walker	36	Sister	Fundholder &c	Lancashire, Cockerham
	Francis Augustus Walker	9	Nephew	Scholar	Middlesey(?), Southgate
	Maria Edith Walker	8	Niece	Scholar	Middlesey(?), Southgate
	Lydia Blanche Walker	5	Niece	Scholar	Middlesey(?), Southgate
	Samuel Adamson	61	Servant	Accountant	Alverthorpe, Yorkshire
	Jane Adamson	56	Servant	Cook & housekeeper	Ponsoby, Cumberland
	Harriet Adamson	17		Nursery governess	Manchester, Lancashire
	Henry Row	25	Servant	Foot man	Lancaster, Lancashire
	Agnes Rigg	33	Servant	Upper housemaid	Colton-in-Furness, Lancashire
	Mary Hine	24	Servant	Under housemaid	Lancaster, Lancashire
	Hannah Lucas	17	Servant	Kitchen maid	Cockerham, Lancashire

### 1861 Census (RG 9/Piece 3154/Folio 76/Page 3)

Place	Name	Age	Relationship to head	Profession	Place of birth
Ellel Hall	William Ford	44	Head	Magistrate/landed proprietor	Cockerham, Lancashire
	Louisa Ford	33	Wife	-	Manchester, Lancashire
	Thomas Geldart	31	Servant	Footman	Warton, Lancashire
	Ellen Holmes	49	Sevant	Cook	Lancaster, Lancashire
	Catherine Clayton	26	Servant	House maid	Kirkham, Lancashire
	Margaret J Douglas	17	Servant	Under house maid	Milnthorpe, Westmorland



**1871 Census** (RG 10/Piece 4228/Folio 76/Page 12)

Place	Name	Age	Relationship to head	Profession	Place of birth
Ellel Hall	William Ford	54	Head	JP DL land owner	Ellel, Lancashire
	Louisa Ford	43	Wife	-	Manchester, Lancashire
	Catherine Rabbit	28	Cook	Cook – domestic servant	Brandheath, Cheshire
	Jane Davie	19	Housemaid	Domestic servant	Scotland
	Elizabeth Gardner	17	Servant	Kitchen maid	Lancaster, Lancashire

**1881 Census** (RG 11/Piece 4261/Folio 75/Page 5)

Place	Name	Age	Relationship to head	Profession	Place of birth
Ellel Hall	William Ford	64	Head	JP Co Lancaster	Ellel, Lancashire
	Jane Mounsey	45	Servant	Cook (domestic)	Patterdale, Westmorland
	Mary Hall	17	Servant	Housemaid (domestic)	Bolton, Lancashire
	Sarah Jane Kilman	16	Servant	Kitchen maid (domestic)	Caton, Lancashire
	Thomas H Temple	29	Servant	Butler (domestic)	Crosthwaite, Cumberland

**1891 Census** (RG 12/Piece 3462/Folio 74/Page 16)

Place	Name	Age	Relationship to head	Profession	Place of birth
Ellel Hall	Mary A Taylor	48	Servant	Housekeeper (domestic servant)	Brantham, Suffolk
	Mary A Salisbury	30	Servant	Housemaid (domestic servant)	Garstang, Lancashire
	Jane Tyson	17	Servant	Kitchen maid (domestic servant)	Sedgwick, Westmorland

## Appendix 3: Photographic Register

Photo ID No.	Location	Description	Colour digital
01	Exterior	Front elevation	EH20_1_01
02	Exterior	Front elevation: doorway	EH20_1_02
03	Exterior	Front elevation: west tie rod	EH20_1_03
04	Exterior	Front elevation: east tie rod	EH20_1_04
05	Exterior	General view	EH20_1_05
06	Exterior	General view	EH20_1_06
07	Exterior	Front centre	EH20_1_07
08	Exterior	North elevation: east wing	EH20_1_08
09	Exterior	North elevation: east wing	EH20_1_09
10	Exterior	East elevation	EH20_1_10
11	Exterior	East elevation and footings	EH20_1_11
12	Exterior	East elevation: junction of new build	EH20_1_12
13	Exterior	South elevation: east end	EH20_1_13
14	Exterior	South elevation: junction	EH20_1_14
15	Exterior	South elevation: general view	EH20_1_15
16	Exterior	South elevation: centre	EH20_1_16
17	Exterior	South elevation: east end	EH20_1_17
18	Exterior	South elevation: east end	EH20_1_18
19	Exterior	South elevation: blocked windows	EH20_1_19
20	Exterior	South elevation: stairs	EH20_1_20
21	Exterior	South elevation: windows	EH20_1_21
22	Exterior	South elevation: stairs	EH20_1_22
23	Exterior	South elevation: stairs	EH20_1_23
24	Exterior	South elevation: Palladian door	EH20_1_24
25	Exterior	South elevation: west side	EH20_1_25
26	Exterior	South elevation: west wing	EH20_1_26
27	Exterior	South elevation: general view	EH20_1_27
28	Exterior	Trough in garden	EH20_1_28
29	LGF Outside	West elevation: south end	EH20_1_29
30	LGF Outside	West elevation: all	EH20_1_30
31	LGF Outside	North elevation: west wing	EH20_1_31
32	LGF Outside	West elevation	EH20_1_32
33	LGF Outside	West elevation: altered door	EH20_1_33
34	LGF Outside	Retaining wall	EH20_1_34
35	Retaining wall	Vaulted room below wall	EH20_1_35
36	LGF Outside	West wing: north elevation	EH20_1_36
37	LGF Room 10	Stairs	EH20_1_37
38	LGF Room 09	East end	EH20_1_38
39	LGF Room 09	West end	EH20_1_39
40	LGF Room 09	Garage door	EH20_1_40
41	LGF Room 08	West end	EH20_1_41
42	LGF Room 08	Beam	EH20_1_42
43	LGF Room 08	Doors to east	EH20_1_43
44	LGF Room 08	Stairs	EH20_1_44
45	LGF Room 08	Rounded door	EH20_1_45
46	LGF Room 08	Window	EH20_1_46
47	LGF Room 08	Stairs	EH20_1_47
48	LGF Room 05	Looking towards LGF Rooms 6 and 7: toilets	EH20_1_48
49	LGF Room 05	Door to south	EH20_1_49
50	LGF Room 04	North end	EH20_1_50
51	LGF Room 04	East end	EH20_1_51
52	LGF Room 04	South end	EH20_1_52
53	LGF Room 04	West end	EH20_1_53

Photo ID No.	Location	Description	Colour digital
54	LGF Room 04	Meat hooks	EH20_1_54
55	LGF Room 11	Safe doors	EH20_1_55
56	LGF Room 11	Safe door plate	EH20_1_56
57	LGF Room 03	General view	EH20_1_57
58	LGF Room 03	General view	EH20_1_58
59	LGF Room 03	South elevation	EH20_1_59
60	LGF Room 03	West elevation	EH20_1_60
61	LGF Room 02	North end	EH20_1_61
62	LGF Room 02	West elevation	EH20_1_62
63	LGF Room 02	East elevation: window	EH20_1_63
64	LGF Room 02	South elevation	EH20_1_64
65	LGF Room 01	North elevation	EH20_1_65
66	LGF Room 01	West elevation	EH20_1_66
67	LGF Room 01	West elevation: window	EH20_1_67
68	LGF Room 01	South door	EH20_1_68
69	LGF Room 01	Beams	EH20_1_69
70	GF Room 13	General view	EH20_1_70
71	GF Room 12	General view	EH20_1_71
72	GF Room 11	Stairs and window	EH20_1_72
73	GF Room 11	Window (horns)	EH20_1_73
74	GF Room 10	West end	EH20_1_74
75	GF Room 10	North elevation	EH20_1_75
76	GF Room 10	East end	EH20_1_76
77	GF Room 10	South elevation	EH20_1_77
78	GF Room 10	Ceiling	EH20_1_78
79	GF Room 10	Tiles	EH20_1_79
80	GF Room 09	West elevation	EH20_1_80
81	GF Room 09	South elevation	EH20_1_81
82	GF Room 09	East elevation	EH20_1_82
83	GF Room 09	Cornice	EH20_1_83
84	GF Room 06	North side	EH20_1_84
85	GF Room 06	South window	EH20_1_85
86	GF Room 06	West door	EH20_1_86
87	GF Room 14	Stairs	EH20_1_87
88	GF Room 14	Door to outside	EH20_1_88
89	GF Room 14	Stairs	EH20_1_89
90	GF Room 15	Fireplace	EH20_1_90
91	GF Room 15	West elevation	EH20_1_91
92	GF Room 15	North elevation	EH20_1_92
93	GF Room 15	East elevation	EH20_1_93
94	GF Room 15	Cornice / tie rod	EH20_1_94
95	GF Room 15	Ceiling rose	EH20_1_95
96	GF Room 09	Ceiling rose	EH20_1_96
97	GF Room 01	Door to north	EH20_1_97
98	GF Room 01	Stairs	EH20_1_98
99	GF Room 01	Arches	EH20_1_99
100	GF Room 01	Door	EH20_1_100
101	GF Room 01	Arch	EH20_1_101
102	GF Room 01	Ceiling rose	EH20_1_102
103	GF Room 01	Cornice	EH20_1_103
104	GF Room 02	Arch	EH20_1_104
105	GF Room 02	Window	EH20_1_105
106	GF Room 02	Door to north	EH20_1_106
107	GF Room 02	Arch	EH20_1_107
108	GF Room 07	West elevation	EH20_1_108
109	GF Room 07	Fireplace	EH20_1_109

Client: Mr and Mrs Smith

© Greenlane Archaeology Ltd, February 2020



Photo ID No.	Location	Description	Colour digital
110	GF Room 07	South elevation	EH20_1_110
111	GF Room 07	West elevation	EH20_1_111
112	GF Room 07	North elevation	EH20_1_112
113	GF Room 03	South elevation	EH20_1_113
114	GF Room 03	North elevation	EH20_1_114
115	GF Room 03	East elevation	EH20_1_115
116	GF Room 04	General view	EH20_1_116
117	GF Room 04	Window	EH20_1_117
118	GF Room 05	Window	EH20_1_118
119	GF Room 05	Window	EH20_1_119
120	GF Room 06	Fireplace	EH20_1_120
121	GF Room 06	Window	EH20_1_121
122	GF Room 06	West elevation	EH20_1_122
123	GF Room 06	Fallen ceiling rose	EH20_1_123
124	GF Room 06	Scar of ceiling rose	EH20_1_124
125	GF Room 06	Cornice	EH20_1_125
126	FF Room 11	Stairs	EH20_1_126
127	FF Room 11	Ceiling rose	EH20_1_127
128	FF Room 11	Landing	EH20_1_128
129	FF Room 11	Arch	EH20_1_129
130	FF Room 11	Arch	EH20_1_130
131	FF Room 01	West elevation	EH20_1_131
132	FF Room 01	Fireplace	EH20_1_132
133	FF Room 01	North elevation	EH20_1_133
134	FF Room 01	General view	EH20_1_134
135	FF Room 01	Ceiling rose	EH20_1_135
136	FF Room 01	Cornice	EH20_1_136
137	FF Room 12	West elevation	EH20_1_137
138	FF Room 12	Fireplace	EH20_1_138
139	FF Room 12	Door	EH20_1_139
140	FF Room 12	Window	EH20_1_140
141	FF Room 13	Stairs	EH20_1_141
142	FF Room 13	Brick	EH20_1_142
143	FF Room 13	Stair light	EH20_1_143
144	FF Room 02	Window seat	EH20_1_144
145	FF Room 04	Window	EH20_1_145
146	FF Room 04	Window and alcove	EH20_1_146
147	FF Room 04	South elevation	EH20_1_147
148	FF Room 06	Blocked door	EH20_1_148
149	FF Room 10	General view	EH20_1_149
150	FF Room 10	General view	EH20_1_150
151	FF Room 06	Panels	EH20_1_151
152	FF Room 07	Shower	EH20_1_152
153	FF Room 06	Blocked door	EH20_1_153
154	FF Room 06	Lantern	EH20_1_154
155	FF Room 09	General view	EH20_1_155
156	FF Room 08	General view	EH20_1_156
157	FF Room 08	Cornice	EH20_1_157
158	FF Room 08	General view	EH20_1_158
159	SF Room 07	Stairs	EH20_1_159
160	SF Room 01	Fireplace	EH20_1_160
161	SF Room 01	North elevation	EH20_1_161
162	SF Room 01	South elevation	EH20_1_162
163	SF Room 06	Fireplace	EH20_1_163
164	SF Room 06	North elevation	EH20_1_164
165	SF Room 06	Door	EH20_1_165

Photo ID No.	Location	Description	Colour digital
166	SF Room 02	East elevation	EH20_1_166
167	SF Room 02	North elevation	EH20_1_167
168	SF Room 02	South elevation	EH20_1_168
169	SF Room 05	North elevation	EH20_1_169
170	SF Room 05	South and east elevation	EH20_1_170
171	SF Room 03	General view	EH20_1_171
172	SF Room 03	Fireplace	EH20_1_172
173	SF Room 03	North elevation	EH20_1_173
174	SF Room 03	West elevation	EH20_1_174
175	SF Room 04	East elevation	EH20_1_175
176	SF Room 04	Fireplace	EH20_1_176
177	SF Room 04	South elevation	EH20_1_177
178	SF Room 04	Door	EH20_1_178
179	SF Room 07	Arch	EH20_1_179
180	SF Room 07	Arch	EH20_1_180
181	AF Room 01	Roof space: west end	EH20_1_181
182	AF Room 01	Roof space: west end	EH20_1_182
183	AF Room 02	Roof space: east end	EH20_1_183
184	AF Room 02	Roof space: east end	EH20_1_184
185	SF Room 07	North elevation: scar on wall	EH20_1_185

## Appendix 4: Archive Index

<b>Project name:</b>	Ellel Hall, Galgate, Lancaster, Lancashire: Archaeological Building Recording		
<b>Project Code:</b>	G1450	<b>Site Code:</b>	EH20
<b>Description</b>	<b>Material</b>	<b>Size</b>	<b>Quantity</b>
Report	Paper, comb-bound	A4 with A3 fold-outs	84 pages
Photo record sheet	Paper	A4	3
Annotated drawings	Paper	A4	9
Digital archive index	Paper	A4	1
Digital archive	DVD	-	1