



85 FLEET STREET
London
EC4

City of London

An archaeological watching brief report

January 2006



MUSEUM OF LONDON

Archaeology Service

85 FLEET STREET
London
EC1

City of London

An archaeological watching brief report

National Grid Reference: 531520 181138

Project Manager
Author
Graphics

Nick Bateman
Portia Askew
Kenneth Lymer

Museum of London Archaeology Service
© Museum of London 2006
Mortimer Wheeler House, 46 Eagle Wharf Road, London N1
7ED
tel 020 7410 2200 fax 020 7410 2201
email molas@molas.org.uk

Table Of Contents

1	Introduction	3
1.1	Site background	3
1.2	The proposed development	3
1.3	Planning background	3
1.4	Results of the watching brief	3
2	Conclusions and publication	4
3	Bibliography	4
List of Illustrations		
	Fig 1 Site location	1
	Fig 2 Trench location	2

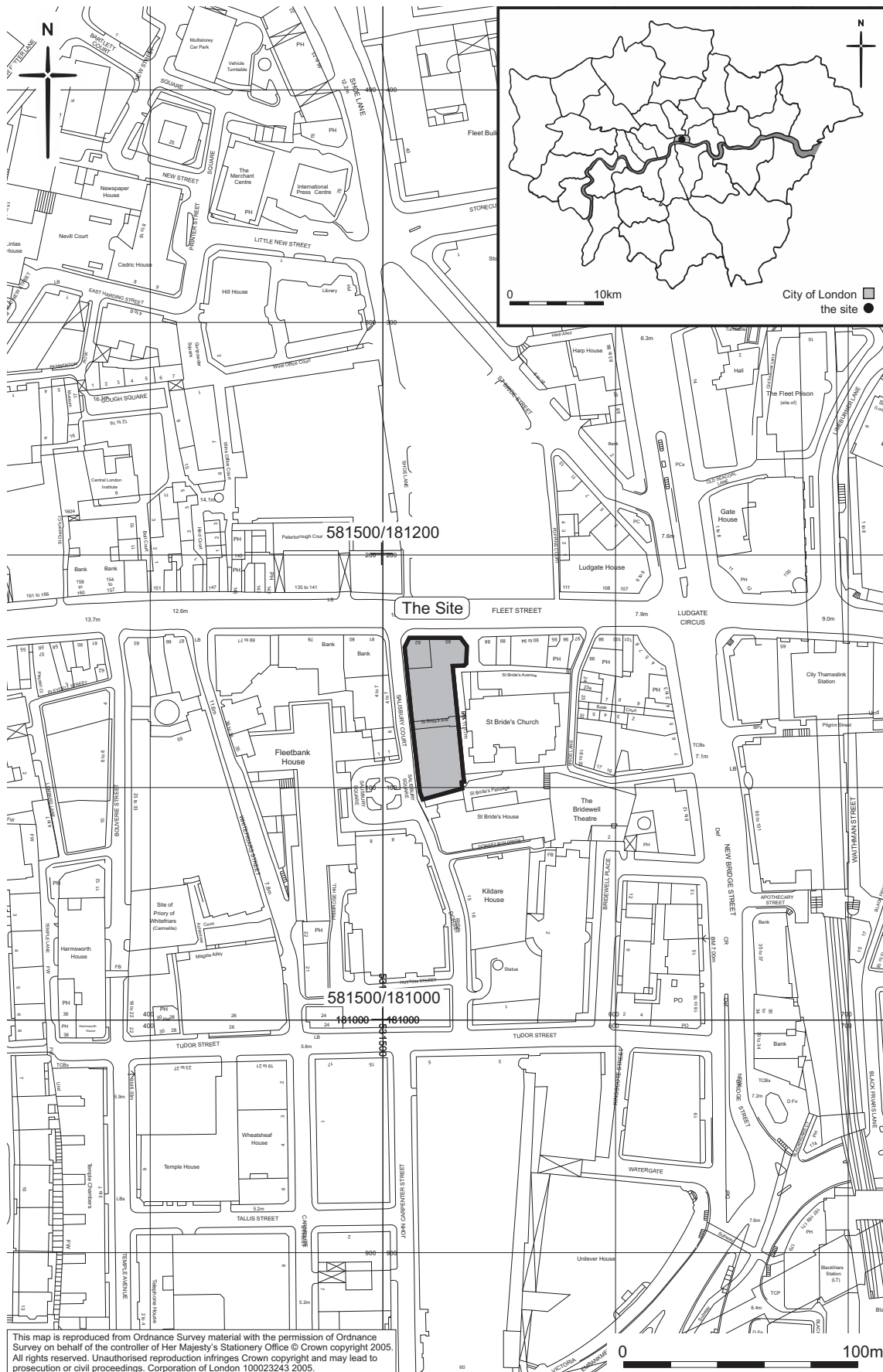
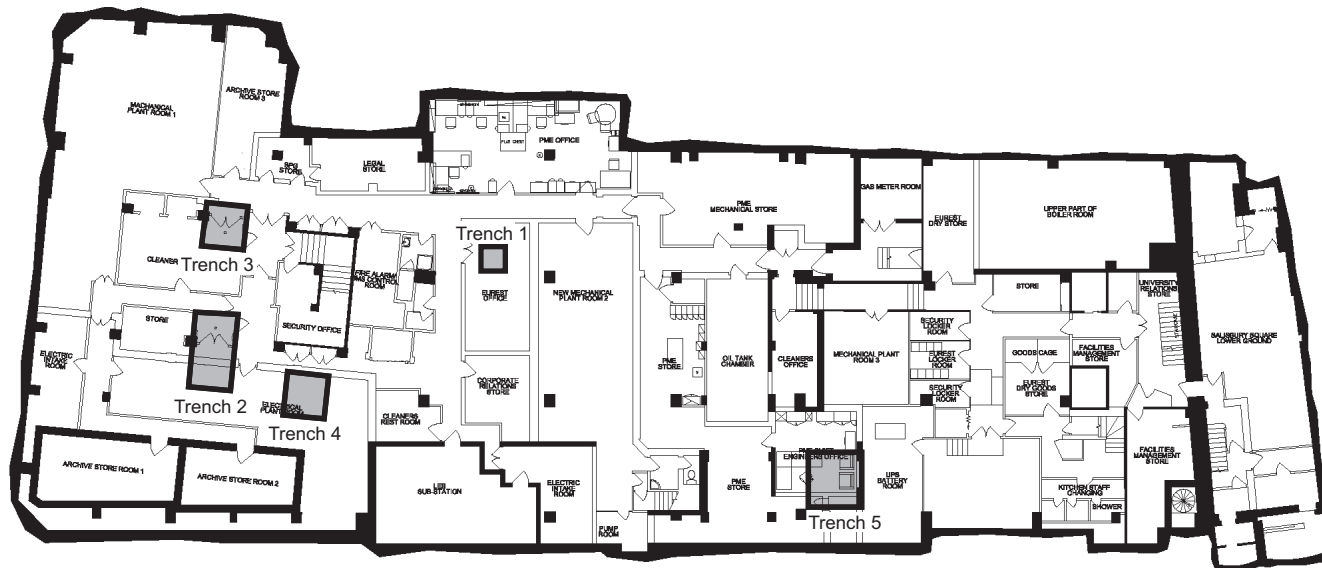
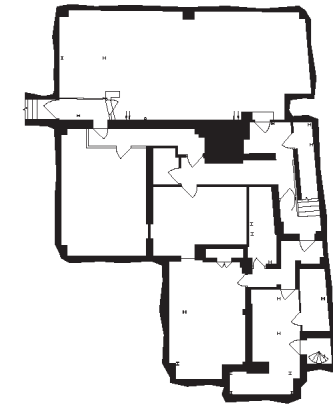


Fig 1 Site location



Existing Basement Plan



Existing Sub-Basement

2

Fig 2 Trench location

1 Introduction

1.1 Site background

The site of 85 Fleet Street lies on the south side of Fleet Street and is bounded on the west by Salisbury Court, on the south by St Bride's Passage, on the east by St Bride's Church and on the north by Fleet Street. The Ordnance Survey National Grid reference is 531520 181138 (Fig 1).

Following assessment of the site (MoLAS 2005) an archaeological watching brief was carried out in accordance with the Method Statement (MoLAS Sept 2005) and the MoLAS Archaeological Site Manual (MoLAS, 1994).

The work was commissioned from MoLAS by DP9 on behalf of the client.

1.2 The proposed development

The proposed works comprise the refurbishment of the present office building involving the construction of new lifts with required lift pits. The greater part of the existing slab (at a height of 7.13m OD) is being retained but an area towards the centre of the site where the slab is presently at a higher level is being reduced to the same common level (by *c* 1m)

1.3 Planning background

The watching brief was carried out to fulfil a condition on planning consent.

1.4 Results of the watching brief

In total, five separate interventions (trenches) were made (Fig 2). These have been numbered 1 to 5 consecutively. There follows a brief description of the trenches

Trench 1

A mass concrete area measuring *c* 12m long by 5m wide and *c* 1m higher than the rest of the site was reduced to the same level as the rest of the basement. A 2m by 2m by 1.30m deep test pit was excavated adjacent to the north-eastern side of the concrete mass into the basement floor. Natural gravel was located 1.17m below the basement floor level at a height of 5.96m OD, beneath a 1.17m thick concrete slab

Trench 2

In the area of proposed lift pit 2, a 2m by 2m by 1m deep trench was excavated, revealing mass concrete with rebar.

Trench 3

In the area of proposed lift pit 3, a 900mm by 600mm by 600mm deep trench was excavated, revealing mass concrete with rebar.

Trench 4

In the area of proposed lift pit 4, a 1m by 800mm by 600mm deep trench was excavated, revealing mass concrete with rebar.

Trench 5

In the area of proposed lift pit 5, a 2m by 600 by 1.20m deep trench was excavated, revealing mass concrete with rebar.

2 Conclusions and publication

A short note on the results of the watching brief will appear in the annual round up of the *London Archaeologist*

3 Bibliography

Corporation of London, 2002 *Unitary Development Plan*

Corporation of London Department of Planning and Transportation, 2004 *Planning Advice Note 3: Archaeology in the City of London, Archaeology Guidance*, London

MoLAS, 2005 *85 Fleet Street, archaeological impact assessment*

MoLAS, Sept 2005, *85 Fleet Street, Method Statement for an archaeological excavation and watching brief*

Museum of London, 1994 *Archaeological Site Manual 3rd edition*

Museum of London, 2002 *A research framework for London archaeology 2002*

OASIS ID: molas1-12642

Project details

Project name	85 Fleet Street, EC4
Short description of the project	Five trenches were monitored. Four contained only concrete while the fifth revealed natural gravel below the ground slab. No archaeological remains were observed.
Project dates	Start: 29-11-2005 End: 14-12-2005
Previous/future work	No / No
Any associated project reference codes	FLX05 - Sitecode
Type of project	Field evaluation
Site status	None
Current Land use	Industry and Commerce 2 - Offices
Monument type	NONE None
Significant Finds	NONE None
Methods & techniques	""Test Pits""
Development type	Building refurbishment/repairs/restoration
Prompt	Planning condition
Position in the planning process	After full determination (eg. As a condition)

Project location

Country	England
Site location	GREATER LONDON CITY OF LONDON CITY OF LONDON 85 Fleet Street
Postcode	EC4
Study area	50.00 Square metres
Site coordinates	TQ 31520 81138 51.5133407579 -0.104432773847 51 30 48 N 000 06 15 W Point
Height OD / Depth	Min: 5.96m Max: 5.96m

Project creators

Name of Organisation	MoLAS
Project brief originator	Local Authority Archaeologist and/or Planning Authority/advisory body

Project design originator	MoLAS
Project director/manager	Nick Bateman
Project supervisor	Portia Askew
Type of sponsor/funding body	Developer
Name of sponsor/funding body	DP9

Project archives

Physical Archive Exists?	No
Digital Archive recipient	LAARC
Digital Archive ID	FLX05
Digital Contents	"Stratigraphic","Survey"
Digital Media available	"Images vector","Text"
Paper Archive recipient	LAARC
Paper Archive ID	FLX05
Paper Contents	"Stratigraphic","Survey"
Paper Media available	"Microfilm","Plan","Report","Survey ","Unpublished Text"

Project bibliography

1

Publication type	Grey literature (unpublished document/manuscript)
Title	85 Fleet Street, London EC4: An archaeological watching brief report
Author(s)/Editor(s)	Askew, P.
Date	2006
Issuer or publisher	MoLAS
Place of issue or publication	London
Description	Unpublished client report

Entered by	Vince Gardiner (vgardiner@mola.org.uk)
Entered on	20 November 2014