



Northamptonshire
County Council

Northamptonshire Archaeology

Archaeological Watching Brief
at Layham Quarry
Hadleigh, Suffolk
August-September 2007



Tim Upson-Smith

October 2007

Report 07/158

Northamptonshire Archaeology

2 Bolton House
Wootton Hall Park

Northampton NN4 8BE

t. 01604 700493 f. 01604 702822

e. sparry@northamptonshire.gov.uk

w. www.northantsarchaeology.co.uk



OASIS REPORT FORM

PROJECT DETAILS		
Project name	Layham Quarry	
Short description (250 words maximum)	An archaeological watching brief was undertaken by Northamptonshire Archaeology during the topsoil and subsoil strip in advance of gravel extraction at Layham Quarry, Hadleigh, Suffolk. The watching brief demonstrated that within this part of the landscape were ditches forming part of the post-medieval field system which appeared to have been backfilled in the modern era, with the introduction of large scale farming methods.	
Project type (eg DBA, evaluation etc)	Watching brief	
Site status (none, NT, SAM etc)	none	
Previous work (SMR numbers etc)	Watching brief 1999-2006	
Current Land use	Agricultural/quarry	
Future work (yes, no, unknown)	yes	
Monument type/ period	Post-medieval	
Significant finds (artefact type and period)	none	
PROJECT LOCATION		
County	Suffolk	
Site address (including postcode)	Layham Quarry, Hadleigh, Suffolk	
Study area (sq.m or ha)	9.5 ha	
OS Easting & Northing (use grid sq. letter code)	TM 0103 3944	
Height OD	56m AOD	
PROJECT CREATORS		
Organisation	Northamptonshire Archaeology	
Project brief originator	Edward Martin, Suffolk County Council, Archaeological Services Conservation Team	
Project Design originator	CgMs	
Director/Supervisor	Tim Upson-Smith	
Project Manager	Adam Yates	
Sponsor or funding body	Brett Group	
PROJECT DATE		
Start date	28/08/07	
End date	06/09/07	
ARCHIVES	Location (Accession no.)	Content (eg pottery, animal bone etc)
Physical	Northamptonshire Archaeology	
Paper	Northamptonshire Archaeology	
Digital	Northamptonshire Archaeology	
BIBLIOGRAPHY		
	unpublished client report (NA report)	
Title	Archaeological Watching Brief at Layham Quarry, Hadleigh, Suffolk August-September 2007 Report 07/158	
Serial title & volume	07/158	
Author(s)	Tim Upson-Smith	
Page numbers	10	
Date	October 2007	

STAFF

Project Manager: Adam Yates BA, AIFA

Fieldwork: Tim Upson-Smith BA, PGDip

Text: Tim Upson-Smith

Illustrations: Jacqueline Harding HND, BA

QUALITY CONTROL

	Print name	Signed	Date
Verified by	Adam Yates		
Checked by	Pat Chapman		
Approved by	Andy Chapman		

Contents

1	INTRODUCTION	1
1.1	Background	1
1.2	Topography and geology	1
1.3	Historical and archaeological background	1
2	AIMS AND OBJECTIVES	2
3	THE ARCHAEOLOGICAL EVIDENCE	2
3.1	Post-medieval field boundaries	3
4	CONCLUSION	3
	BIBLIOGRAPHY	3
	PLATES	4

Figures

Fig 1: Site location

Fig 2: General site plan

Plates

Plate 1: North-south aligned ditch with remnant Oak field boundary

Plate 2: Pollarded Oak tree

Frontispiece: General view of the soil strip

ARCHAEOLOGICAL WATCHING BRIEF
AT LAYHAM QUARRY, HADLEIGH, SUFFOLK
AUGUST-SEPTEMBER 2007
REPORT 07/158

Planning Consent Number: B/98/0334

Site: Layham Quarry, Hadleigh, Suffolk

NGR: TM 0103 3944

Abstract

An archaeological watching brief was undertaken by Northamptonshire Archaeology during the topsoil and subsoil strip in advance of gravel extraction at Layham Quarry, Hadleigh, Suffolk. The watching brief demonstrated that within this part of the landscape were ditches forming part of the post-medieval field system which appeared to have been backfilled in the modern era, with the introduction of large scale farming methods.

1 INTRODUCTION

1.1 Background

Planning Consent (B/98/0334) has been granted by Suffolk County Council for an extension at Layham Quarry (NGR: TM 0103 3944, Fig 1). As a condition of the permission an archaeological watching brief was required following a brief issued by Edward Martin, Suffolk County Council, Archaeological Services Conservation Team, SCCASCT (Martin 2007). A specification was prepared by CgMs Consulting (CgMs 8717/07/01).

Northamptonshire Archaeology were commissioned by CgMs Consulting to undertake a watching brief for the quarry extension area.

1.2 Topography and geology

The quarry extension area (c9.5 ha) is located in the southern part of Layham parish, extending into the northern part of Shelley parish. The central part of the site is located on a spur of glacial sand and gravel (<http://www.bgs.ac.uk/geoindex/index.htm>) at c56m AOD gently sloping eastwards to c54m AOD.

1.3 Historical and archaeological background

A desk-based archaeological assessment of the site was undertaken by CgMs Consulting (formally JSAC) in November 1997 (JSAC/296/97/001). This report concluded that there were no known archaeological sites within 1km of the proposed quarry extension area. An earlier brief for archaeological evaluation from Suffolk County Council Archaeological Service

Conservation Team (SCCASCT) suggested that from place name evidence (Popes Green Farm and Popes Green Lane) there might have been a medieval settlement within the area (Martin 1998).

In March 1999 a fieldwalking survey was carried out by JSAC now CgMs Consulting on the area of the proposed quarry extension (JSAC259/99/002). Only ten finds were recovered during the survey, including a single flint scraper and post-medieval pottery, the rest of the finds being ceramic tile. A watching brief was carried out by JSAC and Northamptonshire Archaeology between 1999 and 2006.

A summary report of the fieldwork between 1999 and 2006 was prepared by Northamptonshire Archaeology (Upson-Smith 2007). This fieldwork demonstrated that the landscape had been utilised from the Neolithic to the present day. The Neolithic period was represented by a single serrated blade from a later ditch. The earliest feature was a single Beaker period pit. There was more intensive activity in the late Bronze Age, with a scatter of pits containing pottery and loomweights. The consistency of form and fabrics suggest that this activity was short lived. The prehistoric activity was located within the central part of the quarry on land that was slightly higher than its surroundings.

Located within the northern part of the site were a series of ditches forming parts of a field system attributed to the Romano-British period by the excavator, although there was no direct dating evidence.

2 AIMS AND OBJECTIVES

The objectives of the archaeological watching brief as outlined in the brief from SCCASCT (Martin 2007) were:

...to enable the identification and evaluation of potentially, significant archaeological features or deposits

...to identify, excavate and record features and deposits of lesser archaeological significance.

The academic objectives were to be centred upon the high potential for the site to produce evidence for settlement and funerary activities from prehistoric through to medieval times.

3 THE ARCHAEOLOGICAL EVIDENCE

A watching brief was maintained over a period of two weeks in August and September 2007 during the topsoil and subsoil strips in advance of the quarrying (Fig 2).

3.1 Post-medieval field boundaries

Two post-medieval ditches, which appear on the 1839 Tithe map (JSAC 1997 map 2), were observed during the watching brief. The ditches were still present on the 1938 Ordnance Survey six-inch County series provisional edition (JSAC 1997 map 5). These ditches were backfilled relatively recently, perhaps consolidating the agricultural landscape into a smaller number of larger fields. The line of the backfilled boundary ditches was also indicated by four surviving oak trees and a maple (Plate 1). The southernmost oak tree showed evidence of having been pollarded (Plate 2).

4 CONCLUSION

Two post-medieval ditches were observed during the watching brief, forming part of a wider post-medieval field system, elements of which had been observed in previous phases of watching brief at the quarry. Archaeological and cartographic evidence would suggest that much of the field system was backfilled in the modern era, with the introduction of large scale farming methods.

BIBLIOGRAPHY

CgMs 2007 *Specification for Archaeological Watching Brief land at Layham Quarry, Hadleigh, Suffolk* CgMs 8717/07/01

Martin, E, 1998 *Brief and Specification for an Archaeological Evaluation*, Suffolk County Council Archaeological Service-Conservation Team

Martin, E, 2007 *Brief and Specification for Archaeological Monitoring (continuous observation of soil-stripping operations)*, Suffolk County Council Archaeological Service-Conservation Team

JSAC November 1997 *A Desk-based Archaeological Assessment at Layham Quarry, Hadleigh, Suffolk*, John Samuels Archaeological Consultancy JSAC/296/97/001

JSAC March 1999 *A Report on Fieldwalking at the P29 Quarry Extension, Layham Quarry, Hadleigh, Suffolk*, John Samuels Archaeological Consultancy JSAC259/99/002

Upson-Smith T, 2007 *A Summary of the Archaeological watching brief at Layham Quarry Hadleigh, Suffolk 1999-2006*, Northamptonshire Archaeology 07/23

Northamptonshire Archaeology

a service of Northamptonshire County Council

October 2007

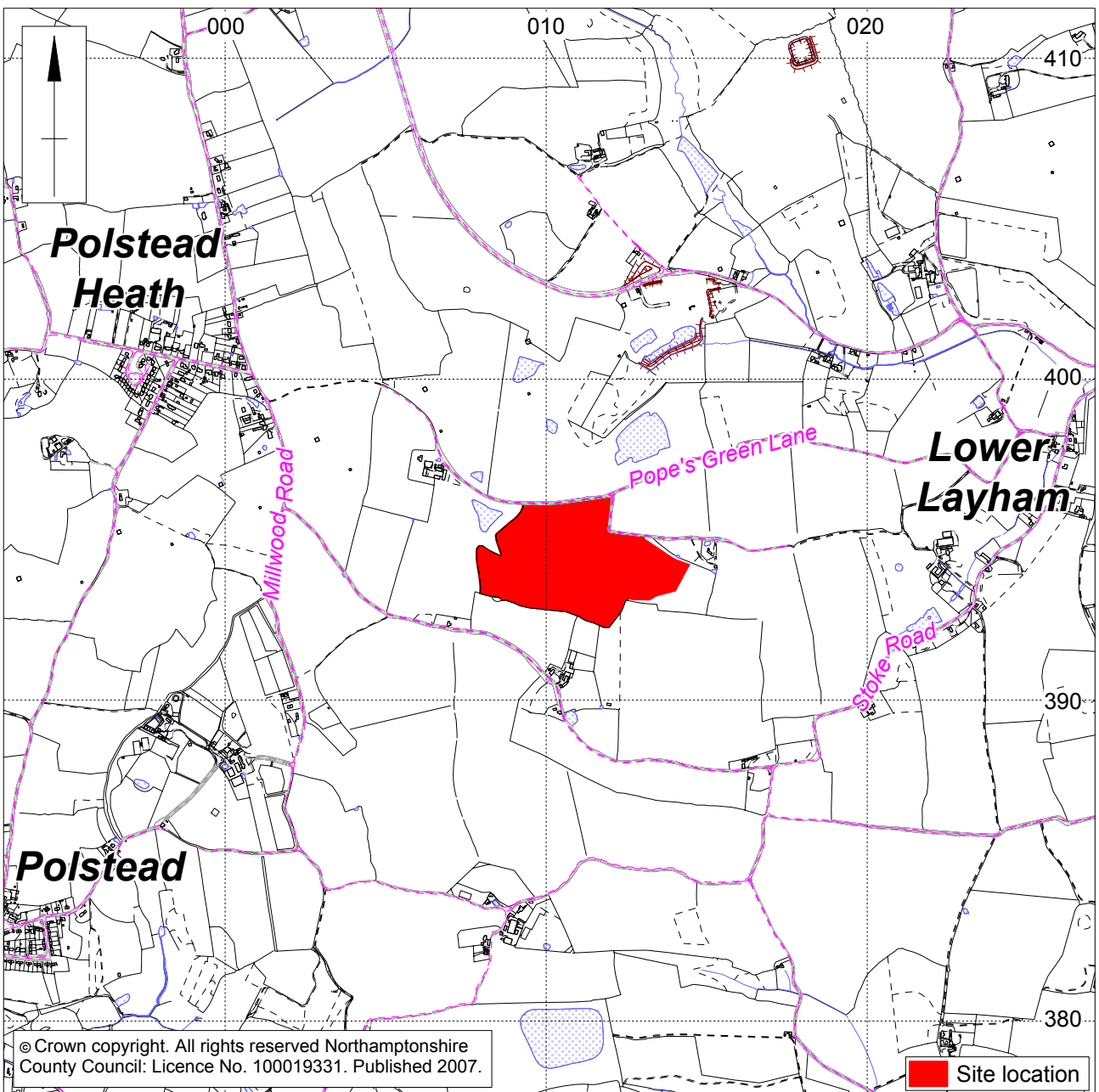
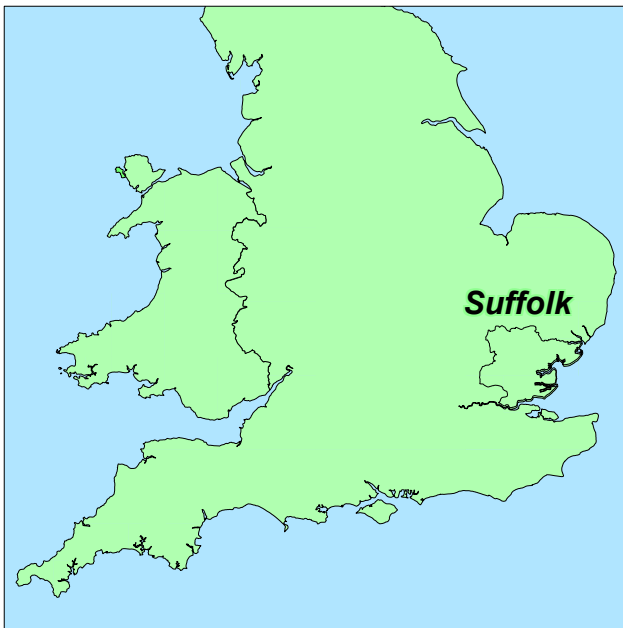
PLATES



Plate 1: North-south aligned ditch with remnant Oak field boundary

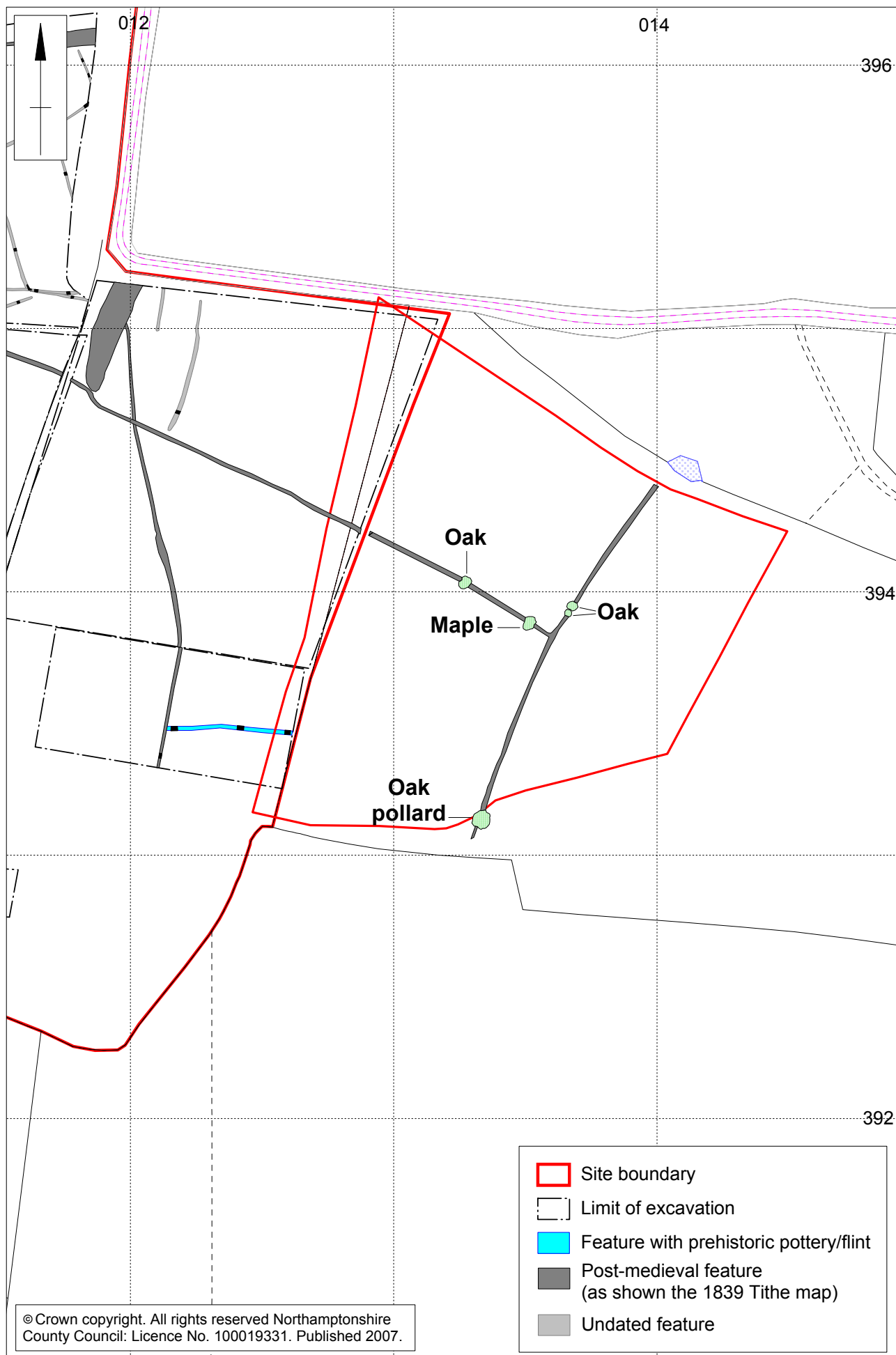


Plate 2: Pollarded Oak tree



Scale 1:5000

Site Location Fig 1



Scale 1:2000