



Northamptonshire Archaeology

Archaeological Watching Brief at 2 Pincross, Priddy, Somerset November 2010



Northamptonshire Archaeology

2 Bolton House
Wootton Hall Park
Northampton NN4 8BE
t. 01604 700493 f. 01604 702822
e. sparry@northamptonshire.gov.uk
w. www.northantsarchaeology.co.uk



Northamptonshire
County Council

Ian Meadows

Report 11/43

February 2011



**NORTHAMPTONSHIRE COUNTY COUNCIL
NORTHAMPTONSHIRE ARCHAEOLOGY
FEBRUARY 2011**

**ARCHAEOLOGICAL WATCHING BRIEF
AT 2 PINCROSS, PRIDDY
SOMERSET
NOVEMBER 2010**

STAFF

Project Manager Ian Meadows BA
Text Ian Meadows
Illustrations Amir Bassir BSc

QUALITY CONTROL

	Print name	Signed	Date
Checked by	Pat Chapman		
Verified by			
Approved by	Andy Chapman		

OASIS REPORT FORM

PROJECT DETAILS		
Project name	Pincross Priddy	
Short description (250 words maximum)	Northamptonshire Archaeology carried out an archaeological watching brief on the excavation of the foundations for a new house being erected at 2 Pincross, Priddy. The foundations were excavated by a mechanical excavator and revealed a sequence comprising natural clay sealed by a previously double dug garden soil which was sealed by a recent spread of aggregate to form a temporary surface. Dateable objects recovered from the garden soils comprised nineteenth century clay pipe stems and transfer printed wares. A single small sherd of possibly eighteenth century pottery was also recovered.	
Project type (eg DBA, evaluation etc)	Watching brief	
Site status (none, NT, SAM etc)	None	
Previous work (SMR numbers etc)	None	
Current Land use	Garden	
Future work (yes, no, unknown)		
Monument type/ period		
Significant finds (artefact type and period)	None	
PROJECT LOCATION		
County	Somerset	
Site address (including postcode)	2 Pincross, Priddy, Somerset	
Study area (sq.m or ha)	0.0502 ha	
OS Easting & Northing (use grid sq. letter code)	ST 5280 5085	
Height OD		
PROJECT CREATORS		
Organisation	Northamptonshire Archaeology	
Project brief originator	N/A	
Project Design originator	Ian Meadows	
Director/Supervisor	Ian Meadows	
Project Manager	Ian Meadows	
Sponsor or funding body		
PROJECT DATE		
Start date	3 November 2010	
End date	3 November 2010	
ARCHIVES	Location (Accession no.)	Content (eg pottery, animal bone etc)
Physical	None	
Paper		
Digital	None	

Contents

1	INTRODUCTION
1.1	Background
1.2	The study area
2	METHODOLOGY
3	THE WATCHING BRIEF
4	DISCUSSION
	BIBLIOGRPAHY

Tables

Table 1: Sites listed on the Historic Environment Record (HER) within 500m of development

Figures

Fig 1: Site location

Fig 2: Plot of HER records adjacent to 2 Pincross

Fig 3: 1885 Ordnance survey map

Fig 4: 1903 Ordnance survey map

Fig 5: Plan of building footprint

Fig 6: Building footprint with recorded stratigraphic depths

Plates

Front cover: General view of site

Back cover: View of open foundation trench

**ARCHAEOLOGICAL WATCHING BRIEF AT
2 PINCROSS, PRIDDY, SOMERSET
NOVEMBER 2010**

Abstract

Northamptonshire Archaeology carried out an archaeological watching brief on the excavation of the foundations for a new house being erected at 2 Pincross, Priddy. The foundations were excavated by a mechanical excavator and revealed a sequence comprising natural clay sealed by a previously double dug garden soil, which was sealed by a recent spread of aggregate to form a temporary surface. Dateable objects recovered from the garden soils comprised 19th-century clay pipe stems and transfer printed wares. A single small sherd of possibly 18th-century pottery was also recovered.

1 INTRODUCTION

1.1 Background

Northamptonshire Archaeology were commissioned by Dean Roberts to carry out an archaeological watching brief at 2 Pincross, Priddy (Fig 1) (Centred on NGR ST 5280 5085). The site lies in an area considered to be of High Archaeological Potential and the watching brief was required by the Somerset Archaeological advisor as mitigation to record any surviving archaeological levels. A written scheme of investigation was prepared by Northamptonshire Archaeology and submitted to him for approval before works began. Priddy parish contains extensive evidence for early prehistoric monuments including Bronze Age round barrows and the complex of henges (Priddy Rings). There is also extensive multi-period evidence in the area for metal ore extraction and processing.

1.2 The study area

The study area was relatively level comprising part of the former garden to the east of 2 Pincross, fronting onto the Wells Road. At the time of observation a thin spread of aggregate had been made across the site to provide a temporary surface.

HER Information

As part of the project and in order to provide a context for the present works a search of the readily available information for the site was made. This comprised an on-line check of the HER and also examining the historic maps available on line from the Somerset Records Office.

No sites were known either within or immediately adjacent to the site. All known remains within 500m are tabulated below (Table 12 and Fig 2).

Table 1: Sites listed on the Historic Environment Record (HER) within 500m of development

HER No	NGR	Site name	Description	Period
19072	ST 5239 5094	Ridge and furrow west of Priddy	Fragmentary block of ridge and furrow	Medieval/ Post-medieval
19076	ST 5247 5083	Quarry pit west of Priddy	Limestone quarry pit 16m x 21m identified by Lidar	Post-medieval/ modern
19078	ST 5252 5129	Strip field boundaries, W of Priddy Green	Narrow banks and ditches possibly part of a system of agricultural land divisions	Medieval/ Post-medieval
19080	ST 5265 5130	Hollow way, N of Priddy Green	Holloway traceable for over 100m possibly forming part of a back lane	Medieval/ Post-medieval
19081	ST 5261 5126	Quarry Pit N of Priddy Green	Amorphous limestone quarry pit 41m x 18m	Post-medieval/ modern
19084	ST 5248 5130	Dew Pond NW of Priddy Green	Possible dew pond 10m x 9m seen on an AP	Post-medieval
19091	ST 5286 5113	Shrunken settlement, Priddy	House platforms and hollow way along with other earthworks	Medieval/ Post-medieval
19092	ST 5325 5117	Ridge and furrow E of Priddy	Six fragmentary blocks of ridge and furrow	Medieval/ Post-medieval
19093	ST 5325 5088	Ridge and furrow, E of Priddy	Fragmentary block of ridge and furrow	Medieval/ Post-medieval
19094	ST 5310 5083	Ridge and furrow, E of Priddy	Fragmentary block of ridge and furrow	Medieval/ Post-medieval
19095	ST 5291 5070	Ridge and furrow E of Priddy	Fragmentary block of ridge and furrow	Medieval/post medieval
19097	ST 5295 5105	Quarries, E of Priddy	A group of limestone quarries and pits covering an area of 93m 72m	Post-medieval/ modern
19100	ST 5299 5066	Quarries E of Priddy	A group of six limestone quarry pits covering an area 108m x 86m	Post-medieval/ modern

2 PINCROSS, PRIDDY

HER No	NGR	Site name	Description	Period
19101	ST 5311 5058	Spoil heaps E of Priddy	Four spoilheaps possibly derived from limestone extraction covering an area 147m x 96m	Post-medieval/modern
19111	ST 5309 5122	Quarries E of Priddy	Two limestone quarries 17m x 14 and 16m x 14	Post-medieval/modern
23950	ST 5311 5130	Roman finds Swildans Hole	A coarseware pot and saddle quern fragment	Roman
23968	ST 5300 5055	Barrow W of Lower Pits Farm	Earthwork bowl barrow, 40' diameter 2.5' high	Bronze Age
23969	ST 5303 5053	Barrow W of Lower Pits Farm	Earthwork bowl barrow, 60' diameter 3.5' high	Bronze age
23970	ST 5307 5050	Barrow W of Lower Pits Farm	Bowl barrow, 30' diameter 1.5' high	Bronze Age
24206	ST 5285 5046	Lime kiln S of Priddy	Limekiln shown on 1884 and 1903 OS but not on the c1840 tithe map	Post-medieval
24206	ST 5285 5046	Lime kiln S of Priddy	Limekiln shown on 1884 and 1903 OS but not on the c1840 tithe map	Post-medieval
24207	ST 5302 5067	Lime kiln S of Priddy	Limekiln shown on 1884 and 1903 OS (on this edition it is marked as old limekiln) but not on the c1840 tithe map	Post-medieval
25032	ST 5190 5135 to ST 5230 5108	Enclosure or boundary banks	Round topped bank	Medieval/Post-medieval
25823	ST 5285 5105	AP marks St Cuthbert Farm	Crop marks and banks possibly field boundaries overlying a circular enclosure 60m across	Medieval/Post-medieval
25962	ST 524 512	Palaeolithic flints W of Priddy	Several flints of upper Palaeolithic character	Palaeolithic
26195	ST 532 513	Lithic scatter	31 lithic flakes (no tools)	Prehistoric
29706	ST 529 513	Magnetometer survey NE Priddy Church	Survey of prns 19087, 23946, 27310 and 29708	
29707	ST 530 513	Resistivity survey NE Priddy Church	Survey of prn 23946 roman building	

The Somerset Record Office has made the first and second editions of the Ordnance Survey 1:10,560 available on line. These were printed in 1885 and 1903 respectively (Fig 3 & 4). These maps show the development area divided by a boundary running north-west to south-east, the site itself being defined on its south-west side by the Wells road and on the northeast by a curving access off that road which runs to the rear of number 2 Pincross effectively leaving it on an island. No other details of activities within or immediately adjacent to the plot could be observed on these maps.

2 METHODOLOGY

The methodology, described in a written scheme of investigation (NA 2010) and agreed with Steve Membrey, the Planning Archaeologist for Somerset County Council, was that groundworks associated with the foundations and new services would be observed by an archaeologist (Fig 5 & 6). The foundation trenches and service runs were to be excavated by mechanical excavator under archaeological supervision and once excavated the opportunity provided to allow for the examination of the exposed stratigraphy.

3 THE WATCHING BRIEF

The foundations were excavated on 3 November 2010, the most western using a mini digger and the others using a larger tracked excavator. Spoil was stacked on site and removed by tractor and trailer.

The foundations were excavated to a depth of 1.0m and about 0.7m wide and in each trench the stratigraphic sequence was the same. A basal natural clay with limestone [4], with the amounts of limestone varying slightly, with individual pieces of sub angular shape generally up to 0.2m across. This deposit probably represented the product of decay of the underlying limestone as in places a few larger stones up to 0.3m across were present in the base of the foundation.

Above the natural clay with stones was a mid grey-brown clay loam [3], between 0.14-0.28m thick, containing coal flecks along with isolated grits and very isolated small limestone pieces up to 0.1m across. From within this horizon, sherds of transfer printed wares and 19th or early 20th-century clay pipe stem were recovered. Sealing this was a homogeneous fine slightly clay dark grey-brown loam [2] between 0.15-0.25m thick. This

deposit contained isolated pieces of coal clinker up to 10mm along with transfer printed wares and 19th or 20th-century clay pipe stems.

The two layers of loamy soil were probably the remain so of a previously double-dug garden soil which had been carefully cleared of any stones and only small amounts of domestic rubbish had been incorporated in it. The reason for the difference in hue is probably that the soil ceased to be double dug at some stage although the upper horizon was still cultivated and enriched with humic material leaving the lower level to slightly dehumify.

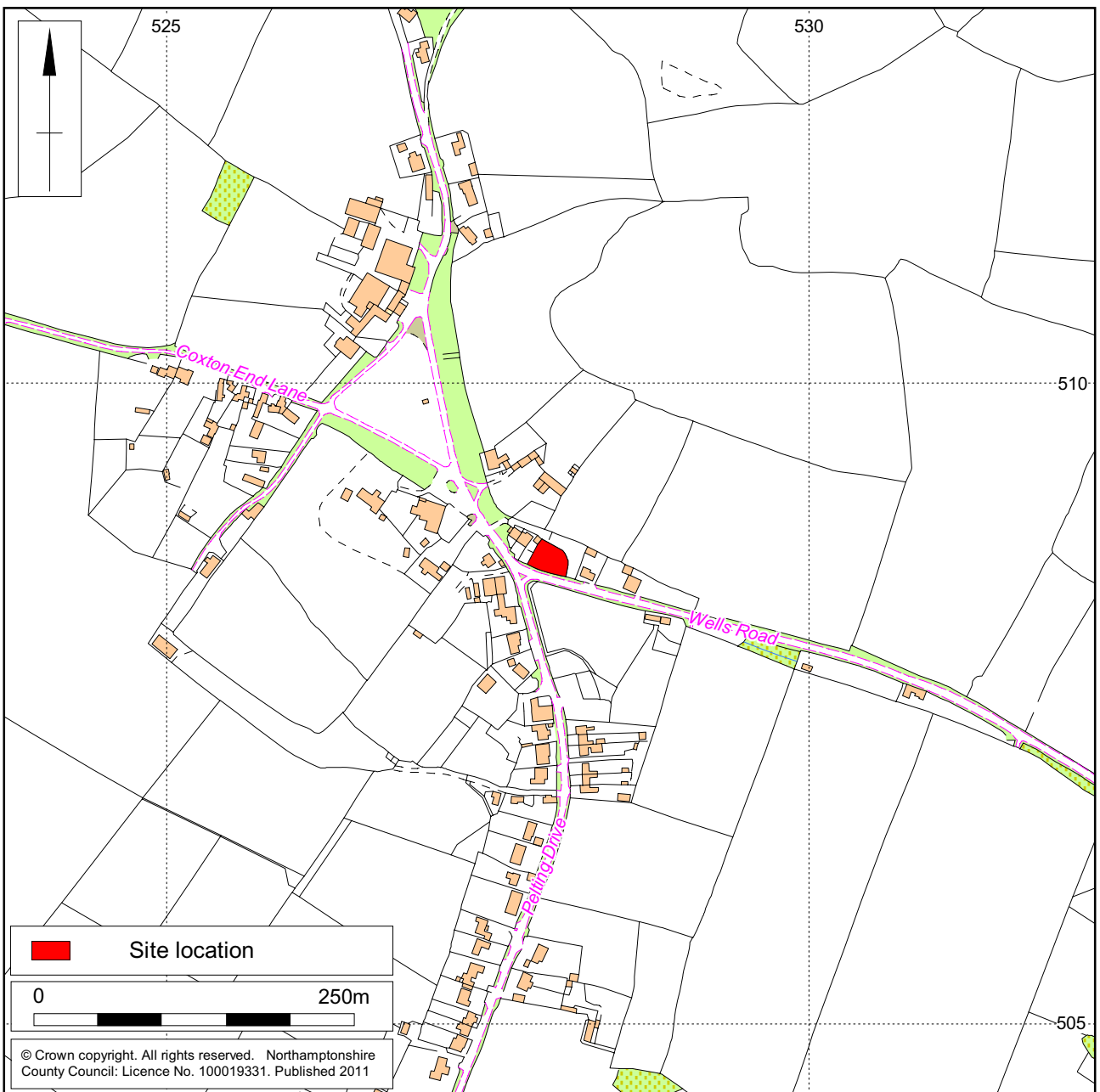
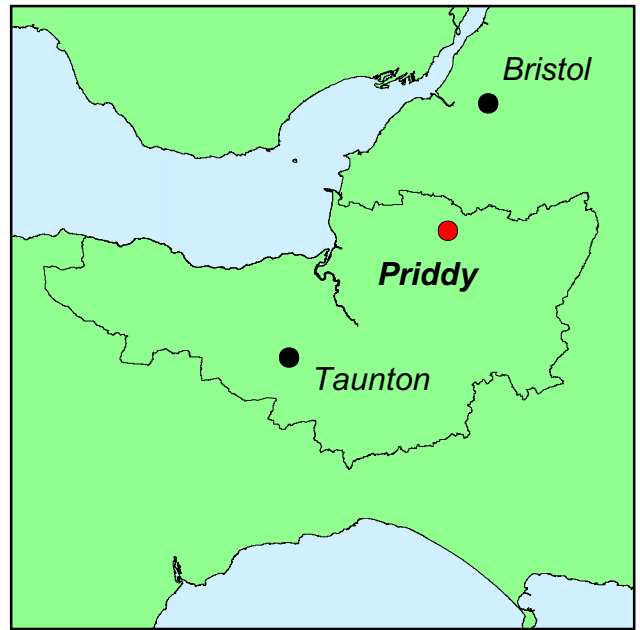
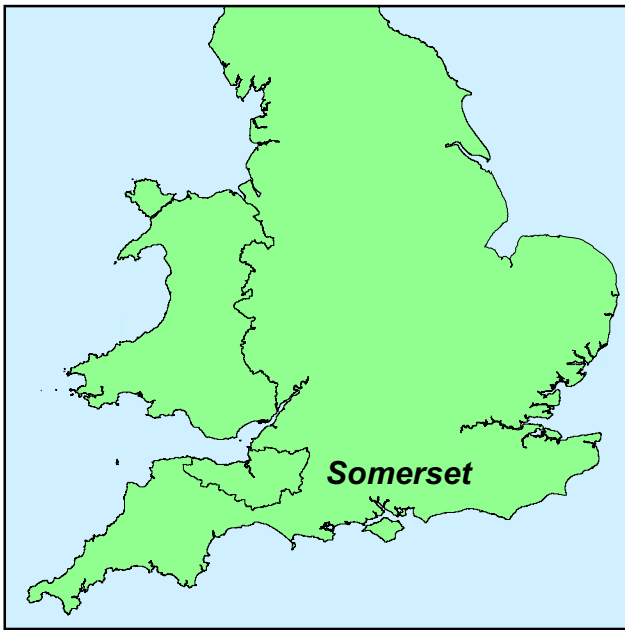
Sealing the entire site was a thin deposit between 0.03-0.15m thick of crushed limestone aggregate that had been applied to make a temporary working surface.

4 DISCUSSION

The watching brief observed no evidence prehistoric activity or Roman or later metal ore extraction or processing. The revealed stratigraphy was completely in accordance with a double-dug garden soil which had ceased to be so rigorously cultivated producing a dehumification of the lower levels of the soil. The finds recovered were all of a type that would reflect 19th or early 20th-century garden cultivation, into which limited amounts of domestic rubbish had been incorporated along with some of the ash from a coal fire.

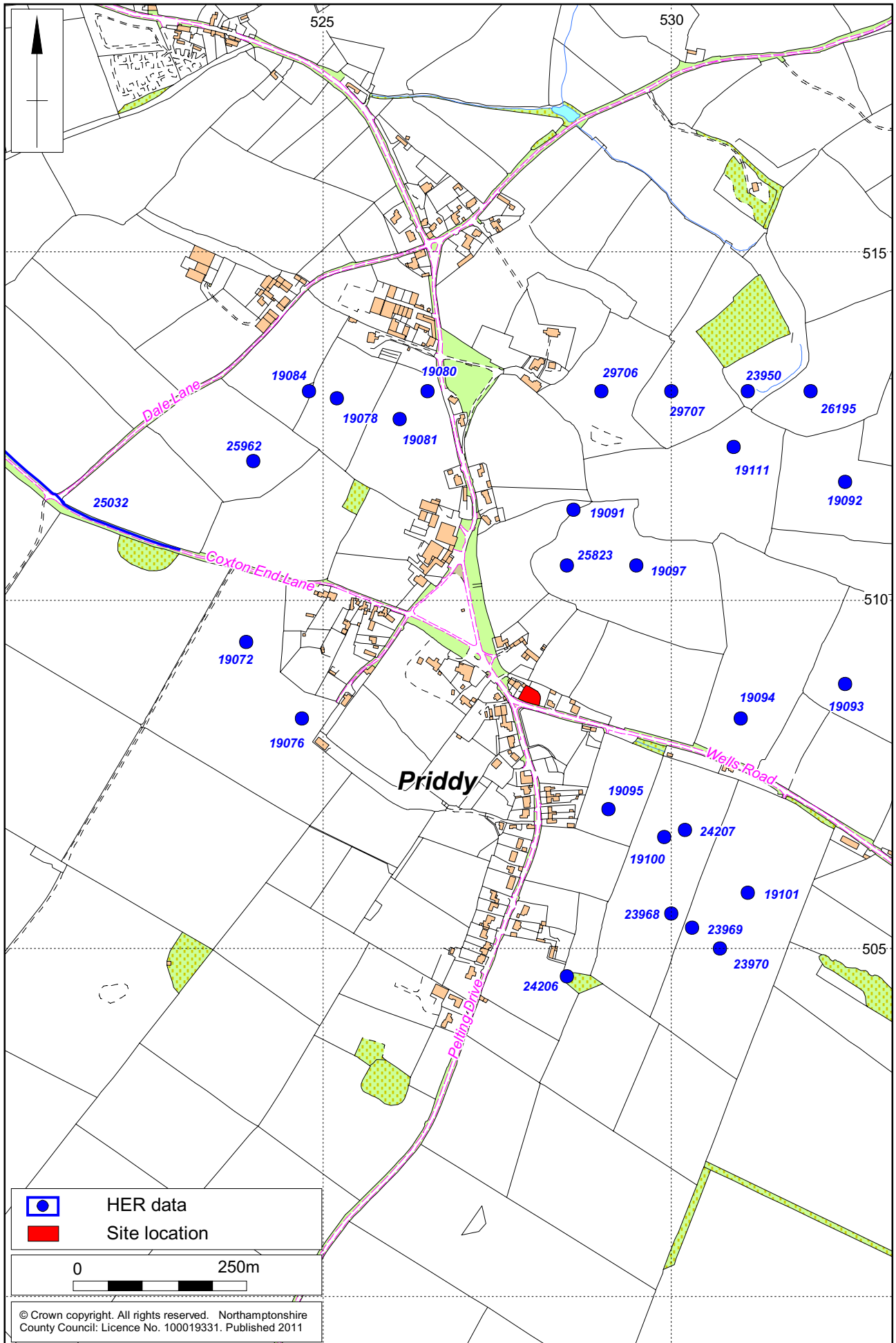
BIBLIOGRAPHY

NA 2010 *Specification for an archaeological watching brief 2 Pincross, Priddy, Somerset*, Northamptonshire Archaeology

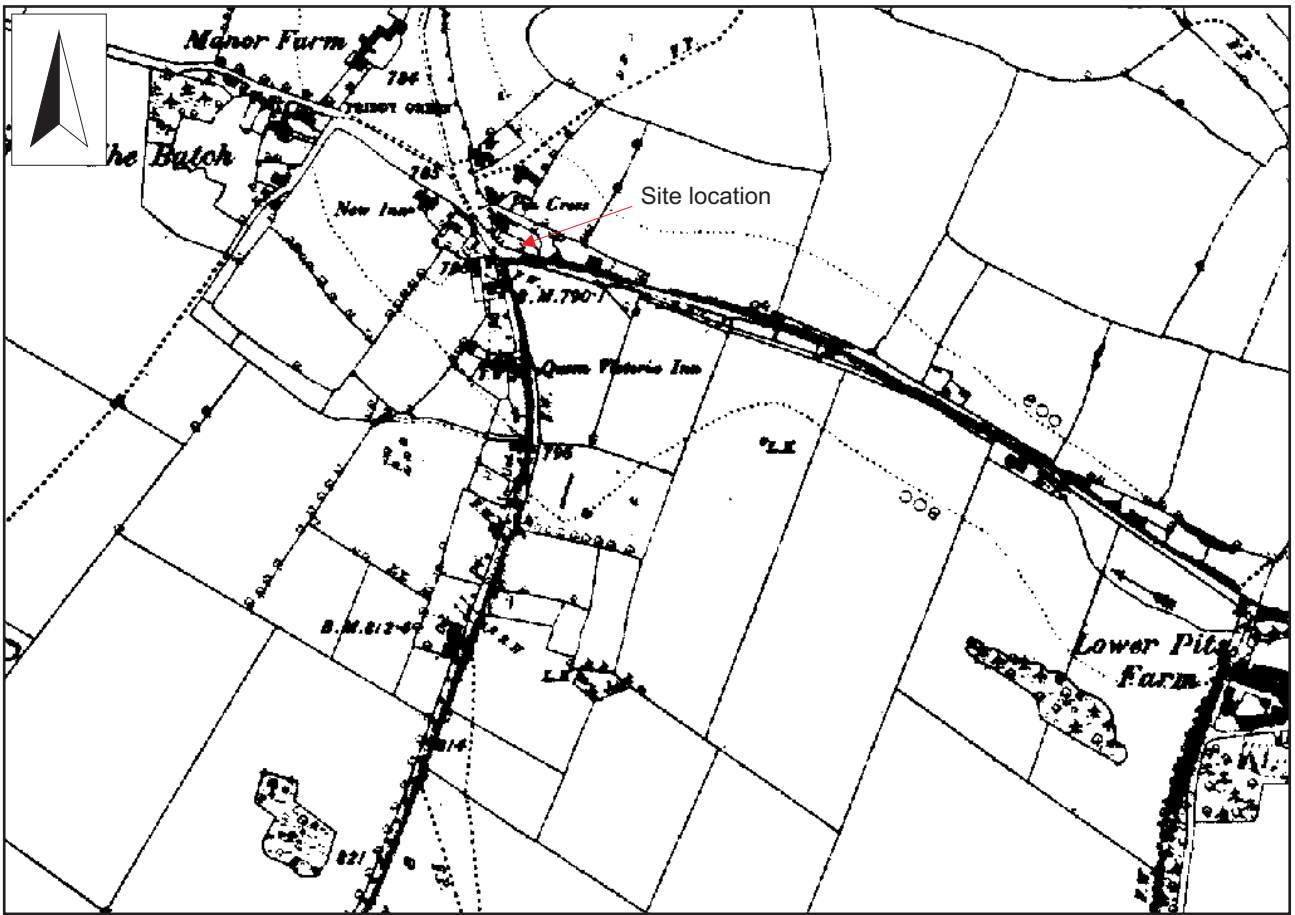


Scale 1:5000

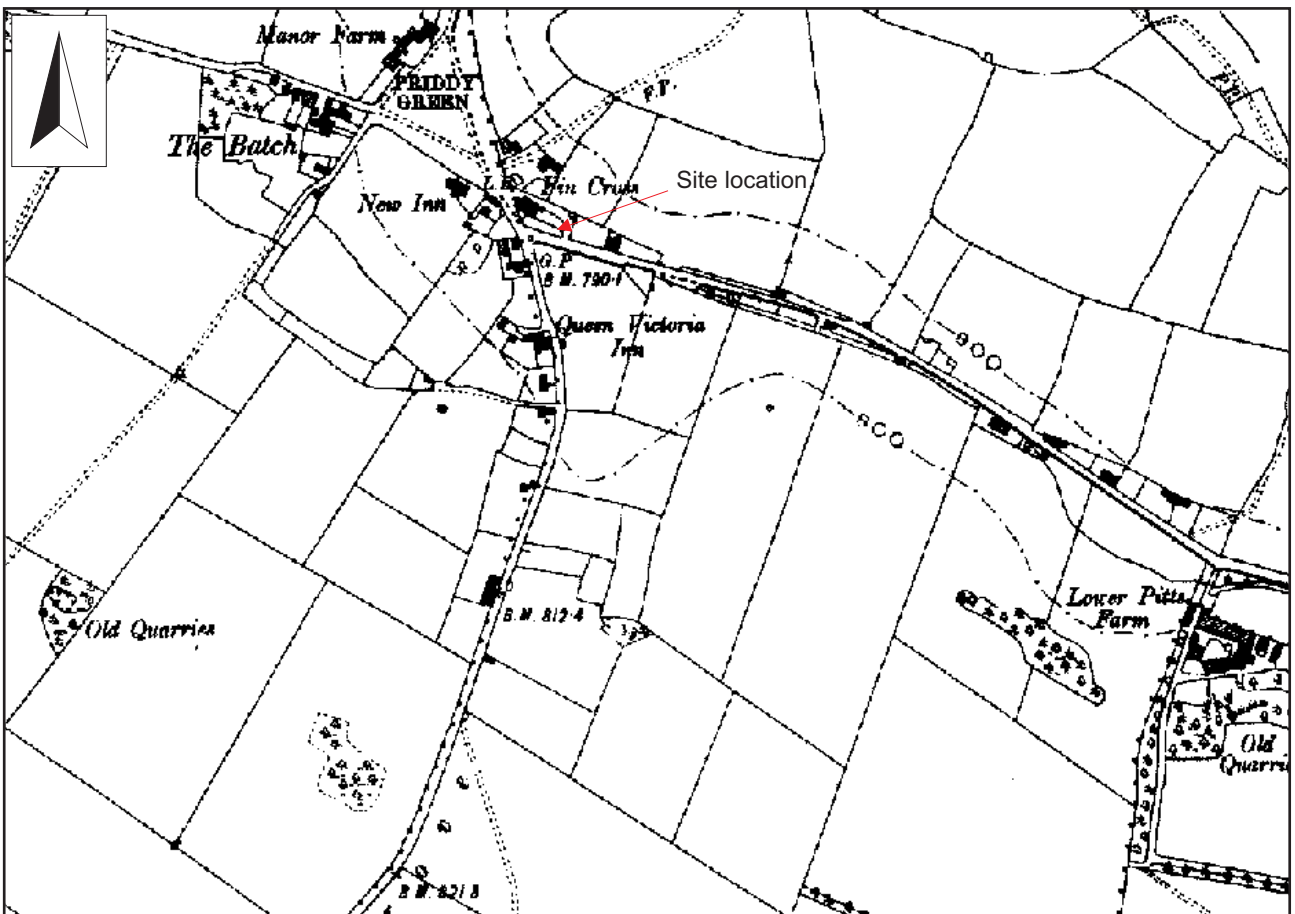
Site location Fig 1



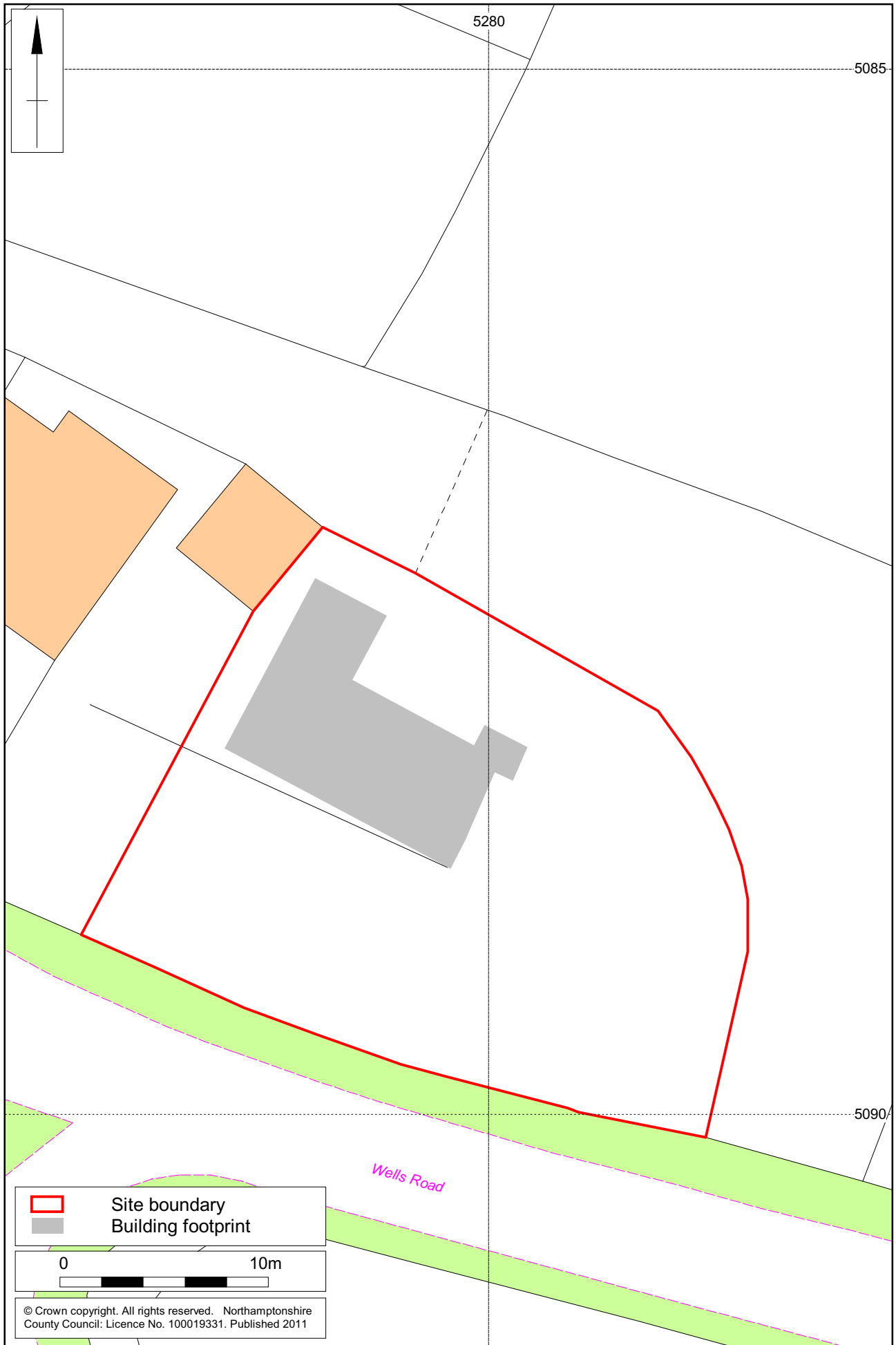
Scale 1:7,500 (A4) Site location in relation to Historic Environment Record (HER) data Fig 2



First Edition Ordnance Survey map Fig 3

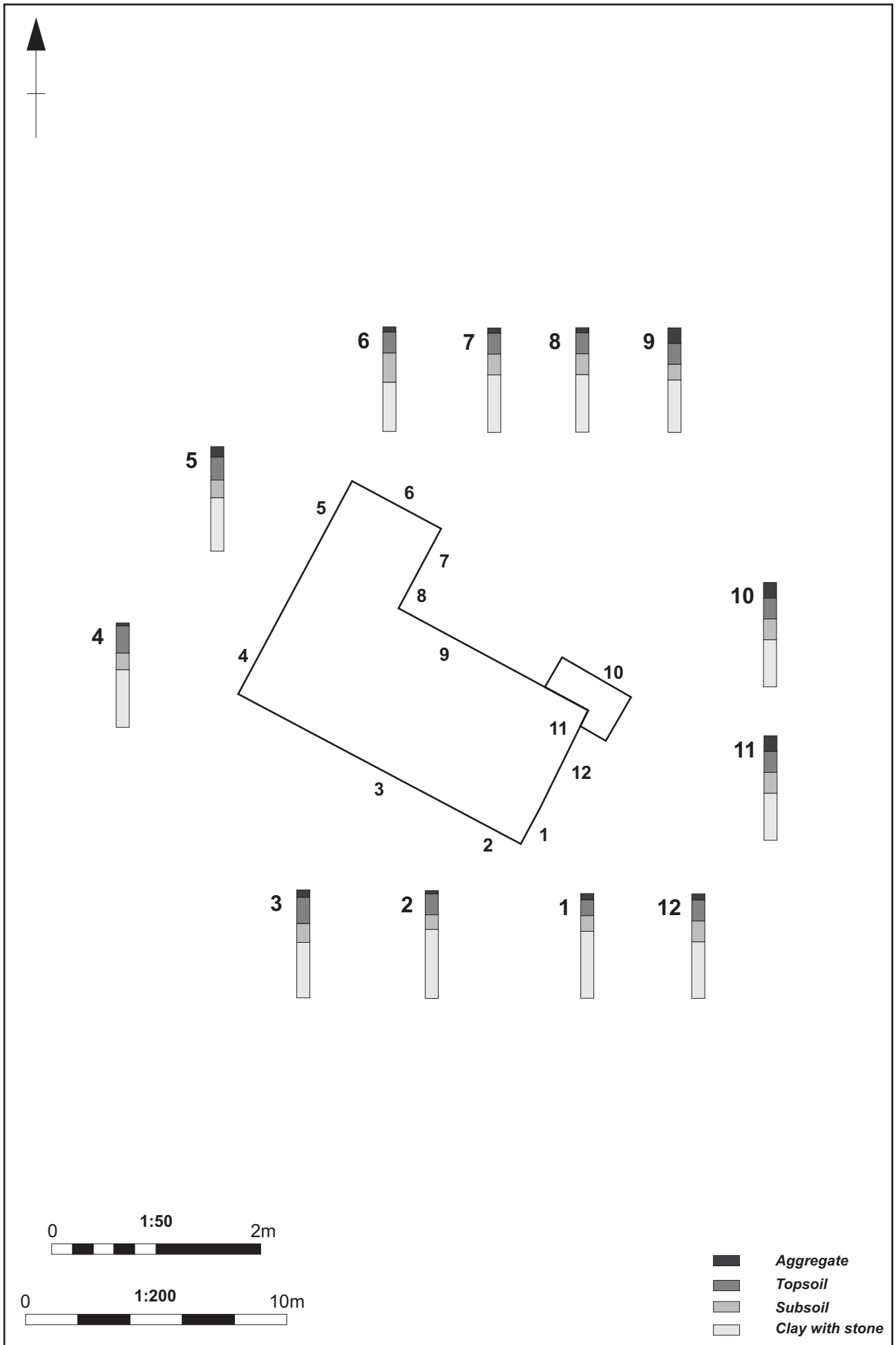


First Edition Ordnance Survey map Fig 4



Scale 1:250

General site plan showing the proposed building footprint Fig 5



Scales, Sections 1:50, Plan, 1:200

Building footprint with recorded stratigraphic depths

Fig 6



Northamptonshire County Council

Northamptonshire Archaeology



Northamptonshire Archaeology

2 Bolton House
Wootton Hall Park
Northampton NN4 8BE

t. 01604 700493 f. 01604 702822

e. sparry@northamptonshire.gov.uk

w. www.northantsarchaeology.co.uk



Northamptonshire
County Council